

1-Bedroom

TYPE A1

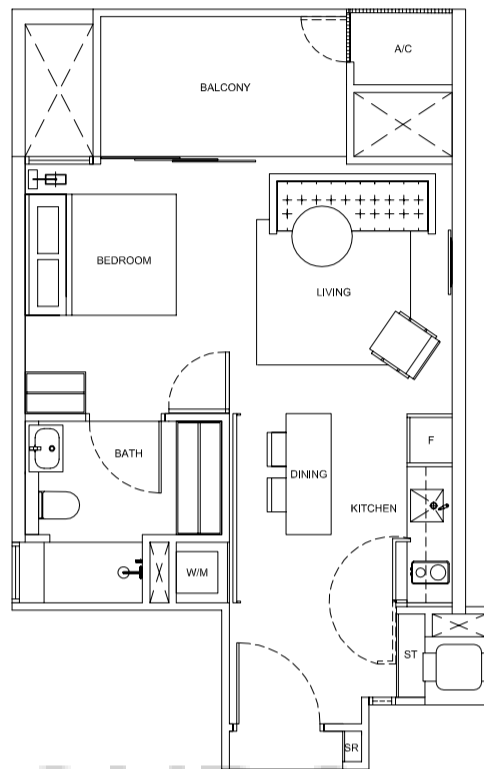
47 sq m (505 sq ft)

#05-03 to #17-03

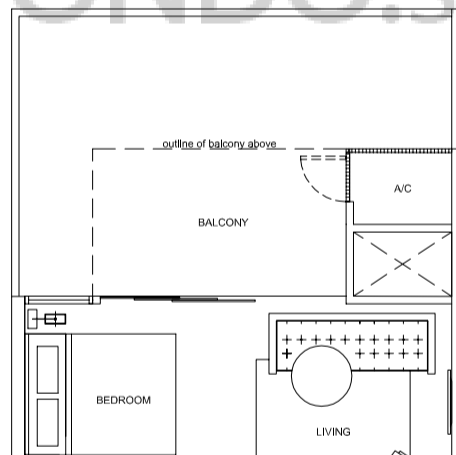
#05-04 to #17-04

#05-05 to #17-05

#05-06 to #17-06







TYPE A1a (PARTIAL PLAN)

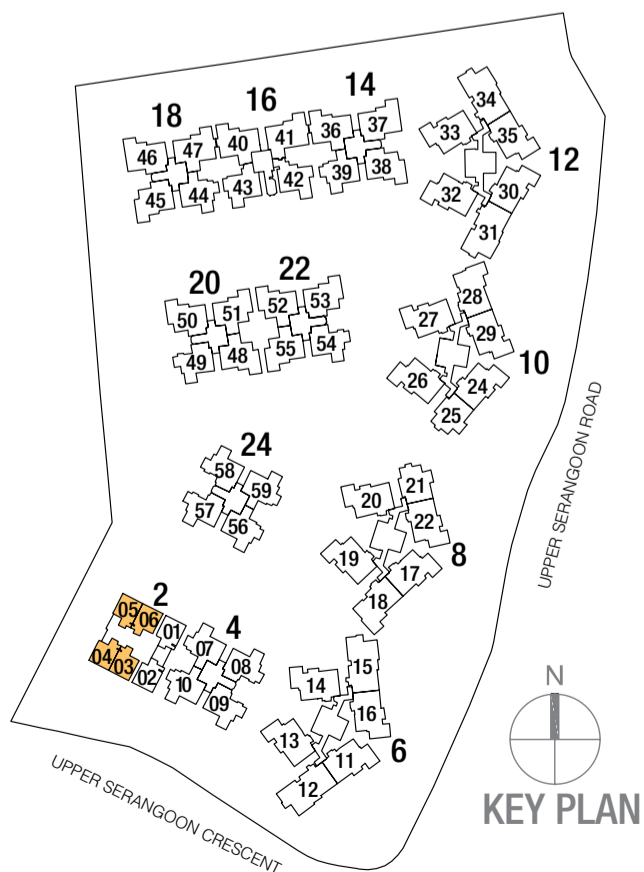
60 sq m (645 sq ft)

#04-03

#04-04

#04-05

#04-06



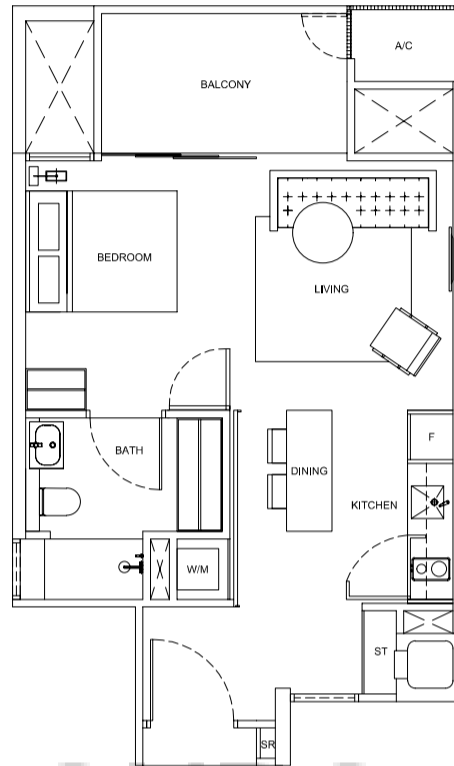
1-Bedroom

TYPE A2

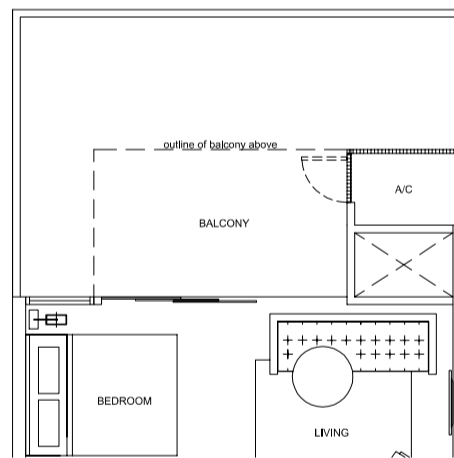
48 sq m (516 sq ft)

#05-01 to #17-01

#05-02 to #17-02



 BUYCONDO.sg

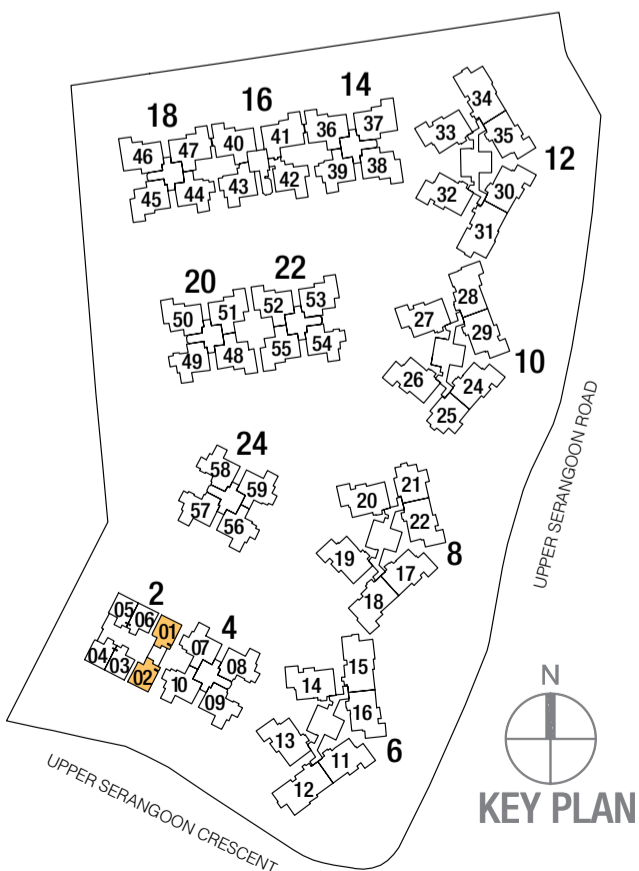


TYPE A2a (PARTIAL PLAN)

61 sq m (656 sq ft)

#04-01

#04-02



2-Bedroom

TYPE B1

82 sq m (882 sq ft)

#03-07 to #17-07

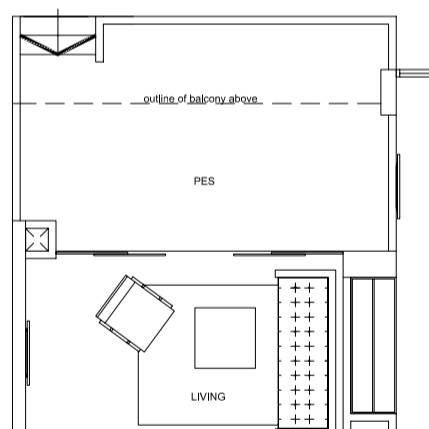
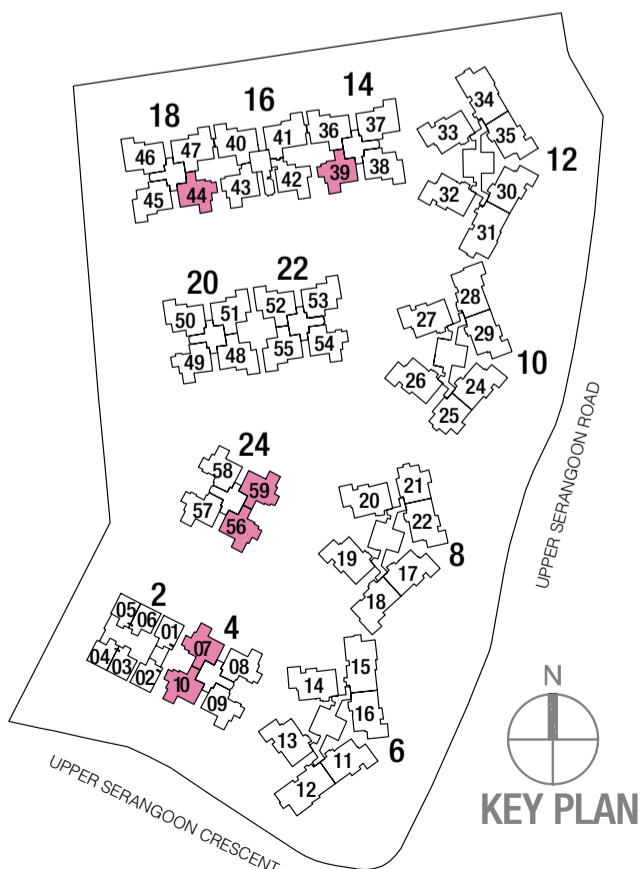
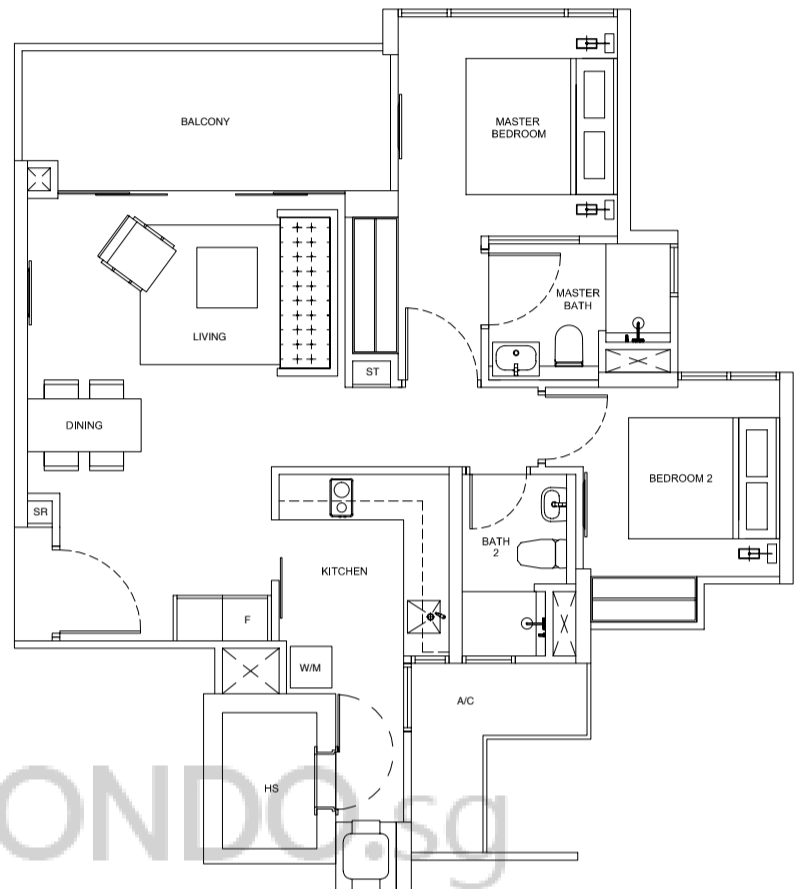
#03-10 to #17-10

#03-39 to #17-39

#03-44 to #17-44

#03-56 to #17-56

#03-59 to #17-59



TYPE B1a (PARTIAL PLAN)

88 sq m (947 sq ft)

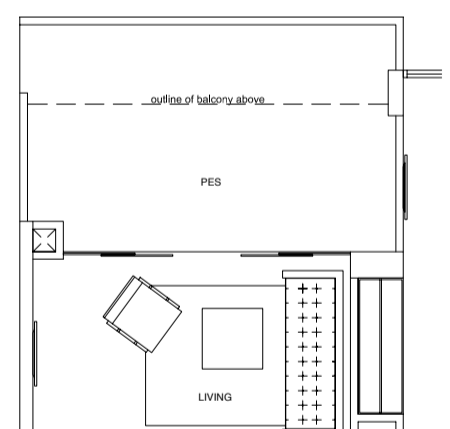
#02-07

#02-39

#02-44

#02-56

#02-59



TYPE B1a (PARTIAL PLAN)

88 sq m (947 sq ft)

#02-10

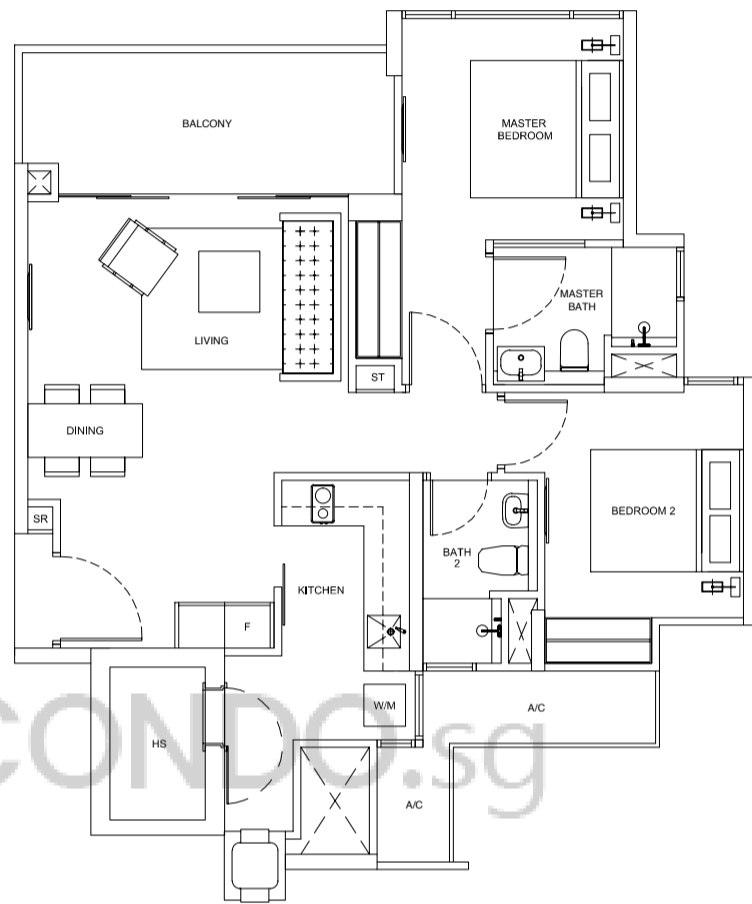


2-Bedroom

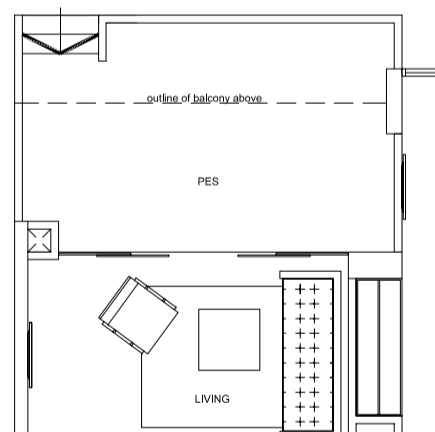
TYPE B2

83 sq m (893 sq ft)

#03-43 to #17-43



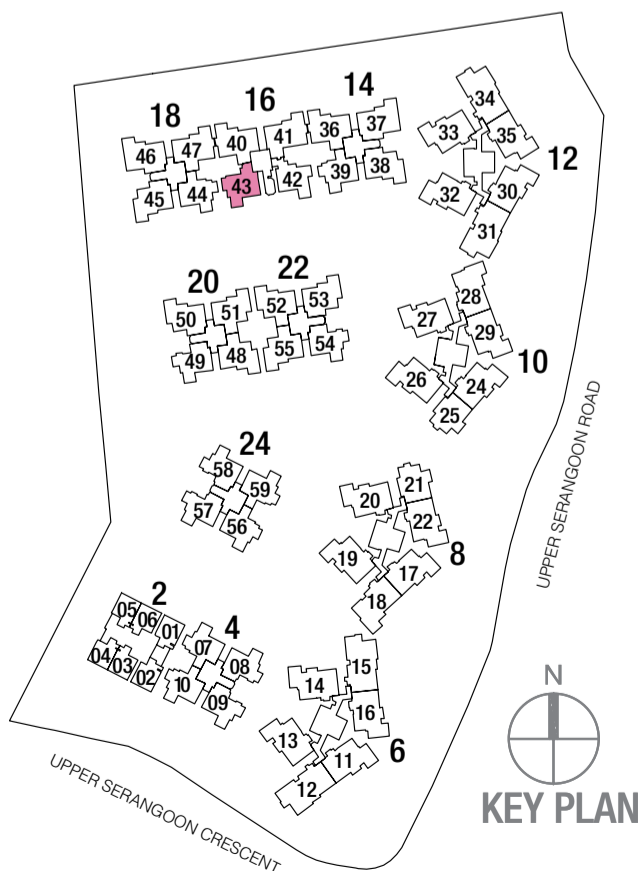
BUYCONDO.SG



TYPE B2a (PARTIAL PLAN)

89 sq m (957 sq ft)

#02-43



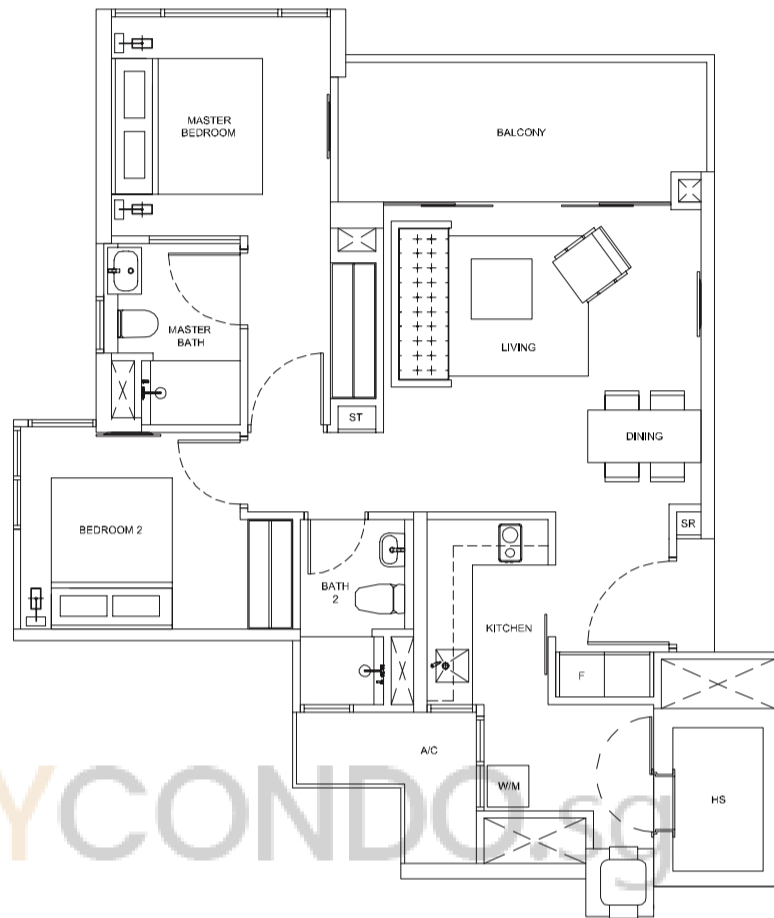
0 1 2 4 METERS

2-Bedroom

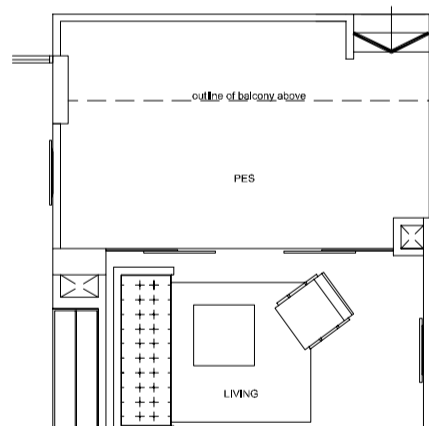
TYPE B3

81 sq m (871 sq ft)

#03-42 to #17-42



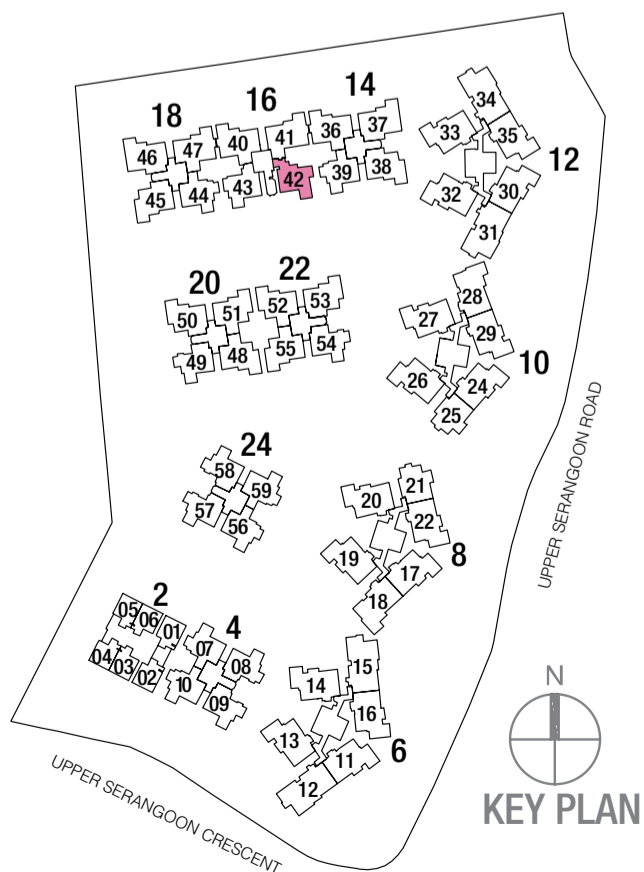
BUYCONDO.SG



TYPE B3a (PARTIAL PLAN)

87 sq m (936 sq ft)

#02-42



0 1 2 4 METERS

2-Bedroom

TYPE B4

79 sq m (850 sq ft)

#03-08 to #17-08

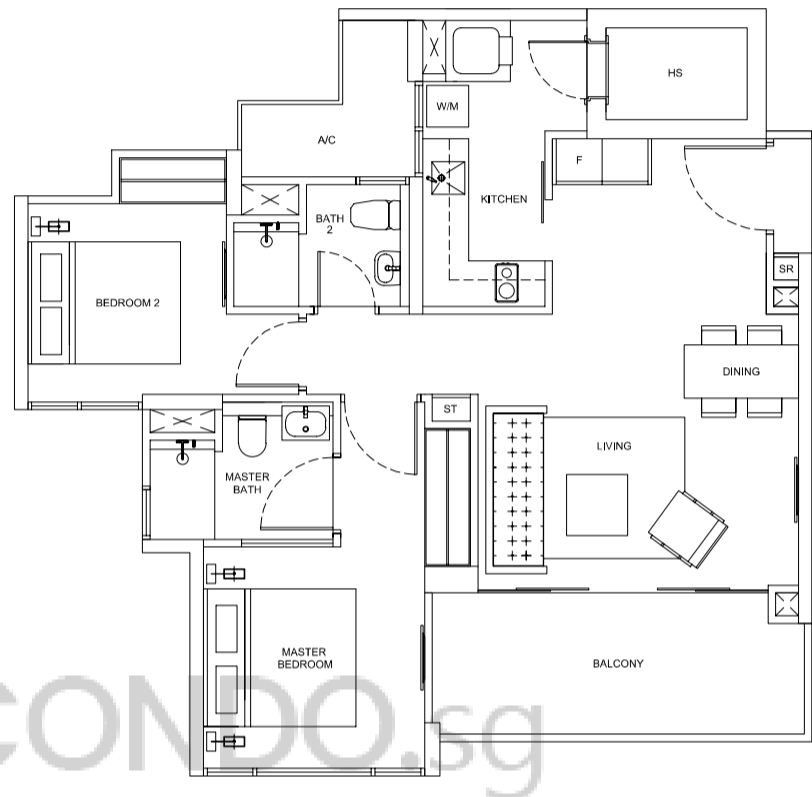
#03-09 to #17-09

#03-49 to #17-49

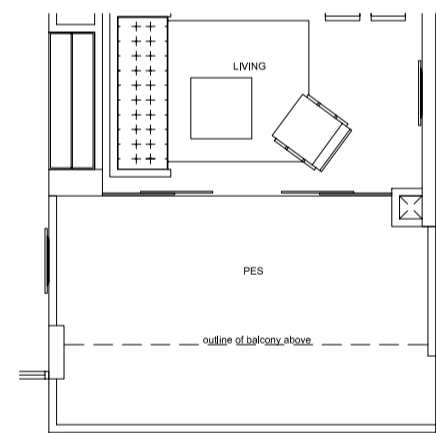
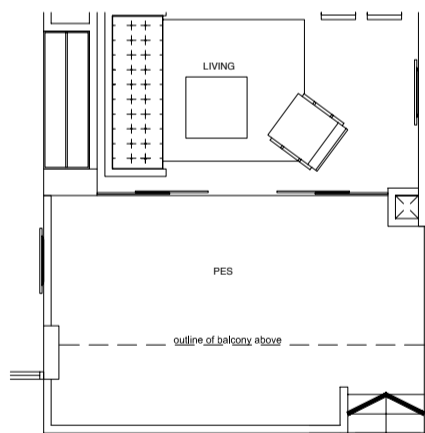
#03-54 to #17-54

#03-57 to #17-57

#03-58 to #17-58



BUYCONDO.SG



TYPE B4a (PARTIAL PLAN)

85 sq m (914 sq ft)

#02-08

#02-49

#02-54

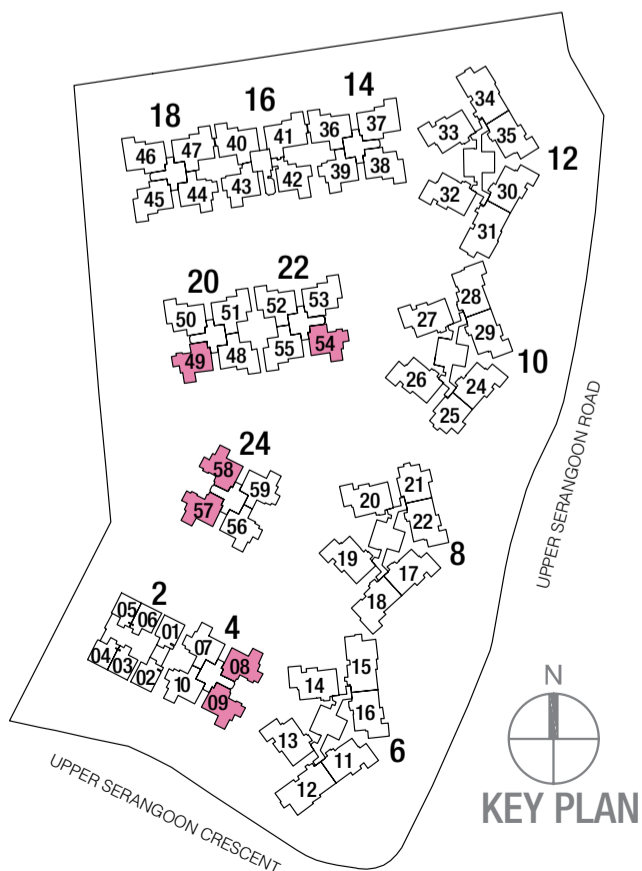
#02-57

#02-58

TYPE B4a (PARTIAL PLAN)

85 sq m (914 sq ft)

#02-09



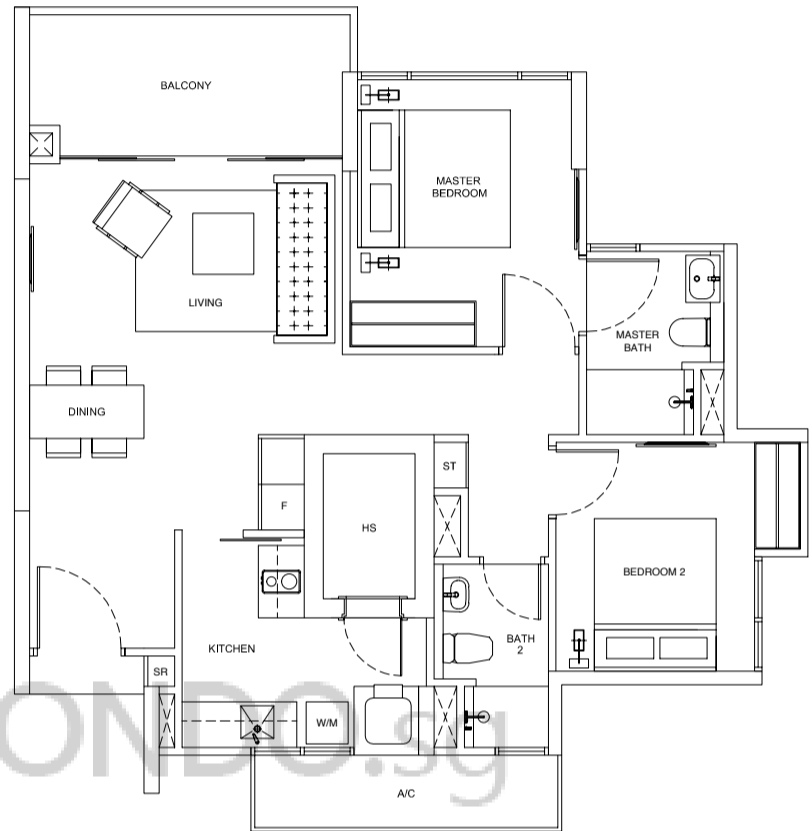
2-Bedroom

TYPE B5

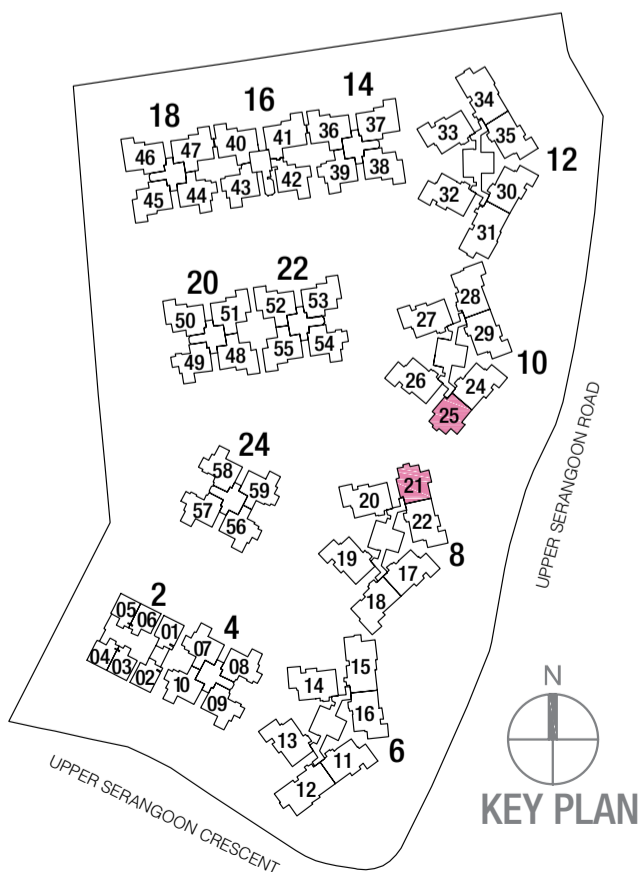
82 sq m (882 sq ft)

#05-21 to #17-21

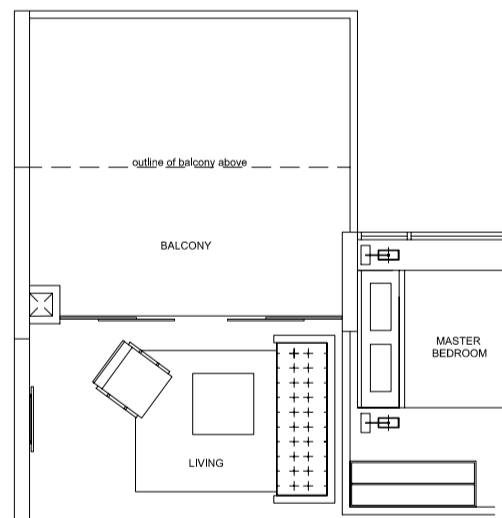
#05-25 to #17-25



BUYCONDO.SG



KEY PLAN



TYPE B5a (PARTIAL PLAN)

91 sq m (979 sq ft)

#04-21

#04-25

0 1 2 4 METERS

2-Bedroom with Study

TYPE B1s

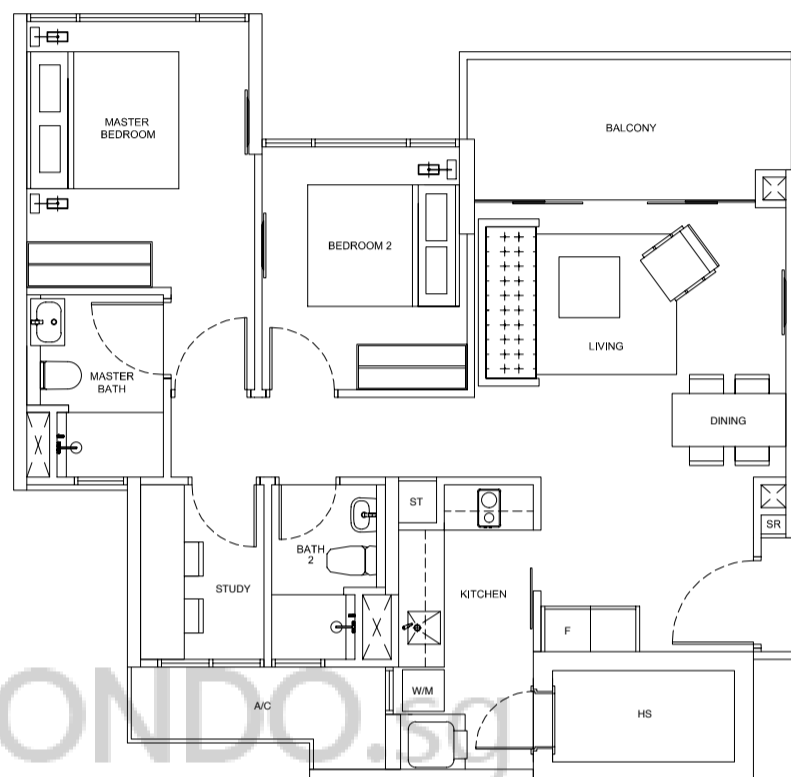
85 sq m (914 sq ft)

#03-38 to #17-38

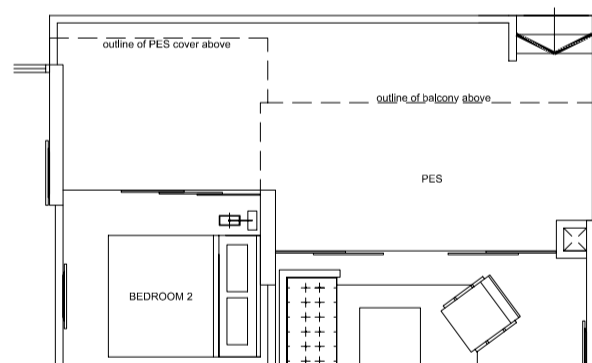
#03-45 to #17-45

#03-50 to #17-50

#03-53 to #17-53



BUYCONDO.SG



TYPE B1sa (PARTIAL PLAN)

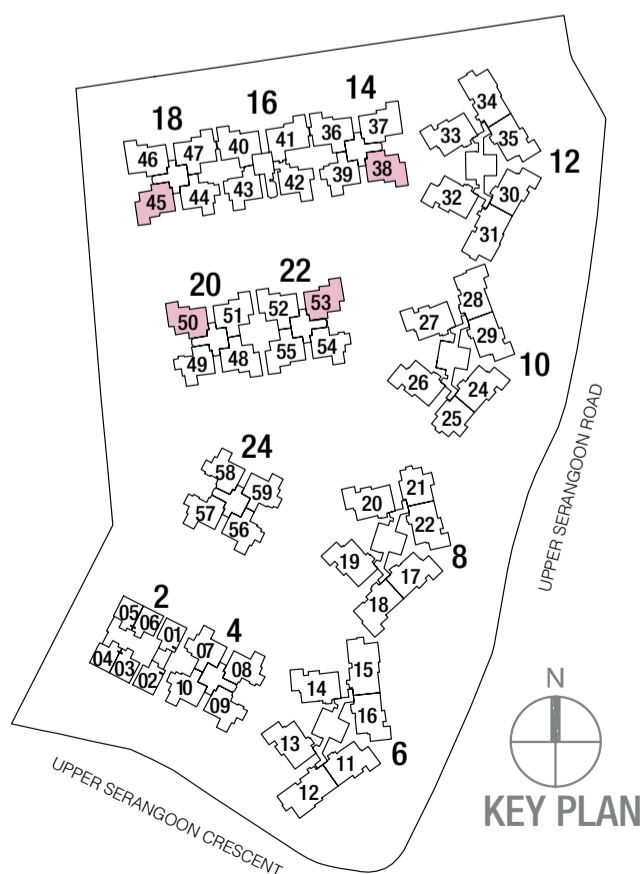
97 sq m (1,044 sq ft)

#02-38

#02-45

#02-50

#02-53



KEY PLAN



2-Bedroom with Study

TYPE B2s

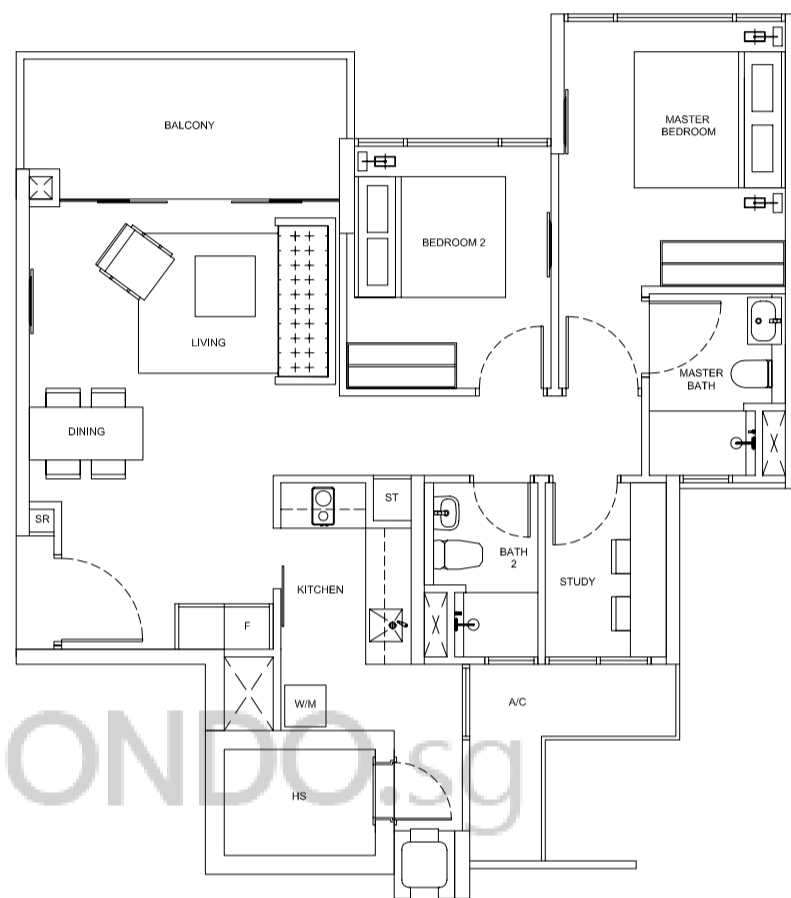
88 sq m (947 sq ft)

#03-48 to #17-48

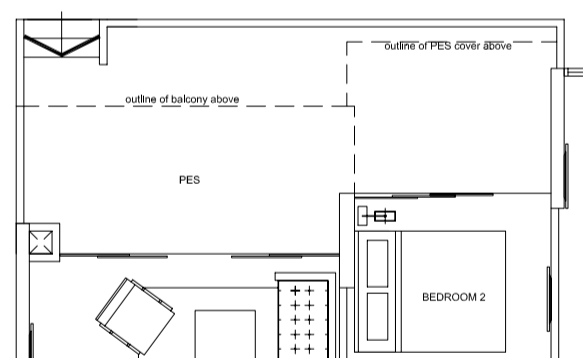
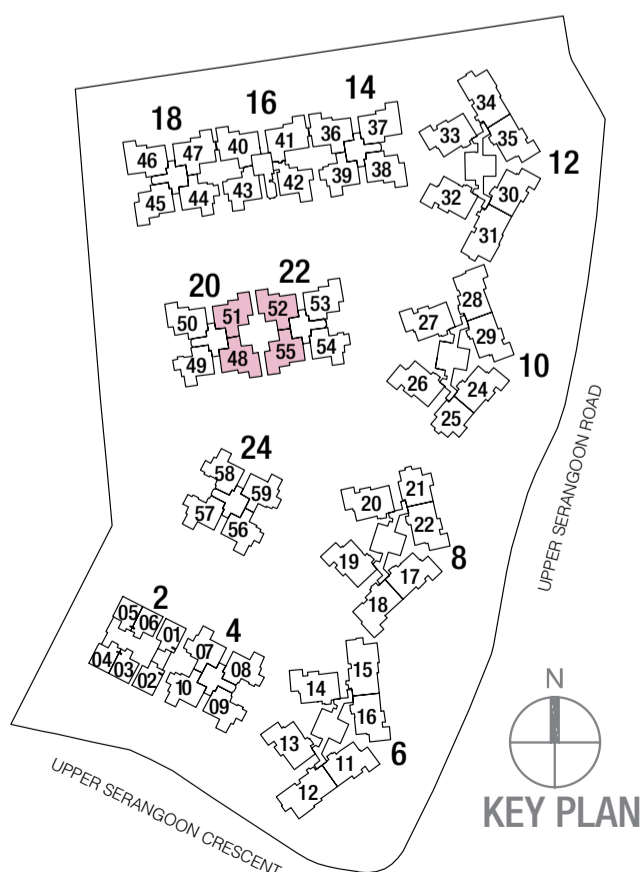
#03-51 to #17-51

#03-52 to #17-52

#03-55 to #17-55



BUYCONDO.SG



TYPE B2sa (PARTIAL PLAN)

99 sq m (1,065 sq ft)

#02-48

#02-51

#02-52

#02-55



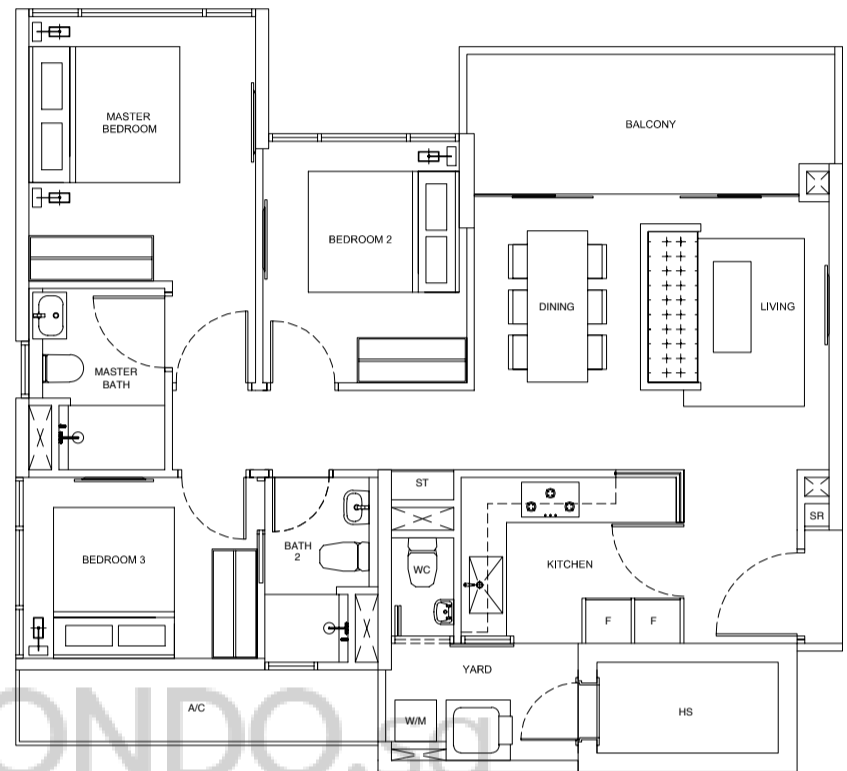
3-Bedroom

TYPE C1

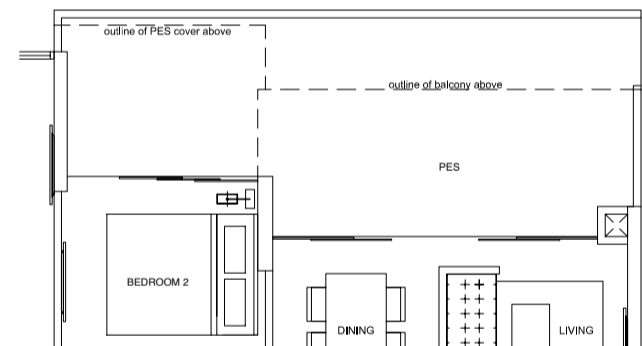
96 sq m (1,033 sq ft)

#03-37 to #17-37

#03-46 to #17-46



BUYCONDO.SG

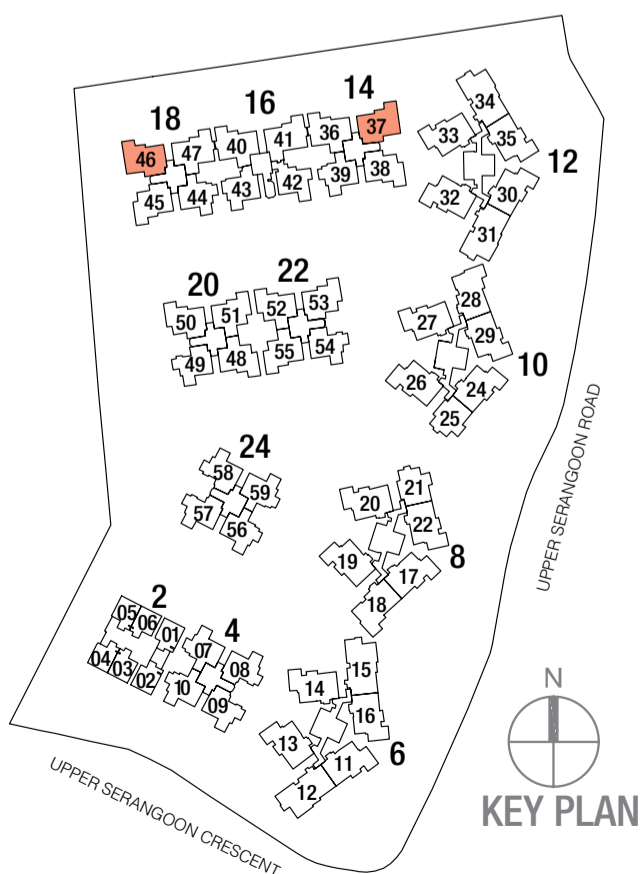


TYPE C1a (PARTIAL PLAN)

107 sq m (1,151 sq ft)

#02-37

#02-46



3-Bedroom

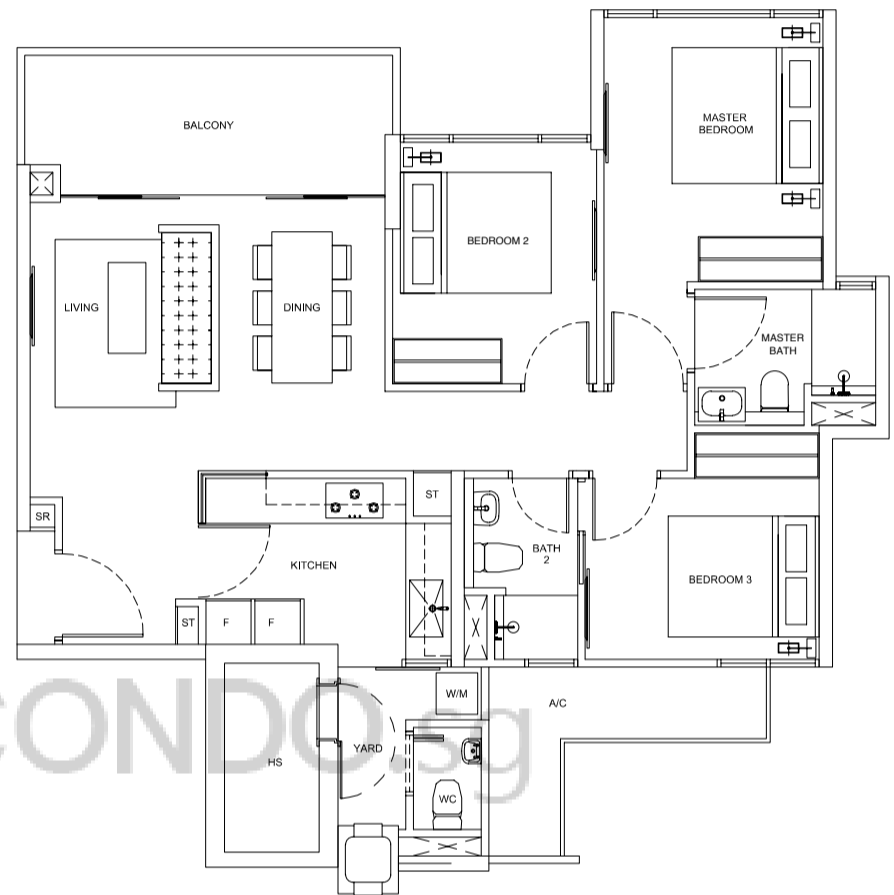
TYPE C2

99 sq m (1,065 sq ft)

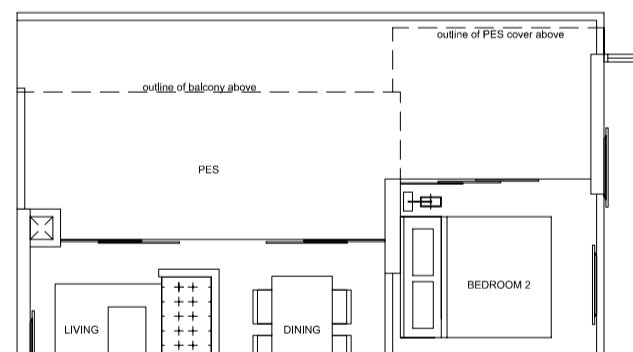
#03-36 to #17-36

#03-40 to #17-40

#03-47 to #17-47



BUYCONDO.SG



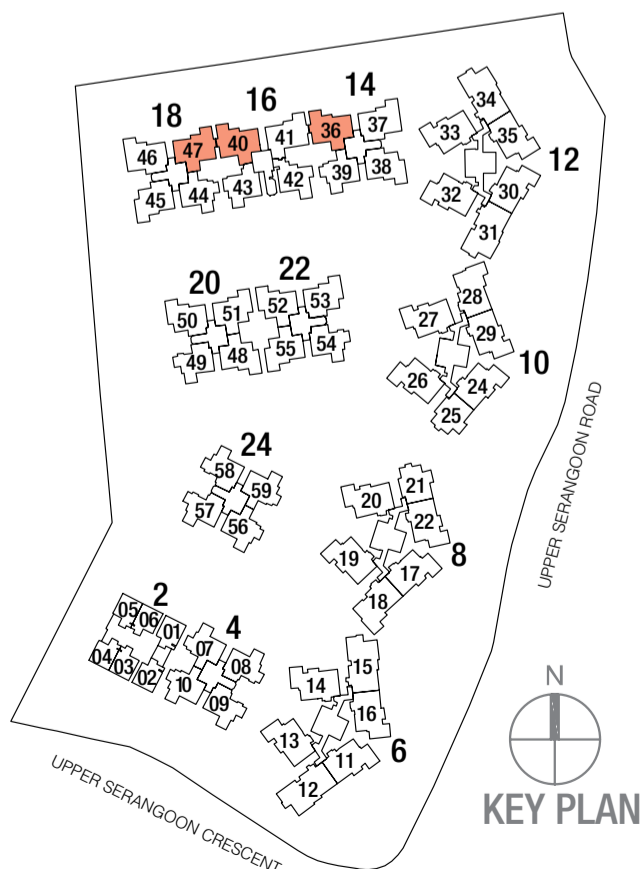
TYPE C2a (PARTIAL PLAN)

110 sq m (1,184 sq ft)

#02-36

#02-40

#02-47

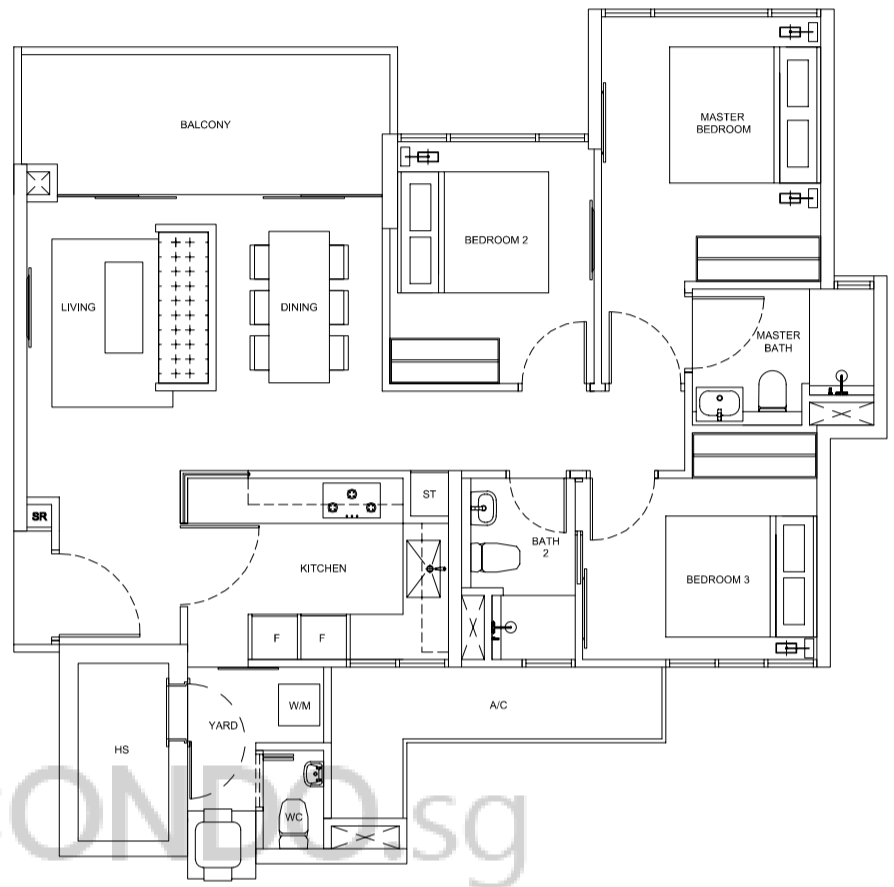


3-Bedroom

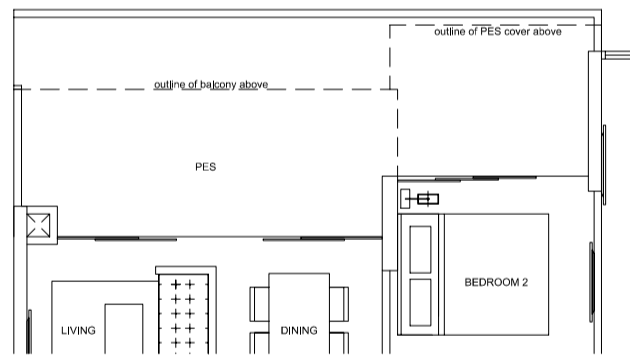
TYPE C3

99 sq m (1,065 sq ft)

#03-41 to #17-41



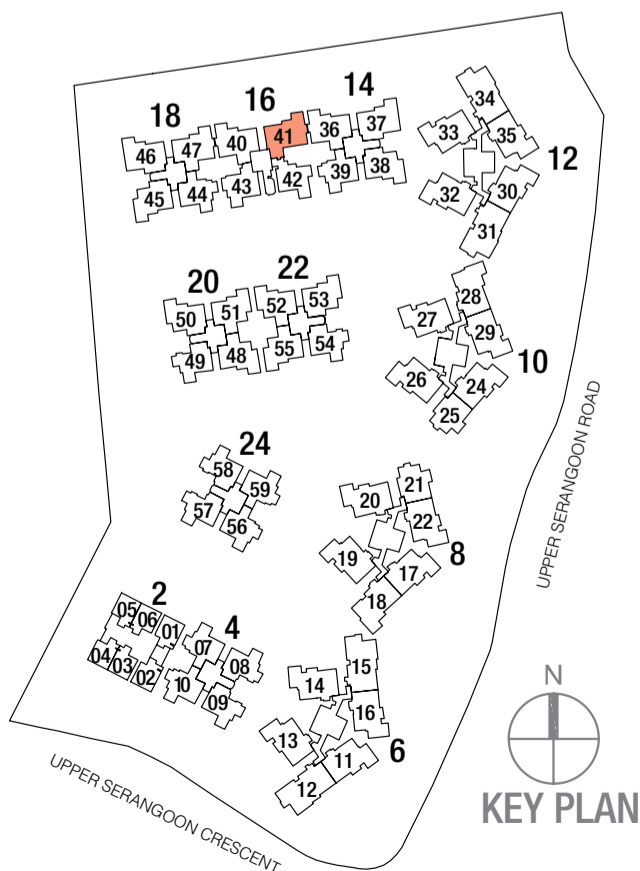
BUYCONDO.SG



TYPE C3a (PARTIAL PLAN)

110 sq m (1,184 sq ft)

#02-41



KEY PLAN

0 1 2 4 METERS

3-Bedroom

TYPE C4

103 sq m (1,108 sq ft)

#03-11 to #17-11

#03-16 to #17-16

#03-17 to #17-17

#03-29 to #17-29

#03-30 to #17-30

#03-35 to #18-35

#05-13 to #17-13

#05-22 to #17-22

#05-24 to #17-24

#05-33 to #18-33

#06-14 to #17-14

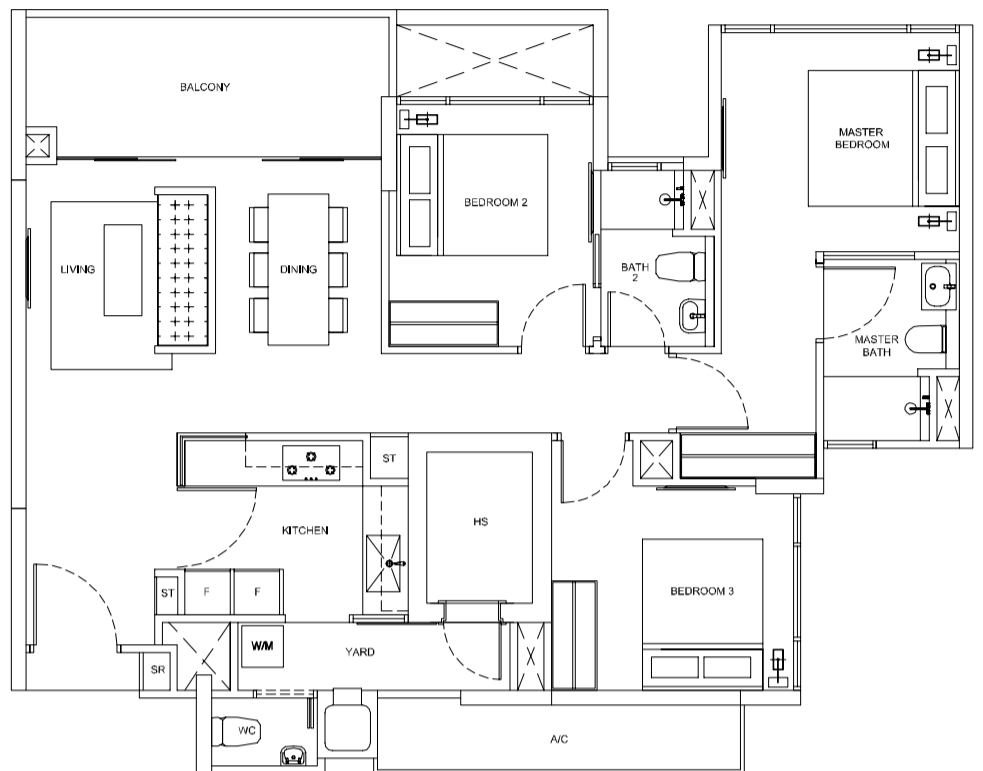
#06-19 to #17-19

#06-20 to #17-20

#06-26 to #17-26

#06-27 to #17-27

#06-32 to #17-32



TYPE C4a

128 sq m (1,377 sq ft)
(PARTIAL PLAN)

#02-11

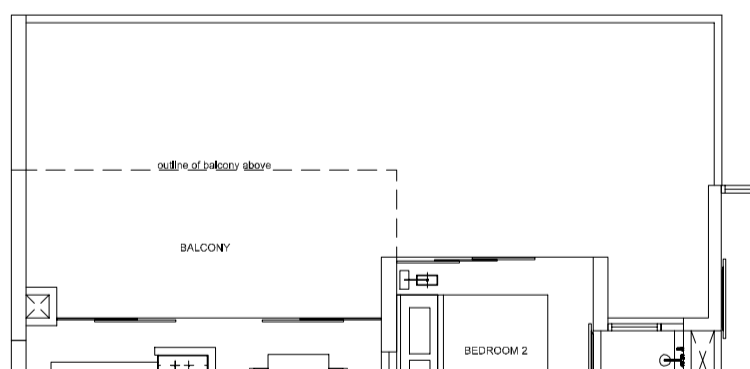
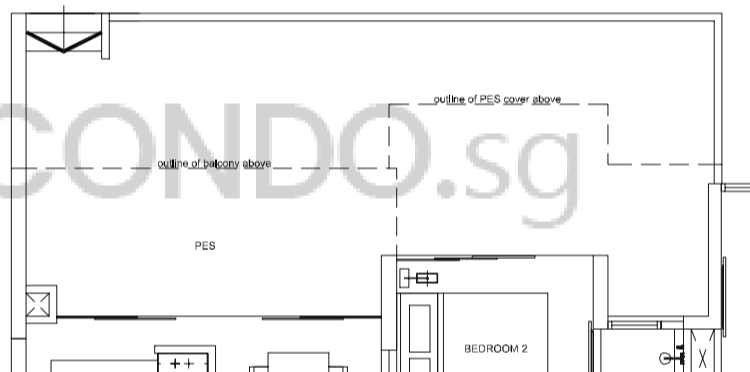
#02-16

#02-17

#02-29

#02-30

#02-35



TYPE C4a

128 sq m (1,377 sq ft)
(PARTIAL PLAN)

#04-13

#04-22

#04-24

#04-33

#05-14

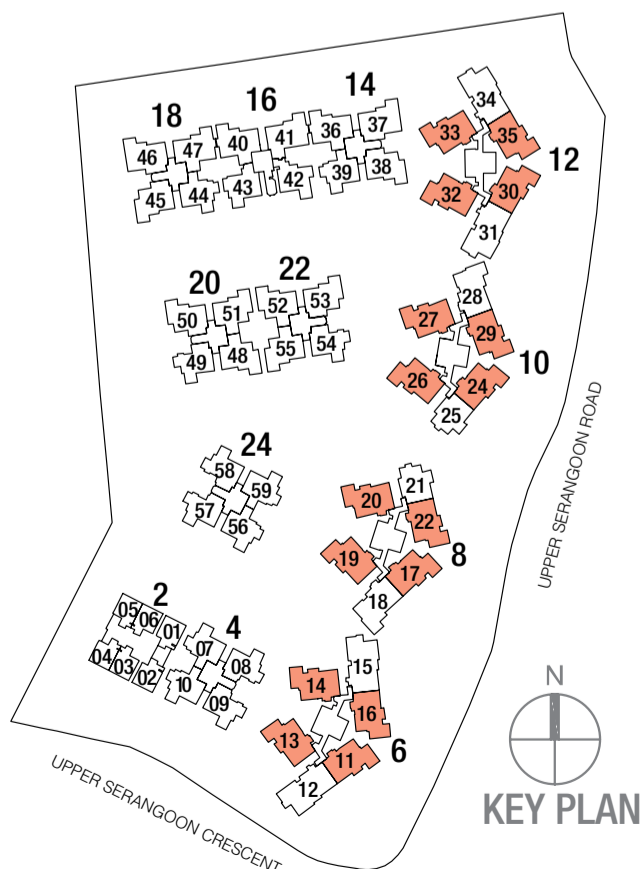
#05-19

#05-20

#05-26

#05-27

#05-32



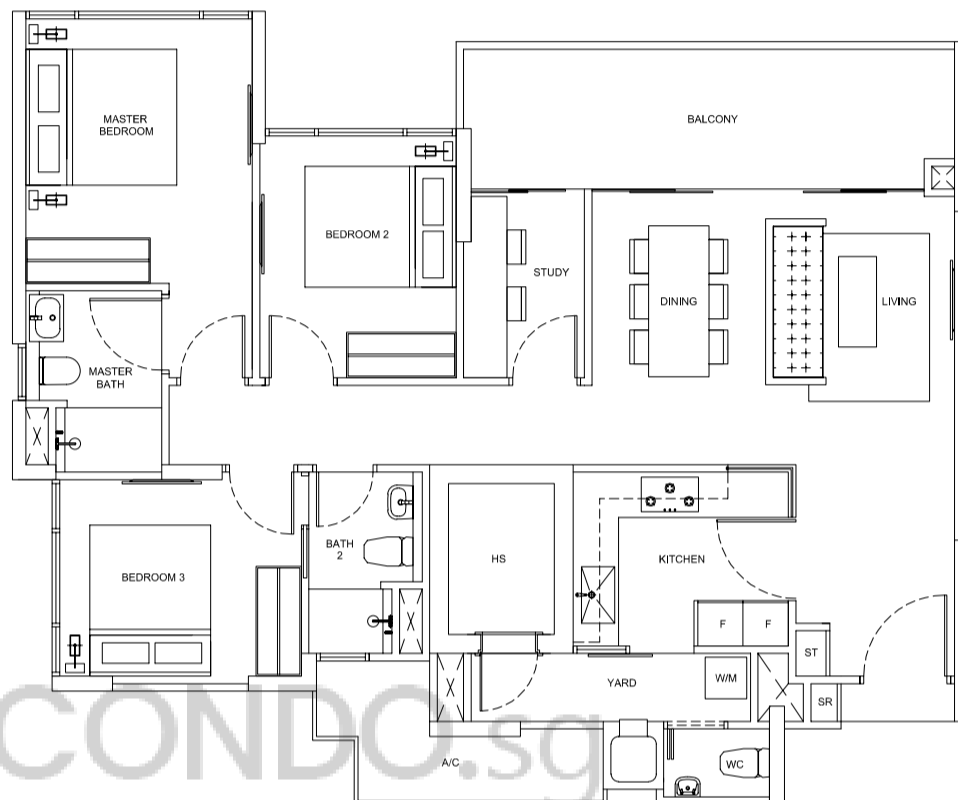
3-Bedroom with Study

TYPE C1s

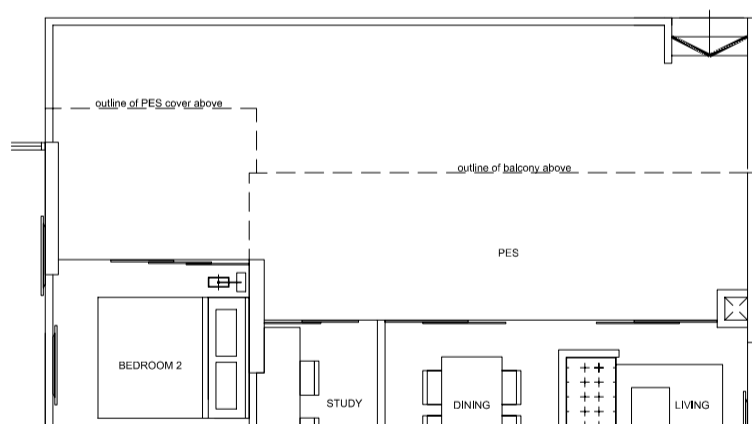
110 sq m (1,184 sq ft)

#03-18 to #17-18

#03-28 to #17-28



BUYCONDO.sg

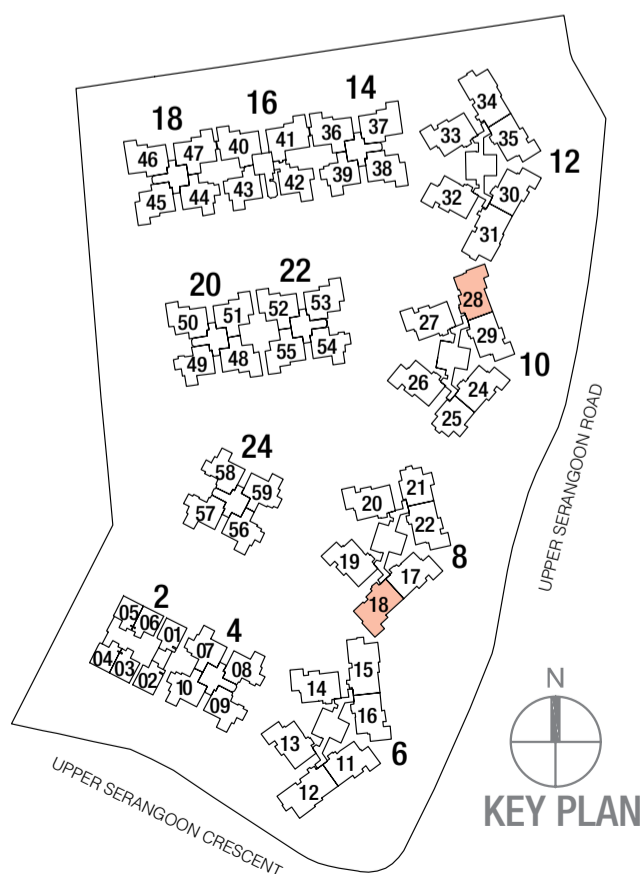


TYPE C1sa (PARTIAL PLAN)

132 sq m (1,420 sq ft)

#02-18

#02-28



0 1 2 4 METERS

4-Bedroom

TYPE D1

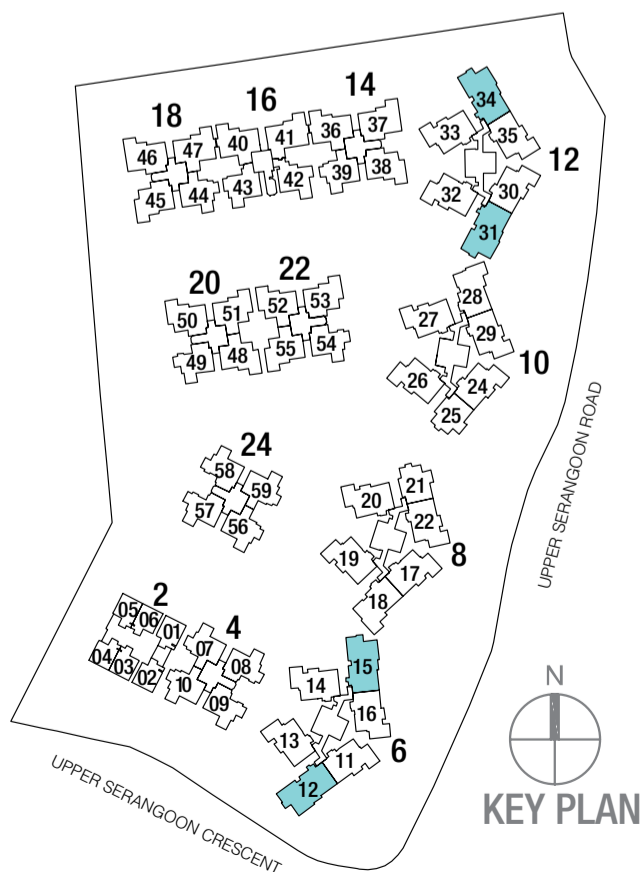
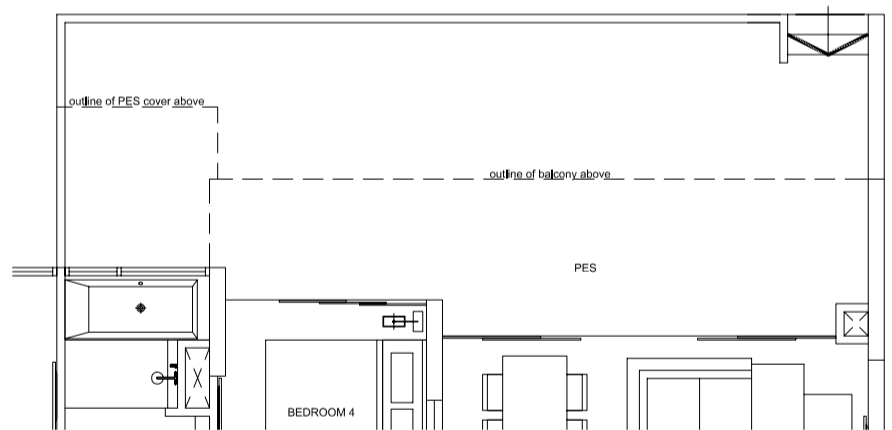
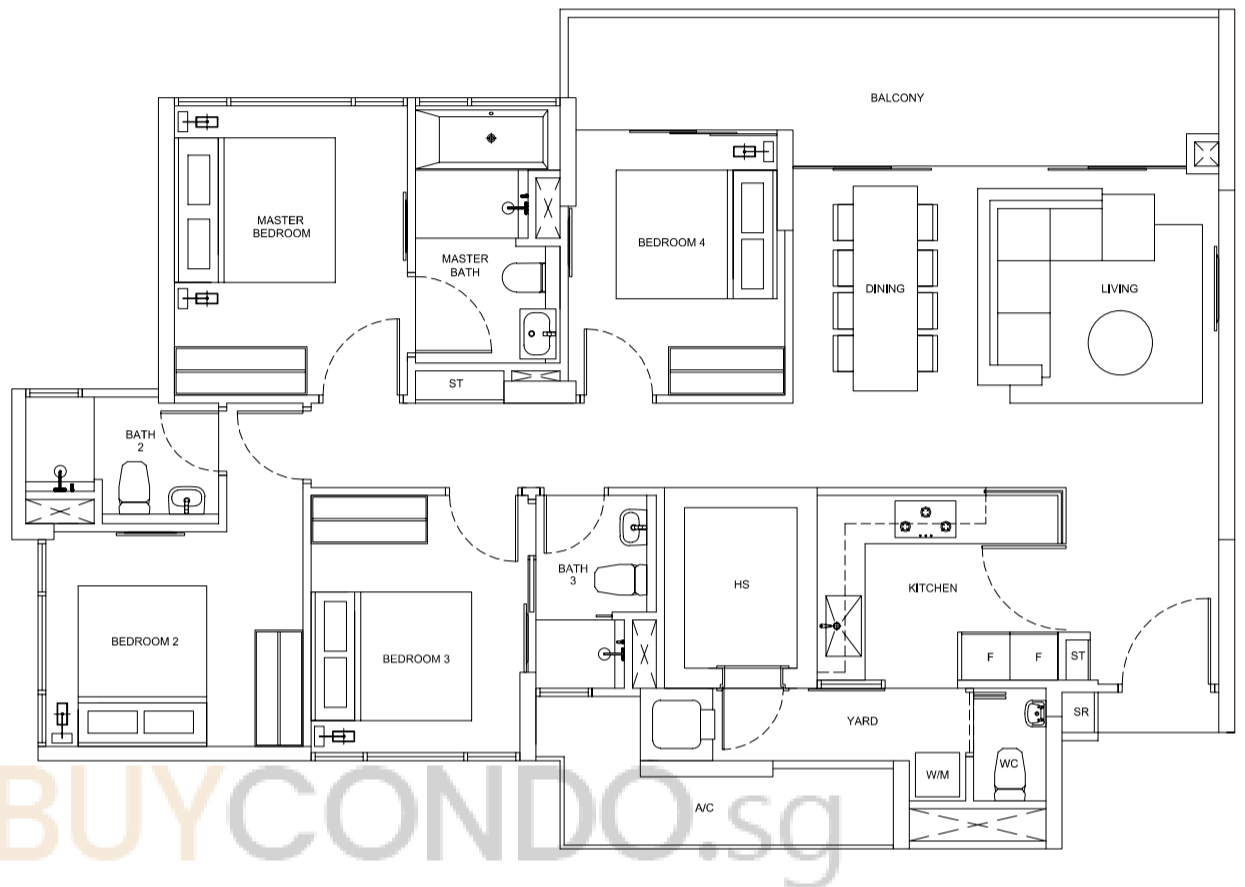
127 sq m (1,367 sq ft)

#03-12 to #17-12

#03-15 to #17-15

#03-31 to #17-31

#03-34 to #18-34



TYPE D1a (PARTIAL PLAN)

150 sq m (1,614 sq ft)

#02-12

#02-15

#02-31

#02-34

0 1 2 4 METERS

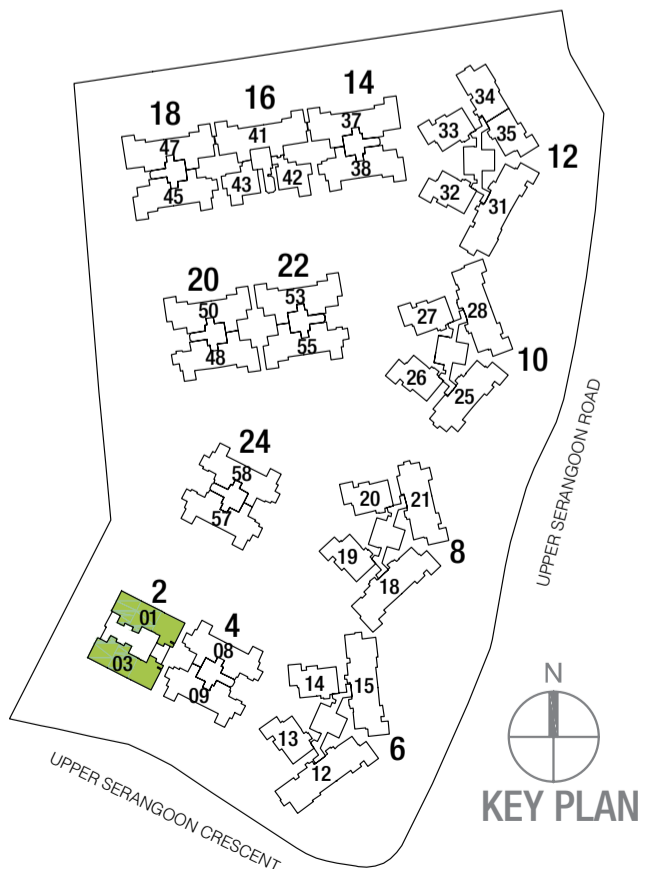
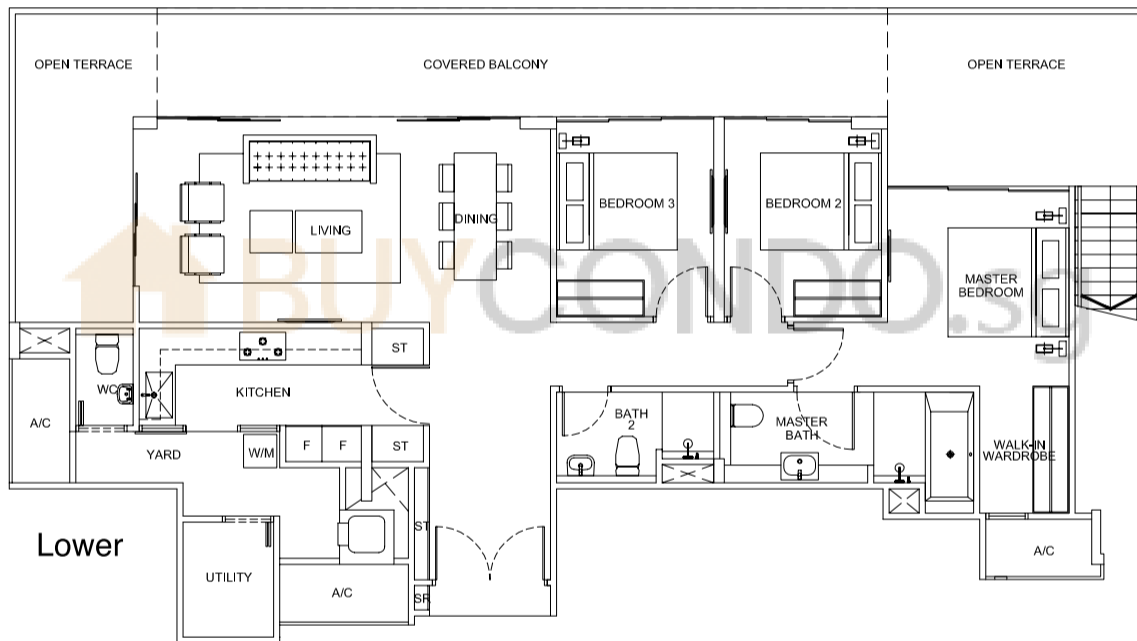
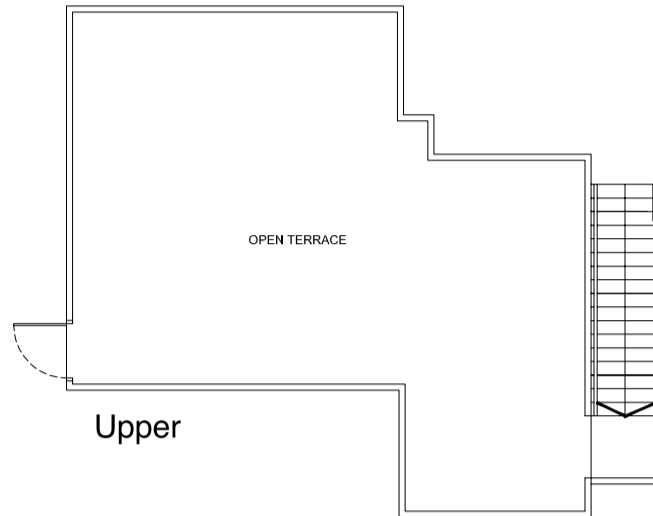
Penthouse

TYPE PH1

215 sq m (2,314 sq ft)

#18-01

#18-03



Penthouse

TYPE PH2

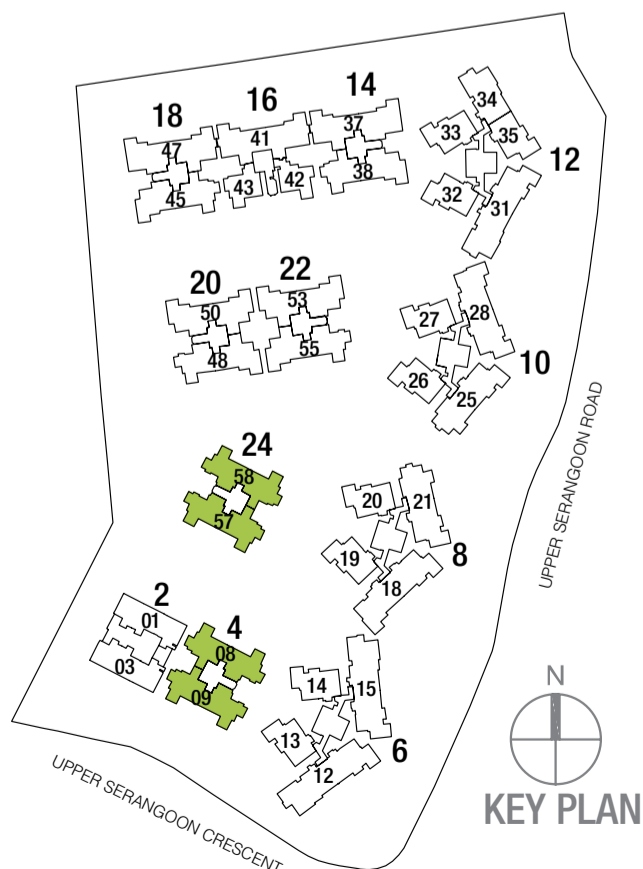
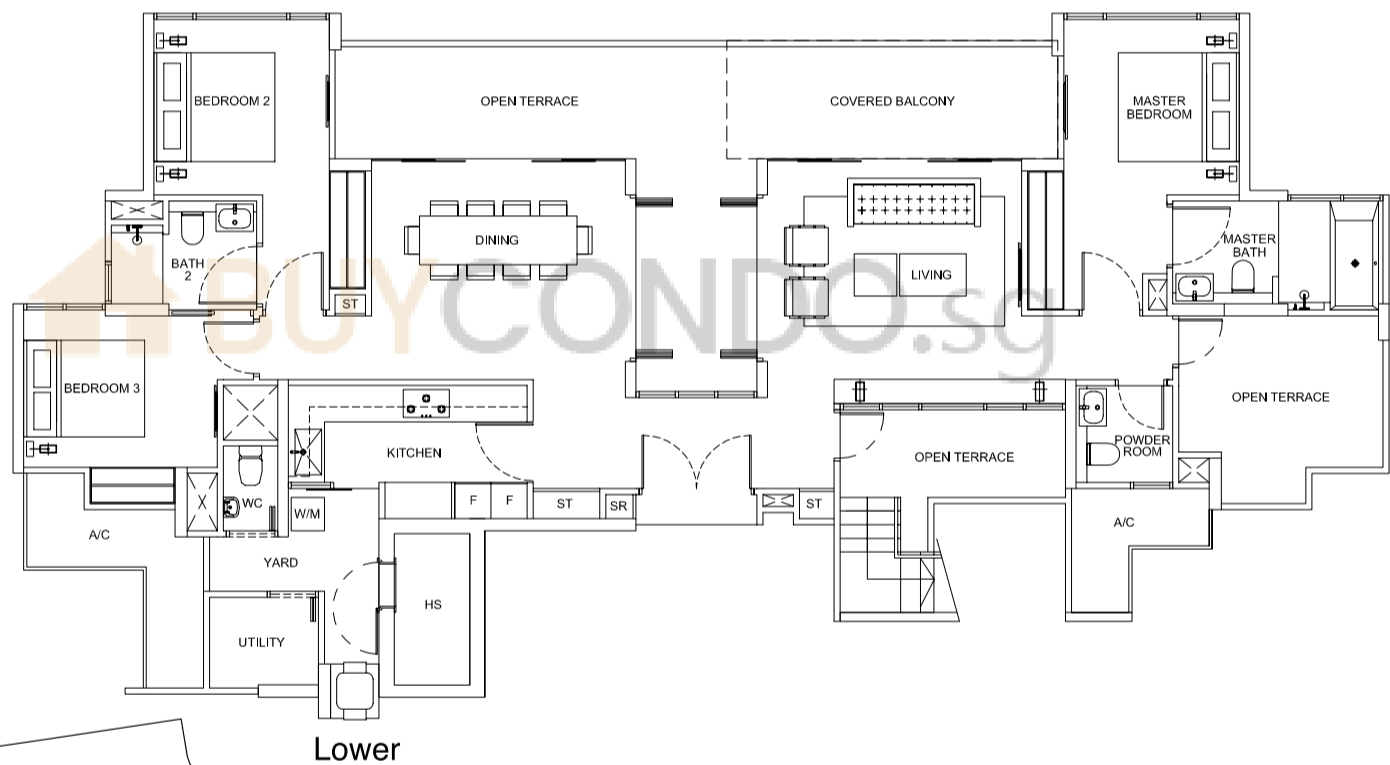
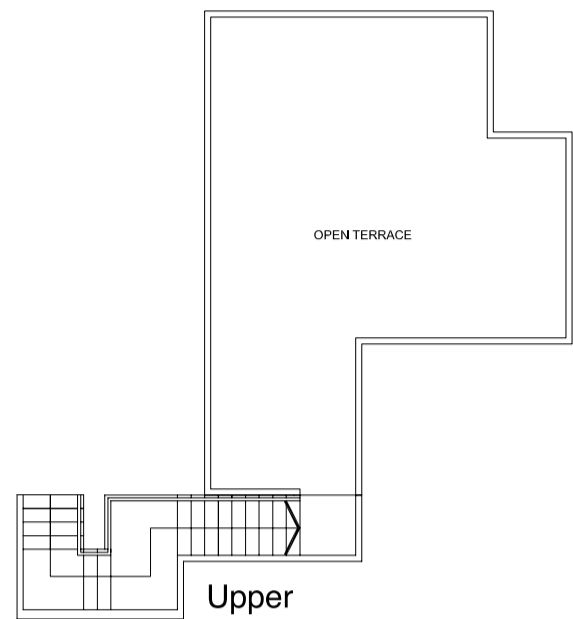
223 sq m (2,400 sq ft)

#18-08

#18-09

#18-57

#18-58



Penthouse

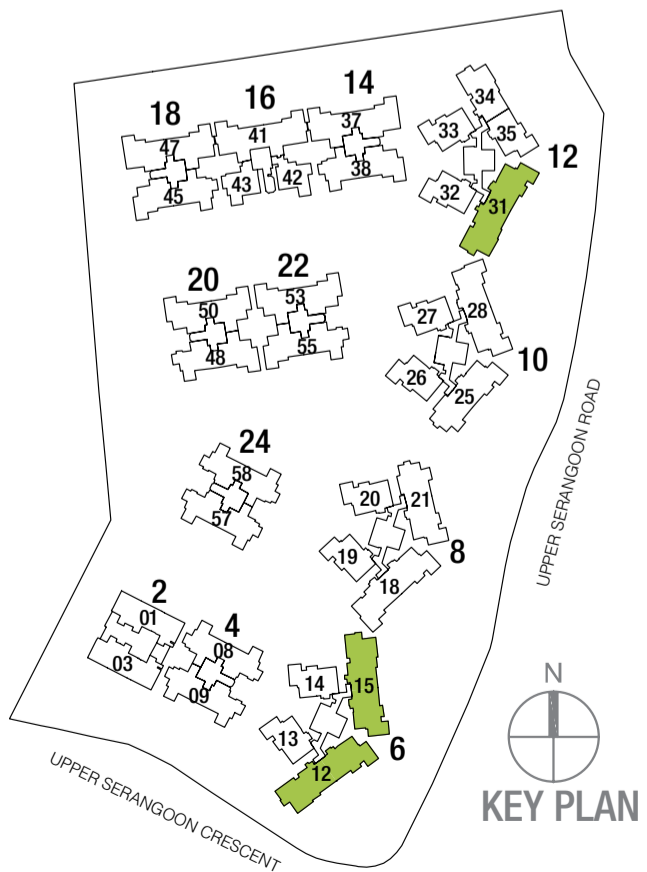
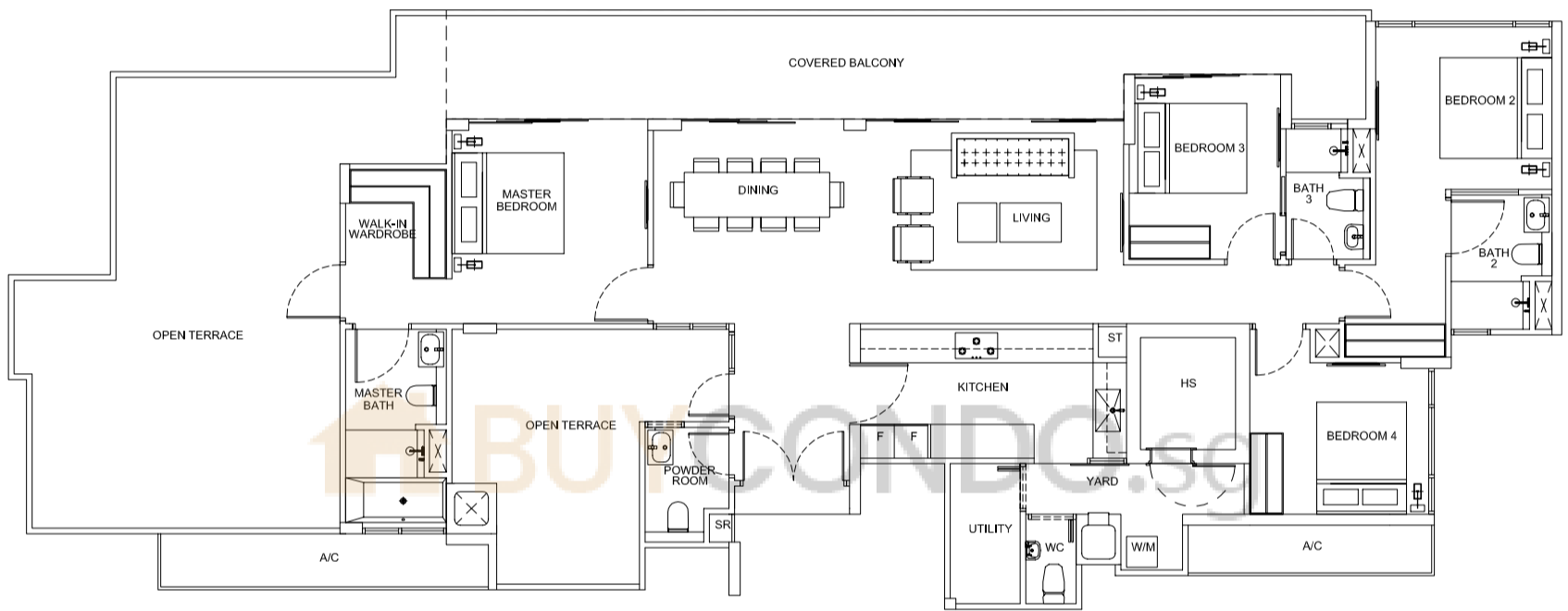
TYPE PH3

245 sq m (2,637 sq ft)

#18-12

#18-15

#18-31



0 2.5 5 METERS

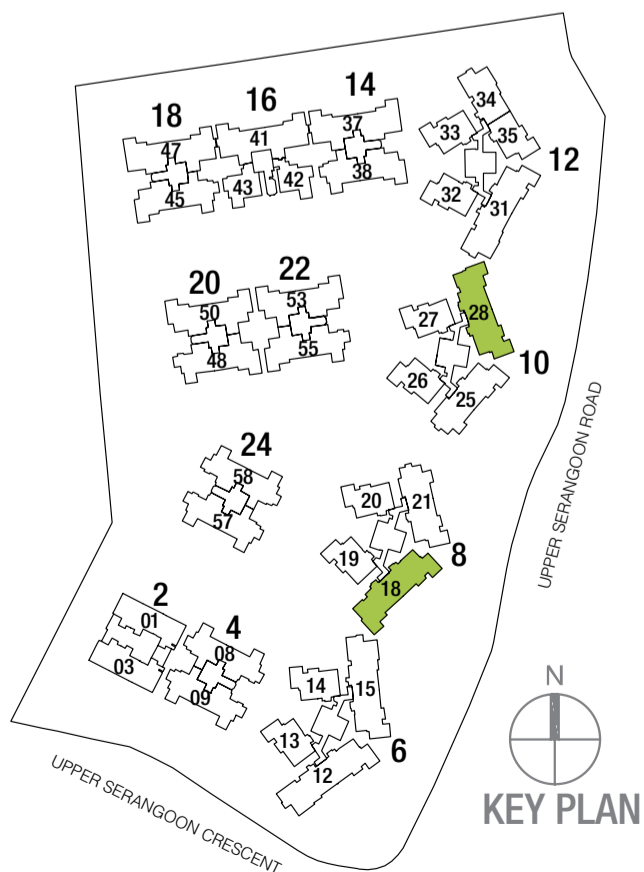
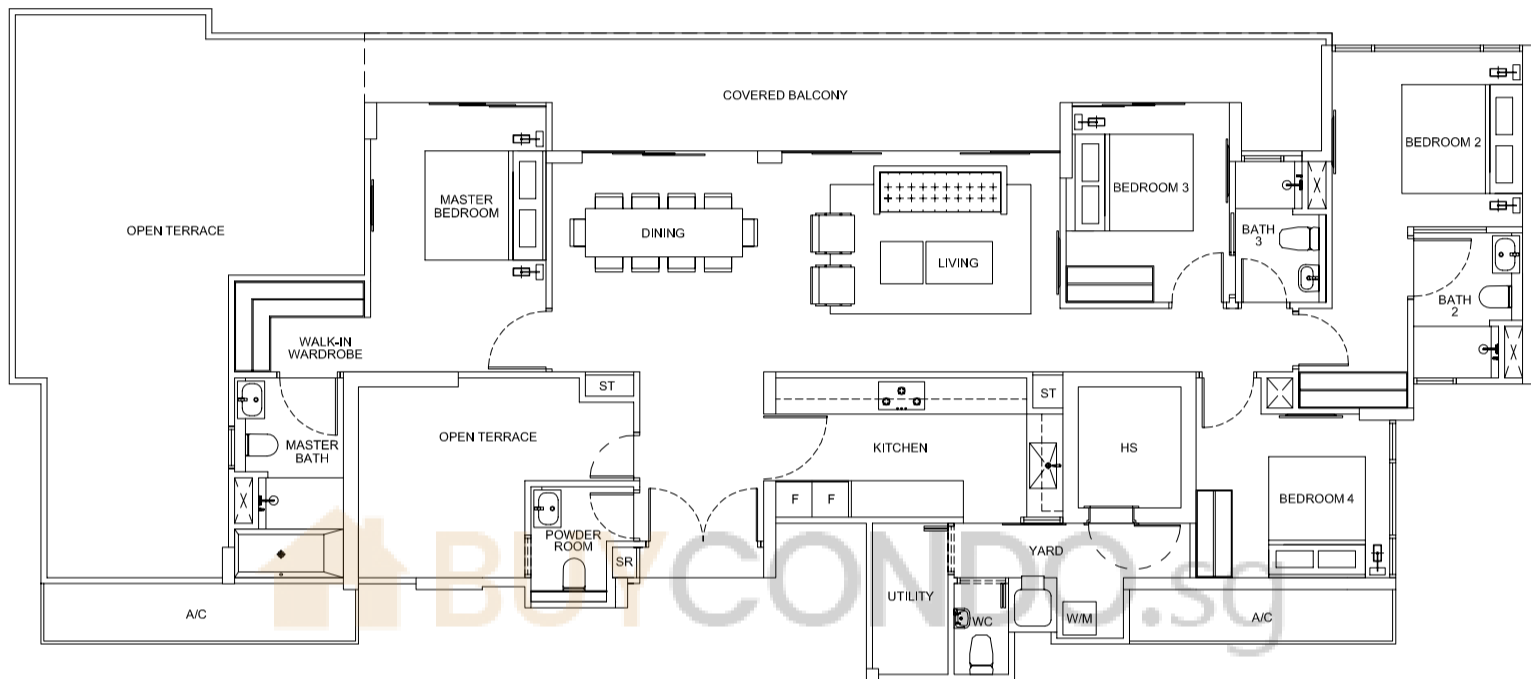
Penthouse

TYPE PH4

230 sq m (2,475 sq ft)

#18-18

#18-28



0 2.5 5 METERS

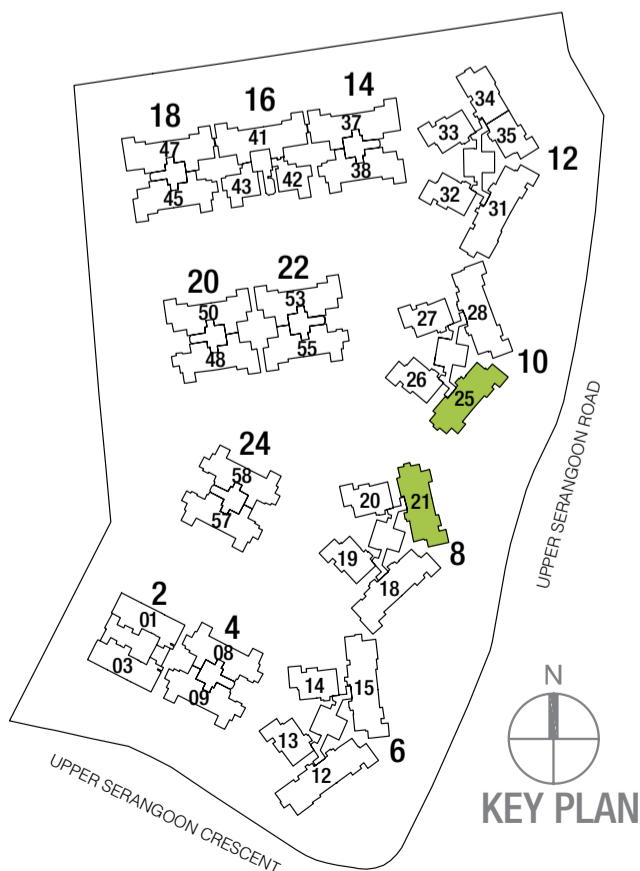
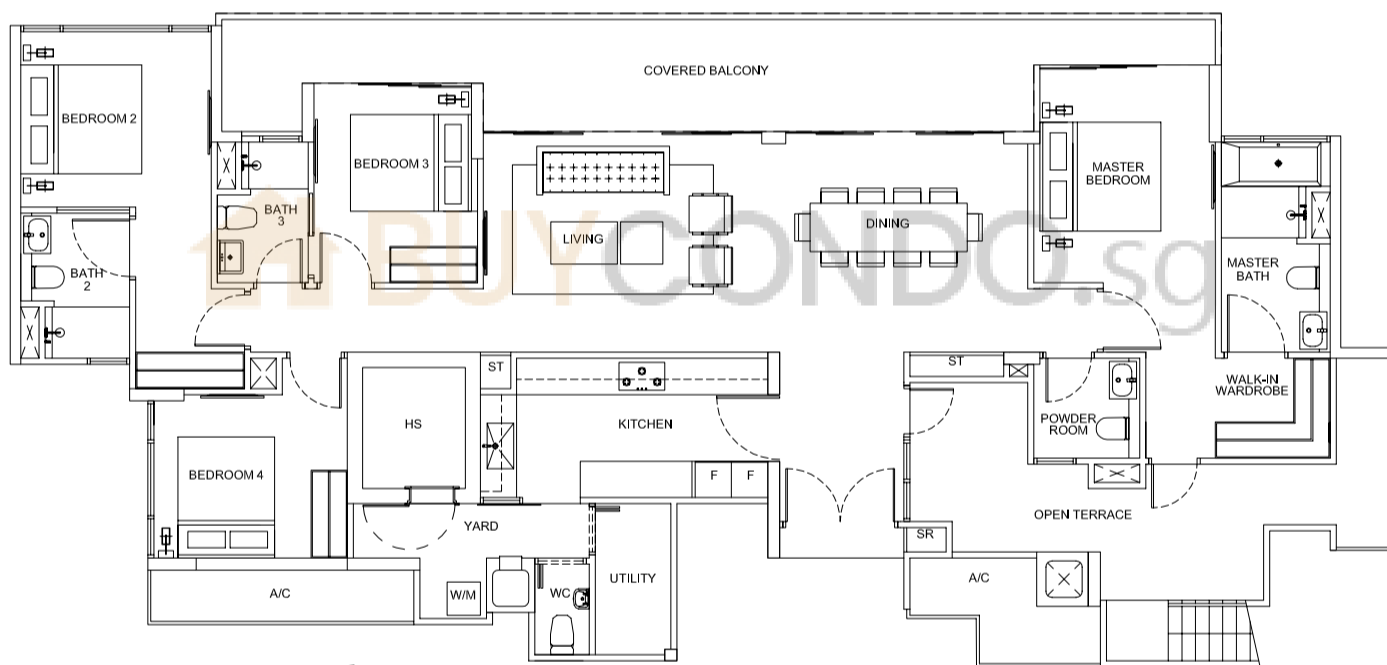
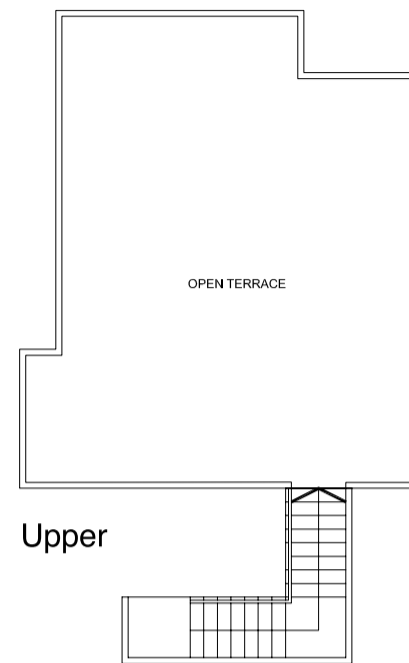
Penthouse

TYPE PH5

249 sq m (2,680 sq ft)

#18-21

#18-25



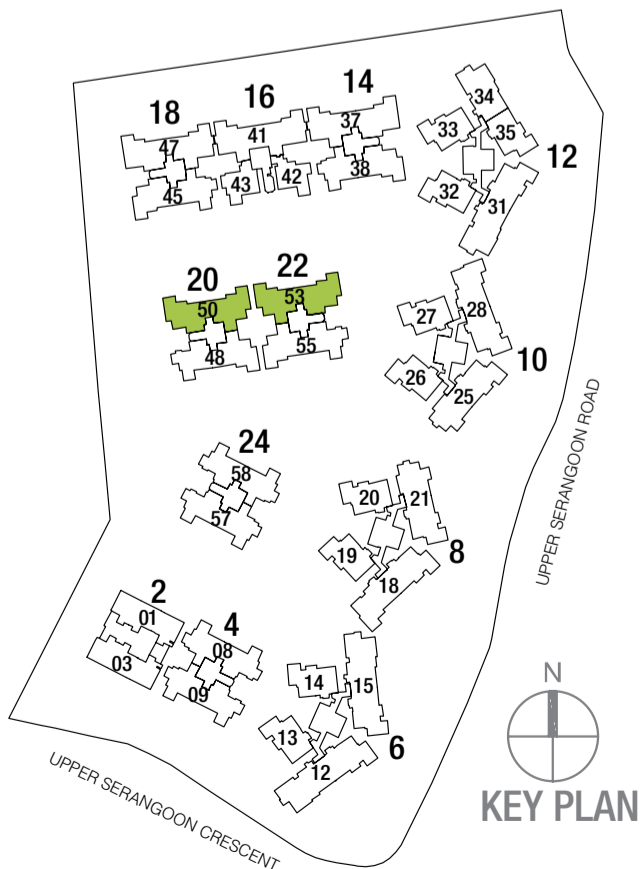
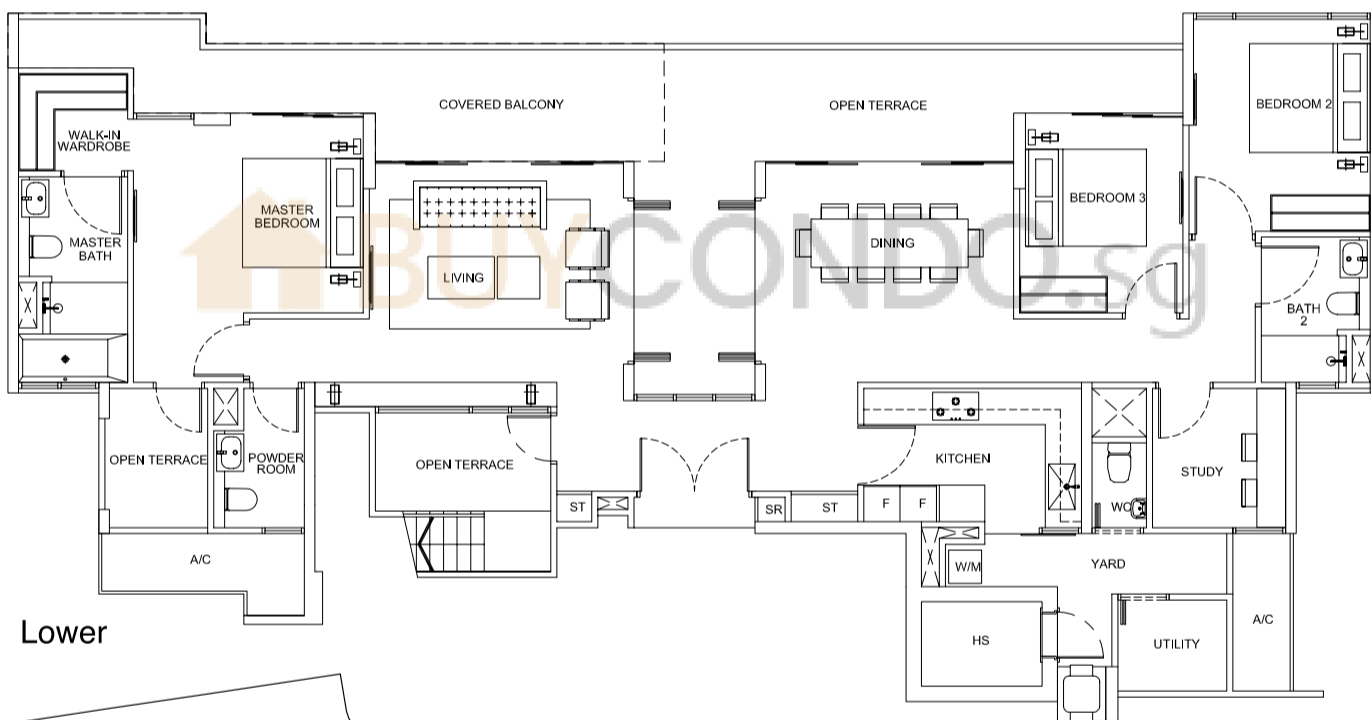
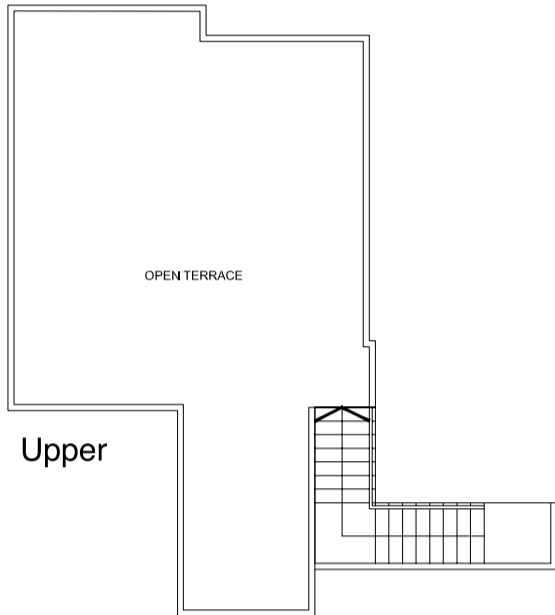
Penthouse

TYPE PH6

242 sq m (2,604 sq ft)

#18-50

#18-53



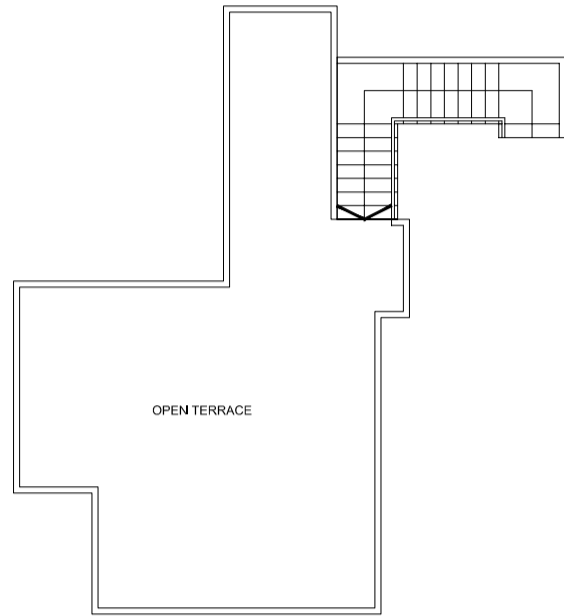
Penthouse

TYPE PH7

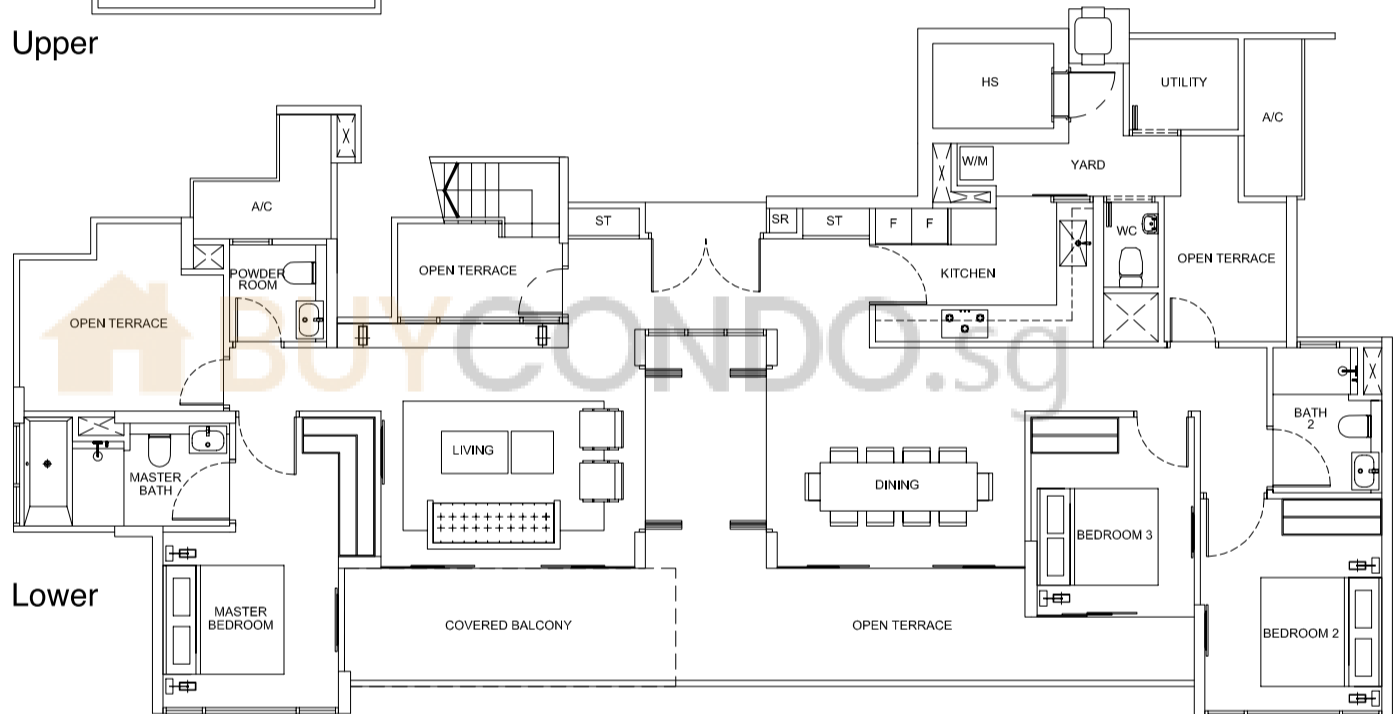
230 sq m (2,475 sq ft)

#18-48

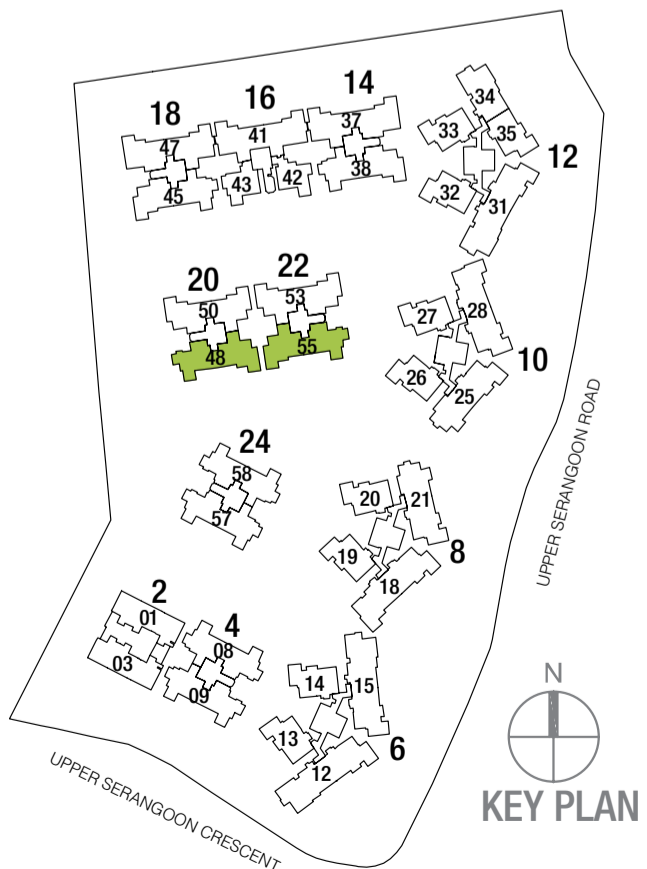
#18-55



Upper



Lower



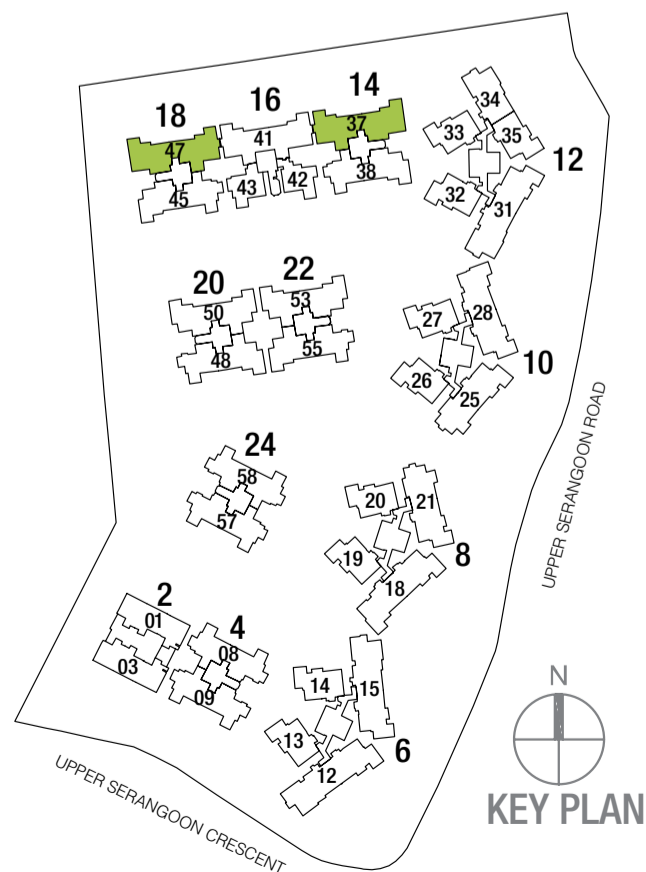
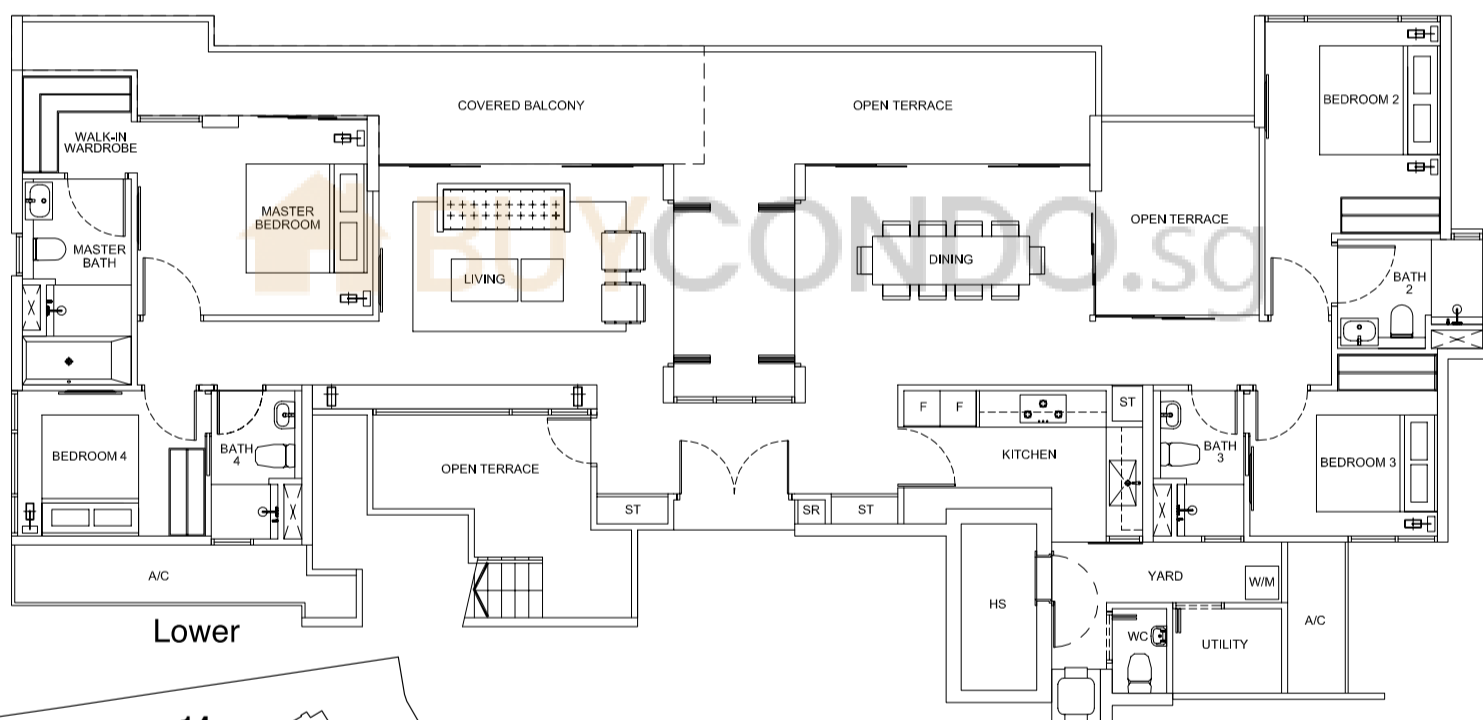
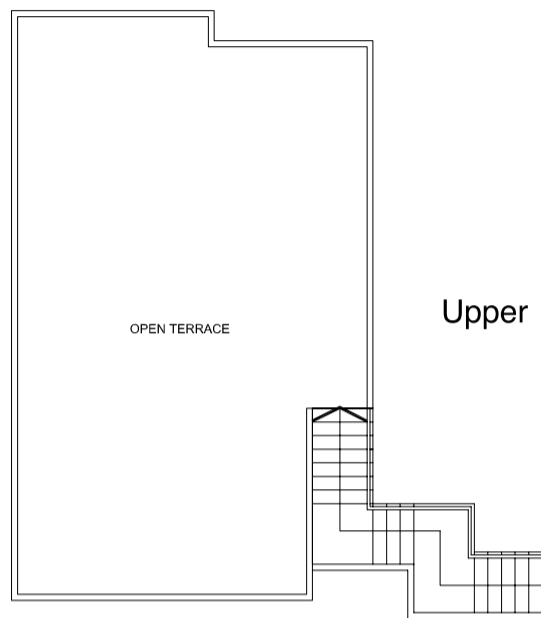
Penthouse

TYPE PH8

271 sq m (2,917 sq ft)

#18-37

#18-47



All plans are subject to changes as may be approved by the relevant authorities. All floor areas are approximate only and are subject to government resurvey.

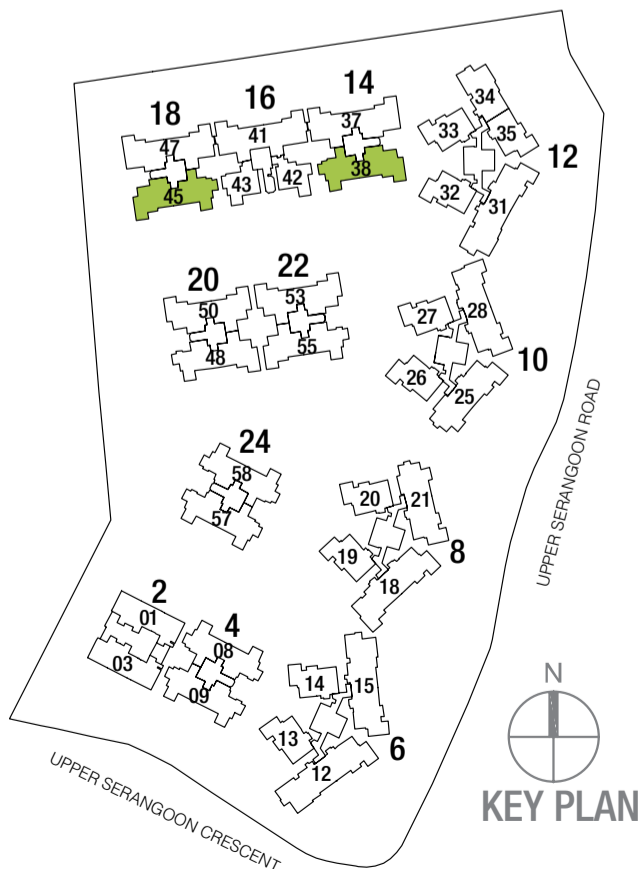
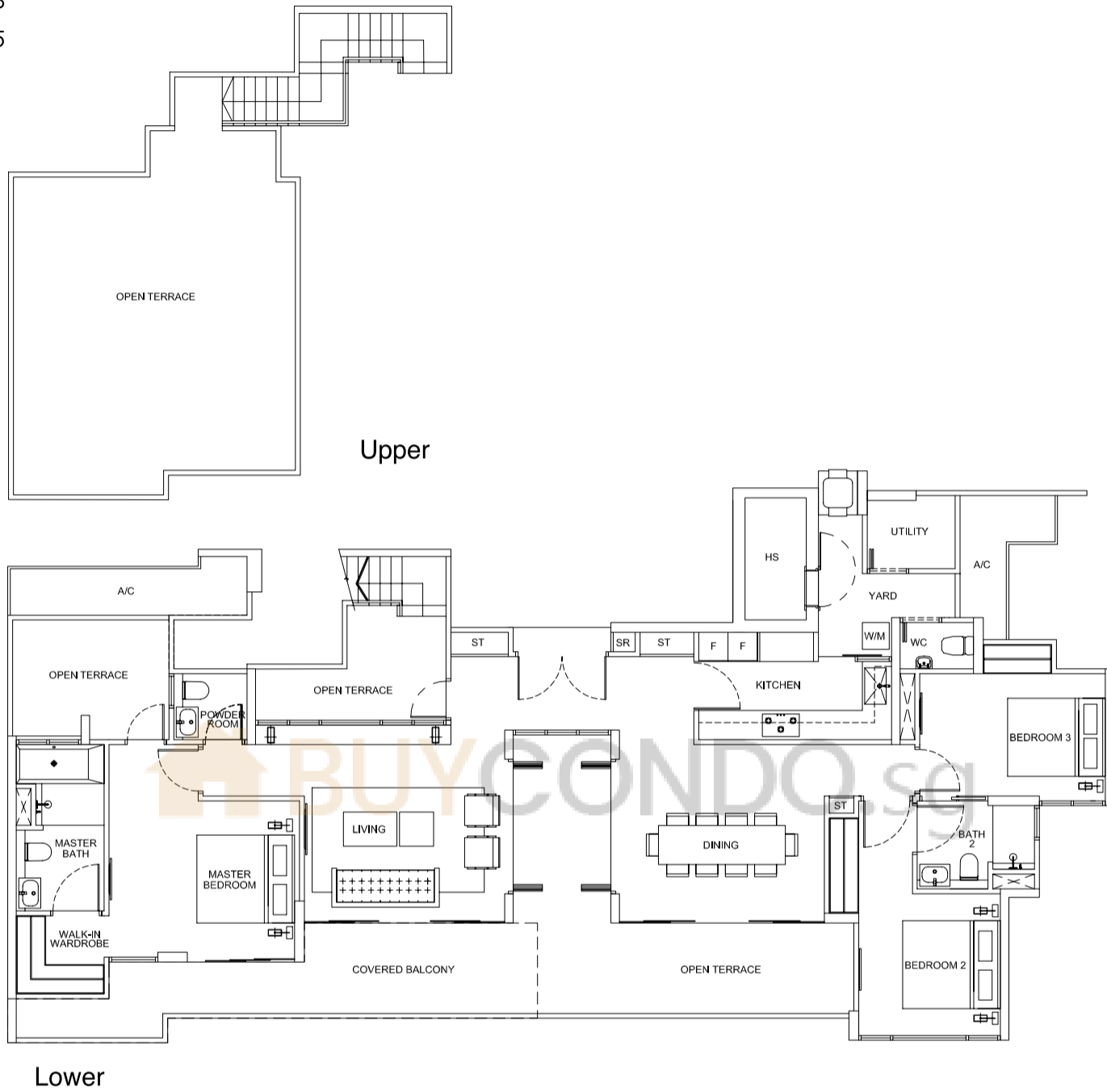
Penthouse

TYPE PH9

238 sq m (2,561 sq ft)

#18-38

#18-45



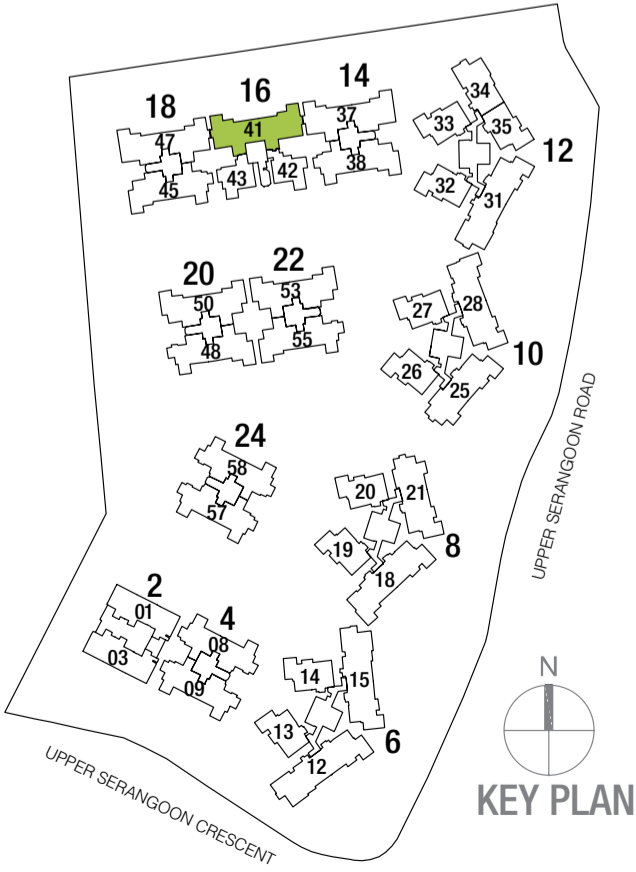
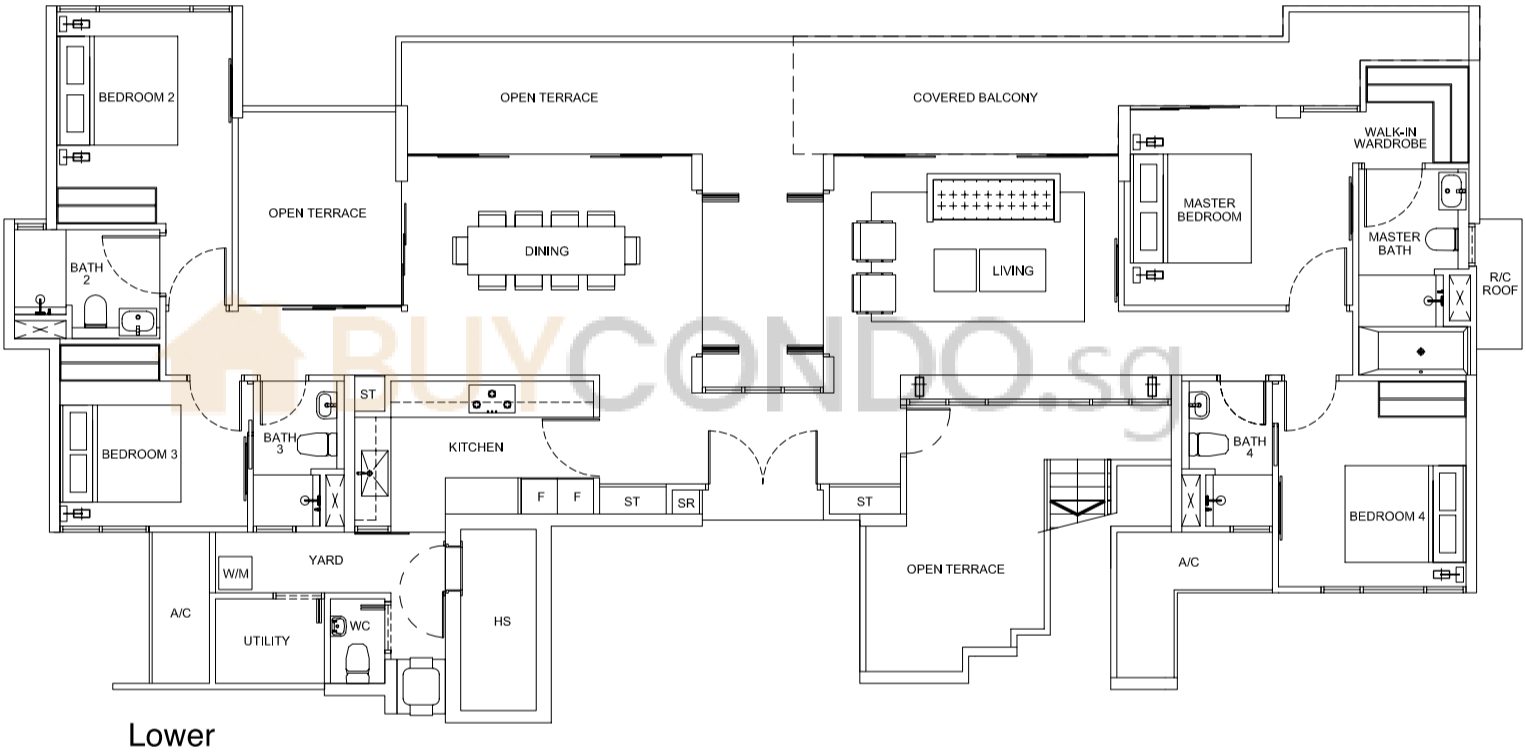
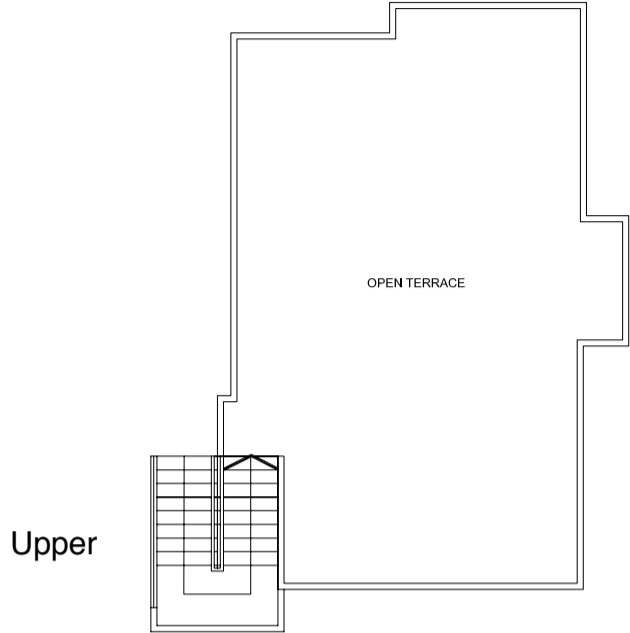
All plans are subject to changes as may be approved by the relevant authorities. All floor areas are approximate only and are subject to government resurvey.

Penthouse

TYPE PH10

276 sq m (2,970 sq ft)

#18-41



All plans are subject to changes as may be approved by the relevant authorities. All floor areas are approximate only and are subject to government resurvey.

Penthouse

TYPE PH1 1

169 sq m (1,819 sq ft)

#18-13

#18-14

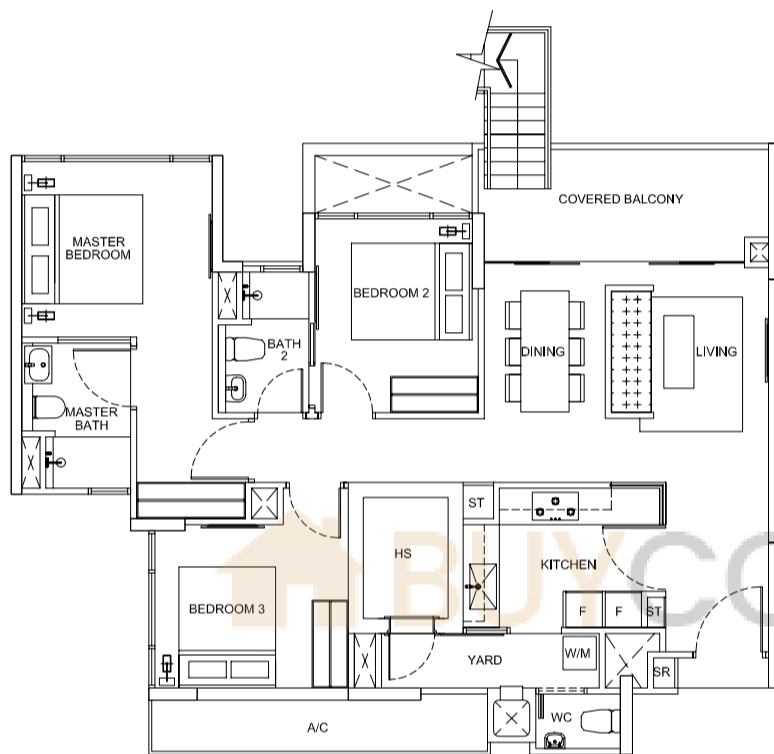
#18-19

#18-20

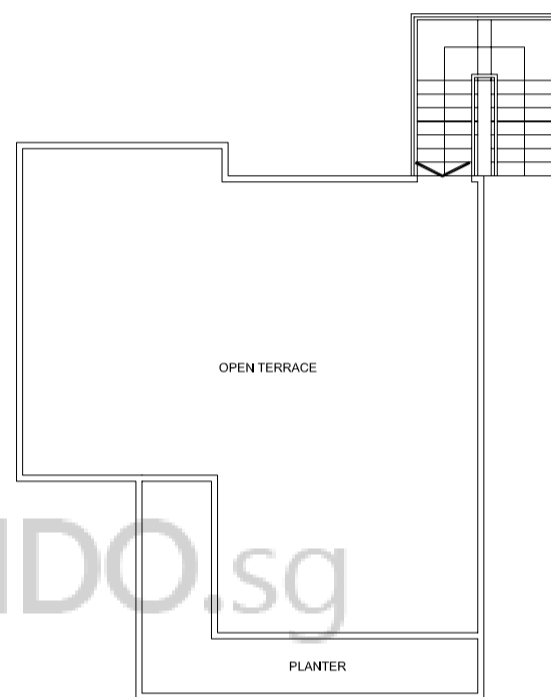
#18-26

#18-27

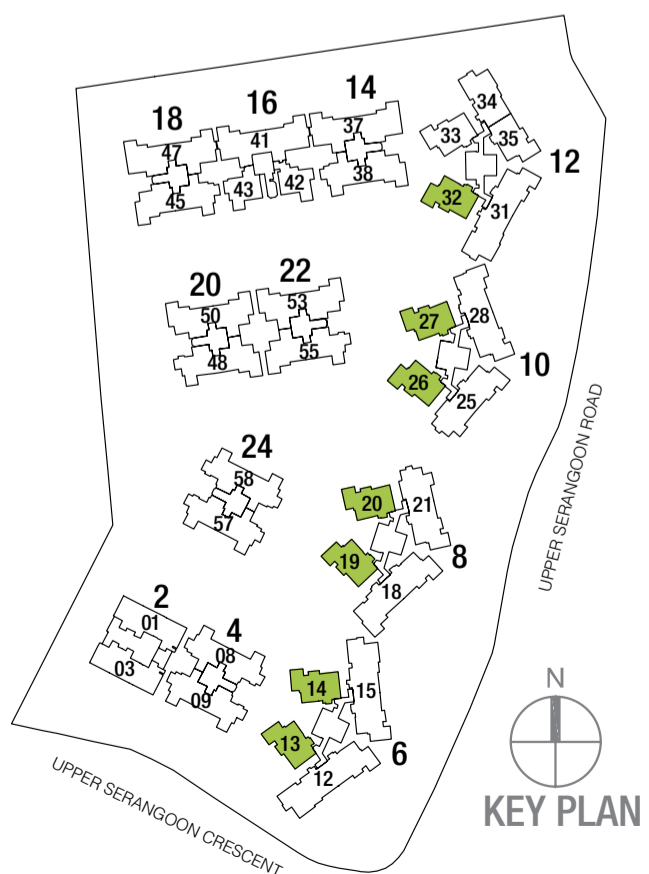
#18-32



Lower



Upper



KEY PLAN

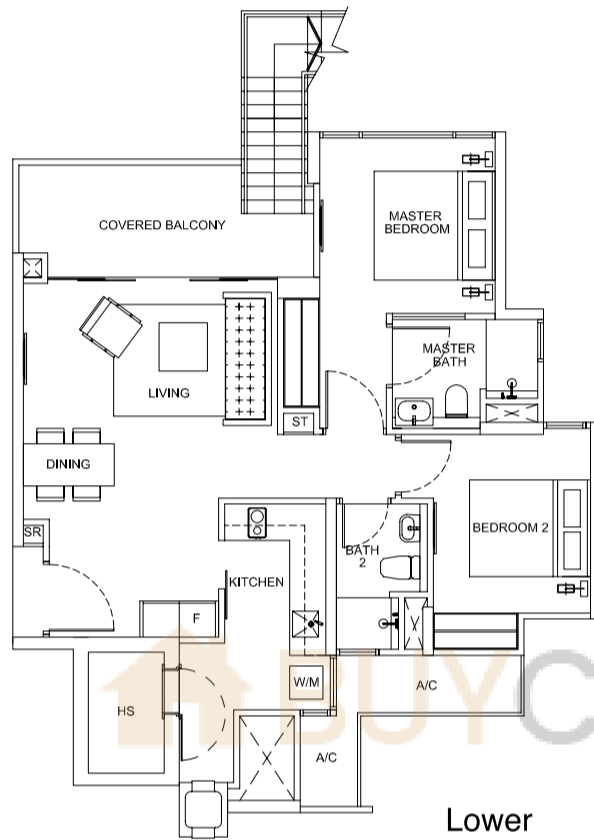
0 2.5 5 METERS

Penthouse

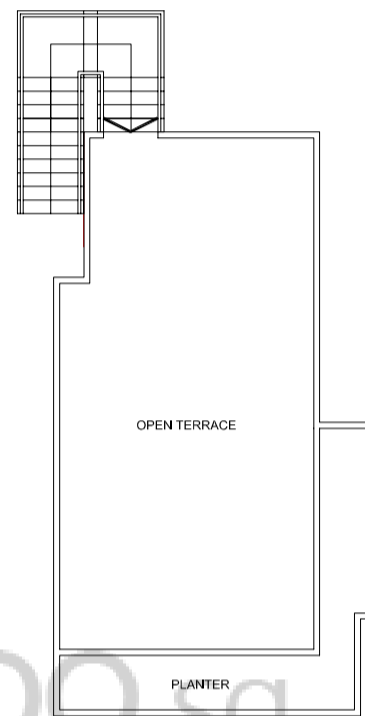
TYPE PH12

133 sq m (1,431 sq ft)

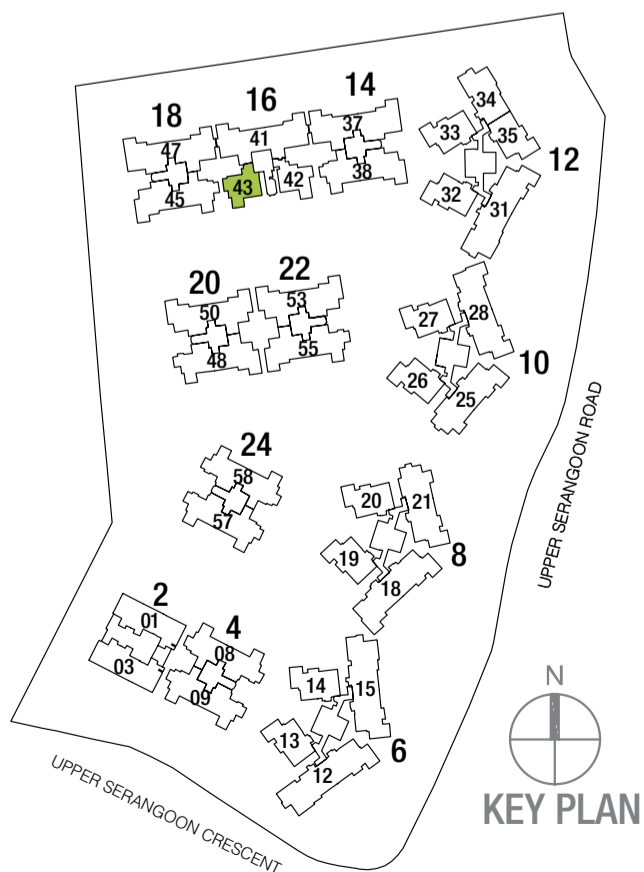
#18-43



Lower



Upper



KEY PLAN

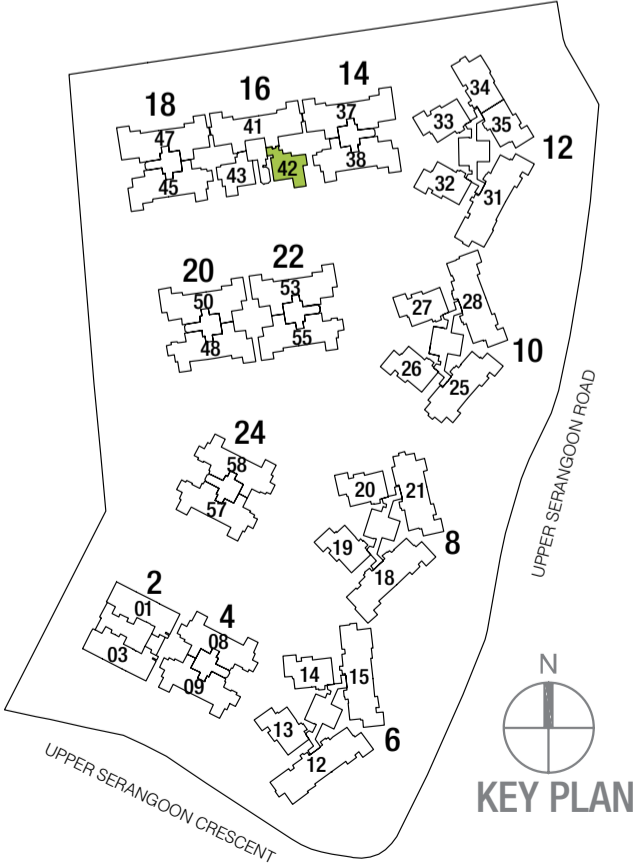
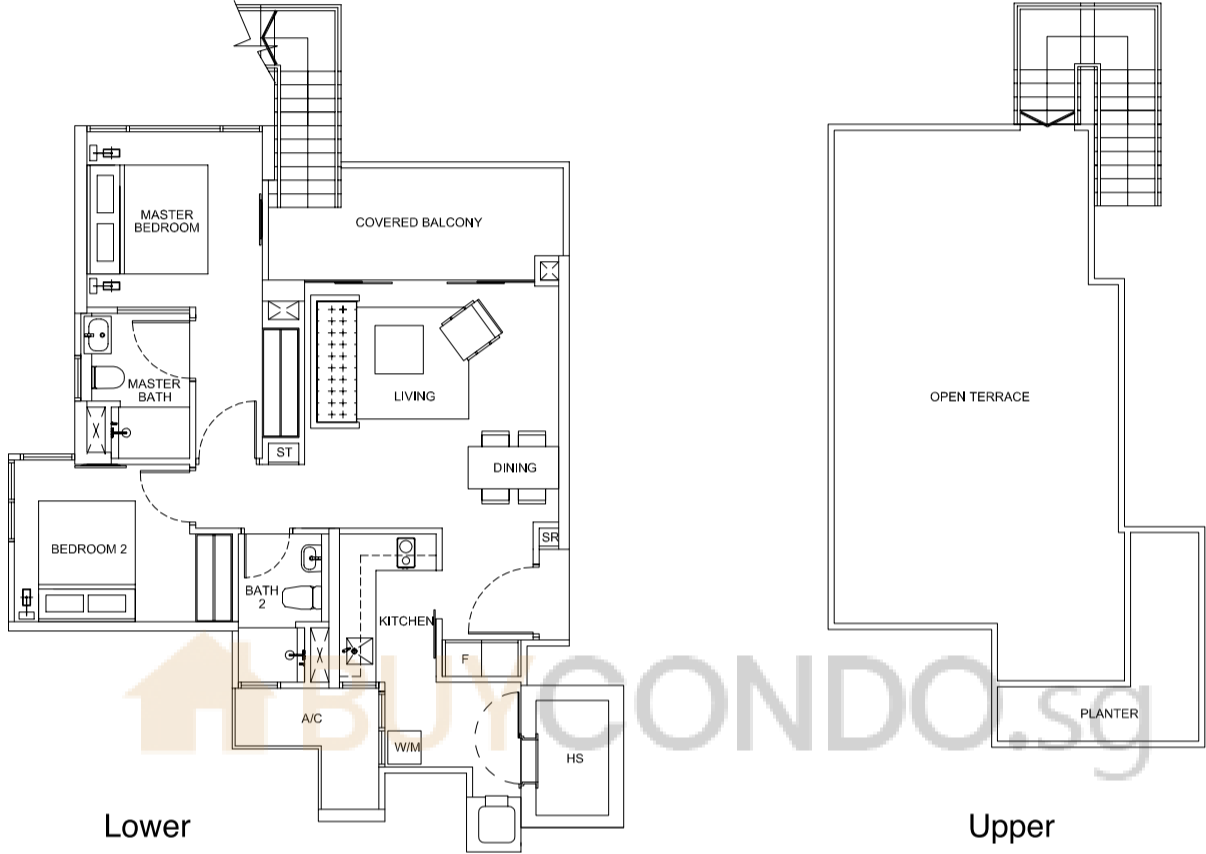
0 2.5 5 METERS

Penthouse

TYPE PH13

133 sq m (1,431 sq ft)

#18-42



All plans are subject to changes as may be approved by the relevant authorities. All floor areas are approximate only and are subject to government resurvey.