

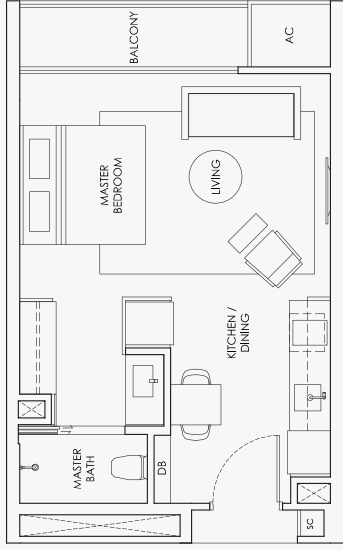
STUDIO

Type AI

38 sq m / 409 sq ft

Mirror image

- #02-21 #04-25
- #03-21 #05-25
- #04-21
- #05-21



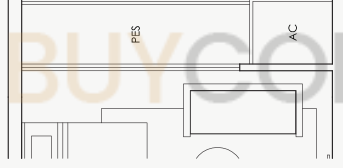
Type AI-P

38 sq m / 409 sq ft

Mirror image

#01-20

#01-21

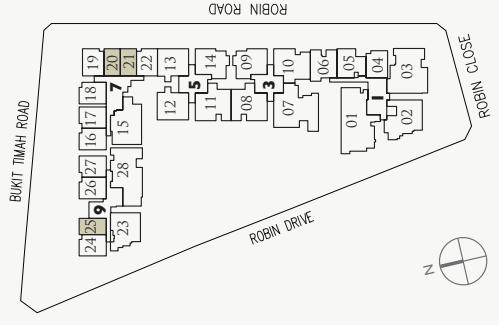
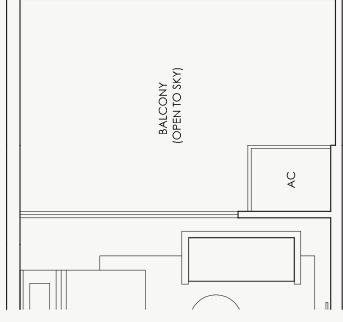


Type AI-B

49 sq m / 527 sq ft

#03-25

*refer to key plan for actual orientation



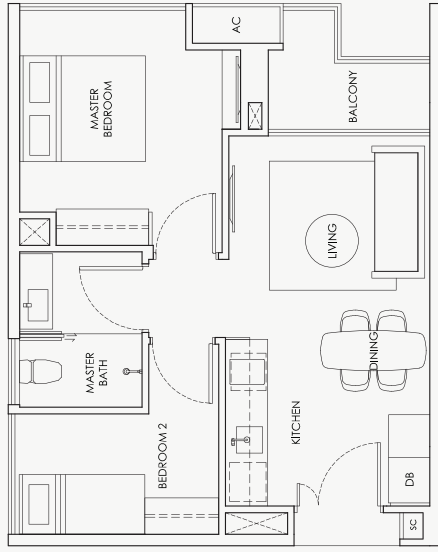
Area include A/C, ledge, balcony, PES and roof terrace. Some units are mirror images of the apartment plans shown in the brochure. Please refer to the key plans for orientation. The plans are correct at the time of printing and are subject to such amendments as may be required or approved by the relevant authorities. The plans are not drawn to scale and are for the purpose of visual representation of the different available layouts. All floor areas are estimates only and are subject to final survey.

2 BEDROOM

Type B1

50 sq m / 538 sq ft

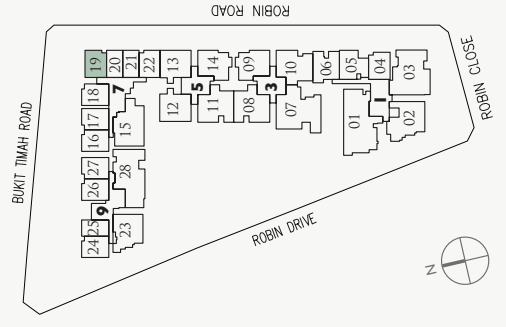
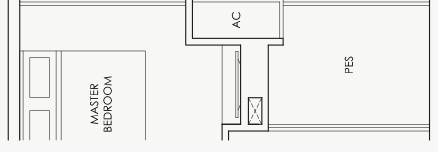
- #02-19
- #03-19
- #04-19
- #05-19



Type B1-P

51 sq m / 549 sq ft

- #01-19

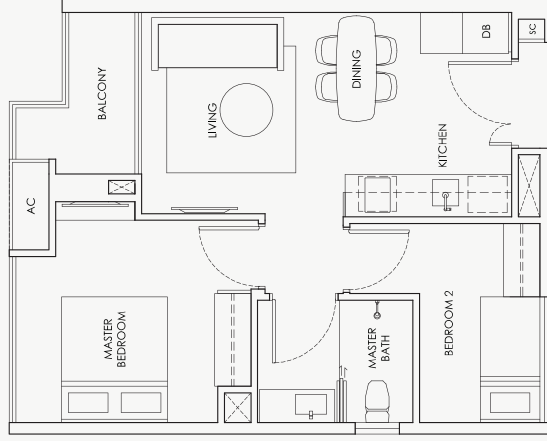


Area include A/C ledge, balcony, PEs and roof terrace. Some units are mirror images of the apartment plans shown in the brochure. Please refer to the key plans for orientation. The plans are correct at the time of printing and are subject to such amendments as may be required or approved by the relevant authorities. The plans are not drawn to scale and are for the purpose of visual representation of the different available layouts. All floor areas are estimates only and are subject to final survey.

2 BEDROOM

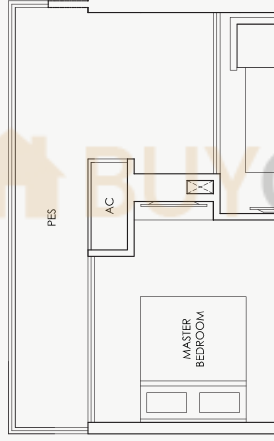
Type B1a
50 sq m / 538 sq ft

Mirror image
#02-16 #04-24
#03-16 #05-24
#04-16
#05-16



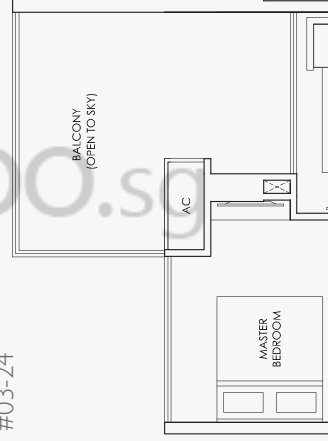
Type B1a-P
59 sq m / 635 sq ft

#01-16



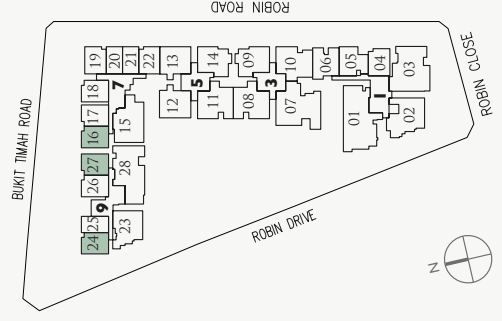
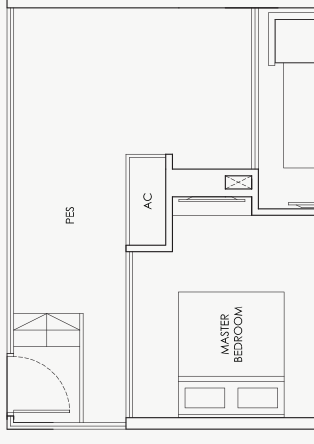
Type B1a-B
59 sq m / 635 sq ft

#03-24



Type B1a-PI
62 sq m / 667 sq ft

Mirror image
#01-27

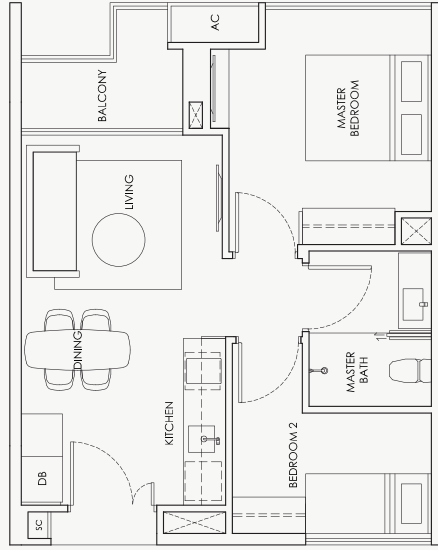


Area include A/C ledge, balcony, PES and roof terrace. Some units are mirror images of the apartment plans shown in the brochure. Please refer to the key plans for orientation. The plans are correct at the time of printing and are subject to such amendments as may be required or approved by the relevant authorities. The plans are not drawn to scale and are for the purpose of visual representation of the different available layouts. All floor areas are estimates only and are subject to final survey.

2 BEDROOM

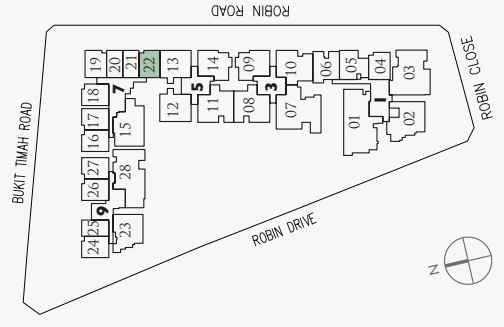
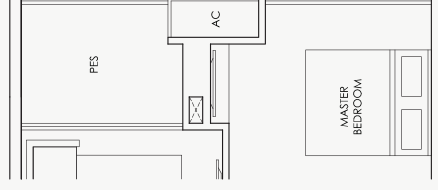
Type B1b
50 sq m / 538 sq ft

- #02-22
- #03-22
- #04-22
- #05-22



Type B1b-P
51 sq m / 549 sq ft

- #01-22

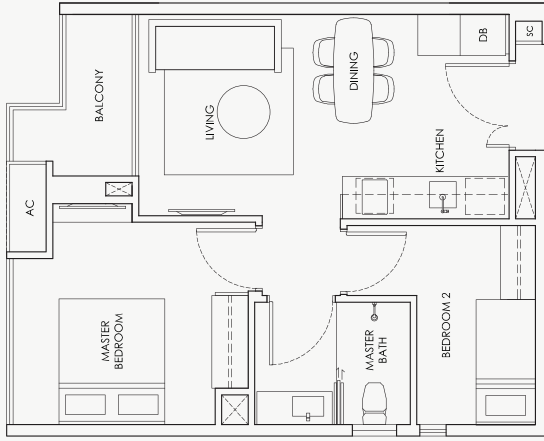


Area include A/C ledge, balcony, PES and roof terrace. Some units are mirror images of the apartment plans shown in the brochure. Please refer to the key plans for orientation. The plans are correct at the time of printing and are subject to such amendments as may be required or approved by the relevant authorities. The plans are not drawn to scale and are for the purpose of visual representation of the different available layouts. All floor areas are estimates only and are subject to final survey.

2 BEDROOM

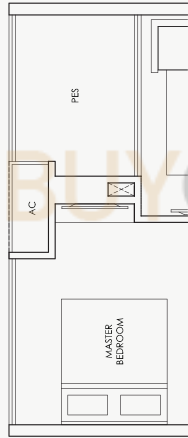
Type B1c
50 sq m / 538 sq ft

Mirror image
#02-18 #04-26
#03-18 #05-26
#04-18 #04-17
#05-18 #05-17



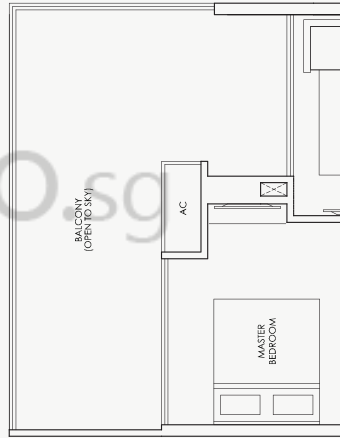
Type B1c-P
51 sq m / 549 sq ft

#01-18



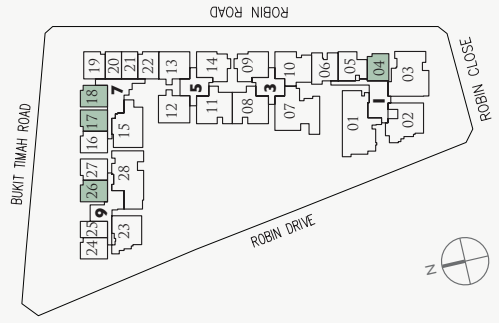
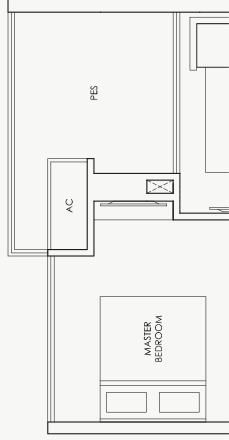
Type B1c-B
66 sq m / 710 sq ft

#03-26



Type B1c-PI
53 sq m / 570 sq ft

Mirror image
#01-04
#01-17



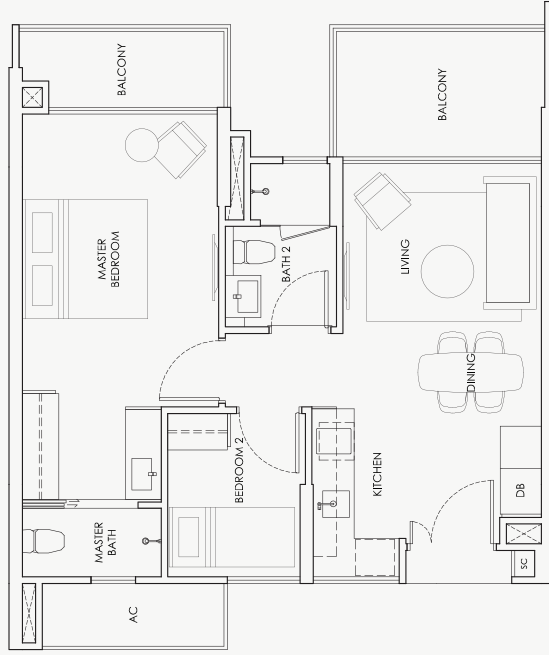
Area include A/C ledge, balcony, PES and roof terrace. Some units are mirror images of the apartment plans shown in the brochure. Please refer to the key plans for orientation. The plans are correct at the time of printing and are subject to such amendments as may be required or approved by the relevant authorities. The plans are not drawn to scale and are for the purpose of visual representation of the different available layouts. All floor areas are estimates only and are subject to final survey.

2 BEDROOM

Type B2

66 sq m / 710 sq ft

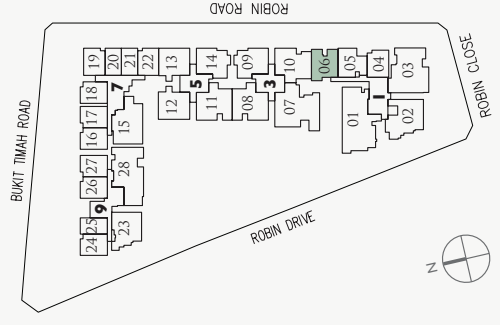
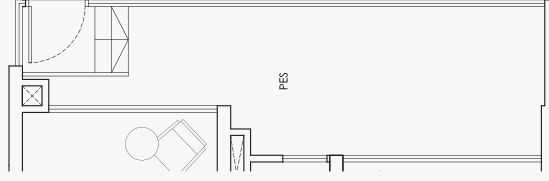
- #02-06
- #03-06
- #04-06



Type B2-P

72 sq m / 775 sq ft

#01-06



Area include A/C ledge, balcony, PES and roof terrace. Some units are mirror images of the apartment plans shown in the brochure. Please refer to the key plans for orientation. The plans are correct at the time of printing and are subject to such amendments as may be required or approved by the relevant authorities. The plans are not drawn to scale and are for the purpose of visual representation of the different available layouts. All floor areas are estimates only and are subject to final survey.

2 BEDROOM

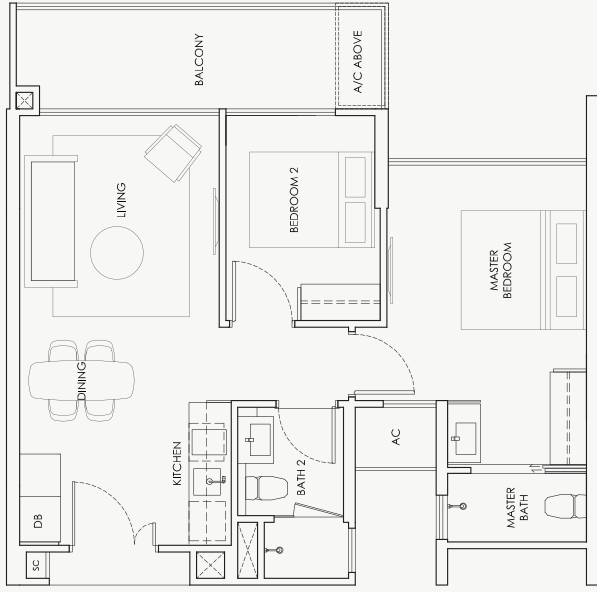
Type B3

64 sq m / 689 sq ft

#02-05

#03-05

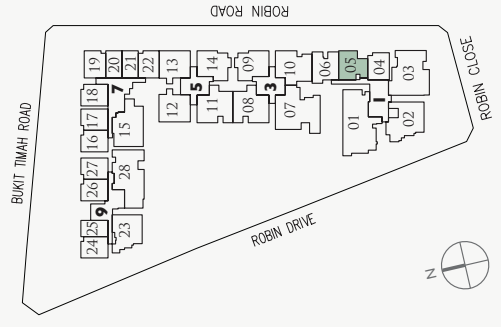
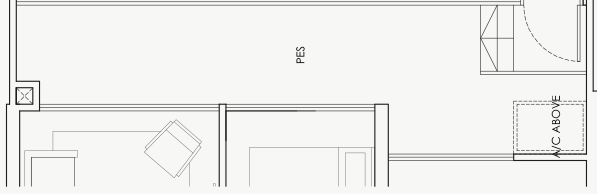
#04-05



Type B3-P

72 sq m / 775 sq ft

#01-05



Area include A/C ledge, balcony, PES and roof terrace. Some units are mirror images of the apartment plans shown in the brochure. Please refer to the key plans for orientation. The plans are correct at the time of printing and are subject to such amendments as may be required or approved by the relevant authorities. The plans are not drawn to scale and are for the purpose of visual representation of the different available layouts. All floor areas are estimates only and are subject to final survey.

2 BEDROOM

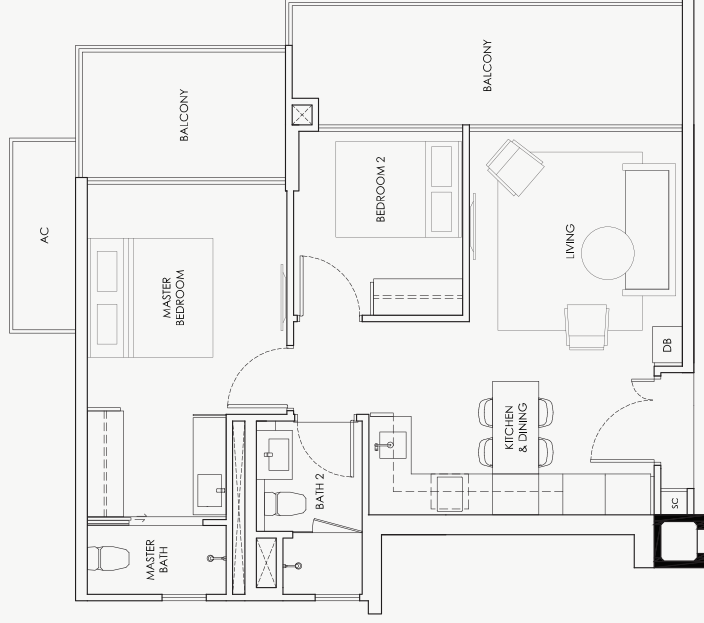
Type B4

77 sq m / 829 sq ft

- #02-09
- #03-09
- #04-09

Mirror image

- #02-14
- #03-14
- #04-14



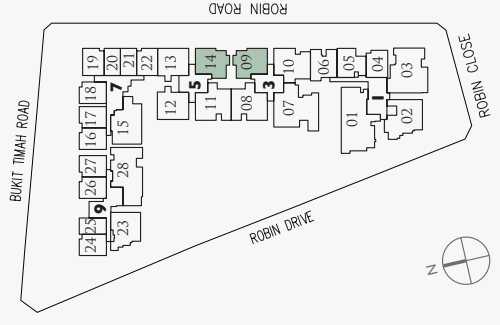
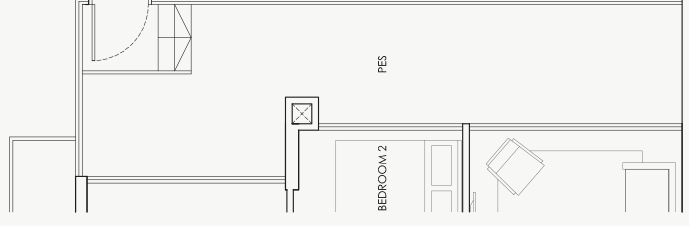
Type B4-P

79 sq m / 850 sq ft

- #01-09

Mirror image

- #01-14



Area include A/C ledge, balcony, PES and roof terrace. Some units are mirror images of the apartment plans shown in the brochure. Please refer to the key plans for orientation. The plans are correct at the time of printing and are subject to such amendments as may be required or approved by the relevant authorities. The plans are not drawn to scale and are for the purpose of visual representation of the different available layouts. All floor areas are estimates only and are subject to final survey.

2 BEDROOM

Type B5

79 sq m / 850 sq ft

#02-12

#03-12

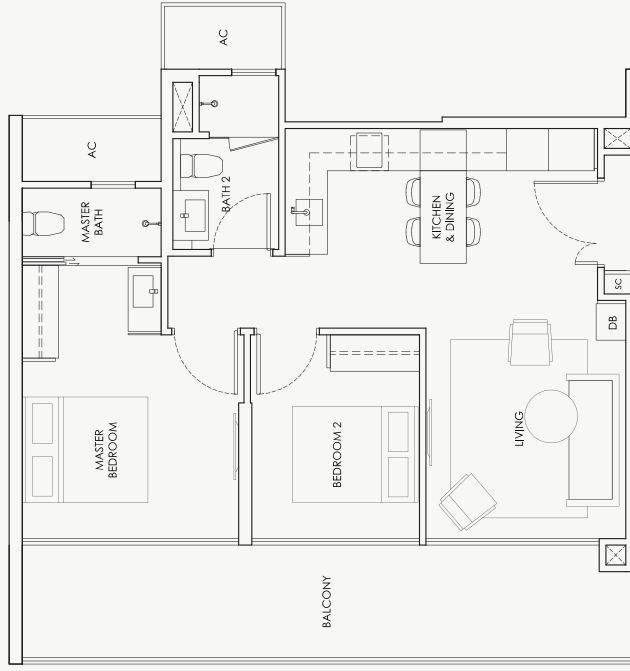
#04-12

Mirror image

#02-13

#03-13

#04-13



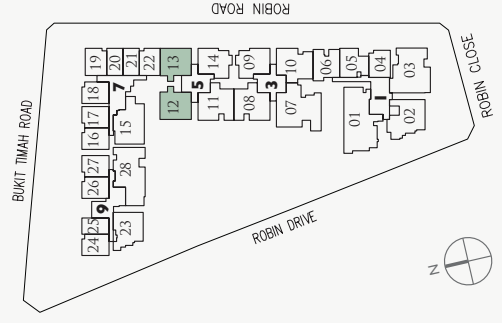
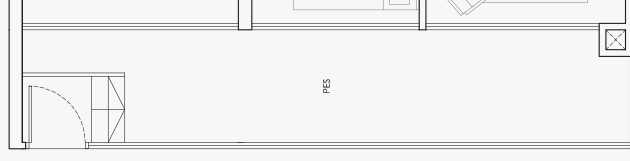
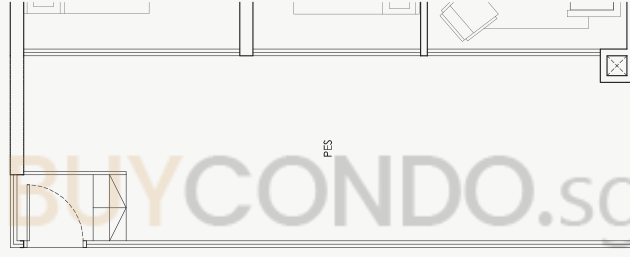
Type B5-P

89 sq m / 958 sq ft

#01-12

Mirror image

#01-13



Area include A/C, ledge, balcony, PES and roof terrace. Some units are mirror images of the apartment plans shown in the brochure. Please refer to the key plans for orientation. The plans are correct at the time of printing and are subject to such amendments as may be required or approved by the relevant authorities. The plans are not drawn to scale and are for the purpose of visual representation of the different available layouts. All floor areas are estimates only and are subject to final survey.

3 BEDROOM

Type CI

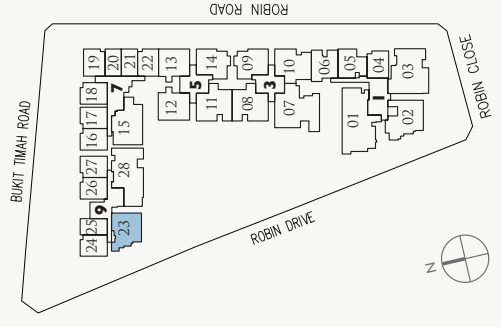
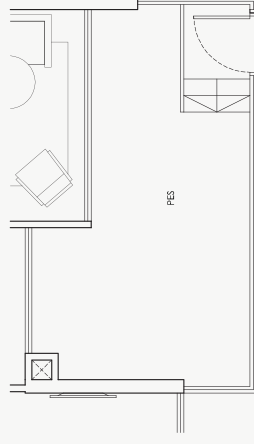
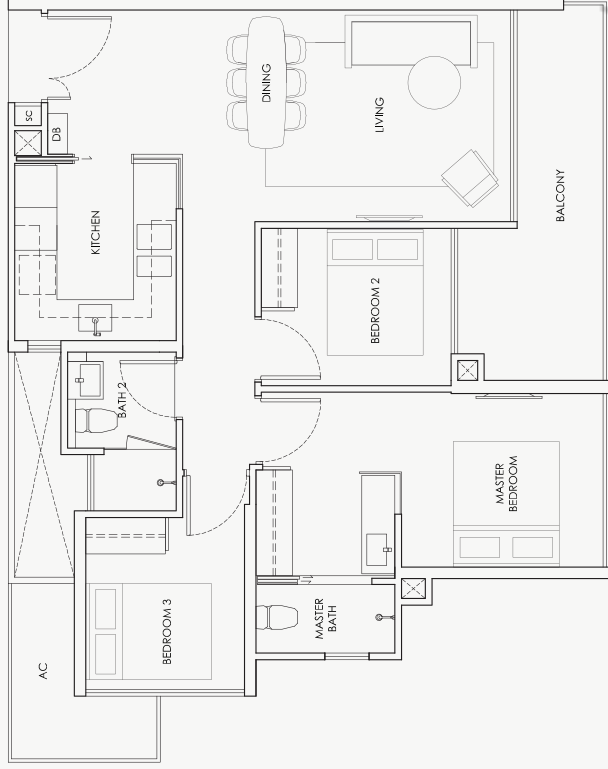
86 sq m / 926 sq ft

- #02-23
- #03-23
- #04-23
- #05-23

Type CI-P

92 sq m / 990 sq ft

#01-23



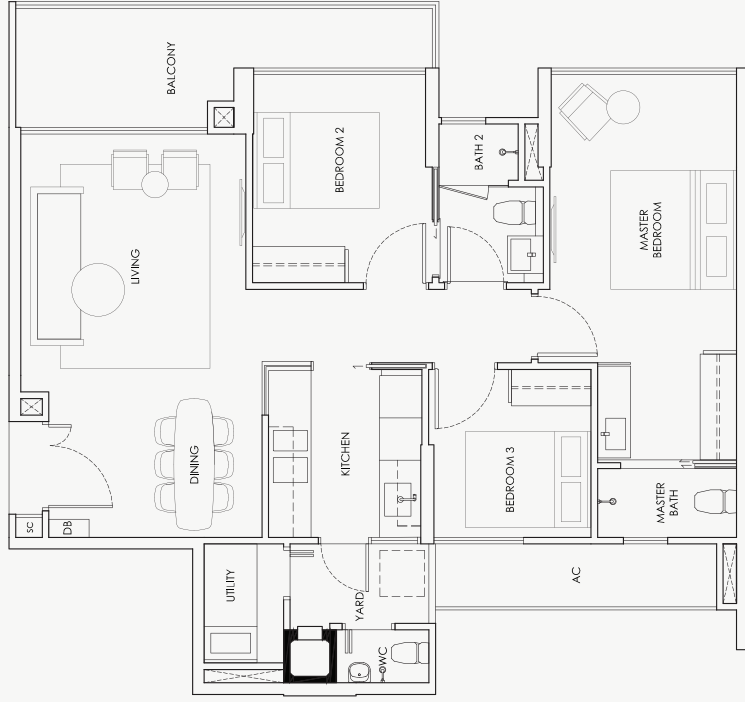
Area include A/C ledge, balcony, PES and roof terrace. Some units are mirror images of the apartment plans shown in the brochure. Please refer to the key plans for orientation. The plans are correct at the time of printing and are subject to such amendments as may be required or approved by the relevant authorities. The plans are not drawn to scale and are for the purpose of visual representation of the different available layouts. All floor areas are estimates only and are subject to final survey.

3 BEDROOM

Type C2

94 sq m / 1012 sq ft

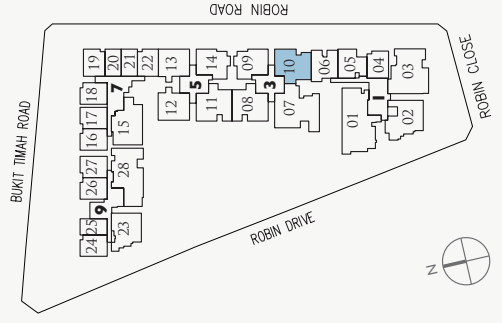
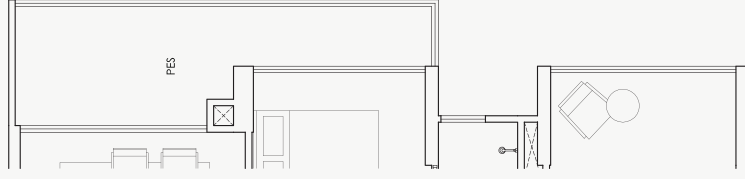
- #02-10
- #03-10
- #04-10



Type C2-P

94 sq m / 1012 sq ft

- #01-10



Area include A/C ledge, balcony, PES and roof terrace. Some units are mirror images of the apartment plans shown in the brochure. Please refer to the key plans for orientation. The plans are correct at the time of printing and are subject to such amendments as may be required or approved by the relevant authorities. The plans are not drawn to scale and are for the purpose of visual representation of the different available layouts. All floor areas are estimates only and are subject to final survey.

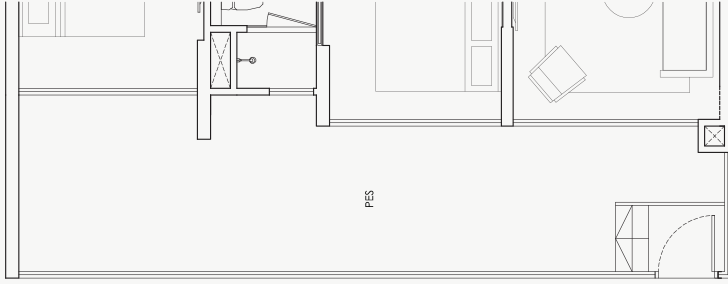
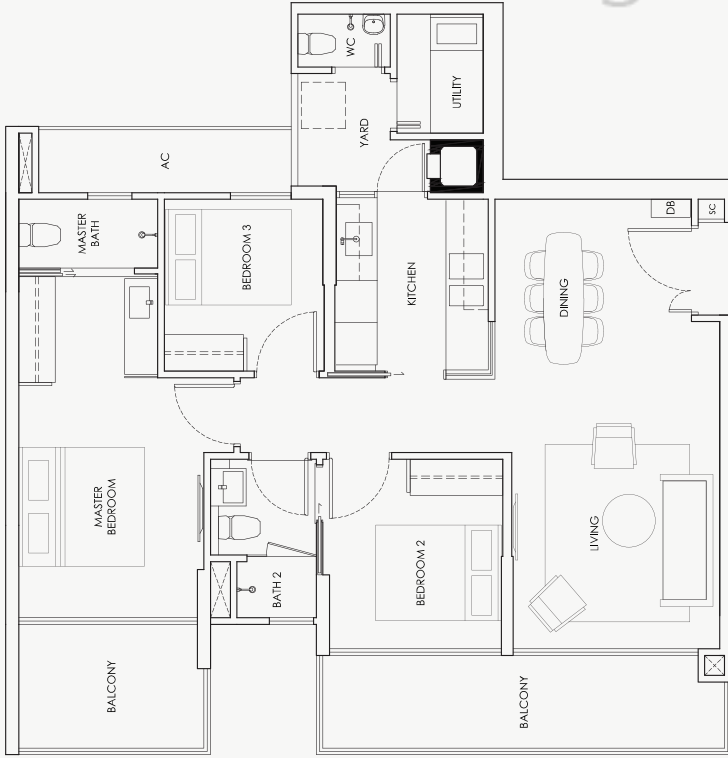
3 BEDROOM

Type C3

99 sq m / 1066 sq ft

- #02-08
- #03-08
- #04-08

Mirror image
#02-11
#03-11
#04-11

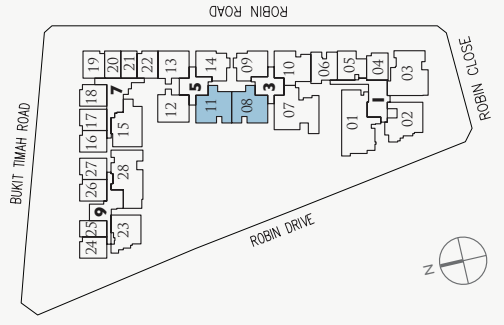


Type C3-P

111 sq m / 1195 sq ft

- #01-08

Mirror image
#01-11



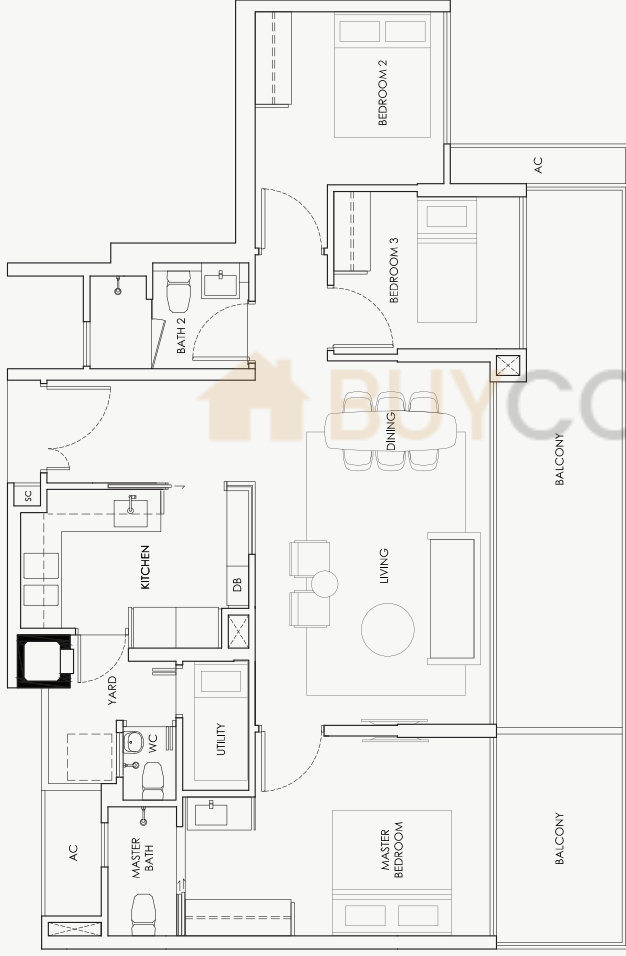
Area include A/C ledge, balcony, PES and roof terrace. Some units are mirror images of the apartment plans shown in the brochure. Please refer to the key plans for orientation. The plans are correct at the time of printing and are subject to such amendments as may be required or approved by the relevant authorities. The plans are not drawn to scale and are for the purpose of visual representation of the different available layouts. All floor areas are estimates only and are subject to final survey.

3 BEDROOM

Type C4

107 sq m / 1152 sq ft

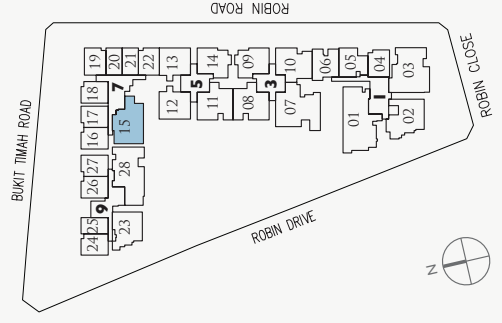
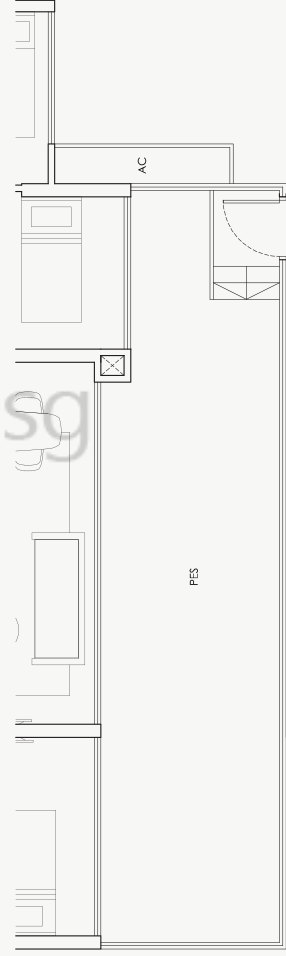
- #02-15
- #03-15
- #04-15
- #05-15



Type C4-P

117 sq m / 1259 sq ft

- #01-15



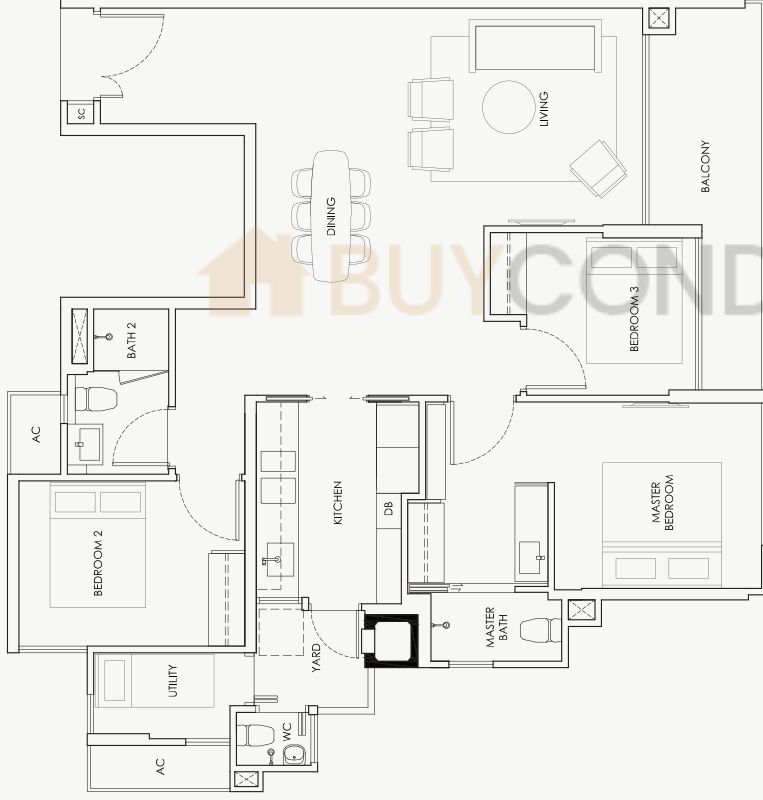
Area include A/C ledge, balcony, PFS and roof terrace. Some units are mirror images of the apartment plans shown in the brochure. Please refer to the key plans for orientation. The plans are correct at the time of printing and are subject to such amendments as may be required or approved by the relevant authorities. The plans are not drawn to scale and are for the purpose of visual representation of the different available layouts. All floor areas are estimates only and are subject to final survey.

3 BEDROOM

Type C5

104 sq m / 1119 sq ft

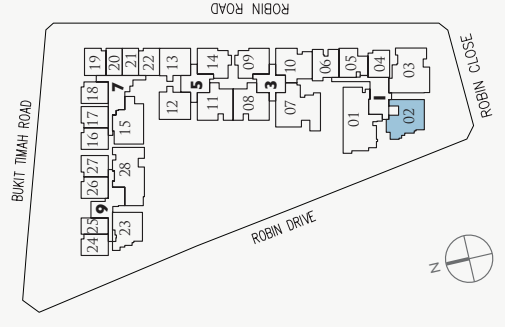
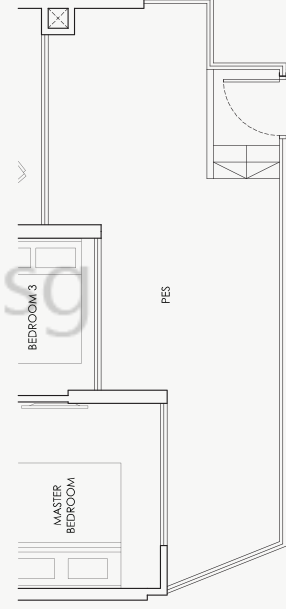
- #02-02
- #03-02
- #04-02



Type C5-P

119 sq m / 1281 sq ft

- #01-02



Area include A/C ledge, balcony, PES and roof terrace. Some units are mirror images of the apartment plans shown in the brochure. Please refer to the key plans for orientation. The plans are correct at the time of printing and are subject to such amendments as may be required or approved by the relevant authorities. The plans are not drawn to scale and are for the purpose of visual representation of the different available layouts. All floor areas are estimates only and are subject to final survey.

4 BEDROOM

Type DI

144 sq m / 1550 sq ft

#02-07

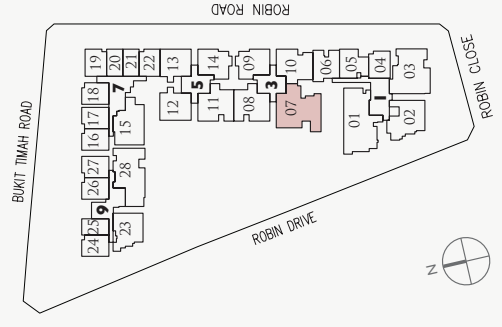
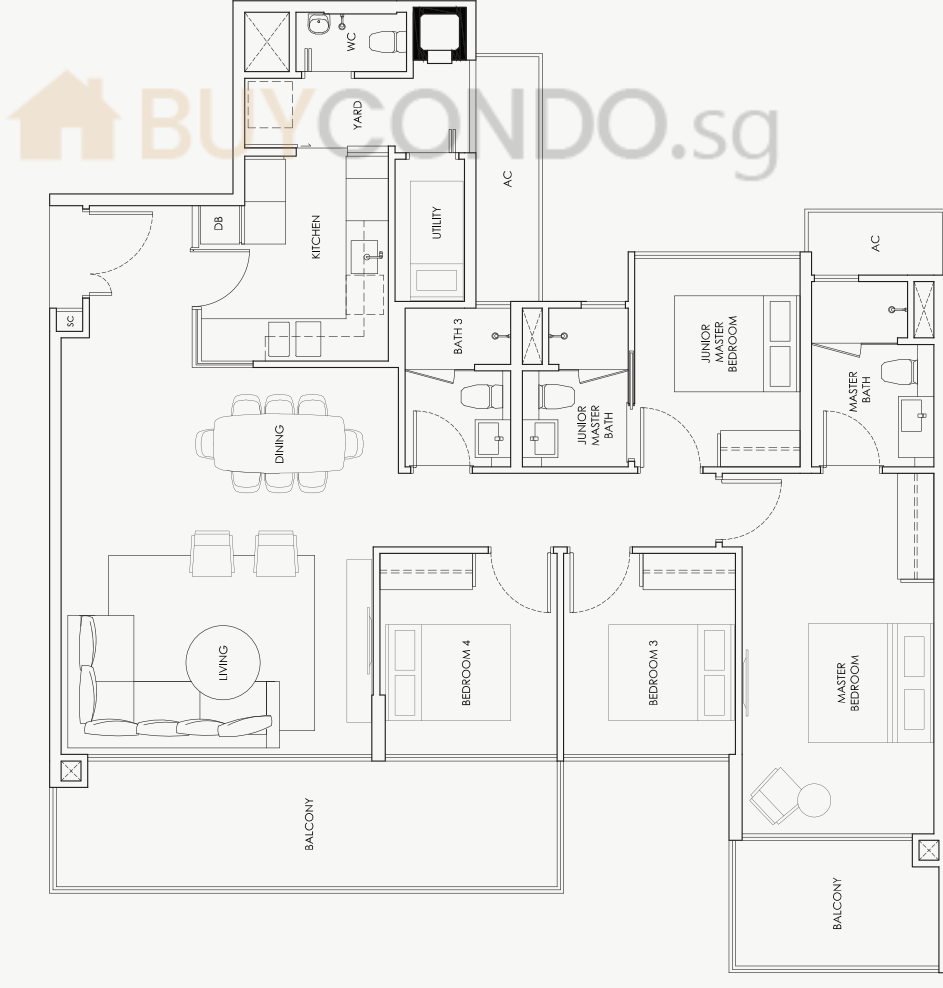
#03-07

#04-07

Type DI-P

143 sq m / 1539 sq ft

#01-07



Area include A/C ledge, balcony, PES and roof terrace. Some units are mirror images of the apartment plans shown in the brochure. Please refer to the key plans for orientation. The plans are correct at the time of printing and are subject to such amendments as may be required or approved by the relevant authorities. The plans are not drawn to scale and are for the purpose of visual representation of the different available layouts. All floor areas are estimates only and are subject to final survey.

4 BEDROOM

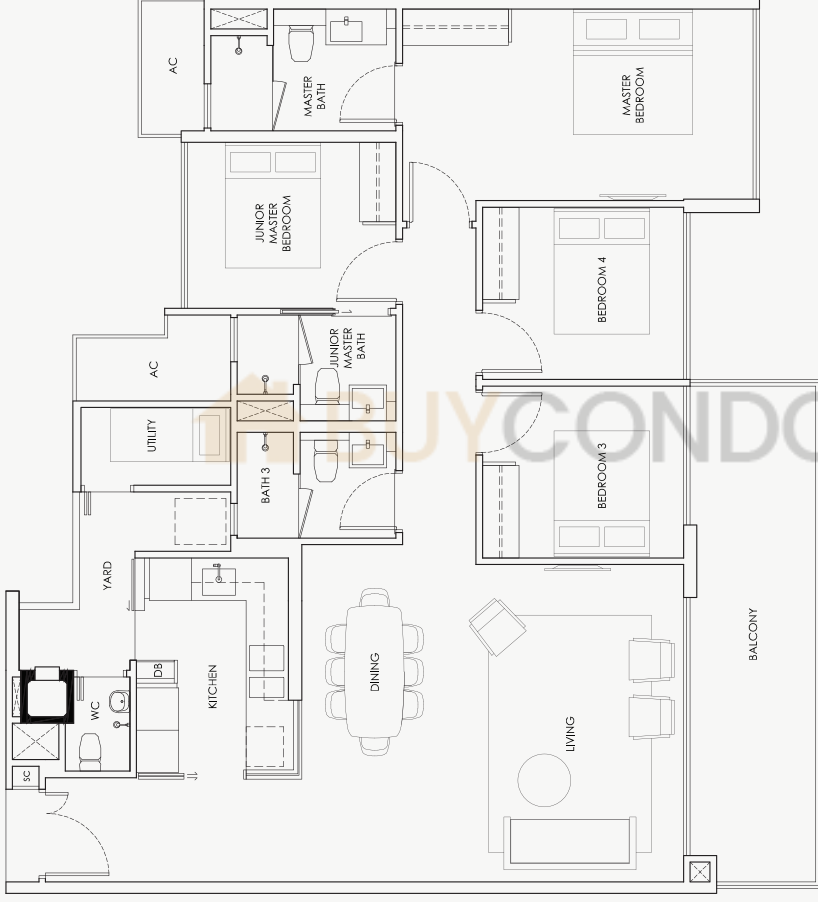
Type D2

138 sq m / 1485 sq ft

#02-03

#03-03

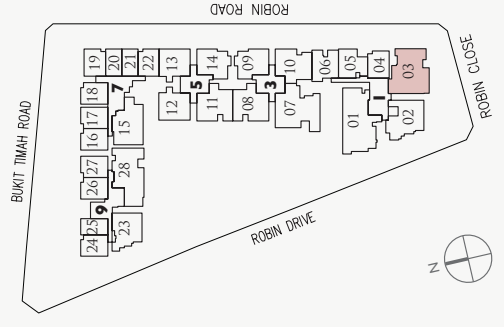
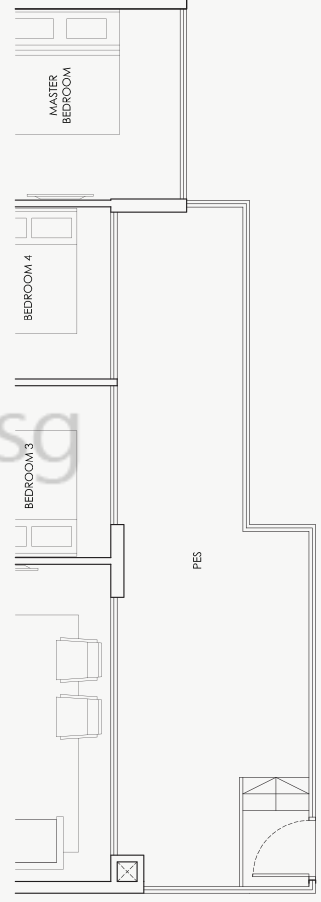
#04-03



Type D2 - P

148 sq m / 1593 sq ft

#01-03



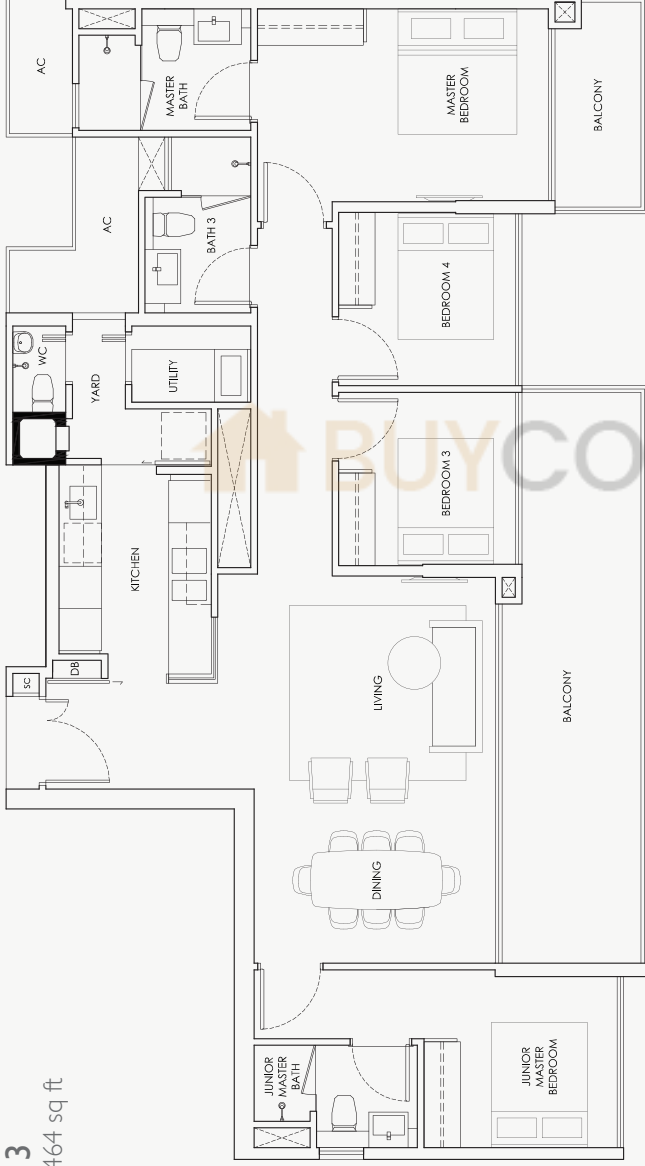
Area include A/C ledge, balcony, PES and roof terrace. Some units are mirror images of the apartment plans shown in the brochure. Please refer to the key plans for orientation. The plans are correct at the time of printing and are subject to such amendments as may be required or approved by the relevant authorities. The plans are not drawn to scale and are for the purpose of visual representation of the different available layouts. All floor areas are estimates only and are subject to final survey.

4 BEDROOM

Type D3

136 sq m / 1464 sq ft

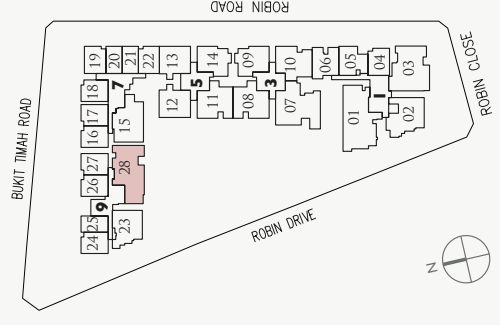
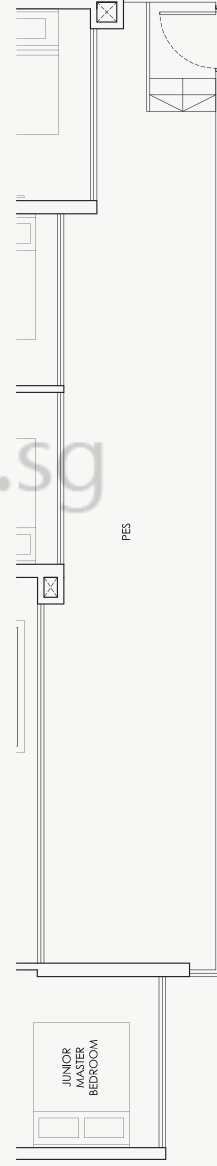
- #02-28
- #03-28
- #04-28
- #05-28



Type D3-P

148 sq m / 1593 sq ft

- #01-28



Area include A/C ledge, balcony, PES and roof terrace. Some units are mirror images of the apartment plans shown in the brochure. Please refer to the key plans for orientation. The plans are correct at the time of printing and are subject to such amendments as may be required or approved by the relevant authorities. The plans are not drawn to scale and are for the purpose of visual representation of the different available layouts. All floor areas are estimates only and are subject to final survey.

5 BEDROOM

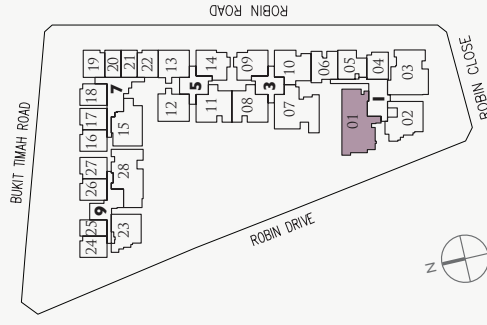
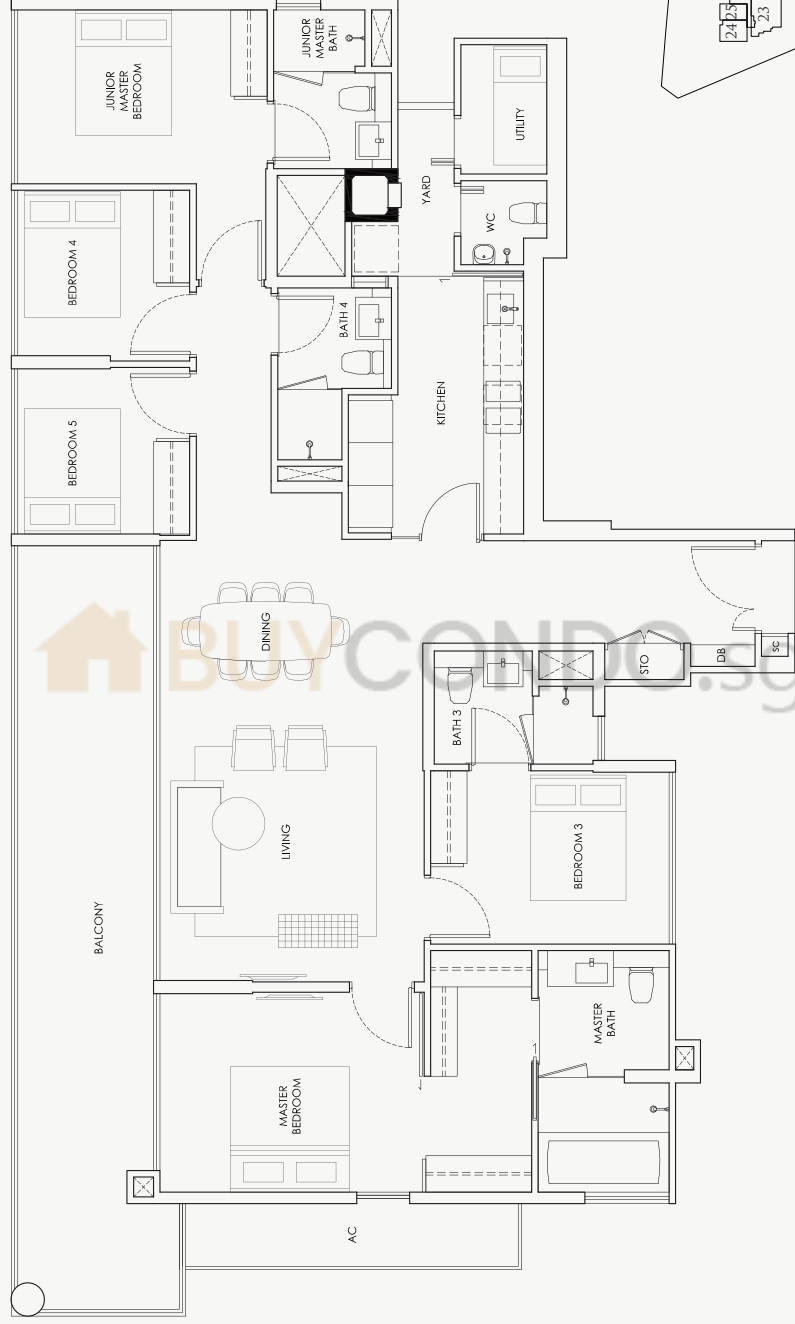
Type E1

170 sq m / 1830 sq ft

#02-01

#03-01

#04-01

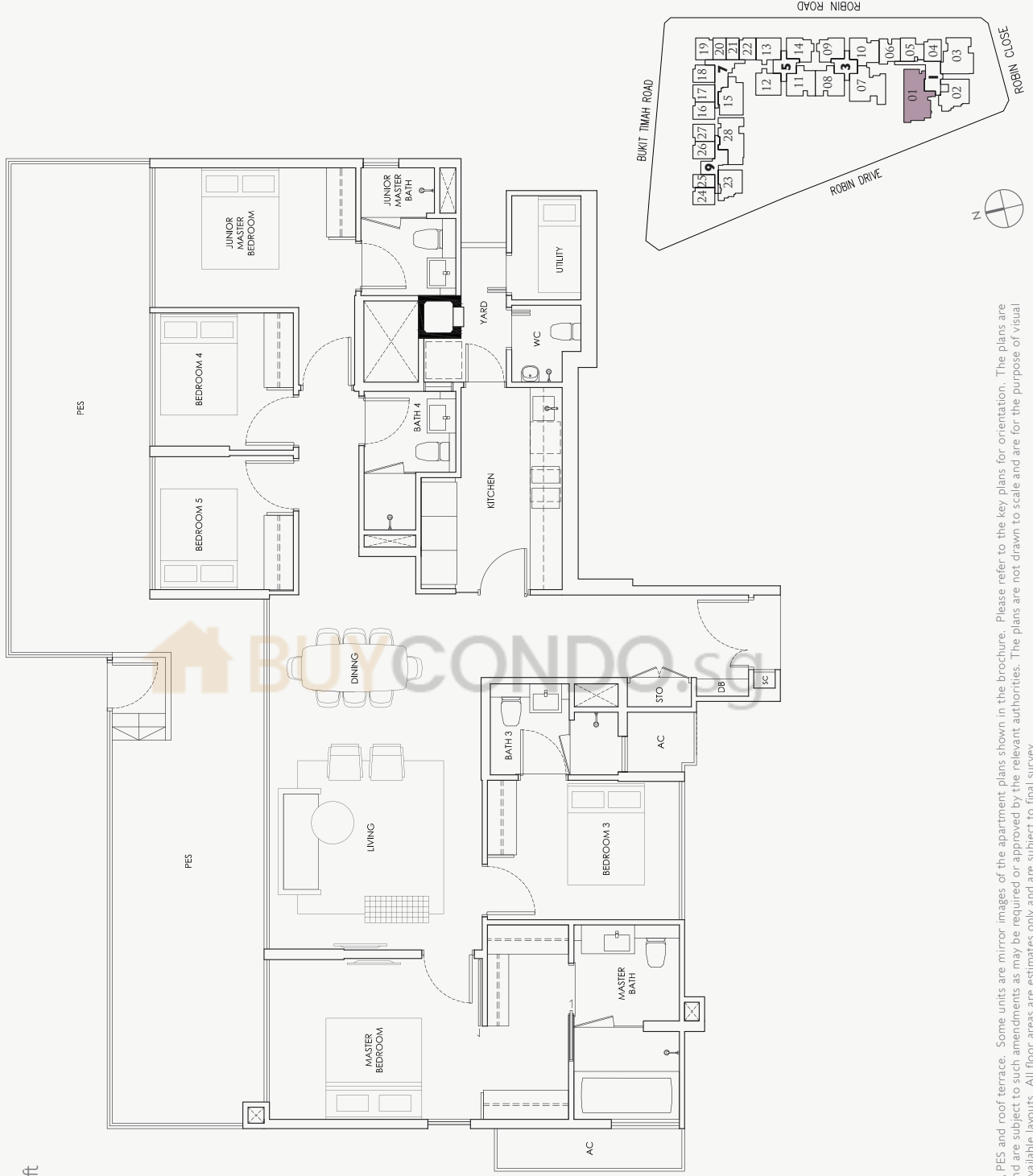


Area include A/C ledge, balcony, PES and roof terrace. Some units are mirror images of the apartment plans shown in the brochure. Please refer to the key plans for orientation. The plans are correct at the time of printing and are subject to such amendments as may be required or approved by the relevant authorities. The plans are not drawn to scale and are for the purpose of visual representation of the different available layouts. All floor areas are estimates only and are subject to final survey.

5 BEDROOM

Type EI-P
197 sq m / 2120 sq ft

#01-01



Area include A/C ledge, balcony, PES and roof terrace. Some units are mirror images of the apartment plans shown in the brochure. Please refer to the key plans for orientation. The plans are correct at the time of printing and are subject to such amendments as may be required or approved by the relevant authorities. The plans are not drawn to scale and are for the purpose of visual representation of the different available layouts. All floor areas are estimates only and are subject to final survey.

3 BEDROOM PENTHOUSE

Type PHI
150 sq m / 1615 sq ft

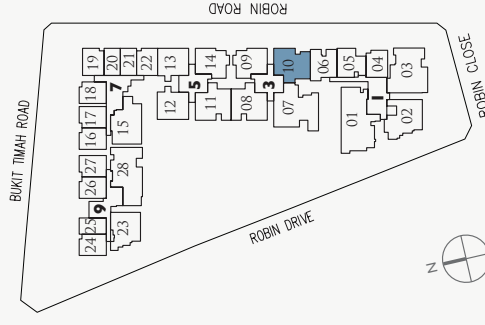
#05-10



Lower



Upper



Area include A/C ledge, balcony, PES and roof terrace. Some units are mirror images of the apartment plans shown in the brochure. Please refer to the key plans for orientation. The plans are correct at the time of printing and are subject to such amendments as may be required or approved by the relevant authorities. The plans are not drawn to scale and are for the purpose of visual representation of the different available layouts. All floor areas are estimates only and are subject to final survey.

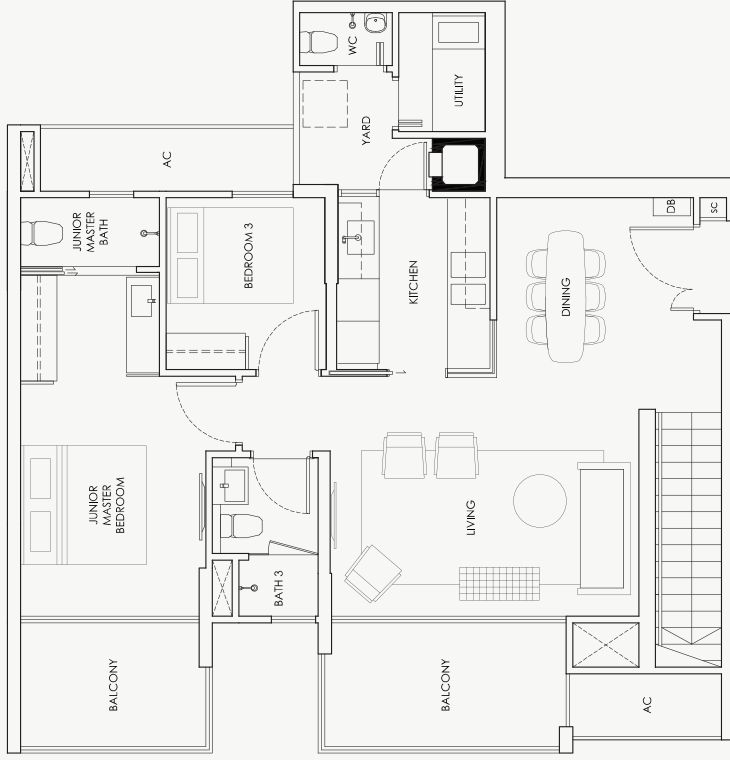
3 BEDROOM PENTHOUSE

Type PH2

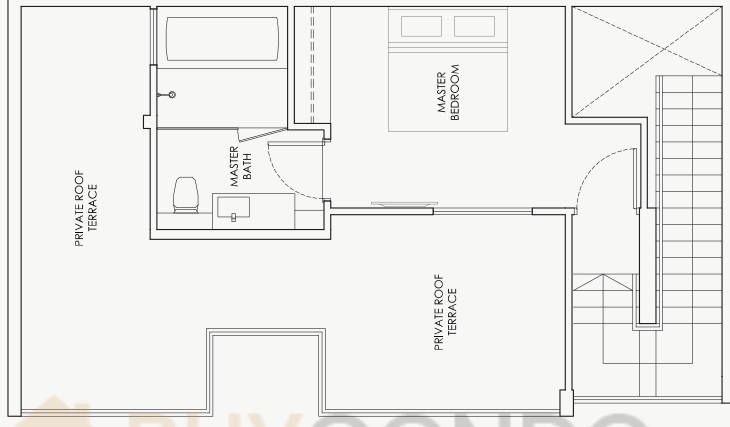
157 sq m / 1690 sq ft

#05-08

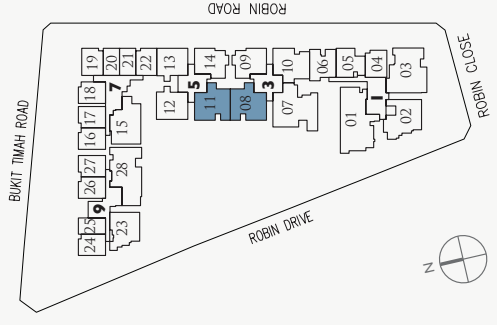
Mirror image
#05-11



Lower



Upper



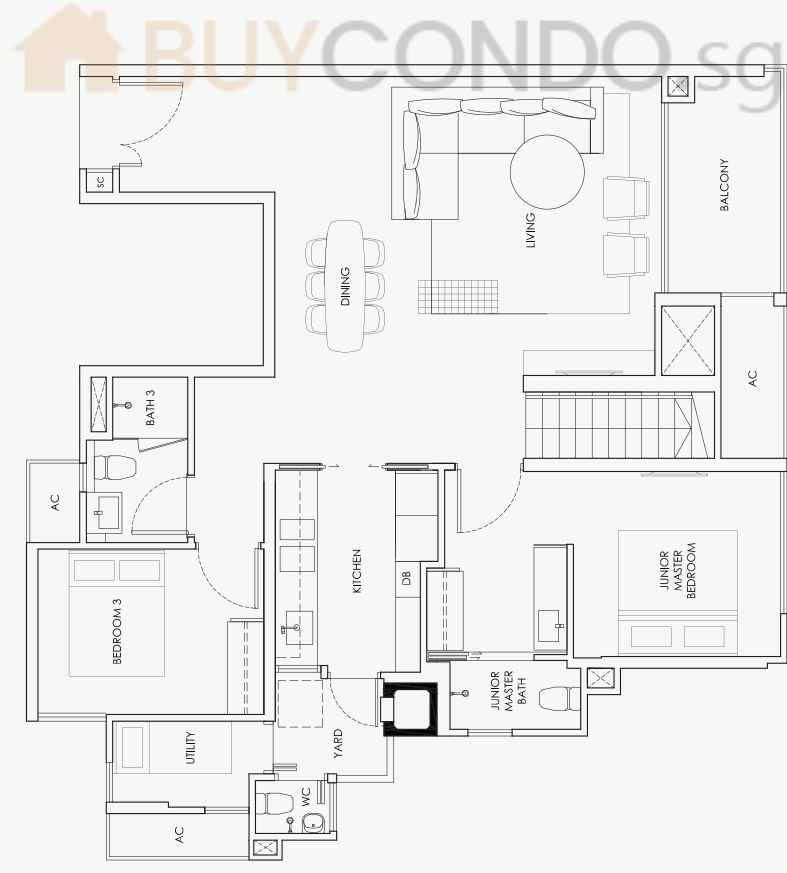
Area include A/C, ledge, balcony, PES, and roof terrace. Some units are mirror images of the apartment plans shown in the brochure. Please refer to the key plans for orientation. The plans are correct at the time of printing and are subject to such amendments as may be required or approved by the relevant authorities. The plans are not drawn to scale and are for the purpose of visual representation of the different available layouts. All floor areas are estimates only and are subject to final survey.

3 BEDROOM PENTHOUSE

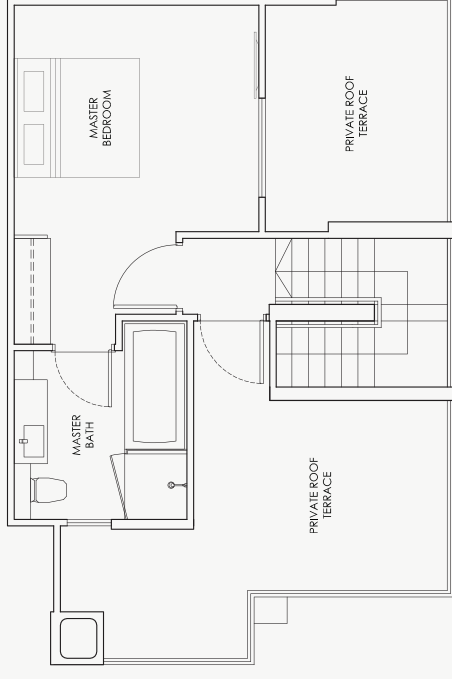
Type PH3

165 sq m / 1776 sq ft

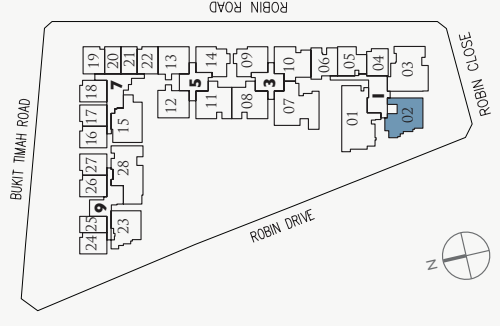
#05-02



Lower



Upper

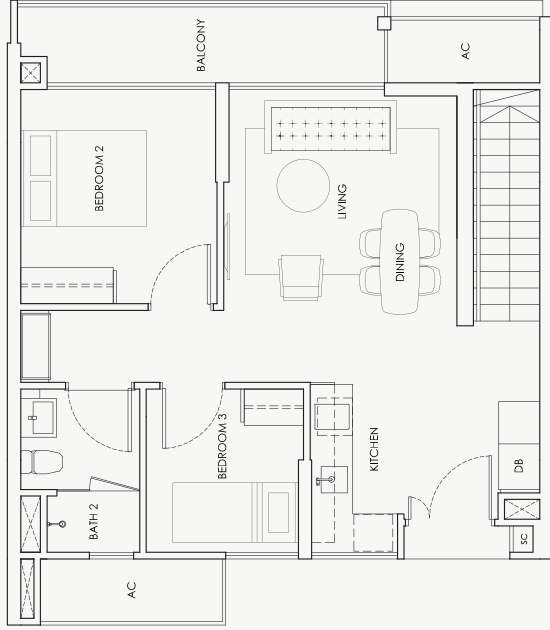


Area include A/C ledge, balcony, PES and roof terrace. Some units are mirror images of the apartment plans shown in the brochure. Please refer to the key plans for orientation. The plans are correct at the time of printing and are subject to such amendments as may be required or approved by the relevant authorities. The plans are not drawn to scale and are for the purpose of visual representation of the different available layouts. All floor areas are estimates only and are subject to final survey.

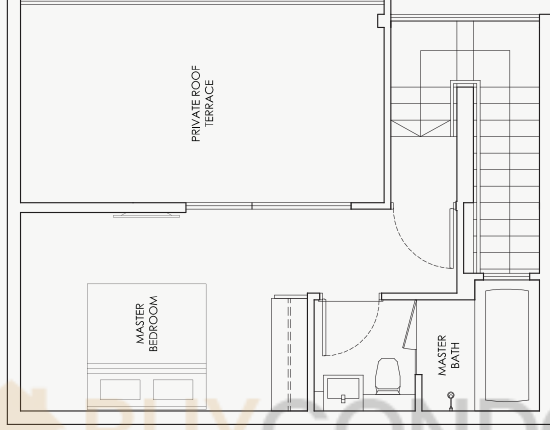
3 BEDROOM PENTHOUSE

Type PH4
118 sq m / 1270 sq ft

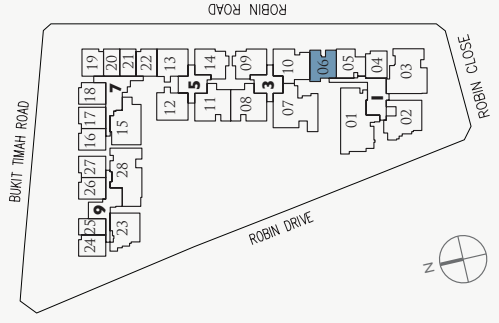
#05-06



Lower



Upper



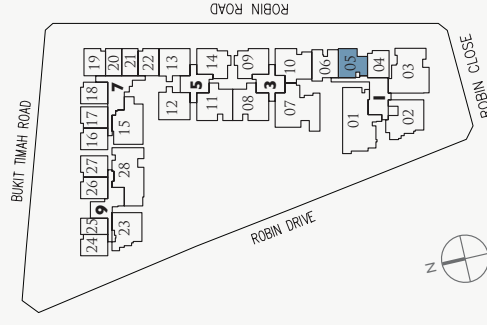
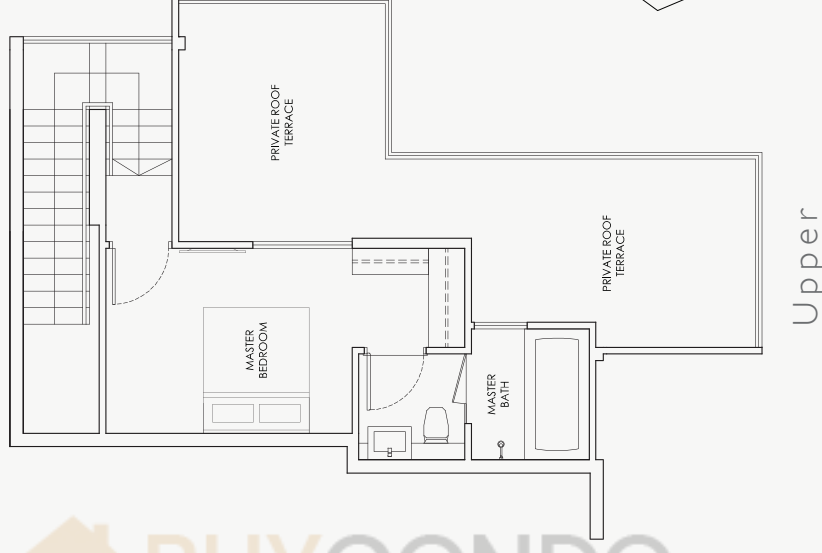
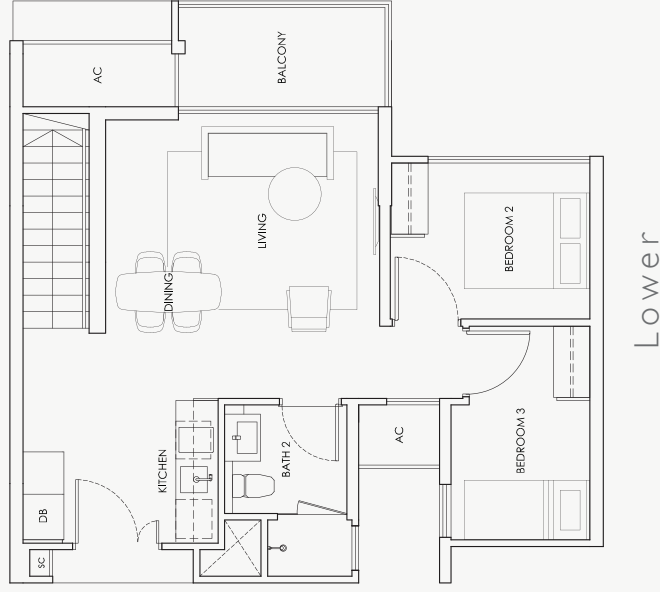
Area include A/C, ledge, balcony, PES, and roof terrace. Some units are mirror images of the apartment plans shown in the brochure. Please refer to the key plans for orientation. The plans are correct at the time of printing and are subject to such amendments as may be required or approved by the relevant authorities. The plans are not drawn to scale and are for the purpose of visual representation of the different available layouts. All floor areas are estimates only and are subject to final survey.

3 BEDROOM PENTHOUSE

Type PH5

117 sq m / 1259 sq ft

#05-05



Area include A/C ledge, balcony, PES and roof terrace. Some units are mirror images of the apartment plans shown in the brochure. Please refer to the key plans for orientation. The plans are correct at the time of printing and are subject to such amendments as may be required or approved by the relevant authorities. The plans are not drawn to scale and are for the purpose of visual representation of the different available layouts. All floor areas are estimates only and are subject to final survey.

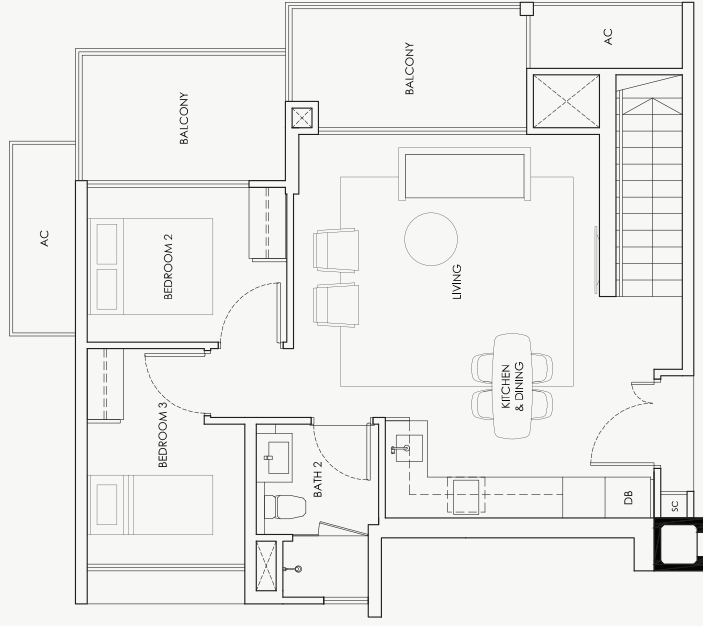
3 BEDROOM PENTHOUSE

Type PH6

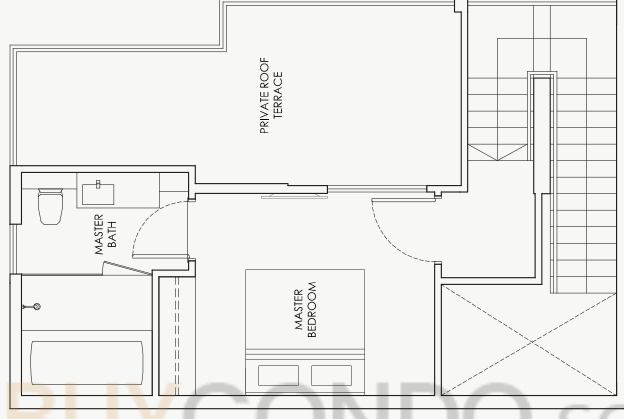
123 sq m / 1324 sq ft

#05-09

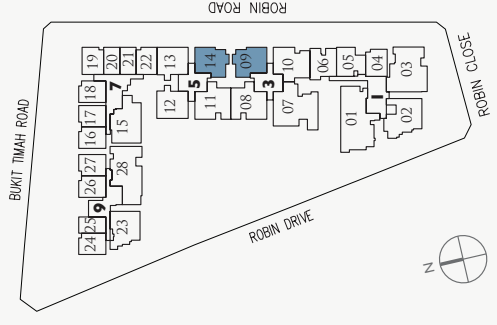
Mirror image
#05-14



Lower



Upper



Area include A/C, ledge, balcony, PES, and roof terrace. Some units are mirror images of the apartment plans shown in the brochure. Please refer to the key plans for orientation. The plans are correct at the time of printing and are subject to such amendments as may be required or approved by the relevant authorities. The plans are not drawn to scale and are for the purpose of visual representation of the different available layouts. All floor areas are estimates only and are subject to final survey.

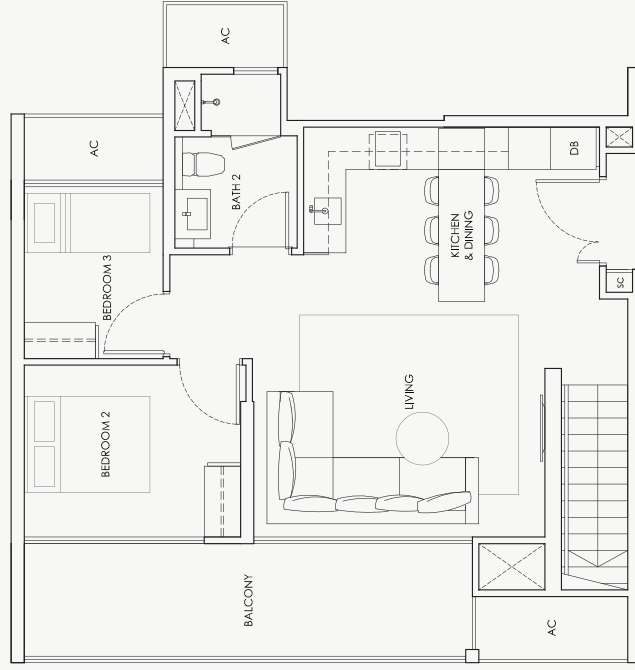
3 BEDROOM PENTHOUSE

Type PH7

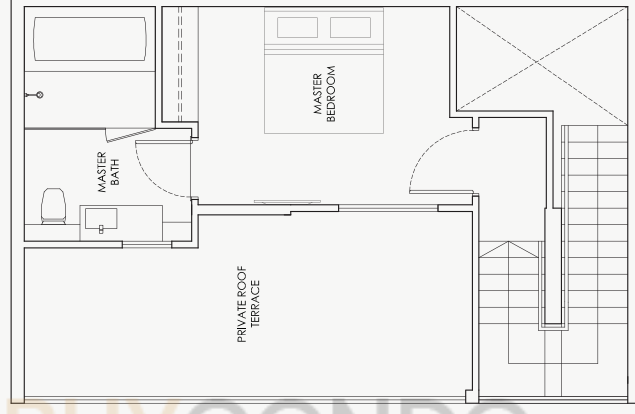
128 sq m / 1378 sq ft

#05-12

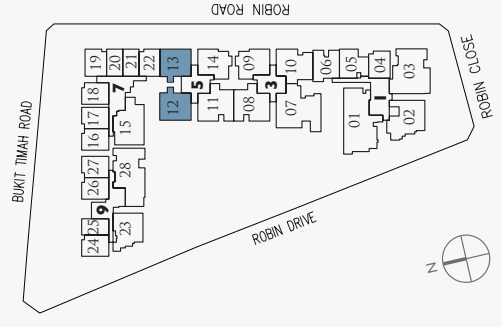
Mirror image
#05-13



Lower



Upper

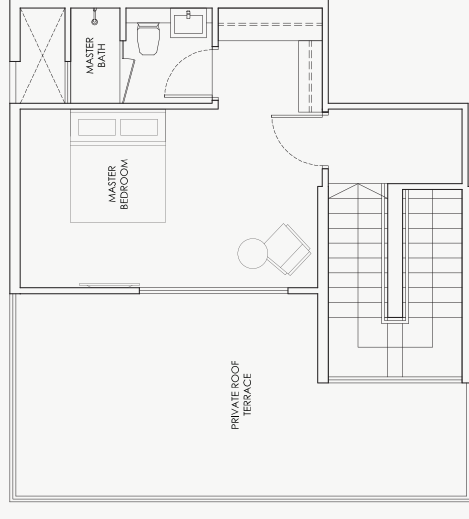
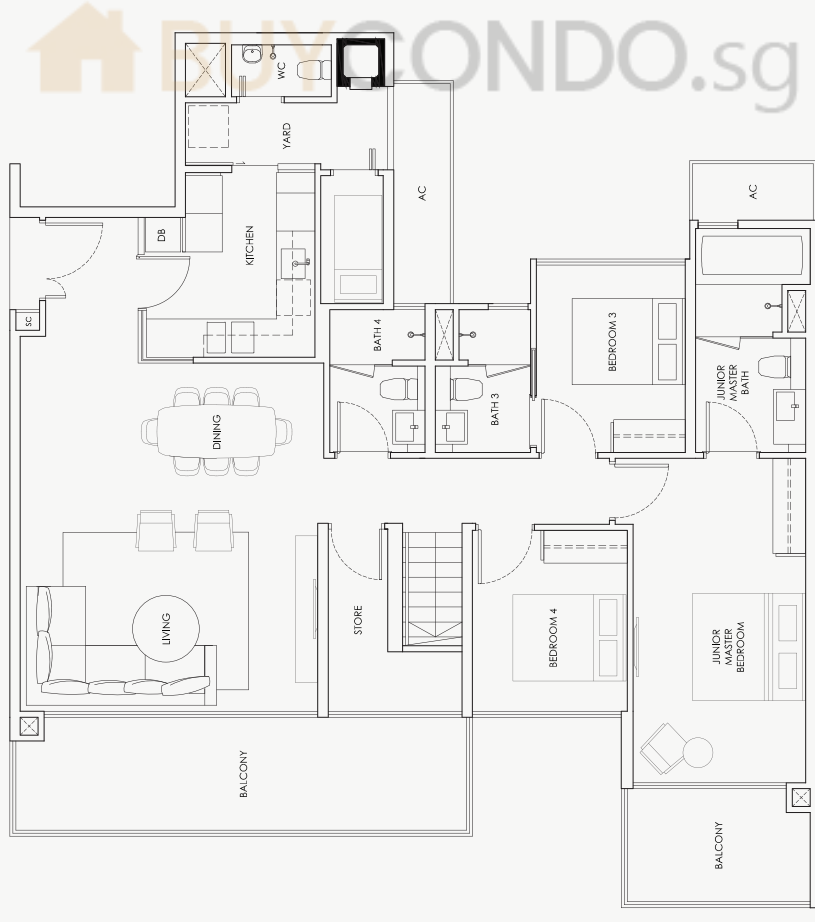


Area include A/C ledge, balcony, PES and roof terrace. Some units are mirror images of the apartment plans shown in the brochure. Please refer to the key plans for orientation. The plans are correct at the time of printing and are subject to such amendments as may be required or approved by the relevant authorities. The plans are not drawn to scale and are for the purpose of visual representation of the different available layouts. All floor areas are estimates only and are subject to final survey.

4 BEDROOM PENTHOUSE

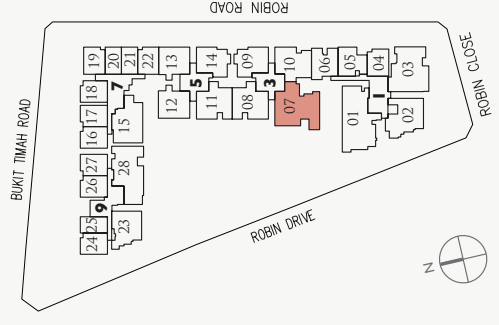
Type PH8
204 sq m / 2196 sq ft

#05-07



Upper

Lower



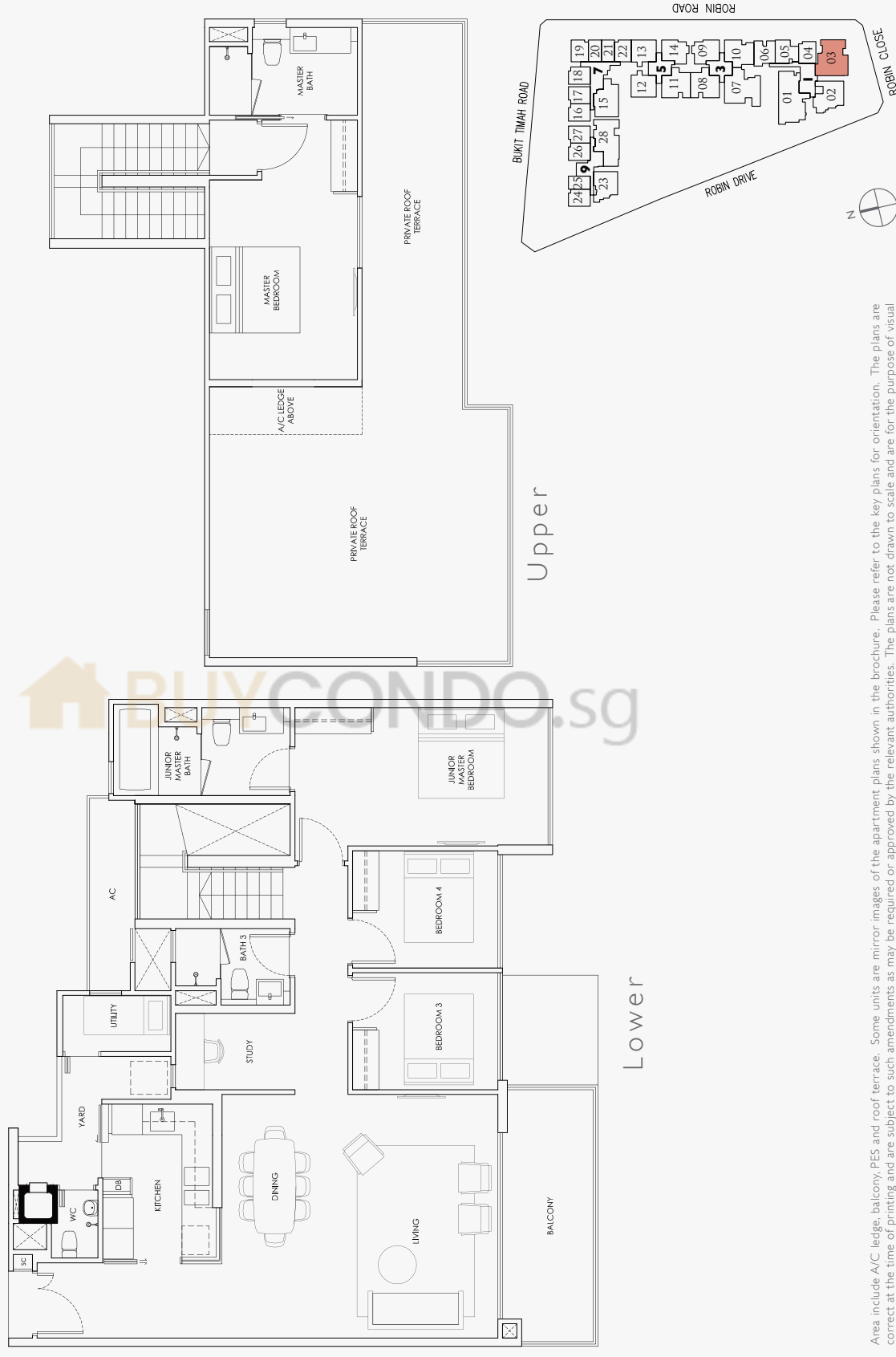
Area include A/C ledge, balcony, PES and roof terrace. Some units are mirror images of the apartment plans shown in the brochure. Please refer to the key plans for orientation. The plans are correct at the time of printing and are subject to such amendments as may be required or approved by the relevant authorities. The plans are not drawn to scale and are for the purpose of visual representation of the different available layouts. All floor areas are estimates only and are subject to final survey.

4 BEDROOM + STUDY PENTHOUSE

Type PH9

220 sq m / 2368 sq ft

#05-03



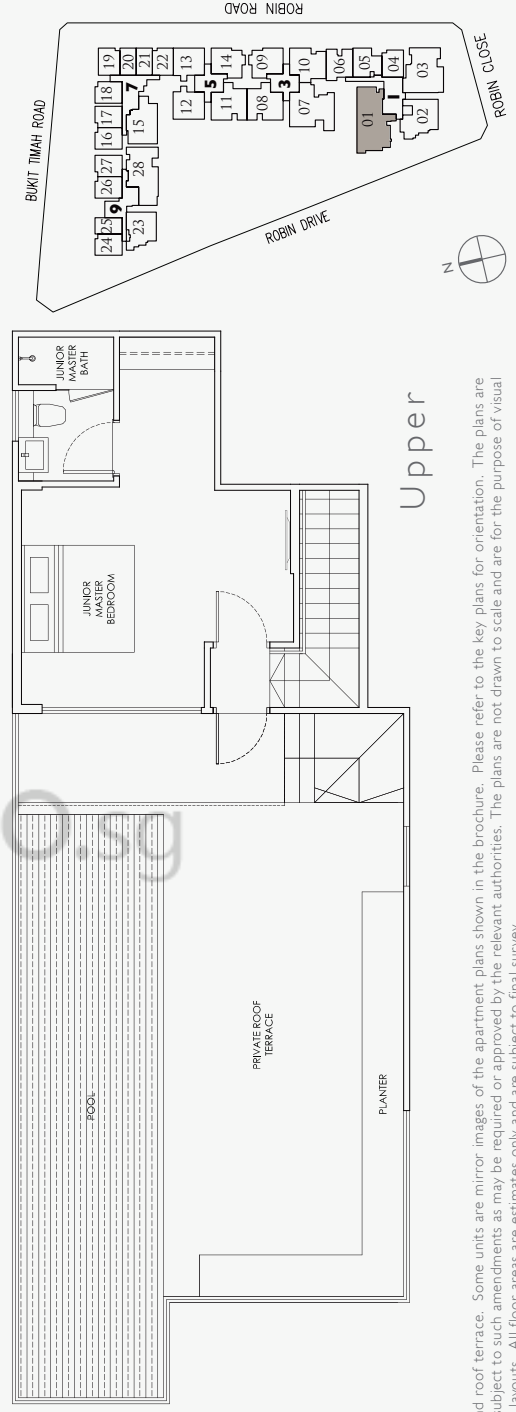
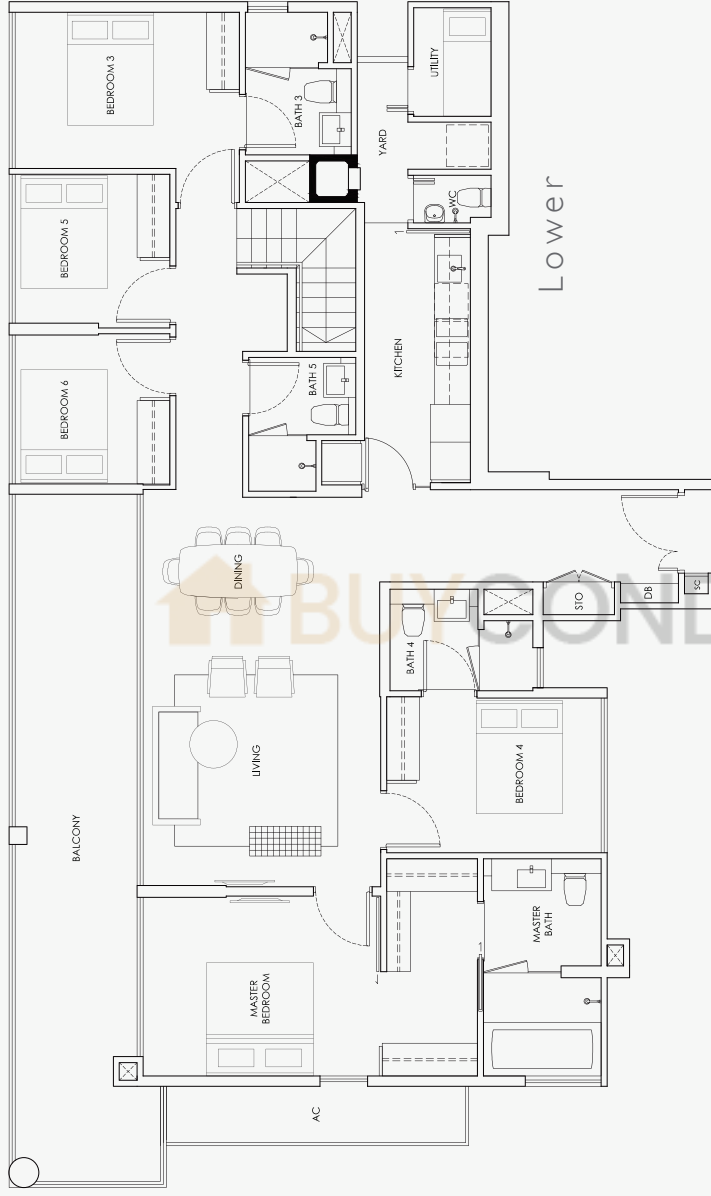
Area include A/C ledge, balcony, PES and roof terrace. Some units are mirror images of the apartment plans shown in the brochure. Please refer to the key plans for orientation. The plans are correct at the time of printing and are subject to such amendments as may be required or approved by the relevant authorities. The plans are not drawn to scale and are for the purpose of visual representation of the different available layouts. All floor areas are estimates only and are subject to final survey.

6 BEDROOM PENTHOUSE

Type PH10

273 sq m / 2939 sq ft

#05-01



Area include A/C ledge, balcony, PES and roof terrace. Some units are mirror images of the apartment plans shown in the brochure. Please refer to the key plans for orientation. The plans are correct at the time of printing and are subject to such amendments as may be required or approved by the relevant authorities. The plans are not drawn to scale and are for the purpose of visual representation of the different available layouts. All floor areas are estimates only and are subject to final survey.