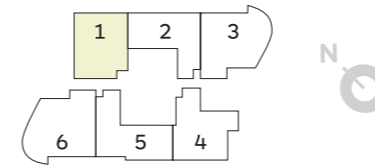
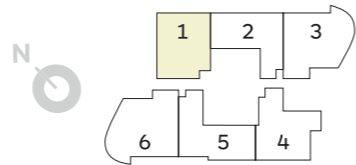


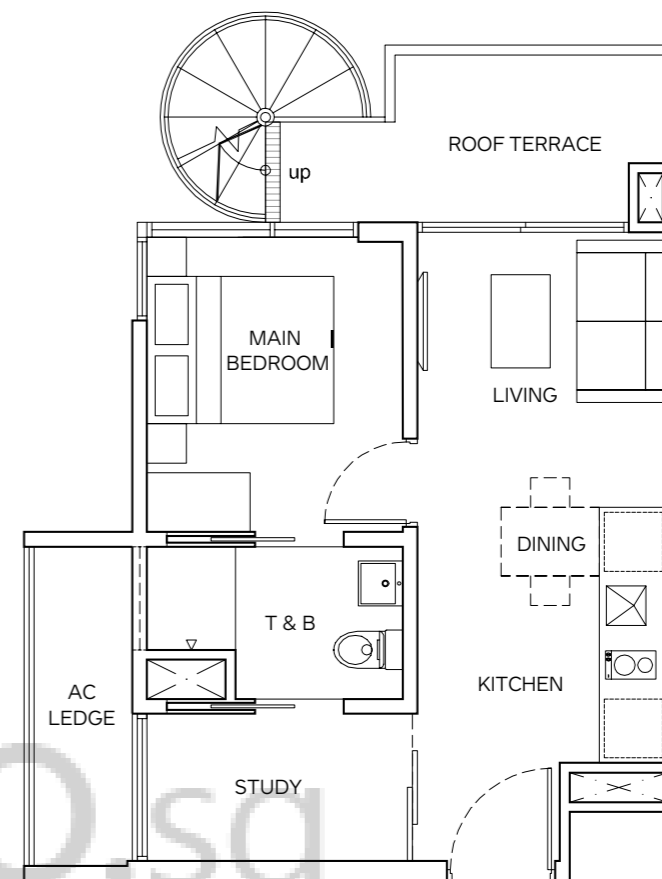
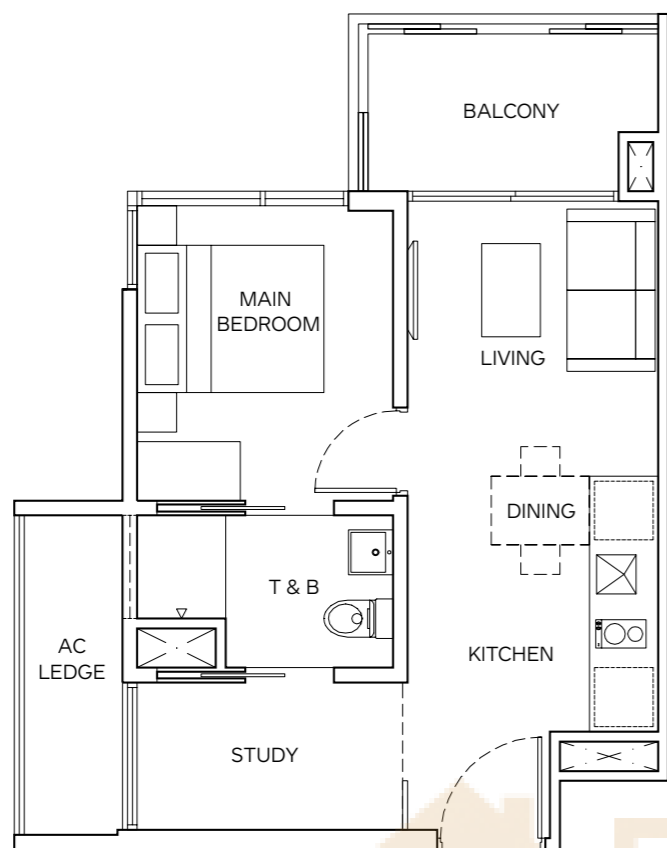
UNIT TYPE A - 1+1 BEDROOM

#06-01 to #19-01
Area 43.00 sq m / 463.00 sq ft
(Inclusive of Balcony and AC Ledge)



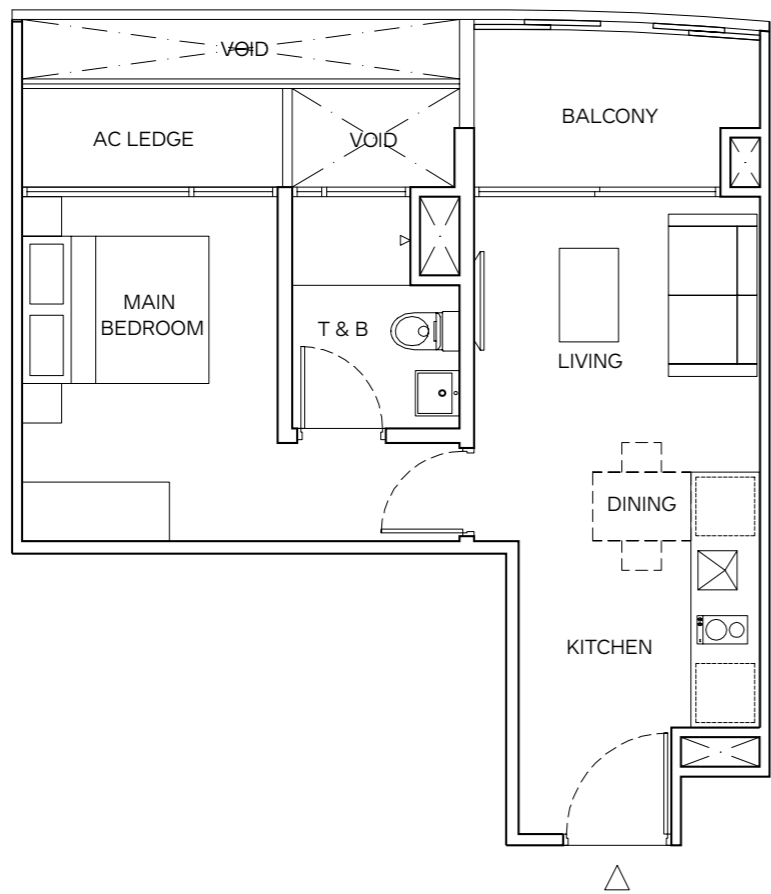
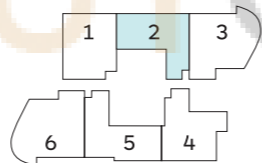
UNIT TYPE PH A - 1+1 BEDROOM

#20-01
Area 68 sq m / 732 sq ft
(Inclusive of Balcony and AC Ledge)

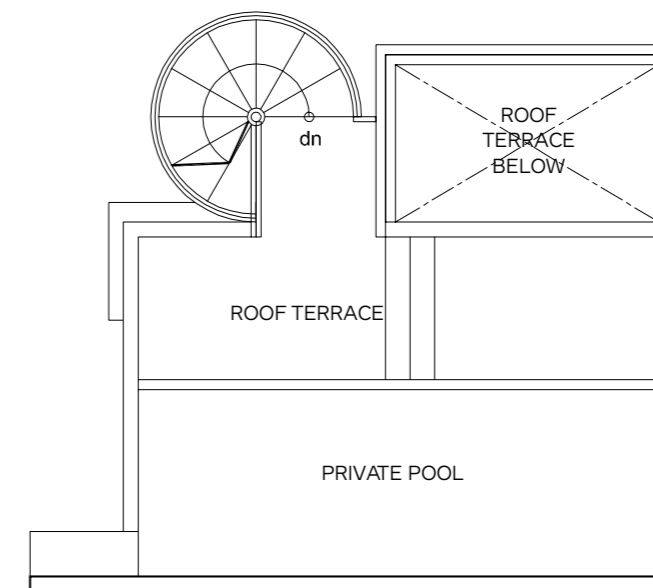


UNIT TYPE B - 1 BEDROOM

#06-02 to #19-02
Area 43.00 sq m / 463.00 sq ft
(Inclusive of Balcony and AC Ledge)



LOWER STOREY

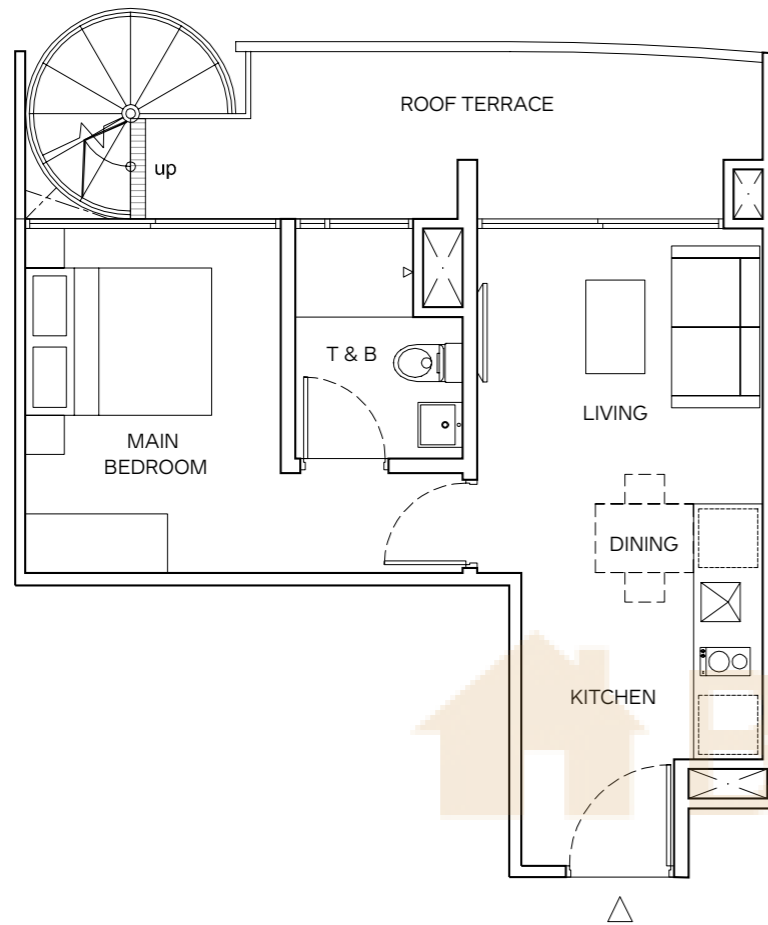
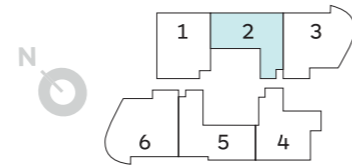


UPPER STOREY

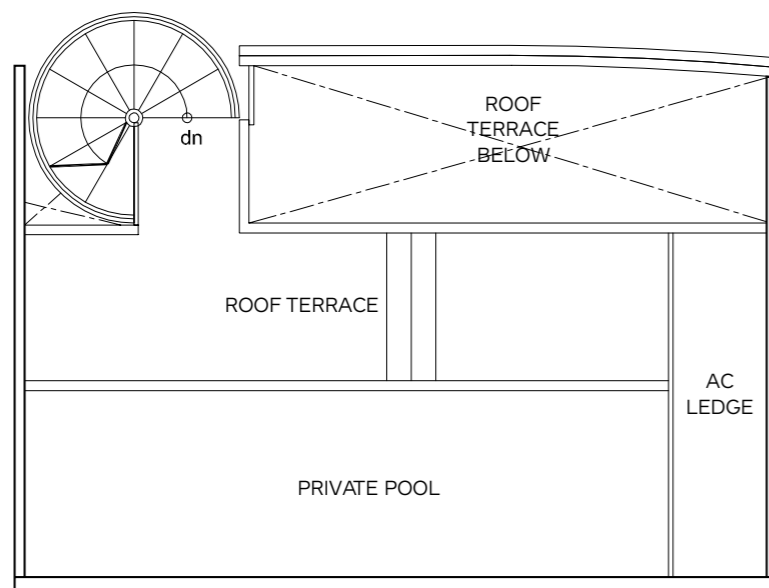
UNIT TYPE PH B - 1 BEDROOM

#20-02

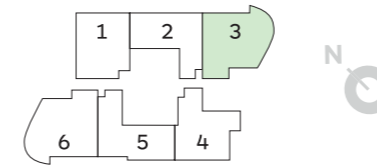
Area 77 sq m / 829 sq ft
(Inclusive of Balcony and AC Ledge)



LOWER STOREY



UPPER STOREY

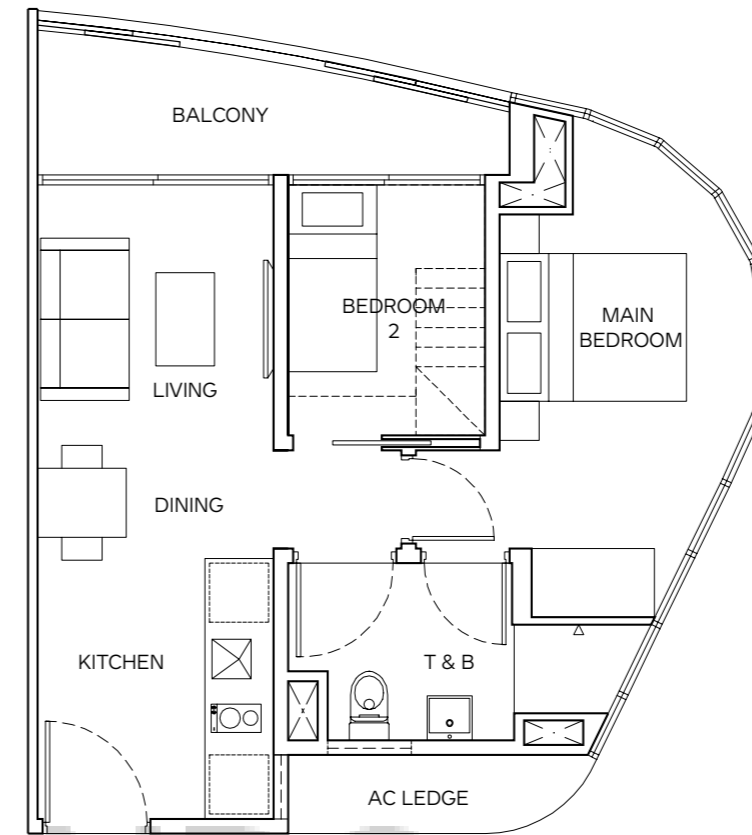


UNIT TYPE C - 2 BEDROOM

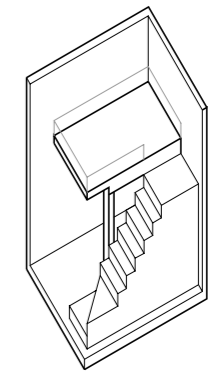
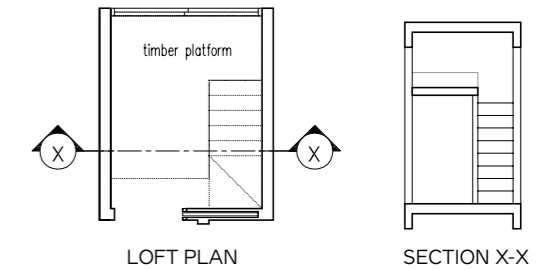
#06-03 to #12-03

#15-03 to #19-03

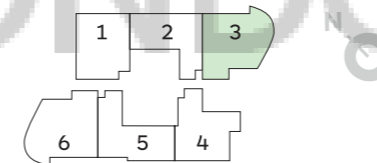
Area 50 sq m / 538 sq ft
(Inclusive of Balcony and AC Ledge)



LOFT OPTION FOR BEDROOM 2



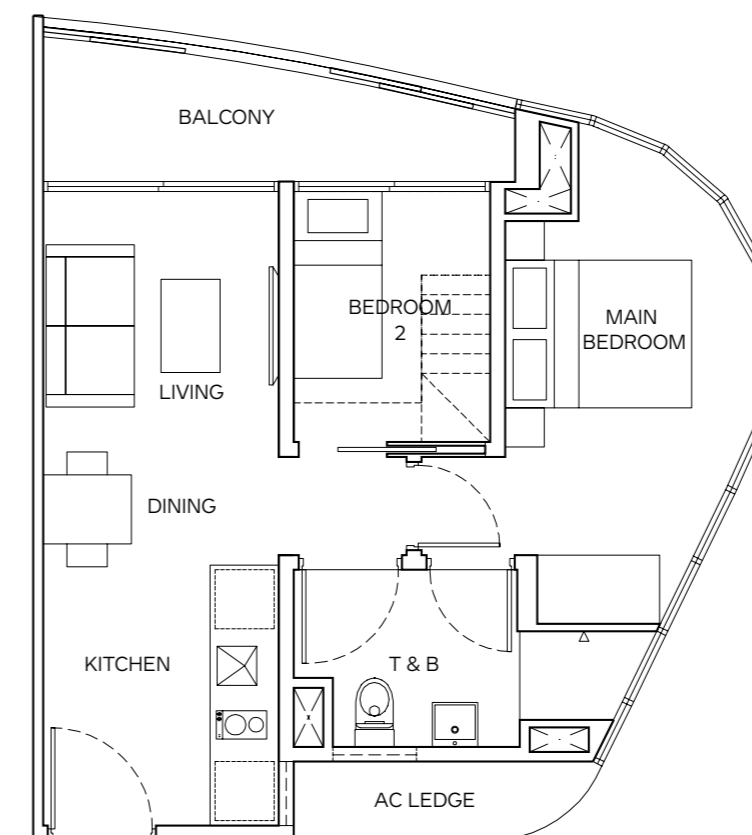
Floor to floor height: 3600mm



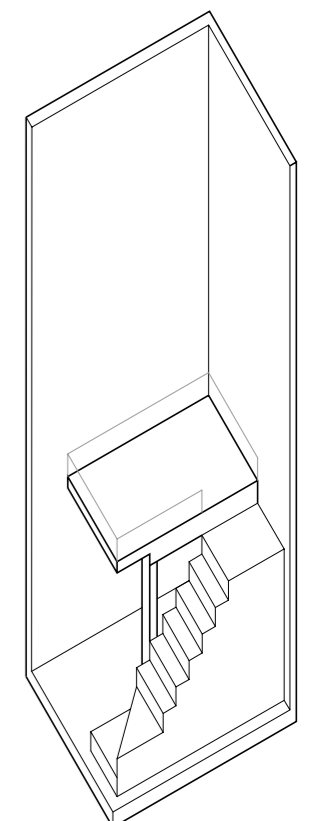
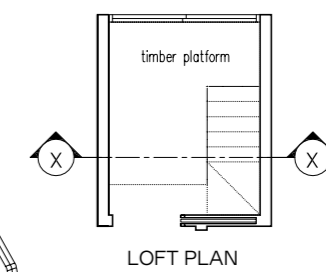
UNIT TYPE C2 - 2 BEDROOM

#13-03

Area 92 sq m / 990 sq ft
(Inclusive of Balcony and AC Ledge)



LOFT OPTION FOR BEDROOM 2

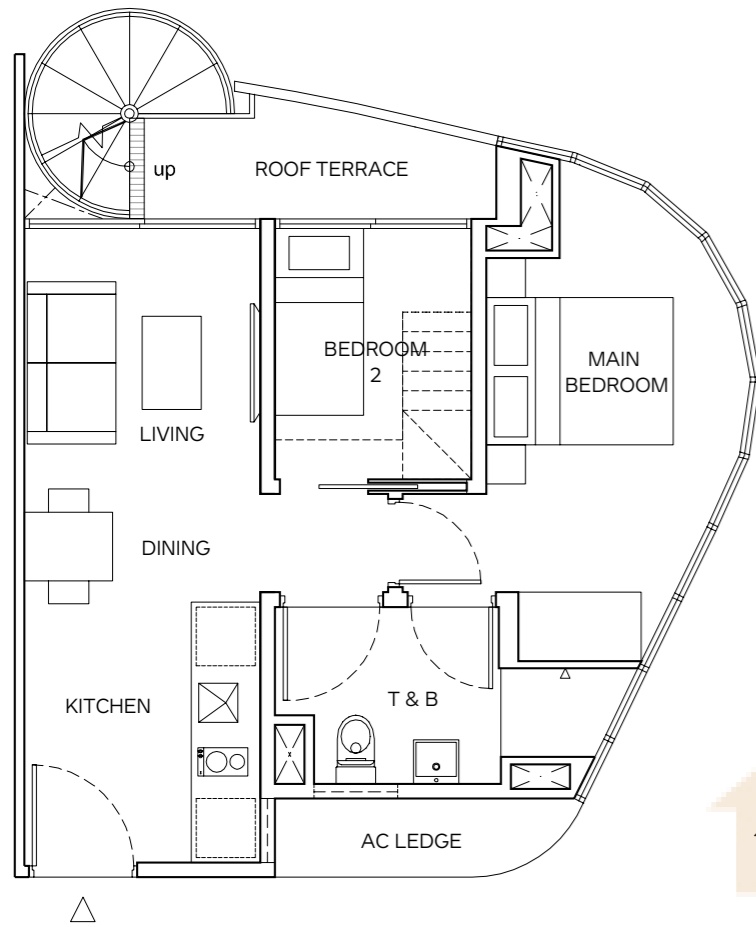
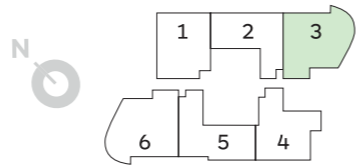


SECTION X-X

Floor to floor height: 7200mm

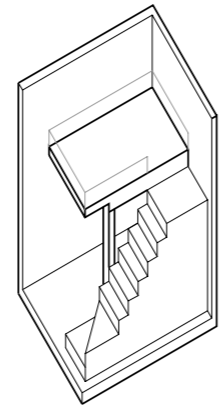
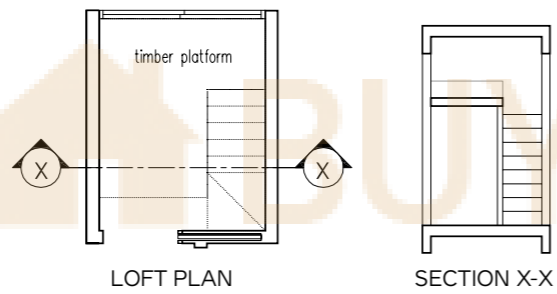
UNIT TYPE PH C - 2 BEDROOM

#20-03
 Area 88 sq m / 947 sq ft
 (Inclusive of Balcony and AC Ledge)

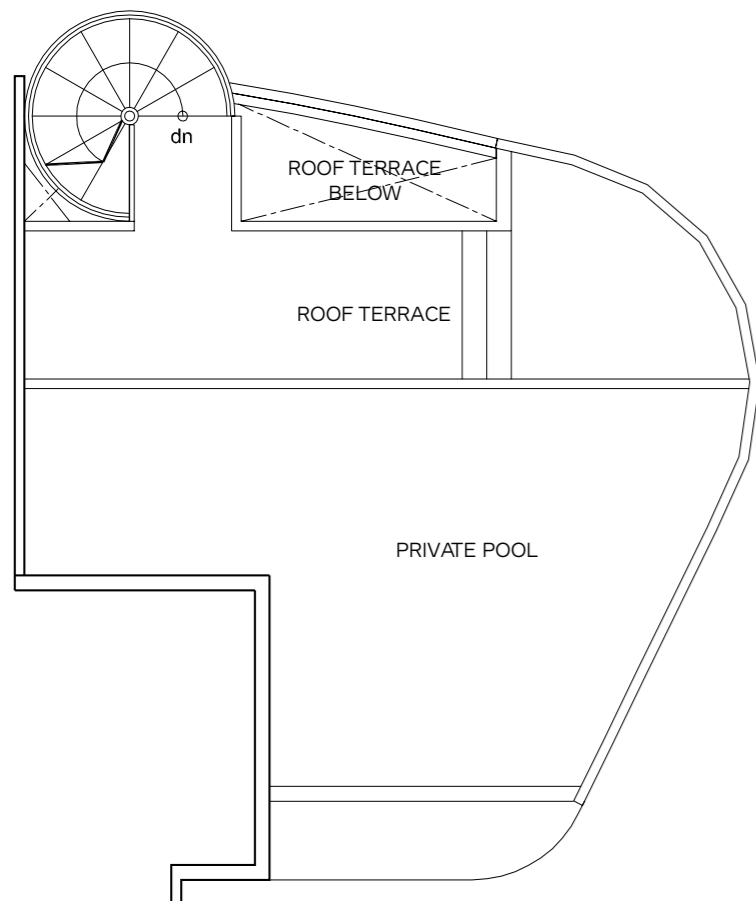


LOWER STOREY

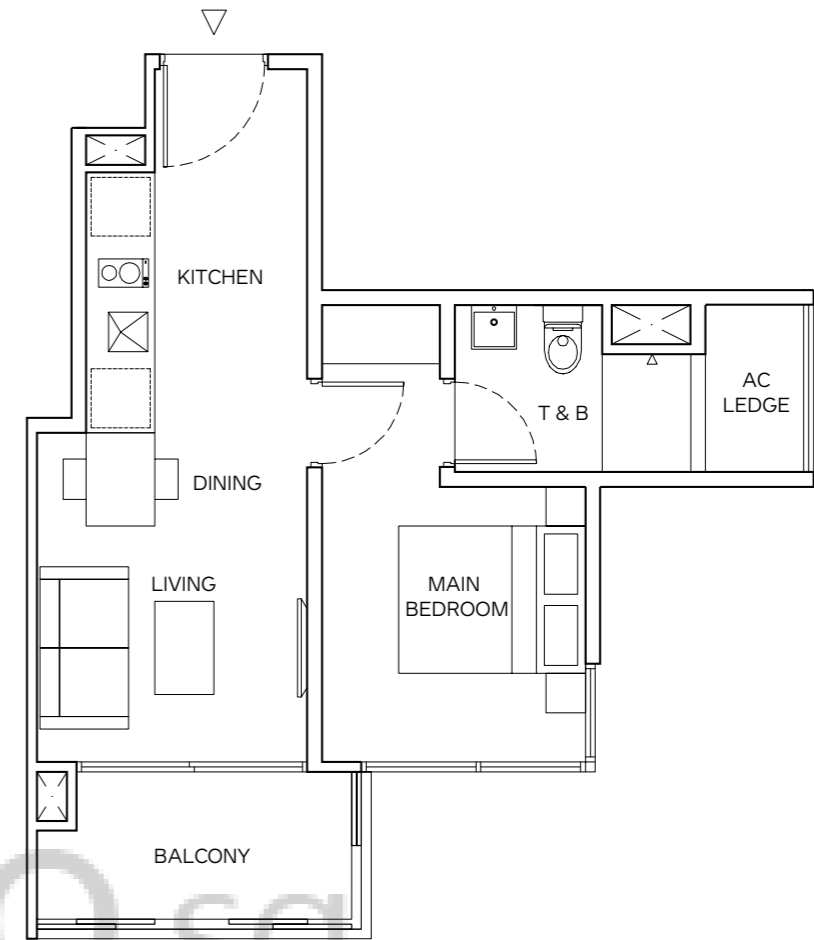
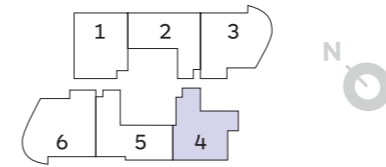
LOFT OPTION FOR BEDROOM 2



ISOMETRIC VIEW
 Floor Height: 3600mm

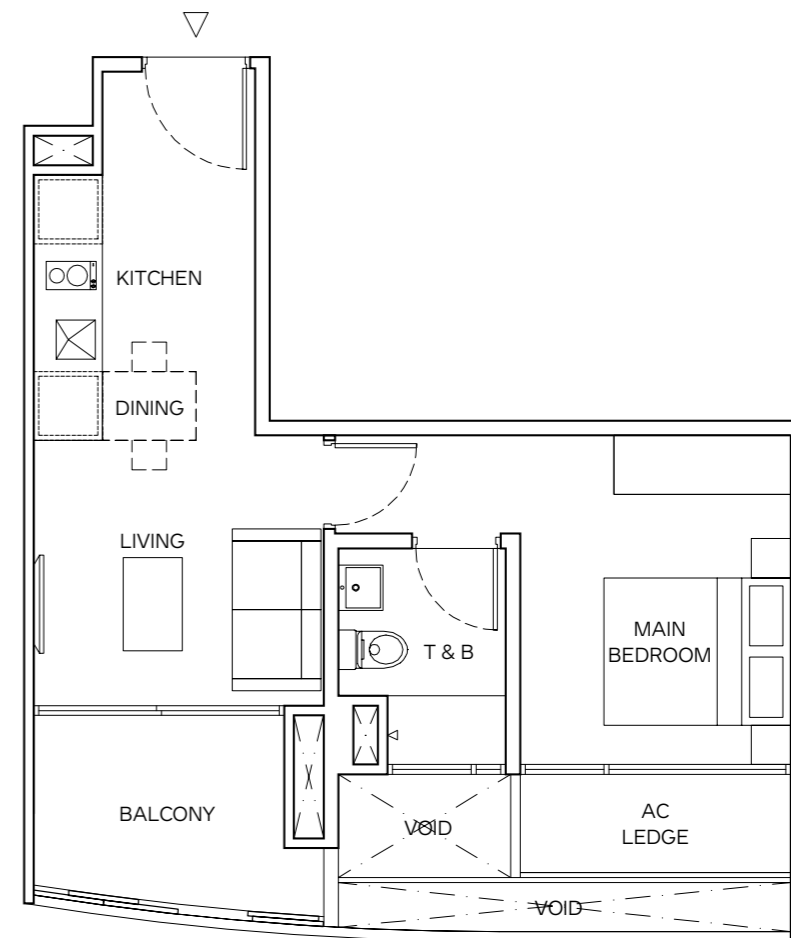
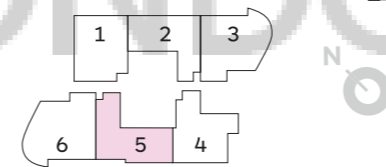


UPPER STOREY



UNIT TYPE D - 1 BEDROOM

#06-04 to #19-04
 Area 41 sq m / 441 sq ft
 (Inclusive of Balcony and AC Ledge)



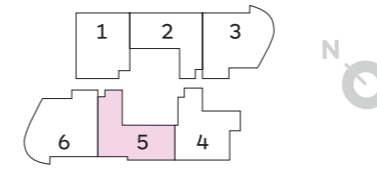
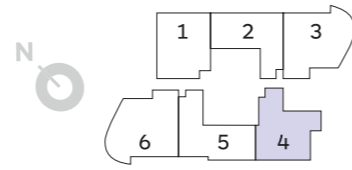
UNIT TYPE E - 1 BEDROOM

#06-05 to #19-05
 Area 43 sq m / 463 sq ft
 (Inclusive of Balcony and AC Ledge)

UNIT TYPE PH D - 1 BEDROOM

#20-04

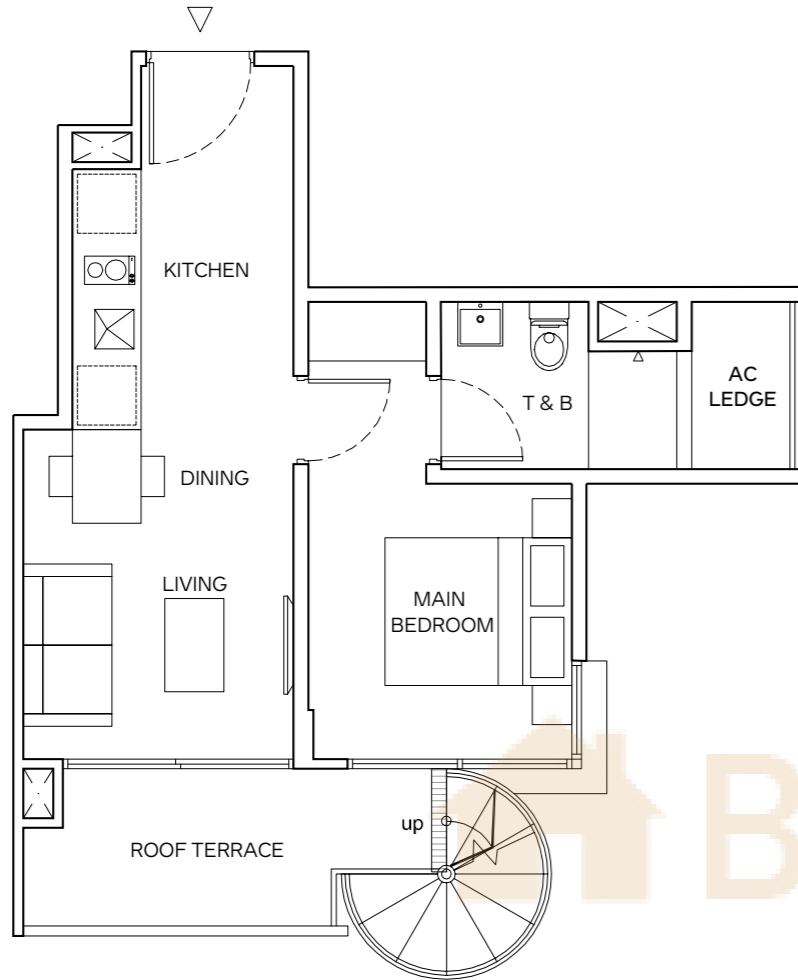
Area 74 sq m / 796 sq ft
(Inclusive of Balcony and AC Ledge)



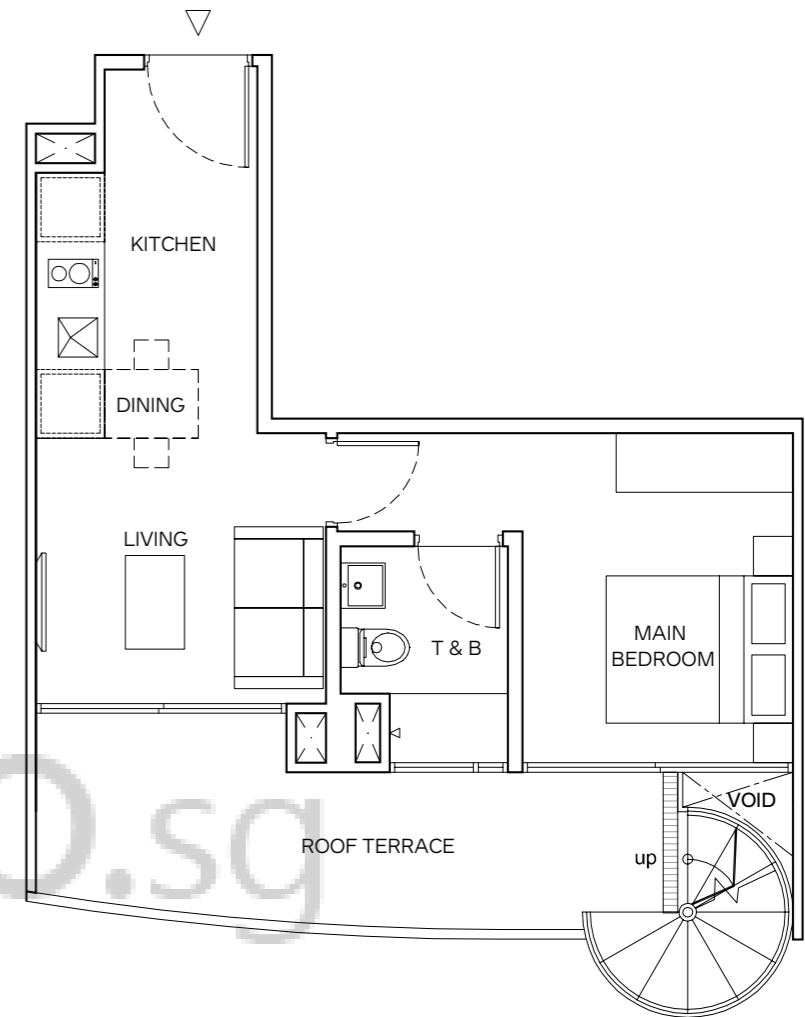
UNIT TYPE PH E - 1 BEDROOM

#20-05

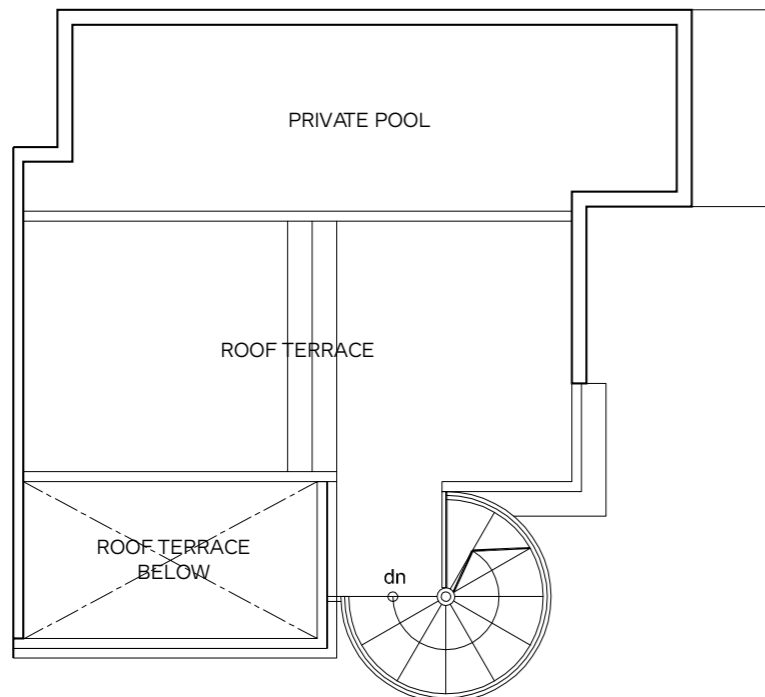
Area 80 sq m / 861 sq ft
(Inclusive of Balcony and AC Ledge)



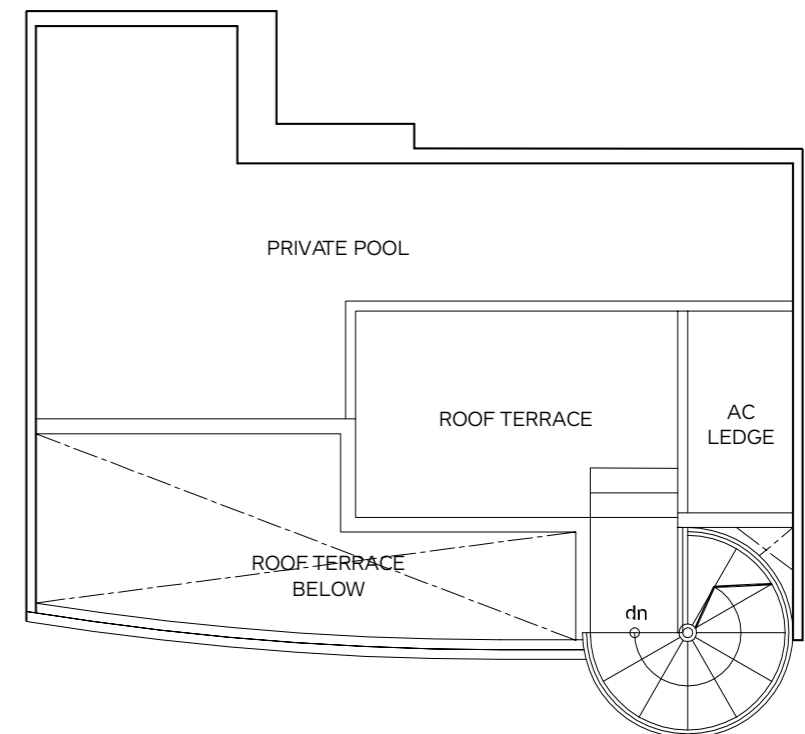
LOWER STOREY



LOWER STOREY

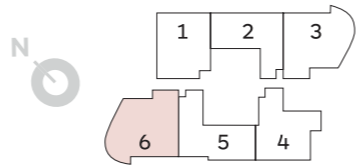


UPPER STOREY

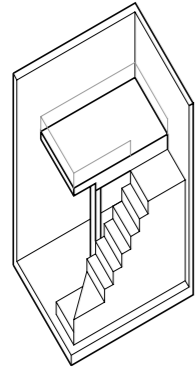
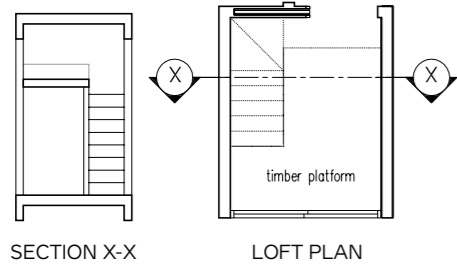


UPPER STOREY

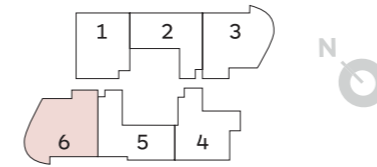
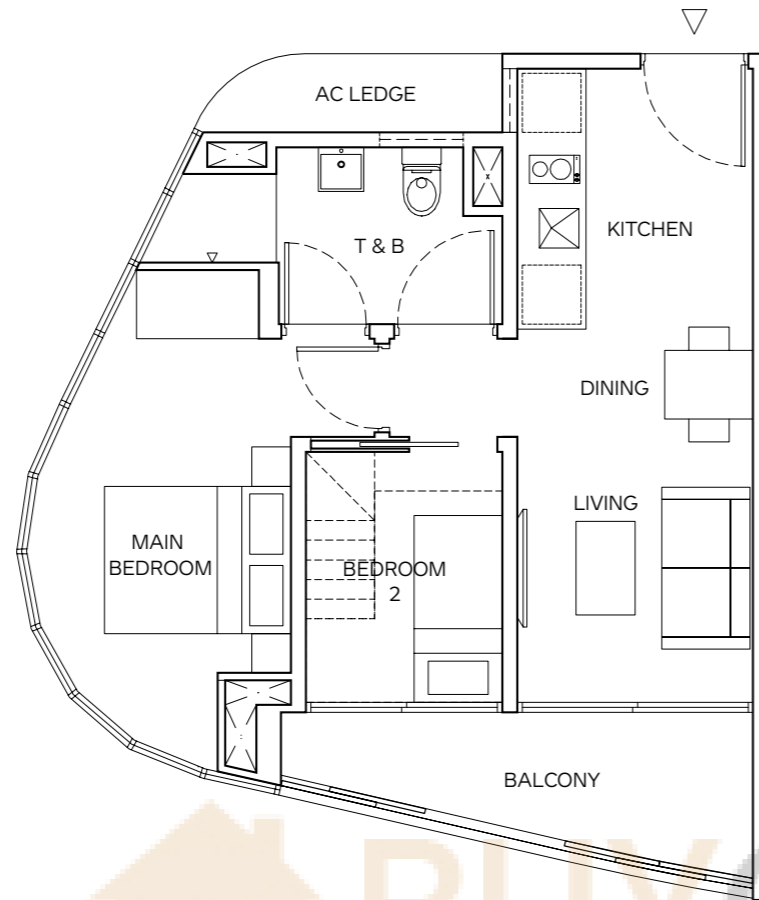
UNIT TYPE F - 2 BEDROOM
 #06-06 to #12-06
 #15-06 to #19-06
 Area 51 sq m / 549 sq ft
 (Inclusive of Balcony and AC Ledge)



LOFT OPTION FOR BEDROOM 2

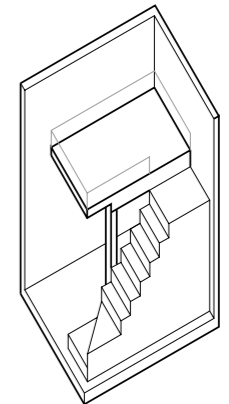


ISOMETRIC VIEW
 Floor Height: 3600mm

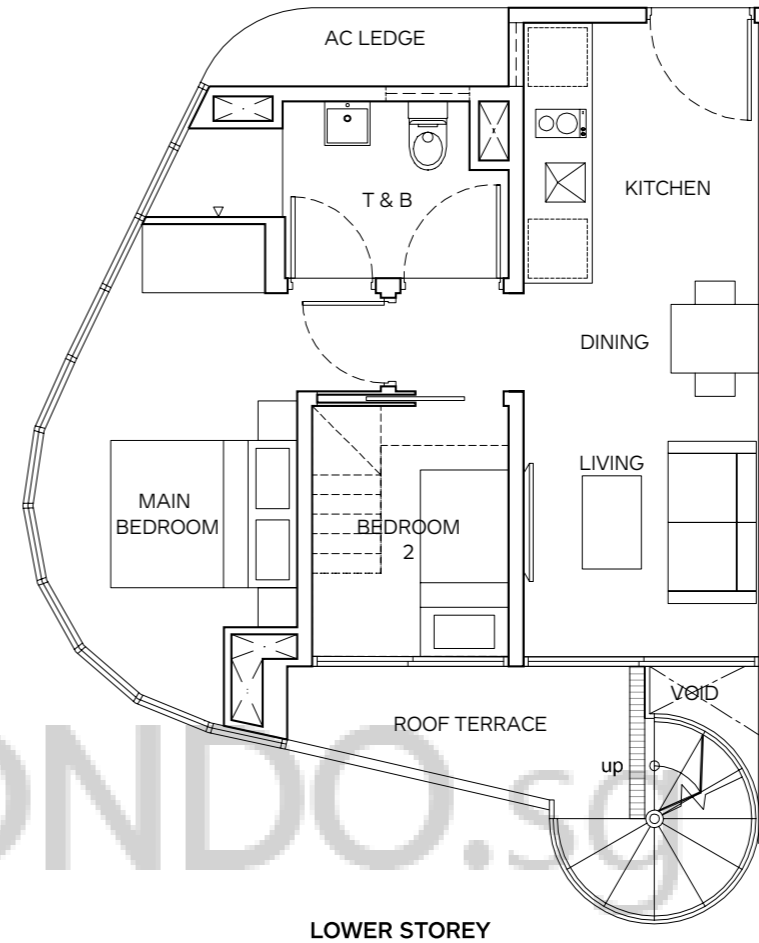


UNIT TYPE PH F - 2 BEDROOM
 #20-06
 Area 89 sq m / 958 sq ft
 (Inclusive of Balcony and AC Ledge)

LOFT OPTION FOR BEDROOM 2

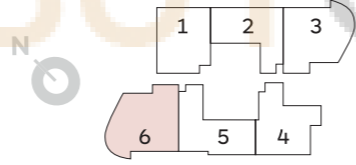


ISOMETRIC VIEW
 Floor Height: 3600mm

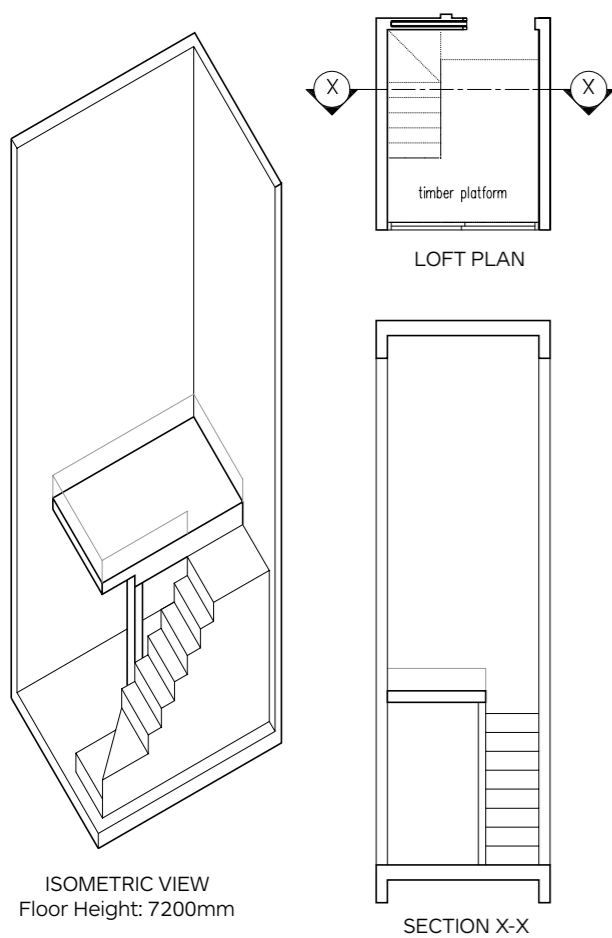


LOWER STOREY

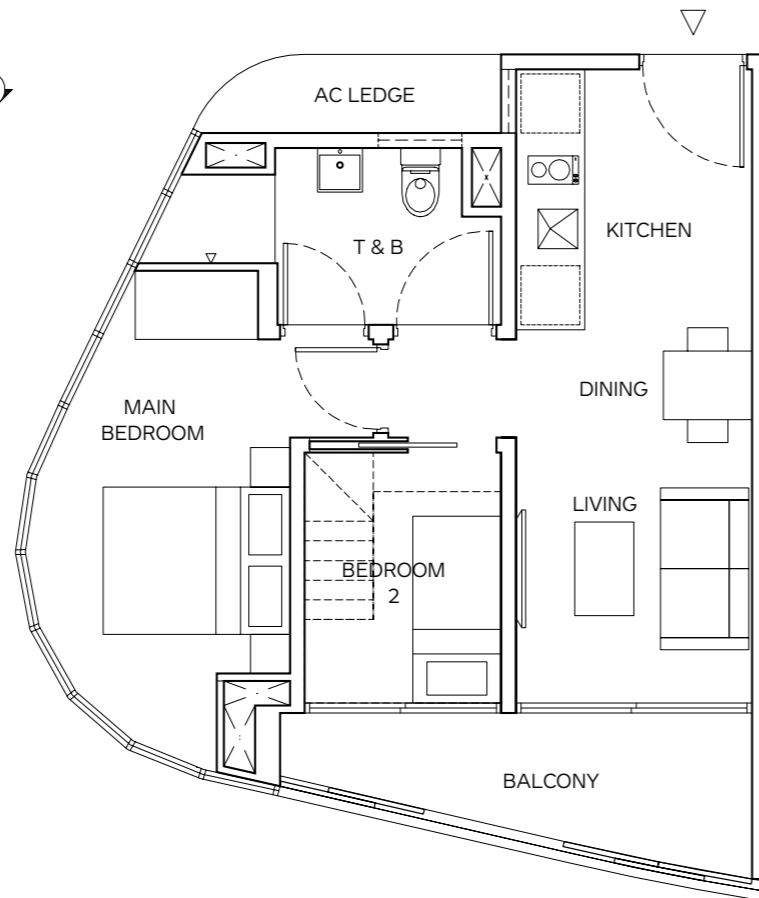
UNIT TYPE F2 - 2 BEDROOM
 #13-06
 Area 93 sq m / 1001 sq ft
 (Inclusive of Balcony and AC Ledge)



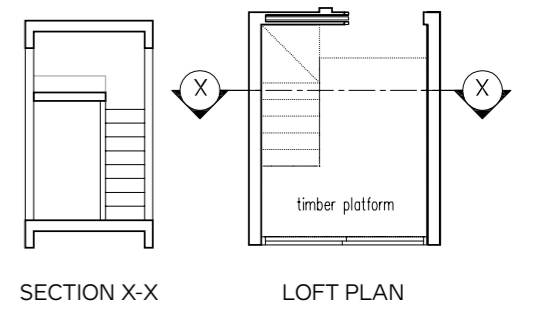
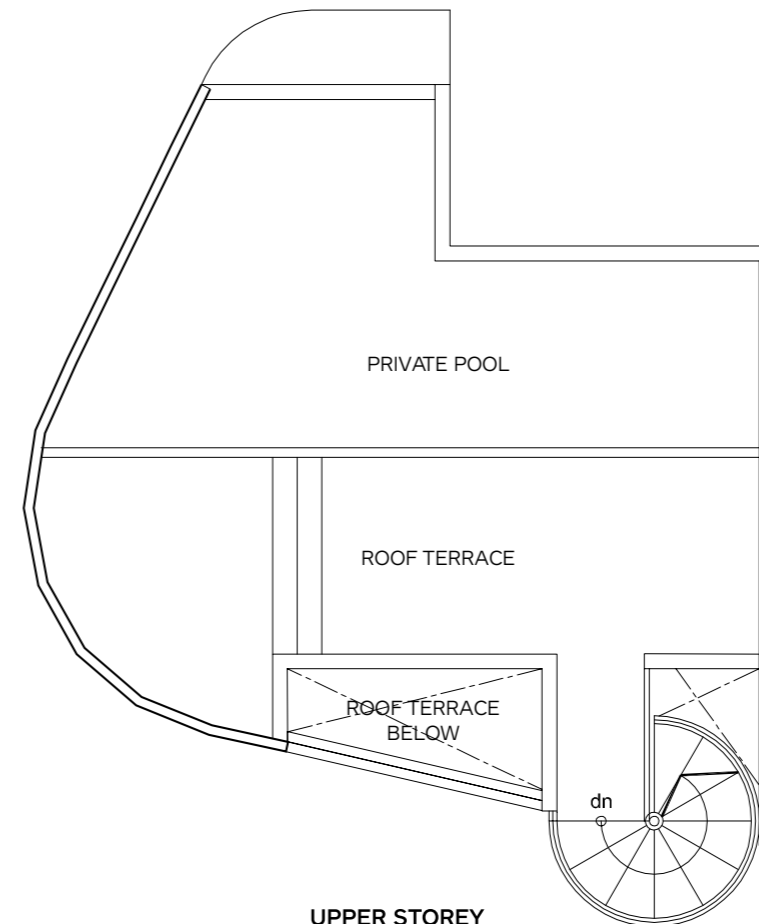
LOFT OPTION FOR BEDROOM 2



ISOMETRIC VIEW
 Floor Height: 7200mm



UPPER STOREY



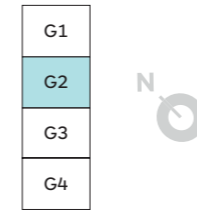
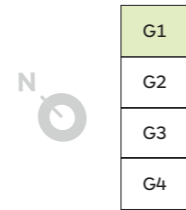
SECTION X-X

LOFT PLAN

TERRACE APARTMENT G1 - 2 BEDROOM

#05-01

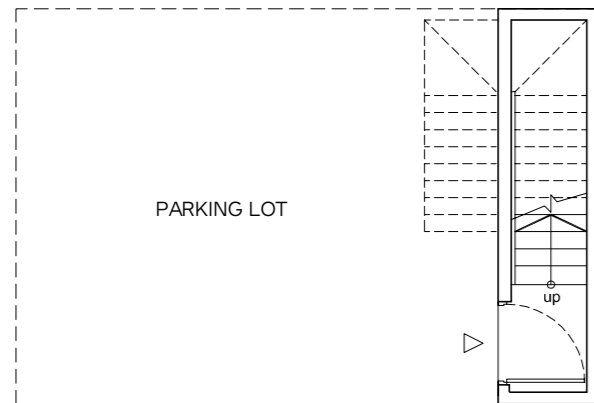
Area 160sq m / 1722 sq ft
(Inclusive of Balcony and AC Ledge)



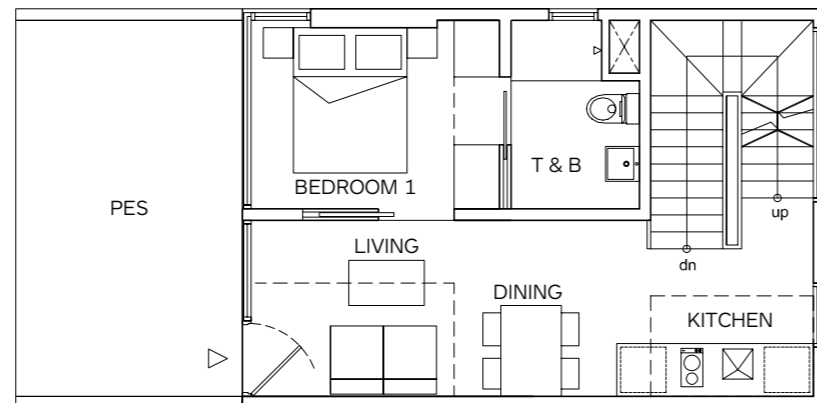
TERRACE APARTMENT G2 - 2 BEDROOM

#05-02

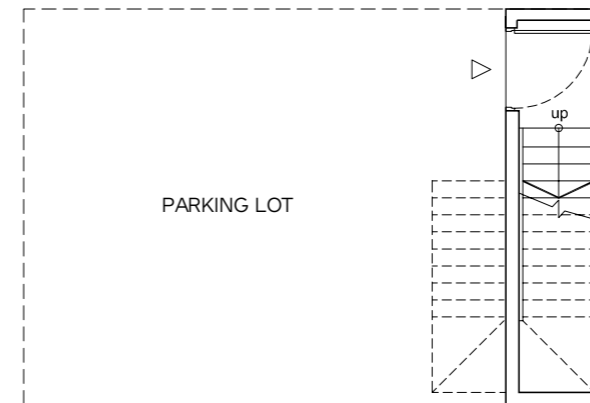
Area 160 sq m / 1722 sq ft
(Inclusive of Balcony and AC Ledge)



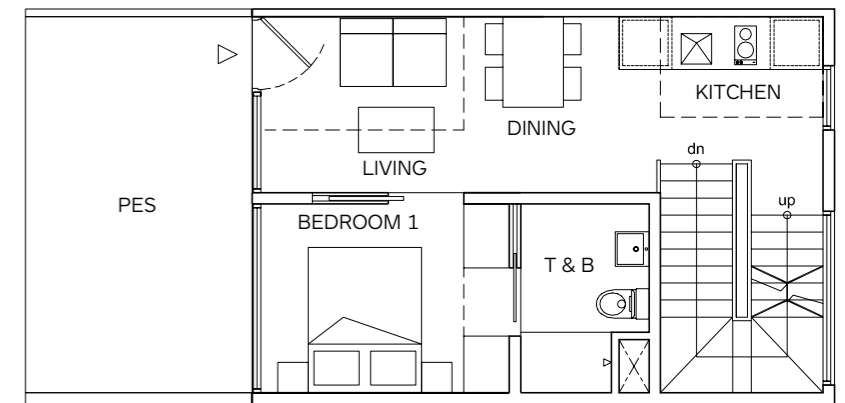
1ST STOREY



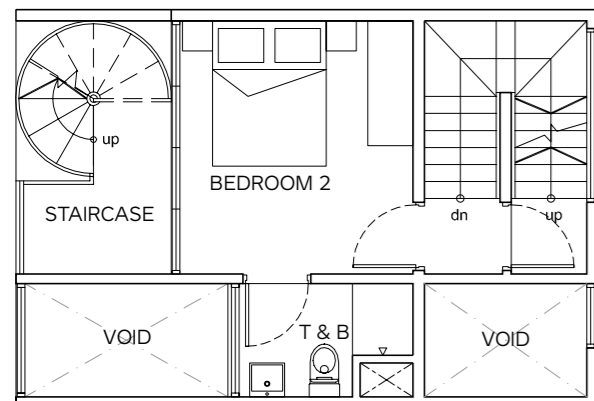
2ND STOREY



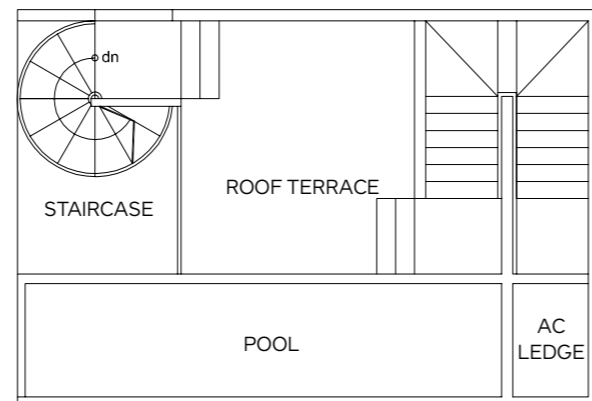
1ST STOREY



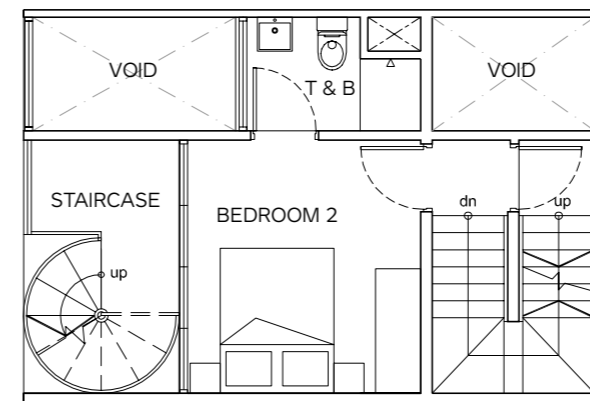
2ND STOREY



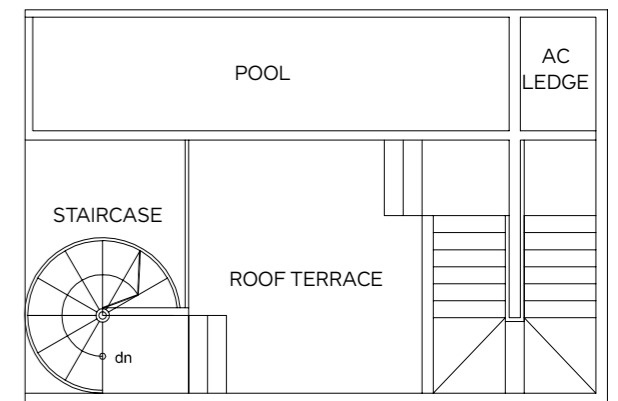
3RD STOREY



ROOF TERRACE



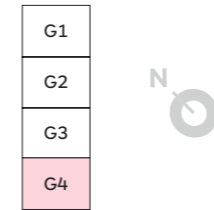
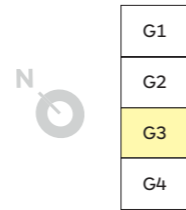
3RD STOREY



ROOF TERRACE

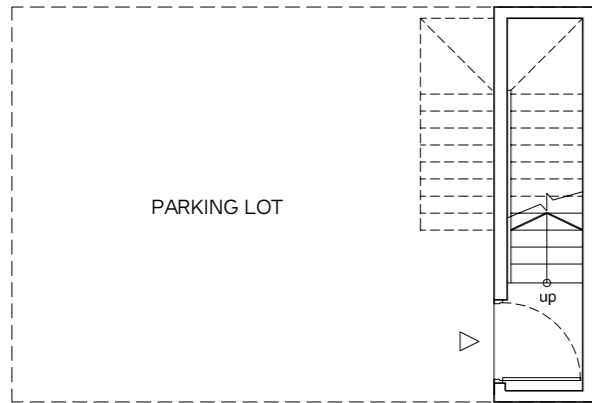
TERRACE APARTMENT G3 - 2 BEDROOM

#05-03
Area 160 sq m / 1722 sq ft
(Inclusive of Balcony and AC Ledge)

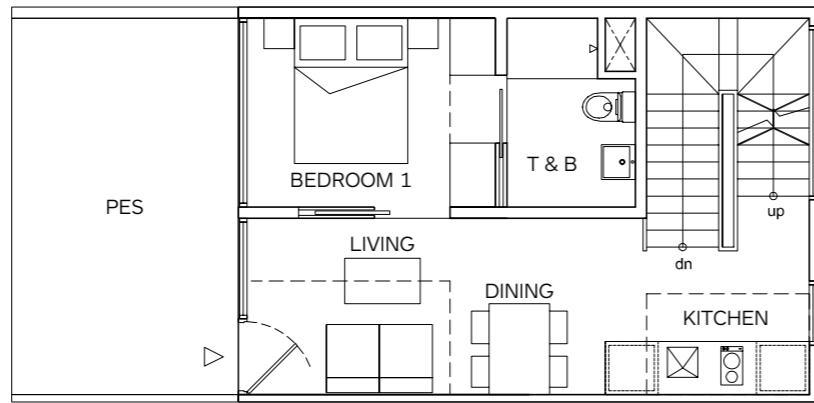


TERRACE APARTMENT G4 - 2 BEDROOM

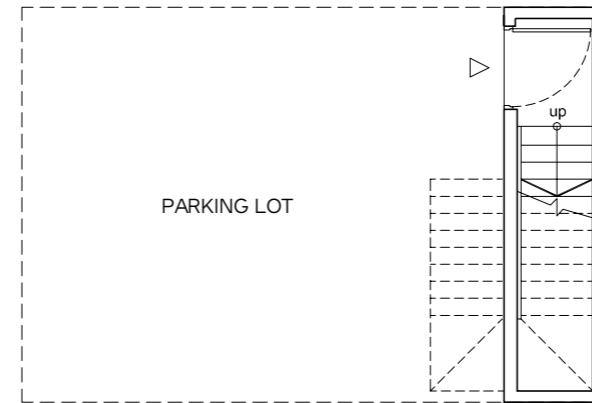
#05-04
Area 160 sq m / 1722 sq ft
(Inclusive of Balcony and AC Ledge)



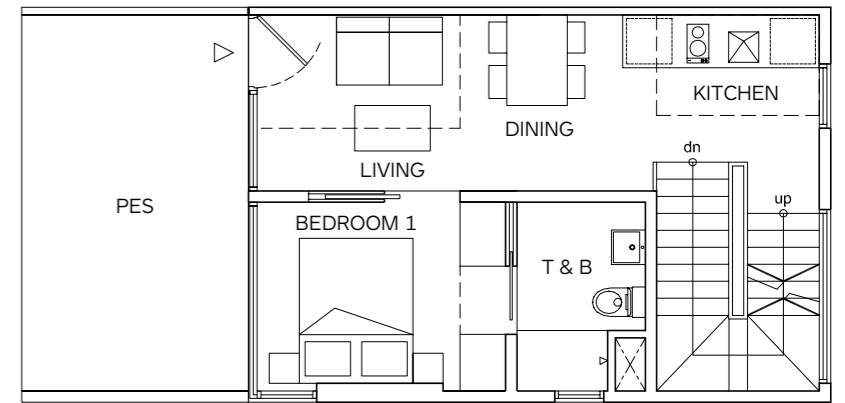
1ST STOREY



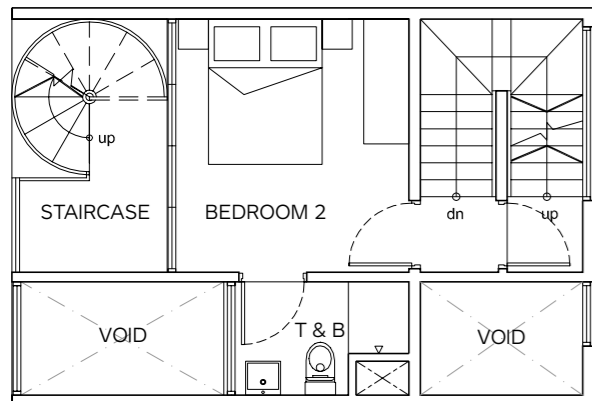
2ND STOREY



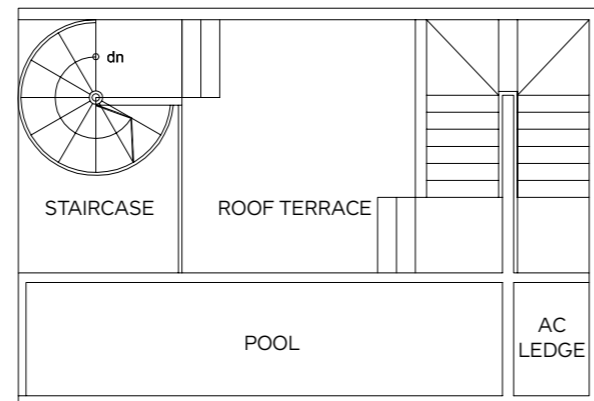
1ST STOREY



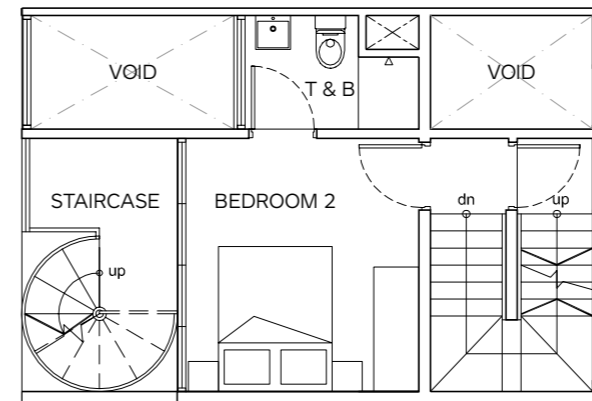
2ND STOREY



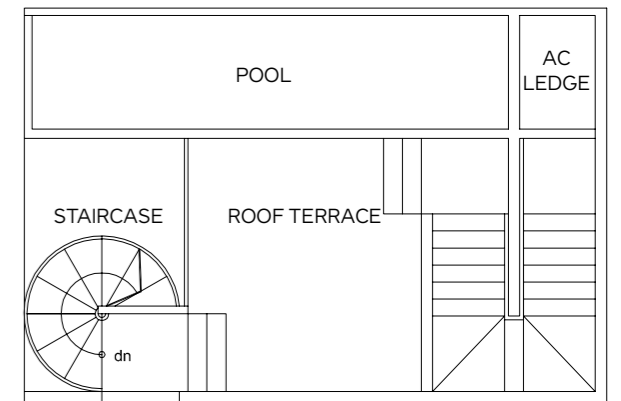
3RD STOREY



ROOF TERRACE



3RD STOREY



ROOF TERRACE