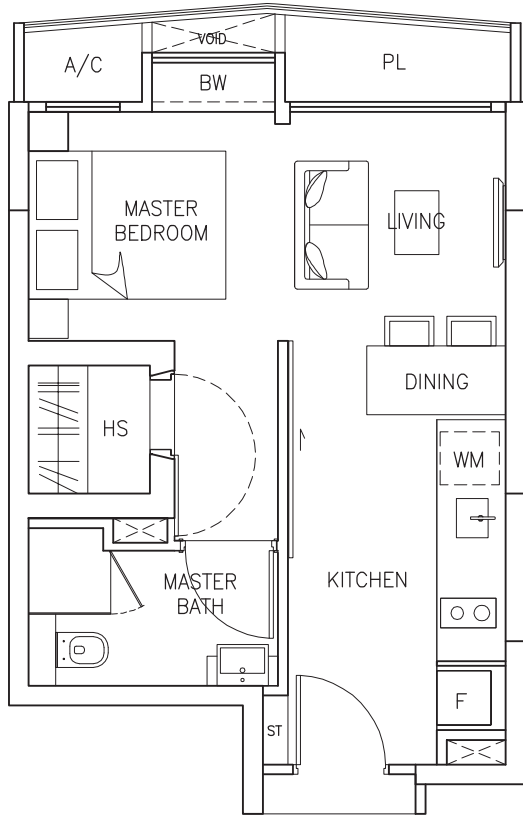
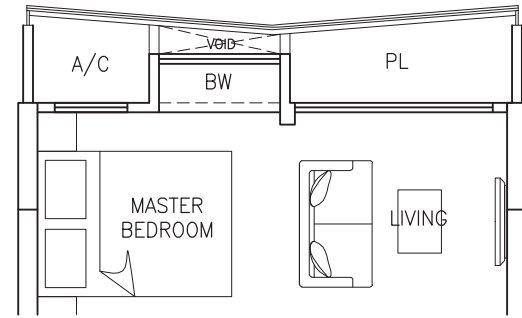


Type A1



1-Bedroom
36 sqm / 387 sqft

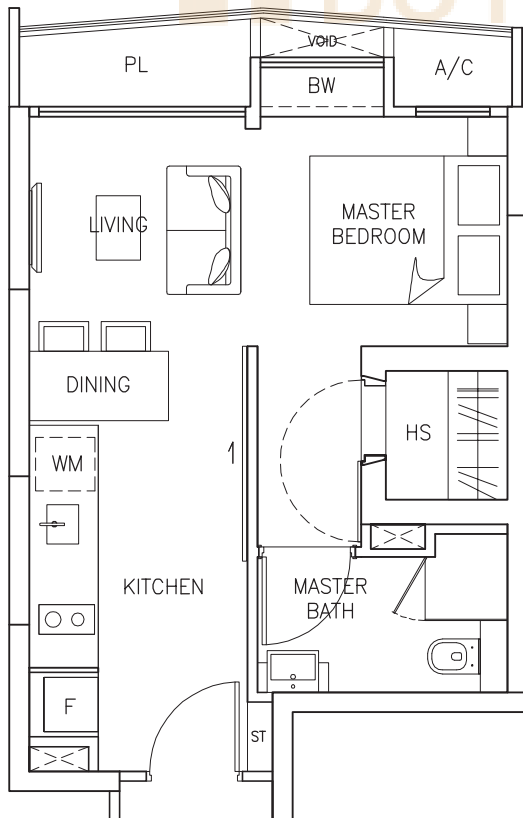
#09-04, #11-04, #13-04
#15-04, #17-04, #19-04
#21-04, #23-04



Type A1a (Partial Plan)

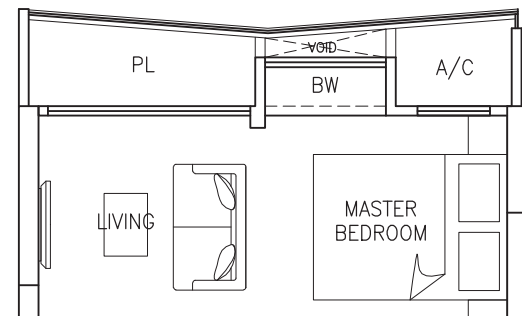
#10-04, #12-04, #14-04
#16-04, #18-04, #20-04
#22-04, #24-04

Type A2



1-Bedroom
36 sqm / 387 sqft

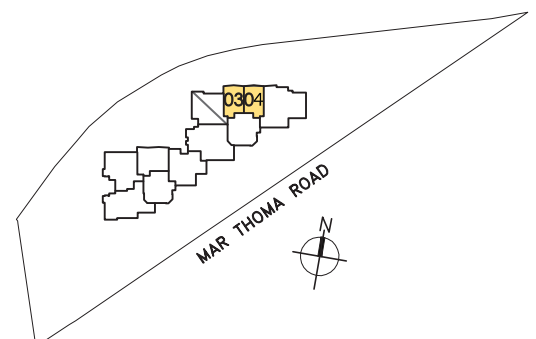
#09-03, #11-03, #13-03
#15-03, #17-03, #19-03
#21-03, #23-03



Type A2a (Partial Plan)

#10-03, #12-03, #14-03
#16-03, #18-03, #20-03
#22-03, #24-03

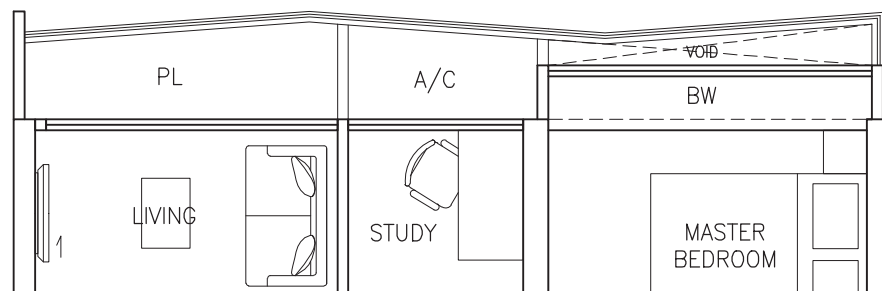
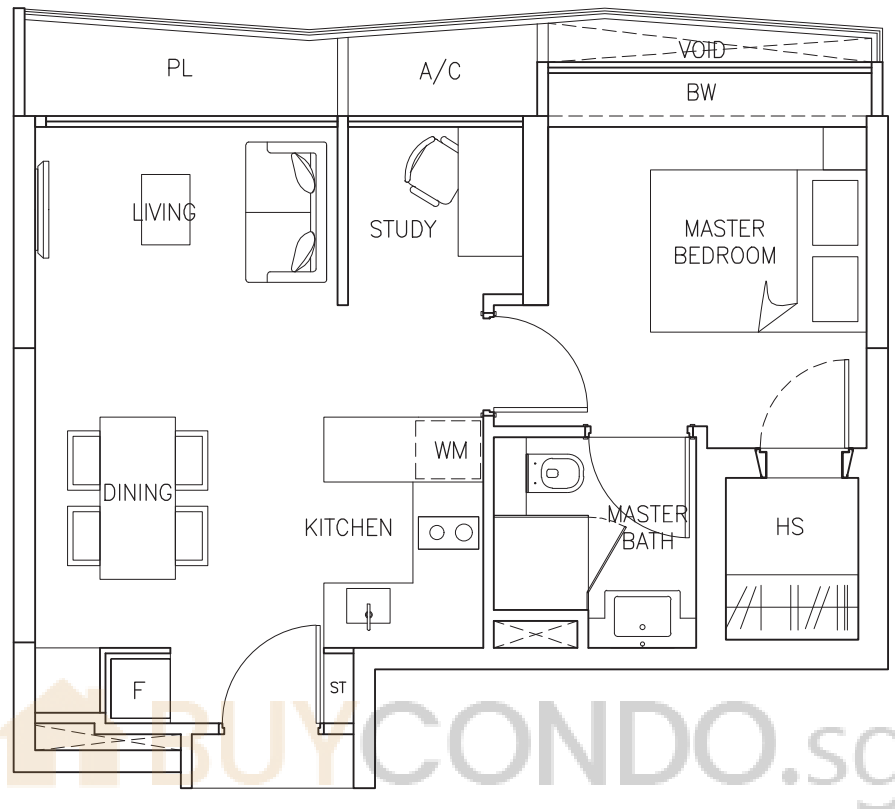
0 1 2 3 4 5 Metres



Type A1s

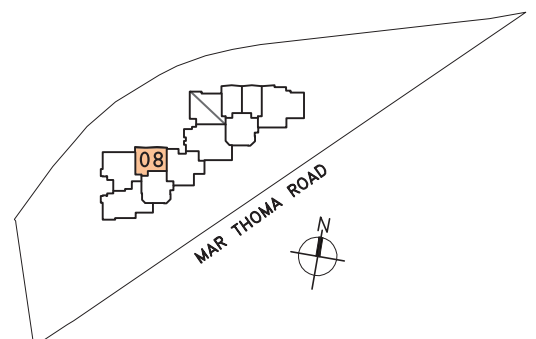
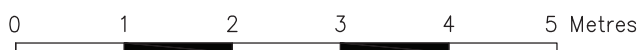
1-Bedroom + Study
48 sqm / 516 sqft

#09-08, #11-08, #13-08
#15-08, #17-08, #19-08
#21-08, #23-08



Type A1sa (Partial Plan)

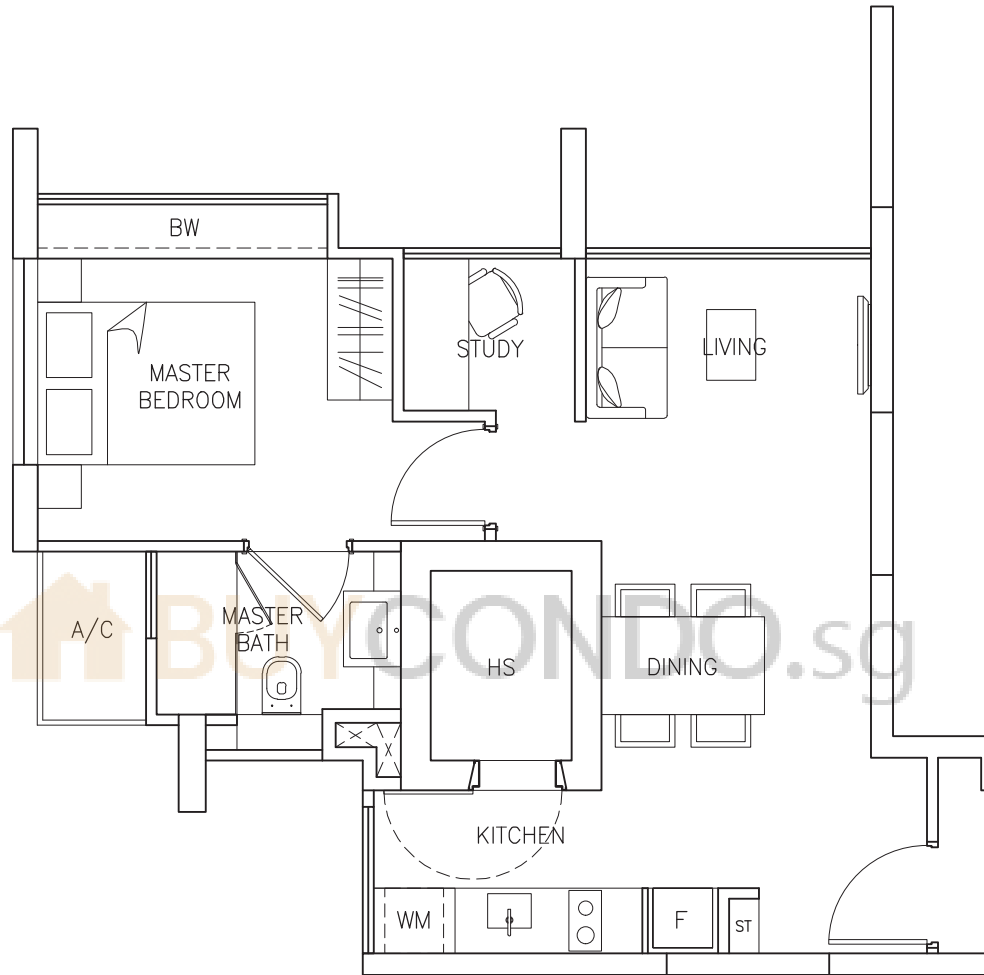
#10-08, #12-08, #14-08
#16-08, #18-08, #20-08
#22-08, #24-08



Type A2s

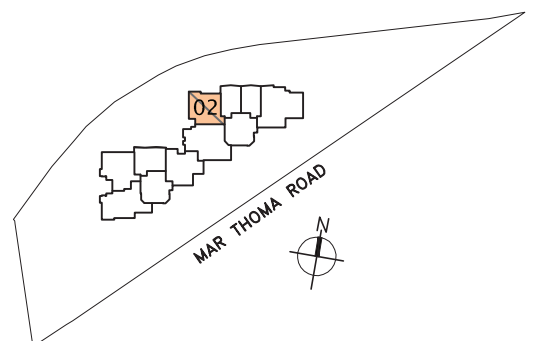
1-Bedroom + Study
48 sqm / 516 sqft

#09-02, #10-02, #11-02
#12-02, #13-02, #14-02
#15-02, #16-02



1

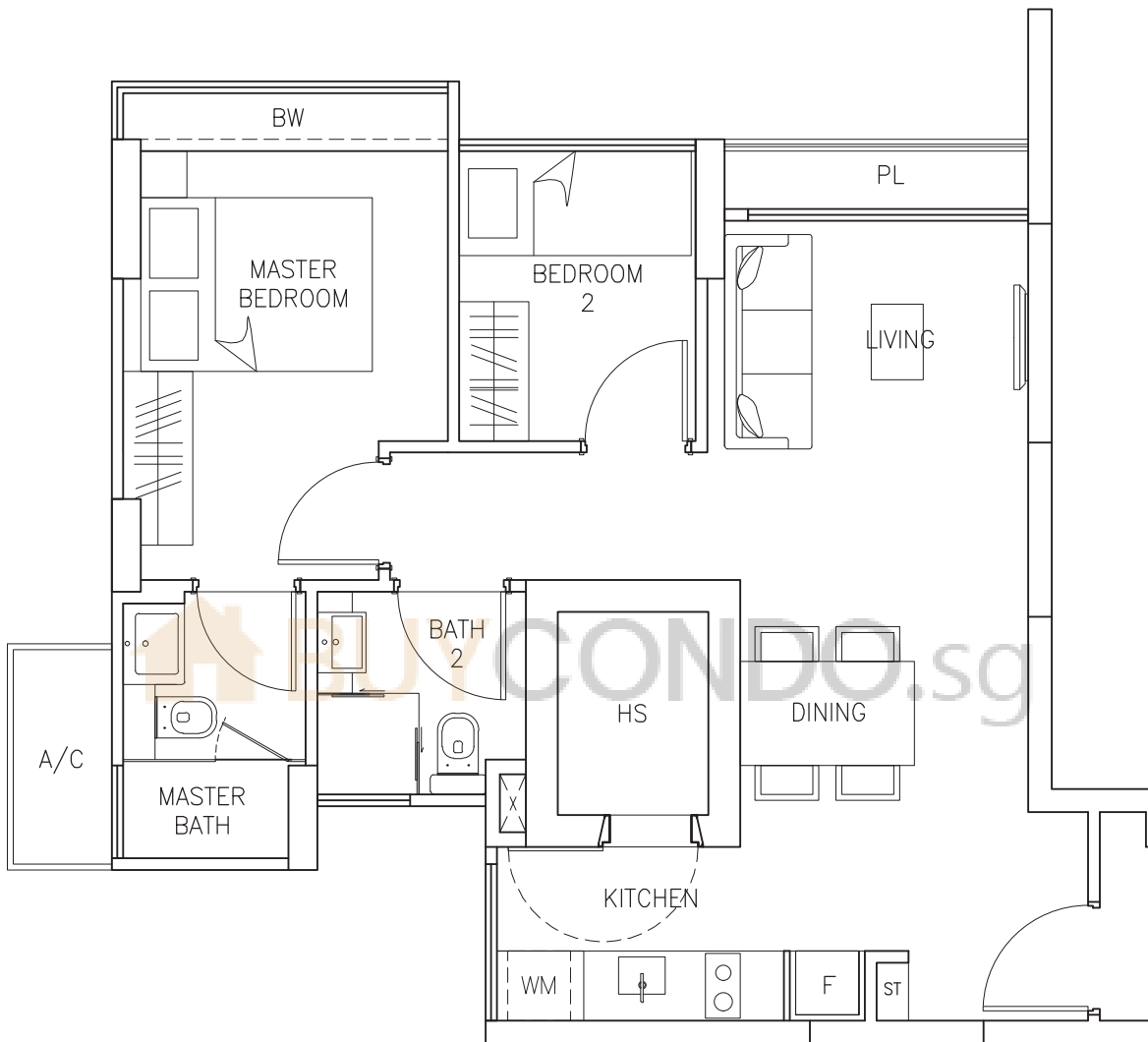
0 1 2 3 4 5 Metres



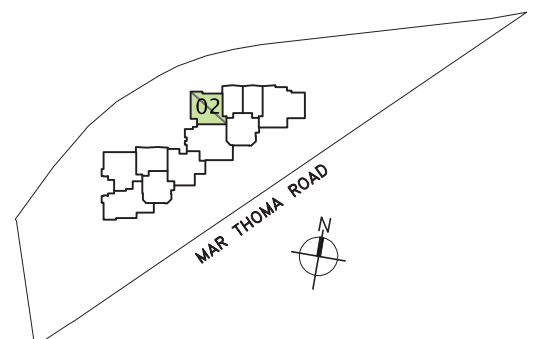
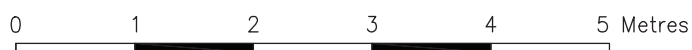
Type B1

2-Bedroom
60 sqm / 645 sqft

#17-02, #18-02, #19-02
#20-02, #21-02, #22-02
#23-02, #24-02



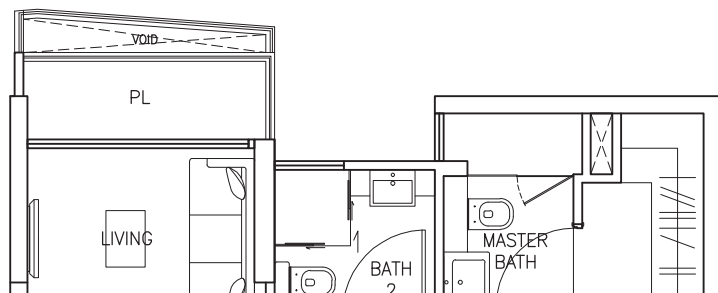
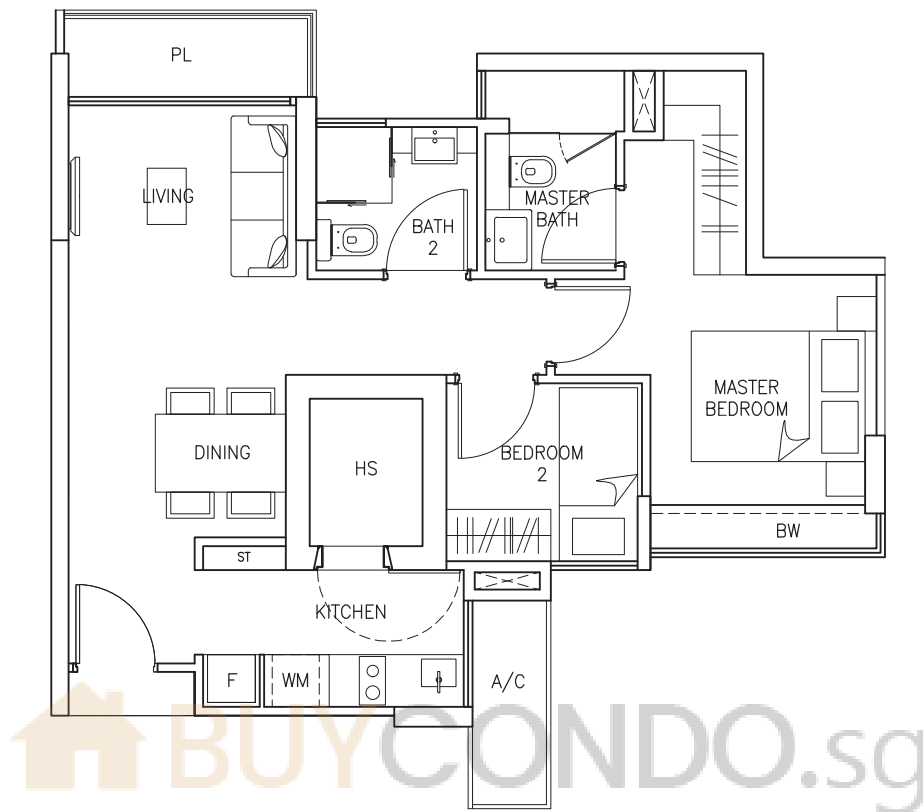
1



Type B2

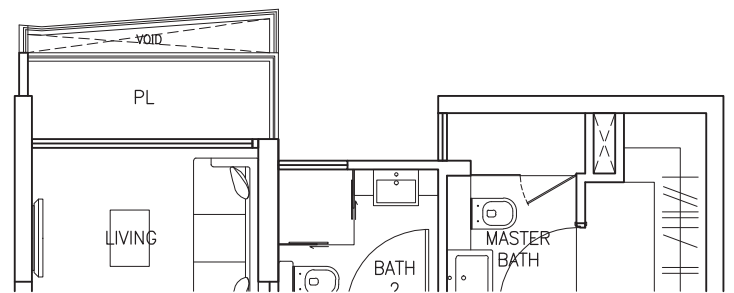
2-Bedroom
61 sqm / 656 sqft

#09-09, #11-09, #13-09
#15-09, #17-09, #19-09



Type B2a (Partial Plan)

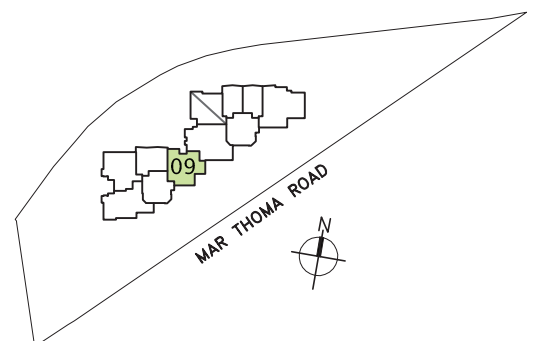
#10-09, #12-09, #14-09
#16-09, #18-09, #20-09
#22-09, #24-09



Type B2b (Partial Plan)

#21-09, #23-09

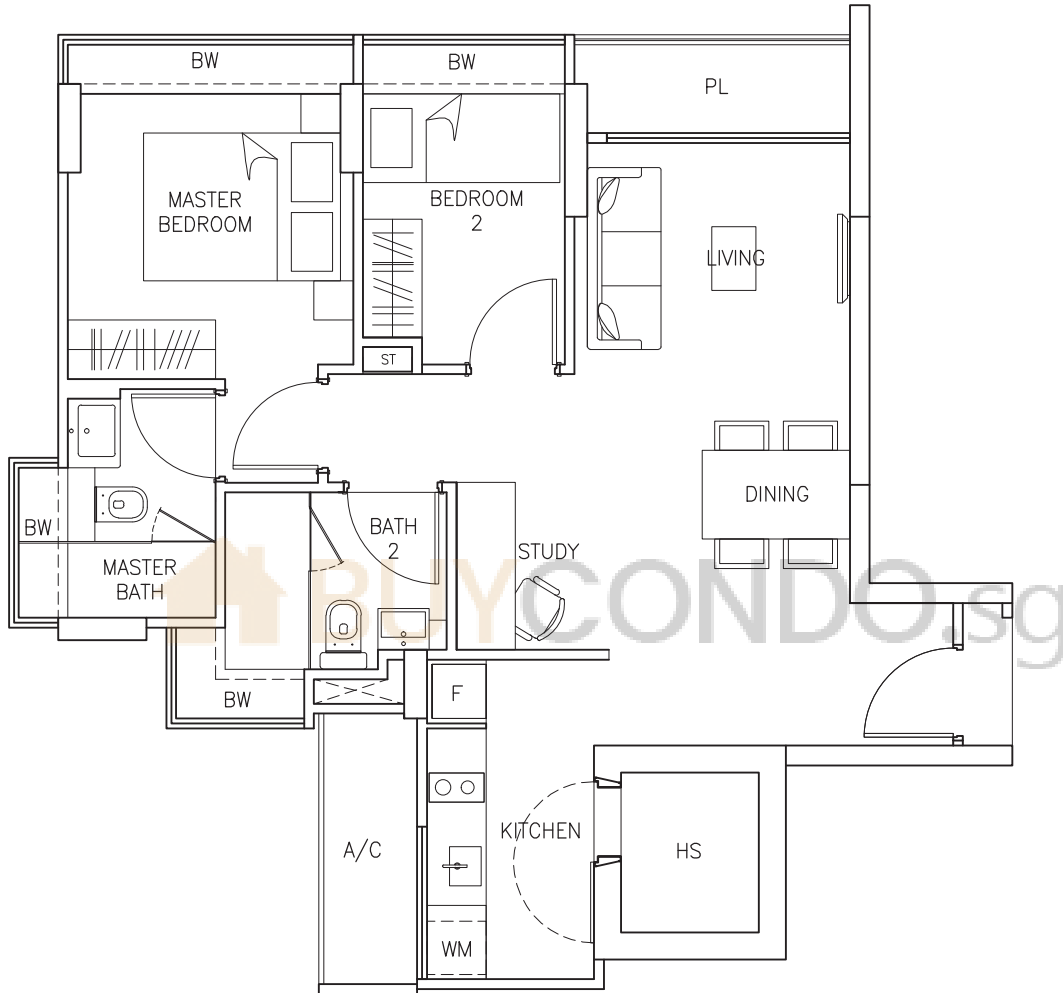
0 1 2 3 4 5 Metres



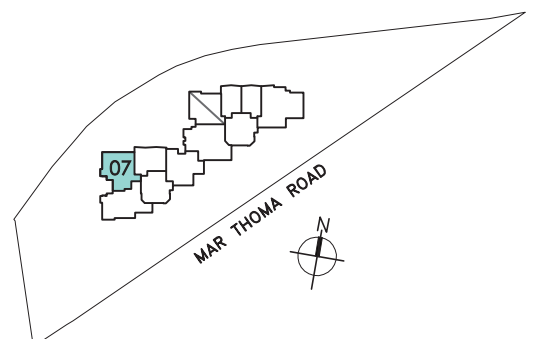
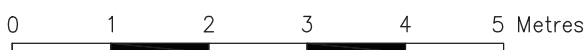
Type B1s

2-Bedroom + Study
70 sqm / 753 sqft

#10-07, #11-07, #12-07
#13-07, #14-07, #15-07
#16-07, #17-07, #18-07
#19-07, #20-07, #21-07
#22-07, #23-07, #24-07



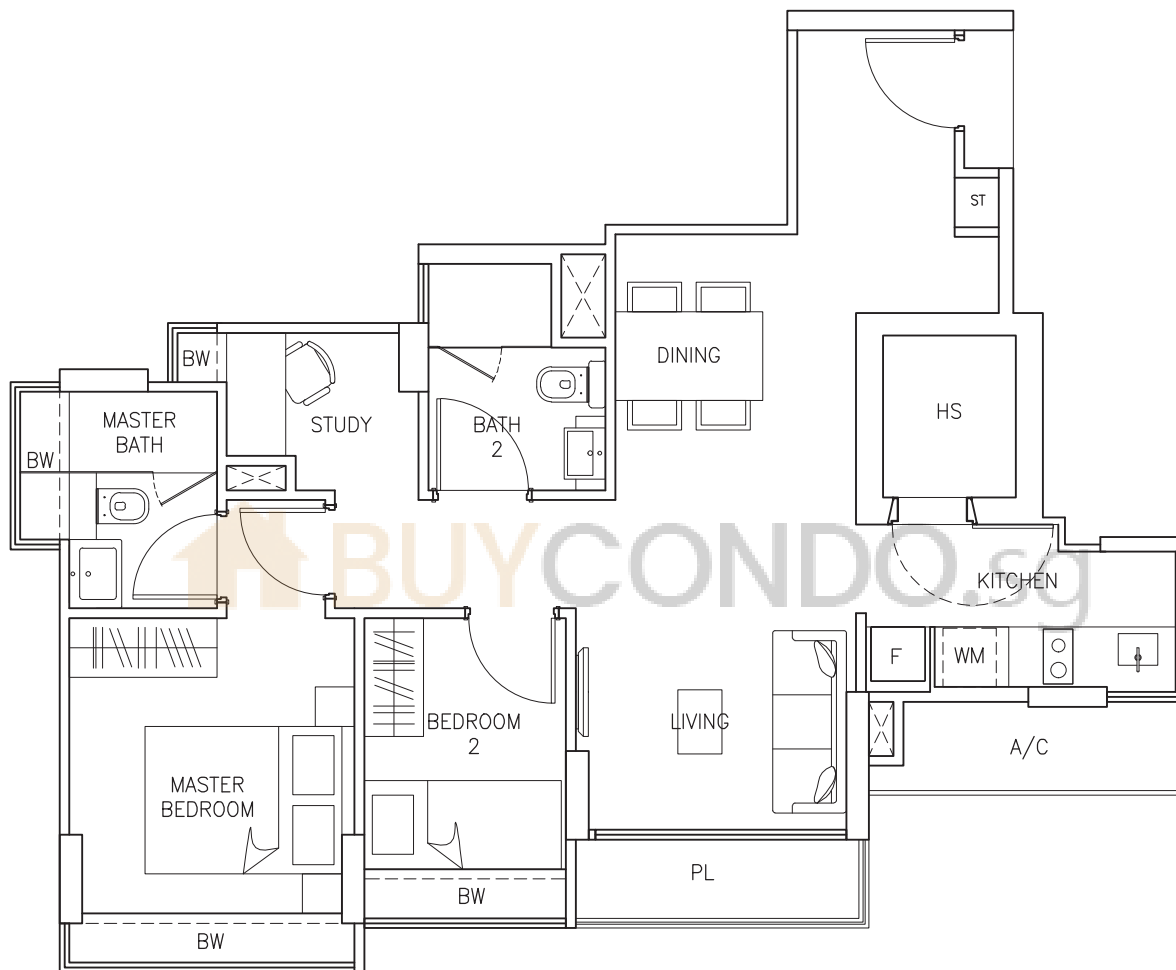
1



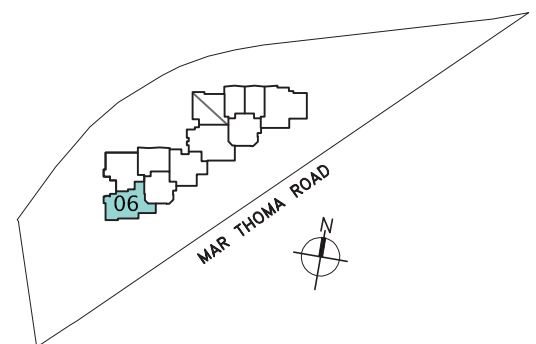
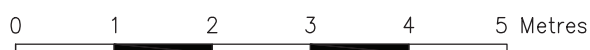
Type B2s

2-Bedroom + Study
73 sqm / 785 sqft

- #10-06, #11-06, #12-06
- #13-06, #14-06, #15-06
- #16-06, #17-06, #18-06
- #19-06, #20-06, #21-06
- #22-06, #23-06, #24-06



1

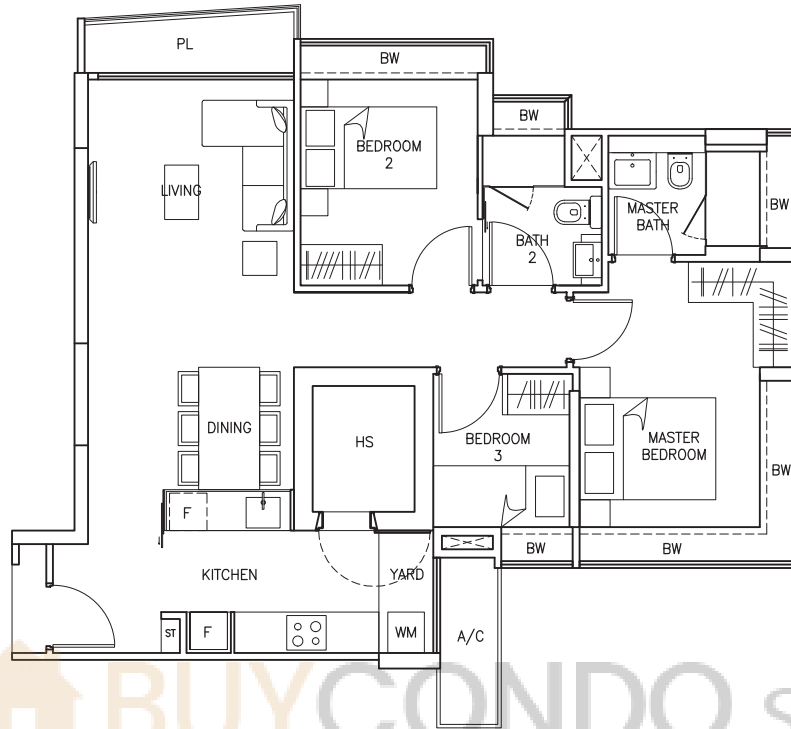


All plans are subject to changes as may be approved by the relevant authorities. All floor areas are approximate only and are subject to government resurvey.

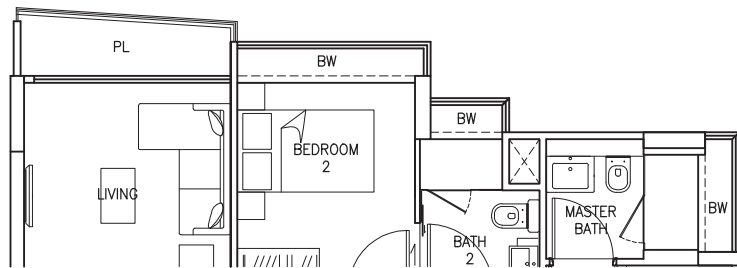
Type C1

3-Bedroom
88 sqm / 947 sqft

#09-05, #11-05, #13-05
#15-05, #17-05, #19-05

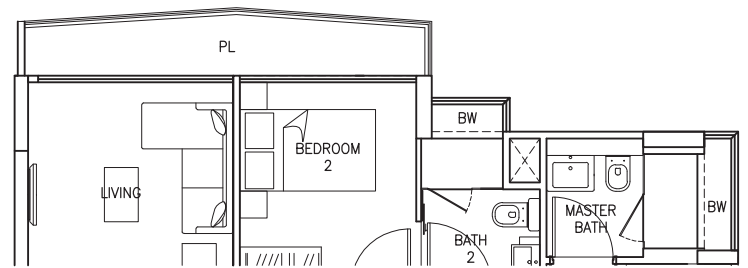


BUYCONDO.sg



Type C1a (Partial Plan)

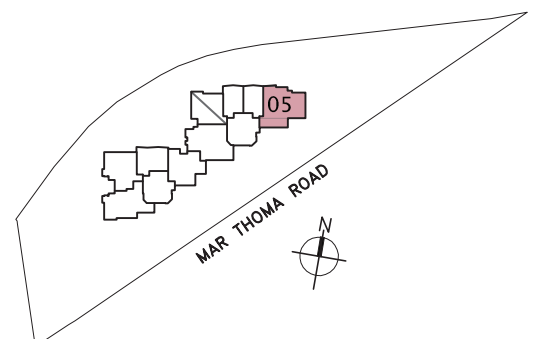
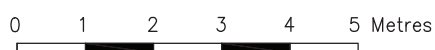
#10-05, #12-05, #14-05
#16-05, #18-05, #20-05
#22-05, #24-05



Type C1b (Partial Plan)

89 sqm / 957 sqft

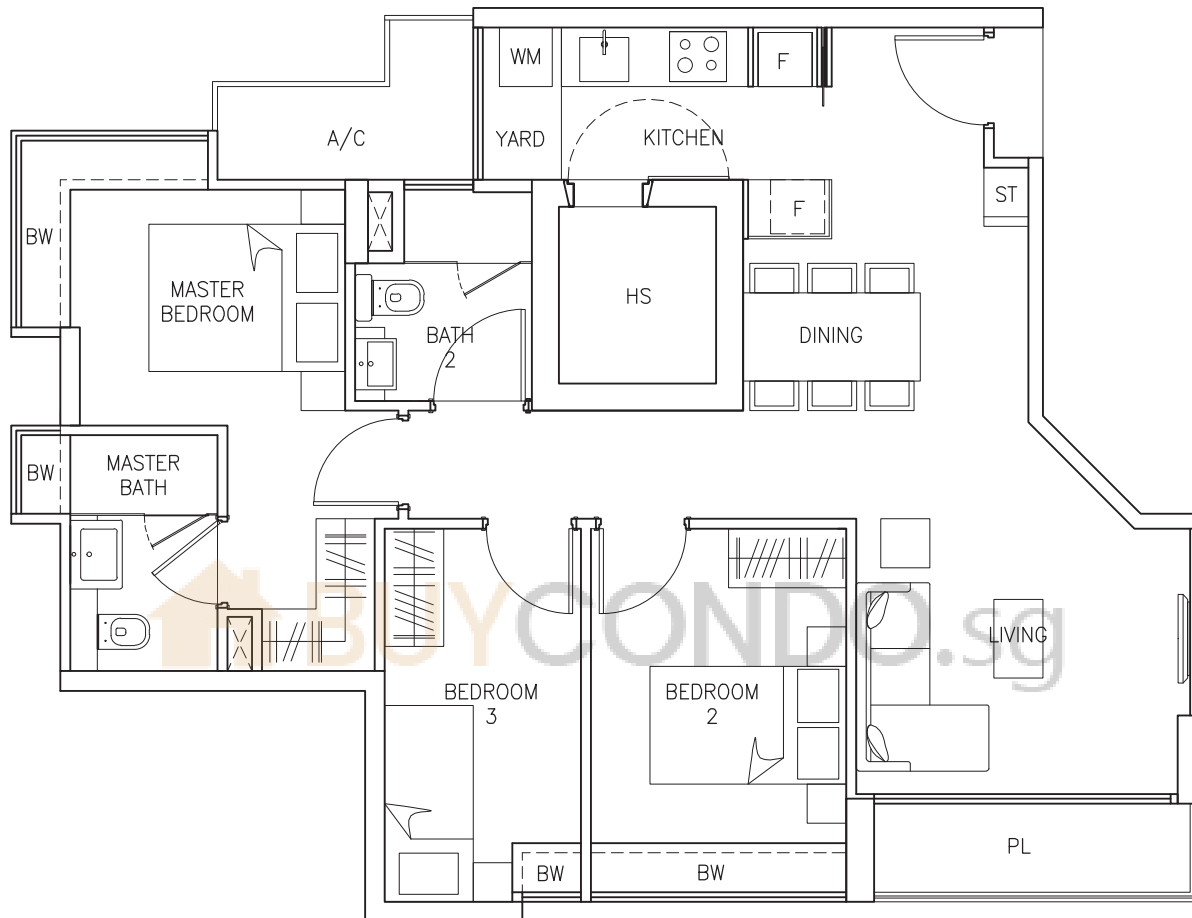
#21-05, #23-05, #25-05



Type C2

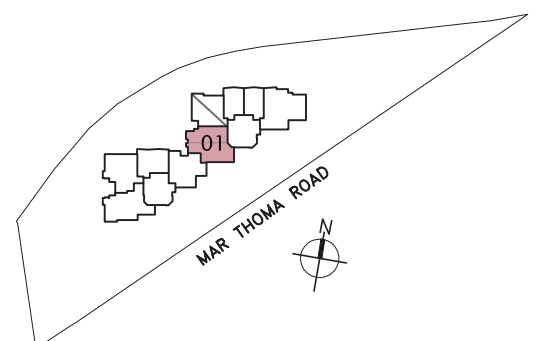
3-Bedroom
86 sqm / 925 sqft

#09-01, #10-01, #11-01
#12-01, #13-01, #14-01
#15-01, #16-01, #17-01
#18-01, #19-01, #20-01
#21-01, #22-01, #23-01
#24-01, #25-01



1

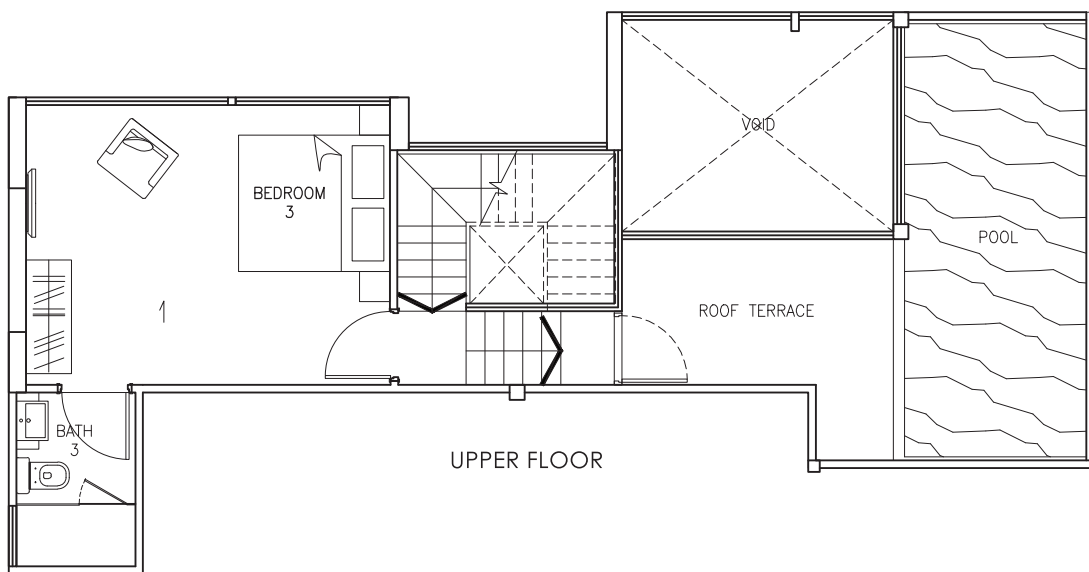
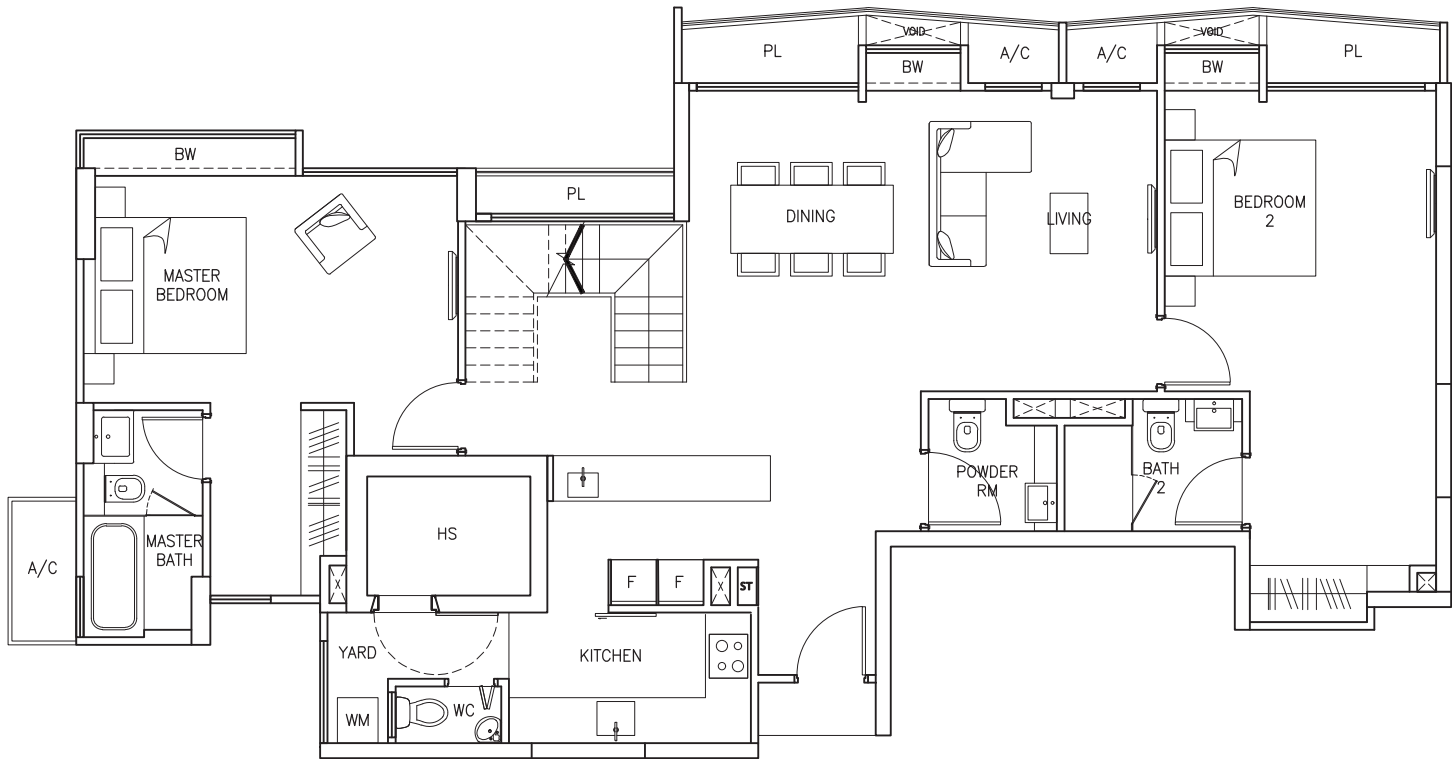
0 1 2 3 4 5 Metres



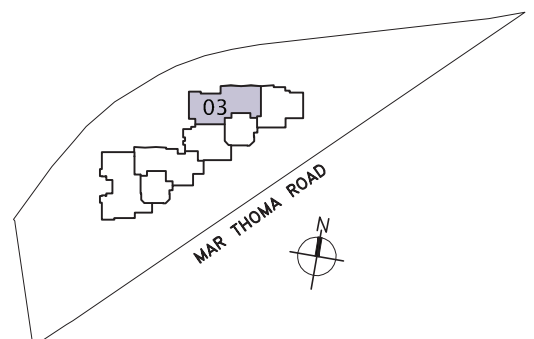
Type PH1

203 sqm / 2,185 sqft

#25-03



0 1 2 3 4 5 Metres

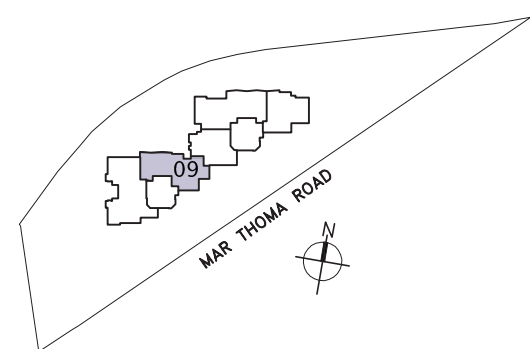
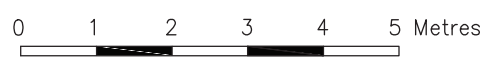
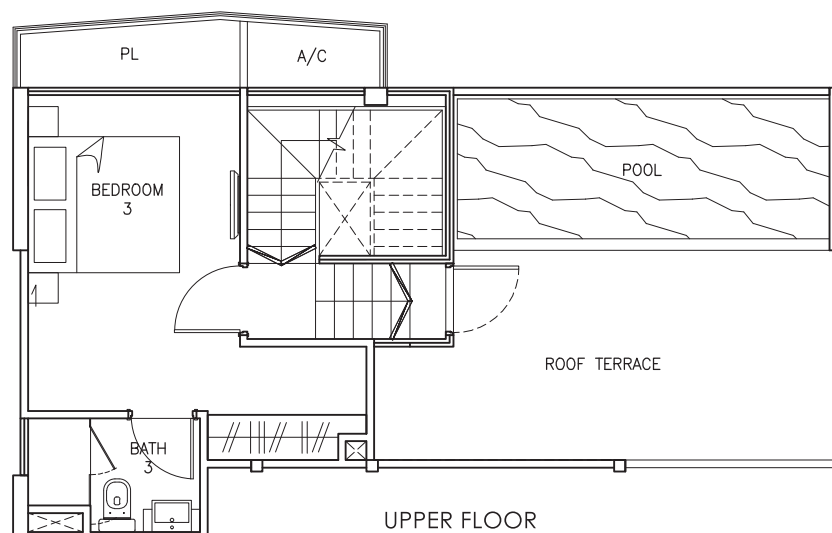
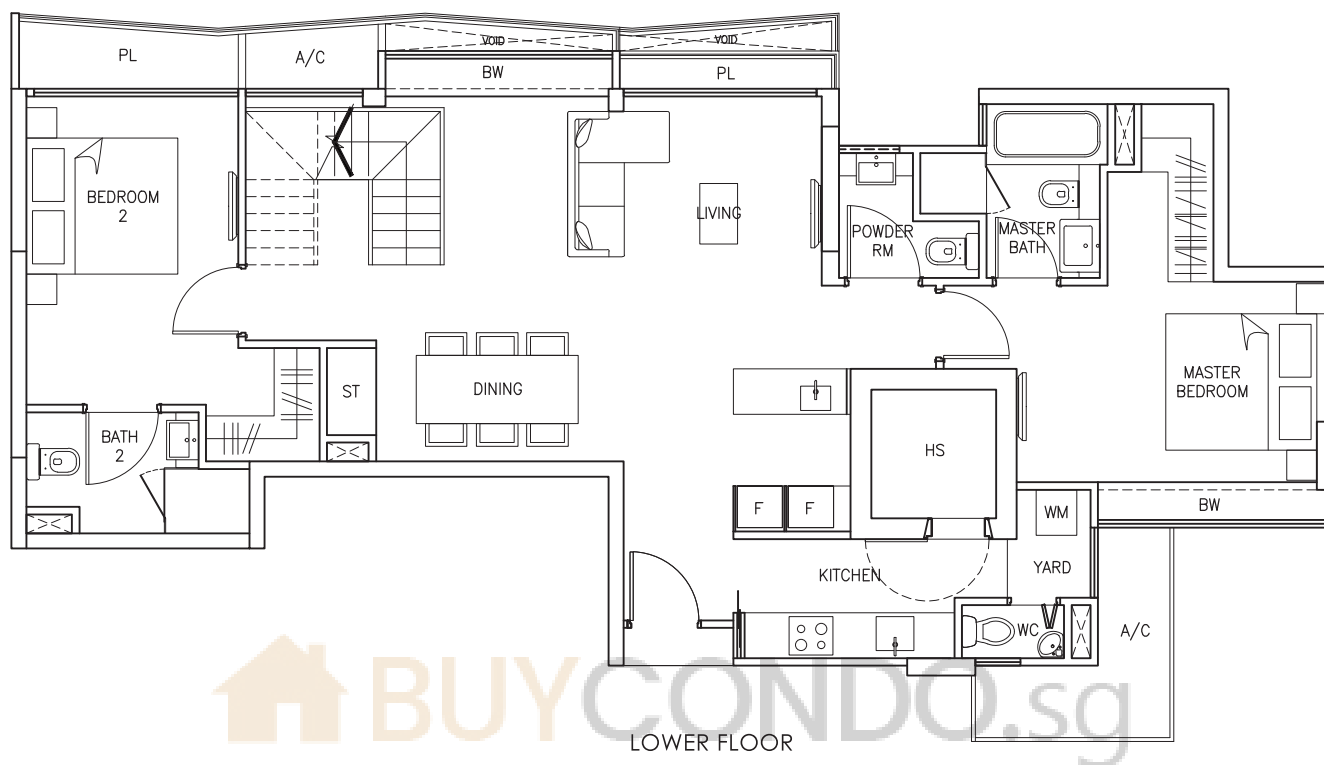


All plans are subject to changes as may be approved by the relevant authorities. All floor areas are approximate only and are subject to government resurvey.

Type PH2

173 sqm / 1,862 sqft

#25-09

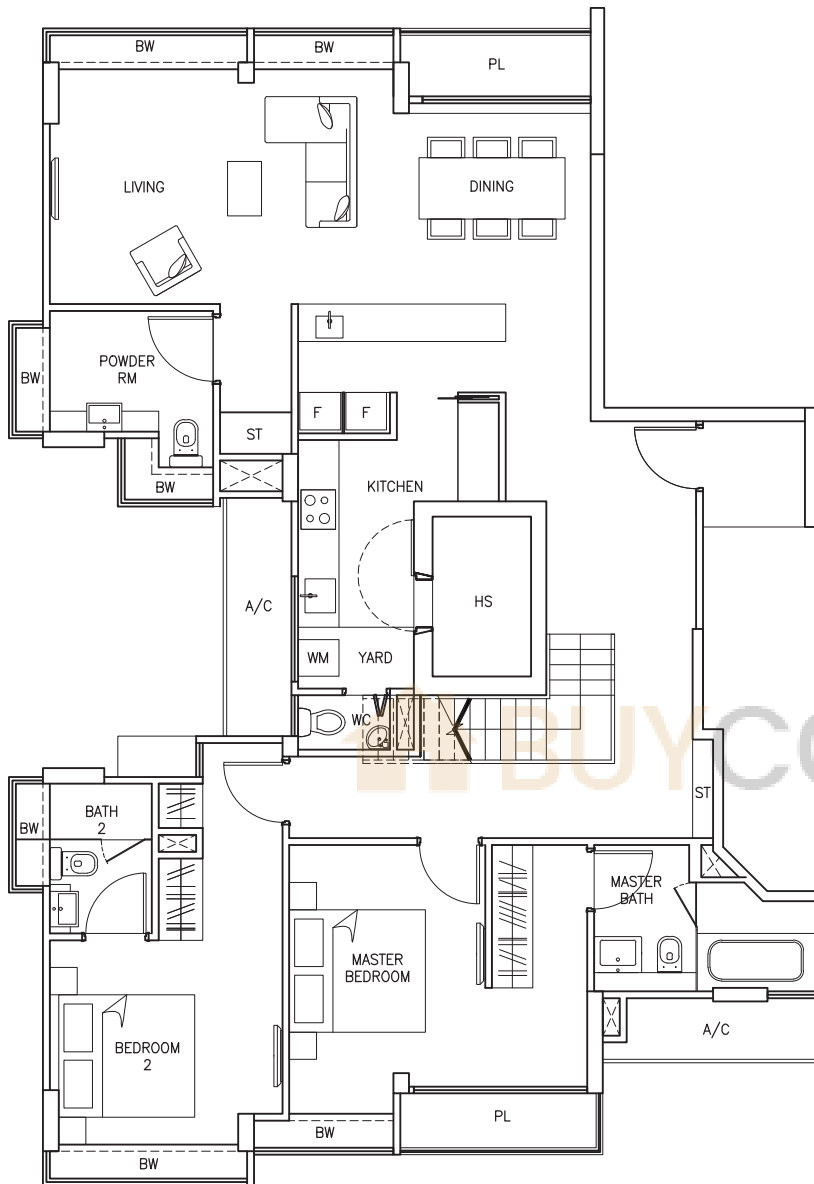


All plans are subject to changes as may be approved by the relevant authorities. All floor areas are approximate only and are subject to government resurvey.

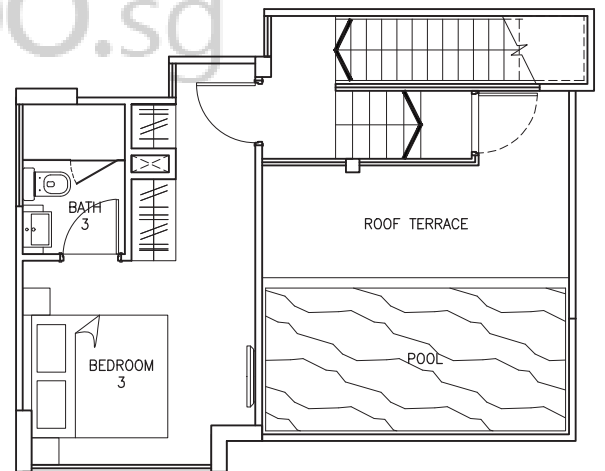
Type PH3

191 sqm / 2,055 sqft

#25-07

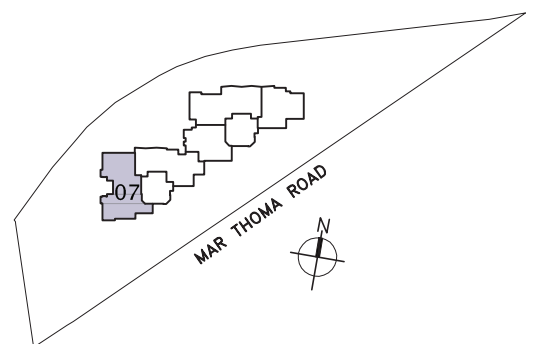


1
LOWER FLOOR



UPPER FLOOR

0 1 2 3 4 5 Metres



All plans are subject to changes as may be approved by the relevant authorities. All floor areas are approximate only and are subject to government resurvey.