








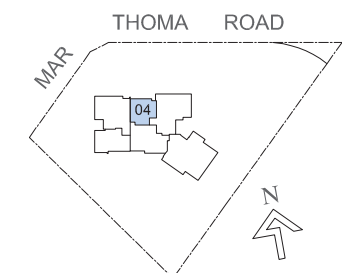
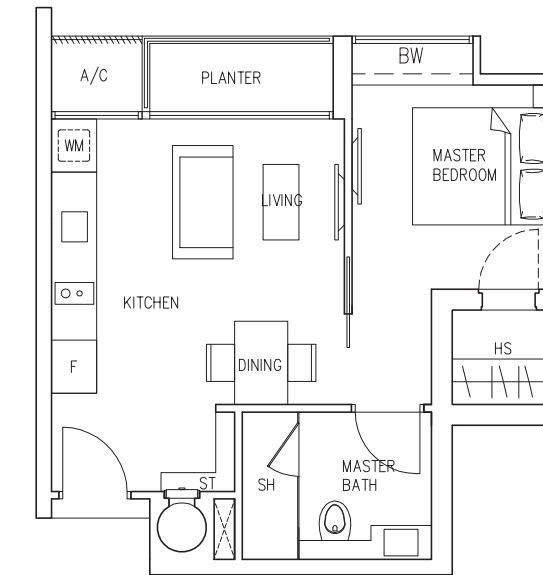
Unit Distribution Chart

	#01	#02	#03	#04	#05
27	PH1	A1s	PH2	A1a	PH3
26	C1	A1s	B1	A1	B1s
25	C1	A1s	B1	A1	B1s
24	C1	A1s	B1	A1	B1s
23	C1	A1s	B1	A1	B1s
22	C1	A1s	B1	A1	B1s
21	C1	A1s	B1	A1	B1s
20	C1	A1s	B1	A1	B1s
19	C1	A1s	B1	A1	B1s
18	C1	A1s	B1	A1	B1s
17	C1	A1s	B1	A1	B1s
16	C1	A1s	B1	A1	B1s
15	C1	A1s	B1	A1	B1s
14	C1	A1s	B1	A1	B1s
13	C1	A1s	B1	A1	B1s
12	C1	A1s	B1	A1	B1s
11	C1	A1s	B1	A1	B1s
10	C1	A1s	B1	A1	B1s
9	C1	A1s	B1	A1	B1s
8	C1	A1s	B1	A1	B1s
7	C1	A1s	B1	A1	B1s
6	C1	A1s			
5	Landscape Deck				
4	Carpark				
3	Carpark				
2	Carpark				
1	Carpark				
B	Carpark				

1-Bedroom		2-Bedroom		3-Bedroom	
1-Bedroom + Study		2-Bedroom + Study		3-Bedroom + Study (Penthouse)	
		2-Bedroom + Study (Penthouse)			

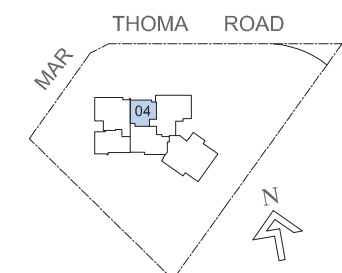
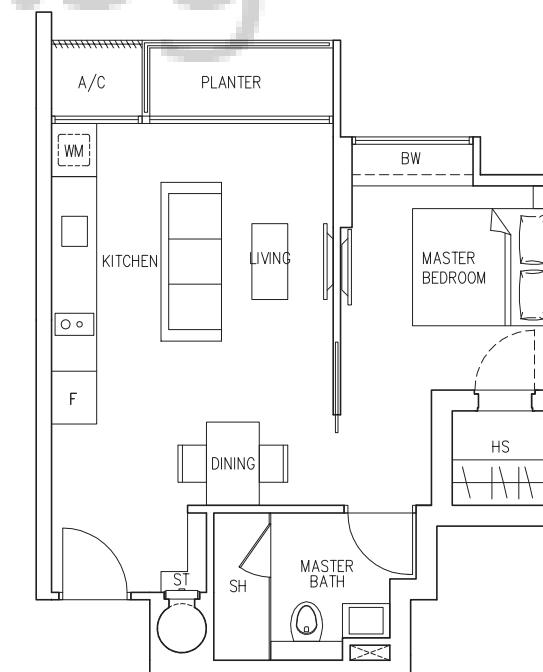
Type A1

1-Bedroom
42 sq m / 452 sq ft
#07-04 to #25-04



Type A1a

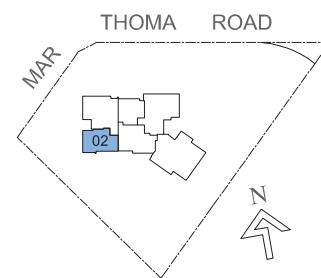
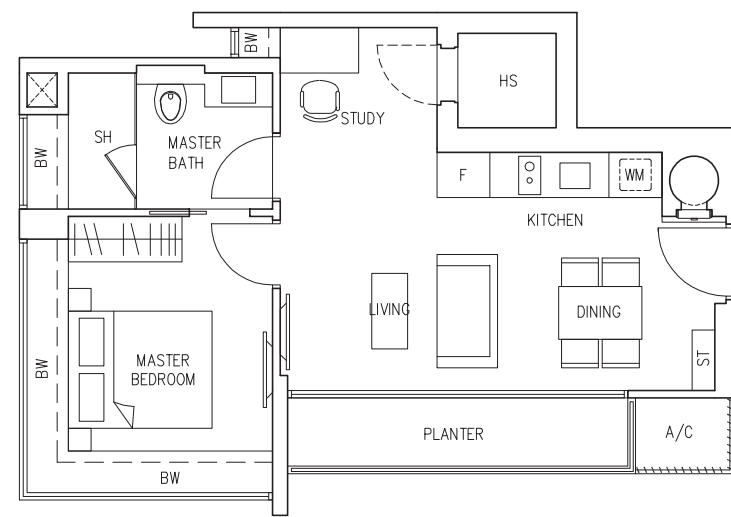
1-Bedroom
46 sq m / 495 sq ft
#26-04



All plans are not to scale and subject to changes as may be approved by the relevant authorities. All floor areas are approximate only and are subject to government resurvey.

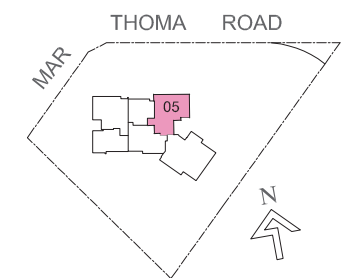
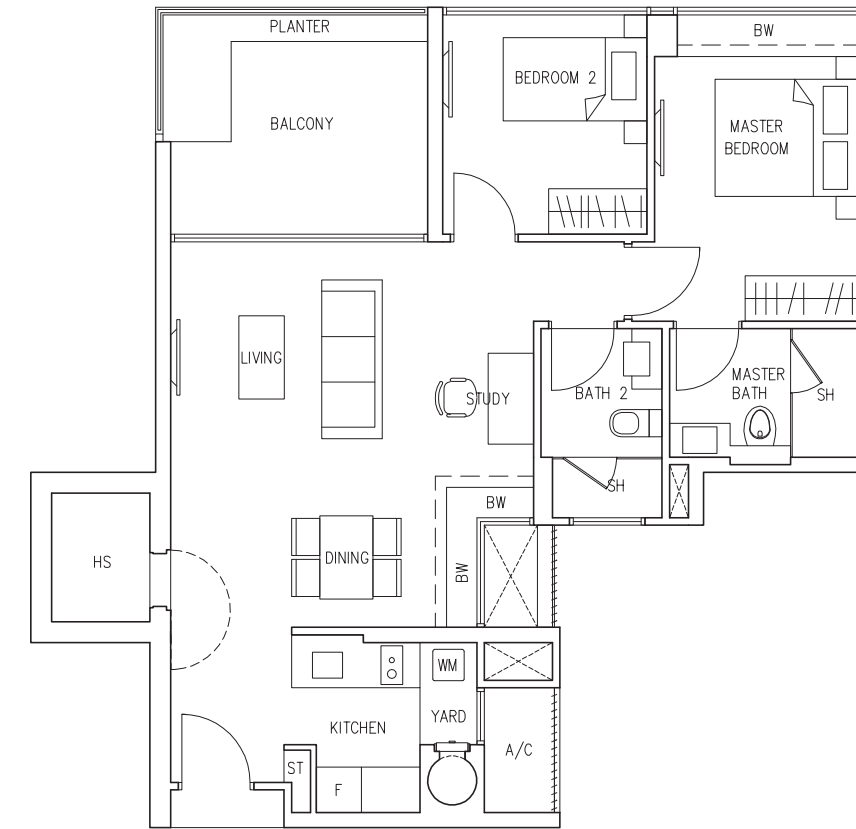
Type A1s

1-Bedroom + Study
51 sq m / 548 sq ft
#06-02 to #26-02



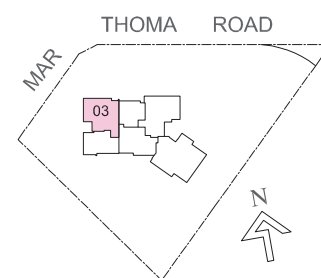
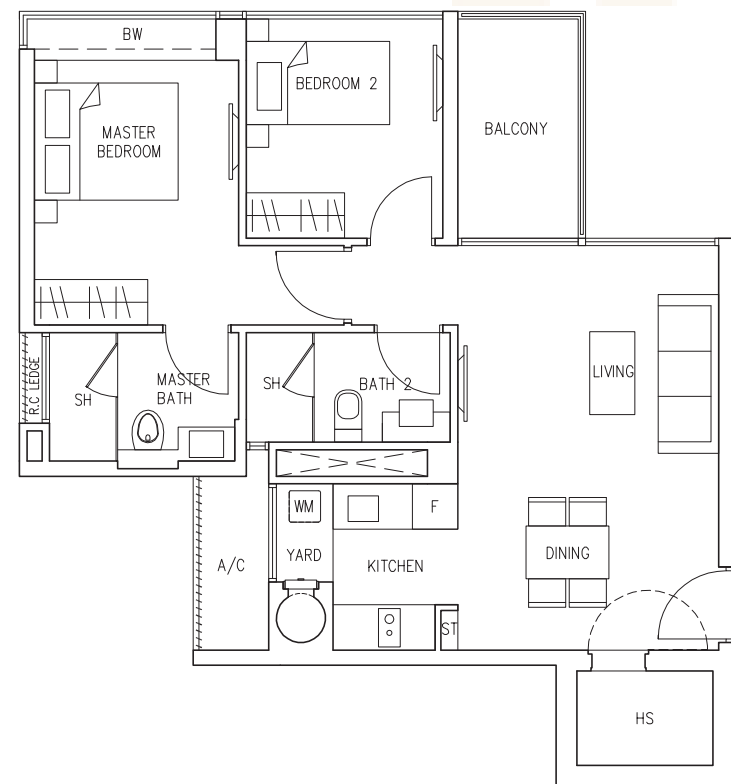
Type B1s

2-Bedroom + Study
82 sq m / 882 sq ft
#07-05 to #25-05



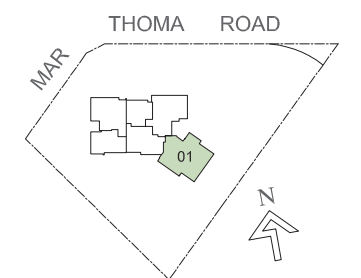
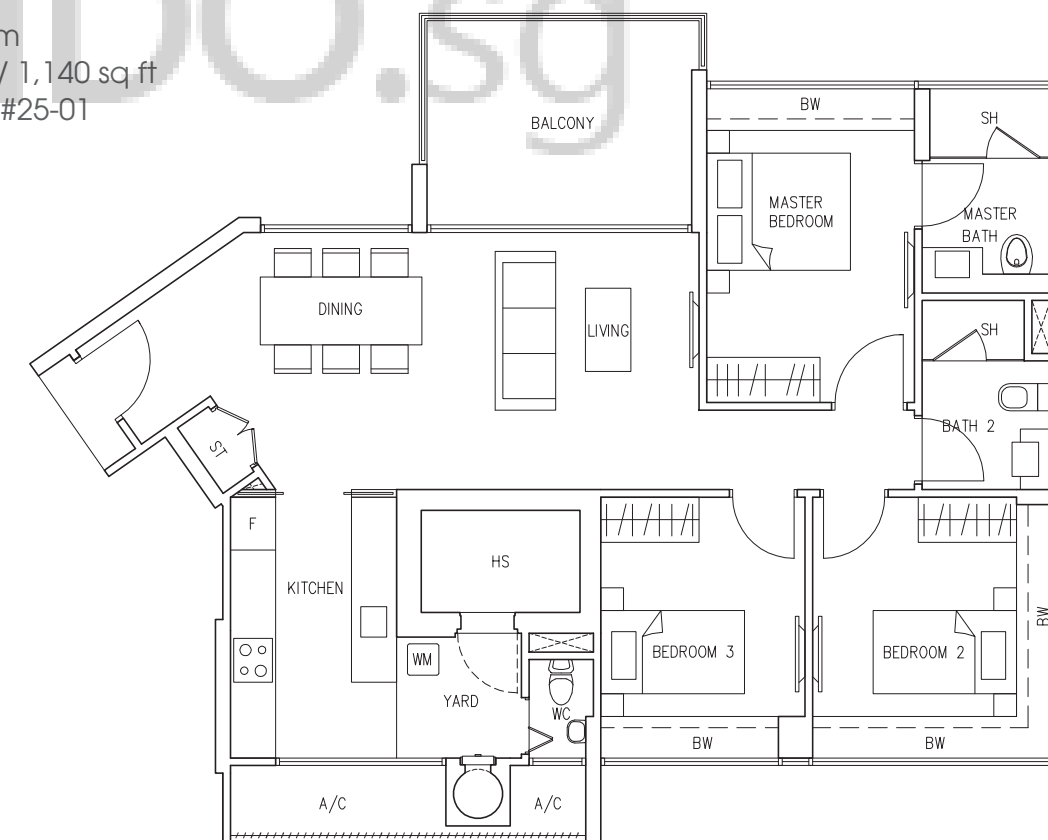
Type B1

2-Bedroom
69 sq m / 742 sq ft
#07-03 to #25-03



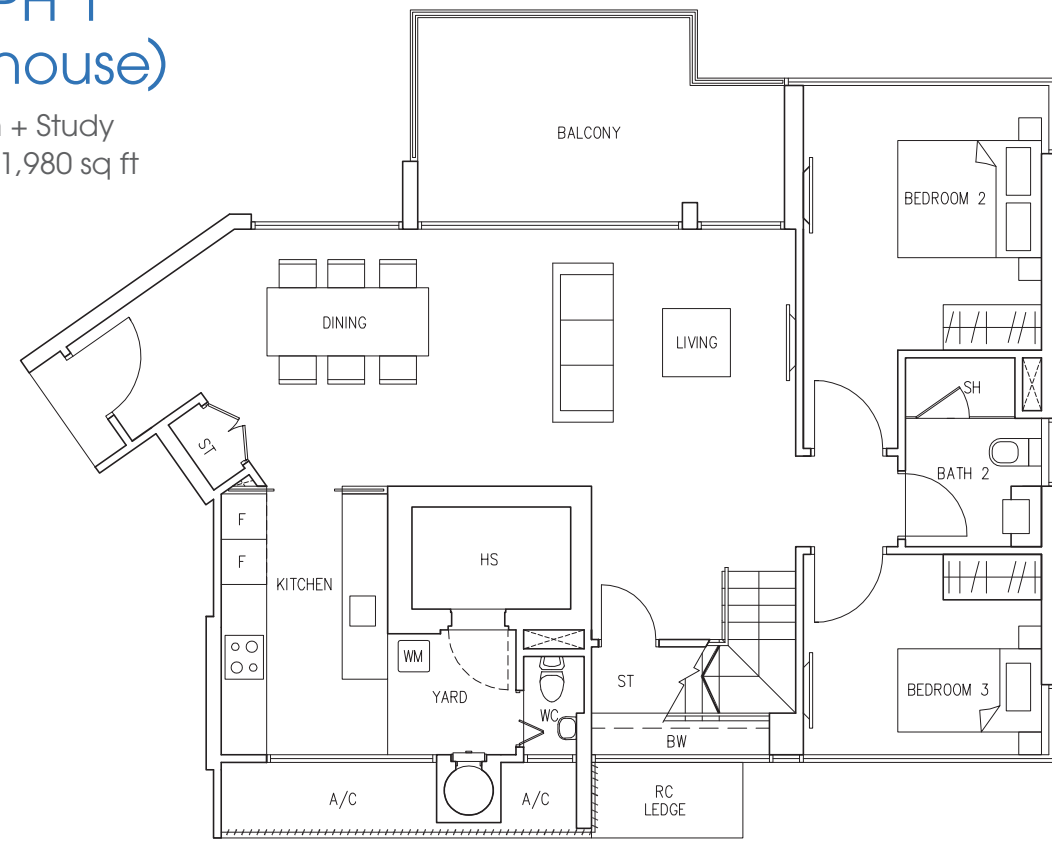
Type C1

3-Bedroom
106 sq m / 1,140 sq ft
#06-01 to #25-01

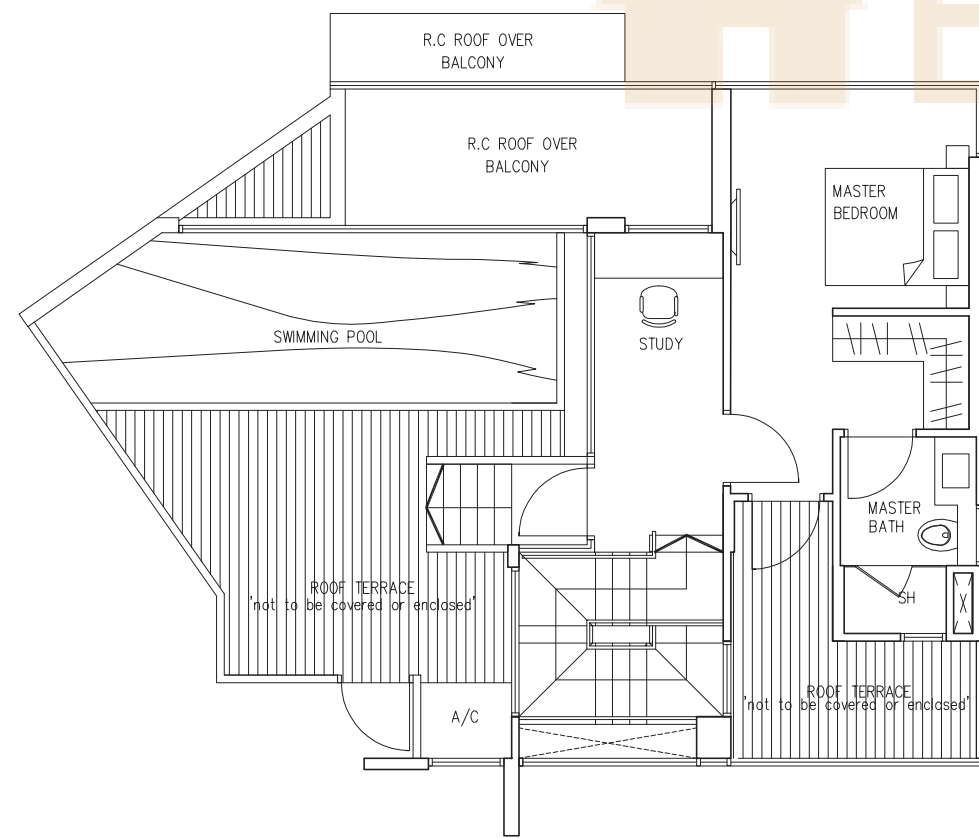


Type PH 1 (Penthouse)

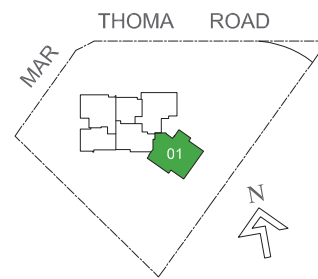
3-Bedroom + Study
184 sq m / 1,980 sq ft
#26-01



LOWER PENTHOUSE



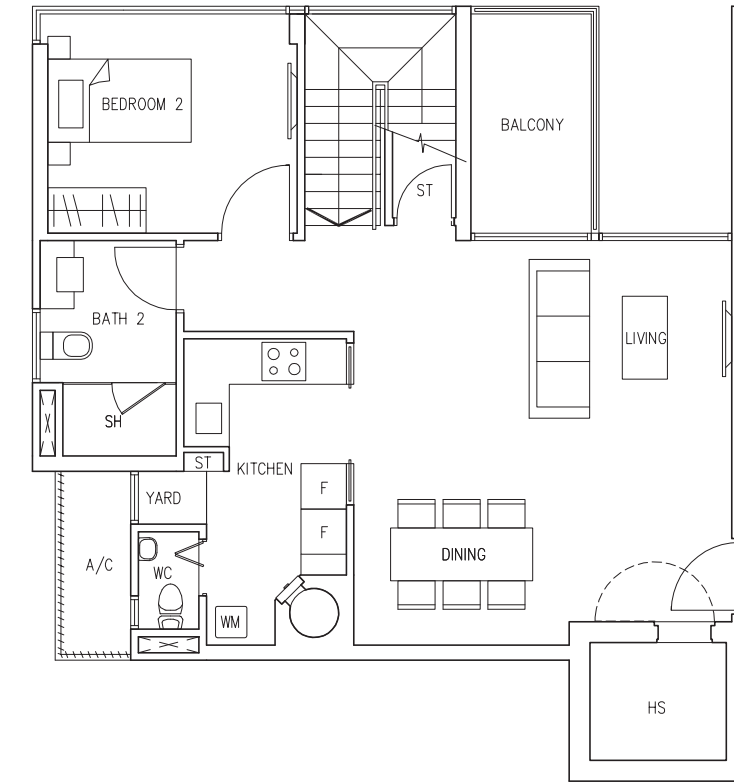
UPPER PENTHOUSE



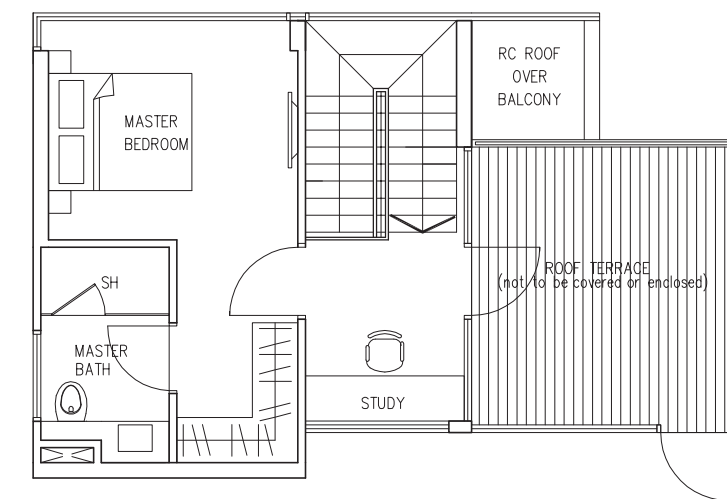
All plans are not to scale and subject to changes as may be approved by the relevant authorities. All floor areas are approximate only and are subject to government resurvey.

Type PH 2 (Penthouse)

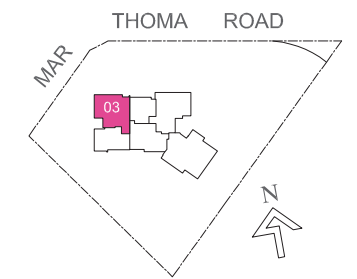
2-Bedroom + Study
121 sq m / 1,302 sq ft
#26-03



LOWER PENTHOUSE



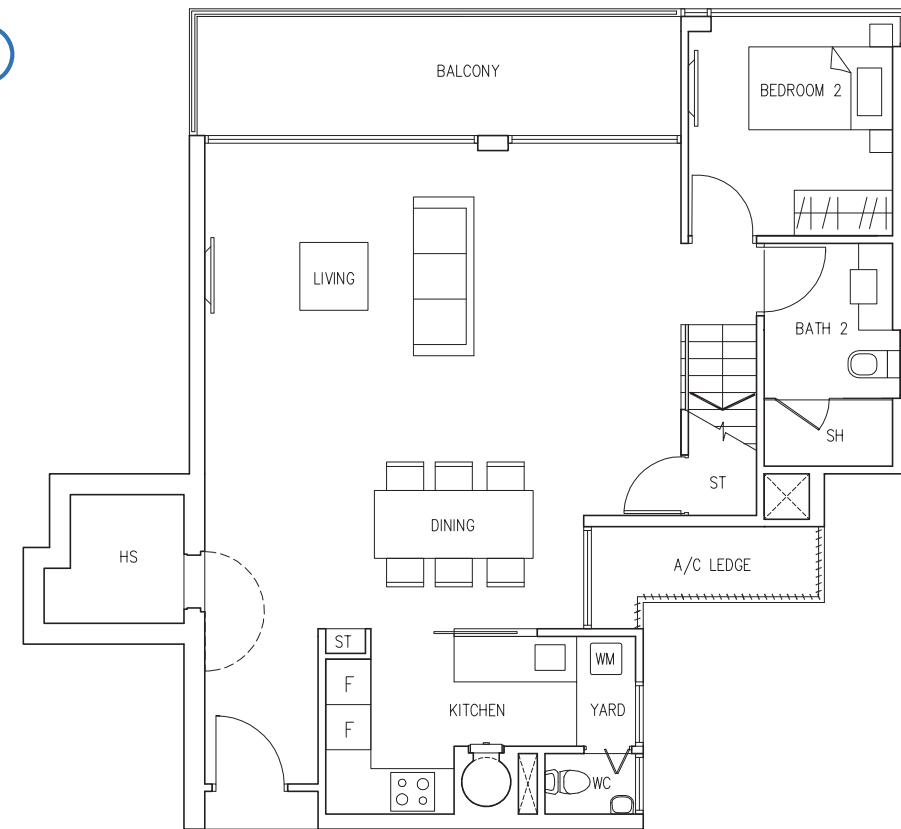
UPPER PENTHOUSE



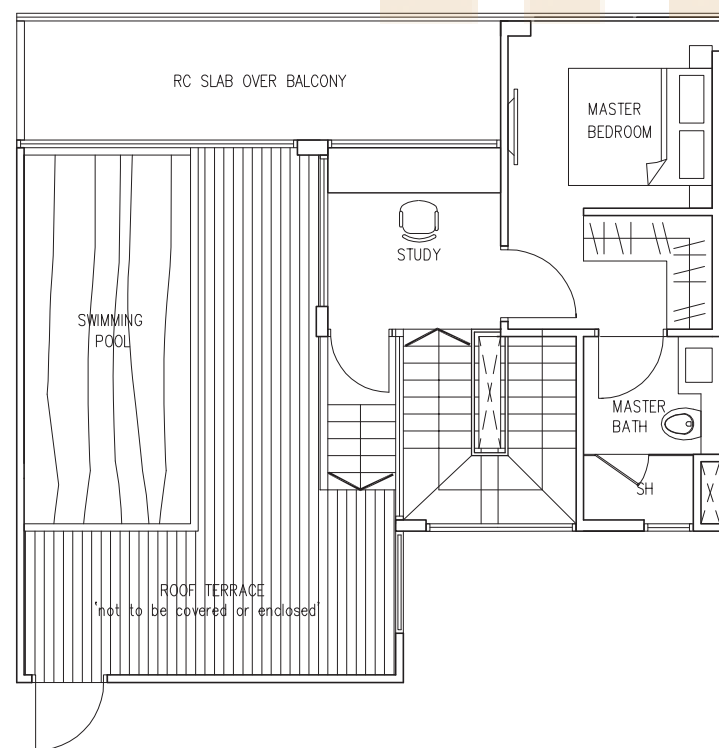
All plans are not to scale and subject to changes as may be approved by the relevant authorities. All floor areas are approximate only and are subject to government resurvey.

Type PH 3 (Penthouse)

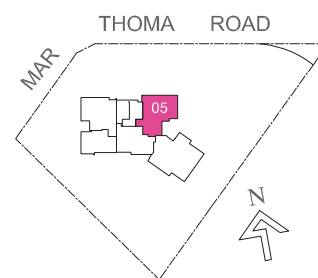
2-Bedroom + Study
152 sq m / 1,636 sq ft
#26-05



LOWER PENTHOUSE



UPPER PENTHOUSE



Specifications

- 1.0 FOUNDATION**
Piled foundation
- 2.0 SUPERSTRUCTURE**
Reinforced concrete and/or steel structure
- 3.0 WALLS**
 - 3.1 External - Reinforced concrete and/or brick wall
 - 3.2 Internal - Reinforced concrete and/or brick and/or block and/or dry wall
- 4.0 ROOF**
Flat Roof: Reinforced concrete slab with insulation and waterproofing
- 5.0 CEILING**
 - 5.1 Plaster and/or skim coat and/or bulkhead with emulsion paint to Living, Dining, Bedrooms, Study, Store (ST), Balcony, HS and other areas where appropriate
 - 5.2 Ceiling board and/or bulkhead with emulsion paint to Kitchen, Bathrooms, Yard, WC and other areas where appropriate
 - 5.3 Ceiling board with emulsion paint and/or skim coat and/or bulkhead with emulsion paint in other areas where appropriate
- 6.0 FINISHES**
 - 6.1 Wall: Internal
 - 6.1.1 Tiles up to false ceiling height and on exposed surfaces of Bathrooms, Kitchen and WC
 - 6.1.2 Plaster and/or skim coat with emulsion paint to other areas
 - 6.2 Wall: External
Plaster and/or skim coat with emulsion paint to other areas
 - 6.3 Floor
 - 6.3.1 Composite stone to Living, Dining, Study (for Type A1s & B1s), Store (ST), Kitchen and Master Bath
 - 6.3.2 Timber strips to Bedrooms and Study. No skirting behind and/or within wardrobe area
 - 6.3.3 Tiles to Bath 2, HS, WC, Yard and Balcony
 - 6.3.4 Composite timber deck and/or Tiles to Roof Terrace

No finishes behind mirror, kitchen cabinets and areas enclosed by long bath and within false ceiling space
- 7.0 WINDOWS**
Powder coated aluminium framed windows
- 8.0 DOORS**
 - 8.1 Approved fire-rated timber main door
 - 8.2 Aluminium-framed sliding glass door to Balcony and/or Planter
 - 8.3 Aluminium swing door to Roof Terrace
 - 8.4 Timber door to Bedrooms, Bathrooms
 - 8.5 Approved metal door to Household Shelter (HS)
 - 8.6 Sliding glass door to Kitchen (for Type C1, PH1, PH2, PH3)
 - 8.7 Good quality locksets and ironmongery to all doors
- 9.0 SANITARY FITTINGS**

Master Bath	Bath 2	WC
1 vanity top with basin, mixer and under-counter cabinet	1 vanity top with basin, mixer and under-counter cabinet	1 wash basin with tap
1 water closet	1 water closet	1 water closet
1 shower compartment with shower mixer	1 shower compartment with shower mixer	1 paper roll holder
1 paper roll holder	1 paper roll holder	1 towel rail
1 towel rail	1 towel rail	1 mirror
1 mirror	1 mirror	
- 10.0 ELECTRICAL INSTALLATION**
Please refer to Electrical Schedule for details
- 11.0 TV / TELEPHONE**
Please refer to Electrical Schedule for details
- 12.0 LIGHTNING PROTECTION**
Lightning protection shall be provided in compliance with the relevant Singapore Code
- 13.0 PAINTING**
See items 6.1 & 6.2
- 14.0 WATERPROOFING**
Waterproofing to floors of Bathrooms, WC, Kitchen, Yard, Balcony, Roof Terrace, Planter and other areas where appropriate
- 15.0 DRIVEWAY AND CARPARK**
Reinforced concrete floor with hardener and/or stone and/or pavers and/or tarmac to carpark and driveway
- 16.0 RECREATIONAL FACILITIES**

16.1 Swimming Pool	16.6 Gymnasium
16.2 Kids' Pool	16.7 Function Room
16.3 Jacuzzi	16.8 Changing Rooms
16.4 Barbecue Pavilions	16.9 Outdoor Fitness Corner
16.5 Kids' Play Area	