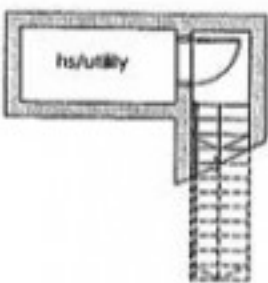


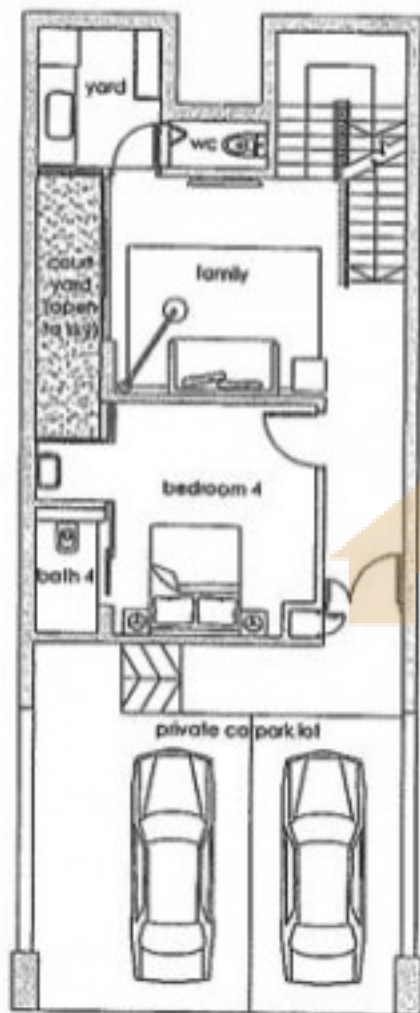
seven CRESCENT

typical type B . 431 sqm* / 4639 ft*

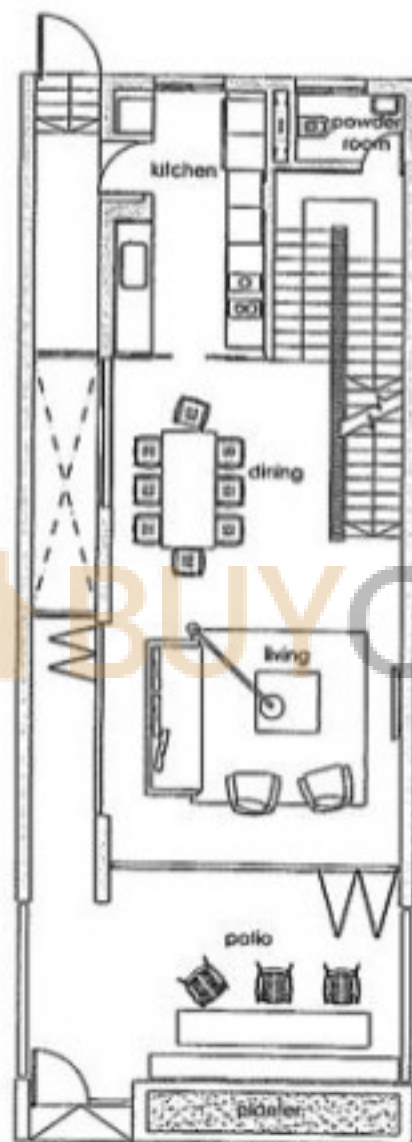
B. unit 7C, 7D, 7E, 7H, 7J, 7K | B1. unit 7B, 7L | B2. unit 7A, 7M



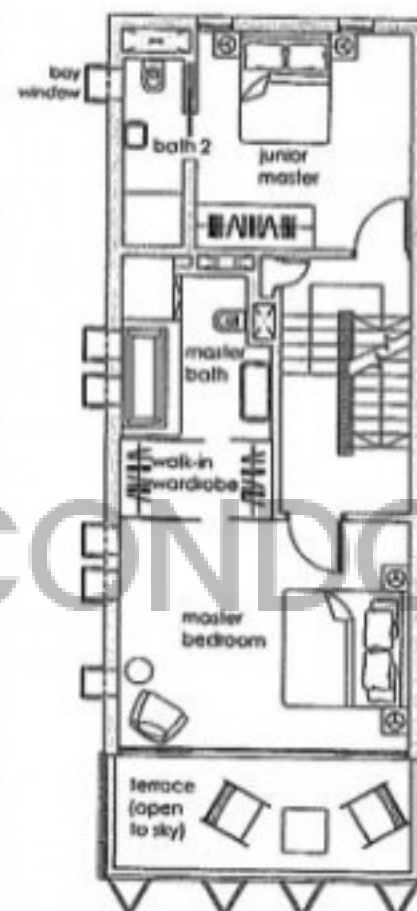
2nd basement



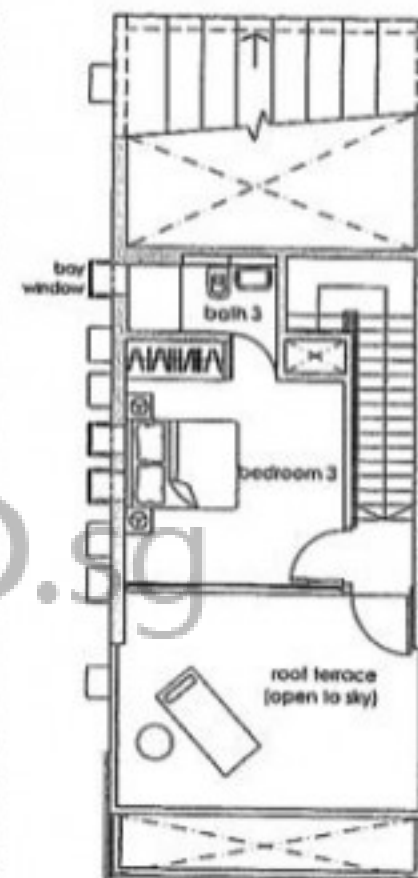
1st basement



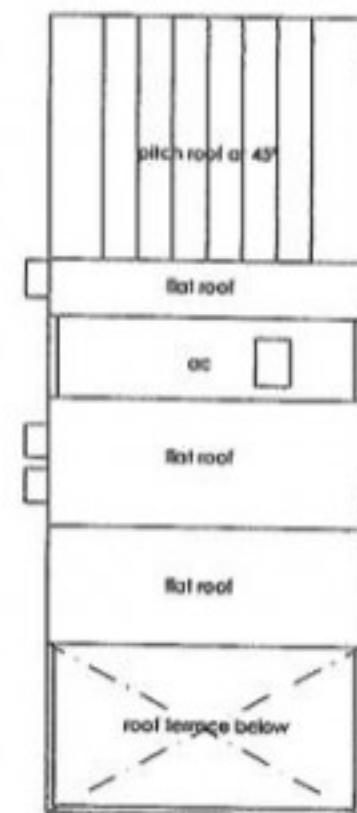
1st storey



2nd storey



attic



roof

* Area given by registered surveyor on 17 January 2013

