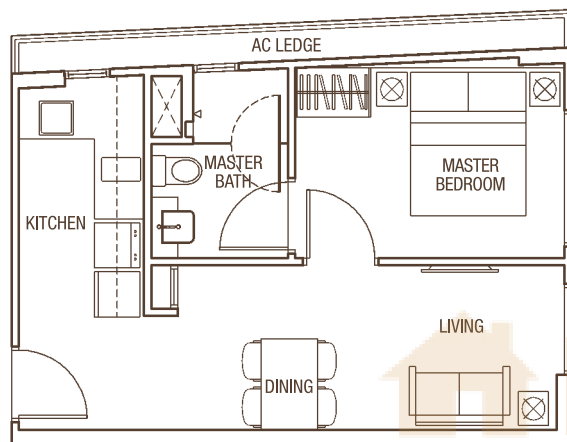


1-Bedroom Unit TYPE A1

39 sqm / 420 sqft
(Inclusive of 3.6 sqm / 39 sqft AC Ledge)

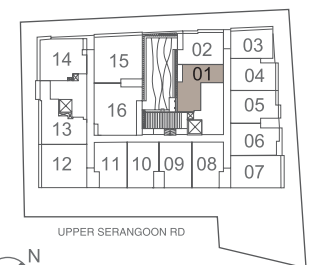
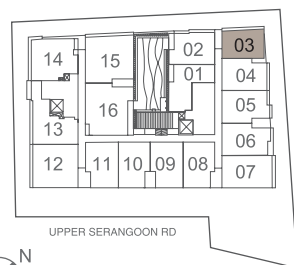
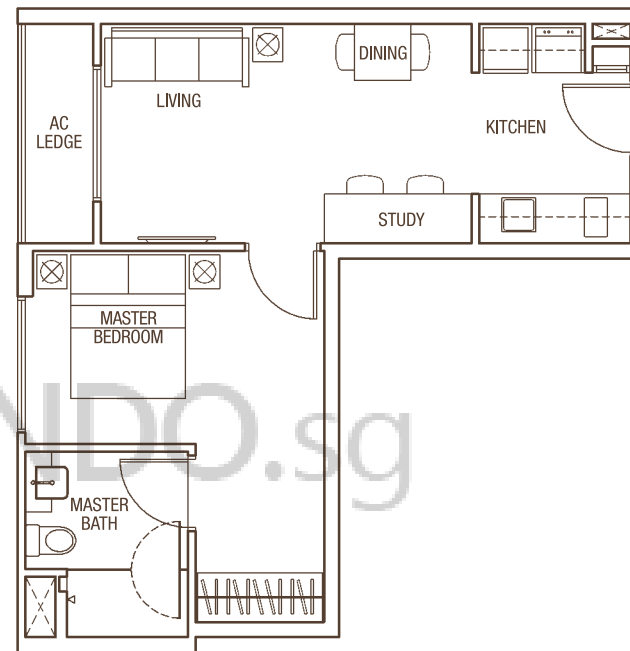
#03-03, #04-03 & #05-03



1-Bedroom Unit TYPE A2

45 sqm / 484 sqft
(Inclusive of 3 sqm / 32 sqft AC Ledge)

#03-01, #04-01 & #05-01

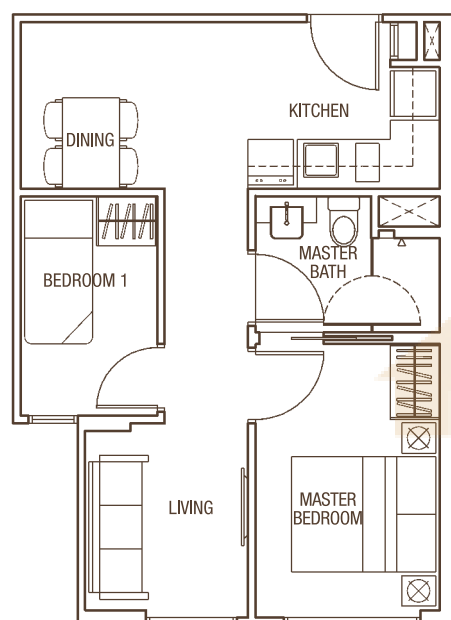


All plans are subject to change as may be approved by the relevant authorities. Indicated floor areas are approximate and subject to final survey.

2-Bedroom Unit TYPE B1-1G

45 sqm / 484 sqft
(Inclusive of 2 sqm / 22 sqft AC Ledge)

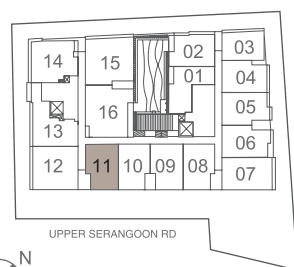
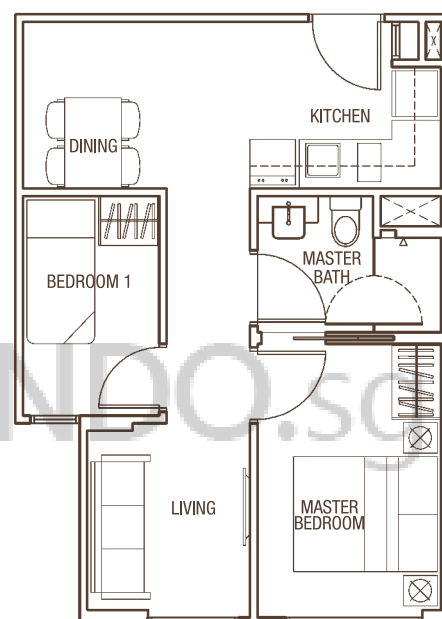
#03-11



2-Bedroom Unit TYPE B1-1

45 sqm / 484 sqft
(Inclusive of 2 sqm / 22 sqft AC Ledge)

#04-11

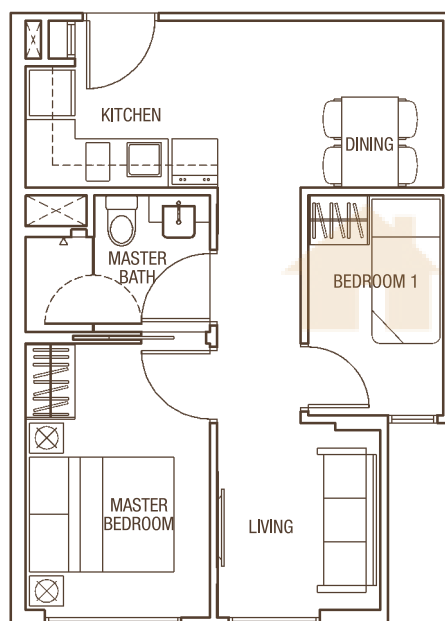


All plans are subject to change as may be approved by the relevant authorities. Indicated floor areas are approximate and subject to final survey.

2-Bedroom Unit TYPE B1-2

46 sqm / 495 sqft
(Inclusive of 3 sqm / 32 sqft AC Ledge)

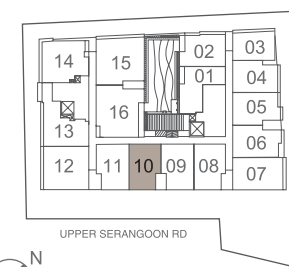
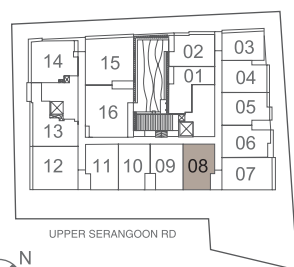
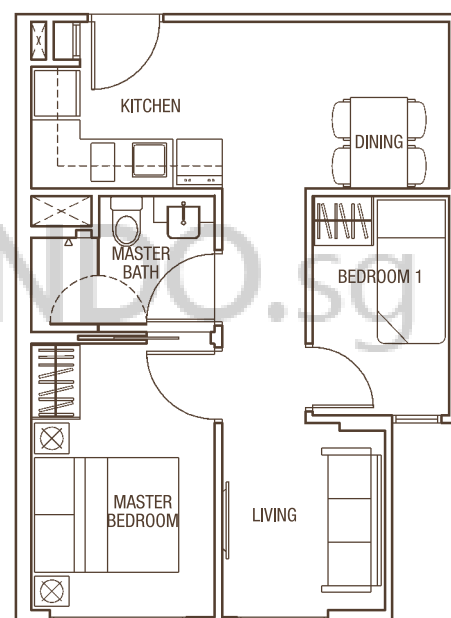
#03-08 & #04-08



2-Bedroom Unit TYPE B1-AG

45 sqm / 484 sqft
(Inclusive of 2 sqm / 22 sqft AC Ledge)

#03-10

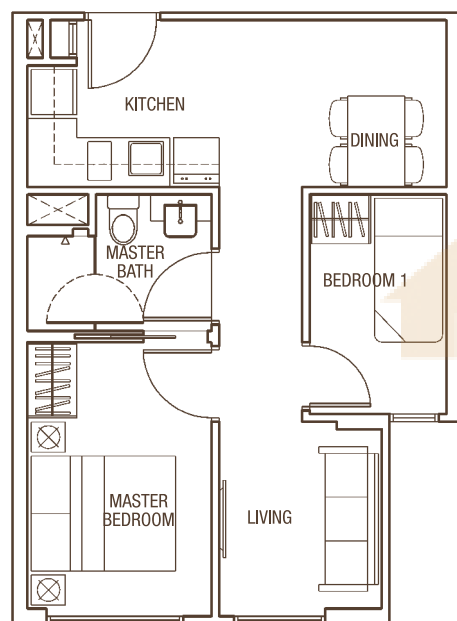


All plans are subject to change as may be approved by the relevant authorities. Indicated floor areas are approximate and subject to final survey.

2-Bedroom Unit TYPE B1-A

45 sqm / 484 sqft
(Inclusive of 2 sqm / 22 sqft AC Ledge)

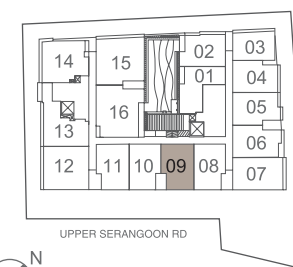
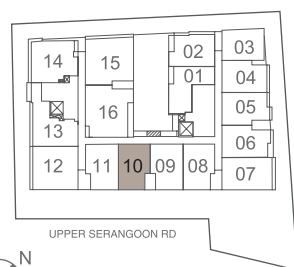
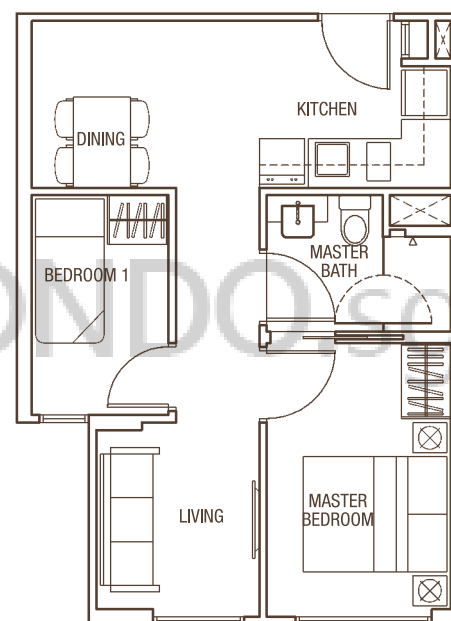
#04-10



2-Bedroom Unit TYPE B1-BG

45 sqm / 484 sqft
(Inclusive of 2 sqm / 22 sqft AC Ledge)

#03-09

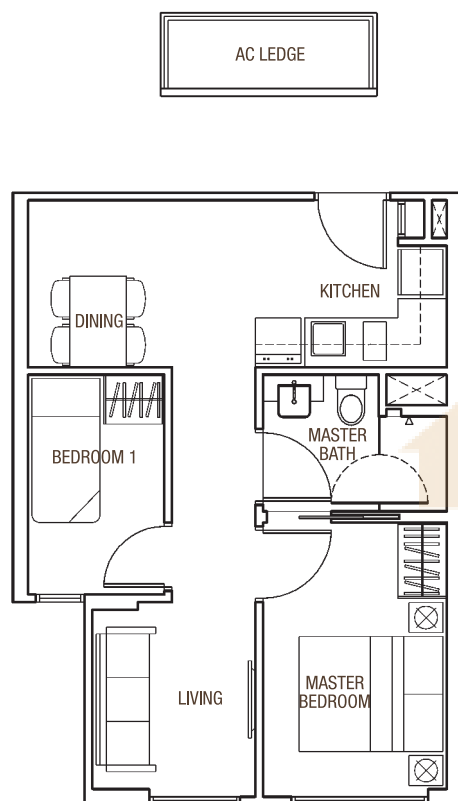


All plans are subject to change as may be approved by the relevant authorities. Indicated floor areas are approximate and subject to final survey.

2-Bedroom Unit TYPE B1-B

46 sqm / 495 sqft
(Inclusive of 3 sqm / 32 sqft AC Ledge)

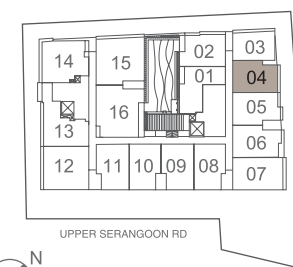
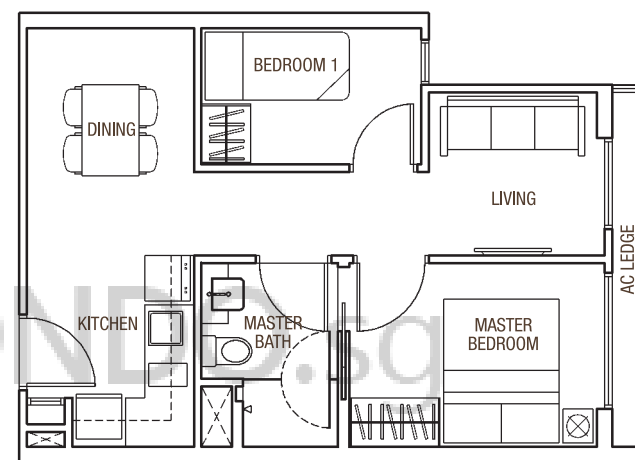
#04-09



2-Bedroom Unit TYPE B2

44 sqm / 474 sqft
(Inclusive of 2.5 sqm / 27 sqft AC Ledge)

#03-04 & #04-04

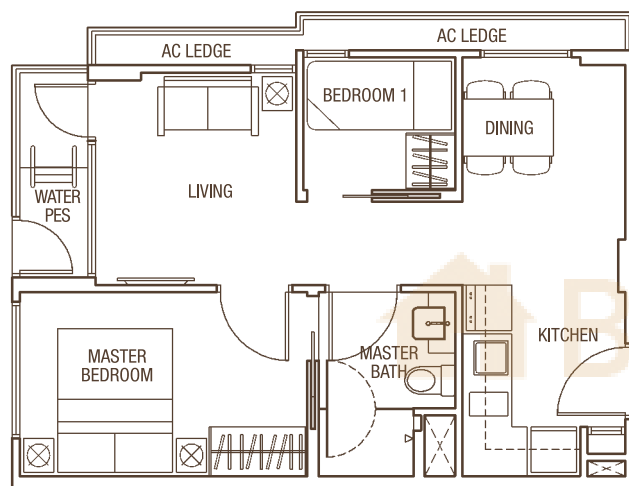


All plans are subject to change as may be approved by the relevant authorities. Indicated floor areas are approximate and subject to final survey.

2-Bedroom Unit TYPE B3G

48 sqm / 517 sqft
(Inclusive of 3.5 sqm / 38 sqft AC Ledge + 2.9 sqm / 31 sqft PES)

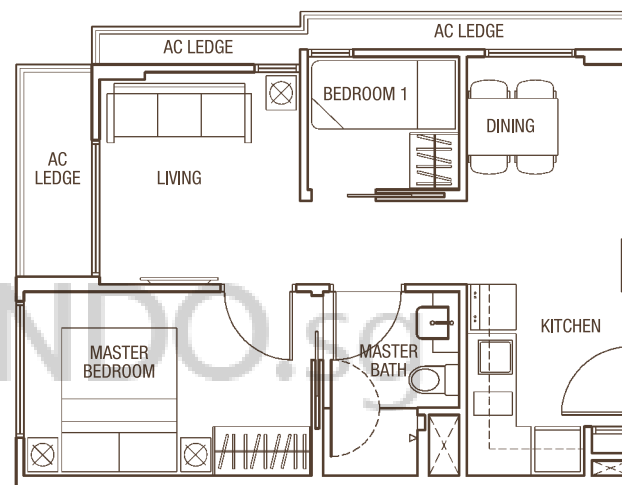
#03-02



2-Bedroom Unit TYPE B3

48 sqm / 517 sqft
(Inclusive of 6.4 sqm / 69 sqft AC Ledge)

#04-02

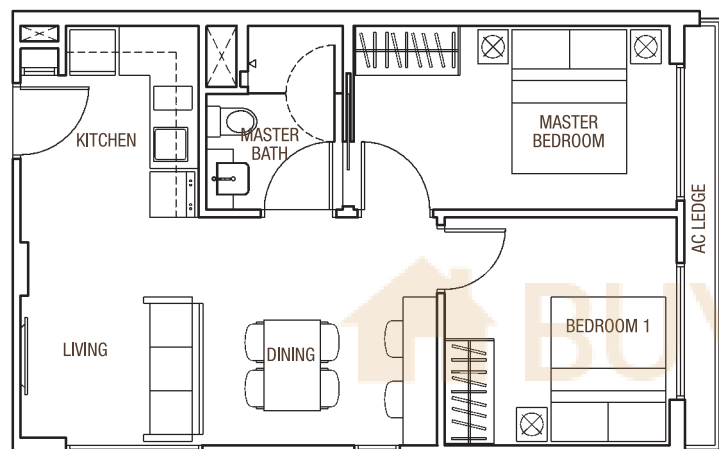


All plans are subject to change as may be approved by the relevant authorities. Indicated floor areas are approximate and subject to final survey.

2-Bedroom Unit TYPE B4

52 sqm / 560 sqft
(Inclusive of 3 sqm / 32 sqft AC Ledge)

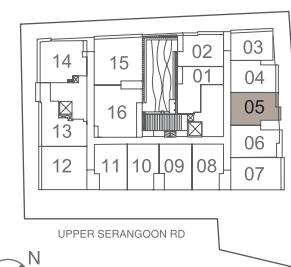
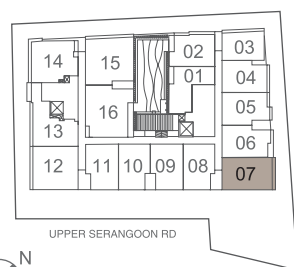
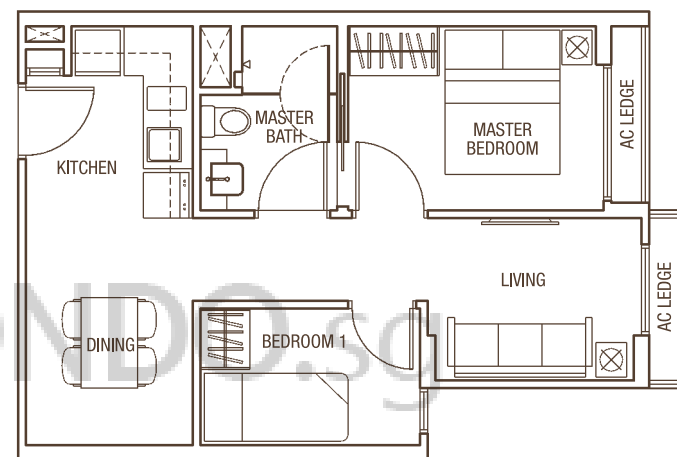
#03-07, #04-07 & #05-07



2-Bedroom Unit TYPE B5

45 sqm / 484 sqft
(Inclusive of 2.20 sqm / 24 sqft AC Ledge)

#03-05 & #04-05

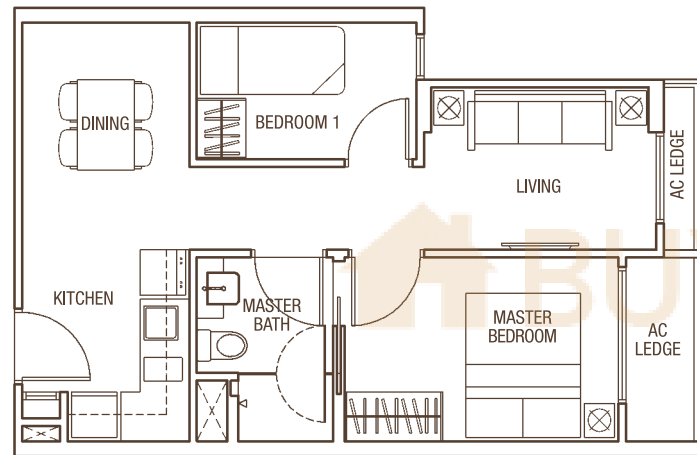


All plans are subject to change as may be approved by the relevant authorities. Indicated floor areas are approximate and subject to final survey.

2-Bedroom Unit TYPE B6

47 sqm / 506 sqft
(Inclusive of 3.5 sqm / 38 sqft AC Ledge)

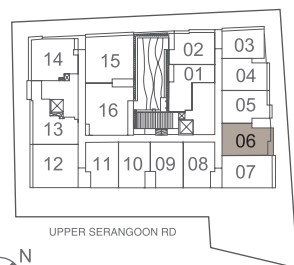
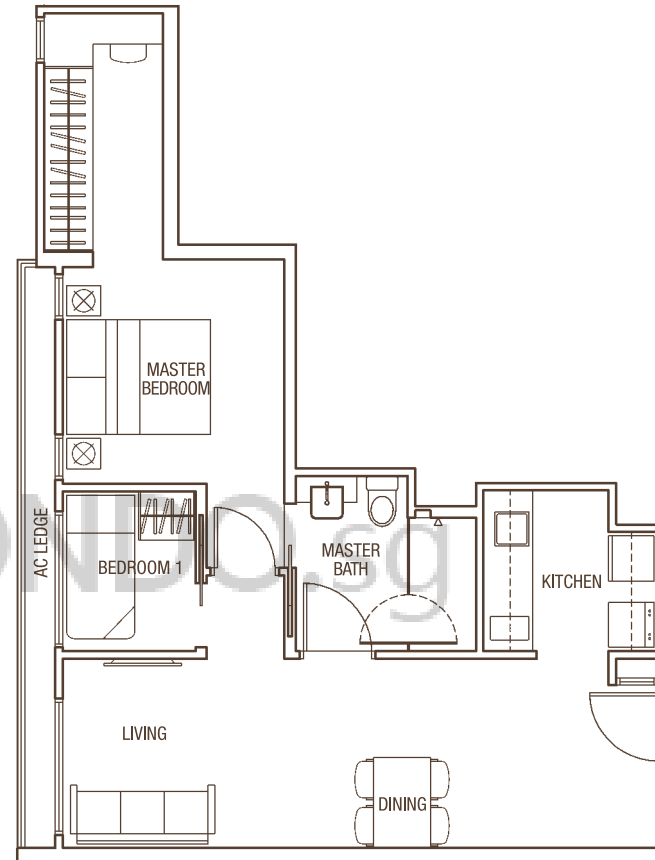
#03-06 & #04-06



2-Bedroom Unit TYPE B7

58 sqm / 624 sqft
(Inclusive of 4 sqm / 43 sqft AC Ledge)

#03-13 & #04-13

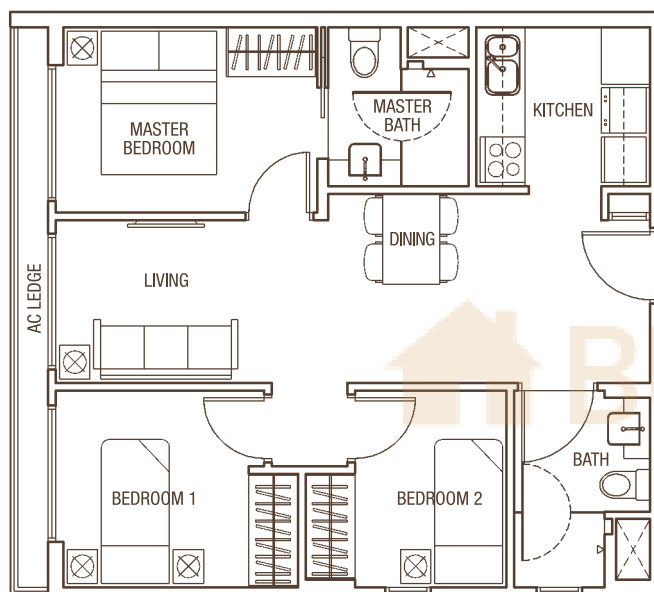


All plans are subject to change as may be approved by the relevant authorities. Indicated floor areas are approximate and subject to final survey.

3-Bedroom Unit TYPE C1

63 sqm / 678 sqft
(Inclusive of 3.9 sqm / 42 sqft AC Ledge)

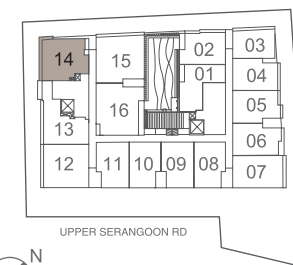
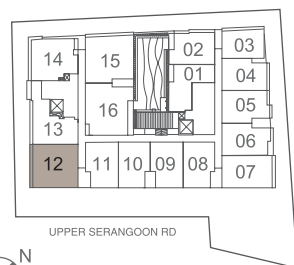
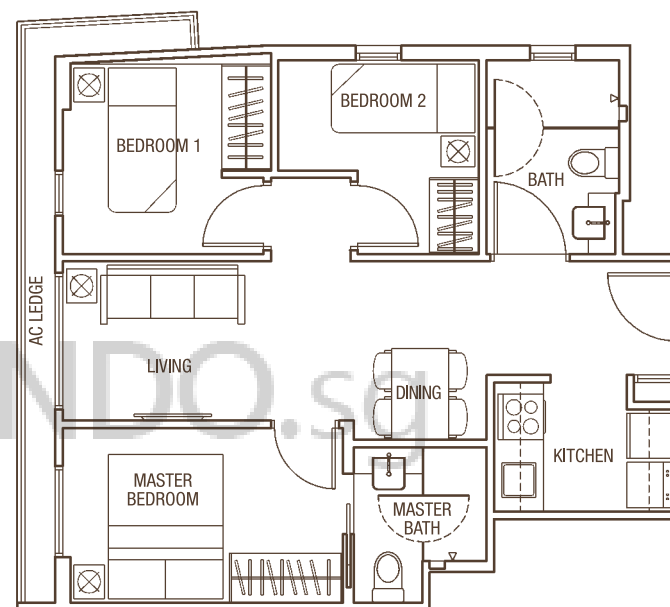
#03-12 & #04-12



3-Bedroom Unit TYPE C2

60 sqm / 646 sqft
(Inclusive of 4.7 sqm / 51 sqft AC Ledge)

#03-14 & #04-14

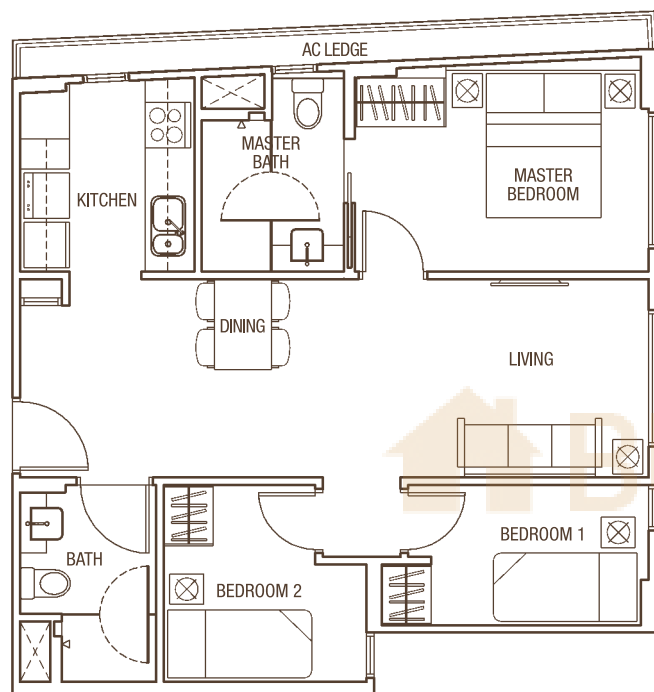


All plans are subject to change as may be approved by the relevant authorities. Indicated floor areas are approximate and subject to final survey.

3-Bedroom Unit TYPE D1

70 sqm / 753 sqft
(Inclusive of 4.5 sqm / 48 sqft AC Ledge)

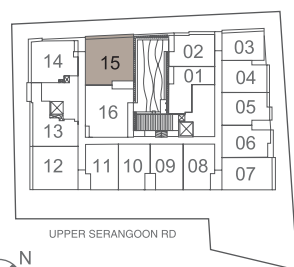
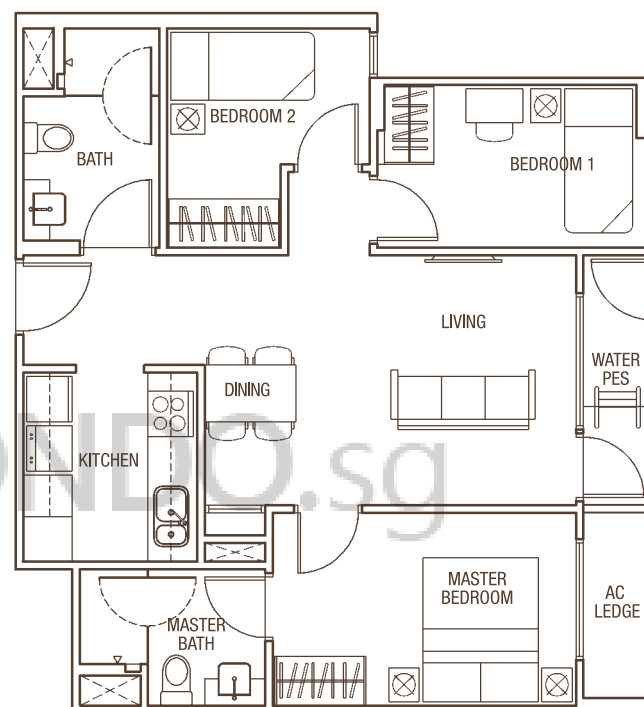
#03-15 & #04-15



3-Bedroom Unit TYPE D2G

71 sqm / 764 sqft
(Inclusive of 2.8 sqm / 30 sqft AC Ledge + 3.5 sqm / 38 sqft Water PES)

#03-16

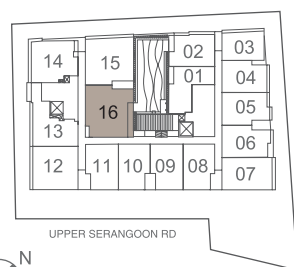
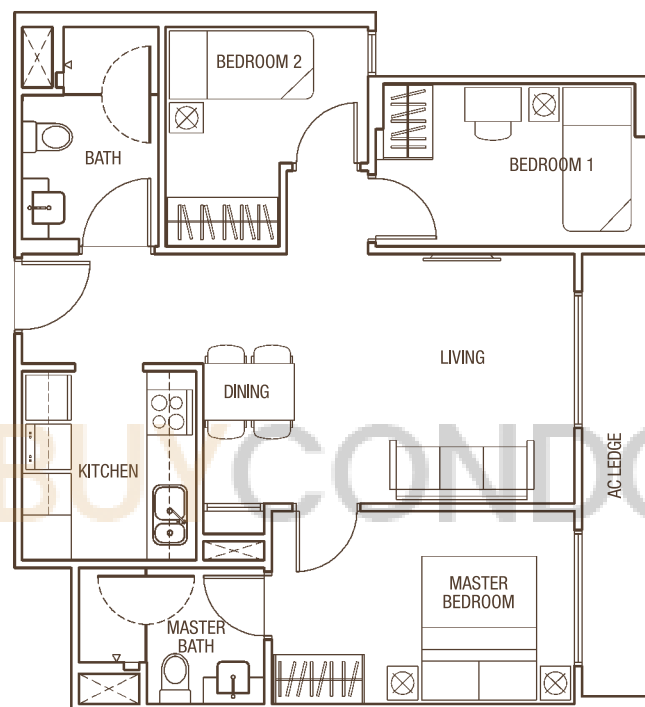


All plans are subject to change as may be approved by the relevant authorities. Indicated floor areas are approximate and subject to final survey.

3-Bedroom Unit TYPE D2

71 sqm / 764 sqft
(Inclusive of 6.3 sqm / 68 sqft AC Ledge)

#04-16



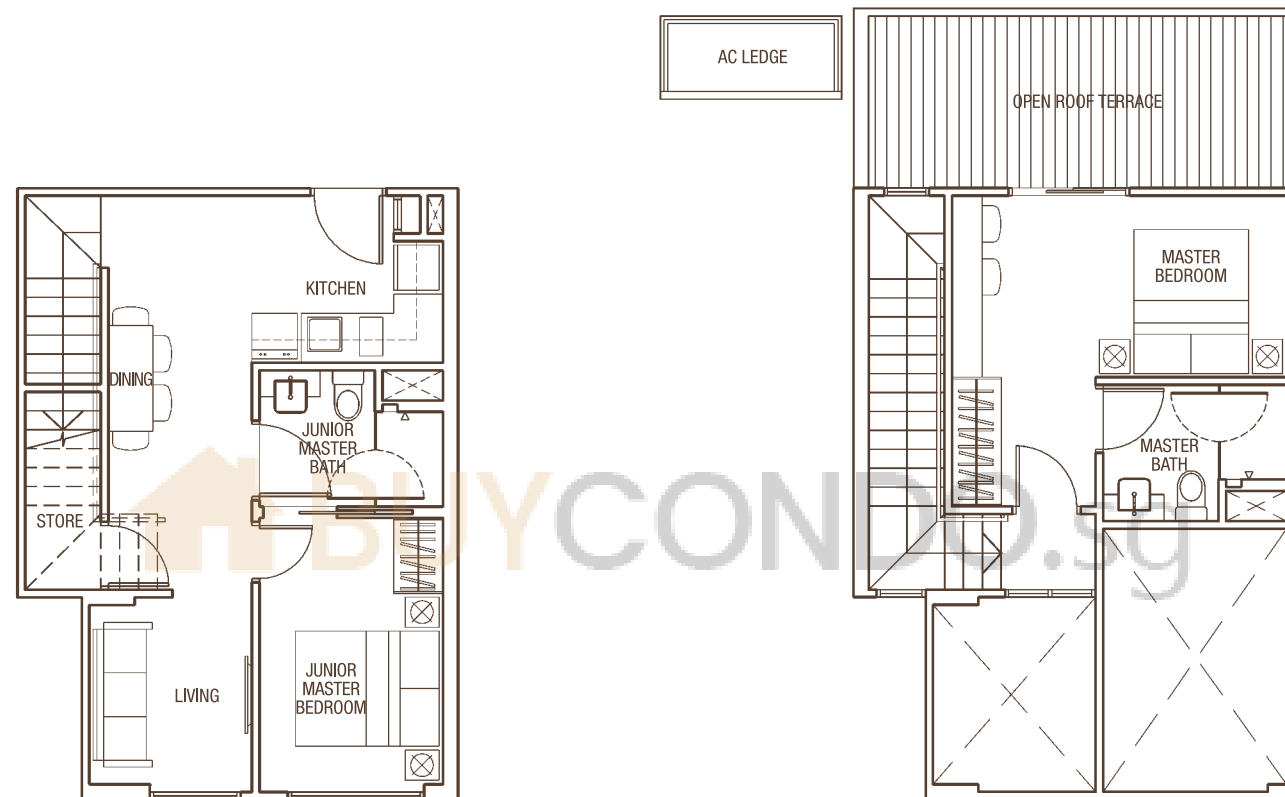
All plans are subject to change as may be approved by the relevant authorities. Indicated floor areas are approximate and subject to final survey.

2-Bedroom Unit TYPE B1-1P

101 sqm / 1,087 sqft

(Inclusive of 2 sqm / 22 sqft AC Ledge + 13.5 sqm / 145 sqft Open Roof Terrace + 15 sqm / 161 sqft Strata Void)

#05-11



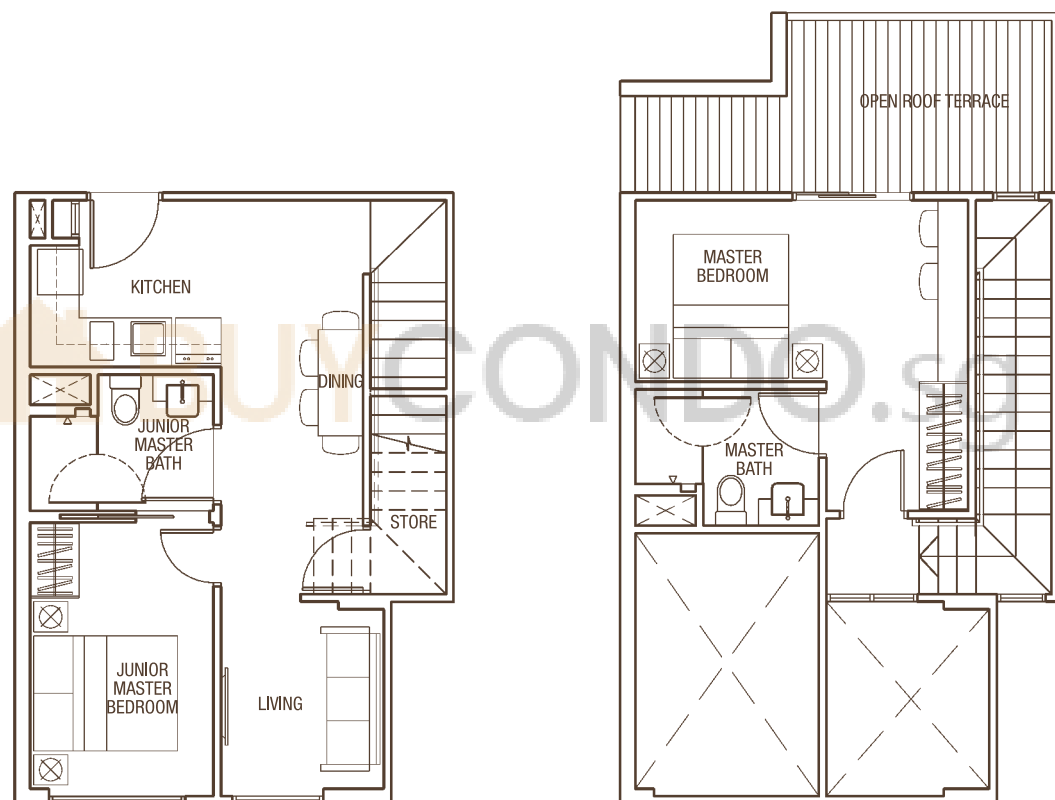
All plans are subject to change as may be approved by the relevant authorities. Indicated floor areas are approximate and subject to final survey.

2-Bedroom Unit TYPE B1-2P

100 sqm / 1,076 sqft

(Inclusive of 3 sqm / 32 sqft AC Ledge + 11.5 sqm / 124 sqft Open Roof Terrace + 15 sqm / 161 sqft Strata Void)

#05-08



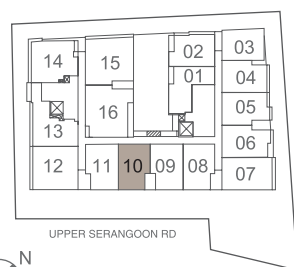
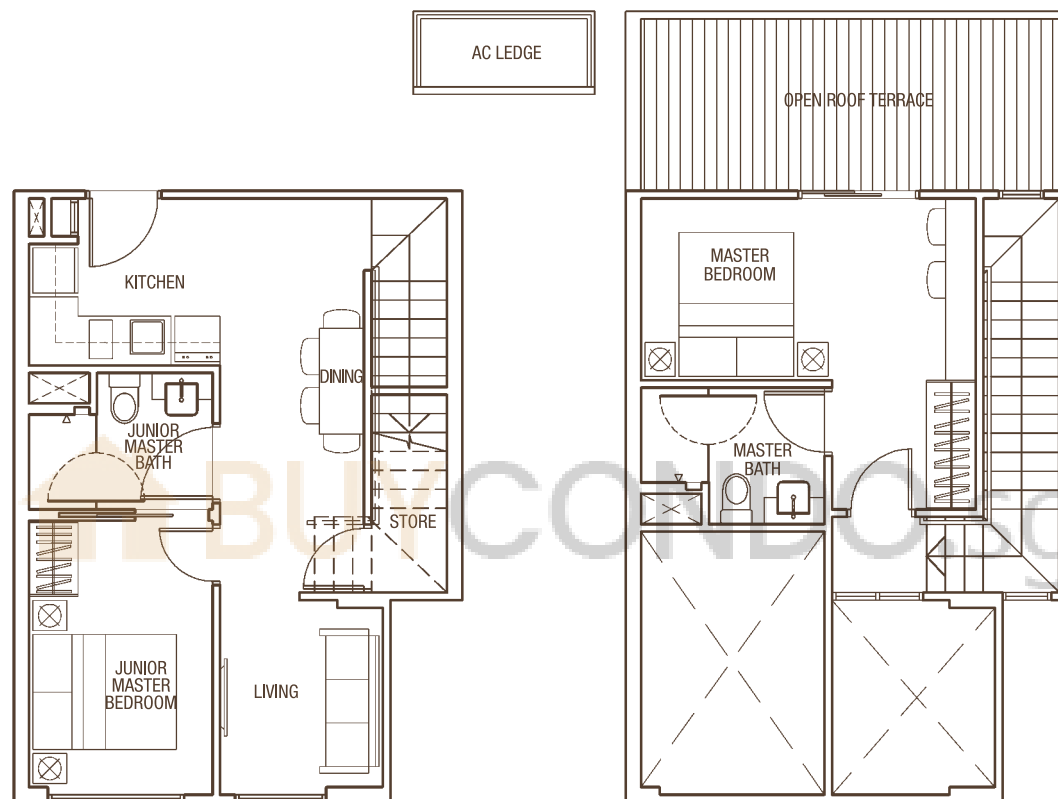
All plans are subject to change as may be approved by the relevant authorities. Indicated floor areas are approximate and subject to final survey.

2-Bedroom Unit TYPE B1-AP

101 sqm / 1,087 sqft

(Inclusive of 2 sqm / 22 sqft AC Ledge + 13.5 sqm / 145 sqft Open Roof Terrace + 15 sqm / 161 sqft Strata Void)

#05-10



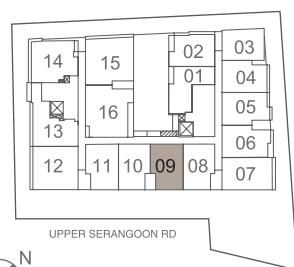
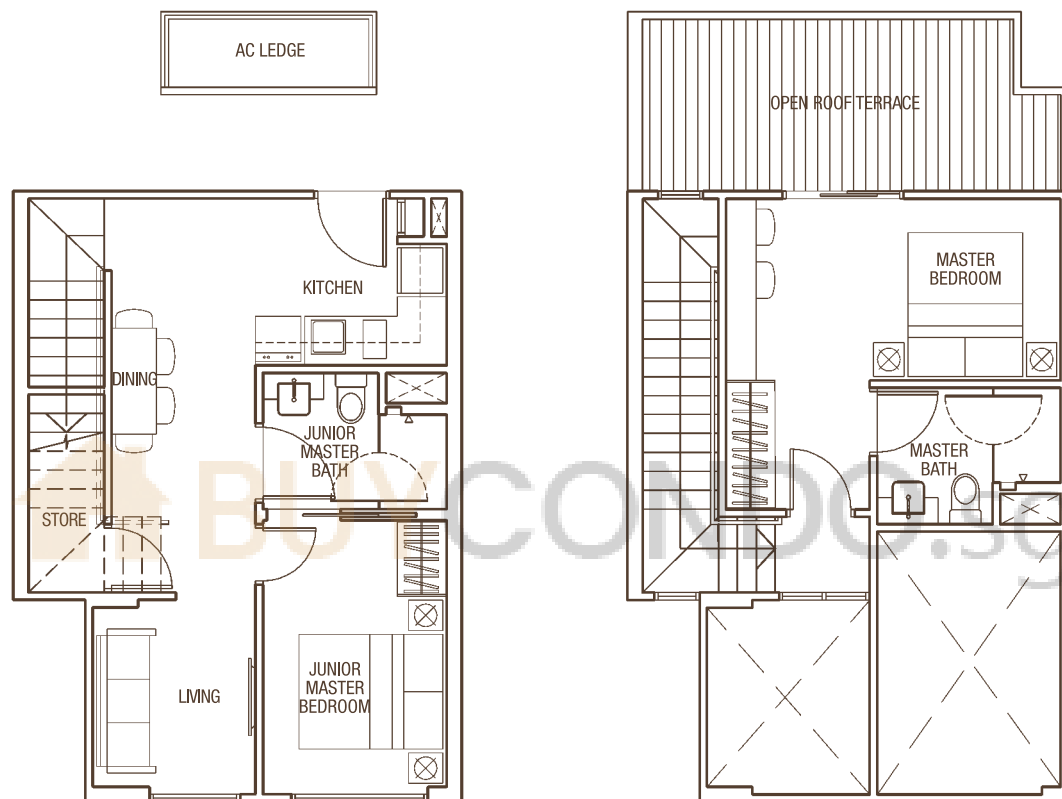
All plans are subject to change as may be approved by the relevant authorities. Indicated floor areas are approximate and subject to final survey.

2-Bedroom Unit TYPE B1-BP

101 sqm / 1,087 sqft

(Inclusive of 3 sqm / 32 sqft AC Ledge + 12.5 sqm / 135 sqft Open Roof Terrace + 15 sqm / 161 sqft Strata Void)

#05-09



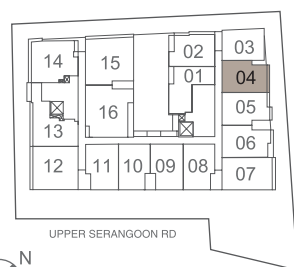
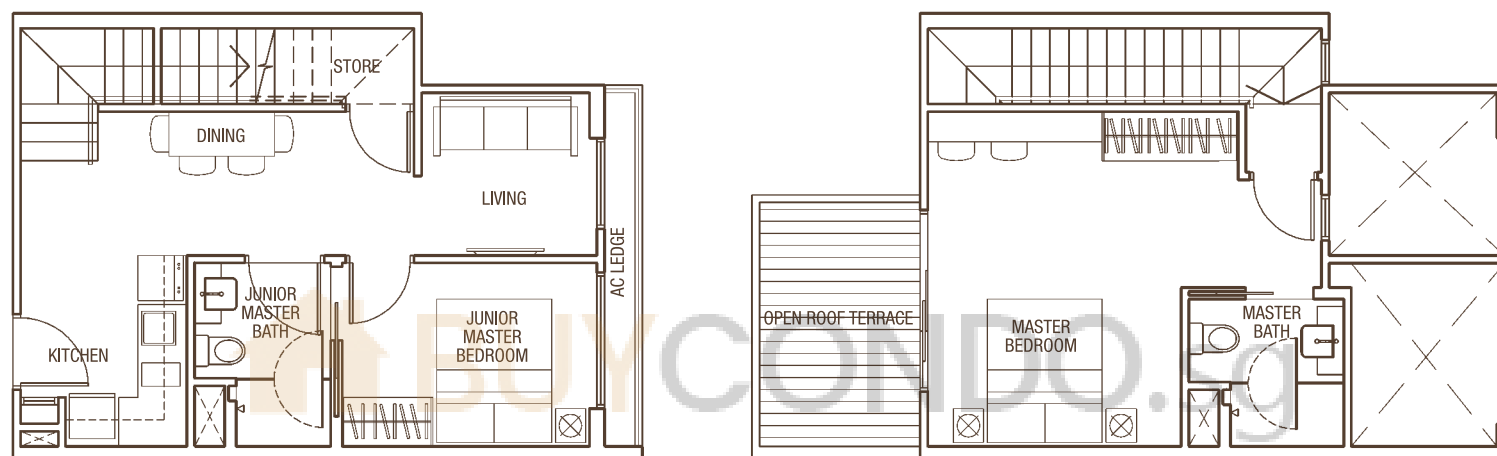
All plans are subject to change as may be approved by the relevant authorities. Indicated floor areas are approximate and subject to final survey.

2-Bedroom Unit TYPE B2P

93 sqm / 1,001 sqft

(Inclusive of 2.5 sqm / 27 sqft AC Ledge + 7.5 sqm / 81 sqft Open Roof Terrace + 11 sqm / 118 sqft Strata Void)

#05-04



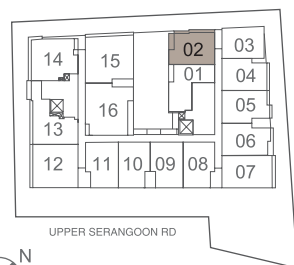
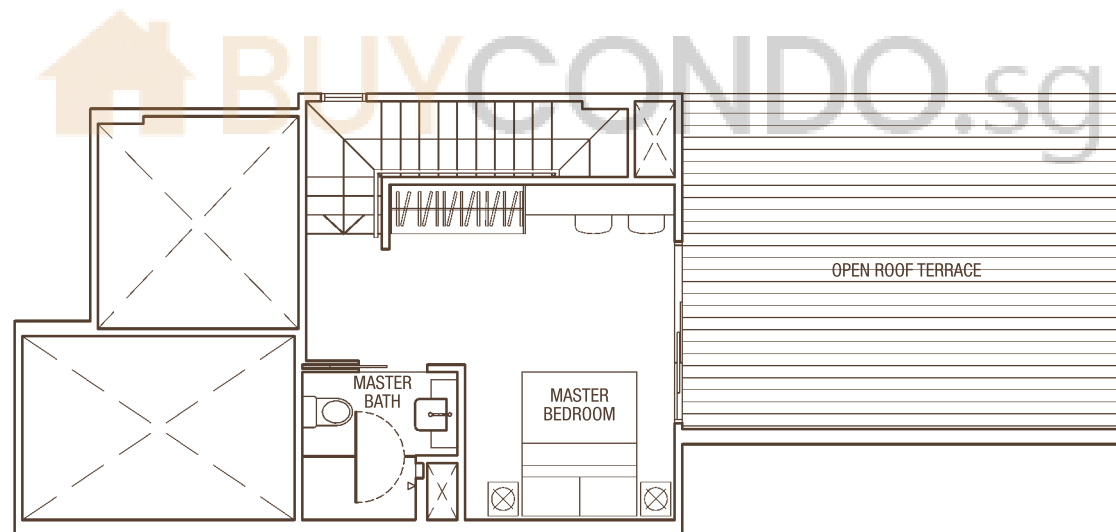
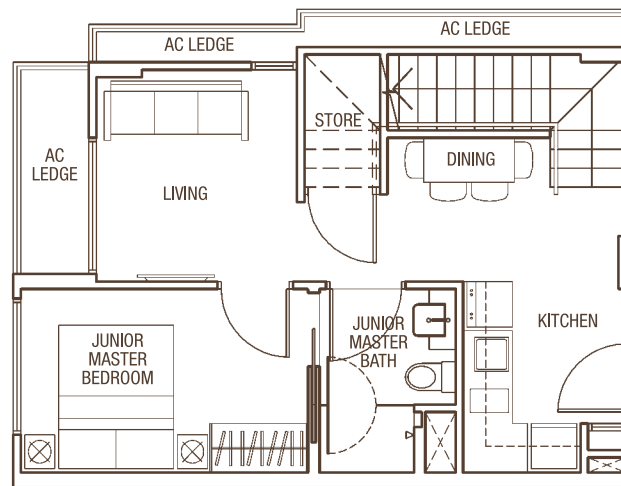
All plans are subject to change as may be approved by the relevant authorities. Indicated floor areas are approximate and subject to final survey.

2-Bedroom Unit TYPE B3P

119 sqm / 1,281 sqft

(Inclusive of 6.5 sqm / 70 sqft AC Ledge + 26 sqm / 280 sqft Open Roof Terrace + 18 sqm / 194 sqft Strata Void)

#05-02



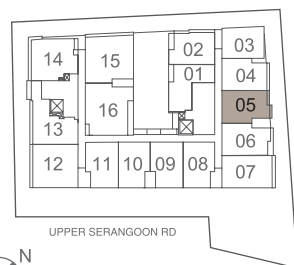
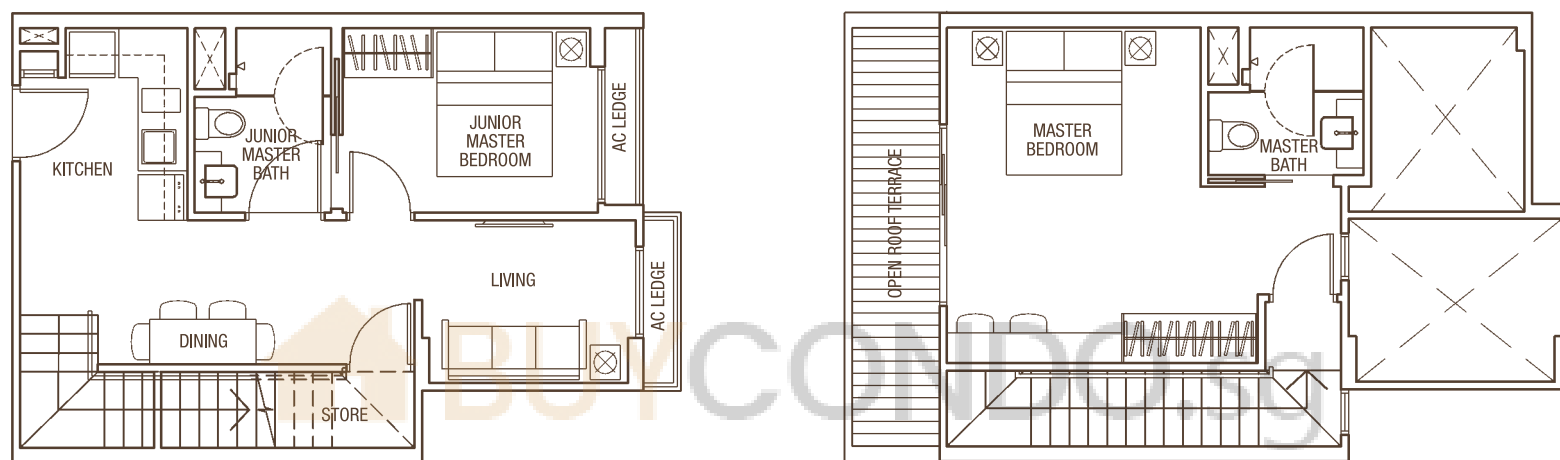
All plans are subject to change as may be approved by the relevant authorities. Indicated floor areas are approximate and subject to final survey.

2-Bedroom Unit TYPE B5P

95 sqm / 1,023 sqft

(Inclusive of 2.2 sqm / 24 sqft AC Ledge + 7.3 sqm / 79 sqft Open Roof Terrace + 12 sqm / 129 sqft Strata Void)

#05-05



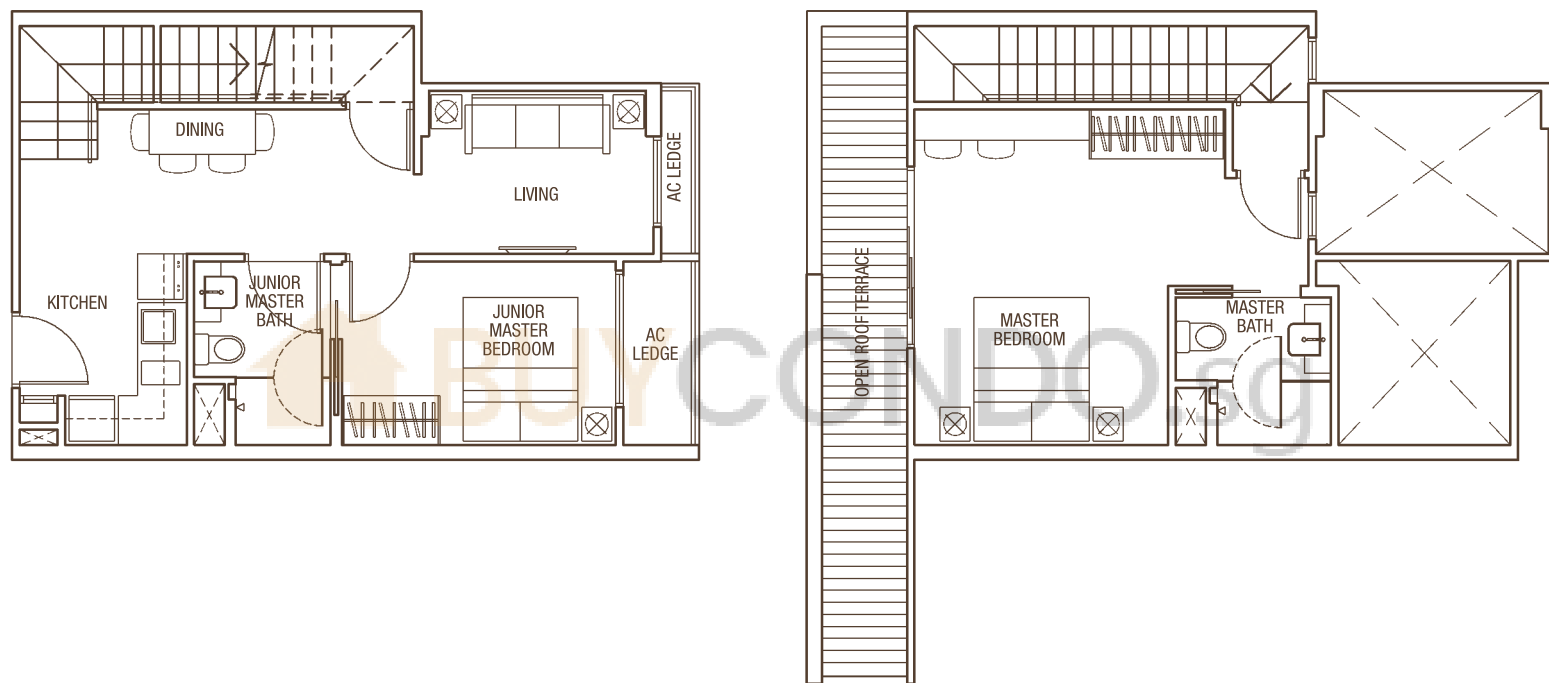
All plans are subject to change as may be approved by the relevant authorities. Indicated floor areas are approximate and subject to final survey.

2-Bedroom Unit TYPE B6P

102 sqm / 1,098 sqft

(Inclusive of 3.5 sqm / 38 sqft AC Ledge + 11.3 sqm / 122 sqft Open Roof Terrace + 13 sqm / 140 sqft Strata Void)

#05-06



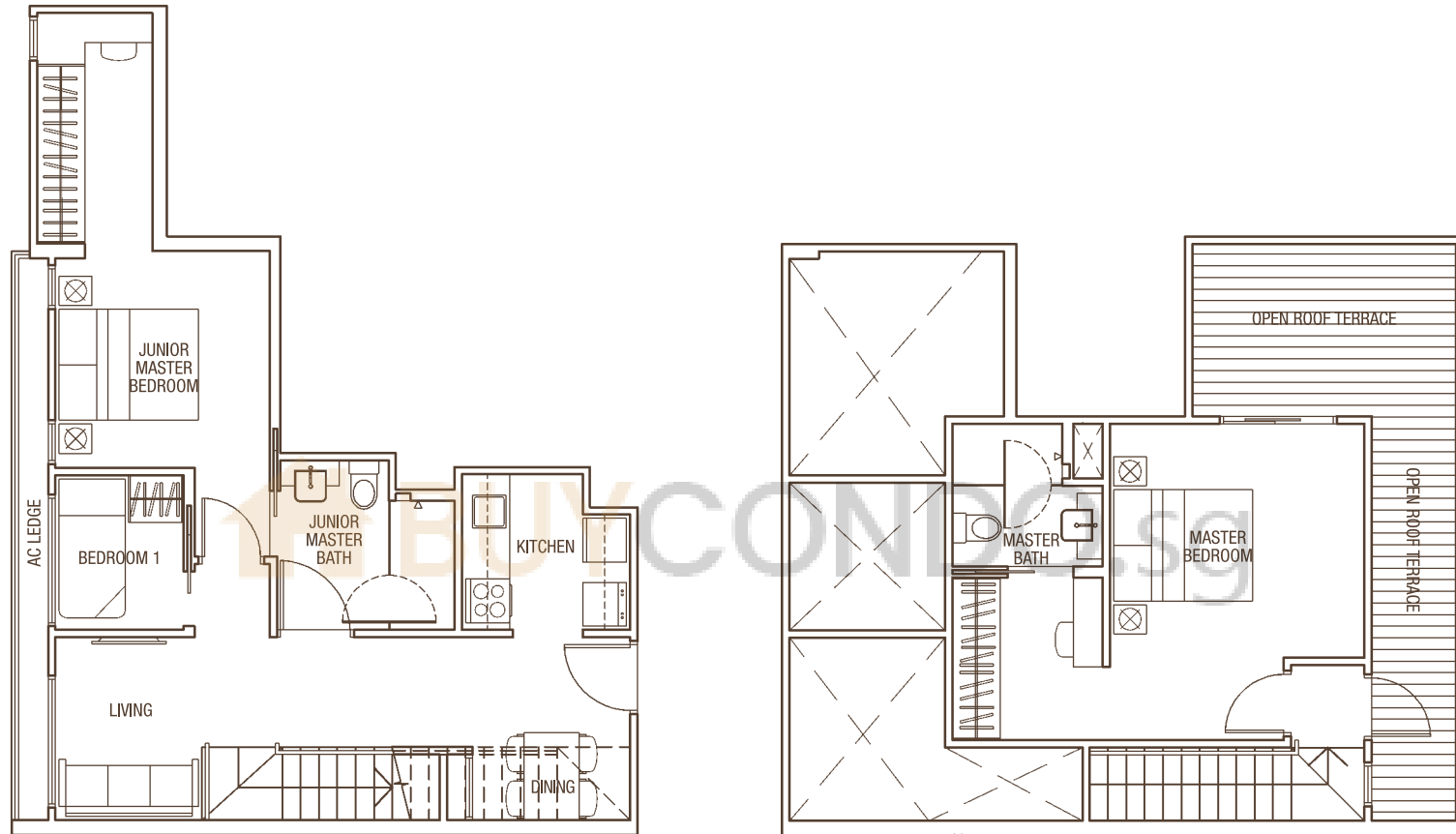
All plans are subject to change as may be approved by the relevant authorities. Indicated floor areas are approximate and subject to final survey.

3-Bedroom Unit TYPE B7P

126 sqm / 1,356 sqft

(Inclusive of 4 sqm / 43 sqft AC Ledge + 16.8 sqm / 181 sqft Open Roof Terrace + 22 sqm / 237 sqft Strata Void)

#05-13



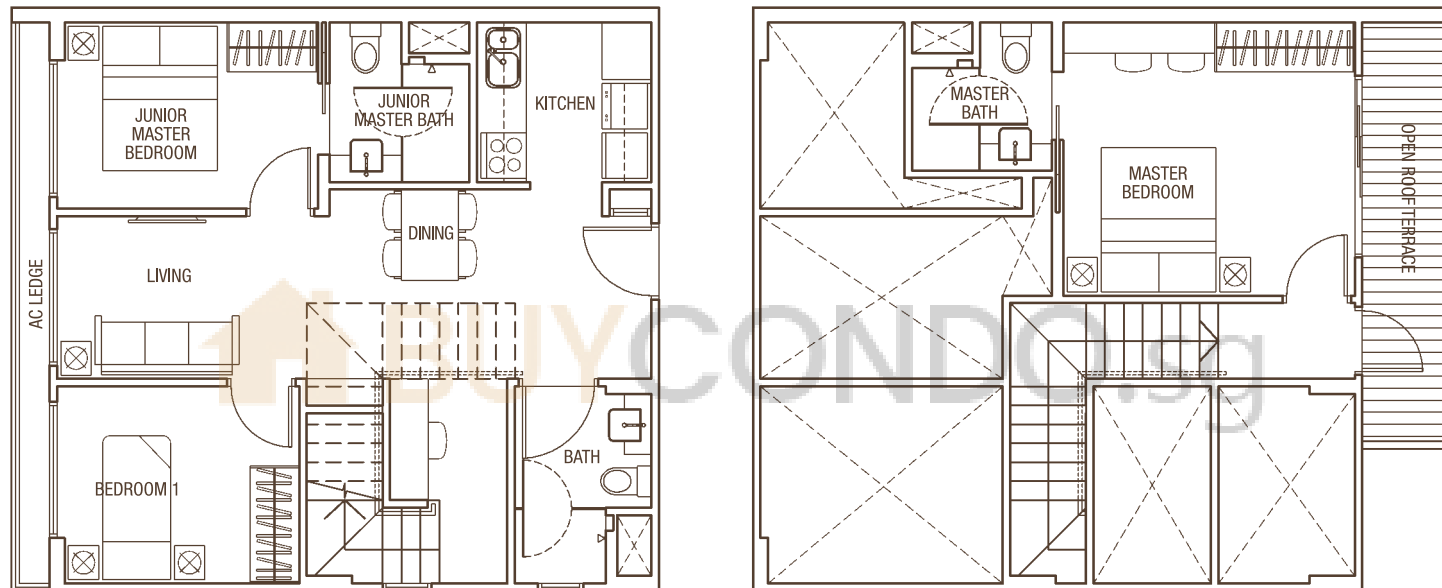
All plans are subject to change as may be approved by the relevant authorities. Indicated floor areas are approximate and subject to final survey.

3-Bedroom Unit TYPE C1P

130 sqm / 1,399 sqft

(Inclusive of 3.9 sqm / 42 sqft AC Ledge + 7.5 sqm / 81 sqft Open Roof Terrace + 33 sqm / 355 sqft Strata Void)

#05-12



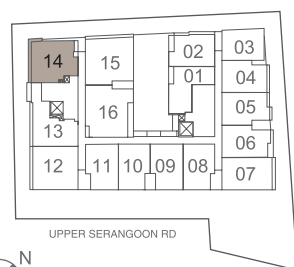
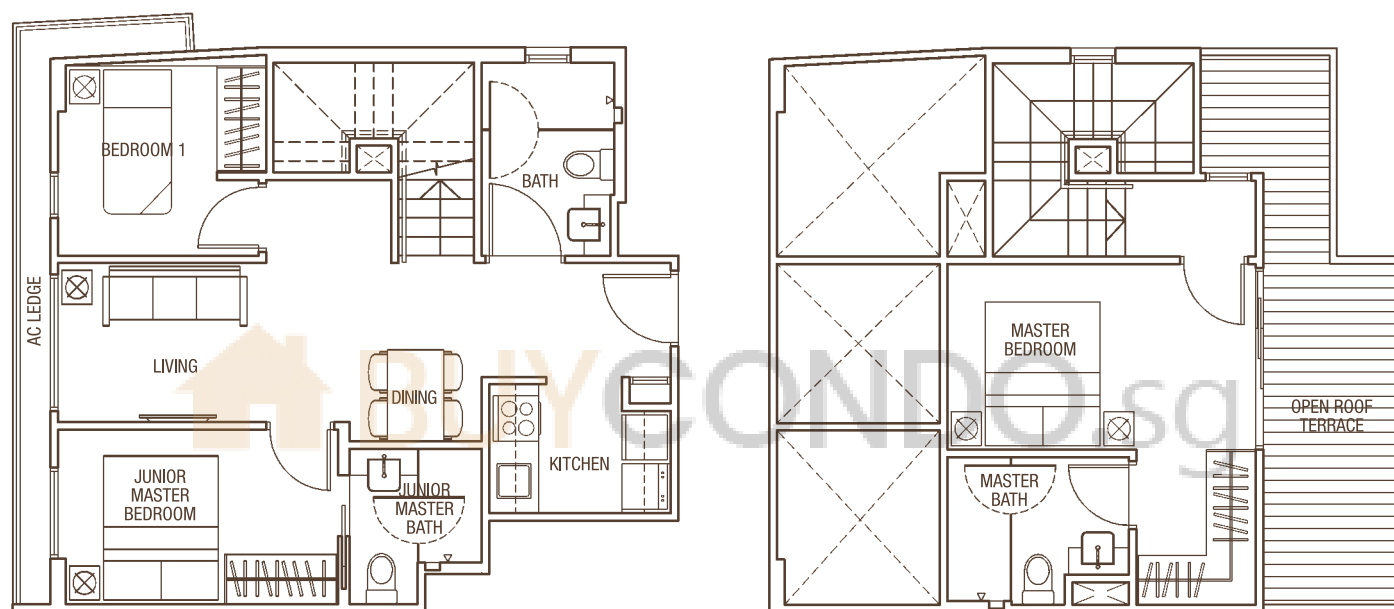
All plans are subject to change as may be approved by the relevant authorities. Indicated floor areas are approximate and subject to final survey.

3-Bedroom Unit TYPE C2P

115 sqm / 1,238 sqft

(Inclusive of 4.7 sqm / 51 sqft AC Ledge + 11 sqm / 118 sqft Open Roof Terrace + 17 sqm / 183 sqft Strata Void)

#05-14



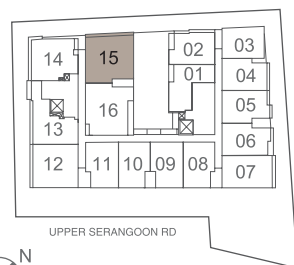
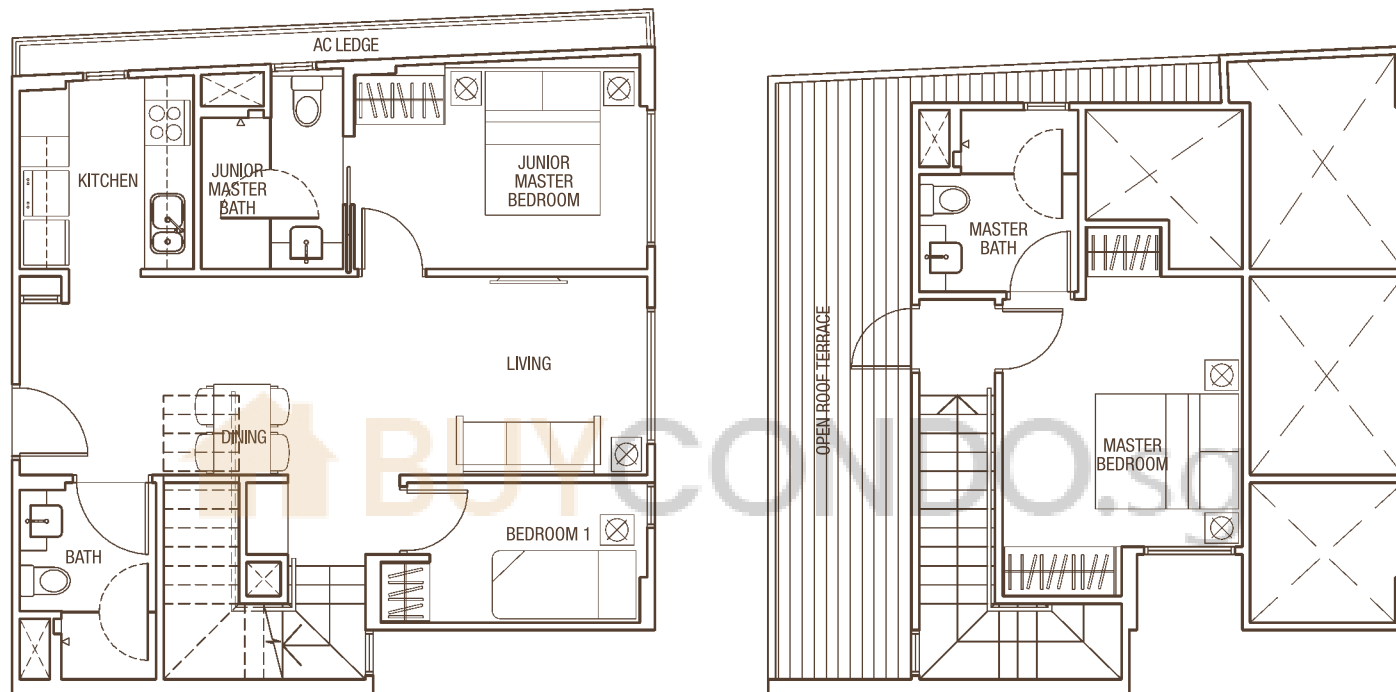
All plans are subject to change as may be approved by the relevant authorities. Indicated floor areas are approximate and subject to final survey.

3-Bedroom Unit TYPE D1P

134 sqm / 1,442 sqft

(Inclusive of 4.5 sqm / 48 sqft AC Ledge + 17.5 sqm / 188 sqft Open Roof Terrace + 20 sqm / 215 sqft Strata Void)

#05-15



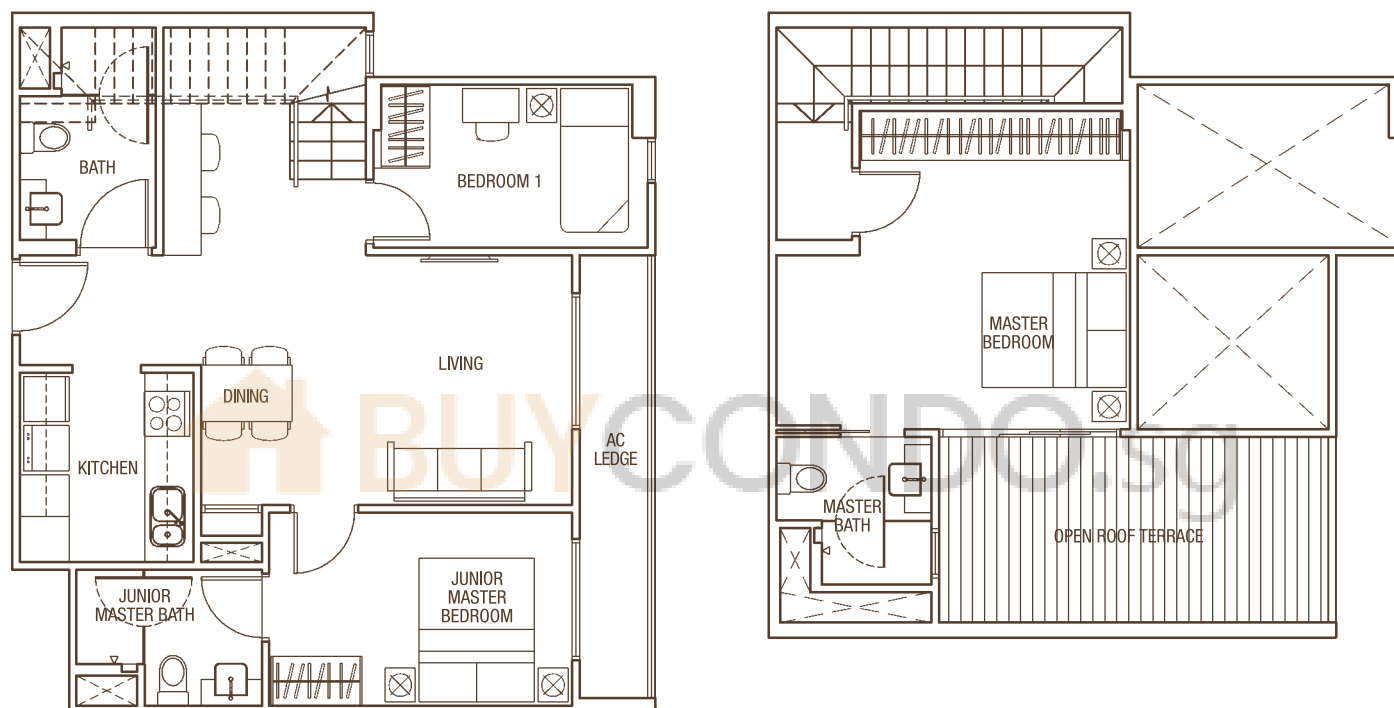
All plans are subject to change as may be approved by the relevant authorities. Indicated floor areas are approximate and subject to final survey.

3-Bedroom Unit TYPE D2P

129 sqm / 1,389 sqft

(Inclusive of 6.3 sqm / 68 sqft AC Ledge + 13.6 sqm / 146 sqft Open Roof Terrace + 15 sqm / 161 sqft Strata Void)

#05-16



All plans are subject to change as may be approved by the relevant authorities. Indicated floor areas are approximate and subject to final survey.