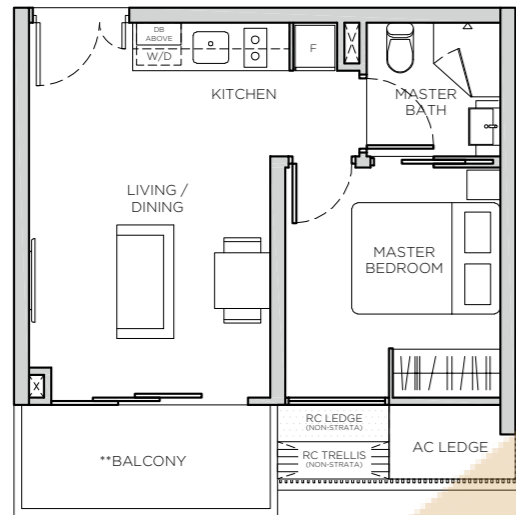
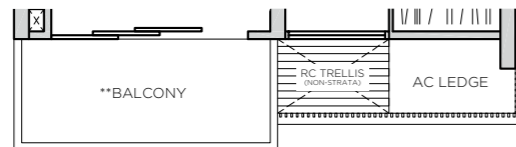


1 BEDROOM TYPE A1

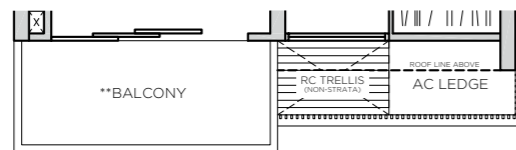
AREA : 42sqm / 452sqft



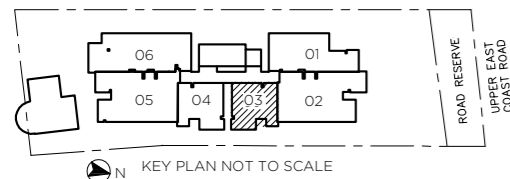
UNIT: #02-03



UNIT: #03-03
#04-03



UNIT: #05-03

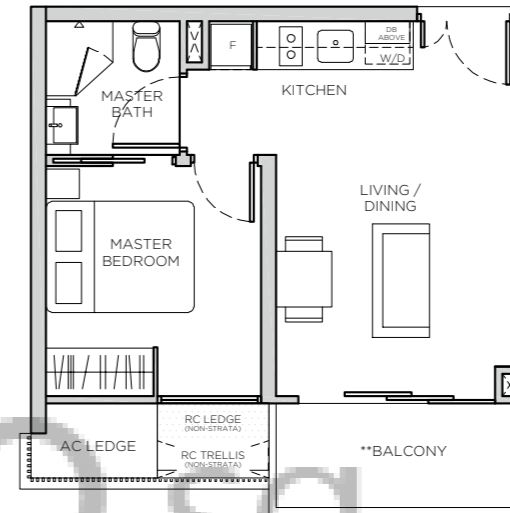


KEY PLAN NOT TO SCALE

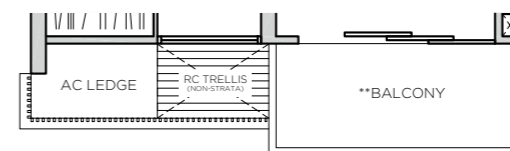
** The Balcony shall not be enclosed. Only URA approved balcony screen are to be used. For an illustration of the approved balcony screen, please refer to page 41 of this brochure.
Note: Areas include A/C ledge, balcony, private roof terrace (open to sky) and strata void where applicable. Orientations and facings will differ depending on the unit you are purchasing, please refer to the key plan. Plans are not to scale and subject to change as may be required or approved by the relevant authorities. All areas are subject to final survey.

1 BEDROOM TYPE A1M

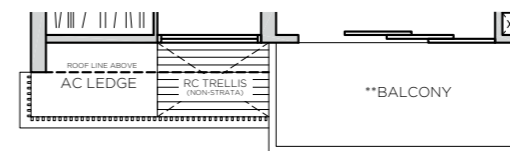
AREA : 42sqm / 452sqft



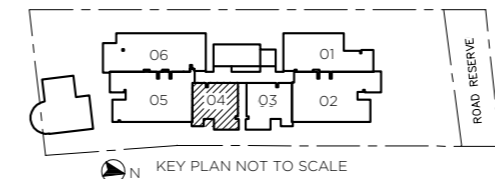
UNIT: #02-04



UNIT: #03-04
#04-04



UNIT: #05-04



KEY PLAN NOT TO SCALE

** The Balcony shall not be enclosed. Only URA approved balcony screen are to be used. For an illustration of the approved balcony screen, please refer to page 41 of this brochure.
Note: Areas include A/C ledge, balcony, private roof terrace (open to sky) and strata void where applicable. Orientations and facings will differ depending on the unit you are purchasing, please refer to the key plan. Plans are not to scale and subject to change as may be required or approved by the relevant authorities. All areas are subject to final survey.

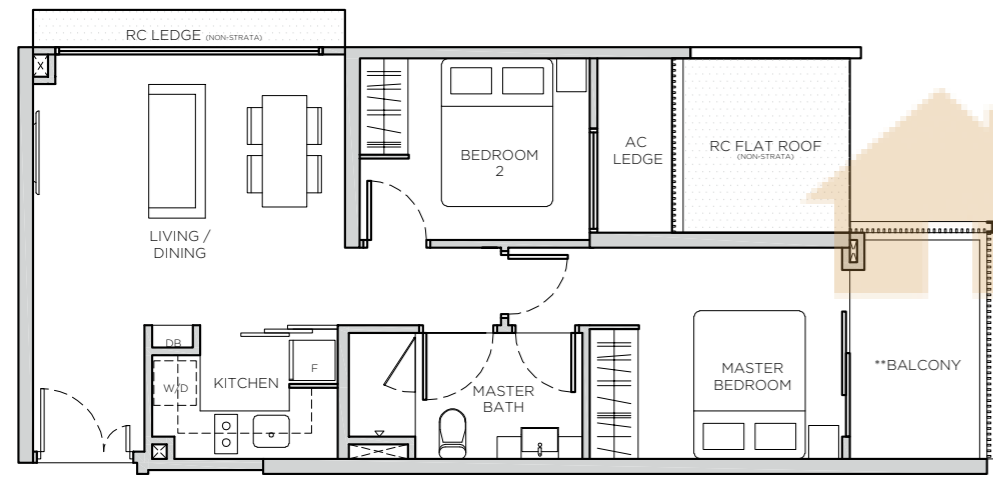
2 BEDROOM TYPE B1

AREA : 62sqm / 667sqft

3 BEDROOM TYPE C1

AREA : 84sqm / 904sqft

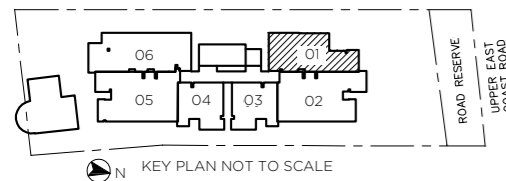
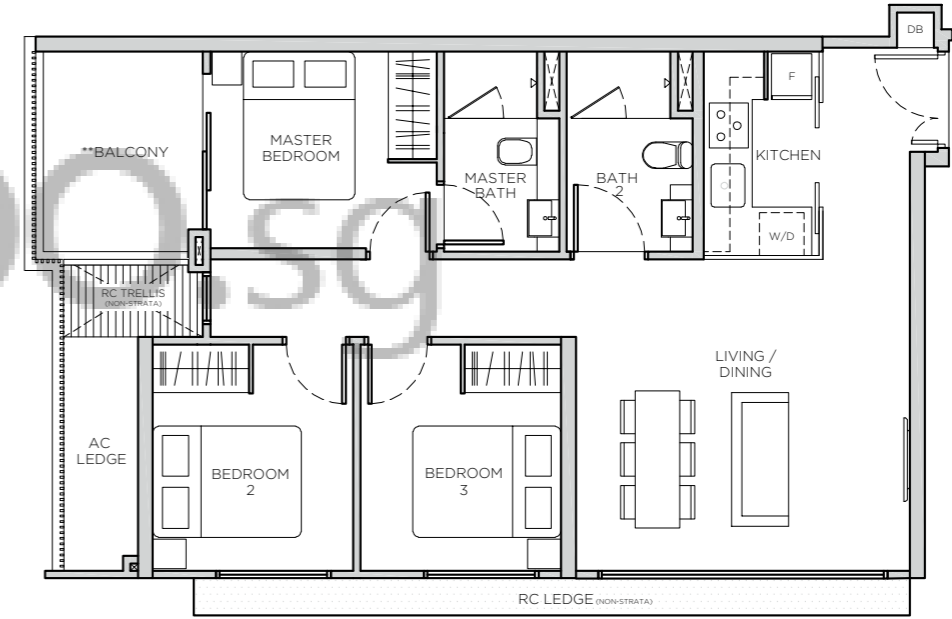
UNIT : #02-05 | #03-05



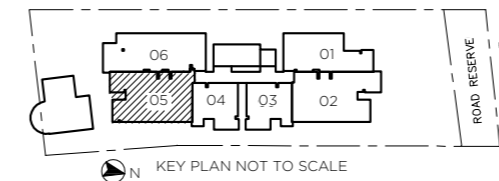
UNIT: #02-01



UNIT: #03-01
#04-01



** The Balcony shall not be enclosed. Only URA approved balcony screen are to be used. For an illustration of the approved balcony screen, please refer to page 41 of this brochure.
 Note: Areas include A/C ledge, balcony, private roof terrace (open to sky) and strata void where applicable. Orientations and facings will differ depending on the unit you are purchasing, please refer to the key plan. Plans are not to scale and subject to change as may be required or approved by the relevant authorities. All areas are subject to final survey.



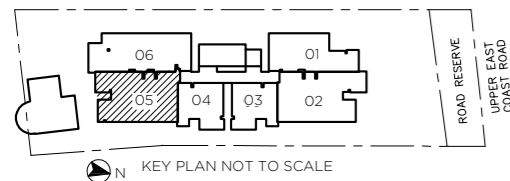
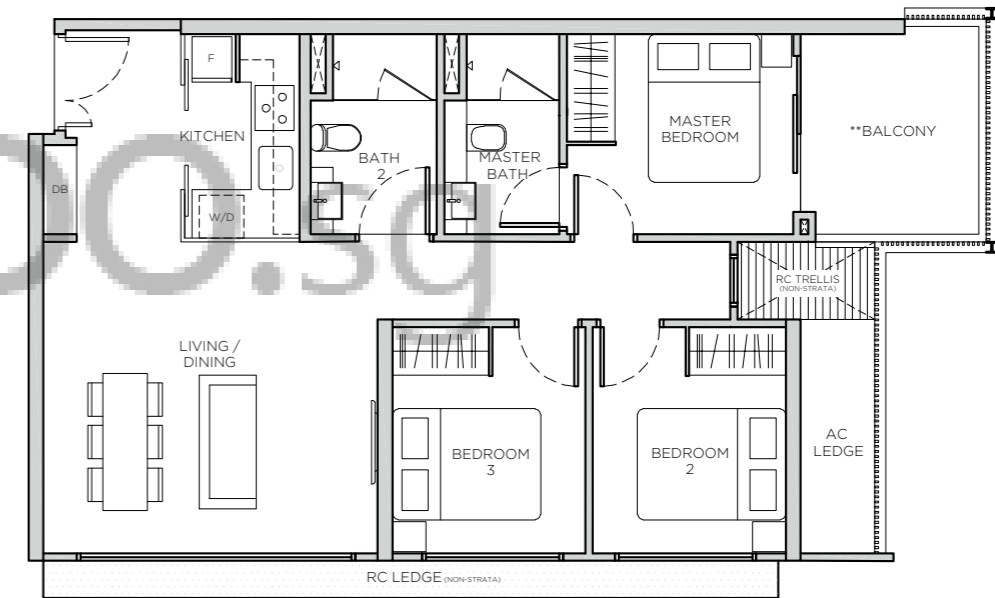
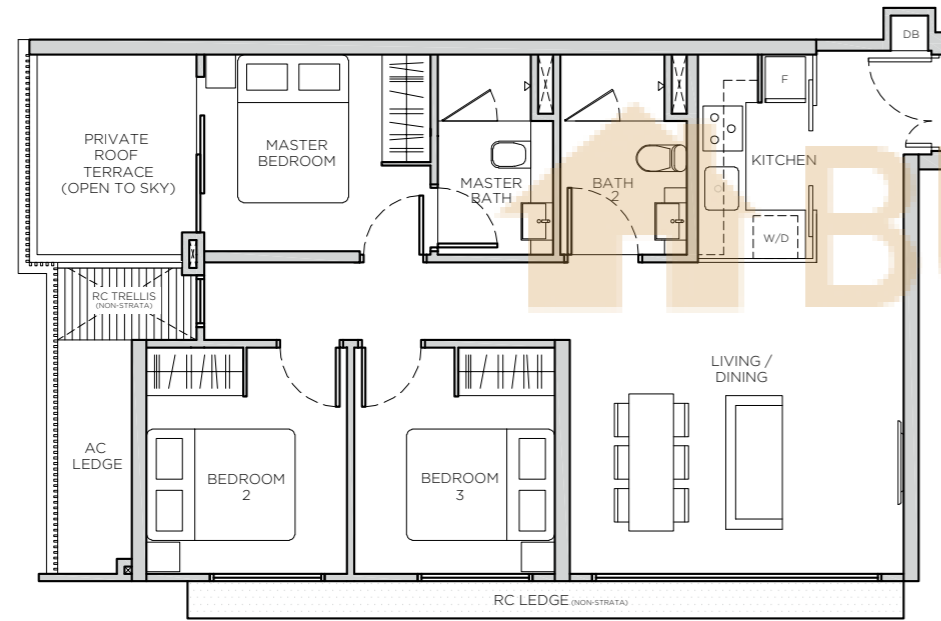
** The Balcony shall not be enclosed. Only URA approved balcony screen are to be used. For an illustration of the approved balcony screen, please refer to page 41 of this brochure.
 Note: Areas include A/C ledge, balcony, private roof terrace (open to sky) and strata void where applicable. Orientations and facings will differ depending on the unit you are purchasing, please refer to the key plan. Plans are not to scale and subject to change as may be required or approved by the relevant authorities. All areas are subject to final survey.

3 BEDROOM TYPE C1A

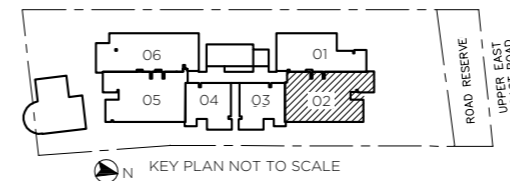
AREA : 84sqm/ 904sqft
UNIT : #04-05

3 BEDROOM TYPE C2

AREA : 84sqm/ 904sqft
UNIT : #02-02 | #03-02 | #04-02



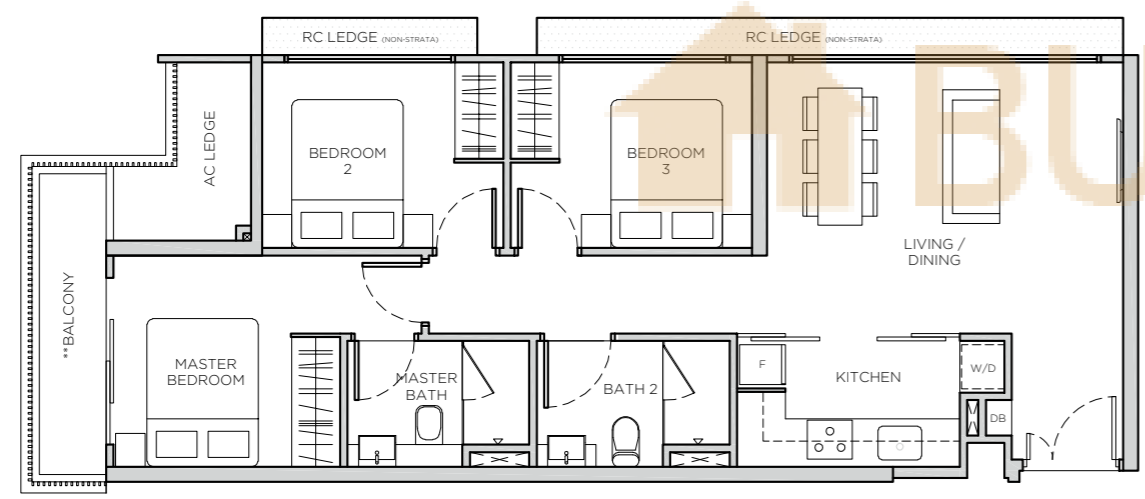
** The Balcony shall not be enclosed. Only URA approved balcony screen are to be used. For an illustration of the approved balcony screen, please refer to page 41 of this brochure.
 Note: Areas include A/C ledge, balcony, private roof terrace (open to sky) and strata void where applicable. Orientations and facings will differ depending on the unit you are purchasing, please refer to the key plan. Plans are not to scale and subject to change as may be required or approved by the relevant authorities. All areas are subject to final survey.



** The Balcony shall not be enclosed. Only URA approved balcony screen are to be used. For an illustration of the approved balcony screen, please refer to page 41 of this brochure.
 Note: Areas include A/C ledge, balcony, private roof terrace (open to sky) and strata void where applicable. Orientations and facings will differ depending on the unit you are purchasing, please refer to the key plan. Plans are not to scale and subject to change as may be required or approved by the relevant authorities. All areas are subject to final survey.

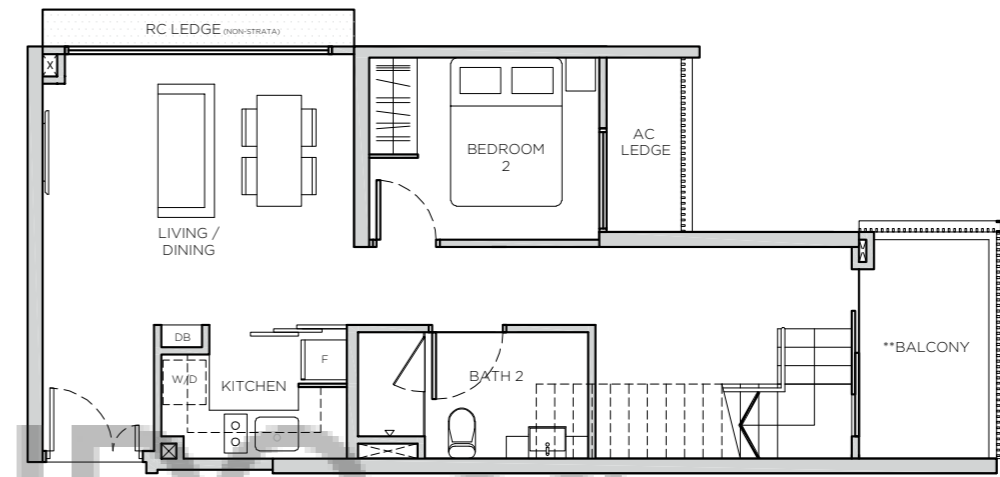
3 BEDROOM TYPE C3

AREA : 81sqm / 872sqft
UNIT : #02-06 | #03-06 | #04-06

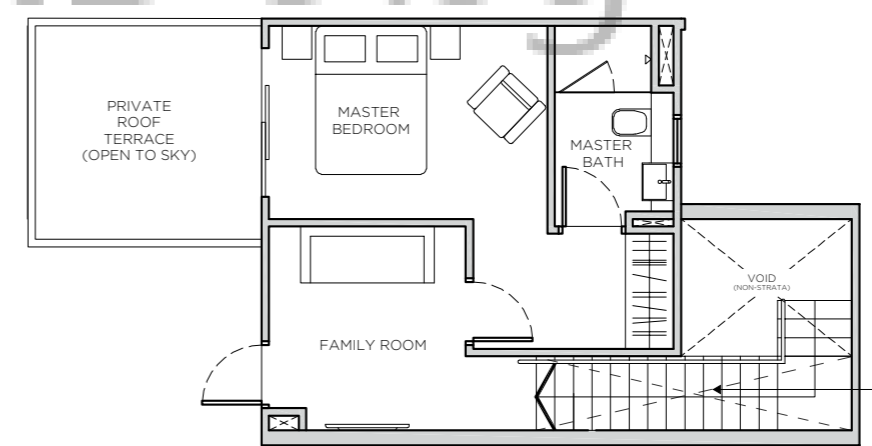


PENTHOUSE (2 BEDROOM + FAMILY) TYPE PH1

AREA : 106sqm / 1141sqft
UNIT : #05-01

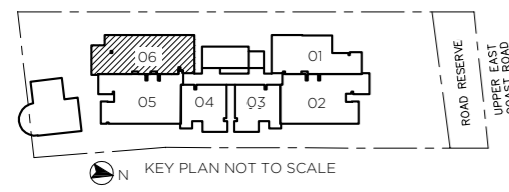


LOWER LEVEL

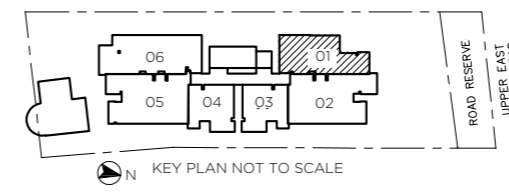


UPPER LEVEL

STRATA AREA IS INCLUSIVE OF STRATA VOID ABOVE STAIRCASE



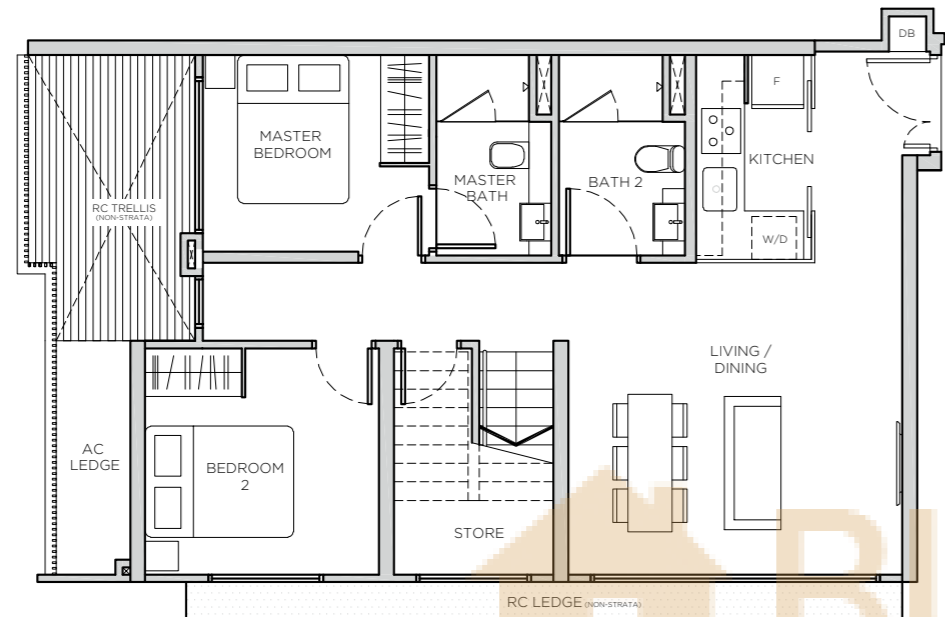
** The Balcony shall not be enclosed. Only URA approved balcony screen are to be used. For an illustration of the approved balcony screen, please refer to page 41 of this brochure.
Note: Areas include A/C ledge, balcony, private roof terrace (open to sky) and strata void where applicable. Orientations and facings will differ depending on the unit you are purchasing, please refer to the key plan. Plans are not to scale and subject to change as may be required or approved by the relevant authorities. All areas are subject to final survey.



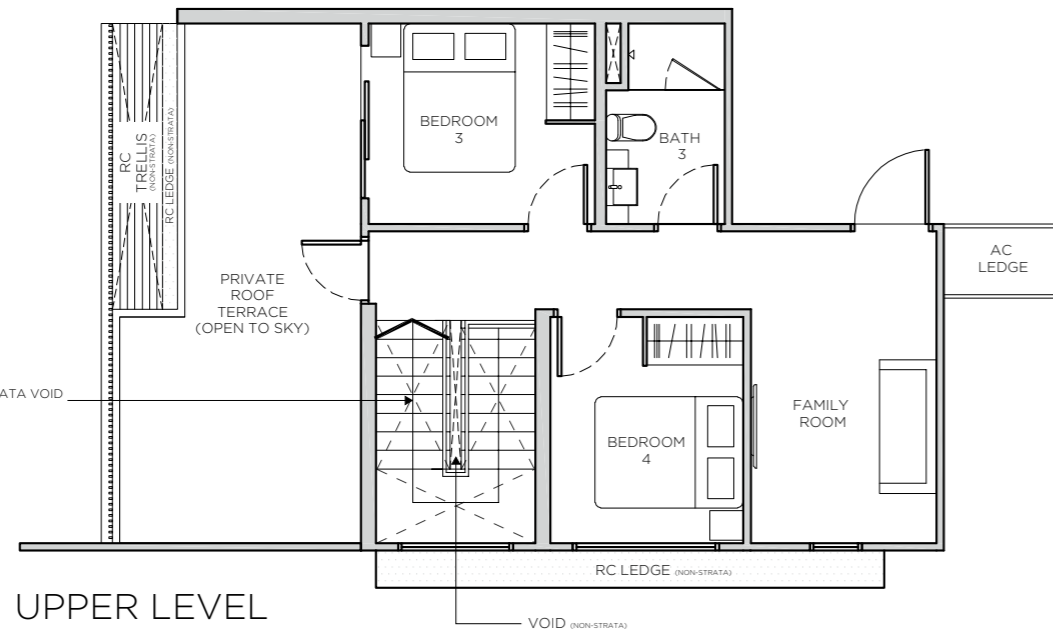
** The Balcony shall not be enclosed. Only URA approved balcony screen are to be used. For an illustration of the approved balcony screen, please refer to page 41 of this brochure.
Note: Areas include A/C ledge, balcony, private roof terrace (open to sky) and strata void where applicable. Orientations and facings will differ depending on the unit you are purchasing, please refer to the key plan. Plans are not to scale and subject to change as may be required or approved by the relevant authorities. All areas are subject to final survey.

PENTHOUSE (4 BEDROOM + FAMILY) TYPE PH2

AREA : 148sqm / 1593sqft
UNIT : #05-05

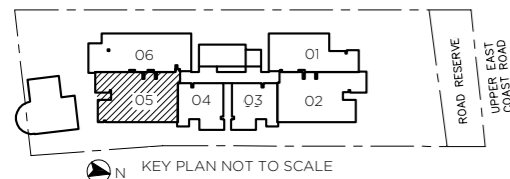


LOWER LEVEL



UPPER LEVEL

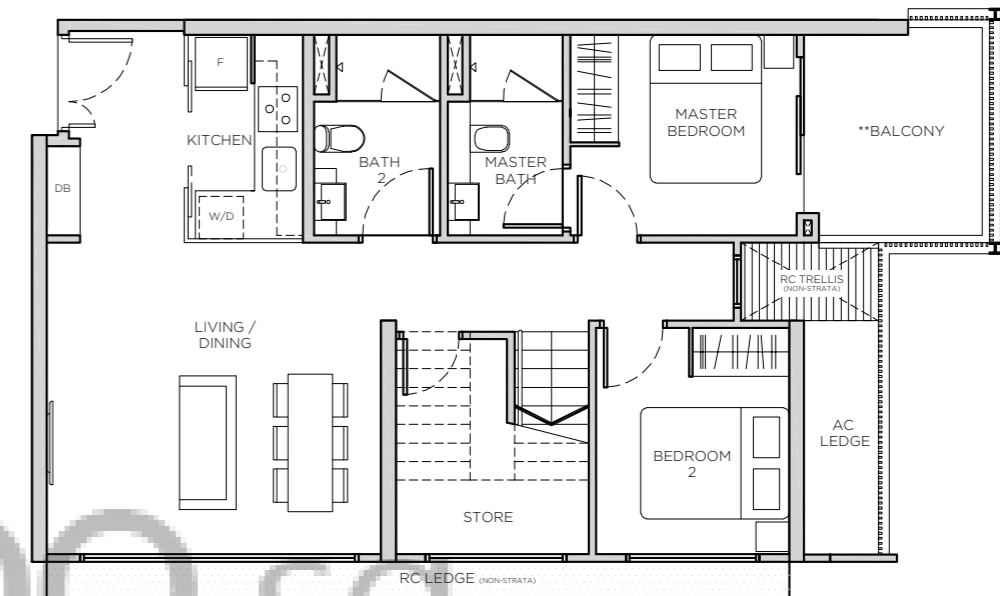
STRATA AREA IS INCLUSIVE OF STRATA VOID ABOVE STAIRCASE



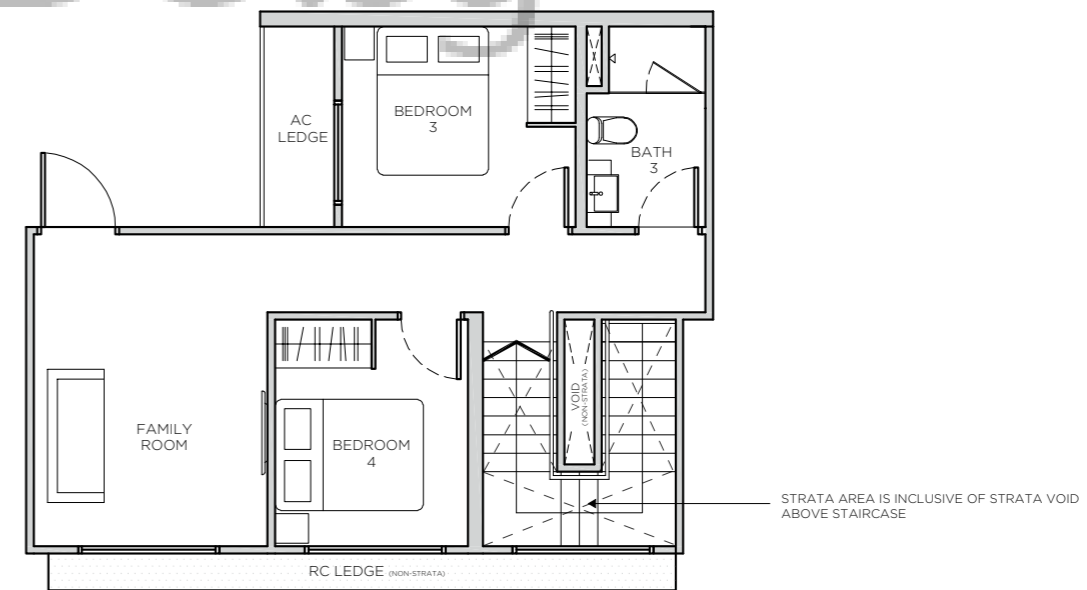
** The Balcony shall not be enclosed. Only URA approved balcony screen are to be used. For an illustration of the approved balcony screen, please refer to page 41 of this brochure.
Note: Areas include A/C ledge, balcony, private roof terrace (open to sky) and strata void where applicable. Orientations and facings will differ depending on the unit you are purchasing, please refer to the key plan. Plans are not to scale and subject to change as may be required or approved by the relevant authorities. All areas are subject to final survey.

PENTHOUSE (4 BEDROOM + FAMILY) TYPE PH3

AREA : 139sqm / 1496sqft
UNIT : #05-02

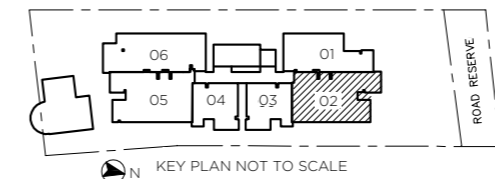


LOWER LEVEL



UPPER LEVEL

STRATA AREA IS INCLUSIVE OF STRATA VOID ABOVE STAIRCASE

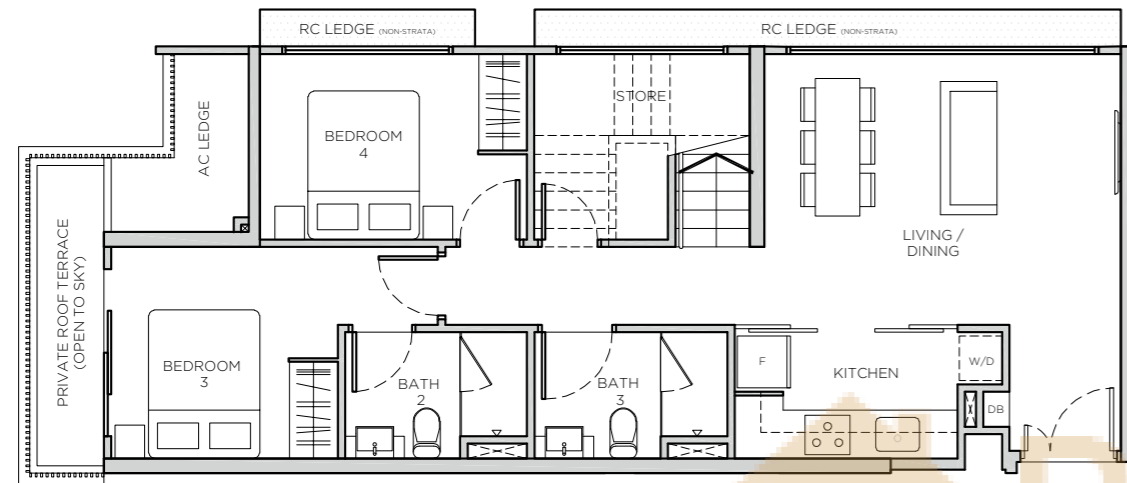


** The Balcony shall not be enclosed. Only URA approved balcony screen are to be used. For an illustration of the approved balcony screen, please refer to page 41 of this brochure.
Note: Areas include A/C ledge, balcony, private roof terrace (open to sky) and strata void where applicable. Orientations and facings will differ depending on the unit you are purchasing, please refer to the key plan. Plans are not to scale and subject to change as may be required or approved by the relevant authorities. All areas are subject to final survey.

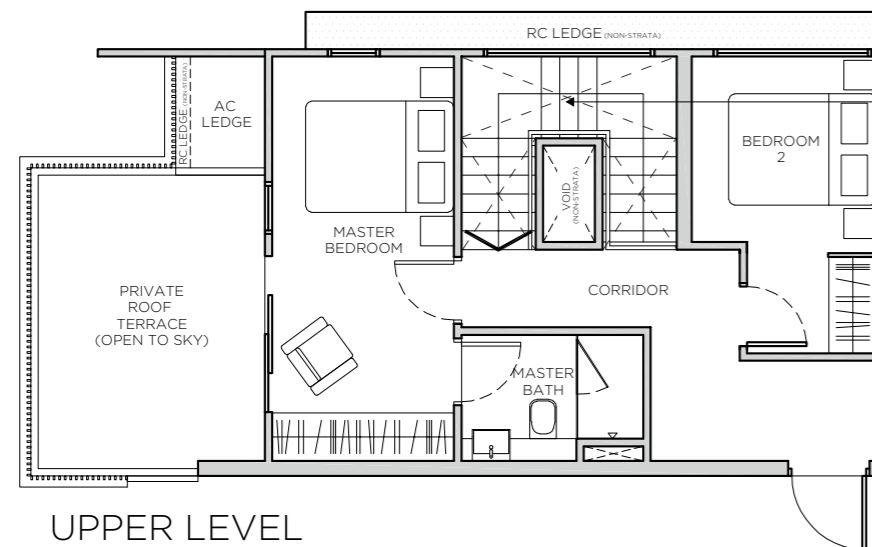
PENTHOUSE (4 BEDROOM) TYPE PH4

AREA : 142sqm/ 1528sqft

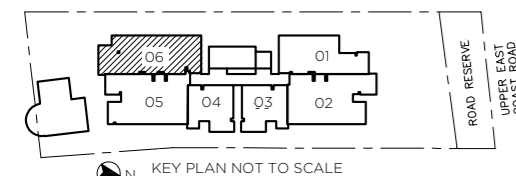
UNIT : #05-06



LOWER LEVEL



UPPER LEVEL



** The Balcony shall not be enclosed. Only URA approved balcony screen are to be used. For an illustration of the approved balcony screen, please refer to page 41 of this brochure.
 Note: Areas include A/C ledge, balcony, private roof terrace (open to sky) and strata void where applicable. Orientations and facings will differ depending on the unit you are purchasing, please refer to the key plan. Plans are not to scale and subject to change as may be required or approved by the relevant authorities. All areas are subject to final survey.

BALCONY SCREENS

Balcony screens are not provided by the developer.
 Buyer may install screen that are in accordance with the URA approved design as shown in the illustration below

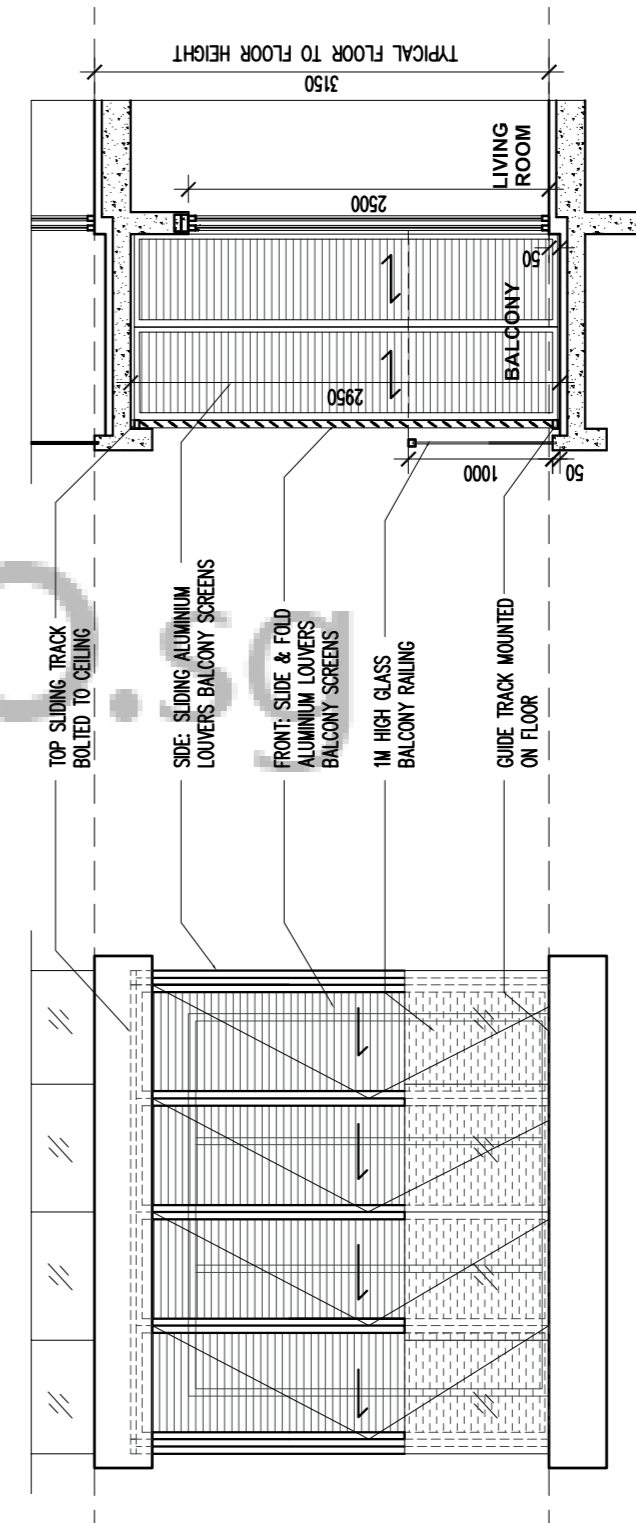


ILLUSTRATION OF TYPICAL BALCONY SCREEN APPROVED BY URA