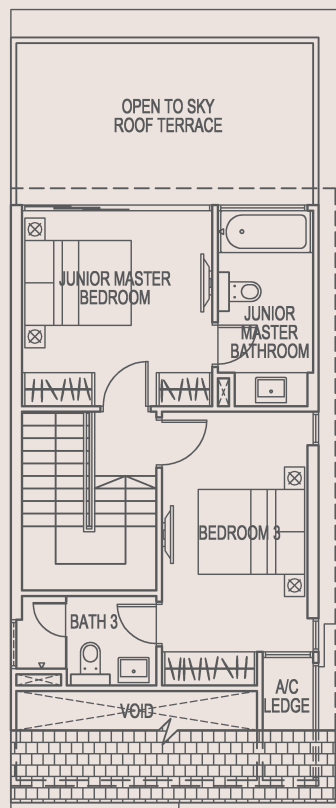
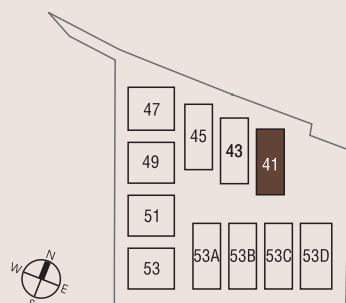


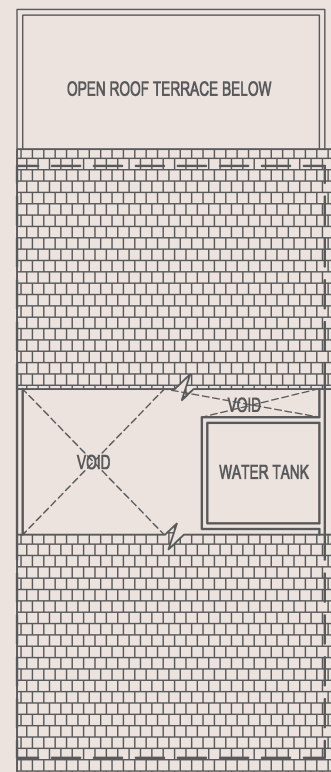
House No. 41

Area 6,103 sqft / 567 sqm

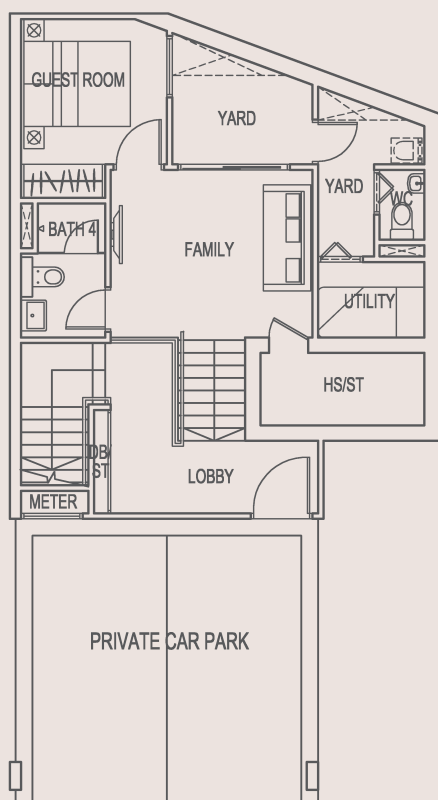
(Inclusive of private carpark/remnant space, PES/swimming pool, A/C ledge, planter, roof terrace, water tank & strata void)



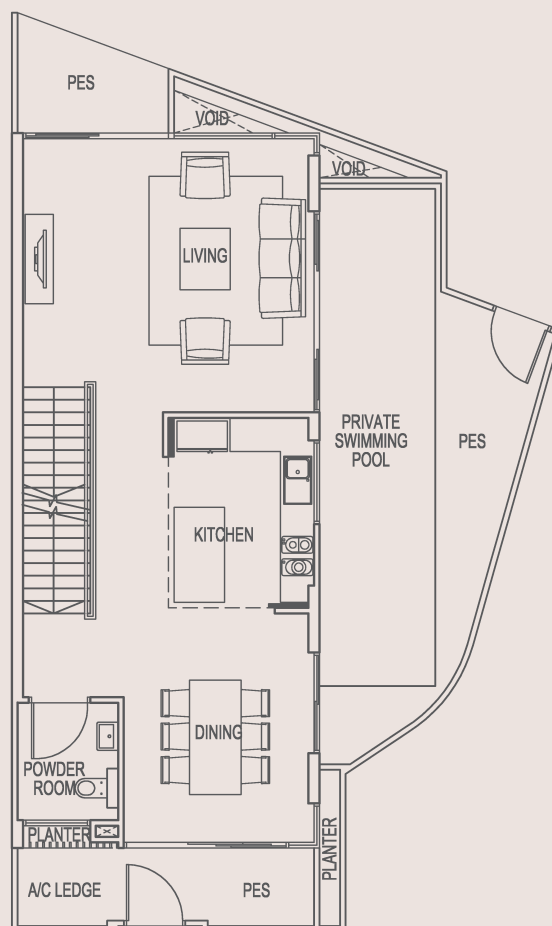
ATTIC



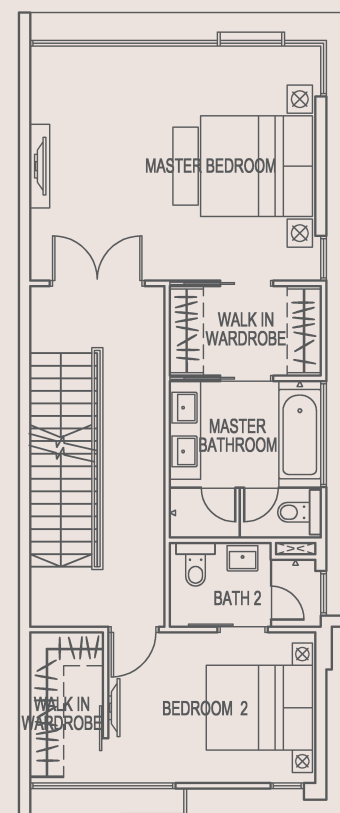
WATER TANK LEVEL



BASEMENT



1ST STOREY

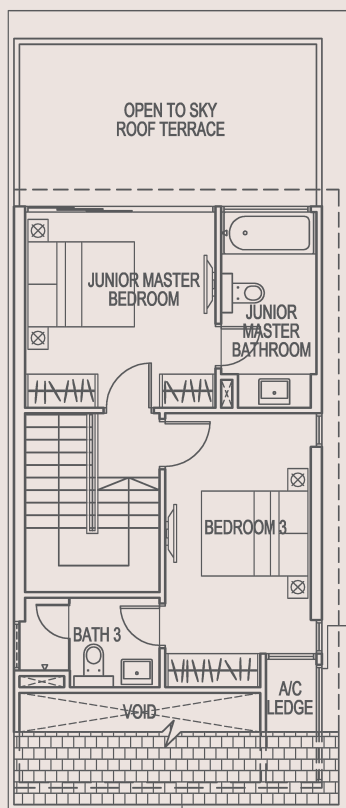


2ND STOREY

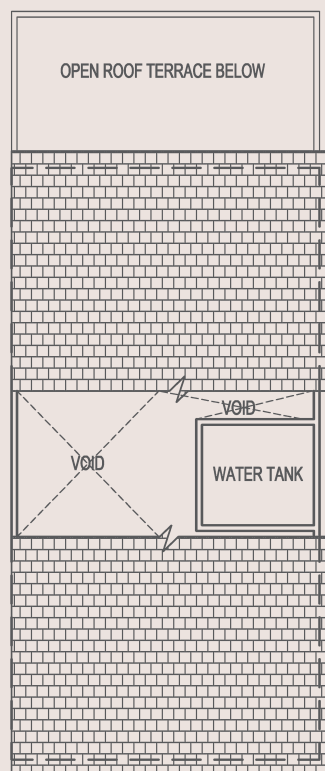
House No. 43

Area 6,168 sqft / 573 sqm

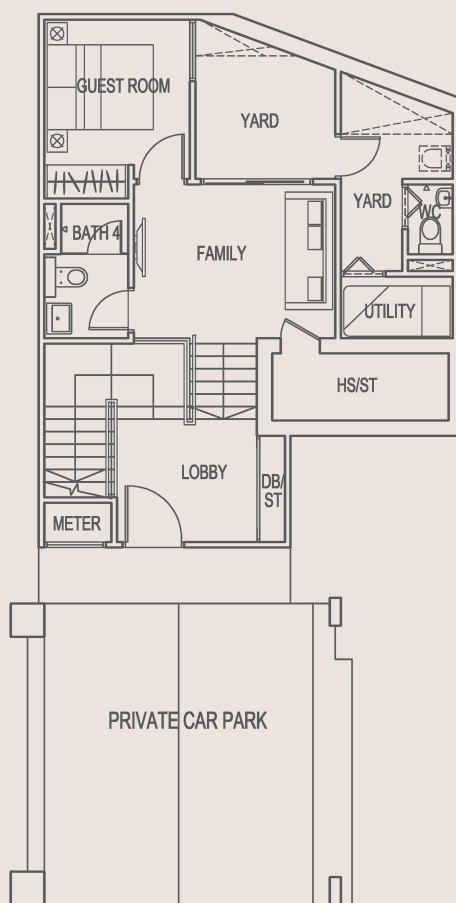
(Inclusive of private carpark/remnant space, PES/swimming pool, A/C ledge, planter, roof terrace, water tank & strata void)



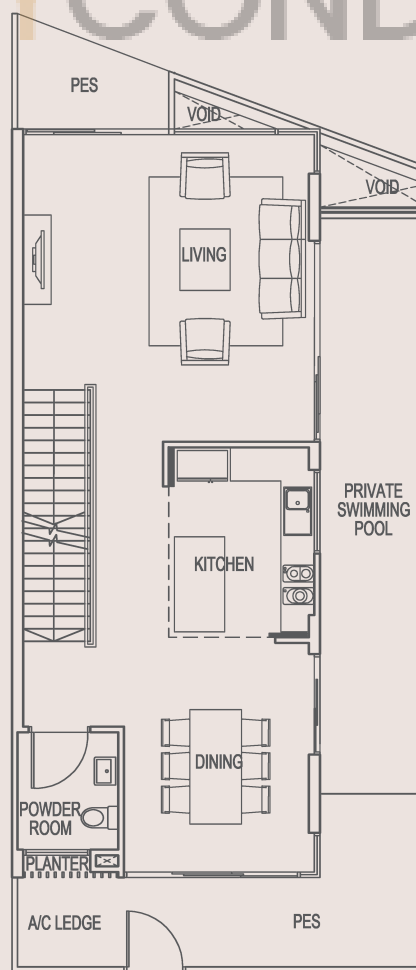
ATTIC



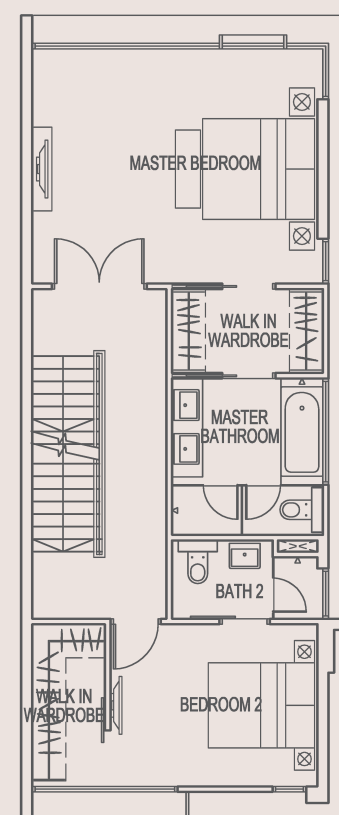
WATER TANK LEVEL



BASEMENT



1ST STOREY

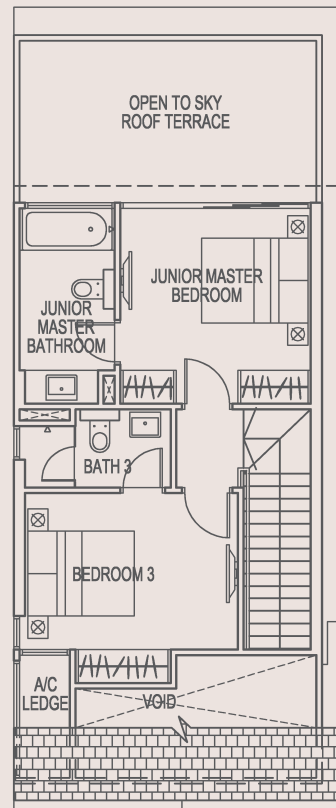


2ND STOREY

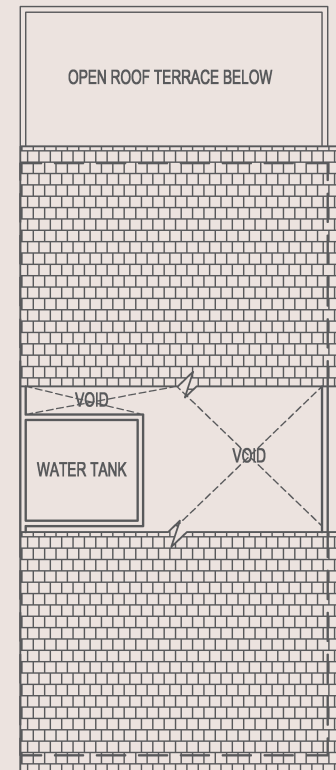
House No. 45

Area 6,243 sqft / 580 sqm

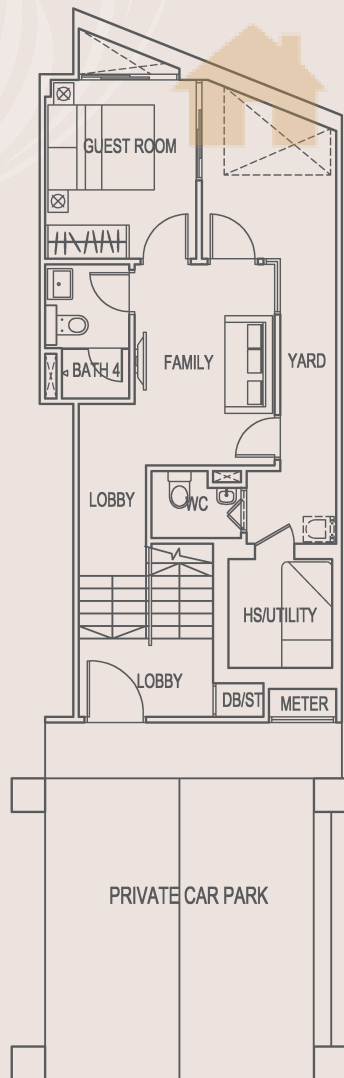
(Inclusive of private carpark/remnant space, PES/swimming pool, A/C ledge, planter, roof terrace, water tank & strata void)



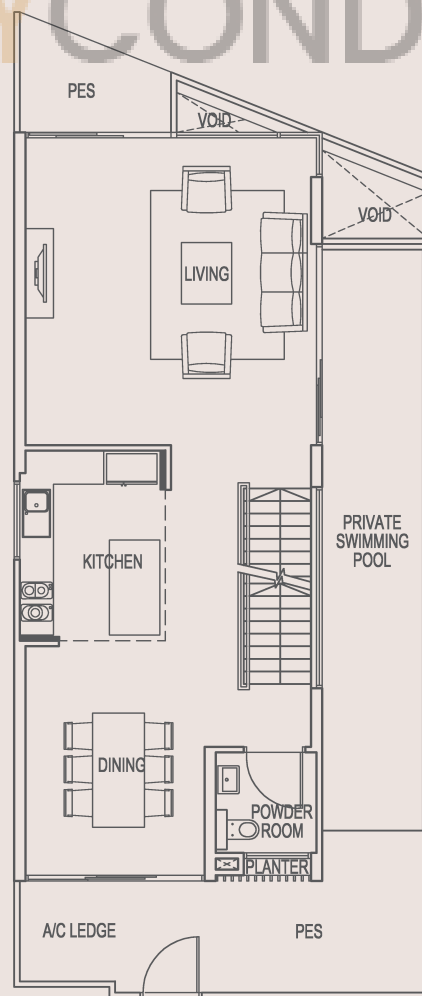
ATTIC



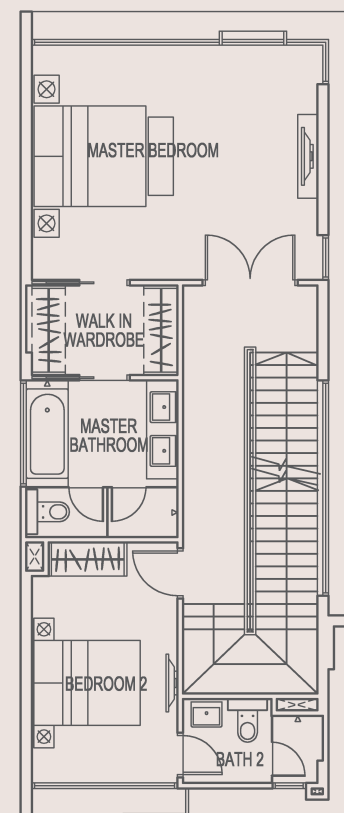
WATER TANK LEVEL



BASEMENT



1ST STOREY



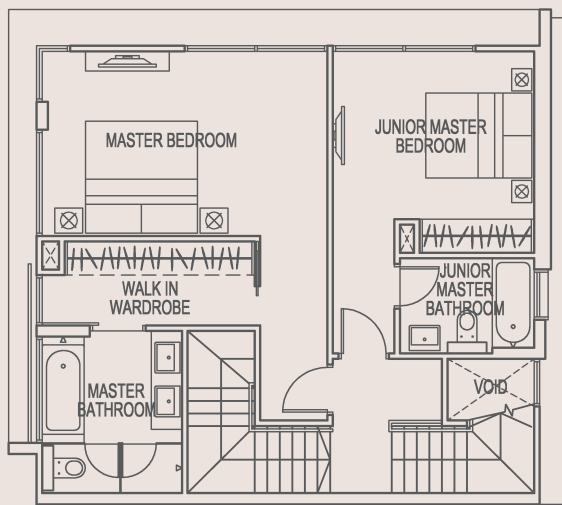
2ND STOREY

BUYCONDO.sg

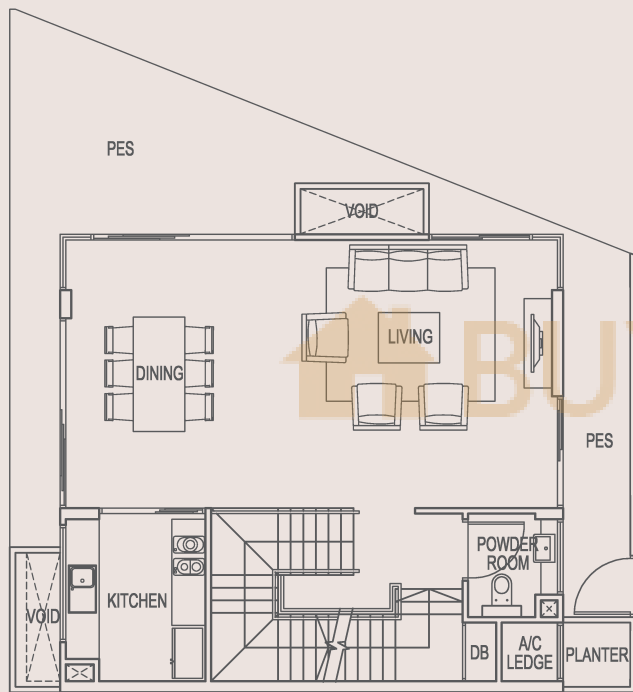
House No. 47

Area 5,974 sqft / 555 sqm

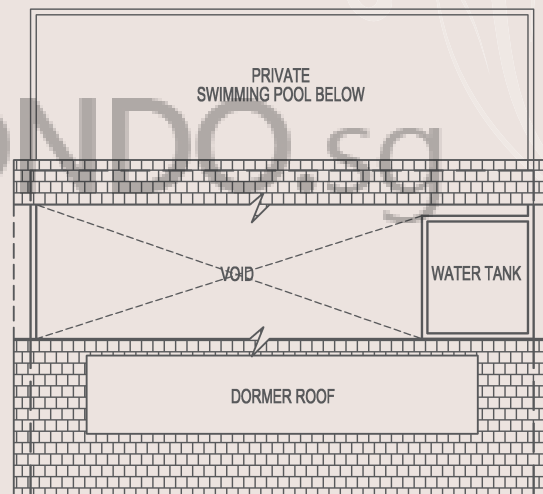
(Inclusive of private carpark/remnant space, PES, swimming pool/deck, A/C ledge, planter, water tank & strata void)



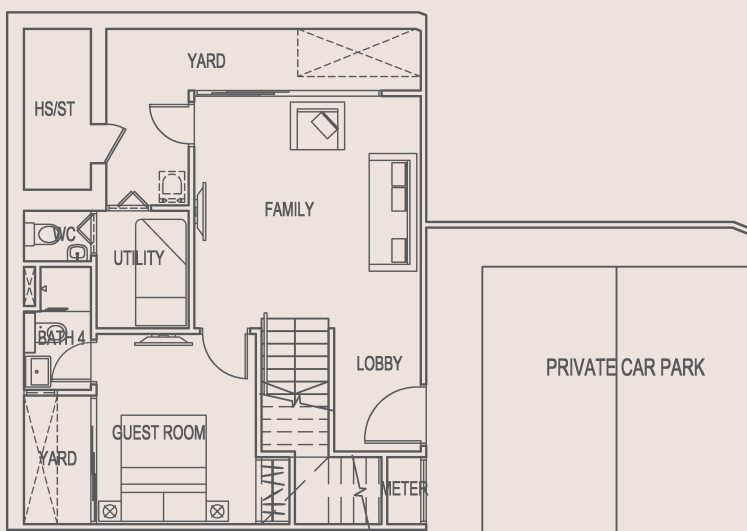
2ND STOREY



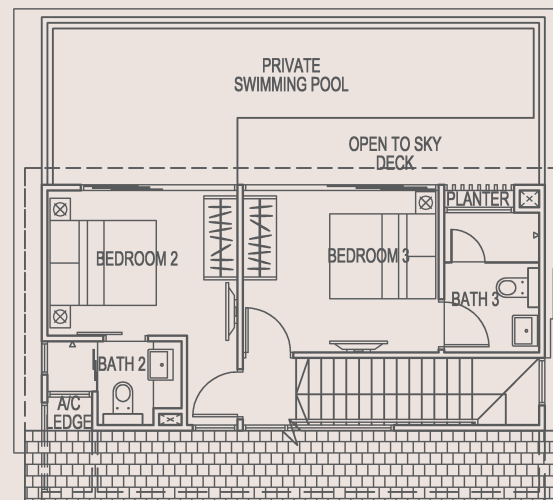
1ST STOREY



WATER TANK LEVEL



BASEMENT

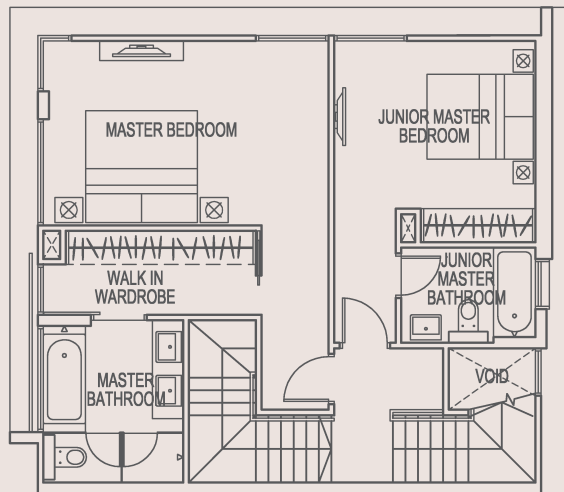


ATTIC

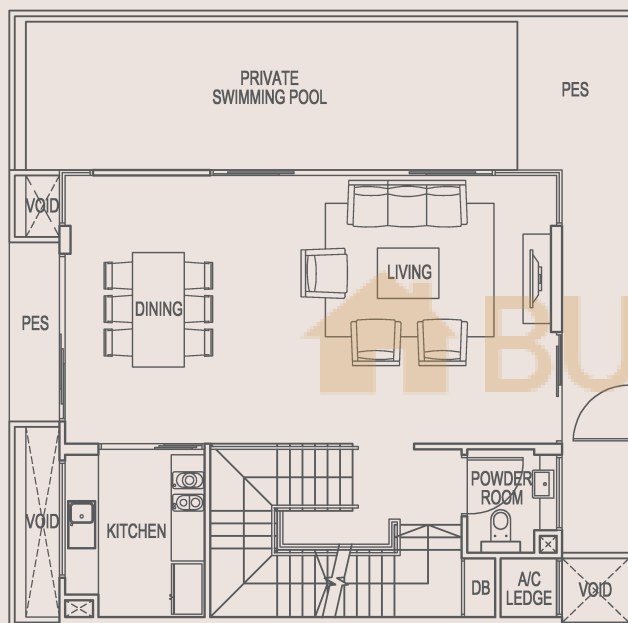
House No. 49 & 51

Area 6,189 sqft / 575 sqm

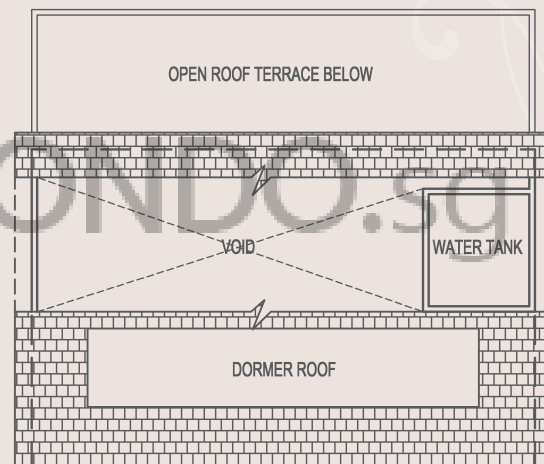
(Inclusive of private carpark/remnant space, PES/swimming pool, A/C ledge, planter, roof terrace, water tank & strata void)



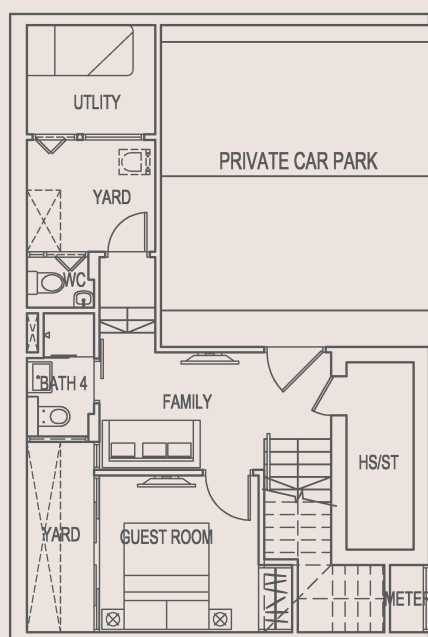
2ND STOREY



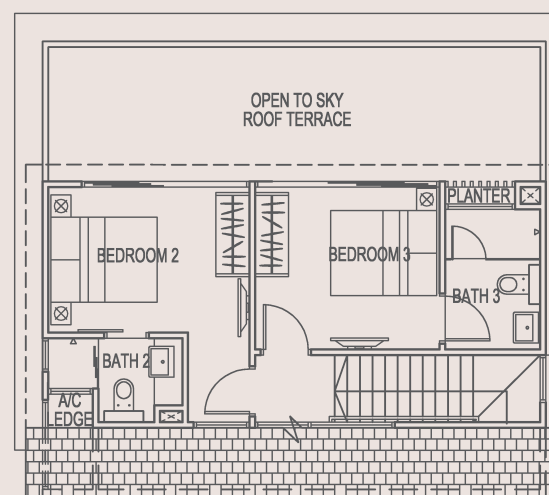
1ST STOREY



WATER TANK LEVEL



BASEMENT

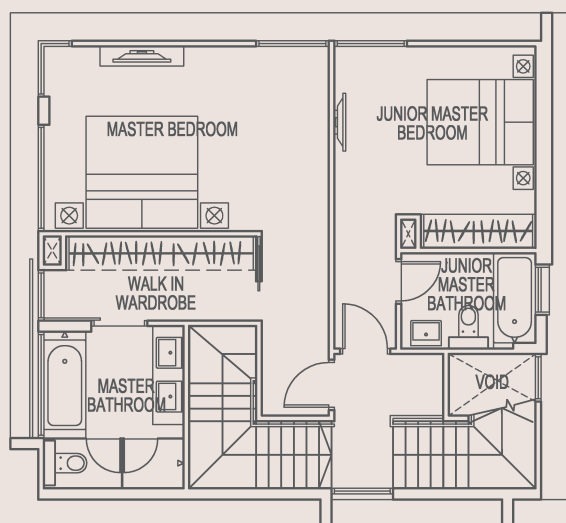


ATTIC

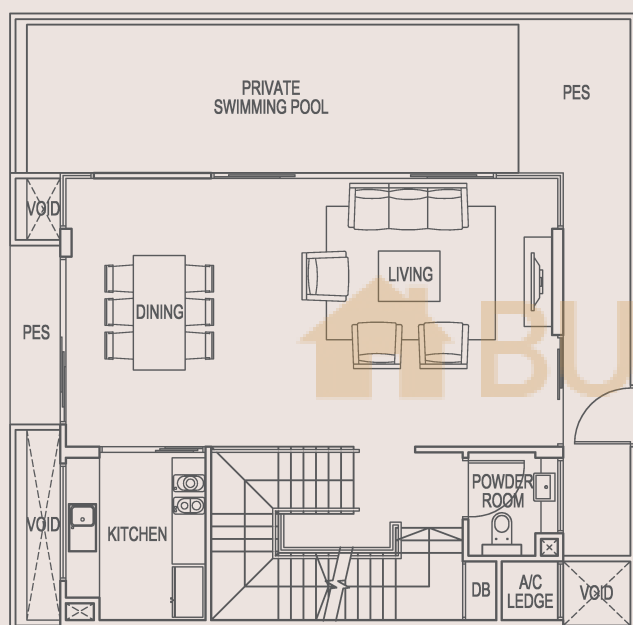
House No. 53

Area 6,383 sqft / 593 sqm

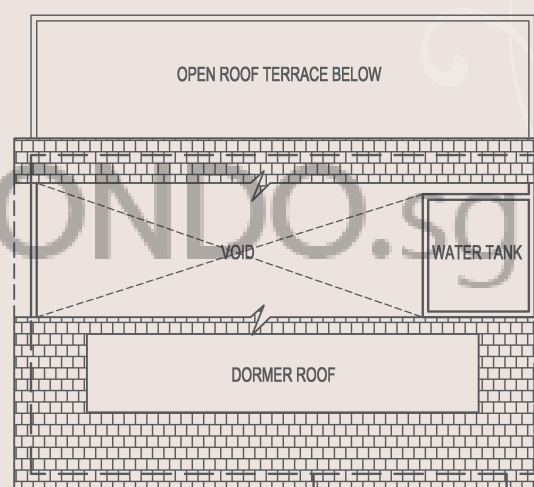
(Inclusive of private carpark/remnant space, PES/swimming pool, A/C ledge, planter, roof terrace, water tank & strata void)



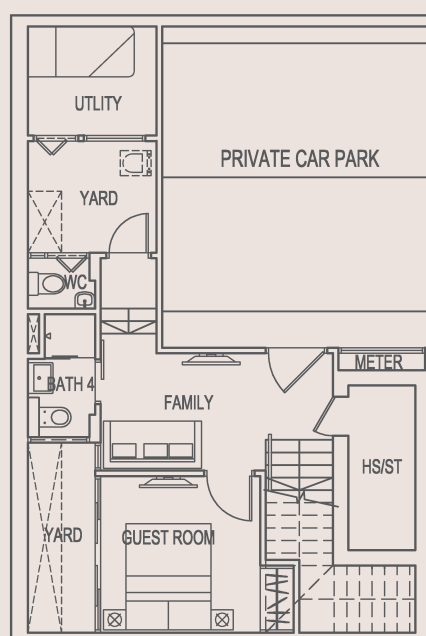
2ND STOREY



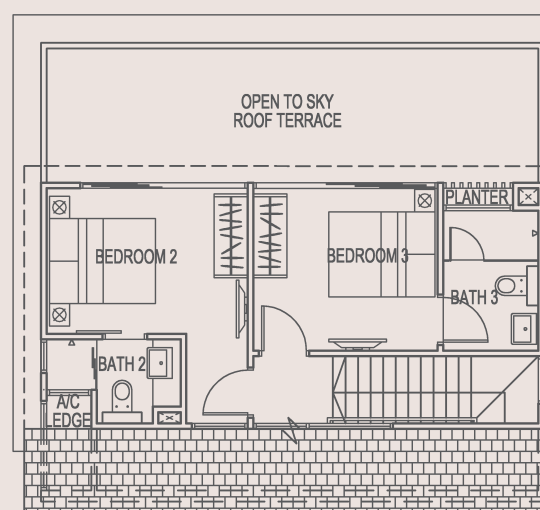
1ST STOREY



WATER TANK LEVEL



BASEMENT

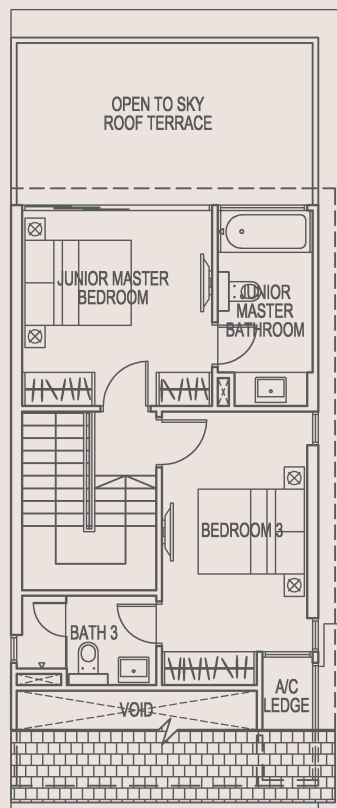


ATTIC

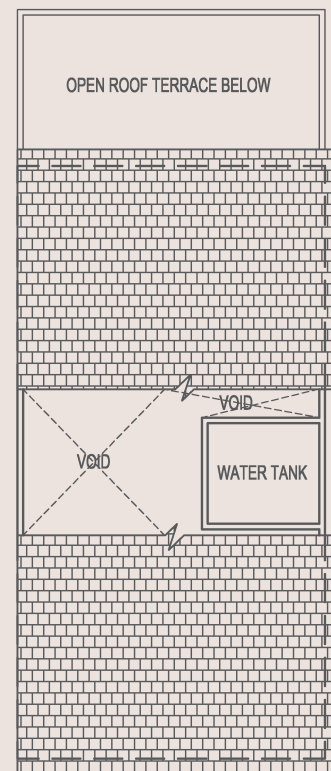
House No. 53A

Area 6,523 sqft / 606 sqm

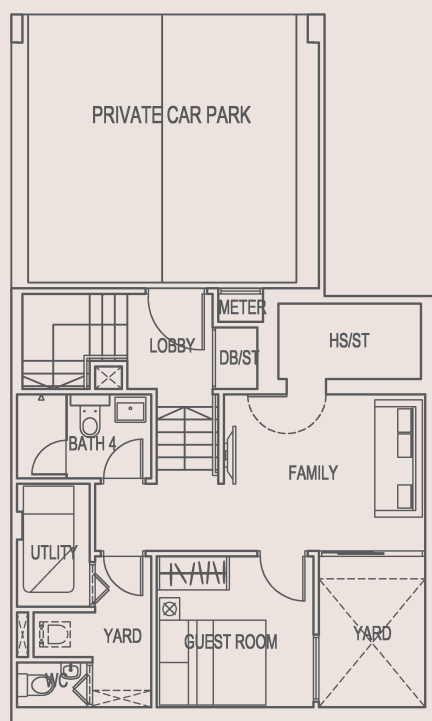
(Inclusive of private carpark/remnant space, PES/swimming pool, A/C ledge, roof terrace, water tank & strata void)



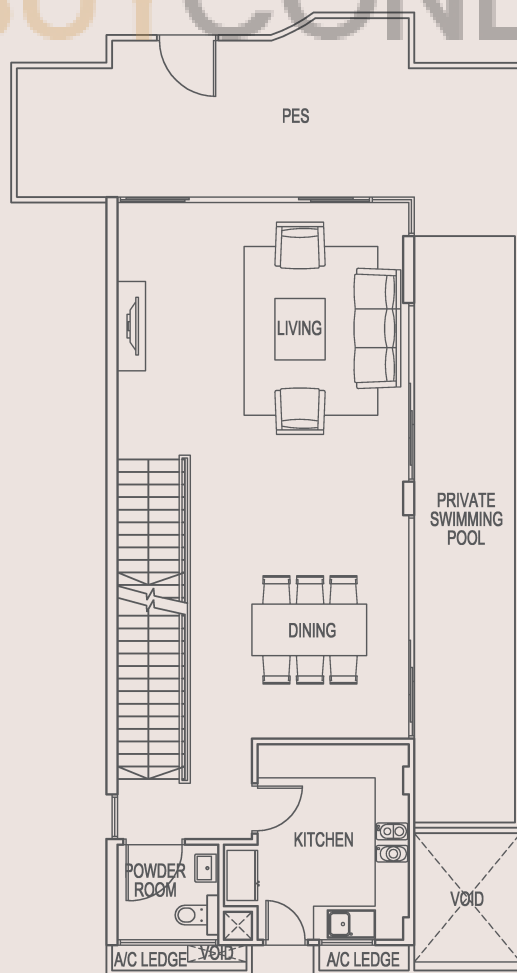
ATTIC



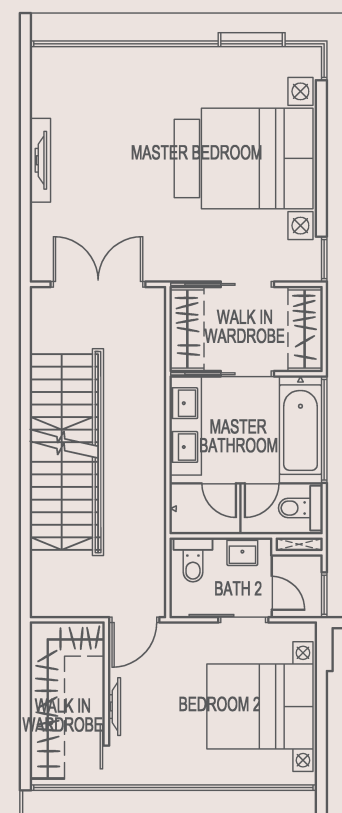
WATER TANK LEVEL



BASEMENT



1ST STOREY

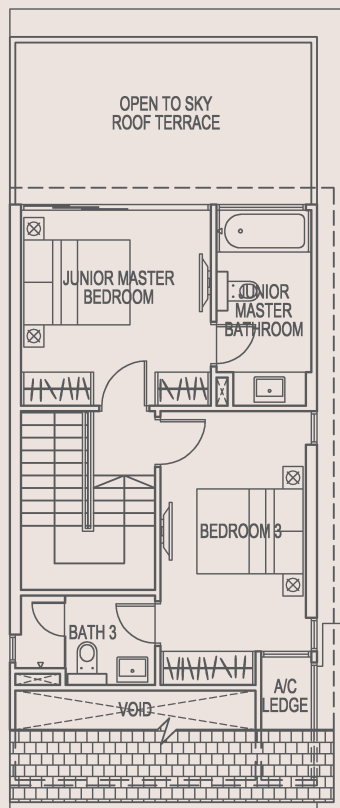


2ND STOREY

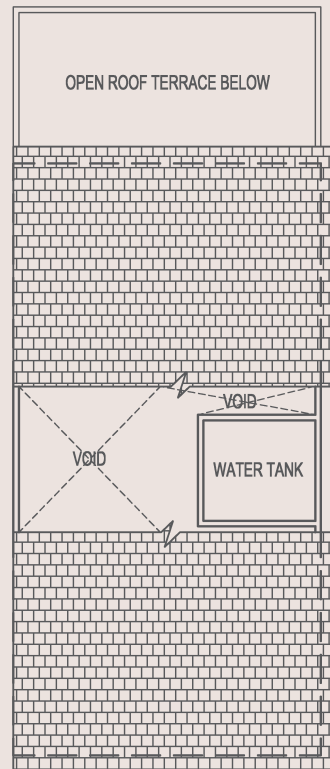
House No. 53B

Area 6,351 sqft / 590 sqm

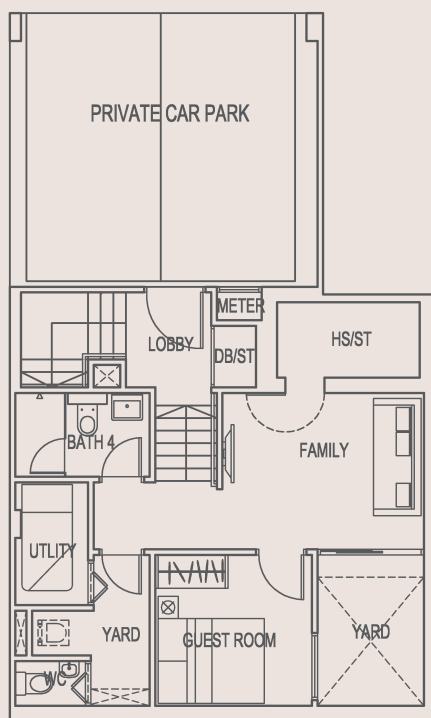
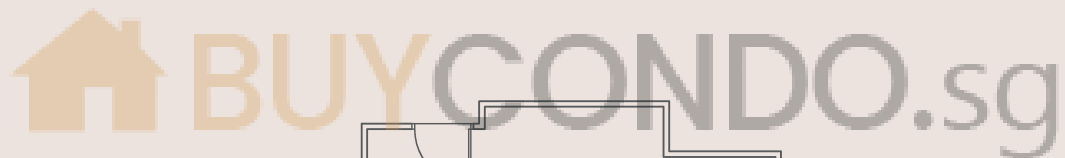
(Inclusive of private carpark/remnant space, PES/swimming pool, A/C ledge, roof terrace, water tank & strata void)



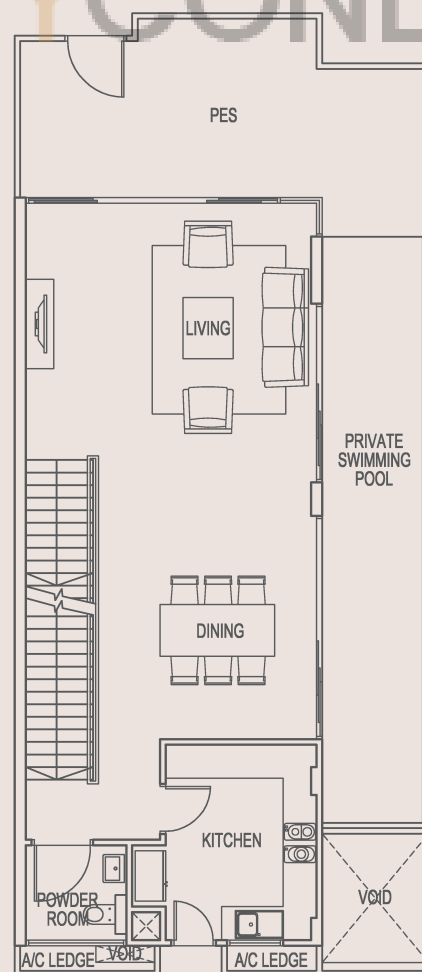
ATTIC



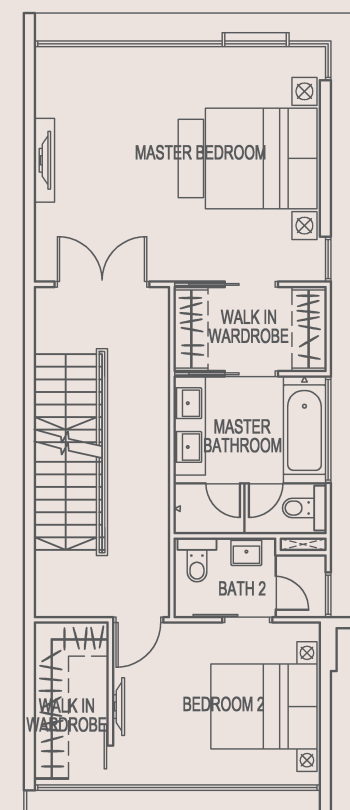
WATER TANK LEVEL



BASEMENT



1ST STOREY

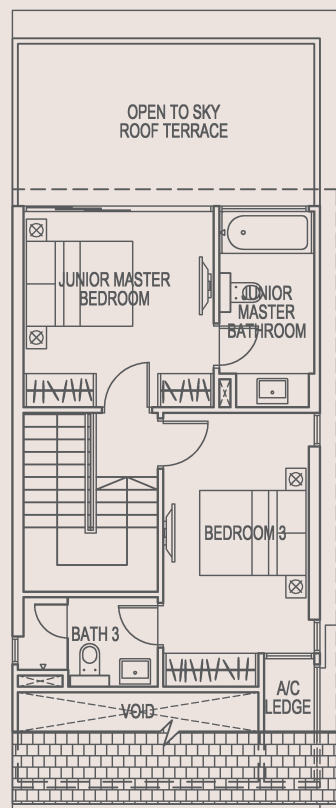


2ND STOREY

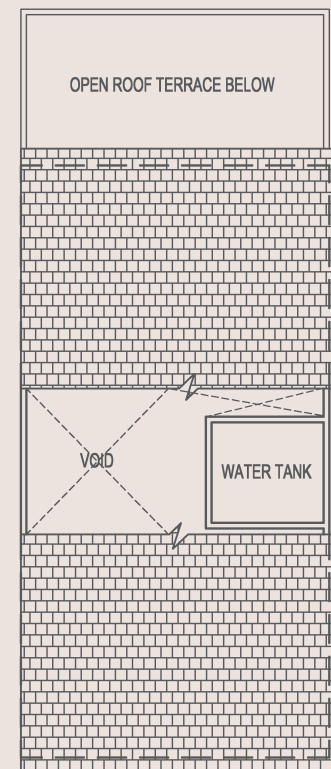
House No. 53C

Area 6,351 sqft / 590 sqm

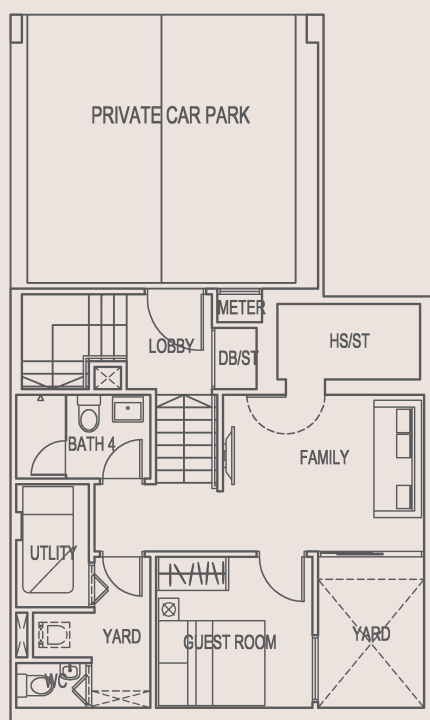
(Inclusive of private carpark/remnant space, PES/swimming pool, A/C ledge, roof terrace, water tank & strata void)



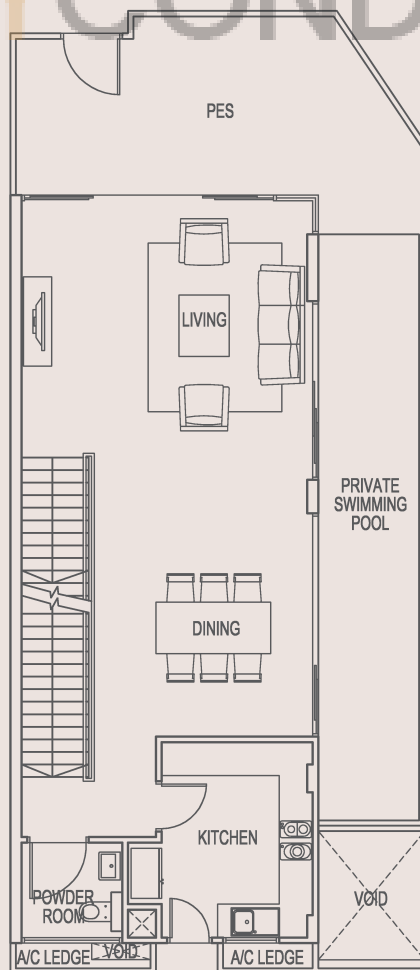
ATTIC



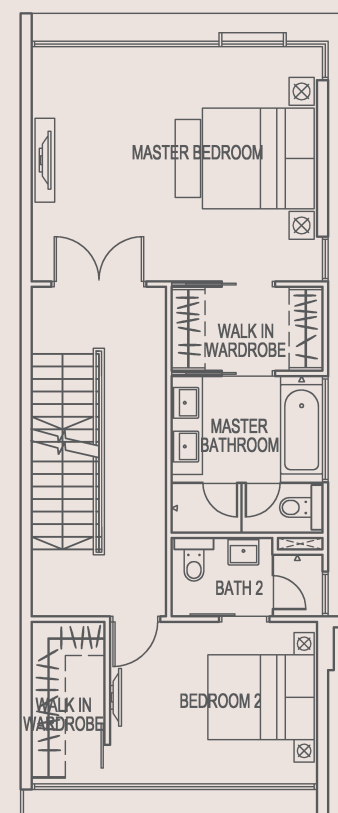
WATER TANK LEVEL



BASEMENT



1ST STOREY

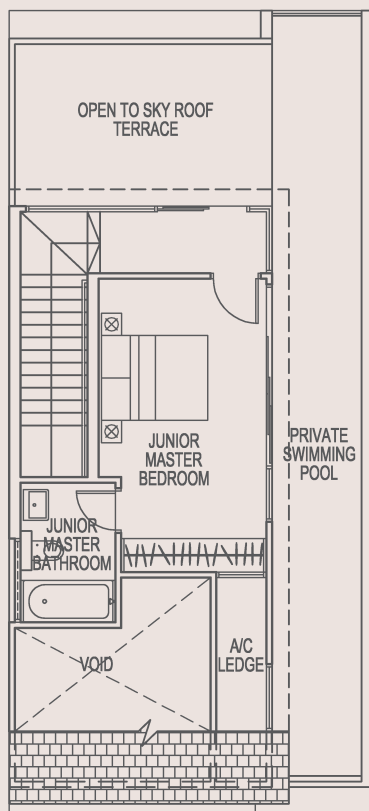


2ND STOREY

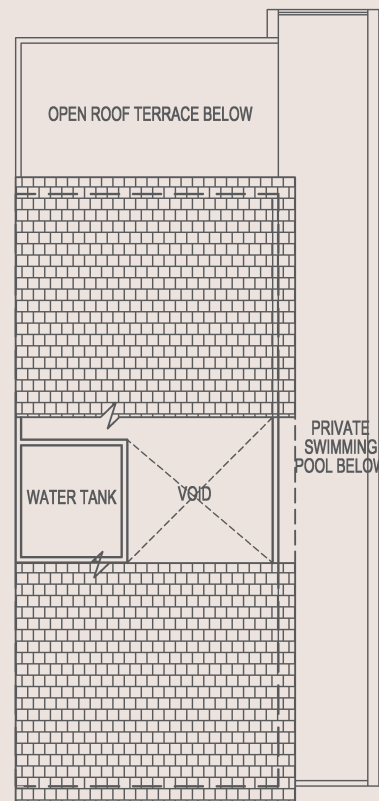
House No. 53D

Area 6,114 sqft / 568 sqm

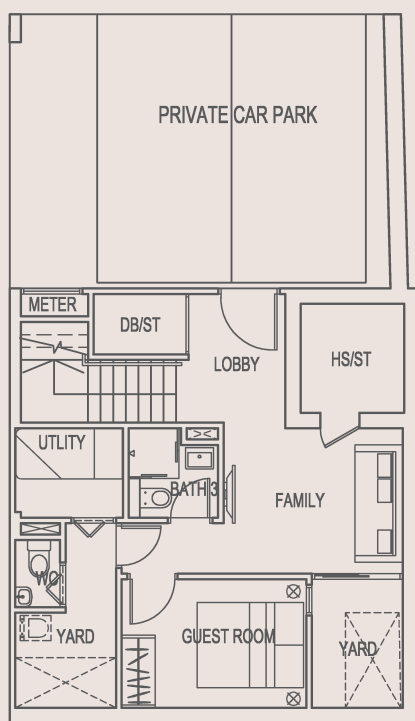
(Inclusive of private carpark/remnant space, PES, roof terrace/swimming pool, A/C ledge, planter, water tank & strata void)



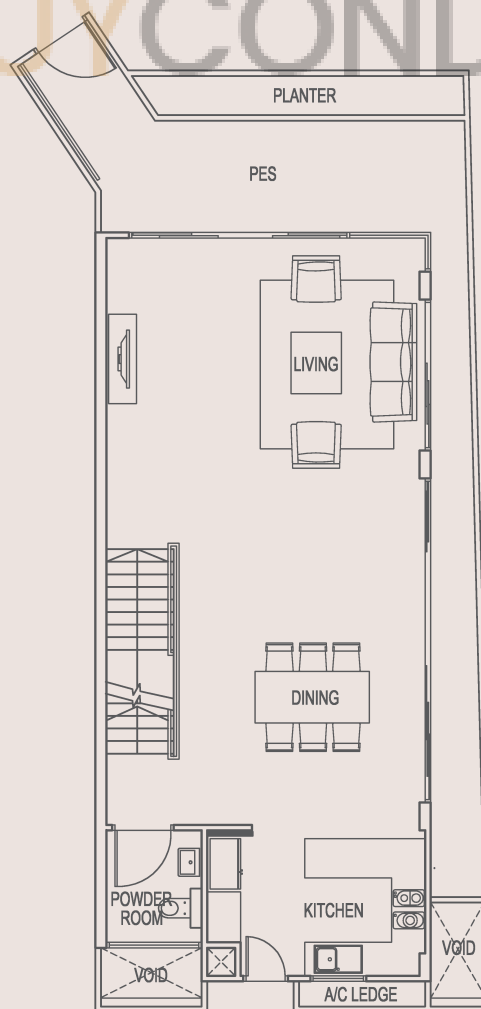
ATTIC



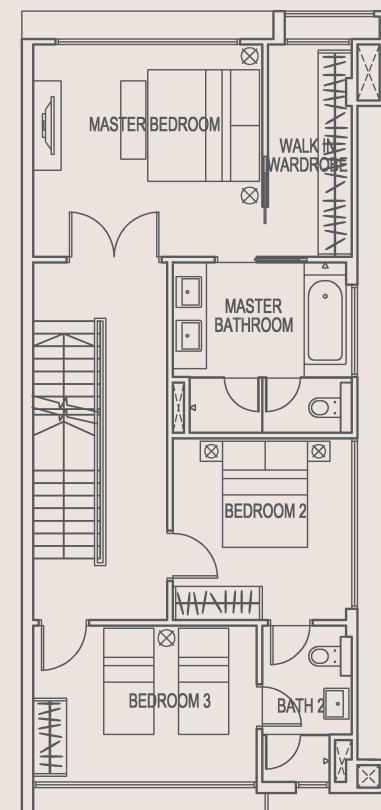
WATER TANK LEVEL



BASEMENT



1ST STOREY



2ND STOREY