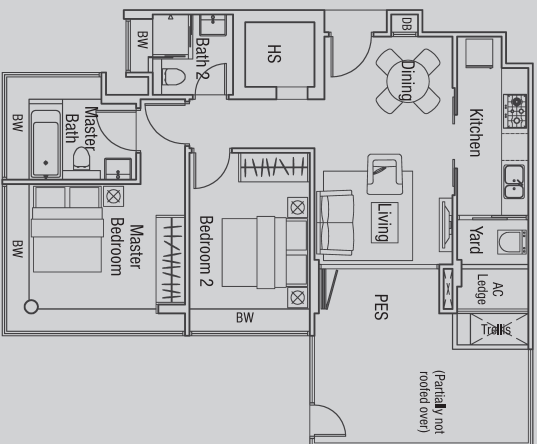


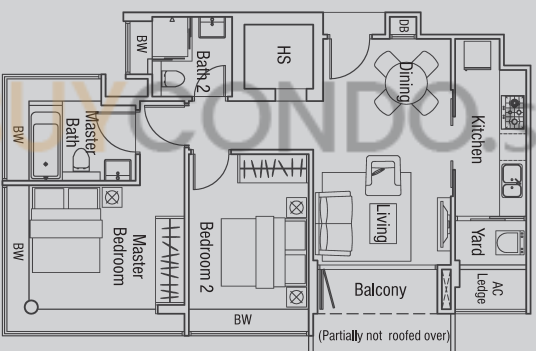
**Type A1-G (2-Bedroom)**

Unit #01-01  
Area 969 sqft / 90 sqm



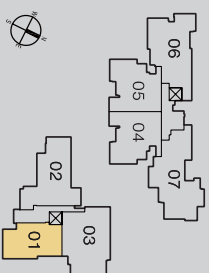
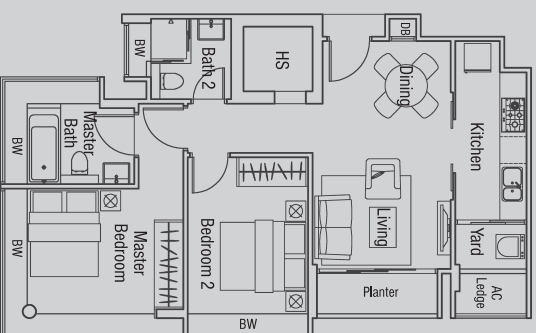
**Type A1-a (2-Bedroom)**

Unit #02-01  
Area 861 sqft / 80 sqm



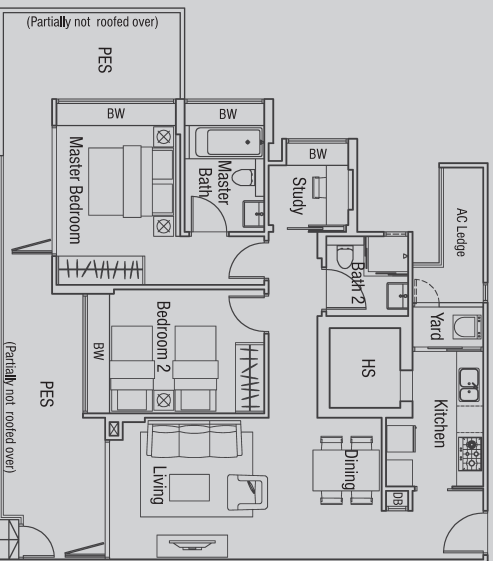
**Type A1 (2-Bedroom)**

Unit #03-01 & #04-01  
Area 829 sqft / 77 sqm



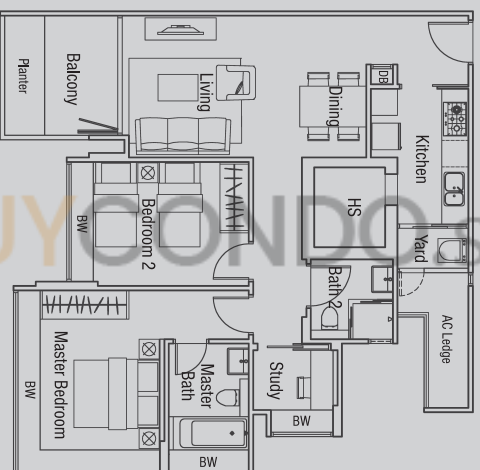
### Type B1-G (2-Bedroom + Study)

Unit #01-05  
Area 1216 sqft / 113 sqm



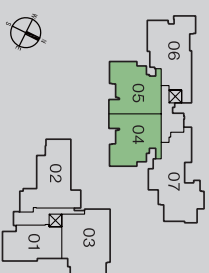
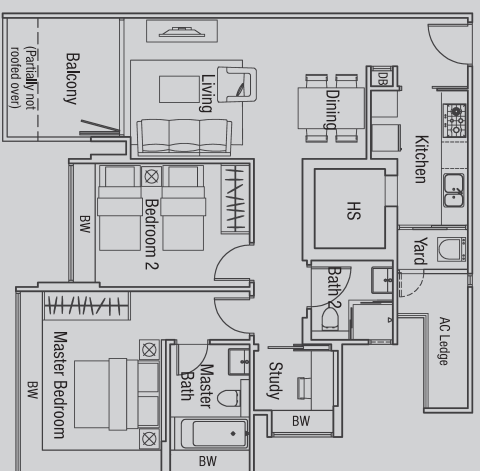
### Type B1 (2-Bedroom + Study)

Unit #02-04 & #03-04  
#02-05 & #03-05  
Area 1012 sqft / 94 sqm



### Type B1-a (2-Bedroom + Study)

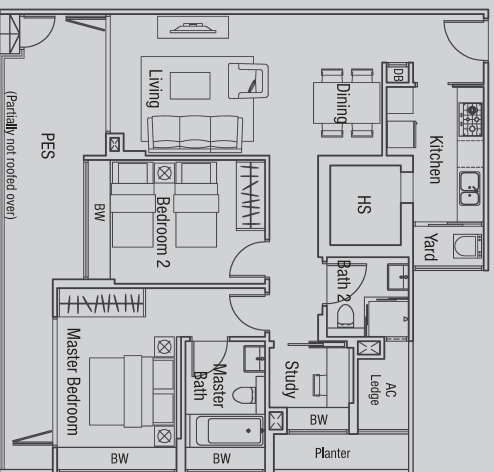
Unit #04-04 & #04-05  
Area 1012 sqft / 94 sqm



All plans are subject to amendments as approved by the relevant authorities. Floor areas are approximate measurements and subject to final survey.

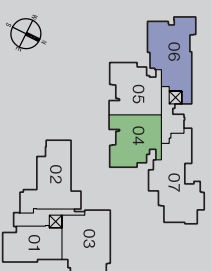
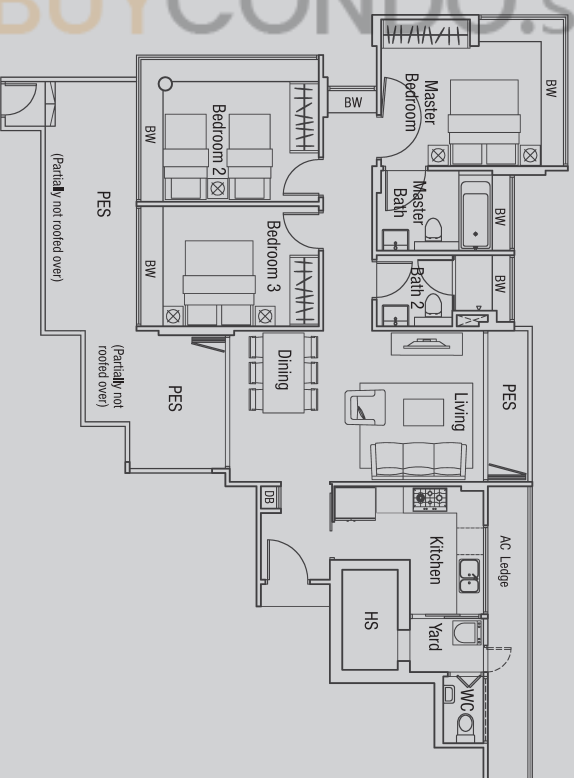
### Type B2-G (2-Bedroom + Study)

Unit #01-04  
Area 1141 sqft / 106 sqm



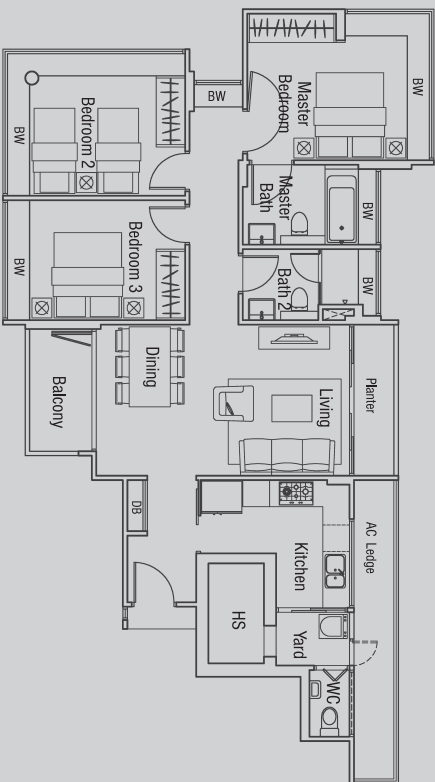
### Type C1-G (3-Bedroom)

Unit #01-06  
Area 1421 sqft / 132 sqm



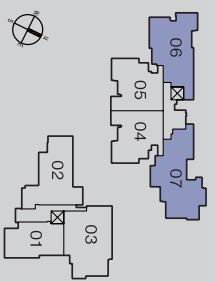
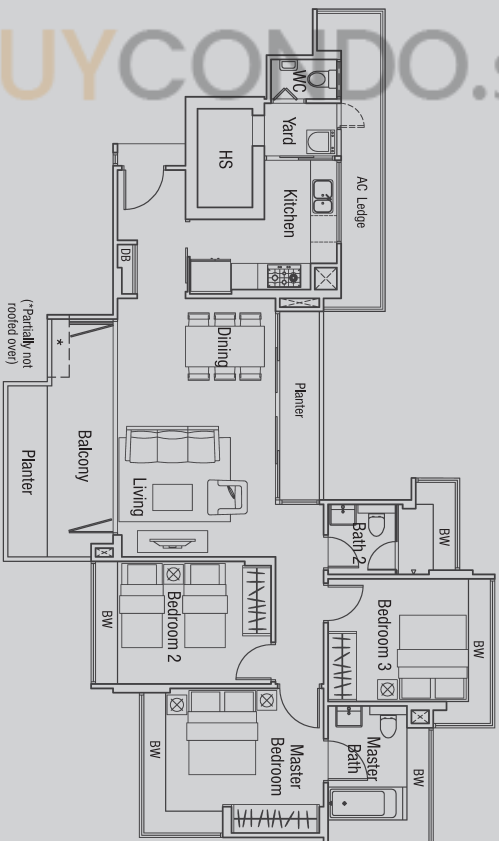
### Type C1 (3-Bedroom)

Unit #02-06, #03-06 & #04-06  
Area 1238 sqft / 115 sqm



### Type C2 (3-Bedroom)

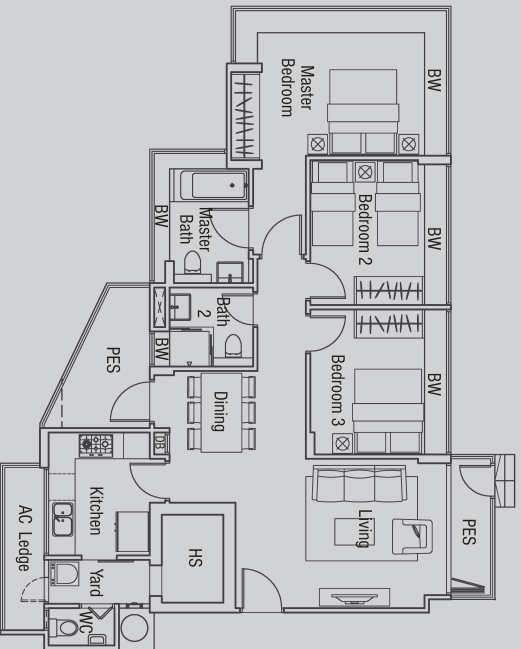
Unit #02-07, #03-07 & #04-07  
Area 1346 sqft / 125 sqm  
\* For #04-07 only



All plans are subject to amendments as approved by the relevant authorities. Floor areas are approximate measurements and subject to final survey.

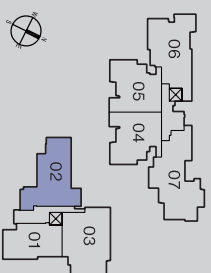
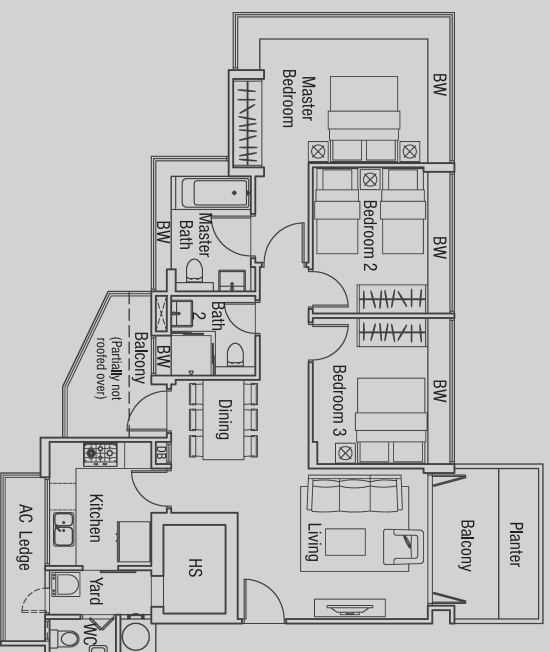
### Type C3-G (3-Bedroom)

Unit #01-02  
Area 1195 sqft / 111 sqm



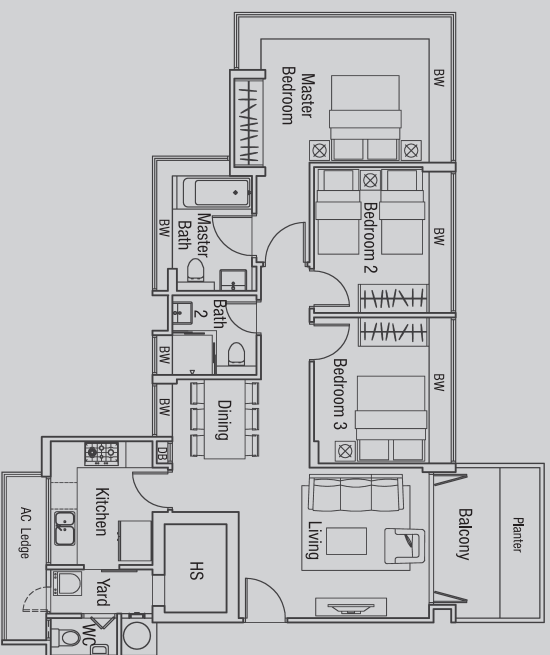
### Type C3-a (3-Bedroom)

Unit #02-02  
Area 1227 sqft / 114 sqm



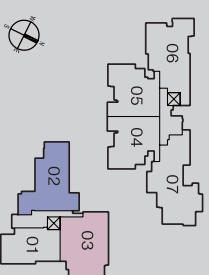
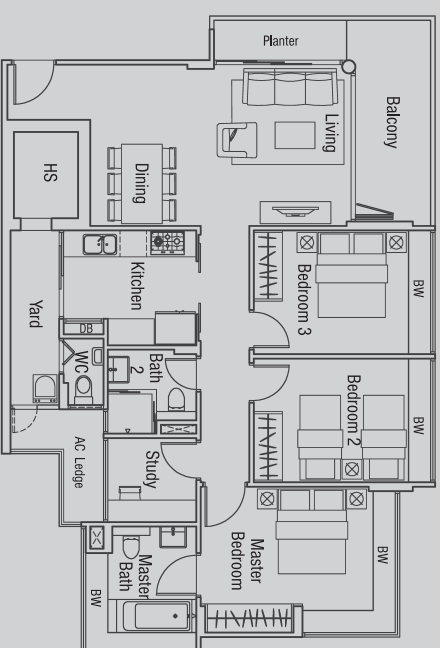
### Type C3 (3-Bedroom)

Unit #03-02 & #04-02  
Area 1173 sqft / 109 sqm



### Type D (3-Bedroom + Study)

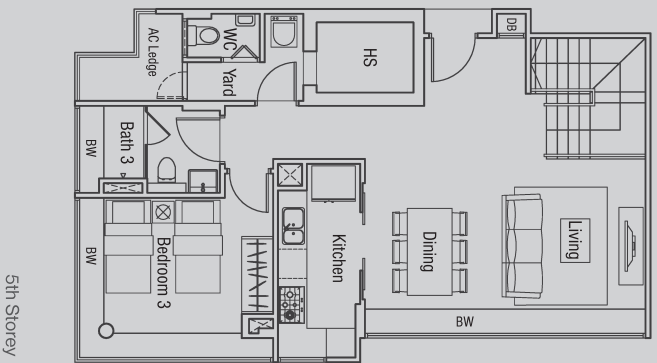
Unit #02-03, #03-03 & #04-03  
Area 1313 sqft / 122 sqm



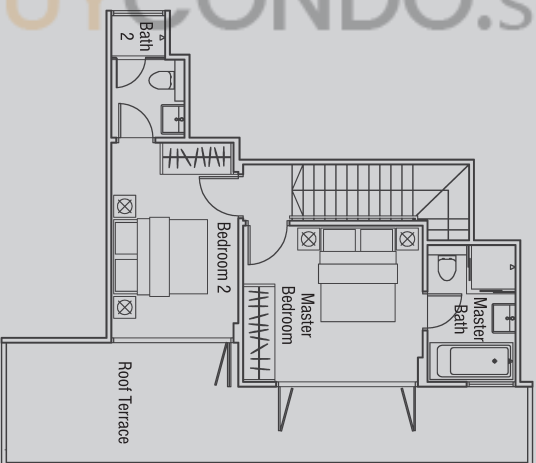
### Type A1-P (3-Bedroom Penthouse)

Unit #05-01

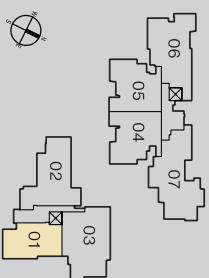
Area 1528 sqft / 142 sqm



5th Storey



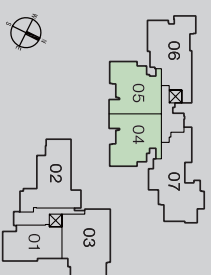
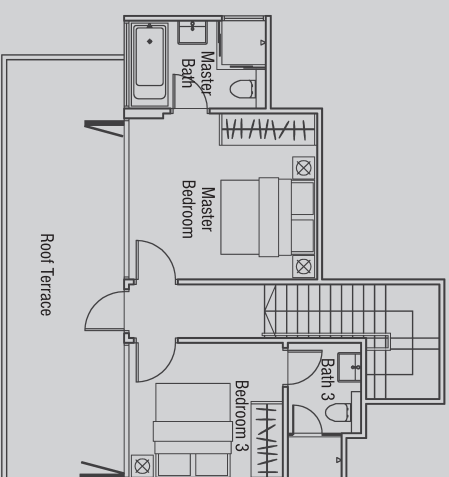
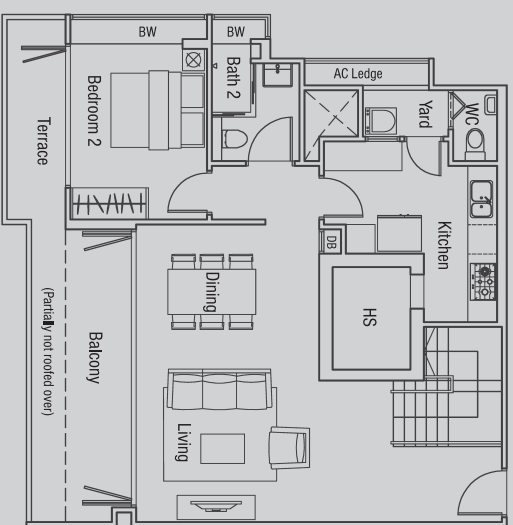
Attic



All plans are subject to amendments as approved by the relevant authorities. Floor areas are approximate measurements and subject to final survey.

### Type B1-P (3-Bedroom Penthouse)

Unit #05-04 & #05-05  
Area 1755 sqft / 163 sqm

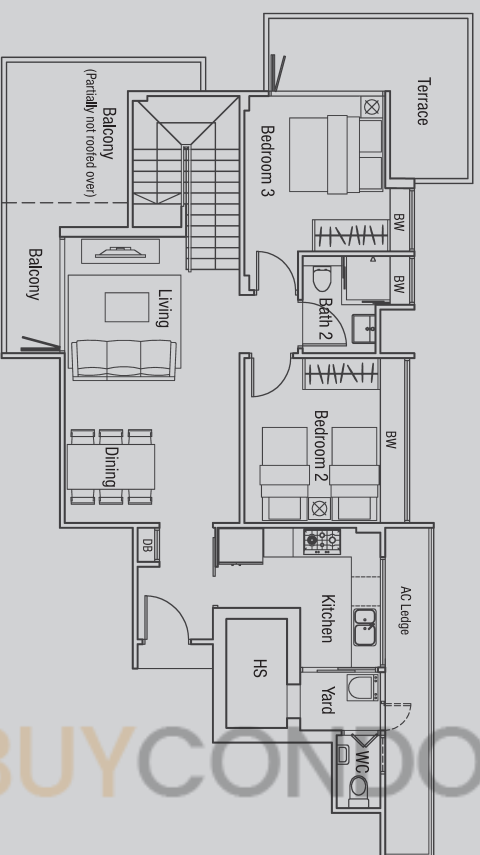


All plans are subject to amendments as approved by the relevant authorities. Floor areas are approximate measurements and subject to final survey.

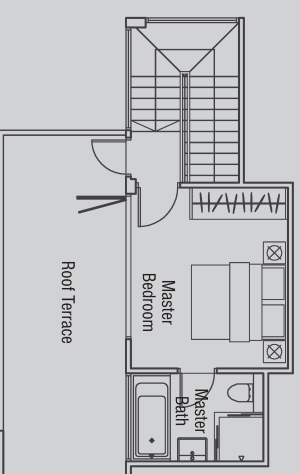


### Type C1-P (3-Bedroom Penthouse)

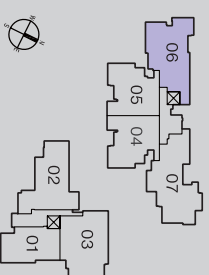
Unit #05-06  
Area 1668 sqft / 155 sqm



5th Storey



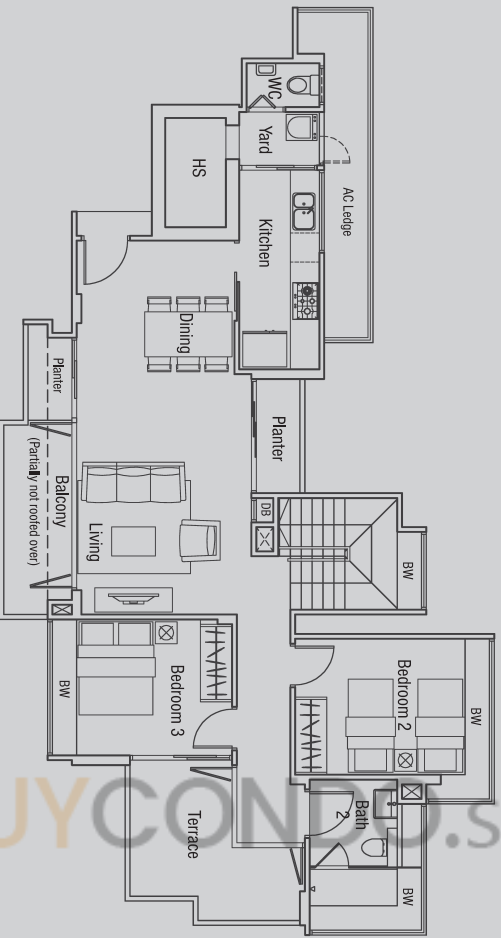
Attic



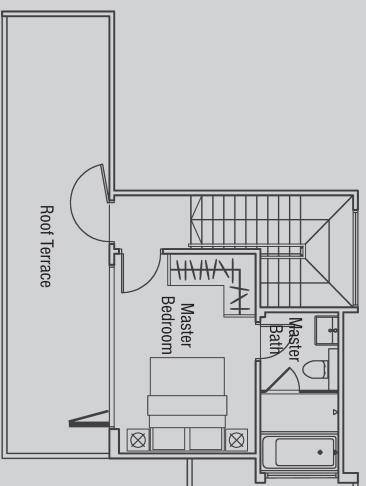
All plans are subject to amendments as approved by the relevant authorities. Floor areas are approximate measurements and subject to final survey.

### Type C2-P (3-Bedroom Penthouse)

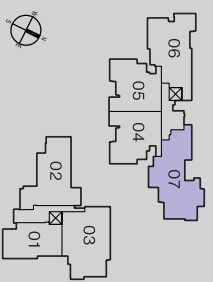
Unit #05-07  
Area 1 765 sqft / 164 sqm



5th Storey



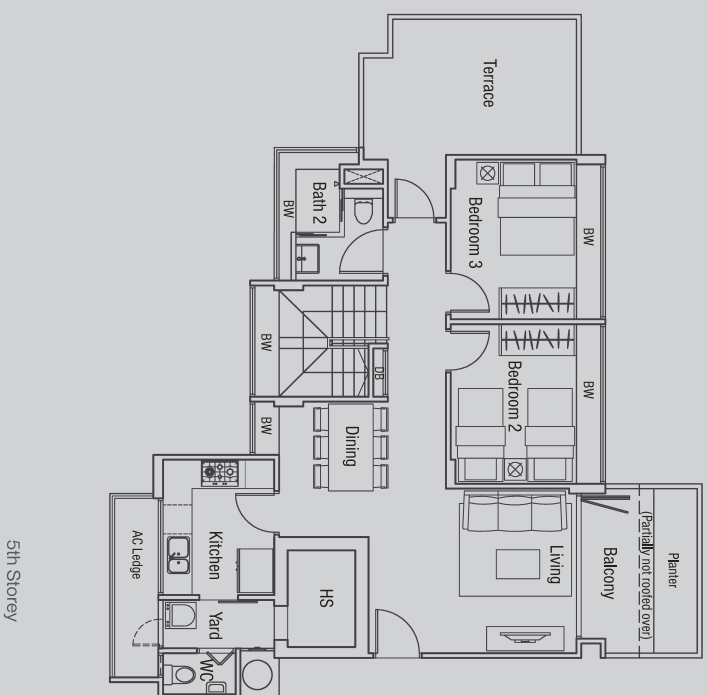
Attic



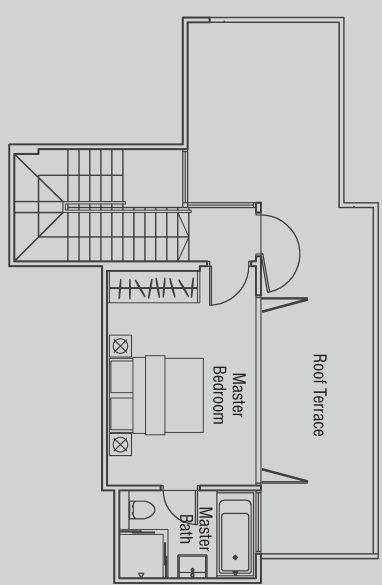
All plans are subject to amendments as approved by the relevant authorities. Floor areas are approximate measurements and subject to final survey.

### Type C3-P (3-Bedroom Penthouse)

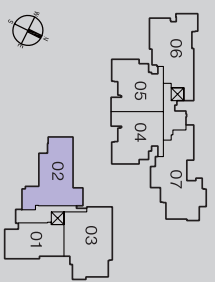
Unit #05-02  
Area 1787 sqft / 166 sqm



5th Storey



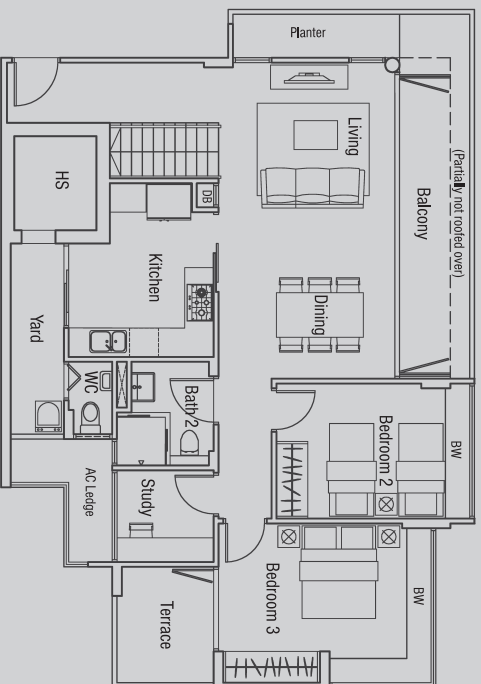
Attic



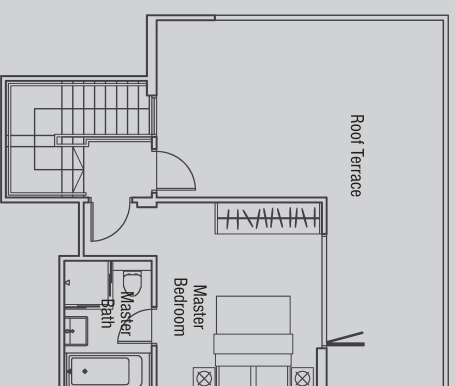
All plans are subject to amendments as approved by the relevant authorities. Floor areas are approximate measurements and subject to final survey.

### Type D-P (3-Bedroom + Study/Penthouse)

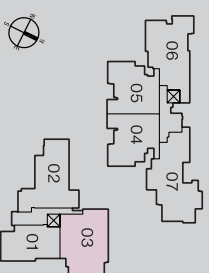
Unit #05-03  
Area 1959 sqft / 182 sqm



5th Storey



Attic



All plans are subject to amendments as approved by the relevant authorities. Floor areas are approximate measurements and subject to final survey.