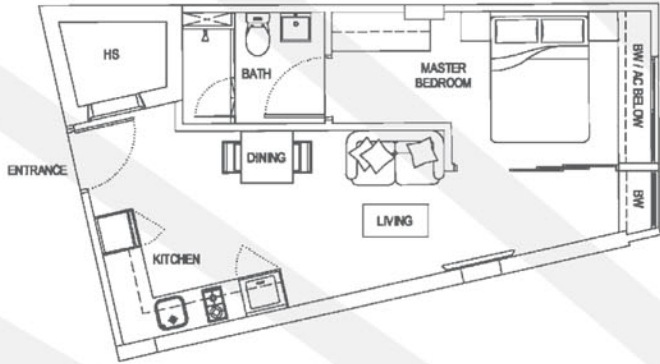


Type A1 (1-Bedroom)

Unit #02-38, #03-38  
Area 409 sqft / 38 sqm



Type A2 (1-Bedroom)

Unit #02-34, #03-34  
Area 452 sqft / 42 sqm



Type A3 (1-Bedroom)

Unit #02-33, #03-33  
Area 495 sqft / 46 sqm



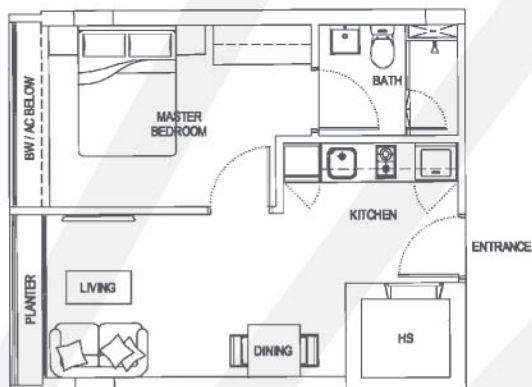
Type A4 (1-Bedroom)

Unit #02-12, #03-12  
Area 452 sqft / 42 sqm



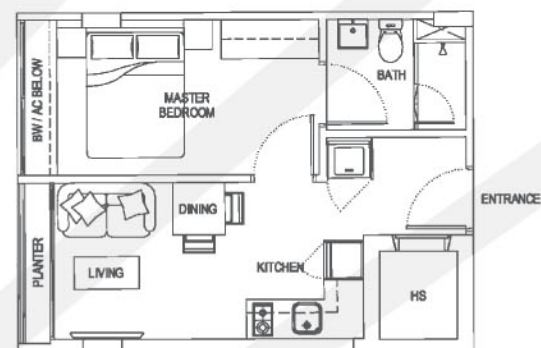
### Type A5 (1-Bedroom)

Unit #02-13, #03-13, #02-14, #03-14  
Area 420 sqft / 39 sqm



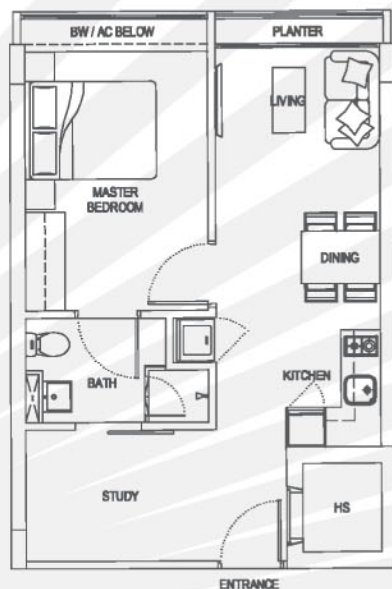
### Type A6 (1-Bedroom)

Unit #02-15, #03-15  
Area 366 sqft / 34 sqm



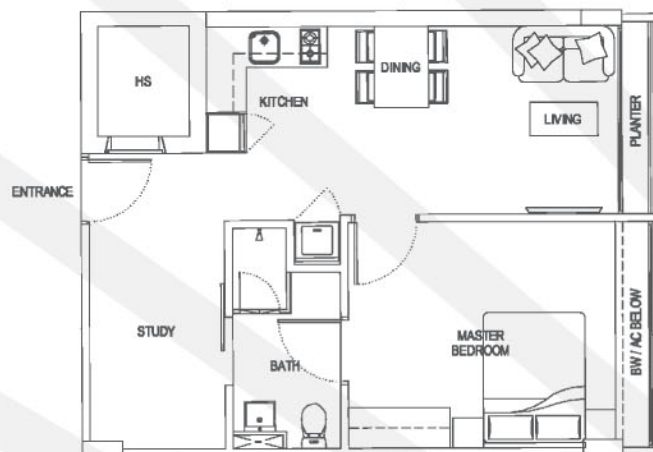
### Type B1 (1-Bedroom + Study)

Unit #02-03, #03-03, #02-04, #03-04, #02-05, #03-05, #02-06, #03-06, #02-07, #03-07, #02-10, #03-10, #02-11, #03-11, #02-17, #03-17, #02-20, #03-20, #02-21, #03-21, #02-22, #03-22, #02-23, #03-23, #02-26, #03-26, #02-28, #03-28, #02-30, #03-30, #04-30, #02-31, #03-31, #02-32, #03-32  
Area 517 sqft / 48 sqm



### Type B2 (1-Bedroom + Study)

Unit #02-02, #03-02, #02-08, #03-08  
Area 581 sqft / 54 sqm



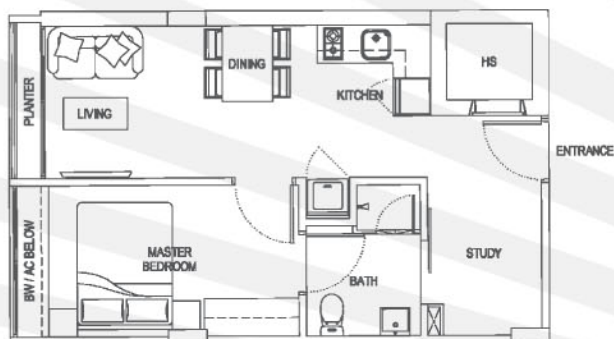
### Type B3 (1-Bedroom + Study)

Unit #02-09, #03-09  
Area 570 sqft / 53 sqm



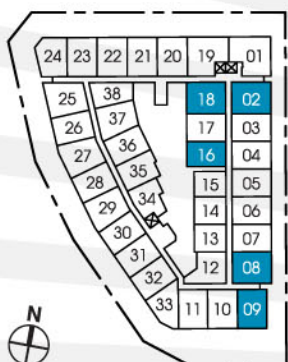
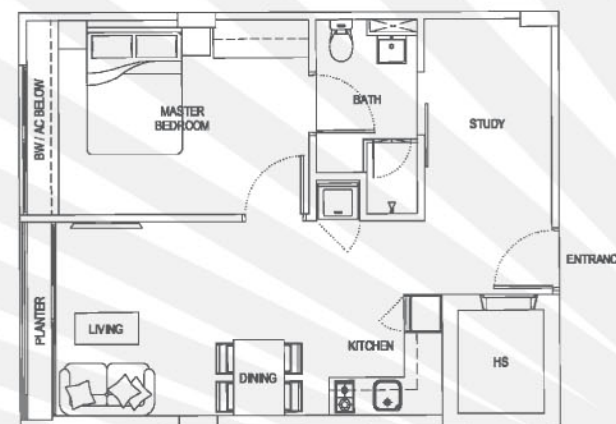
### Type B4 (1-Bedroom + Study)

Unit #02-16, #03-16  
Area 463 sqft / 43 sqm



### Type B5 (1-Bedroom + Study)

Unit #02-18, #03-18  
Area 581 sqft / 54 sqm





## Type B6 (1-Bedroom + Study)

Unit #02-24, #03-24  
Area 581 sqft / 54 sqm



## Type B7 (1-Bedroom + Study)

Unit #02-25, #03-25  
Area 603 sqft / 56 sqm



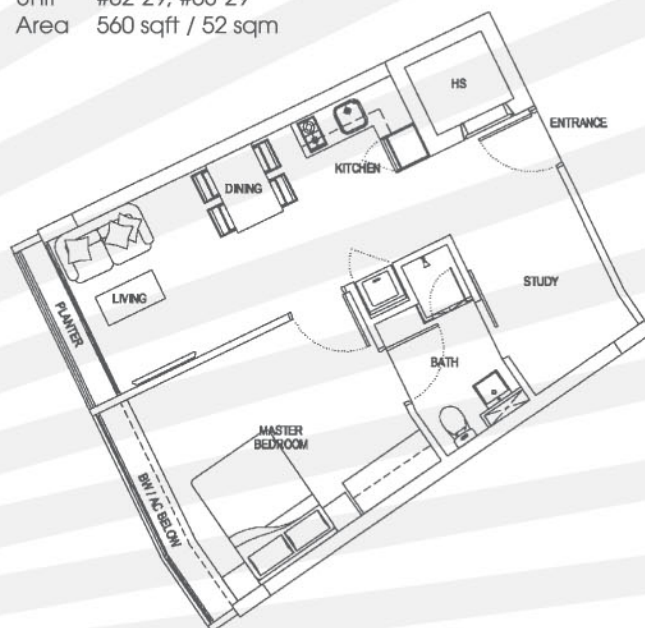
## Type B8 (1-Bedroom + Study)

Unit #02-27, #03-27  
Area 592 sqft / 55 sqm



## Type B9 (1-Bedroom + Study)

Unit #02-29, #03-29  
Area 560 sqft / 52 sqm



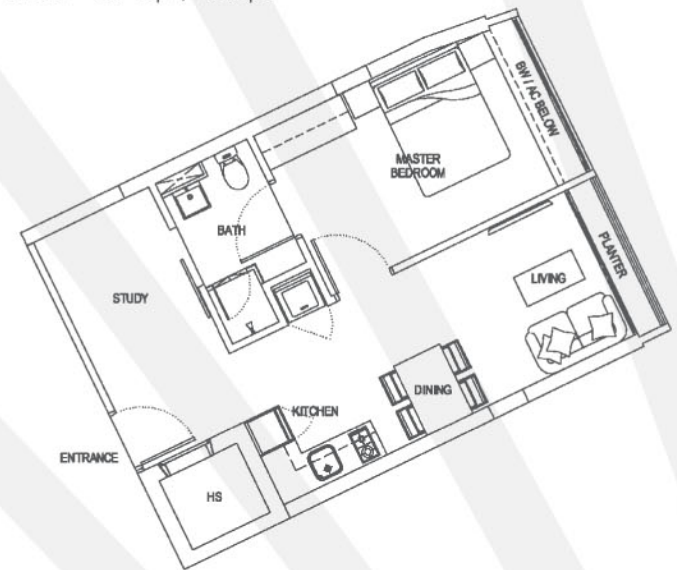
### Type B10 (1-Bedroom + Study)

Unit #02-35, #03-35  
Area 495 sqft / 46 sqm



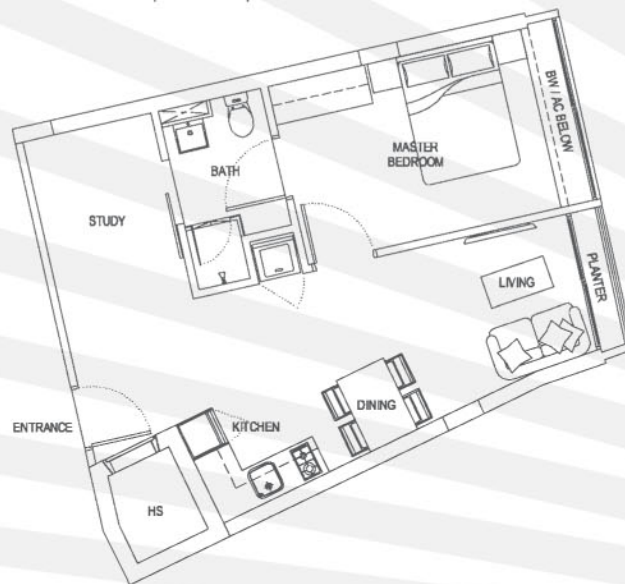
### Type B11 (1-Bedroom + Study)

Unit #02-36, #03-36  
Area 517 sqft / 48 sqm



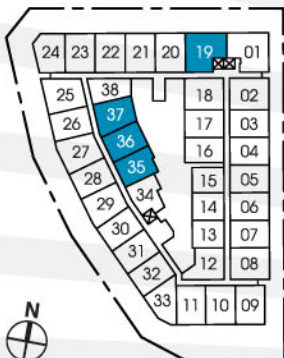
### Type B12 (1-Bedroom + Study)

Unit #02-37, #03-37  
Area 549 sqft / 51 sqm



### Type C1 (2-Bedroom)

Unit #02-19, #03-19  
Area 689 sqft / 64 sqm



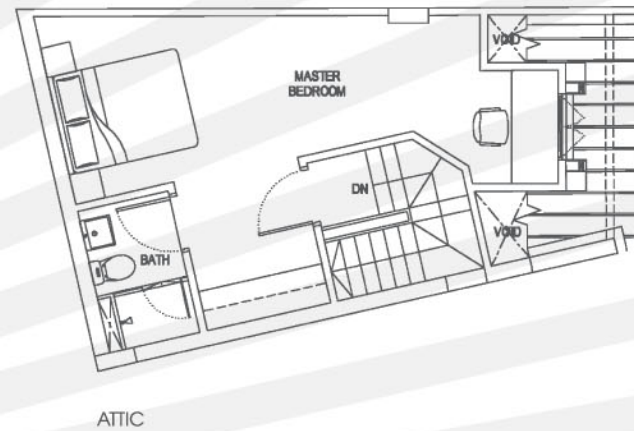
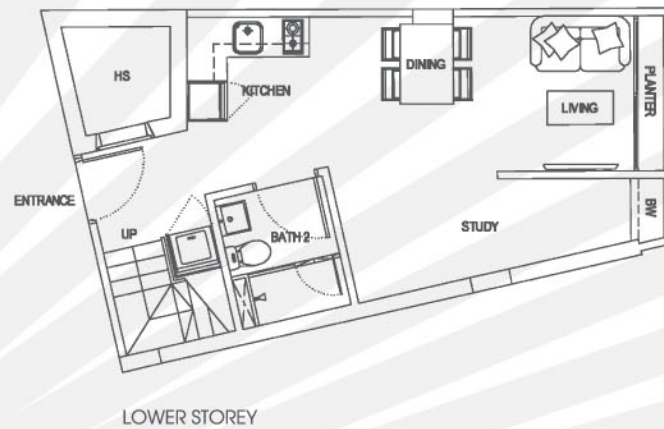
## Type D1 (2-Bedroom + Study)

Unit #02-01, #03-01  
Area 732 sqft / 68 sqm



## Type PA1 (1-Bedroom + Study Penthouse)

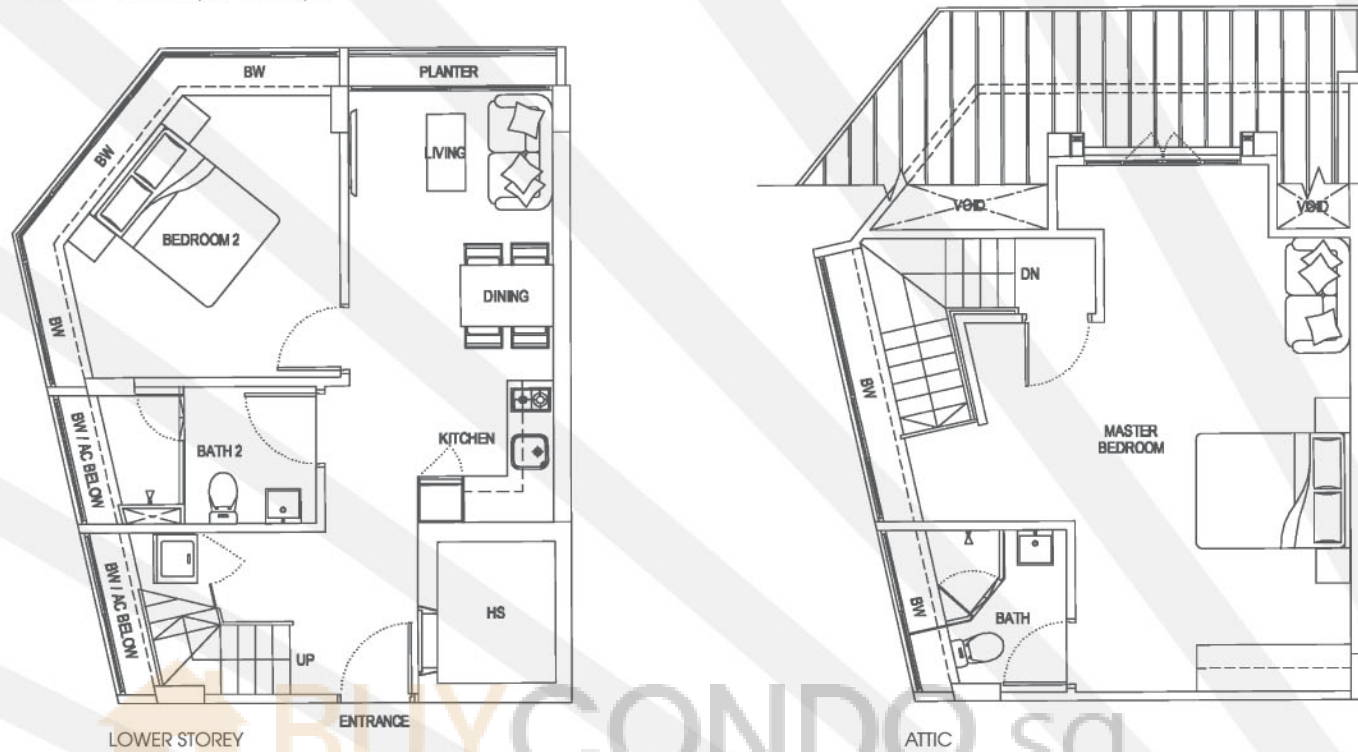
Unit #04-38  
Area 797 sqft / 74 sqm





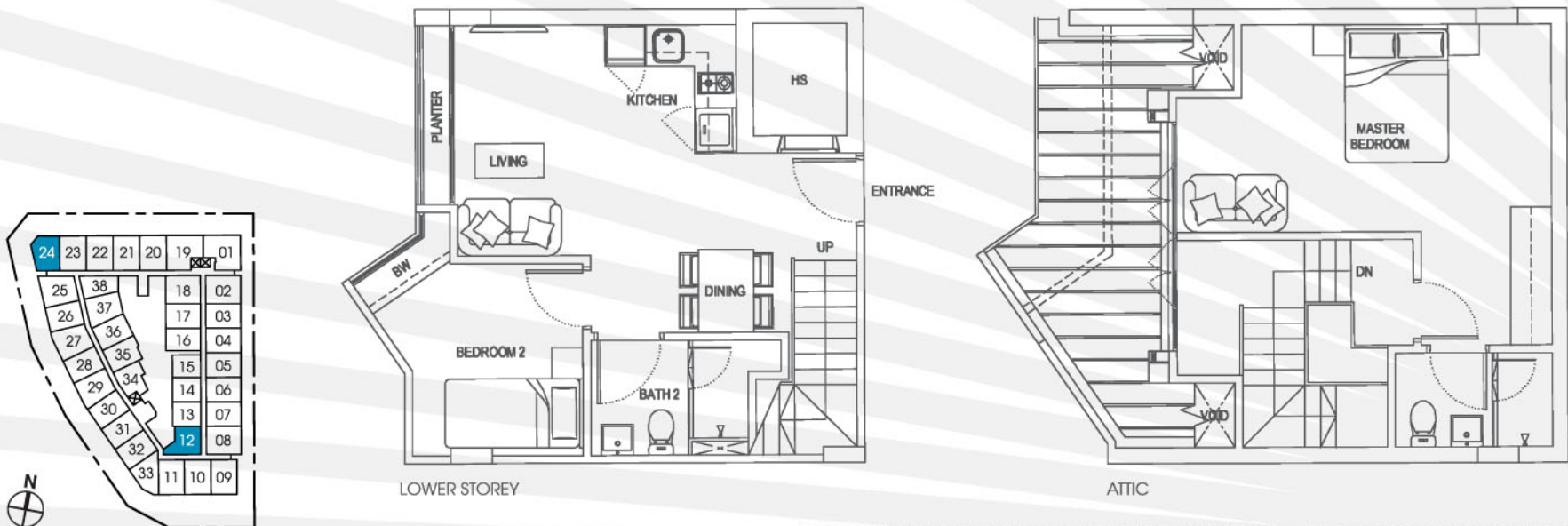
### Type PB1 (2-Bedroom Penthouse)

Unit #04-24  
Area 1,098 sqft / 102 sqm



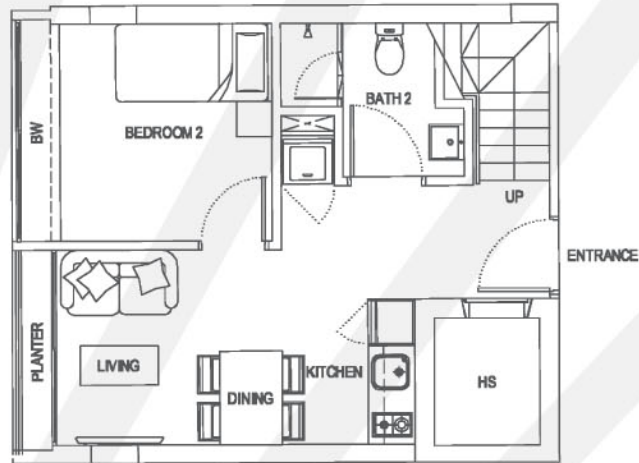
### Type PB2 (2-Bedroom Penthouse)

Unit #04-12  
Area 904 sqft / 84 sqm

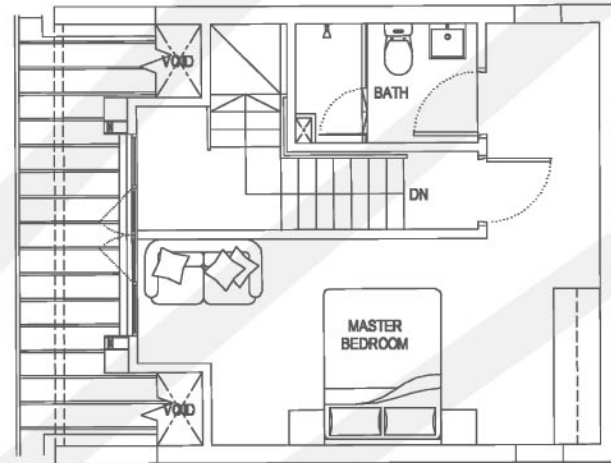


## Type PB3 (2-Bedroom Penthouse)

Unit #04-13, #04-14  
Area 829 sqft / 77 sqm



LOWER STOREY

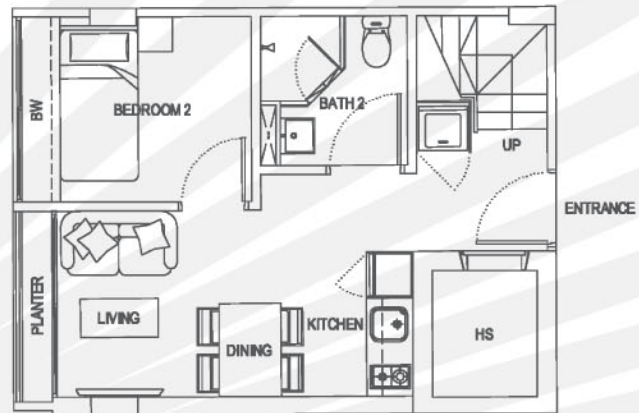


ATTIC

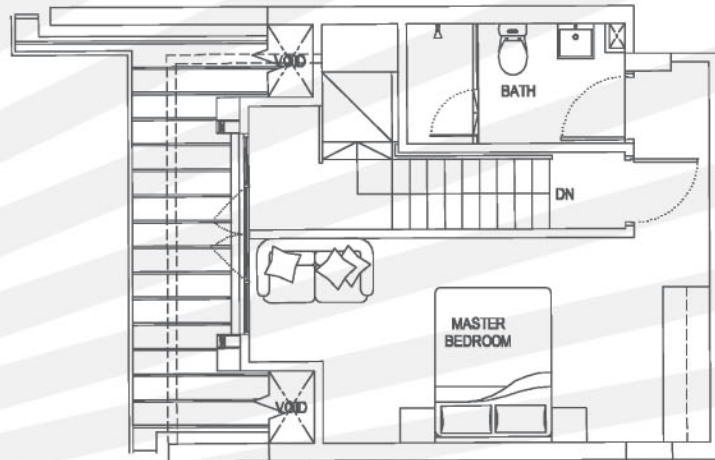


## Type PB4 (2-Bedroom Penthouse)

Unit #04-15  
Area 775 sqft / 72 sqm



LOWER STOREY



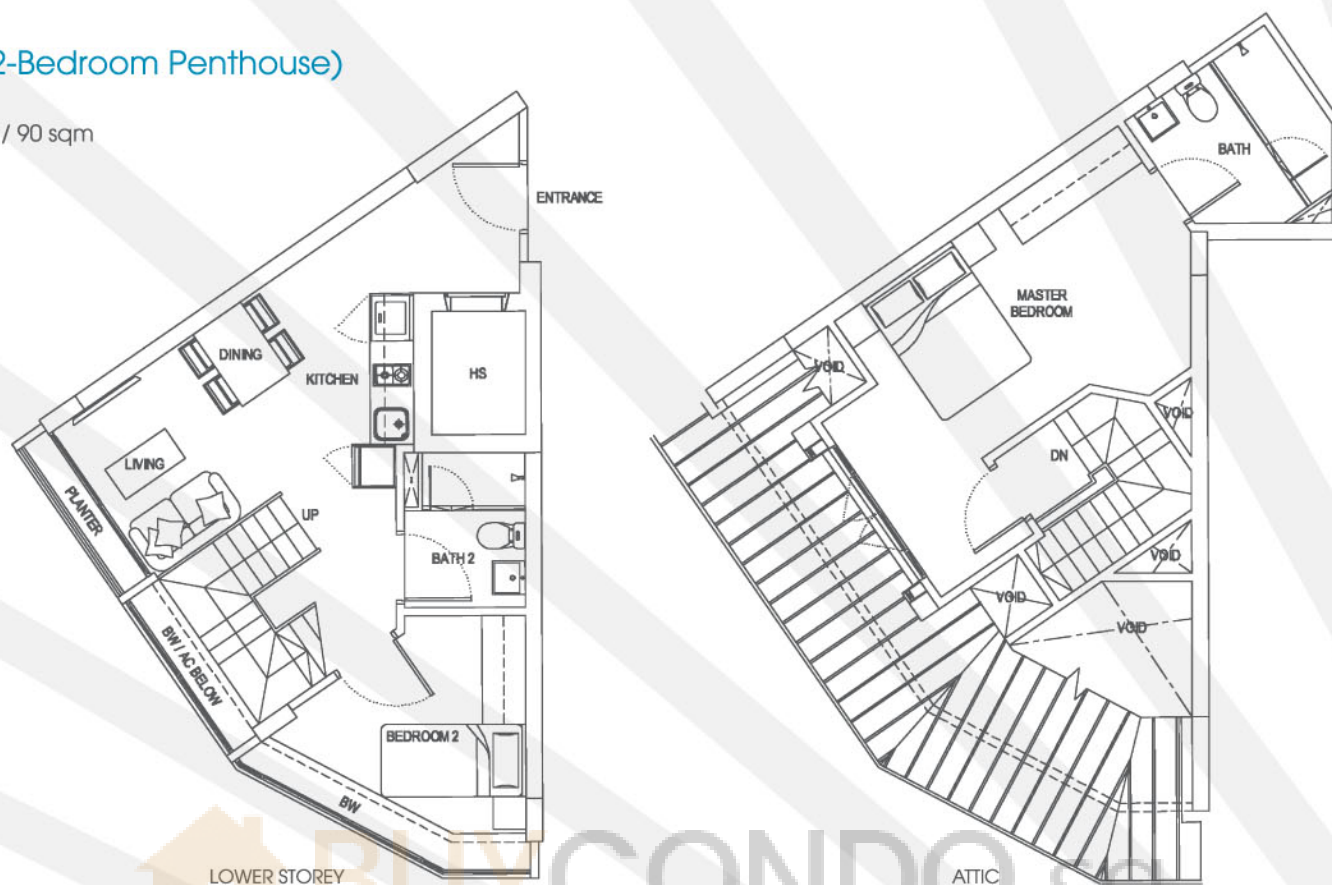
ATTIC





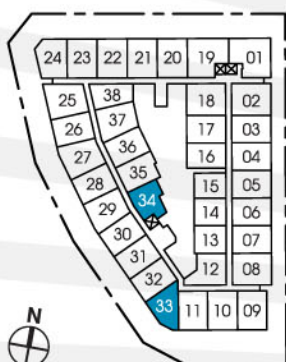
## Type PB5 (2-Bedroom Penthouse)

Unit #04-33  
Area 969 sqft / 90 sqm



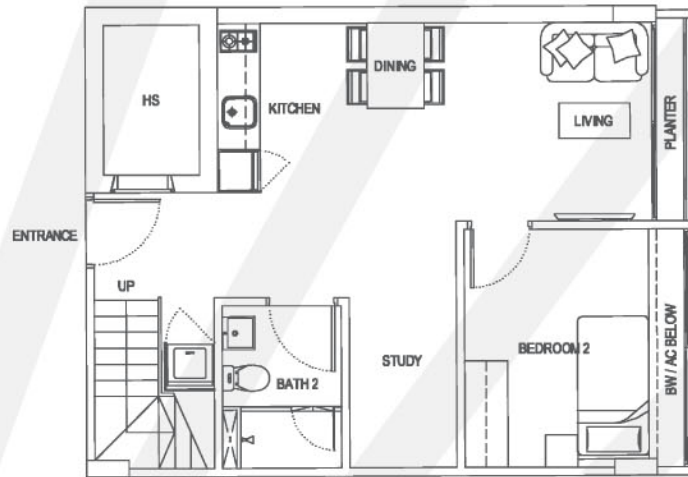
## Type PB6 (2-Bedroom Penthouse)

Unit #04-34  
Area 926 sqft / 86 sqm

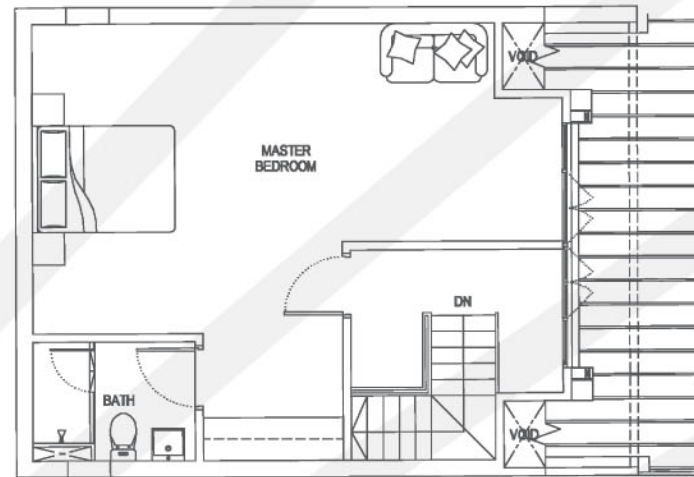


## Type PC1 (2-Bedroom + Study Penthouse)

Unit #04-02, #04-08  
Area 1,163 sqft / 108 sqm



LOWER STOREY

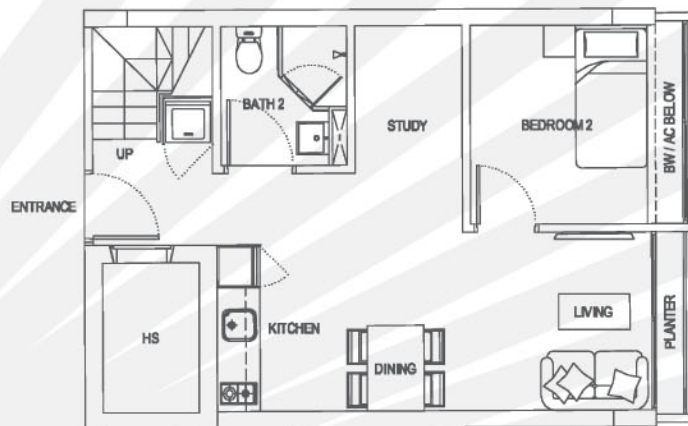


ATTIC

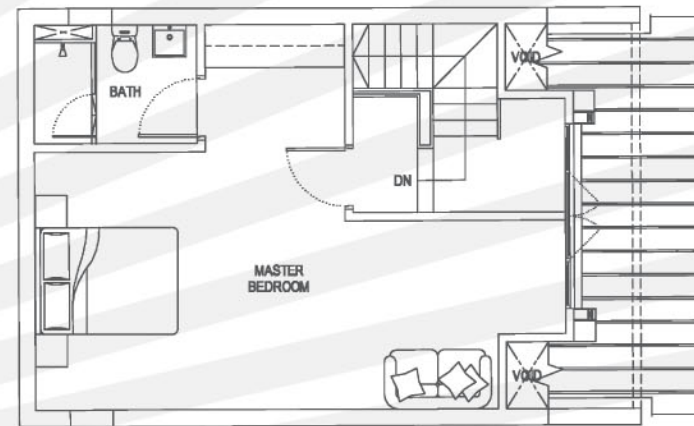


## Type PC2 (2-Bedroom + Study Penthouse)

Unit #04-03, #04-04, #04-05, #04-06, #04-07, #04-17  
Area 1,023 sqft / 95 sqm



LOWER STOREY

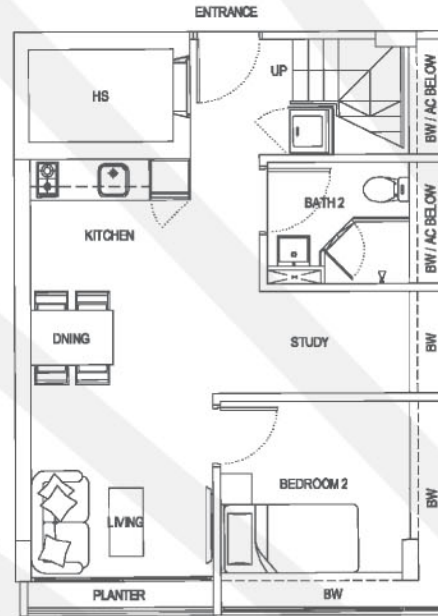


ATTIC

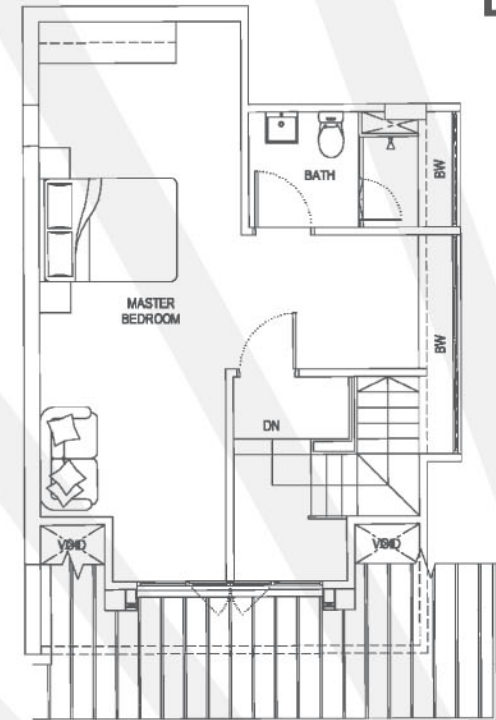


## Type PC3 (2-Bedroom + Study Penthouse)

Unit #04-09  
Area 1,119 sqft / 104 sqm



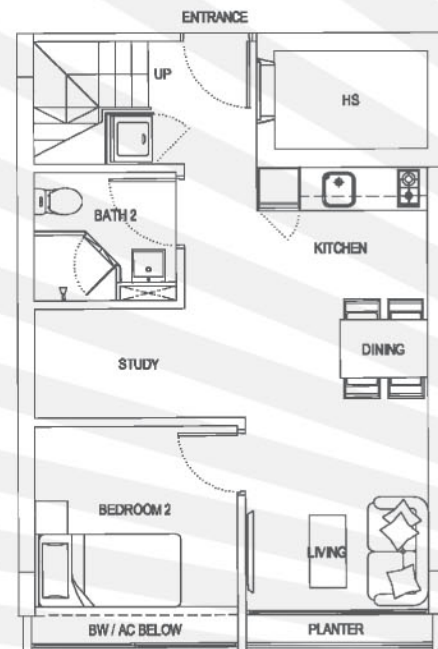
LOWER STOREY



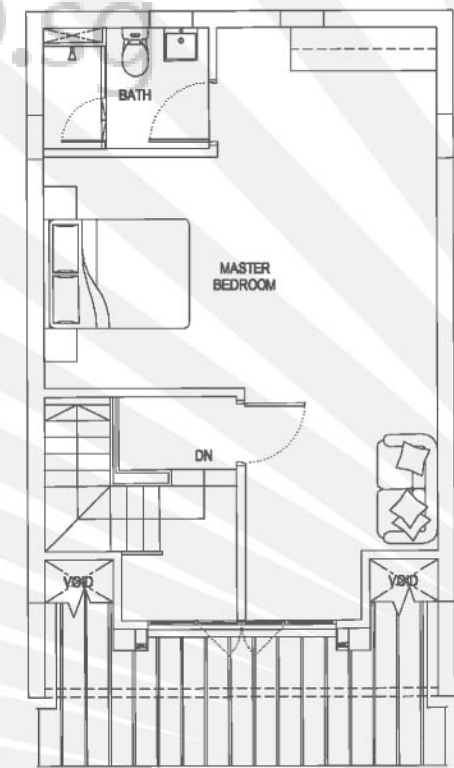
ATTIC

## Type PC4 (2-Bedroom + Study Penthouse)

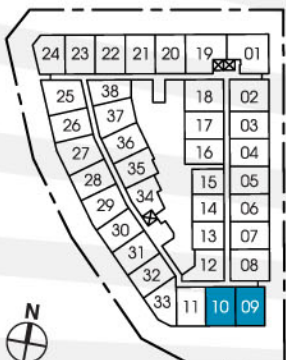
Unit #04-10  
Area 1,076 sqft / 100 sqm



LOWER STOREY



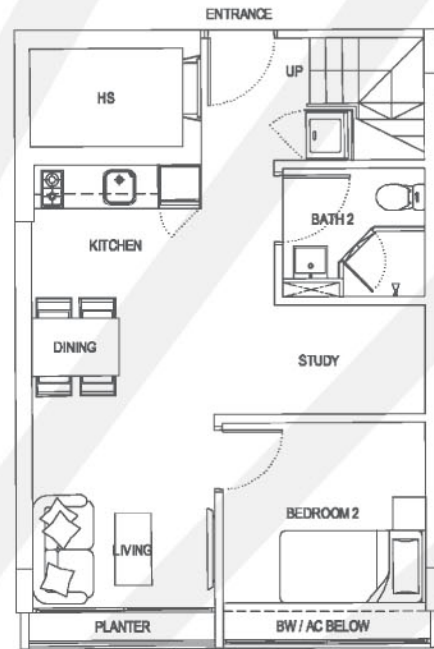
ATTIC



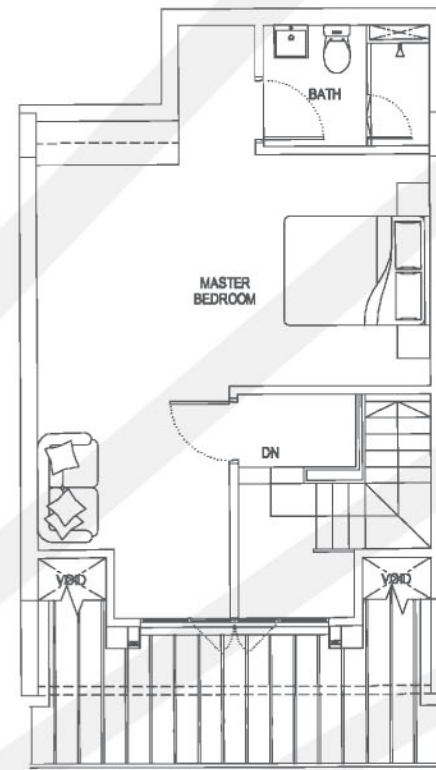


## Type PC5 (2-Bedroom + Study Penthouse)

Unit #04-11  
Area 1,044 sqft / 97 sqm



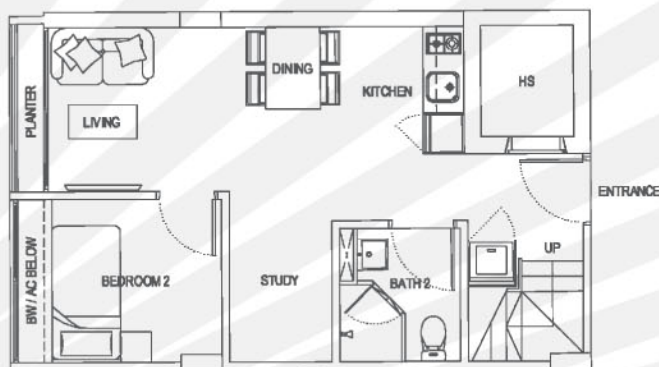
LOWER STOREY



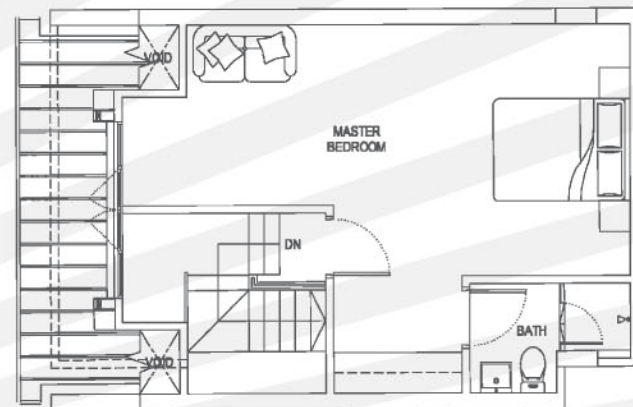
ATTIC

## Type PC6 (2-Bedroom + Study Penthouse)

Unit #04-16  
Area 958 sqft / 89 sqm



LOWER STOREY



ATTIC

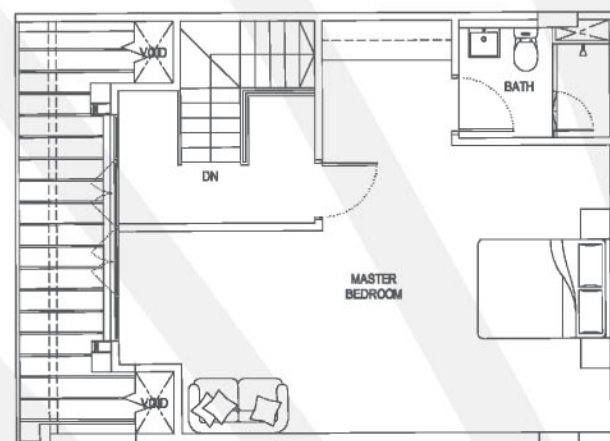


## Type PC7 (2-Bedroom + Study Penthouse)

Unit #04-18  
Area 1,163 sqft / 108 sqm



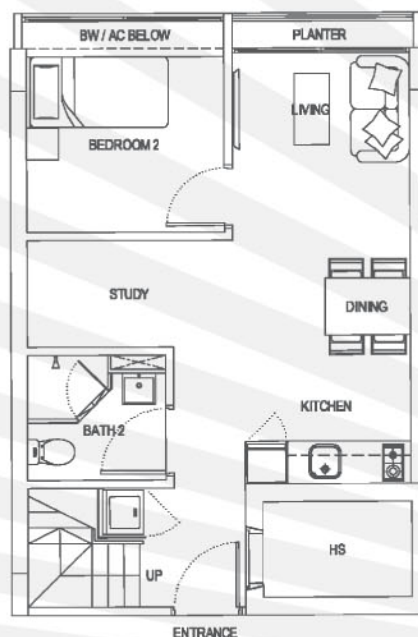
LOWER STOREY



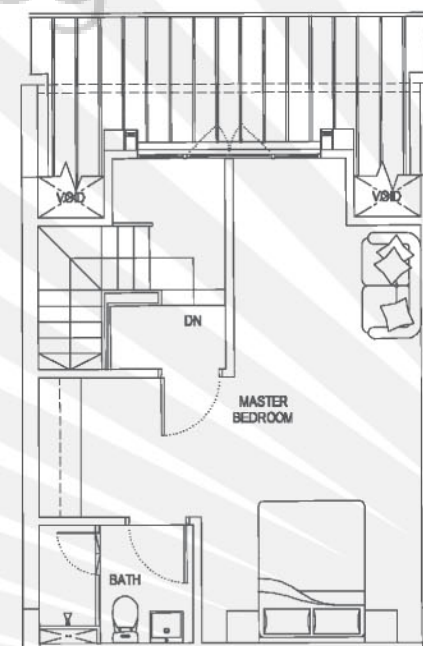
ATTIC

## Type PC8 (2-Bedroom + Study Penthouse)

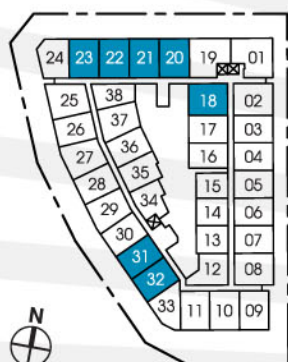
Unit #04-20, #04-21, #04-22, #04-23, #04-31, #04-32  
Area 990 sqft / 92 sqm



LOWER STOREY

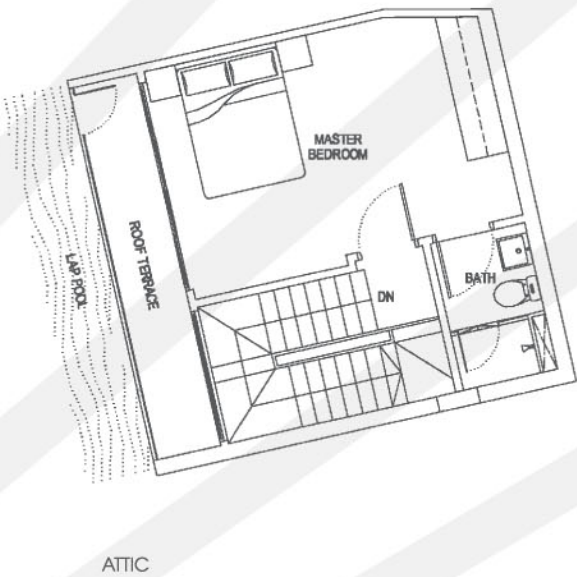
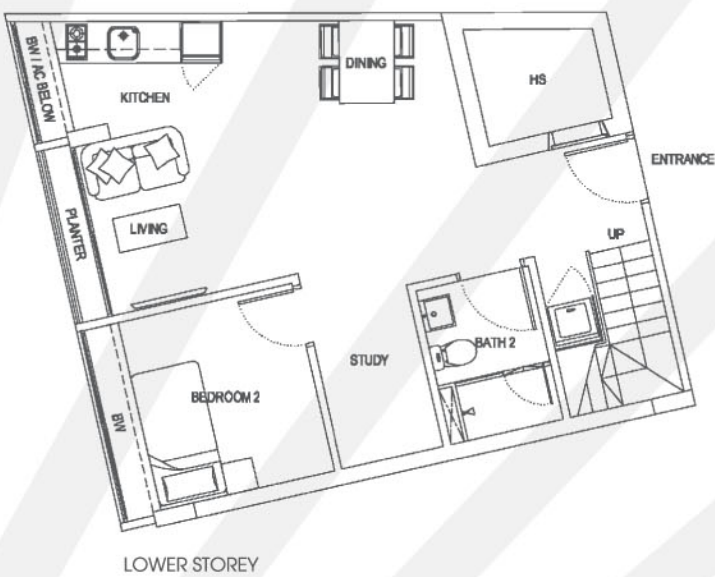


ATTIC



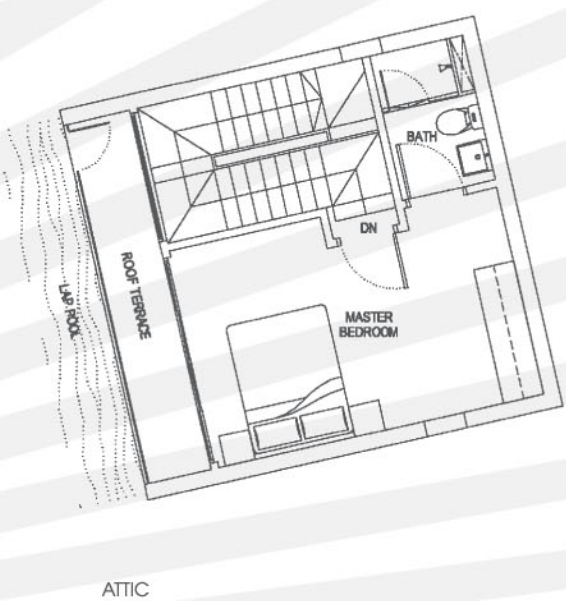
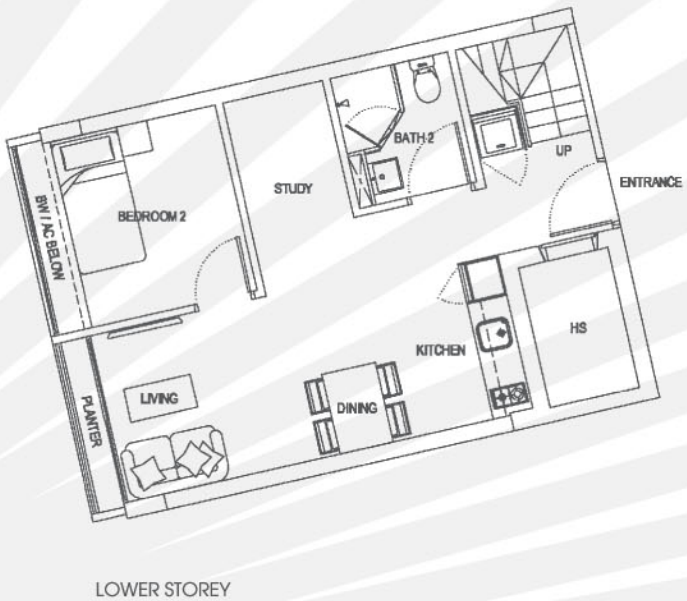
Type PC9 (2-Bedroom + Study Penthouse)

Unit #04-25  
Area 980 sqft / 91 sqm



Type PC10 (2-Bedroom + Study Penthouse)

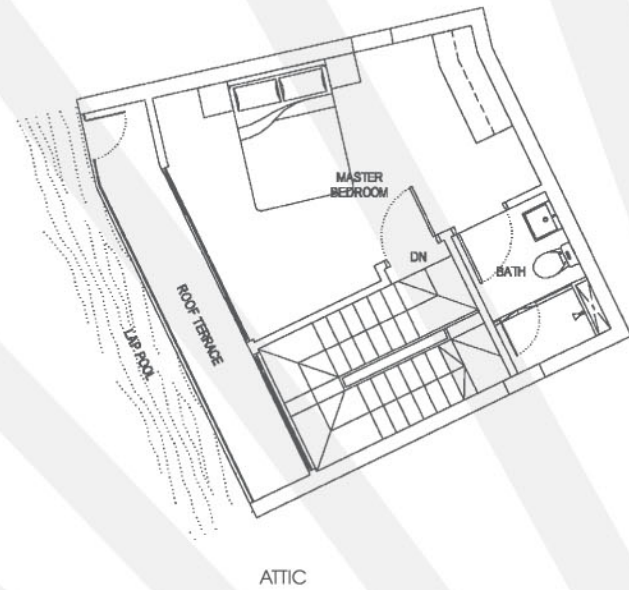
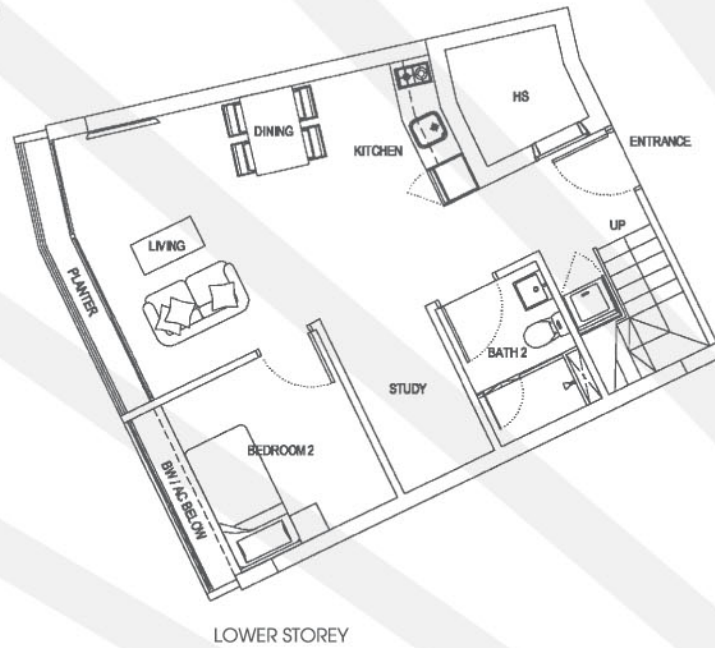
Unit #04-26, #04-28  
Area 883 sqft / 82 sqm





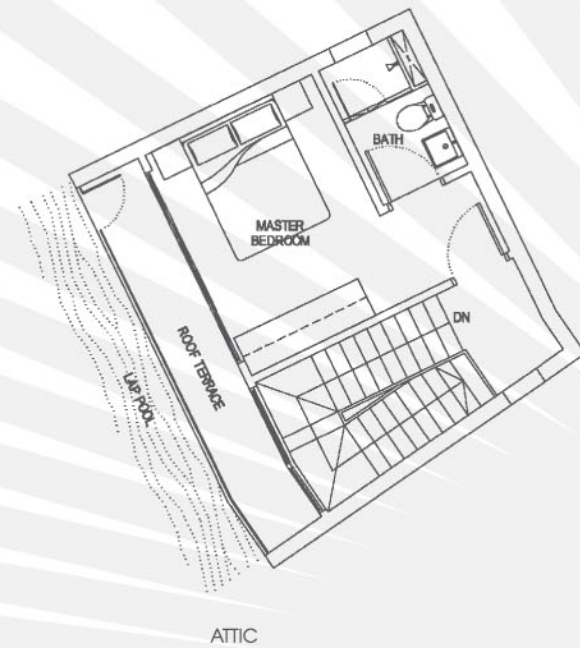
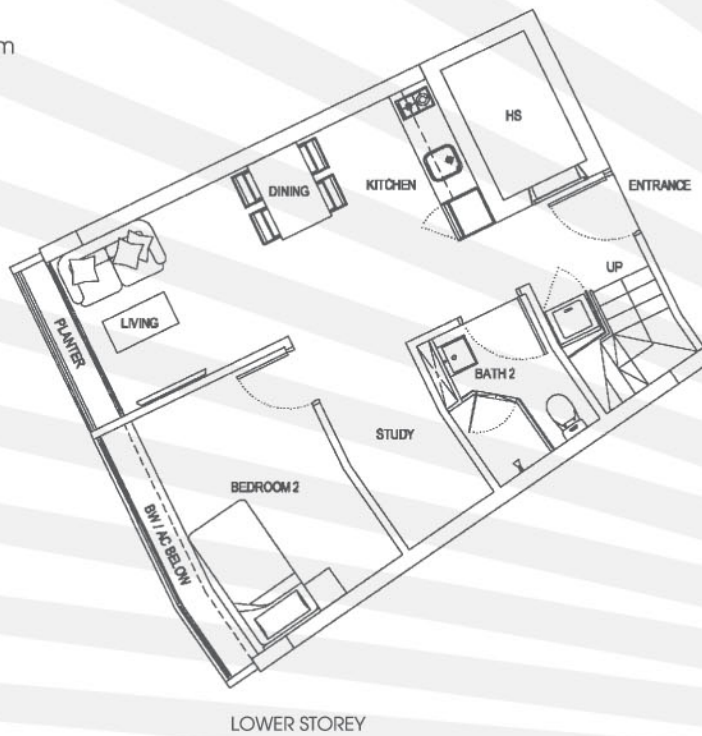
## Type PC11 (2-Bedroom + Study Penthouse)

Unit #04-27  
Area 980 sqft / 91 sqm



## Type PC12 (2-Bedroom + Study Penthouse)

Unit #04-29  
Area 904 sqft / 84 sqm

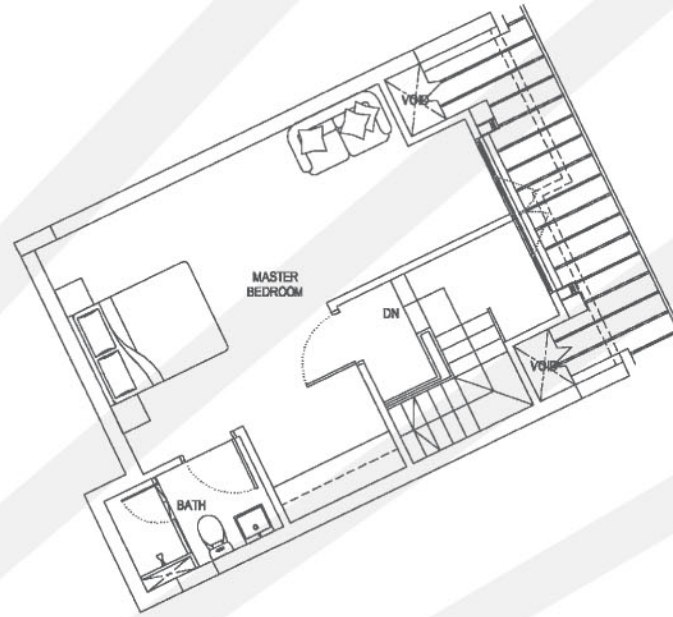


## Type PC13 (2-Bedroom + Study Penthouse)

Unit #04-35  
Area 958 sqft / 89 sqm



LOWER STOREY



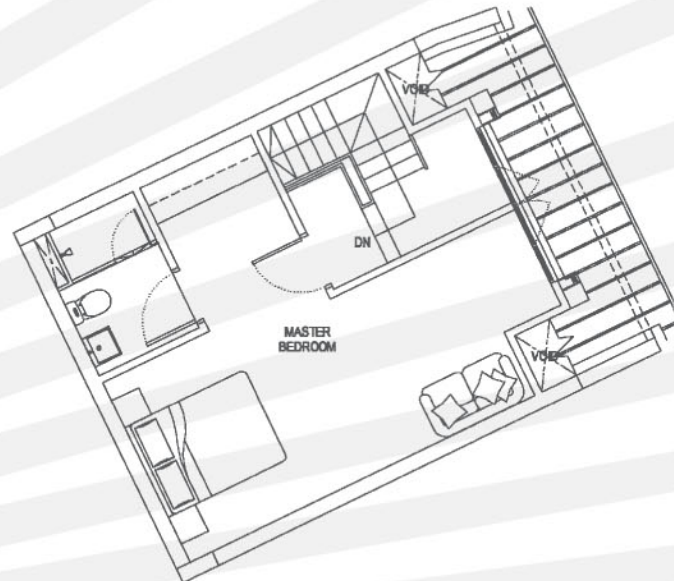
ATTIC

## Type PC14 (2-Bedroom + Study Penthouse)

Unit #04-36  
Area 980 sqft / 91 sqm



LOWER STOREY



ATTIC

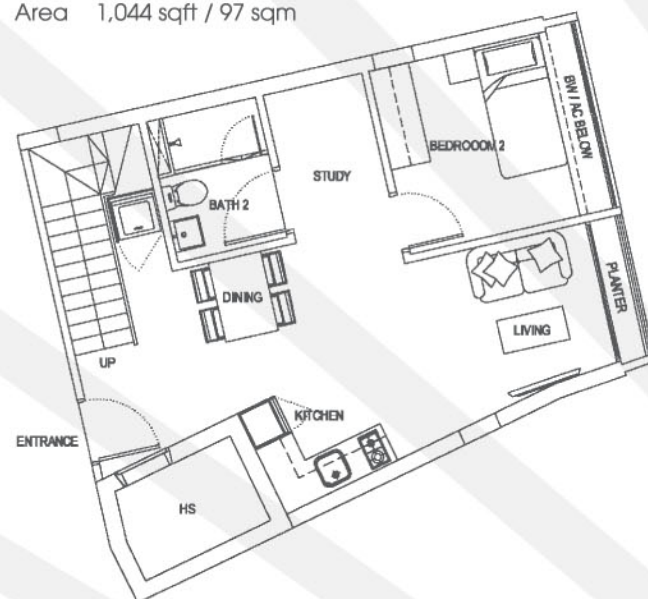




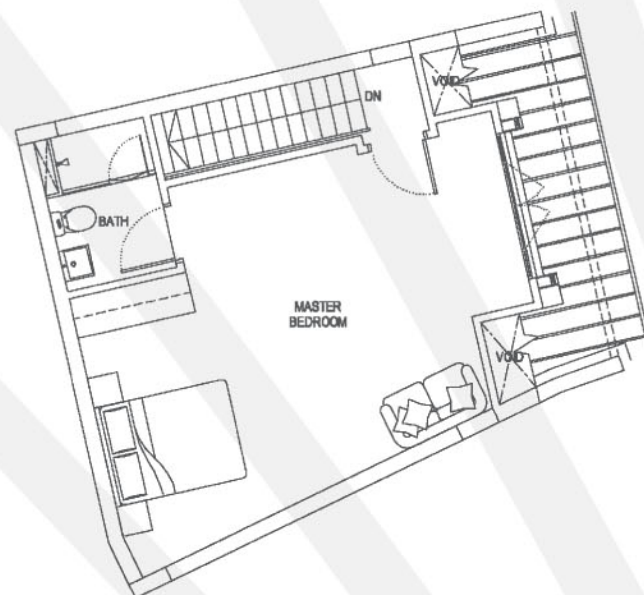
## Type PC15 (2-Bedroom + Study Penthouse)

Unit #04-37

Area 1,044 sqft / 97 sqm



LOWER STOREY

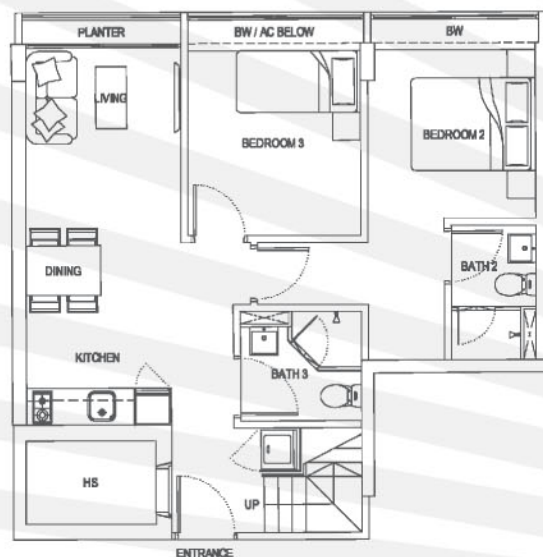


ATTIC

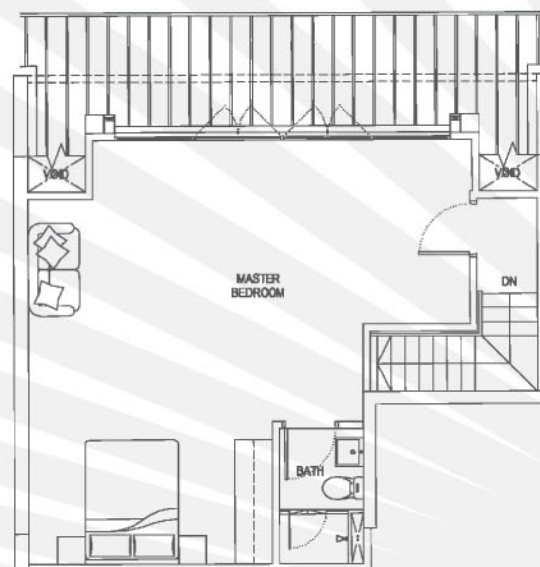
## Type PD1 (3-Bedroom Penthouse)

Unit #04-19

Area 1,313 sqft / 122 sqm



LOWER STOREY



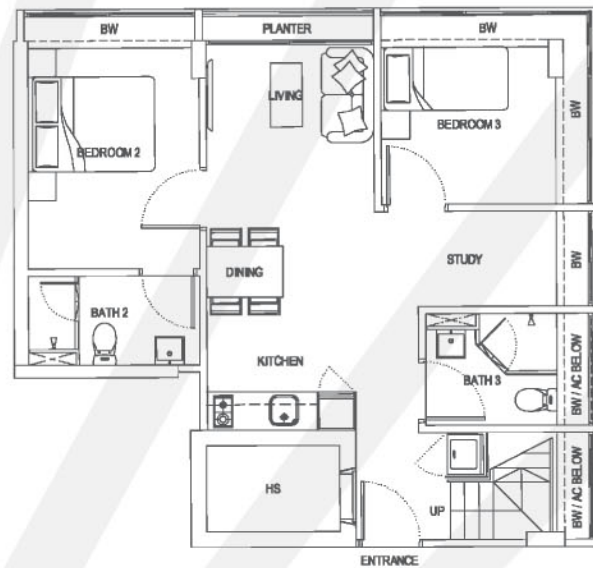
ATTIC



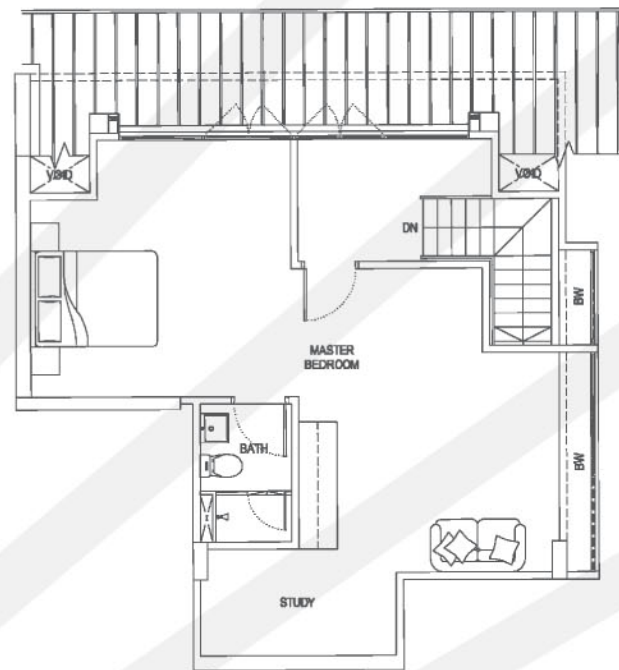


Type PE1 (3-Bedroom + 2-Study Penthouse)

Unit #04-01  
Area 1,453 sqft / 135 sqm



LOWER STOREY



ATTIC

BUYCONDO.sg

