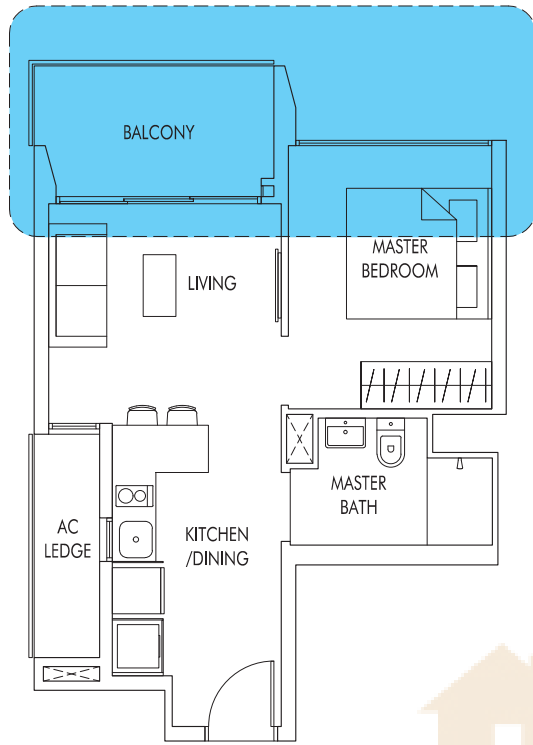




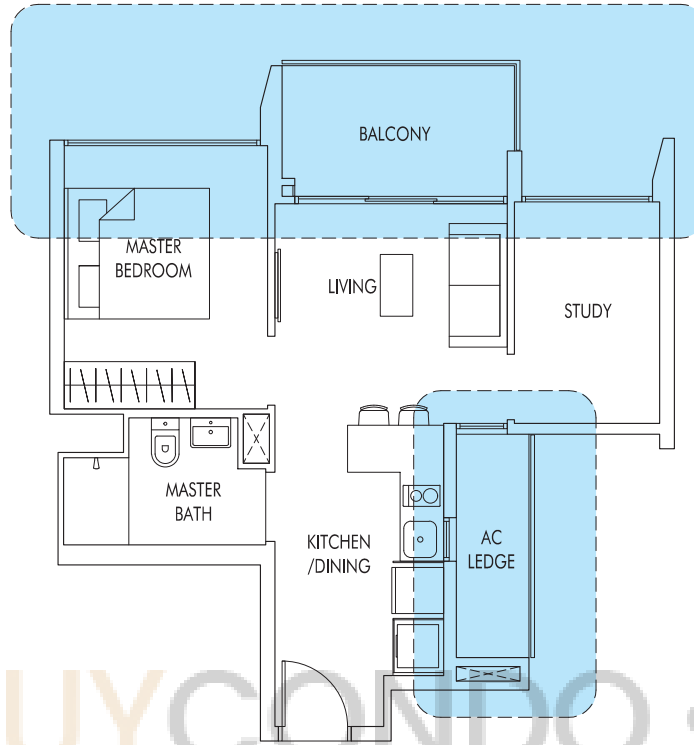
1 Bedroom / 1 + Study



TYPE A1

46 sq m | 495 sq ft

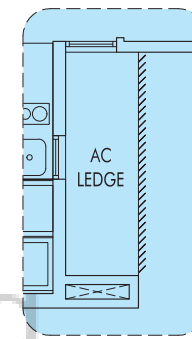
#02-11 to #25-11 (mirror)
#02-15 to #25-15



TYPE A2

53 sq m | 570 sq ft

#02-01 to #23-01
#02-05 to #24-05 (mirror)
#02-06 to #25-06
#02-10 to #25-10 (mirror)

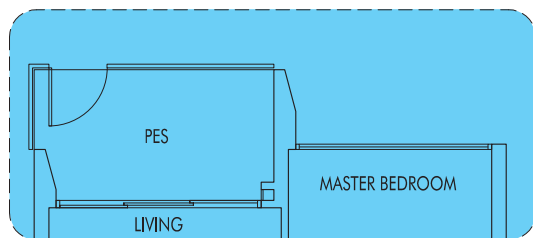


TYPE A2a

53 sq m | 570 sq ft

WITH VERTICAL LOUVERS
AS PER DSTA REQUIREMENT

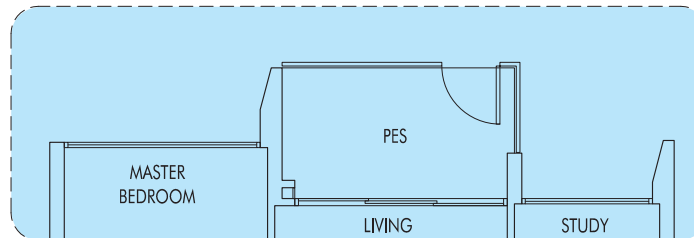
#24-01



TYPE A1P

46 sq m | 495 sq ft
(including PES of 6 sq m/65 sq ft)

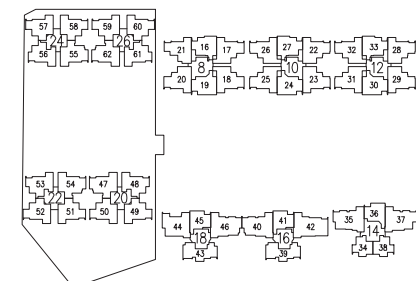
#01-11 (mirror)
#01-15



TYPE A2P

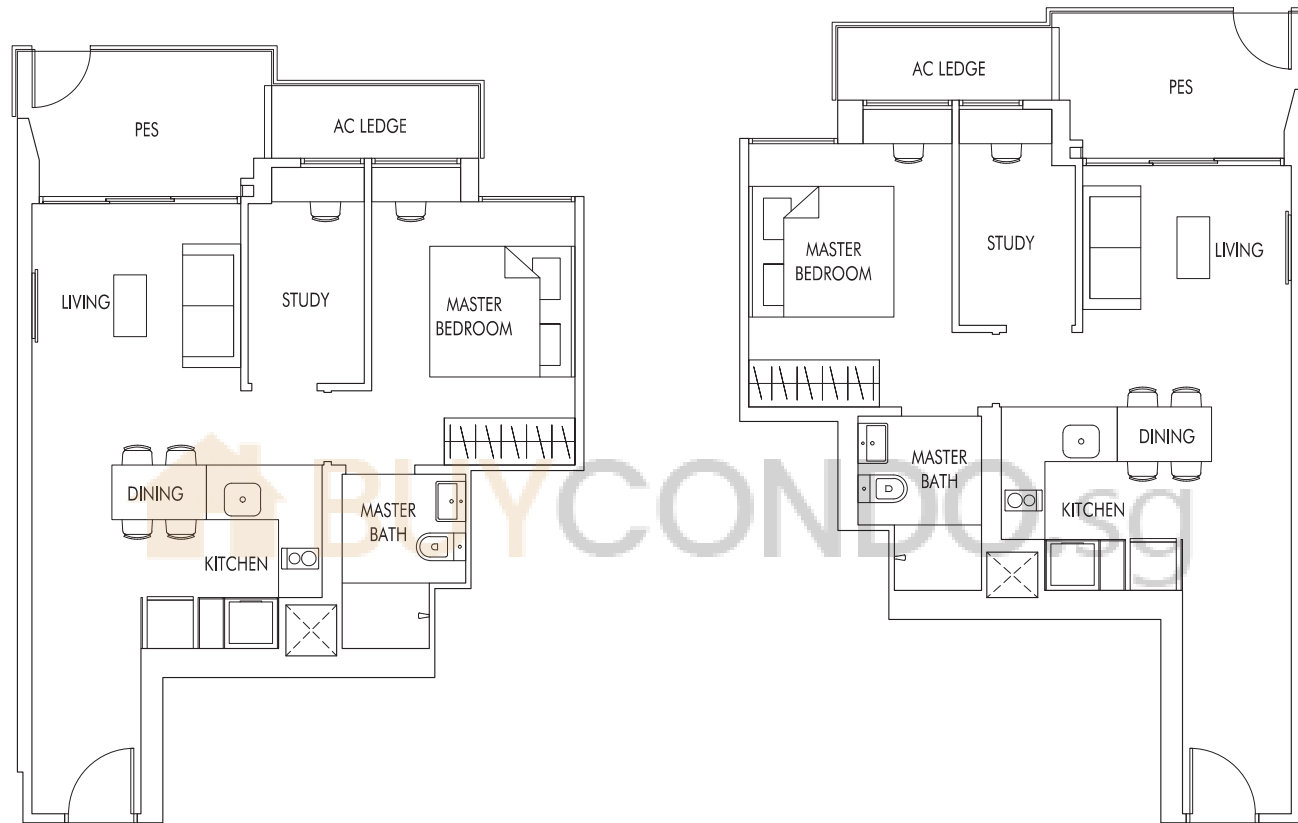
53 sq m | 570 sq ft
(including PES of 6 sq m/65 sq ft)

#01-01
#01-05 (mirror)
#01-06
#01-10 (mirror)



1 + Study

"Our first nest in Singapore's Biggest EC project!
The 1st EC to feature 1-Bedroom and 1+Study!"



TYPE A3P

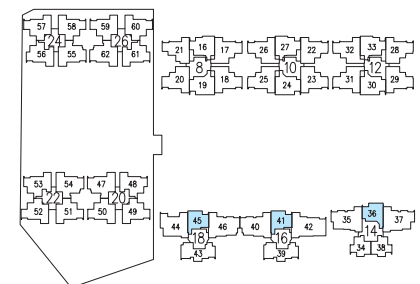
59 sq m | 635 sq ft
(including PES of 7 sq m/75 sq ft)

#01-41
#01-45

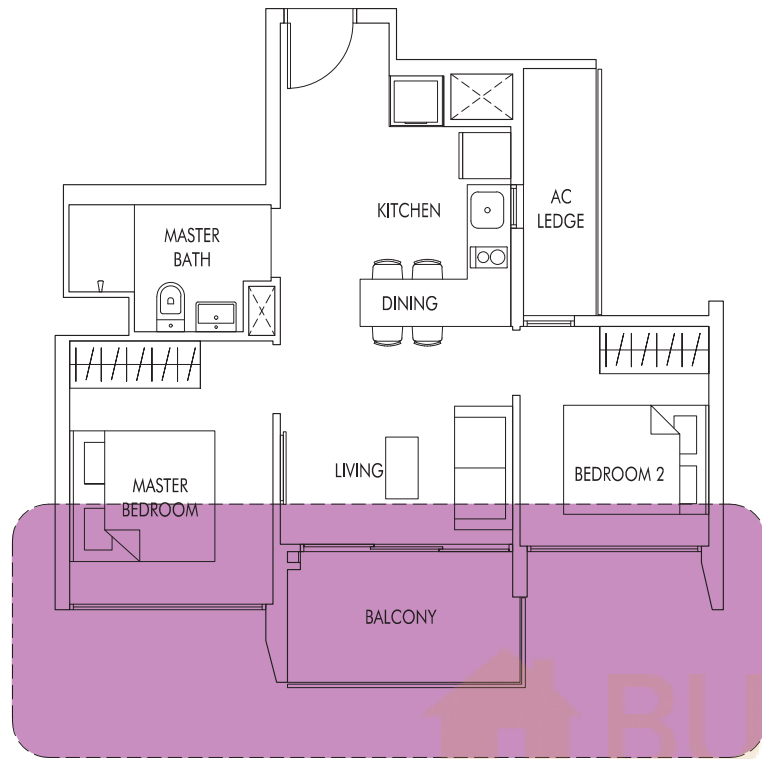
TYPE A4P

60 sq m | 646 sq ft
(including PES of 7 sq m/75 sq ft)

#01-36



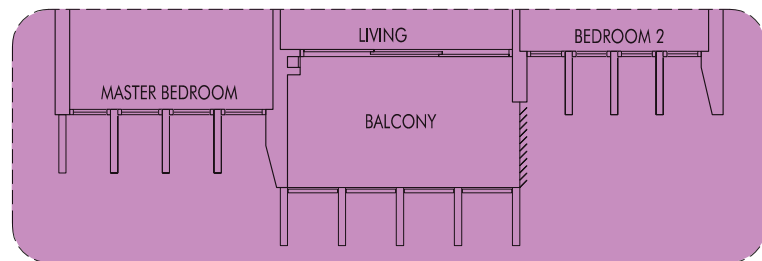
2 Bedroom



TYPE B1

57 sq m | 614 sq ft

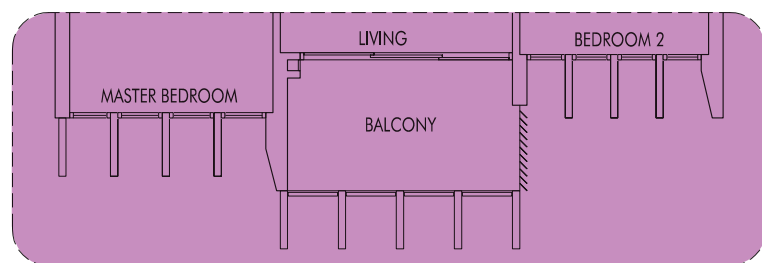
#02-34 to #23-34 (mirror)
#02-38 to #23-38



TYPE B1a

57 sq m | 614 sq ft
WITH VERTICAL LOUVERS & FINS
AS PER DSTA REQUIREMENT

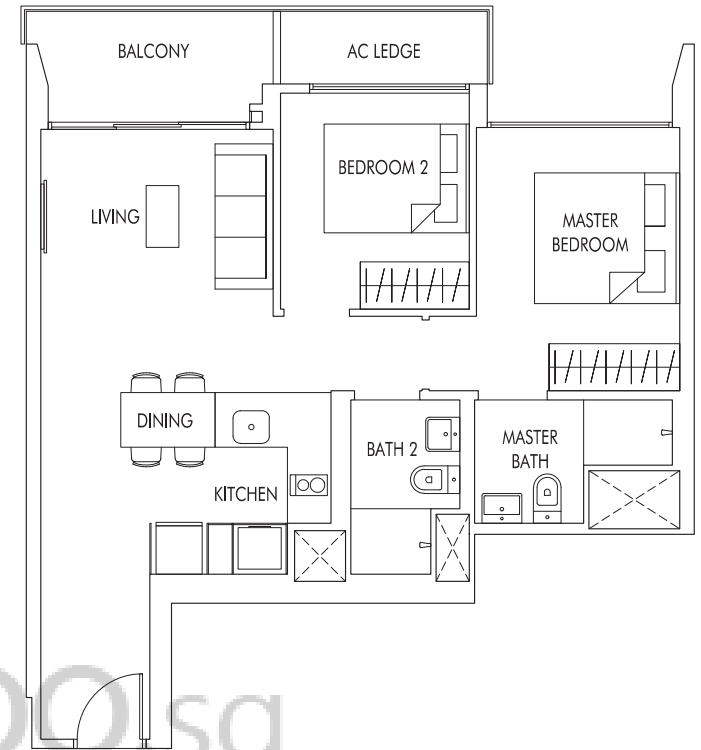
#24-38
#25-38



TYPE B1b

57 sq m | 614 sq ft
WITH VERTICAL LOUVERS & FINS
AS PER DSTA REQUIREMENT

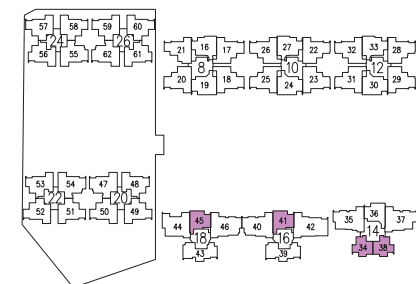
#24-34 (mirror)
#25-34 (mirror)



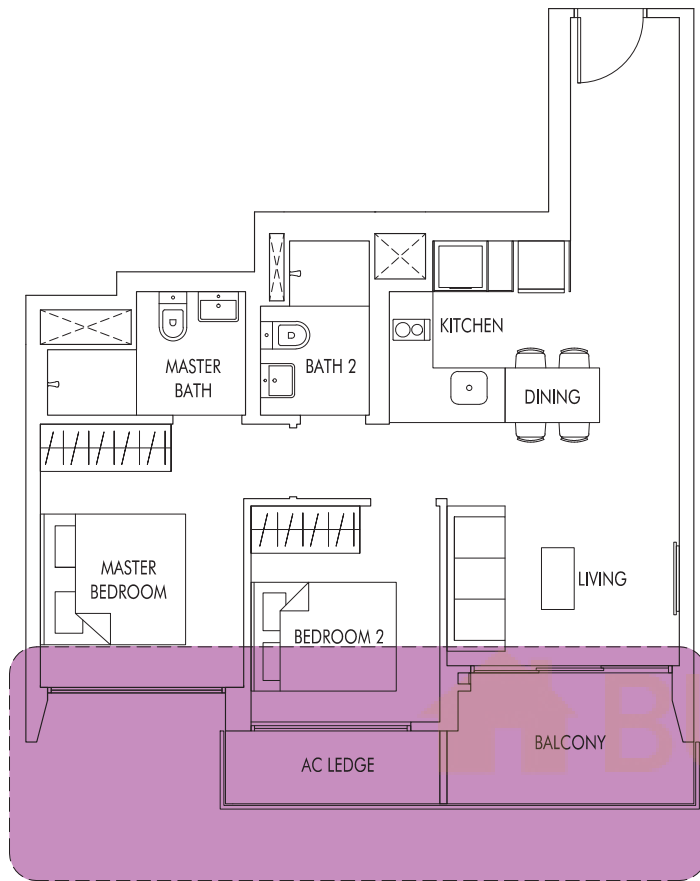
TYPE B2

66 sq m | 710 sq ft

#02-41 to #21-41
#02-45 to #21-45



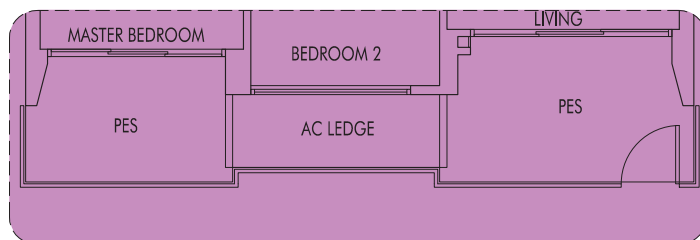
2 Bedroom



TYPE B3

68 sq m | 732 sq ft

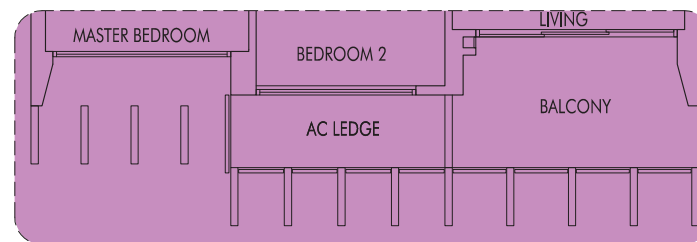
#02-03 to #23-03
 #02-08 to #23-08
 #02-13 to #23-13
 #02-36 to #25-36 (mirror)



TYPE B3P

74 sq m | 797 sq ft
 (including PES of 12 sq m/129 sq ft)

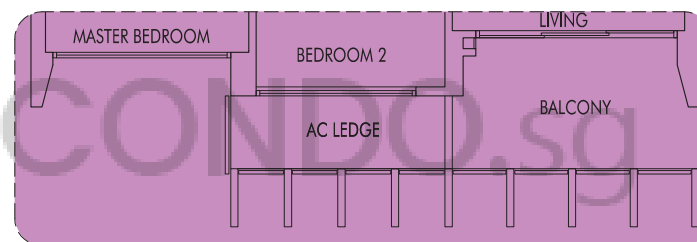
#01-03
 #01-08
 #01-13



TYPE B3a

68 sq m | 732 sq ft
 WITH VERTICAL LOUVERS & FINS
 AS PER DSTA REQUIREMENT

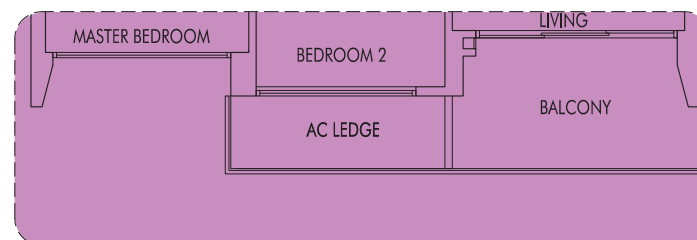
#24-03



TYPE B3b

68 sq m | 732 sq ft
 WITH VERTICAL LOUVERS & FINS
 AS PER DSTA REQUIREMENT

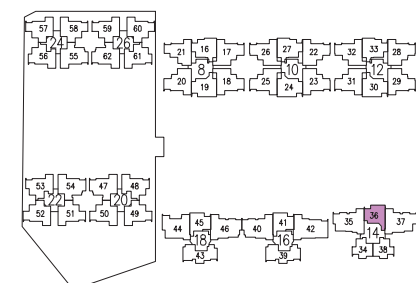
#24-08
 #25-08



TYPE B3c

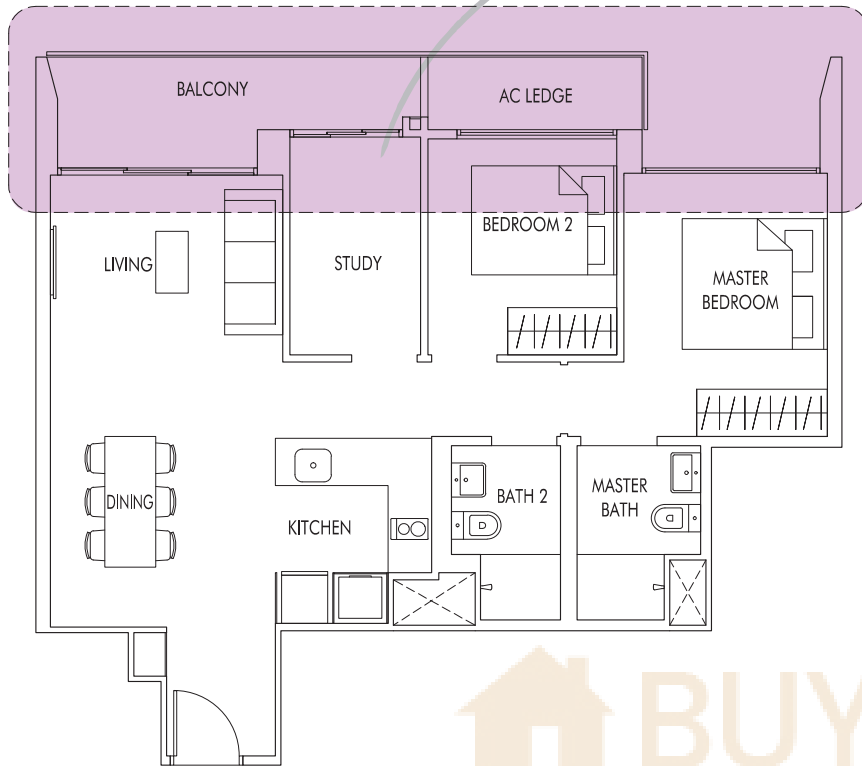
68 sq m | 732 sq ft
 WITH VERTICAL LOUVERS
 AS PER DSTA REQUIREMENT

#24-13
 #25-13



2 + Study

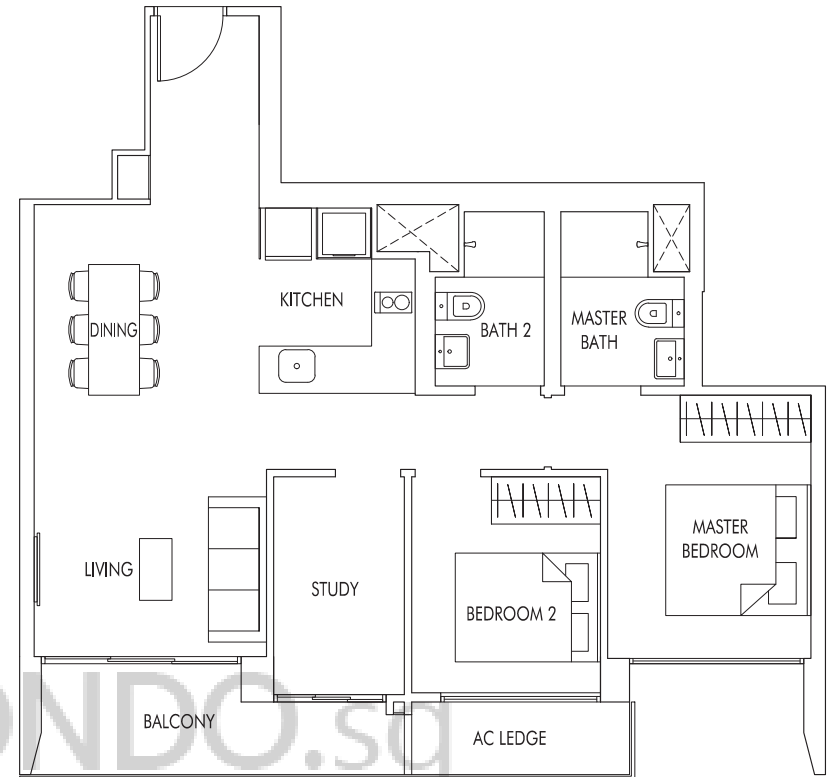
"I can turn the extra room into an office, allowing me to keep an eye on my toddler at home."



TYPE B4

79 sq m | 850 sq ft

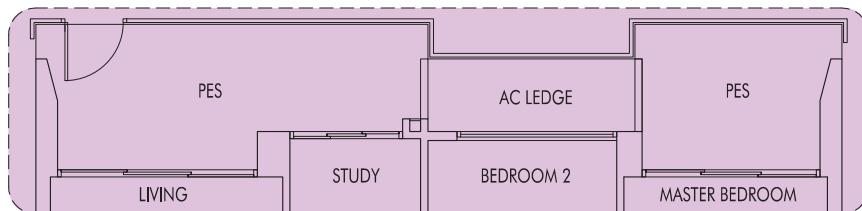
#02-16 to #22-16 (mirror)
#02-27 to #24-27
#02-33 to #24-33



TYPE B5

81 sq m | 872 sq ft

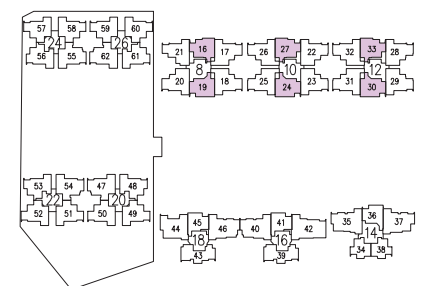
#02-19 to #22-19 (mirror)
#02-24 to #23-24
#02-30 to #23-30



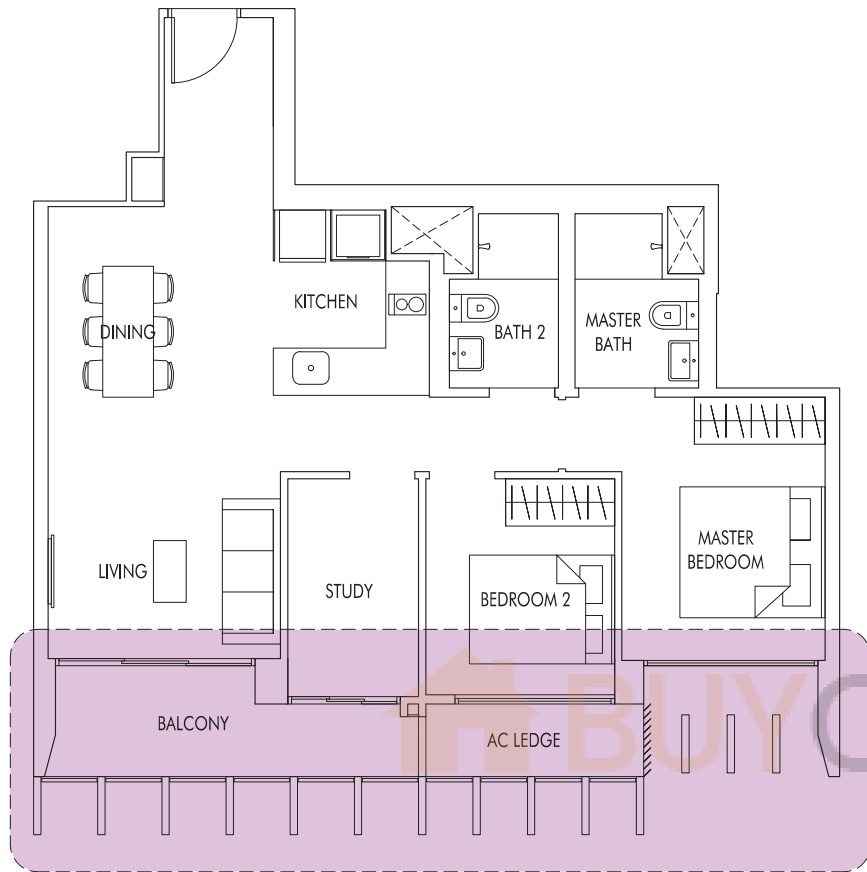
TYPE B4P

87 sq m | 936 sq ft
(including PES of 15 sq m/161 sq ft)

#01-16 (mirror)
#01-27
#01-33

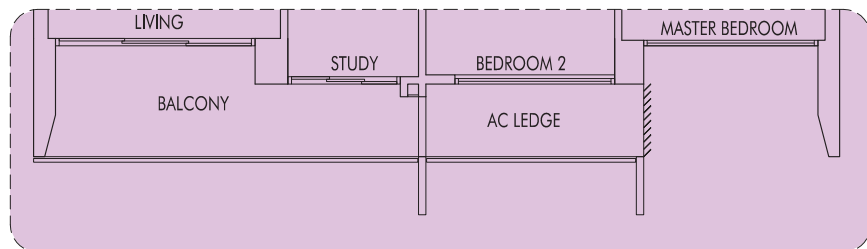


2 Bedroom / 2 + Study



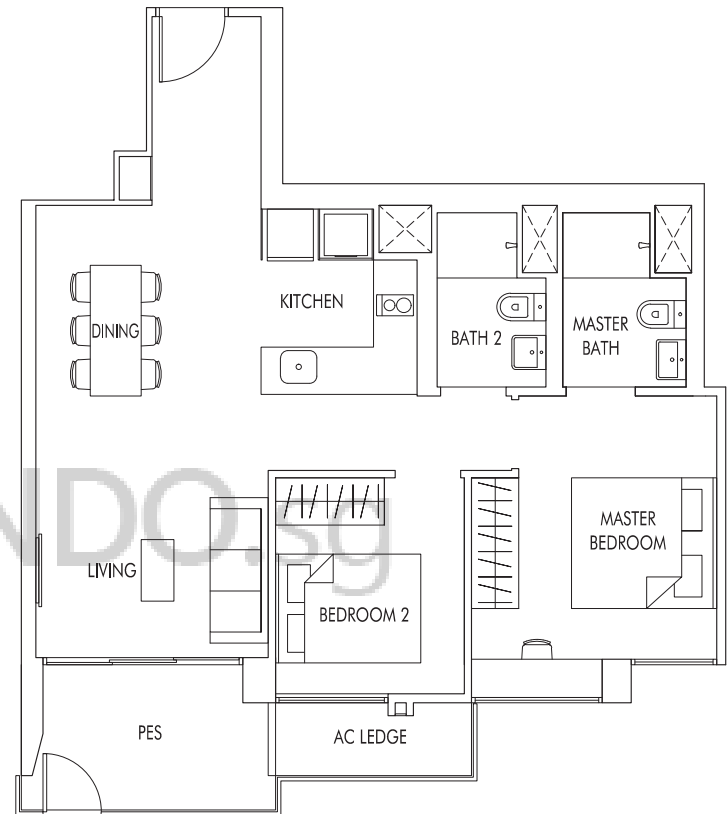
TYPE B5a
81 sq m | 872 sq ft
WITH VERTICAL LOUVERS & FINS
AS PER DSTA REQUIREMENT

#24-30



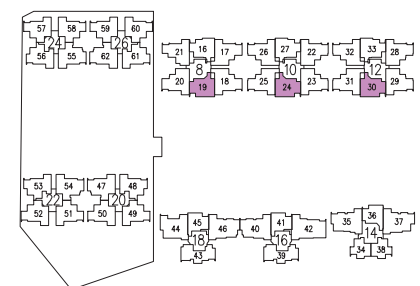
TYPE B5b
81 sq m | 872 sq ft
WITH VERTICAL LOUVERS & FINS
AS PER DSTA REQUIREMENT

#24-24

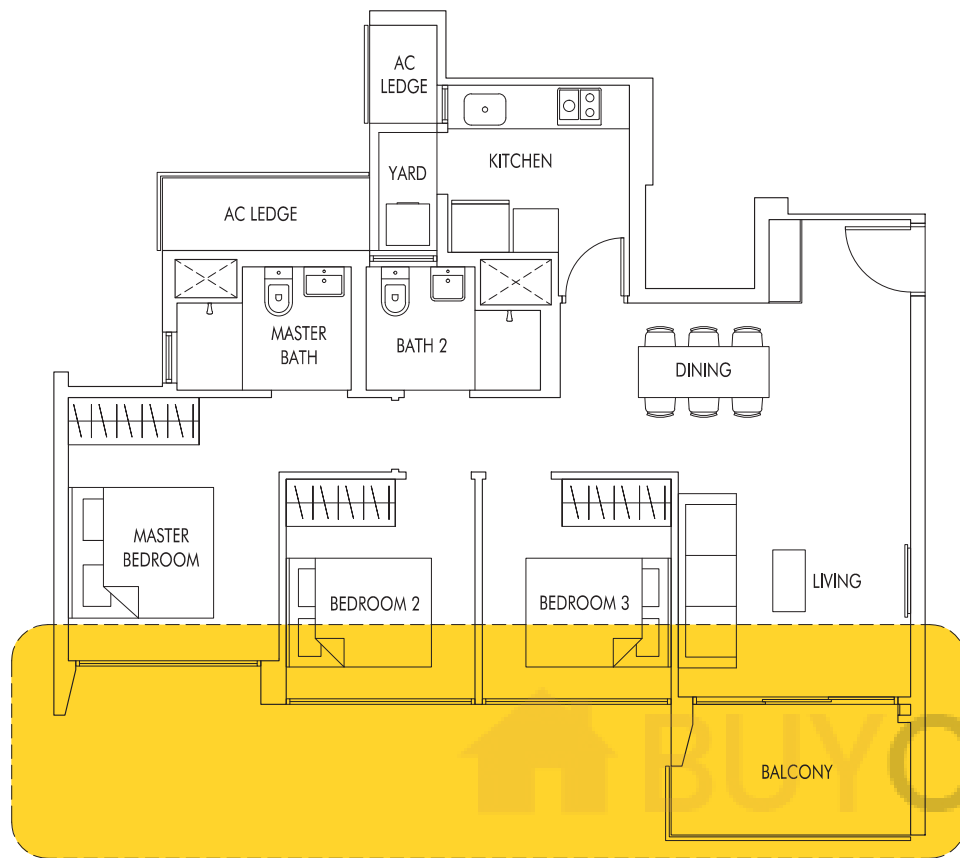


TYPE B5P
75 sq m | 807 sq ft
(including PES of 7 sq m/75 sq ft)

#01-19 (mirror)
#01-24
#01-30



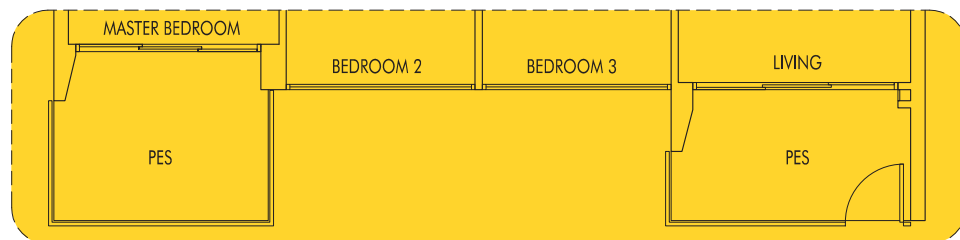
3 Bedroom



TYPE C1

86 sq m | 926 sq ft

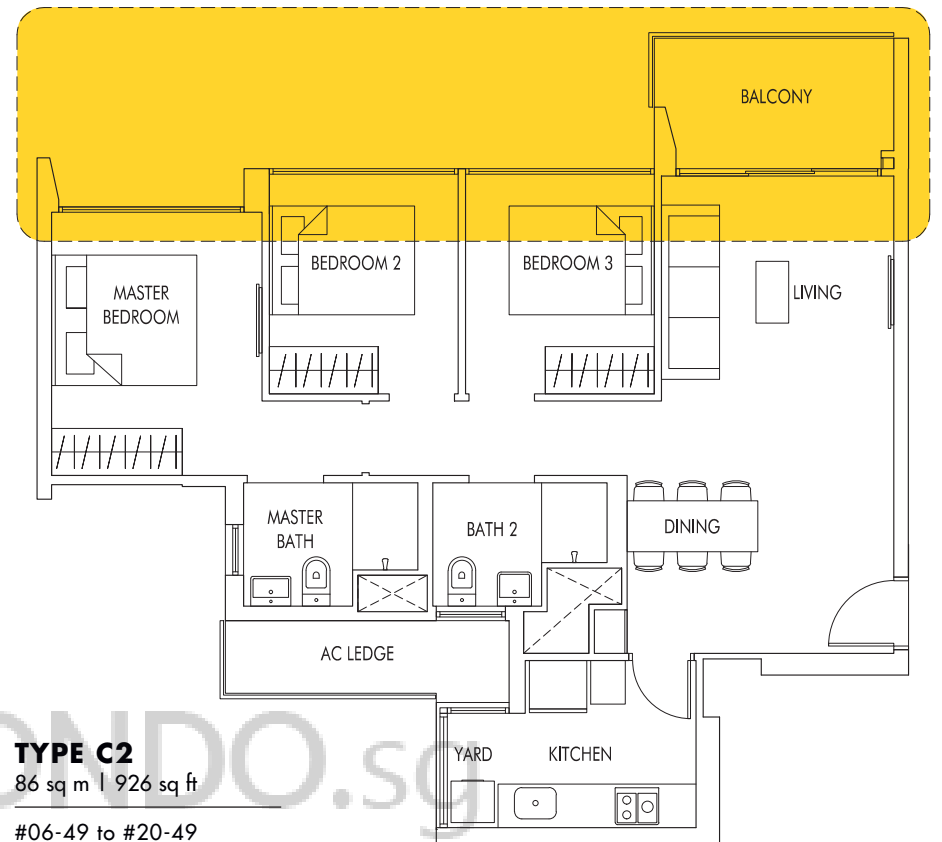
#06-48 to #20-48
 #06-53 to #20-53 (mirror)
 #06-56 to #19-56
 #06-61 to #19-61 (mirror)



TYPE C1P

93 sq m | 1001 sq ft
 (including PES of 13 sq m/140 sq ft)

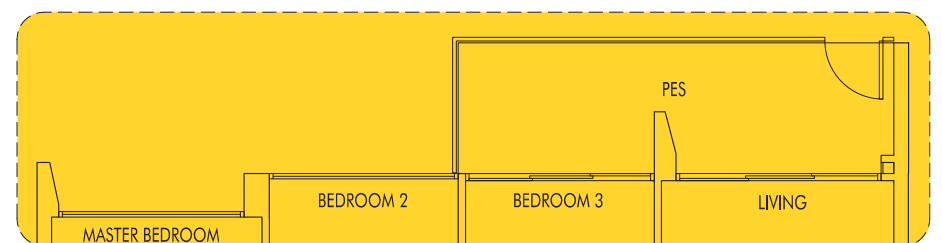
#05-48
 #05-53 (mirror)
 #05-56
 #05-61 (mirror)



TYPE C2

86 sq m | 926 sq ft

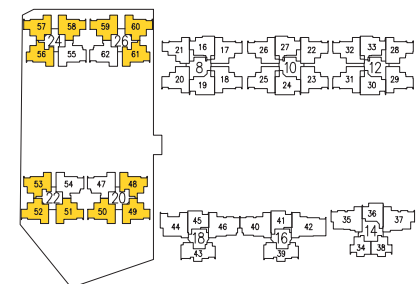
#06-49 to #20-49
 #06-50 to #20-50 (mirror)
 #06-51 to #20-51
 #06-52 to #20-52 (mirror)
 #06-57 to #19-57
 #06-58 to #19-58 (mirror)
 #06-59 to #19-59
 #06-60 to #19-60 (mirror)



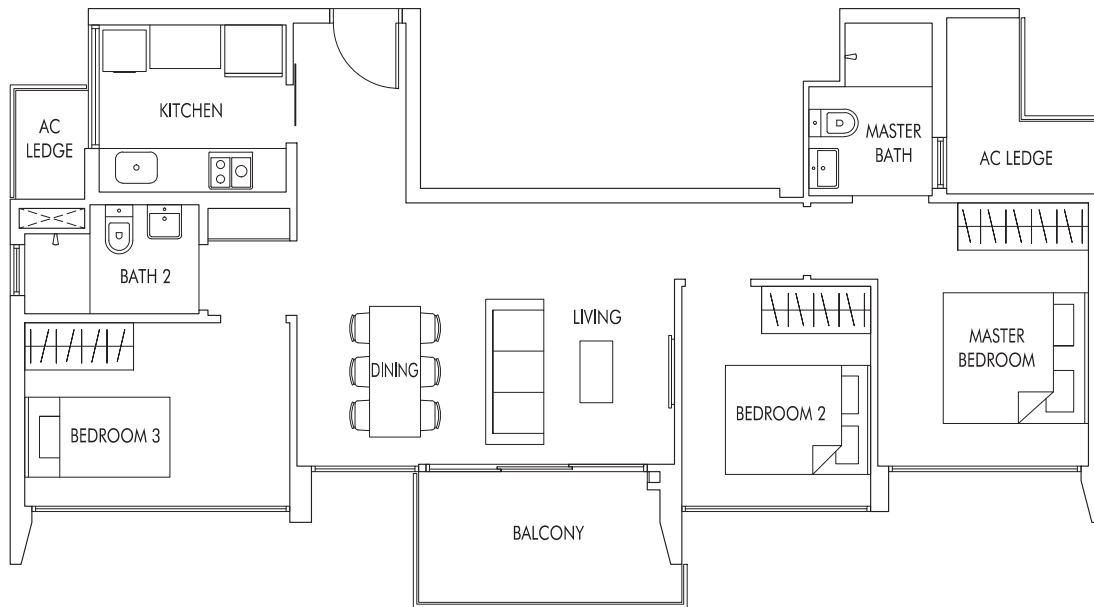
TYPE C2P

91 sq m | 980 sq ft
 (including PES of 11 sq m/118 sq ft)

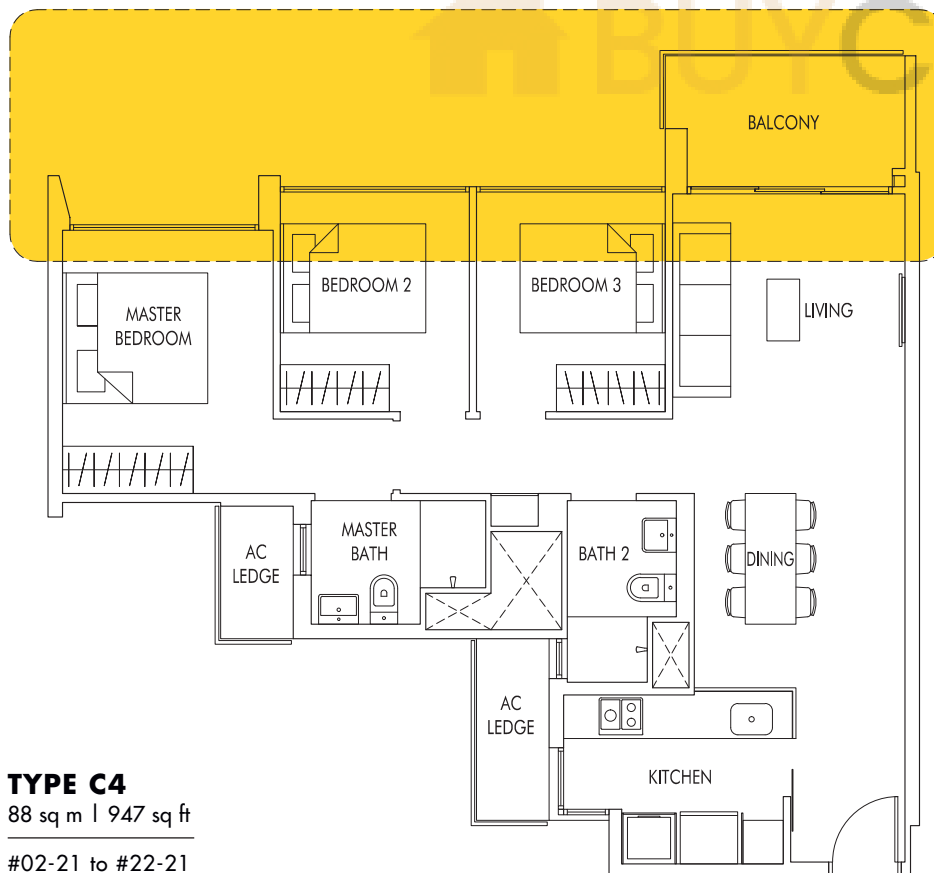
#05-49
 #05-50 (mirror)
 #05-51
 #05-52 (mirror)
 #05-57
 #05-58 (mirror)
 #05-59
 #05-60 (mirror)



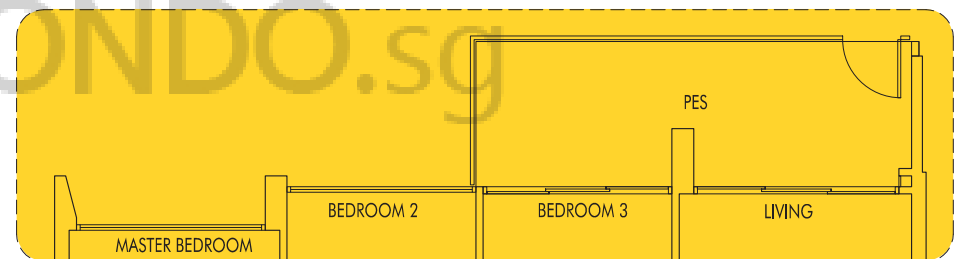
3 Bedroom



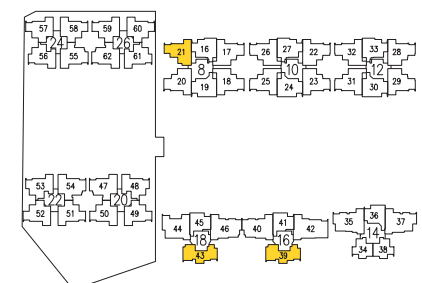
TYPE C3
86 sq m | 926 sq ft
#02-39 to #21-39
#02-43 to #21-43



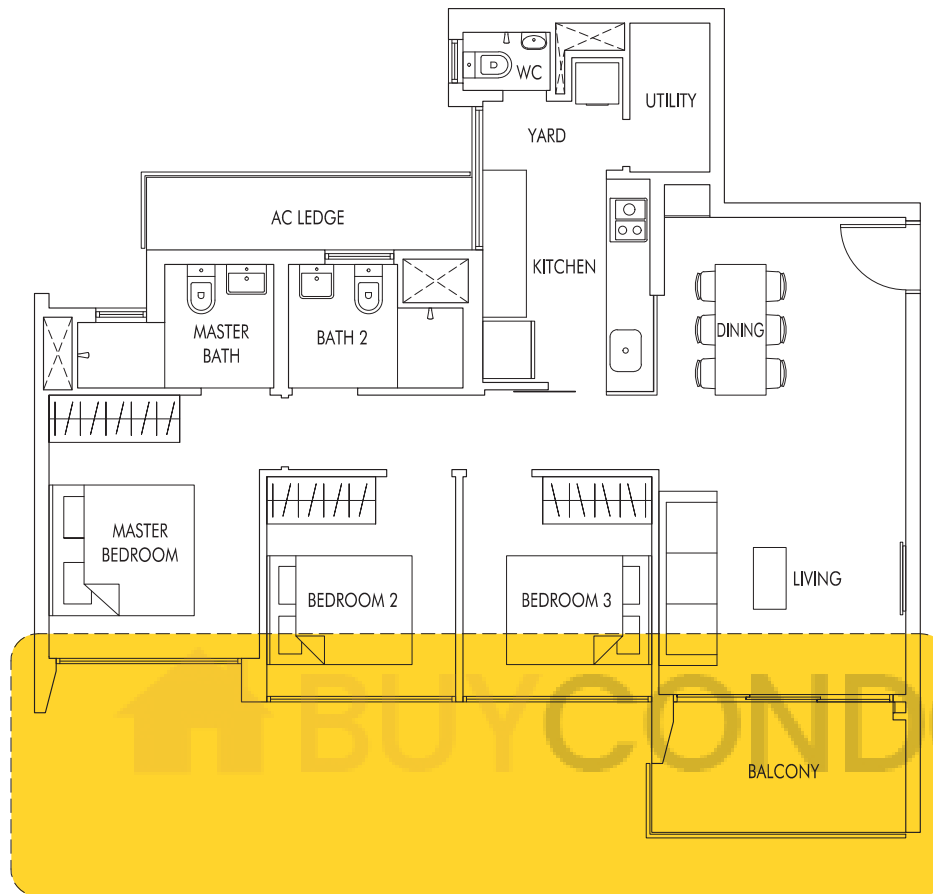
TYPE C4
88 sq m | 947 sq ft
#02-21 to #22-21



TYPE C4P
94 sq m | 1012 sq ft
(including PES of 12 sq m/129 sq ft)
#01-21



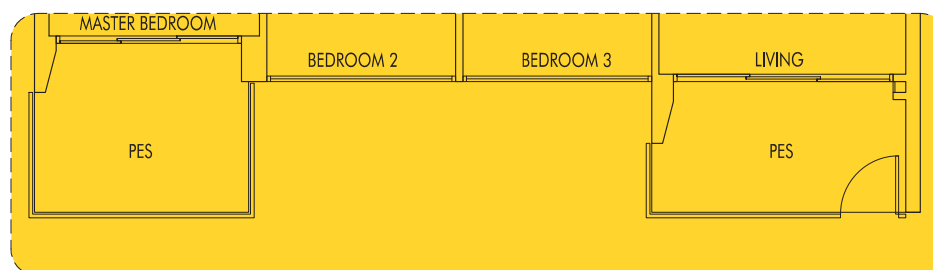
3 Bedroom



TYPE C5

93 sq m | 1001 sq ft

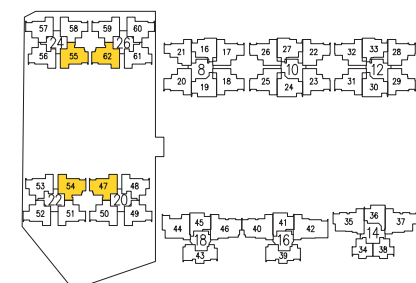
#06-47 to #20-47 (mirror)
 #06-54 to #20-54
 #06-55 to #19-55 (mirror)
 #06-62 to #19-62



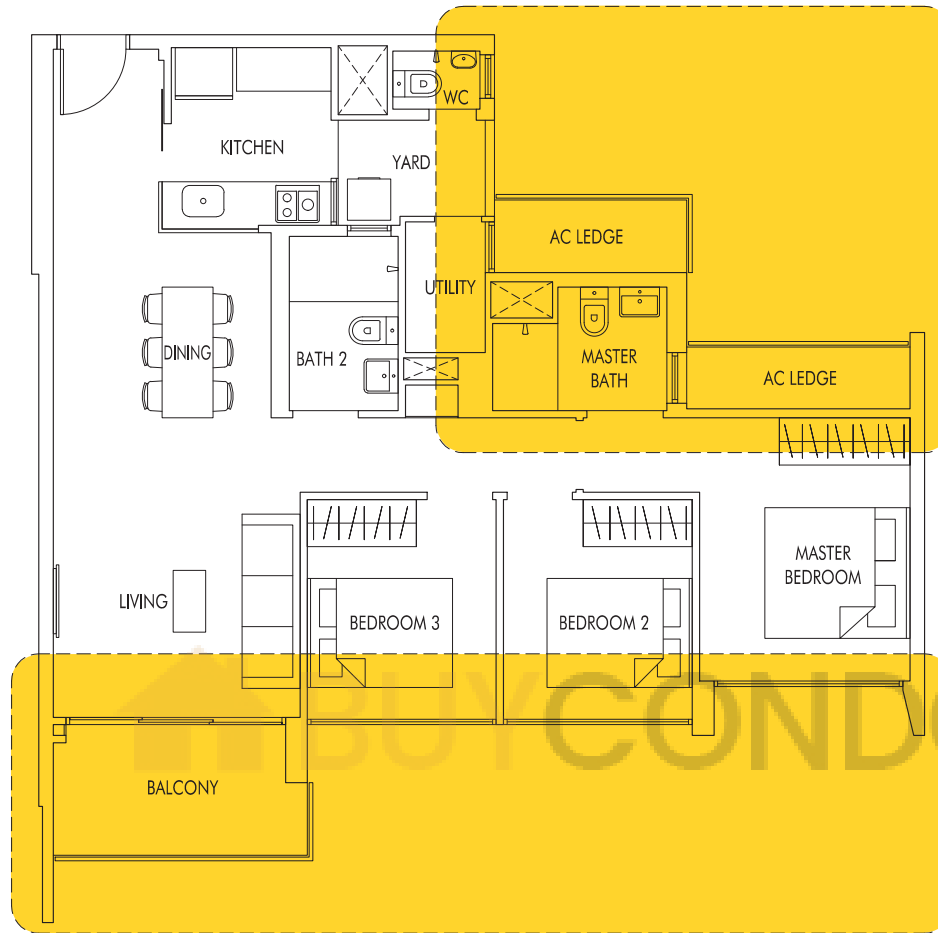
TYPE C5P

100 sq m | 1076 sq ft
 (including PES of 13 sq m/140 sq ft)

#05-47 (mirror)
 #05-54
 #05-55 (mirror)
 #05-62



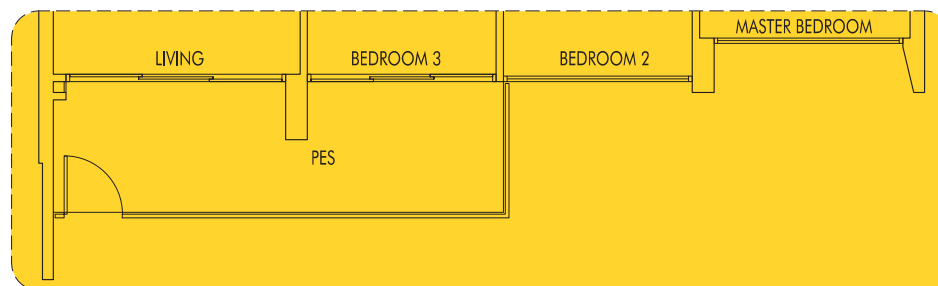
3 Bedroom



TYPE C6

97 sq m | 1044 sq ft

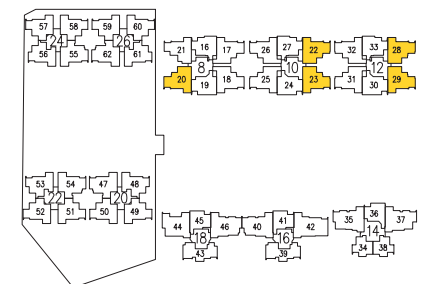
- #02-20 to #22-20 (mirror)
- #02-22 to #24-22 (mirror)
- #02-23 to #23-23
- #02-28 to #23-28 (mirror)
- #02-29 to #23-29



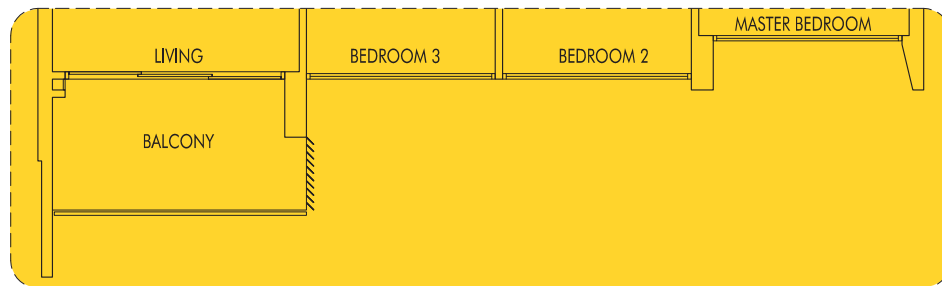
TYPE C6P

102 sq m | 1098 sq ft
(including PES of 11 sq m/118 sq ft)

- #01-20 (mirror)
- #01-22 (mirror)
- #01-23
- #01-28 (mirror)
- #01-29



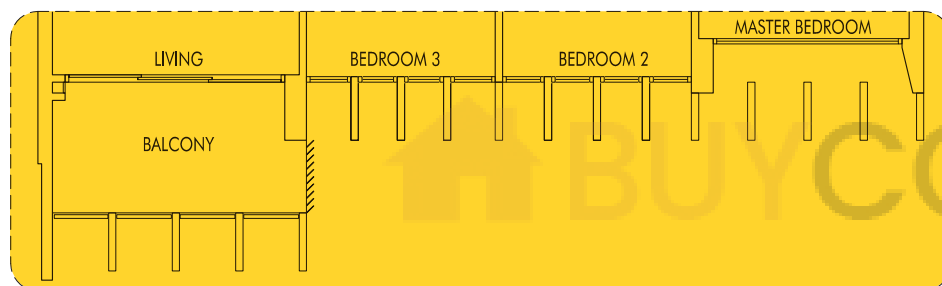
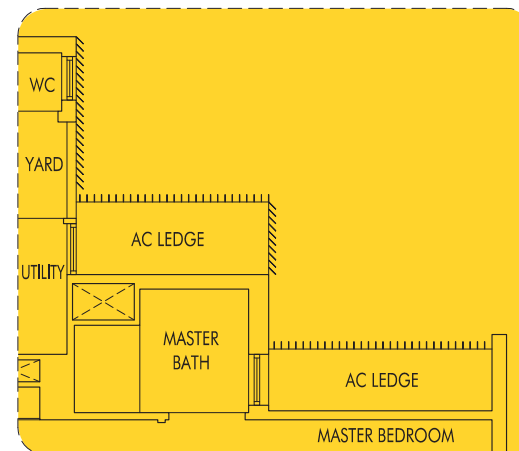
3 Bedroom



TYPE C6a

97 sq m | 1044 sq ft
WITH VERTICAL LOUVERS & FINS
AS PER DSTA REQUIREMENT

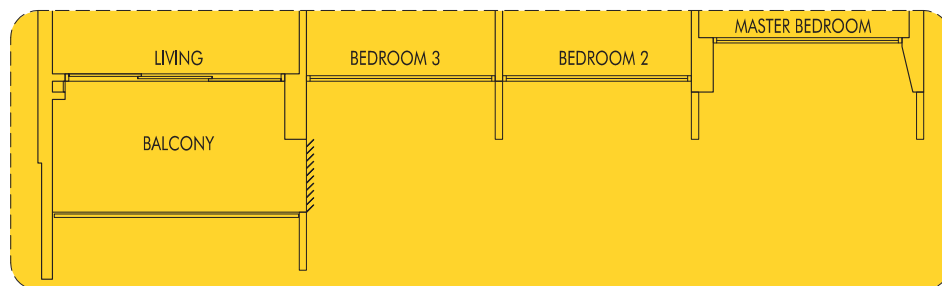
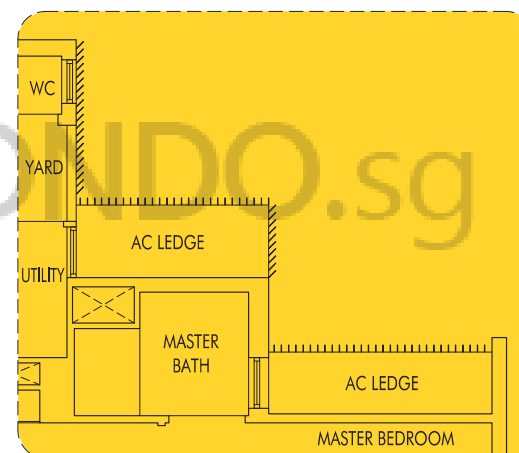
#24-28 (mirror)



TYPE C6b

97 sq m | 1044 sq ft
WITH VERTICAL LOUVERS & FINS
AS PER DSTA REQUIREMENT

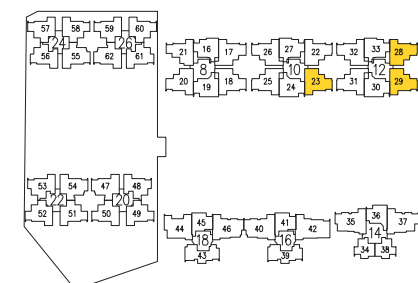
#24-29



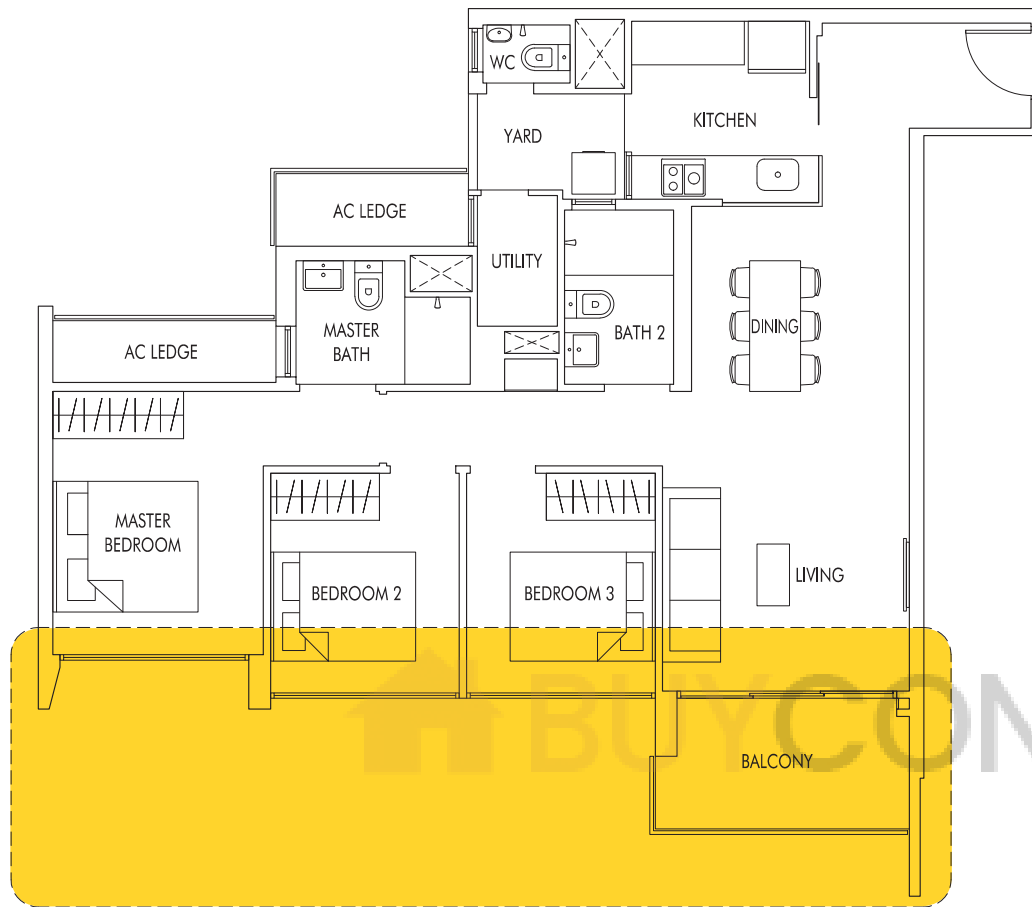
TYPE C6c

97 sq m | 1044 sq ft
WITH VERTICAL LOUVERS & FINS
AS PER DSTA REQUIREMENT

#24-23



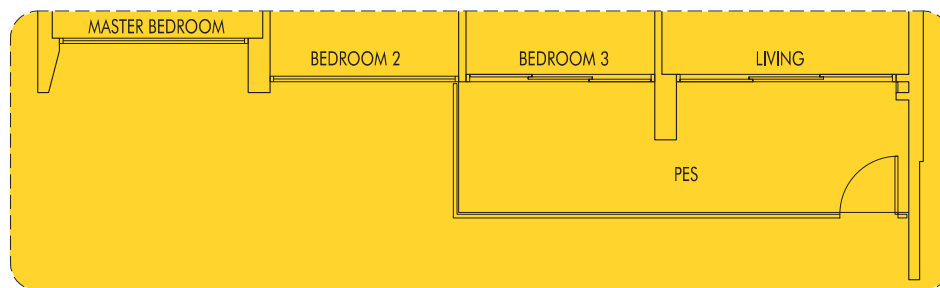
3 Bedroom



TYPE C7

99 sq m | 1066 sq ft

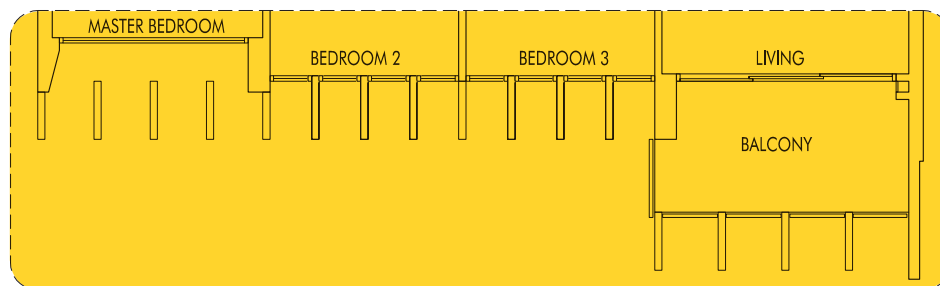
#02-17 to #22-17
 #02-18 to #22-18 (mirror)
 #02-31 to #23-31
 #02-32 to #24-32 (mirror)



TYPE C7P

104 sq m | 1119 sq ft
 (including PES of 11 sq m/118 sq ft)

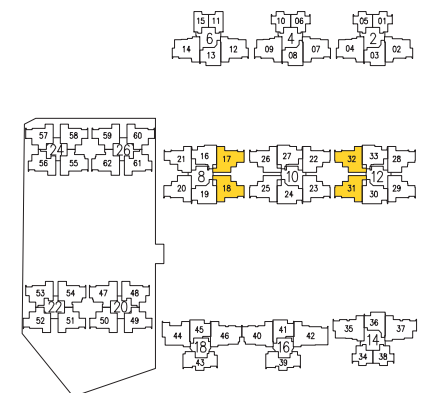
#01-17
 #01-18 (mirror)
 #01-31
 #01-32 (mirror)



TYPE C7a

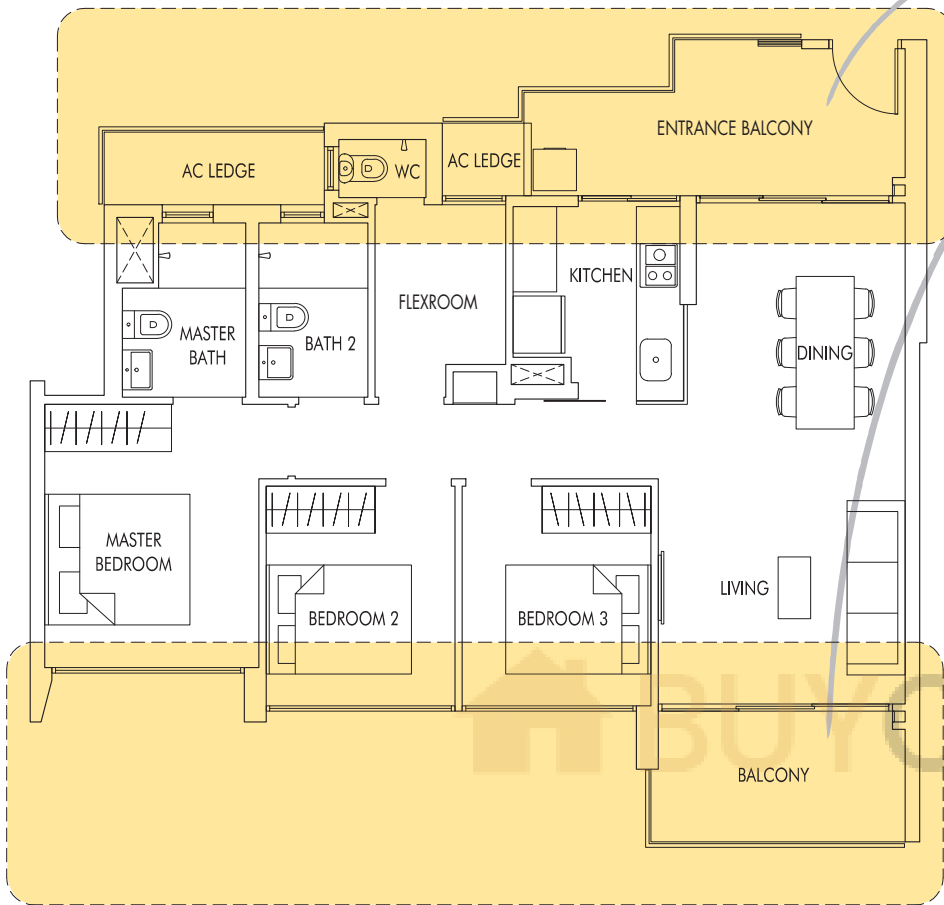
99 sq m | 1066 sq ft
 WITH VERTICAL FINIS
 AS PER DSTA REQUIREMENT

#24-31



3 + FlexRoom

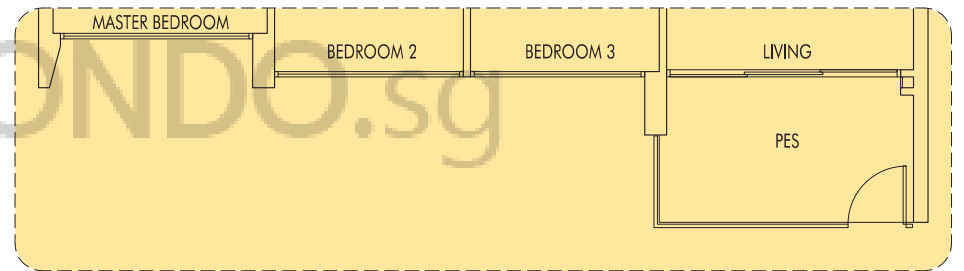
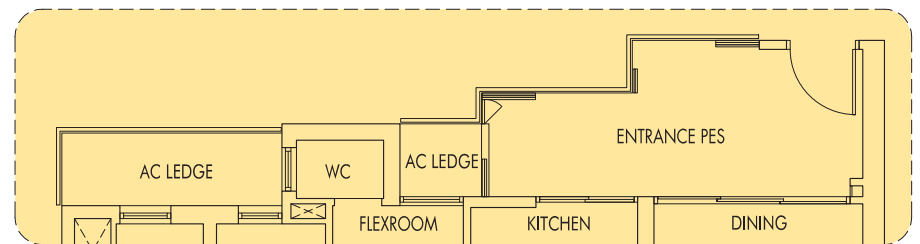
"With this cross-ventilation layout, our family enjoys a breezier and airier home, and of course, savings on electricity bills."



TYPE C8

102 sq m | 1098 sq ft

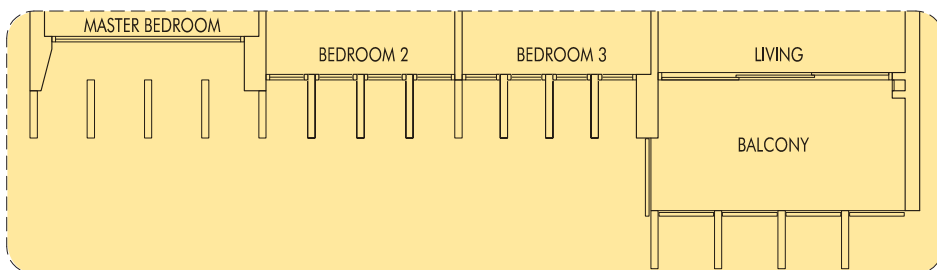
#02-04 to #23-04
#02-09 to #25-09
#02-14 to #25-14



TYPE C8P

102 sq m | 1098 sq ft
(including PES of 17 sq m/183 sq ft)

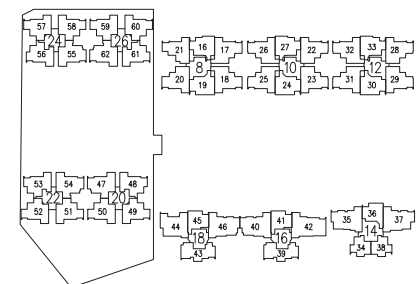
#01-04
#01-09
#01-14



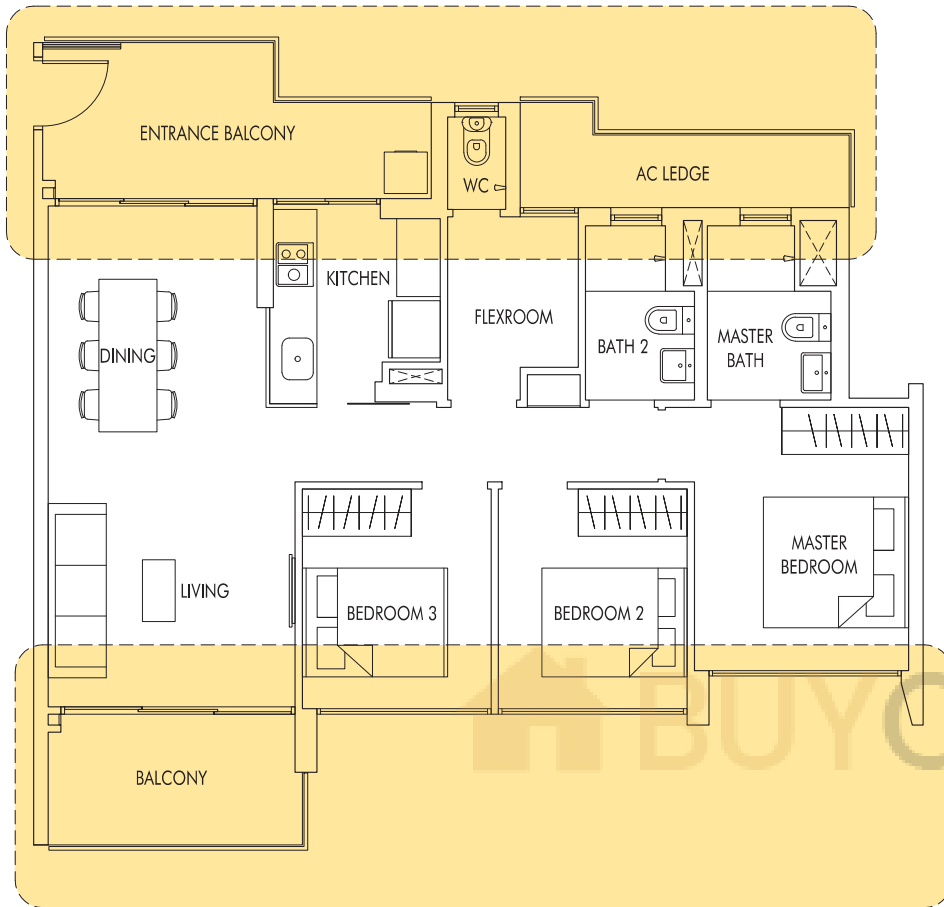
TYPE C8a

102 sq m | 1098 sq ft
WITH VERTICAL FINNS
AS PER DSTA REQUIREMENT

#24-04



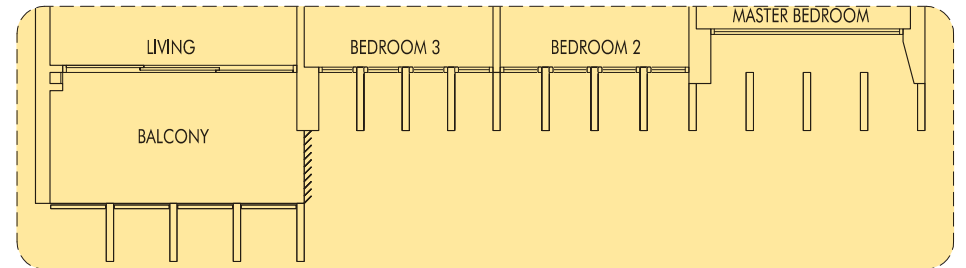
3 + FlexRoom



TYPE C9

102 sq m | 1098 sq ft

#02-02 to #23-02
#02-07 to #23-07
#02-12 to #23-12



TYPE C9b

102 sq m | 1098 sq ft
WITH VERTICAL LOUVERS & FINS
AS PER DSTA REQUIREMENT

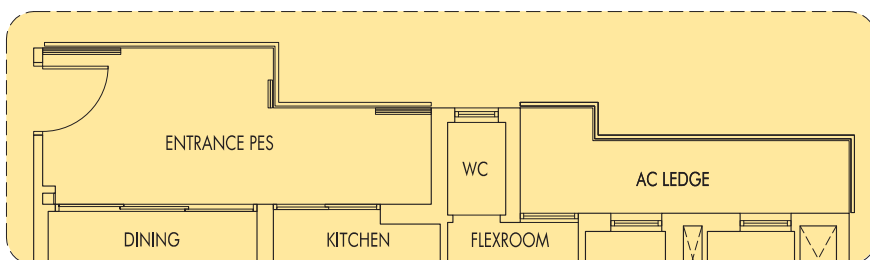
#24-07
#25-07



TYPE C9c

102 sq m | 1098 sq ft
WITH VERTICAL LOUVERS
AS PER DSTA REQUIREMENT

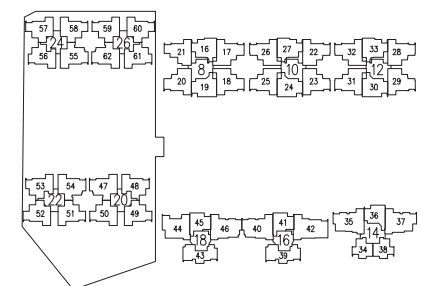
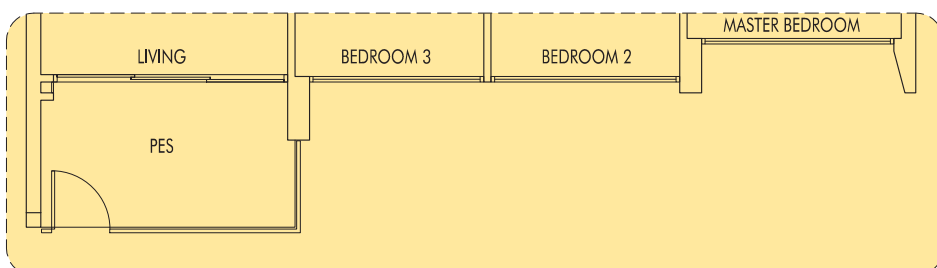
#24-12
#25-12



TYPE C9P

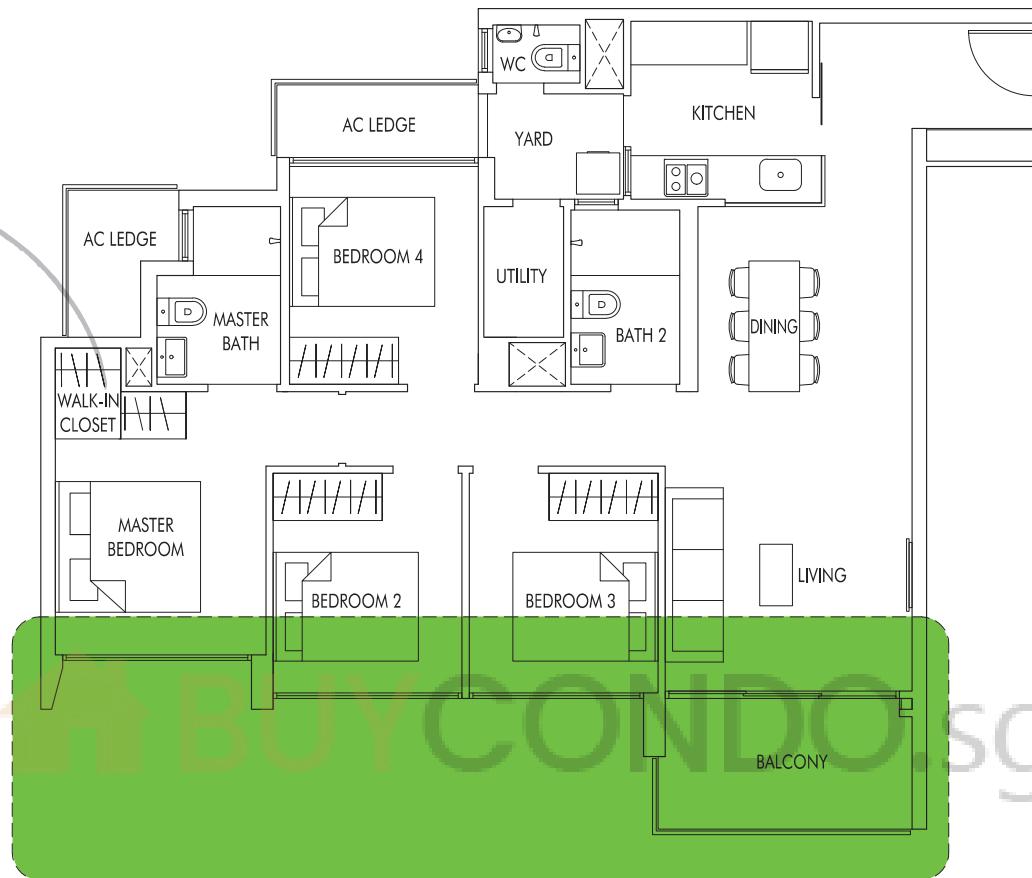
102 sq m | 1098 sq ft
(including PES of 17 sq m/183 sq ft)

#01-02
#01-07
#01-12



4 Bedroom

"Finally, I can have the luxury of having a walk-in wardrobe in my master bedroom."

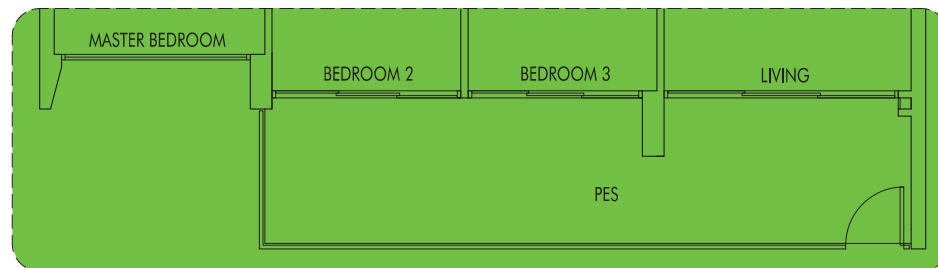


TYPE D1

108 sq m | 1163 sq ft

#02-25 to #24-25

#02-26 to #24-26 (mirror)



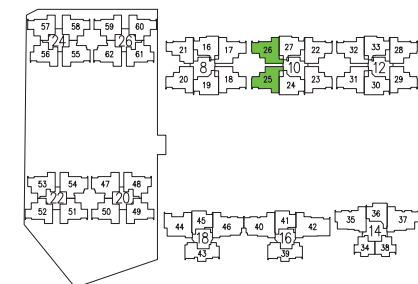
TYPE D1P

120 sq m | 1292 sq ft

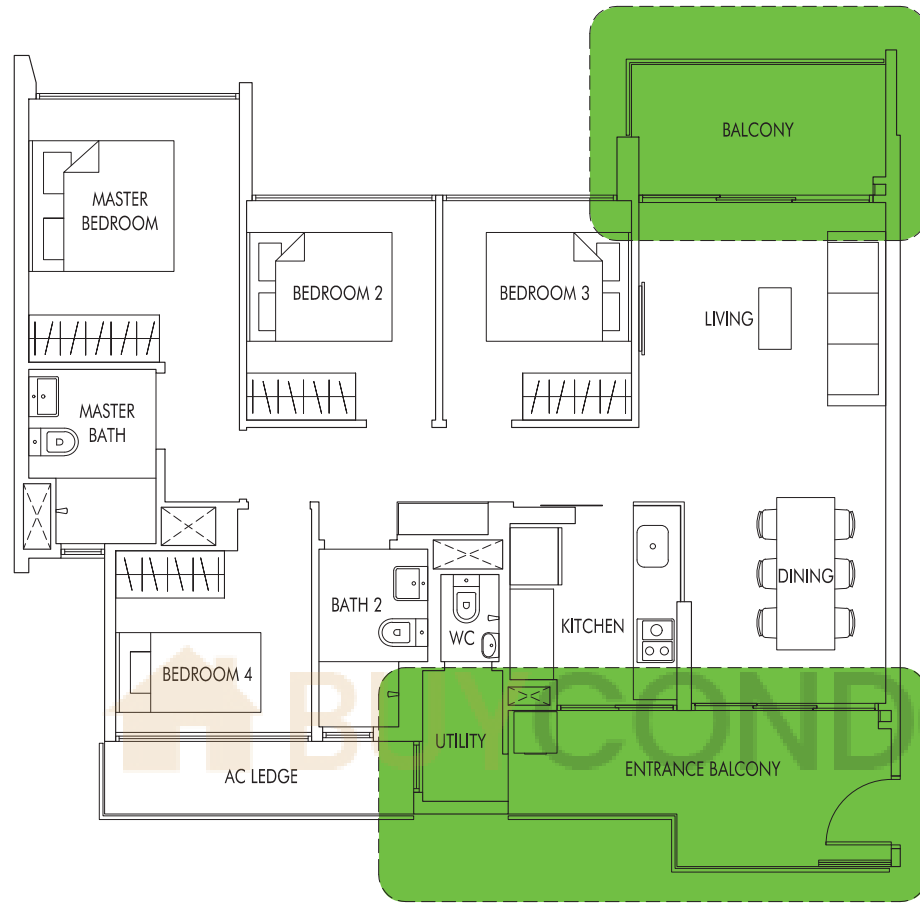
(including PES of 18 sq m/194 sq ft)

#01-25

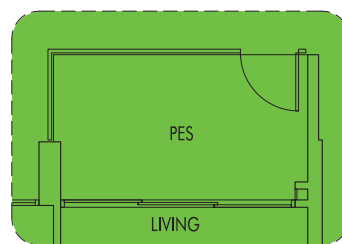
#01-26 (mirror)



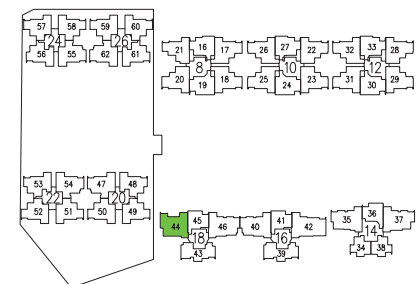
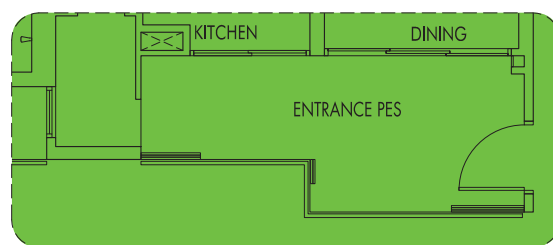
4 Bedroom



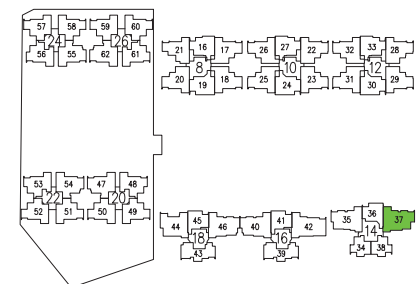
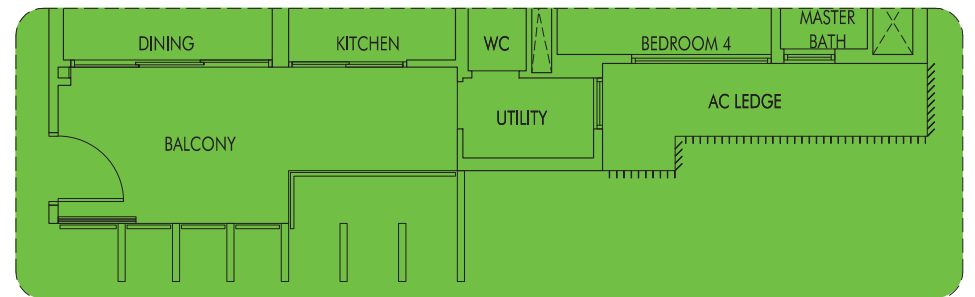
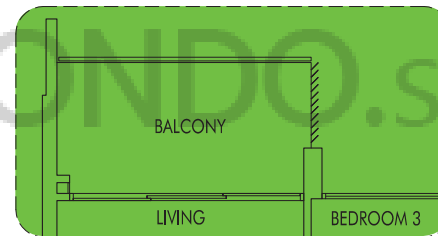
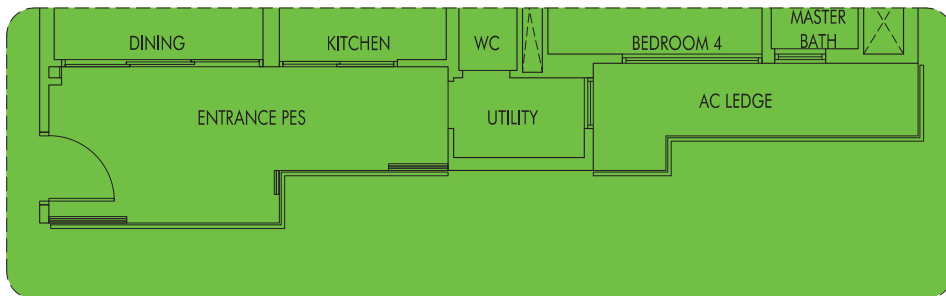
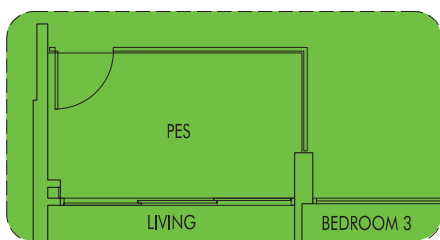
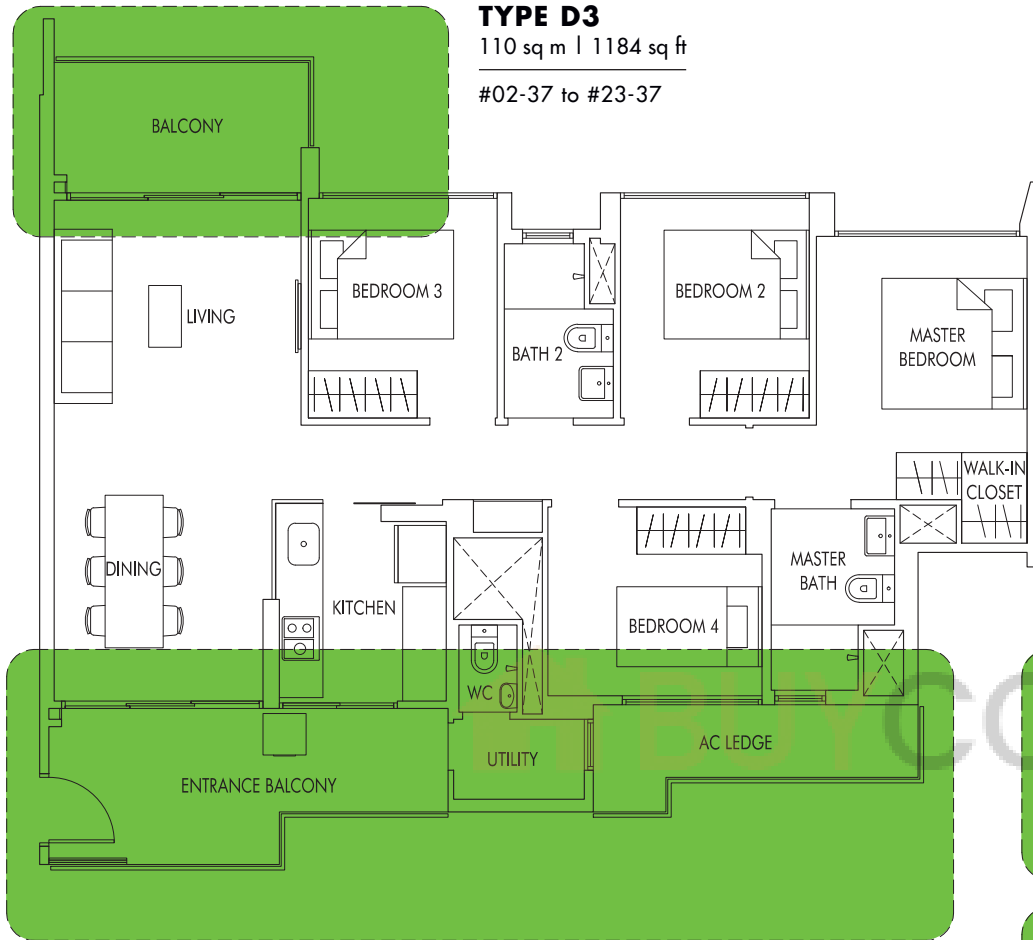
TYPE D2
109 sq m | 1173 sq ft
#02-44 to #21-44



TYPE D2P
110 sq m | 1184 sq ft
(including PES of 18 sq m/194 sq ft)
#01-44

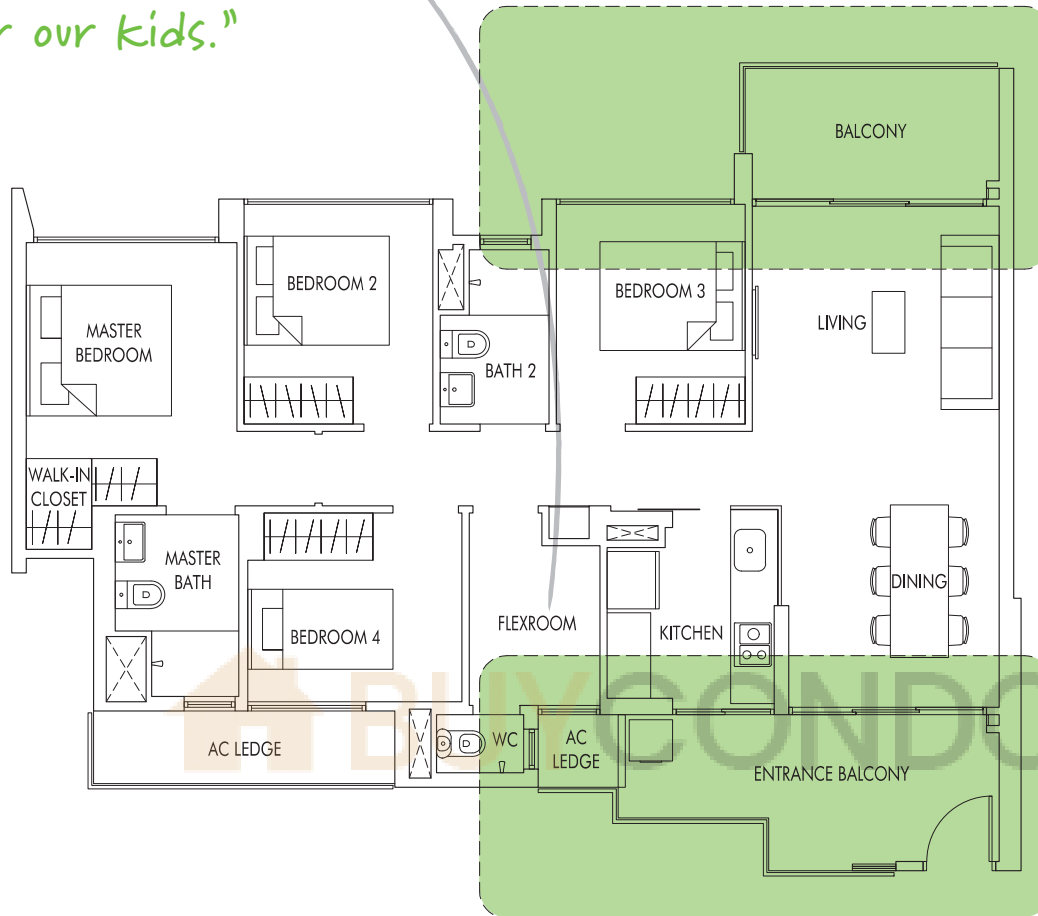


4 Bedroom

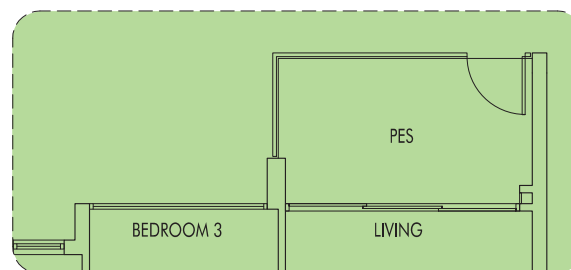


4 + FlexRoom

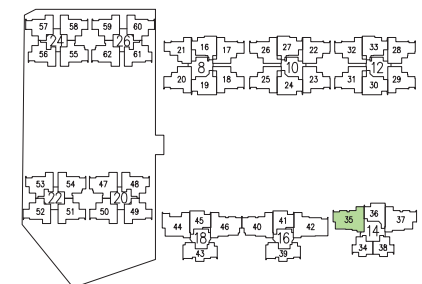
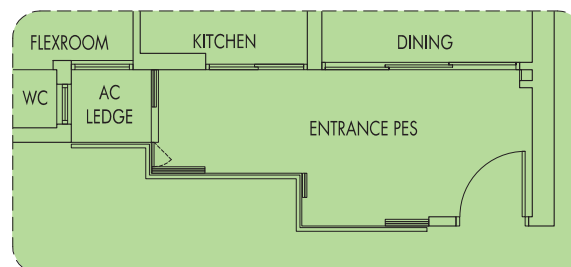
"We can use the FlexRoom as a game room or an extra bedroom for our kids."



TYPE D4
113 sq m | 1216 sq ft
#02-35 to #25-35

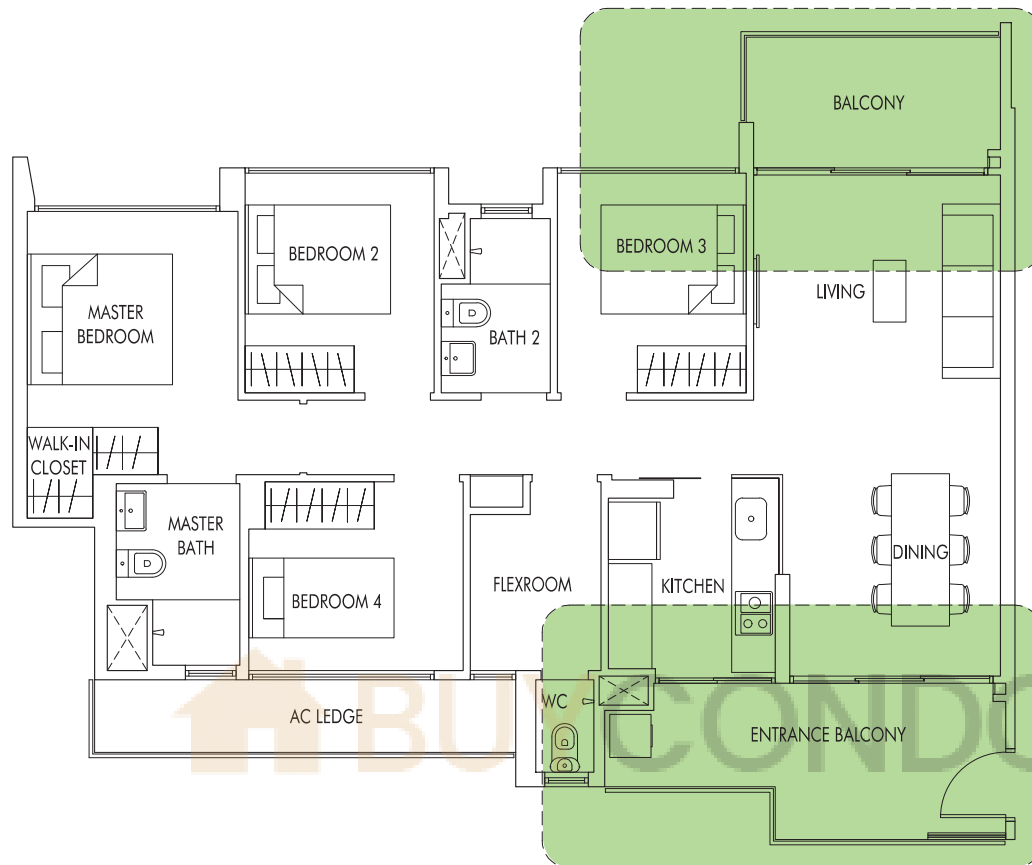


TYPE D4P
114 sq m | 1227 sq ft
(including PES of 18 sq m/194 sq ft)
#01-35





4 + FlexRoom

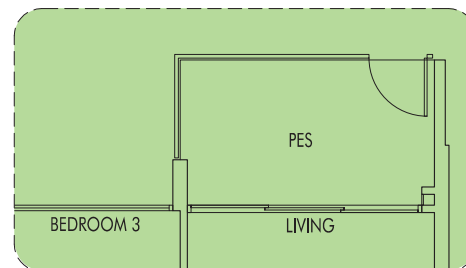


TYPE D5

114 sq m | 1227 sq ft

#02-40 to #21-40

#02-46 to #21-46 (mirror)



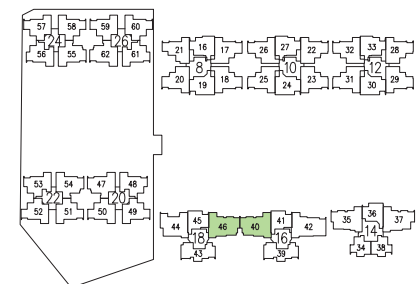
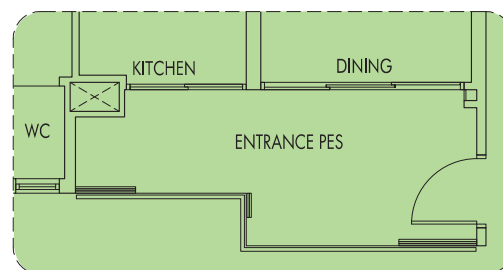
TYPE D5P

115 sq m | 1238 sq ft

(including PES of 18 sq m/194 sq ft)

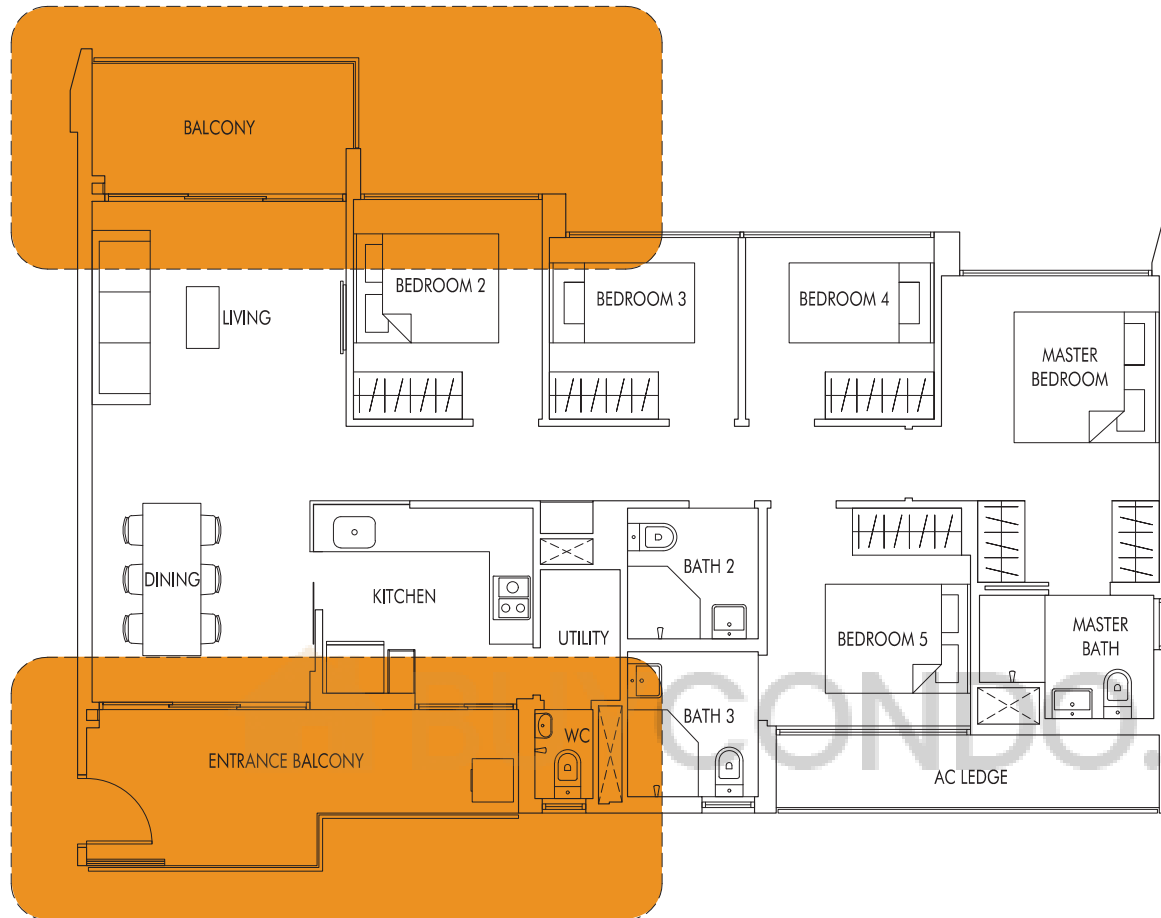
#01-40

#01-46 (mirror)



5 Bedroom

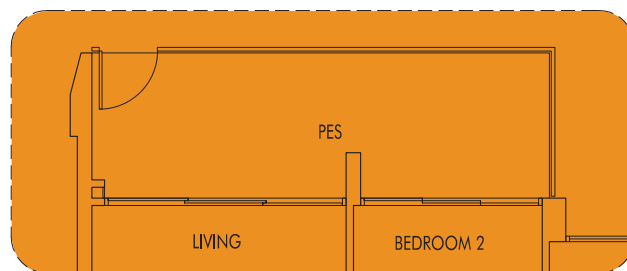
"Living in a 5-Bedroom EC unit is a rarity. Now everyone, including Gramps, can have their own room!"



TYPE E1

128 sq m | 1378 sq ft

#02-42 to #21-42



TYPE E1P

134 sq m | 1442 sq ft

(including PES of 24 sq m/258 sq ft)

#01-42

