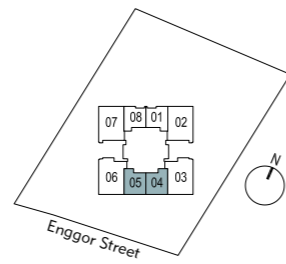
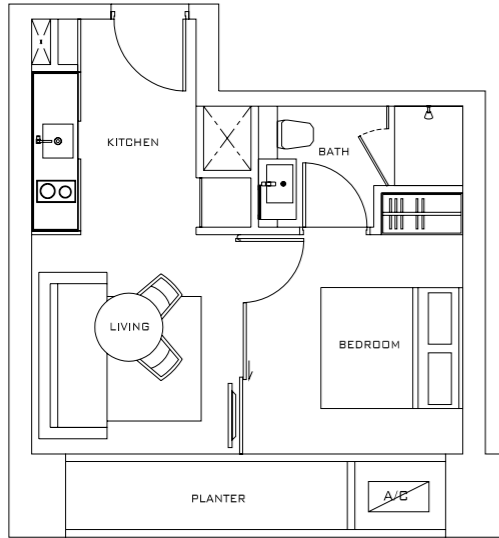


ONE-BEDROOM

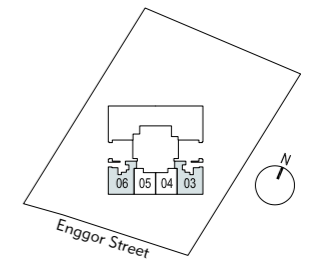
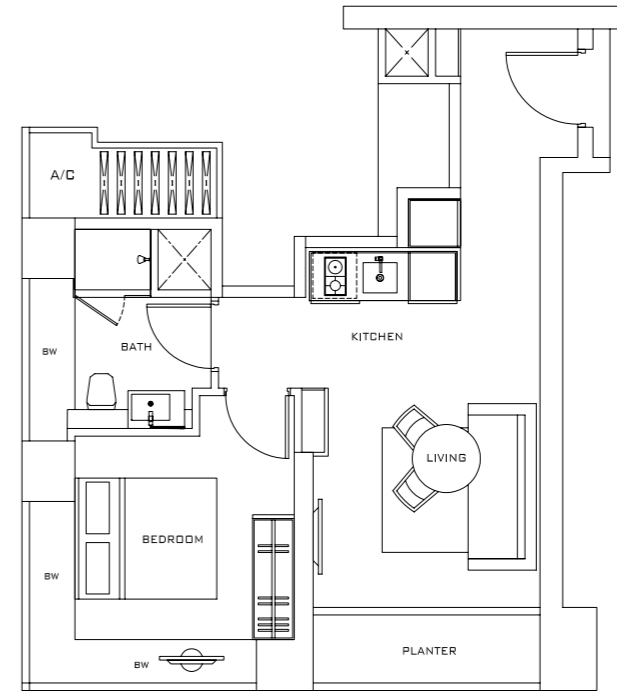
Type A1

37 sq m (398 sq ft)
 #12-04/05 to #30-04/05
 #36-04/05 to #55-04/05
 #60-04/05*



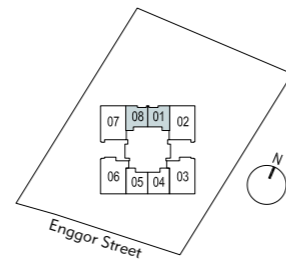
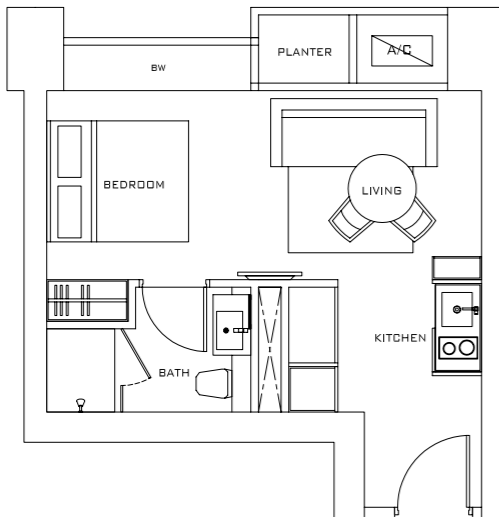
Type A3

47 sq m (505 sq ft)
 #60-03/06



Type A2

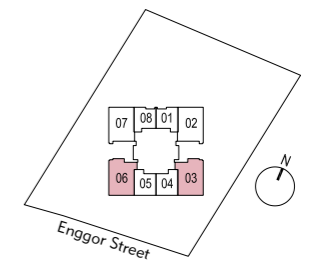
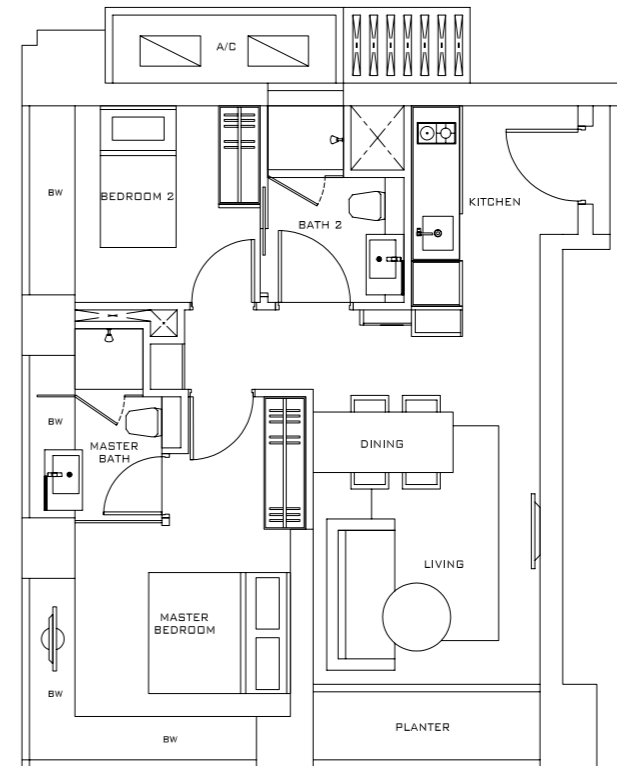
34 sq m (365 sq ft)
 #12-01/08 to #30-01/08
 #36-01/08 to #55-01/08



TWO-BEDROOM

Type B1

65 sq m (699 sq ft)
 #12-03/06 to #30-03/06
 #36-03/06 to #55-03/06

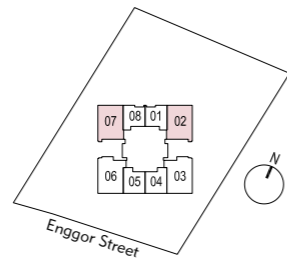
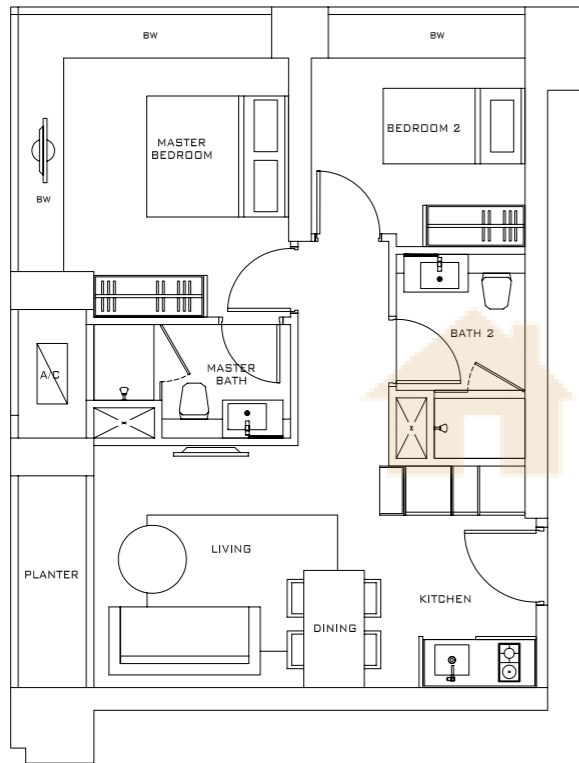


*Refer to keyplan of Type A3 for location of unit.
 All plans are not to scale and subject to changes as may be approved by the relevant authorities. All floor areas are approximate only and are subject to government resurvey.

All plans are not to scale and subject to changes as may be approved by the relevant authorities. All floor areas are approximate only and are subject to government resurvey.

Type B2

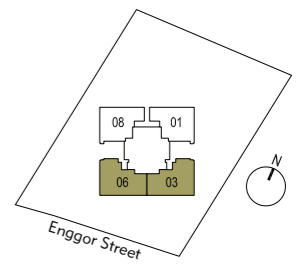
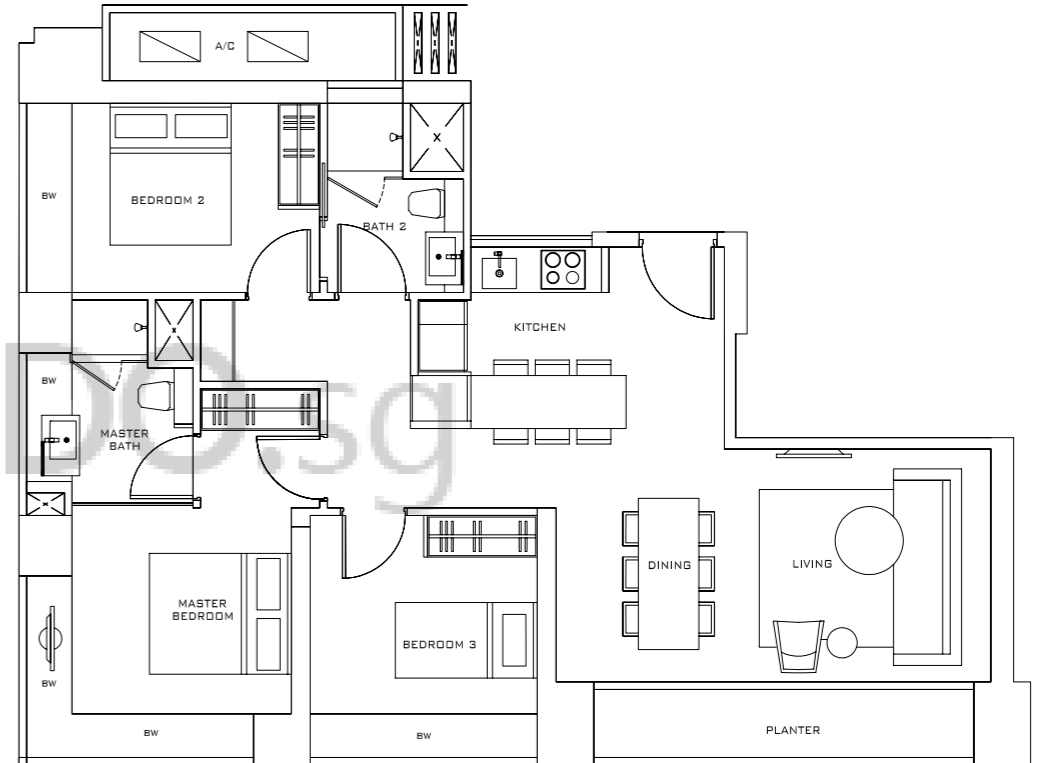
62 sq m (667 sq ft)
#12-02/07 to #30-02/07
#36-02/07 to #55-02/07



THREE-BEDROOM

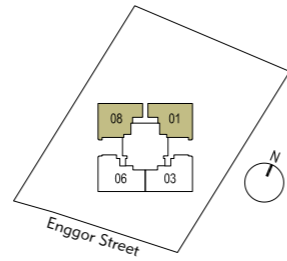
Type C1

94 sq m (1,011 sq ft)
#61-03/06 to #70-03/06



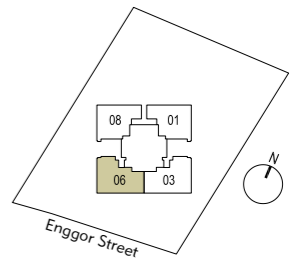
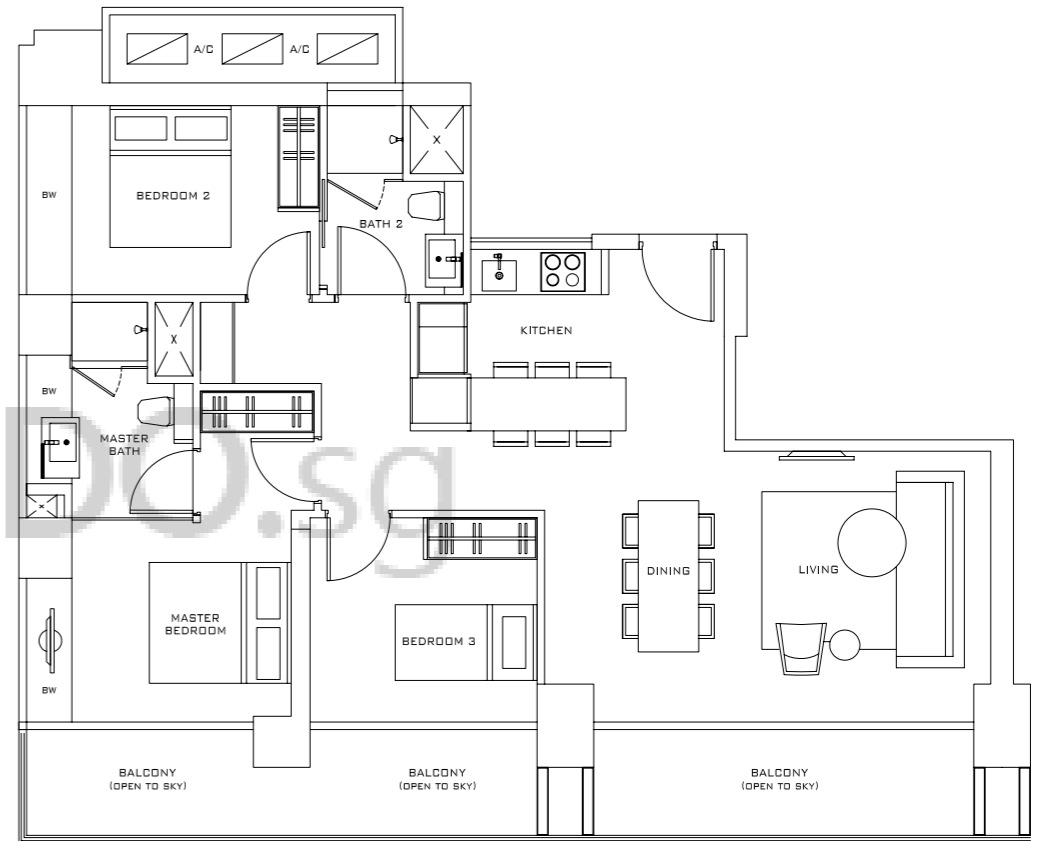
Type C2

89 sq m (957 sq ft)
#61-01/08 to #70-01/08



Type C3A

106 sq m (1,140 sq ft)
#71-06



Type C3B

99 sq m (1,065 sq ft)

#71-03

Type C4

93 sq m (1,001 sq ft)

#71-01/08

