

Unit Distribution

Floor Plans

3-bedroom

Tower A

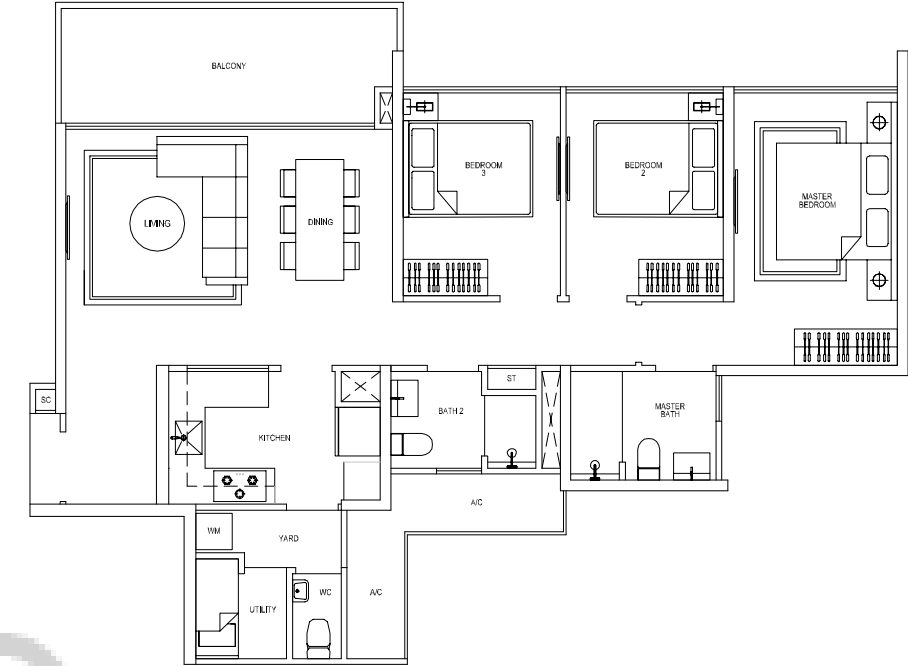
UNIT LEVEL	4	1	2	3
16		PH8	PH4	
15	C1	C1	C2	C2
14	C1	C1	C2	C2
13	C1	C1	C2	C2
12	C1	C1	C2	C2
11	C1	C1	C2	C2
10	C1	C1	C2	C2
9	C1	C1	C2	C2
8	C1	C1	C2	C2
7	C1	C1	C2	C2
6	C1	C1	C2	C2
5	C1	C1	C2	C2
4	C1	C1	C2	C2
3	C1	C1	C2	C2
2	C1	C1	C2	C2
1	C1P2	C1P1	C2P2	C2P3

Tower B

UNIT LEVEL	6	7	8	5
16		PH3	PH8	
15	D2	D1	C1	C1
14	D2	D1	C1	C1
13	D2	D1	C1	C1
12	D2	D1	C1	C1
11	D2	D1	C1	C1
10	D2	D1	C1	C1
9	D2	D1	C1	C1
8	D2	D1	C1	C1
7	D2	D1	C1	C1
6	D2	D1	C1	C1
5	D2	D1	C1	C1
4	D2	D1	C1	C1
3	D2	D1	C1	C1
2	D2	D1	C1	C1
1	D2P	D1P	C1P1	C1P1

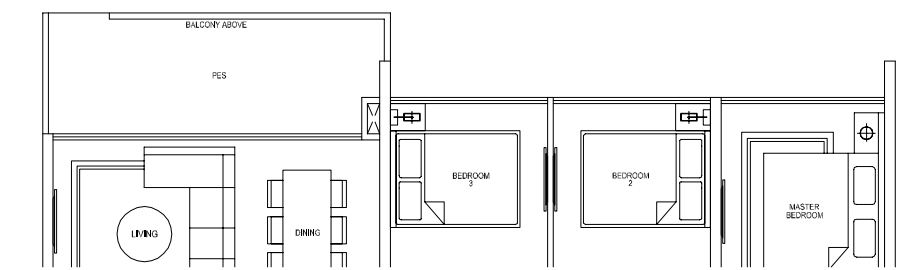
Type A1

106 sq m / 1141 sq ft
 #02-02 to #15-02
 #02-06 to #15-06
 #02-10 to #15-10
 #02-14 to #15-14
 #02-15 to #15-15



Type A1a (Partial plan)

106 sq m / 1141 sq ft
 #01-02
 #01-10
 #01-14
 #01-15

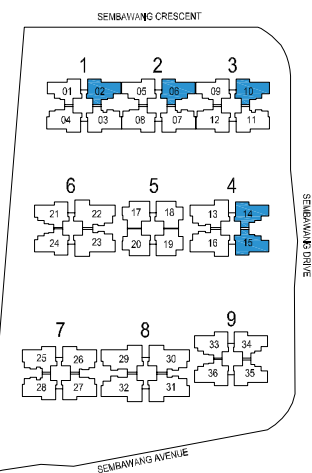
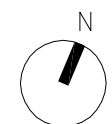


Tower C

UNIT LEVEL	27	28	29	30	31	32	25	26
16		PH2				PH1b		PH1a
15	B1a	A1	A1	B2	B3b	A2	A2	B3a
14	B1a	A1	A1	B2	B3b	A2	A2	B3a
13	B1a	A1	A1	B2	B3b	A2	A2	B3a
12	B1a	A1	A1	B2	B3b	A2	A2	B3a
11	B1a	A1	A1	B2	B3b	A2	A2	B3a
10	B1a	A1	A1	B2	B3b	A2	A2	B3a
9	B1a	A1	A1	B2	B3b	A2	A2	B3a
8	B1a	A1	A1	B2	B3b	A2	A2	B3a
7	B1a	A1	A1	B2	B3b	A2	A2	B3a
6	B1a	A1	A1	B2	B3b	A2	A2	B3a
5	B1a	A1	A1	B2	B3b	A2	A2	B3a
4	B1a	A1	A1	B2	B3b	A2	A2	B3a
3	B1a	A1	A1	B2	B3b	A2	A2	B3a
2	B1a	A1	A1	B2	B3b	A2	A2	B3a
1	B1aP	A1P	A1P	B2P1	B3bP	A2P	A2P	B3aP1

Legend

- 3-bedroom
- 3-bedroom + study
- 4-bedroom
- 4-bedroom + study
- 5-bedroom
- 5-bedroom Maisonette



Key plan (Not to scale)

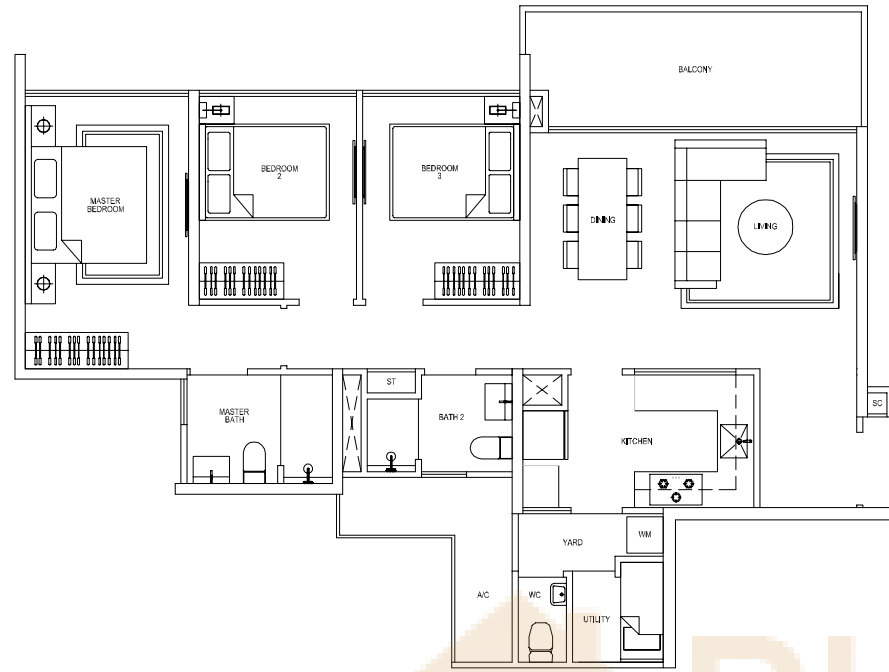
Areas include A/C ledge, balcony and PES. Orientations and facings will differ depending on the unit you are purchasing. Please refer to the key plan. The plans are subjected to change as may be required or approved by relevant authorities. All areas are approximate and subject to final survey. The developer and its agents cannot be held liable for any inaccuracies.

Floor Plans

3-bedroom

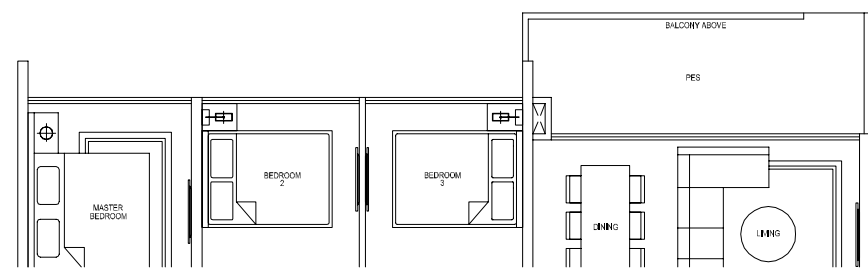
Type A2

107 sq m / 1152 sq ft
 #02-01 to #15-01
 #02-05 to #15-05
 #02-09 to #15-09
 #02-34 to #15-34
 #02-35 to #15-35



Type A2a (Partial plan)

107 sq m / 1152 sq ft
 #01-01
 #01-09
 #01-34
 #01-35



Floor Plans

3-bedroom + study

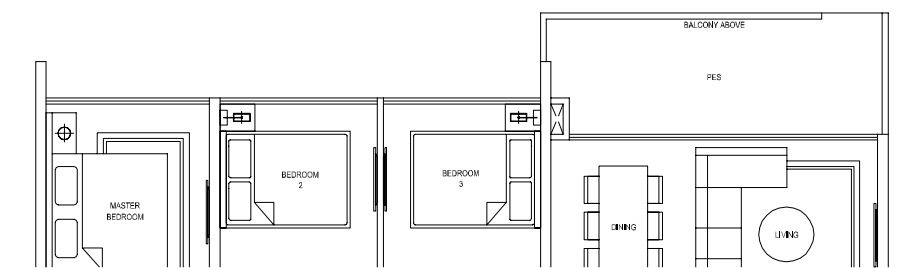
Type B1

115 sq m / 1238 sq ft
 #02-21 to #15-21
 #02-24 to #15-24
 #02-33 to #15-33
 #02-36 to #15-36

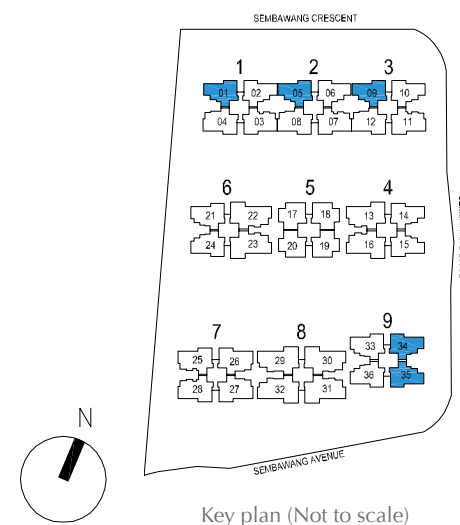


Type B1a (Partial plan)

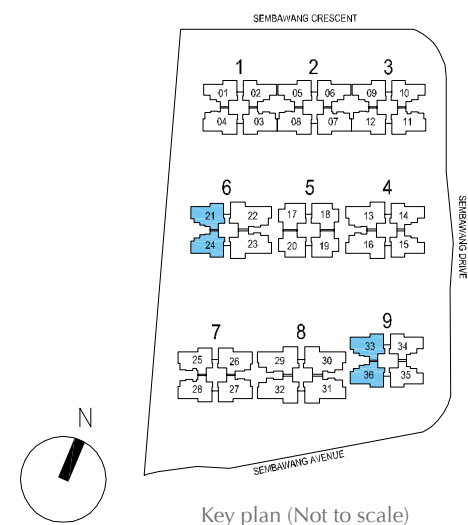
115 sq m / 1238 sq ft
 #01-21
 #01-24
 #01-33
 #01-36



Areas include A/C ledge, balcony and PES. Orientations and facings will differ depending on the unit you are purchasing. Please refer to the key plan. The plans are subjected to change as may be required or approved by relevant authorities. All areas are approximate and subject to final survey. The developer and its agents cannot be held liable for any inaccuracies.



Areas include A/C ledge, balcony and PES. Orientations and facings will differ depending on the unit you are purchasing. Please refer to the key plan. The plans are subjected to change as may be required or approved by relevant authorities. All areas are approximate and subject to final survey. The developer and its agents cannot be held liable for any inaccuracies.



Floor Plans

4-bedroom

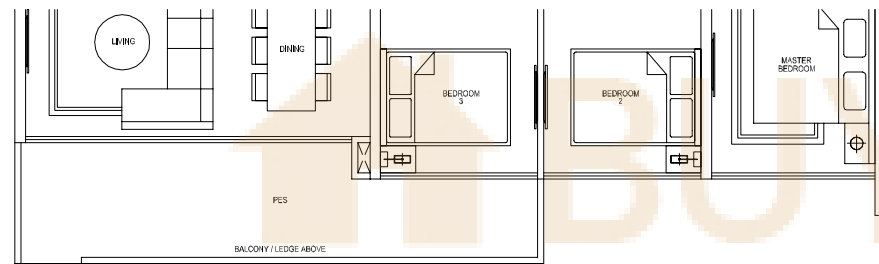
Type C1

121 sq m / 1302 sq ft
 #02-03 to #15-03
 #02-07 to #15-07
 #02-11 to #15-11
 #02-25 to #15-25
 #02-28 to #15-28



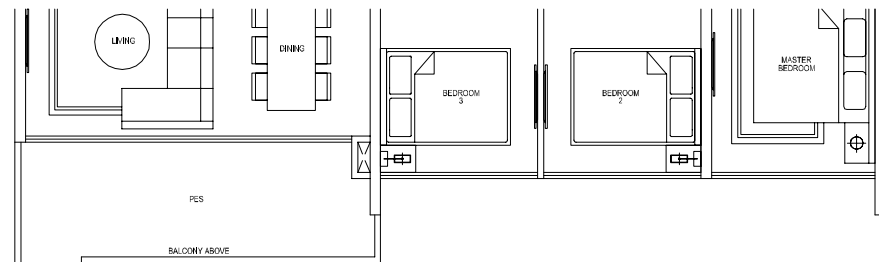
Type C1a (Partial plan)

125 sq m / 1346 sq ft
 #01-03
 #01-07
 #01-11
 #01-25



Type C1b (Partial plan)

121 sq m / 1302 sq ft
 #01-28

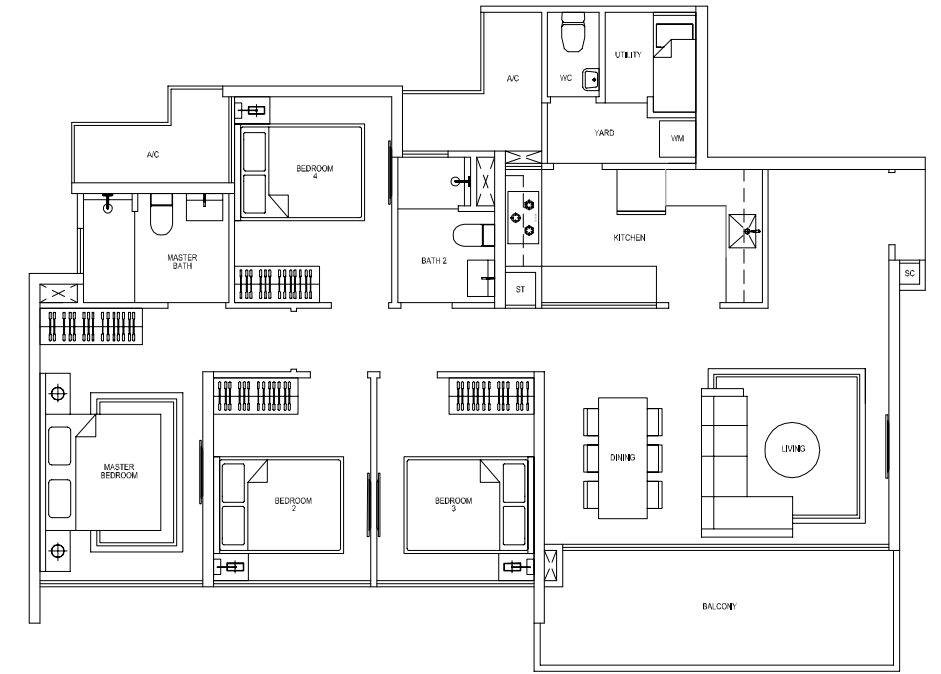


Floor Plans

4-bedroom

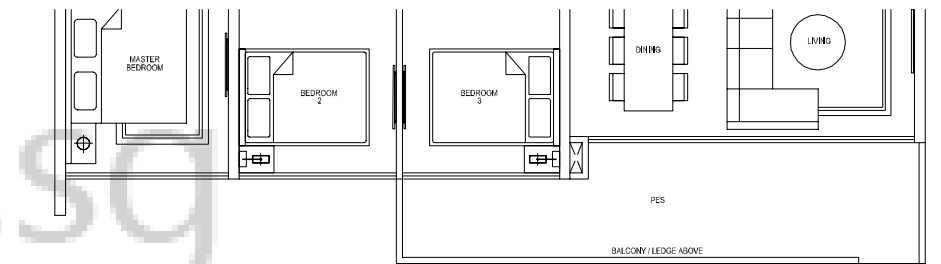
Type C2

122 sq m / 1313 sq ft
 #02-04 to #15-04
 #02-08 to #15-08
 #02-12 to #15-12
 #02-26 to #15-26
 #02-27 to #15-27



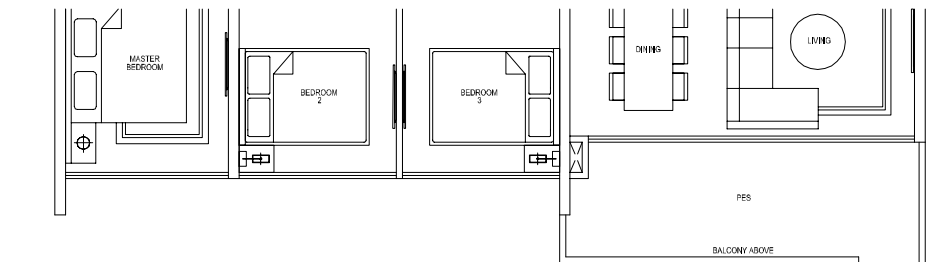
Type C2a (Partial plan)

126 sq m / 1356 sq ft
 #01-04
 #01-08
 #01-12
 #01-26

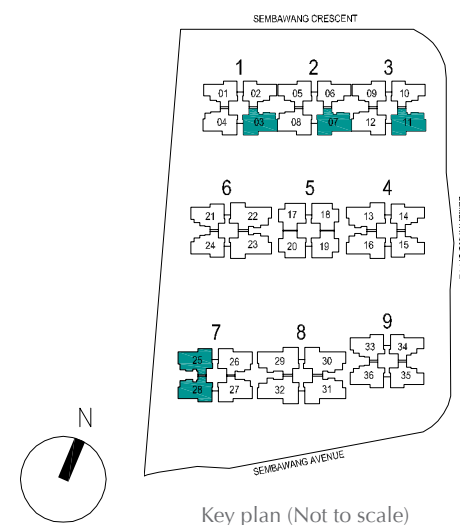


Type C2b (Partial plan)

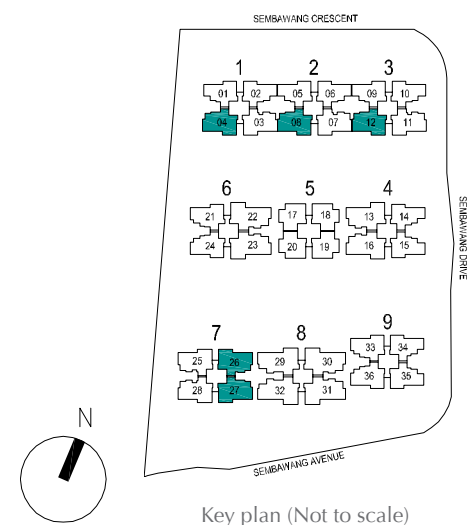
122 sq m / 1313 sq ft
 #01-27



Areas include A/C ledge, balcony and PES. Orientations and facings will differ depending on the unit you are purchasing. Please refer to the key plan. The plans are subjected to change as may be required or approved by relevant authorities. All areas are approximate and subject to final survey. The developer and its agents cannot be held liable for any inaccuracies.



Areas include A/C ledge, balcony and PES. Orientations and facings will differ depending on the unit you are purchasing. Please refer to the key plan. The plans are subjected to change as may be required or approved by relevant authorities. All areas are approximate and subject to final survey. The developer and its agents cannot be held liable for any inaccuracies.



Floor Plans

4-bedroom + study

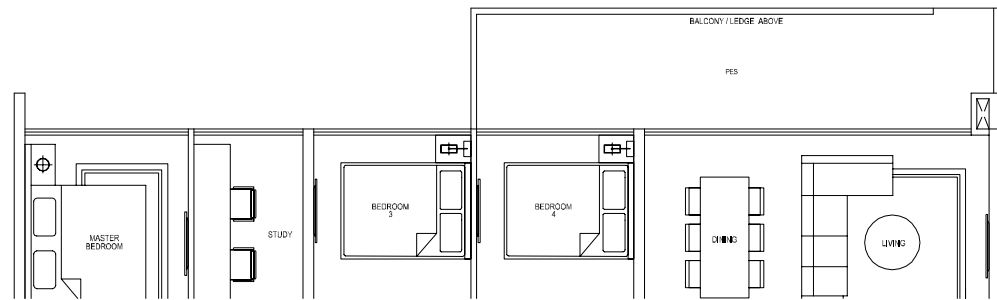
Type D1

142 sq m / 1528 sq ft
 #02-13 to #15-13
 #02-16 to #15-16



Type D1a (Partial plan)

147 sq m / 1582 sq ft
 #01-13
 #01-16

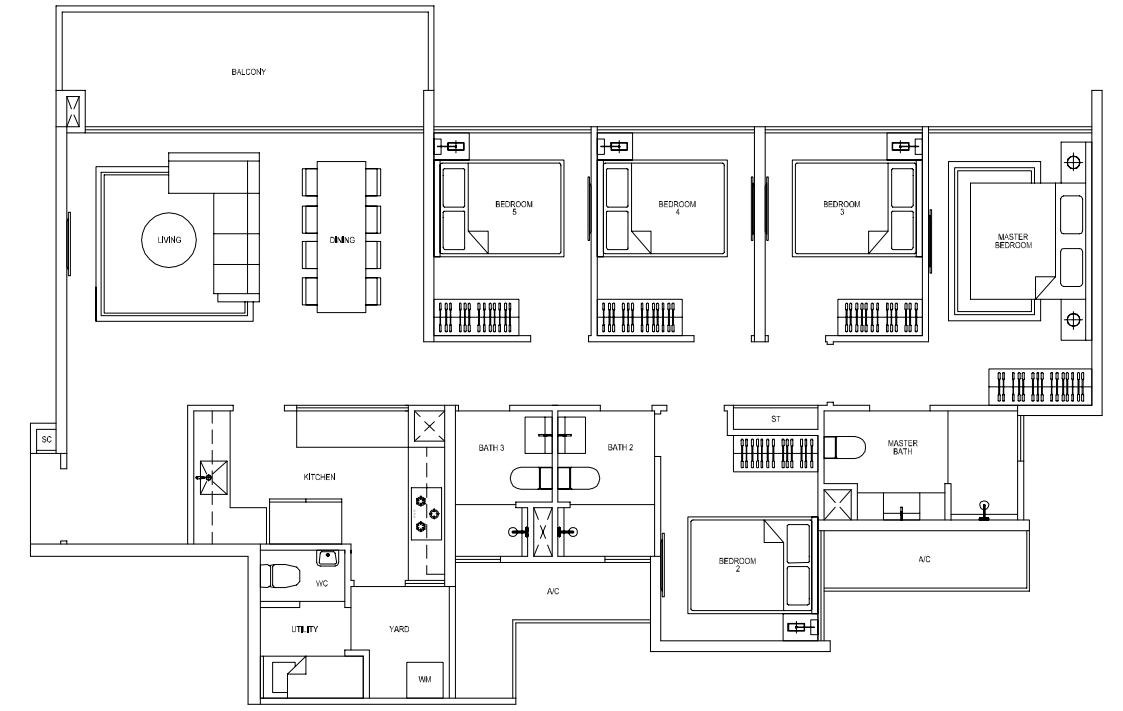


Floor Plans

5-bedroom

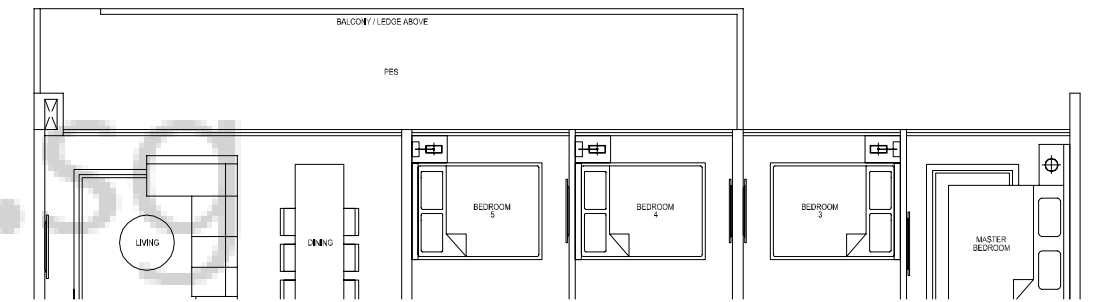
Type E1

148 sq m / 1593 sq ft
 #02-22 to #15-22
 #02-23 to #15-23
 #02-30 to #15-30
 #02-31 to #15-31



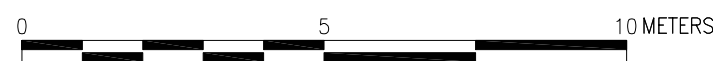
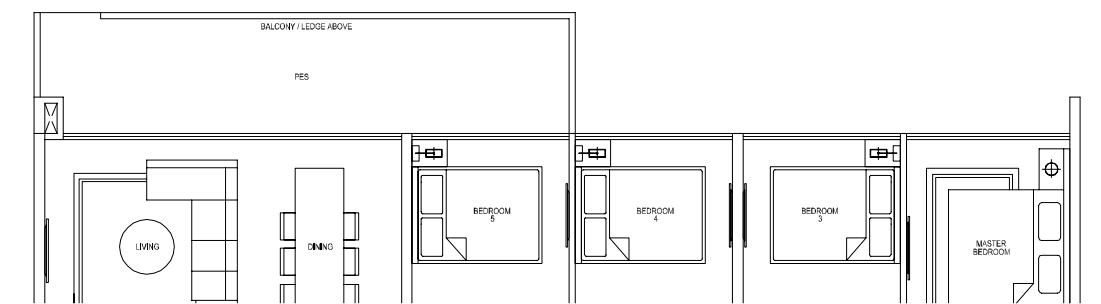
Type E1a (Partial plan)

159 sq m / 1711 sq ft
 #01-22
 #01-23
 #01-30

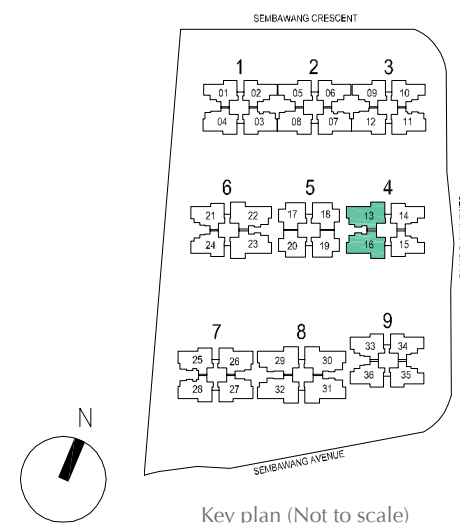


Type E1b (Partial plan)

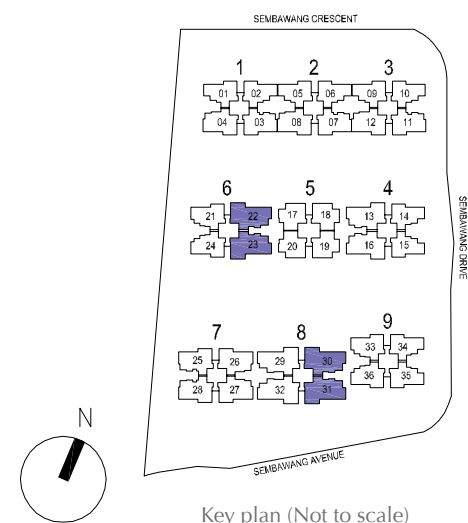
154 sq m / 1658 sq ft
 #01-31



Areas include A/C ledge, balcony and PES. Orientations and facings will differ depending on the unit you are purchasing. Please refer to the key plan. The plans are subjected to change as may be required or approved by relevant authorities. All areas are approximate and subject to final survey. The developer and its agents cannot be held liable for any inaccuracies.



Areas include A/C ledge, balcony and PES. Orientations and facings will differ depending on the unit you are purchasing. Please refer to the key plan. The plans are subjected to change as may be required or approved by relevant authorities. All areas are approximate and subject to final survey. The developer and its agents cannot be held liable for any inaccuracies.

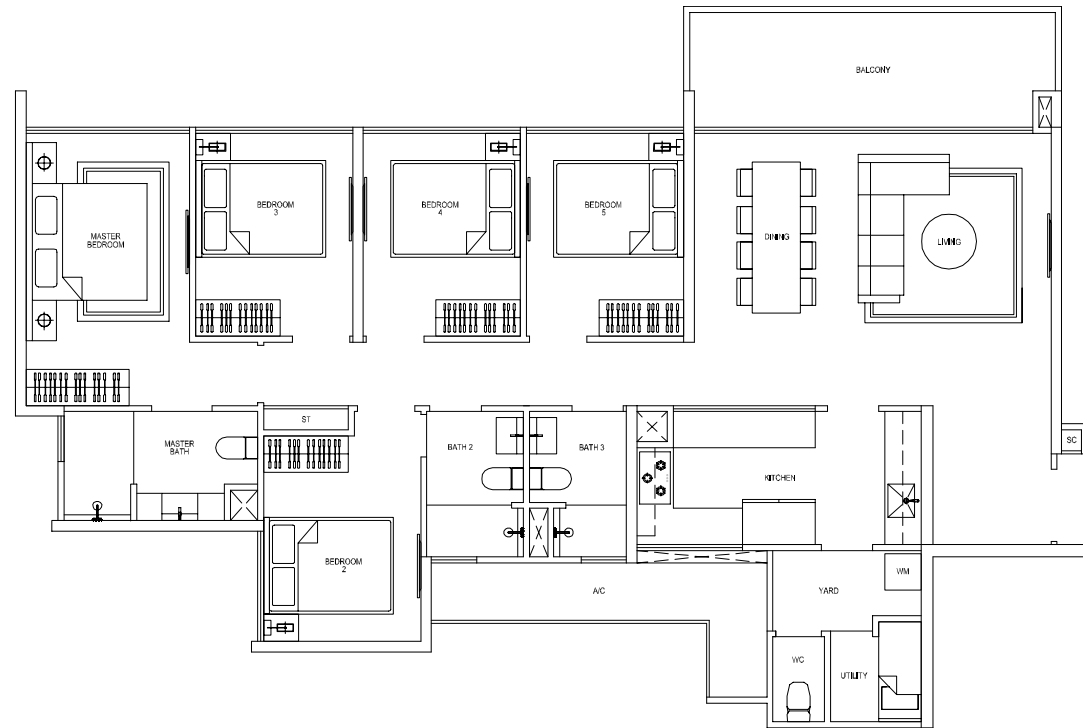


Floor Plans

5-bedroom

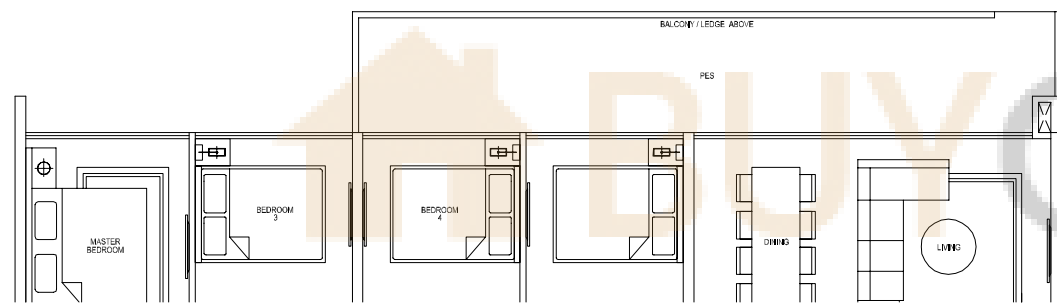
Type E2

148 sq m / 1593 sq ft
 #02-29 to #15-29
 #02-32 to #15-32



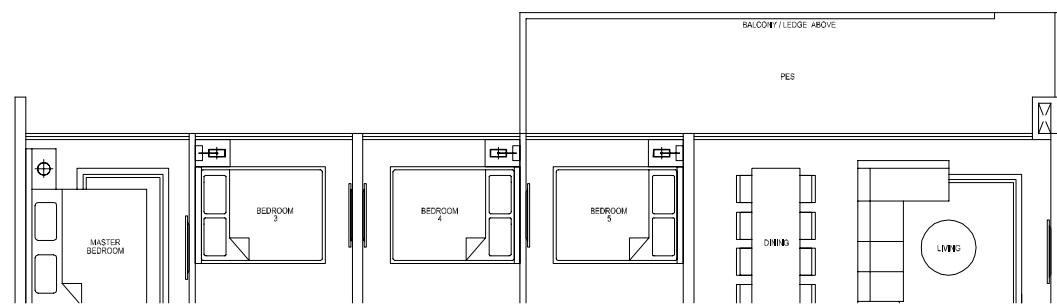
Type E2a (Partial plan)

159 sq m / 1711 sq ft
 #01-29

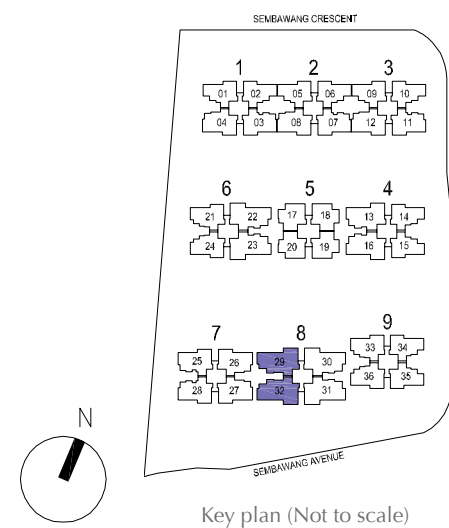


Type E2b (Partial plan)

153 sq m / 1647 sq ft
 #01-32



Areas include A/C ledge, balcony and PES. Orientations and facings will differ depending on the unit you are purchasing. Please refer to the key plan. The plans are subjected to change as may be required or approved by relevant authorities. All areas are approximate and subject to final survey. The developer and its agents cannot be held liable for any inaccuracies.

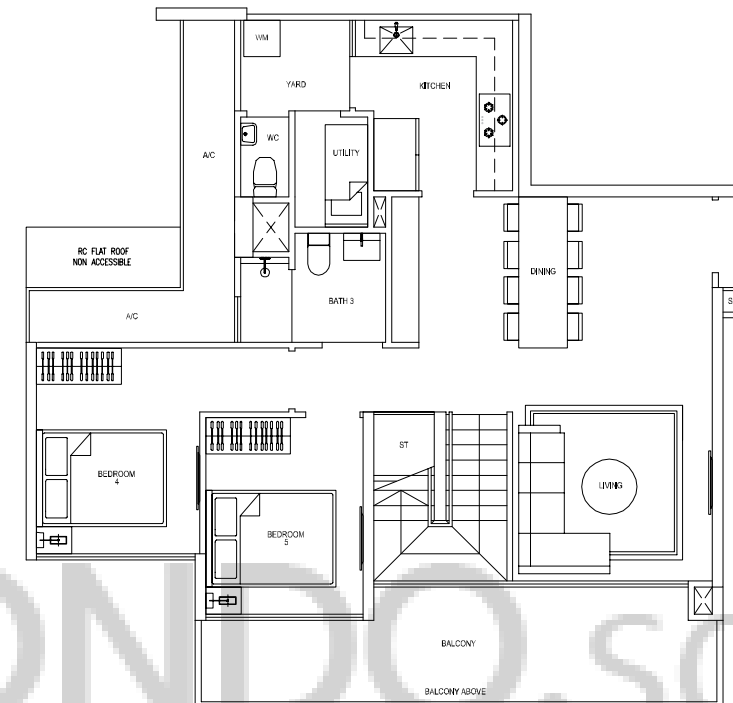


Floor Plans

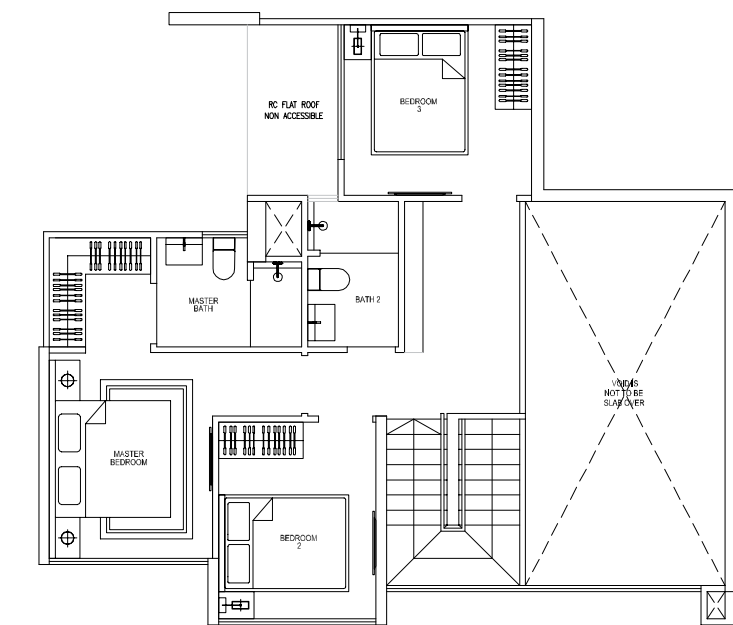
5-bedroom Maisonette

Type F1

160 sq m / 1722 sq ft
 #02-17 to #07-17
 #02-18 to #07-18
 #02-19 to #07-19
 #02-20 to #07-20



Lower



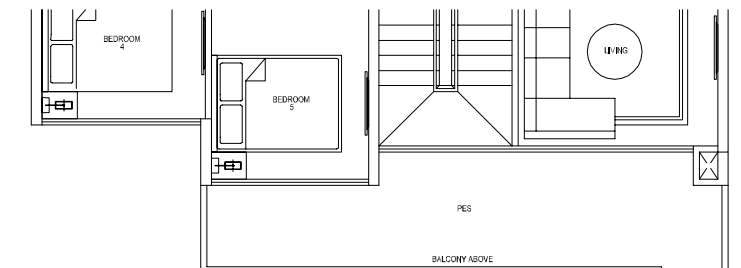
Upper



Areas include A/C ledge, balcony and PES. Orientations and facings will differ depending on the unit you are purchasing. Please refer to the key plan. The plans are subjected to change as may be required or approved by relevant authorities. All areas are approximate and subject to final survey. The developer and its agents cannot be held liable for any inaccuracies.

Type F1a (Partial plan)

160 sq m / 1722 sq ft
 #01-17
 #01-18
 #01-19
 #01-20



Lower

