

1 BEDROOM

TYPE A1

43 SQM / 463 SQFT
INCLUSIVE OF 7 SQM PES / BALCONY
& 1 SQM AC LEDGE

UNIT

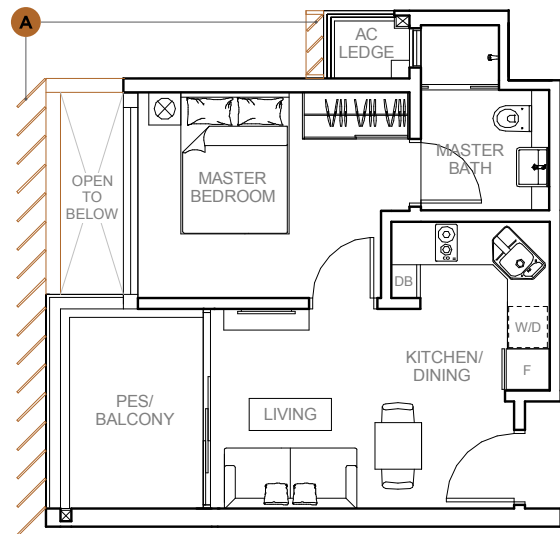
BLOCK 7
#01-100 (PES)

BLOCK 27
#02-100 TO #06-100

SCREENING

A

BLOCK 27
#06-100



TYPE A2

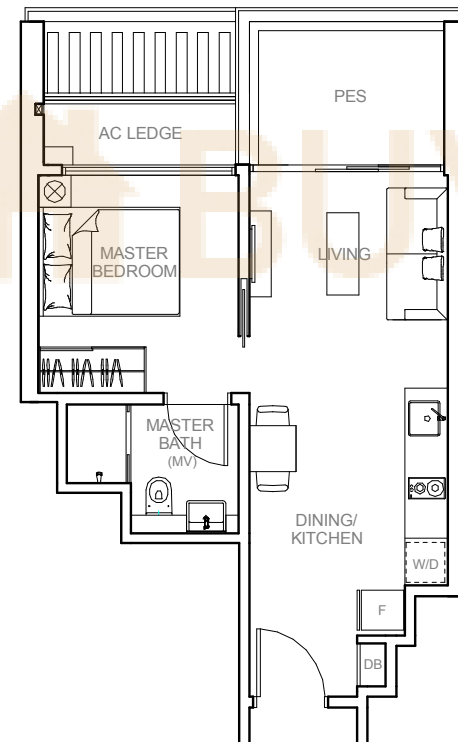
47 SQM / 506 SQFT
INCLUSIVE OF 7 SQM PES
& 3 SQM AC LEDGE

UNIT

BLOCK 7
#01-11

BLOCK 9
#01-21

BLOCK 11
#01-39*



TYPE A3

47 SQM / 506 SQFT
INCLUSIVE OF 7 SQM PES
& 3 SQM AC LEDGE

UNIT

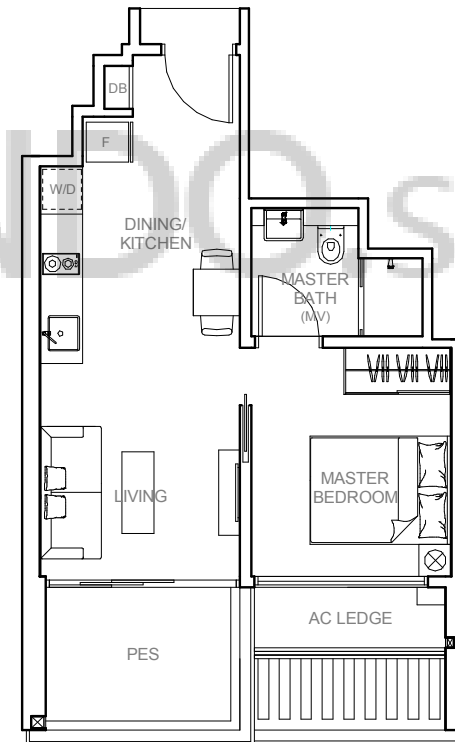
BLOCK 17
#02-58*

BLOCK 19
#02-67*

BLOCK 21
#01-68

BLOCK 23
#01-74

BLOCK 25
#01-91*



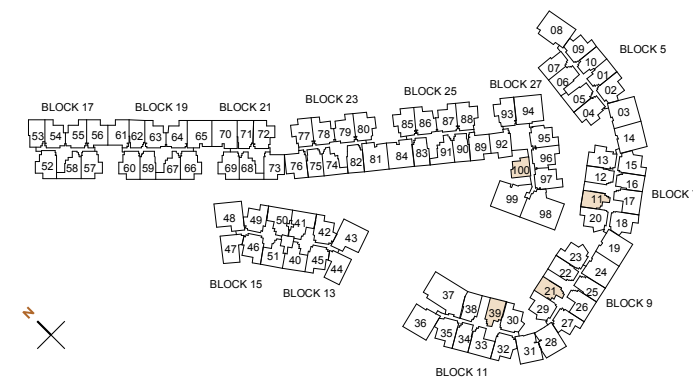
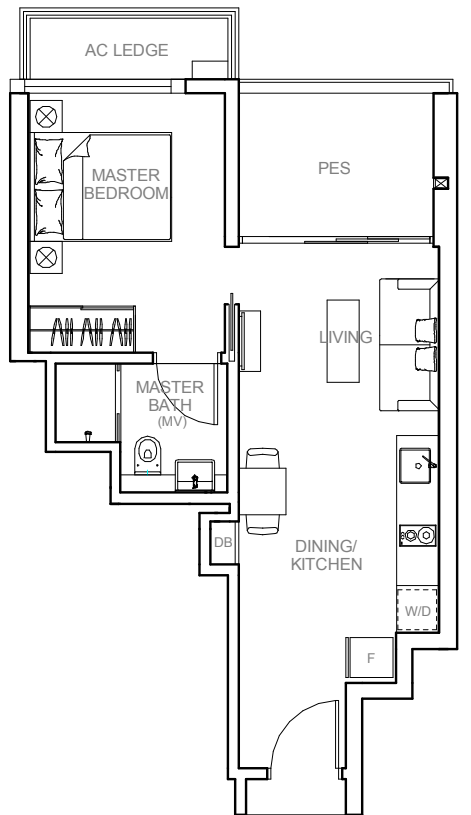
TYPE A4

48 SQM / 517 SQFT
INCLUSIVE OF 7 SQM PES
& 3 SQM AC LEDGE

UNIT

BLOCK 13
#01-41

BLOCK 15
#01-50*



0 1M 3M 5M

F FRIDGE **DB** DISTRIBUTION BOARD CABINET
W/D WASHER CUM DRYER * MIRRORED UNIT

1 BEDROOM

TYPE A3

47 SQM / 506 SQFT
INCLUSIVE OF 7 SQM PES
& 3 SQM AC LEDGE

UNIT

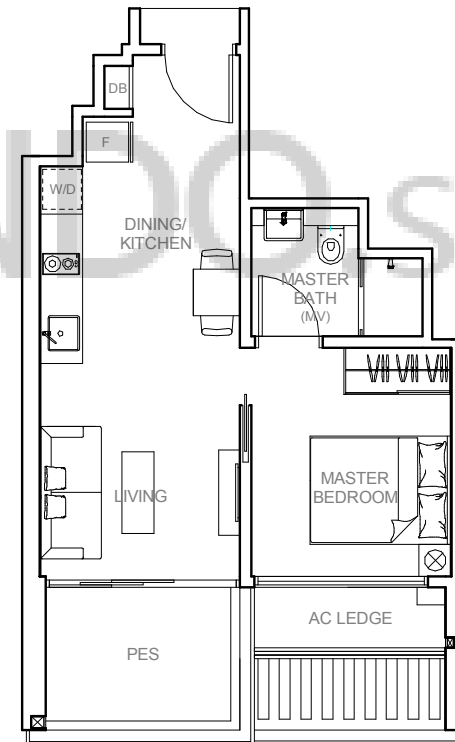
BLOCK 17
#02-58*

BLOCK 19
#02-67*

BLOCK 21
#01-68

BLOCK 23
#01-74

BLOCK 25
#01-91*



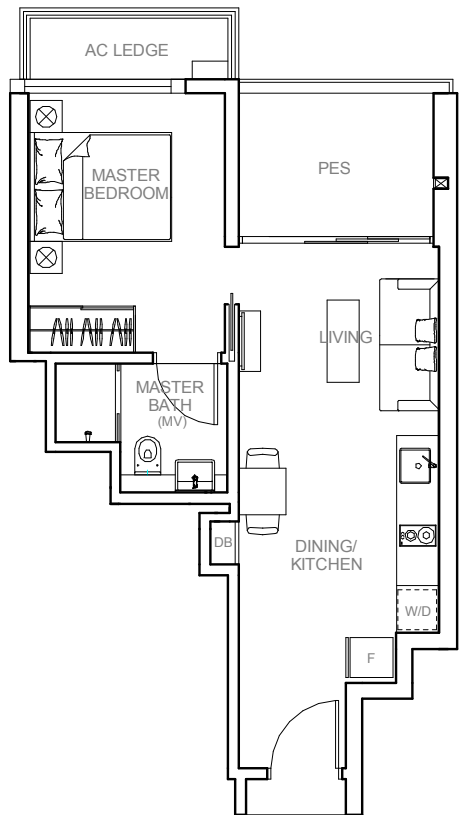
TYPE A4

48 SQM / 517 SQFT
INCLUSIVE OF 7 SQM PES
& 3 SQM AC LEDGE

UNIT

BLOCK 13
#01-41

BLOCK 15
#01-50*



0 1M 3M 5M

F FRIDGE **W/D** WASHER CUM DRYER
DB DISTRIBUTION BOARD CABINET * MIRRORED UNIT

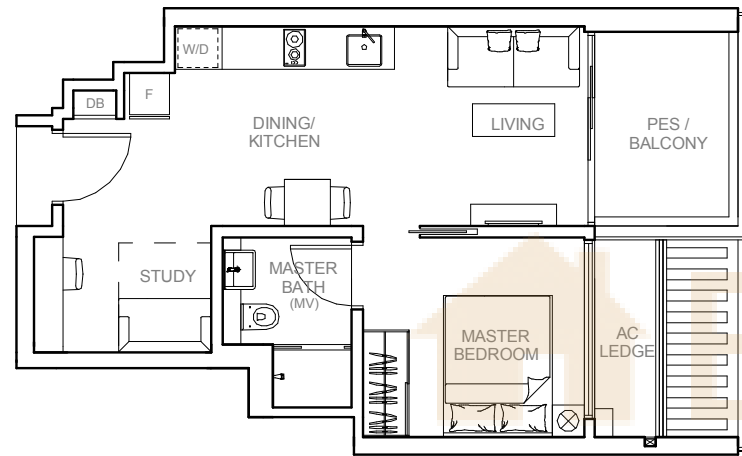
1 BEDROOM + STUDY

TYPE A5

52 SQM / 560 SQFT
INCLUSIVE OF 7 SQM PES / BALCONY
& 3 SQM AC LEDGE

UNIT

BLOCK 5
#01-01 (PES)*
#02-01 TO #05-01*
#01-10 (PES)
#02-10 TO #05-10



1 BEDROOM + STUDY

TYPE A6

53 SQM / 570 SQFT
INCLUSIVE OF 7 SQM PES / BALCONY
& 3 SQM AC LEDGE

UNIT

BLOCK 7
#01-12 (PES)*
#02-12 TO #04-12*
#01-16 (PES)*
#02-16 TO #04-16*

BLOCK 9
#01-22 (PES)*
#02-22 TO #04-22*
#01-25 (PES)*
#02-25 TO #04-25*

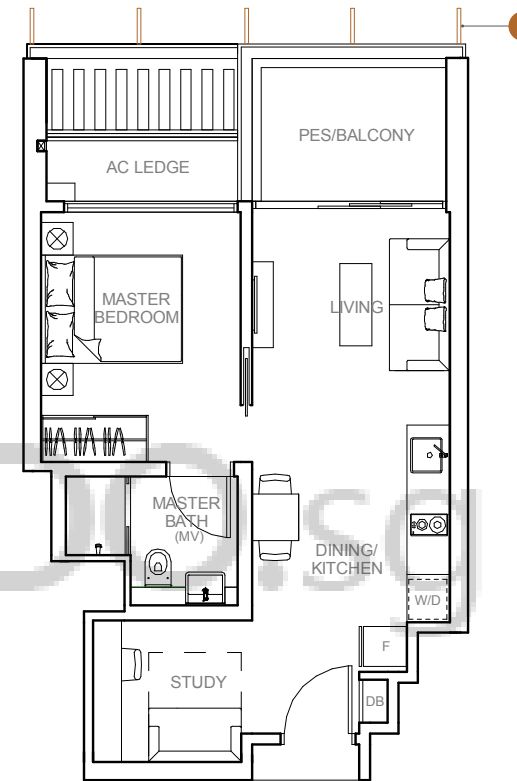
BLOCK 11
#01-34 (PES)
#02-34 TO #04-34

BLOCK 19
#02-59 (PES)
#03-59 TO #06-59
#01-62 (PES)
#02-62 TO #06-62

BLOCK 21
#01-71 (PES)
#02-71 TO #07-71

BLOCK 23
#01-75 (PES)*
#02-75 TO #06-75*
#01-82 (PES)*
#02-82 TO #06-82*

BLOCK 25
#01-83 (PES)
#02-83 TO #06-83
#01-90 (PES)
#02-90 TO #06-90



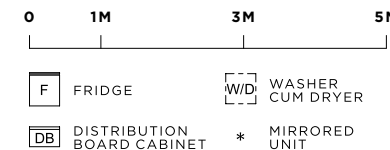
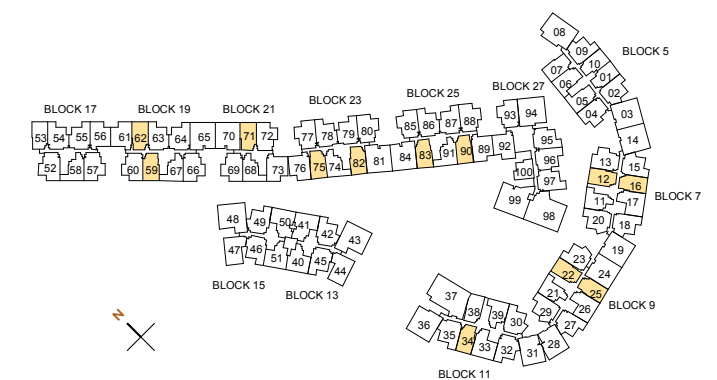
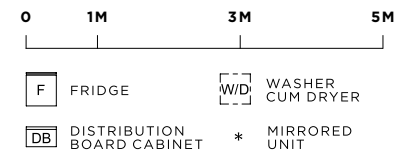
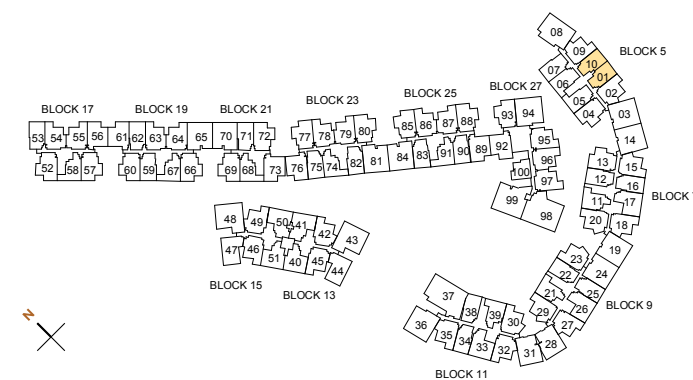
SCREENING



BLOCK 21
#07-71

BLOCK 23
#06-75*
#06-82*

BLOCK 25
#06-83
#06-90



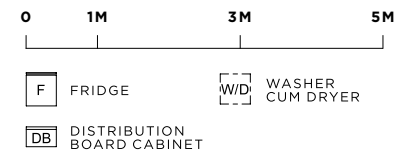
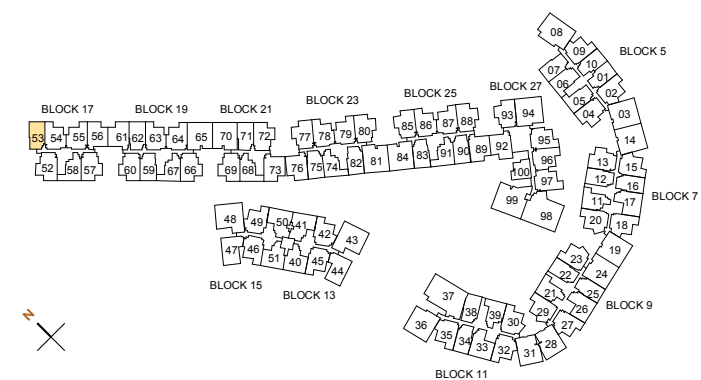
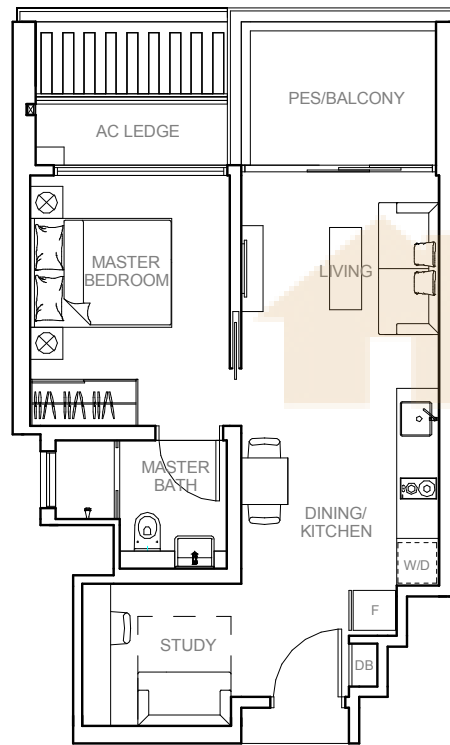
1 BEDROOM + STUDY

TYPE A6a

53 SQM / 570 SQFT
INCLUSIVE OF 7 SQM PES / BALCONY
& 3 SQM AC LEDGE

UNIT

BLOCK 17
#01-53 (PES)
#02-53



All plans are subjected to amendments as may be approved by the relevant authorities. Floor areas are approximate measurements and are subjected to final survey. BP Approval No. A0712-01131-2013-BP01 dated 09/10/2014

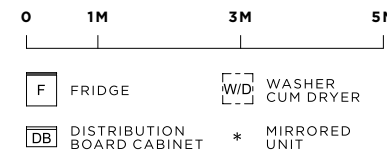
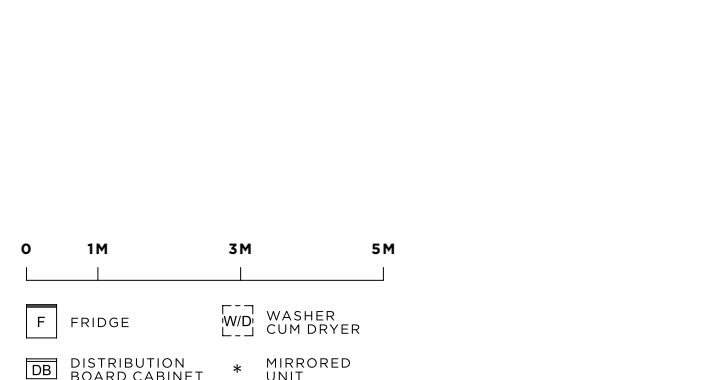
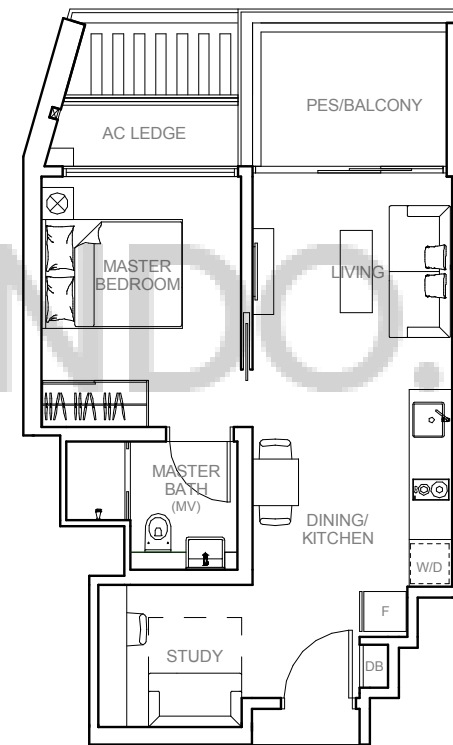
1 BEDROOM + STUDY

TYPE A7

53 SQM / 570 SQFT
INCLUSIVE OF 7 SQM PES / BALCONY
& 3 SQM AC LEDGE

UNIT

BLOCK 11
#01-38 (PES)
#02-38 TO #04-38



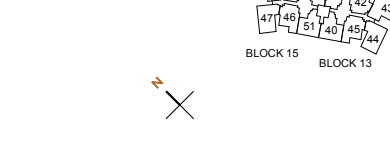
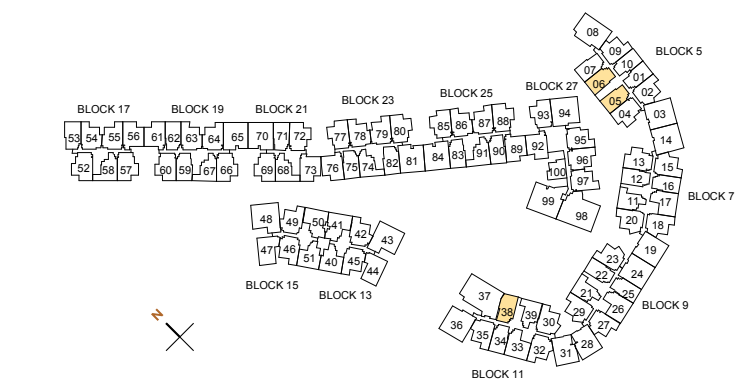
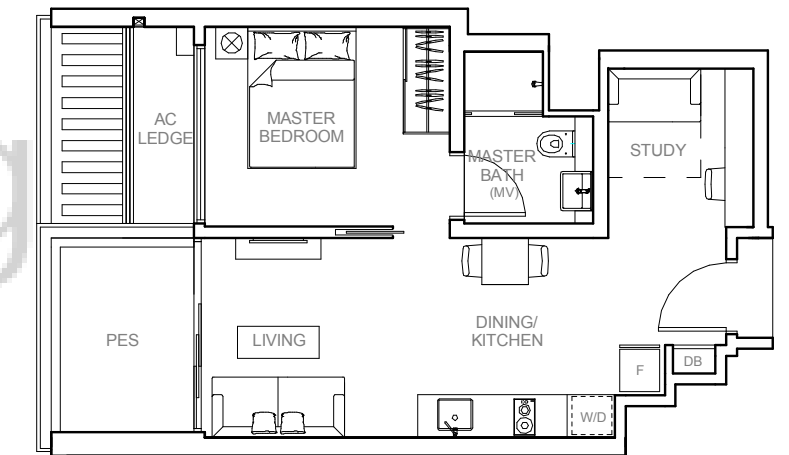
All plans are subjected to amendments as may be approved by the relevant authorities. Floor areas are approximate measurements and are subjected to final survey. BP Approval No. A0712-01131-2013-BP01 dated 09/10/2014

TYPE A8-G

53 SQM / 570 SQFT
INCLUSIVE OF 7 SQM PES
& 3 SQM AC LEDGE

UNIT

BLOCK 5
#01-05
#01-06*



All plans are subjected to amendments as may be approved by the relevant authorities. Floor areas are approximate measurements and are subjected to final survey. BP Approval No. A0712-01131-2013-BP01 dated 09/10/2014

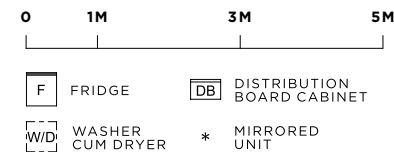
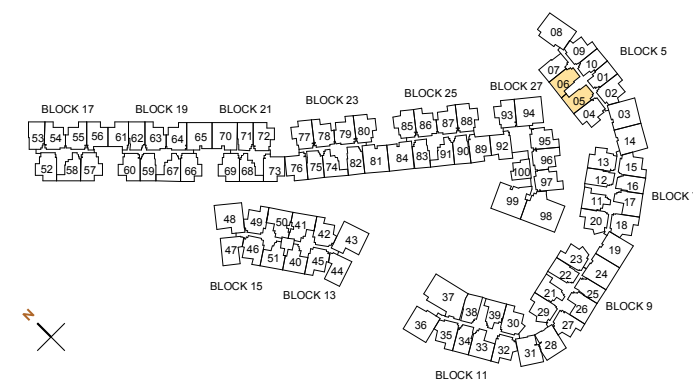
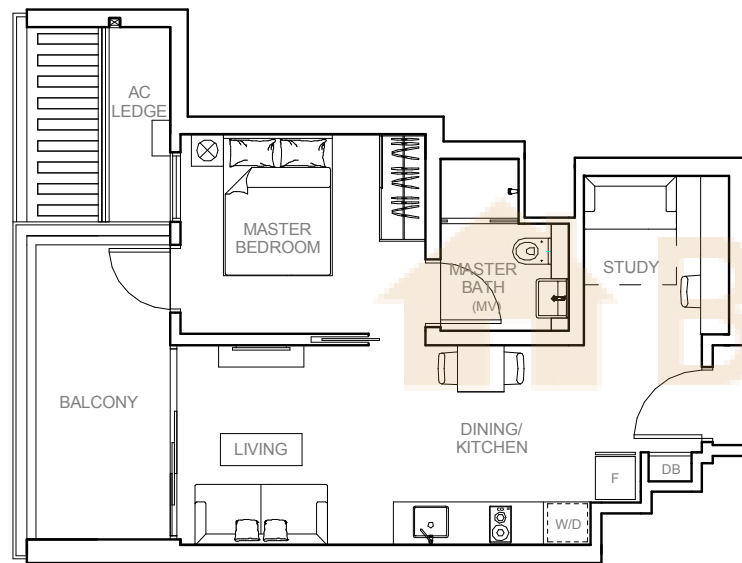
1 BEDROOM + STUDY

TYPE A8

57 SQM / 614 SQFT
INCLUSIVE OF 11 SQM BALCONY
& 3 SQM AC LEDGE

UNIT

BLOCK 5
#02-05 TO #05-05
#02-06 TO #05-06*



2 BEDROOM

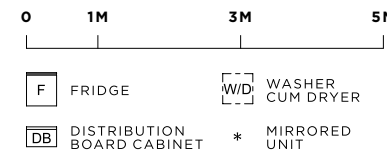
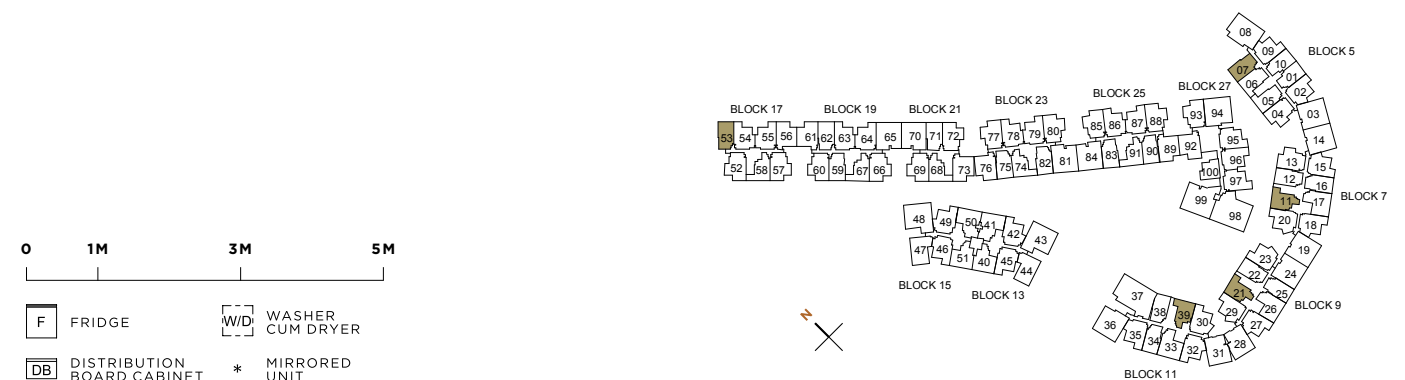
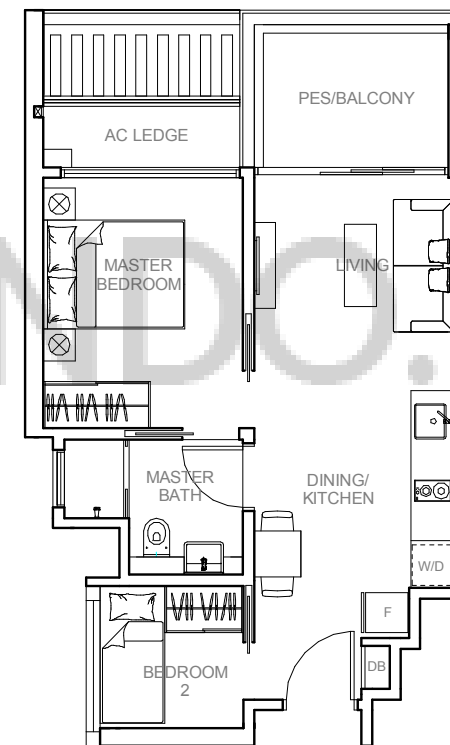
TYPE B1

53 SQM / 570 SQFT
INCLUSIVE OF 7 SQM PES / BALCONY
& 3 SQM AC LEDGE

UNIT

BLOCK 5
#01-07 (PES)*
#02-07 TO #05-07*

BLOCK 17
#03-53
#04-53



TYPE B2

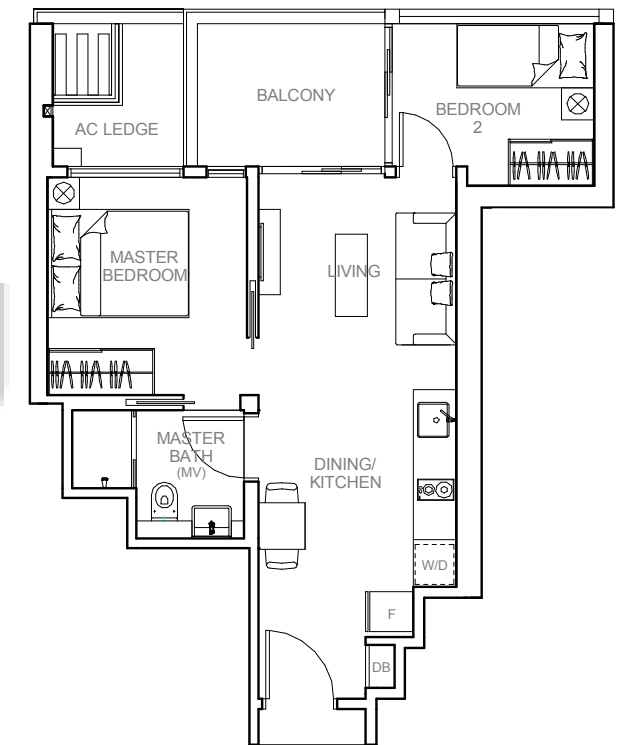
54 SQM / 581 SQFT
INCLUSIVE OF 7 SQM BALCONY
& 3 SQM AC LEDGE

UNIT

BLOCK 7
#02-11 TO #04-11

BLOCK 9
#02-21 TO #04-21

BLOCK 11
#02-39 TO #04-39*



2 BEDROOM

TYPE B3

55 SQM / 592 SQFT
INCLUSIVE OF 9 SQM BALCONY
& 4 SQM AC LEDGE

UNIT

BLOCK 17
#03-58*
#04-58*

BLOCK 19
#03-67 TO #06-67*

BLOCK 21
#02-68 TO #07-68

BLOCK 23
#02-74 TO #06-74

BLOCK 25
#02-91 TO #06-91*

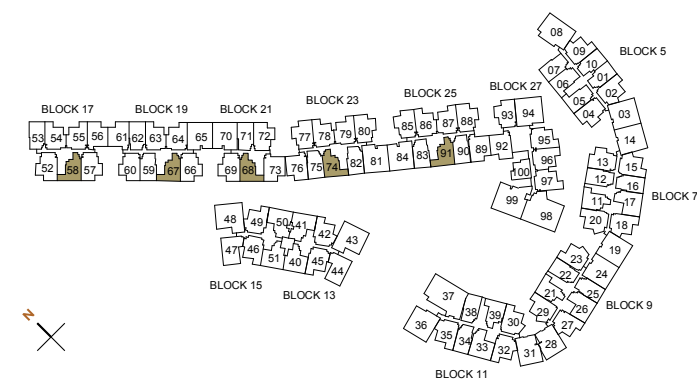
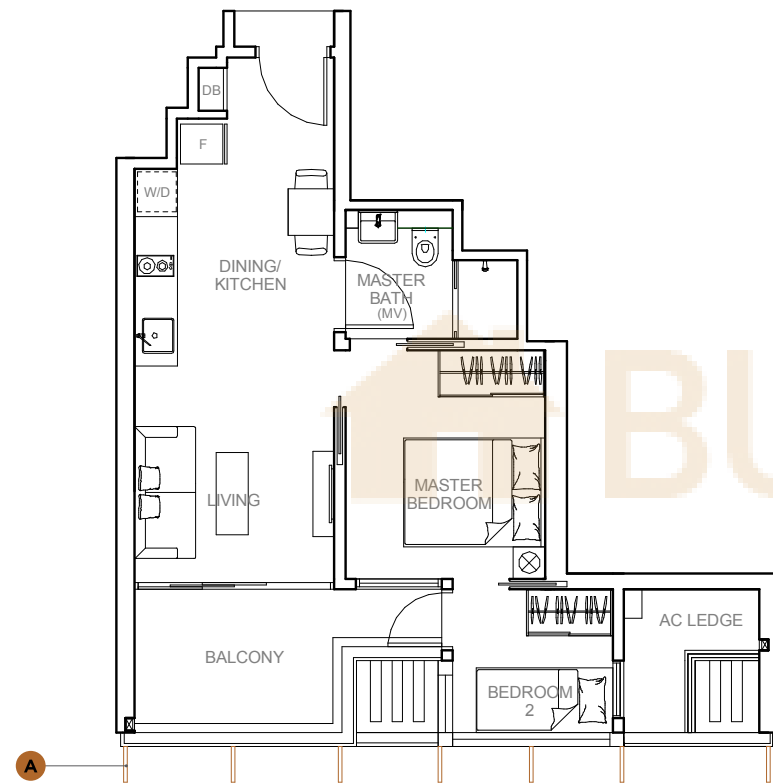
SCREENING

A

BLOCK 21
#07-68

BLOCK 23
#06-74

BLOCK 25
#06-91*



0 1M 3M 5M

F FRIDGE W/D WASHER CUM DRYER
DB DISTRIBUTION BOARD CABINET * MIRRORED UNIT

2 BEDROOM

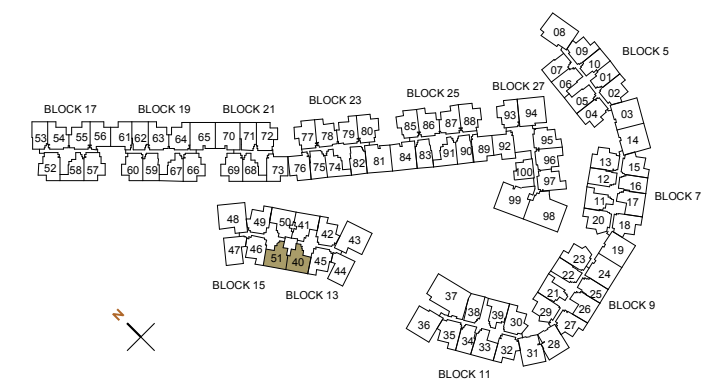
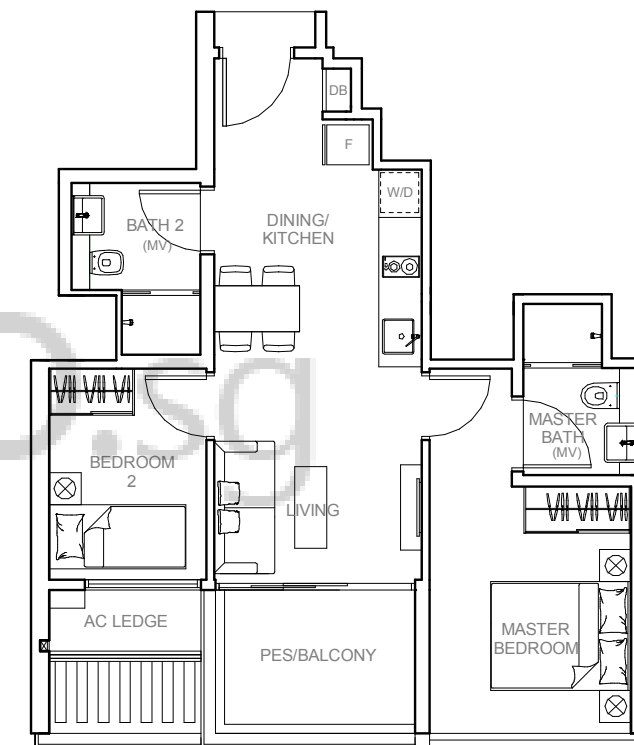
TYPE B4

62 SQM / 667 SQFT
INCLUSIVE OF 7 SQM PES / BALCONY
& 3 SQM AC LEDGE

UNIT

BLOCK 13
#01-40 (PES)
#02-40 TO #04-40

BLOCK 15
#01-51 (PES)*
#02-51 TO #04-51*



0 1M 3M 5M

F FRIDGE W/D WASHER CUM DRYER
DB DISTRIBUTION BOARD CABINET * MIRRORED UNIT

2 BEDROOM

2-BEDROOM + STUDY

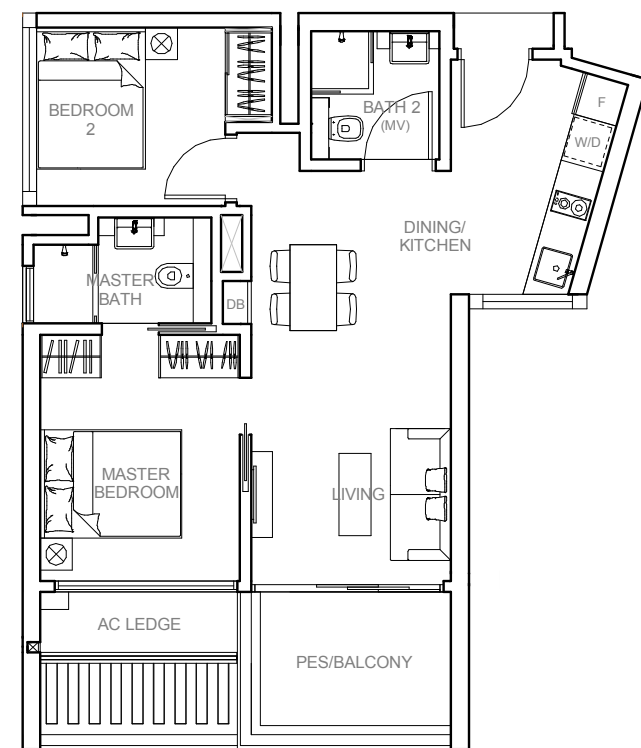
TYPE B5

65 SQM / 700 SQFT
INCLUSIVE OF 7 SQM PES / BALCONY
& 3 SQM AC LEDGE

UNIT

BLOCK 13
#01-44 (PES)*
#02-44 TO #04-44*

BLOCK 15
#01-47 (PES)
#02-47 TO #04-47



TYPE B6

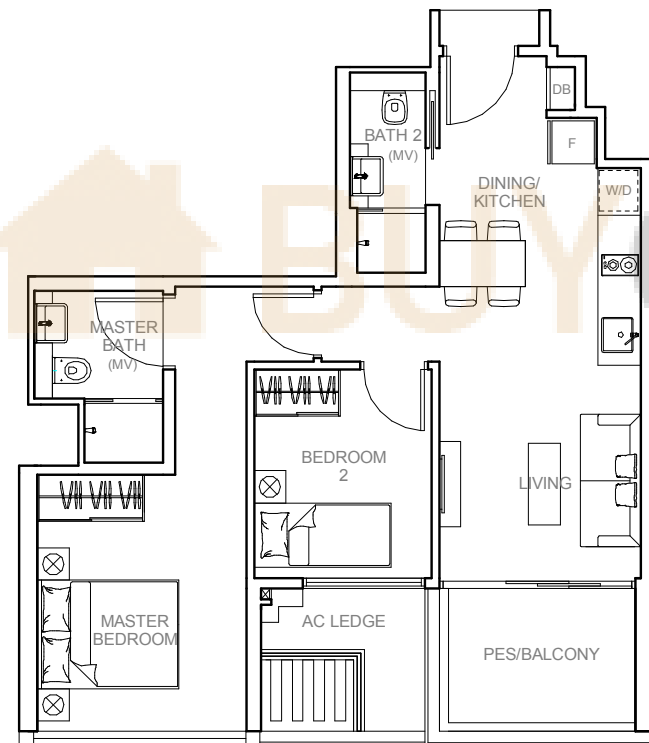
67 SQM / 721 SQFT
INCLUSIVE OF 7 SQM PES / BALCONY
& 4 SQM AC LEDGE

UNIT

BLOCK 7
#01-17 (PES)
#02-17 TO #04-17

BLOCK 9
#01-26 (PES)
#02-26 TO #04-26

BLOCK 11
#01-33 (PES)*
#02-33 TO #04-33*



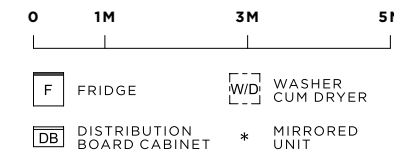
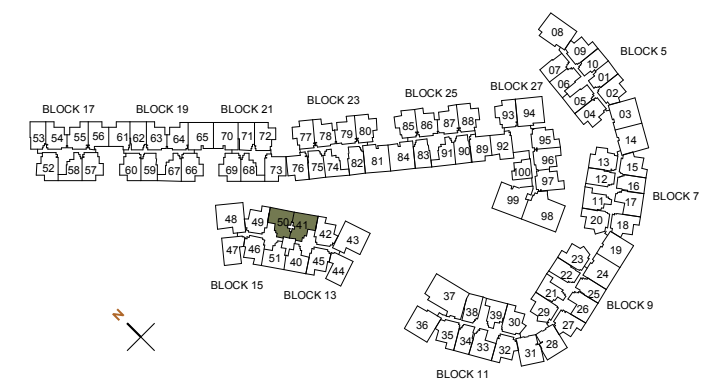
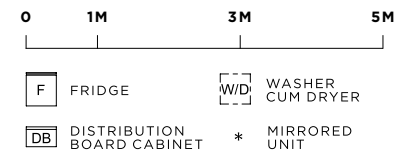
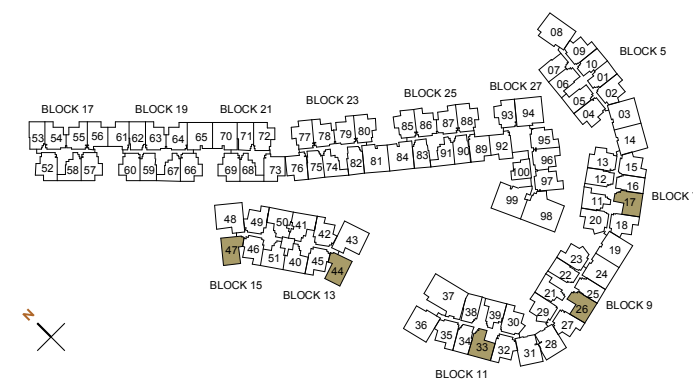
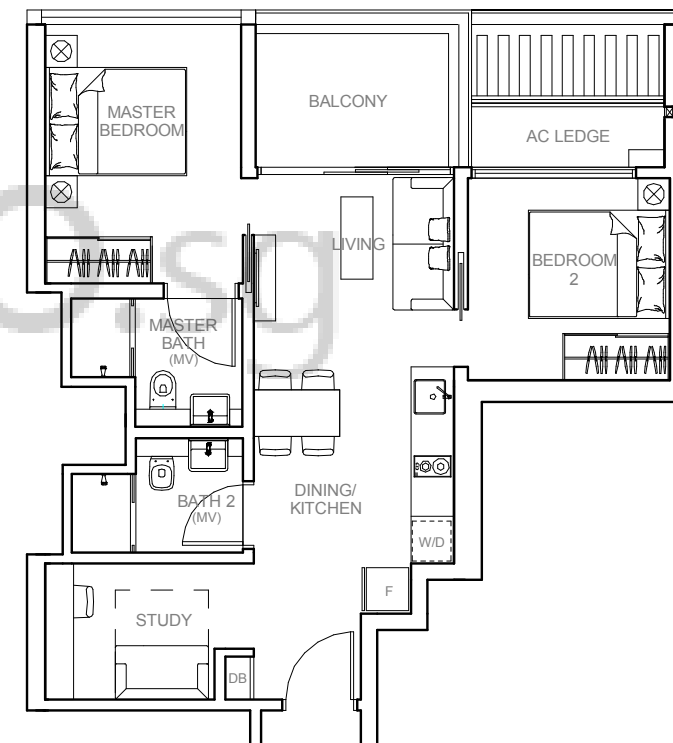
TYPE B7

68 SQM / 732 SQFT
INCLUSIVE OF 7 SQM BALCONY
& 3 SQM AC LEDGE

UNIT

BLOCK 13
#02-41 TO #04-41

BLOCK 15
#02-50 TO #04-50*



2-BEDROOM DUAL KEY

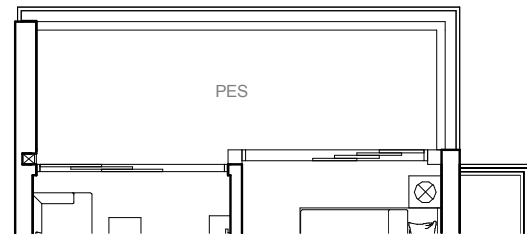
TYPE DK1-G

70 SQM / 753 SQFT
INCLUSIVE OF 13 SQM PES
& 4 SQM AC LEDGE

UNIT

BLOCK 13
#01-42

BLOCK 15
#01-49*



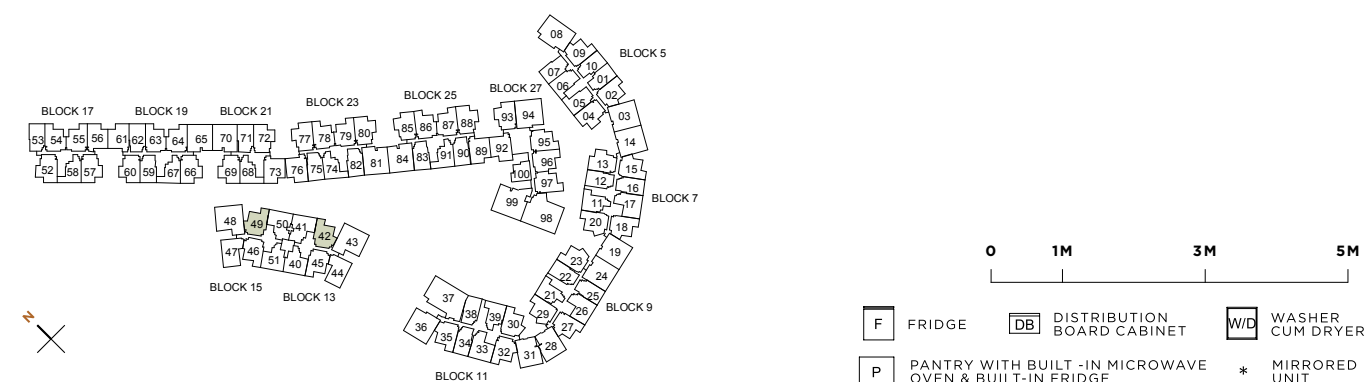
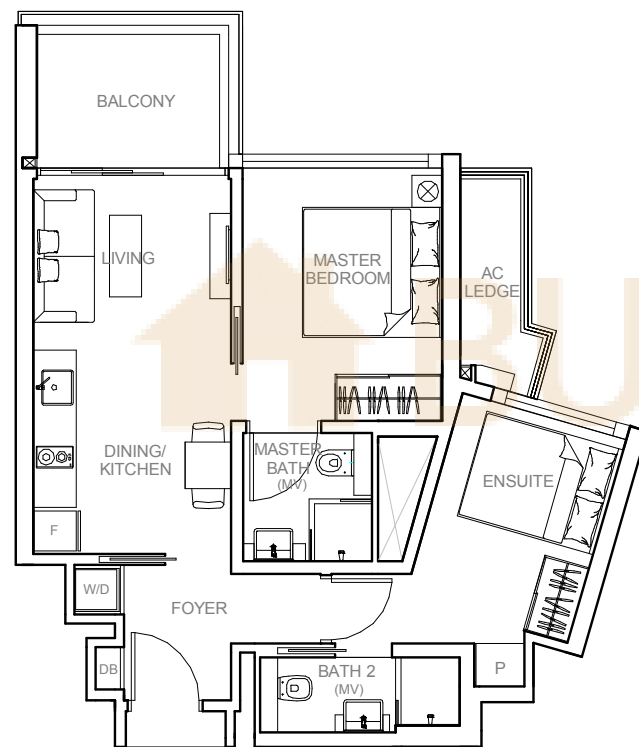
TYPE DK1

64 SQM / 689 SQFT
INCLUSIVE OF 7 SQM BALCONY
& 4 SQM AC LEDGE

UNIT

BLOCK 13
#02-42 TO #04-42

BLOCK 15
#02-49 TO #04-49*



2-BEDROOM DUAL KEY

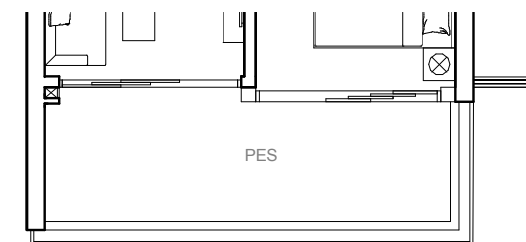
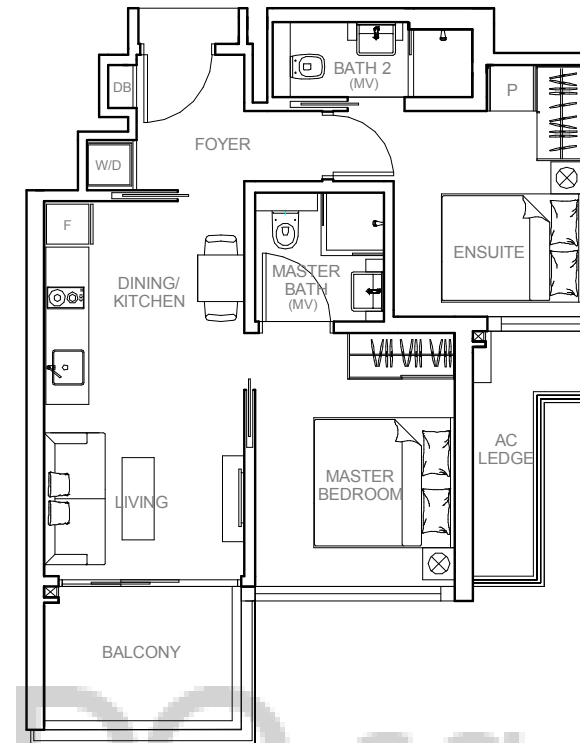
TYPE DK2

64 SQM / 689 SQFT
INCLUSIVE OF 7 SQM BALCONY
& 5 SQM AC LEDGE

UNIT

BLOCK 13
#02-45 TO #04-45

BLOCK 15
#02-46 TO #04-46*



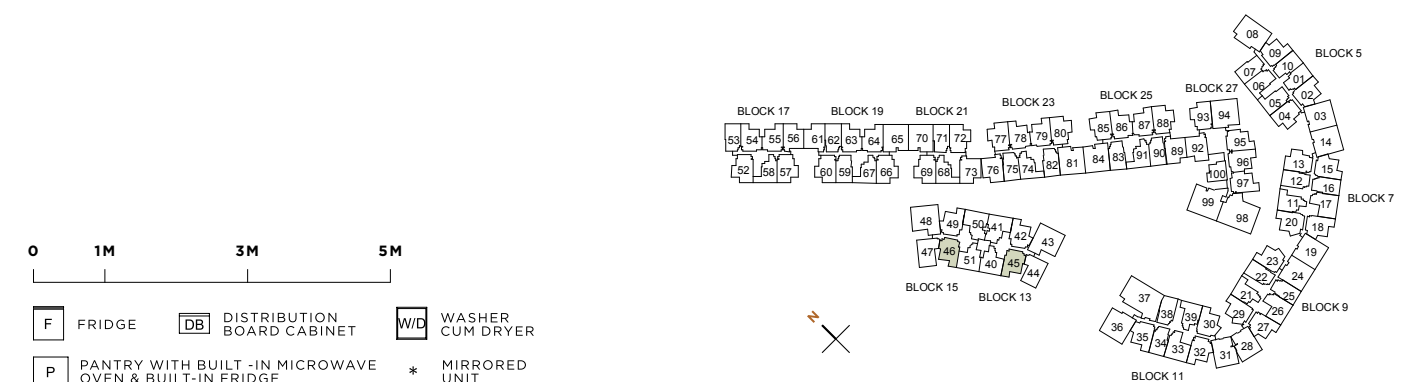
TYPE DK2-G

70 SQM / 753 SQFT
INCLUSIVE OF 13 SQM PES
& 5 SQM AC LEDGE

UNIT

BLOCK 13
#01-45

BLOCK 15
#01-46*



2-BEDROOM DUAL KEY

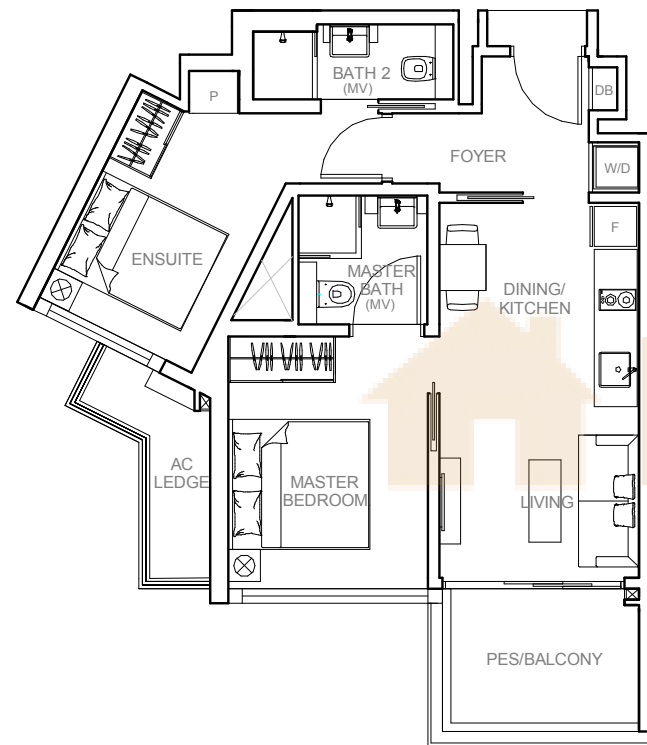
TYPE DK3

65 SQM / 700 SQFT
INCLUSIVE OF 7 SQM PES / BALCONY
& 4 SQM AC LEDGE

UNIT

BLOCK 9
#01-27 (PES)
#02-27 TO #04-27

BLOCK 11
#01-32 (PES)*
#02-32 TO #04-32*



2-BEDROOM DUAL KEY

TYPE DK4

65 SQM / 700 SQFT
INCLUSIVE OF 7 SQM PES / BALCONY
& 3 SQM AC LEDGE

UNIT

BLOCK 17
#02-52 (PES)*
#03-52*, #04-52*
#02-57 (PES)
#03-57, #04-57

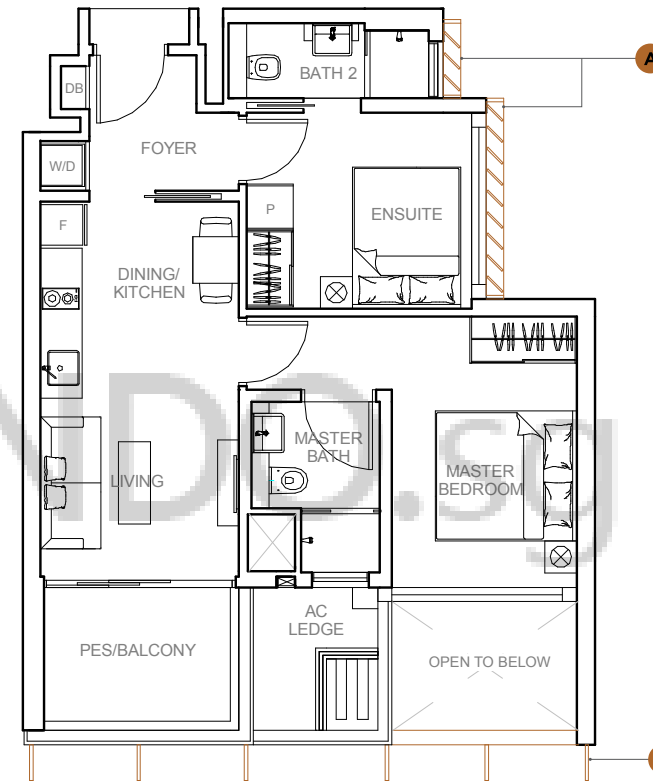
BLOCK 19
#02-60 (PES)*
#03-60 TO #06-60*
#02-66 (PES)
#03-66 TO #06-66

BLOCK 21
#01-69 (PES)*
#02-69 TO #07-69*
#01-72 (PES)*
#02-72 TO #07-72*

BLOCK 23
#01-77 (PES)
#02-77 TO #06-77
#01-80 (PES)*
#02-80 TO #06-80*

BLOCK 25
#01-85 (PES)
#02-85 TO #06-85
#01-88 (PES)*
#02-88 TO #06-88*

BLOCK 27
#01-93 (PES)
#02-93 TO #06-93



SCREENING



BLOCK 21
#07-69*

SCREENING

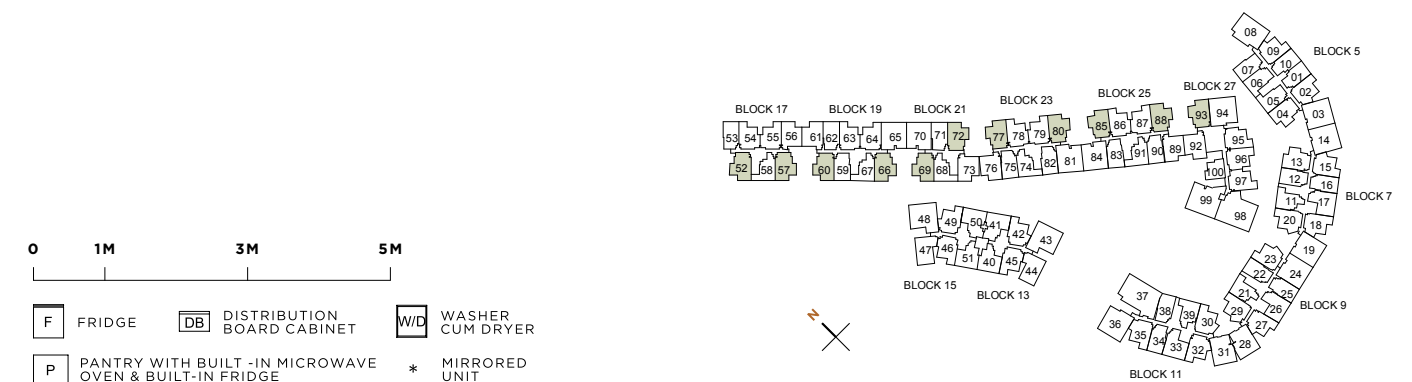
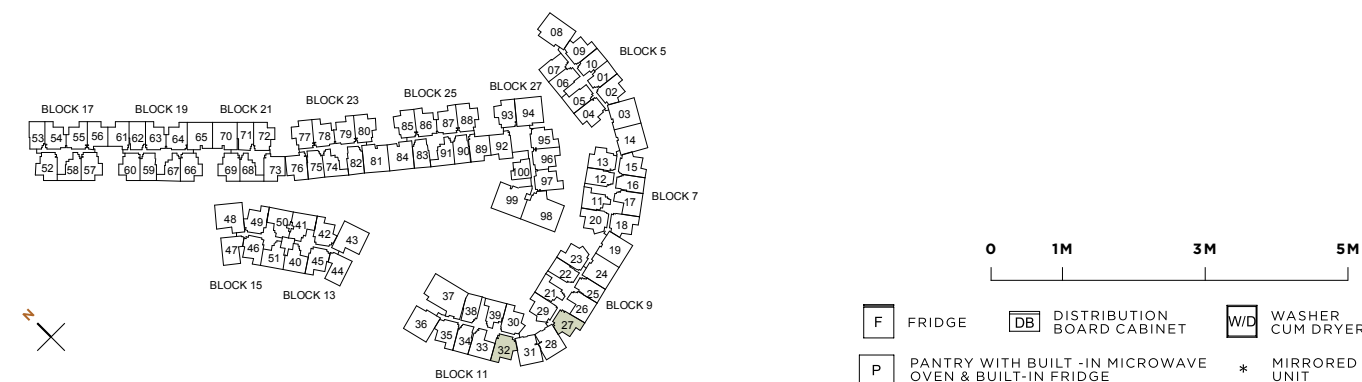


BLOCK 21
#07-69*
#07-72*

BLOCK 23
#06-77
#06-80*

BLOCK 25
#06-85
#06-88*

BLOCK 27
#06-93



2-BEDROOM DUAL KEY

TYPE DK4a

65 SQM / 700 SQFT
INCLUSIVE OF 7 SQM PES / BALCONY
& 3 SQM AC LEDGE

UNIT

BLOCK 5
#01-04 (PES)
#02-04 TO #05-04

BLOCK 7
#01-13 (PES)*
#02-13 TO #04-13*

TYPE DK5

65 SQM / 700 SQFT
INCLUSIVE OF 7 SQM PES / BALCONY
& 4 SQM AC LEDGE

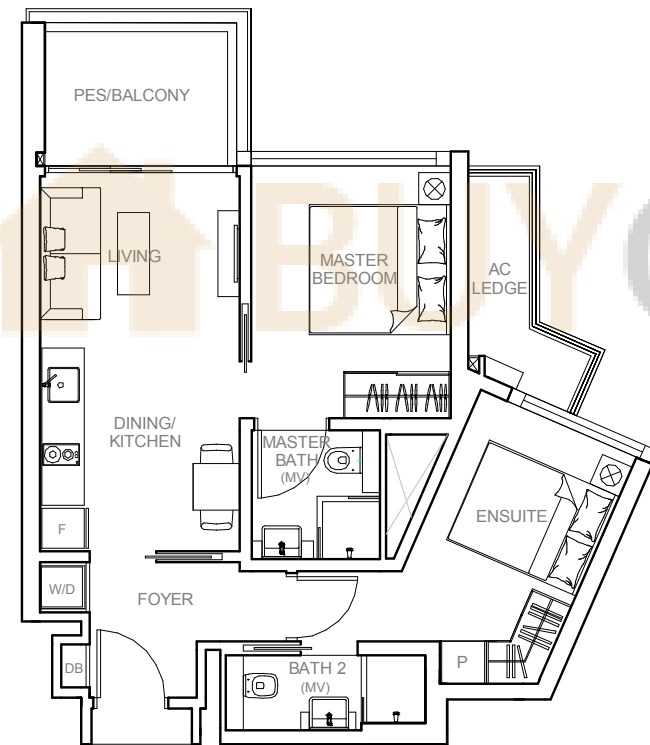
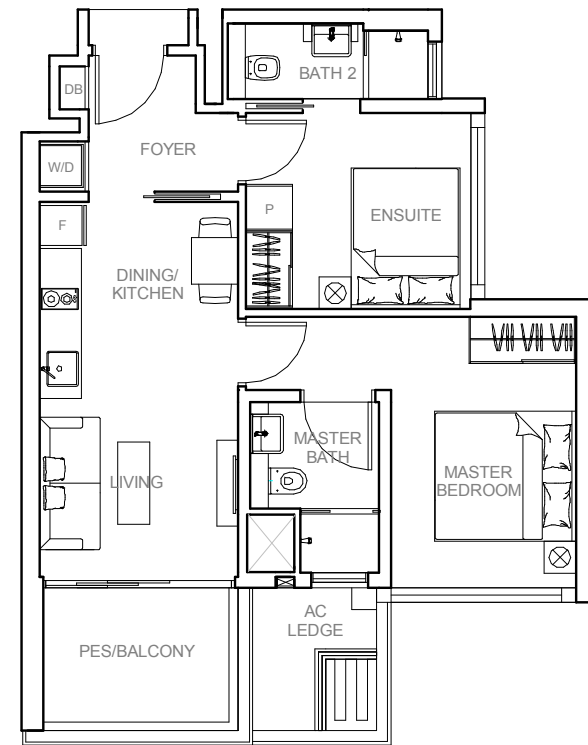
UNIT

BLOCK 5
#01-02 (PES)
#02-02 TO #05-02

BLOCK 7
#01-15 (PES)*
#02-15 TO #04-15*
#01-18 (PES)
#02-18 TO #04-18
#01-20 (PES)*
#02-20 TO #04-20*

BLOCK 9
#01-23 (PES)
#02-23 TO #04-23
#01-29 (PES)*
#02-29 TO #04-29*

BLOCK 11
#01-30 (PES)
#02-30 TO #04-30



2-BEDROOM DUAL KEY

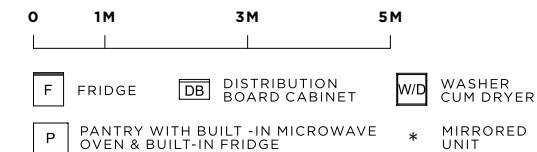
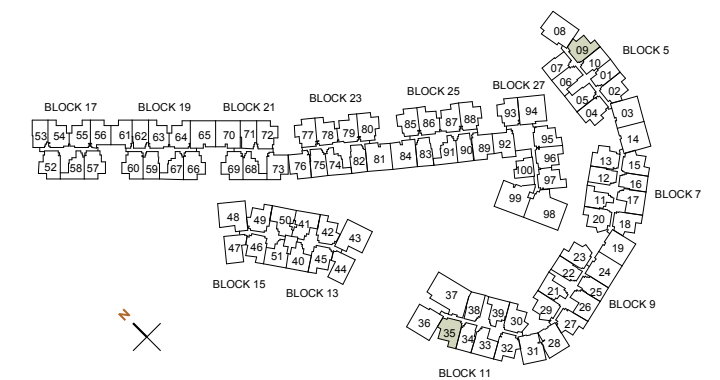
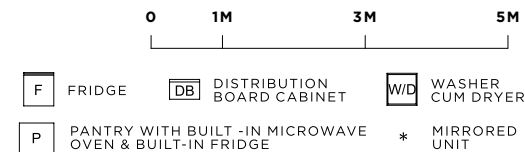
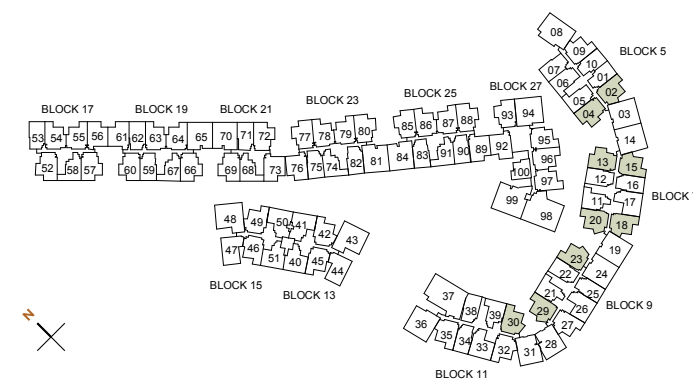
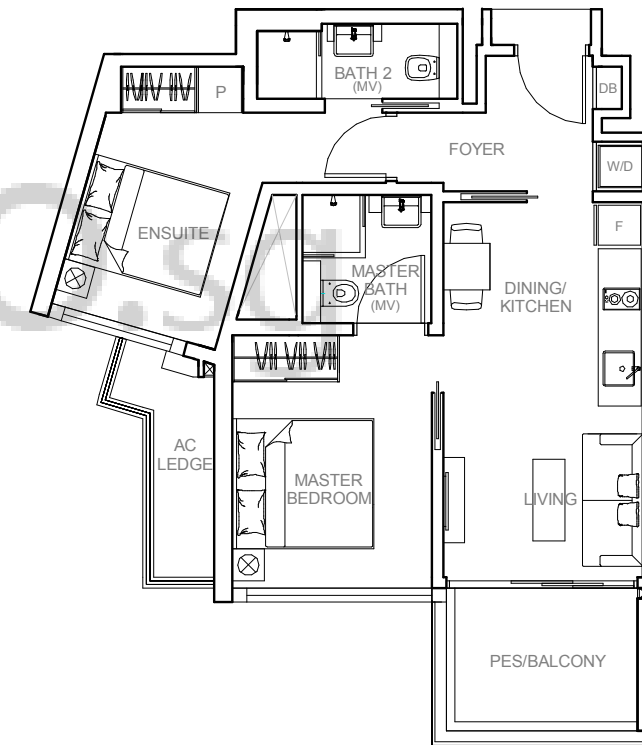
TYPE DK6

65 SQM / 700 SQFT
INCLUSIVE OF 7 SQM PES / BALCONY
& 4 SQM AC LEDGE

UNIT

BLOCK 5
#01-09 (PES)*
#02-09 TO #05-09*

BLOCK 11
#01-35 (PES)
#02-35 TO #04-35



2-BEDROOM DUAL KEY

TYPE DK7

65 SQM / 700 SQFT
INCLUSIVE OF 7 SQM PES / BALCONY
& 3 SQM AC LEDGE

UNIT

BLOCK 17
#01-56 (PES)*
#02-56 TO #04-56*

BLOCK 19
#01-61 (PES)
#02-61 TO #06-61

BLOCK 21
#01-73 (PES)
#02-73 TO #07-73

BLOCK 23
#01-76 (PES)*
#02-76 TO #06-76*

BLOCK 25
#01-89 (PES)
#02-89 TO #06-89

BLOCK 27
#01-92 (PES)*
#02-92 TO #06-92*

SCREENING

A

BLOCK 21
#07-73

BLOCK 23
#06-76*

BLOCK 25
#06-89

WALL

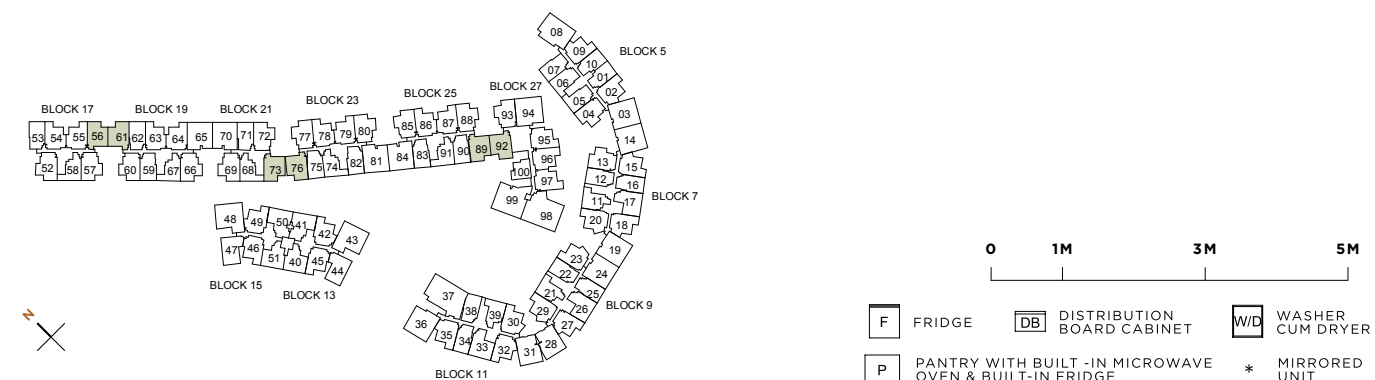
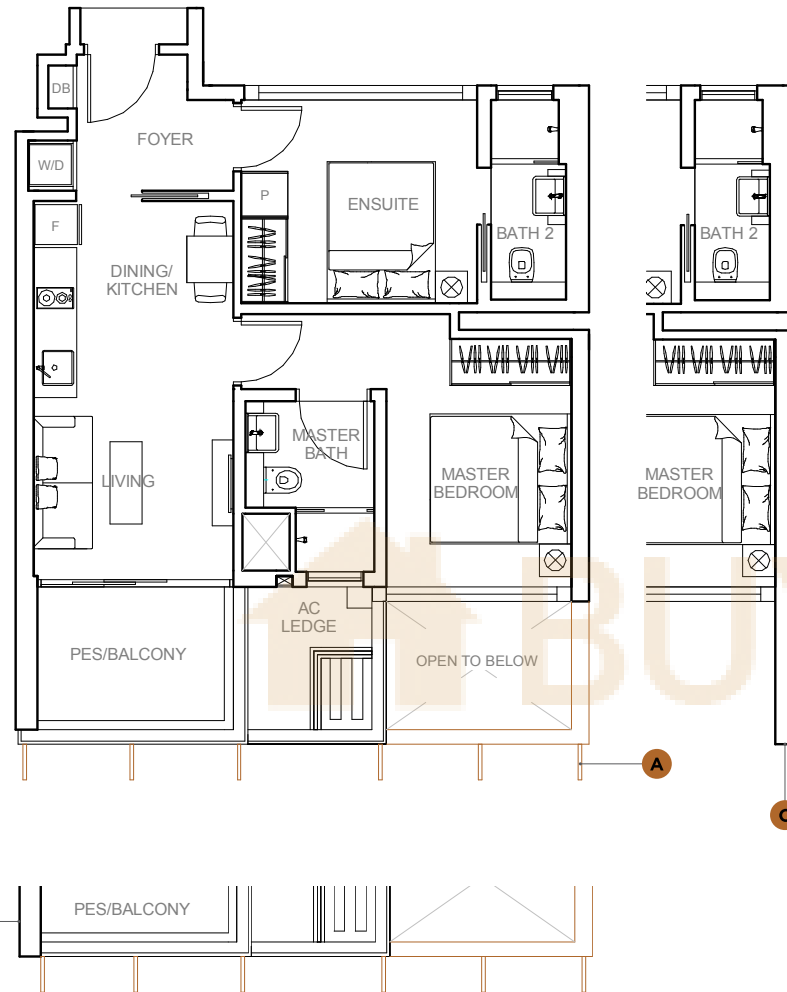
B

BLOCK 27
#06-92*

WALL

C

BLOCK 19
#05-61
#06-61



All plans are subjected to amendments as may be approved by the relevant authorities. Floor areas are approximate measurements and are subjected to final survey. BP Approval No. A0712-01131-2013-BP01 dated 09/10/2014

2-BEDROOM DUAL KEY

TYPE DK8

66 SQM / 710 SQFT
INCLUSIVE OF 7 SQM PES / BALCONY
& 5 SQM AC LEDGE

UNIT

BLOCK 17
#01-54 (PES)
#02-54 TO #04-54
#01-55 (PES)*
#02-55 TO #04-55*

BLOCK 19
#01-63 (PES)
#02-63 TO #06-63
#01-64 (PES)*
#02-64 TO #06-64*

BLOCK 23
#01-78 (PES)
#02-78 TO #06-78
#01-79 (PES)*
#02-79 TO #06-79*

BLOCK 25
#01-86 (PES)
#02-86 TO #06-86
#01-87 (PES)*
#02-87 TO #06-87*

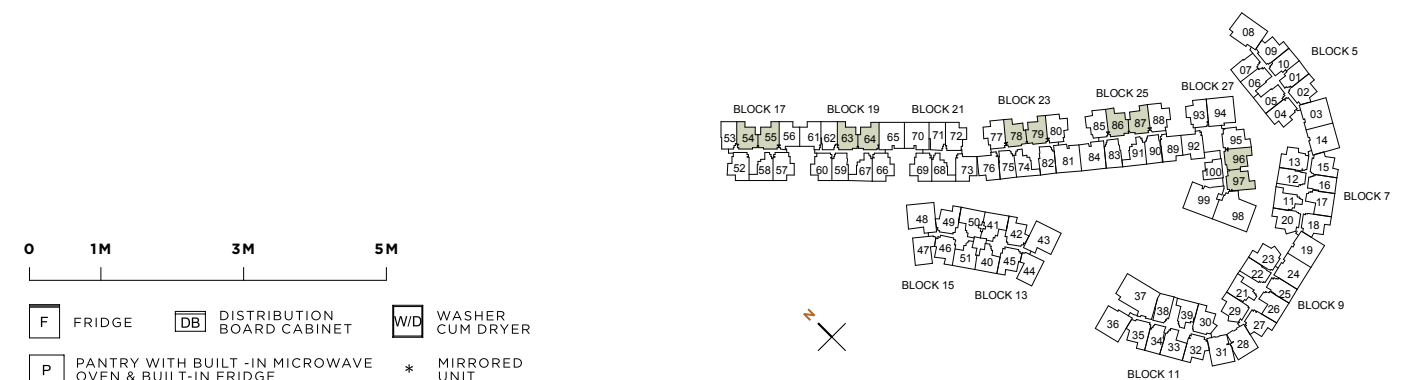
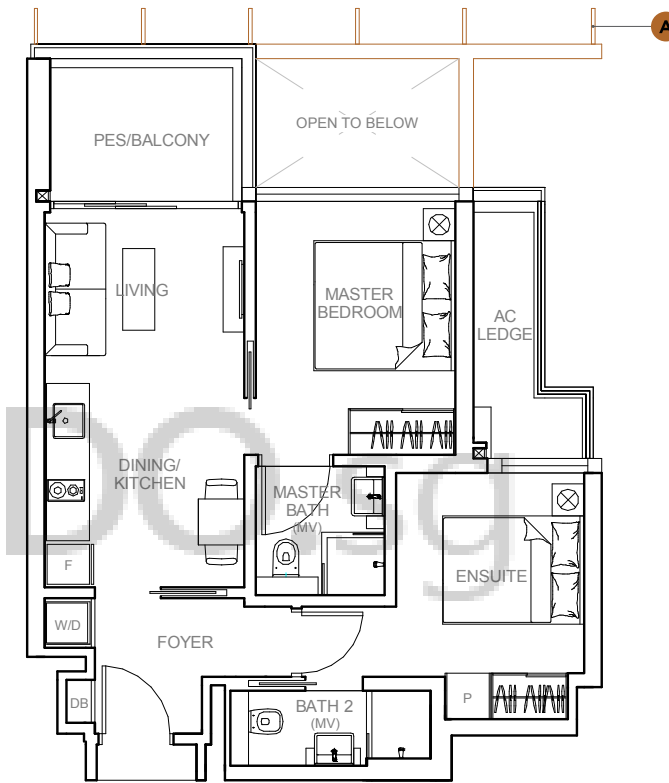
BLOCK 27
#01-96 (PES)
#02-96 TO #06-96
#01-97 (PES)*
#02-97 TO #06-97*

SCREENING

A

BLOCK 23
#06-78
#06-79*

BLOCK 25
#06-86
#06-87*



All plans are subjected to amendments as may be approved by the relevant authorities. Floor areas are approximate measurements and are subjected to final survey. BP Approval No. A0712-01131-2013-BP01 dated 09/10/2014

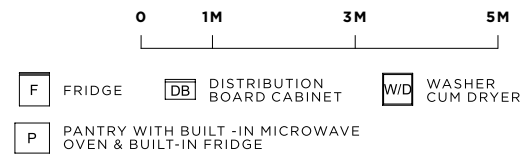
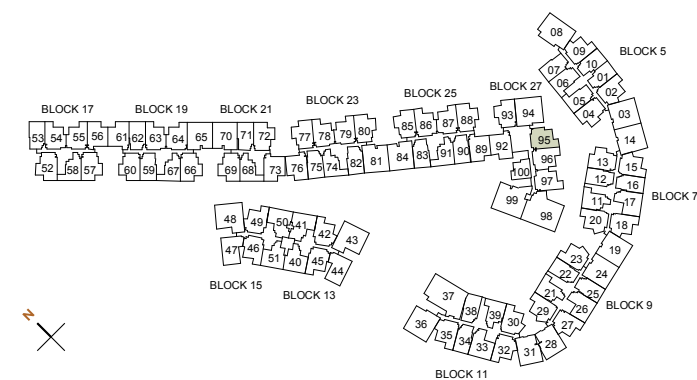
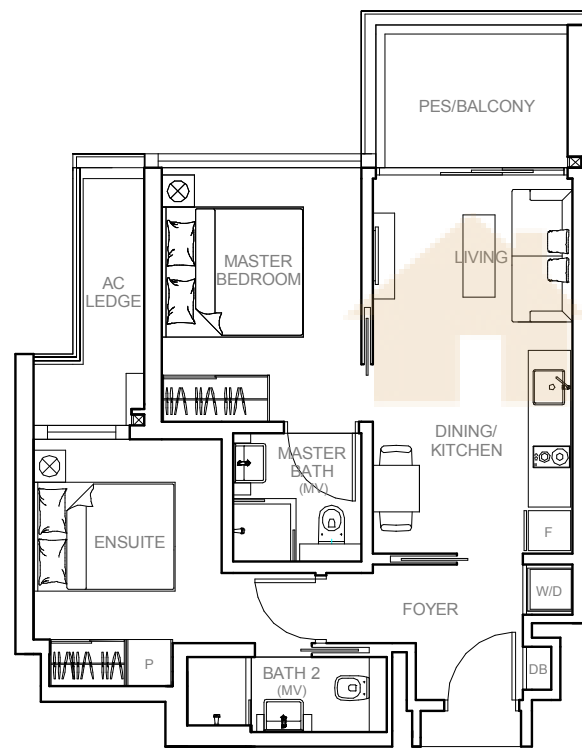
2-BEDROOM DUAL KEY

TYPE DK8a

66 SQM / 710 SQFT
INCLUSIVE OF 7 SQM PES / BALCONY
& 5 SQM AC LEDGE

UNIT

BLOCK 27
#01-95 (PES)
#02-95 TO #06-95



All plans are subjected to amendments as may be approved by the relevant authorities. Floor areas are approximate measurements and are subjected to final survey. BP Approval No. A0712-01131-2013-BP01 dated 09/10/2014

3-BEDROOM

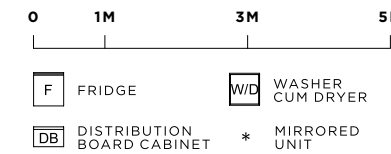
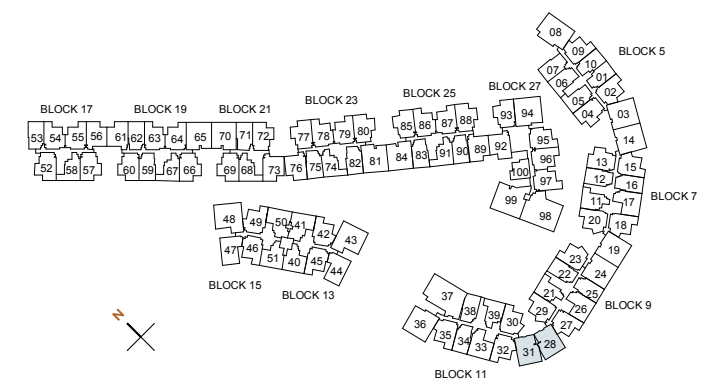
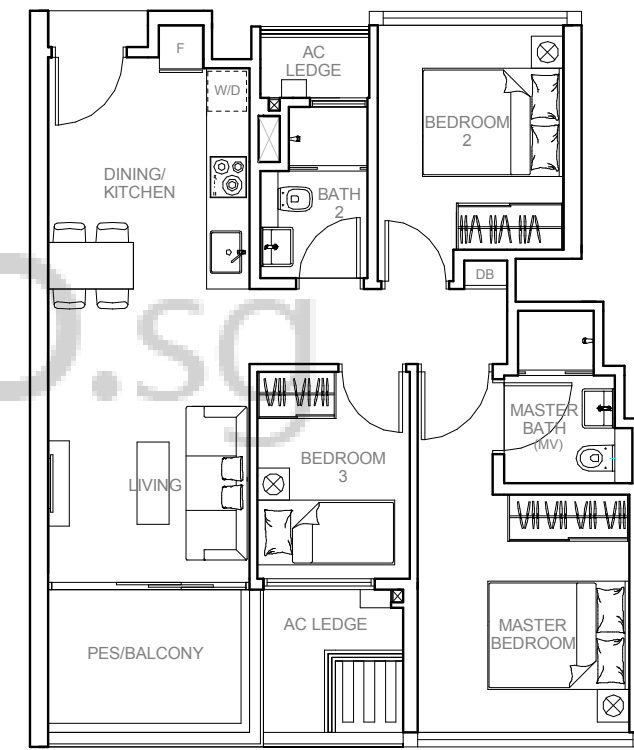
TYPE C1

79 SQM / 850 SQFT
INCLUSIVE OF 7 SQM PES / BALCONY
& 5 SQM AC LEDGE

UNIT

BLOCK 9
#01-28 (PES)*
#02-28 TO #04-28*

BLOCK 11
#01-31 (PES)
#02-31 TO #04-31



All plans are subjected to amendments as may be approved by the relevant authorities. Floor areas are approximate measurements and are subjected to final survey. BP Approval No. A0712-01131-2013-BP01 dated 09/10/2014

3-BEDROOM

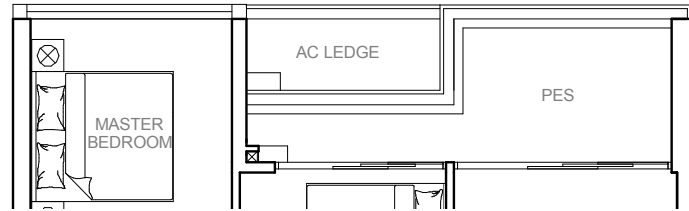
TYPE C2-G

91 SQM / 980 SQFT
INCLUSIVE OF 11 SQM PES
& 5 SQM AC LEDGE

UNIT

BLOCK 19 **BLOCK 23**
#01-65* #01-81

BLOCK 21 **BLOCK 25**
#01-70 #01-84*



TYPE C2

89 SQM / 958 SQFT
INCLUSIVE OF 8 SQM BALCONY
& 6 SQM AC LEDGE

UNIT

BLOCK 19
#02-65 TO #06-65*

BLOCK 21
#02-70 TO #07-70

BLOCK 23
#02-81 TO #06-81

BLOCK 25
#02-84 TO #06-84*

SCREENING

A

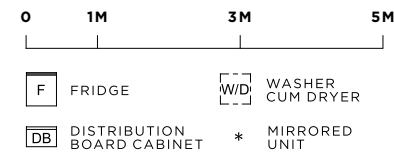
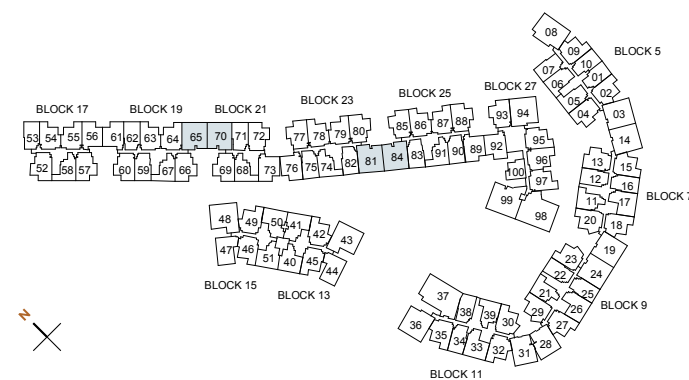
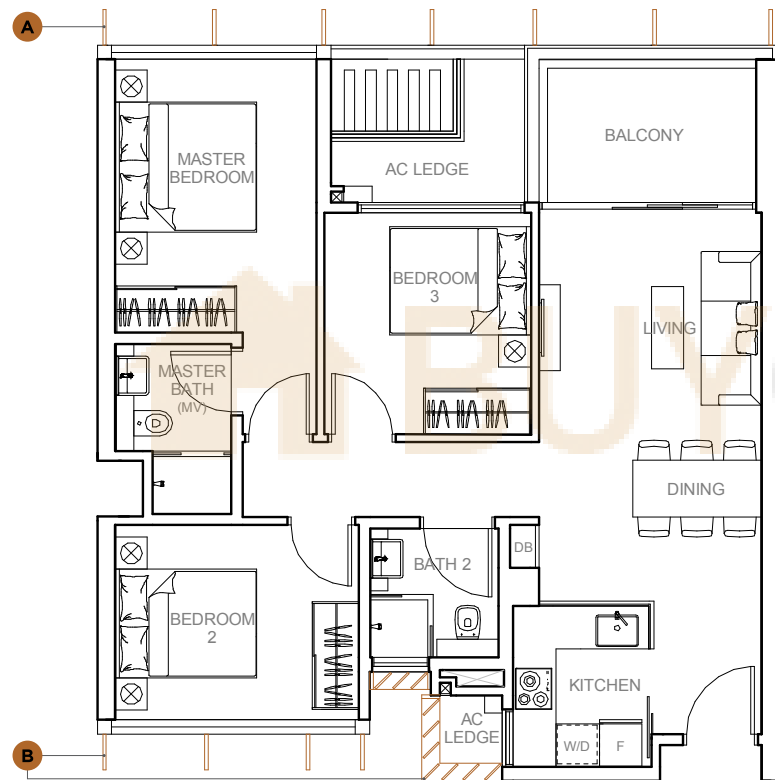
SCREENING

B

BLOCK 21 **BLOCK 21**
#07-70 #07-70

BLOCK 23
#06-81

BLOCK 25
#06-84*



3-BEDROOM + UTILITY

TYPE C3

94 SQM / 1012 SQFT
INCLUSIVE OF 8 SQM BALCONY
& 6 SQM AC LEDGE

UNIT

BLOCK 5
#02-03 TO #05-03*

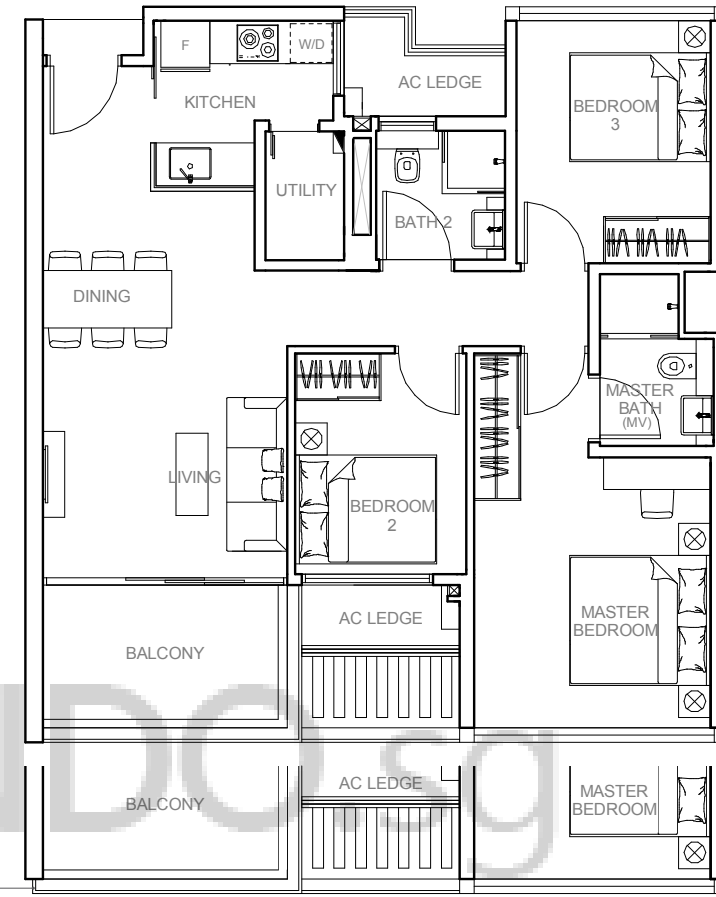
BLOCK 7
#02-14 TO #04-14
#02-19 TO #04-19*

BLOCK 9
#02-24 TO #04-24

RAILING

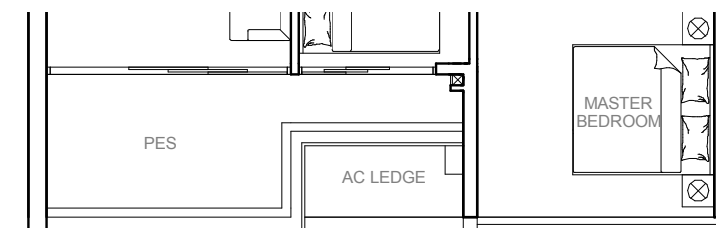
A

BLOCK 9
#02-24 TO #04-24



TYPE C3

A



TYPE C3-G

B

TYPE C3-G

97 SQM / 1044 SQFT
INCLUSIVE OF 11 SQM PES
& 6 SQM AC LEDGE

UNIT

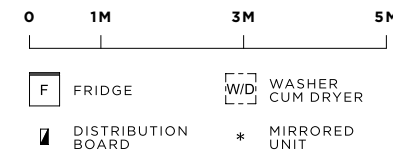
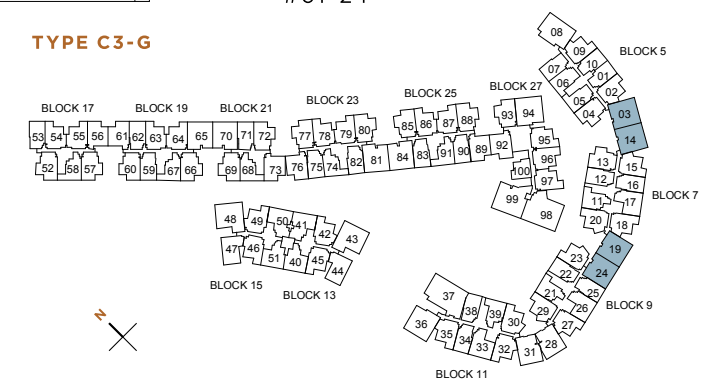
BLOCK 5 **BLOCK 9**
#01-03* #01-24

BLOCK 7
#01-14
#01-19*

RAILING

B

BLOCK 9
#01-24



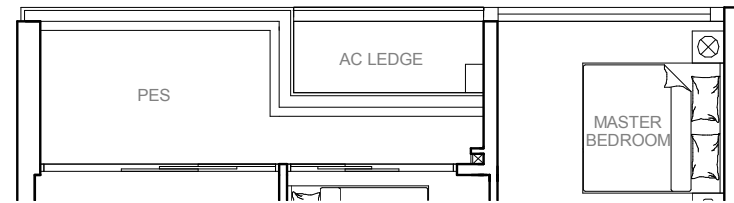
3-BEDROOM + UTILITY

TYPE C4-G

99 SQM / 1066 SQFT
INCLUSIVE OF 11 SQM PES
& 7 SQM AC LEDGE

UNIT

BLOCK 27
#01-94



TYPE C4

95 SQM / 1023 SQFT
INCLUSIVE OF 8 SQM BALCONY
& 6 SQM AC LEDGE

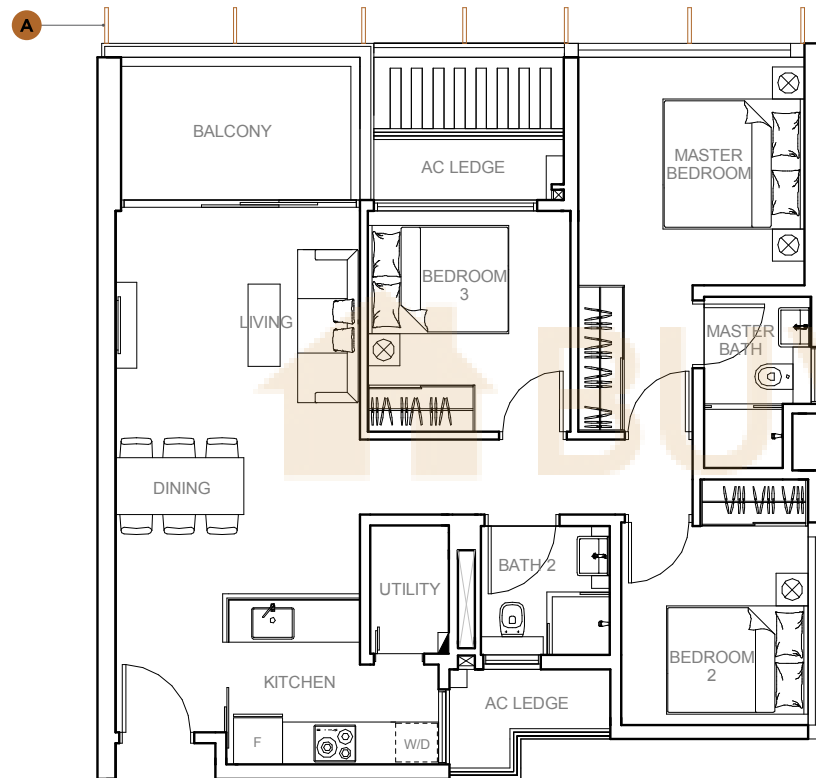
UNIT

BLOCK 27
#02-94 TO #06-94

SCREENING

A

BLOCK 27
#06-94



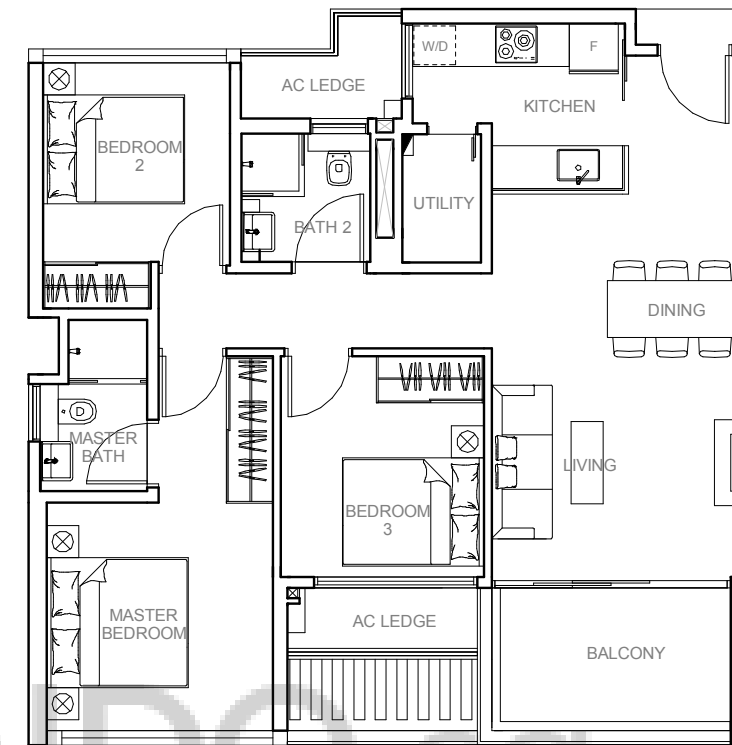
3-BEDROOM + UTILITY

TYPE C5

95 SQM / 1023 SQFT
INCLUSIVE OF 8 SQM BALCONY
& 6 SQM AC LEDGE

UNIT

BLOCK 11
#02-36 TO #04-36

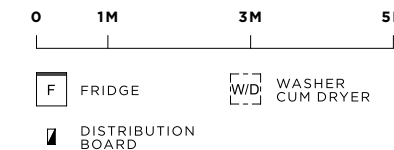
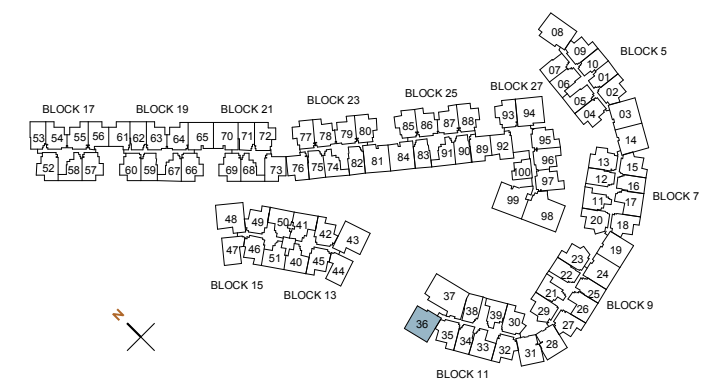
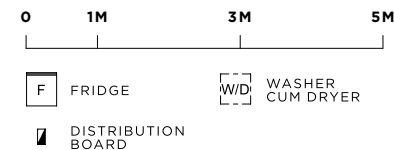
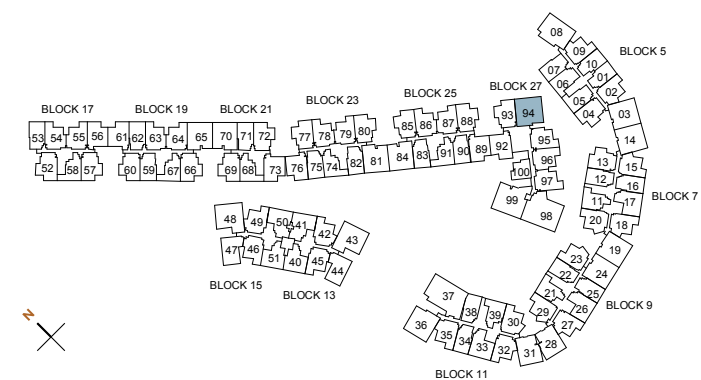
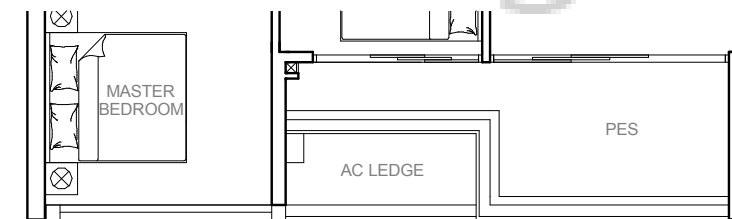


TYPE C5-G

98 SQM / 1055 SQFT
INCLUSIVE OF 11 SQM PES
& 6 SQM AC LEDGE

UNIT

BLOCK 11
#01-36



3-BEDROOM + UTILITY

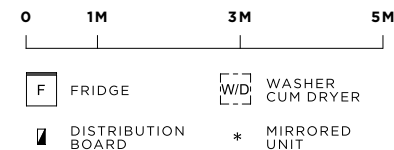
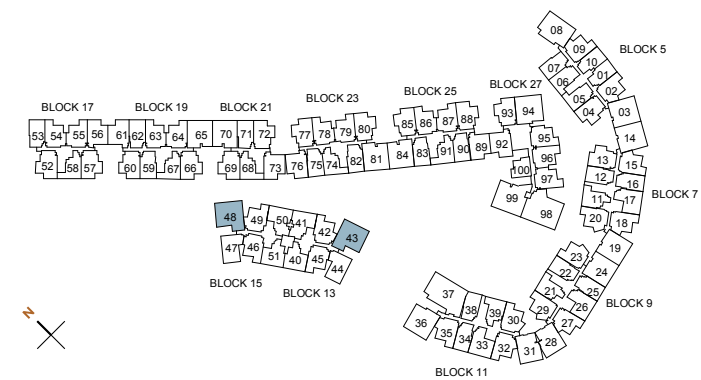
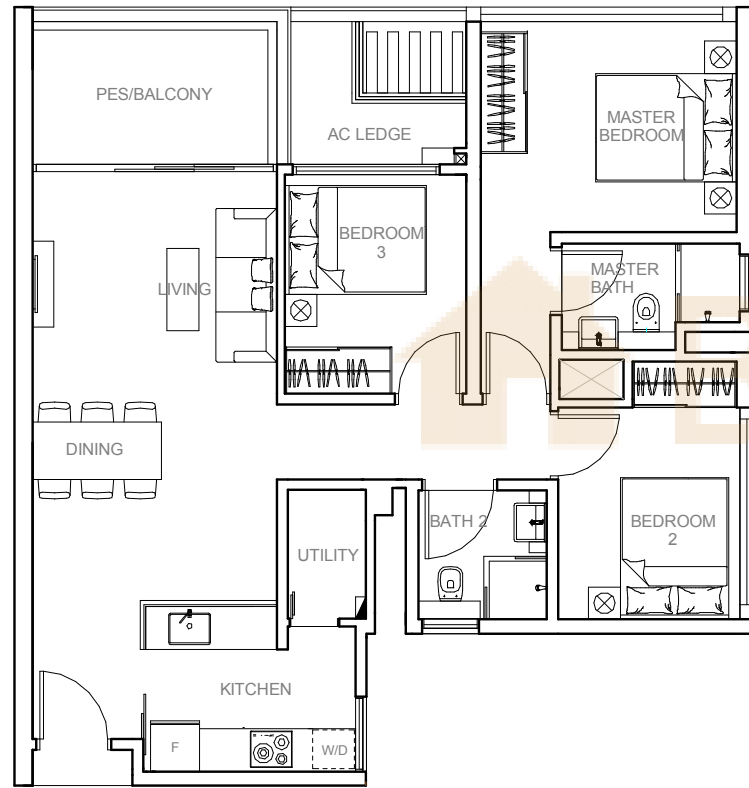
TYPE C6

95 SQM / 1023 SQFT
INCLUSIVE OF 8 SQM PES / BALCONY
& 4 SQM AC LEDGE

UNIT

BLOCK 13
#01-43 (PES)
#02-43 TO #04-43

BLOCK 15
#01-48 (PES)*
#02-48 TO #04-48*



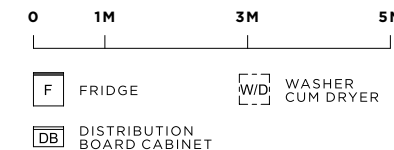
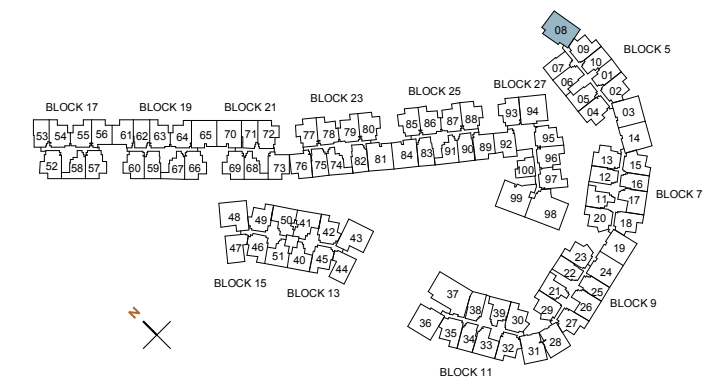
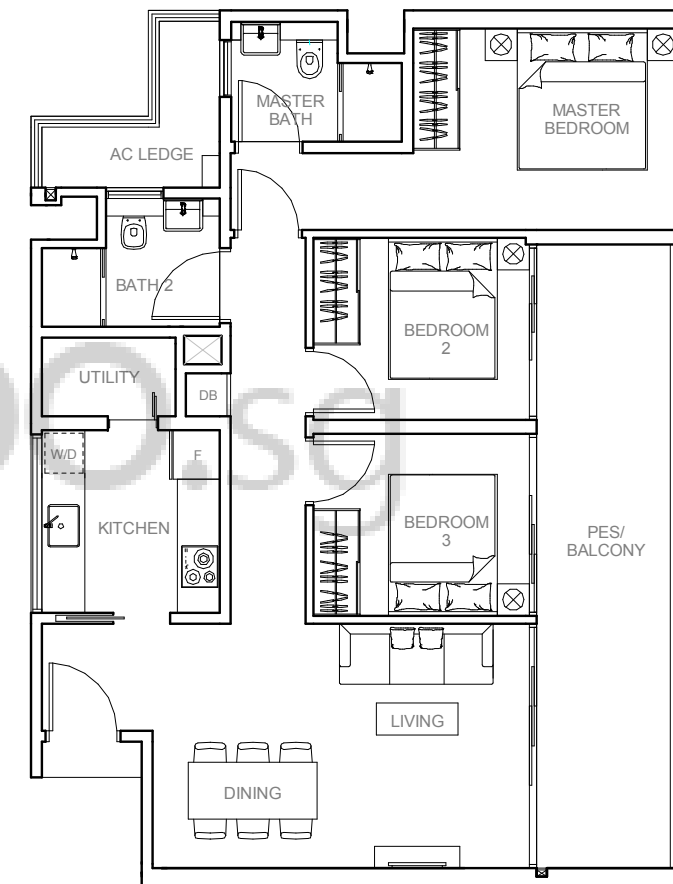
3-BEDROOM + UTILITY

TYPE C7

105 SQM / 1130 SQFT
INCLUSIVE OF 20 SQM PES / BALCONY
& 5 SQM AC LEDGE

UNIT

BLOCK 5
#01-08 (PES)
#02-08 TO #05-08



3-BEDROOM + UTILITY + PRIVATE LIFT

TYPE C8

122 SQM / 1313 SQFT
INCLUSIVE OF 19 SQM PES / BALCONY
& 6 SQM AC LEDGE

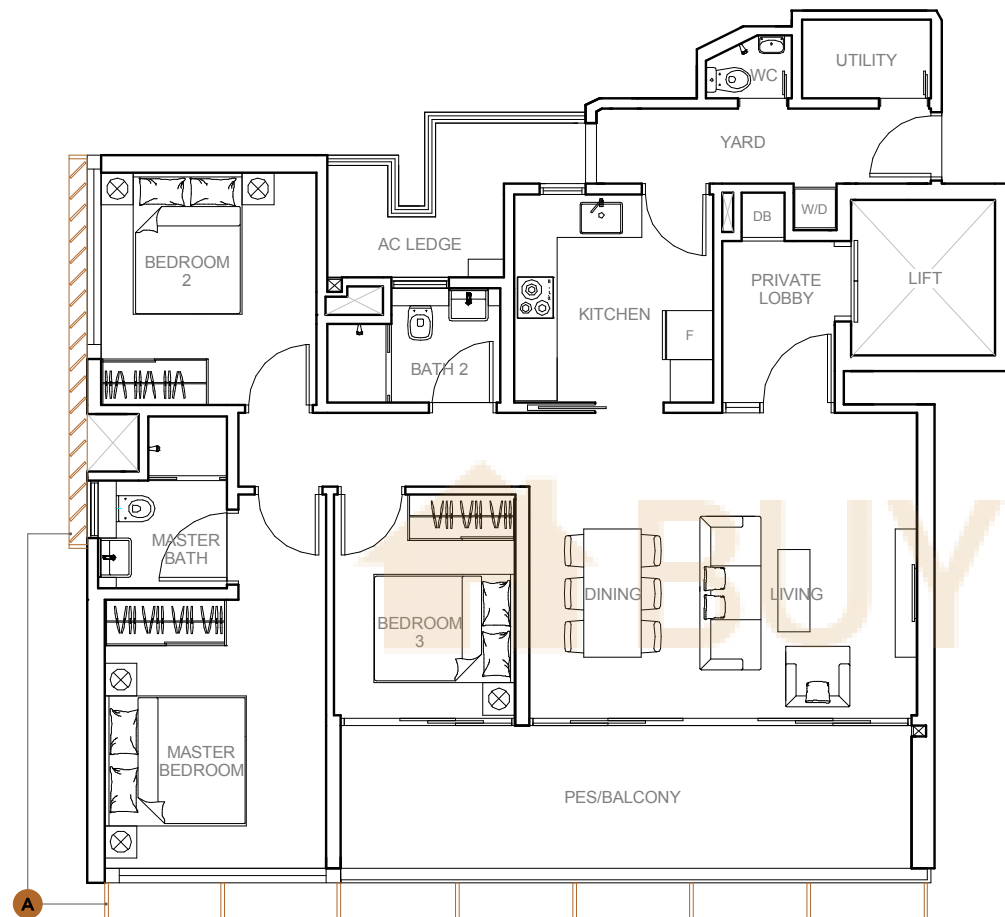
UNIT

BLOCK 27
#01-99 (PES)
#02-99 TO #06-99

SCREENING

A

BLOCK 27
#06-99



4-BEDROOM + UTILITY + PRIVATE LIFT

TYPE D1

143 SQM / 1539 SQFT
INCLUSIVE OF
20 SQM PES / BALCONY
& 4 SQM AC LEDGE

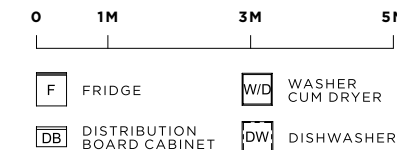
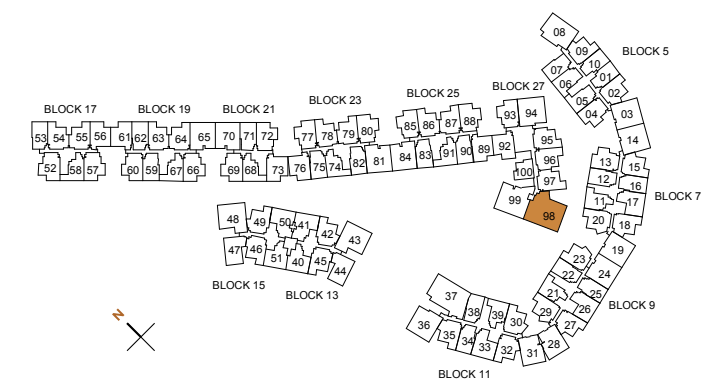
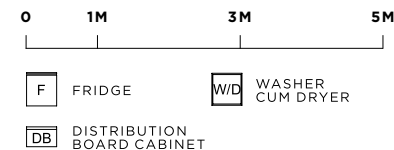
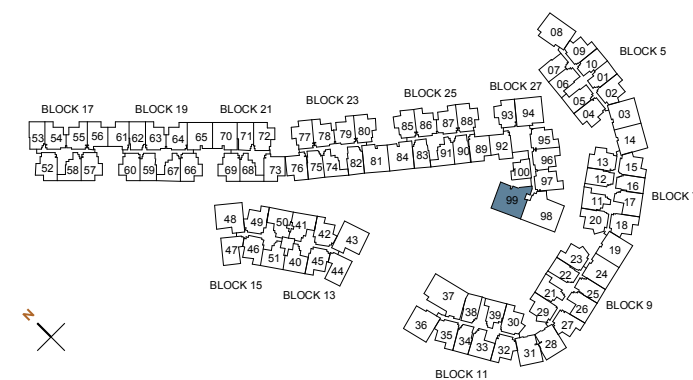
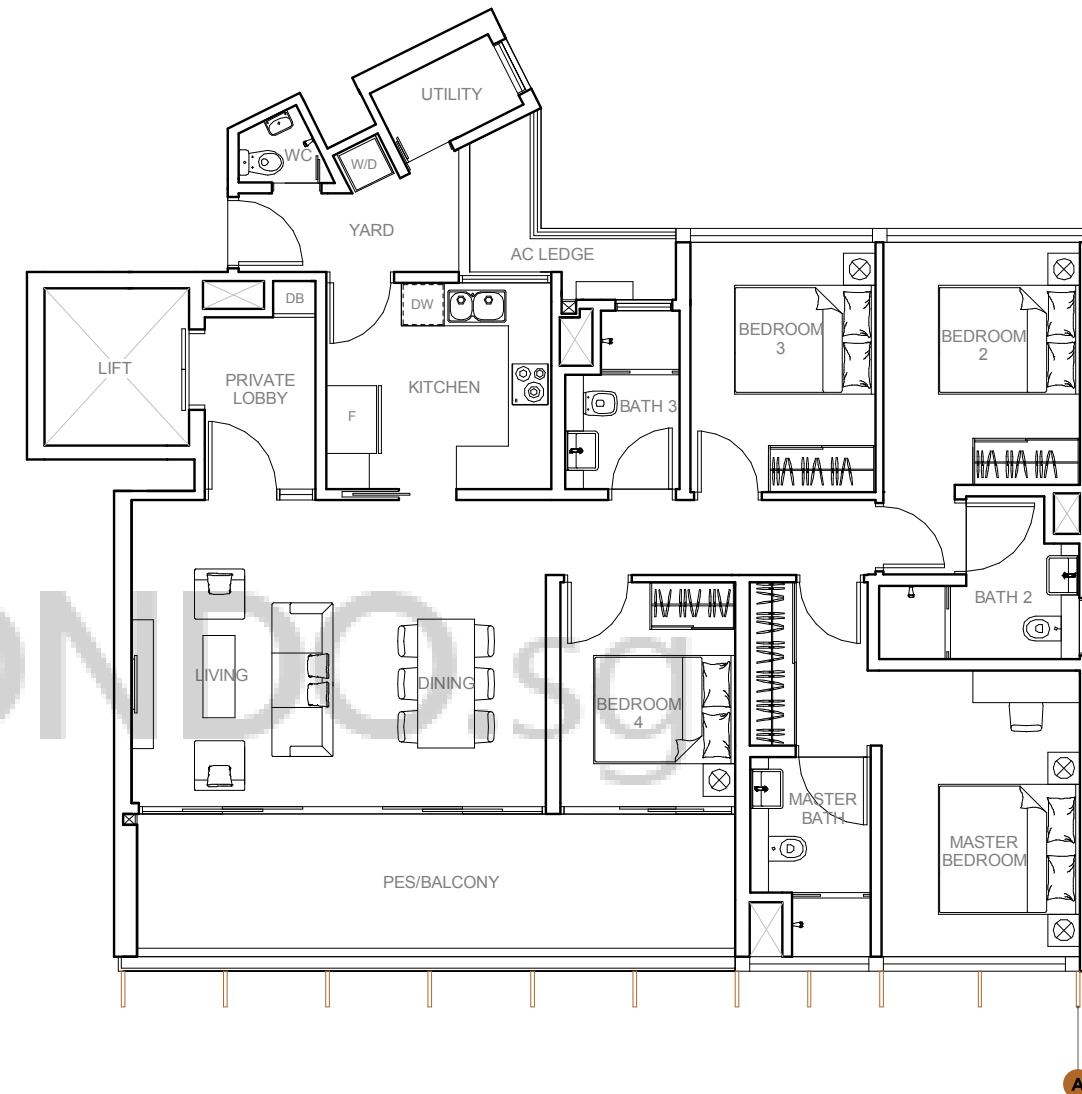
UNIT

BLOCK 27
#01-98 (PES)
#02-98 TO #06-98

SCREENING

A

BLOCK 27
#06-98



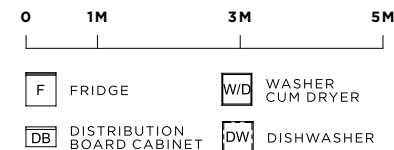
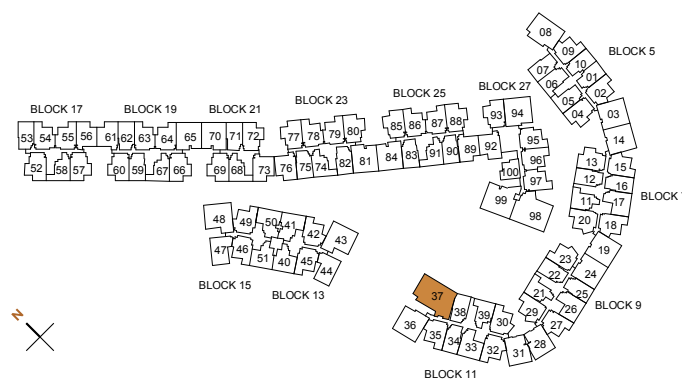
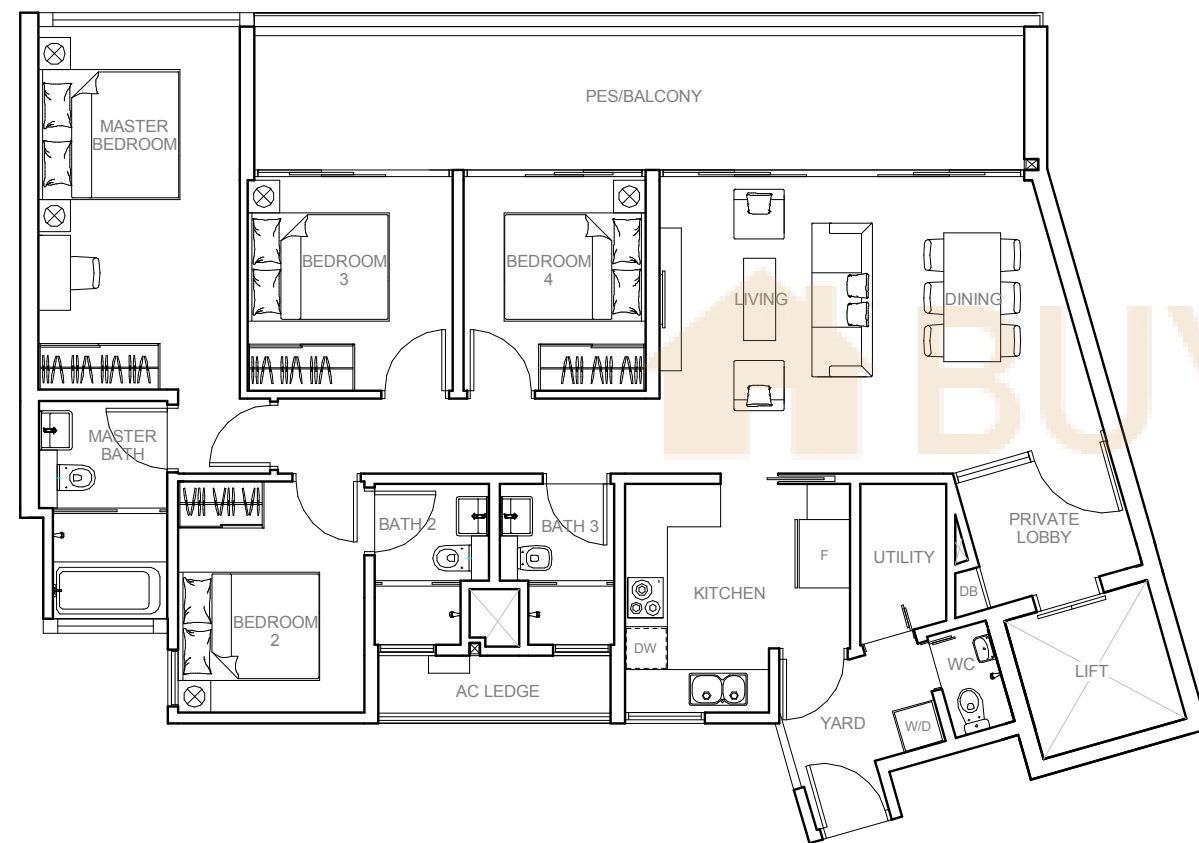
4-BEDROOM + UTILITY + PRIVATE LIFT

TYPE D2

143 SQM / 1539 SQFT
INCLUSIVE OF 25 SQM PES / BALCONY
& 4 SQM AC LEDGE

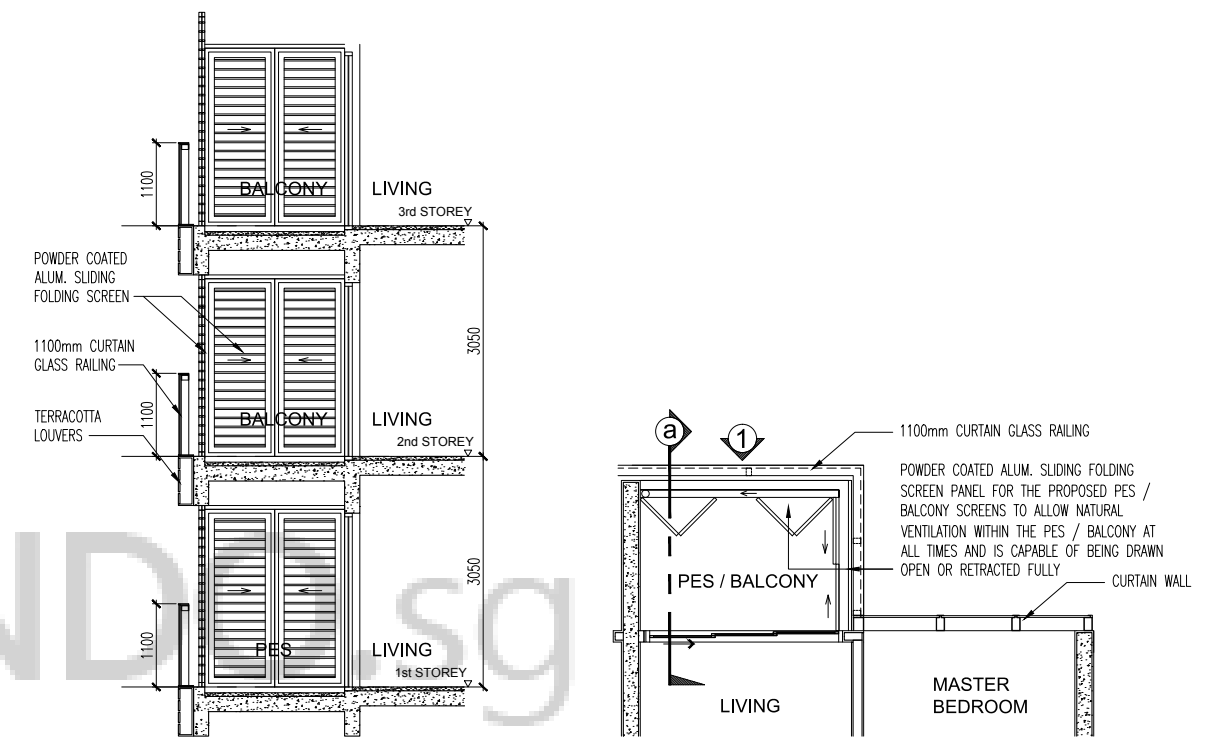
UNIT

BLOCK 11
#01-37 (PES)
#02-37 TO #04-37



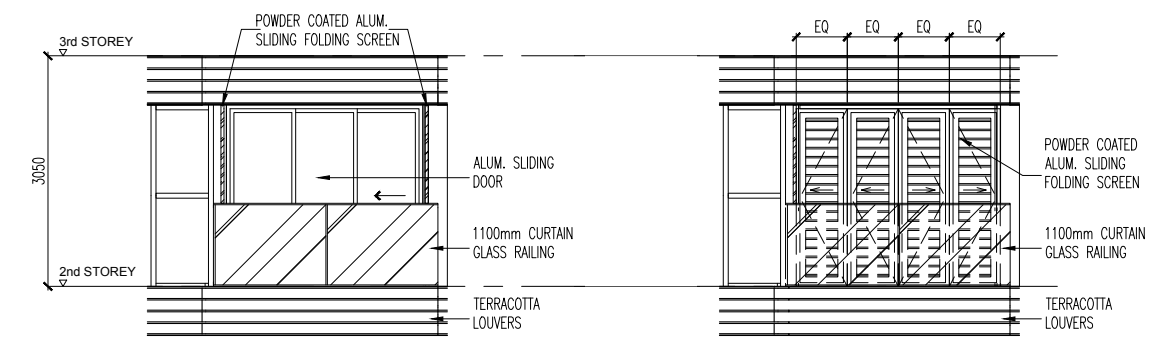
TYPICAL PES/BALCONY SCREEN DESIGN

* PES / BALCONIES CANNOT BE ENCLOSED UNLESS WITH APPROVED PES / BALCONY SCREENS



SECTIONAL VIEW

PLAN VIEW



ELEVATION, FULLY OPEN

ELEVATION, FULLY CLOSE

