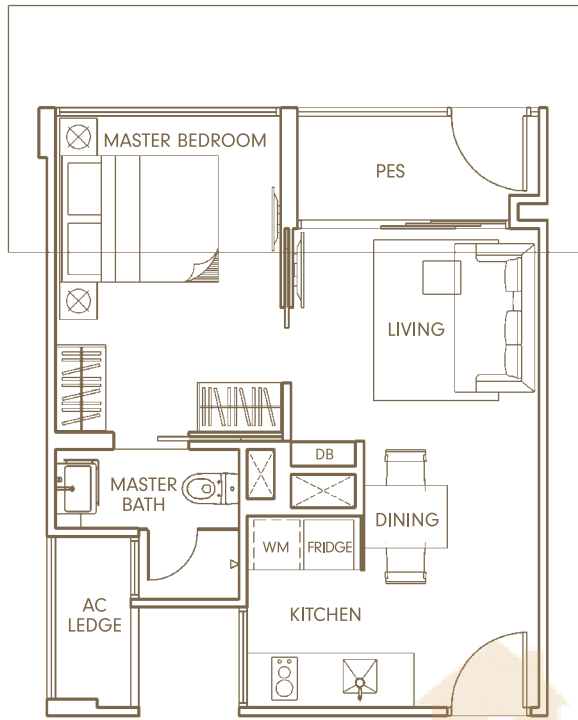


TYPE AG (1-Bedroom)

Unit #01-16, #01-17, #01-18, #01-19 *High Ceiling
 Area 431 sqft / 40 sqm
 (Inclusive of AC Ledge & PES)



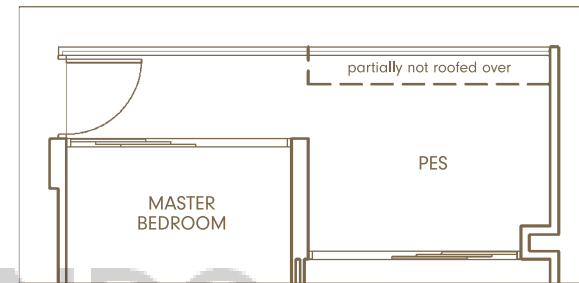
TYPE A2G (1-Bedroom)

Unit #01-04 & #01-05
 Area 441 sqft / 41 sqm
 (Inclusive of AC Ledge & PES)



TYPE A3G (1-Bedroom)

Unit #01-11
 Area 506 sqft / 47 sqm
 (Inclusive of AC Ledge & PES)



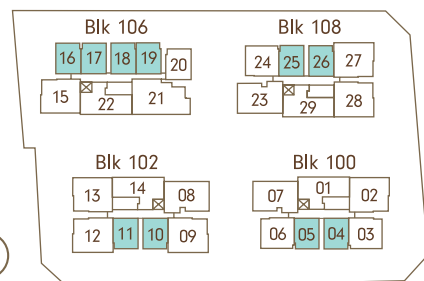
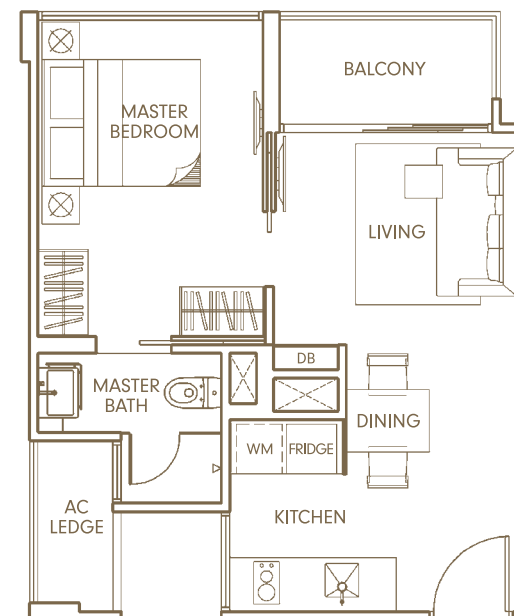
TYPE A1G (1-Bedroom)

Unit #01-25 & #01-26 *High Ceiling
 Area 484 sqft / 45 sqm
 (Inclusive of AC Ledge & PES)



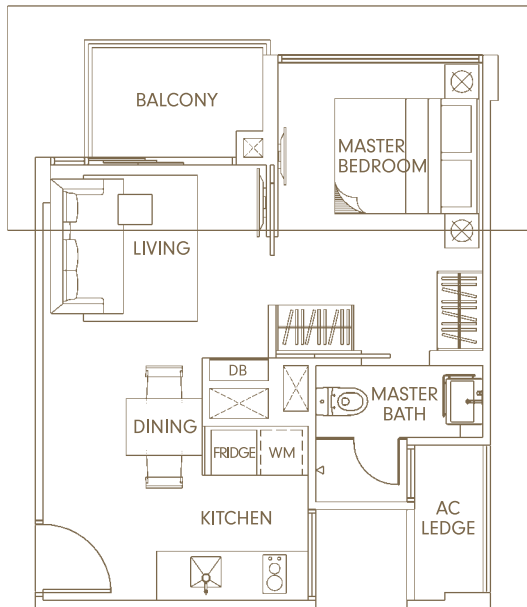
TYPE A (1-Bedroom)

Unit #02-04 to #04-04, #02-05 to #04-05, #02-10 to #04-10,
 #02-11 to #04-11, #02-16 to #04-16, #02-17 to #04-17,
 #02-18 to #04-18, #02-19 to #04-19, #02-25 to #04-25,
 #02-26 to #04-26
 Area 431 sqft / 40 sqm
 (Inclusive of AC Ledge & Balcony)



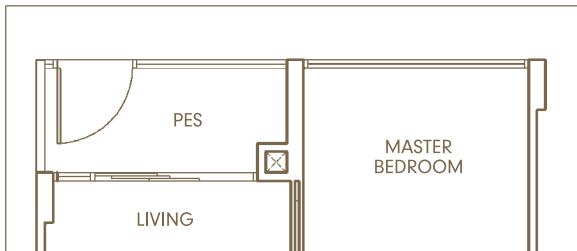
TYPE A1 (1-Bedroom)

Unit #02-20 to #04-20
 Area 431 sqft / 40 sqm
 (Inclusive of AC Ledge & Balcony)



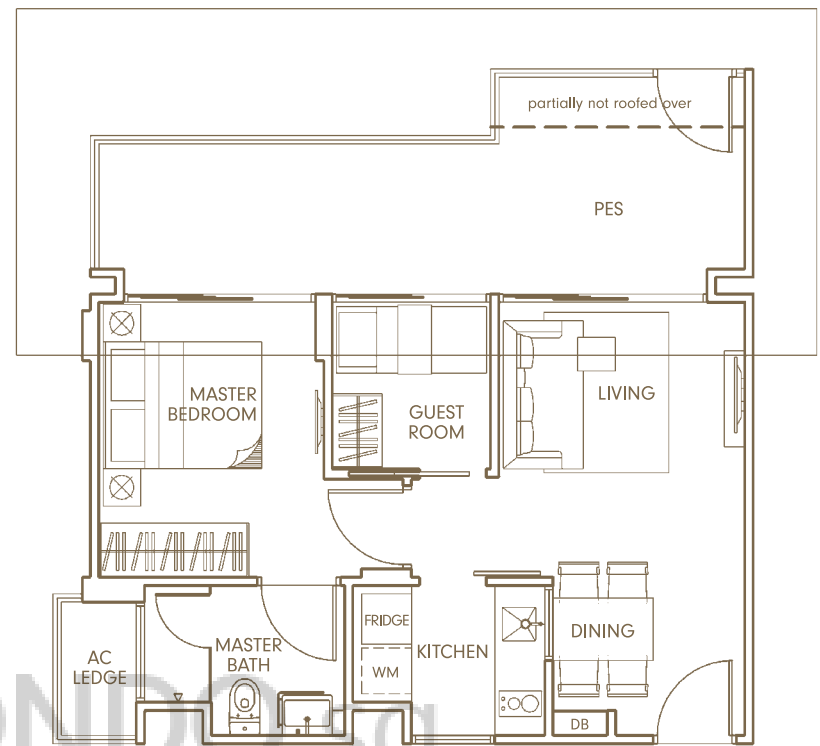
TYPE A4G (1-Bedroom)

Unit #01-20 *High Ceiling
 Area 431 sqft / 40 sqm
 (Inclusive of AC Ledge & PES)



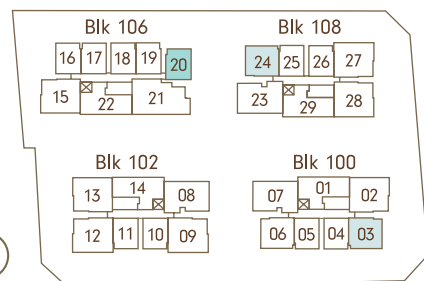
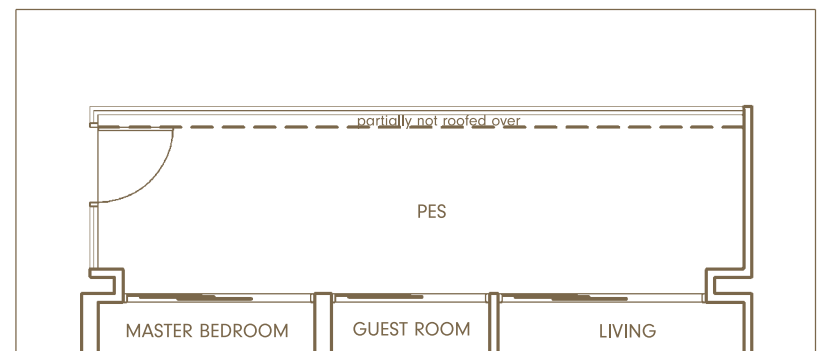
TYPE BG (1+Guest Room)

Unit #01-24 *High Ceiling
 Area 646 sqft / 60 sqm
 (Inclusive of AC Ledge & PES)



TYPE B1G (1+Guest Room)

Unit #01-03
 Area 646 sqft / 60 sqm
 (Inclusive of AC Ledge & PES)



TYPE B (1+Guest Room)

Unit #02-03 to #04-03, #02-06 to #04-06, #02-24 to #04-24

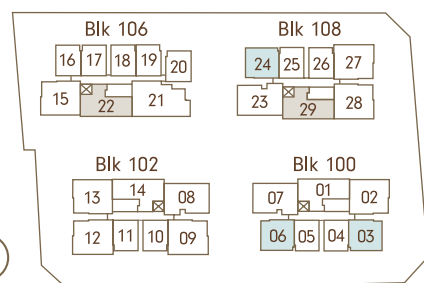
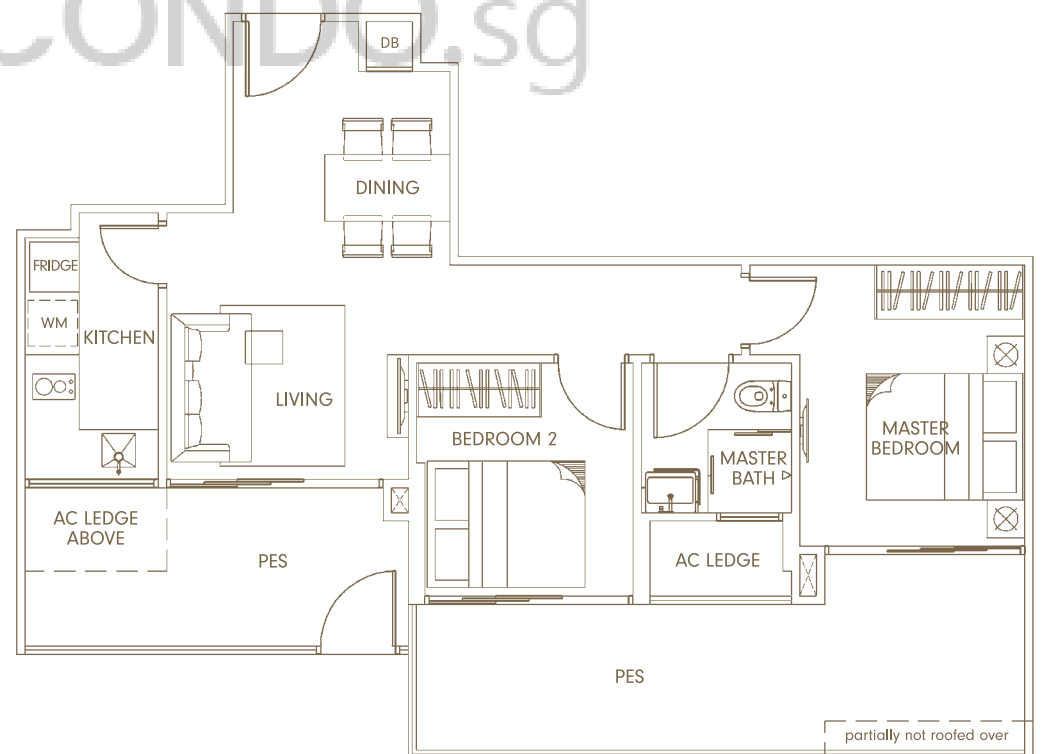
Area 538 sqft / 50 sqm
(Inclusive of AC Ledge & Balcony)



TYPE CG (2-Bedroom)

Unit #01-22 & #01-29 *High Ceiling

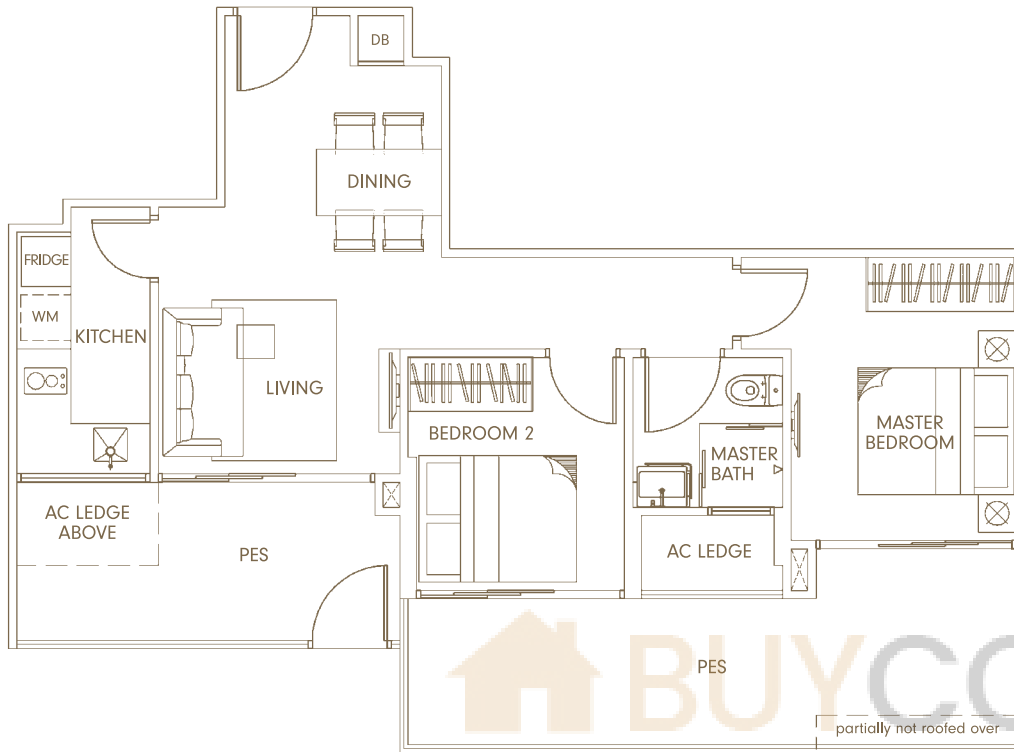
Area 818 sqft / 76 sqm
(Inclusive of AC Ledge & PES)



TYPE CAG (2-Bedroom)

Unit #01-01 & #01-14

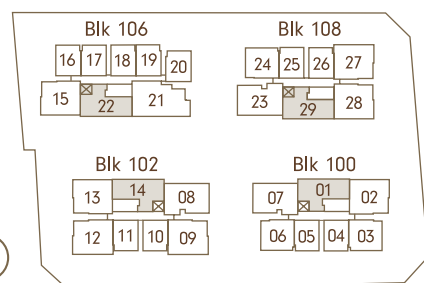
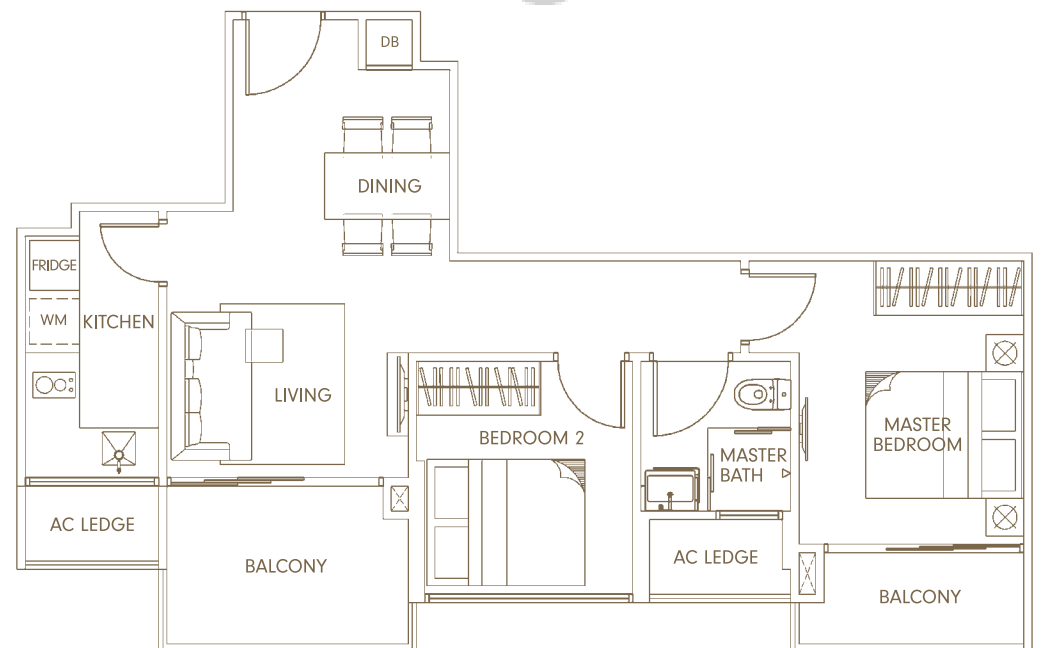
Area 818 sqft / 76 sqm
(Inclusive of AC Ledge & PES)



TYPE C (2-Bedroom)

Unit #02-01 to #04-01, #02-14 to #04-14,
#02-22 to #04-22, #02-29 to #04-29

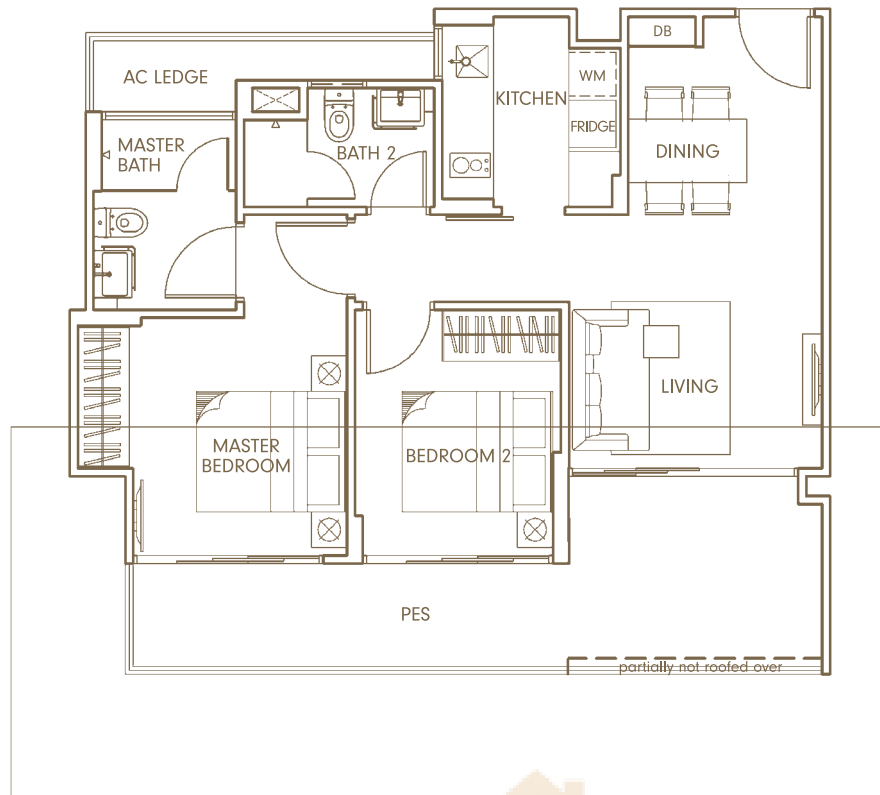
Area 667 sqft / 62 sqm
(Inclusive of AC Ledge & Balcony)



TYPE C1BG (2-Bedroom)

Unit #01-12

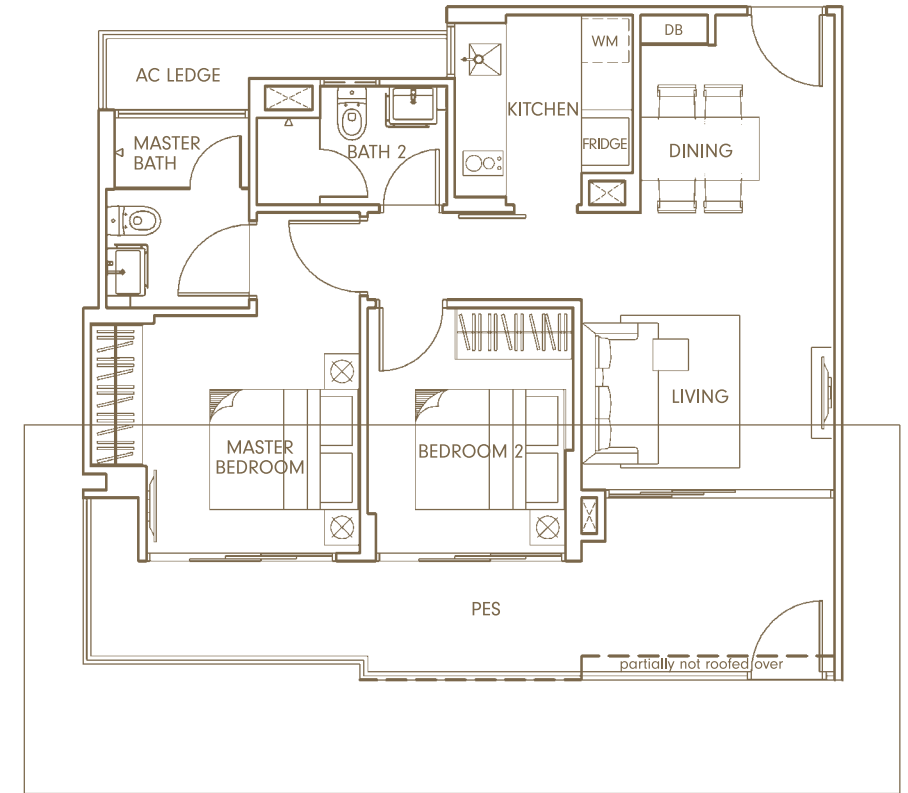
Area 807 sqft / 75 sqm (Inclusive of AC Ledge & PES)



TYPE C1G (2-Bedroom)

Unit #01-15 *High Ceiling

Area 829 sqft / 77 sqm (Inclusive of AC Ledge & PES)



TYPE C1AG (2-Bedroom)

Unit #01-27 *High Ceiling

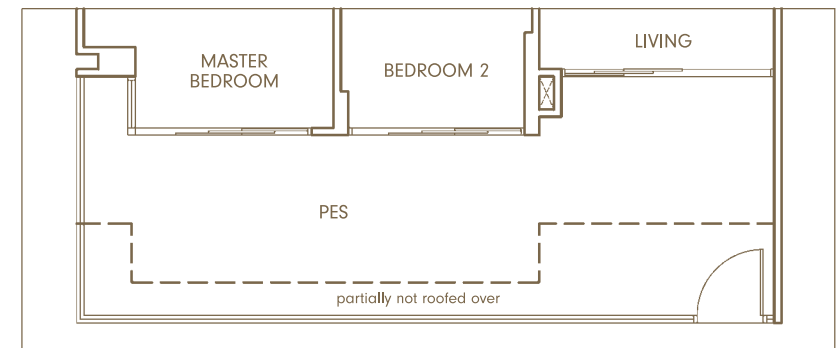
Area 797 sqft / 74 sqm (Inclusive of AC Ledge & PES)



TYPE C1CG (2-Bedroom)

Unit #01-02 & #01-13

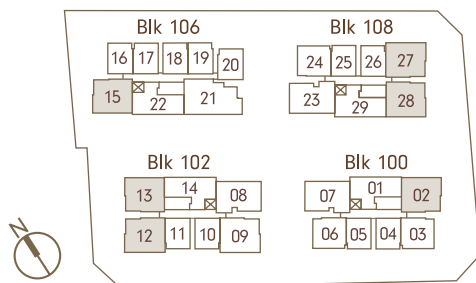
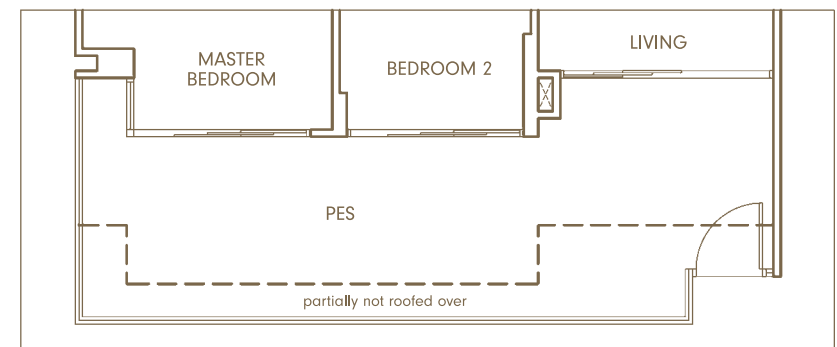
Area 947 sqft / 88 sqm (Inclusive of AC Ledge & PES)



TYPE C1DG (2-Bedroom)

Unit #01-28 *High Ceiling

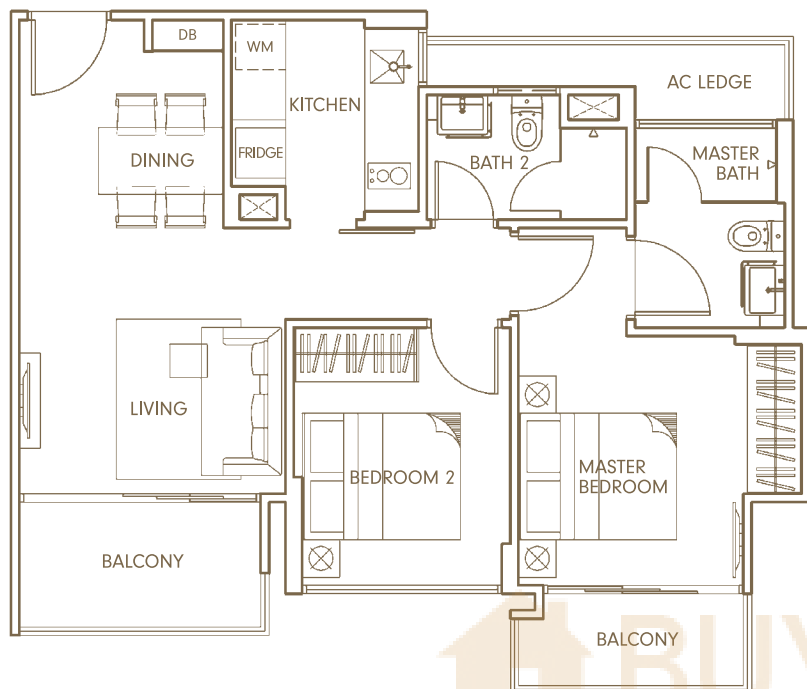
Area 936 sqft / 87 sqm (Inclusive of AC Ledge & PES)



TYPE C1 (2-Bedroom)

Unit #02-02 to #04-02, #02-13 to #04-13, #02-15 to #04-15,
#02-28 to #04-28

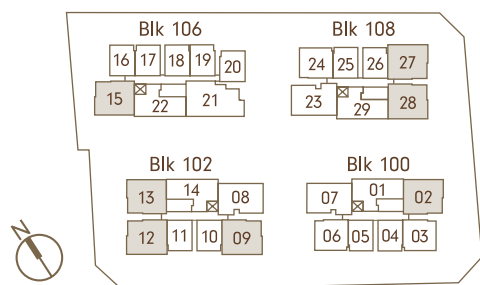
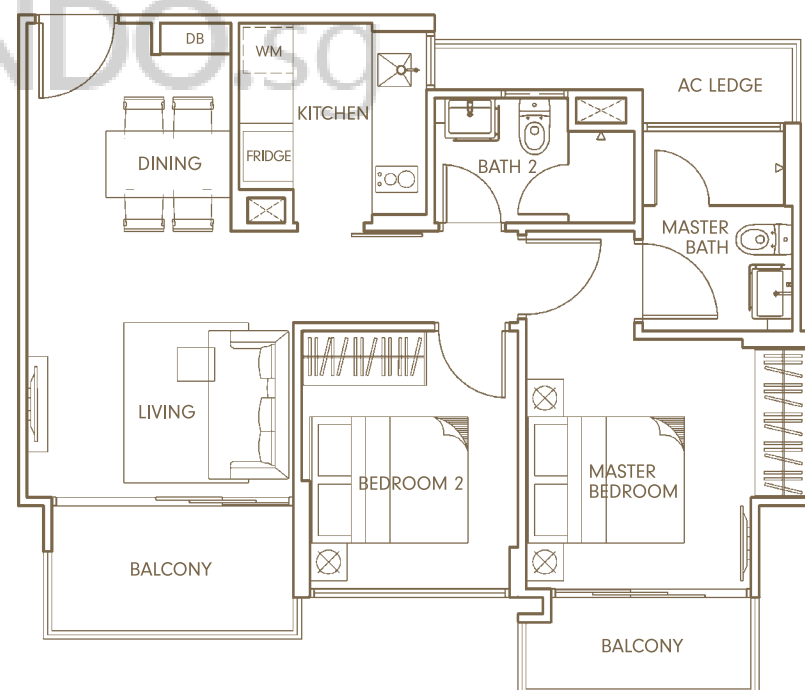
Area 721 sqft / 67 sqm
(Inclusive of AC Ledge & Balcony)



TYPE C1A (2-Bedroom)

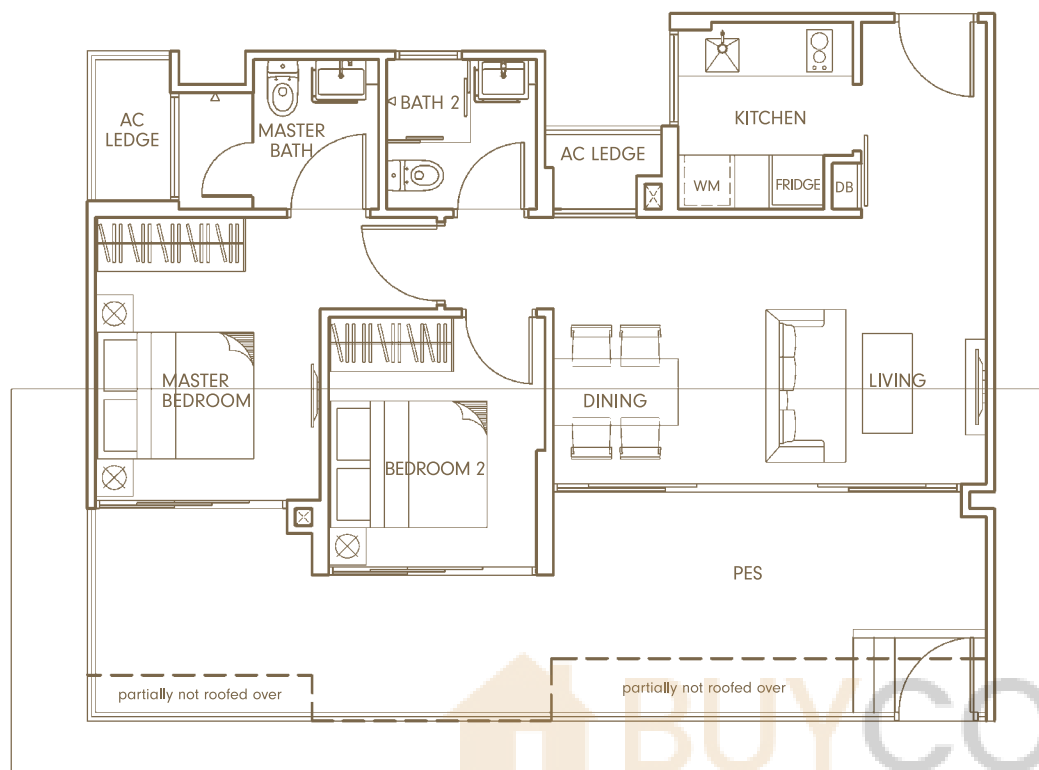
Unit #02-09 to #04-09, #02-12 to #04-12, #02-27 to #04-27

Area 721 sqft / 67 sqm
(Inclusive of AC Ledge & Balcony)



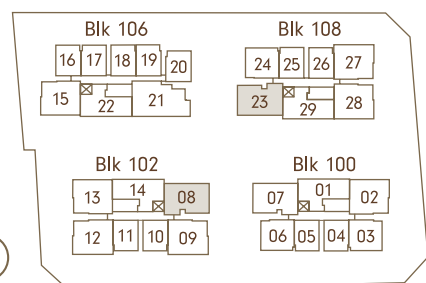
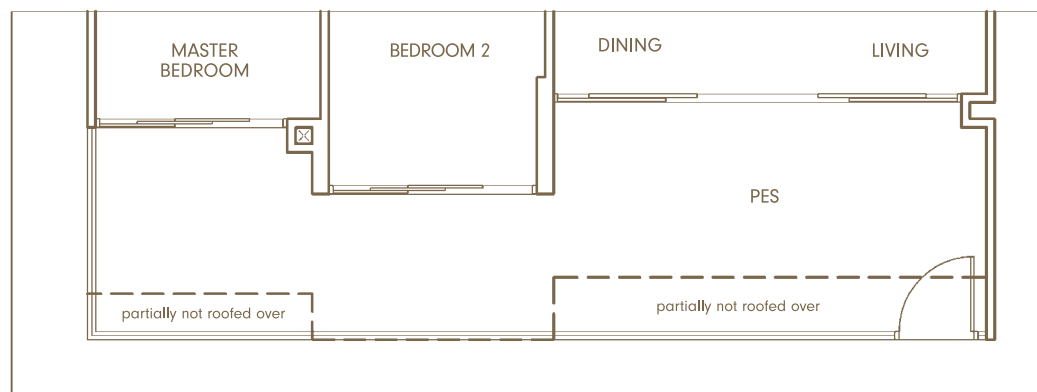
TYPE C2G (2-Bedroom)

Unit #01-23 *High Ceiling
 Area 926 sqft / 86 sqm
 (Inclusive of AC Ledge & PES)



TYPE C2AG (2-Bedroom)

Unit #01-08
 Area 926 sqft / 86 sqm
 (Inclusive of AC Ledge & PES)

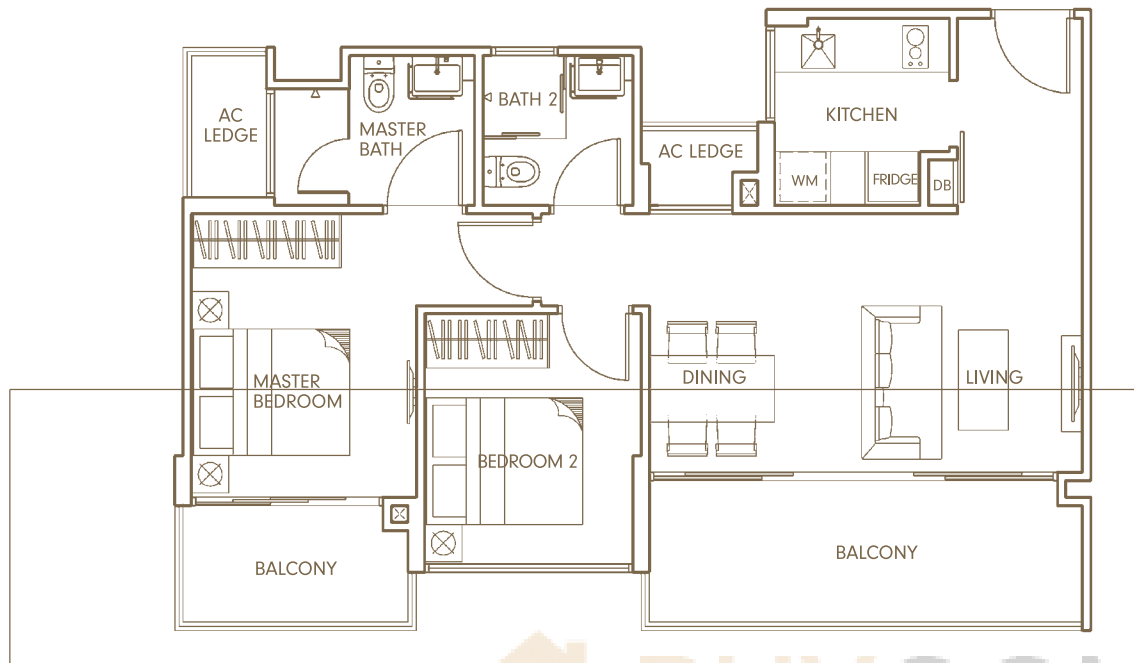


TYPE C2 (2-Bedroom)

Unit #03-07 to #04-07, #03-08 to #04-08, #03-23 to #04-23

Area 786 sqft / 73 sqm

(Inclusive of AC Ledge & Balcony)

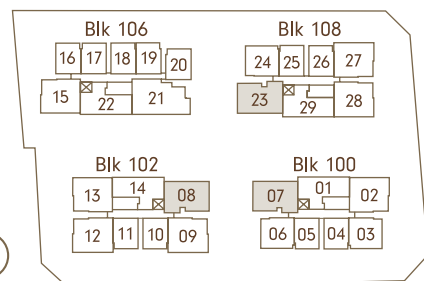
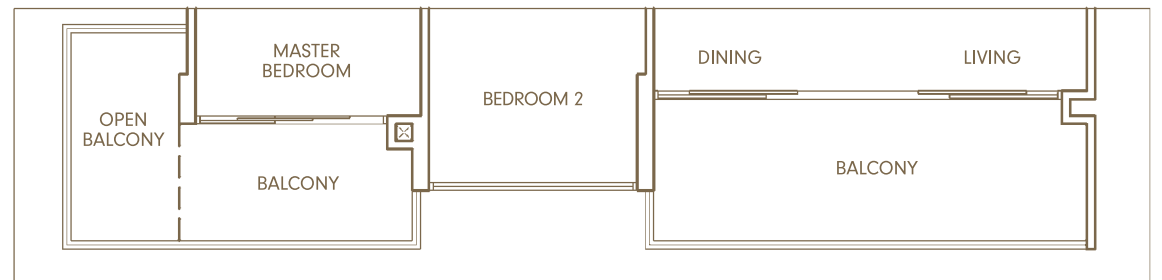


TYPE C2A (2-Bedroom)

Unit #02-07, #02-08 & #02-23

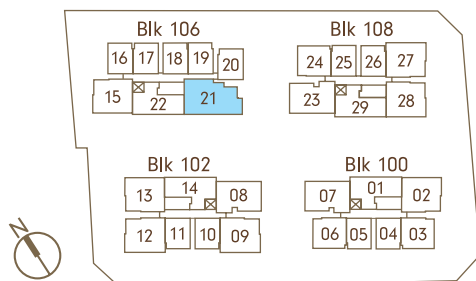
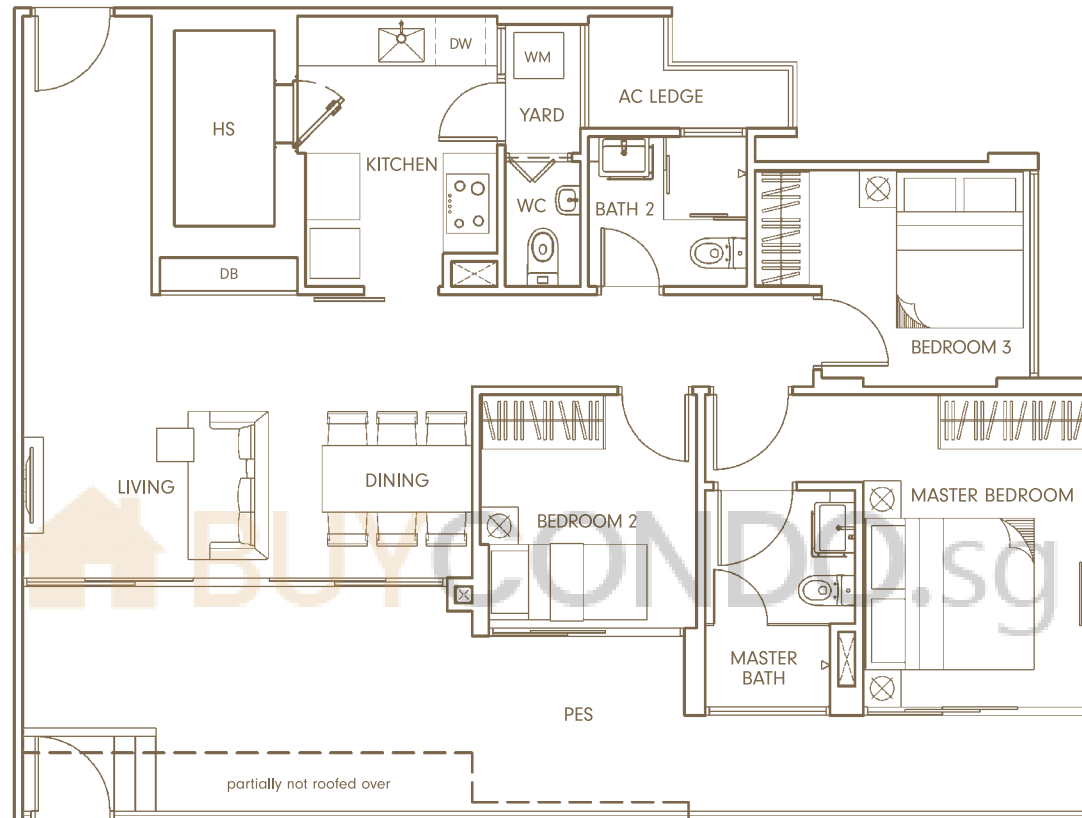
Area 829 sqft / 77 sqm

(Inclusive of AC Ledge, Balcony & Open Balcony)



TYPE DG (3-Bedroom)

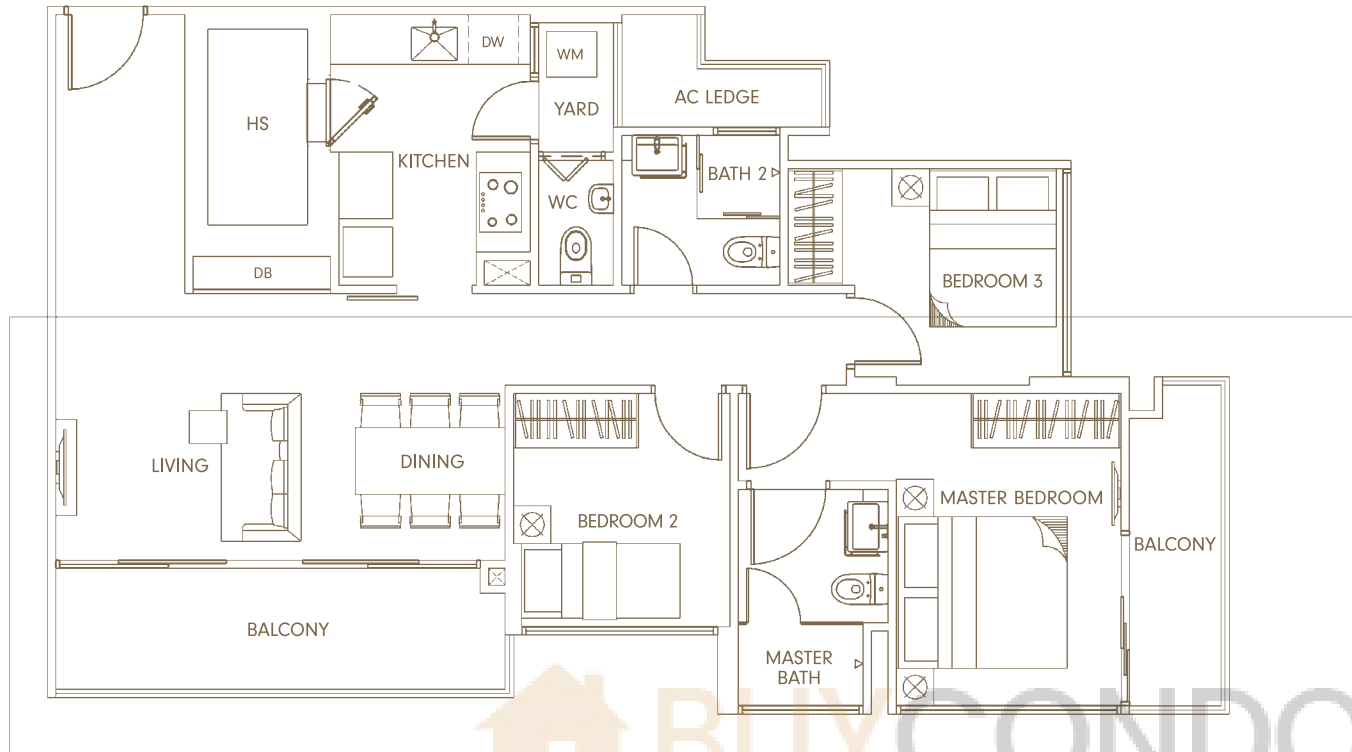
Unit #01-21 *High Ceiling
Area 1,238 sqft / 115 sqm
(Inclusive of AC Ledge & PES)



TYPE D (3-Bedroom)

Unit #03-21 & #04-21

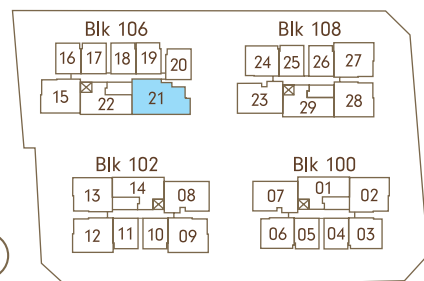
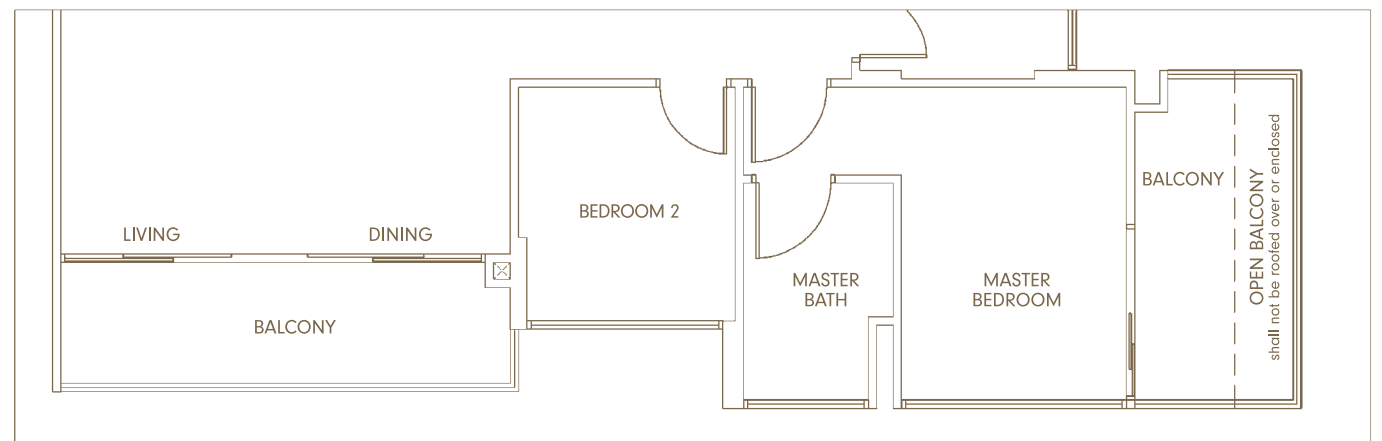
Area 1,076 sqft / 100 sqm
(Inclusive of AC Ledge & Balcony)



TYPE DA (3-Bedroom)

Unit #02-21

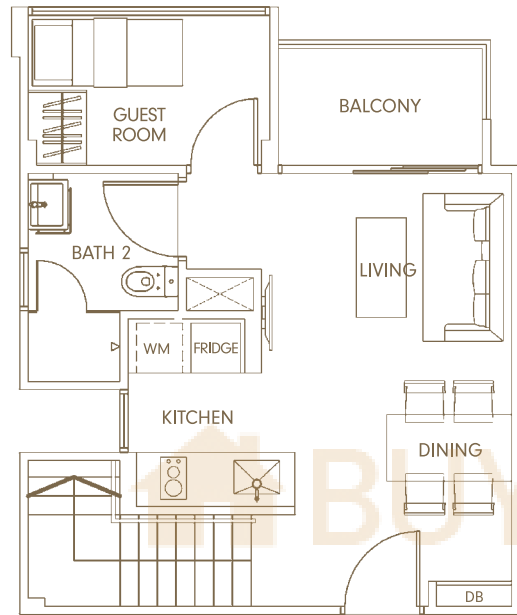
Area 1,109 sqft / 103 sqm
(Inclusive of AC Ledge, Balcony & Open Balcony)



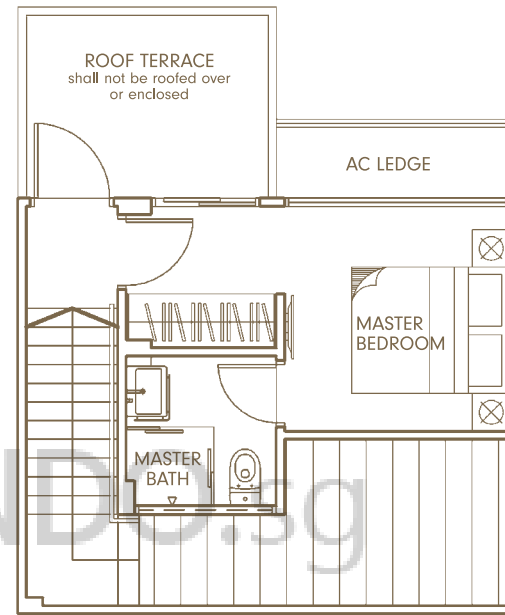
TYPE AP (1+Guest Room Penthouse)

Unit #05-04, #05-05, #05-10, #05-11,
#05-16, #05-17, #05-18, #05-19,
#05-25, #05-26

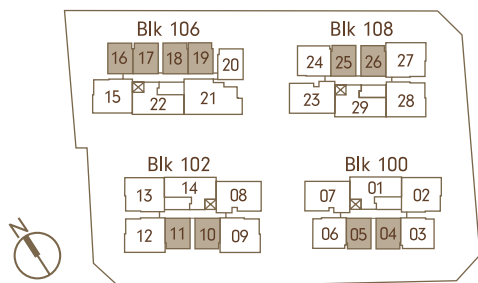
Area 775 sqft / 72 sqm
(Inclusive of AC Ledge, Balcony & Roof Terrace)



Lower Storey



Upper Storey

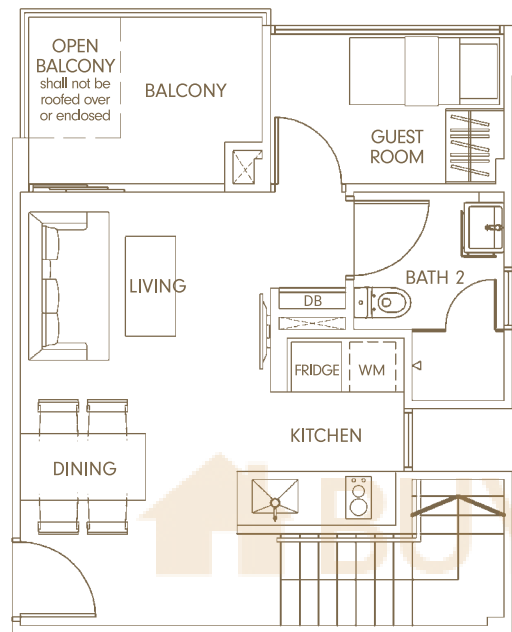


TYPE A1P (1+Guest Room Penthouse)

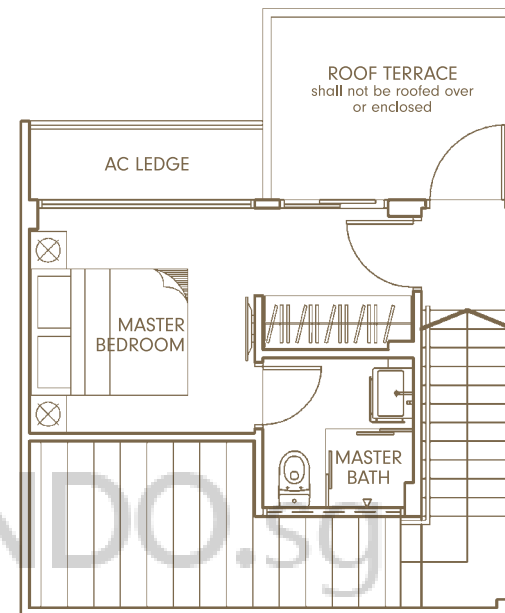
Unit #05-20

Area 786 sqft / 73 sqm

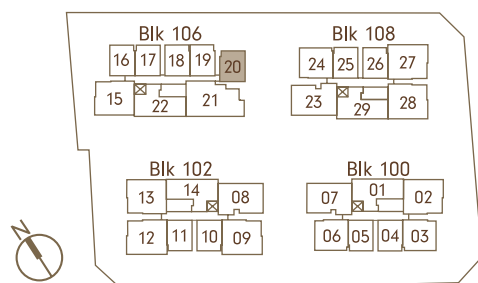
(Inclusive of AC Ledge, Balcony, Open Balcony & Roof Terrace)



Lower Storey



Upper Storey

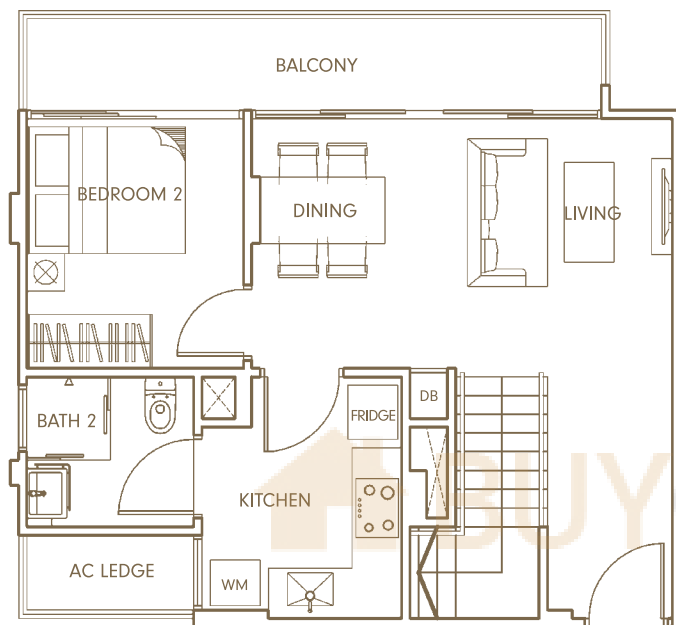


TYPE BP (2-Bedroom Penthouse)

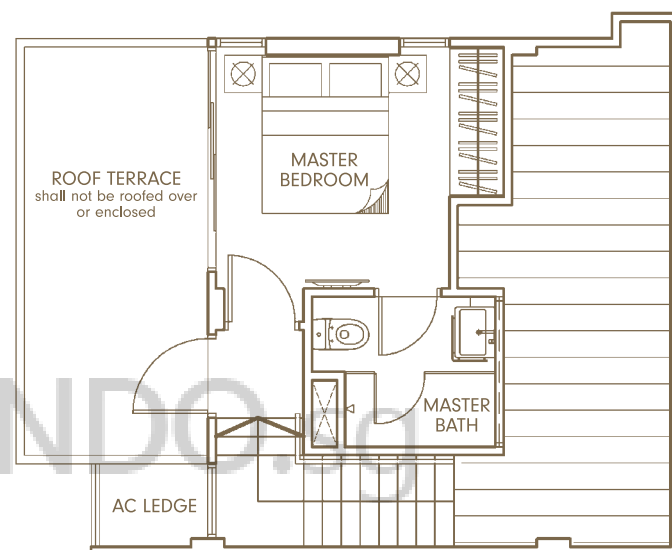
Unit #05-03, #05-06 & #05-24

Area 958 sqft / 89 sqm

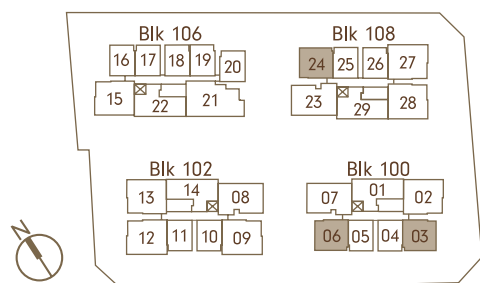
(Inclusive of AC Ledge, Balcony & Roof Terrace)



Lower Storey



Upper Storey

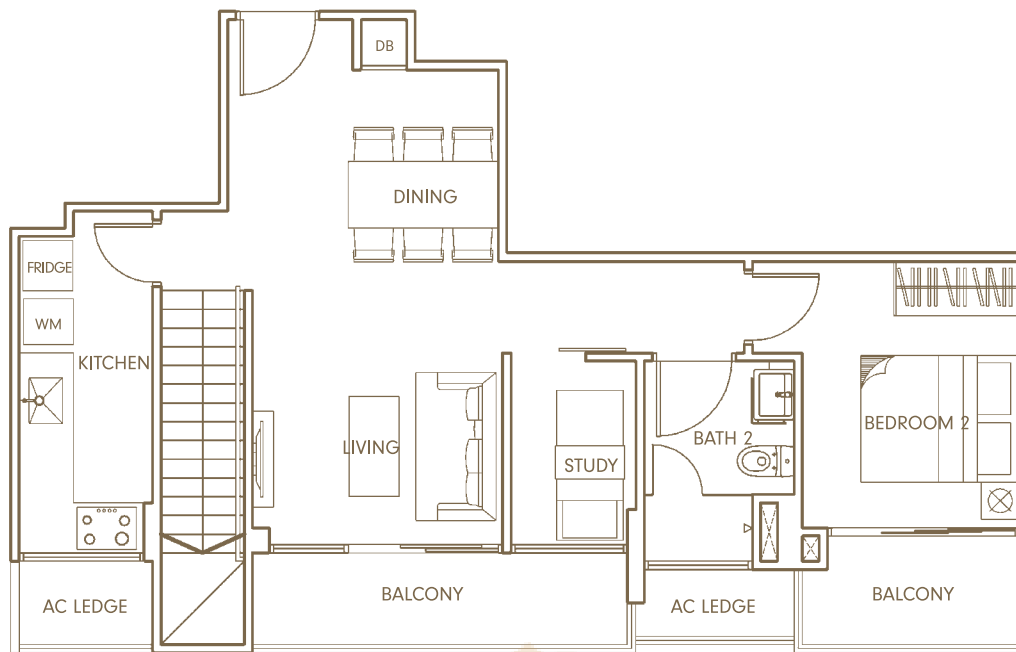


TYPE CP (2+Study Penthouse)

Unit #05-01, #05-14, #05-22, #05-29

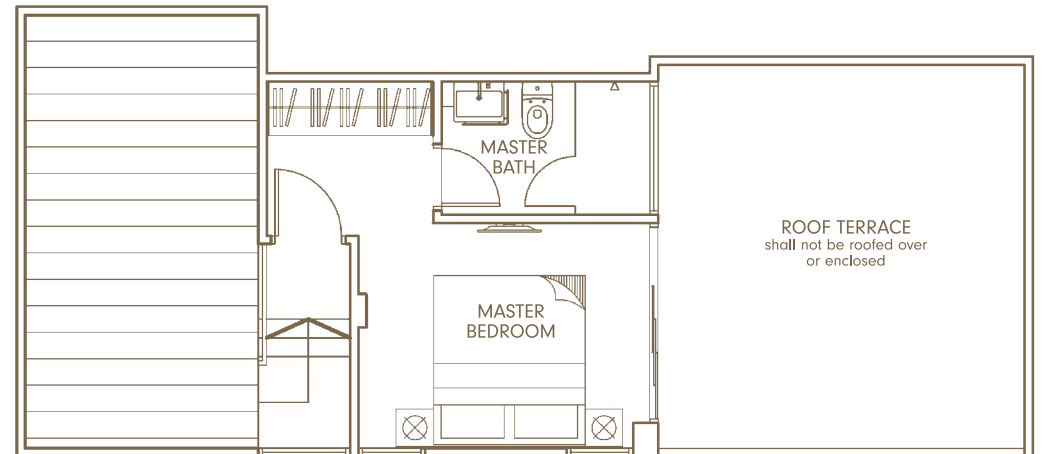
Area 1,195 sqft / 111 sqm

(Inclusive of AC Ledge, Balcony & Roof Terrace)

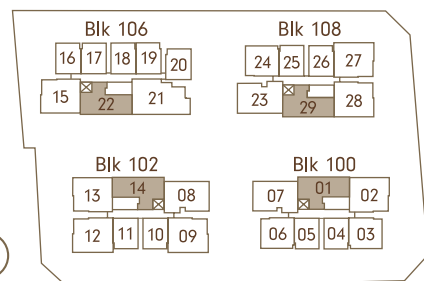


Lower Storey

BUYCONDO.sg



Upper Storey

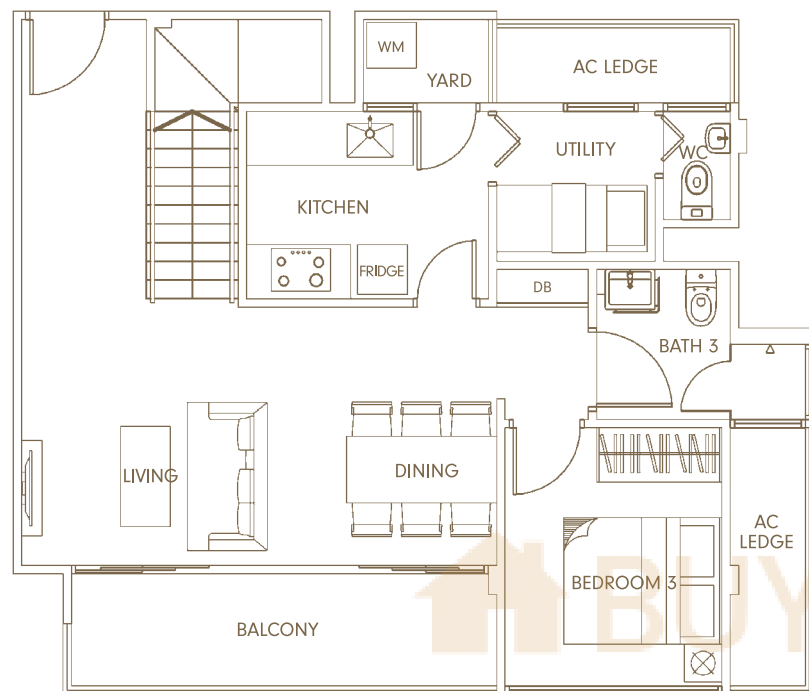


TYPE C1P (3-Bedroom + Utility Penthouse)

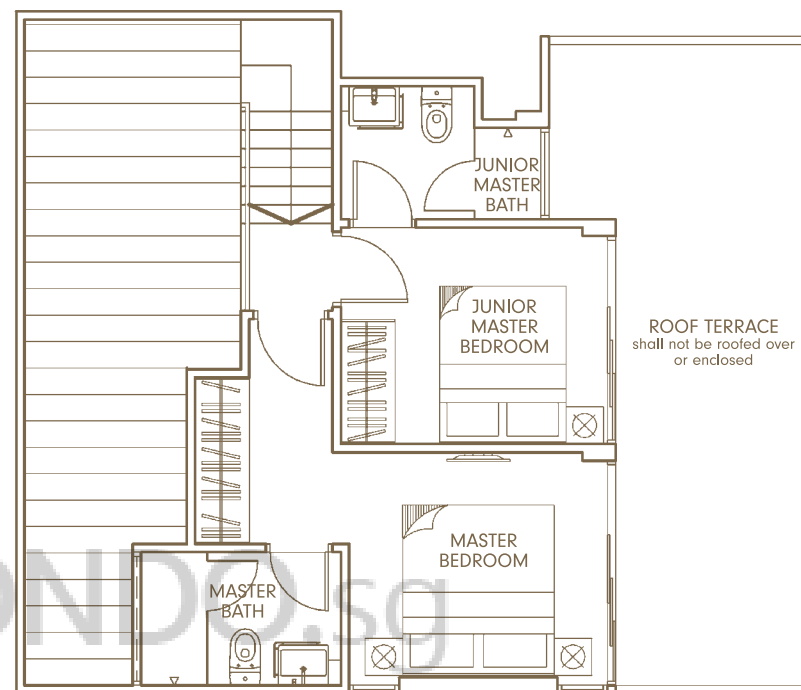
Unit #05-02, #05-13, #05-15 & #05-28

Area 1,378 sqft / 128 sqm

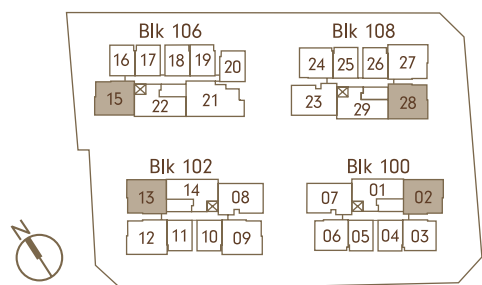
(Inclusive of AC Ledge, Balcony & Roof Terrace)



Lower Storey



Upper Storey

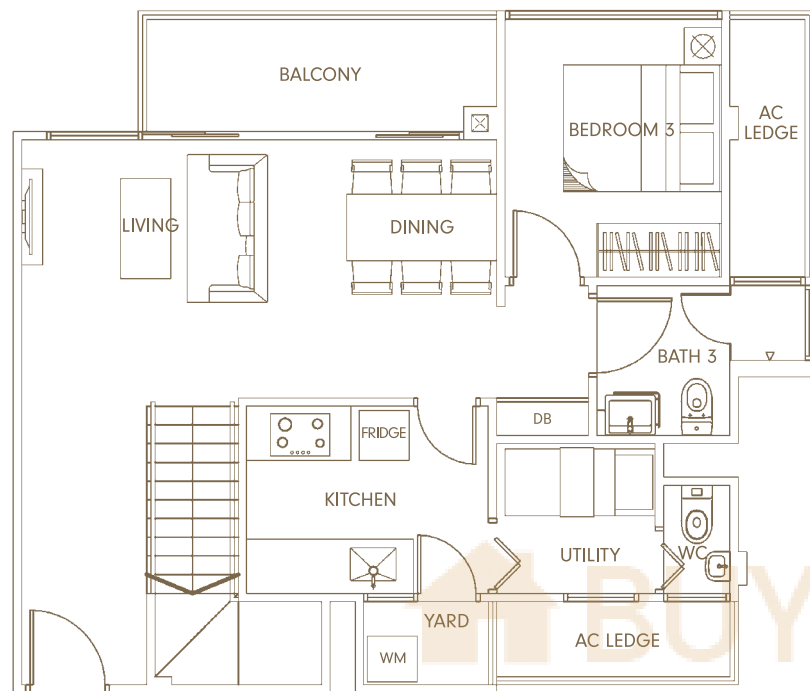


TYPE C1AP (3-Bedroom + Utility Penthouse)

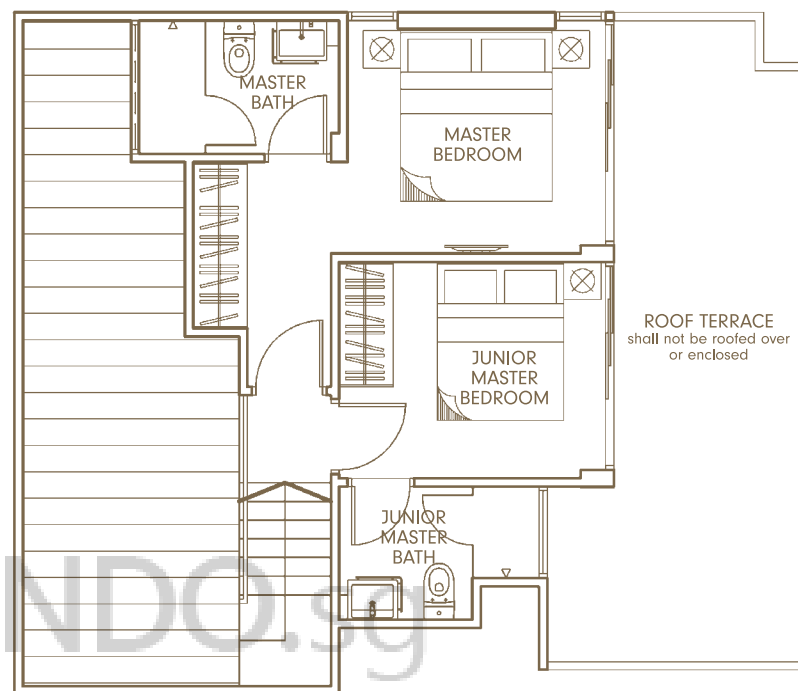
Unit #05-09, #05-12 & #05-27

Area 1,356 sqft / 126 sqm

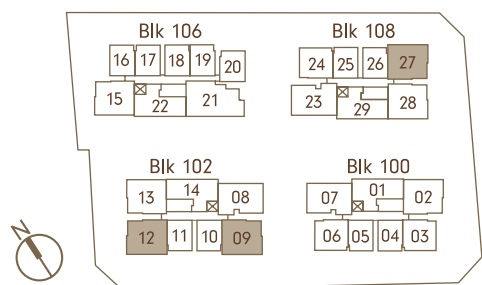
(Inclusive of AC Ledge, Balcony & Roof Terrace)



Lower Storey



Upper Storey

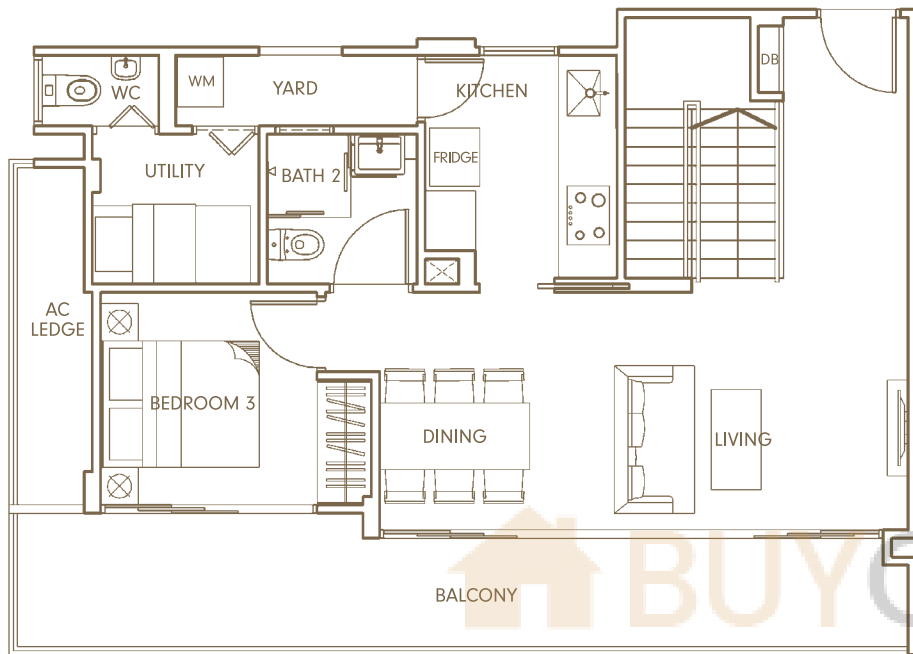


TYPE C2P (3-Bedroom + Utility Penthouse)

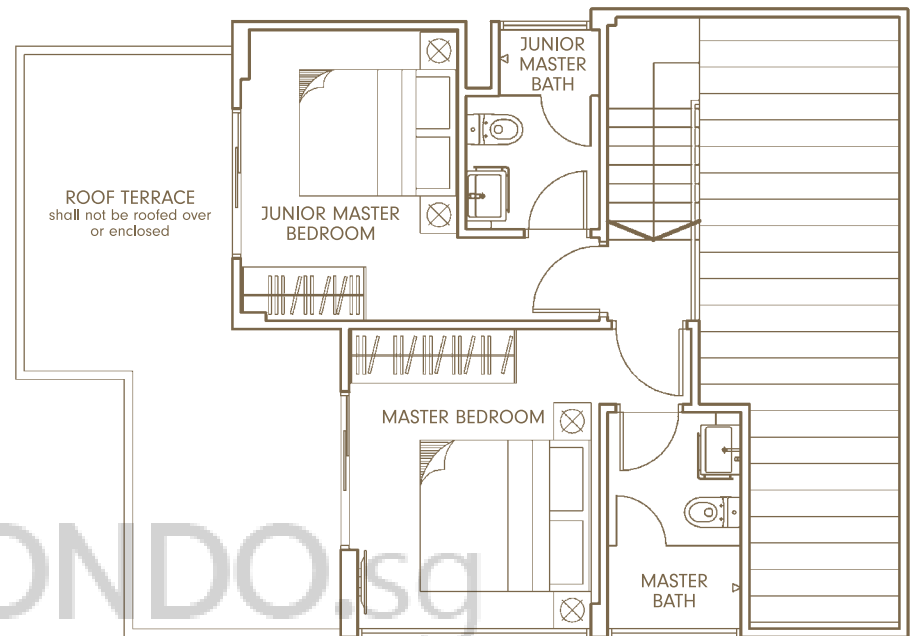
Unit #05-07, #05-08 & #05-23

Area 1,453 sqft / 135 sqm

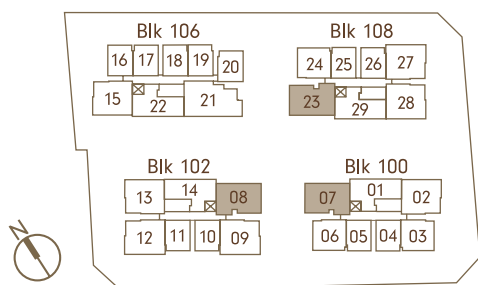
(Inclusive of AC Ledge, Balcony & Roof Terrace)



Lower Storey



Upper Storey

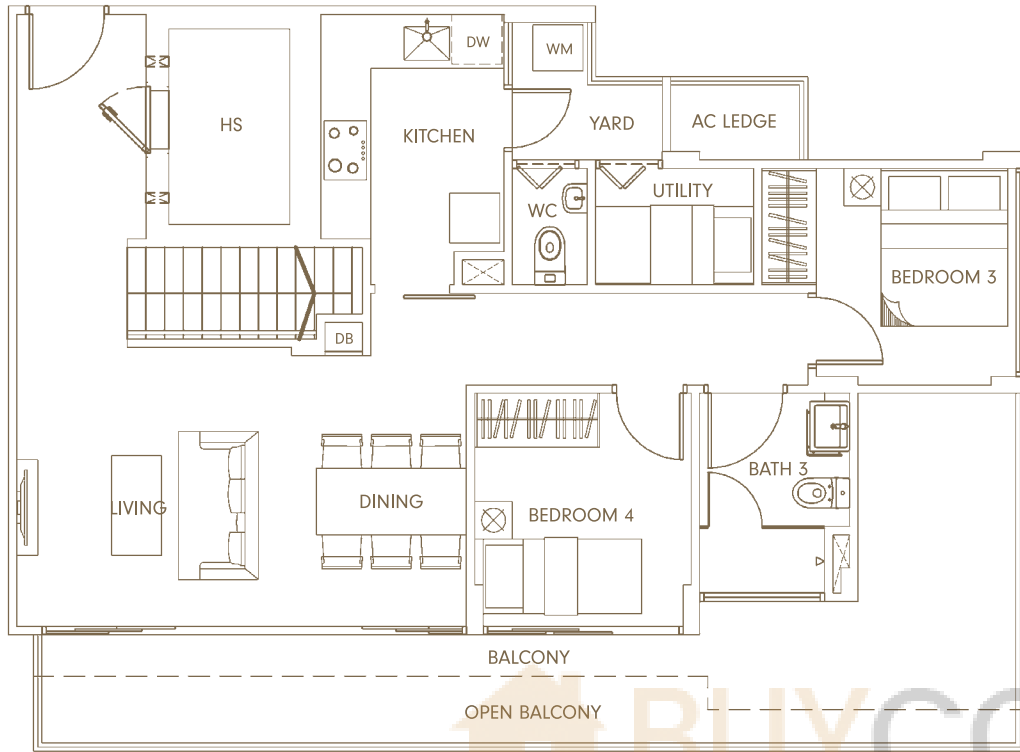


TYPE DP (4-Bedroom + Utility Penthouse)

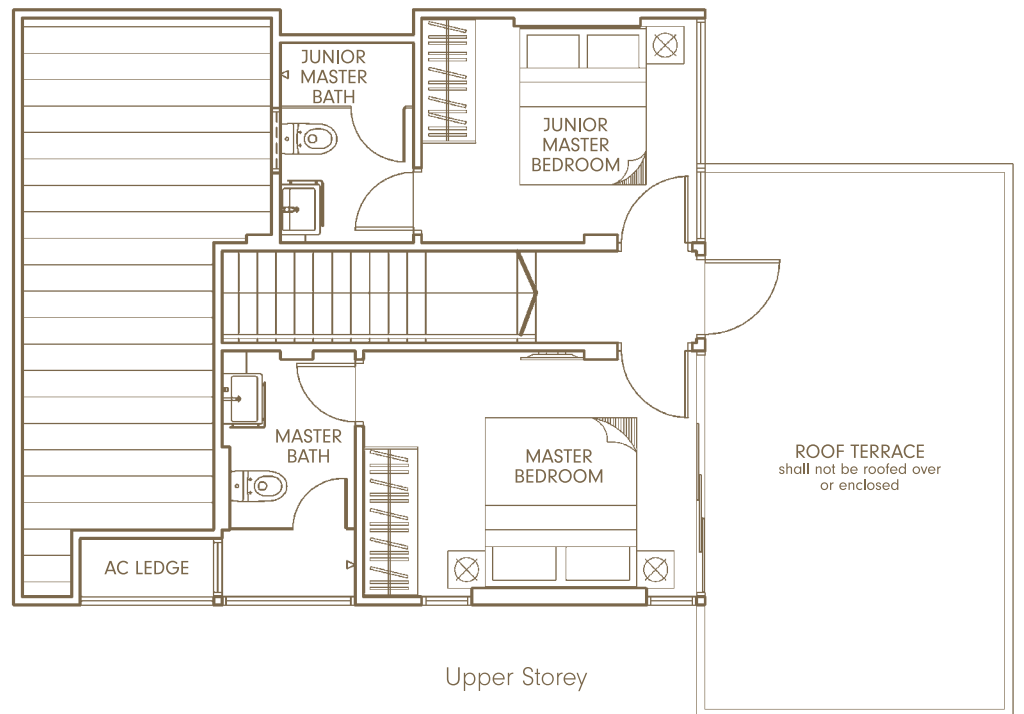
Unit #05-21

Area 1,755 sqft / 163 sqm

(Inclusive of AC Ledge, Balcony, Open Balcony & Roof Terrace)



Lower Storey



Upper Storey

