

# æ floorplan

## Type A1

2-Bedroom  
71 sqm / 764 sqft

#03-04, #06-04, #09-04,  
#12-04, #15-04

## Type A1a

2-Bedroom  
65 sqm / 700 sqft

#04-04, #05-04, #07-04,  
#08-04, #10-04, #11-04,  
#13-04, #14-04, #16-04

unit with high ceiling in  
bedrooms, living  
#17-04

## Type B1a

3-Bedroom  
82 sqm / 883 sqft

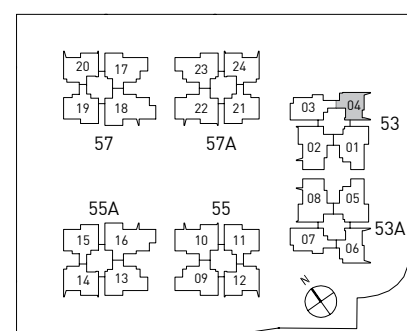
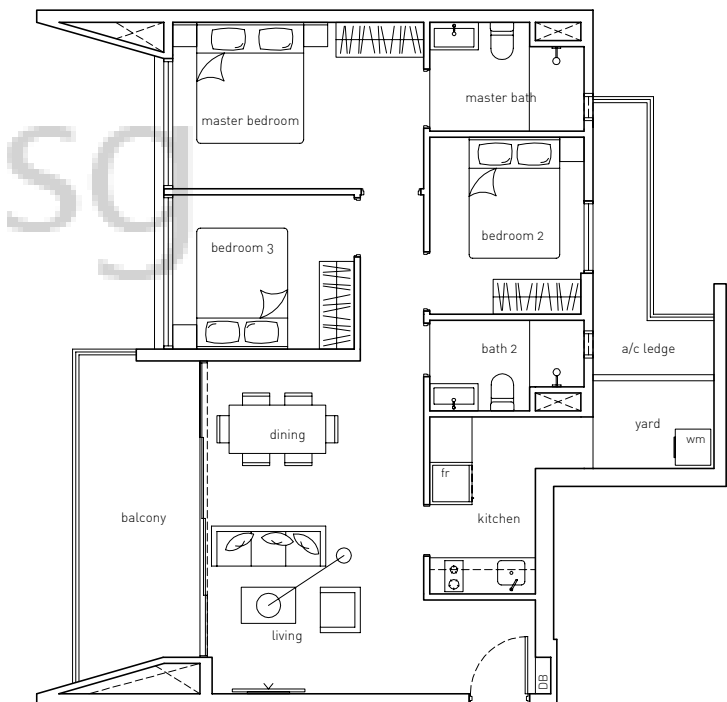
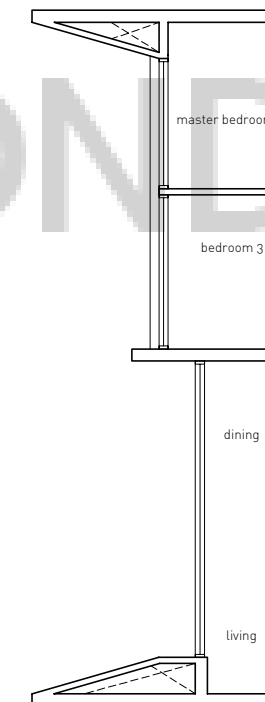
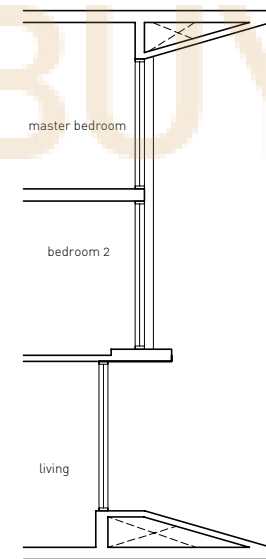
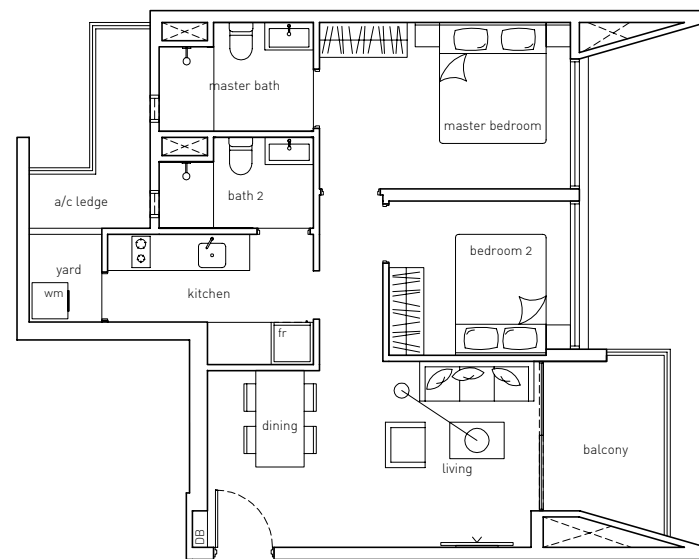
#02-06, #04-06, #05-06,  
#07-06, #08-06, #10-06,  
#11-06, #13-06, #14-06,  
#16-06

unit with high ceiling in front  
facing bedrooms, living, dining  
#17-06

## Type B1

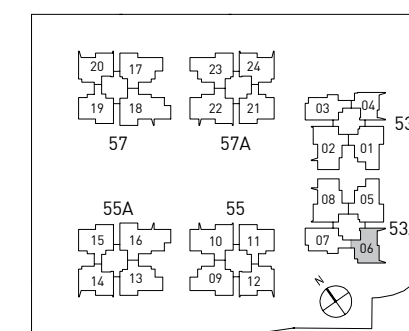
3-Bedroom  
93 sqm / 1001 sqft

#03-06, #06-06, #09-06,  
#12-06, #15-06



Area includes A/C ledge, balcony, PES and void (where applicable). The plans are subject to change as may be required or approved by the relevant authorities. The plans are not drawn to scale and are for purpose of a visual representation of different layouts that are available. All areas are approximate and subject to final survey. The developer and its agent cannot be held liable for inaccuracies.

\* at 1st storey units, PES in lieu of balcony



Area includes A/C ledge, balcony, PES and void (where applicable). The plans are subject to change as may be required or approved by the relevant authorities. The plans are not drawn to scale and are for purpose of a visual representation of different layouts that are available. All areas are approximate and subject to final survey. The developer and its agent cannot be held liable for inaccuracies.

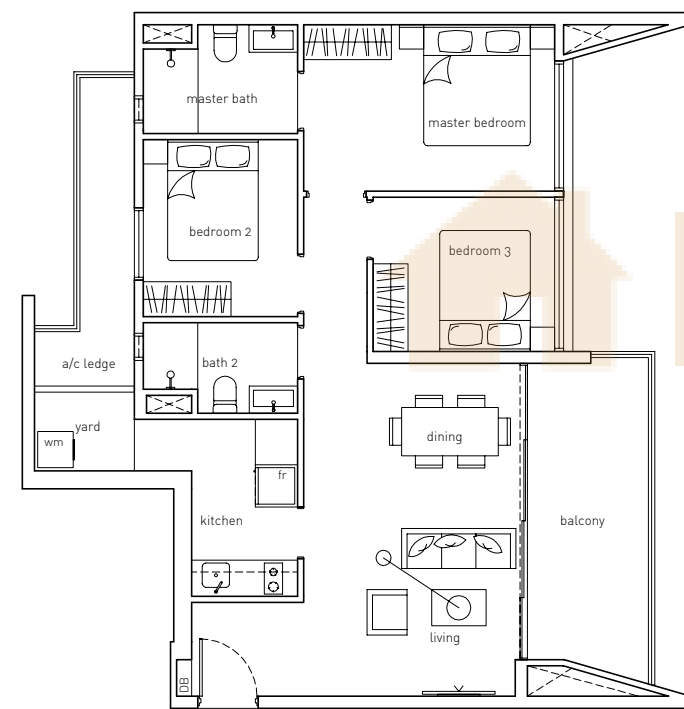
\* at 1st storey units, PES in lieu of balcony

# æ floorplan

## Type B2

3-Bedroom  
92 sqm / 990 sqft

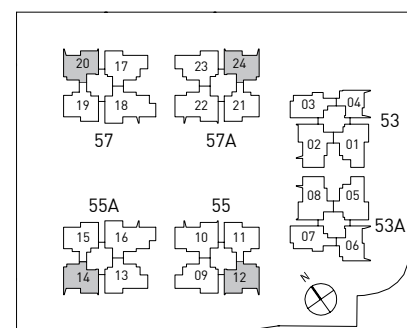
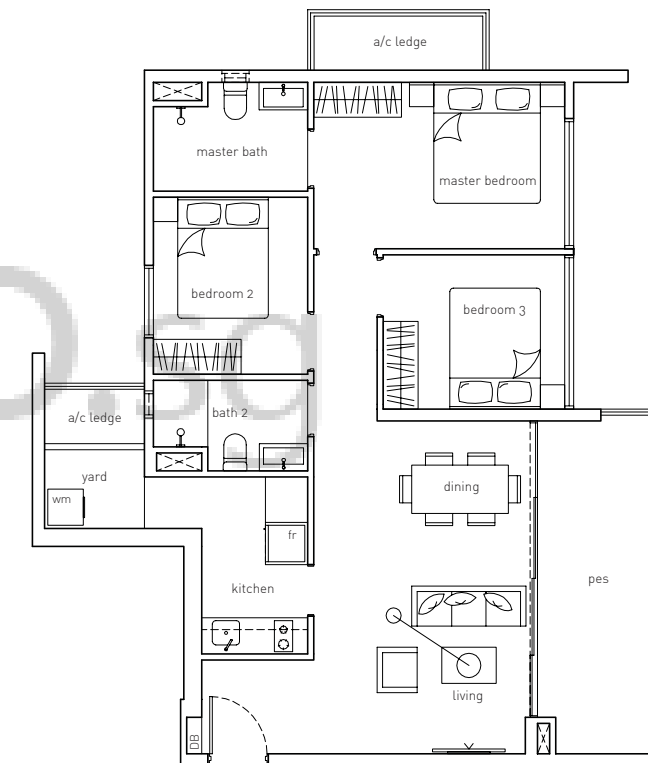
- #02-12 to #16-12
- #02-14 to #16-14 (mirrored)
- #02-20 to #16-20
- #03-24 to #16-24 (mirrored)



## Type B2g

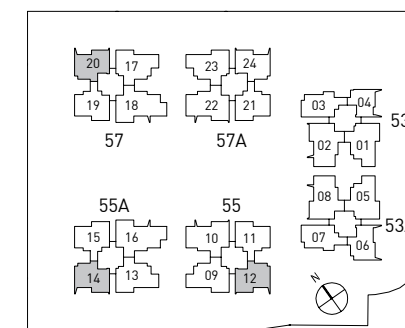
3-Bedroom  
92 sqm / 990 sqft

- #01-12
- #01-14 (mirrored)
- #01-20



Area includes A/C ledge, balcony, PES and void (where applicable). The plans are subject to change as may be required or approved by the relevant authorities. The plans are not drawn to scale and are for purpose of a visual representation of different layouts that are available. All areas are approximate and subject to final survey. The developer and its agent cannot be held liable for inaccuracies.

\* at 1st storey units, PES in lieu of balcony



Area includes A/C ledge, balcony, PES and void (where applicable). The plans are subject to change as may be required or approved by the relevant authorities. The plans are not drawn to scale and are for purpose of a visual representation of different layouts that are available. All areas are approximate and subject to final survey. The developer and its agent cannot be held liable for inaccuracies.

\* at 1st storey units, PES in lieu of balcony

# æ floorplan

## Type B3

3-Bedroom  
93 sqm / 1001 sqft

#04-03 to #15-03  
#02-07 to #15-07 (mirrored)

## Type B3g

3-Bedroom  
93 sqm / 1001 sqft

#01-07 (mirrored)

## Type BP

3-Bedroom (Premium)  
102 sqm / 1098 sqft

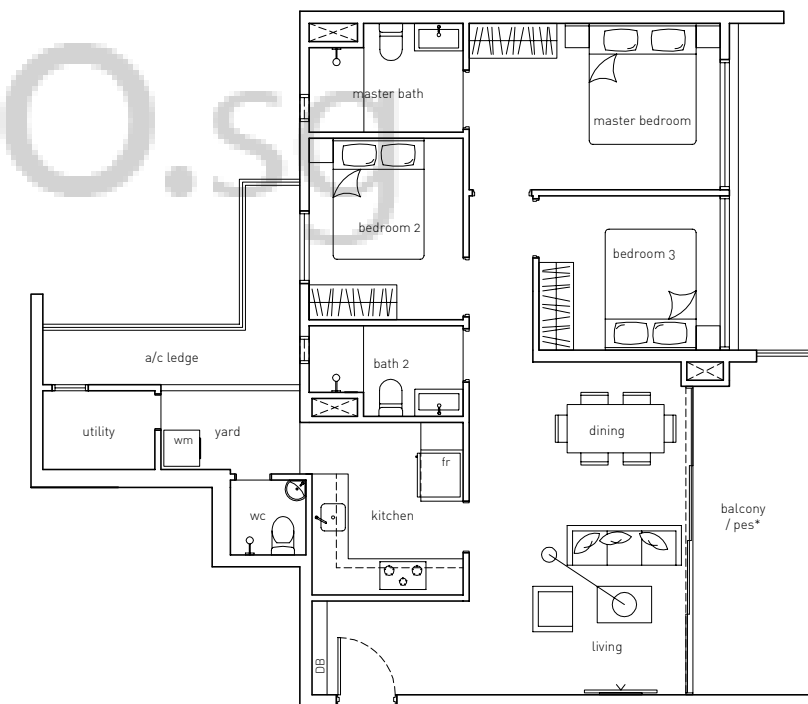
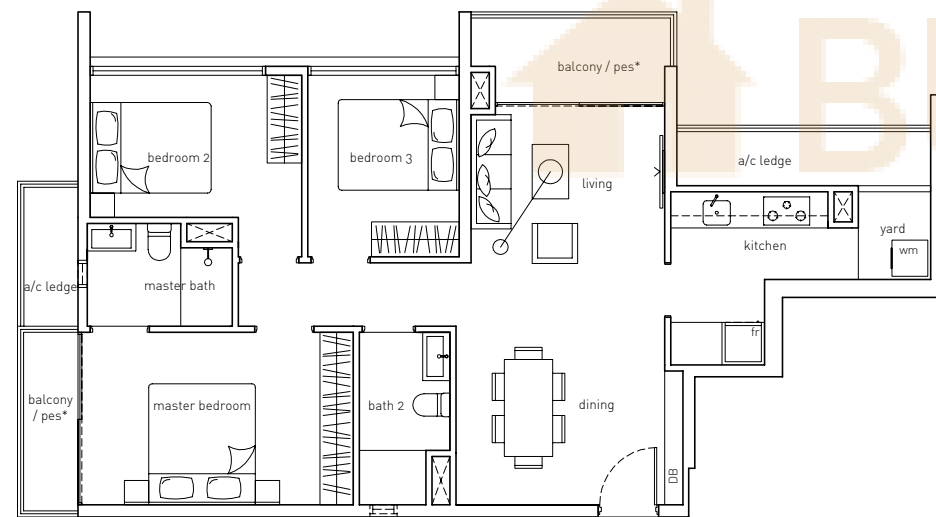
#02-11 to #16-11 (mirrored)  
#02-15 to #16-15  
#02-19 to #16-19 (mirrored)  
#02-21 to #16-21

unit with high ceiling in front  
facing bedrooms, living, dining  
#17-11 (mirrored), #17-15  
#17-19 (mirrored), #17-21

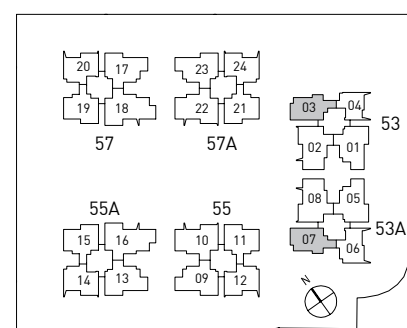
## Type BPg

3-Bedroom (Premium)  
102 sqm / 1098 sqft

#01-11 (mirrored)  
#01-15  
#01-19 (mirrored)  
#01-21

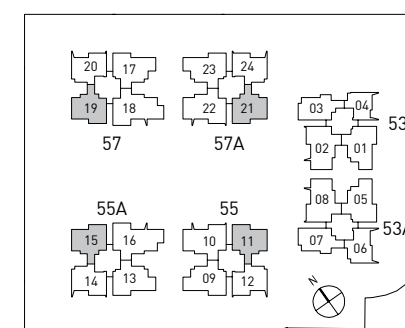


BUYCONDO.SG



Area includes A/C ledge, balcony, PES and void (where applicable). The plans are subject to change as may be required or approved by the relevant authorities. The plans are not drawn to scale and are for purpose of a visual representation of different layouts that are available. All areas are approximate and subject to final survey. The developer and its agent cannot be held liable for inaccuracies.

\* at 1st storey units, PES in lieu of balcony



Area includes A/C ledge, balcony, PES and void (where applicable). The plans are subject to change as may be required or approved by the relevant authorities. The plans are not drawn to scale and are for purpose of a visual representation of different layouts that are available. All areas are approximate and subject to final survey. The developer and its agent cannot be held liable for inaccuracies.

\* at 1st storey units, PES in lieu of balcony

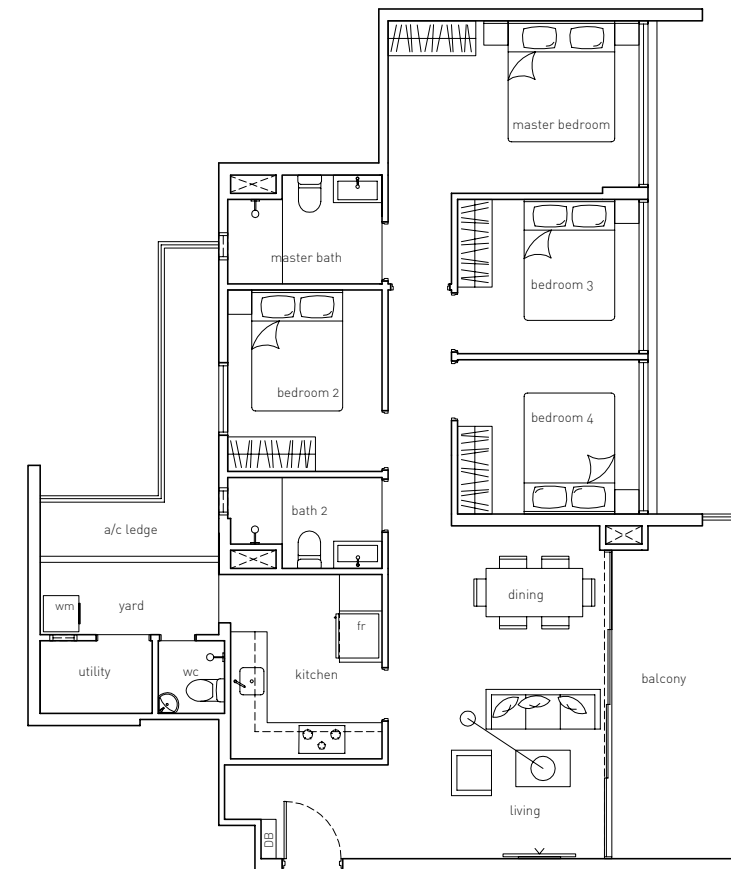
# æ floorplan

## Type CP

4-Bedroom (Premium)  
114 sqm / 1227 sqft

- #02-01 to #16-01 (mirrored)
- #02-05 to #16-05
- #02-09 to #15-09 (mirrored)
- #02-13 to #15-13
- #02-17 to #15-17 (mirrored)
- #02-23 to #15-23

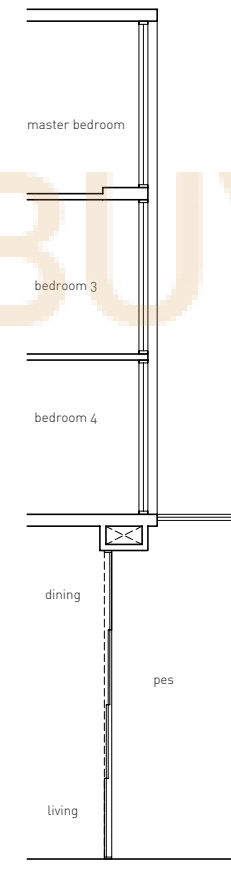
unit with high ceiling in front facing bedrooms, living, dining  
#17-01 (mirrored)  
#17-05



## Type CPg

4-Bedroom (Premium)  
114 sqm / 1227 sqft

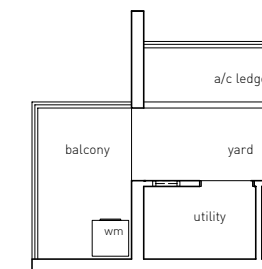
- #01-09 (mirrored)
- #01-13
- #01-17 (mirrored)
- #01-23



## Type CJt

4-Bedroom (Prestige)  
125 sqm / 1346 sqft

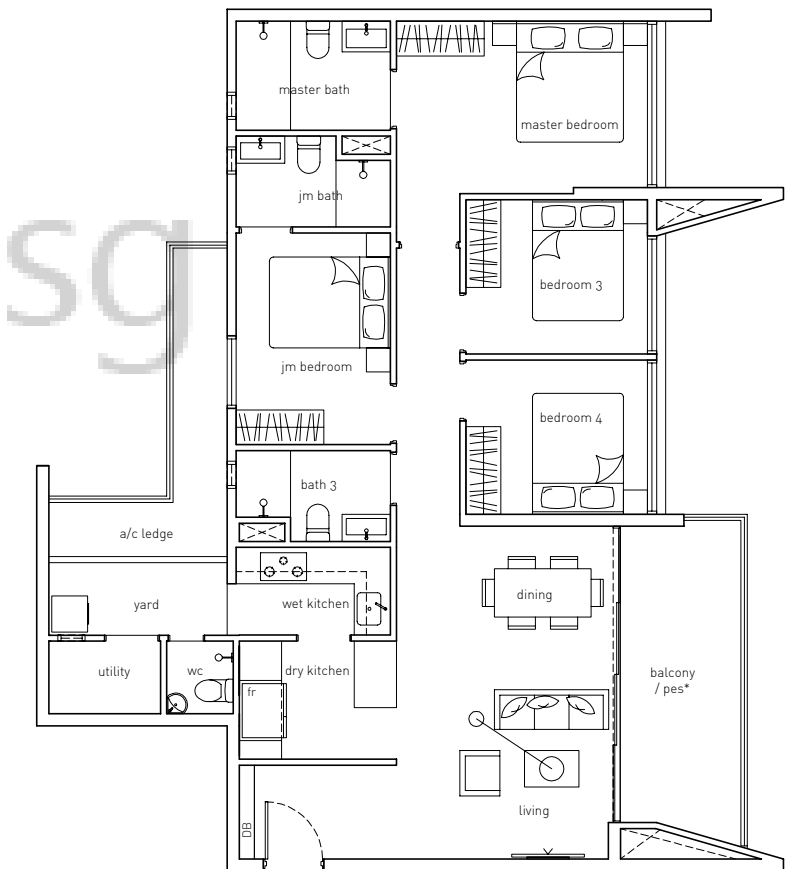
- unit with high ceiling in bedrooms, living, dining
- #17-10
- #17-22 (mirrored)



## Type CJ

4-Bedroom (Prestige)  
121 sqm / 1302 sqft

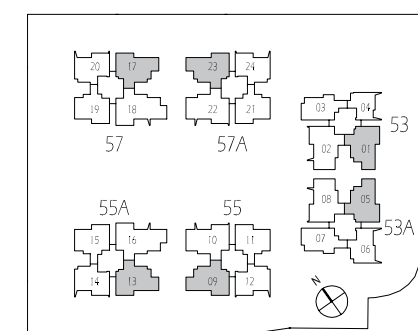
- #02-02 to #15-02
- #02-08 to #15-08 (mirrored)
- #02-10 to #16-10
- #02-22 to #16-22 (mirrored)



## Type CJg

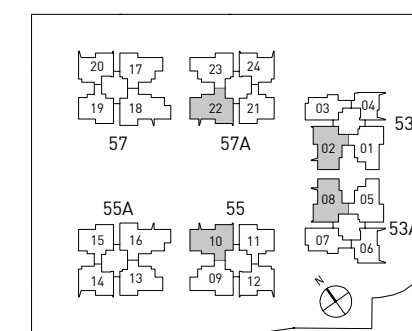
4-Bedroom (Prestige)  
121 sqm / 1302 sqft

- #01-02
- #01-08 (mirrored)
- #01-10
- #01-22 (mirrored)



Area includes A/C ledge, balcony, PES and void (where applicable). The plans are subject to change as may be required or approved by the relevant authorities. The plans are not drawn to scale and are for purpose of a visual representation of different layouts that are available. All areas are approximate and subject to final survey. The developer and its agent cannot be held liable for inaccuracies.

\* at 1st storey units, PES in lieu of balcony



Area includes A/C ledge, balcony, PES and void (where applicable). The plans are subject to change as may be required or approved by the relevant authorities. The plans are not drawn to scale and are for purpose of a visual representation of different layouts that are available. All areas are approximate and subject to final survey. The developer and its agent cannot be held liable for inaccuracies.

\* at 1st storey units, PES in lieu of balcony

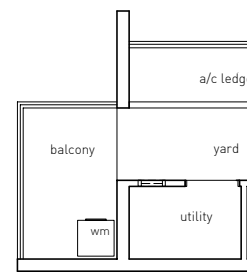


# æ floorplan

## Type DJt

5-Bedroom (Prestige)  
141 sqm / 1518 sqft

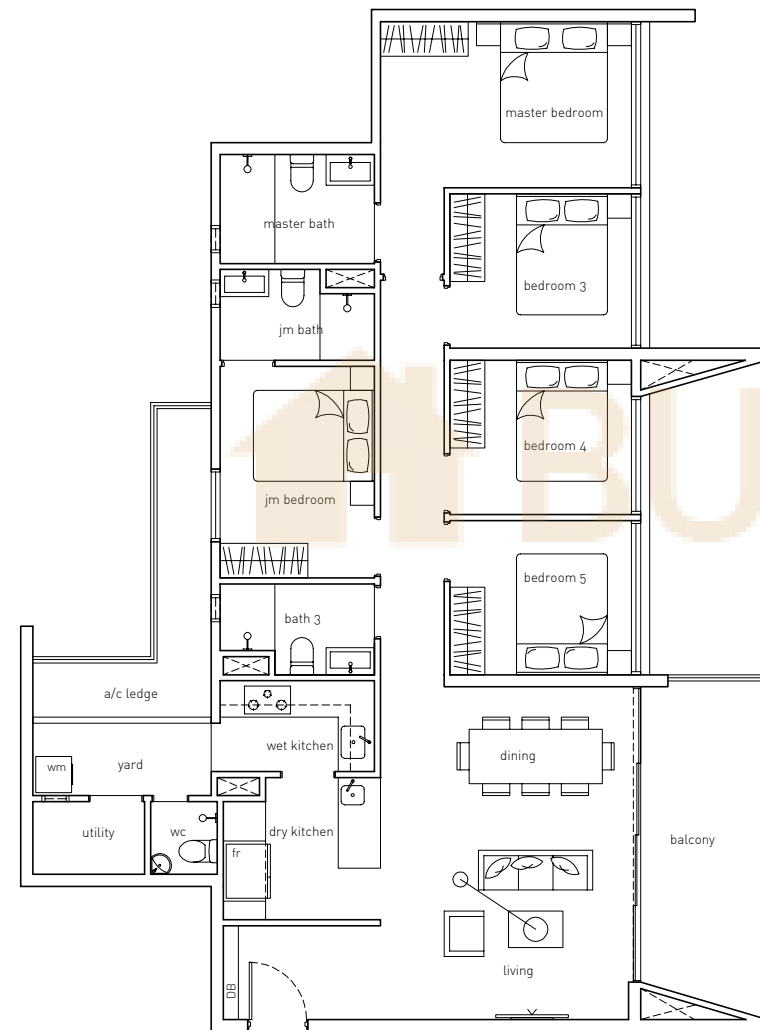
unit with high ceiling in  
bedrooms, living, dining  
#17-16 (mirrored)  
#17-18



## Type DJ

5-Bedroom (Prestige)  
137 sqm / 1475 sqft

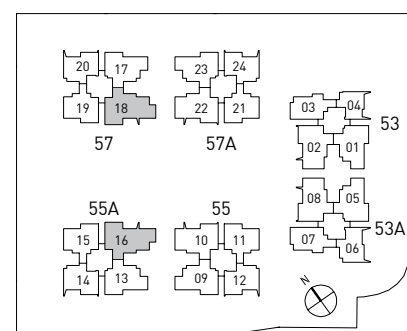
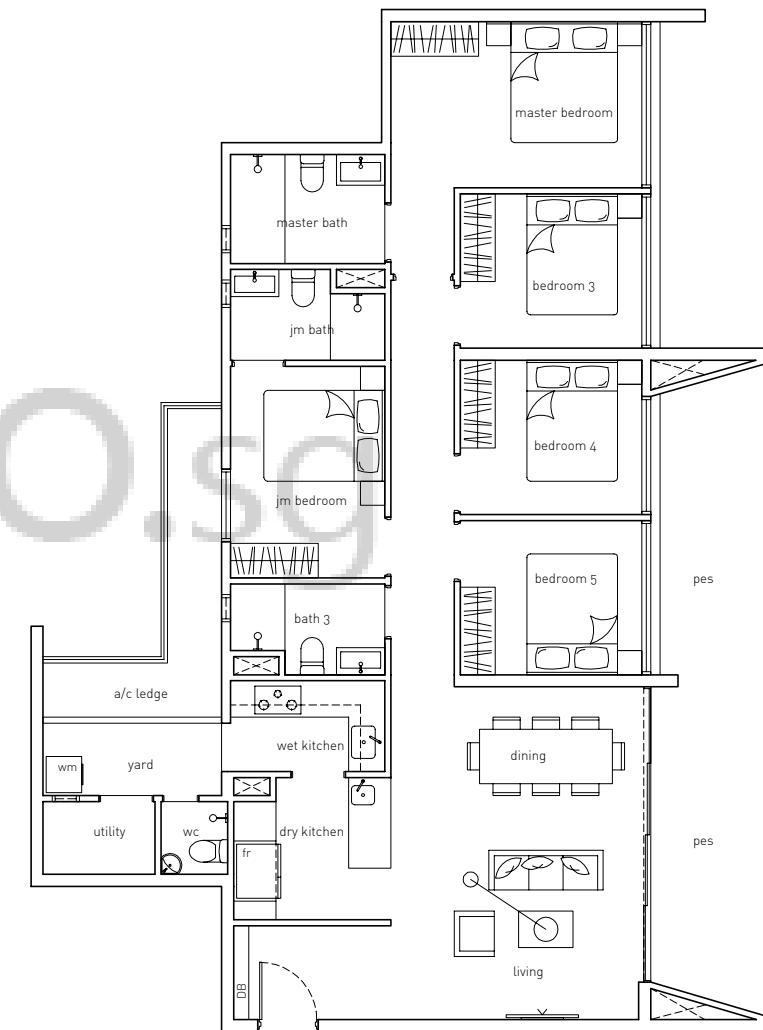
#02-16 to #16-16 (mirrored)  
#02-18 to #16-18



## Type DJg

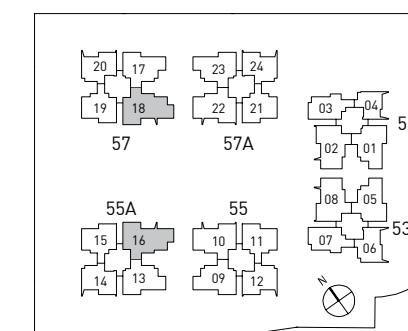
5-Bedroom (Prestige)  
147 sqm / 1582 sqft

#01-16 (mirrored)  
#01-18



Area includes A/C ledge, balcony, PES and void (where applicable). The plans are subject to change as may be required or approved by the relevant authorities. The plans are not drawn to scale and are for purpose of a visual representation of different layouts that are available. All areas are approximate and subject to final survey. The developer and its agent cannot be held liable for inaccuracies.

\* at 1st storey units, PES in lieu of balcony



Area includes A/C ledge, balcony, PES and void (where applicable). The plans are subject to change as may be required or approved by the relevant authorities. The plans are not drawn to scale and are for purpose of a visual representation of different layouts that are available. All areas are approximate and subject to final survey. The developer and its agent cannot be held liable for inaccuracies.

\* at 1st storey units, PES in lieu of balcony