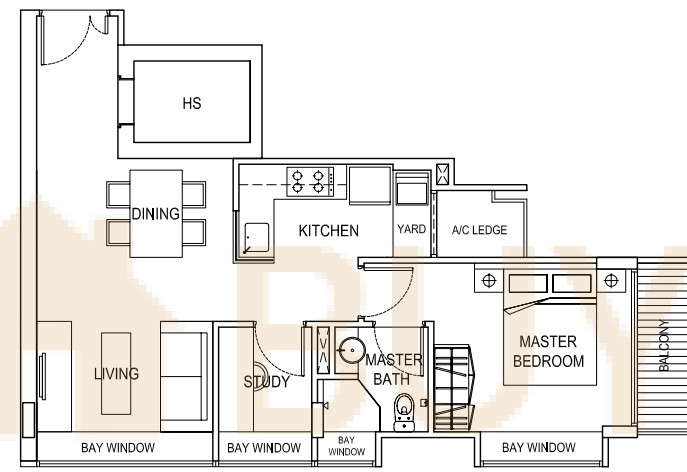
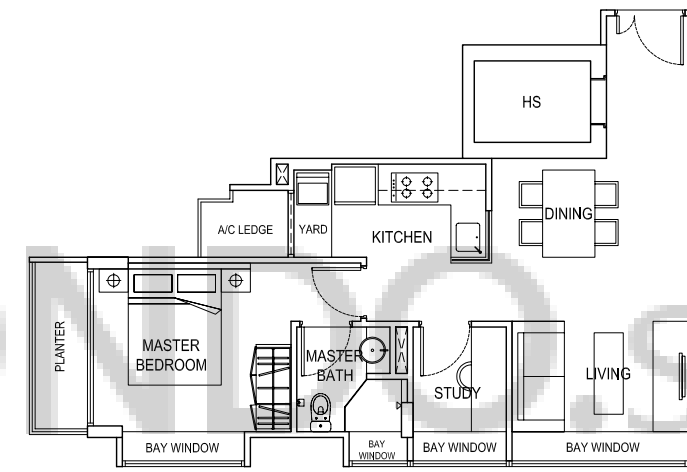


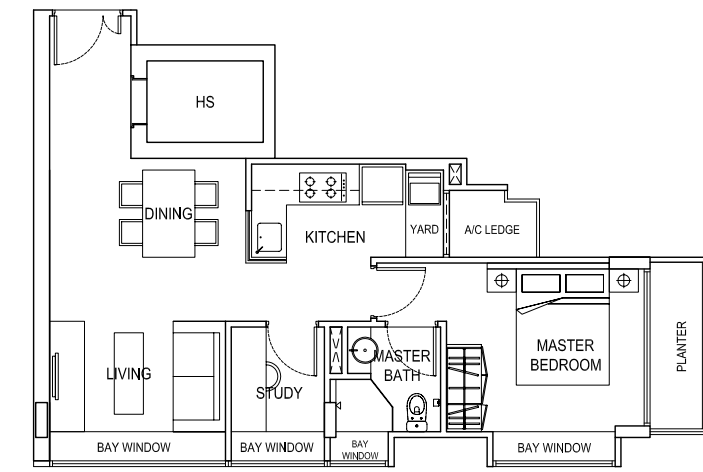
UNIT 03



UNIT 02

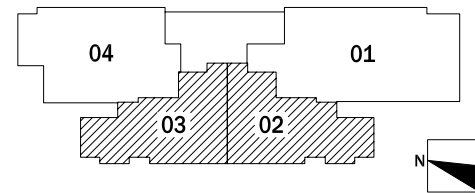


UNIT 03



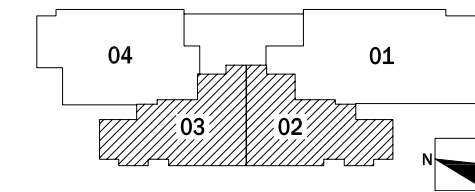
UNIT 02

TYPE B-2 #02-02, #02-03
(60 sqm / 646 sqft)

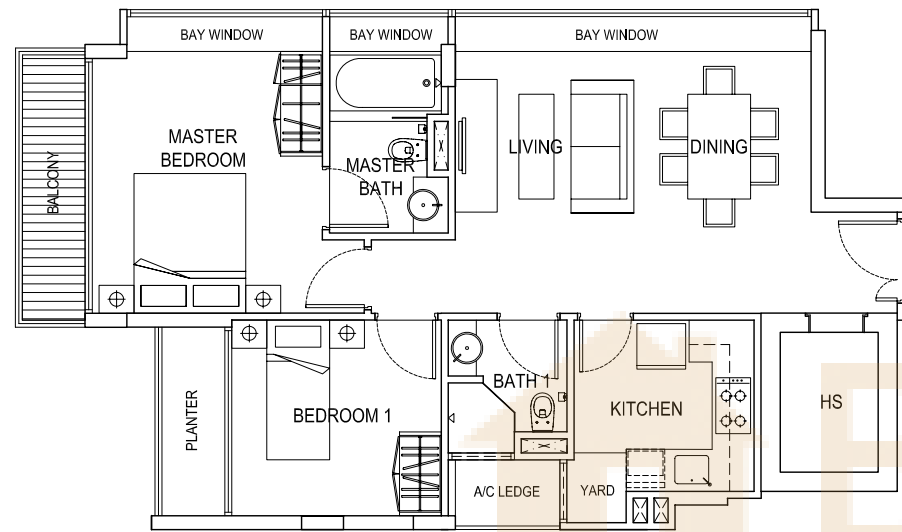


* ALL PES, BALCONIES, PLANTERS & ROOF TERRACE AREAS ARE "NOT TO BE ENCLOSED OR ROOFED OVER".

TYPE B #03-02, #03-03, #04-02, #04-03
(60 sqm / 646 sqft)

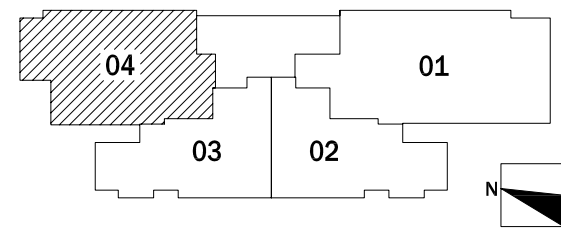


* ALL PES, BALCONIES, PLANTERS & ROOF TERRACE AREAS ARE "NOT TO BE ENCLOSED OR ROOFED OVER".

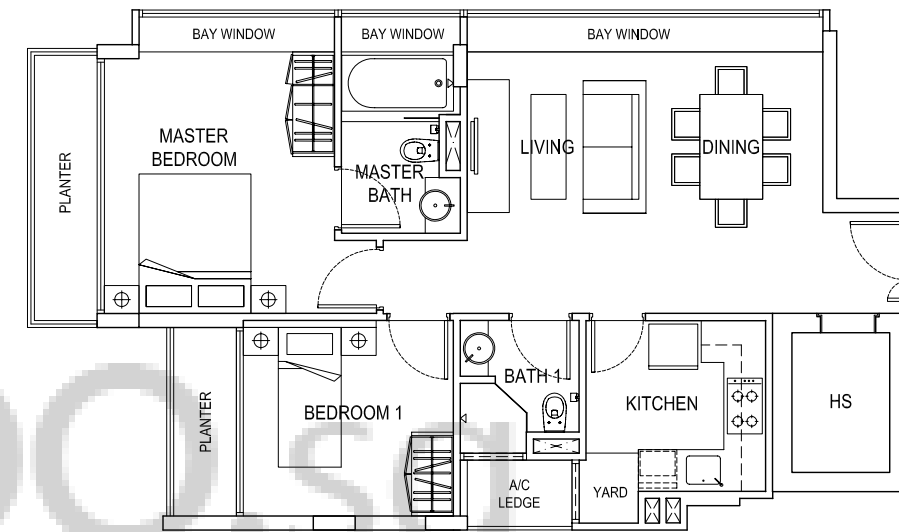


TYPE C-2 #02-04

(80 sqm / 861 sqft)

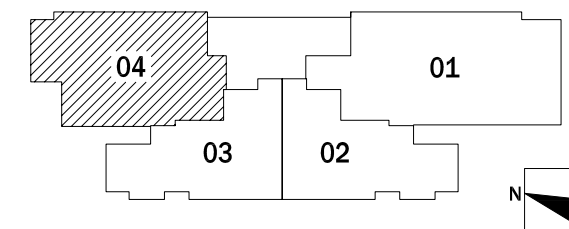


* ALL PES, BALCONIES, PLANTERS & ROOF TERRACE AREAS ARE "NOT TO BE ENCLOSED OR ROOFED OVER".

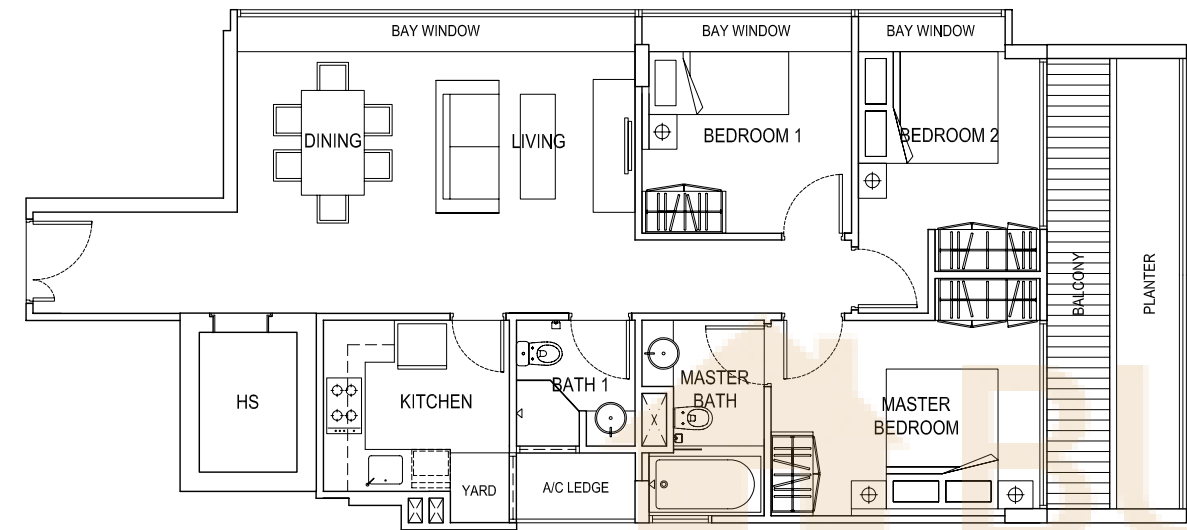


TYPE C #03-04, #04-04

(80 sqm / 861 sqft)

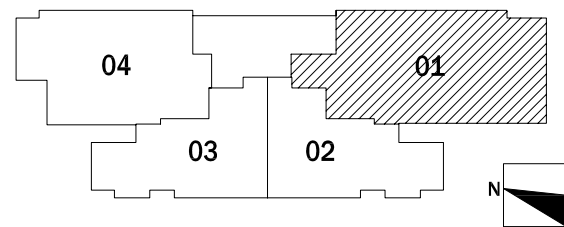


* ALL PES, BALCONIES, PLANTERS & ROOF TERRACE AREAS ARE "NOT TO BE ENCLOSED OR ROOFED OVER".

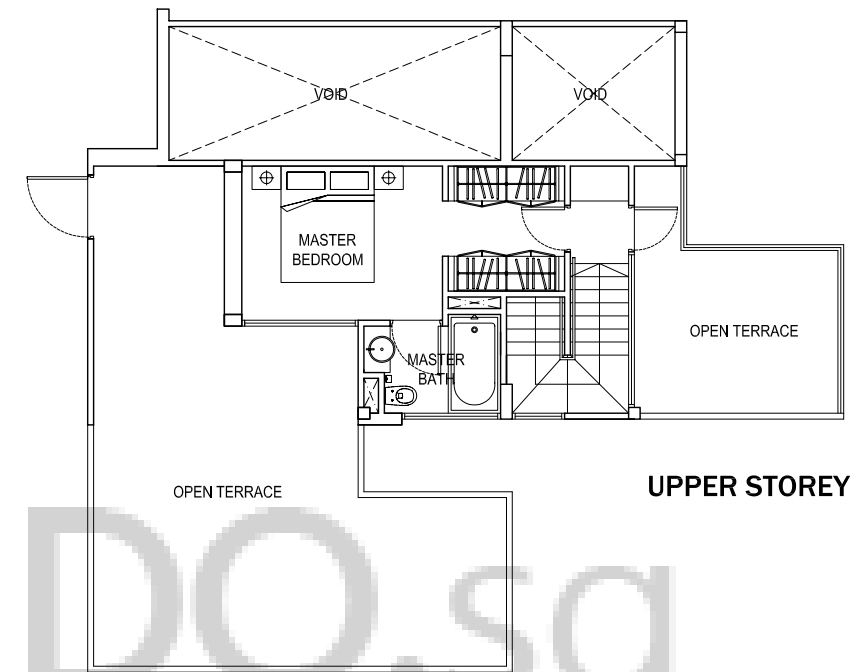


TYPE A #02-01, #03-01, #04-01

(102 sqm / 1098 sqft)

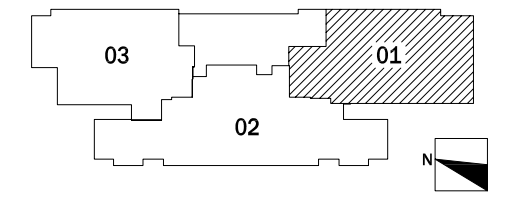


* ALL PES, BALCONIES, PLANTERS & ROOF TERRACE AREAS ARE "NOT TO BE ENCLOSED OR ROOFED OVER".

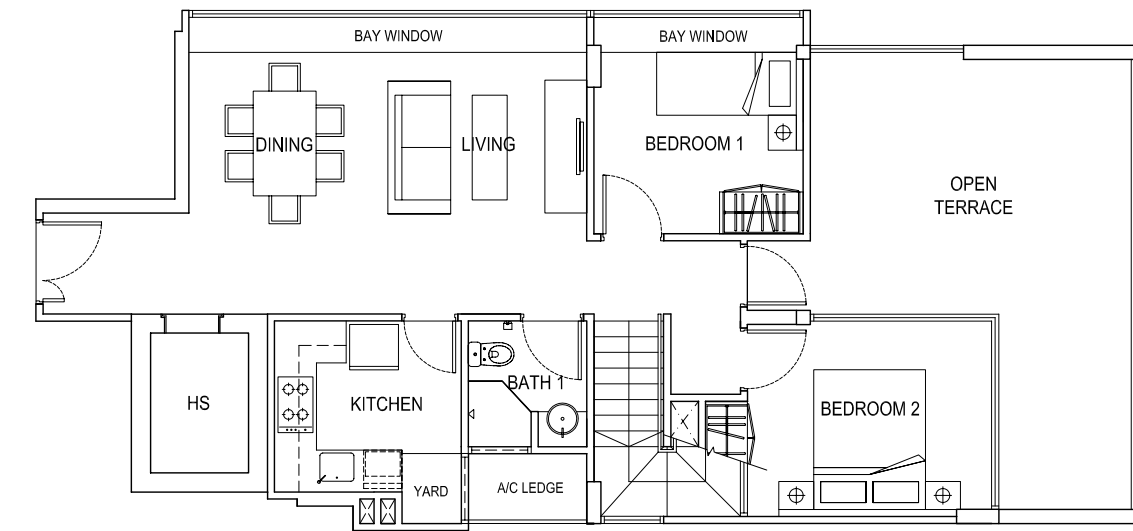


TYPE A-P #05-01

(197 sqm / 2121 sqft)

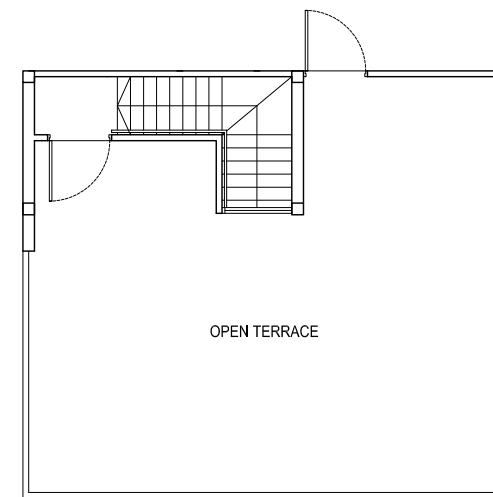


UPPER STOREY



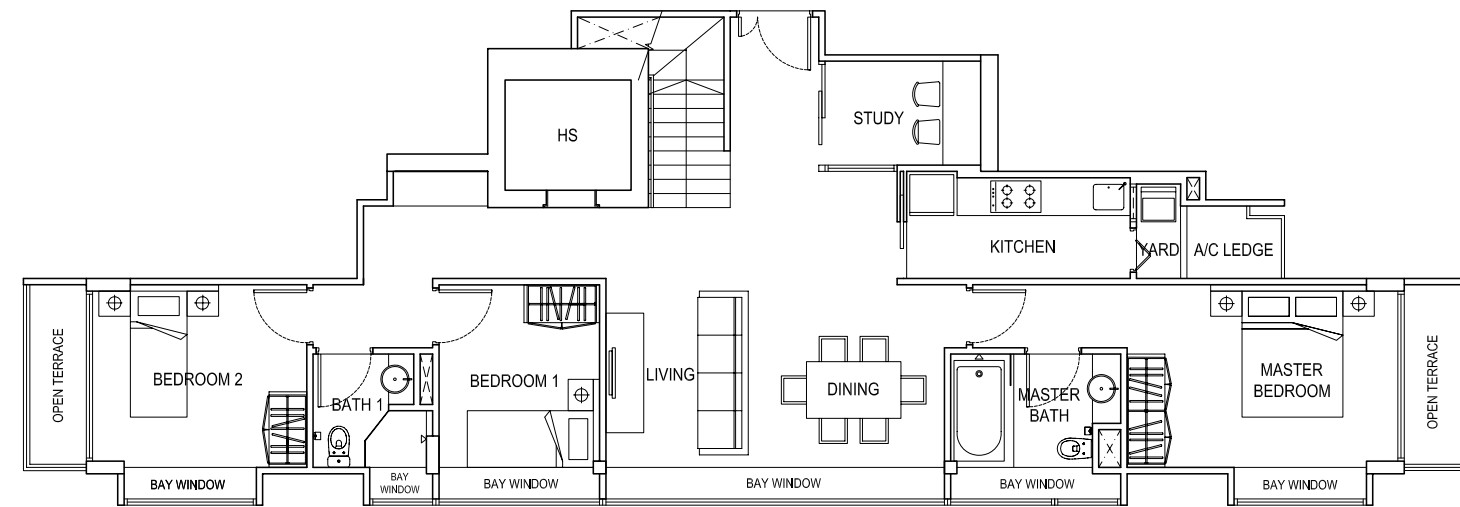
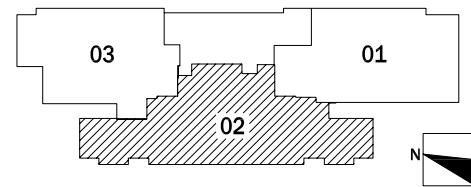
LOWER STOREY

* ALL PES, BALCONIES, PLANTERS & ROOF TERRACE AREAS ARE "NOT TO BE ENCLOSED OR ROOFED OVER".



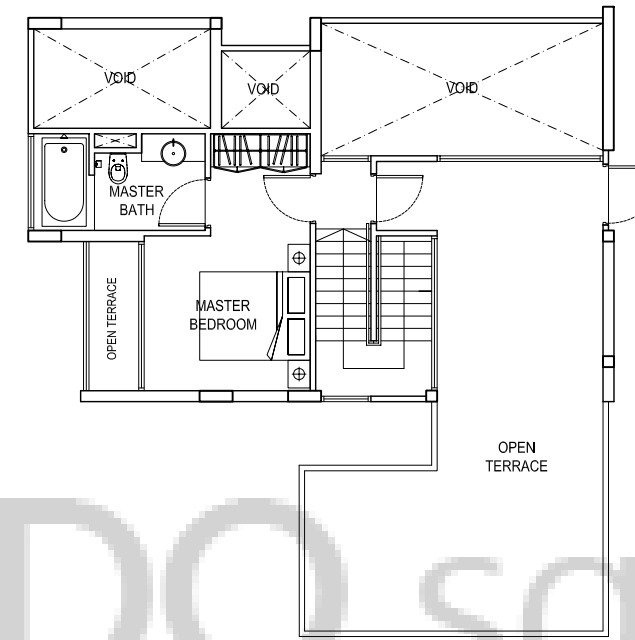
UPPER STOREY

TYPE D #05-02
(171 sqm / 1841 sqft)



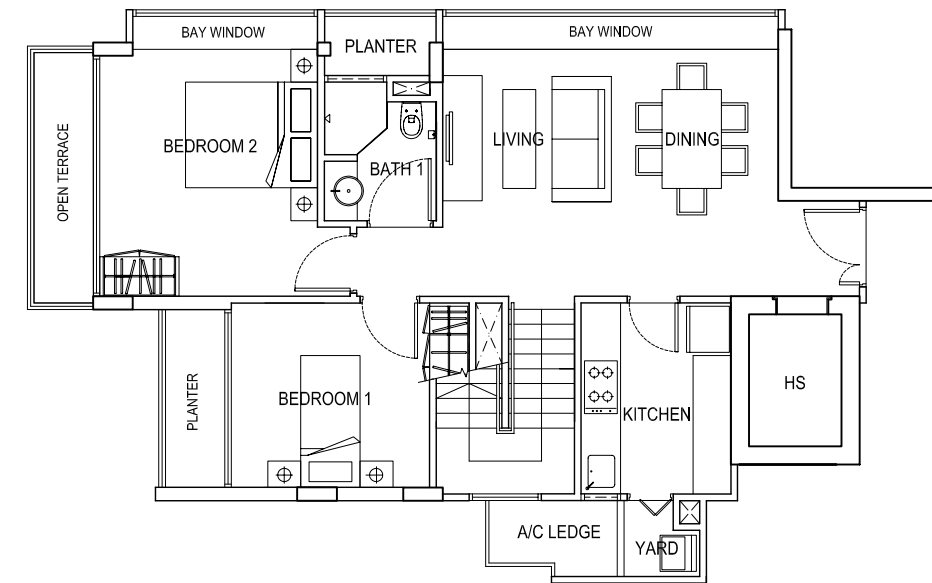
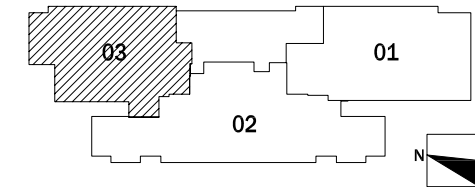
LOWER STOREY

* ALL PES, BALCONIES, PLANTERS & ROOF TERRACE AREAS ARE "NOT TO BE ENCLOSED OR ROOFED OVER".



UPPER STOREY

TYPE C-P #05-03
(164 sqm / 1765 sqft)



LOWER STOREY

* ALL PES, BALCONIES, PLANTERS & ROOF TERRACE AREAS ARE "NOT TO BE ENCLOSED OR ROOFED OVER".

