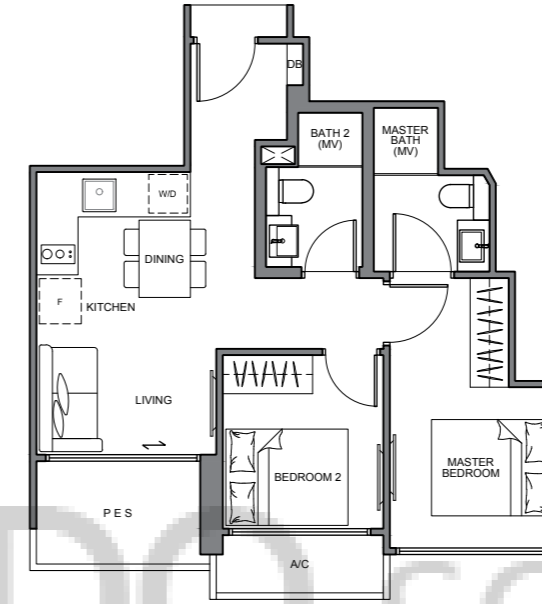


# SCHEMATIC DIAGRAM

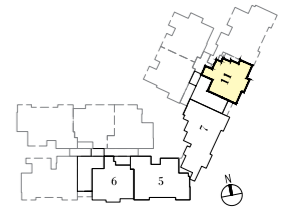
## 2-BEDROOM & 2-BEDROOM + STUDY

Roof	Recreation Facilities										
Level 05	<b>B4</b> 84 sqm	<b>B4a</b> 84 sqm	<b>A2</b> 60 sqm	<b>A4</b> 61 sqm	<b>B2</b> 84 sqm	<b>A3</b> 61 sqm	<b>B3</b> 83 sqm	<b>A5</b> 62 sqm	<b>A5a</b> 62 sqm	<b>B5</b> 86 sqm	<b>A3a</b> 61 sqm
Level 04	<b>B4</b> 84 sqm	<b>B4a</b> 84 sqm	<b>A2</b> 60 sqm	<b>A4</b> 61 sqm	<b>B2</b> 84 sqm	<b>A3</b> 61 sqm	<b>B3</b> 83 sqm	<b>A5</b> 62 sqm	<b>A5a</b> 62 sqm	<b>B5</b> 86 sqm	<b>A3a</b> 61 sqm
Level 03	<b>B4</b> 84 sqm	<b>B4a</b> 84 sqm	<b>A2</b> 60 sqm	<b>A4</b> 61 sqm	<b>B2</b> 84 sqm	<b>A3</b> 61 sqm	<b>B3</b> 83 sqm	<b>A5</b> 62 sqm	<b>A5a</b> 62 sqm	<b>B5</b> 86 sqm	<b>A3a</b> 61 sqm
Level 02	<b>B4</b> 84 sqm	<b>B4a</b> 84 sqm	<b>A2</b> 60 sqm	<b>A4</b> 61 sqm	<b>B2</b> 84 sqm	<b>A3</b> 61 sqm	<b>B3</b> 83 sqm	<b>A5</b> 62 sqm	<b>A5a</b> 62 sqm	<b>B5</b> 86 sqm	<b>A3a</b> 61 sqm
Level 01					<b>B2-G</b> 84 sqm	<b>A3-G</b> 60 sqm	<b>B1-G</b> 83 sqm				<b>A1-G</b> 56 sqm
Unit	1	2	3	4	5	6	7	8	9	10	11



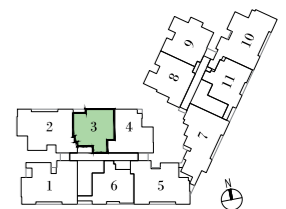
**TYPE A1-G**  
56 sqm

178 Jalan Eunus #01-11



**TYPE A2**  
60 sqm

178 Jalan Eunus #02-03  
#03-03  
#04-03  
#05-03

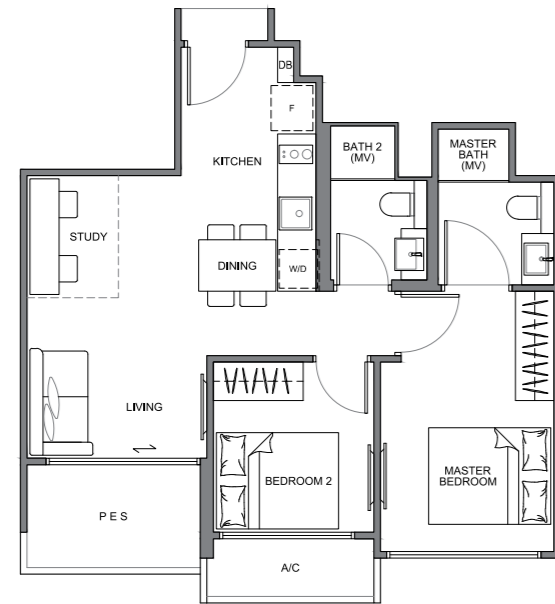


- 2-BEDROOM
- 2-BEDROOM + STUDY
- 2-BEDROOM + GUEST ROOM
- 3-BEDROOM + GUEST ROOM



All plans are subject to amendments as approved by the relevant authorities. Floor areas are approximate measurements and subject to final survey. Plans are not drawn to scale and do not form part of the contract.

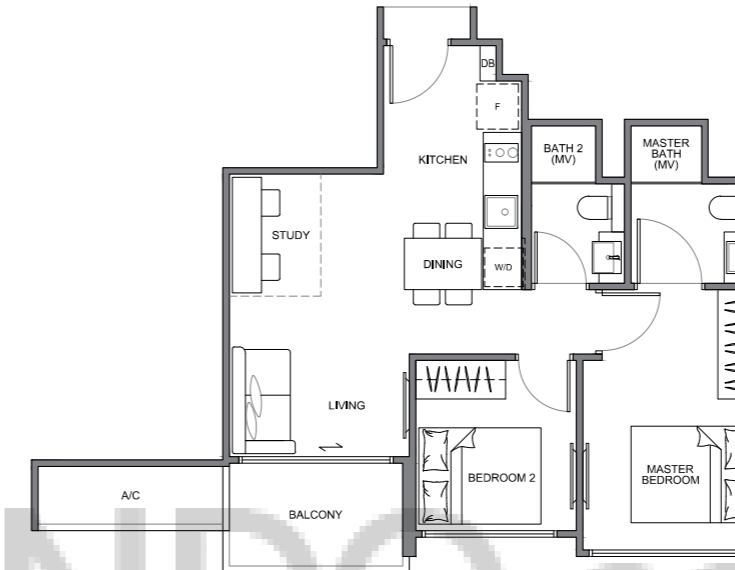
## 2-BEDROOM + STUDY



**TYPE A3-G**  
60 sqm

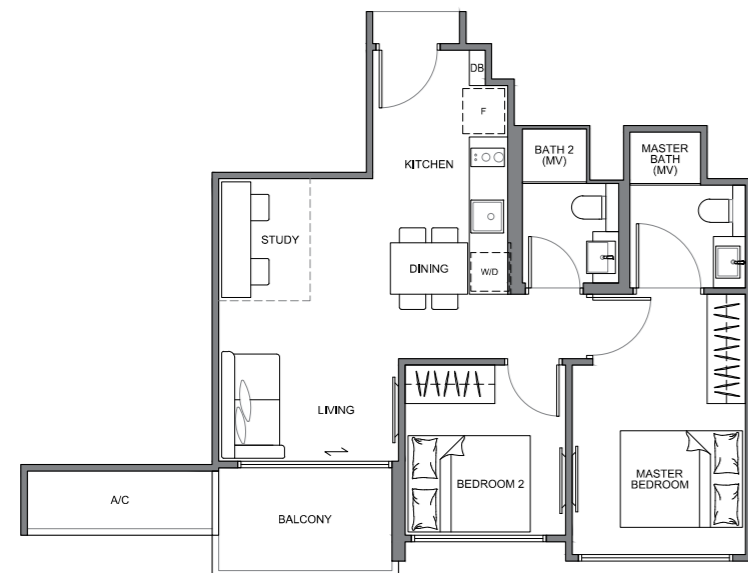
178 Jalan Eunus #01-06

## 2-BEDROOM + STUDY



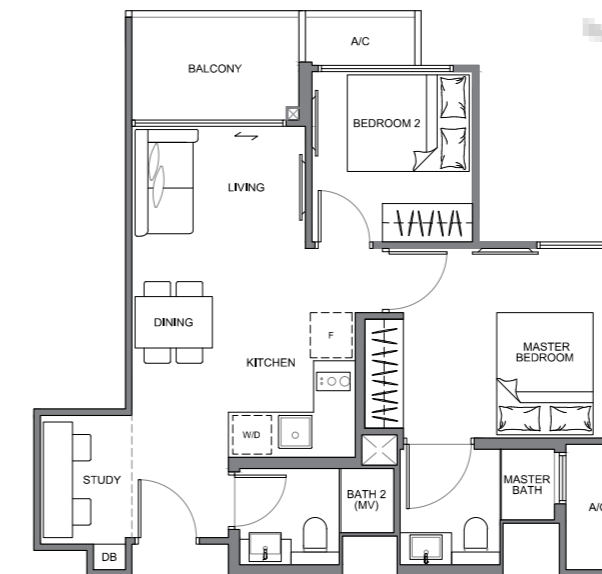
**TYPE A3a**  
61 sqm

178 Jalan Eunus #02-11  
#03-11  
#04-11  
#05-11



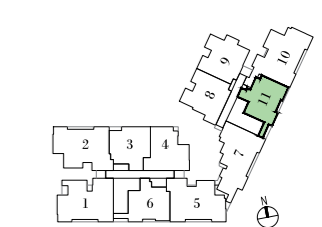
**TYPE A3**  
61 sqm

178 Jalan Eunus #02-06  
#03-06  
#04-06  
#05-06

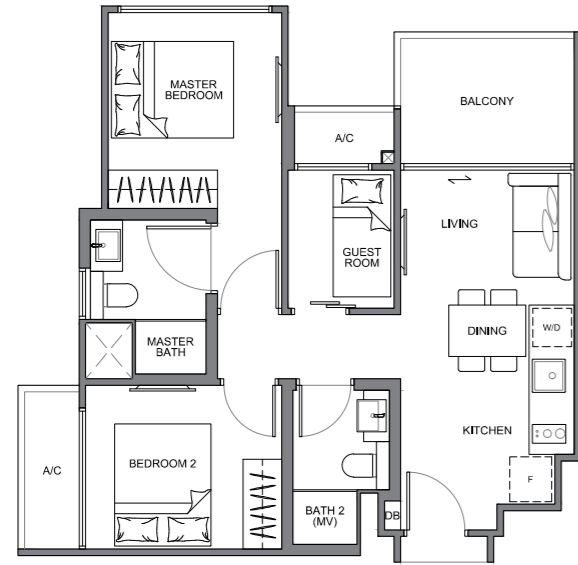


**TYPE A4**  
61 sqm

178 Jalan Eunus #02-04  
#03-04  
#04-04  
#05-04

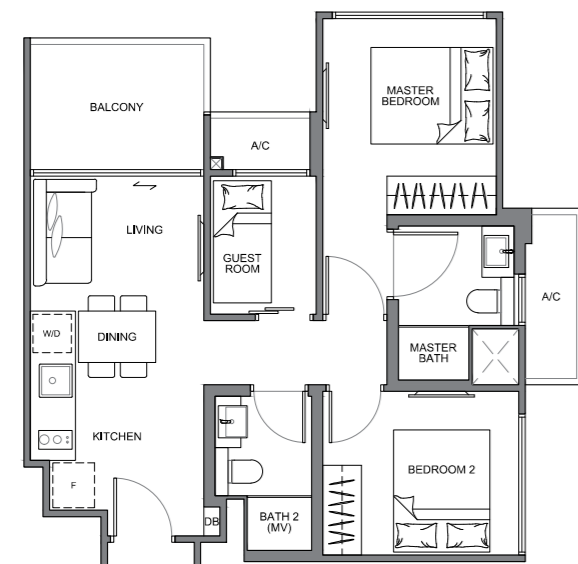


## 2-BEDROOM + GUEST ROOM



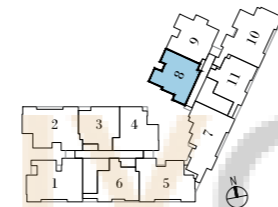
**TYPE A5**  
62 sqm

178 Jalan Eunus #02-08  
#03-08  
#04-08  
#05-08



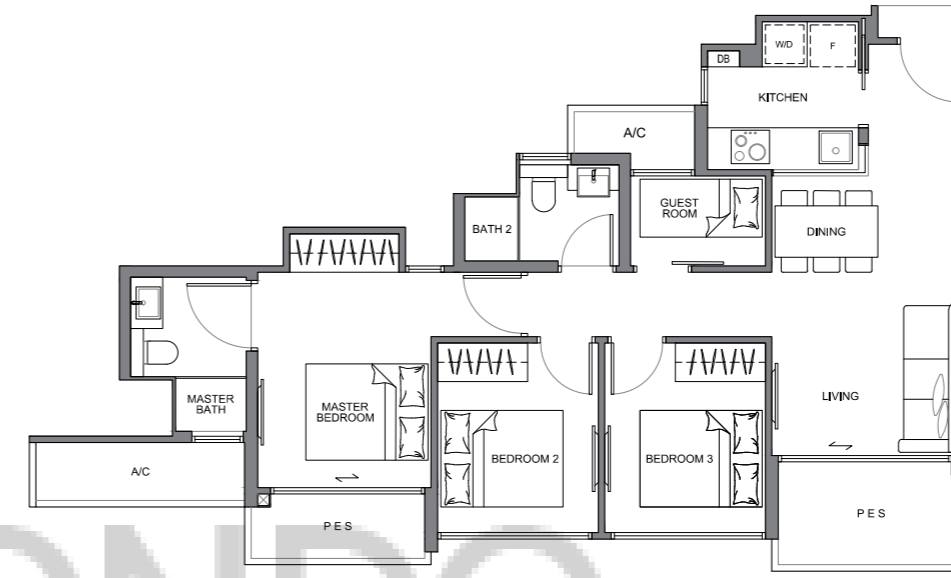
**TYPE A5a**  
62 sqm

178 Jalan Eunus #02-09  
#03-09  
#04-09  
#05-09



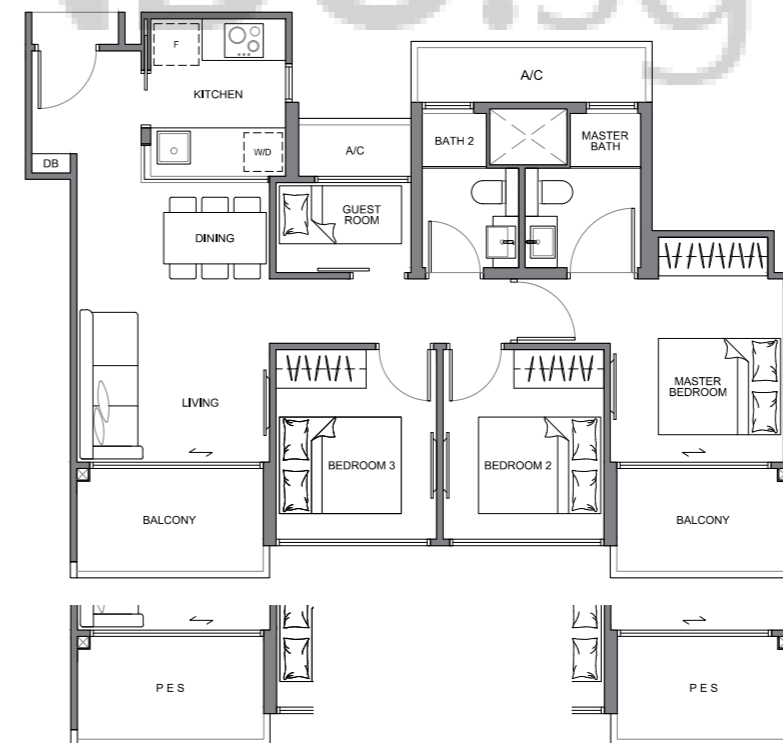
All plans are subject to amendments as approved by the relevant authorities. Floor areas are approximate measurements and subject to final survey. Plans are not drawn to scale and do not form part of the contract.

## 3-BEDROOM + GUEST ROOM



**TYPE B1-G**  
83 sqm

178 Jalan Eunus #01-07

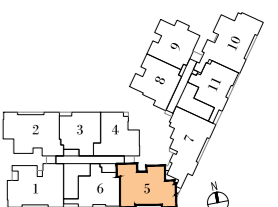
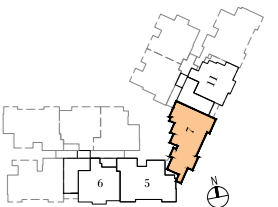


**TYPE B2**  
84 sqm

178 Jalan Eunus #02-05  
#03-05  
#04-05  
#05-05

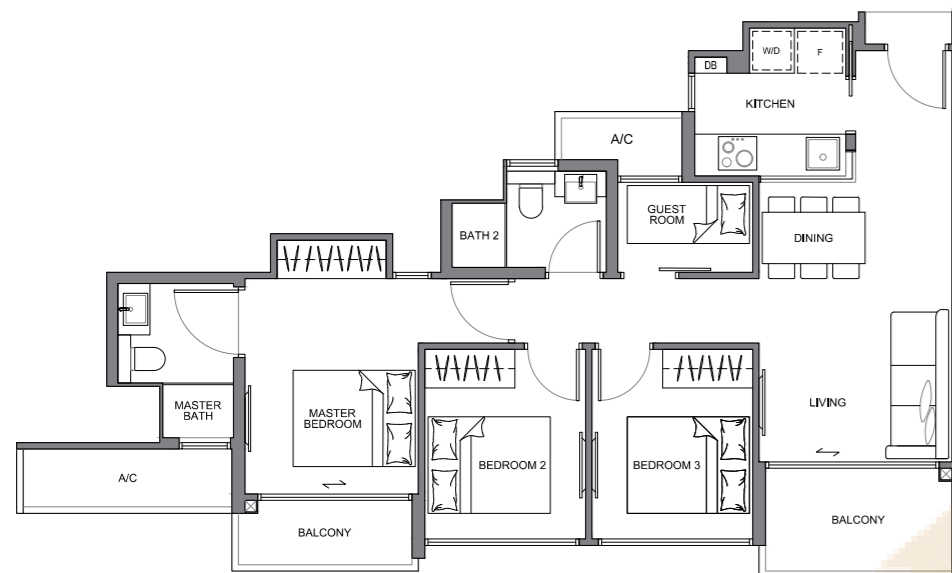
**TYPE B2-G**  
84 sqm

178 Jalan Eunus #01-05



All plans are subject to amendments as approved by the relevant authorities. Floor areas are approximate measurements and subject to final survey. Plans are not drawn to scale and do not form part of the contract.

### 3-BEDROOM + GUEST ROOM

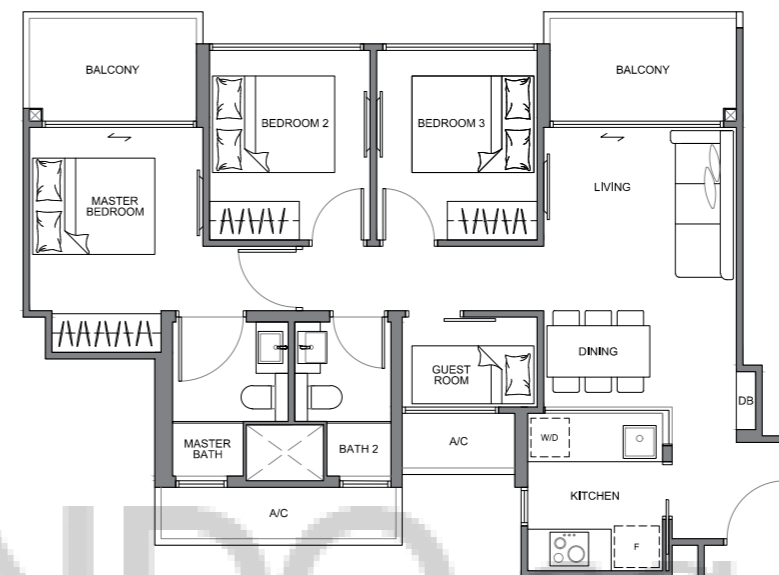


**TYPE B3**  
83 sqm

178 Jalan Eunus #02-07  
#03-07  
#04-07  
#05-07

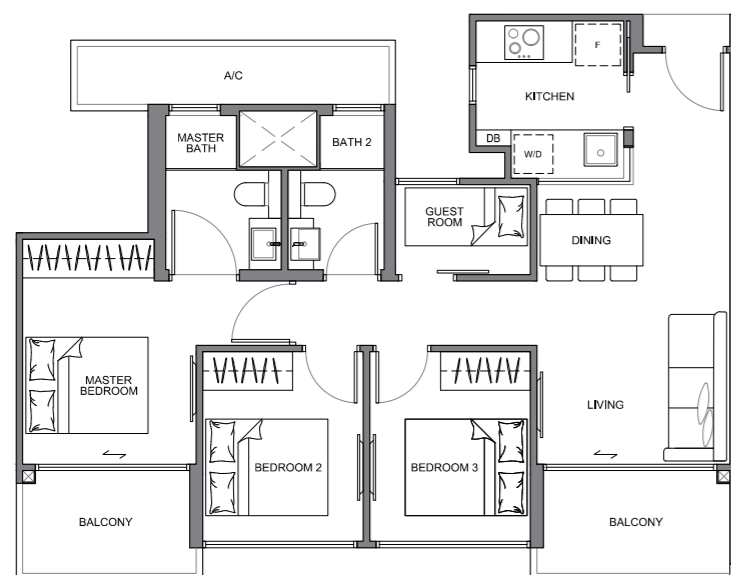
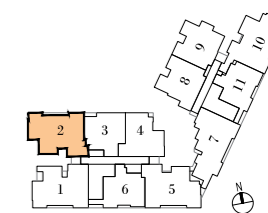


### 3-BEDROOM + GUEST ROOM



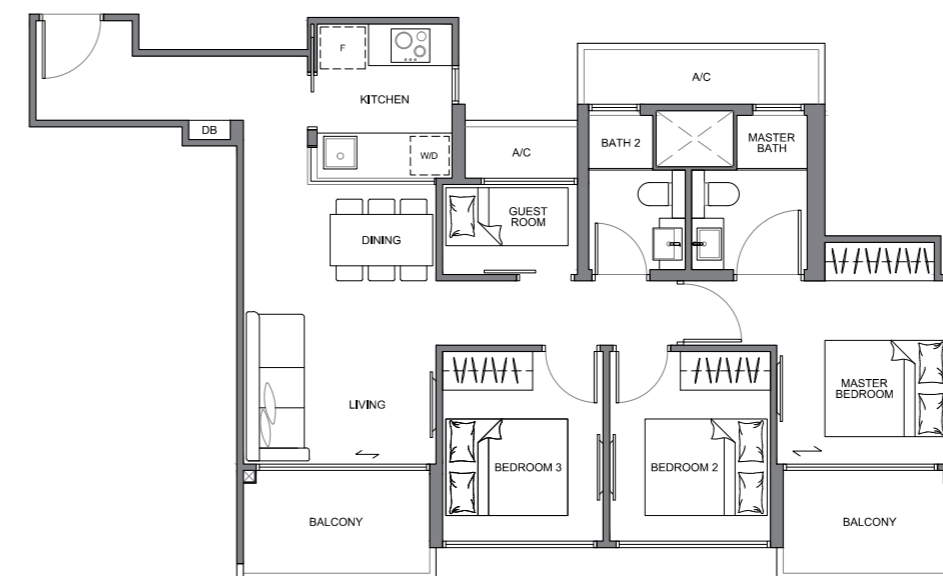
**TYPE B4a**  
84 sqm

178 Jalan Eunus #02-02  
#03-02  
#04-02  
#05-02



**TYPE B4**  
84 sqm

178 Jalan Eunus #02-01  
#03-01  
#04-01  
#05-01

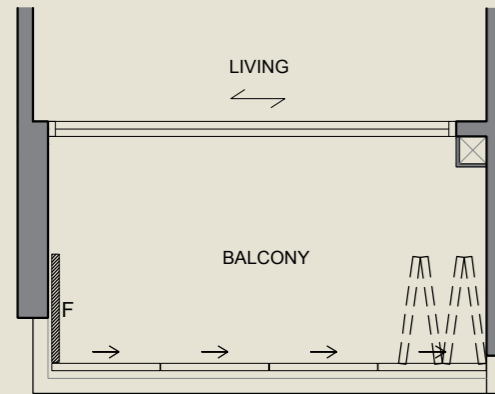


**TYPE B5**  
86 sqm

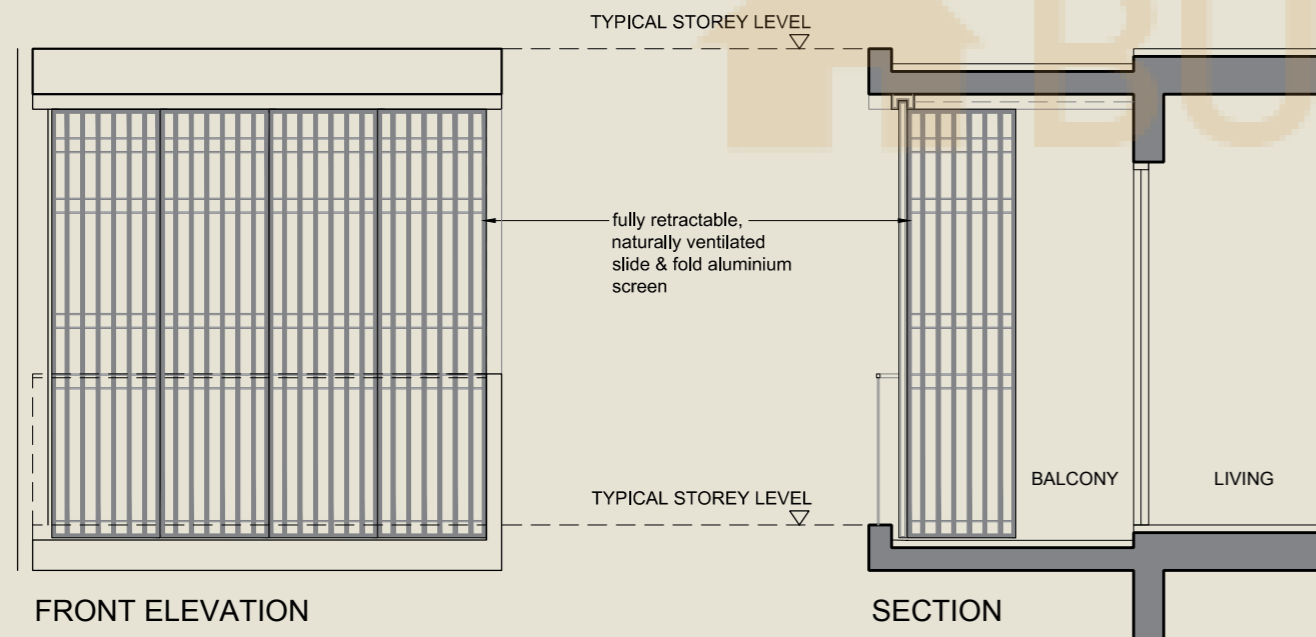
178 Jalan Eunus #02-10  
#03-10  
#04-10  
#05-10



# BALCONY SCREENING



PLAN



FRONT ELEVATION

SECTION

This drawing is for reference only. The screen design is provided for aesthetic uniformity of the development. Materials to be aluminium with powder coated finish. Fixing details are by contractor, and fixing shall not damage the existing waterproofing and structure. Owner shall verify all dimensions prior to fabrication and commencement of work. Drawings are not to scale. The cost of screen and installation shall be borne by the owner.

## A PREMIER DEVELOPMENT BY ROXY-PACIFIC HOLDINGS LIMITED.

SINGAPORE



STRAITS MANSIONS  
A freehold Peranakan heirloom



LIV ON WILKIE  
The exclusive world of glamour



EON SHENTON  
City living at your doorstep

OVERSEAS



WISMA INFINITEM, MALAYSIA  
Residence · Retail · Club



WEST END RESIDENCES, AUSTRALIA  
A collection of unique apartments and  
terrace homes in the heart of Glebe

Roxy-Pacific Holdings Limited is an established property and hospitality group with an Asia-Pacific focus and a track record that extends back to May 1967. Listed on the SGX Mainboard on 12 March 2008, the group is principally engaged in the development and sale of residential and commercial properties ("Property Development"), the ownership of Grand Mercure Roxy Hotel and other investment properties ("Hotel Ownership and Property Investments"). Since 2013, the three main arms - Property Development, Property Investment and Hotel Ownership have extended their reach beyond Singapore, to countries such as Malaysia, Australia, Thailand, Japan and Maldives.