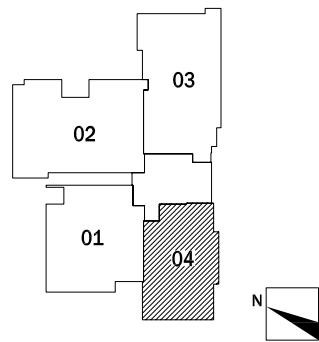
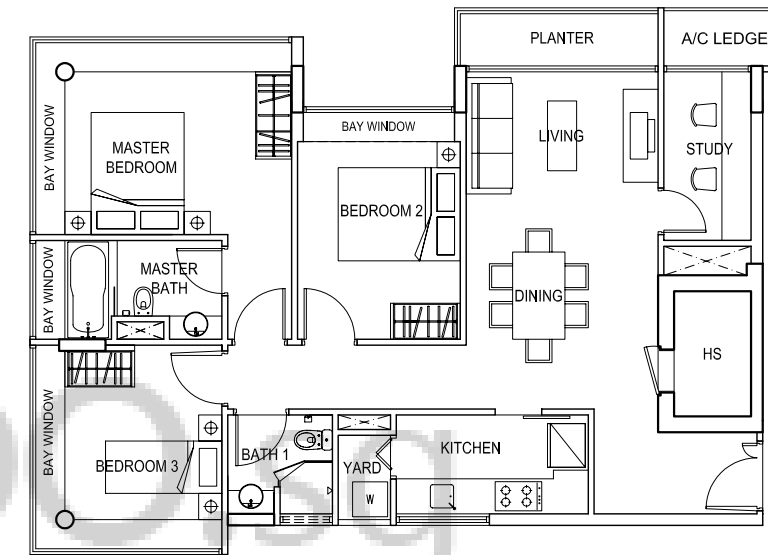


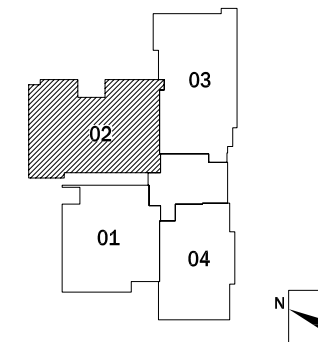
TYPE A #02-04, #03-04, #04-04
(72 sqm / 775 sqft)



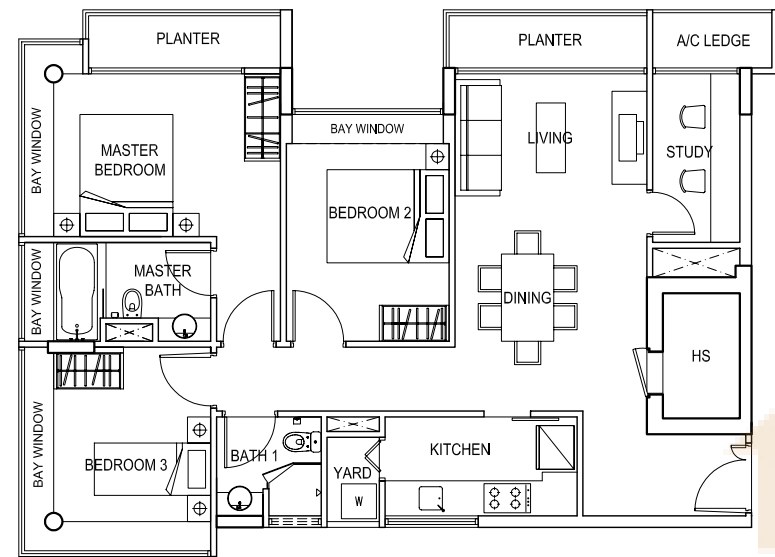
* ALL PES, BALCONIES, PLANTERS & ROOF TERRACE AREAS ARE "NOT TO BE ENCLOSED OR ROOFED OVER".



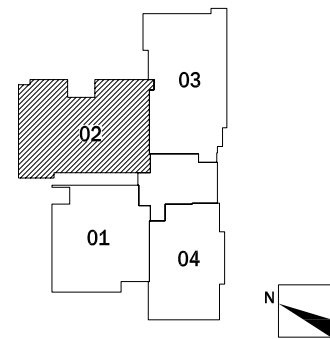
TYPE C #03-02, #04-02
(102 sqm / 1098 sqft)



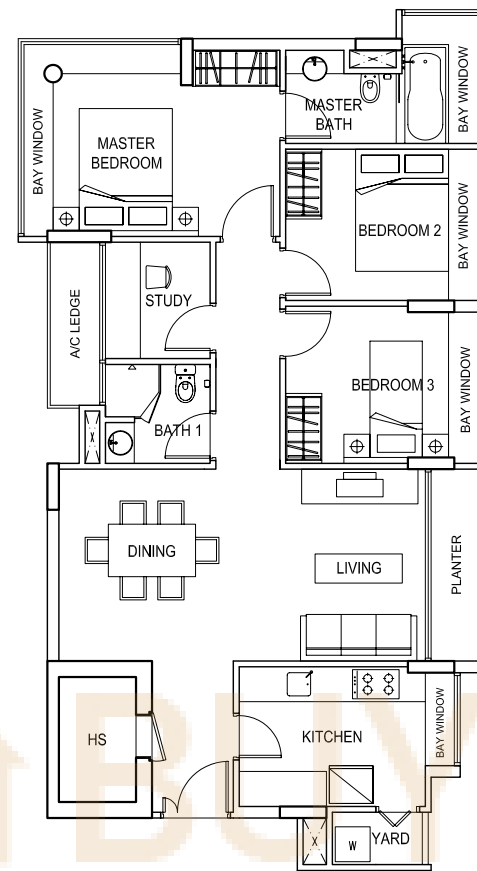
* ALL PES, BALCONIES, PLANTERS & ROOF TERRACE AREAS ARE "NOT TO BE ENCLOSED OR ROOFED OVER".



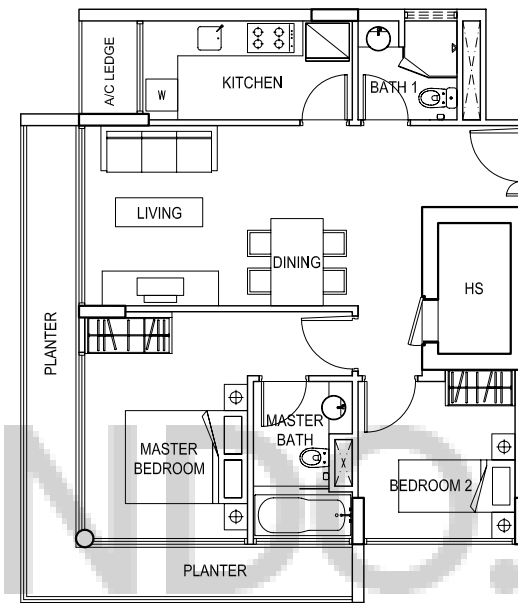
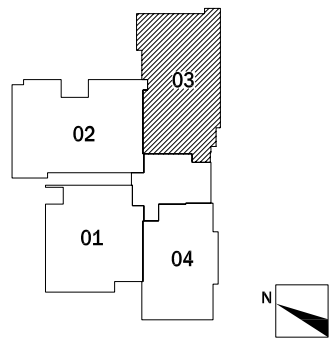
TYPE C-2 #02-02
(104 sqm / 1119 sqft)



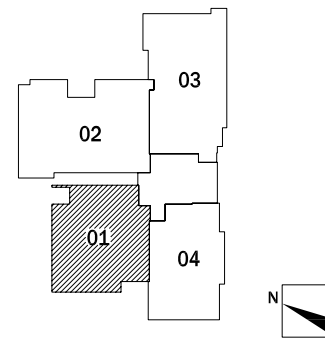
* ALL PES, BALCONIES, PLANTERS & ROOF TERRACE AREAS ARE "NOT TO BE ENCLOSED OR ROOFED OVER".



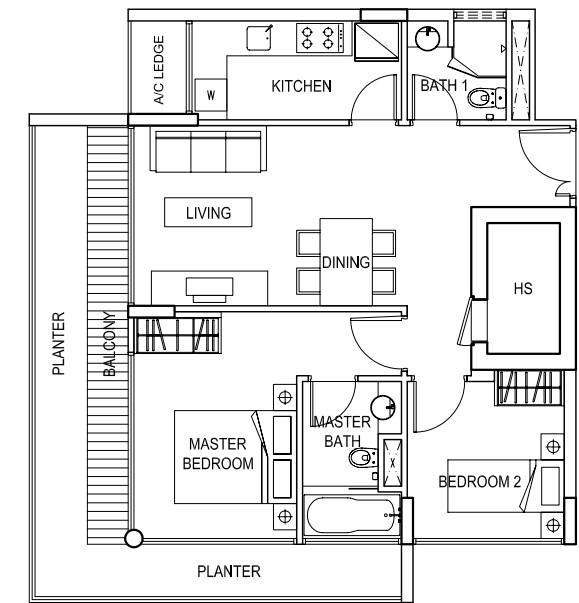
TYPE D #02-03, #03-03, #04-03
(99 sqm / 1066 sqft)



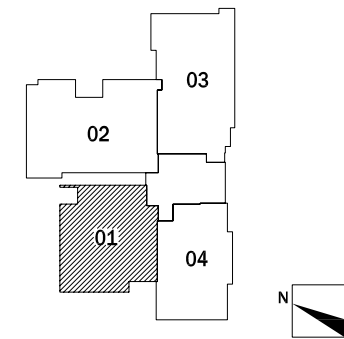
TYPE B #03-01, #04-01
(79 sqm / 850 sqft)

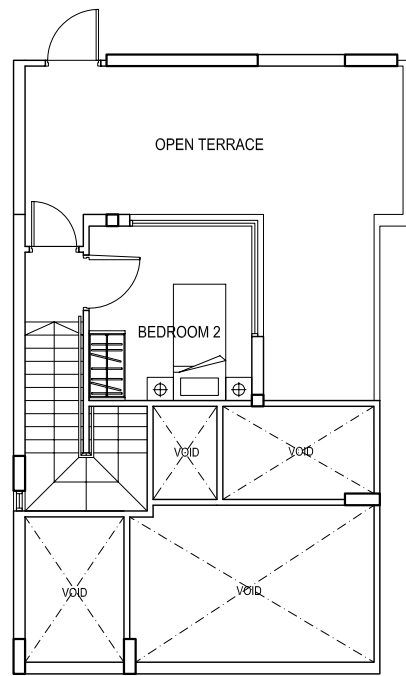


* ALL PES, BALCONIES, PLANTERS & ROOF TERRACE AREAS ARE "NOT TO BE ENCLOSED OR ROOFED OVER".

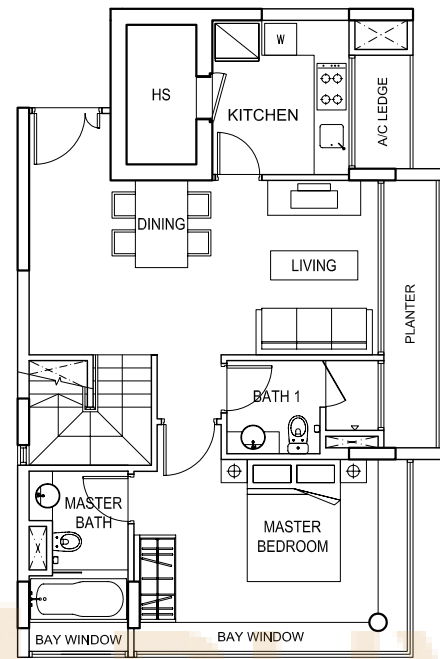


TYPE B-2 #02-01
(85 sqm / 915 sqft)

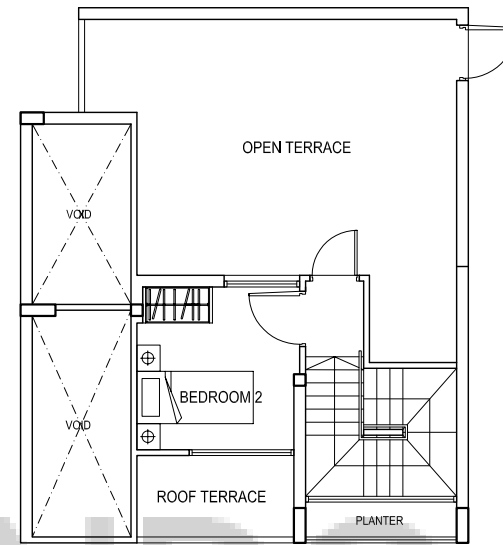




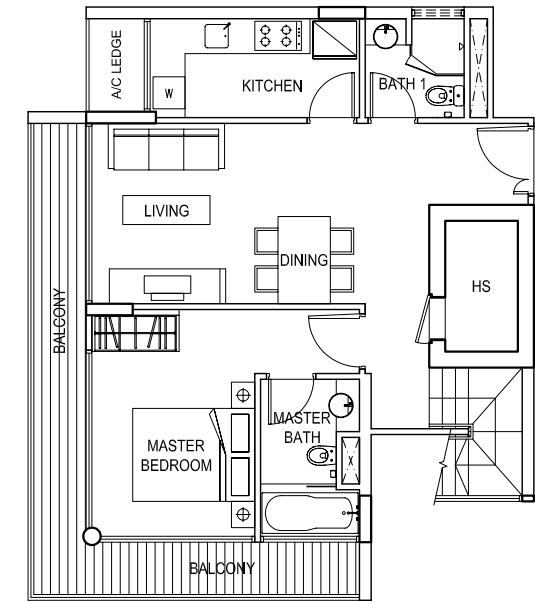
UPPER STOREY



LOWER STOREY

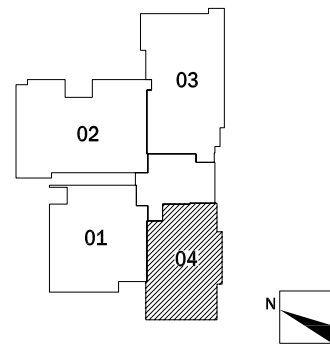


UPPER STOREY



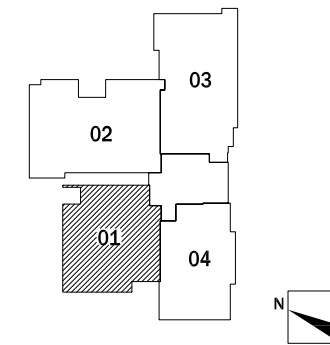
LOWER STOREY

TYPE A-P #05-04
(123 sqm / 1324 sqft)



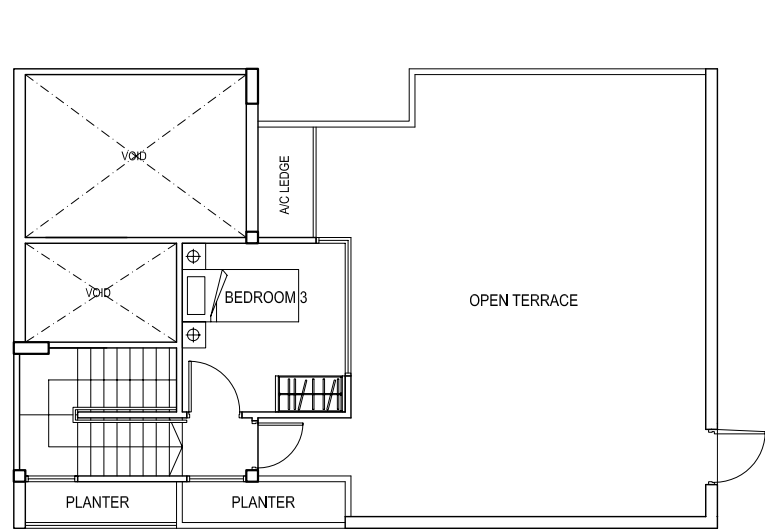
* ALL PES, BALCONIES, PLANTERS & ROOF TERRACE AREAS ARE "NOT TO BE ENCLOSED OR ROOFED OVER".

TYPE B-P #05-01
(138 sqm / 1485 sqft)

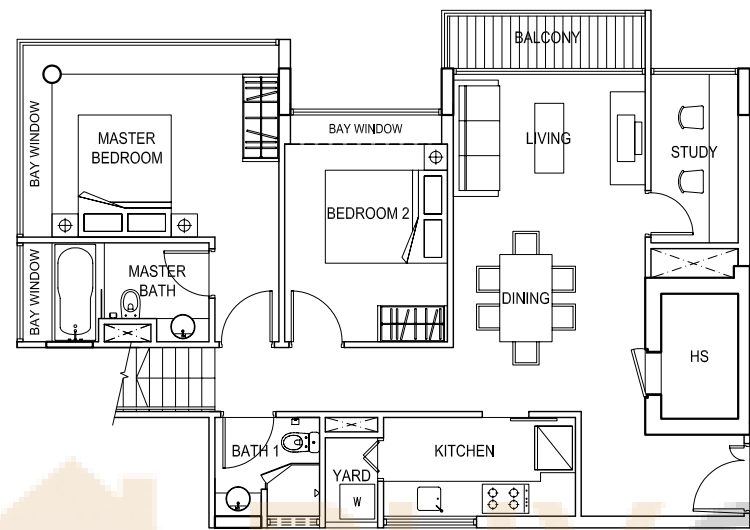


* ALL PES, BALCONIES, PLANTERS & ROOF TERRACE AREAS ARE "NOT TO BE ENCLOSED OR ROOFED OVER".

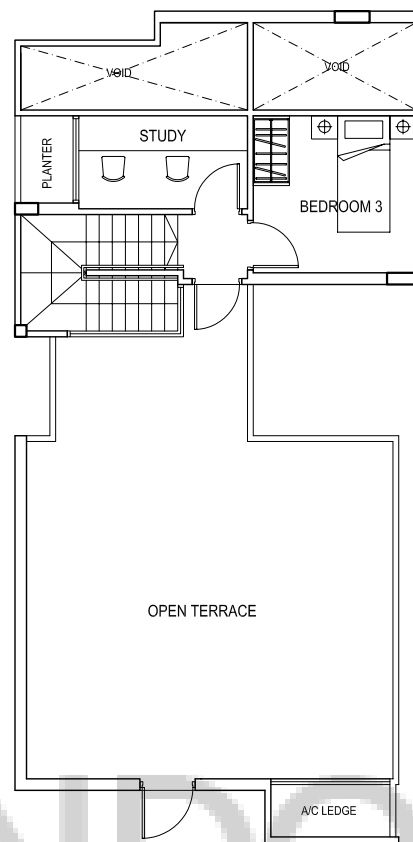




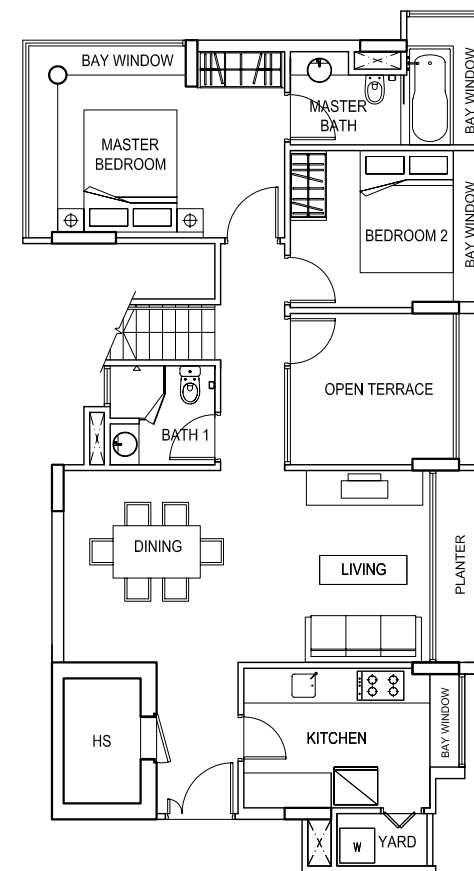
UPPER STOREY



LOWER STOREY

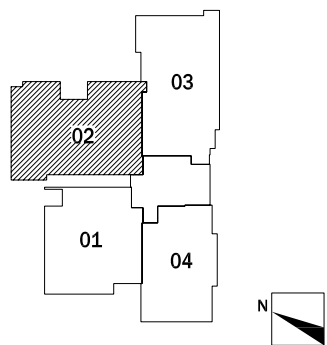


UPPER STOREY



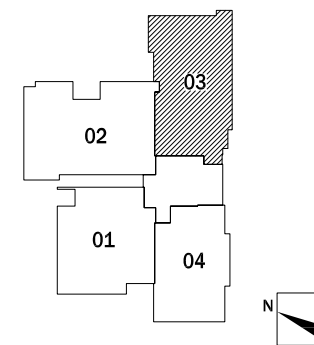
LOWER STOREY

TYPE C-P #05-02
(174 sqm / 1873 sqft)



* ALL PES, BALCONIES, PLANTERS & ROOF TERRACE AREAS ARE "NOT TO BE ENCLOSED OR ROOFED OVER".

TYPE D-P #05-03
(167 sqm / 1798 sqft)



* ALL PES, BALCONIES, PLANTERS & ROOF TERRACE AREAS ARE "NOT TO BE ENCLOSED OR ROOFED OVER".

