

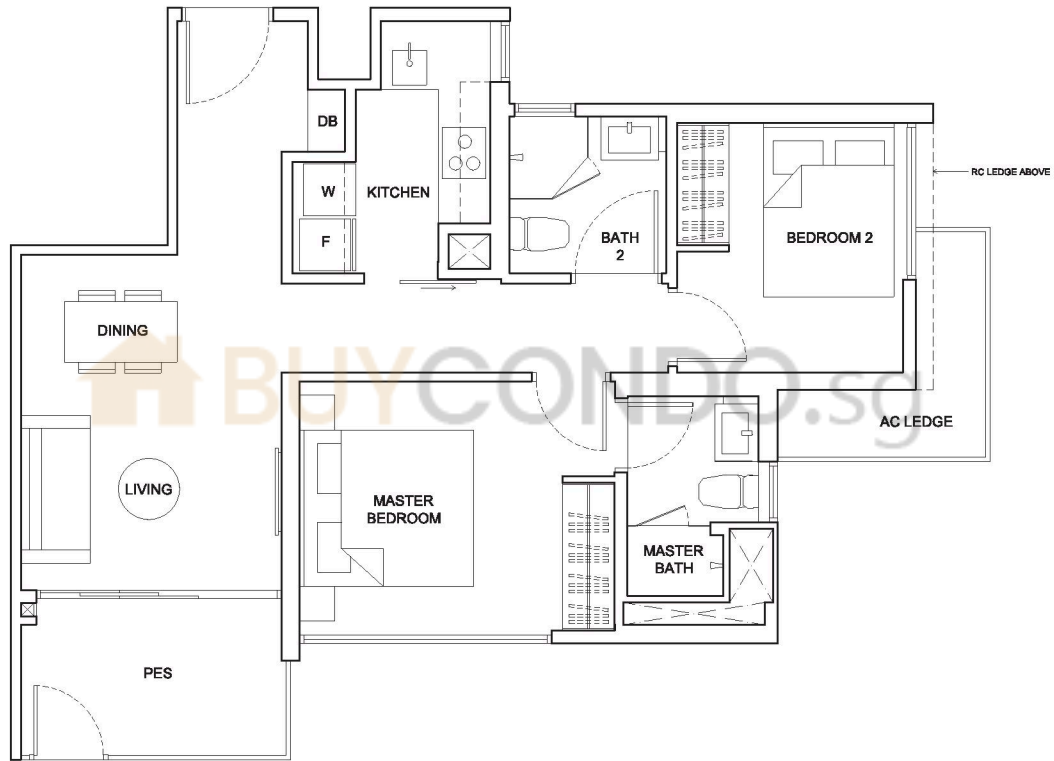
TYPE A1P



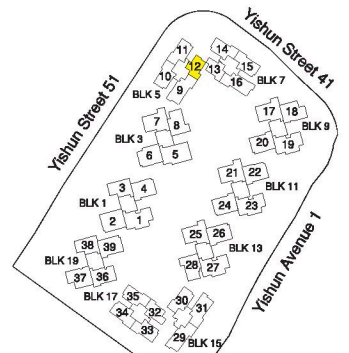
2-BEDROOM

66sq m (710sq ft)

BLK 5
#01-12



Area includes air-con (AC) ledge, private enclosed space (PES) and void area where applicable. Some units are mirror images of the apartment plans shown in the brochure. Please refer to the key plan for orientation. The plans are subject to change as may be approved by relevant authorities. All floor plans are approximate measurements only and are subject to government resurvey.



Keyplan is not drawn to scale

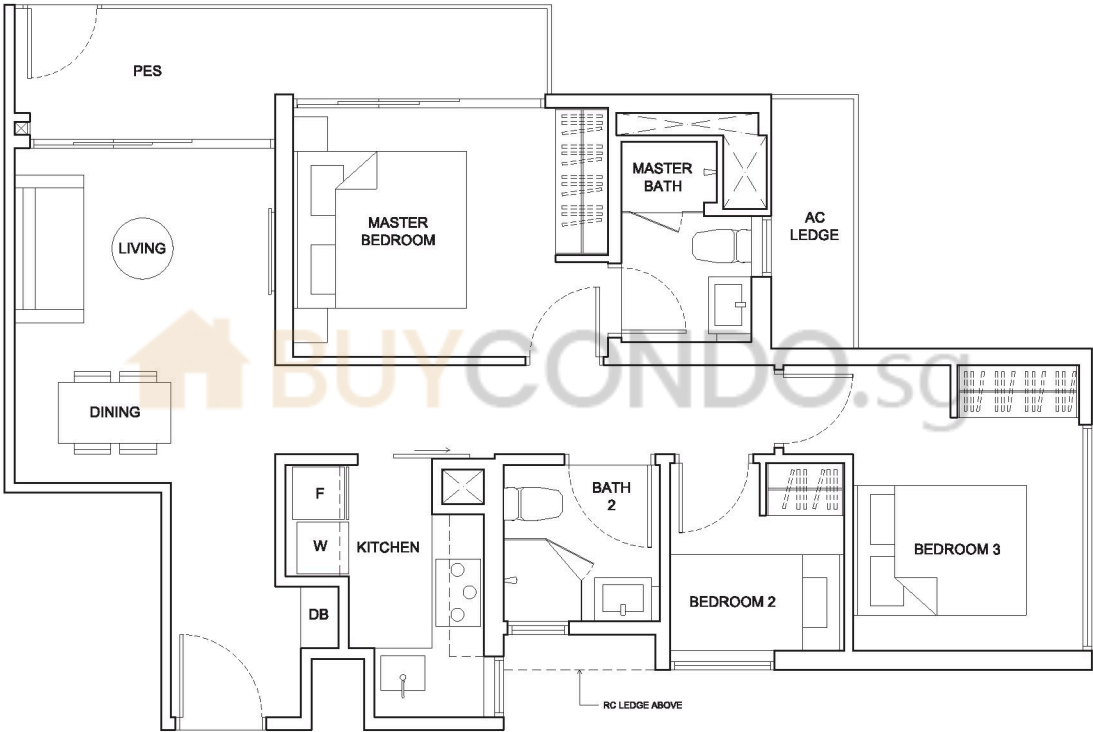


3-BEDROOM

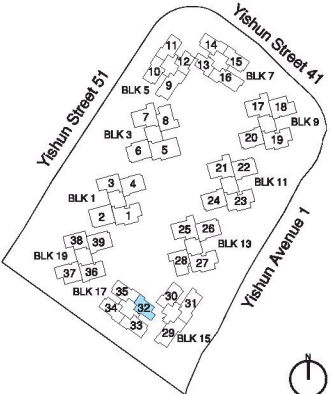
76sq m (818sq ft)

BLK 17
#01-32

TYPE B1P



Area includes air-con (AC) ledge, private enclosed space (PES) and void area where applicable. Some units are mirror images of the apartment plans shown in the brochure. Please refer to the key plan for orientation. The plans are subject to change as may be approved by relevant authorities. All floor plans are approximate measurements only and are subject to government resurvey.



Keyplan is not drawn to scale

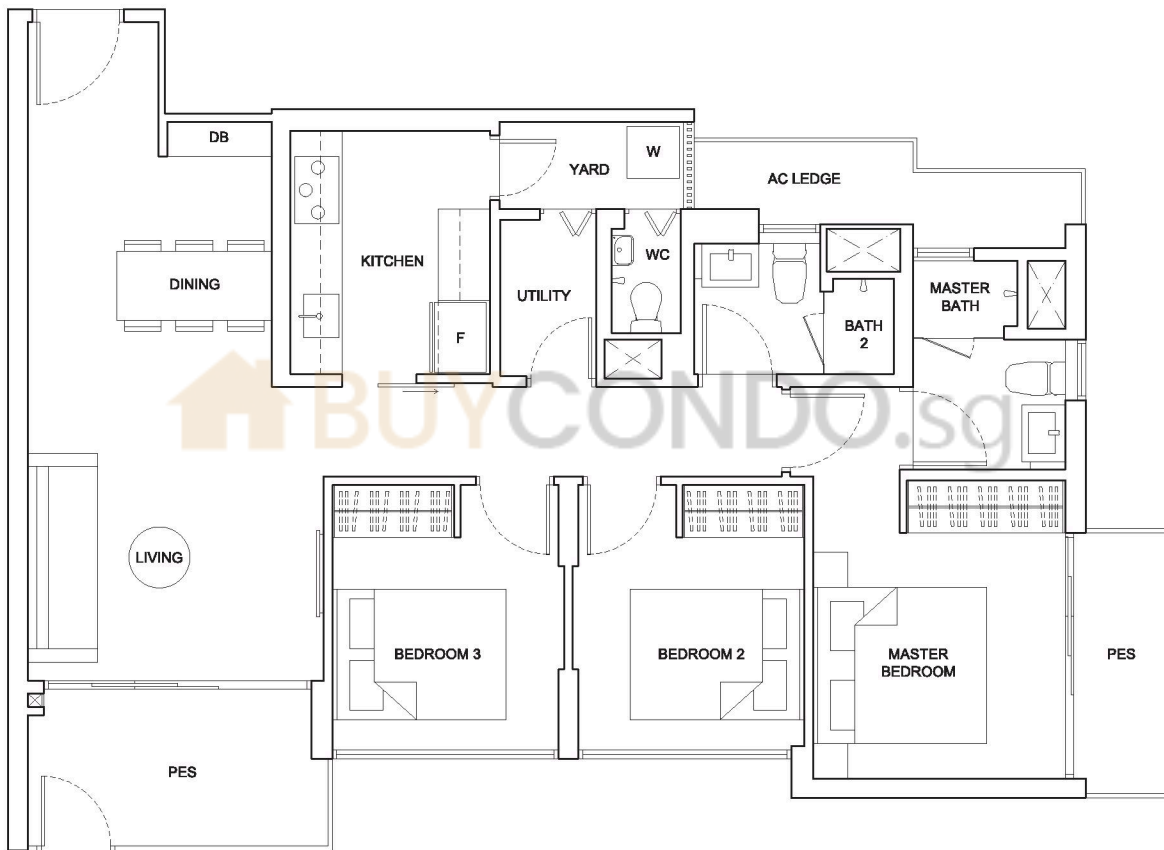
TYPE B6P

3-BEDROOM PREMIUM

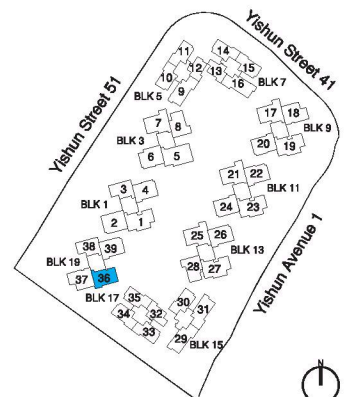
98sq m (1055sq ft)

BLK 19

#01-36



Area includes air-con (AC) ledge, private enclosed space (PES) and void area where applicable. Some units are mirror images of the apartment plans shown in the brochure. Please refer to the key plan for orientation. The plans are subject to change as may be approved by relevant authorities. All floor plans are approximate measurements only and are subject to government resurvey.



Keyplan is not drawn to scale

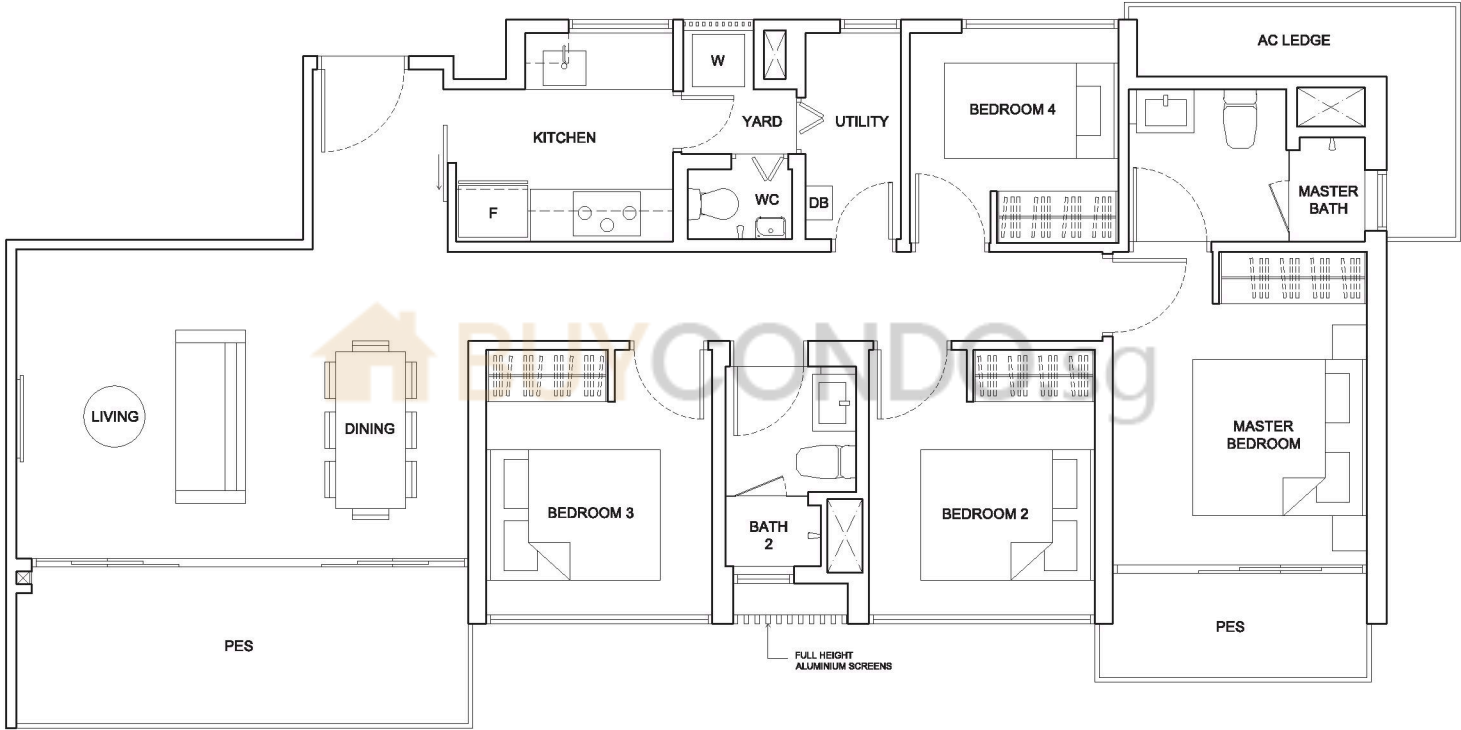


4-BEDROOM

108sq m (1163sq ft)

BLK 15
#01-29*
#01-31

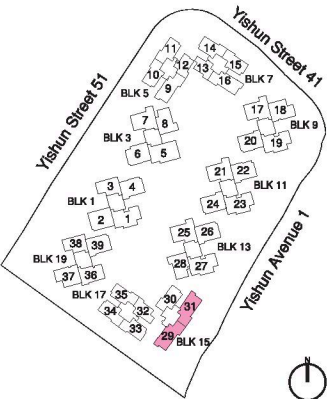
TYPE C1P



* Mirror Unit



Area includes air-con (AC) ledge, private enclosed space (PES) and void area where applicable. Some units are mirror images of the apartment plans shown in the brochure. Please refer to the key plan for orientation. The plans are subject to change as may be approved by relevant authorities. All floor plans are approximate measurements only and are subject to government resurvey.



Keyplan is not drawn to scale



TYPE C3P

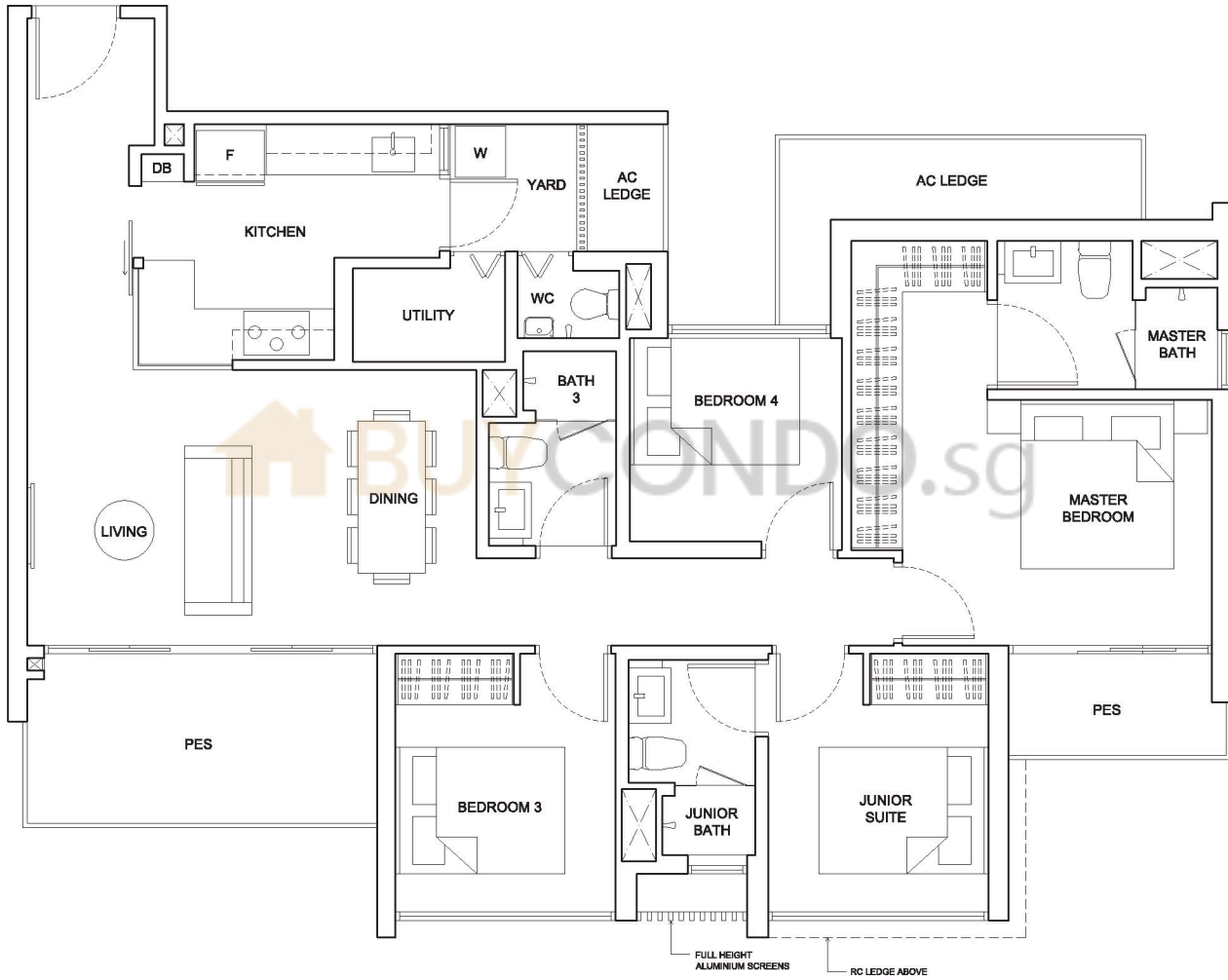
4-BEDROOM PREMIUM

119sq m (1281sq ft)

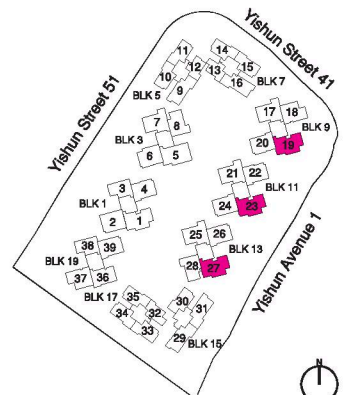
BLK 9
#01-19

BLK 11
#01-23

BLK 13
#01-27



Area includes air-con (AC) ledge, private enclosed space (PES) and void area where applicable. Some units are mirror images of the apartment plans shown in the brochure. Please refer to the key plan for orientation. The plans are subject to change as may be approved by relevant authorities. All floor plans are approximate measurements only and are subject to government resurvey.



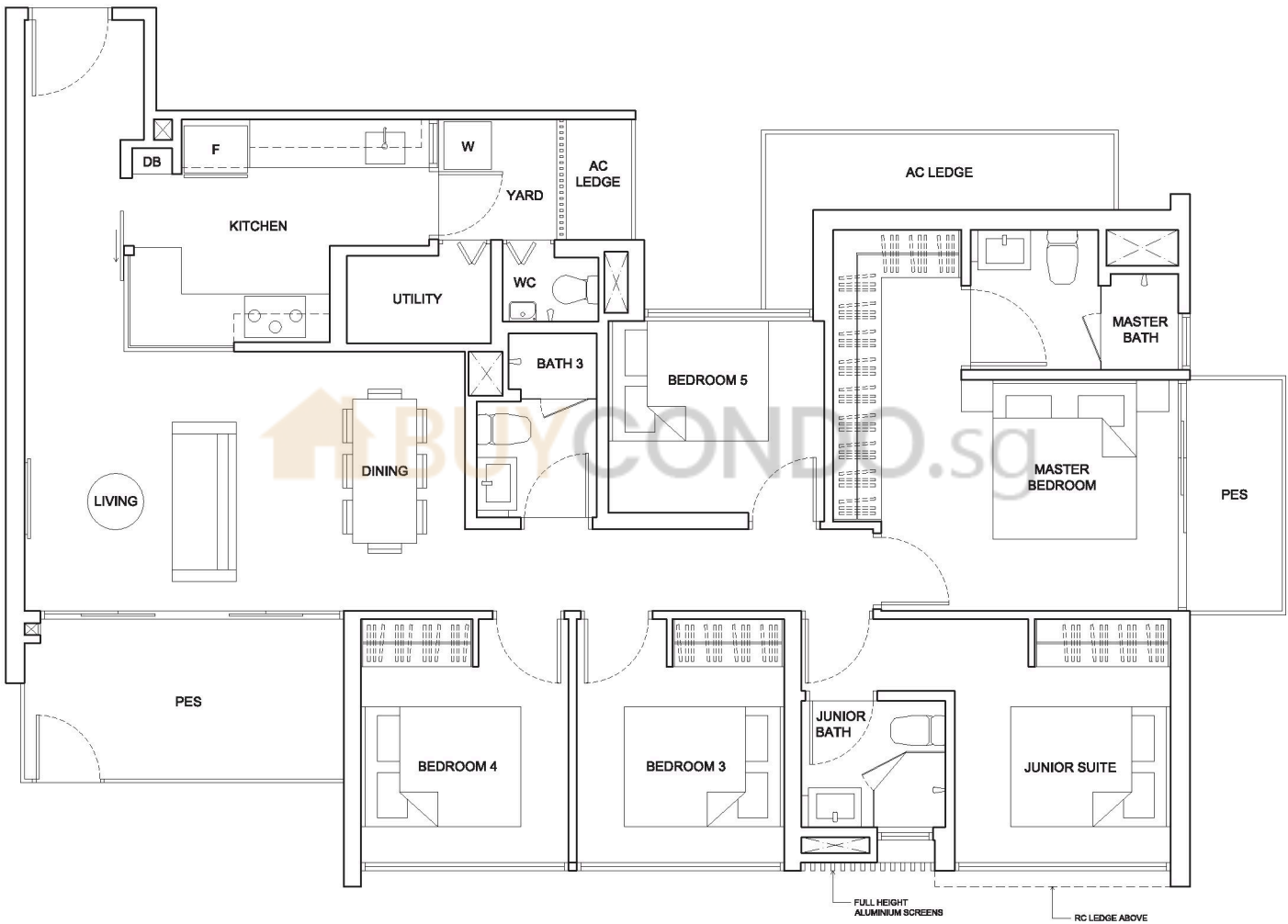
Keyplan is not drawn to scale

5-BEDROOM

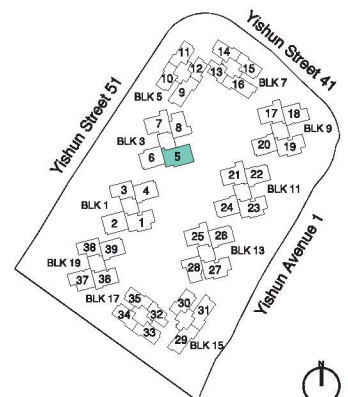
131sq m (1410sq ft)

BLK 3
#01-05

TYPE D1P



Area includes air-con (AC) ledge, private enclosed space (PES) and void area where applicable. Some units are mirror images of the apartment plans shown in the brochure. Please refer to the key plan for orientation. The plans are subject to change as may be approved by relevant authorities. All floor plans are approximate measurements only and are subject to government resurvey.



Keyplan is not drawn to scale

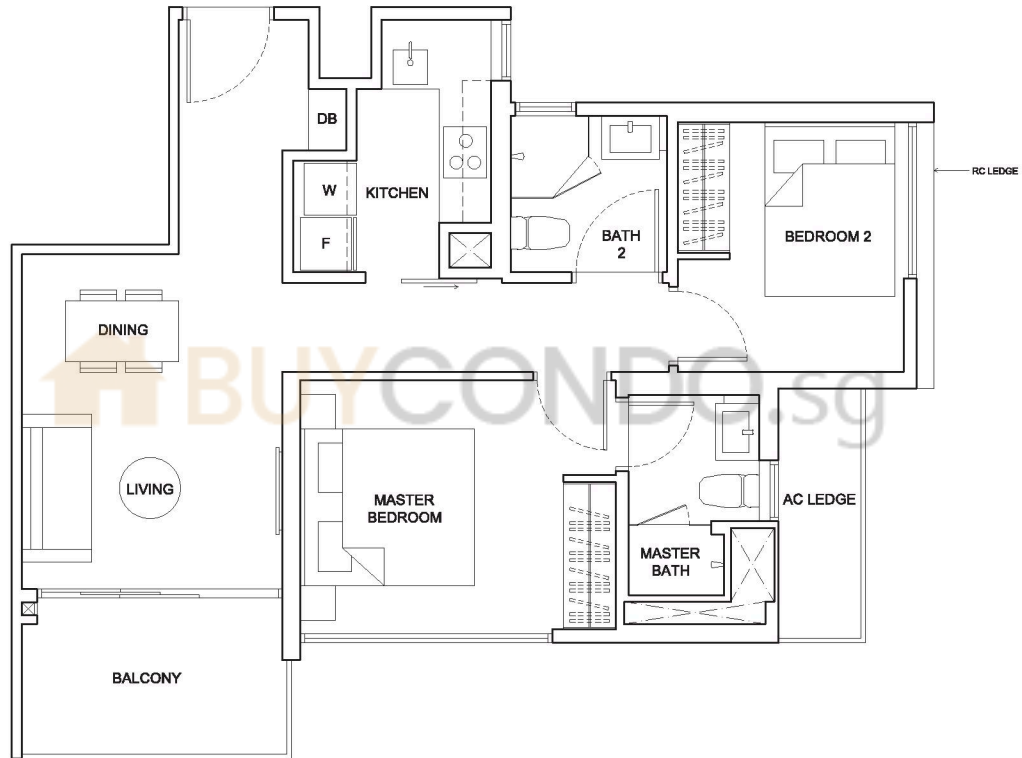
TYPE A1



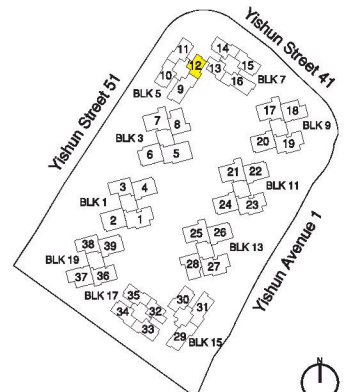
2-BEDROOM

65sq m (700sq ft)

BLK 5
#02-12 to #13-12



Area includes air-con (AC) ledge, private enclosed space (PES) and void area where applicable. Some units are mirror images of the apartment plans shown in the brochure. Please refer to the key plan for orientation. The plans are subject to change as may be approved by relevant authorities. All floor plans are approximate measurements only and are subject to government resurvey.



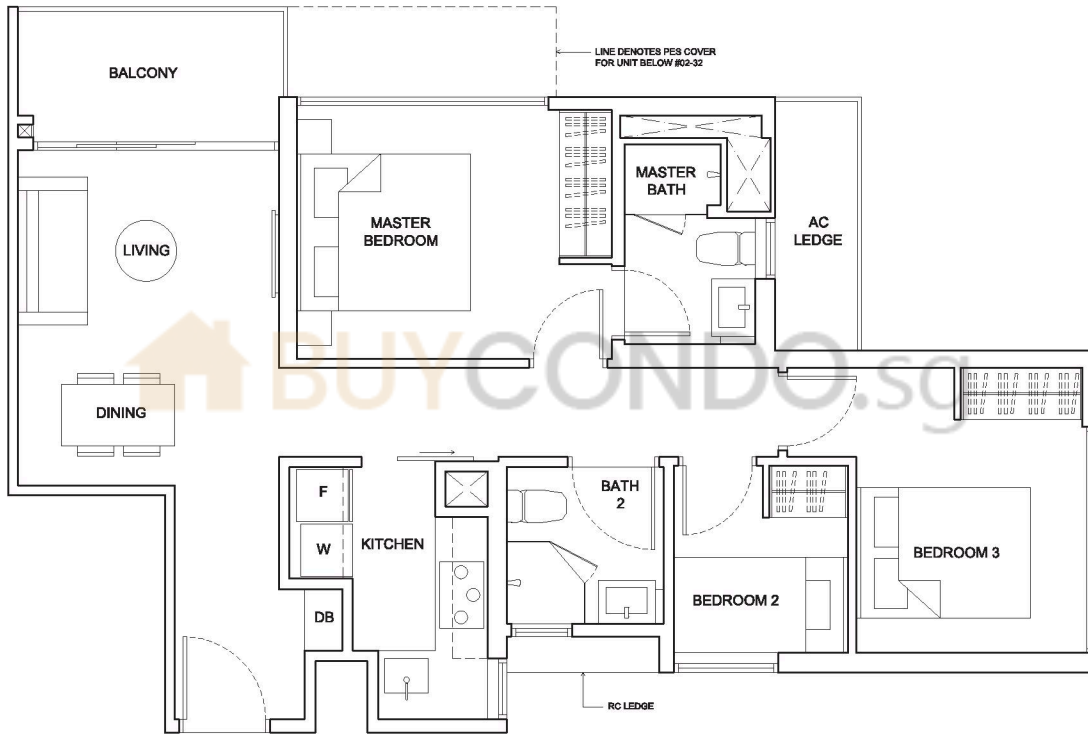
Keyplan is not drawn to scale

TYPE B1

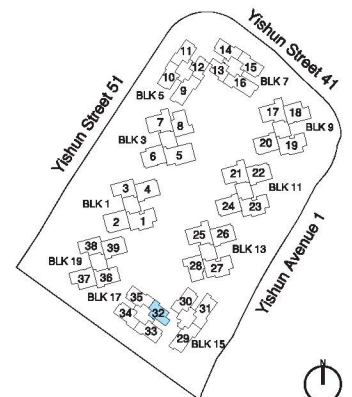
3-BEDROOM

73sq m (786sq ft)

BLK 17
#02-32 to #13-32



Area includes air-con (AC) ledge, private enclosed space (PES) and void area where applicable. Some units are mirror images of the apartment plans shown in the brochure. Please refer to the key plan for orientation. The plans are subject to change as may be approved by relevant authorities. All floor plans are approximate measurements only and are subject to government resurvey.



Keyplan is not drawn to scale

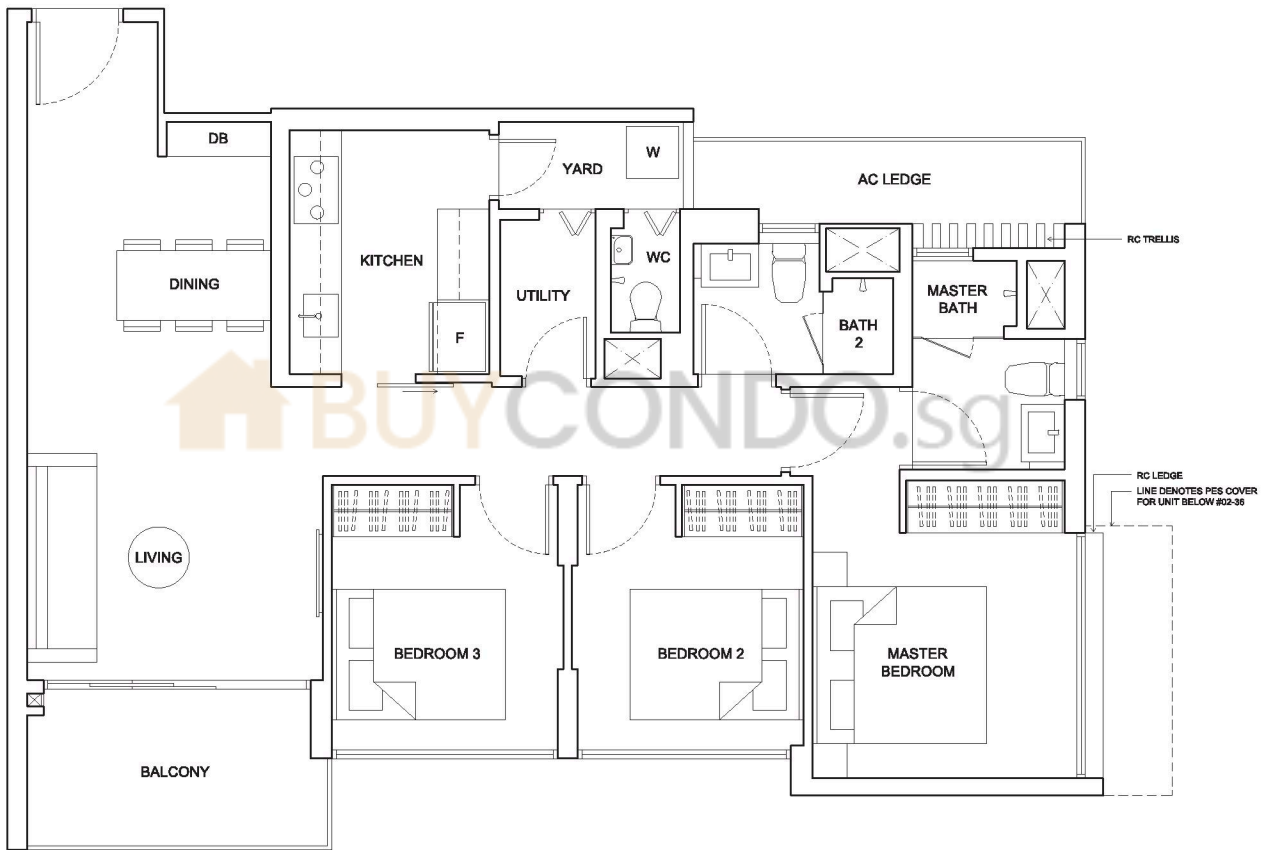
TYPE B6

3-BEDROOM PREMIUM

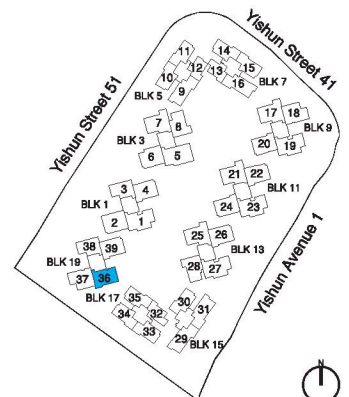
94sq m (1012sq ft)

BLK 19

#02-36 to #13-36



Area includes air-con (AC) ledge, private enclosed space (PES) and void area where applicable. Some units are mirror images of the apartment plans shown in the brochure. Please refer to the key plan for orientation. The plans are subject to change as may be approved by relevant authorities. All floor plans are approximate measurements only and are subject to government resurvey.



Keyplan is not drawn to scale





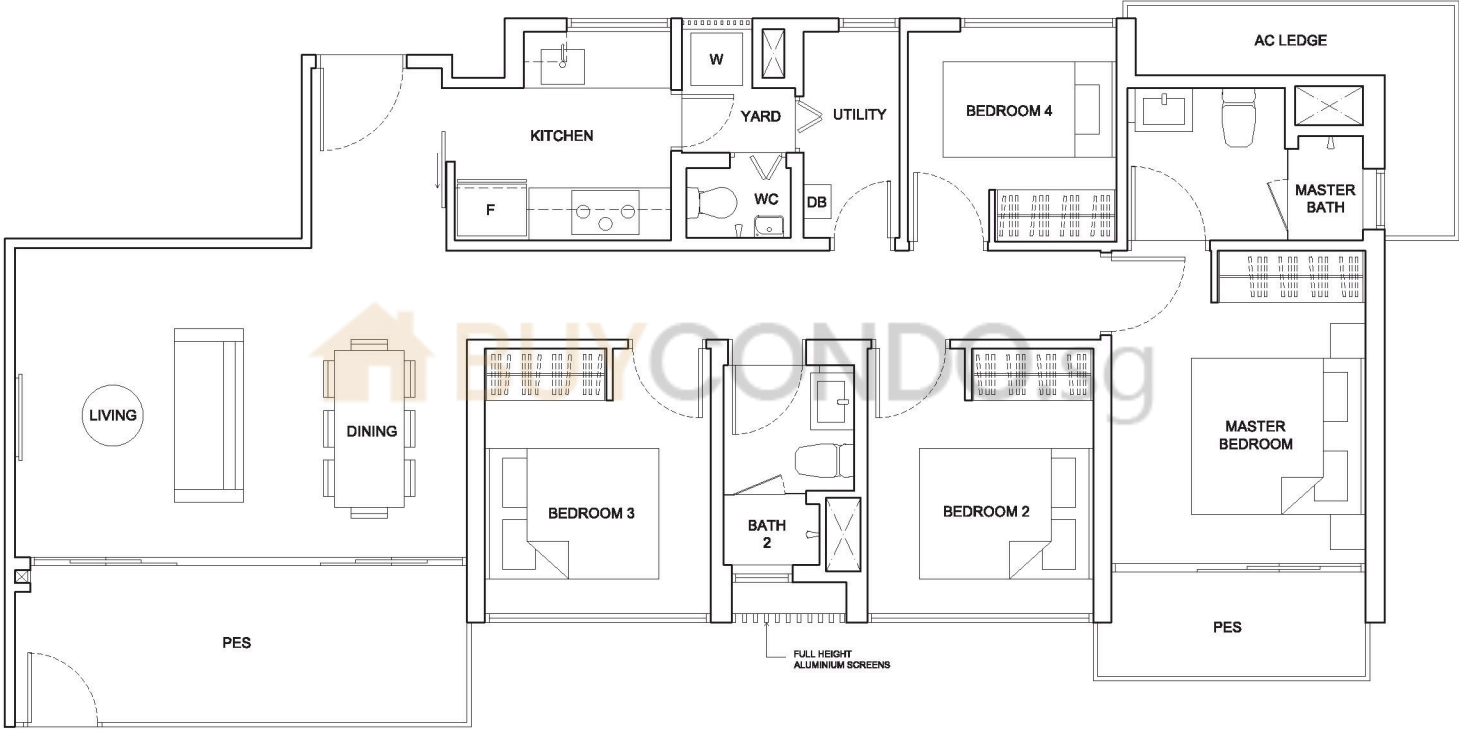
4-BEDROOM

108sq m (1163sq ft)

BLK 5
#01-09*

BLK 7
#01-16

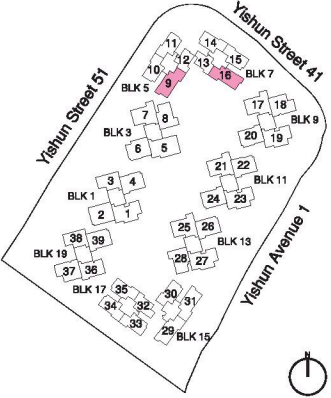
TYPE C1-1P



* Mirror Unit



Area includes air-con (AC) ledge, private enclosed space (PES) and void area where applicable. Some units are mirror images of the apartment plans shown in the brochure. Please refer to the key plan for orientation. The plans are subject to change as may be approved by relevant authorities. All floor plans are approximate measurements only and are subject to government resurvey.

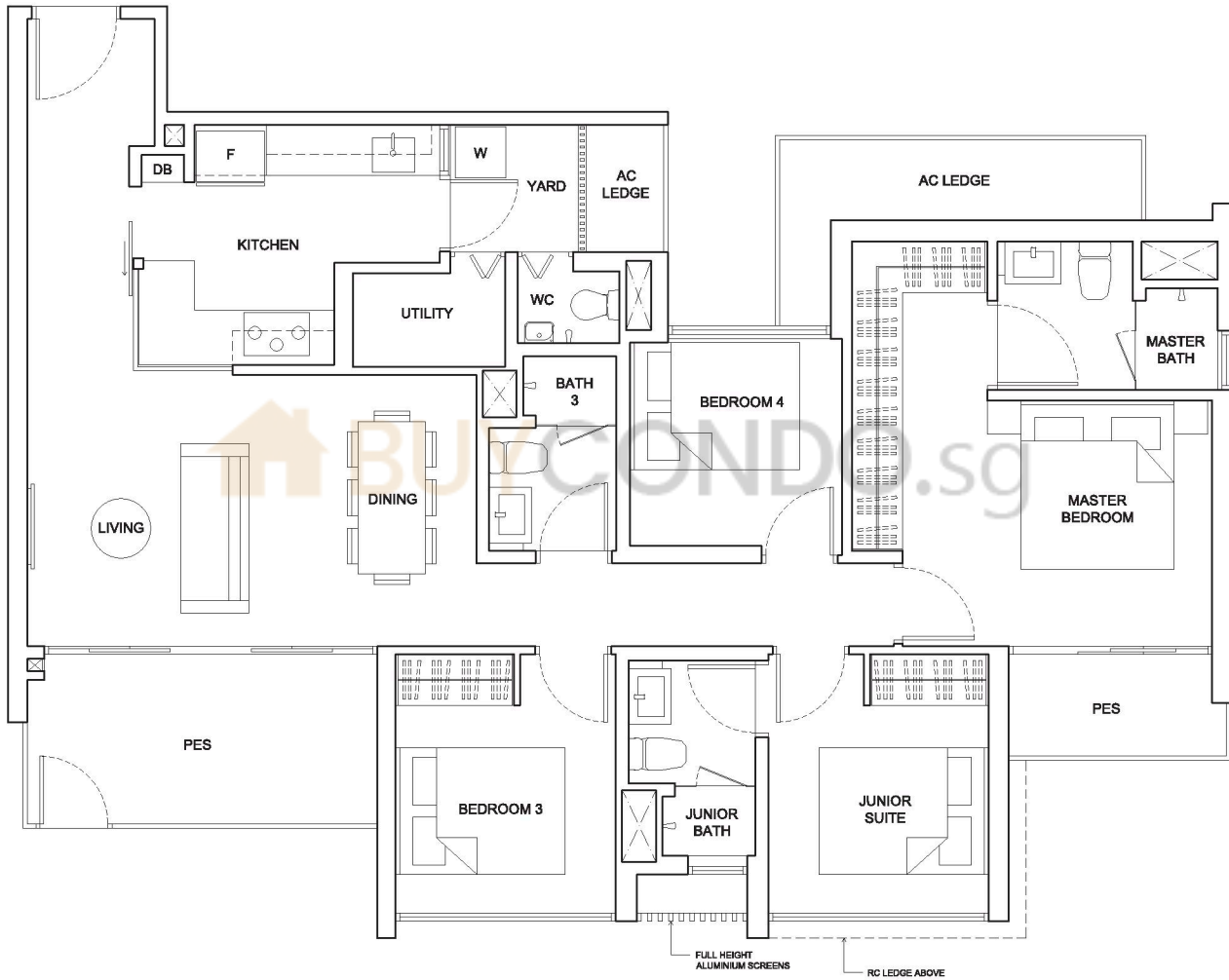


Keyplan is not drawn to scale

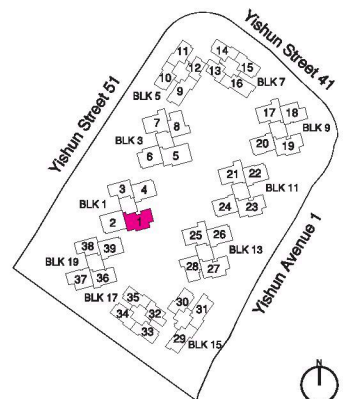
TYPE C3-1P

**4-BEDROOM
PREMIUM**
119sq m (1281sq ft)

BLK 1
#01-01



Area includes air-con (AC) ledge, private enclosed space (PES) and void area where applicable. Some units are mirror images of the apartment plans shown in the brochure. Please refer to the key plan for orientation. The plans are subject to change as may be approved by relevant authorities. All floor plans are approximate measurements only and are subject to government resurvey.



Keyplan is not drawn to scale

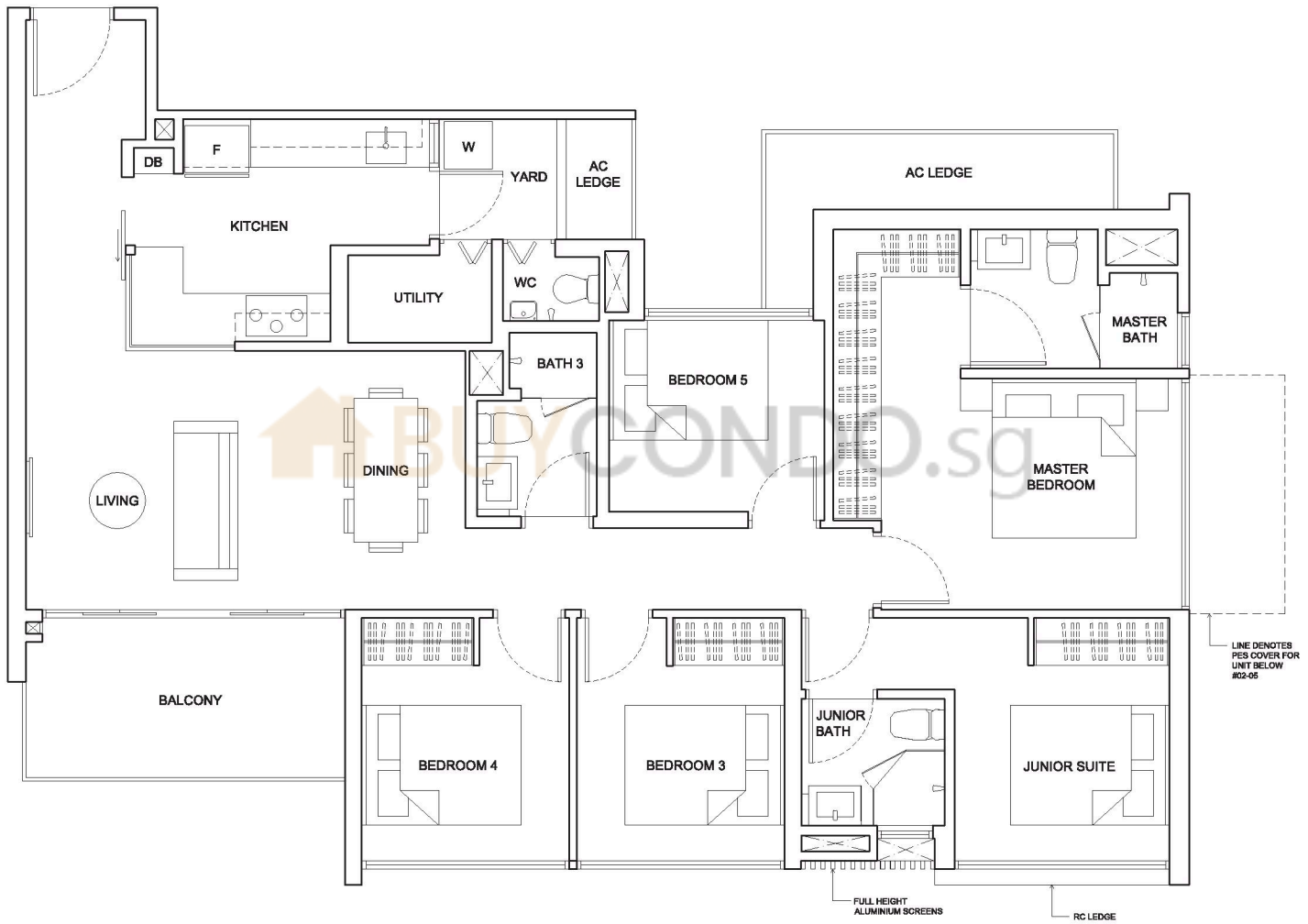


TYPE D1

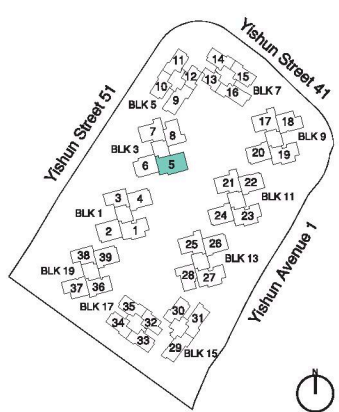
5-BEDROOM

128sq m (1378sq ft)

BLK 3
#02-05 to #13-05



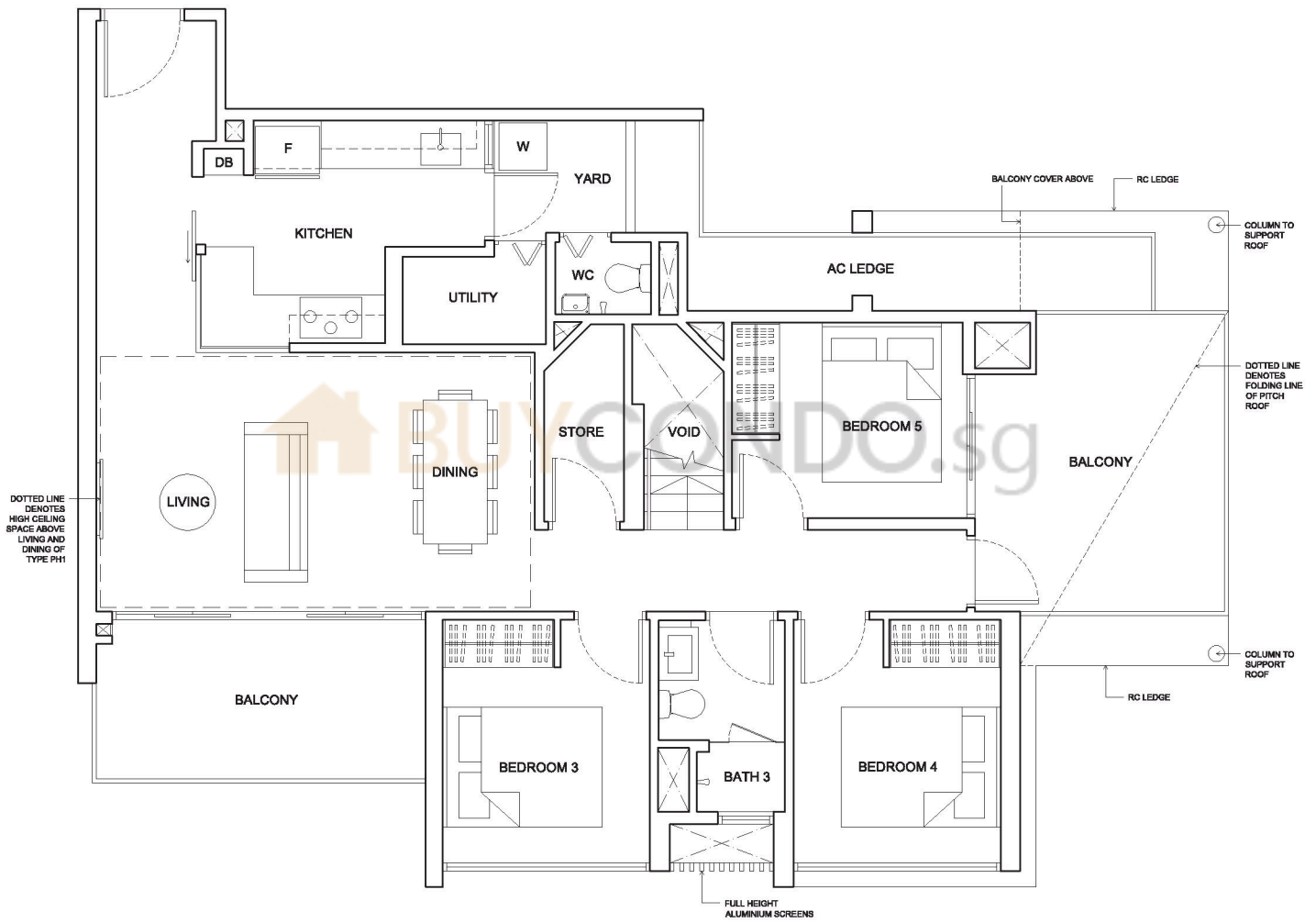
Area includes air-con (AC) ledge, private enclosed space (PES) and void area where applicable. Some units are mirror images of the apartment plans shown in the brochure. Please refer to the key plan for orientation. The plans are subject to change as may be approved by relevant authorities. All floor plans are approximate measurements only and are subject to government resurvey.



Keyplan is not drawn to scale

TYPE PH1

LOWER LEVEL

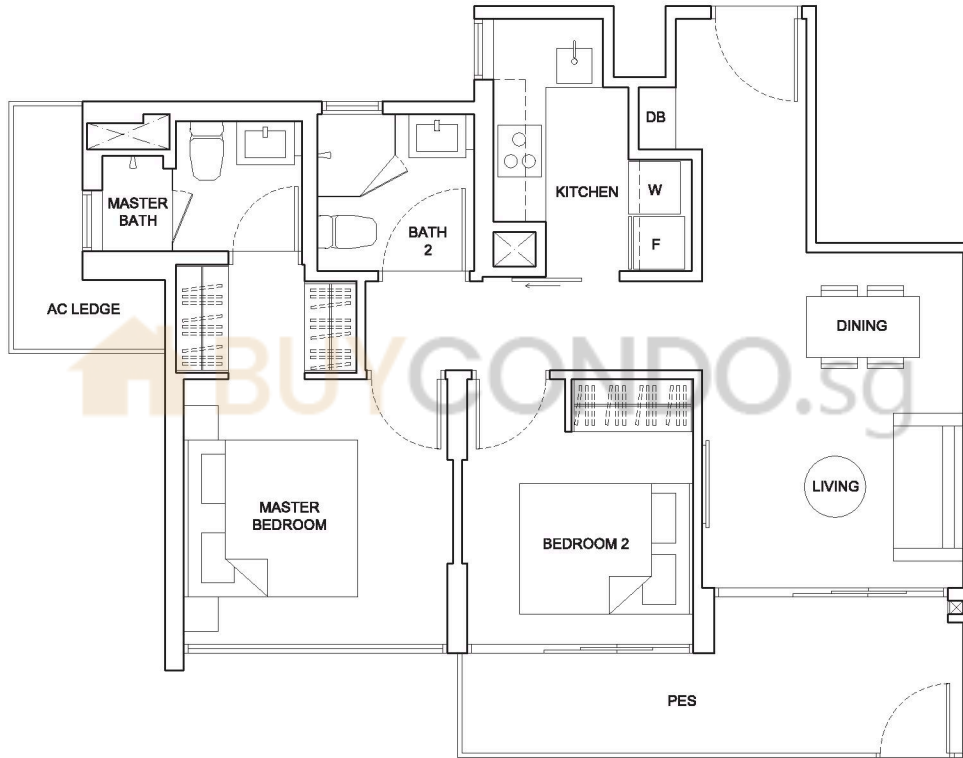


TYPE A2P

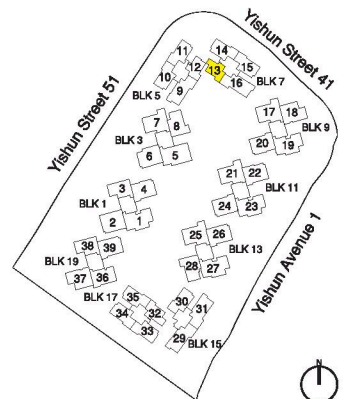
2-BEDROOM

70sq m (753sq ft)

BLK 7
#01-13



Area includes air-con (AC) ledge, private enclosed space (PES) and void area where applicable. Some units are mirror images of the apartment plans shown in the brochure. Please refer to the key plan for orientation. The plans are subject to change as may be approved by relevant authorities. All floor plans are approximate measurements only and are subject to government resurvey.



Keyplan is not drawn to scale

TYPE B2P

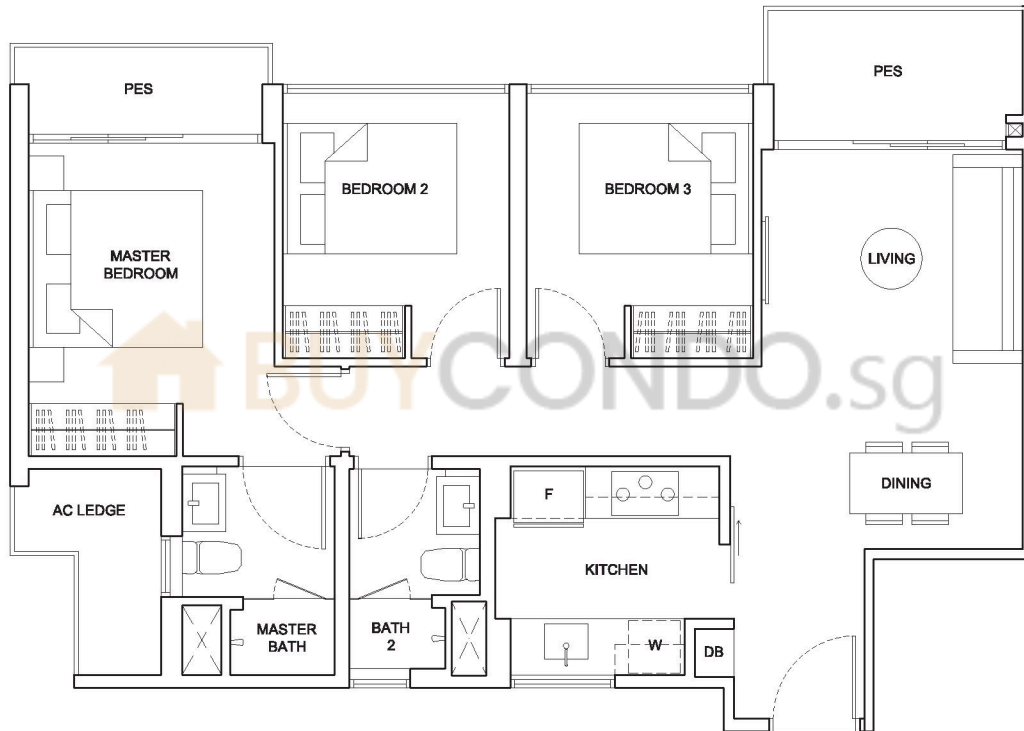
3-BEDROOM

81sq m (872sq ft)

BLK 5
#01-11*

BLK 7
#01-14

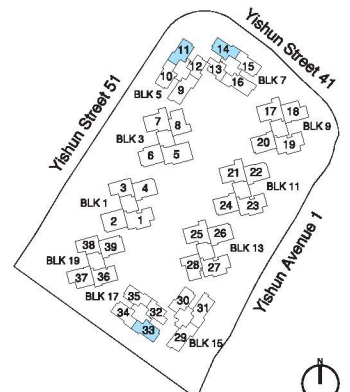
BLK 17
#01-33



* Mirror Unit



Area includes air-con (AC) ledge, private enclosed space (PES) and void area where applicable. Some units are mirror images of the apartment plans shown in the brochure. Please refer to the key plan for orientation. The plans are subject to change as may be approved by relevant authorities. All floor plans are approximate measurements only and are subject to government resurvey.



Keyplan is not drawn to scale

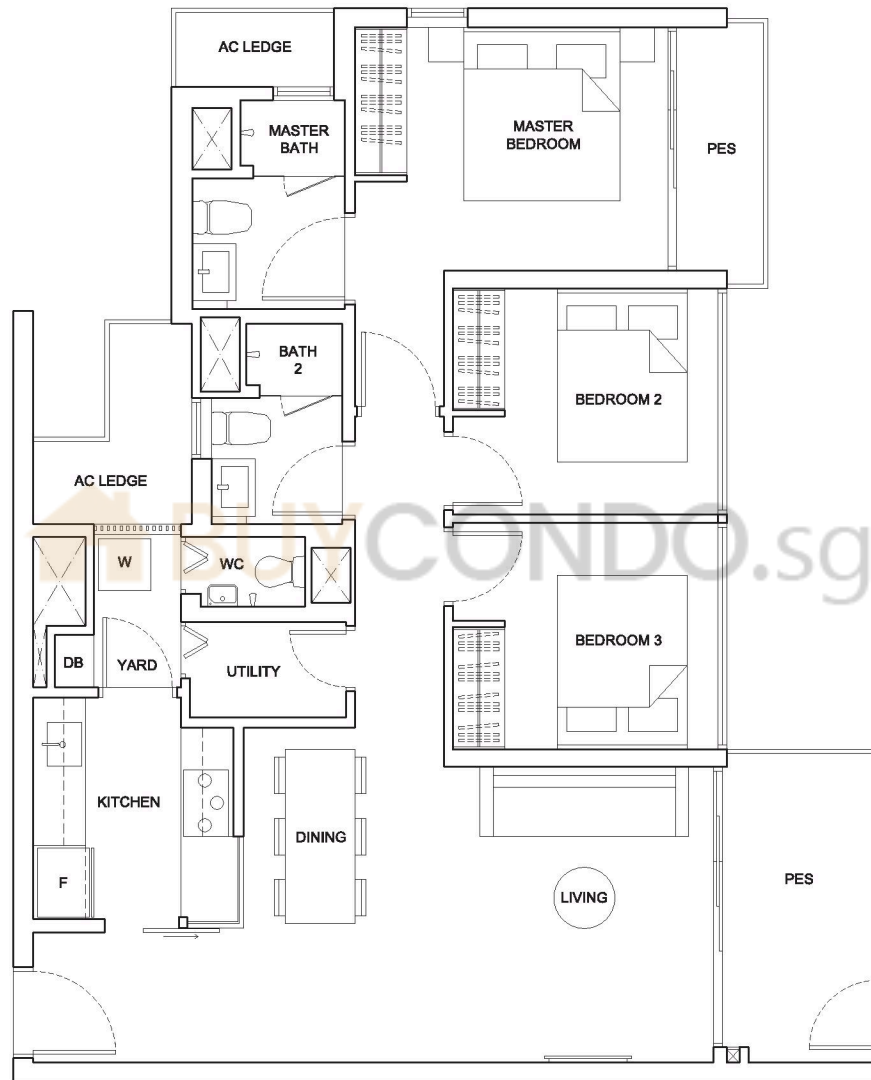
TYPE B7P

3-BEDROOM PREMIUM

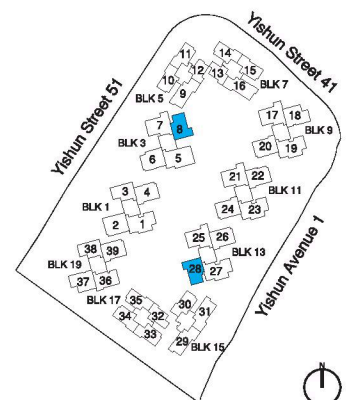
96sq m (1033sq ft)

BLK 3
#01-08

BLK 13
#01-28



Area includes air-con (AC) ledge, private enclosed space (PES) and void area where applicable. Some units are mirror images of the apartment plans shown in the brochure. Please refer to the key plan for orientation. The plans are subject to change as may be approved by relevant authorities. All floor plans are approximate measurements only and are subject to government resurvey.



Keyplan is not drawn to scale

TYPE C1

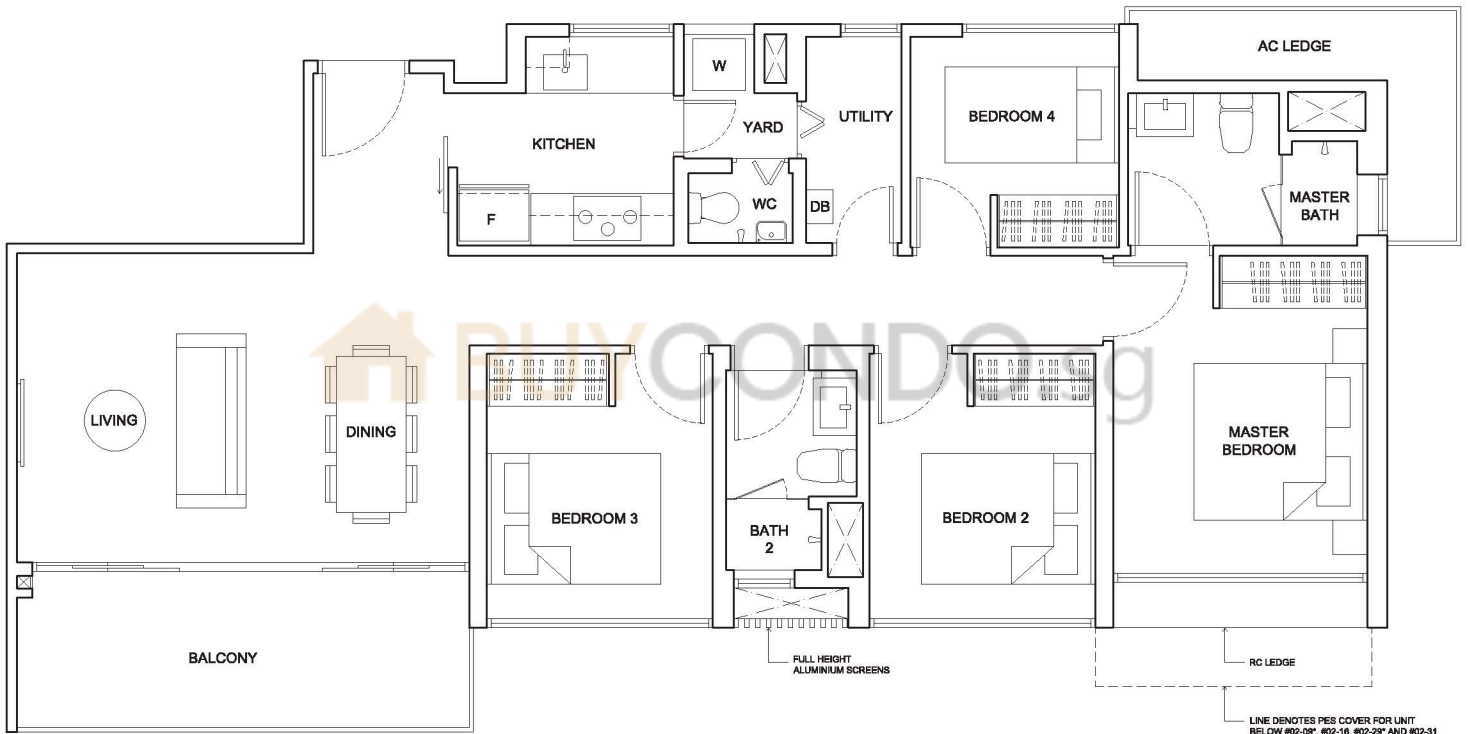
4-BEDROOM

104sq m (1119sq ft)

BLK 5
#02-09* to #13-09*

BLK 7
#02-16 to #13-16

BLK 15
#02-29* to #13-29*
#02-31 to #13-31

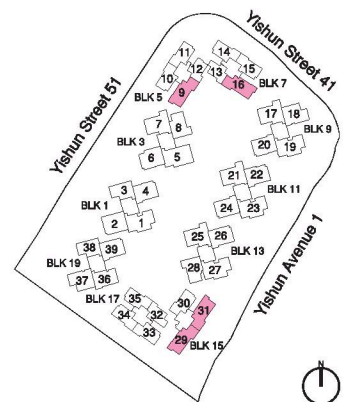


LINE DENOTES PES COVER FOR UNIT BELOW #02-09*, #02-16, #02-29* AND #02-31

* Mirror Unit



Area includes air-con (AC) ledge, private enclosed space (PES) and void area where applicable. Some units are mirror images of the apartment plans shown in the brochure. Please refer to the key plan for orientation. The plans are subject to change as may be approved by relevant authorities. All floor plans are approximate measurements only and are subject to government resurvey.



Keyplan is not drawn to scale

TYPE C3

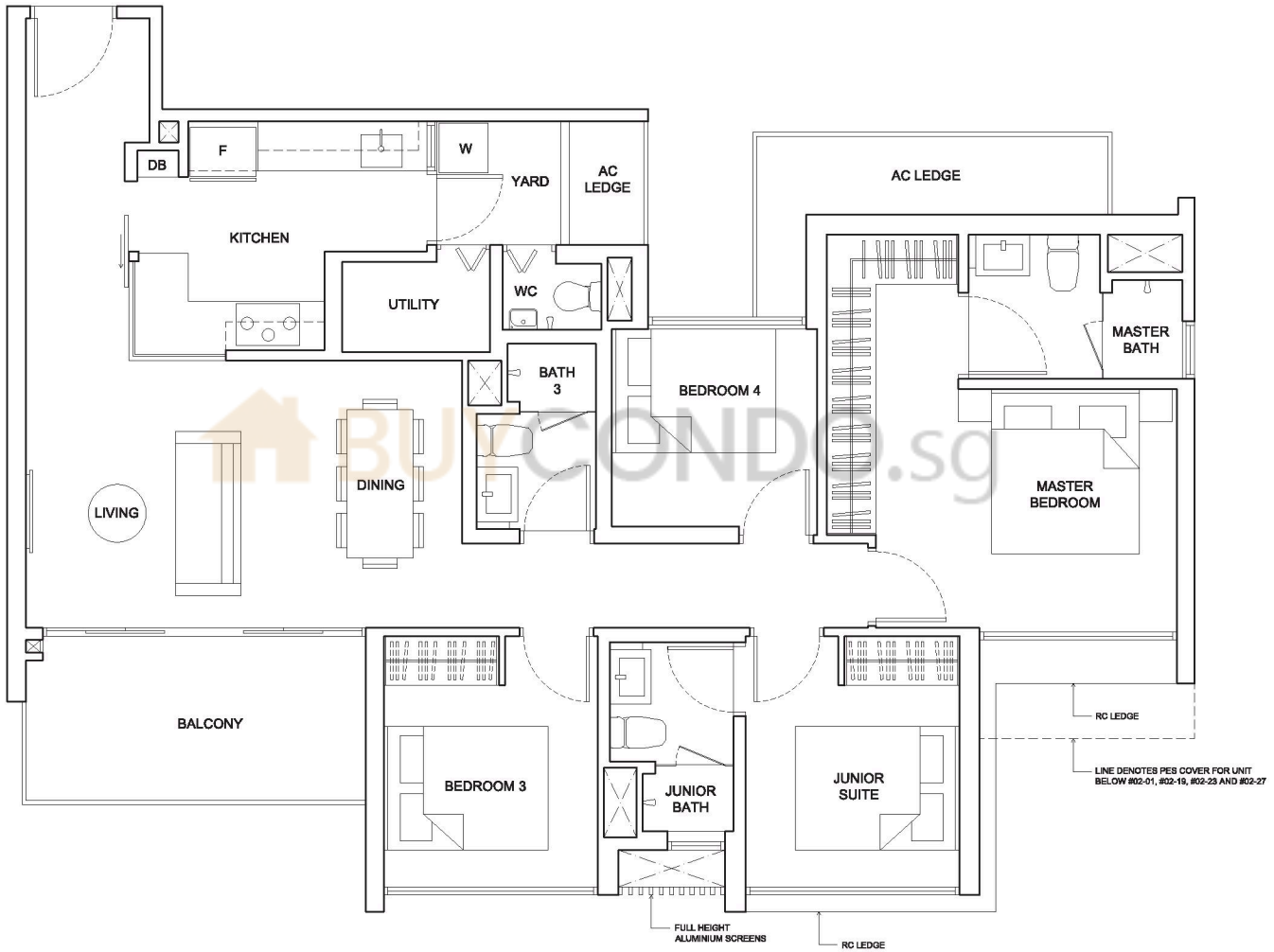
**4-BEDROOM
PREMIUM**
116sq m (1249sq ft)

BLK 1
#02-01 to #12-01

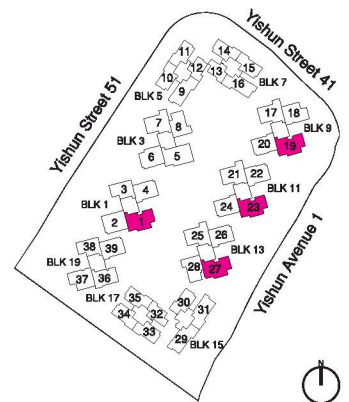
BLK 9
#02-19 to #12-19

BLK 11
#02-23 to #12-23

BLK 13
#02-27 to #12-27



Area includes air-con (AC) ledge, private enclosed space (PES) and void area where applicable. Some units are mirror images of the apartment plans shown in the brochure. Please refer to the key plan for orientation. The plans are subject to change as may be approved by relevant authorities. All floor plans are approximate measurements only and are subject to government resurvey.



Keyplan is not drawn to scale

TYPE PH1

UPPER LEVEL



5-BEDROOM PENTHOUSE

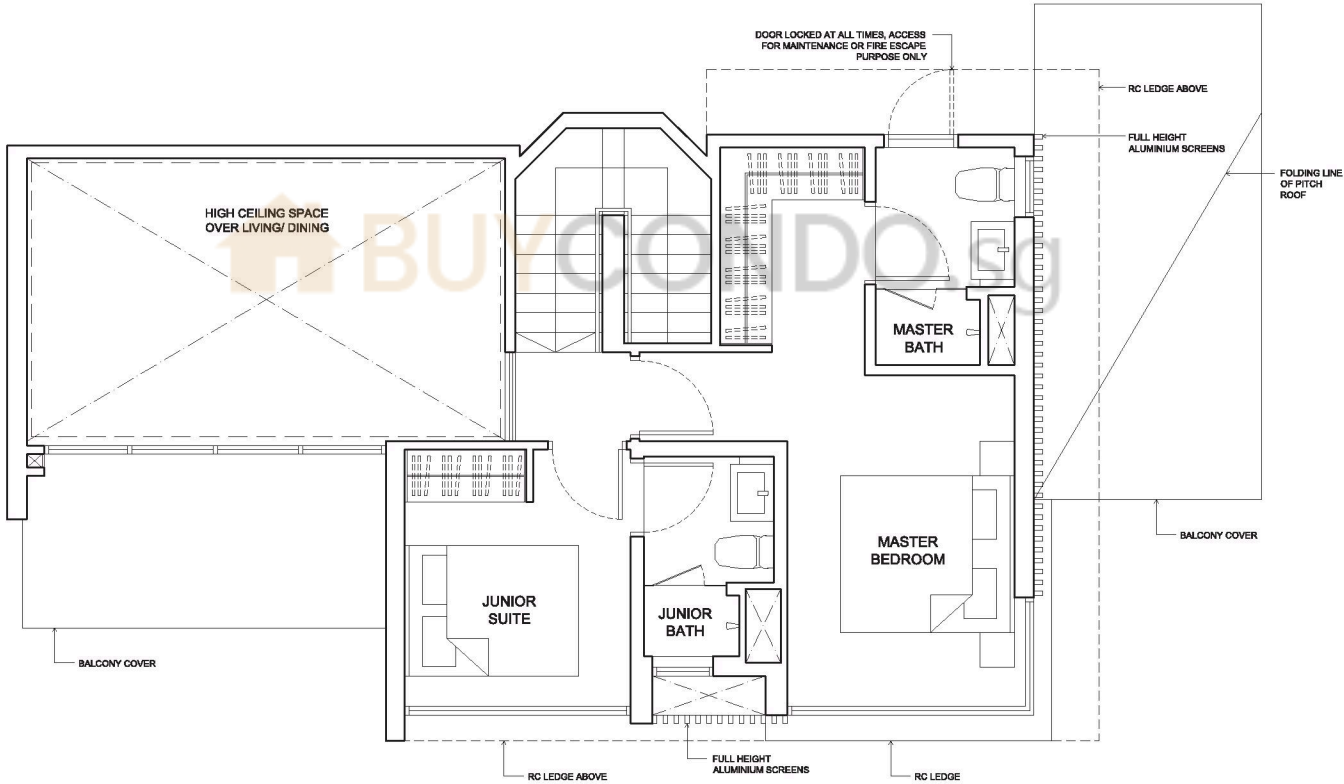
152sq m (1636sq ft)
(Including 3sq m/32 sq ft of
void above staircase)

BLK 1
#13-01

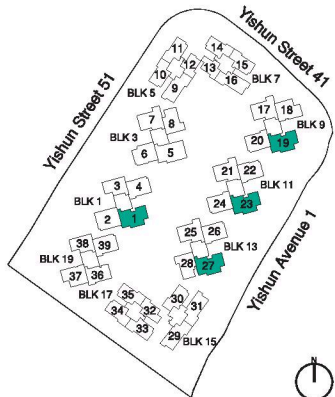
BLK 9
#13-19

BLK 11
#13-23

BLK 13
#13-27



Area includes air-con (AC) ledge, private enclosed space (PES) and void area where applicable. Some units are mirror images of the apartment plans shown in the brochure. Please refer to the key plan for orientation. The plans are subject to change as may be approved by relevant authorities. All floor plans are approximate measurements only and are subject to government resurvey.



Keyplan is not drawn to scale



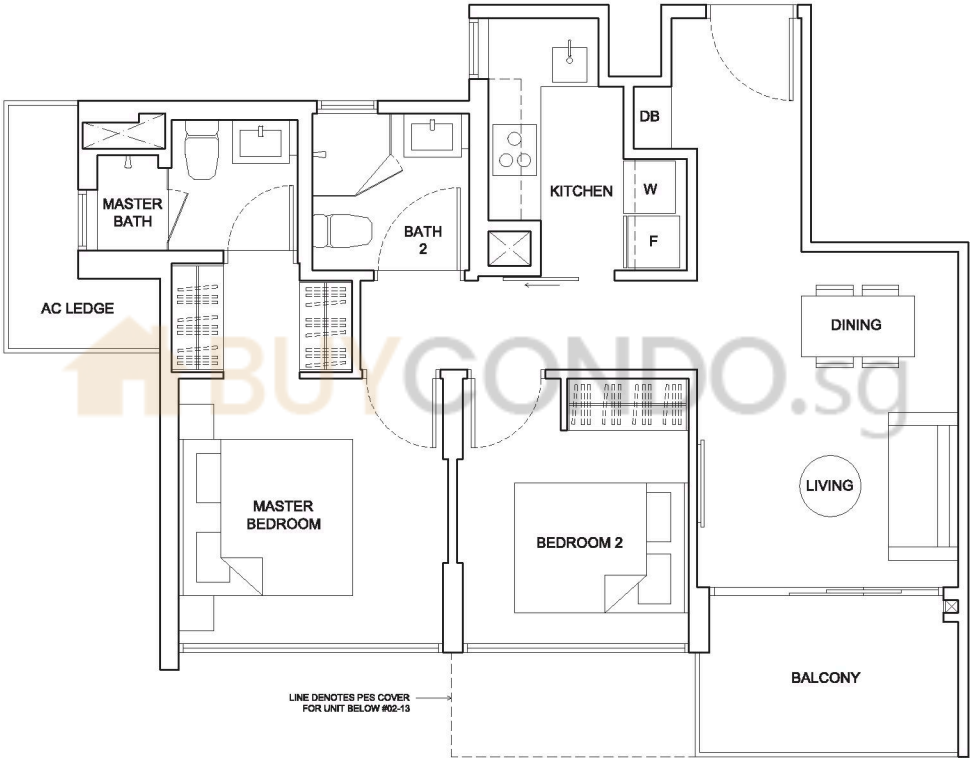


2-BEDROOM

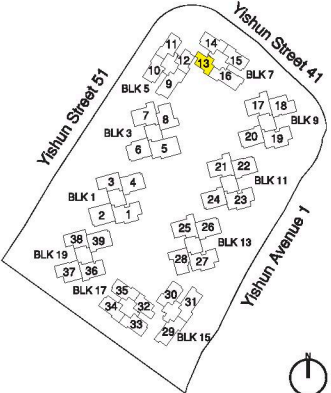
67sq m (721sq ft)

BLK 7
#02-13 to #13-13

TYPE A2



Area includes air-con (AC) ledge, private enclosed space (PES) and void area where applicable. Some units are mirror images of the apartment plans shown in the brochure. Please refer to the key plan for orientation. The plans are subject to change as may be approved by relevant authorities. All floor plans are approximate measurements only and are subject to government resurvey.



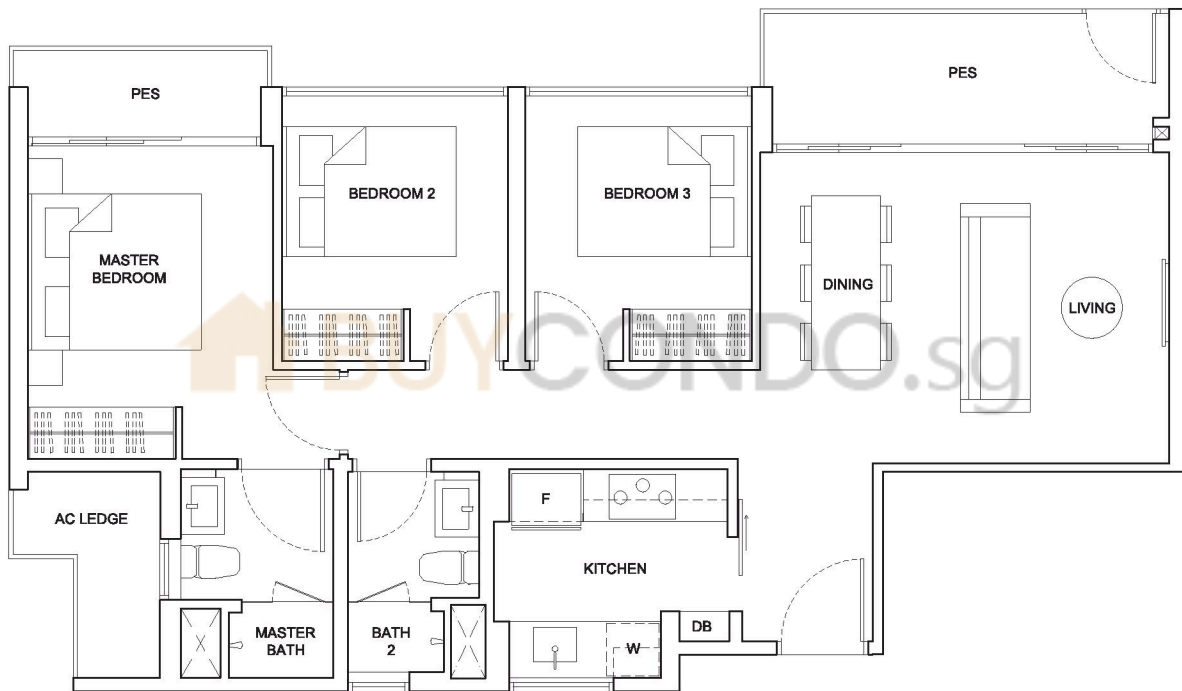
Keyplan is not drawn to scale

TYPE B3P

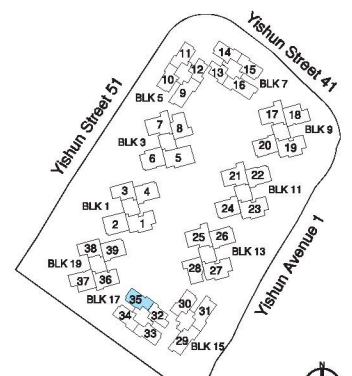
3-BEDROOM

86sq m (926sq ft)

BLK 17
#01-35



Area includes air-con (AC) ledge, private enclosed space (PES) and void area where applicable. Some units are mirror images of the apartment plans shown in the brochure. Please refer to the key plan for orientation. The plans are subject to change as may be approved by relevant authorities. All floor plans are approximate measurements only and are subject to government resurvey.



Keyplan is not drawn to scale

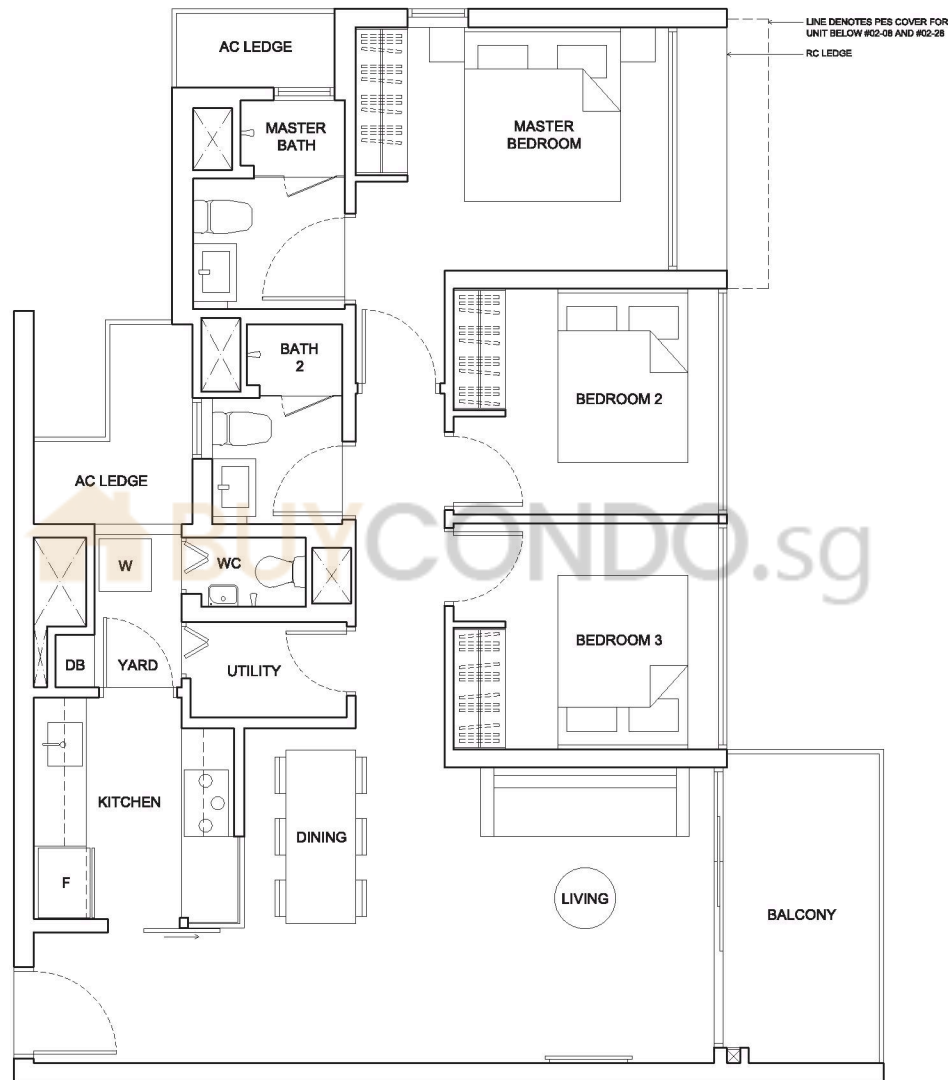
TYPE B7

3-BEDROOM PREMIUM

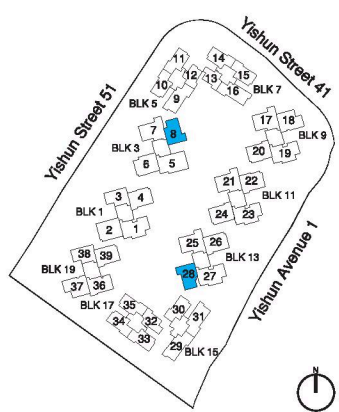
93sq m (1001sq ft)

BLK 3
#02-08 to #13-08

BLK 13
#02-28 to #13-28



Area includes air-con (AC) ledge, private enclosed space (PES) and void area where applicable. Some units are mirror images of the apartment plans shown in the brochure. Please refer to the key plan for orientation. The plans are subject to change as may be approved by relevant authorities. All floor plans are approximate measurements only and are subject to government resurvey.



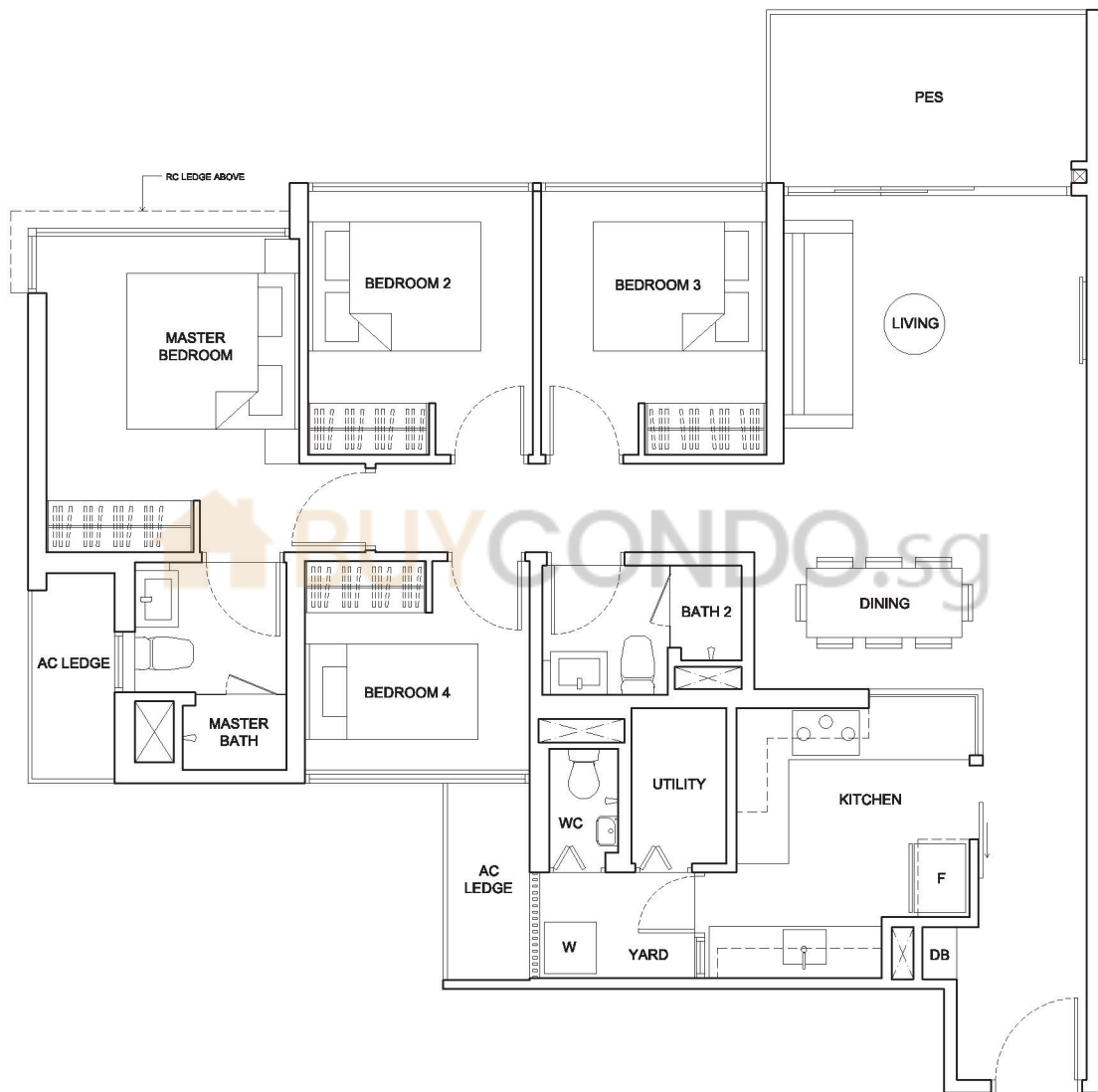
Keyplan is not drawn to scale

4-BEDROOM

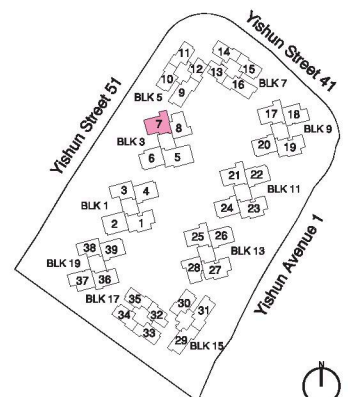
109sq m (1173sq ft)

BLK 3
#01-07

TYPE C2P



Area includes air-con (AC) ledge, private enclosed space (PES) and void area where applicable. Some units are mirror images of the apartment plans shown in the brochure. Please refer to the key plan for orientation. The plans are subject to change as may be approved by relevant authorities. All floor plans are approximate measurements only and are subject to government resurvey.



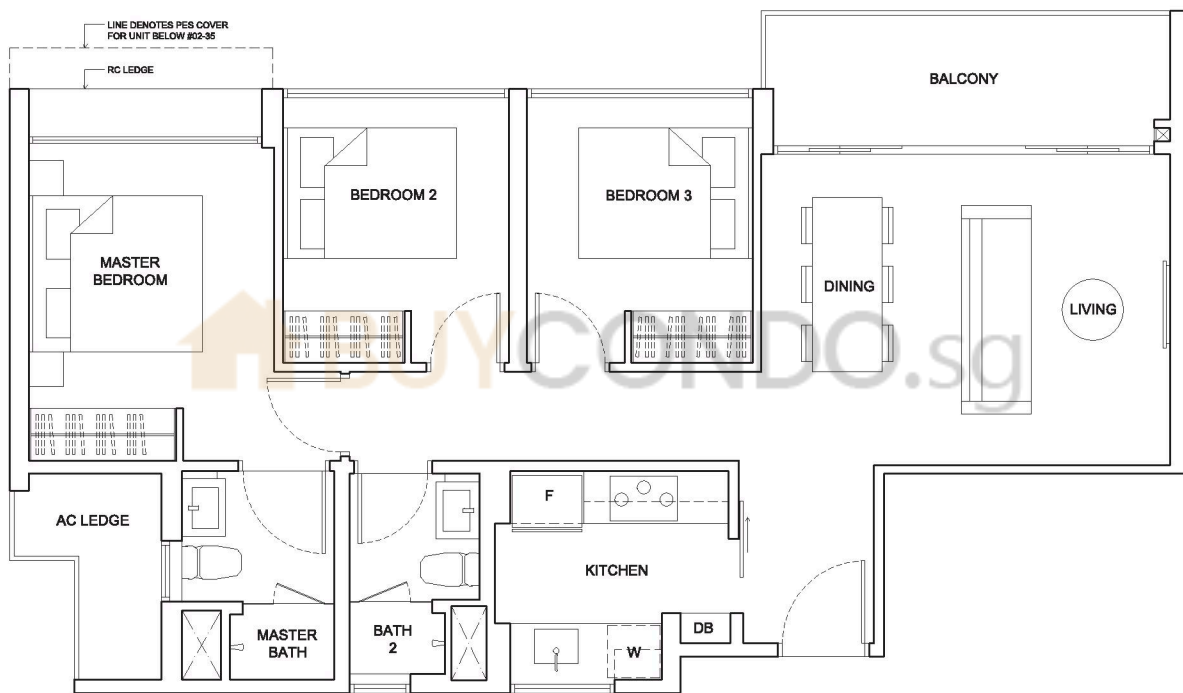
Keyplan is not drawn to scale

TYPE B3

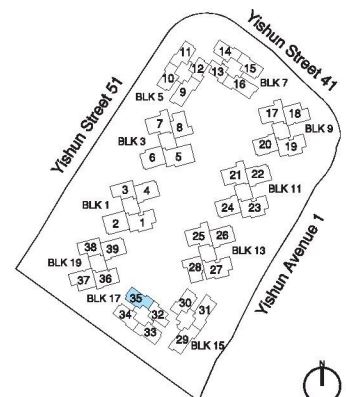
3-BEDROOM

83sq m (893sq ft)

BLK 17
#02-35 to #13-35



Area includes air-con (AC) ledge, private enclosed space (PES) and void area where applicable. Some units are mirror images of the apartment plans shown in the brochure. Please refer to the key plan for orientation. The plans are subject to change as may be approved by relevant authorities. All floor plans are approximate measurements only and are subject to government resurvey.



Keyplan is not drawn to scale

TYPE B8P

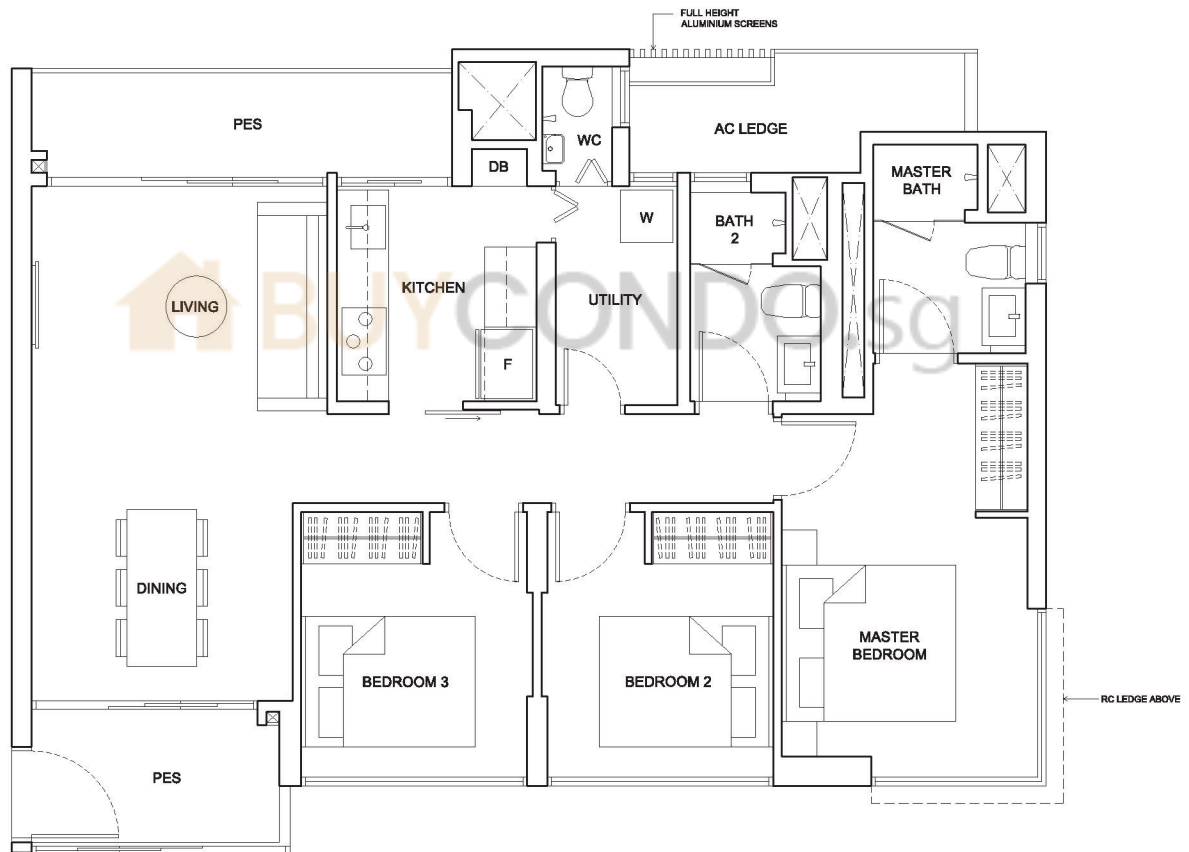
3-BEDROOM PREMIUM

95sq m (1023sq ft)

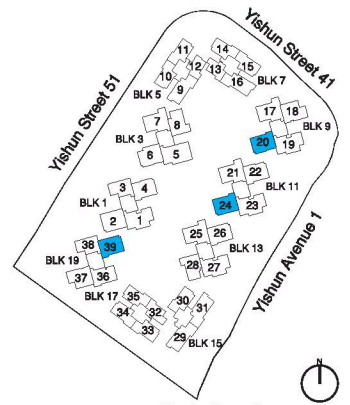
BLK 9
#01-20

BLK 11
#01-24

BLK 19
#01-39



Area includes air-con (AC) ledge, private enclosed space (PES) and void area where applicable. Some units are mirror images of the apartment plans shown in the brochure. Please refer to the key plan for orientation. The plans are subject to change as may be approved by relevant authorities. All floor plans are approximate measurements only and are subject to government resurvey.



Keyplan is not drawn to scale

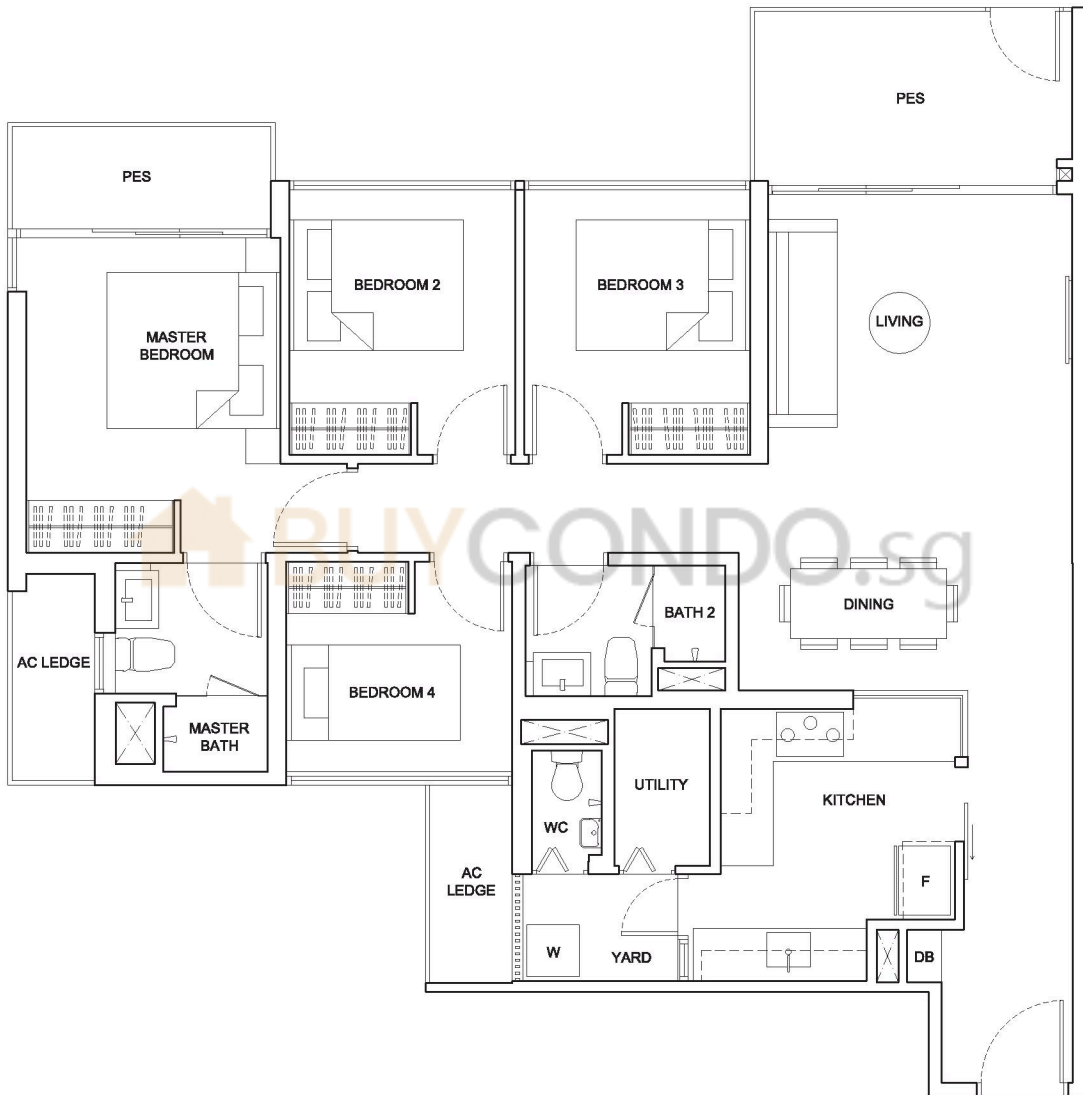
4-BEDROOM

113sq m (1216sq ft)

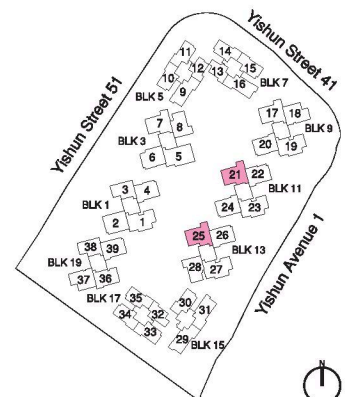
BLK 11
#01-21

BLK 13
#01-25

TYPE C2-1P



Area includes air-con (AC) ledge, private enclosed space (PES) and void area where applicable. Some units are mirror images of the apartment plans shown in the brochure. Please refer to the key plan for orientation. The plans are subject to change as may be approved by relevant authorities. All floor plans are approximate measurements only and are subject to government resurvey.



Keyplan is not drawn to scale

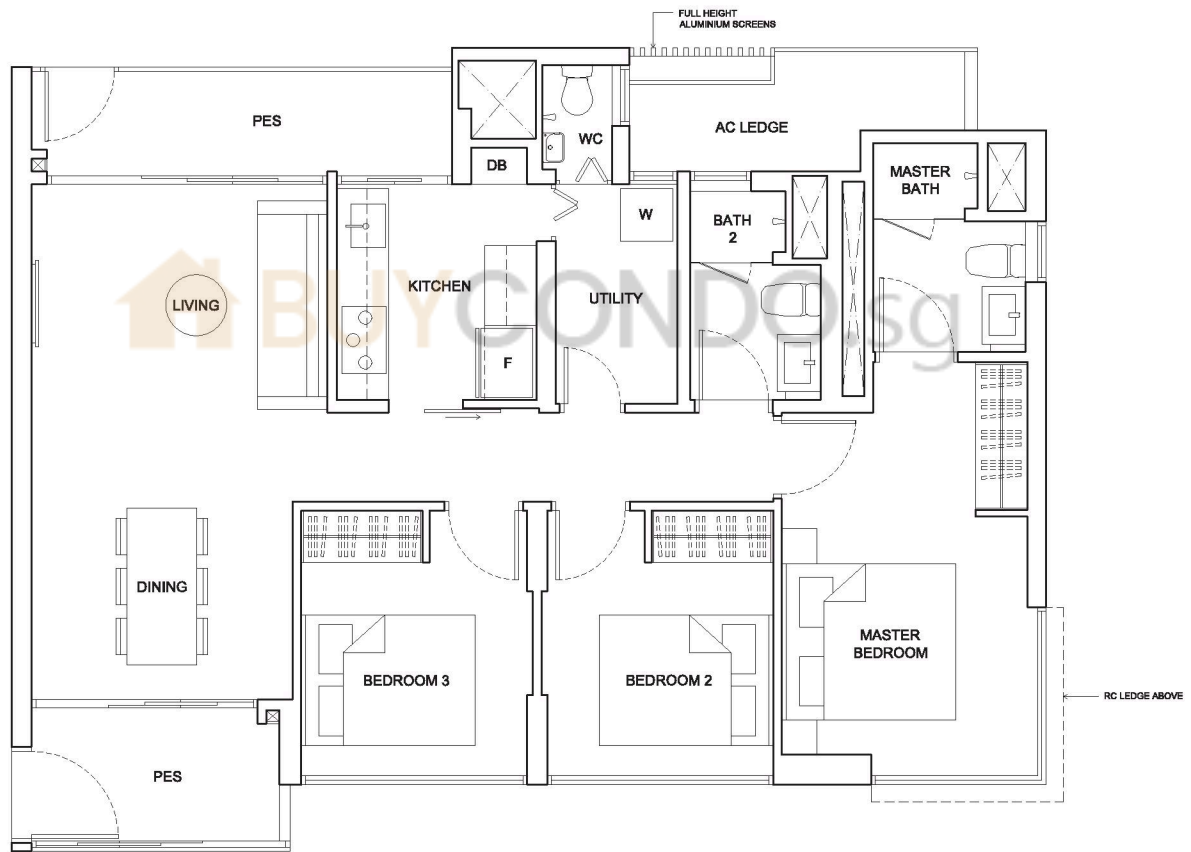
TYPE B8-1P

3-BEDROOM PREMIUM

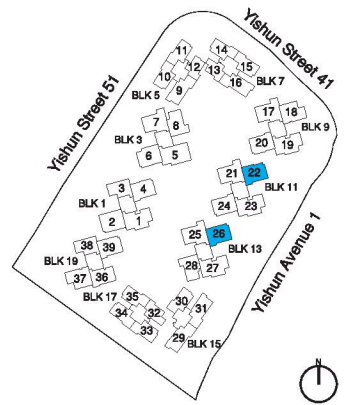
95sq m (1023sq ft)

BLK 11
#01-22

BLK 13
#01-26



Area includes air-con (AC) ledge, private enclosed space (PES) and void area where applicable. Some units are mirror images of the apartment plans shown in the brochure. Please refer to the key plan for orientation. The plans are subject to change as may be approved by relevant authorities. All floor plans are approximate measurements only and are subject to government resurvey.



Keyplan is not drawn to scale

TYPE C2

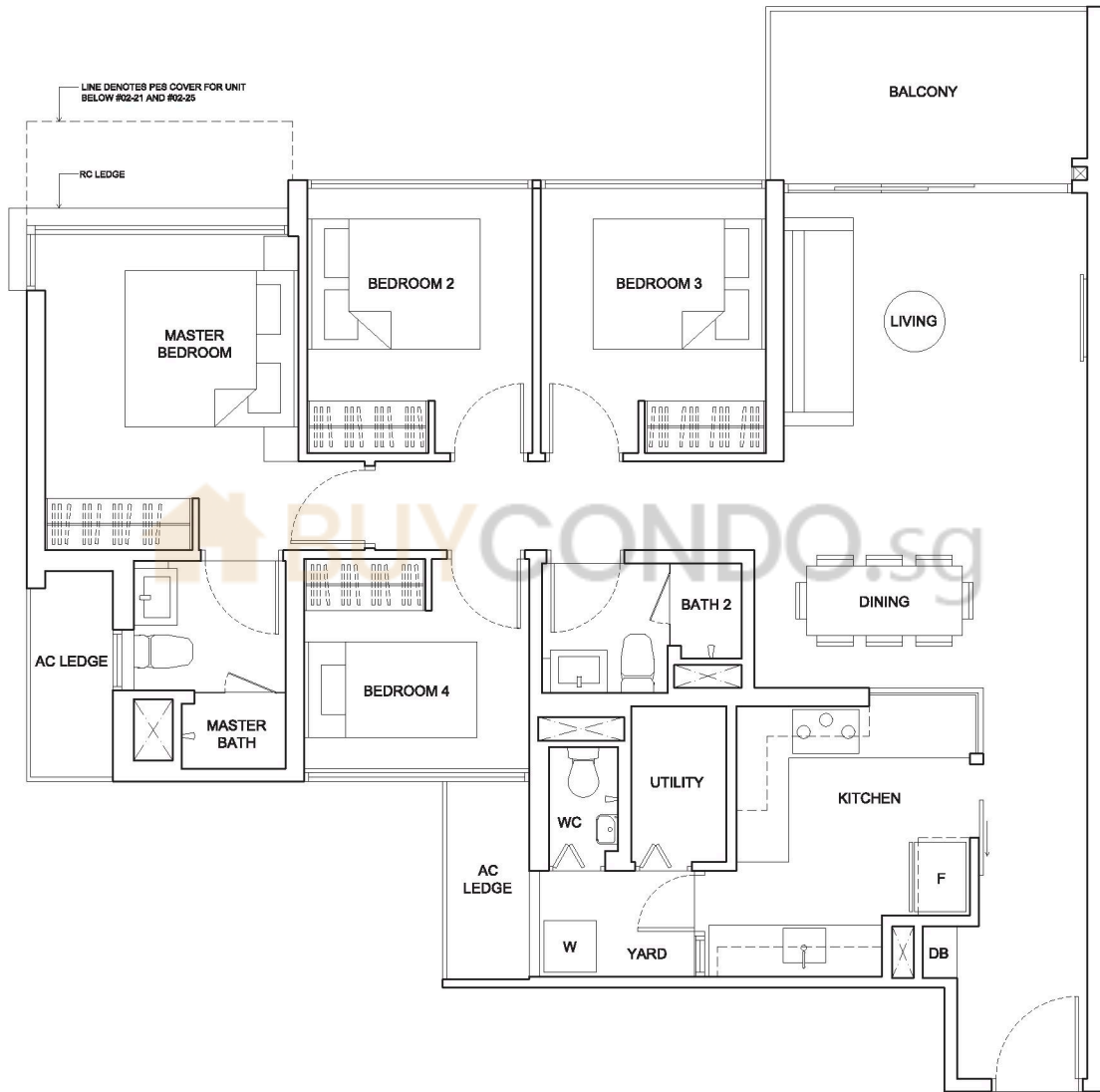
4-BEDROOM

109sq m (1173sq ft)

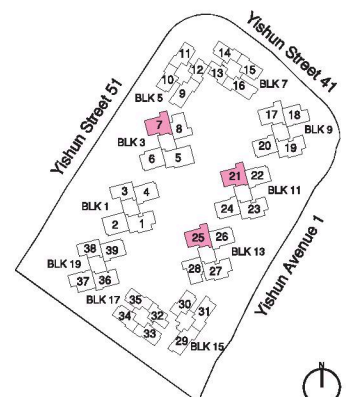
BLK 3
#02-07 to #13-07

BLK 11
#02-21 to #13-21

BLK 13
#02-25 to #13-25



Area includes air-con (AC) ledge, private enclosed space (PES) and void area where applicable. Some units are mirror images of the apartment plans shown in the brochure. Please refer to the key plan for orientation. The plans are subject to change as may be approved by relevant authorities. All floor plans are approximate measurements only and are subject to government resurvey.



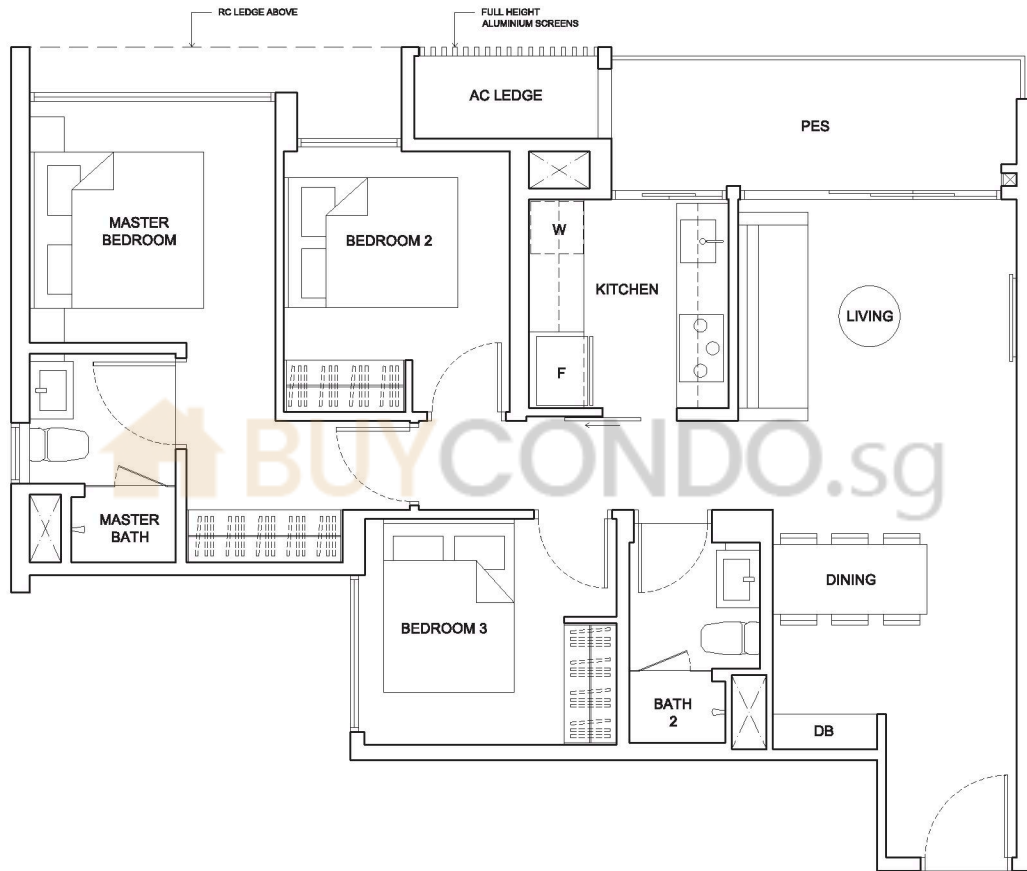
Keyplan is not drawn to scale

TYPE B4P

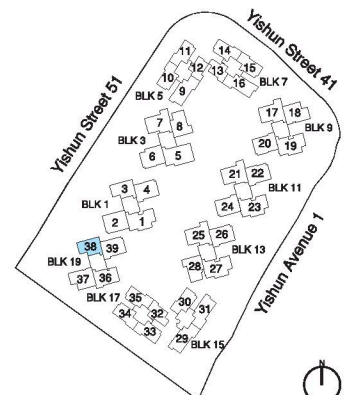
3-BEDROOM

83sqm (893sq ft)

BLK 19
#01-38



Area includes air-con (AC) ledge, private enclosed space (PES) and void area where applicable. Some units are mirror images of the apartment plans shown in the brochure. Please refer to the key plan for orientation. The plans are subject to change as may be approved by relevant authorities. All floor plans are approximate measurements only and are subject to government resurvey.



Keyplan is not drawn to scale

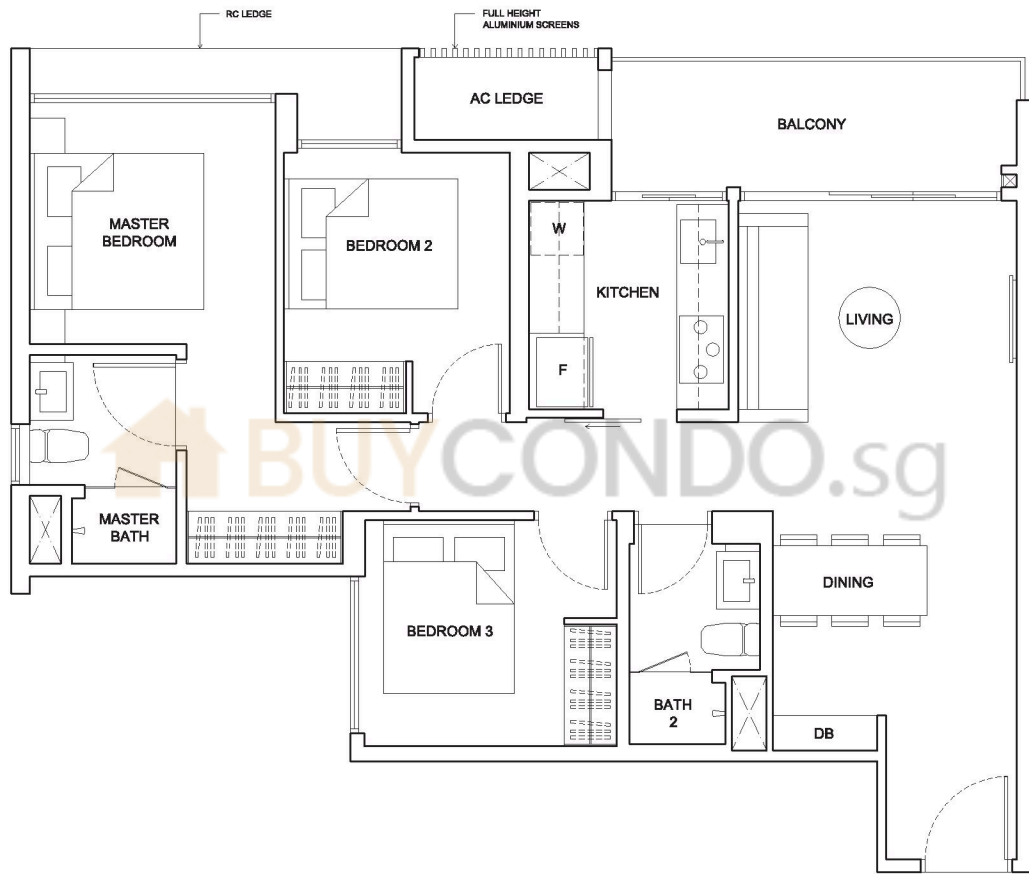
TYPE B4

3-BEDROOM

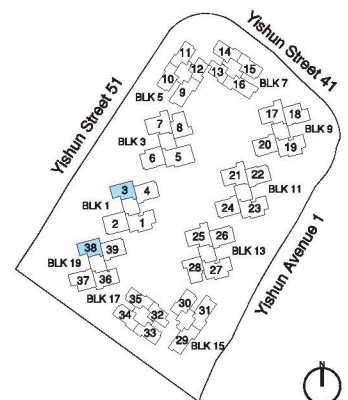
83sq m (893sq ft)

BLK 1
#02-03 to #13-03

BLK 19
#02-38 to #13-38



Area includes air-con (AC) ledge, private enclosed space (PES) and void area where applicable. Some units are mirror images of the apartment plans shown in the brochure. Please refer to the key plan for orientation. The plans are subject to change as may be approved by relevant authorities. All floor plans are approximate measurements only and are subject to government resurvey.



Keyplan is not drawn to scale



TYPE B8

**3-BEDROOM
PREMIUM**
95sq m (1023sq ft)

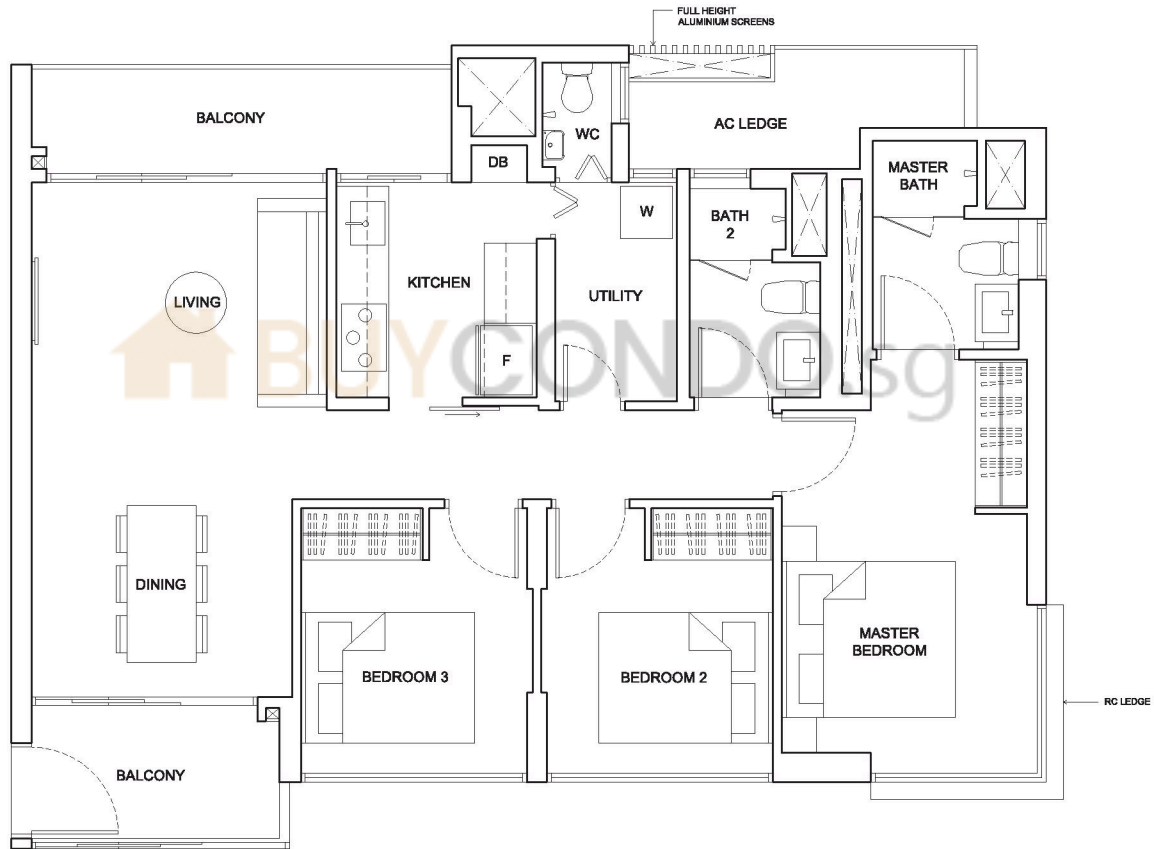
BLK 1
#03-04 to #13-04

BLK 9
#02-20 to #13-20

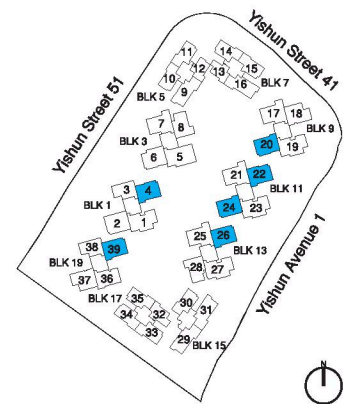
BLK 11
#02-22 to #13-22
#02-24 to #13-24

BLK 13
#02-26 to #13-26

BLK 19
#02-39 to #13-39



Area includes air-con (AC) ledge, private enclosed space (PES) and void area where applicable. Some units are mirror images of the apartment plans shown in the brochure. Please refer to the key plan for orientation. The plans are subject to change as may be approved by relevant authorities. All floor plans are approximate measurements only and are subject to government resurvey.



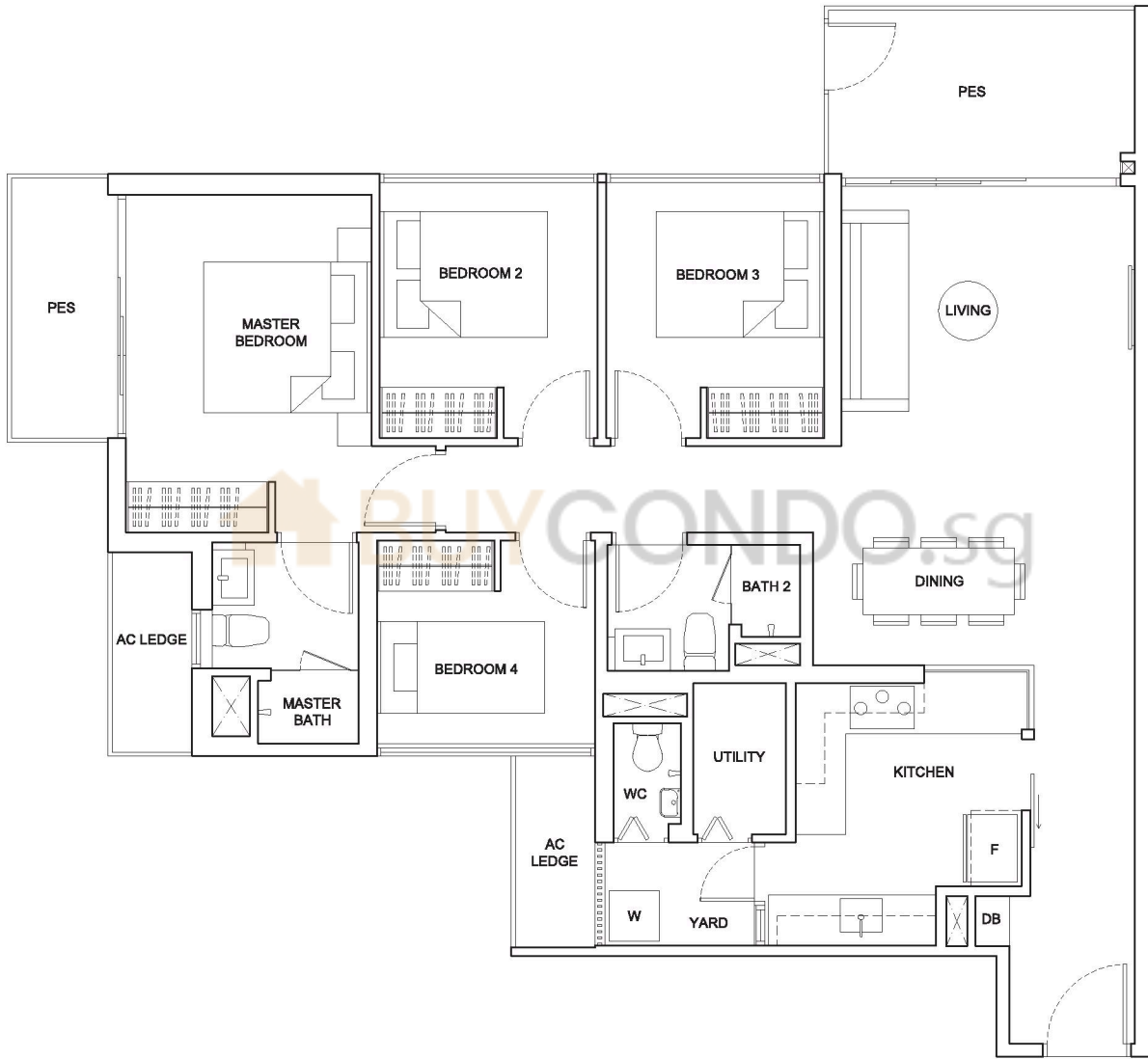
Keyplan is not drawn to scale

4-BEDROOM

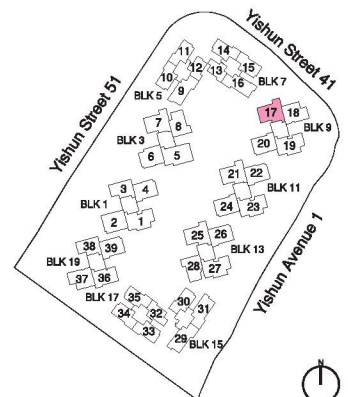
115sq m (1238sq ft)

BLK 9
#01-17

TYPE C2-2P



Area includes air-con (AC) ledge, private enclosed space (PES) and void area where applicable. Some units are mirror images of the apartment plans shown in the brochure. Please refer to the key plan for orientation. The plans are subject to change as may be approved by relevant authorities. All floor plans are approximate measurements only and are subject to government resurvey.



Keyplan is not drawn to scale

TYPE B5P

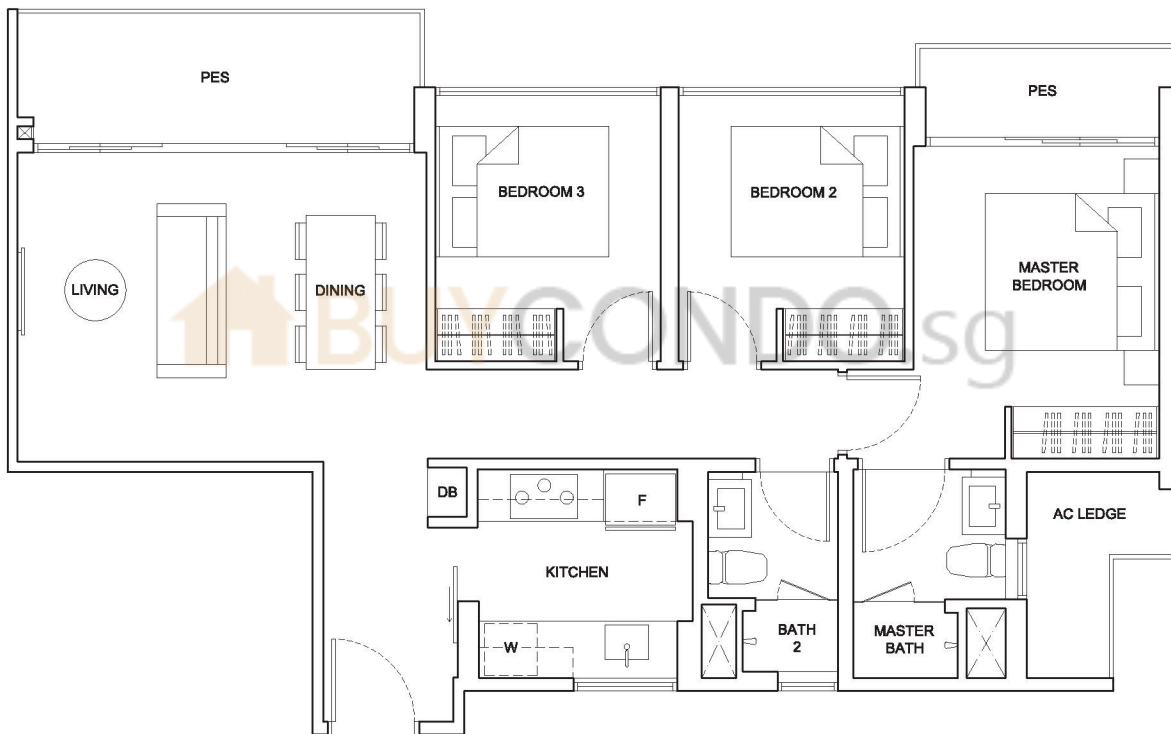
3-BEDROOM

88sq m (947sq ft)

BLK 5
#01-10*

BLK 7
#01-15

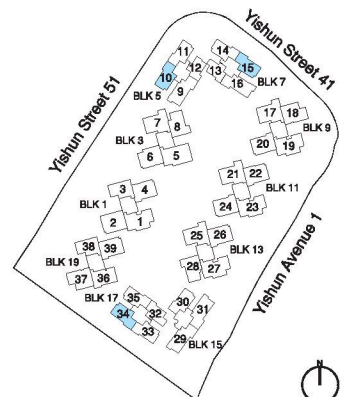
BLK 17
#01-34



* Mirror Unit



Area includes air-con (AC) ledge, private enclosed space (PES) and void area where applicable. Some units are mirror images of the apartment plans shown in the brochure. Please refer to the key plan for orientation. The plans are subject to change as may be approved by relevant authorities. All floor plans are approximate measurements only and are subject to government resurvey.



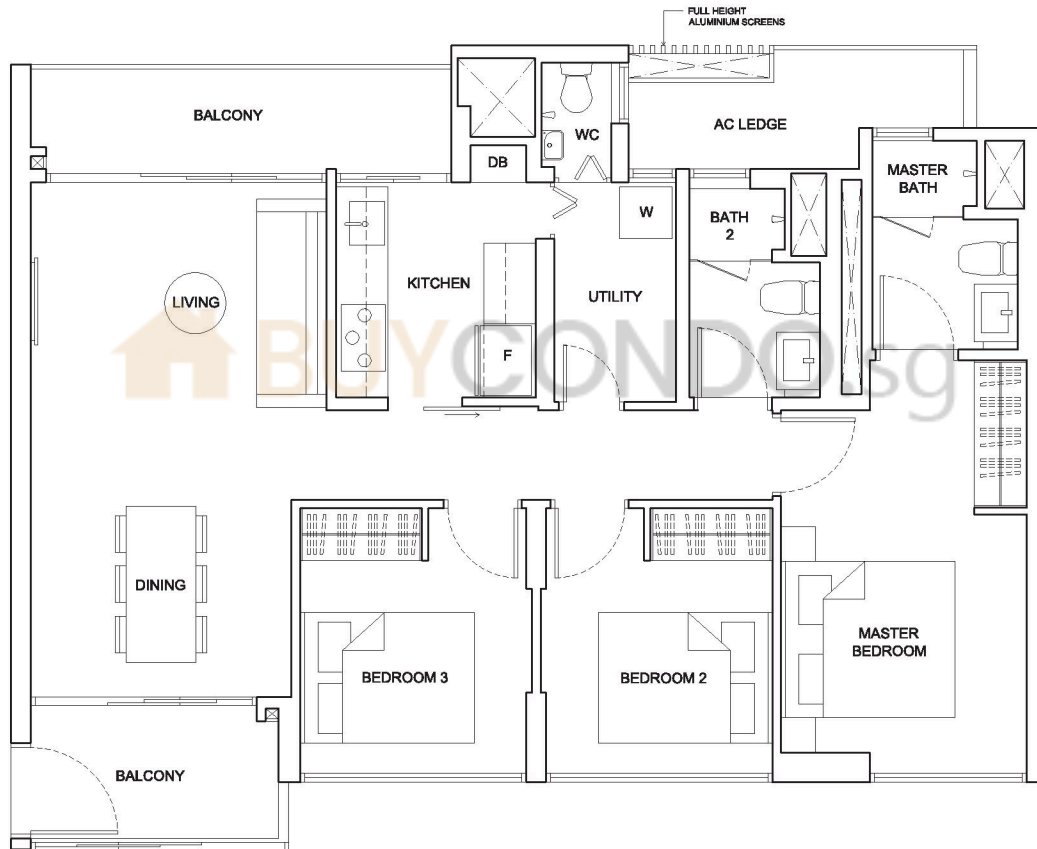
Keyplan is not drawn to scale

TYPE B8-2

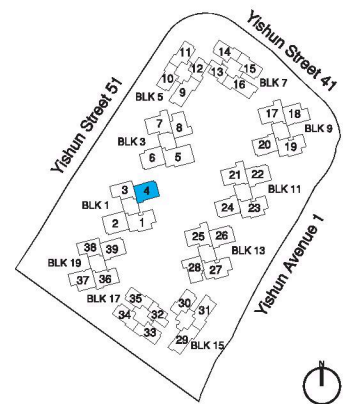


**3-BEDROOM
PREMIUM**
95sq m (1023sq ft)

BLK 1
#02-04



Area includes air-con (AC) ledge, private enclosed space (PES) and void area where applicable. Some units are mirror images of the apartment plans shown in the brochure. Please refer to the key plan for orientation. The plans are subject to change as may be approved by relevant authorities. All floor plans are approximate measurements only and are subject to government resurvey.



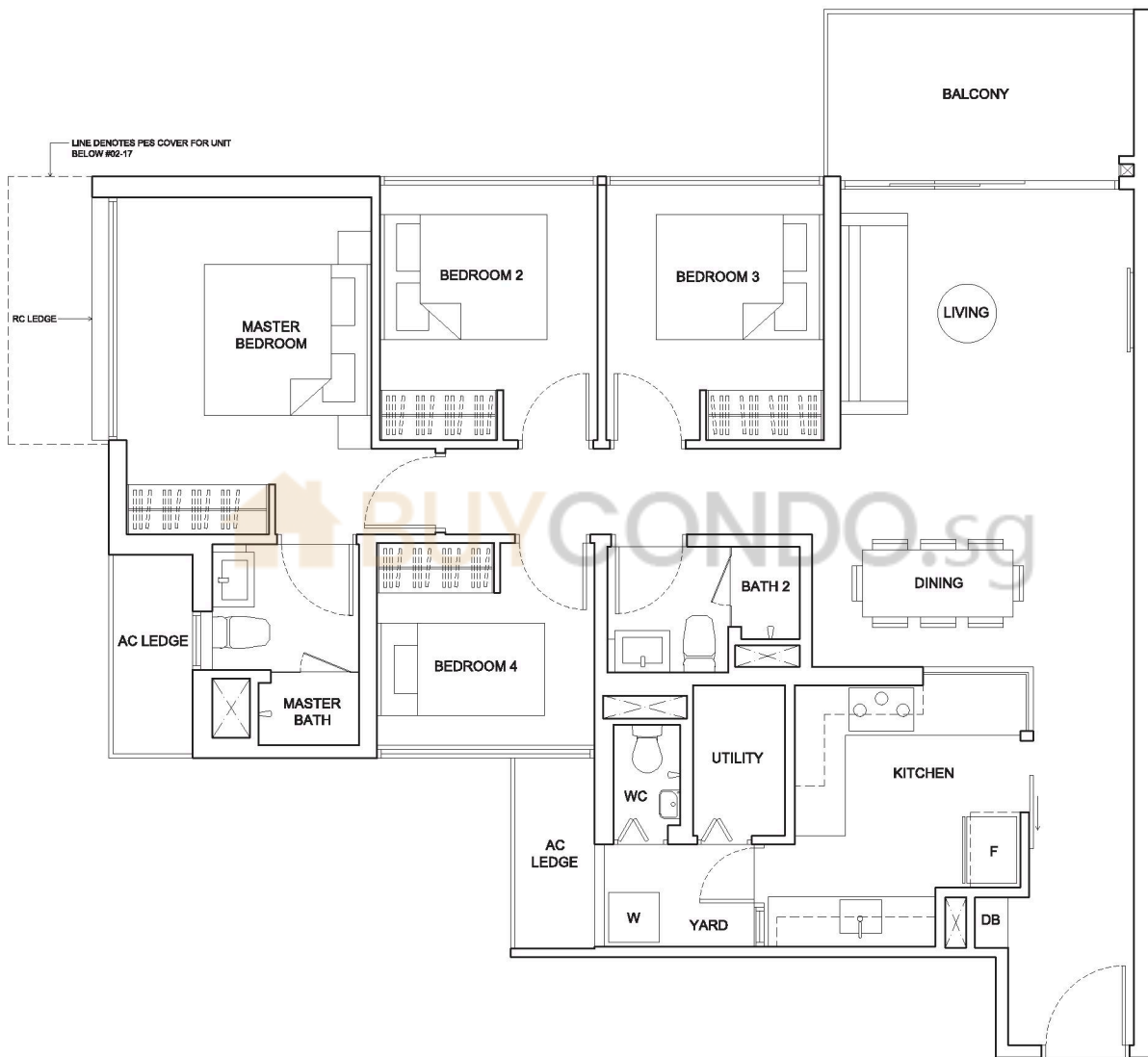
Keyplan is not drawn to scale

4-BEDROOM

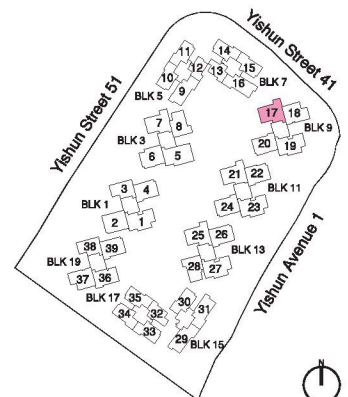
111sq m (1195sq ft)

BLK 9
#02-17 to #13-17

TYPE C2-2



Area includes air-con (AC) ledge, private enclosed space (PES) and void area where applicable. Some units are mirror images of the apartment plans shown in the brochure. Please refer to the key plan for orientation. The plans are subject to change as may be approved by relevant authorities. All floor plans are approximate measurements only and are subject to government resurvey.



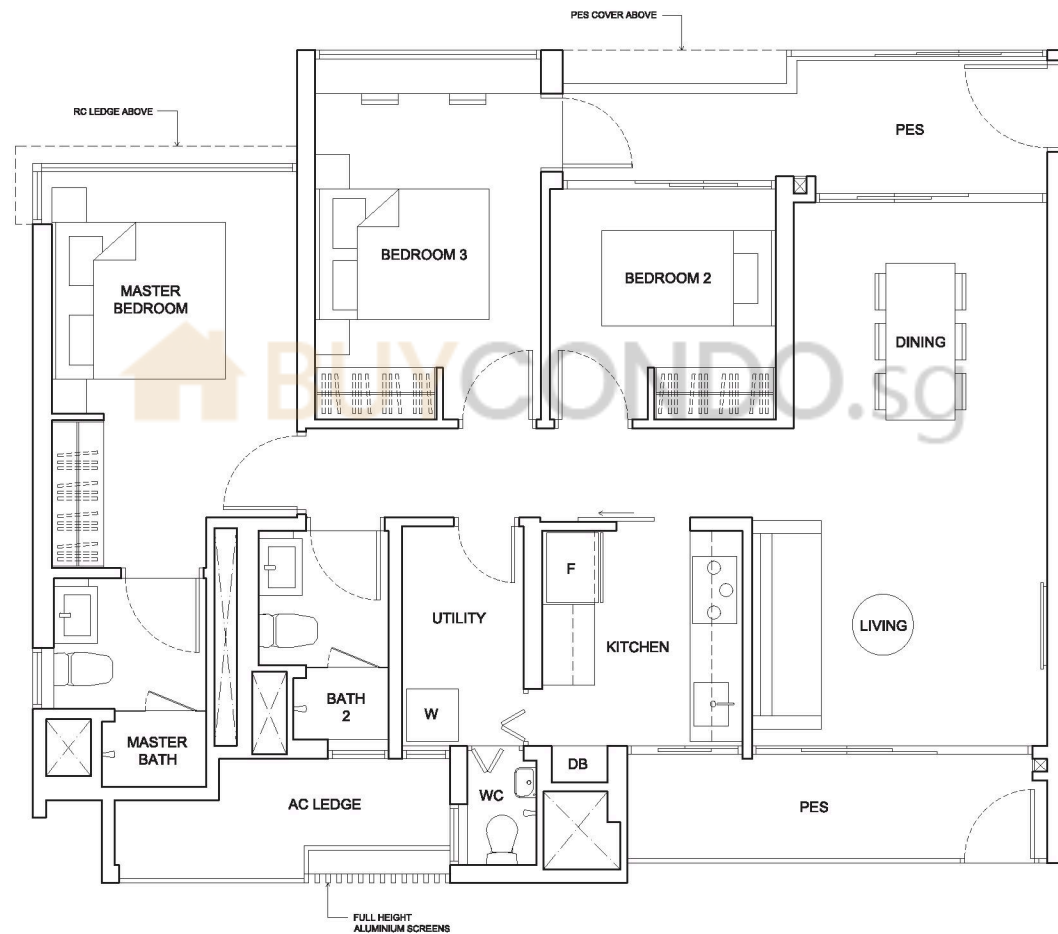
Keyplan is not drawn to scale

TYPE B9P

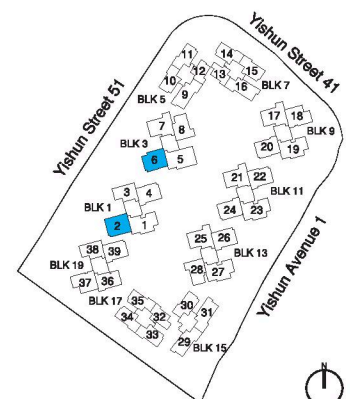
**3-BEDROOM
PREMIUM**
100sq m (1076sq ft)

BLK 1
#01-02

BLK 3
#01-06



Area includes air-con (AC) ledge, private enclosed space (PES) and void area where applicable. Some units are mirror images of the apartment plans shown in the brochure. Please refer to the key plan for orientation. The plans are subject to change as may be approved by relevant authorities. All floor plans are approximate measurements only and are subject to government resurvey.



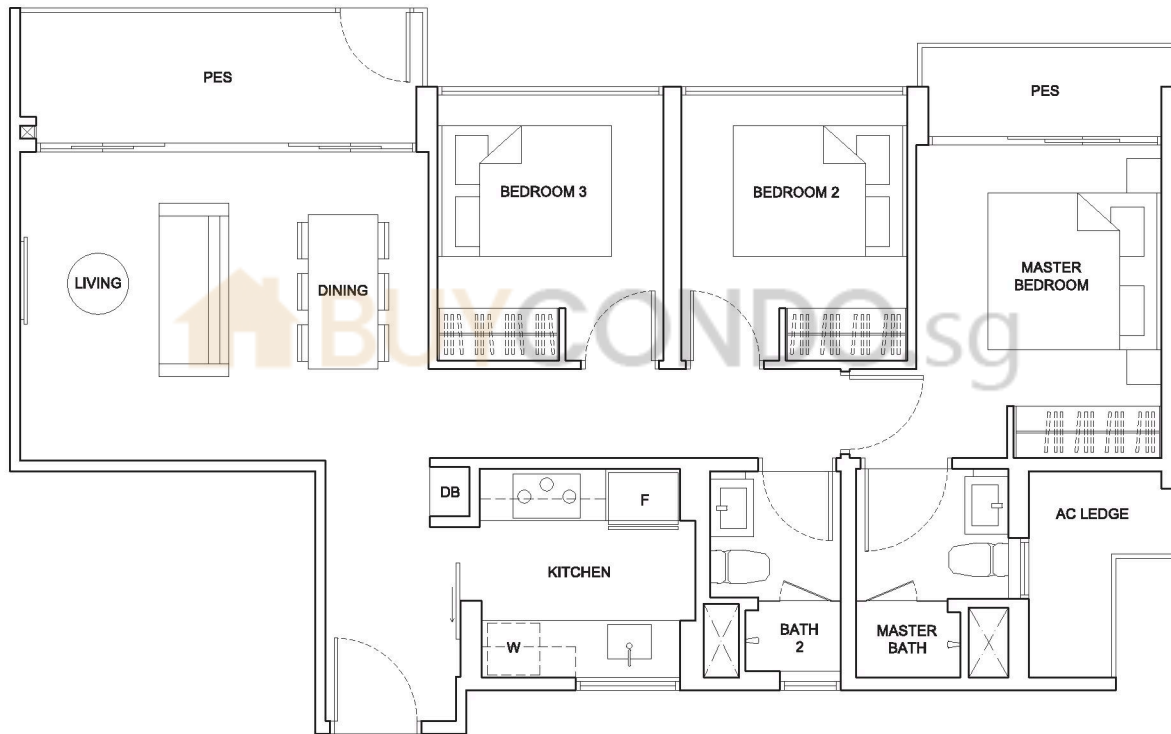
Keyplan is not drawn to scale

TYPE B5-1P

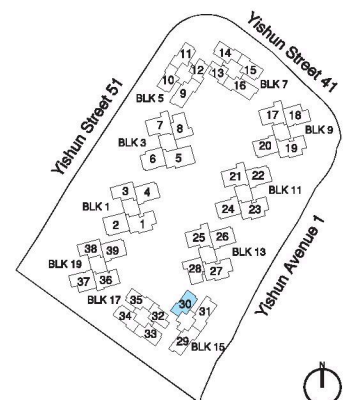
3-BEDROOM

88sq m (947sq ft)

BLK 15
#01-30



Area includes air-con (AC) ledge, private enclosed space (PES) and void area where applicable. Some units are mirror images of the apartment plans shown in the brochure. Please refer to the key plan for orientation. The plans are subject to change as may be approved by relevant authorities. All floor plans are approximate measurements only and are subject to government resurvey.



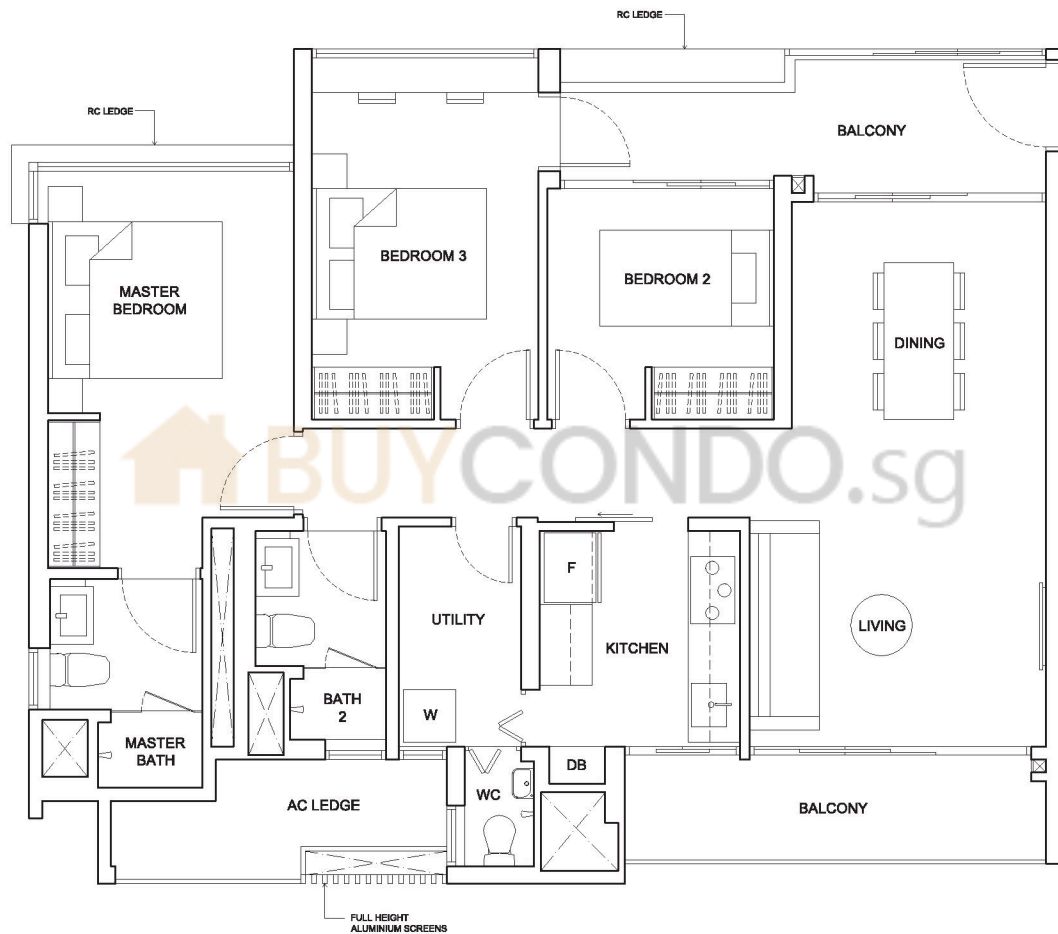
Keyplan is not drawn to scale

TYPE B9

**3-BEDROOM
PREMIUM**
100sq m (1076sq ft)

BLK 1
#02-02 to #13-02

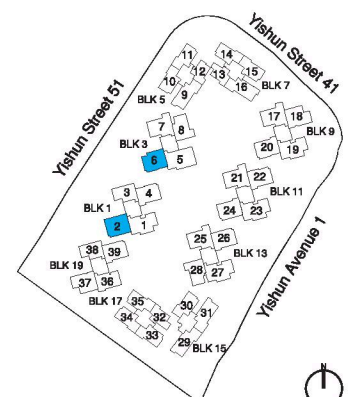
BLK 3
#02-06 to #13-06



BUYCONDO.sg



Area includes air-con (AC) ledge, private enclosed space (PES) and void area where applicable. Some units are mirror images of the apartment plans shown in the brochure. Please refer to the key plan for orientation. The plans are subject to change as may be approved by relevant authorities. All floor plans are approximate measurements only and are subject to government resurvey.



Keyplan is not drawn to scale

TYPE B5

3-BEDROOM

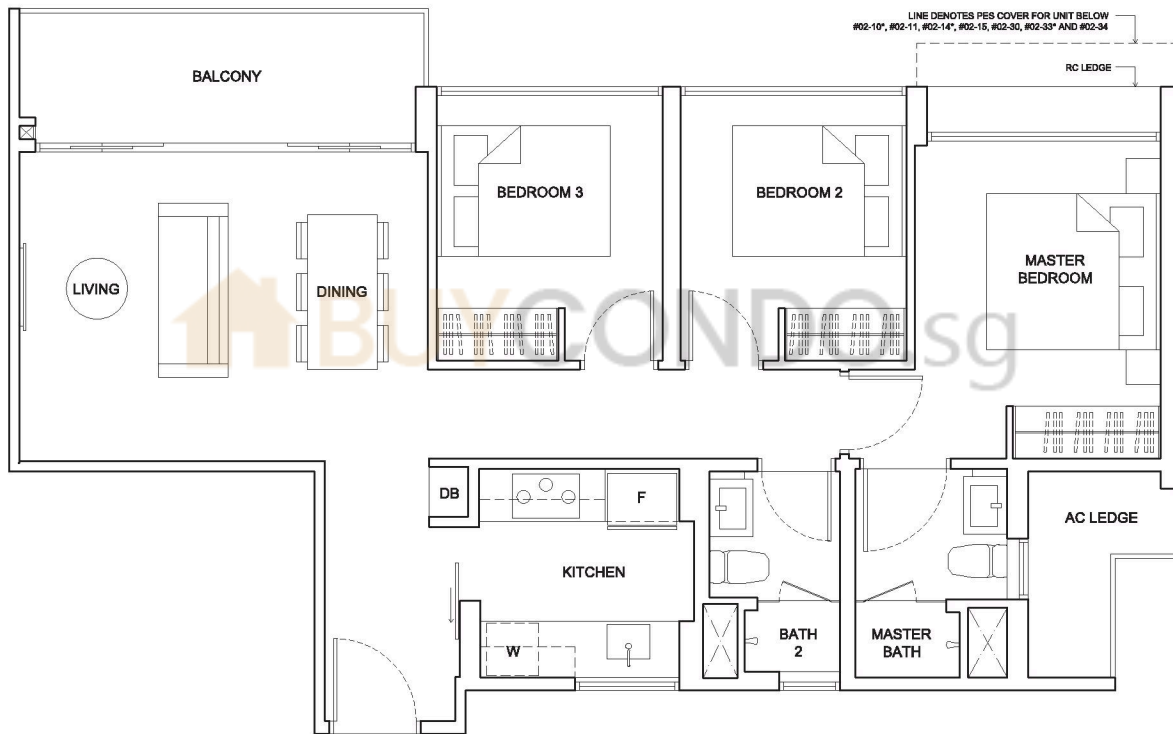
85sq m (915sq ft)

BLK 5
#02-10* to #13-10*
#02-11 to #13-11

BLK 7
#02-14* to #13-14*
#02-15 to #13-15

BLK 15
#02-30 to #13-30

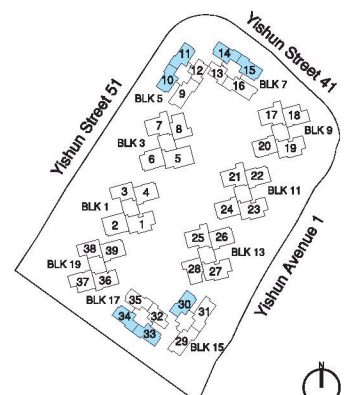
BLK 17
#02-33* to #13-33*
#02-34 to #13-34



* Mirror Unit



Area includes air-con (AC) ledge, private enclosed space (PES) and void area where applicable. Some units are mirror images of the apartment plans shown in the brochure. Please refer to the key plan for orientation. The plans are subject to change as may be approved by relevant authorities. All floor plans are approximate measurements only and are subject to government resurvey.



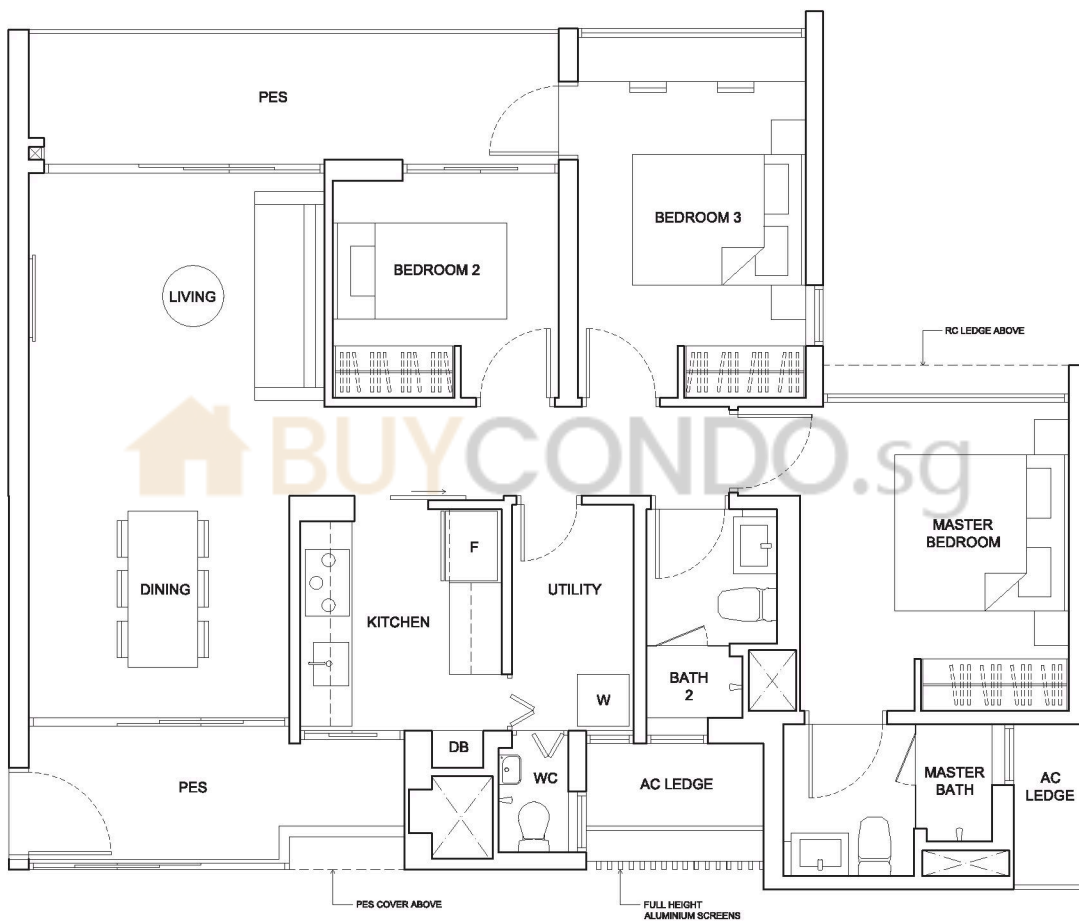
Keyplan is not drawn to scale

TYPE B10P

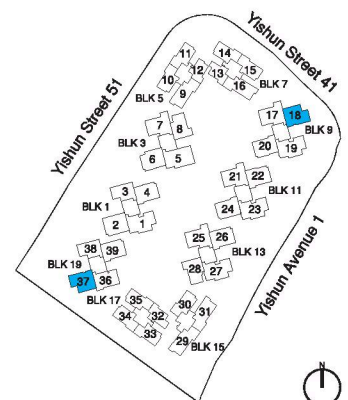
**3-BEDROOM
PREMIUM**
102sq m (1098sq ft)

BLK 9
#01-18

BLK 19
#01-37



Area includes air-con (AC) ledge, private enclosed space (PES) and void area where applicable. Some units are mirror images of the apartment plans shown in the brochure. Please refer to the key plan for orientation. The plans are subject to change as may be approved by relevant authorities. All floor plans are approximate measurements only and are subject to government resurvey.



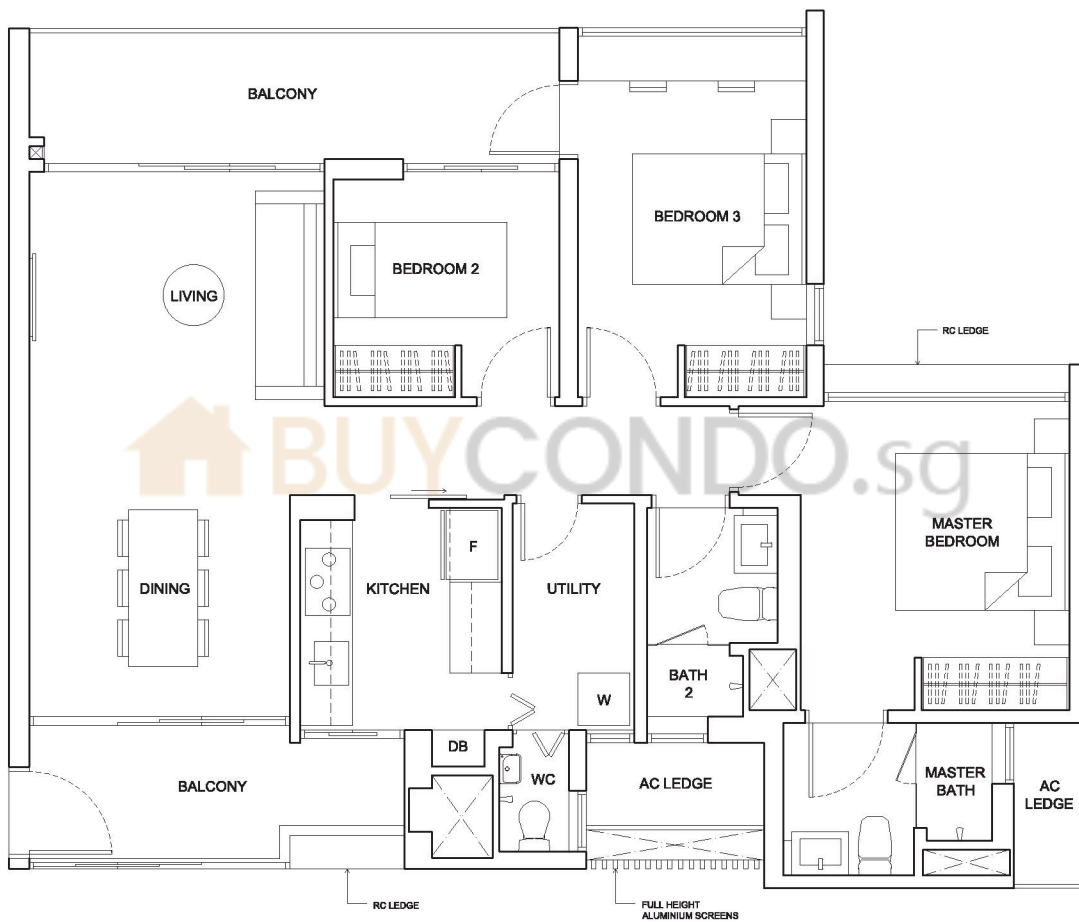
Keyplan is not drawn to scale

TYPE B10

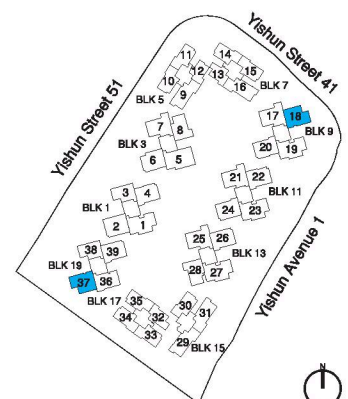
**3-BEDROOM
PREMIUM**
102sq m (1098sq ft)

BLK 9
#02-18 to #13-18

BLK 19
#02-37 to #13-37



Area includes air-con (AC) ledge, private enclosed space (PES) and void area where applicable. Some units are mirror images of the apartment plans shown in the brochure. Please refer to the key plan for orientation. The plans are subject to change as may be approved by relevant authorities. All floor plans are approximate measurements only and are subject to government resurvey.



Keyplan is not drawn to scale