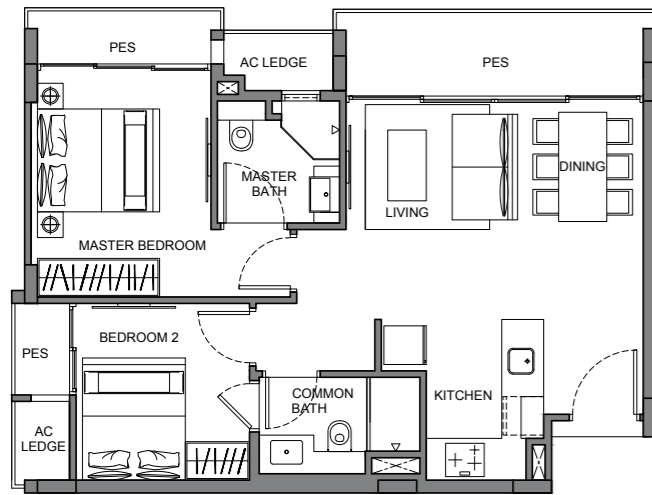
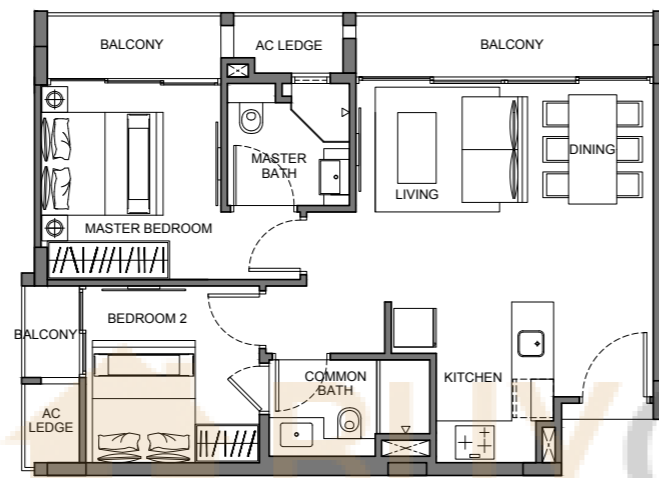


2-Bedroom

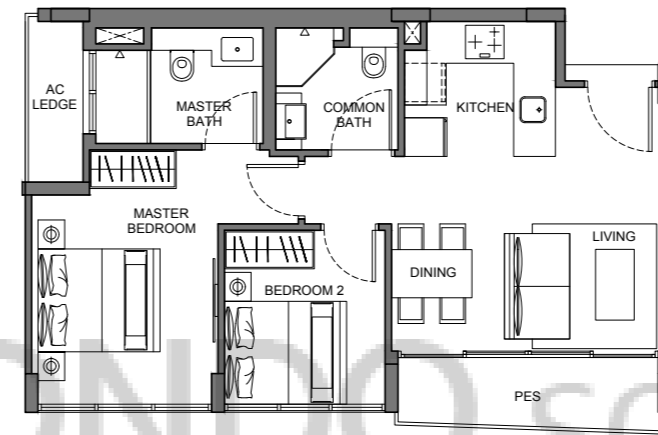
2-Bedroom



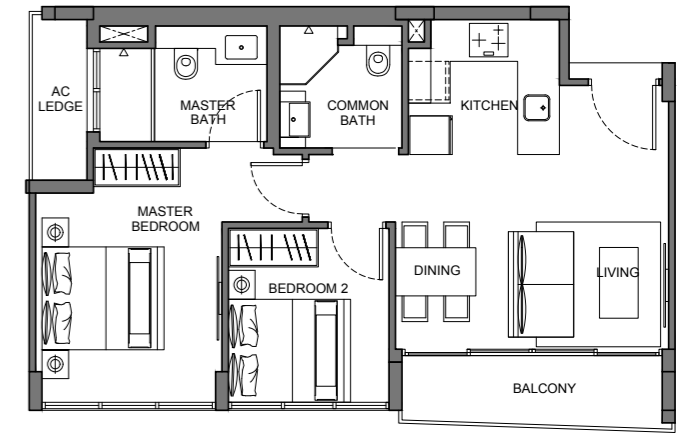
TYPE A1
2-Bedroom
70 sq m / 753 sq ft
#01-06



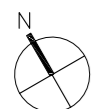
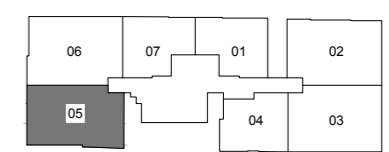
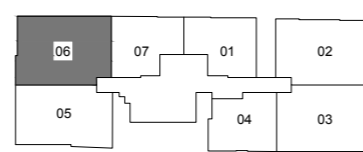
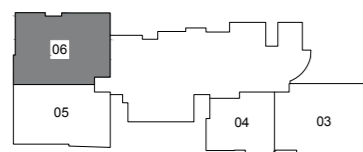
TYPE A2
2-Bedroom
67 sq m / 721 sq ft
#02-06, #03-06 & #04-06



TYPE B1
2-Bedroom
61 sq m / 657 sq ft
#01-05



TYPE B2
2-Bedroom
61 sq m / 657 sq ft
#02-05, #03-05 & #04-05



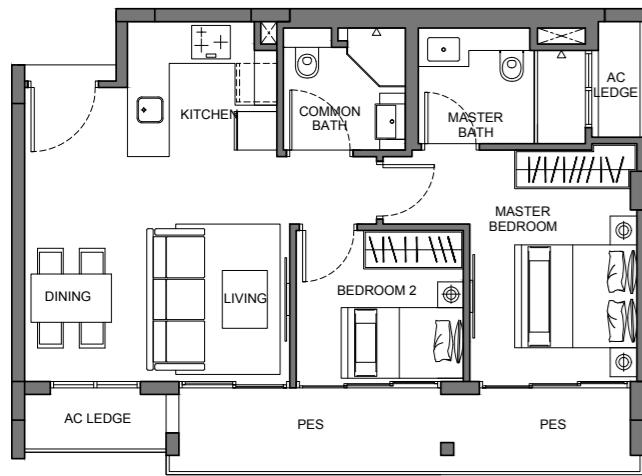
Floor areas are inclusive of PES, balconies, A/C ledges and voids. Floor area are approximate and subject to final survey. The plans are subject to changes as required or approved by relevant authorities. The balconies shall not be enclosed unless with approved balcony screens.



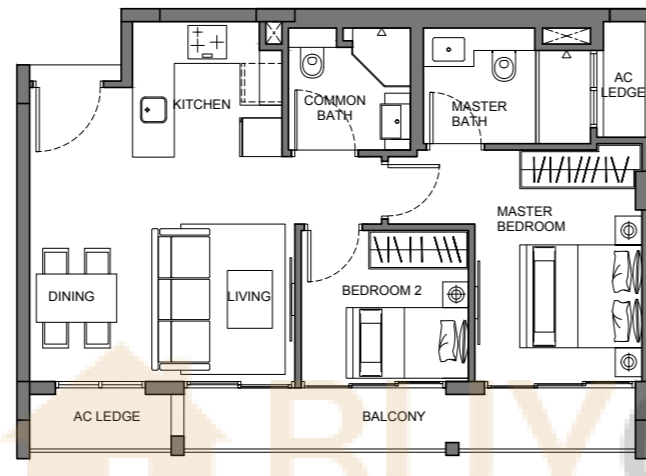
Floor areas are inclusive of PES, balconies, A/C ledges and voids. Floor area are approximate and subject to final survey. The plans are subject to changes as required or approved by relevant authorities. The balconies shall not be enclosed unless with approved balcony screens.

2-Bedroom

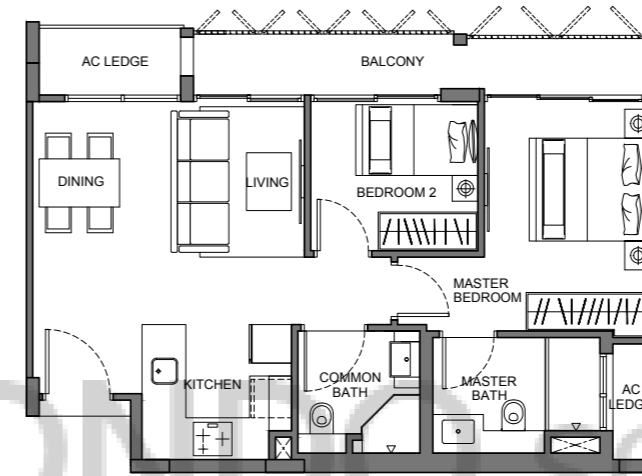
2-Bedroom



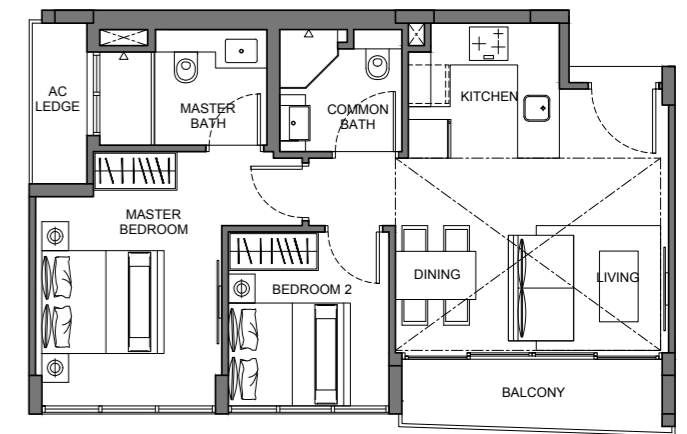
TYPE B3
2-Bedroom
67 sq m / 721 sq ft
#01-03



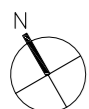
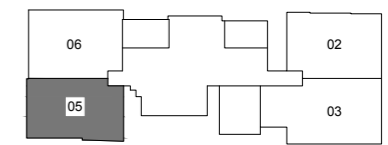
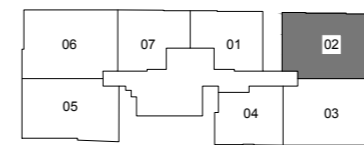
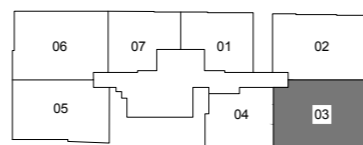
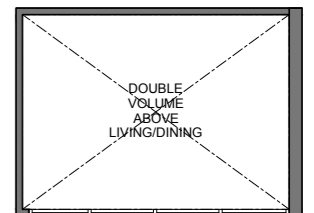
TYPE B4
2-Bedroom
64 sq m / 689 sq ft
#02-03



TYPE B5
2-Bedroom
64 sq m / 689 sq ft
#02-02



TYPE B6
2-Bedroom
74 sq m / 797 sq ft
#05-05

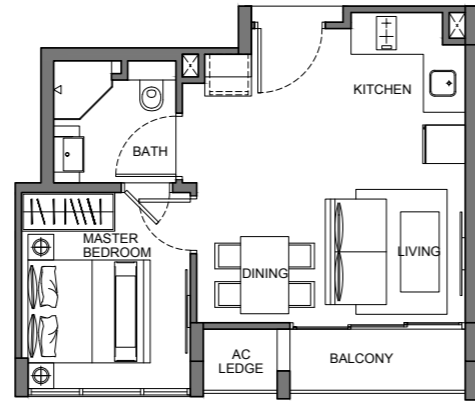


Floor areas are inclusive of PES, balconies, A/C ledges and voids. Floor area are approximate and subject to final survey. The plans are subject to changes as required or approved by relevant authorities. The balconies shall not be enclosed unless with approved balcony screens.

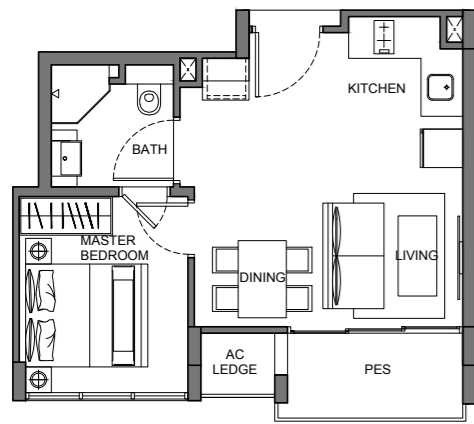


Floor areas are inclusive of PES, balconies, A/C ledges and voids. Floor area are approximate and subject to final survey. The plans are subject to changes as required or approved by relevant authorities. The balconies shall not be enclosed unless with approved balcony screens.

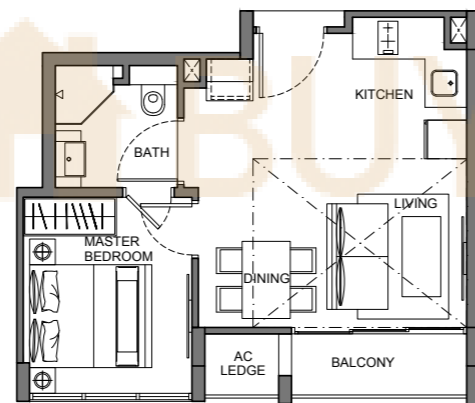
1-Bedroom



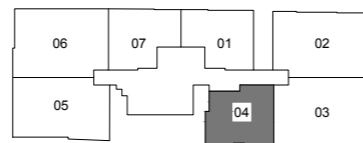
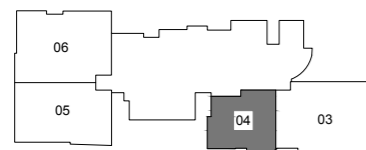
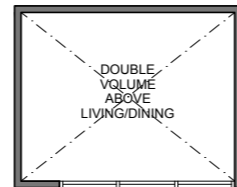
TYPE C2
1-Bedroom
38 sq m / 409 sq ft
#02-04



TYPE C1
1-Bedroom
39 sq m / 420 sq ft
#01-04

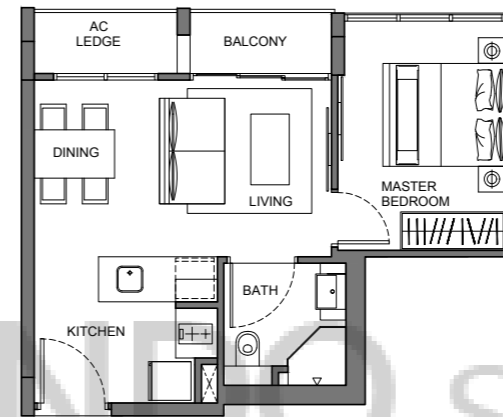


TYPE C3
1-Bedroom
47 sq m / 506 sq ft
#03-04

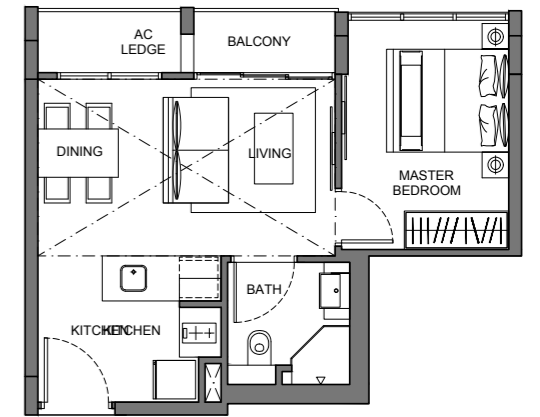


Floor areas are inclusive of PES, balconies, A/C ledges and voids. Floor area are approximate and subject to final survey. The plans are subject to changes as required or approved by relevant authorities. The balconies shall not be enclosed unless with approved balcony screens.

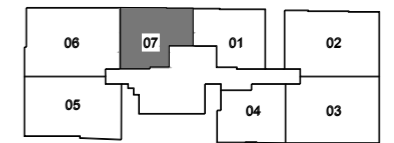
1-Bedroom



TYPE D1
1-Bedroom
40 sq m / 431 sq ft
#02-07 & #03-07



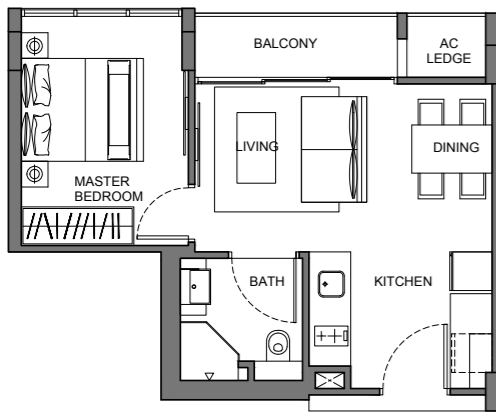
TYPE D2
1-Bedroom
53 sq m / 570 sq ft
#04-07



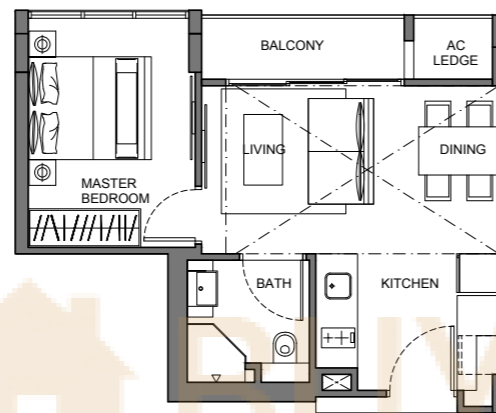
Floor areas are inclusive of PES, balconies, A/C ledges and voids. Floor area are approximate and subject to final survey. The plans are subject to changes as required or approved by relevant authorities. The balconies shall not be enclosed unless with approved balcony screens.

1-Bedroom

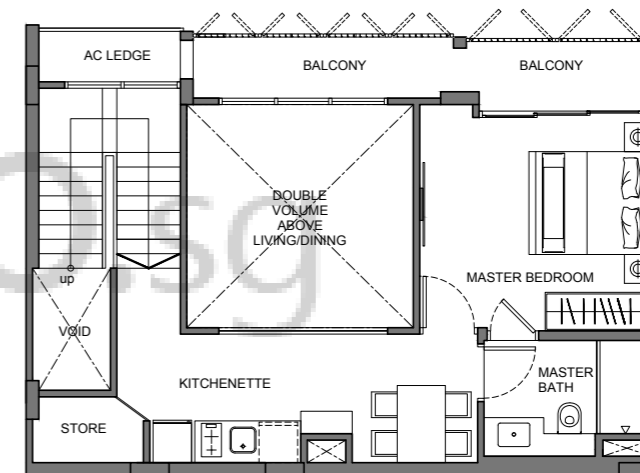
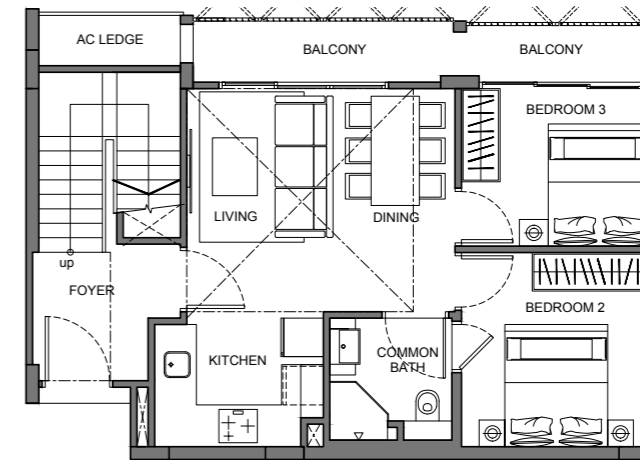
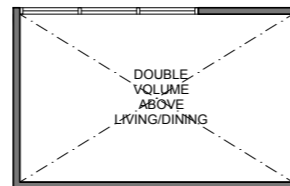
3-Bedroom



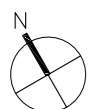
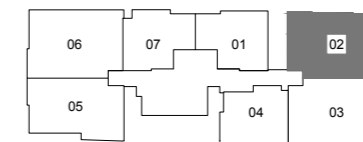
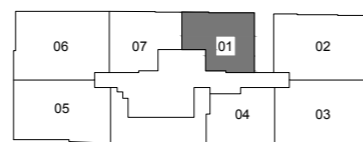
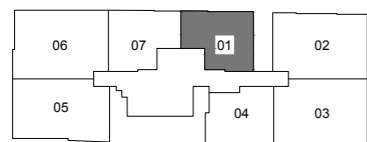
TYPE D3
1-Bedroom
39 sq m / 420 sq ft
#02-01 & #03-01



TYPE D4
2-Bedroom
51 sq m / 549 sq ft
#04-01



TYPE E1
3-Bedroom
129 sq m / 1389 sq ft
#03-02



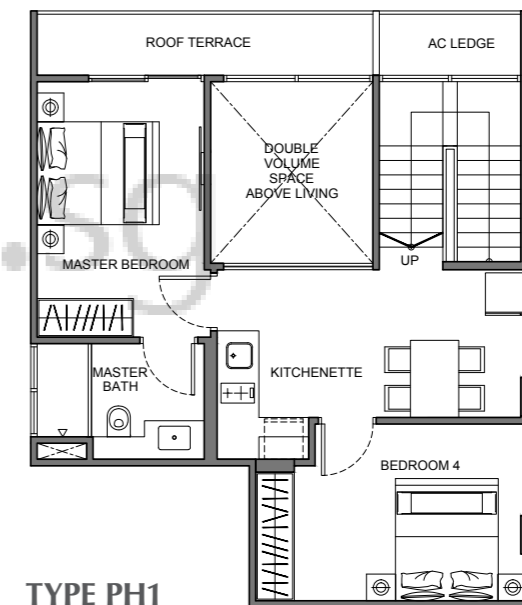
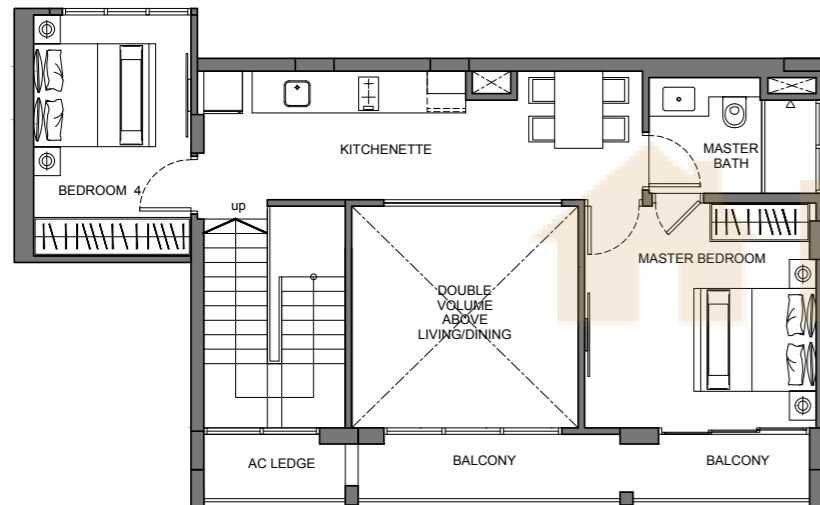
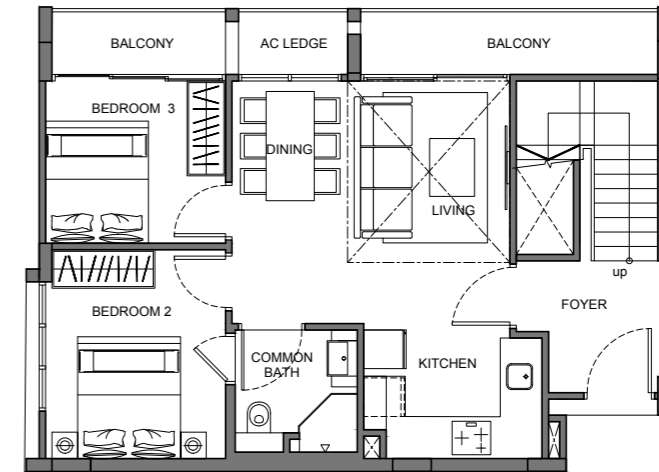
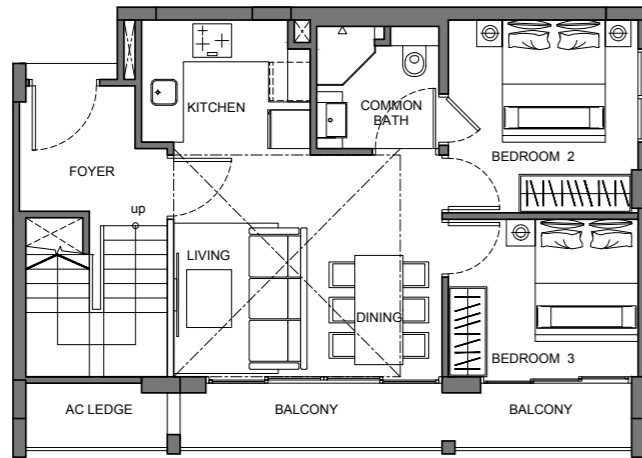
Floor areas are inclusive of PES, balconies, A/C ledges and voids. Floor area are approximate and subject to final survey. The plans are subject to changes as required or approved by relevant authorities. The balconies shall not be enclosed unless with approved balcony screens.



Floor areas are inclusive of PES, balconies, A/C ledges and voids. Floor area are approximate and subject to final survey. The plans are subject to changes as required or approved by relevant authorities. The balconies shall not be enclosed unless with approved balcony screens.

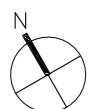
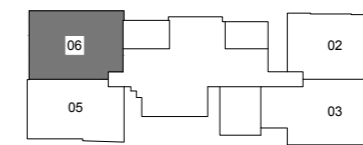
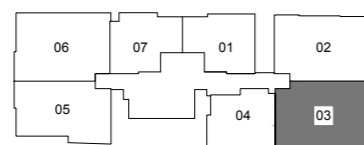
4-Bedroom

Penthouse



TYPE E2
4-Bedroom
140 sq m / 1507 sq ft
#03-03

TYPE PH1
4-Bedroom
131 sq m / 1410 sq ft
#05-06



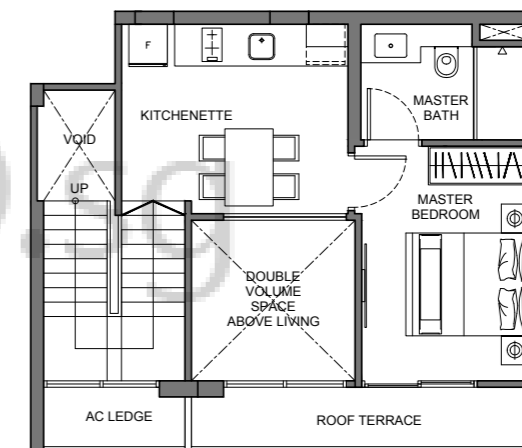
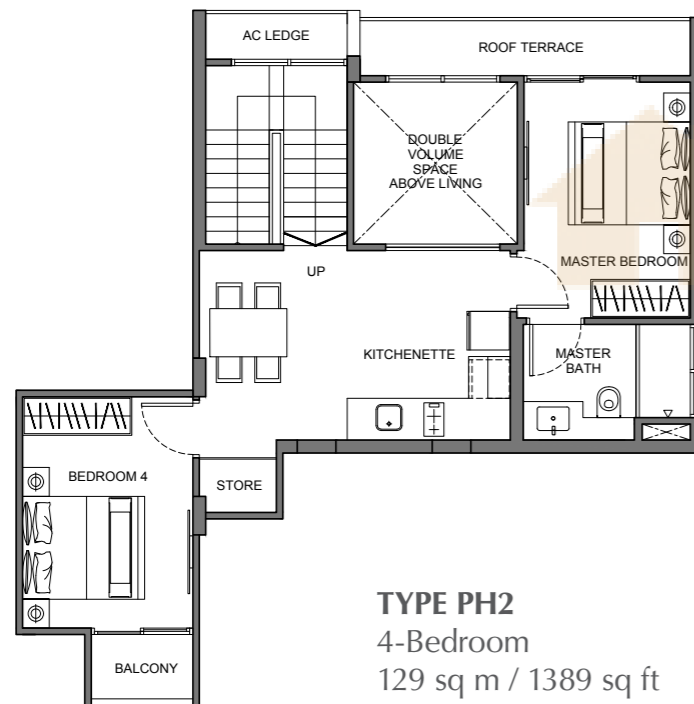
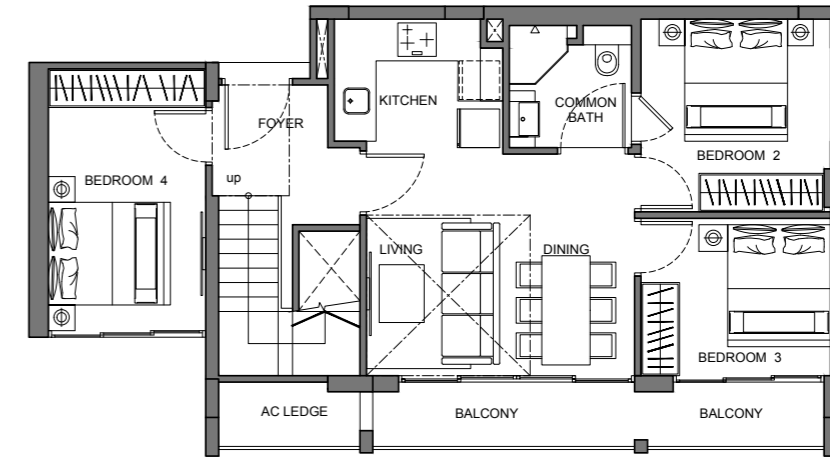
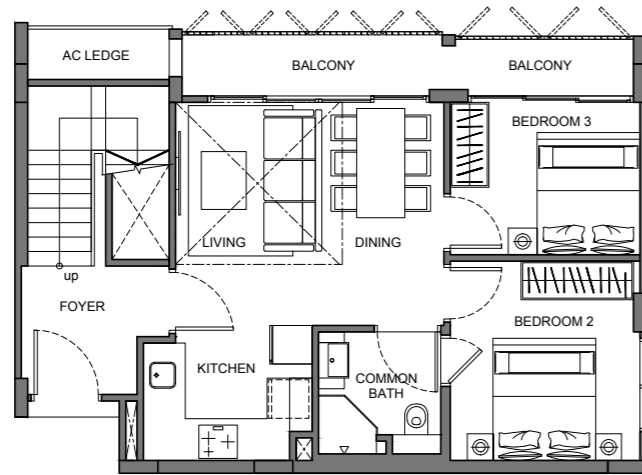
Floor areas are inclusive of PES, balconies, A/C ledges and voids. Floor area are approximate and subject to final survey. The plans are subject to changes as required or approved by relevant authorities. The balconies shall not be enclosed unless with approved balcony screens.



Floor areas are inclusive of PES, balconies, A/C ledges and voids. Floor area are approximate and subject to final survey. The plans are subject to changes as required or approved by relevant authorities. The balconies shall not be enclosed unless with approved balcony screens.

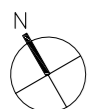
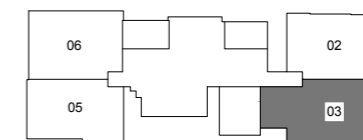
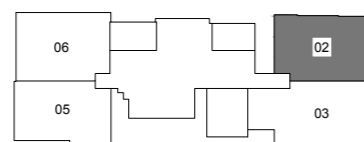
Penthouse

Penthouse



TYPE PH2
4-Bedroom
129 sq m / 1389 sq ft
#05-02

TYPE PH3
4-Bedroom
126 sq m / 1356 sq ft
#05-03



Floor areas are inclusive of PES, balconies, A/C ledges and voids. Floor area are approximate and subject to final survey. The plans are subject to changes as required or approved by relevant authorities. The balconies shall not be enclosed unless with approved balcony screens.



Floor areas are inclusive of PES, balconies, A/C ledges and voids. Floor area are approximate and subject to final survey. The plans are subject to changes as required or approved by relevant authorities. The balconies shall not be enclosed unless with approved balcony screens.