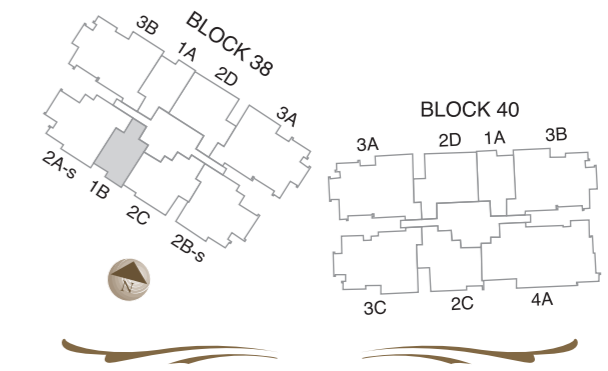
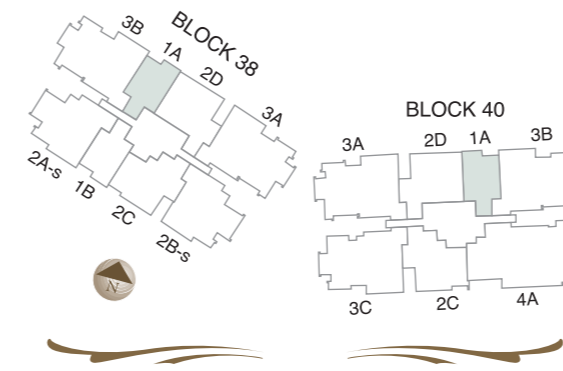


# Choose your Laurels.

Here, at The Laurels is where your heart is. Designed to match your preferred lifestyle.

Take your pick from varying apartment sizes and layouts. There's one to mark your choice of distinction.



38 CAIRNHILL ROAD

40 CAIRNHILL ROAD

Unit #02-06 to #18-06

Unit #02-14 to #18-14 (mirror image)

Unit #02-03 to #11-03

Unit #15-03 to #18-03

Type PH-3 #19-01 (With Roof Terrace and Private Swimming Pool)			
2B-s #18-01	2C #18-02	1B #18-03	2A-s #18-04
2B-s #17-01	2C #17-02	1B #17-03	2A-s #17-04
2B-s #16-01	2C #16-02	1B #16-03	2A-s #16-04
2B-s #15-01	2C #15-02	1B #15-03	2A-s #15-04
2B-s #14-01	2C #14-02	SKY TERRACE	
2B-s #13-01	2C #13-02		
2B-s #12-01	2C #12-02		
2B-s #11-01	2C #11-02	1B #11-03	2A-s #11-04
2B-s #10-01	2C #10-02	1B #10-03	2A-s #10-04
2B-s #09-01	2C #09-02	1B #09-03	2A-s #09-04
2B-s #08-01	2C #08-02	1B #08-03	2A-s #08-04
2B-s #07-01	2C #07-02	1B #07-03	2A-s #07-04
2B-s #06-01	2C #06-02	1B #06-03	2A-s #06-04
2B-s #05-01	2C #05-02	1B #05-03	2A-s #05-04
2B-s #04-01	2C #04-02	1B #04-03	2A-s #04-04
		1B #03-03	2A-s #03-04
		1B #02-03	2A-s #02-04
		1B-p #01-03	2A-sp #01-04

BASEMENT 1 CARPARK

BASEMENT 2 CARPARK

Type PH-2 #19-08 (With Roof Terrace and Private Swimming Pool)			
3B #18-05	1A #18-06	2D #18-07	3A #18-08
3B #17-05	1A #17-06	2D #17-07	3A #17-08
3B #16-05	1A #16-06	2D #16-07	3A #16-08
3B #15-05	1A #15-06	2D #15-07	3A #15-08
		2D #14-07	3A #14-08
		2D #13-07	3A #13-08
		2D #12-07	3A #12-08
3B #11-05	1A #11-06	2D #11-07	3A #11-08
3B #10-05	1A #10-06	2D #10-07	3A #10-08
3B #09-05	1A #09-06	2D #09-07	3A #09-08
3B #08-05	1A #08-06	2D #08-07	3A #08-08
3B #07-05	1A #07-06	2D #07-07	3A #07-08
3B #06-05	1A #06-06	2D #06-07	3A #06-08
3B #05-05	1A #05-06	2D #05-07	3A #05-08
3B #04-05	1A #04-06	2D #04-07	3A #04-08
3B #03-05	1A #03-06		
3B #02-05	1A #02-06		
3B-p1 #01-05	1A-p1 #01-06		

BASEMENT 1 CARPARK

BASEMENT 2 CARPARK

Type PH-1 #19-09 (With Roof Terrace and Private Swimming Pool)		
4A #18-09	2C #18-10	3C #18-11
4A #17-09	2C #17-10	3C #17-11
4A #16-09	2C #16-10	3C #16-11
4A #15-09	2C #15-10	3C #15-11
	2C #14-10	3C #14-11
	2C #13-10	3C #13-11
	2C #12-10	3C #12-11
4A #11-09	2C #11-10	3C #11-11
4A #10-09	2C #10-10	3C #10-11
4A #09-09	2C #09-10	3C #09-11
4A #08-09	2C #08-10	3C #08-11
4A #07-09	2C #07-10	3C #07-11
4A #06-09	2C #06-10	3C #06-11
4A #05-09	2C #05-10	3C #05-11
4A #04-09	2C #04-10	3C #04-11
4A #03-09		
4A #02-09		
4A-p #01-09		

BASEMENT 1 CARPARK

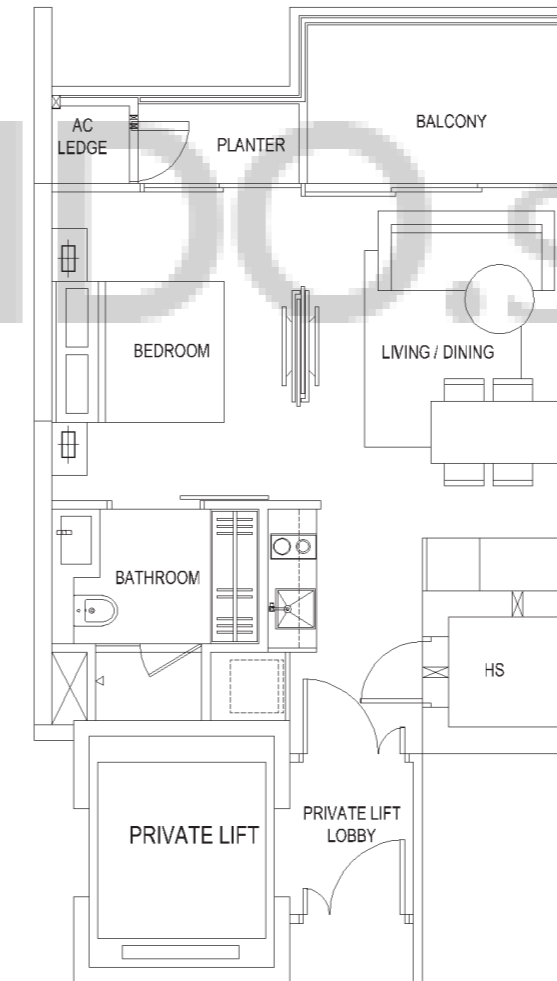
BASEMENT 2 CARPARK

Type PH-2 #19-12 (With Roof Terrace and Private Swimming Pool)			
3A #18-12	2D #18-13	1A #18-14	3B #18-15
3A #17-12	2D #17-13	1A #17-14	3B #17-15
3A #16-12	2D #16-13	1A #16-14	3B #16-15
3A #15-12	2D #15-13	1A #15-14	3B #15-15
3A #14-12	2D #14-13		
3A #13-12	2D #13-13		
3A #12-12	2D #12-13		
3A #11-12	2D #11-13	1A #11-14	3B #11-15
3A #10-12	2D #10-13	1A #10-14	3B #10-15
3A #09-12	2D #09-13	1A #09-14	3B #09-15
3A #08-12	2D #08-13	1A #08-14	3B #08-15
3A #07-12	2D #07-13	1A #07-14	3B #07-15
3A #06-12	2D #06-13	1A #06-14	3B #06-15
3A #05-12	2D #05-13	1A #05-14	3B #05-15
3A #04-12	2D #04-13	1A #04-14	3B #04-15
		1A #03-14	3B #03-15
		1A #02-14	3B #02-15
		1A-p2 #01-14	3B-p2 #01-15

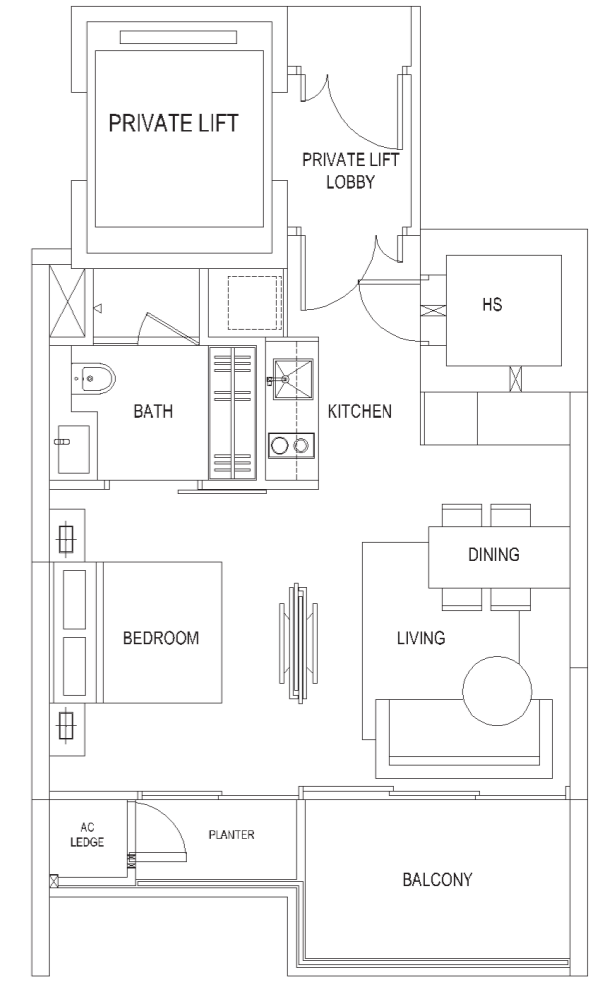
BASEMENT 1 CARPARK

BASEMENT 2 CARPARK

Type~1A  
Unit size 51m<sup>2</sup> (549 sq.ft)

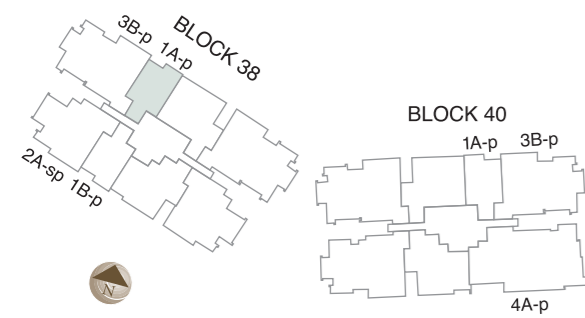


Type~1B  
Unit size 51m<sup>2</sup> (549 sq.ft)



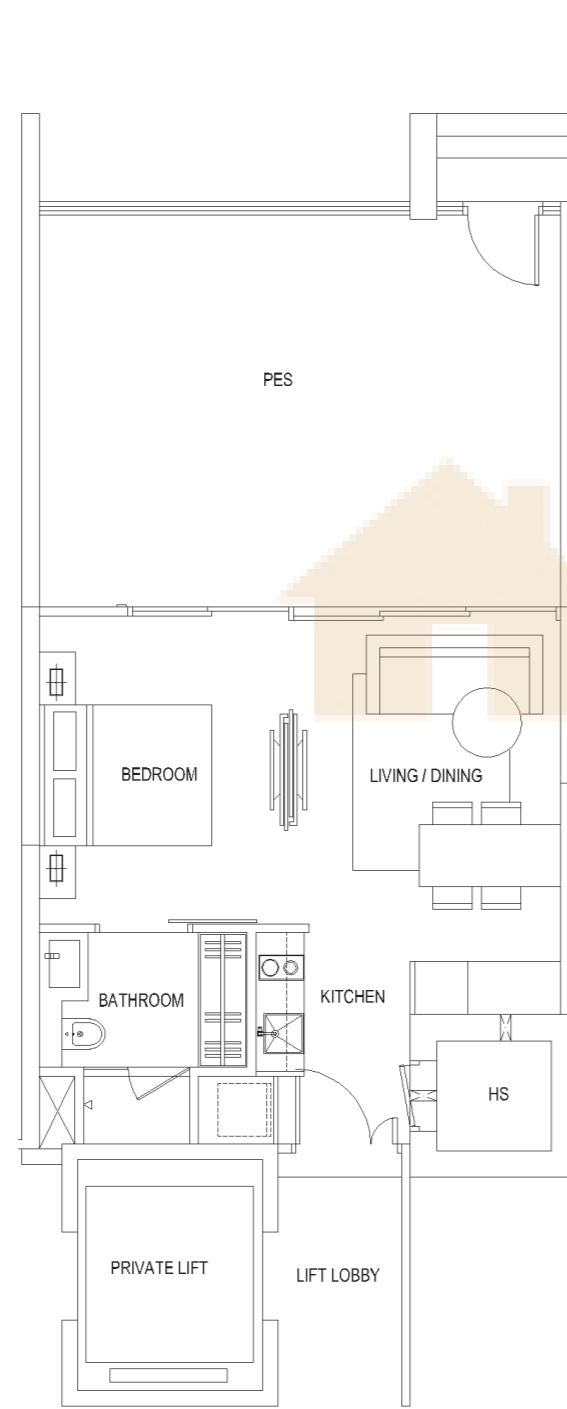
### NOTES

1. Areas include PES/roof terrace/planters/balconies/void (where applicable), AC ledges and bay windows.
2. All plans are subject to change as may be approved by the relevant authorities.
3. All floor areas are approximate measurement and subject to final survey. Plans are not to scale.



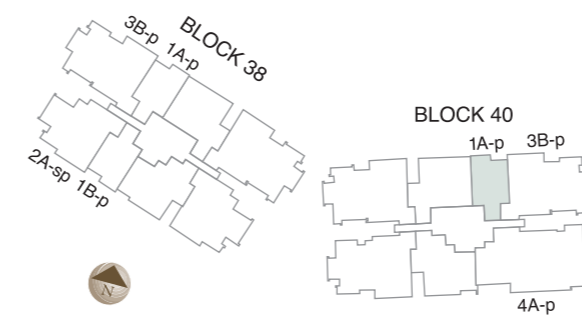
Unit #01-06

**Type~1A-p1**  
 Unit size 67m<sup>2</sup>  
 (721 sq.ft, incl PES 323 sq.ft)



**NOTES**

1. Areas include PES/roof terrace/planters/balconies/void (where applicable), AC ledges and bay windows.
2. All plans are subject to change as may be approved by the relevant authorities.
3. All floor areas are approximate measurement and subject to final survey. Plans are not to scale.



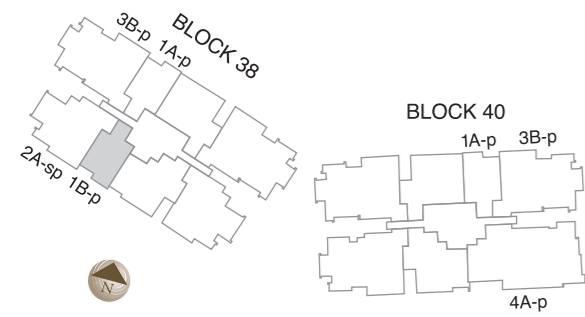
Unit #01-14

**Type~1A-p2**  
 Unit size 67m<sup>2</sup>  
 (721 sq.ft, incl PES 312 sq.ft)



**NOTES**

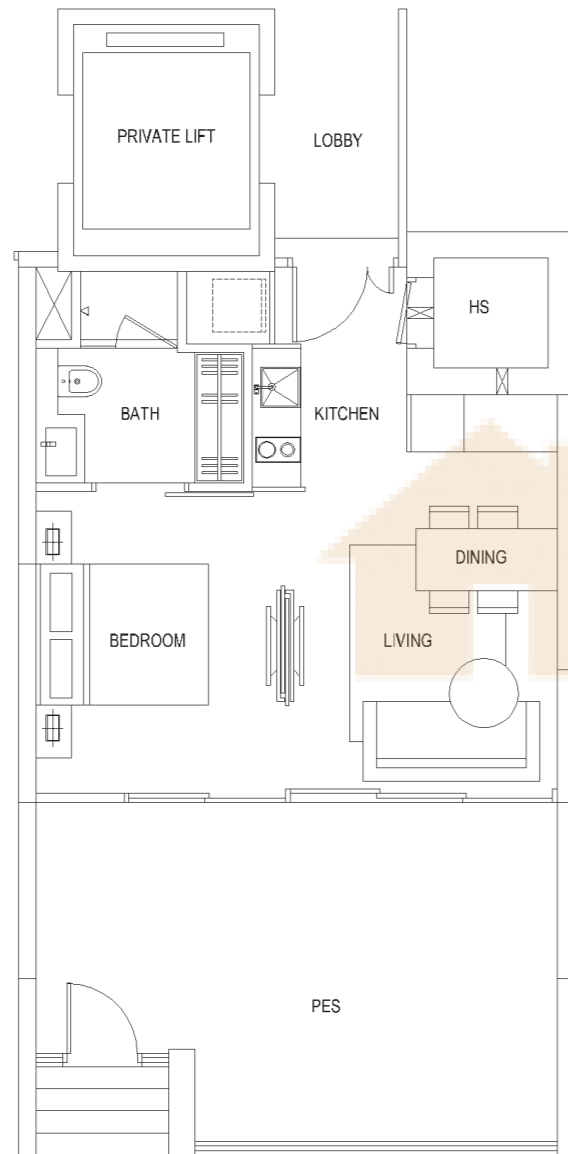
1. Areas include PES/roof terrace/planters/balconies/void (where applicable), AC ledges and bay windows.
2. All plans are subject to change as may be approved by the relevant authorities.
3. All floor areas are approximate measurement and subject to final survey. Plans are not to scale.



Unit #01-03

### Type~1B-p

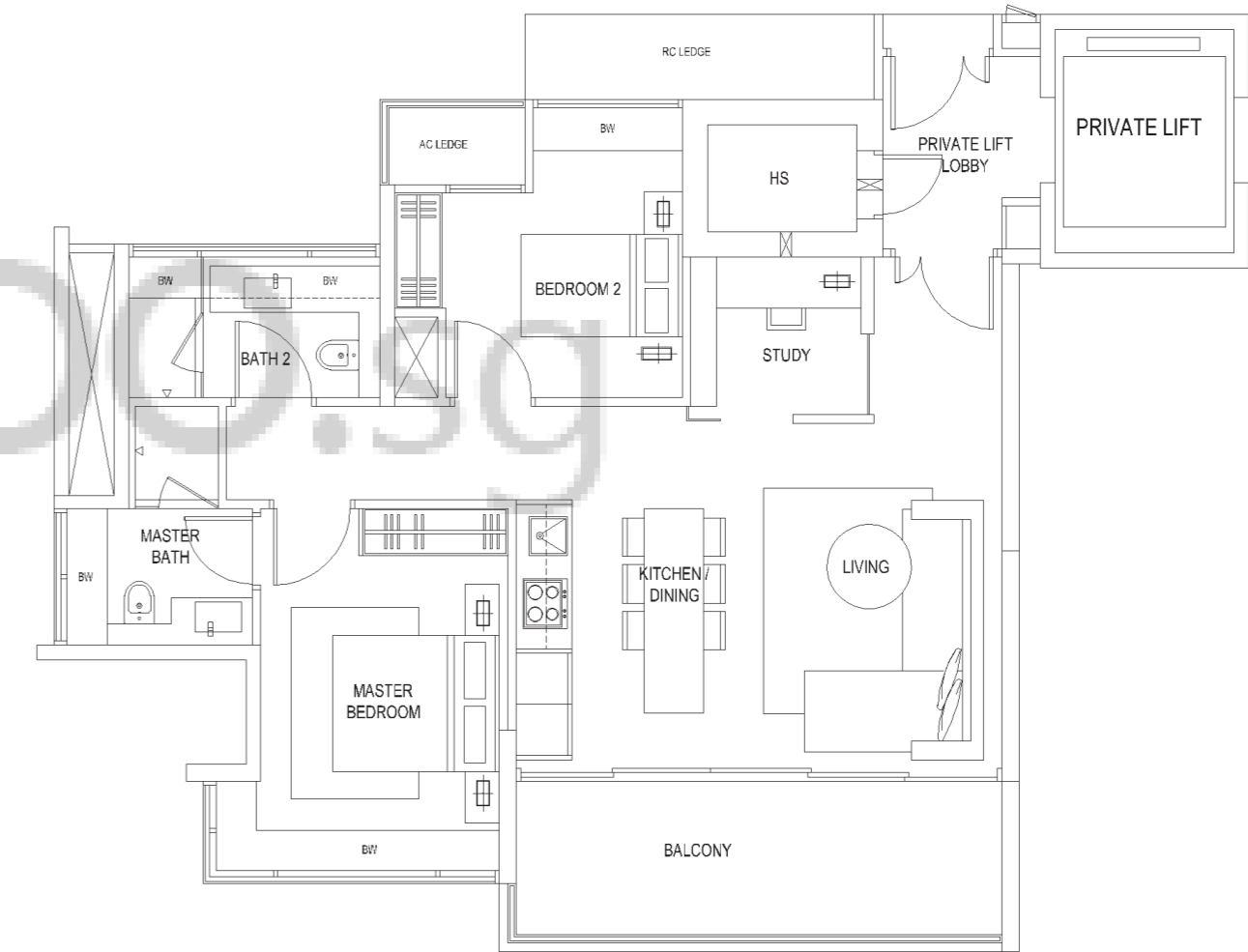
Unit size 62m<sup>2</sup>  
(667 sq.ft, incl PES 269 sq.ft)



Unit #02-04 to #11-04  
Unit #15-04 to #18-04

### Type~2A-s

Unit size 93m<sup>2</sup> (1,001 sq.ft)

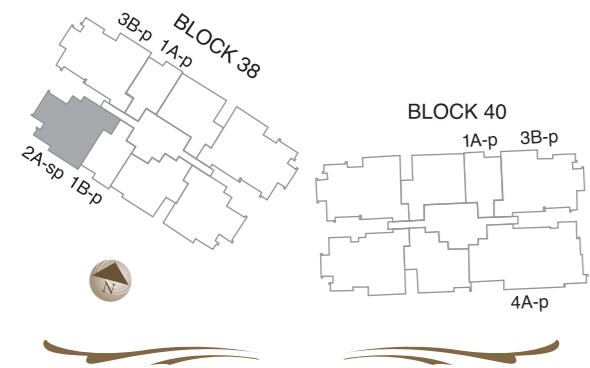


**NOTES**

1. Areas include PES/roof terrace/planters/balconies/void (where applicable), AC ledges and bay windows.
2. All plans are subject to change as may be approved by the relevant authorities.
3. All floor areas are approximate measurement and subject to final survey. Plans are not to scale.

**NOTES**

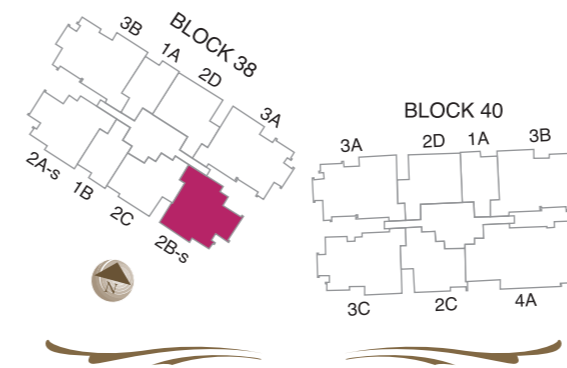
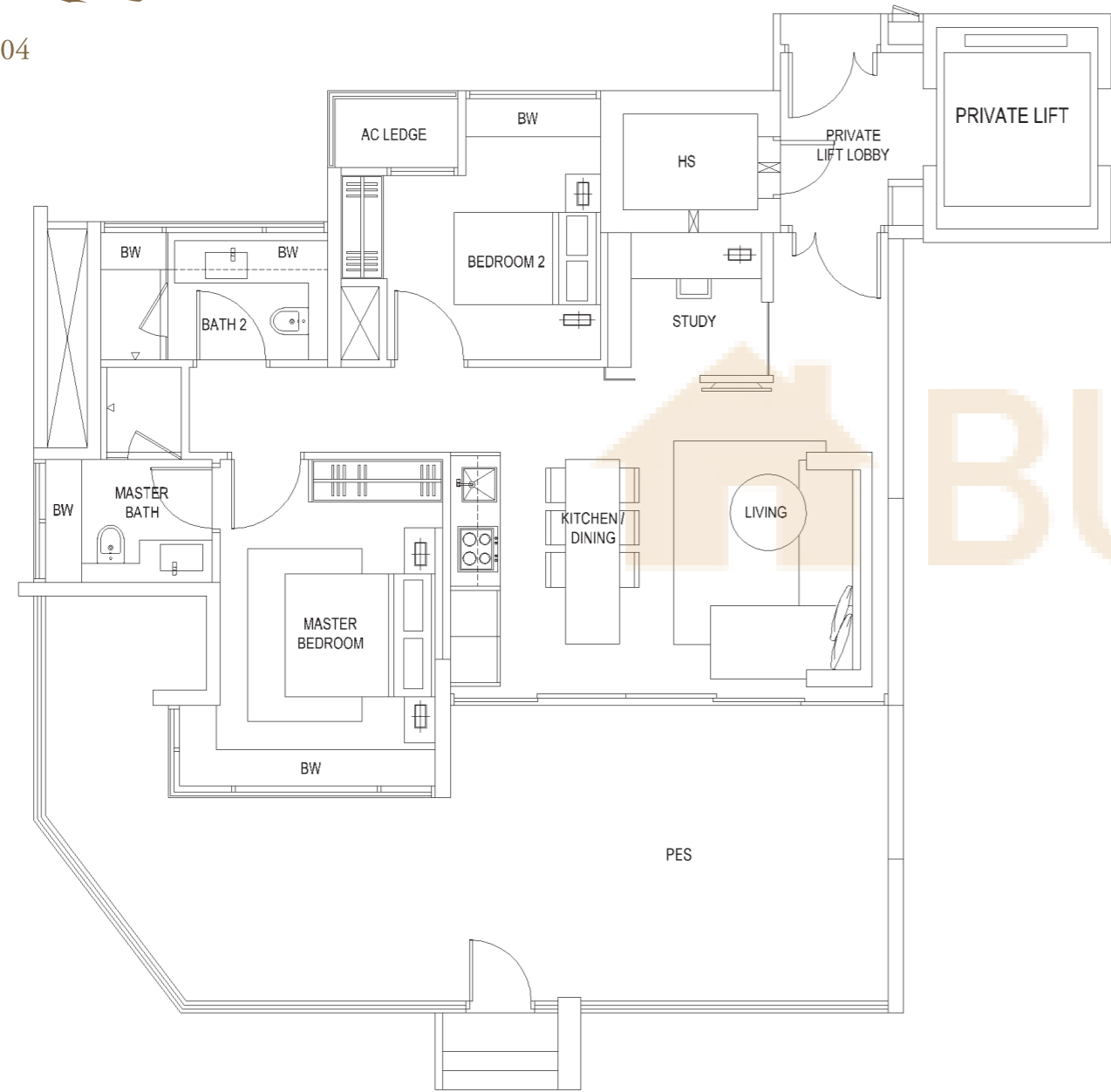
1. Areas include PES/roof terrace/planters/balconies/void (where applicable), AC ledges and bay windows.
2. All plans are subject to change as may be approved by the relevant authorities.
3. All floor areas are approximate measurement and subject to final survey. Plans are not to scale.



Unit #01-04

### Type~2A-sp

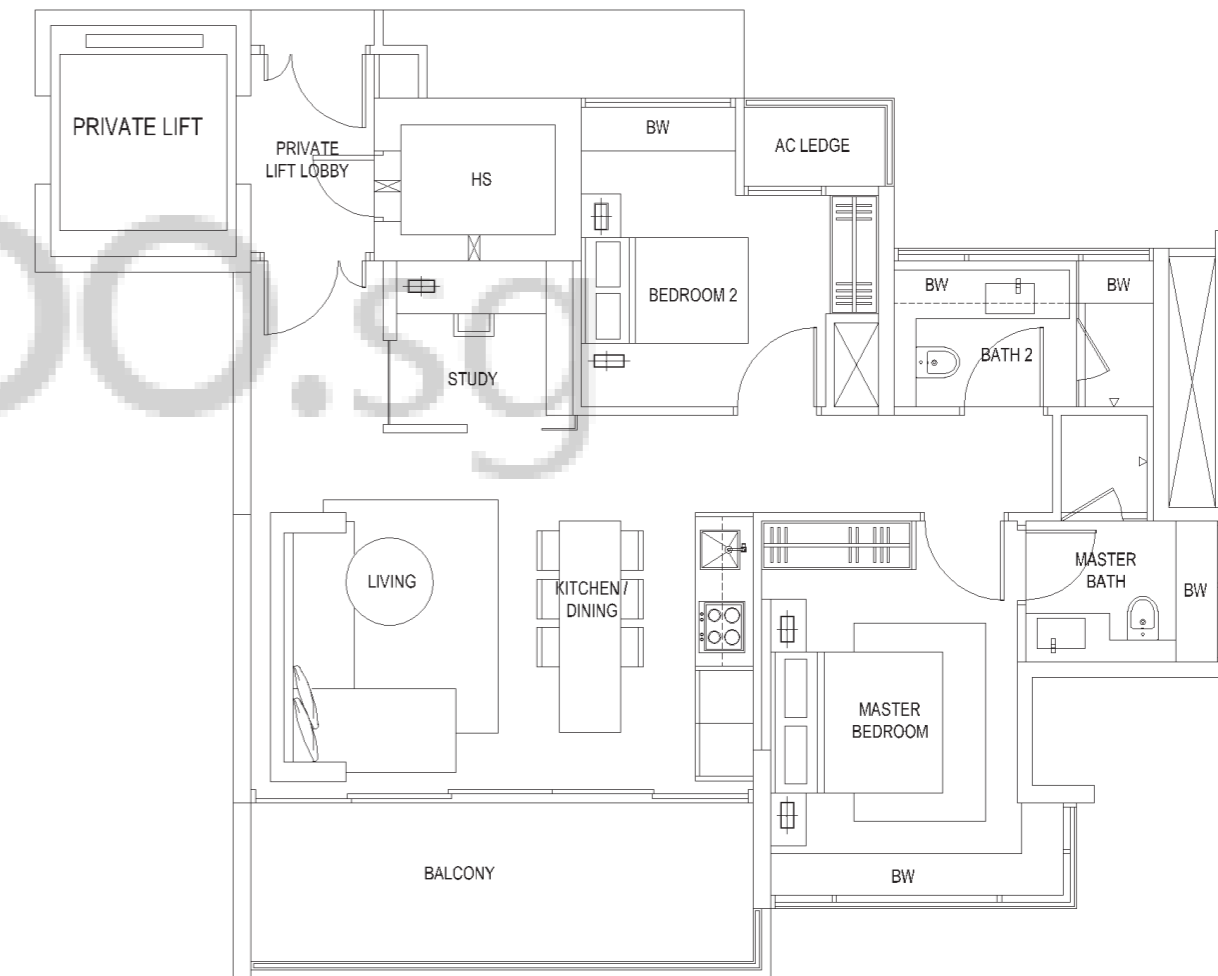
Unit size 125m<sup>2</sup>  
(1,345 sq.ft, incl PES 463 sq.ft)



Unit #04-01 to #18-01

### Type~2B-s

Unit size 93m<sup>2</sup> (1,001 sq.ft)

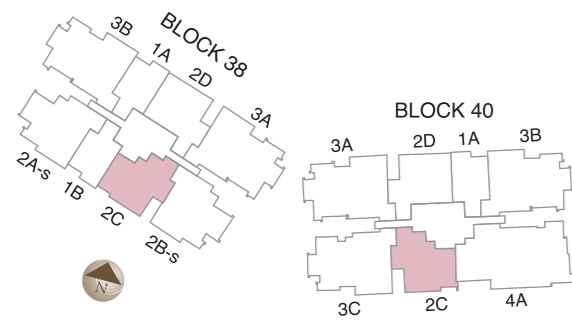


**NOTES**

1. Areas include PES/roof terrace/planters/balconies/void (where applicable), AC ledges and bay windows.
2. All plans are subject to change as may be approved by the relevant authorities.
3. All floor areas are approximate measurement and subject to final survey. Plans are not to scale.

**NOTES**

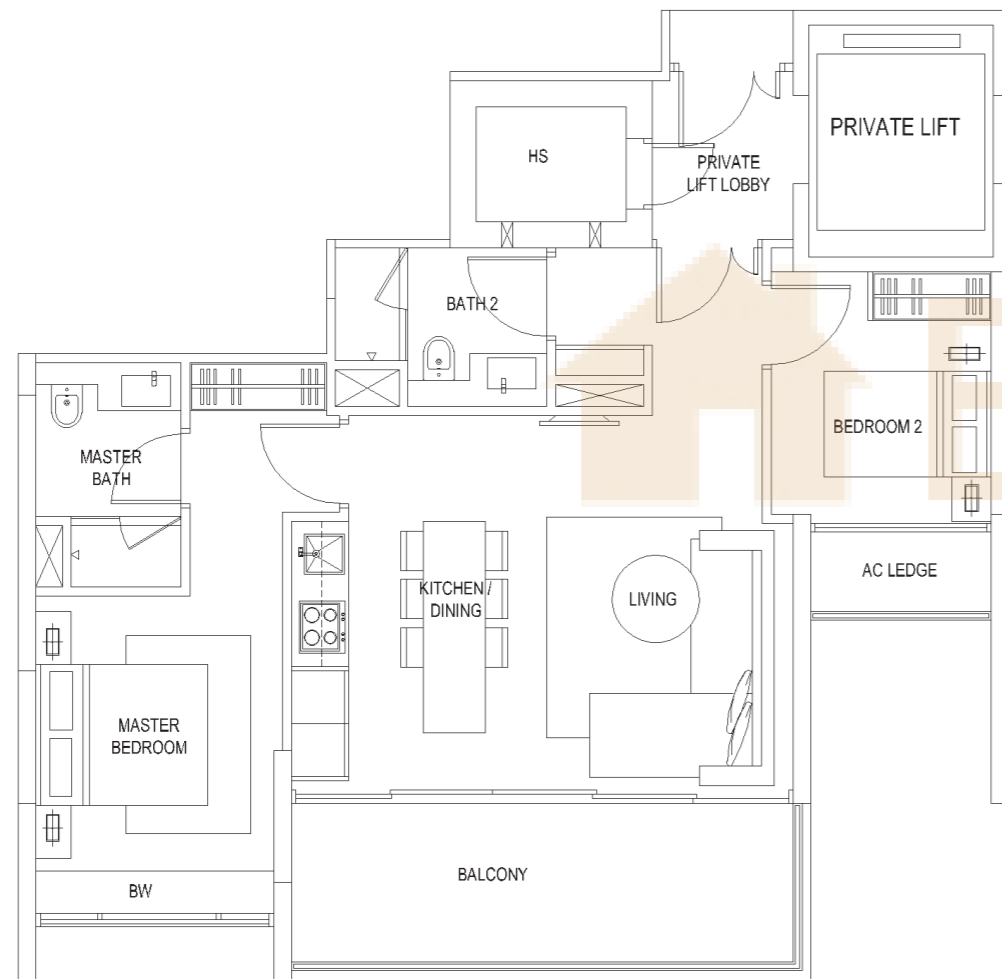
1. Areas include PES/roof terrace/planters/balconies/void (where applicable), AC ledges and bay windows.
2. All plans are subject to change as may be approved by the relevant authorities.
3. All floor areas are approximate measurement and subject to final survey. Plans are not to scale.



Unit #04-02 to #18-02  
 Unit #04-10 to #18-10 (mirror image)

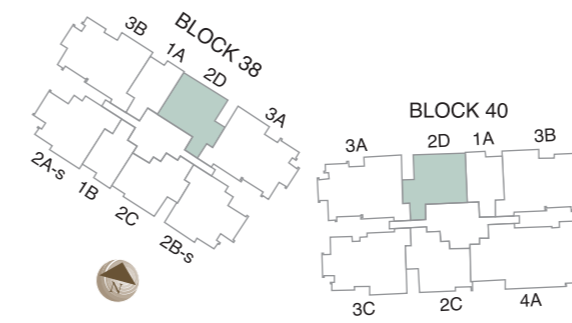
### Type~2C

Unit size 82m<sup>2</sup> (883 sq.ft)



**NOTES**

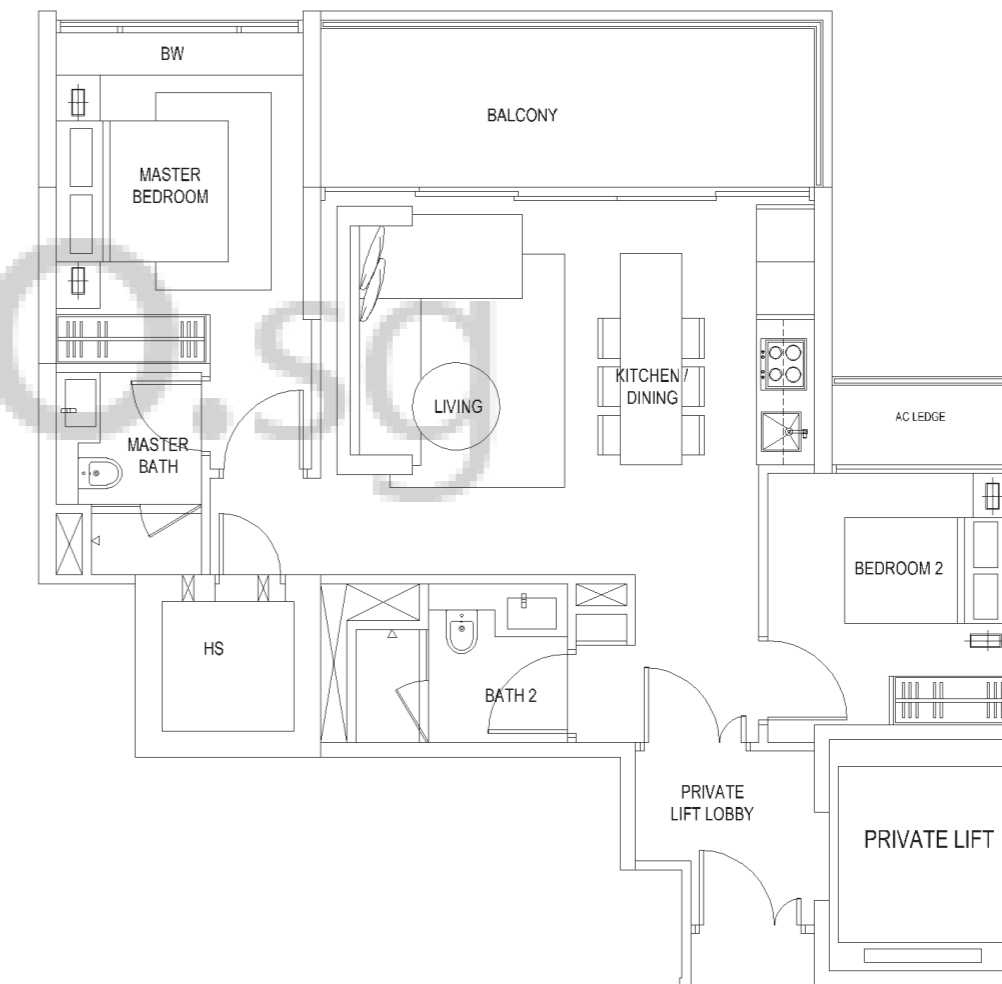
1. Areas include PES/roof terrace/planters/balconies/void (where applicable), AC ledges and bay windows.
2. All plans are subject to change as may be approved by the relevant authorities.
3. All floor areas are approximate measurement and subject to final survey. Plans are not to scale.



Unit #04-07 to #18-07  
 Unit #04-13 to #18-13 (mirror image)

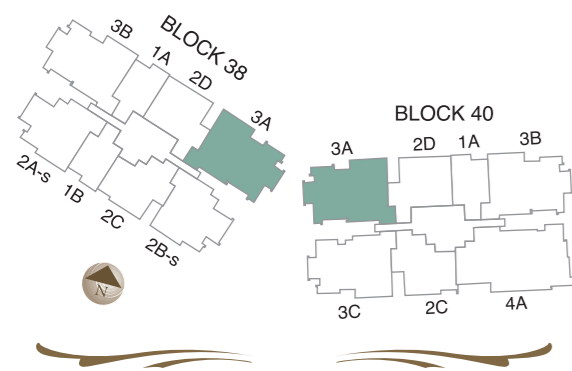
### Type~2D

Unit size 82m<sup>2</sup> (883 sq.ft)



**NOTES**

1. Areas include PES/roof terrace/planters/balconies/void (where applicable), AC ledges and bay windows.
2. All plans are subject to change as may be approved by the relevant authorities.
3. All floor areas are approximate measurement and subject to final survey. Plans are not to scale.

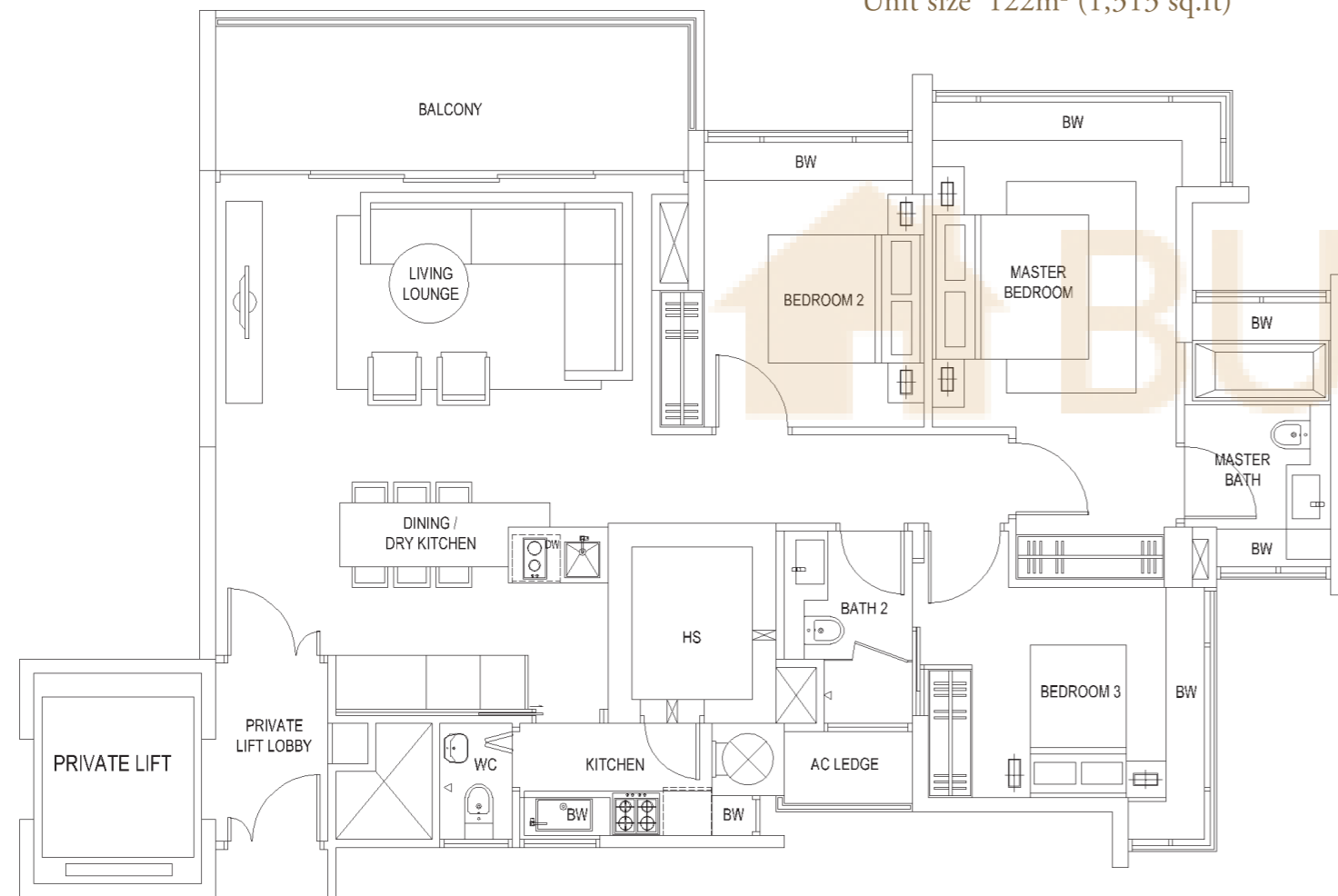


Unit #04-08 to #18-08

Unit #04-12 to #18-12 (mirror image)

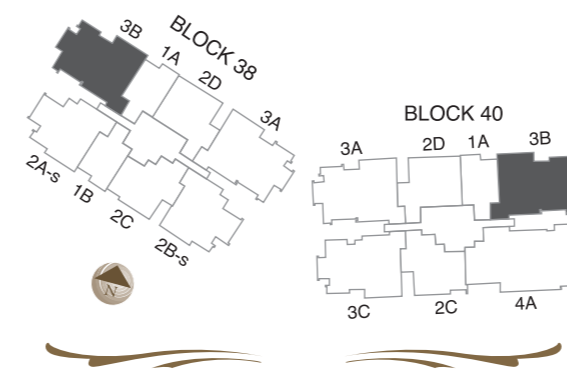
### Type~3A

Unit size 122m<sup>2</sup> (1,313 sq.ft)



**NOTES**

1. Areas include PES/roof terrace/planters/balconies/void (where applicable), AC ledges and bay windows.
2. All plans are subject to change as may be approved by the relevant authorities.
3. All floor areas are approximate measurement and subject to final survey. Plans are not to scale.



Unit #02-05 to #11-05

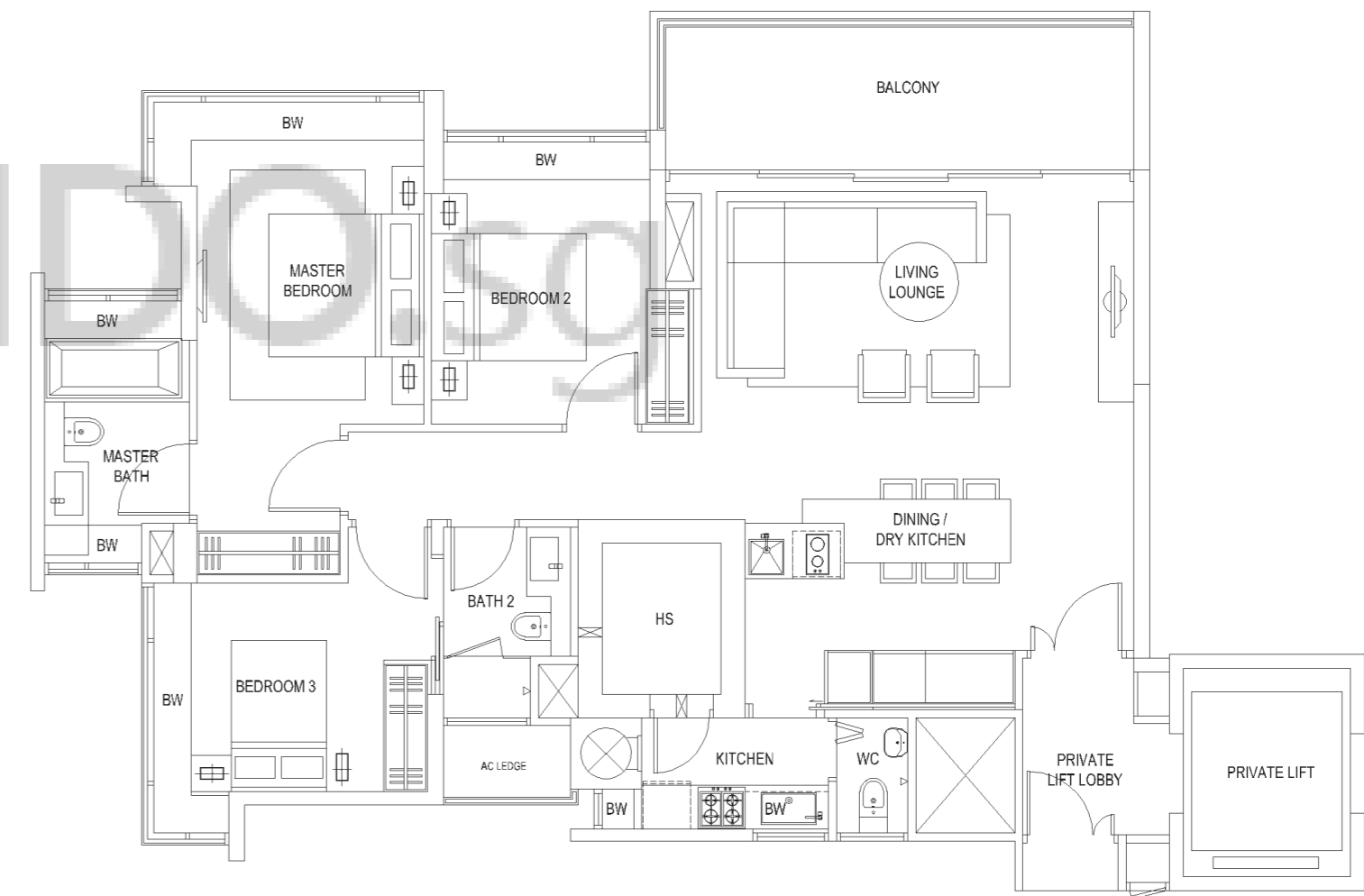
Unit #15-05 to #18-05

Unit #02-15 to #11-15 (mirror image)

Unit #15-15 to #18-15 (mirror image)

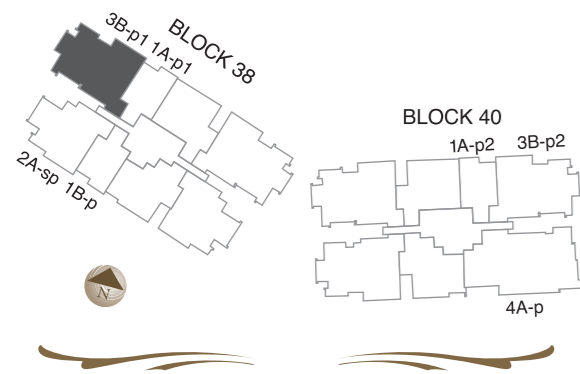
### Type~3B

Unit size 121m<sup>2</sup> (1,302 sq.ft)



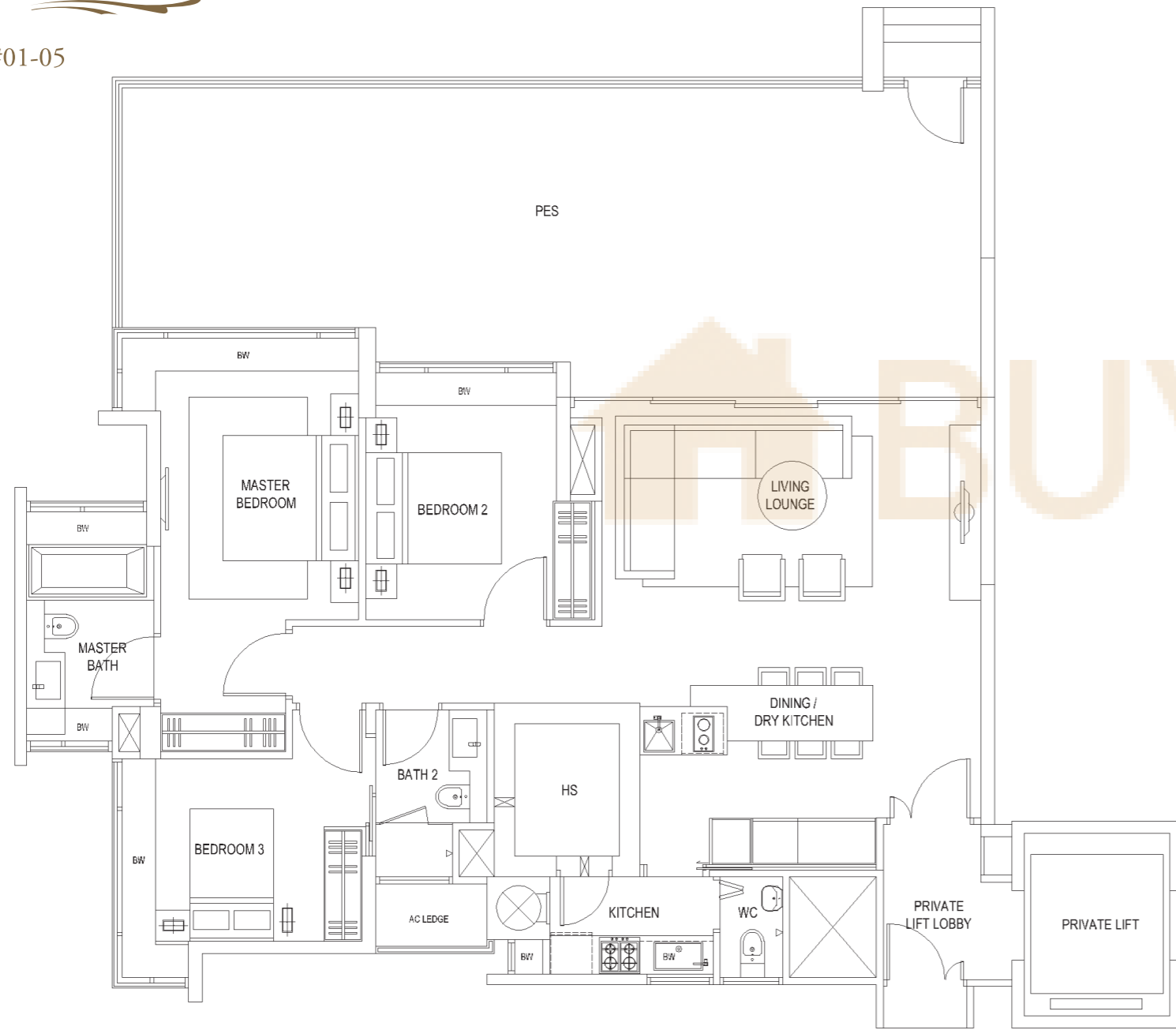
**NOTES**

1. Areas include PES/roof terrace/planters/balconies/void (where applicable), AC ledges and bay windows.
2. All plans are subject to change as may be approved by the relevant authorities.
3. All floor areas are approximate measurement and subject to final survey. Plans are not to scale.



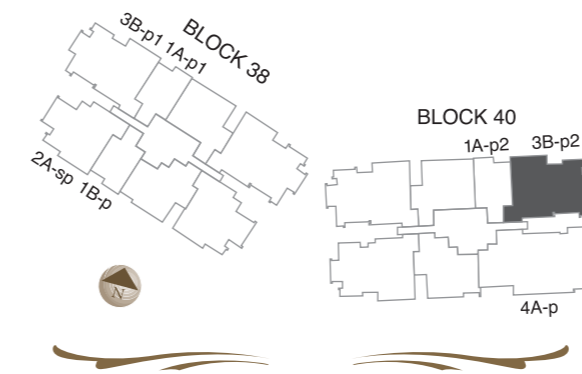
Unit #01-05

**Type~3B-p1**  
 Unit size 164m<sup>2</sup>  
 (1,765 sq.ft, incl PES 592 sq.ft)



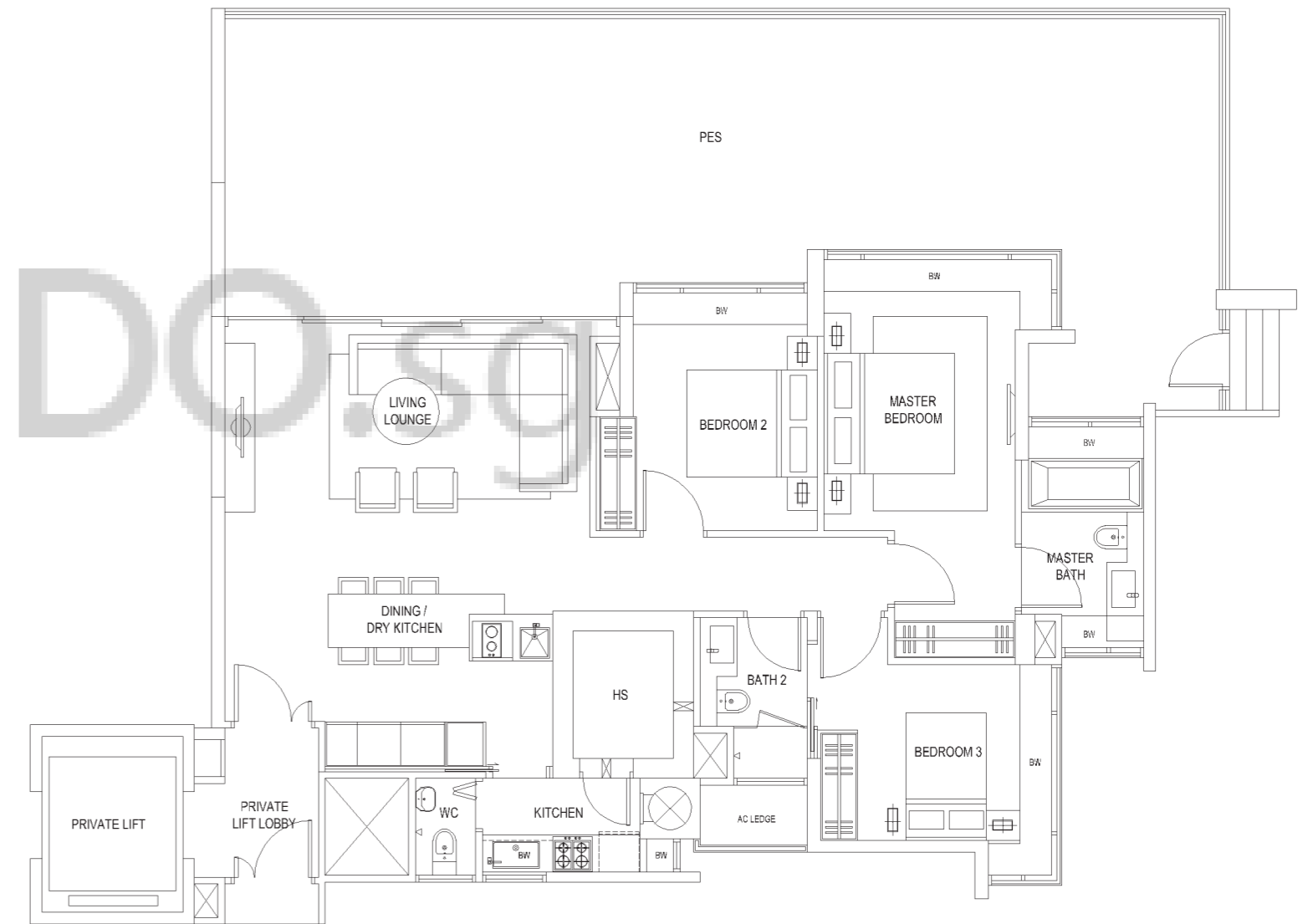
**NOTES**

1. Areas include PES/roof terrace/planters/balconies/void (where applicable), AC ledges and bay windows.
2. All plans are subject to change as may be approved by the relevant authorities.
3. All floor areas are approximate measurement and subject to final survey. Plans are not to scale.



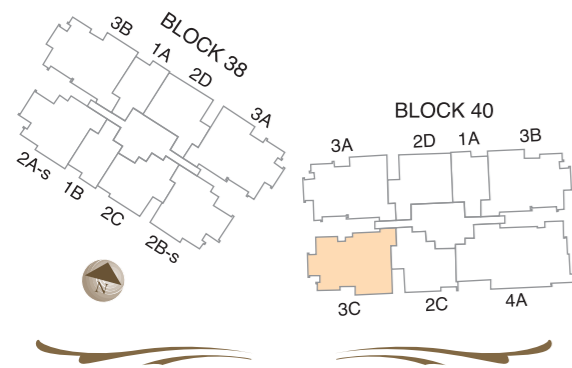
Unit #01-15

**Type~3B-p2**  
 Unit size 179m<sup>2</sup>  
 (1,927 sq.ft, incl PES 753 sq.ft)



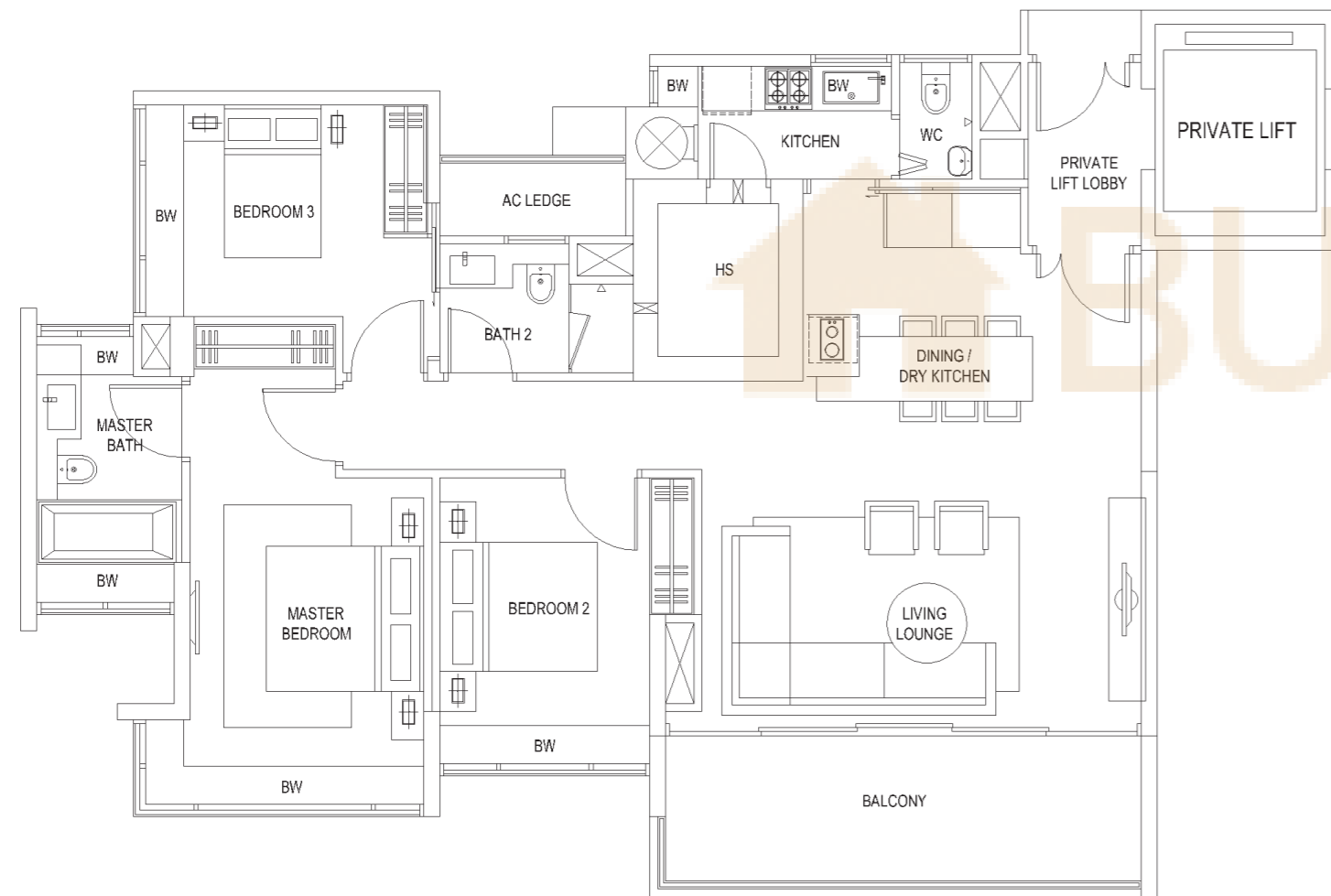
**NOTES**

1. Areas include PES/roof terrace/planters/balconies/void (where applicable), AC ledges and bay windows.
2. All plans are subject to change as may be approved by the relevant authorities.
3. All floor areas are approximate measurement and subject to final survey. Plans are not to scale.



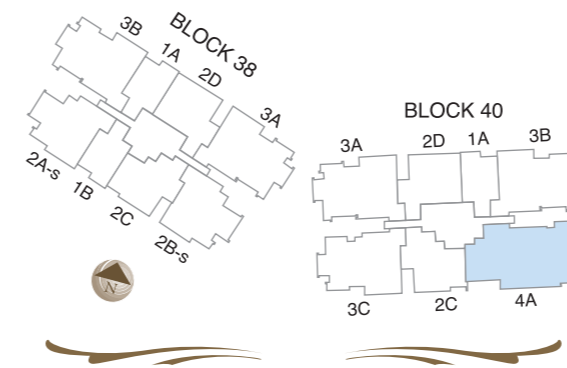
Unit #04-11 to #18-11

**Type~3C**  
Unit size 119m<sup>2</sup> (1,281 sq.ft)



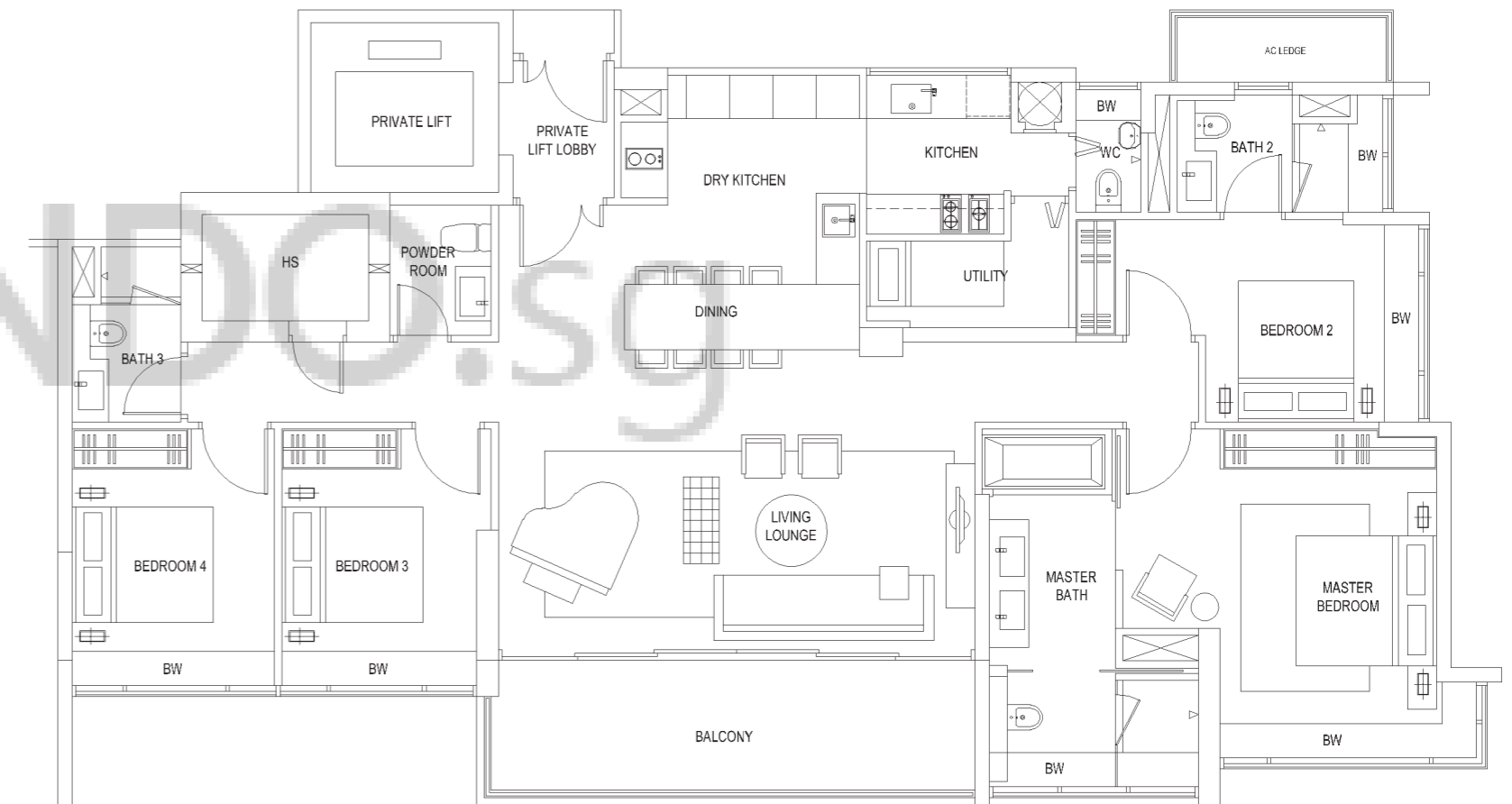
**NOTES**

1. Areas include PES/roof terrace/planters/balconies/void (where applicable), AC ledges and bay windows.
2. All plans are subject to change as may be approved by the relevant authorities.
3. All floor areas are approximate measurement and subject to final survey. Plans are not to scale.



Unit #02-09 to #11-09  
Unit #15-09 to #18-09

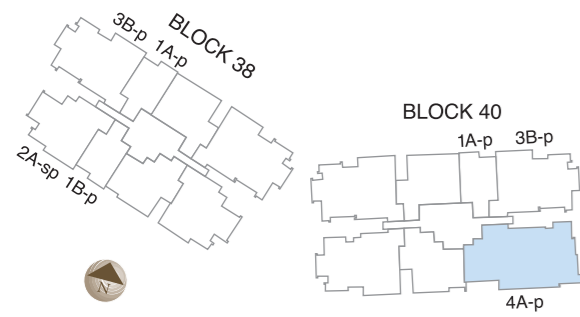
**Type~4A**  
Unit size 169m<sup>2</sup> (1,819 sq.ft)



**NOTES**

1. Areas include PES/roof terrace/planters/balconies/void (where applicable), AC ledges and bay windows.
2. All plans are subject to change as may be approved by the relevant authorities.
3. All floor areas are approximate measurement and subject to final survey. Plans are not to scale.

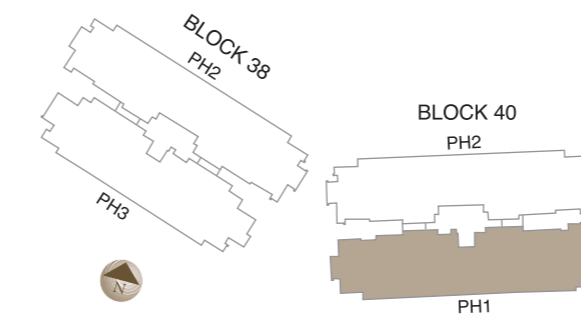
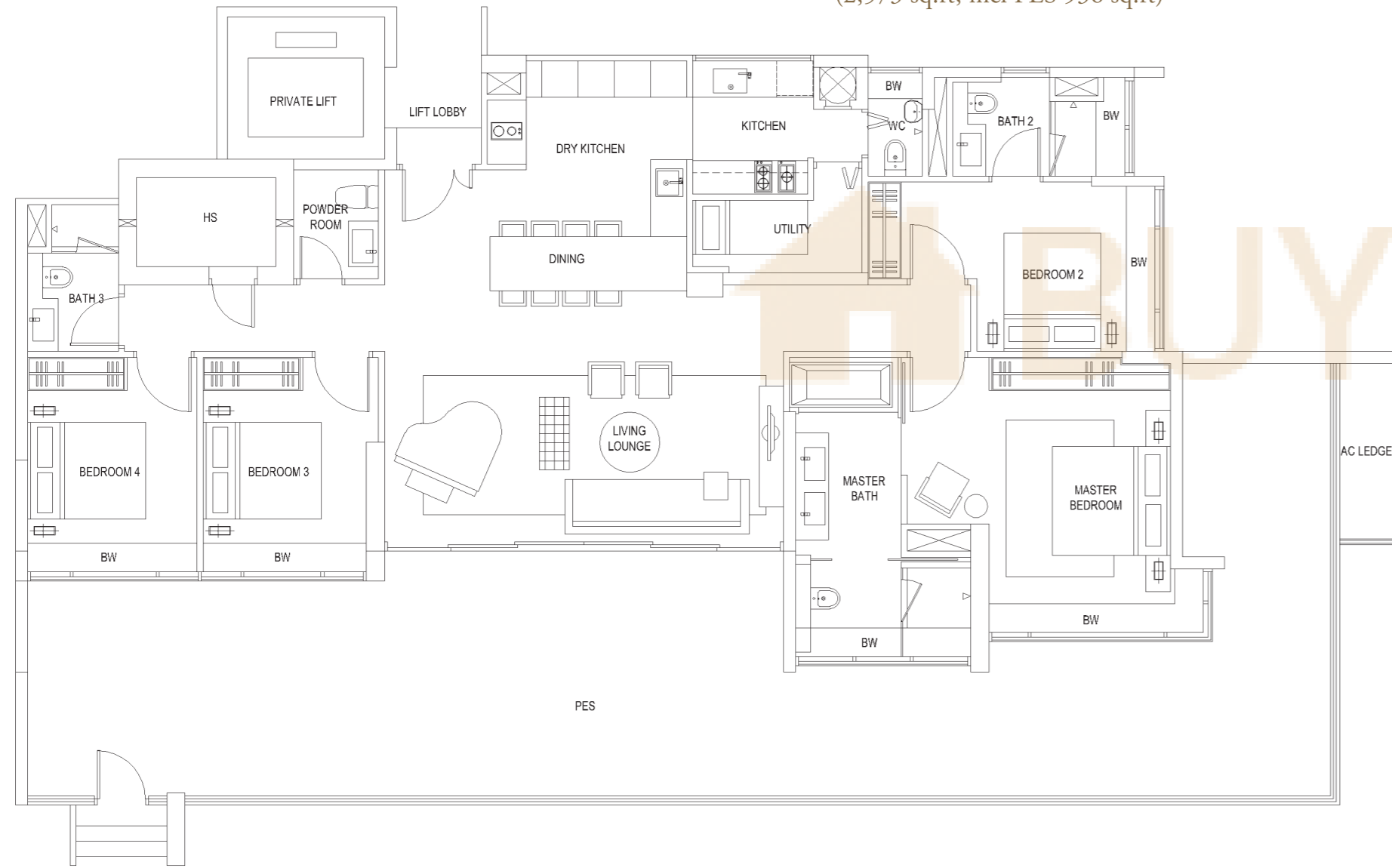




Unit #01-09

### Type~4A-p

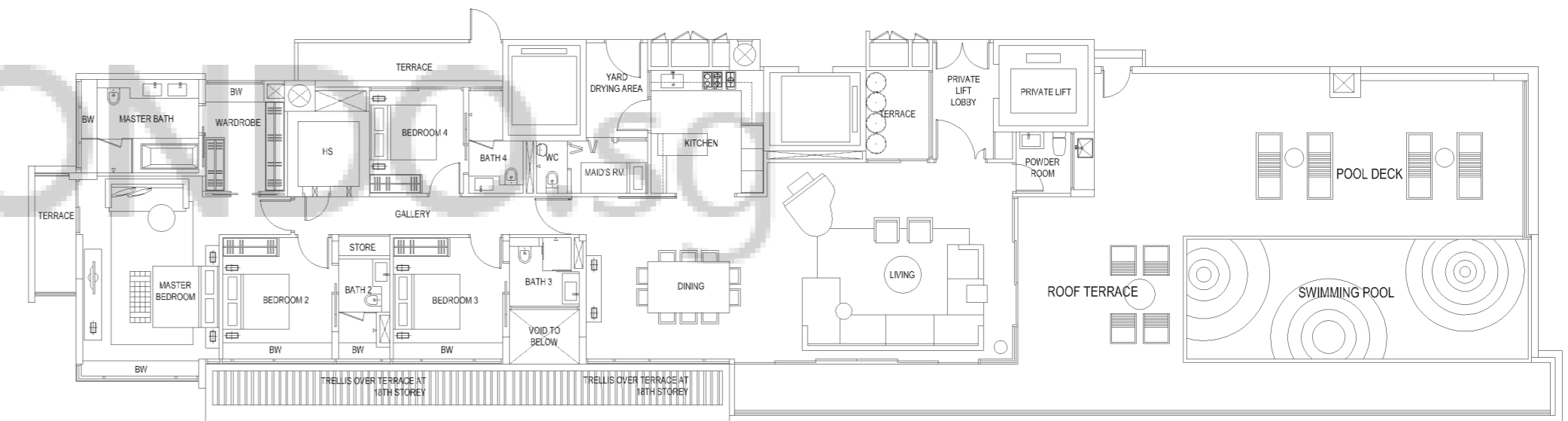
Unit size 239m<sup>2</sup>  
(2,573 sq.ft, incl PES 936 sq.ft)



Unit #19-09

### Type~PH1

Unit size 449m<sup>2</sup>  
(4,833 sq.ft, incl 205 sq.ft Terrace,  
1,679 sq.ft Roof Terrace and 667 sq.ft void)

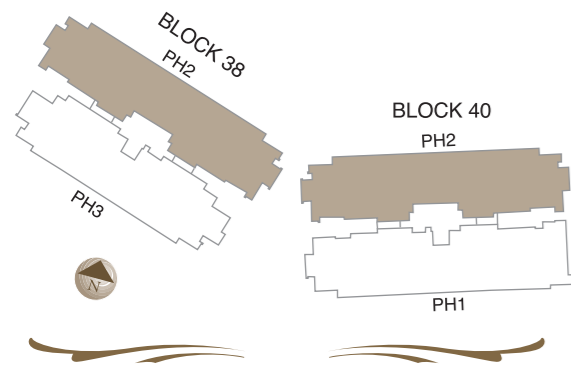


**NOTES**

1. Areas include PES/roof terrace/planters/balconies/void (where applicable), AC ledges and bay windows.
2. All plans are subject to change as may be approved by the relevant authorities.
3. All floor areas are approximate measurement and subject to final survey. Plans are not to scale.

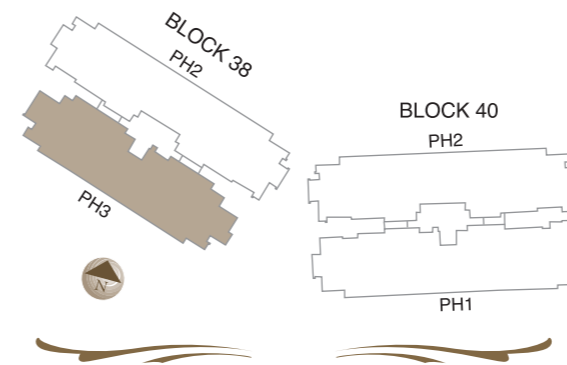
**NOTES**

1. Areas include PES/roof terrace/planters/balconies/void (where applicable), AC ledges and bay windows.
2. All plans are subject to change as may be approved by the relevant authorities.
3. All floor areas are approximate measurement and subject to final survey. Plans are not to scale.



Unit #19-08

Unit #19-12 (mirror image)

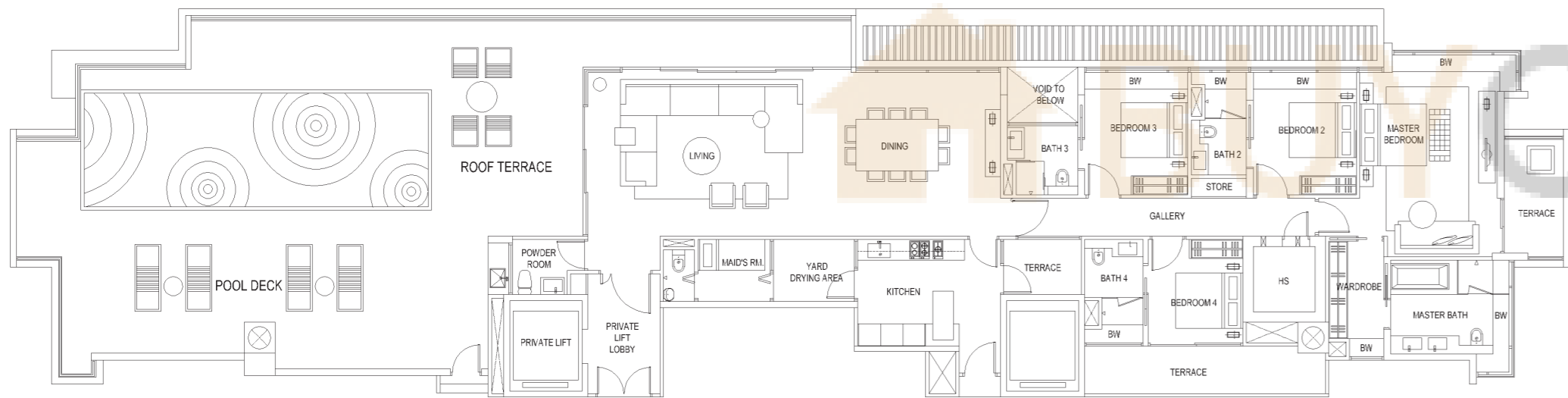


Unit #19-01

### Type~PH2

Unit size 443m<sup>2</sup>

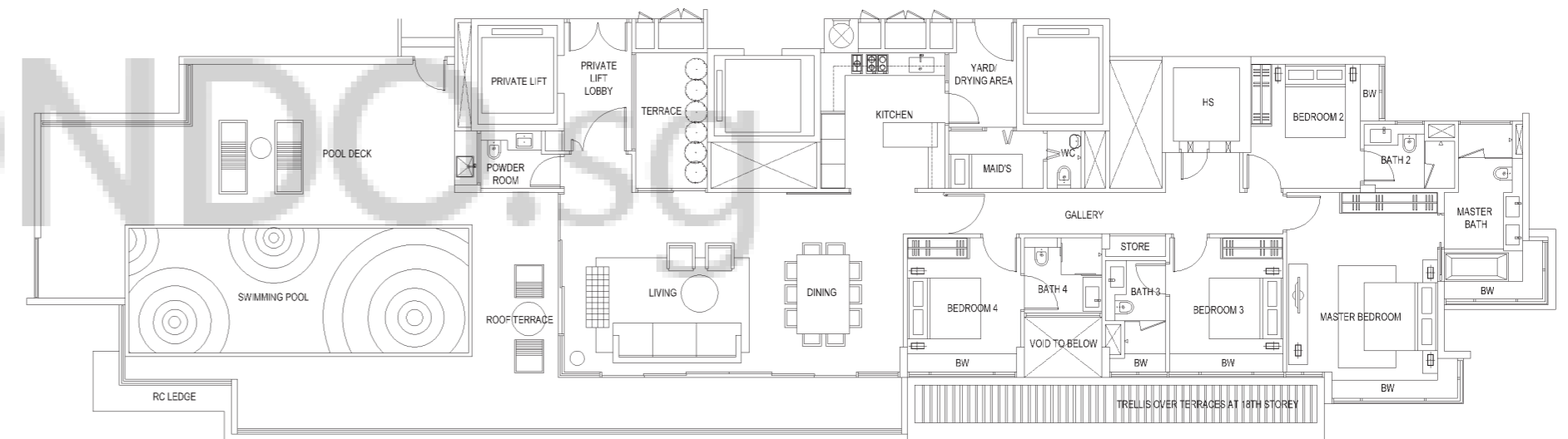
(4,768 sq.ft, incl 226 sq.ft Terrace,  
1,668 sq.ft Roof Terrace and 646 sq.ft void)



### Type~PH3

Unit size 358m<sup>2</sup>

(3,853 sq.ft, incl 75 sq.ft Terrace,  
1,335 sq.ft Roof Terrace and 484 sq.ft void)



#### NOTES

1. Areas include PES/roof terrace/planters/balconies/void (where applicable), AC ledges and bay windows.
2. All plans are subject to change as may be approved by the relevant authorities.
3. All floor areas are approximate measurement and subject to final survey. Plans are not to scale.

#### NOTES

1. Areas include PES/roof terrace/planters/balconies/void (where applicable), AC ledges and bay windows.
2. All plans are subject to change as may be approved by the relevant authorities.
3. All floor areas are approximate measurement and subject to final survey. Plans are not to scale.