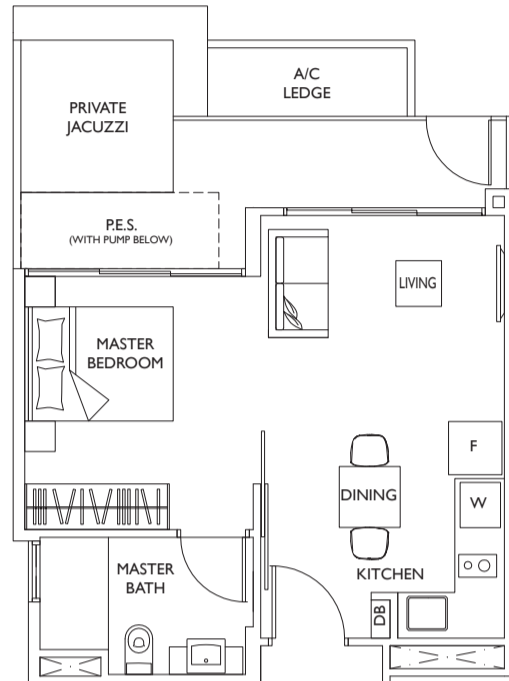


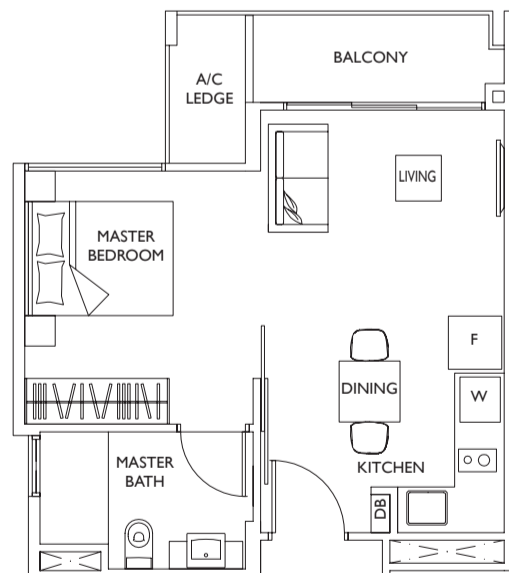
1 BEDROOM



TYPE A1P

59sq.m. / 635sq.ft.

#01-01, #01-04



TYPE A1

42sq.m. / 452sq.ft.

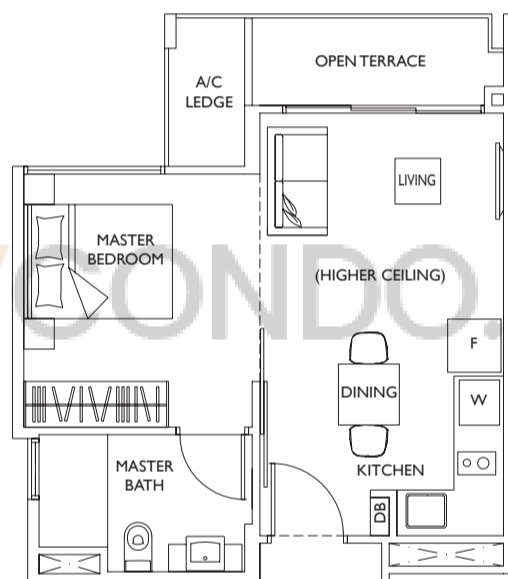
#02-01 to #14-01,

#02-04 to #14-04

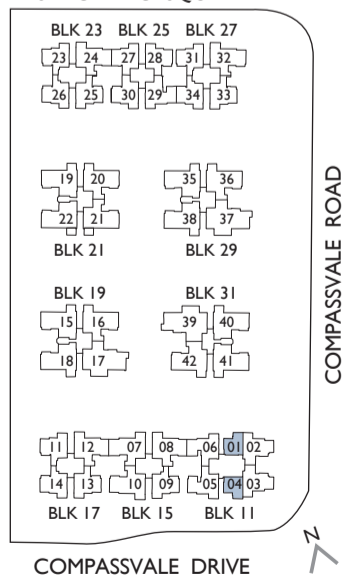
TYPE A1L

61sq.m. / 657sq.ft.

#15-01, #15-04

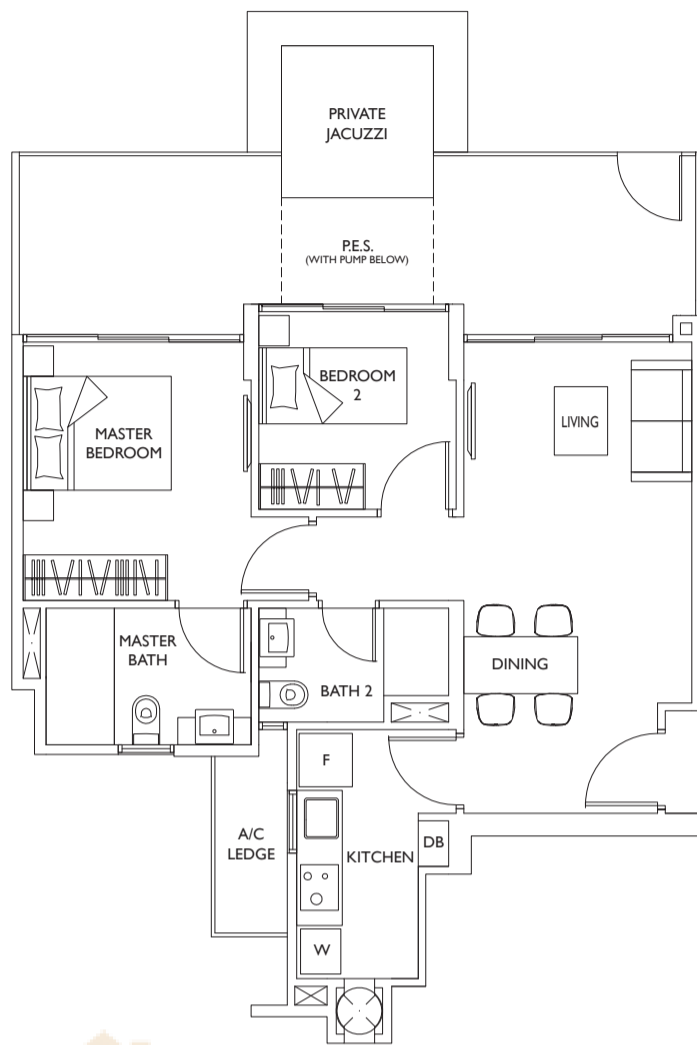


SENGKANG SQUARE



Area includes PES, A/C ledge, balcony, open/roof terrace, private lap pool, private jacuzzi, pump room and strata void, if any. Some units are mirror images of the apartment plans shown in the brochure. Please refer to the key plans for orientation. All plans are not drawn to scale and are subject to changes as may be approved by the relevant authorities. All floor areas are approximate measurements only and are subject to government resurvey.

2 BEDROOM

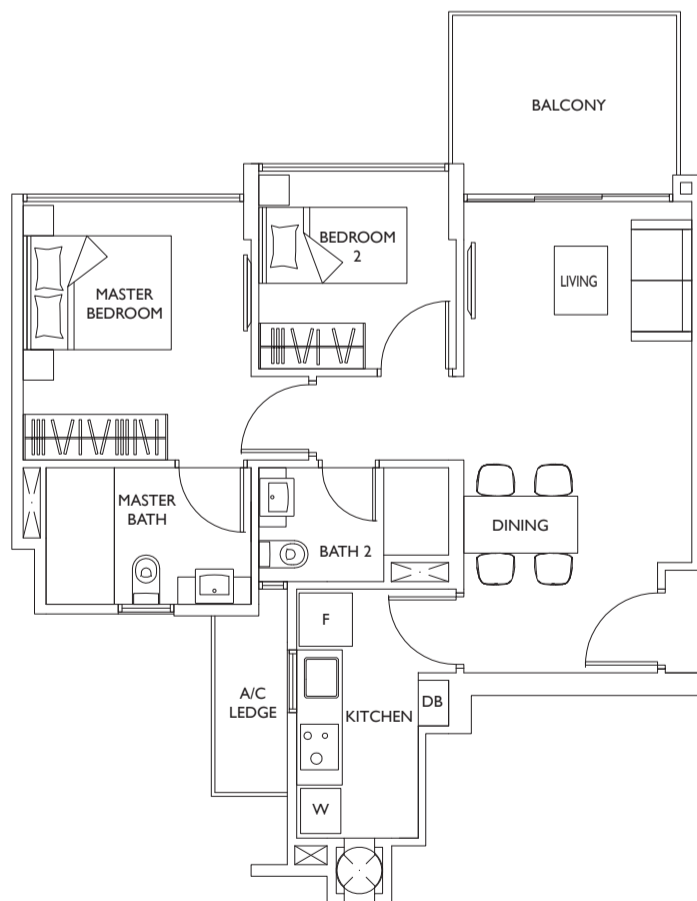


TYPE B1P

93sq.m. / 1,001sq.ft.

#01-09, #01-11,
#01-13, #01-14,
#01-23, #01-25,
#01-26, #01-27,
#01-28, #01-30,
#01-31, #01-33,
#01-34

BUYCONDO.sg



TYPE B1

68sq.m. / 732sq.ft.

#02-09 to #06-09,
#02-11 to #06-11,
#02-13 to #06-13,
#02-14 to #06-14,
#02-23 to #06-23,
#02-25 to #06-25,
#02-26 to #06-26,
#02-27 to #06-27,
#02-28 to #06-28,
#02-30 to #06-30,
#02-31 to #06-31,
#02-33 to #06-33,
#02-34 to #06-34

TYPE B1A

72sq.m. / 775sq.ft.

#07-09 to #14-09,
 #07-11 to #14-11,
 #07-13 to #14-13,
 #07-14 to #14-14,
 #07-23 to #14-23,
 #07-25 to #14-25,
 #07-26 to #14-26,
 #07-27 to #14-27,
 #07-28 to #14-28,
 #07-30 to #14-30,
 #07-31 to #14-31,
 #07-33 to #14-33,
 #07-34 to #14-34



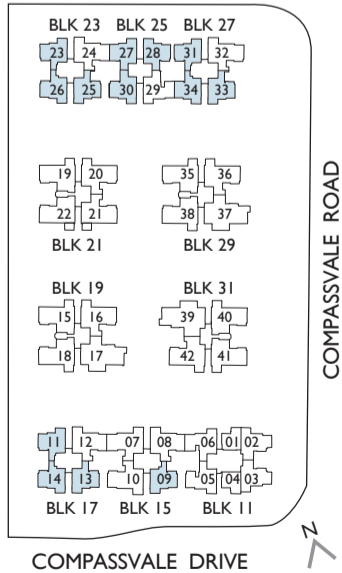
TYPE B1L

87sq.m. / 936sq.ft.

#15-09, #15-11,
 #15-13, #15-14,
 #15-23, #15-25,
 #15-26, #15-27,
 #15-28, #15-30,
 #15-31, #15-33,
 #15-34

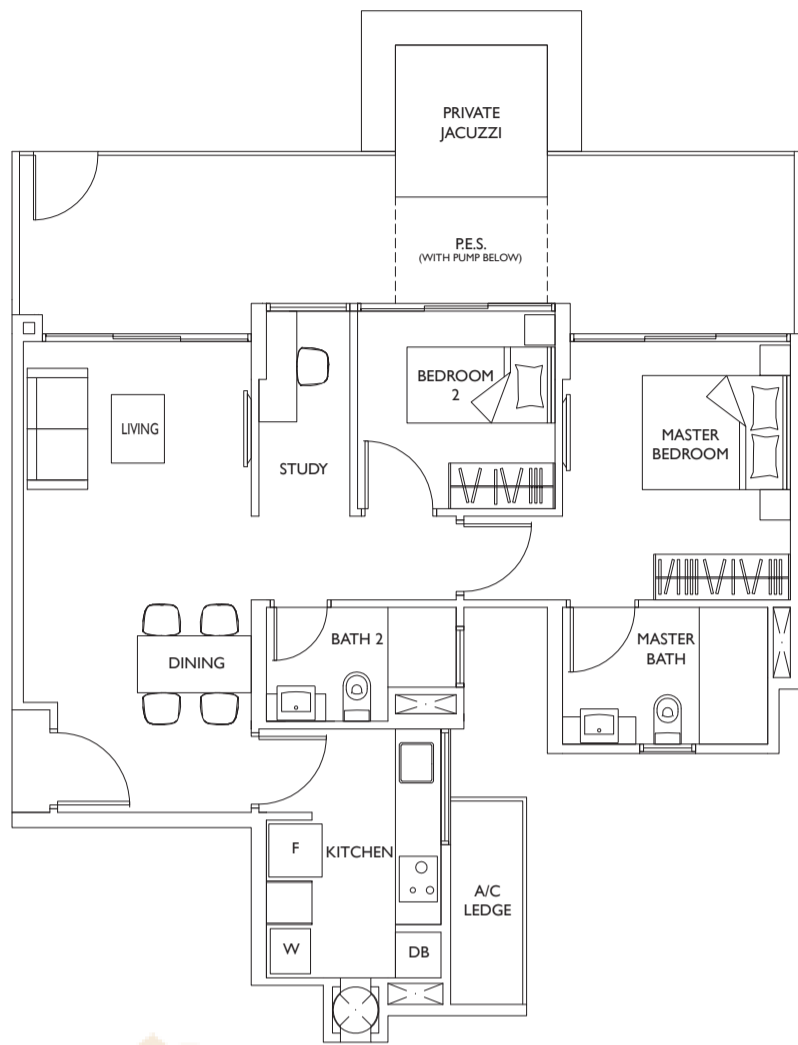


SENGKANG SQUARE



Area includes PES, A/C ledge, balcony, open/roof terrace, private lap pool, private jacuzzi, pump room and strata void, if any. Some units are mirror images of the apartment plans shown in the brochure. Please refer to the key plans for orientation. All plans are not drawn to scale and are subject to changes as may be approved by the relevant authorities. All floor areas are approximate measurements only and are subject to government resurvey.

2 BEDROOM + STUDY



TYPE BSIP

103sq.m. / 1,109sq.ft.

#01-05, #01-06, #01-29

BUYCONDO.sg



TYPE BSI

74sq.m. / 797sq.ft.

#02-05 to #06-05,

#02-06 to #06-06,

#02-29 to #06-29

Area includes PES, A/C ledge, balcony, open/roof terrace, private lap pool, private jacuzzi, pump room and strata void, if any. Some units are mirror images of the apartment plans shown in the brochure. Please refer to the key plans for orientation. All plans are not drawn to scale and are subject to changes as may be approved by the relevant authorities. All floor areas are approximate measurements only and are subject to government resurvey.

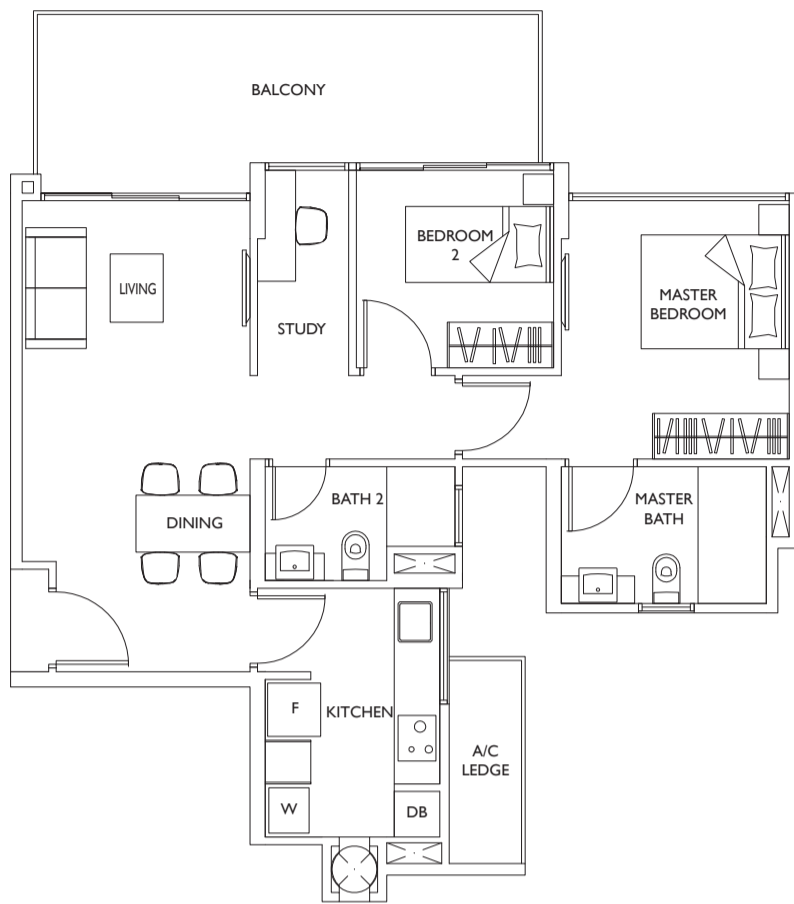
TYPE BSIA

82sq.m. / 883sq.ft.

#07-05 to #14-05,

#07-06 to #14-06,

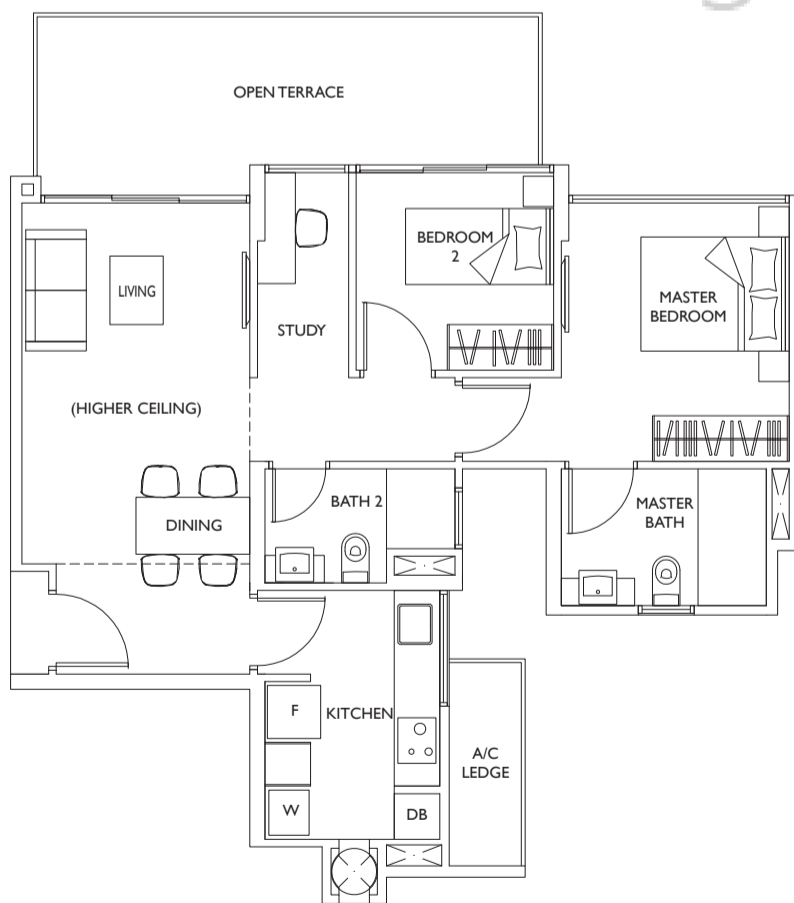
#07-29 to #14-29



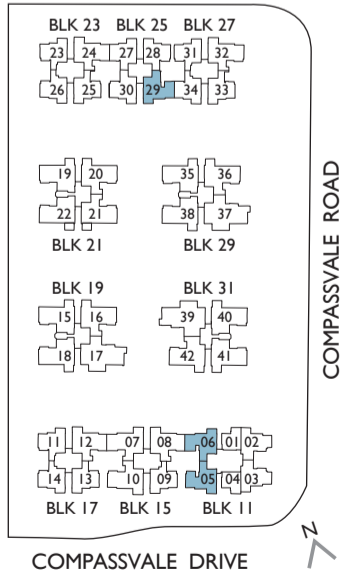
TYPE BSIL

97sq.m. / 1,044sq.ft.

#15-05, #15-06, #15-29

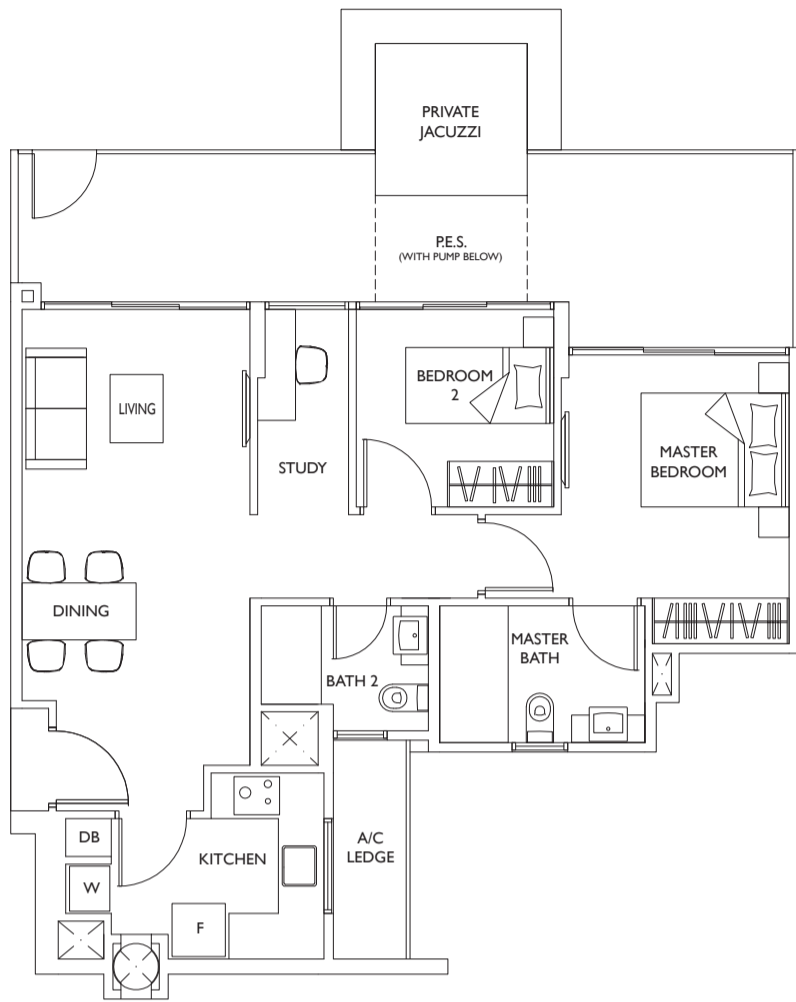


SENGKANG SQUARE



Area includes PES, A/C ledge, balcony, open/roof terrace, private lap pool, private jacuzzi, pump room and strata void, if any. Some units are mirror images of the apartment plans shown in the brochure. Please refer to the key plans for orientation. All plans are not drawn to scale and are subject to changes as may be approved by the relevant authorities. All floor areas are approximate measurements only and are subject to government resurvey.

2 BEDROOM + STUDY

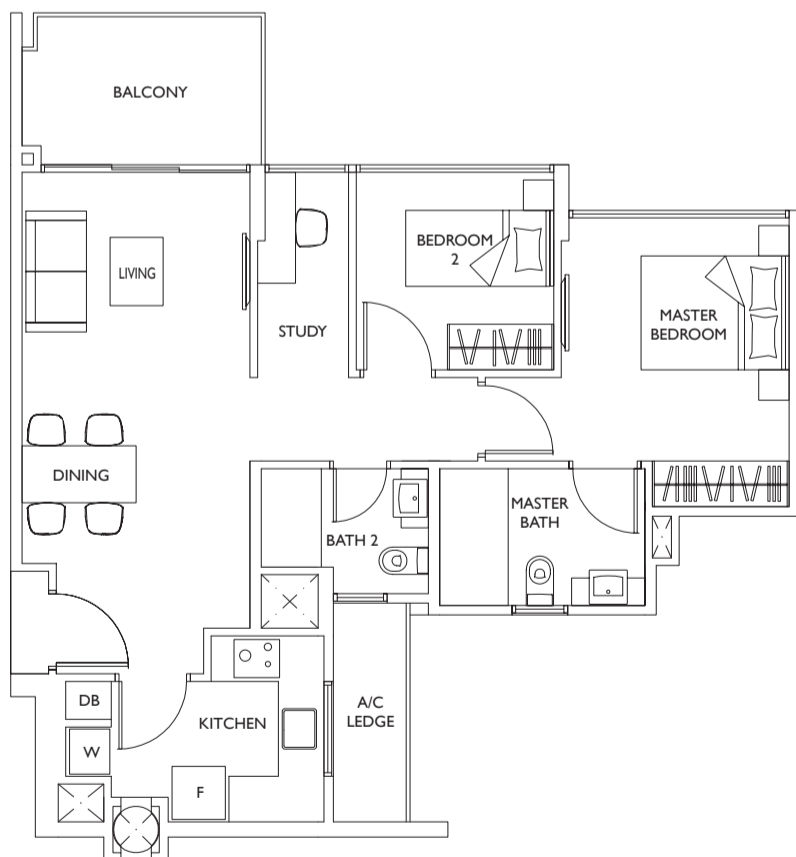


TYPE BS2P

103sq.m. / 1,109sq.ft.

#01-02, #01-03

BUYCONDO.sg



TYPE BS2

74sq.m. / 797sq.ft.

#02-02 to #06-02,

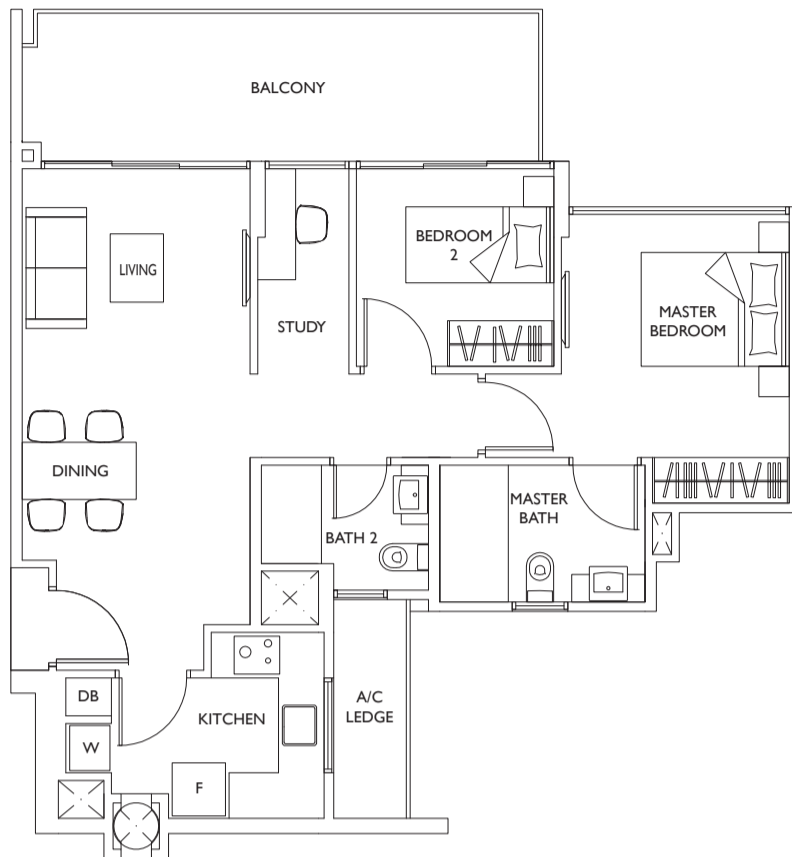
#02-03 to #06-03

TYPE BS2A

82sq.m. / 883sq.ft.

#07-02 to #14-02,

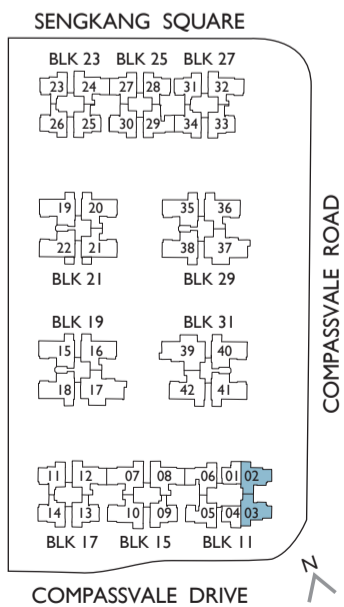
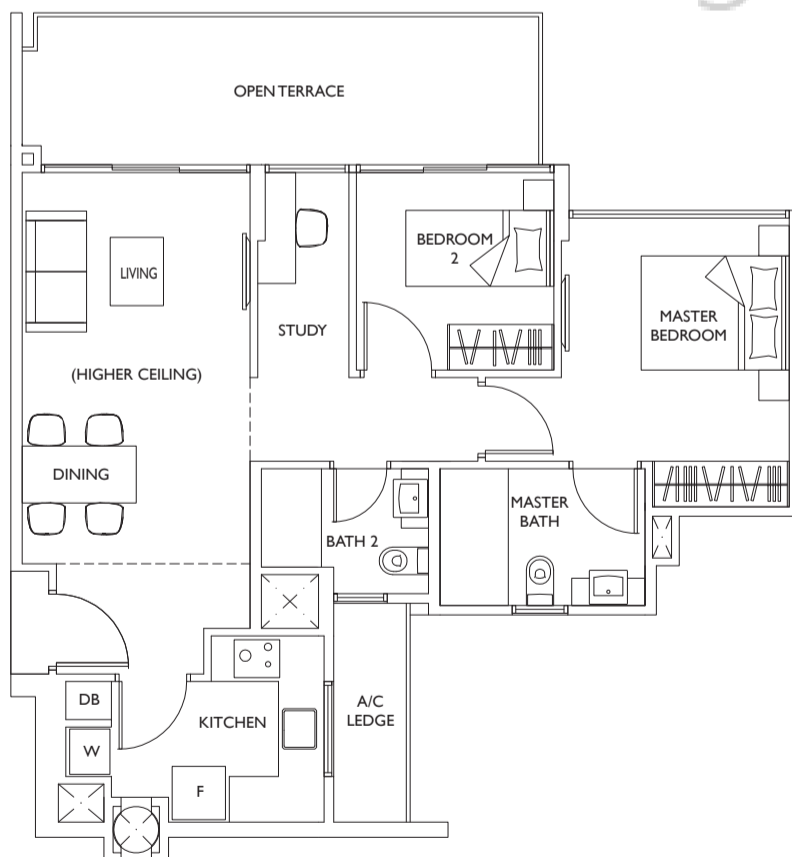
#07-03 to #14-03



TYPE BS2L

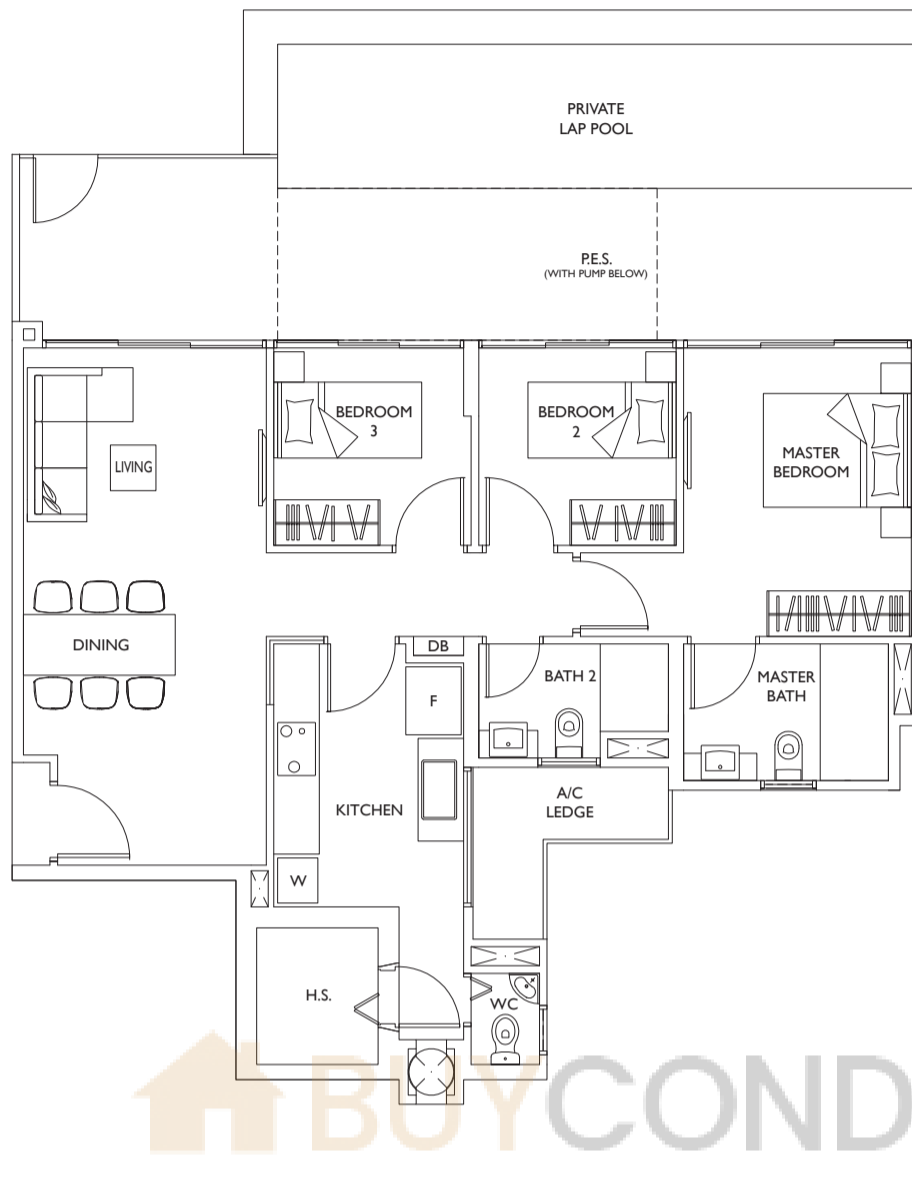
98sq.m. / 1,055sq.ft.

#15-02, #15-03



Area includes PES, A/C ledge, balcony, open/roof terrace, private lap pool, private jacuzzi, pump room and strata void, if any. Some units are mirror images of the apartment plans shown in the brochure. Please refer to the key plans for orientation. All plans are not drawn to scale and are subject to changes as may be approved by the relevant authorities. All floor areas are approximate measurements only and are subject to government resurvey.

3 BEDROOM



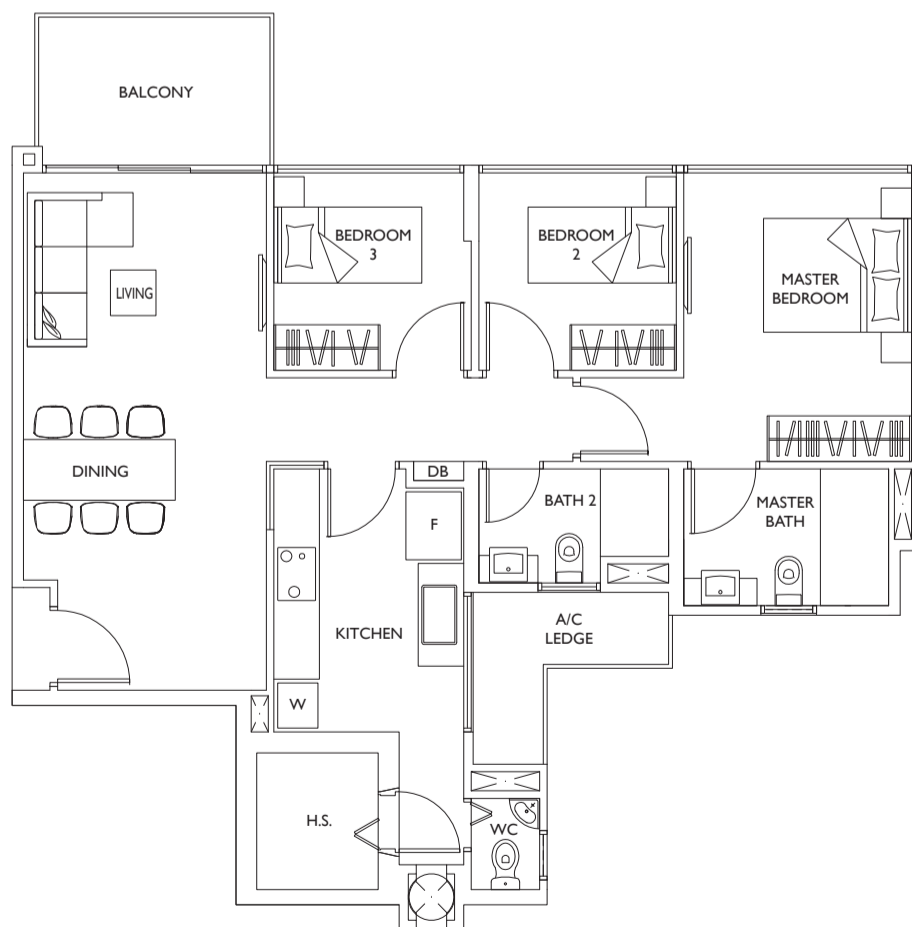
TYPE CIP

160sq.m. / 1,722sq.ft.

#01-16, #01-20,

#01-21, #01-36,

#01-42



TYPE CI

93sq.m. / 1,001sq.ft.

#02-16 to #06-16,

#02-20 to #06-20,

#02-21 to #06-21,

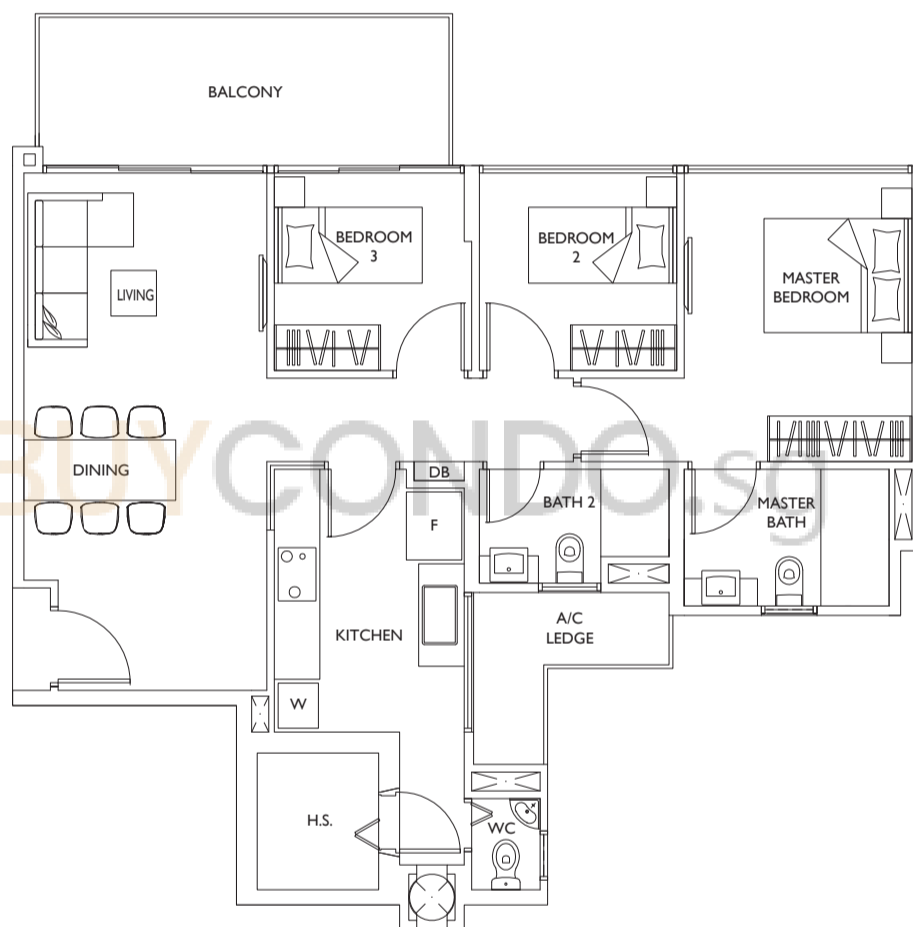
#02-36 to #06-36,

#02-42 to #06-42

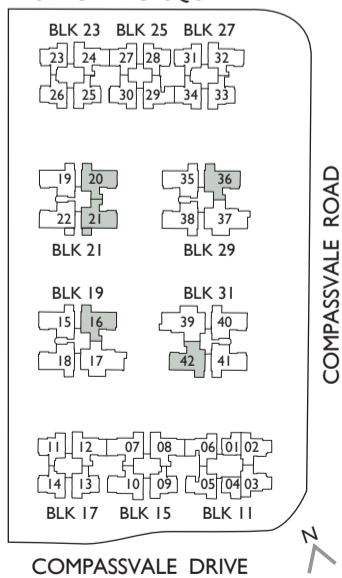
TYPE CIA

98sq.m. / 1,055sq.ft.

- #07-16 to #13-16,
- #07-20 to #13-20,
- #07-21 to #13-21,
- #07-36 to #13-36,
- #07-42 to #13-42

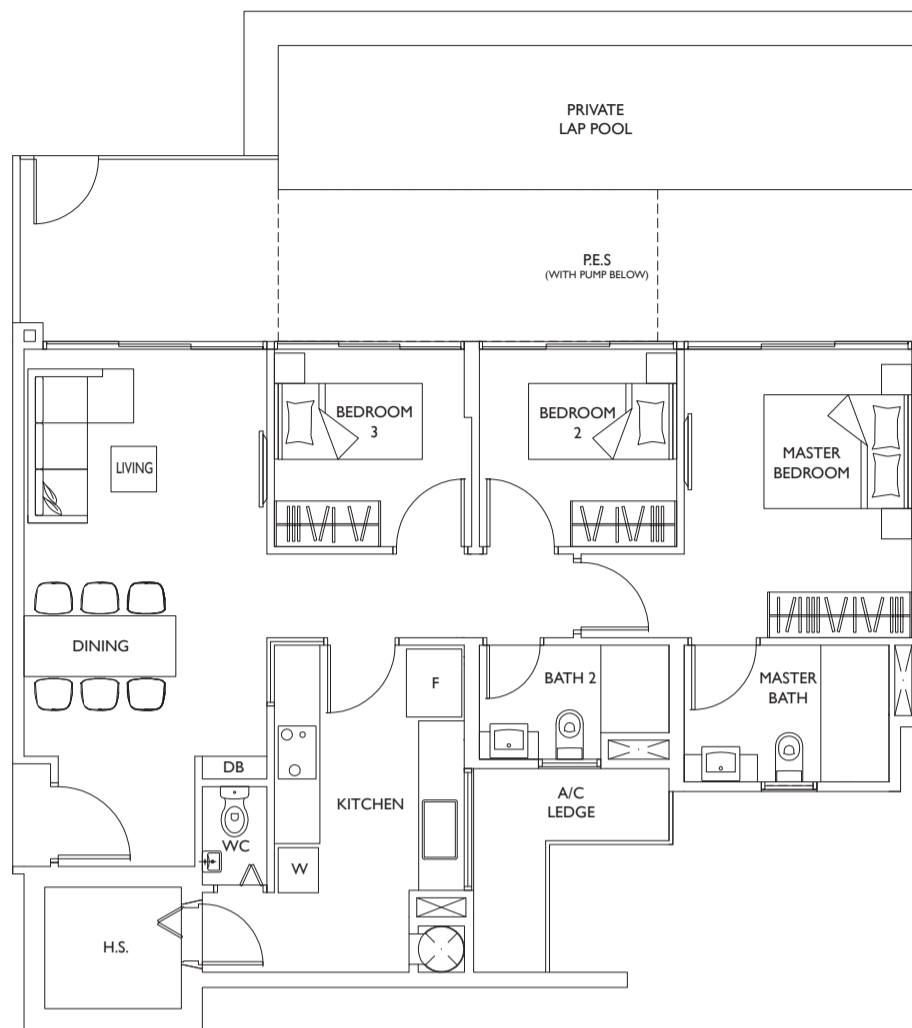


SENGKANG SQUARE



Area includes PES, A/C ledge, balcony, open/roof terrace, private lap pool, private jacuzzi, pump room and strata void, if any. Some units are mirror images of the apartment plans shown in the brochure. Please refer to the key plans for orientation. All plans are not drawn to scale and are subject to changes as may be approved by the relevant authorities. All floor areas are approximate measurements only and are subject to government resurvey.

3 BEDROOM



TYPE C2P

160sq.m. / 1,722sq.ft.

#01-15, #01-18,
#01-19, #01-22,
#01-35, #01-38,
#01-40, #01-41

BUYCONDO.sg



TYPE C2

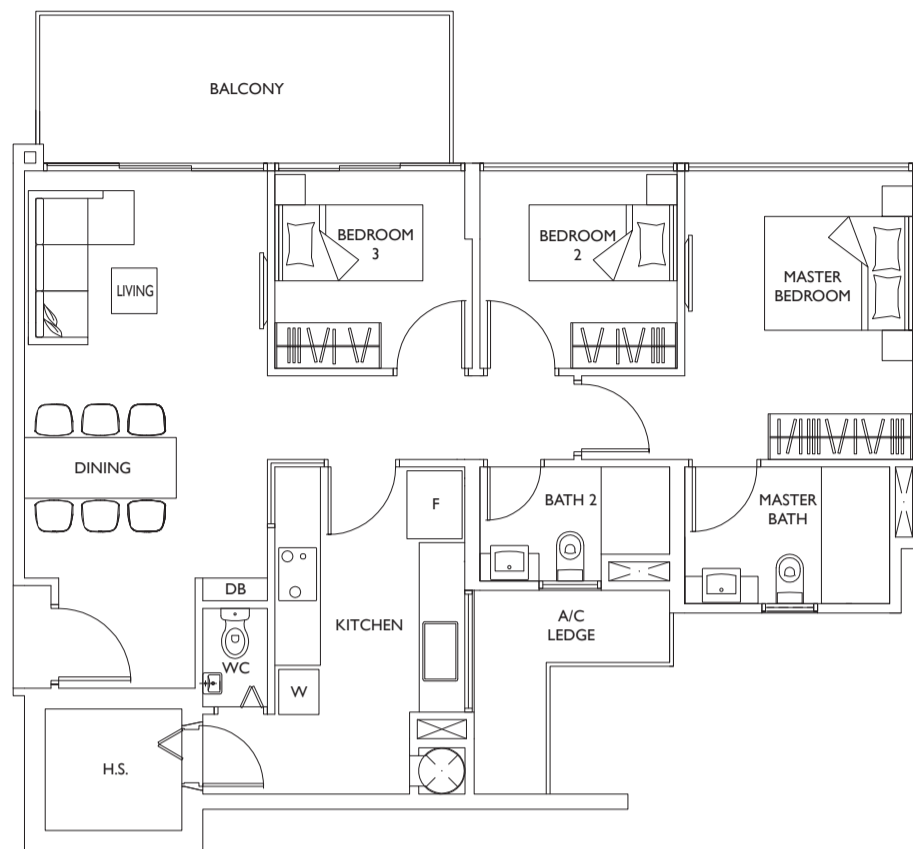
93sq.m. / 1,001sq.ft.

#02-15 to #06-15,
#02-18 to #06-18,
#02-19 to #06-19,
#02-22 to #06-22,
#02-35 to #06-35,
#02-38 to #06-38,
#02-40 to #06-40,
#02-41 to #06-41

TYPE C2A

98sq.m. / 1,055sq.ft.

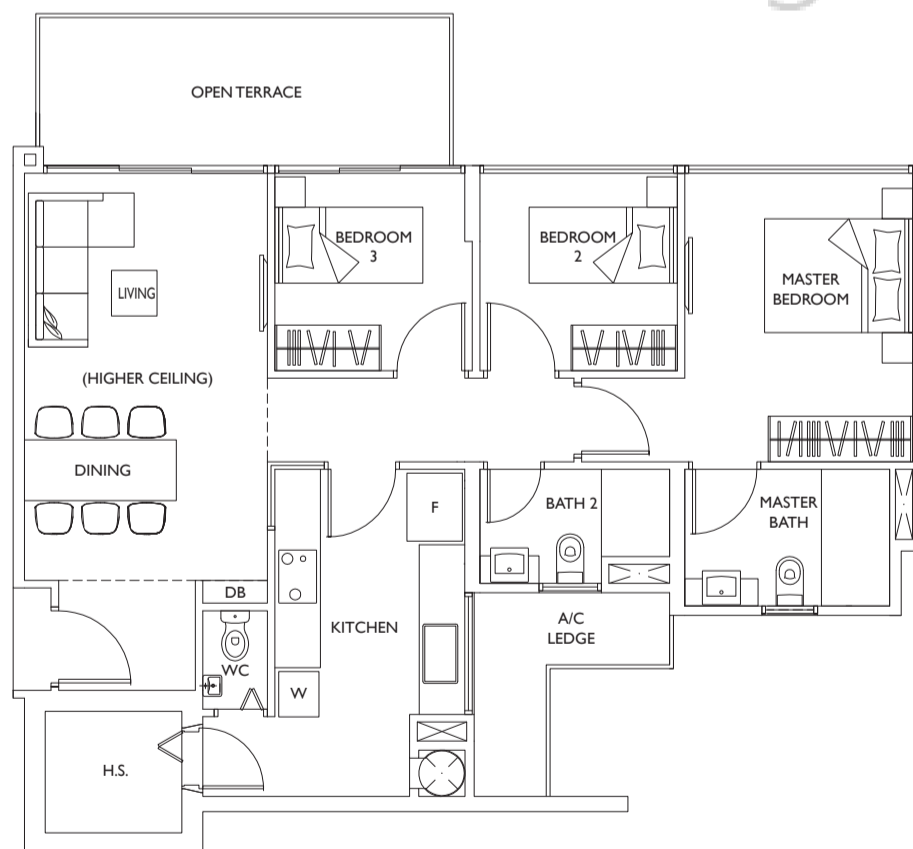
#07-15 to #14-15,
 #07-18 to #14-18,
 #07-19 to #14-19,
 #07-22 to #14-22,
 #07-35 to #14-35,
 #07-38 to #14-38,
 #07-40 to #14-40,
 #07-41 to #14-41



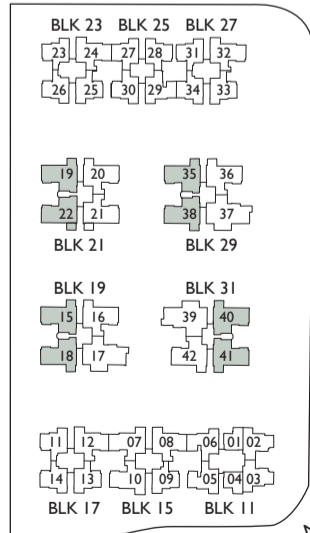
TYPE C2L

116sq.m. / 1,249sq.ft.

#15-15, #15-18,
 #15-19, #15-22,
 #15-35, #15-38,
 #15-40, #15-41



SENGKANG SQUARE

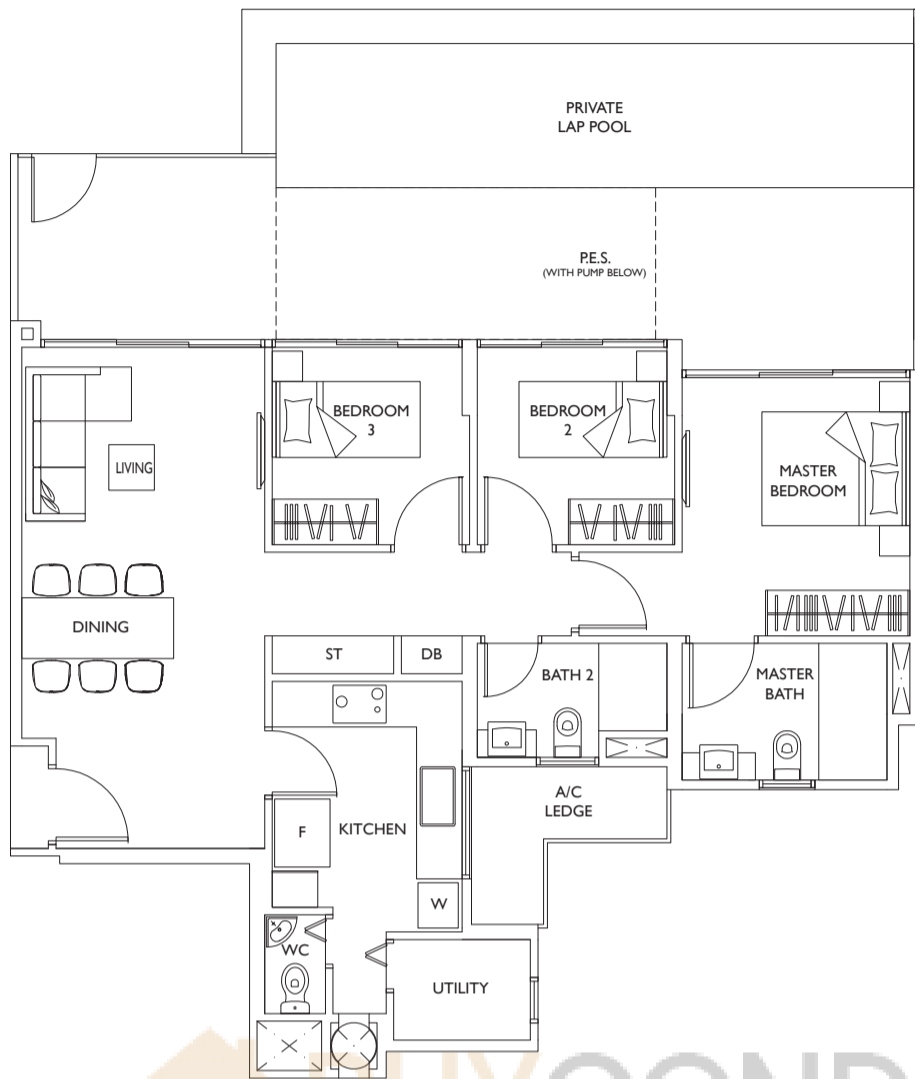


COMPASSVALE DRIVE

COMPASSVALE ROAD

Area includes PES, A/C ledge, balcony, open/roof terrace, private lap pool, private jacuzzi, pump room and strata void, if any. Some units are mirror images of the apartment plans shown in the brochure. Please refer to the key plans for orientation. All plans are not drawn to scale and are subject to changes as may be approved by the relevant authorities. All floor areas are approximate measurements only and are subject to government resurvey.

3 BEDROOM



TYPE C3P

157sq.m. / 1,690sq.ft.

#01-07, #01-08,

#01-10, #01-12,

#01-24, #01-32



TYPE C3

90sq.m. / 969sq.ft.

#02-07 to #06-07,

#02-08 to #06-08,

#02-10 to #06-10,

#02-12 to #06-12,

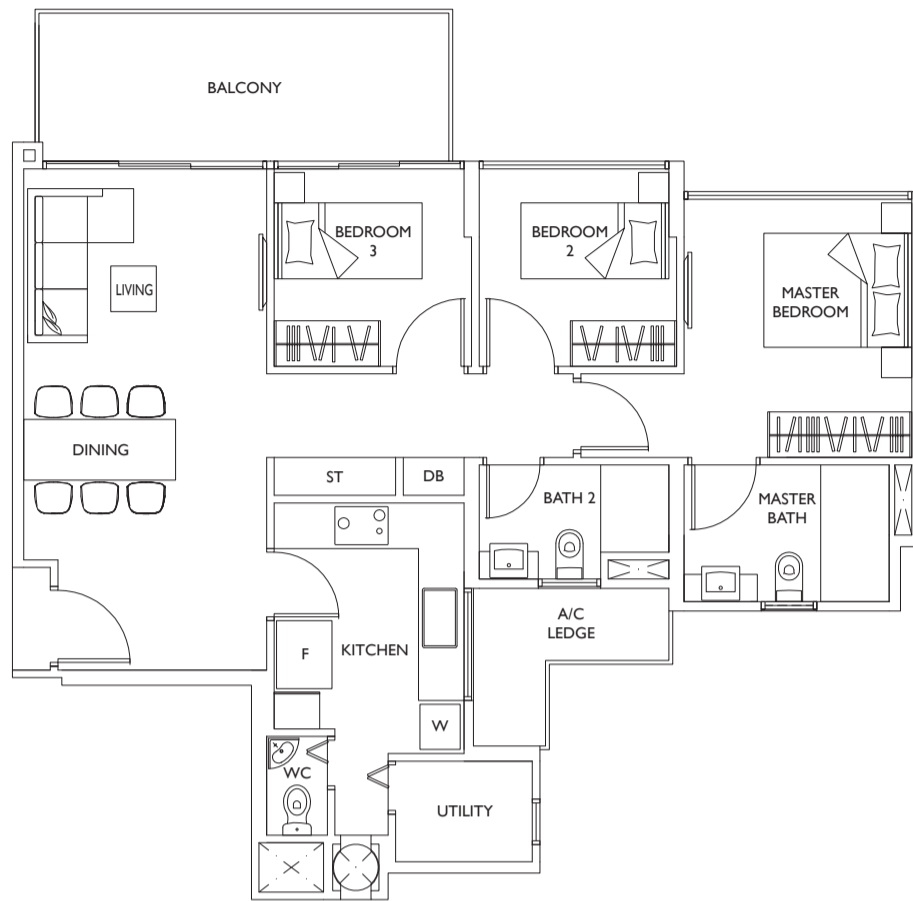
#02-24 to #06-24,

#02-32 to #06-32

TYPE C3A

94sq.m. / 1,012sq.ft.

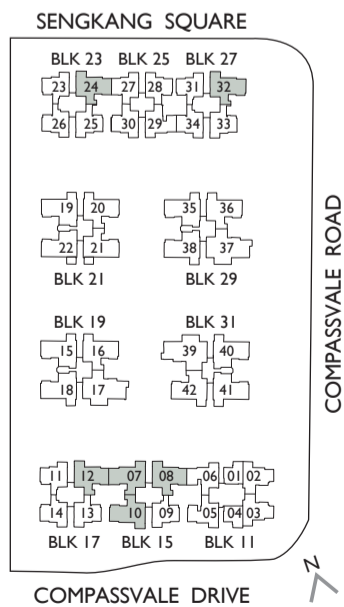
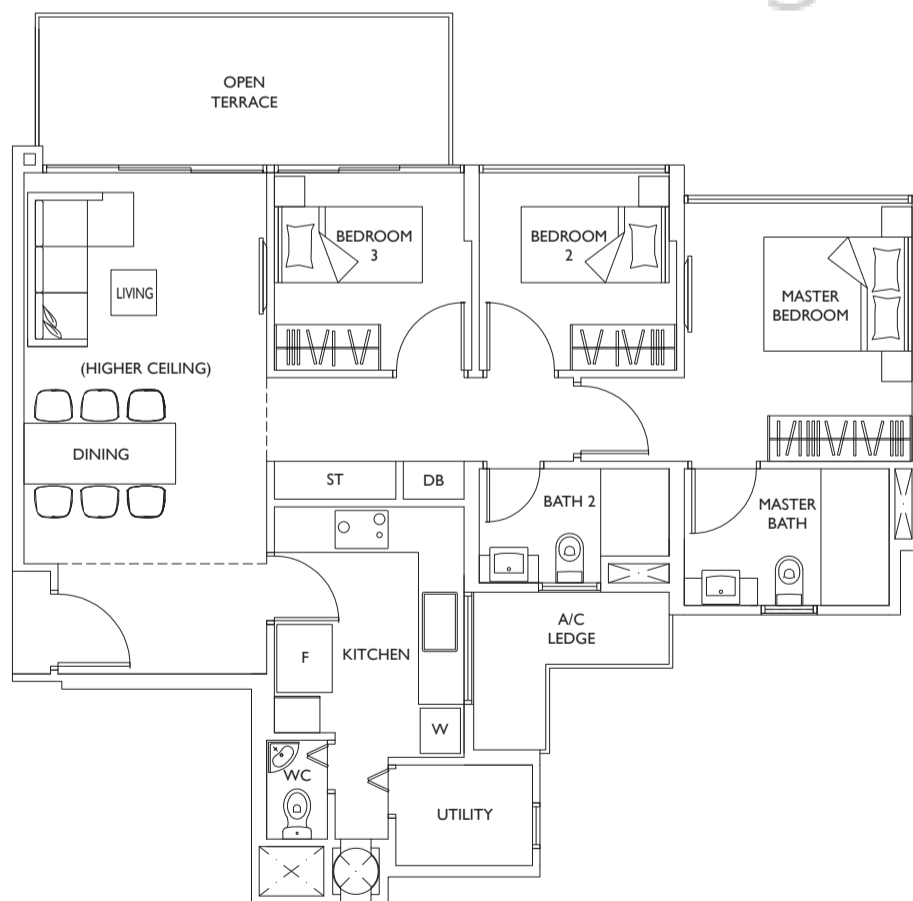
#07-07 to #14-07,
#07-08 to #14-08,
#07-10 to #14-10,
#07-12 to #14-12,
#07-24 to #14-24,
#07-32 to #14-32



TYPE C3L

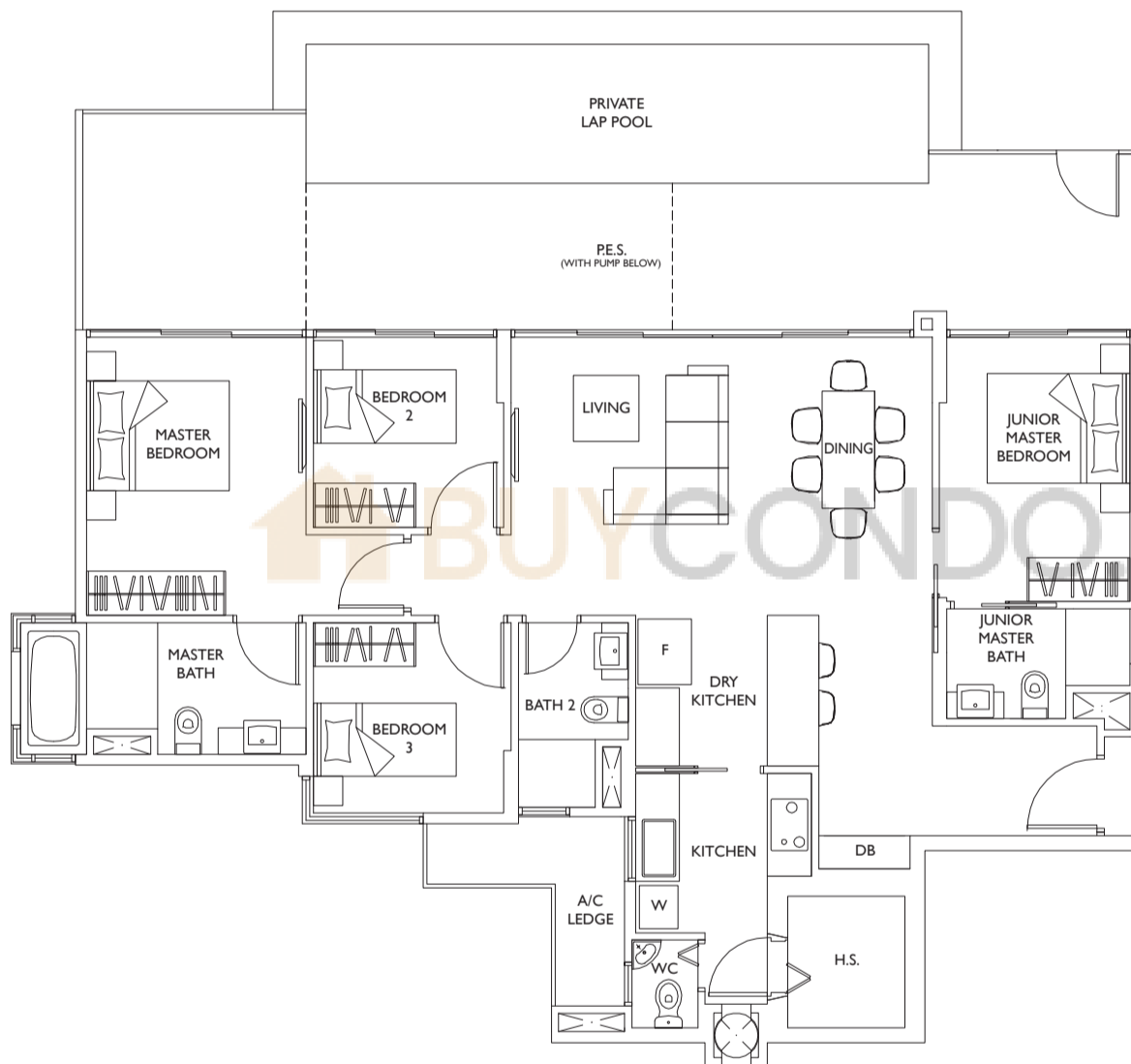
112sq.m. / 1,206sq.ft.

#15-07, #15-08,
#15-10, #15-12,
#15-24, #15-32



Area includes PES, A/C ledge, balcony, open/roof terrace, private lap pool, private jacuzzi, pump room and strata void, if any. Some units are mirror images of the apartment plans shown in the brochure. Please refer to the key plans for orientation. All plans are not drawn to scale and are subject to changes as may be approved by the relevant authorities. All floor areas are approximate measurements only and are subject to government resurvey.

4 BEDROOM



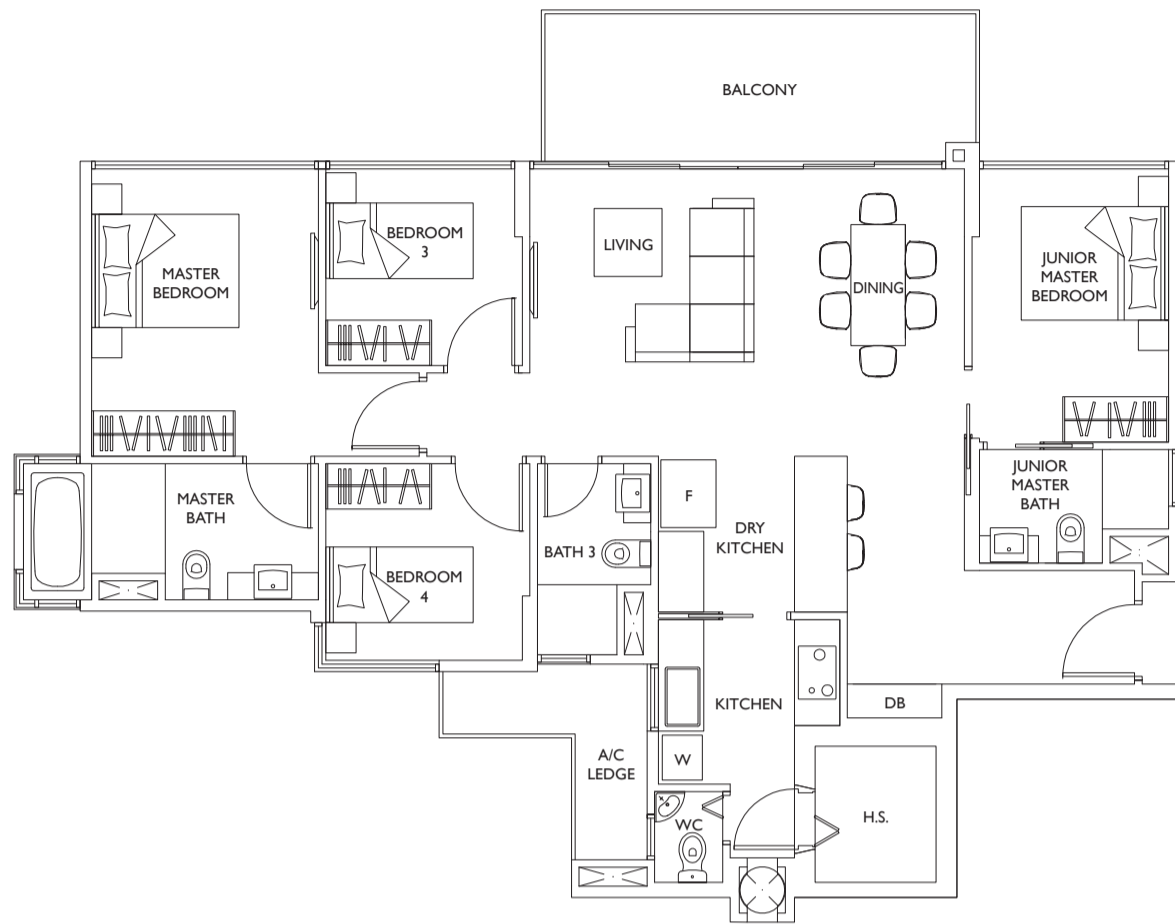
TYPE DIP
192sq.m. / 2,067sq.ft.
#01-17, #01-37, #01-39

Area includes PES, A/C ledge, balcony, open/roof terrace, private lap pool, private jacuzzi, pump room and strata void, if any. Some units are mirror images of the apartment plans shown in the brochure. Please refer to the key plans for orientation. All plans are not drawn to scale and are subject to changes as may be approved by the relevant authorities. All floor areas are approximate measurements only and are subject to government resurvey.

TYPE DI

122sq.m. / 1,313sq.ft.

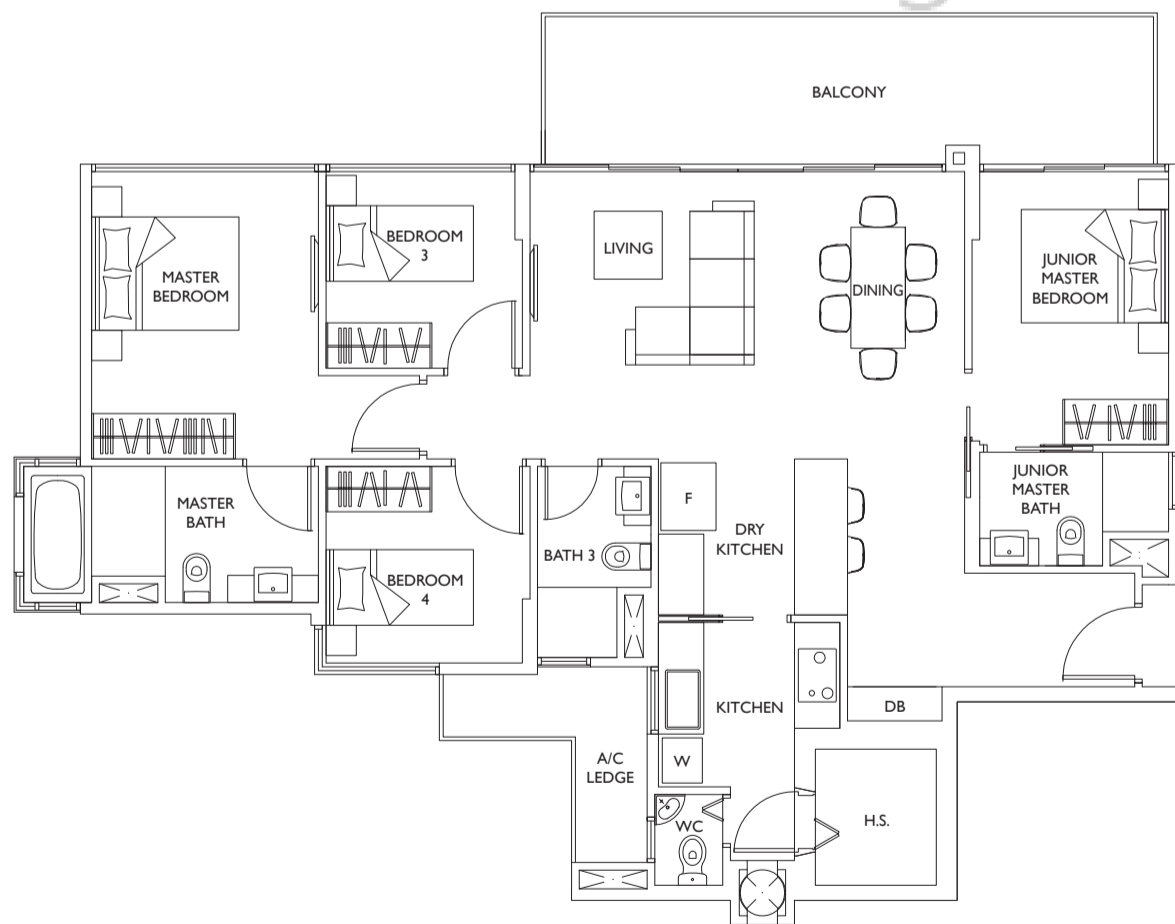
#02-17 to #06-17,
#02-37 to #06-37,
#02-39 to #06-39



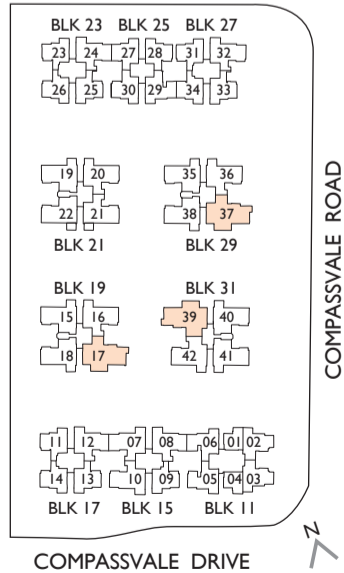
TYPE DIA

127sq.m. / 1,367sq.ft.

#07-17 to #13-17,
#07-37 to #13-37,
#07-39 to #13-39



SENGKANG SQUARE



Area includes PES, A/C ledge, balcony, open/roof terrace, private lap pool, private jacuzzi, pump room and strata void, if any. Some units are mirror images of the apartment plans shown in the brochure. Please refer to the key plans for orientation. All plans are not drawn to scale and are subject to changes as may be approved by the relevant authorities. All floor areas are approximate measurements only and are subject to government resurvey.

PENTHOUSE

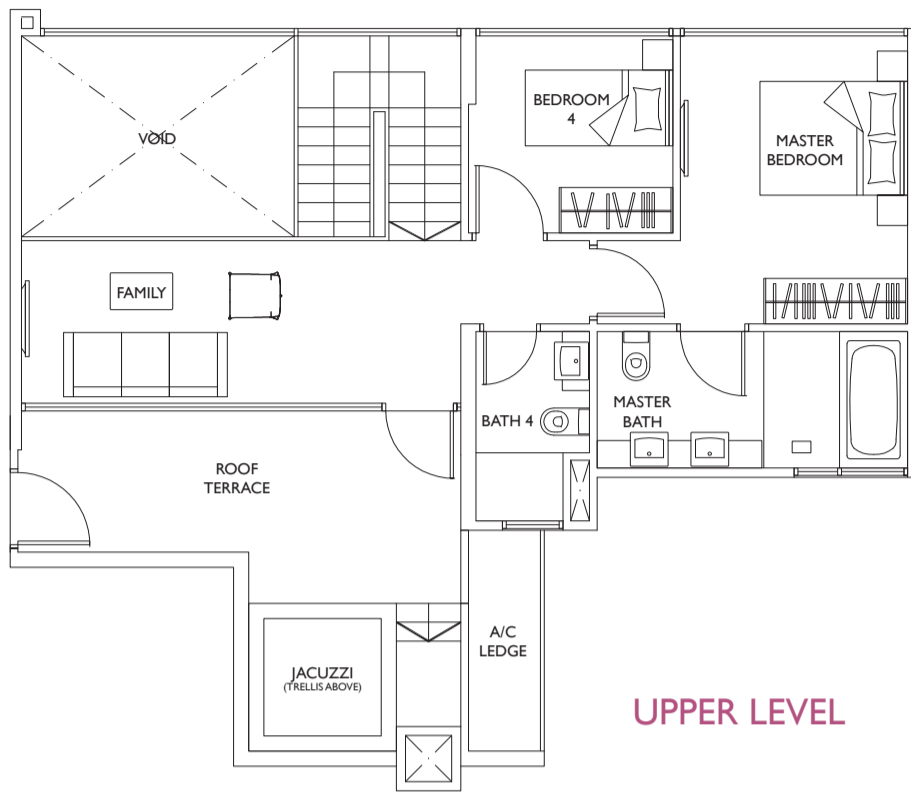
TYPE PH I

201sq.m. / 2,164sq.ft.

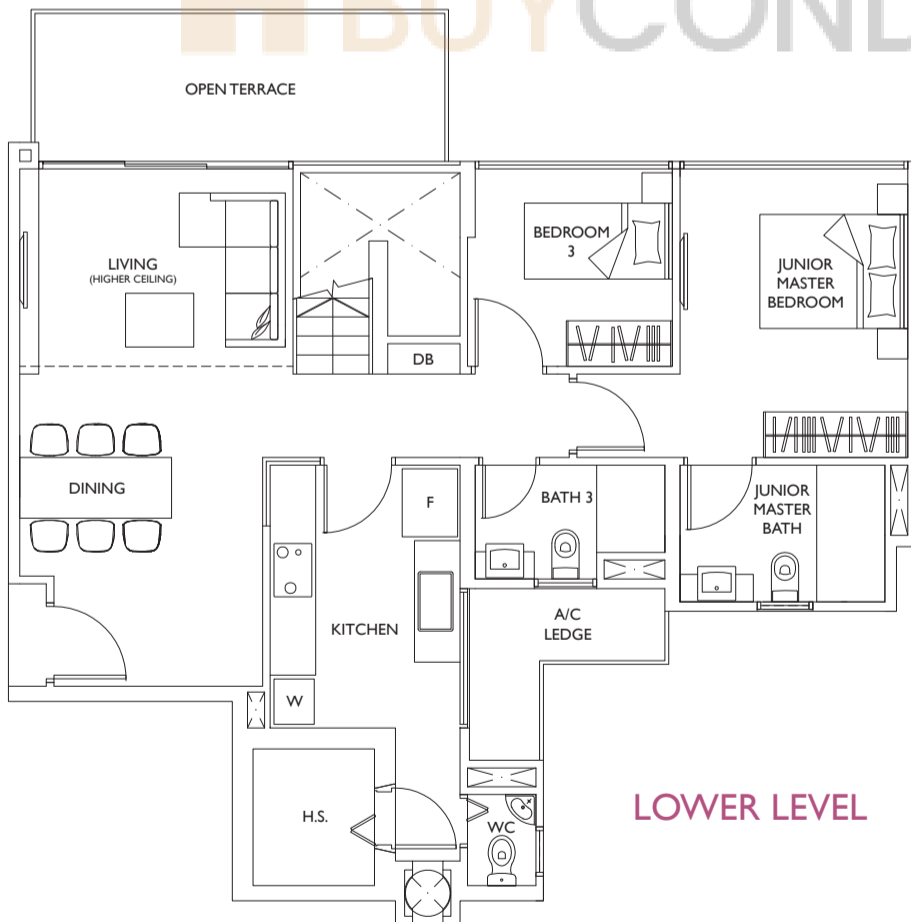
#14-16, #14-20,

#14-21, #14-36,

#14-42

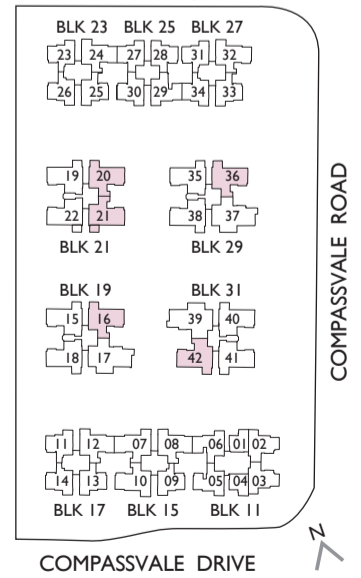


UPPER LEVEL



LOWER LEVEL

SENGKANG SQUARE

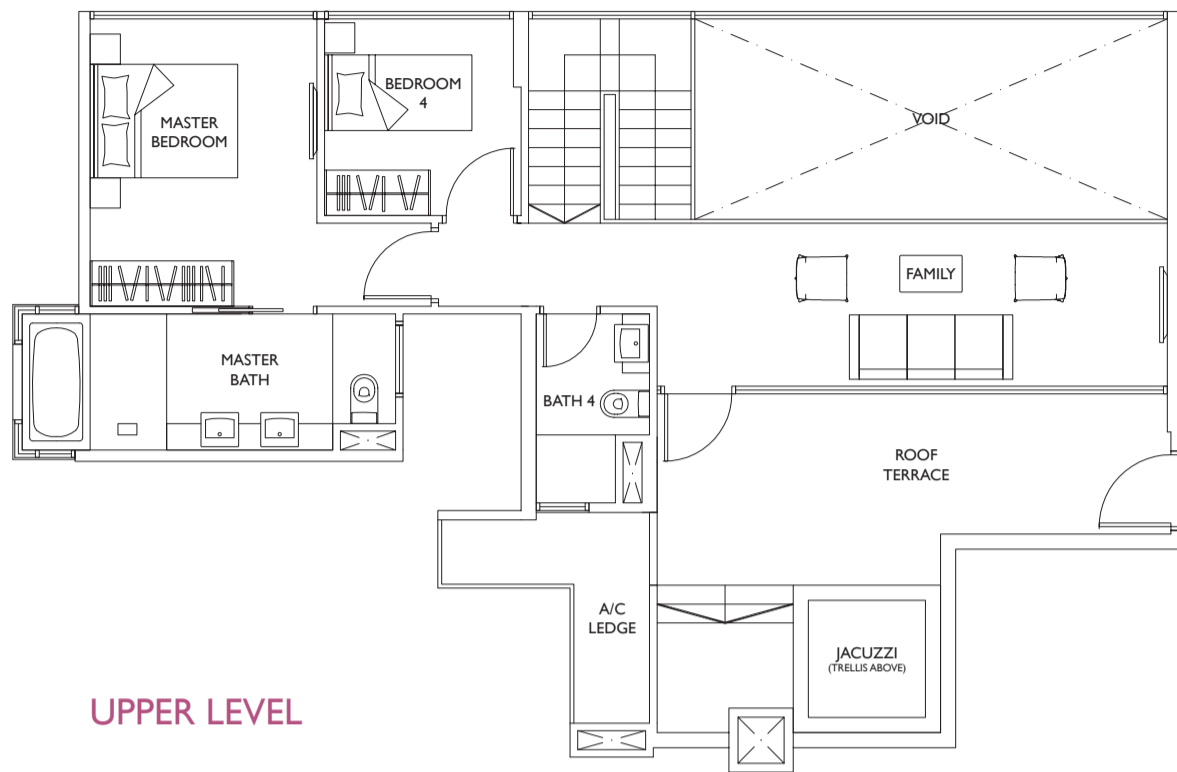


Area includes PES, A/C ledge, balcony, open/roof terrace, private lap pool, private jacuzzi, pump room and strata void, if any. Some units are mirror images of the apartment plans shown in the brochure. Please refer to the key plans for orientation. All plans are not drawn to scale and are subject to changes as may be approved by the relevant authorities. All floor areas are approximate measurements only and are subject to government resurvey.

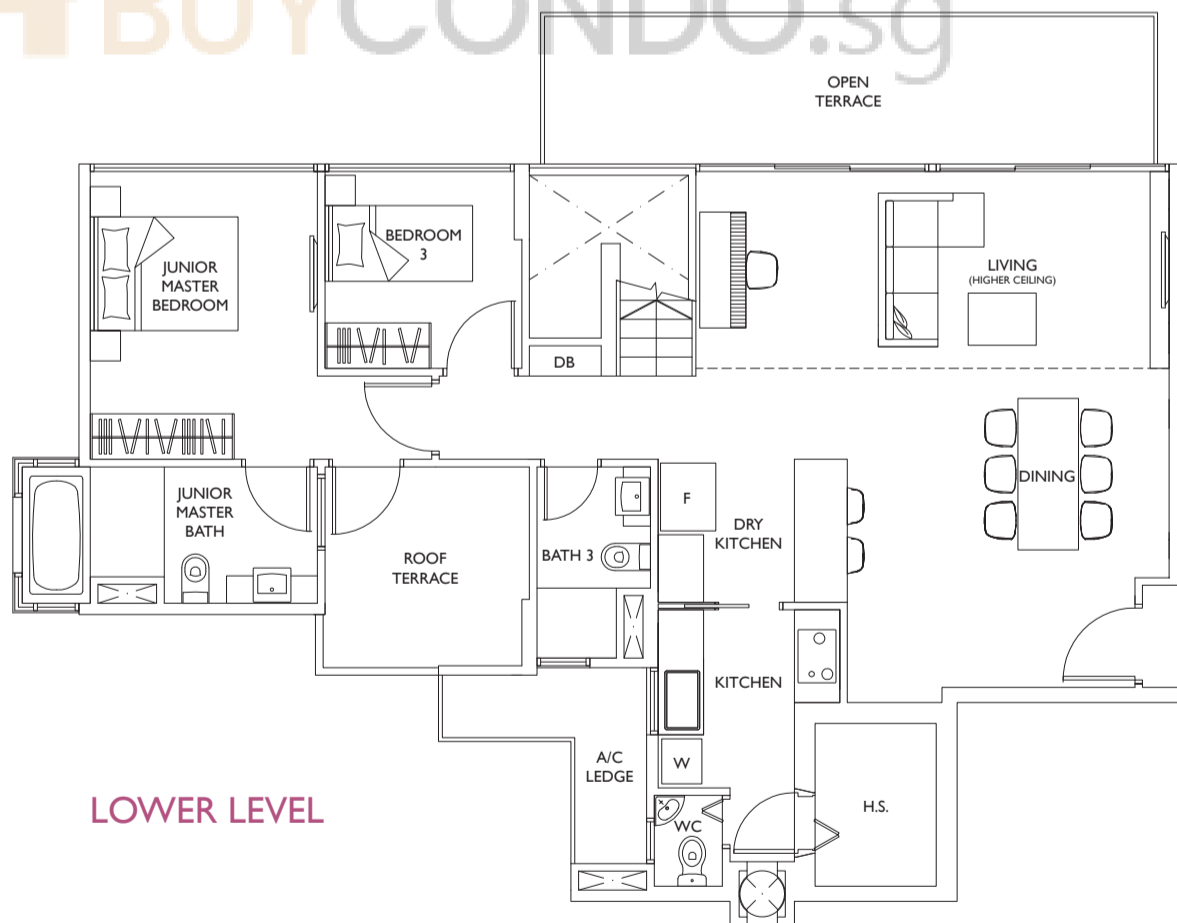
TYPE PH2

255sq.m. / 2,745sq.ft.

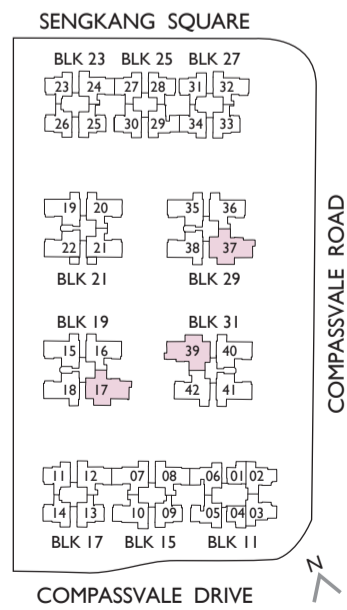
#14-17, #14-37, #14-39



UPPER LEVEL



LOWER LEVEL



Area includes PES, A/C ledge, balcony, open/roof terrace, private lap pool, private jacuzzi, pump room and strata void, if any. Some units are mirror images of the apartment plans shown in the brochure. Please refer to the key plans for orientation. All plans are not drawn to scale and are subject to changes as may be approved by the relevant authorities. All floor areas are approximate measurements only and are subject to government resurvey.