

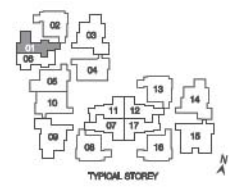
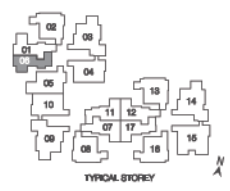
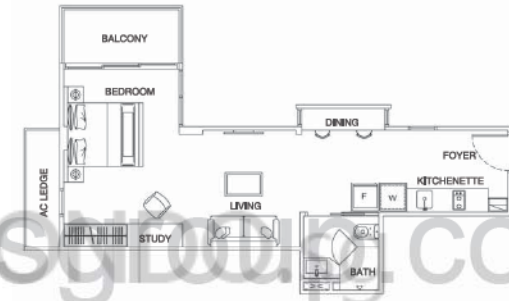
TYPE A1 (Studio)

Unit #02-06 to #04-06
Area 40 sq m / 431 sq ft
(Inclusive of AC Ledge)



TYPE A2 (Studio)

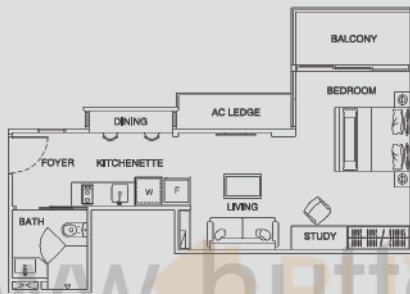
Unit #02-01 to #04-01
Area 48 sq m / 517 sq ft
(Inclusive of Balcony and AC Ledge)



All plans are subjected to amendments as approved by the relevant authorities. Floor areas are approximate measurements and subject to final survey.

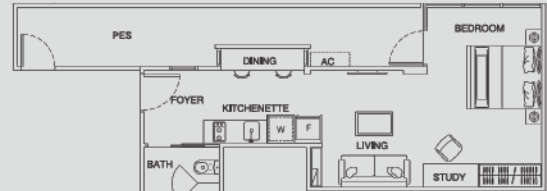
TYPE A3 (Studio)

Unit #02-11 to #05-11
Area 44 sq m / 474 sq ft
(Inclusive of Balcony and AC Ledge)

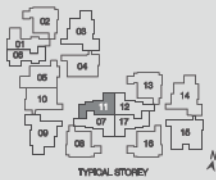


TYPE A3a (Studio)

Unit #01-11
Area 54 sq m / 581 sq ft
(Inclusive of PES)



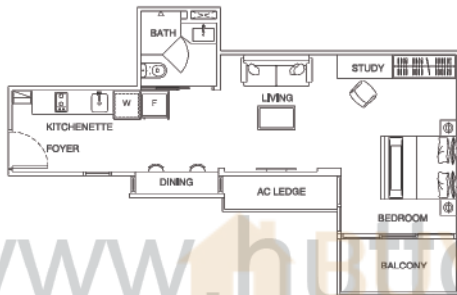
www.huttonsgroup.com



All plans are subjected to amendments as approved by the relevant authorities. Floor areas are approximate measurements and subject to final survey.

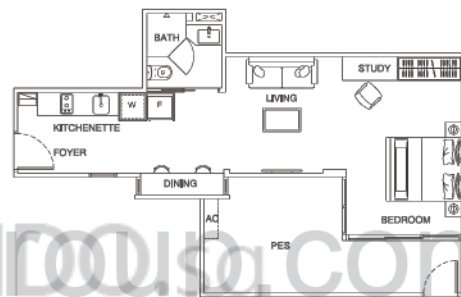
TYPE A4 (Studio)

Unit #02-07 to #05-07
 Area 48 sq m / 517 sq ft
 (Inclusive of Balcony and AC Ledge)



TYPE A4a (Studio)

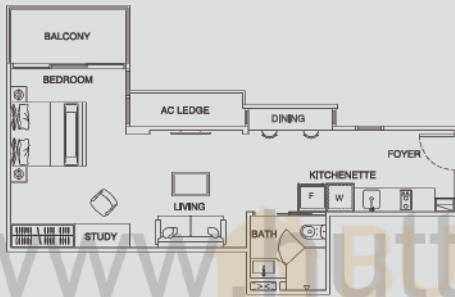
Unit #01-07
 Area 56 sq m / 603 sq ft
 (Inclusive of PES)



All plans are subjected to amendments as approved by the relevant authorities. Floor areas are approximate measurements and subject to final survey.

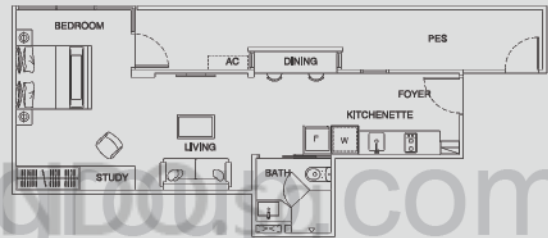
TYPE A5 (Studio)

Unit #02-12 to #05-12
Area 48 sq m / 517 sq ft
(Inclusive of Balcony and AC Ledge)



TYPE A5a (Studio)

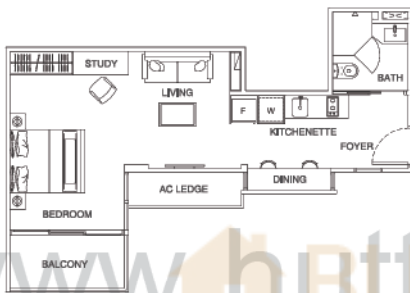
Unit #01-12
Area 57 sq m / 614 sq ft
(Inclusive of PES)



All plans are subjected to amendments as approved by the relevant authorities. Floor areas are approximate measurements and subject to final survey.

TYPE A6 (Studio)

Unit #02-17 to #05-17
 Area 44 sq m / 474 sq ft
 (Inclusive of Balcony and AC Ledge)



TYPE A6a (Studio)

Unit #01-17
 Area 52 sq m / 560 sq ft
 (Inclusive of PES)



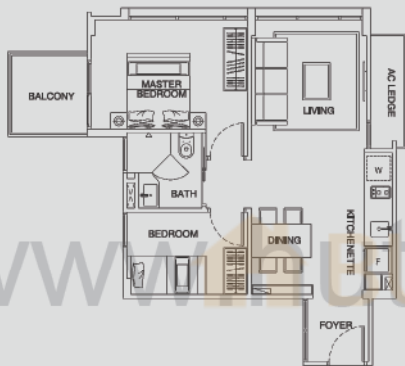
www.huttonsgroup.com



All plans are subjected to amendments as approved by the relevant authorities. Floor areas are approximate measurements and subject to final survey.

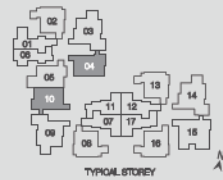
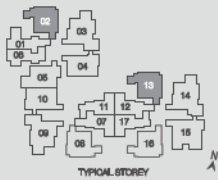
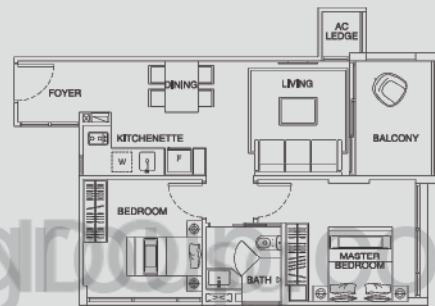
TYPE B1 (2-Bedroom)

Unit #02-02 to #04-02 and #02-13 to 04-13
 Area 58 sq m / 624 sq ft
 (Inclusive of Balcony and AC Ledge)



TYPE B2 (2-Bedroom)

Unit #02-04 to #04-04 and #02-10 to #04-10
 Area 58 sq m / 624 sq ft
 (Inclusive of Balcony and AC Ledge)



All plans are subjected to amendments as approved by the relevant authorities. Floor areas are approximate measurements and subject to final survey.

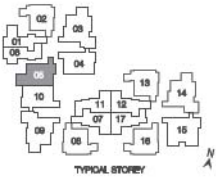
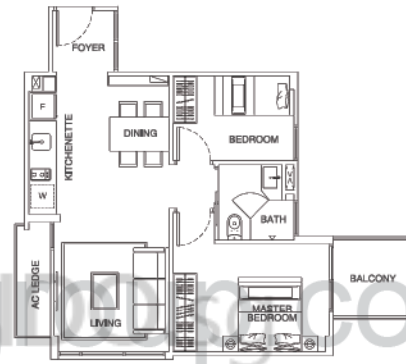
TYPE B3 (2-Bedroom)

Unit #02-05 to #04-05
 Area 60 sq m / 646 sq ft
 (Inclusive of Balcony and AC Ledge)



TYPE B4 (2-Bedroom)

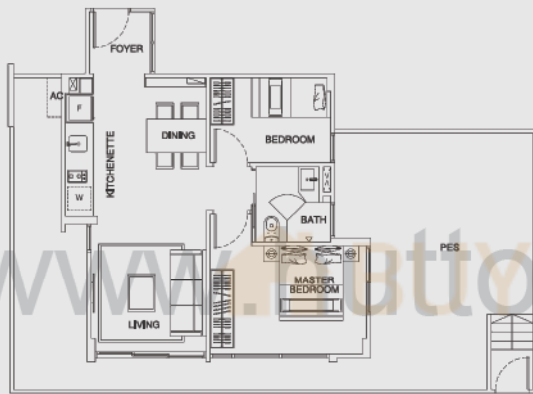
Unit #02-08 to #04-08
 Area 58 sq m / 624 sq ft
 (Inclusive of Balcony and AC Ledge)



All plans are subjected to amendments as approved by the relevant authorities. Floor areas are approximate measurements and subject to final survey.

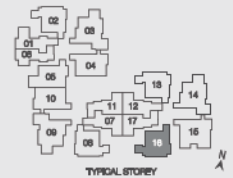
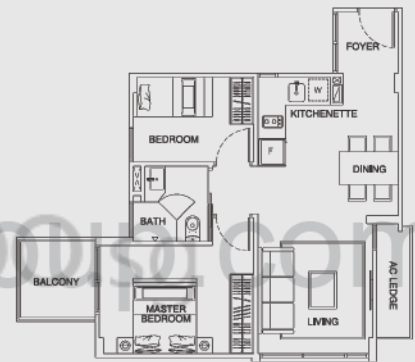
TYPE B4a (2-Bedroom)

Unit #01-08
 Area 101 sq m / 1,087 sq ft
 (Inclusive of PES)



TYPE B5 (2-Bedroom)

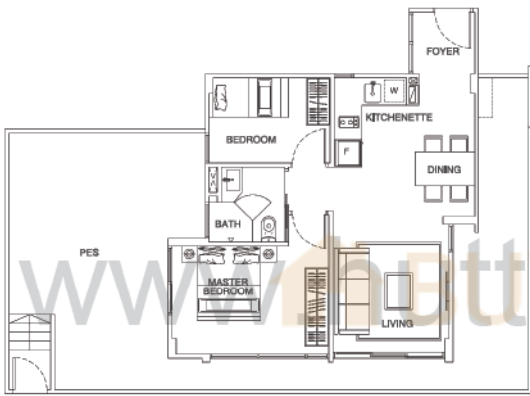
Unit #02-16 to #04-16
 Area 58 sq m / 624 sq ft
 (Inclusive of Balcony and AC Ledge)



All plans are subjected to amendments as approved by the relevant authorities. Floor areas are approximate measurements and subject to final survey.

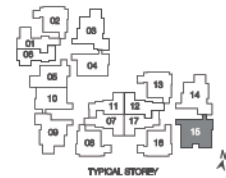
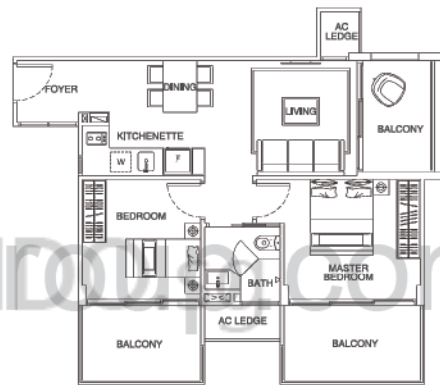
TYPE B5a (2-Bedroom)

Unit #01-16
 Area 101 sq m / 1,087 sq ft
 (Inclusive of PES)



TYPE B6 (2-Bedroom)

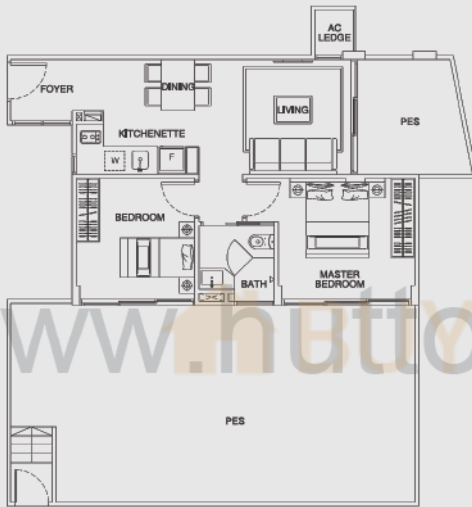
Unit #02-15 to #04-15
 Area 74 sq m / 797 sq ft
 (Inclusive of Balcony and AC Ledge)



All plans are subjected to amendments as approved by the relevant authorities. Floor areas are approximate measurements and subject to final survey.

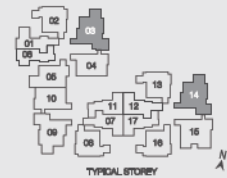
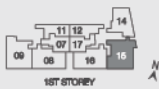
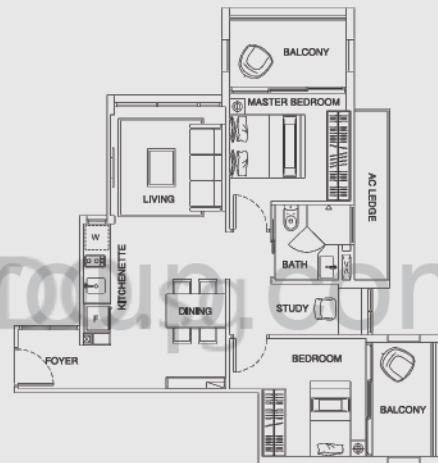
TYPE B6a (2-Bedroom)

Unit #01-15
 Area 115 sq m / 1,238 sq ft
 (Inclusive of PES and AC Ledge)



TYPE C1 (2-Bedroom+Study)

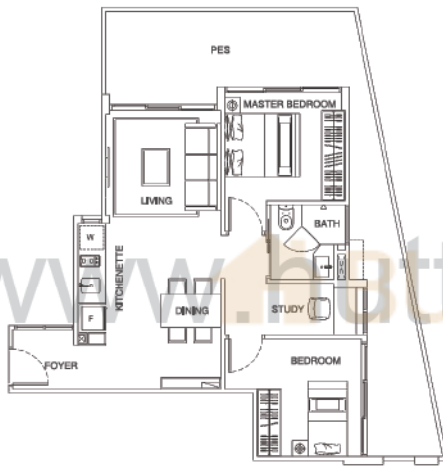
Unit #02-03 to #04-03 and #02-14 to #04-14
 Area 73 sq m / 786 sq ft
 (Inclusive of Balcony and AC Ledge)



All plans are subjected to amendments as approved by the relevant authorities. Floor areas are approximate measurements and subject to final survey.

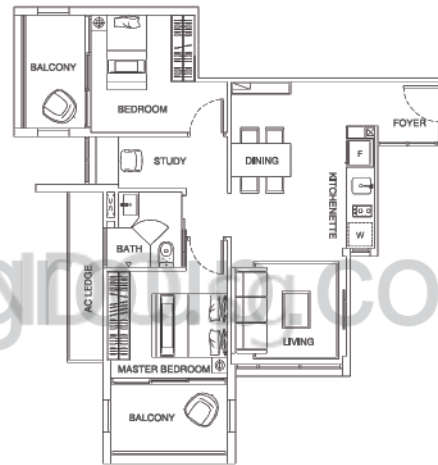
TYPE C1a (2-Bedroom+Study)

Unit #01-14
 Area 86 sq m / 926 sq ft
 (Inclusive of PES)



TYPE C2 (2-Bedroom+Study)

Unit #02-09 to #04-09
 Area 73 sq m / 786 sq ft
 (Inclusive of Balcony and AC Ledge)



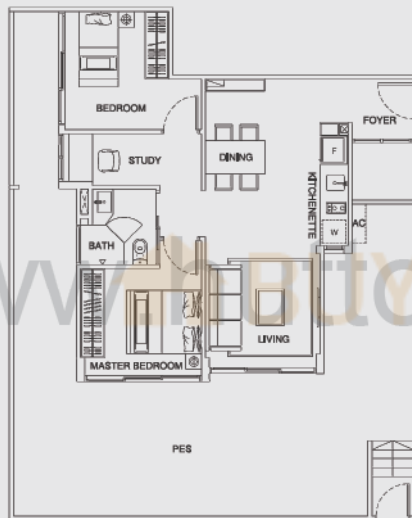
www.huttonsingid.com



All plans are subjected to amendments as approved by the relevant authorities. Floor areas are approximate measurements and subject to final survey.

TYPE C2a (2-Bedroom+Study)

Unit #01-09
Area 119 sq m / 1,281 sq ft
(Inclusive of PES)



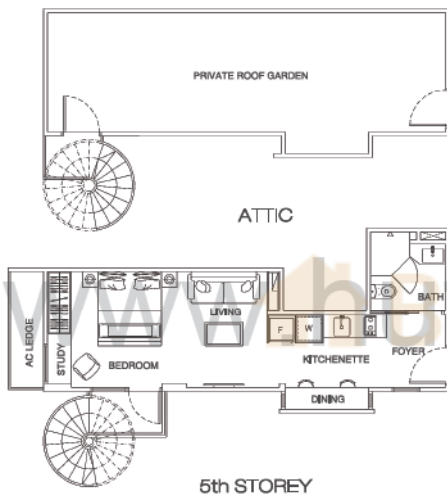
www.titocasgroup.sg.com



All plans are subjected to amendments as approved by the relevant authorities. Floor areas are approximate measurements and subject to final survey.

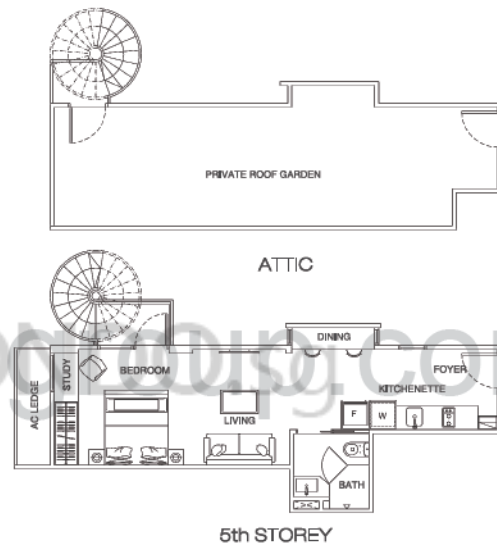
TYPE A1p (Studio Penthouse)

Unit #05-06
 Area 74 sq m / 797 sq ft
 (Inclusive of Roof Garden and AC Ledge)



TYPE A2p (Studio Penthouse)

Unit #05-01
 Area 81 sq m / 872 sq ft
 (Inclusive of Roof Garden and AC Ledge)



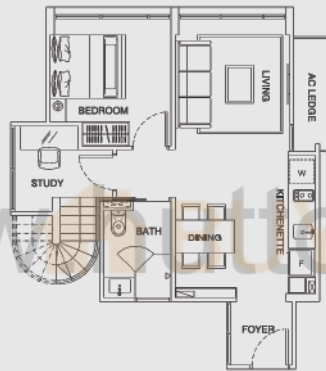
0 5 METRES



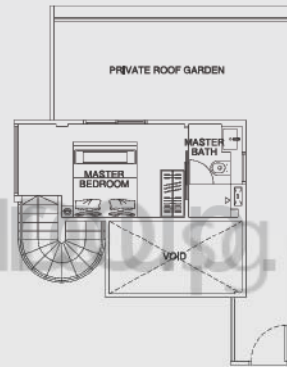
All plans are subjected to amendments as approved by the relevant authorities. Floor areas are approximate measurements and subject to final survey.

TYPE B1p (2-Bedroom Penthouse)

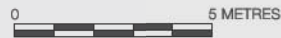
Unit #05-02 and #05-13
Area 93 sq m / 1,001 sq ft
(Inclusive of Roof Garden and AC Ledge)



5th STOREY



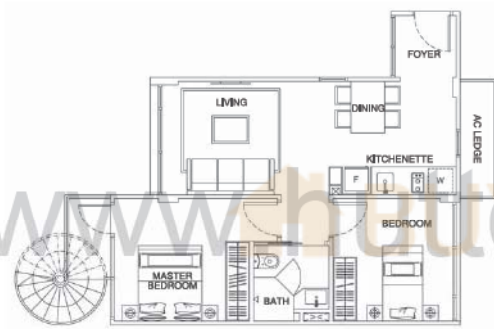
ATTIC



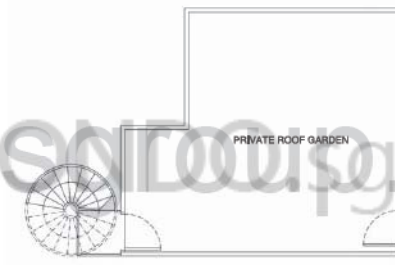
All plans are subjected to amendments as approved by the relevant authorities, Floor areas are approximate measurements and subject to final survey.

TYPE B3p (2-Bedroom Penthouse)

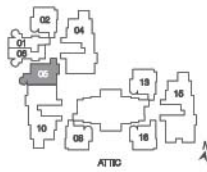
Unit #05-05
Area 101 sq m / 1,087 sq ft
(Inclusive of Roof Garden and AC Ledge)



5th STOREY



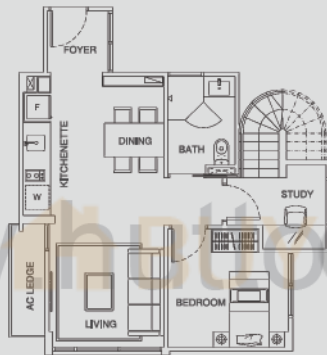
ATTIC



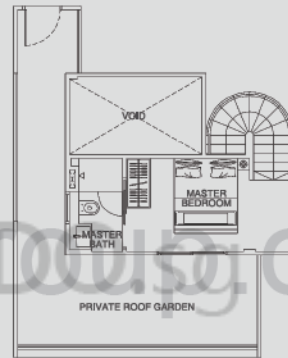
All plans are subjected to amendments as approved by the relevant authorities, Floor areas are approximate measurements and subject to final survey.

TYPE B4p (2-Bedroom Penthouse)

Unit #05-08
 Area 91 sq m / 980 sq ft
 (Inclusive of Roof Terrace and AC Ledge)



5th STOREY



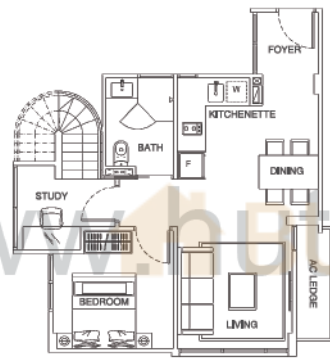
ATTIC



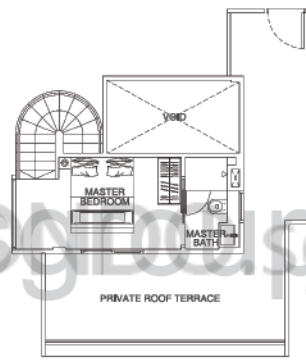
All plans are subjected to amendments as approved by the relevant authorities, Floor areas are approximate measurements and subject to final survey.

TYPE B5p (2-Bedroom Penthouse)

Unit #05-16
Area 94 sq m / 1,012 sq ft
(Inclusive of Roof Garden and AC Ledge)



5th STOREY



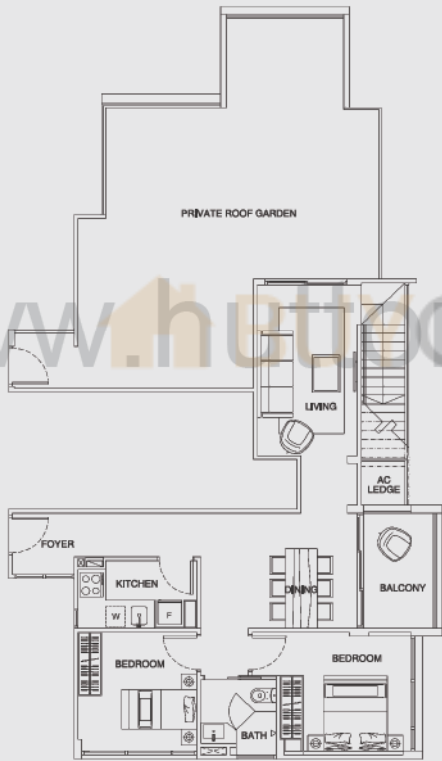
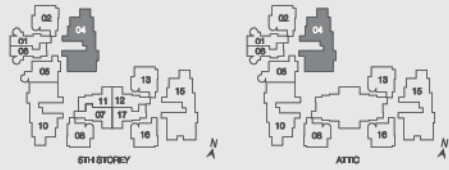
ATTIC



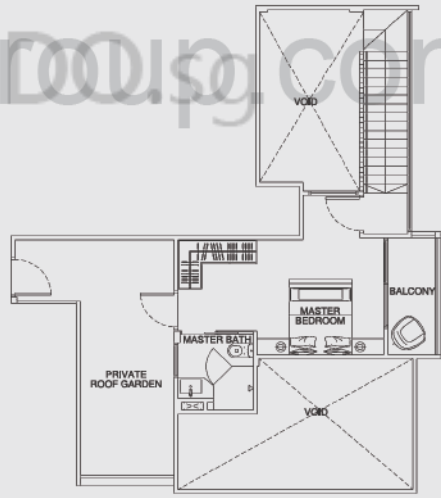
All plans are subjected to amendments as approved by the relevant authorities. Floor areas are approximate measurements and subject to final survey.

TYPE C1p (3-Bedroom Penthouse)

Unit #05-04
 Area 176 sq m / 1,894 sq ft
 (Inclusive of Roof Garden, Balcony and AC Ledge)



5th STOREY



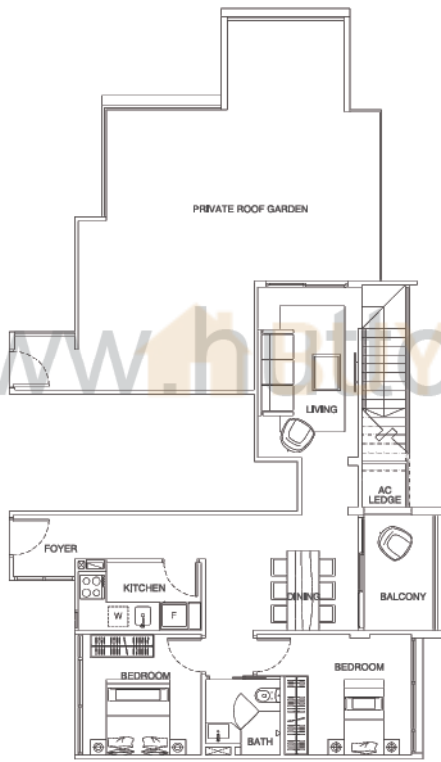
ATTIC



All plans are subjected to amendments as approved by the relevant authorities. Floor areas are approximate measurements and subject to final survey.

TYPE C2p (3-Bedroom Penthouse)

Unit #05-10
 Area 173 sq m / 1,862 sq ft
 (Inclusive of Roof Garden, Balcony and AC Ledge)



5th STOREY



5TH STOREY



ATTIC



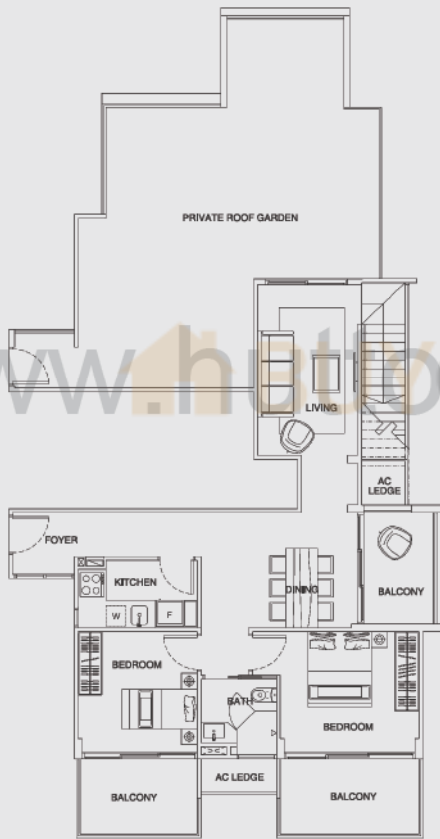
ATTIC



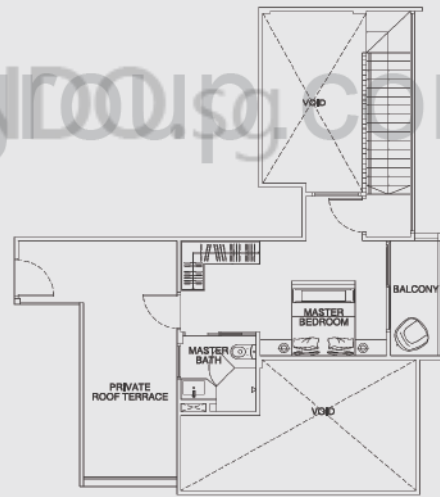
All plans are subjected to amendments as approved by the relevant authorities. Floor areas are approximate measurements and subject to final survey.

TYPE C3p (3-Bedroom Penthouse)

Unit #05-15
 Area 191 sq m / 2,056 sq ft
 (Inclusive of Roof Garden, Balcony and AC Ledge)



5th STOREY



ATTIC

All plans are subjected to amendments as approved by the relevant authorities. Floor areas are approximate measurements and subject to final survey.