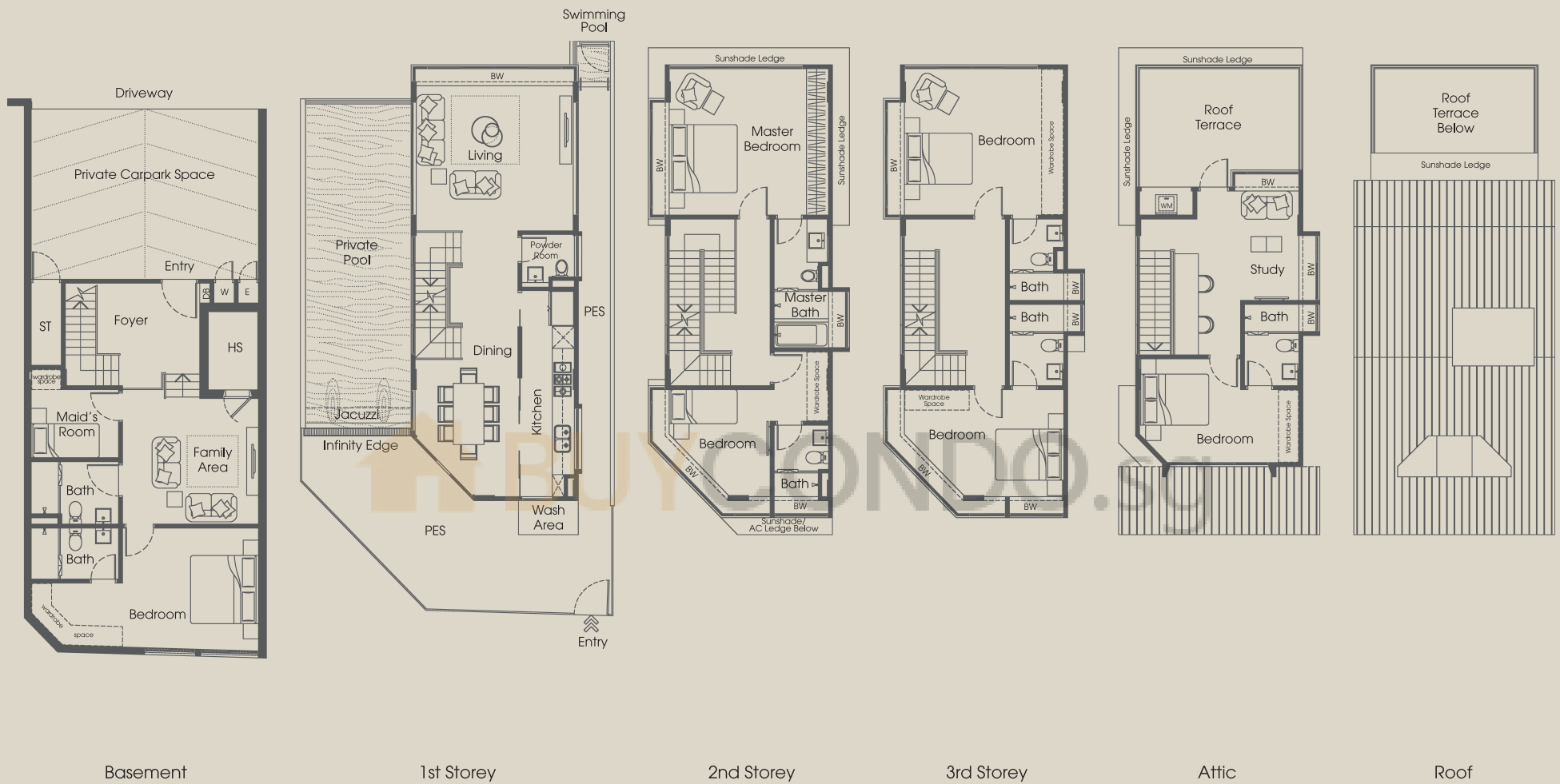


# 116 Bukit Teresa Road

Area 8,676 sq ft / 806 sq m

(inclusive of private carpark, PES, private pool, A/C ledge, sunshade ledge, bay window, roof, terrace & void)



Basement

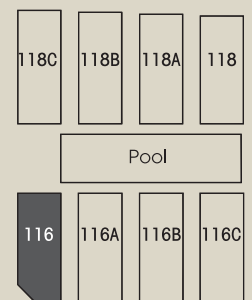
1st Storey

2nd Storey

3rd Storey

Attic

Roof

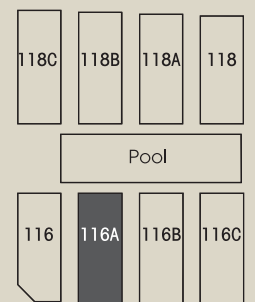
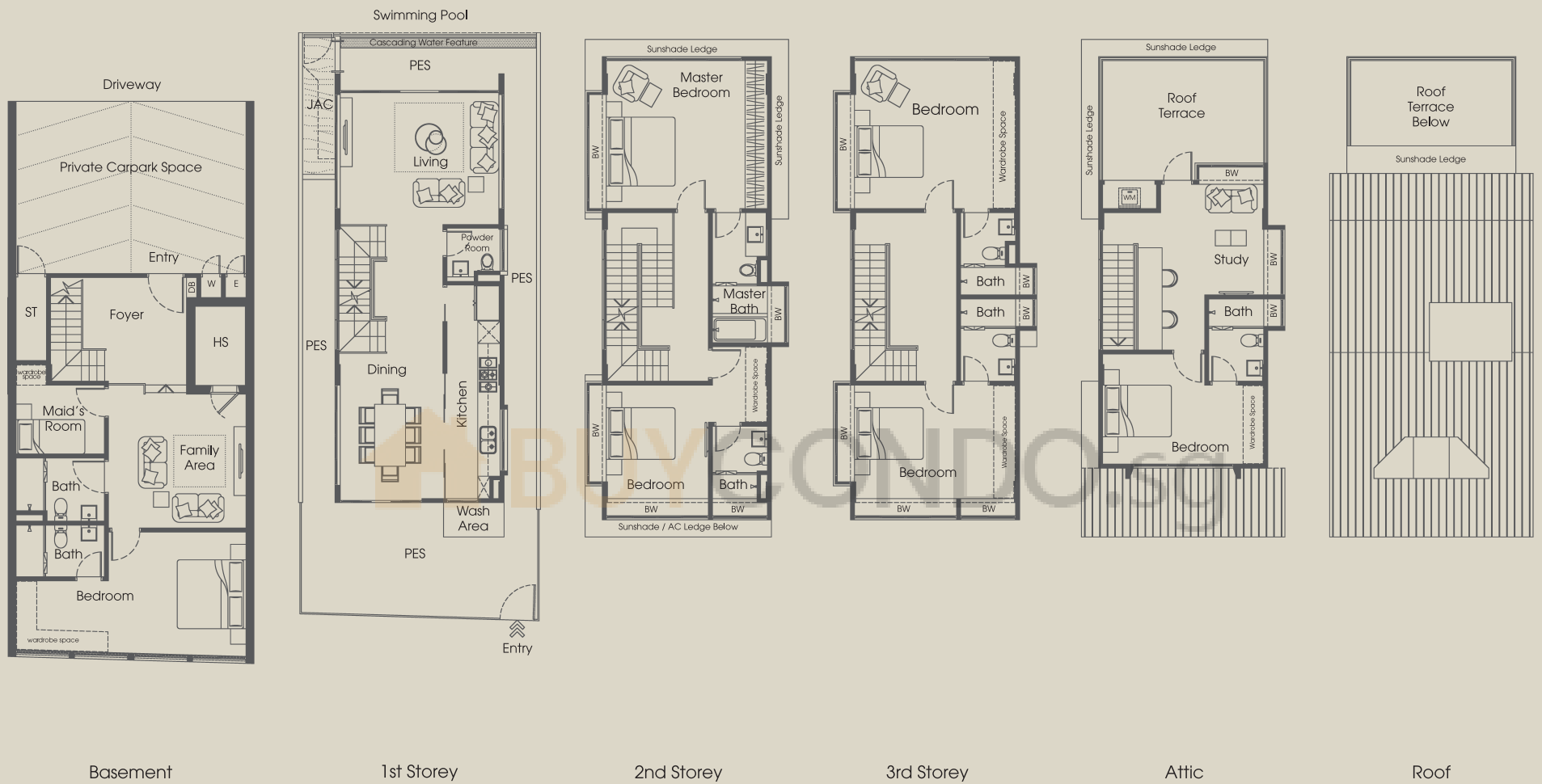


All plans are subject to amendments as approved by the relevant authorities. Floor areas are approximate measurements and subject to final survey.

# 116A Bukit Teresa Road

Area 7,492 sq ft / 696 sq m

(inclusive of private carpark, PES, A/C ledge, sunshade ledge, bay window, roof, terrace & void)

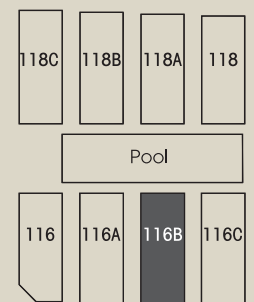
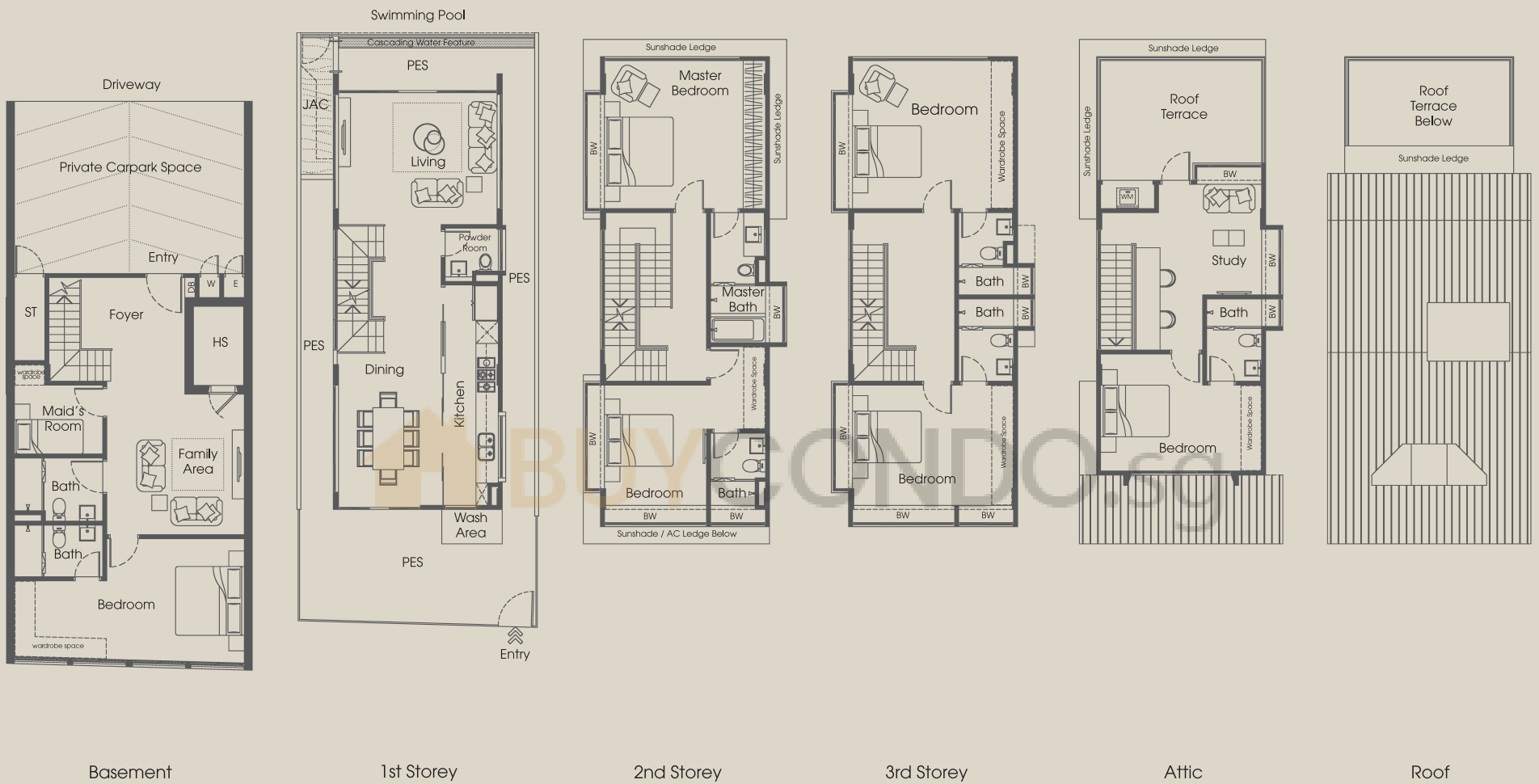


All plans are subject to amendments as approved by the relevant authorities. Floor areas are approximate measurements and subject to final survey.

# 116B Bukit Teresa Road

Area 7,567 sq ft / 703 sq m

(inclusive of private carpark, PES, A/C ledge, sunshade ledge, bay window, roof, terrace & void)

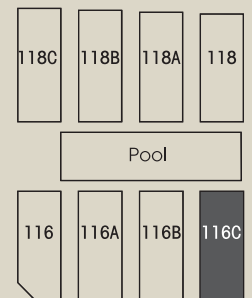
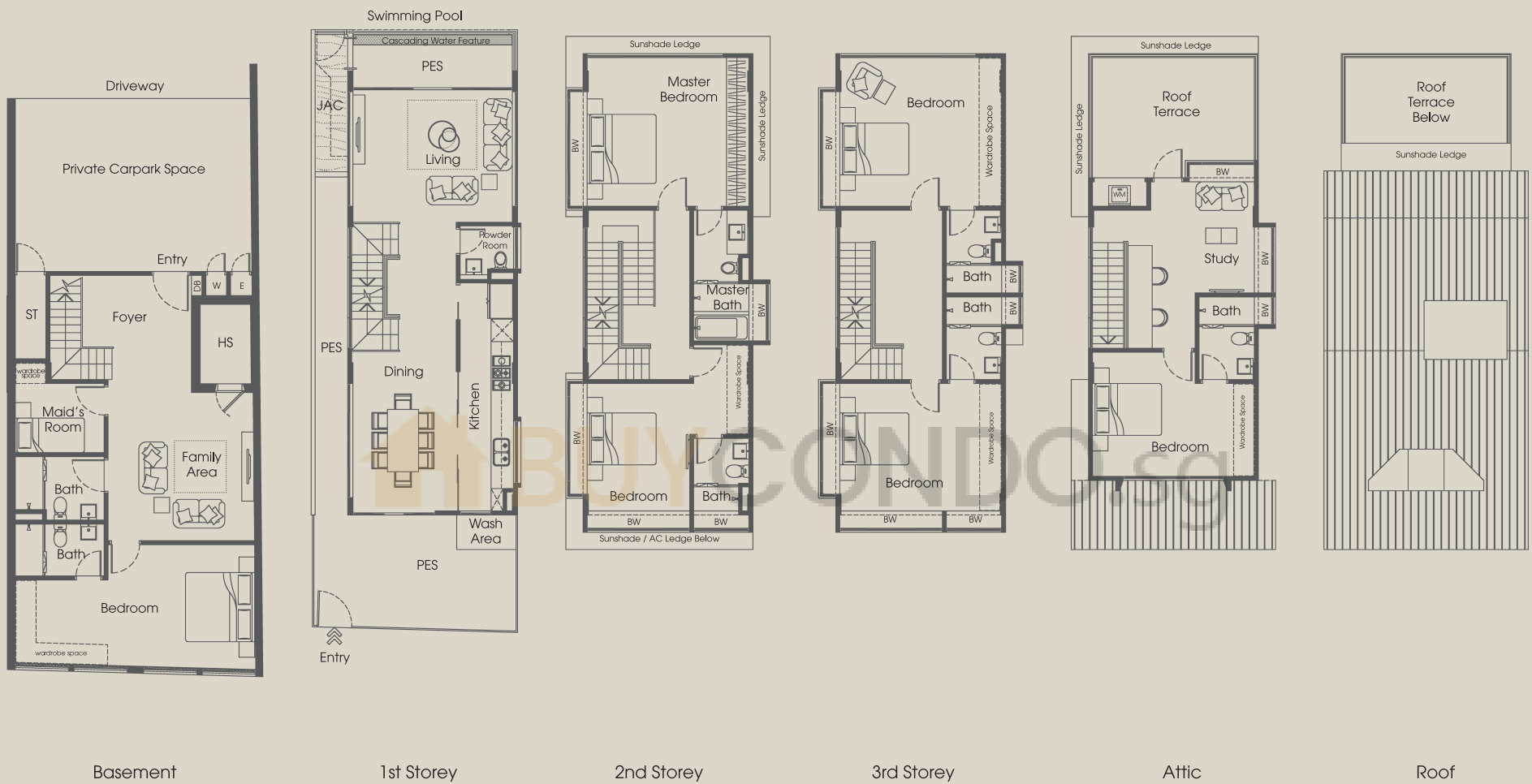


All plans are subject to amendments as approved by the relevant authorities. Floor areas are approximate measurements and subject to final survey.

# 116C Bukit Teresa Road

Area 7,050 sq ft / 655 sq m

(inclusive of private carpark, PES, A/C ledge, sunshade ledge, bay window, roof, terrace & void)



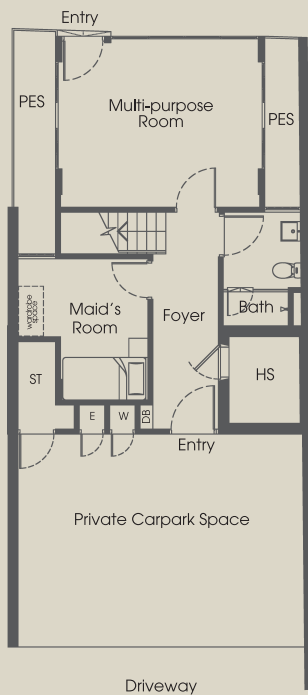
All plans are subject to amendments as approved by the relevant authorities. Floor areas are approximate measurements and subject to final survey.



# 118 Bukit Teresa Road

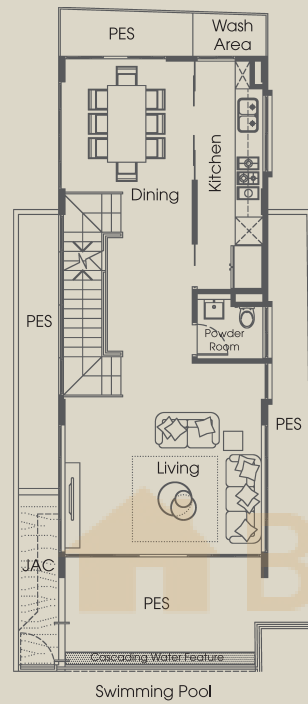
Area 5,565 sq ft / 517 sq m

(inclusive of private carpark, PES, A/C ledge, sunshade ledge, bay window, roof, terrace & void)



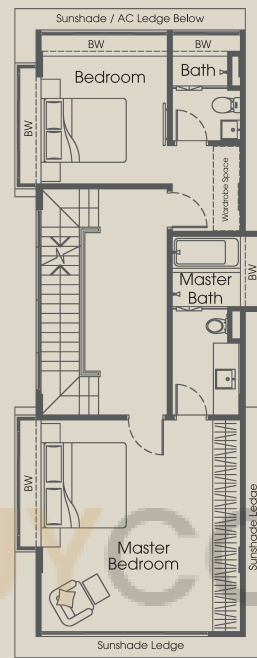
Driveway

1st Storey

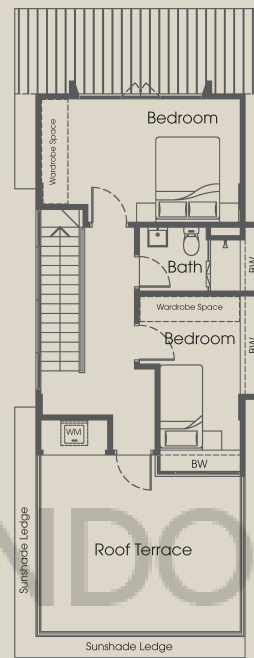


Swimming Pool

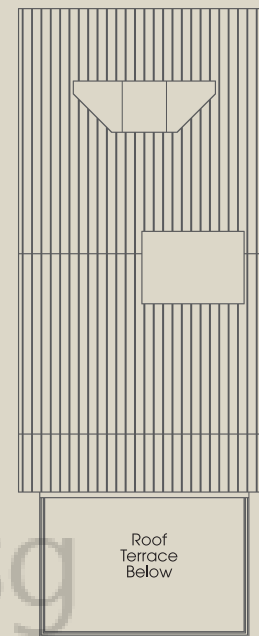
2nd Storey



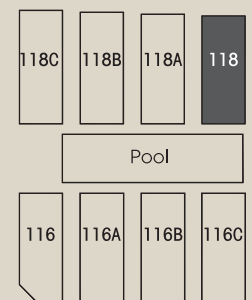
3rd Storey



Attic



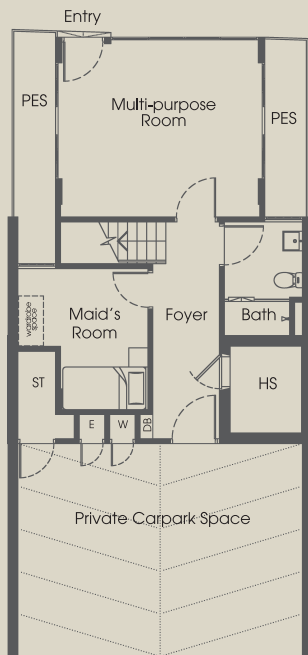
Roof



# 118A Bukit Teresa Road

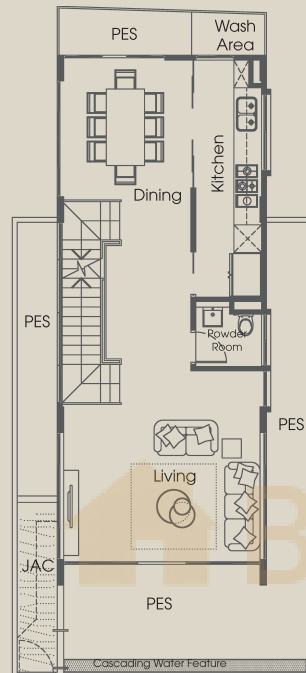
Area 5,683 sq ft / 528 sq m

(inclusive of private carpark, PES, A/C ledge, sunshade ledge, bay window, roof, terrace & void)



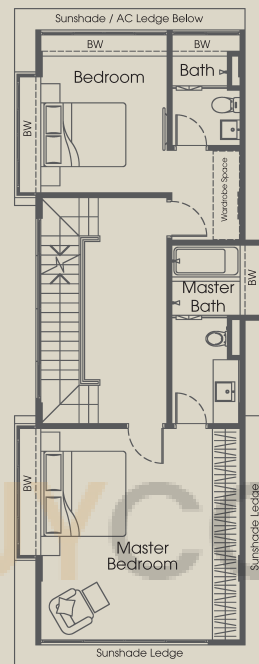
Driveway

1st Storey

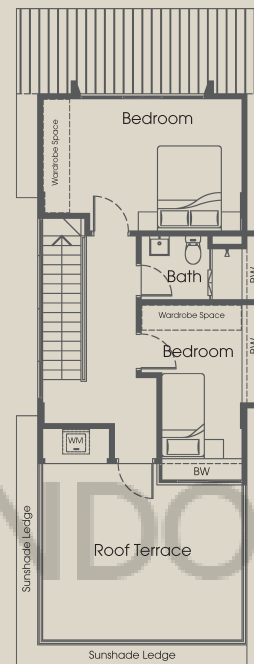


Swimming Pool

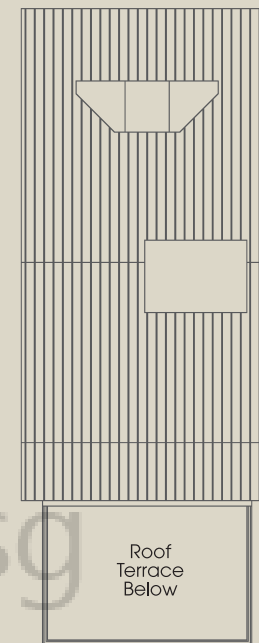
2nd Storey



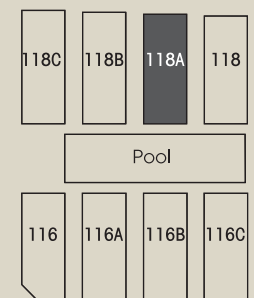
3rd Storey



Attic



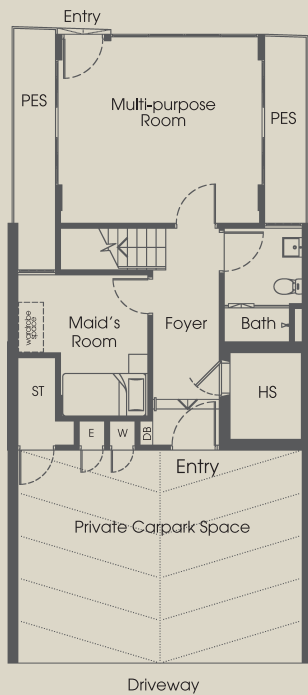
Roof



# 118B Bukit Teresa Road

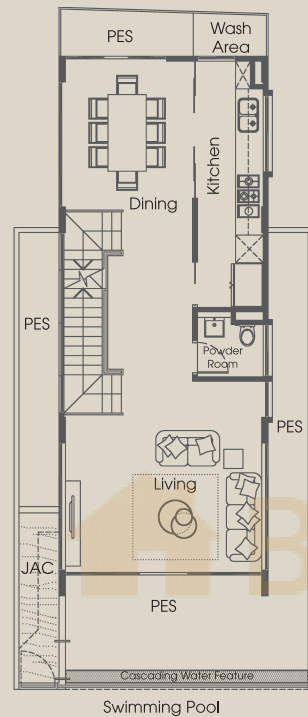
Area 5,737 sq ft / 533 sq m

(inclusive of private carpark, PES, A/C ledge, sunshade ledge, bay window, roof, terrace & void)



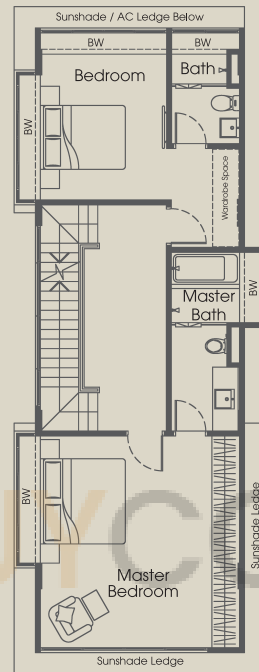
Driveway

1st Storey



Swimming Pool

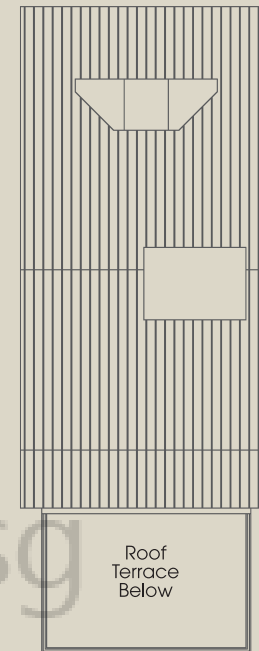
2nd Storey



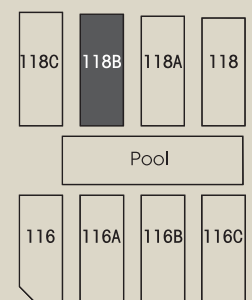
3rd Storey



Attic



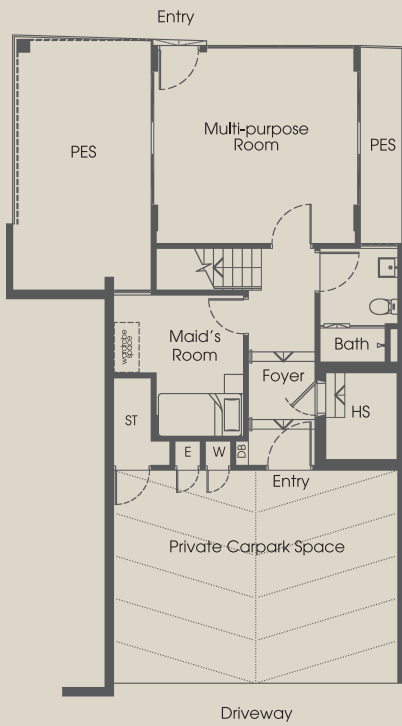
Roof



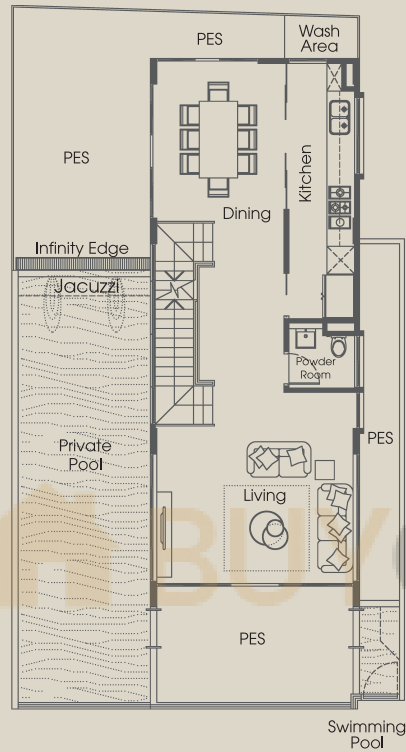
# 118C Bukit Teresa Road

Area 7,621 sq ft / 708 sq m

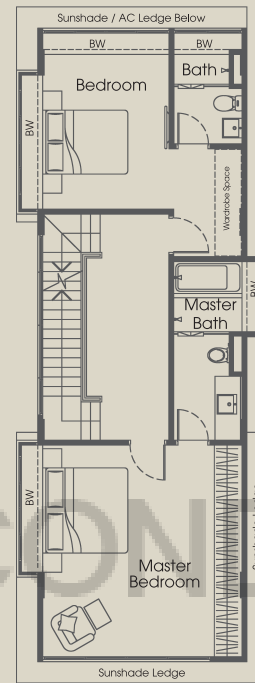
(inclusive of private carpark, PES, private pool, A/C ledge, sunshade ledge, bay window, roof, terrace & void)



1st Storey



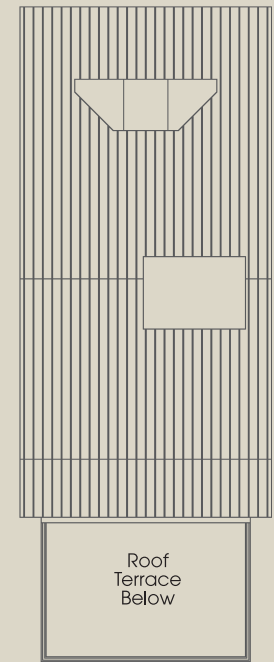
2nd Storey



3rd Storey



Attic



Roof

