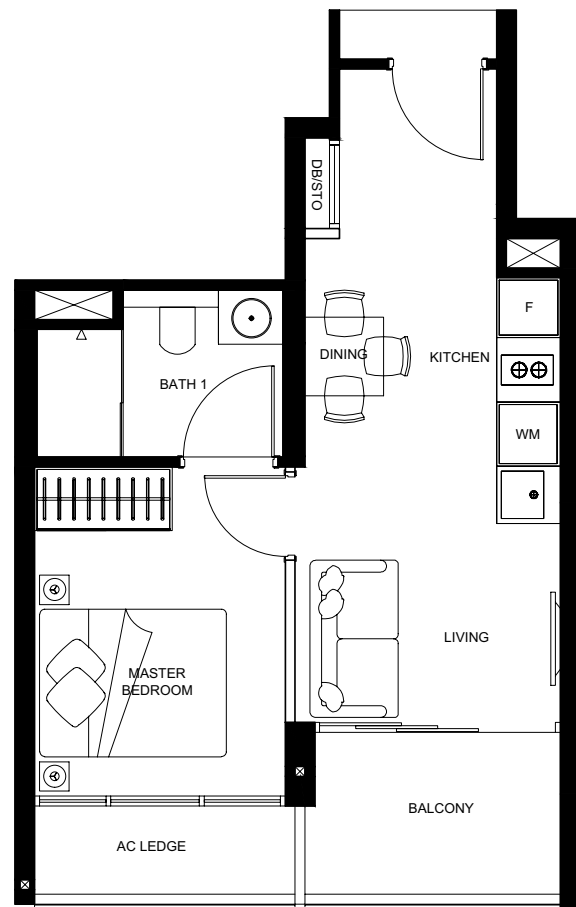


1-BEDROOM

TYPE A

#06-04 - #20-04

40M²

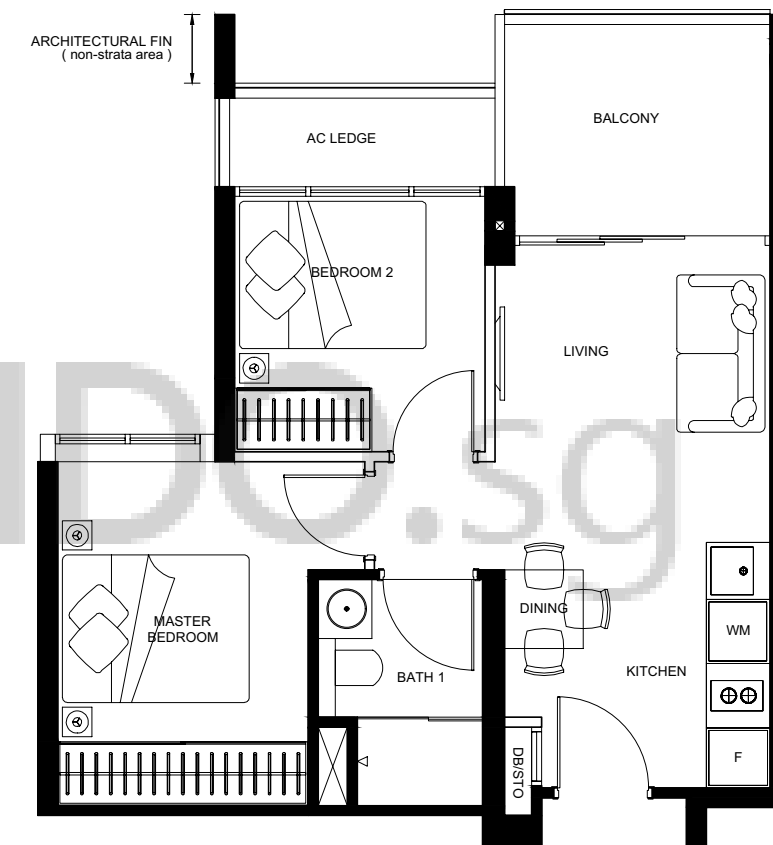


2-BEDROOM

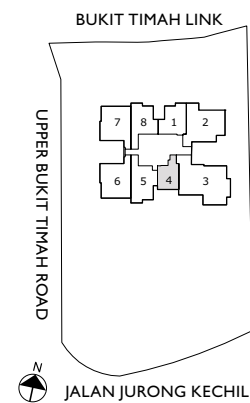
TYPE B1

#06-01 - #20-01

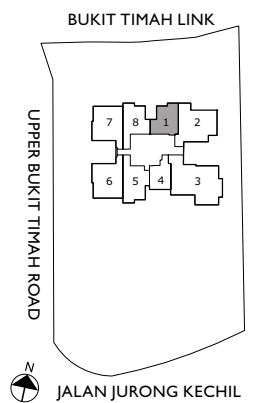
51M²



The above plans and illustrations are subject to changes as may be required and approved by the relevant authorities. Floor areas are approximate measurements and are subjected to final survey. The balcony shall not be enclosed unless with the approved screen. For an illustration of the approved balcony screen, please refer to the diagram annexed hereto as "annexure A".



The above plans and illustrations are subject to changes as may be required and approved by the relevant authorities. Floor areas are approximate measurements and are subjected to final survey. The balcony shall not be enclosed unless with the approved screen. For an illustration of the approved balcony screen, please refer to the diagram annexed hereto as "annexure A".

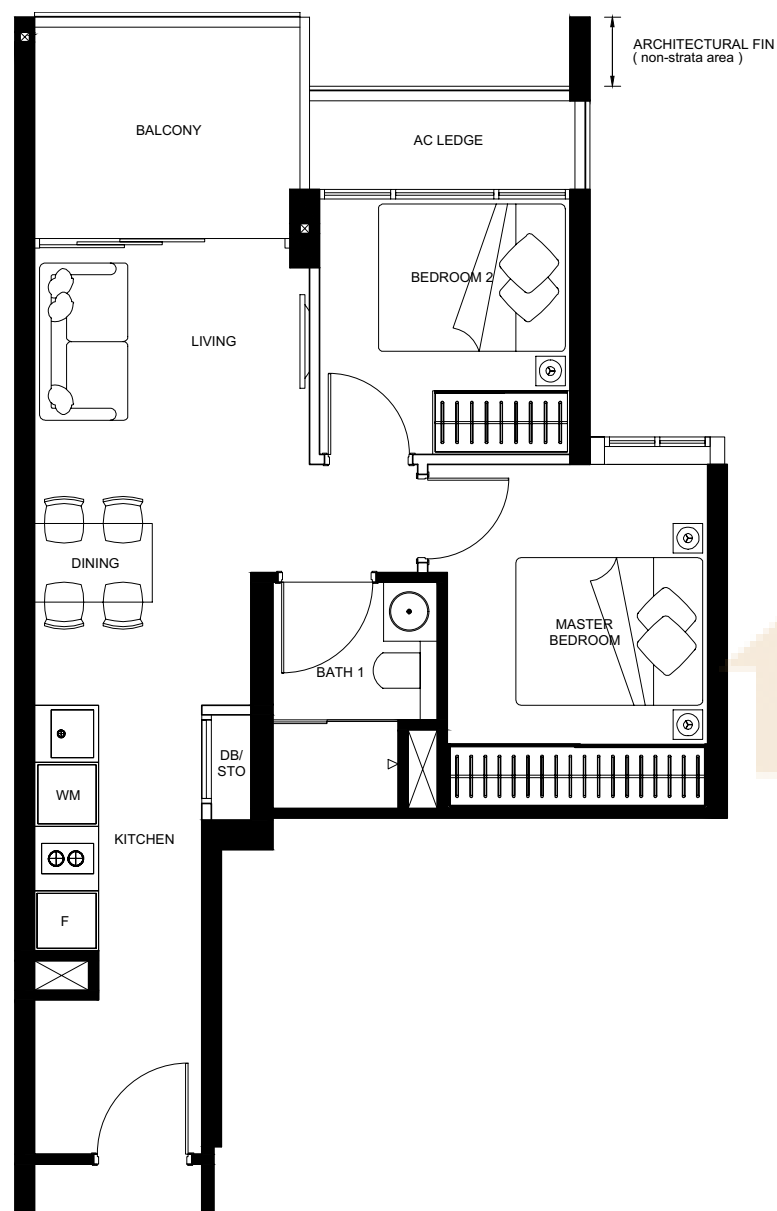


2 -BEDROOM

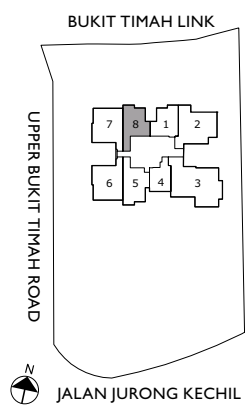
TYPE B2

#06-08 - #20-08

57M²



BUYCONDO.SG



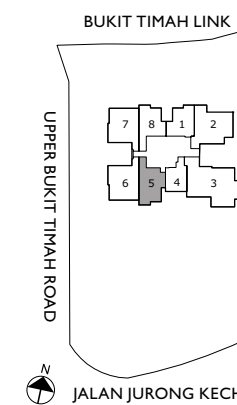
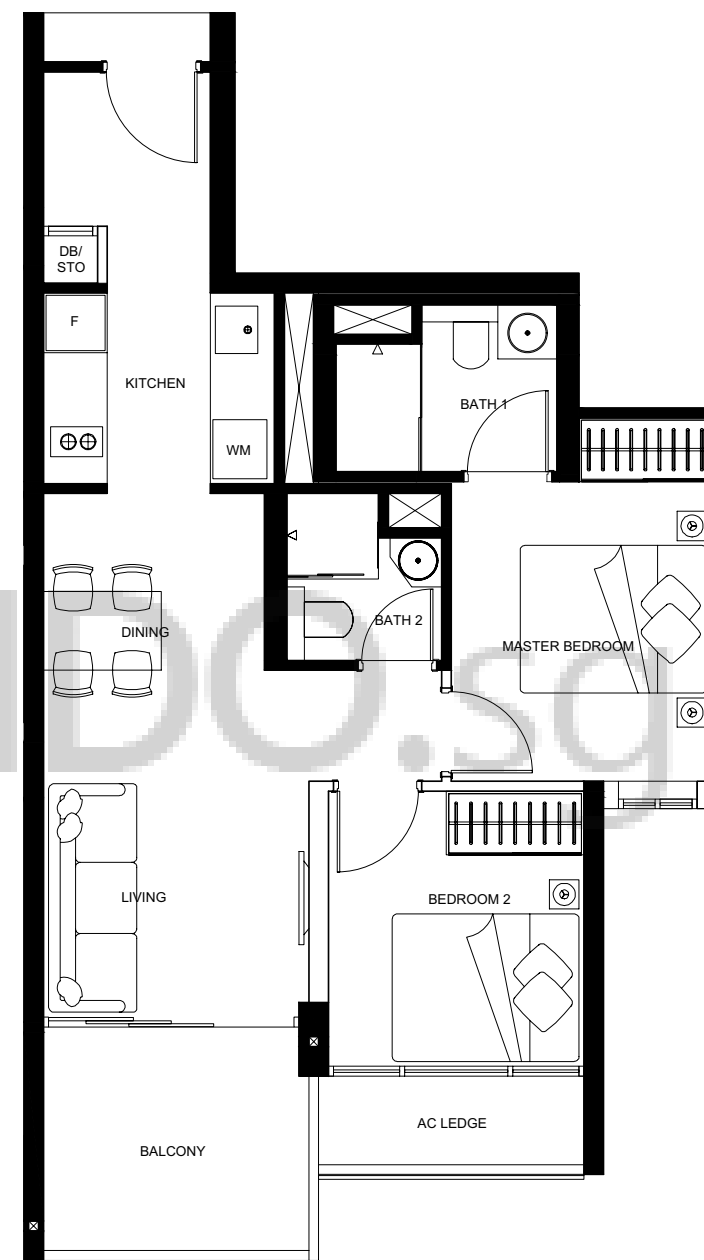
The above plans and illustrations are subject to changes as may be required and approved by the relevant authorities. Floor areas are approximate measurements and are subjected to final survey. The balcony shall not be enclosed unless with the approved screen. For an illustration of the approved balcony screen, please refer to the diagram annexed hereto as "annexure A".

2 PREMIUM -BEDROOM

TYPE B3

#06-05 - #20-05

62M²



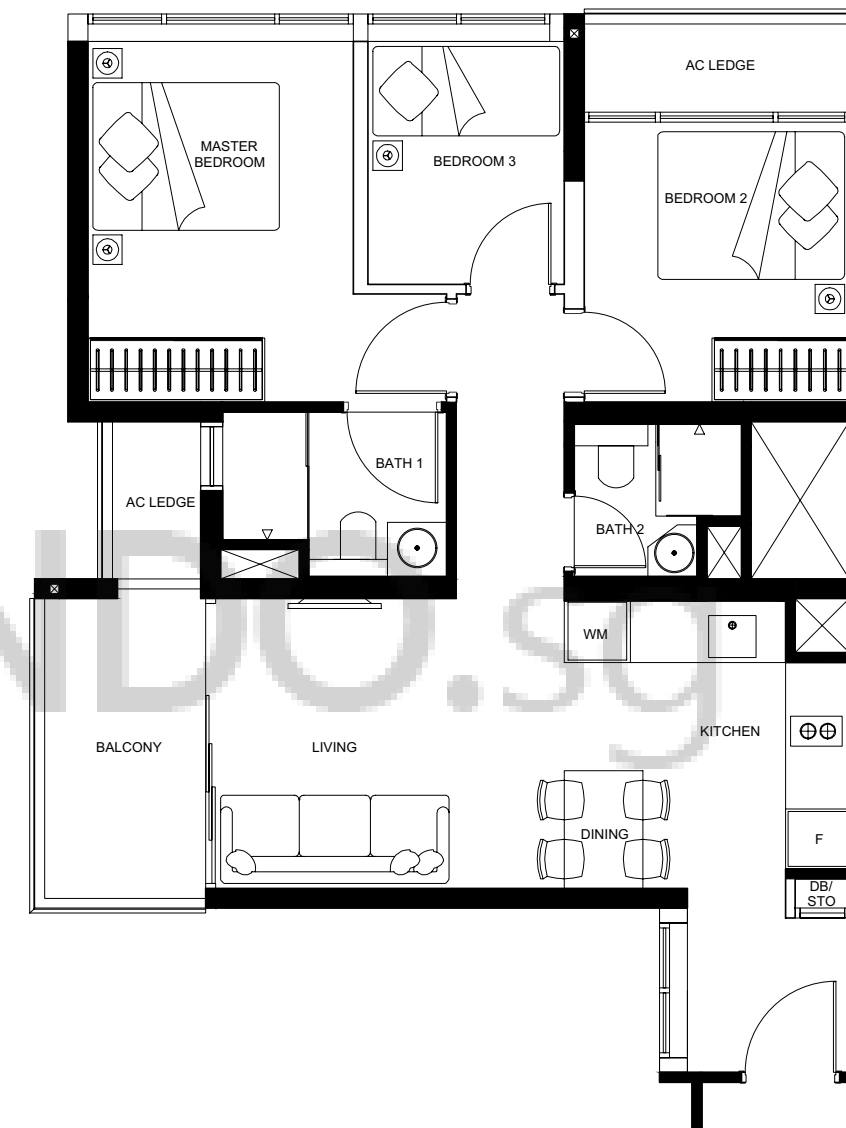
The above plans and illustrations are subject to changes as may be required and approved by the relevant authorities. Floor areas are approximate measurements and are subjected to final survey. The balcony shall not be enclosed unless with the approved screen. For an illustration of the approved balcony screen, please refer to the diagram annexed hereto as "annexure A".

3-BEDROOM

TYPE C1

#06-06 - #20-06

74M²



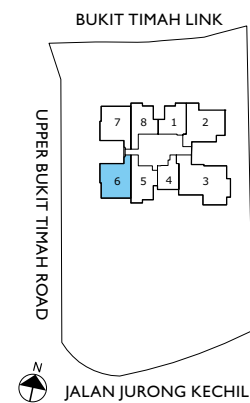
3-BEDROOM

TYPE C2

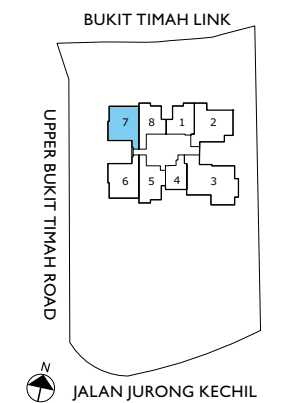
#06-07 - #20-07

74M²

The above plans and illustrations are subject to changes as may be required and approved by the relevant authorities. Floor areas are approximate measurements and are subjected to final survey. The balcony shall not be enclosed unless with the approved screen. For an illustration of the approved balcony screen, please refer to the diagram annexed hereto as "annexure A".



The above plans and illustrations are subject to changes as may be required and approved by the relevant authorities. Floor areas are approximate measurements and are subjected to final survey. The balcony shall not be enclosed unless with the approved screen. For an illustration of the approved balcony screen, please refer to the diagram annexed hereto as "annexure A".



THE BEDROOM

Luxury comes king-sized with a spacious walk-in wardrobe that provides premium privacy and freedom of space as you gear up for the day ahead, or wind down from it.

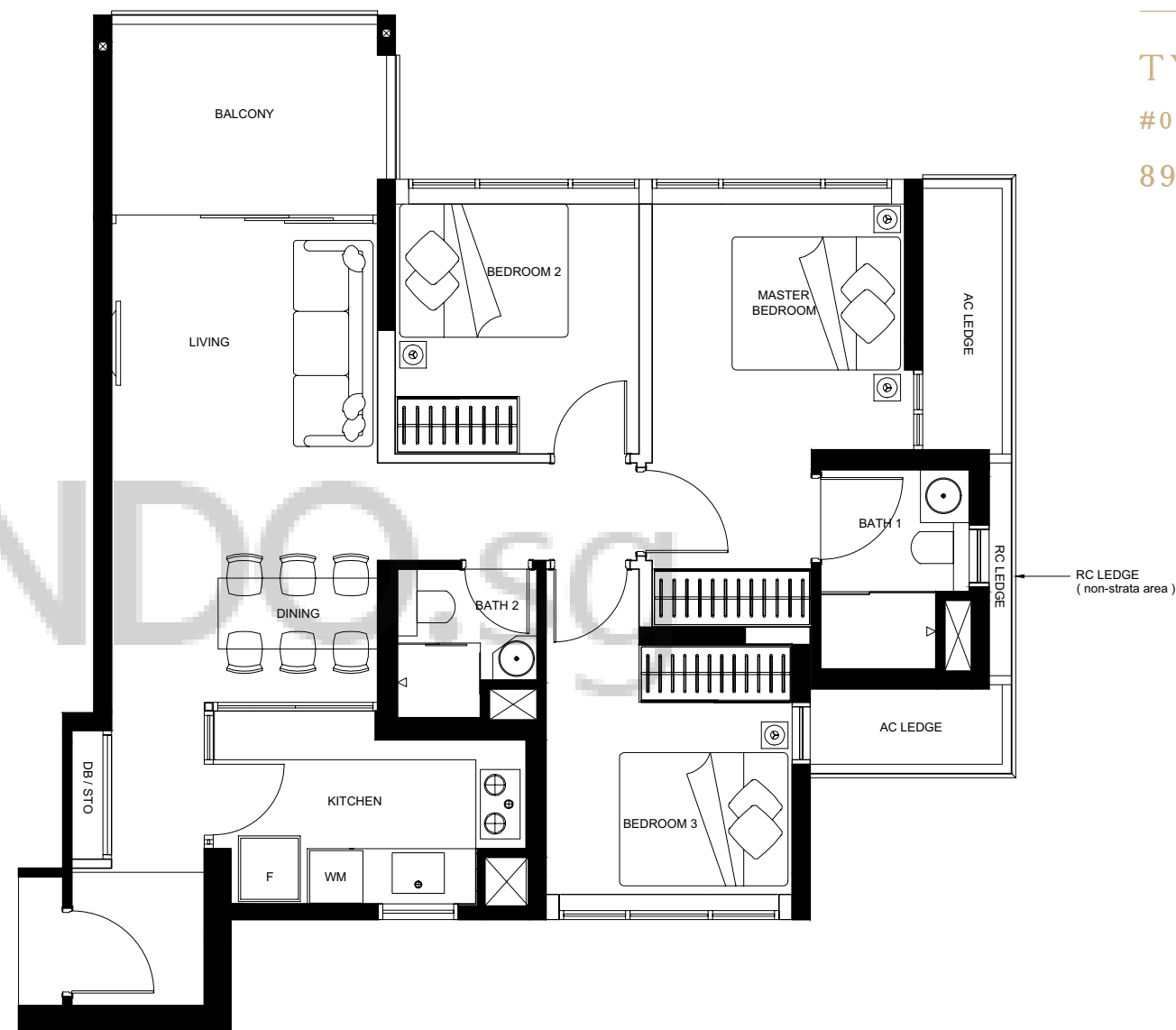


3 PREMIUM-BEDROOM

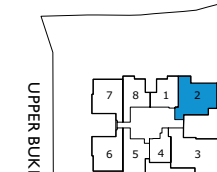
TYPE D

#06-02 - #20-02

89M²



BUKIT TIMAH LINK



UPPER BUKIT TIMAH ROAD



JALAN JURONG KECHIL

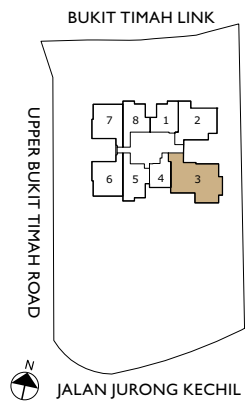
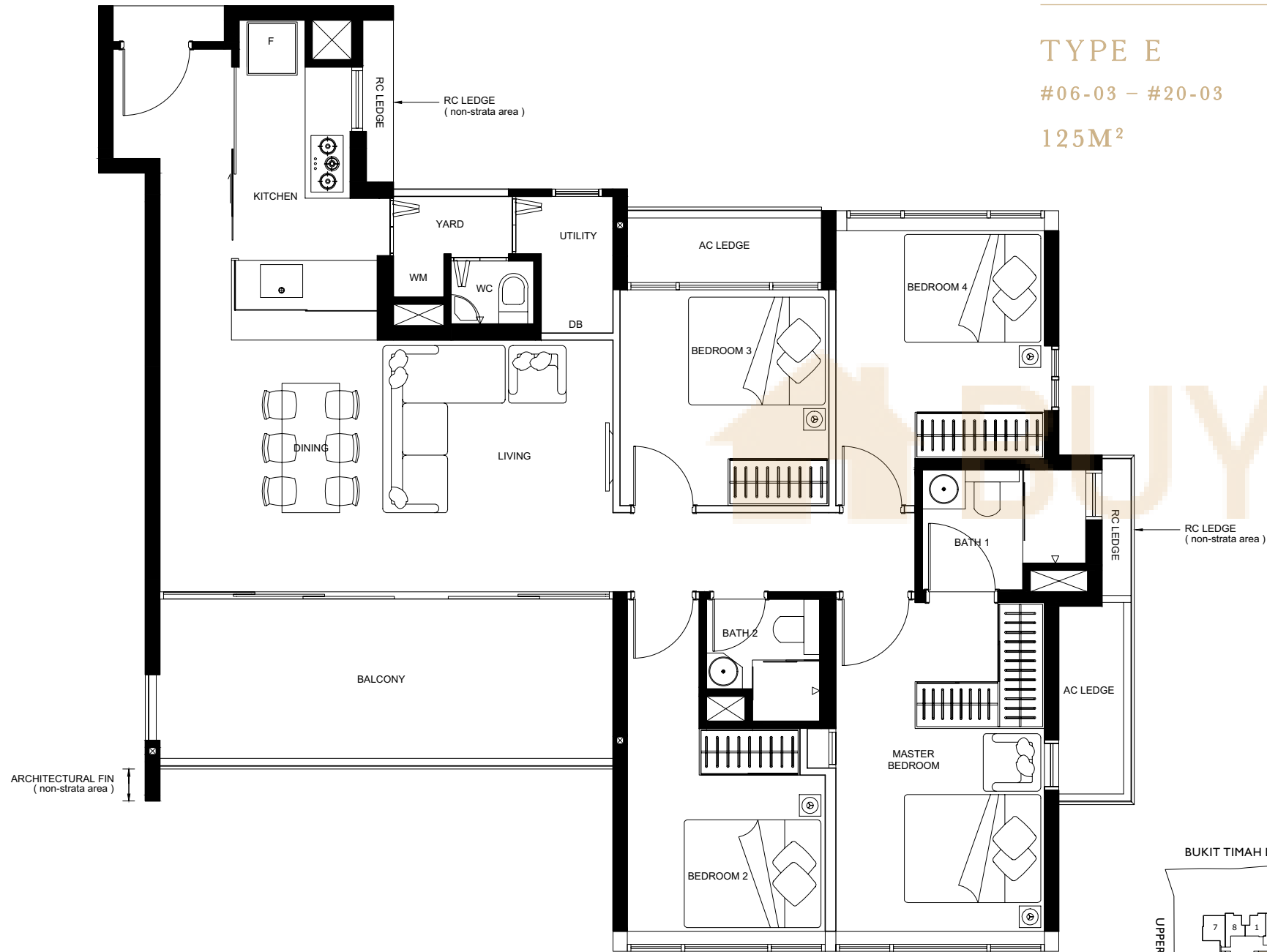
The above plans and illustrations are subject to changes as may be required and approved by the relevant authorities. Floor areas are approximate measurements and are subjected to final survey. The balcony shall not be enclosed unless with the approved screen. For an illustration of the approved balcony screen, please refer to the diagram annexed hereto as "annexure A".

4-BEDROOM

TYPE E

#06-03 - #20-03

125M²



The above plans and illustrations are subject to changes as may be required and approved by the relevant authorities. Floor areas are approximate measurements and are subjected to final survey. The balcony shall not be enclosed unless with the approved screen. For an illustration of the approved balcony screen, please refer to the diagram annexed hereto as "annexure A".



Artist's Impression

THE BATHROOM

Awash with impeccable fixtures and fittings, the most private of spaces now feels like it too – a soothing sanctuary where you can truly leave the world behind.

S

MART LIVING ON A SILVER PLATTER



Life can be so simple with a Smart Home System that understands your needs. With technology at your beck and call, you can unlock your front door via mobile app, enhance security with remote surveillance, and turn on the air-conditioning before you arrive home.



AIR-CON CONTROL



SMART GATEWAY WITH PT CAMERA



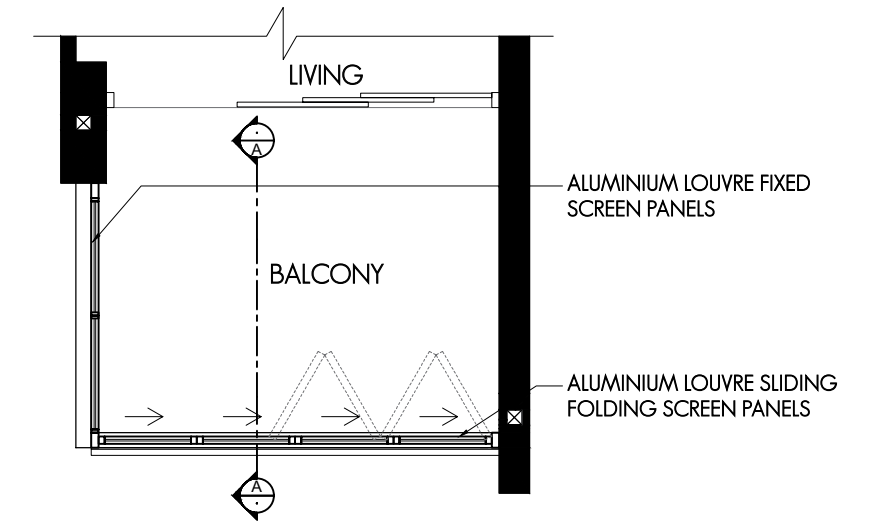
DIGITAL LOCKSET

B

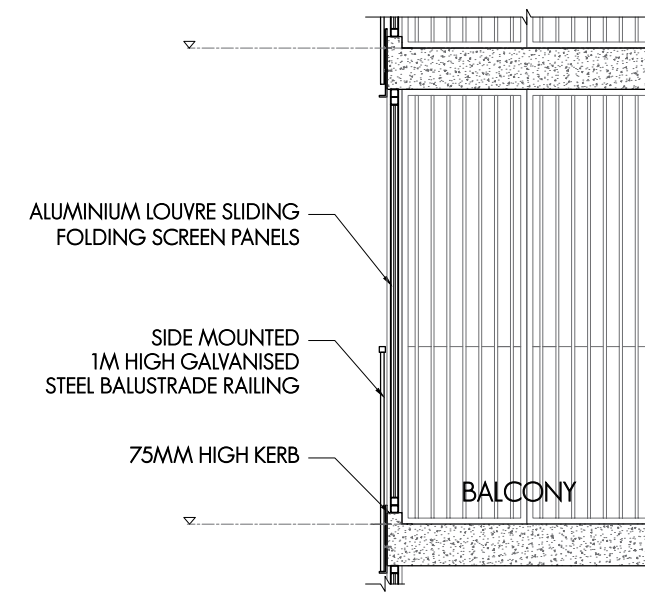
ALCONY SCREEN (ANNEXURE A)

NOTES:

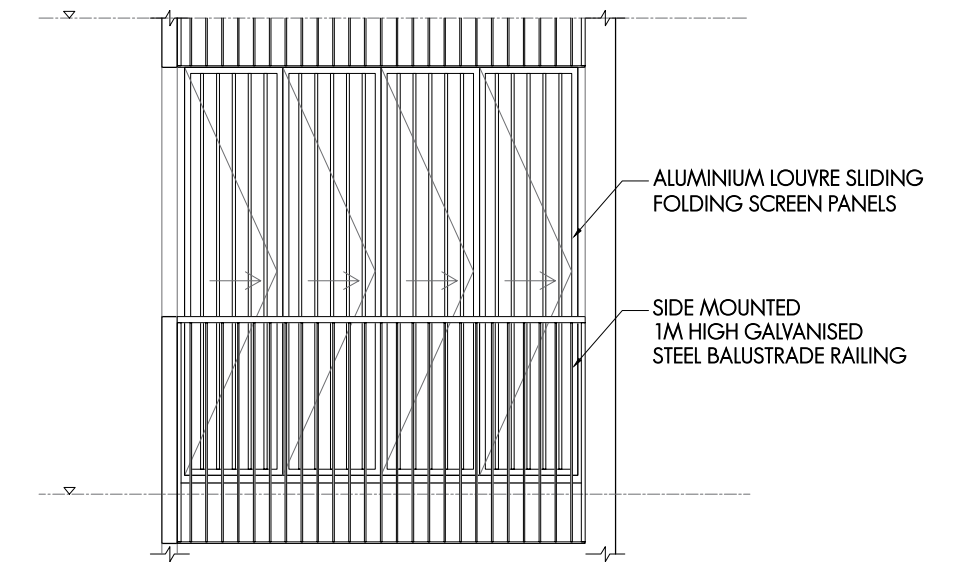
1. THE BALCONY SHALL NOT BE ENCLOSED UNLESS WITH THE APPROVED BALCONY SCREEN AS SHOWN ("APPROVED SCREEN");
2. BALCONY SCREEN IS NOT PROVIDED. THE COST OF SCREEN AND INSTALLATION OF THE APPROVED SCREEN SHALL BE BORNE BY THE PURCHASER;
3. ON-SITE VERIFICATION IS NECESSARY TO OBTAIN ACTUAL MEASUREMENTS PRIOR TO FABRICATION AND INSTALLATION OF THE APPROVED SCREEN.



TYPICAL PLAN OF BALCONY SCREEN



SECTION A-A



TYPICAL ELEVATION OF BALCONY SCREEN

REUYO ONDO.sg