

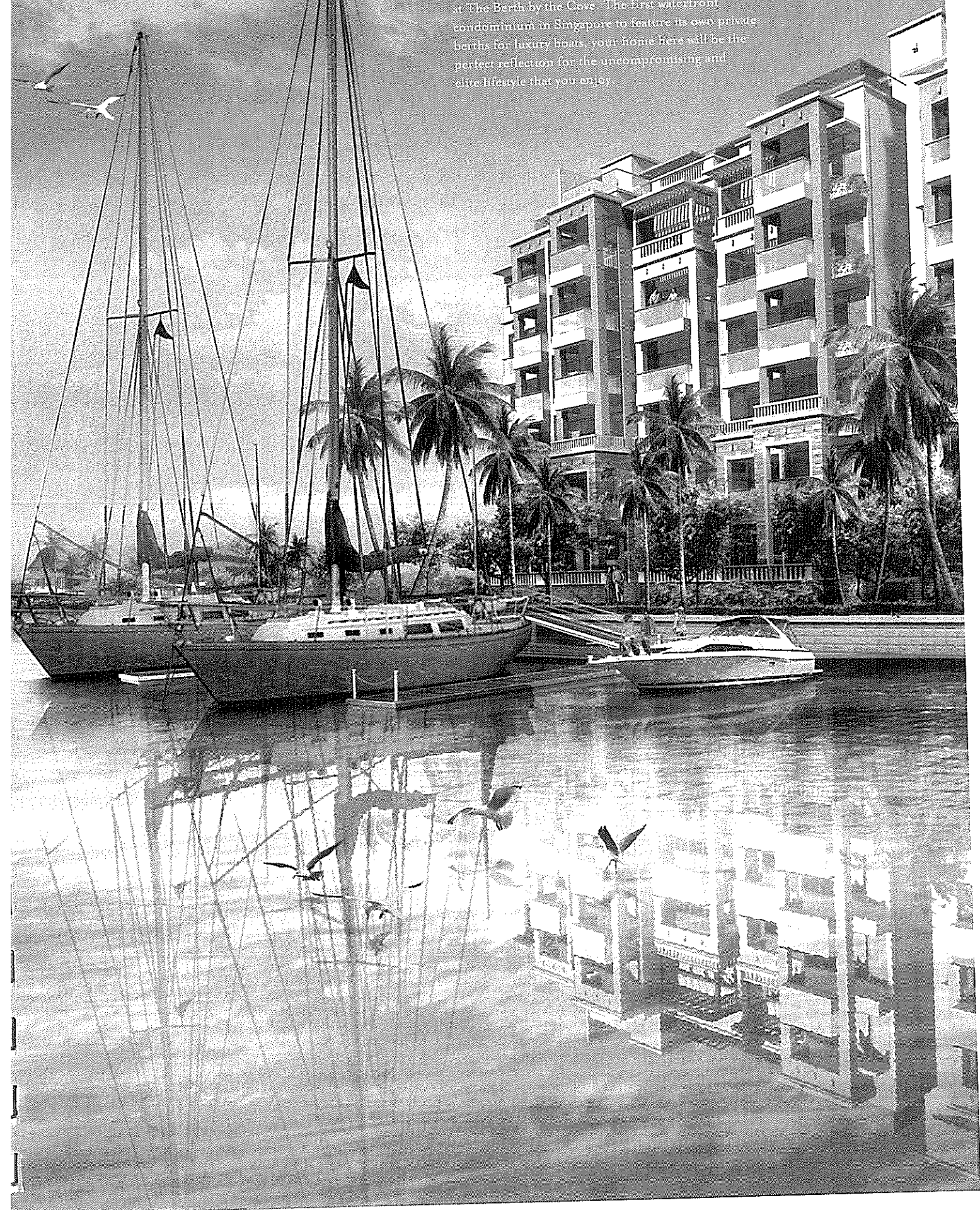
# THE BERTH

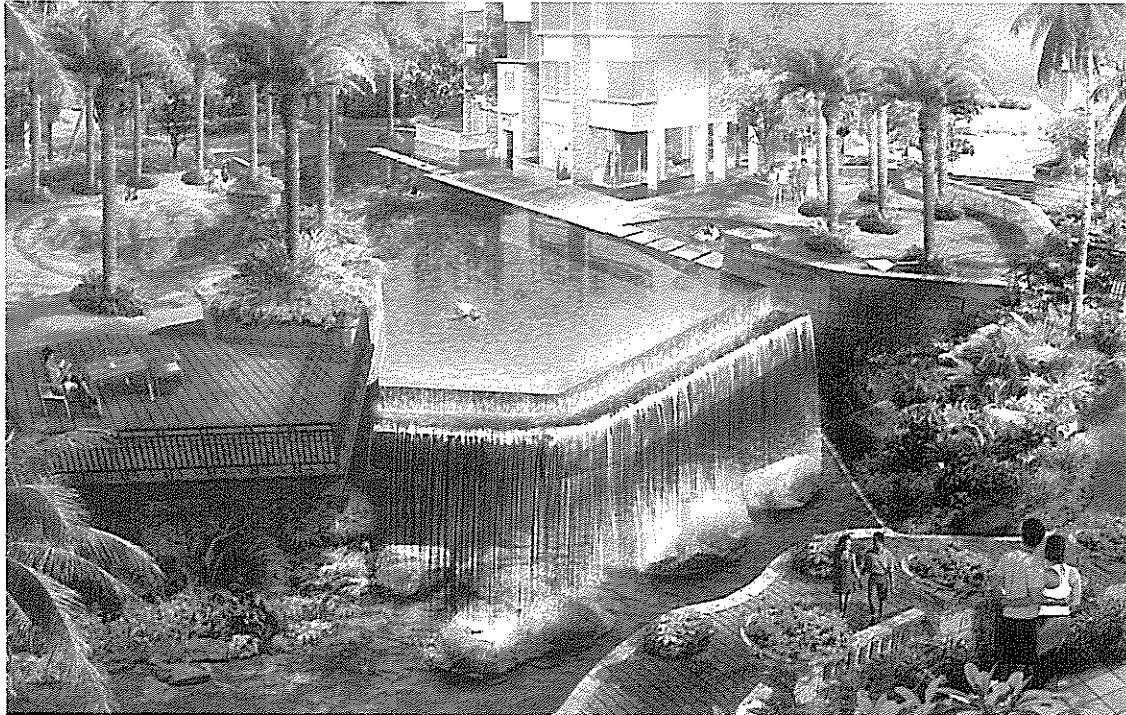
— BY THE COVE —

F L O O R P L A N S

## HOME | RESORT

A unique waterfront living concept is coming to life at The Berth by the Cove. The first waterfront condominium in Singapore to feature its own private berths for luxury boats, your home here will be the perfect reflection for the uncompromising and elite lifestyle that you enjoy.





A tranquil tropical living experience like no other



Comprehensive facilities meet meticulous landscaping



A range of diverse activities awaits you at the clubhouse

At The Berth by the Cove, your residence will be a mirror of not just an island hideaway but also the elite lifestyle you lead. Nestled in a pristine corner of the premier waterfront district of Sentosa Cove, your home will be infused with the ambience and setting of an upmarket tropical resort. Offering an integrated waterfront resort concept that blends residential, commercial and marina facilities, Sentosa Cove will offer a living experience without any precedent in Singapore. And The Berth will be the first luxury housing project to take full advantage of this unique new living concept.

Here, you can wake up to the caress of the gentle ocean breeze and

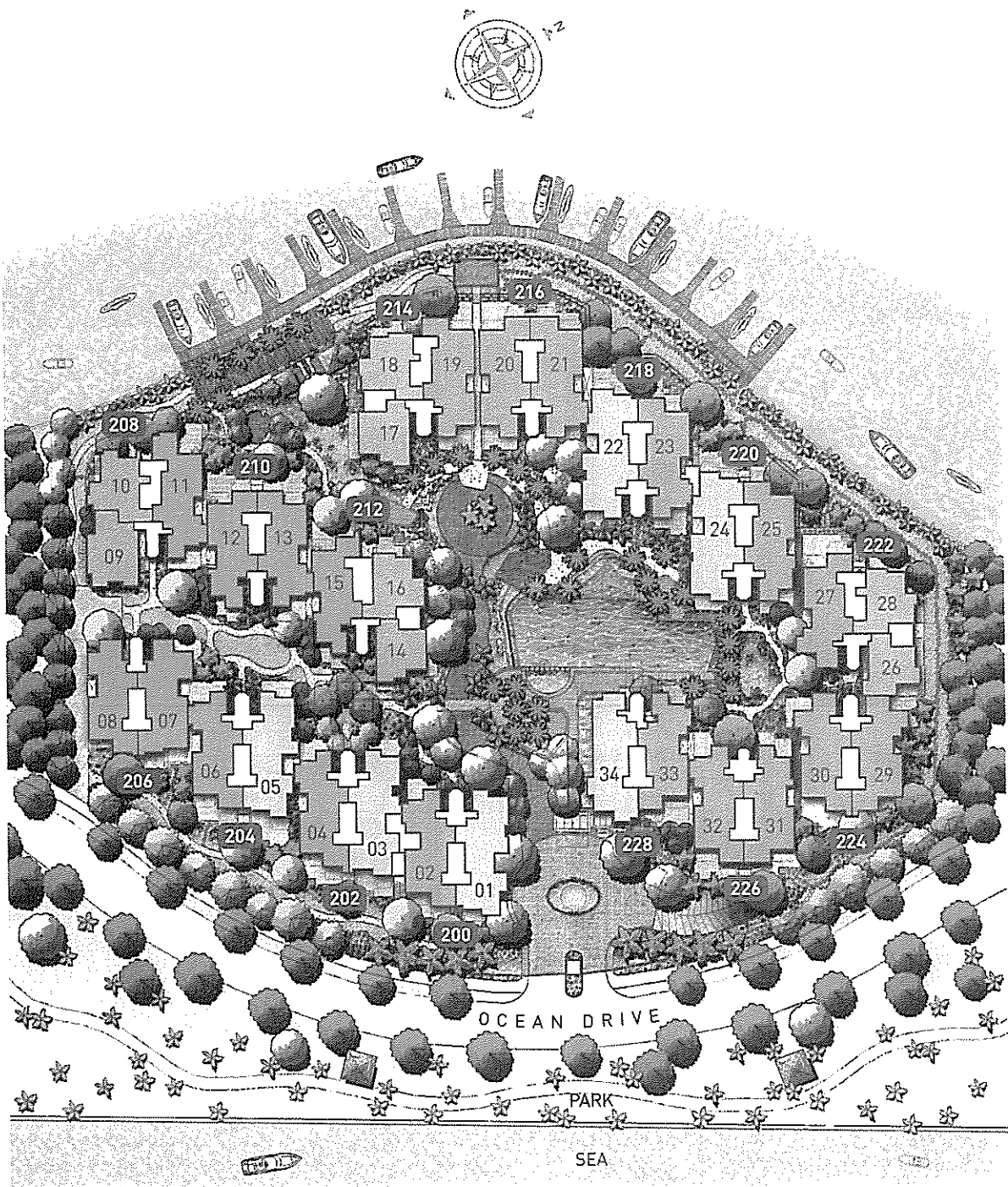
unobstructed views. Designed to put you in intimate contact with the elements, you can take your pick from 200 units that include a wide choice of 2, 3 and 4-bedroom apartments as well as luxury penthouses. Set amidst exquisite waterways and an unmatched natural environment, next to the undulating fairways of neighbouring golf courses, you'll feel as if you're staying in a private retreat - one to last a lifetime.

And why should exclusivity and privacy be incompatible with the comforts and conveniences of modern city living? Being a mere 10-minute drive from the city and with HarbourFront MRT station located within easy reach on the mainland, easy accessibility is assured.

What's more, the glittering new HarbourFront area, which will eventually be home to, among other amenities, VivoCity, the country's largest one-stop shopping and entertainment mega-complex, is also only a stone's throw away. And if you so desire, you could even set sail on a romantic cruise right from one of the private berths in the estate. In fact, you'll probably feel as if every minute spent at home is just like a luxurious getaway - an enriching, sensuous experience to cherish and behold. After all, you're used to vacationing at the top international island resorts. So why shouldn't your home reflect your love for the very best of resort living?



# SITE PLAN



TYPE A  
Two-bedroom units

TYPE B  
Three-bedroom units

TYPE C  
Four-bedroom units

# UNIT DISTRIBUTION CHARTS

## 200 OCEAN DRIVE

UNIT	01	02
STOREY		
Attic	<b>SKY VILLA</b> 560 sq.m. (6028 sq.ft.)	
#06		
#05	<b>TYPE C2c</b> 189 sq.m. (2034 sq.ft.)	<b>TYPE B1c</b> 154 sq.m. (1658 sq.ft.)
#04	<b>TYPE C2c</b> 175 sq.m. (1884 sq.ft.)	<b>TYPE B1c</b> 154 sq.m. (1658 sq.ft.)
#03	<b>TYPE C2b</b> 177 sq.m. (1905 sq.ft.)	<b>TYPE B1b</b> 155 sq.m. (1668 sq.ft.)
#02	<b>TYPE C2a</b> 177 sq.m. (1905 sq.ft.)	<b>TYPE B1a</b> 155 sq.m. (1668 sq.ft.)
#01	<b>TYPE C2p1</b> 195 sq.m. (2099 sq.ft.)	<b>TYPE B1p1</b> 187 sq.m. (2013 sq.ft.)

## 202 OCEAN DRIVE

UNIT	03	04
STOREY		
Attic	<b>TYPE P9</b> 310 sq.m. (3337 sq.ft.)	
#06		
#05	<b>TYPE C1c</b> 175 sq.m. (1884 sq.ft.)	<b>TYPE B1c</b> 154 sq.m. (1658 sq.ft.)
#04	<b>TYPE C1c</b> 175 sq.m. (1884 sq.ft.)	<b>TYPE B1c</b> 154 sq.m. (1658 sq.ft.)
#03	<b>TYPE C1b</b> 176 sq.m. (1894 sq.ft.)	<b>TYPE B1b</b> 155 sq.m. (1668 sq.ft.)
#02	<b>TYPE C1a</b> 176 sq.m. (1894 sq.ft.)	<b>TYPE B1a</b> 155 sq.m. (1668 sq.ft.)
#01	<b>TYPE C1p</b> 211 sq.m. (2271 sq.ft.)	<b>TYPE B1p2</b> 177 sq.m. (1905 sq.ft.)

## 204 OCEAN DRIVE

UNIT	05	06
STOREY		
Attic	<b>TYPE P11</b> 308 sq.m. (3315 sq.ft.)	
#06		
#05	<b>TYPE C3c</b> 174 sq.m. (1873 sq.ft.)	<b>TYPE B1c</b> 154 sq.m. (1658 sq.ft.)
#04	<b>TYPE C3c</b> 174 sq.m. (1873 sq.ft.)	<b>TYPE B1c</b> 154 sq.m. (1658 sq.ft.)
#03	<b>TYPE C3b</b> 175 sq.m. (1884 sq.ft.)	<b>TYPE B1b</b> 155 sq.m. (1668 sq.ft.)
#02	<b>TYPE C3a</b> 175 sq.m. (1884 sq.ft.)	<b>TYPE B1a</b> 155 sq.m. (1668 sq.ft.)
#01	<b>TYPE C2p2</b> 216 sq.m. (2325 sq.ft.)	<b>TYPE B1p3</b> 196 sq.m. (2099 sq.ft.)

## 206 OCEAN DRIVE

UNIT	07	08
STOREY		
Attic	<b>TYPE P3a</b> 286 sq.m. (3079 sq.ft.)	
#06		
#05	<b>TYPE B3</b> 153 sq.m. (1647 sq.ft.)	<b>TYPE B7</b> 149 sq.m. (1604 sq.ft.)
#04	<b>TYPE B3</b> 153 sq.m. (1647 sq.ft.)	<b>TYPE B7</b> 149 sq.m. (1604 sq.ft.)
#03	<b>TYPE B3</b> 153 sq.m. (1647 sq.ft.)	<b>TYPE B7</b> 149 sq.m. (1604 sq.ft.)
#02	<b>TYPE B3</b> 153 sq.m. (1647 sq.ft.)	<b>TYPE B7</b> 149 sq.m. (1604 sq.ft.)
#01	<b>TYPE B3p1</b> 183 sq.m. (1970 sq.ft.)	<b>TYPE B7p</b> 153 sq.m. (1647 sq.ft.)

## 208 OCEAN DRIVE

UNIT	09	10	11
STOREY			
Attic	<b>TYPE P8</b> 273 sq.m. (2939 sq.ft.)		<b>TYPE P2</b> 284 sq.m. (3057 sq.ft.)
#06			
#05	<b>TYPE A3b</b> 98 sq.m. (1055 sq.ft.)	<b>TYPE A1c</b> 109 sq.m. (1173 sq.ft.)	<b>TYPE B2c</b> 152 sq.m. (1636 sq.ft.)
#04	<b>TYPE A3b</b> 98 sq.m. (1055 sq.ft.)	<b>TYPE A1c</b> 109 sq.m. (1173 sq.ft.)	<b>TYPE B2c</b> 152 sq.m. (1636 sq.ft.)
#03	<b>TYPE A3b</b> 98 sq.m. (1055 sq.ft.)	<b>TYPE A1b</b> 110 sq.m. (1184 sq.ft.)	<b>TYPE B2b</b> 153 sq.m. (1647 sq.ft.)
#02	<b>TYPE A3a</b> 94 sq.m. (1012 sq.ft.)	<b>TYPE A1a</b> 110 sq.m. (1184 sq.ft.)	<b>TYPE B2a</b> 153 sq.m. (1647 sq.ft.)
#01		<b>TYPE A1p1</b> 120 sq.m. (1292 sq.ft.)	<b>TYPE B2p</b> 187 sq.m. (2013 sq.ft.)

## 210 OCEAN DRIVE

UNIT	12	13
STOREY		
Attic	<b>TYPE P5</b> 281 sq.m. (3025 sq.ft.)	
#06		
#05	<b>TYPE B5c</b> 150 sq.m. (1615 sq.ft.)	<b>TYPE B1c</b> 154 sq.m. (1658 sq.ft.)
#04	<b>TYPE B5c</b> 150 sq.m. (1615 sq.ft.)	<b>TYPE B1c</b> 154 sq.m. (1658 sq.ft.)
#03	<b>TYPE B5b</b> 151 sq.m. (1625 sq.ft.)	<b>TYPE B1b</b> 155 sq.m. (1668 sq.ft.)
#02	<b>TYPE B5a</b> 151 sq.m. (1625 sq.ft.)	<b>TYPE B1a</b> 155 sq.m. (1668 sq.ft.)
#01	<b>TYPE B5p1</b> 192 sq.m. (2067 sq.ft.)	<b>TYPE B1p4</b> 198 sq.m. (2131 sq.ft.)

## 212 OCEAN DRIVE

UNIT	14	15	16
STOREY			
Attic	<b>TYPE P6</b> 278 sq.m. (2992 sq.ft.)		<b>TYPE P8</b> 273 sq.m. (2939 sq.ft.)
#06			
#05	<b>TYPE A4c</b> 106 sq.m. (1141 sq.ft.)	<b>TYPE B6c</b> 149 sq.m. (1604 sq.ft.)	<b>TYPE A1c</b> 109 sq.m. (1173 sq.ft.)
#04	<b>TYPE A4c</b> 106 sq.m. (1141 sq.ft.)	<b>TYPE B6c</b> 149 sq.m. (1604 sq.ft.)	<b>TYPE A1c</b> 109 sq.m. (1173 sq.ft.)
#03	<b>TYPE A4b</b> 107 sq.m. (1152 sq.ft.)	<b>TYPE B6b</b> 150 sq.m. (1615 sq.ft.)	<b>TYPE A1b</b> 110 sq.m. (1184 sq.ft.)
#02	<b>TYPE A4a</b> 107 sq.m. (1152 sq.ft.)	<b>TYPE B6a</b> 150 sq.m. (1615 sq.ft.)	<b>TYPE A1a</b> 110 sq.m. (1184 sq.ft.)
#01	<b>TYPE A4p</b> 110 sq.m. (1184 sq.ft.)	<b>TYPE B6p1</b> 188 sq.m. (2024 sq.ft.)	<b>TYPE A1p2</b> 121 sq.m. (1302 sq.ft.)

## 214 OCEAN DRIVE

UNIT	17	18	19
STOREY			
Attic	<b>TYPE P8</b> 273 sq.m. (2939 sq.ft.)		<b>TYPE P2</b> 284 sq.m. (3057 sq.ft.)
#06			
#05	<b>TYPE A4c</b> 106 sq.m. (1141 sq.ft.)	<b>TYPE A1c</b> 109 sq.m. (1173 sq.ft.)	<b>TYPE B2c</b> 152 sq.m. (1636 sq.ft.)
#04	<b>TYPE A4c</b> 106 sq.m. (1141 sq.ft.)	<b>TYPE A1c</b> 109 sq.m. (1173 sq.ft.)	<b>TYPE B2c</b> 152 sq.m. (1636 sq.ft.)
#03	<b>TYPE A4b</b> 107 sq.m. (1152 sq.ft.)	<b>TYPE A1b</b> 110 sq.m. (1184 sq.ft.)	<b>TYPE B2b</b> 153 sq.m. (1647 sq.ft.)
#02	<b>TYPE A4a</b> 107 sq.m. (1152 sq.ft.)	<b>TYPE A1a</b> 110 sq.m. (1184 sq.ft.)	<b>TYPE B2a</b> 153 sq.m. (1647 sq.ft.)
#01	<b>TYPE A4p</b> 110 sq.m. (1184 sq.ft.)	<b>TYPE A1p3</b> 118 sq.m. (1270 sq.ft.)	<b>TYPE B6p2</b> 190 sq.m. (2045 sq.ft.)

2 bedroom  
#1906 psp.  
3 bedroom  
#1800 psp.

## UNIT DISTRIBUTION CHARTS

### 216 OCEAN DRIVE

UNIT STOREY	20	21
Attic		
#06	TYPE P1 287 sq.m. (3089 sq.ft.)	TYPE P1 287 sq.m. (3089 sq.ft.)
#05	TYPE B1c 154 sq.m. (1658 sq.ft.)	TYPE B1c 154 sq.m. (1658 sq.ft.)
#04	TYPE B1c 154 sq.m. (1658 sq.ft.)	TYPE B1c 154 sq.m. (1658 sq.ft.)
#03	TYPE B1b 155 sq.m. (1668 sq.ft.)	TYPE B1b 155 sq.m. (1668 sq.ft.)
#02	TYPE B5a 151 sq.m. (1625 sq.ft.)	TYPE B1a 155 sq.m. (1668 sq.ft.)
#01	TYPE B5p2 191 sq.m. (2054 sq.ft.)	TYPE B1p5 184 sq.m. (1992 sq.ft.)

### 218 OCEAN DRIVE

UNIT STOREY	22	23
Attic		
#06	TYPE P10 313 sq.m. (3369 sq.ft.)	TYPE P1 287 sq.m. (3089 sq.ft.)
#05	TYPE C2c 175 sq.m. (1884 sq.ft.)	TYPE B1c 154 sq.m. (1658 sq.ft.)
#04	TYPE C2c 175 sq.m. (1884 sq.ft.)	TYPE B1c 154 sq.m. (1658 sq.ft.)
#03	TYPE C2b 177 sq.m. (1905 sq.ft.)	TYPE B1b 155 sq.m. (1668 sq.ft.)
#02	TYPE C2a 177 sq.m. (1905 sq.ft.)	TYPE B1a 155 sq.m. (1668 sq.ft.)
#01	TYPE C2p3 207 sq.m. (2228 sq.ft.)	TYPE B1p6 191 sq.m. (2054 sq.ft.)

### 220 OCEAN DRIVE

UNIT STOREY	24	25
Attic		
#06	TYPE P10 313 sq.m. (3369 sq.ft.)	TYPE P1 287 sq.m. (3089 sq.ft.)
#05	TYPE C2c 175 sq.m. (1884 sq.ft.)	TYPE B1c 154 sq.m. (1658 sq.ft.)
#04	TYPE C2c 175 sq.m. (1884 sq.ft.)	TYPE B1c 154 sq.m. (1658 sq.ft.)
#03	TYPE C2b 177 sq.m. (1905 sq.ft.)	TYPE B1b 155 sq.m. (1668 sq.ft.)
#02	TYPE C2a 177 sq.m. (1905 sq.ft.)	TYPE B5a 151 sq.m. (1625 sq.ft.)
#01	TYPE C2p3 207 sq.m. (2228 sq.ft.)	TYPE B5p3 175 sq.m. (1884 sq.ft.)

### 222 OCEAN DRIVE

UNIT STOREY	26	27	28
Attic			
#06	TYPE A2 193 sq.m. (2083 sq.ft.)	TYPE P4 283 sq.m. (3046 sq.ft.)	TYPE P8 273 sq.m. (2939 sq.ft.)
#05	TYPE A2 100 sq.m. (1074 sq.ft.)	TYPE B4 151 sq.m. (1625 sq.ft.)	TYPE A1c 107 sq.m. (1152 sq.ft.)
#04	TYPE A2 100 sq.m. (1074 sq.ft.)	TYPE B4 151 sq.m. (1625 sq.ft.)	TYPE A1c 107 sq.m. (1152 sq.ft.)
#03	TYPE A2 100 sq.m. (1074 sq.ft.)	TYPE B4 151 sq.m. (1625 sq.ft.)	TYPE A1c 107 sq.m. (1152 sq.ft.)
#02	TYPE A2 100 sq.m. (1074 sq.ft.)	TYPE B4 151 sq.m. (1625 sq.ft.)	TYPE A1c 107 sq.m. (1152 sq.ft.)
#01	TYPE A2p 107 sq.m. (1152 sq.ft.)	TYPE B4p 190 sq.m. (2045 sq.ft.)	TYPE A1p4 120 sq.m. (1292 sq.ft.)

### 224 OCEAN DRIVE

UNIT STOREY	29	30
Attic		
#06	TYPE P3b 287 sq.m. (3089 sq.ft.)	TYPE P3b 287 sq.m. (3089 sq.ft.)
#05	TYPE B3 153 sq.m. (1647 sq.ft.)	TYPE B3 153 sq.m. (1647 sq.ft.)
#04	TYPE B3 153 sq.m. (1647 sq.ft.)	TYPE B3 153 sq.m. (1647 sq.ft.)
#03	TYPE B3 153 sq.m. (1647 sq.ft.)	TYPE B3 153 sq.m. (1647 sq.ft.)
#02	TYPE B3 153 sq.m. (1647 sq.ft.)	TYPE B3 153 sq.m. (1647 sq.ft.)
#01	TYPE B3p2 170 sq.m. (1830 sq.ft.)	TYPE B3p3 184 sq.m. (1992 sq.ft.)

### 226 OCEAN DRIVE

UNIT STOREY	31	32
Attic		
#06	TYPE P1 287 sq.m. (3089 sq.ft.)	TYPE P1 287 sq.m. (3089 sq.ft.)
#05	TYPE B1c 154 sq.m. (1658 sq.ft.)	TYPE B1c 154 sq.m. (1658 sq.ft.)
#04	TYPE B1c 154 sq.m. (1658 sq.ft.)	TYPE B1c 154 sq.m. (1658 sq.ft.)
#03	TYPE B1b 155 sq.m. (1668 sq.ft.)	TYPE B1b 155 sq.m. (1668 sq.ft.)
#02	TYPE B5a 151 sq.m. (1625 sq.ft.)	TYPE B1a 155 sq.m. (1668 sq.ft.)
#01	TYPE B5p4 185 sq.m. (1992 sq.ft.)	TYPE B1p7 170 sq.m. (1830 sq.ft.)

### 228 OCEAN DRIVE

UNIT STOREY	33	34
Attic		
#06	SKY VILLA 560 sq.m. (6028 sq.ft.)	
#05	TYPE B1c 154 sq.m. (1658 sq.ft.)	TYPE C2c 169 sq.m. (1834 sq.ft.)
#04	TYPE B1c 154 sq.m. (1658 sq.ft.)	TYPE C2c 175 sq.m. (1884 sq.ft.)
#03	TYPE B1b 155 sq.m. (1668 sq.ft.)	TYPE C2b 177 sq.m. (1905 sq.ft.)
#02	TYPE B1a 155 sq.m. (1668 sq.ft.)	TYPE C2a 177 sq.m. (1905 sq.ft.)
#01	TYPE B1p8 192 sq.m. (2067 sq.ft.)	

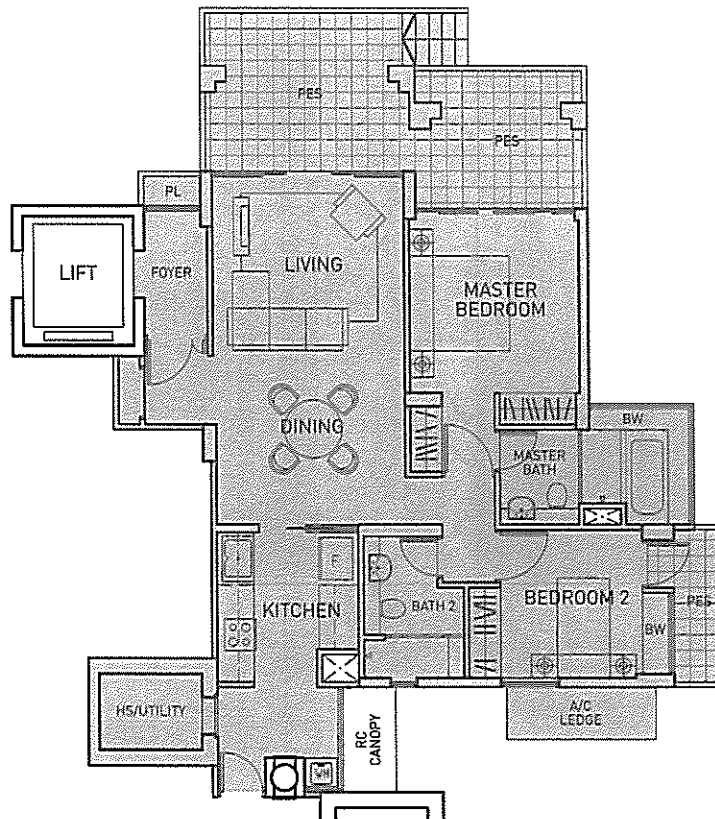
TYPE A  
Two-bedroom units

TYPE B  
Three-bedroom units

TYPE C  
Four-bedroom units

TYPE P  
Penthouses

# TYPE A Two-bedroom units

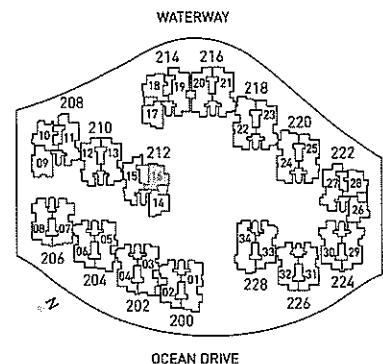


Typical Plan for Type A1 with PES

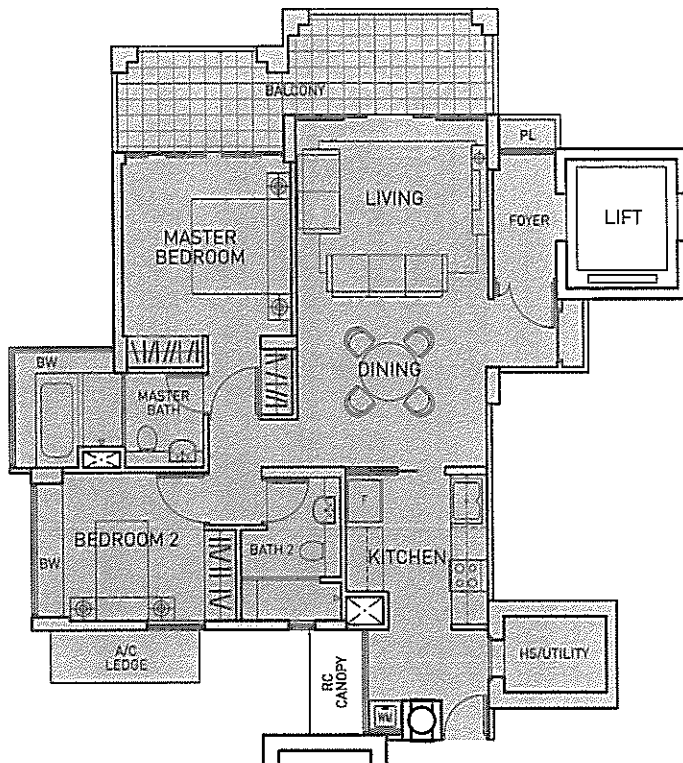
Type A1p2
121 sq.m. (1302 sq.ft.)

Including PES of 26 sq.m. (280 sq.ft.)

The internal area of Types A1p1 to A1p4 is the same.  
The differences are in the shapes and sizes of the  
Private Enclosed Spaces (PES) and planters.

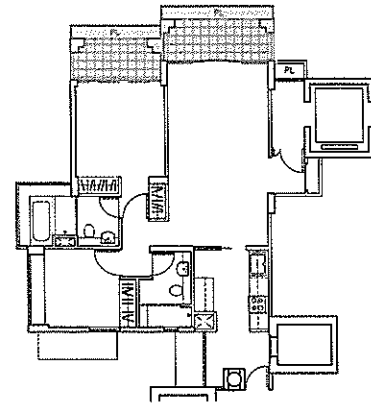


The above plans are not to scale and are subject to any amendment as may be approved by the relevant authorities. All floor areas are approximate and are subject to final survey.



Type A1a
110 sq.m. (1184 sq.ft.)

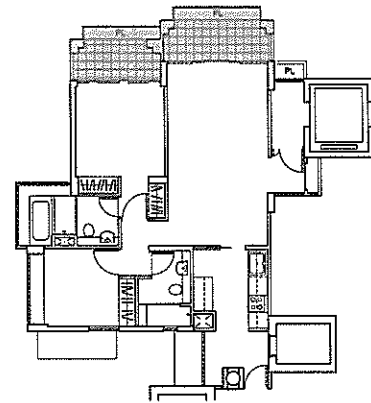
Blocks 208,212 & 214 - 2nd storey



Type A1b

110 sq.m. (1184 sq.ft.)

Blocks 208,212 & 214 - 3rd storey

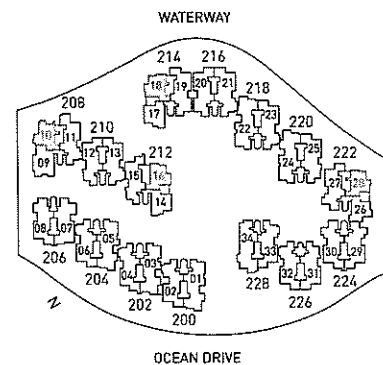


Type A1c

**109 sq.m. (1173 sq.ft.)**

Blocks 208,212 & 214 - 4th & 5th storeys  
Block 222 - 2nd to 5th storeys

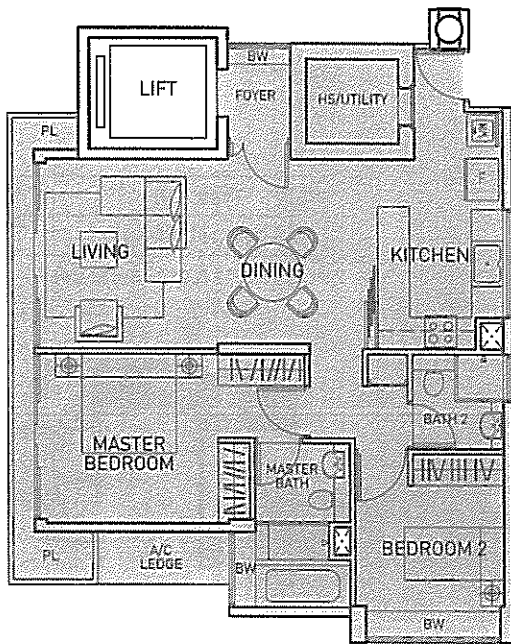
Differences between Types A1a, A1b and A1c are in the sizes of the balconies and planter areas, which are shaded. The rest of their layouts are otherwise identical.



The above plans are not to scale and are subject to any amendment as may be approved by the relevant authorities. All floor areas are approximate and are subject to final survey.

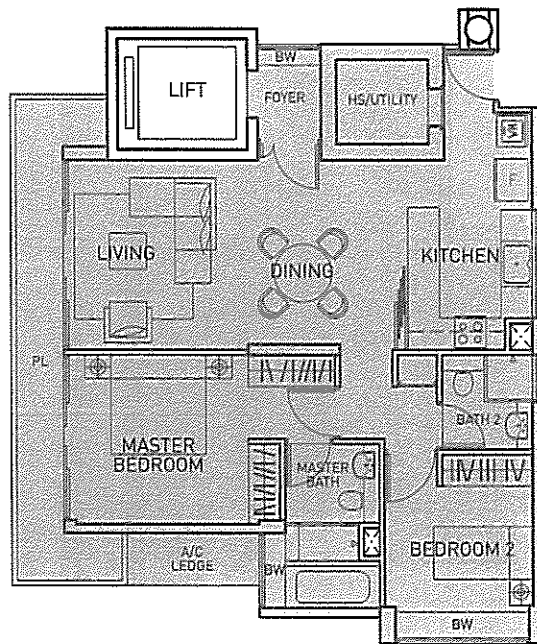


# TYPE A Two-bedroom units



**Type A3a**  
**94 sq.m. (1012 sq.ft.)**

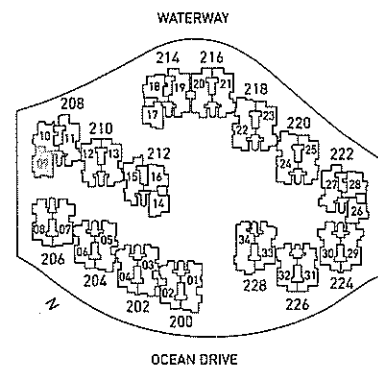
Block 208 - 2nd storey



**Type A3b**  
**98 sq.m. (1055 sq.ft.)**

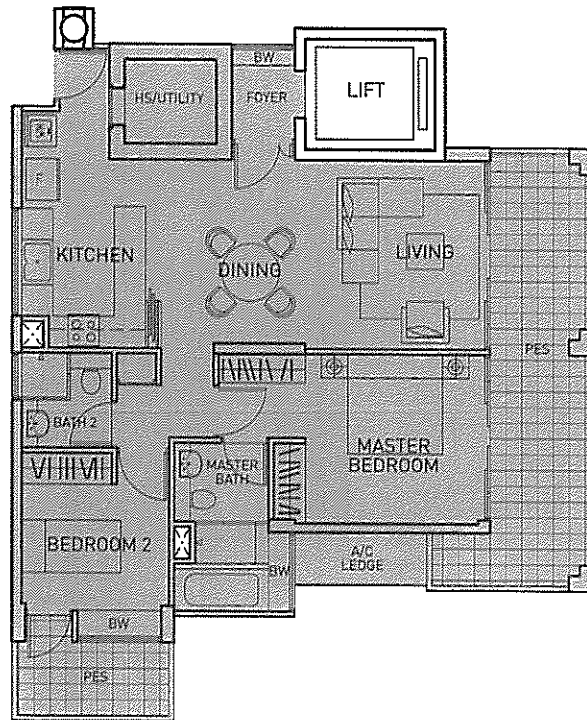
Block 208 - 3rd to 5th storeys

Block 208 #06-09; 127 sq.m. (1367 sq.ft.)  
including strata void of 29 sq.m.



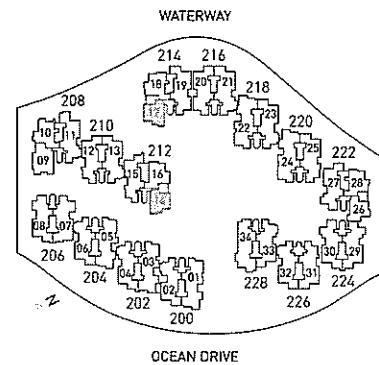
The above plans are not to scale and are subject to any amendment as may be approved by the relevant authorities. All floor areas are approximate and are subject to final survey.

# TYPE A Two-bedroom units



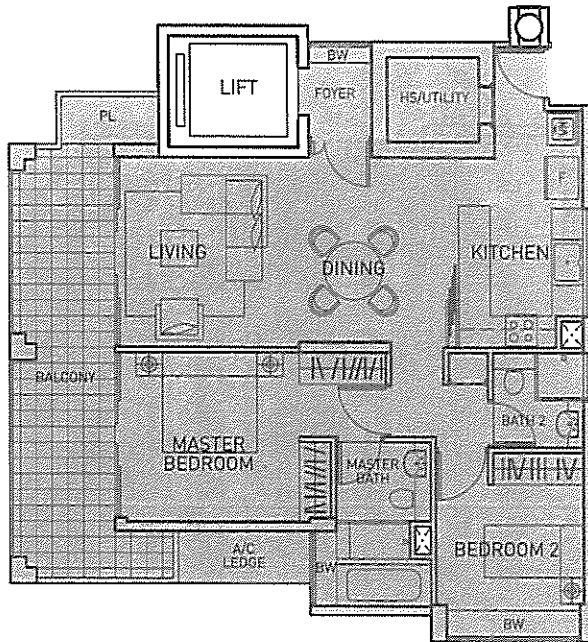
**Type A4p**  
**110 sq.m. (1184 sq.ft.)**

Including PES of 23 sq.m. (248 sq.ft.)

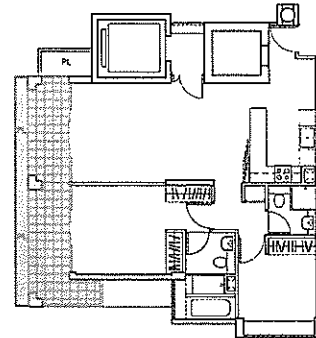


The above plans are not to scale and are subject to any amendment as may be approved by the relevant authorities. All floor areas are approximate and are subject to final survey.

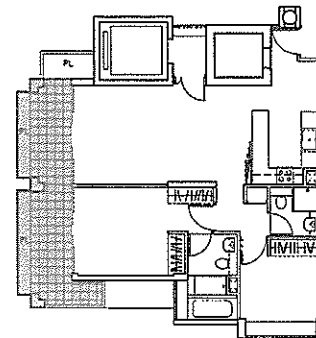
## TYPE A Two-bedroom units



**Type A4a**  
**107 sq.m. (1152 sq.ft.)**  
Blocks 212 & 214 - 2nd storey

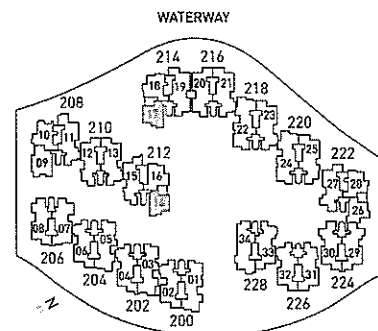


**Type A4b**  
**107 sq.m. (1152 sq.ft.)**  
Blocks 212 & 214 - 3rd storey



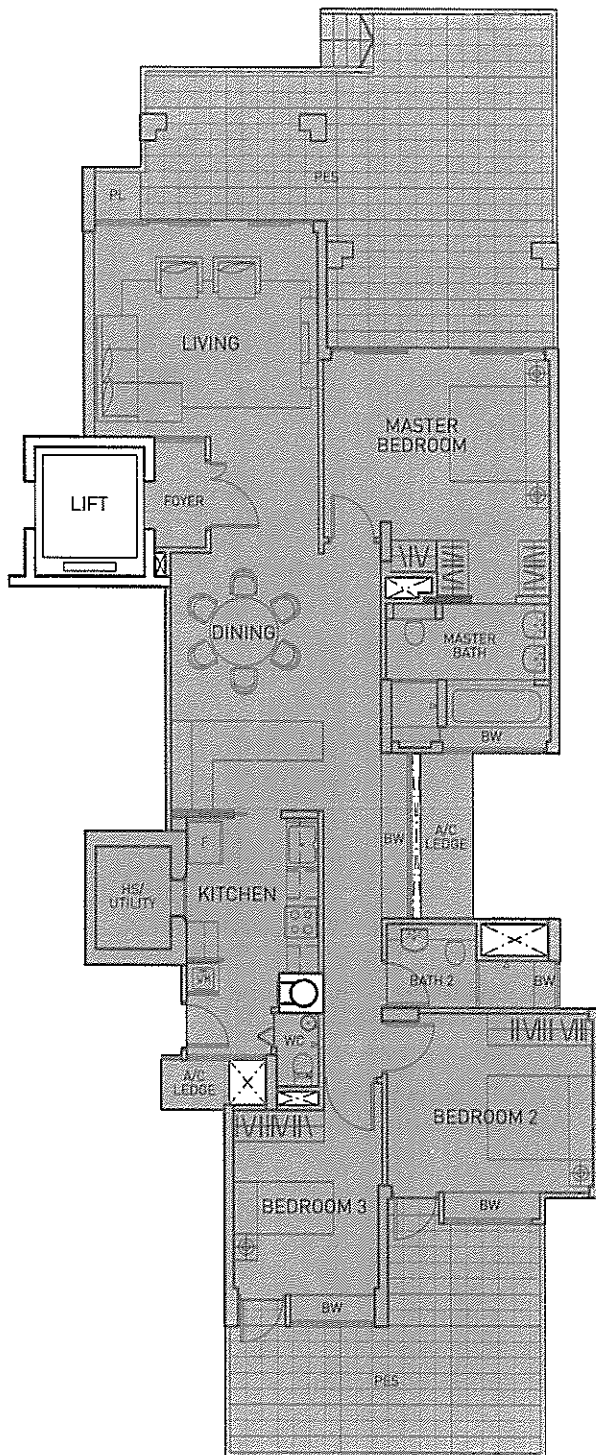
**Type A4c**  
**106 sq.m. (1141 sq.ft.)**  
Blocks 212 & 214 - 4th & 5th storeys  
Block 212 #06-14 and Block 214 #06-17:  
135 sq.m. (1453 sq.ft.) including strata void  
of 29 sq.m. and open terrace of 14 sq.m.

Differences between Types A4a, A4b and A4c are in the sizes of the balconies and planter areas, which are shaded. The rest of their layouts are otherwise identical.



The above plans are not to scale and are subject to any amendment as may be approved by the relevant authorities. All floor areas are approximate and are subject to final survey.

## TYPE B Three-bedroom units



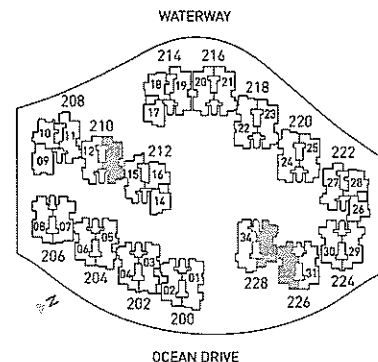
Typical Plan for Type B1 with PES

Type B1p4
198 sq.m. (2131 sq.ft.)

Including PES of 60 sq.m. (646 sq.ft.)

The internal area of Types B1p1 to B1p8 is the same.  
The differences are in the shapes and sizes of the  
Private Enclosed Spaces (PES) and planters.

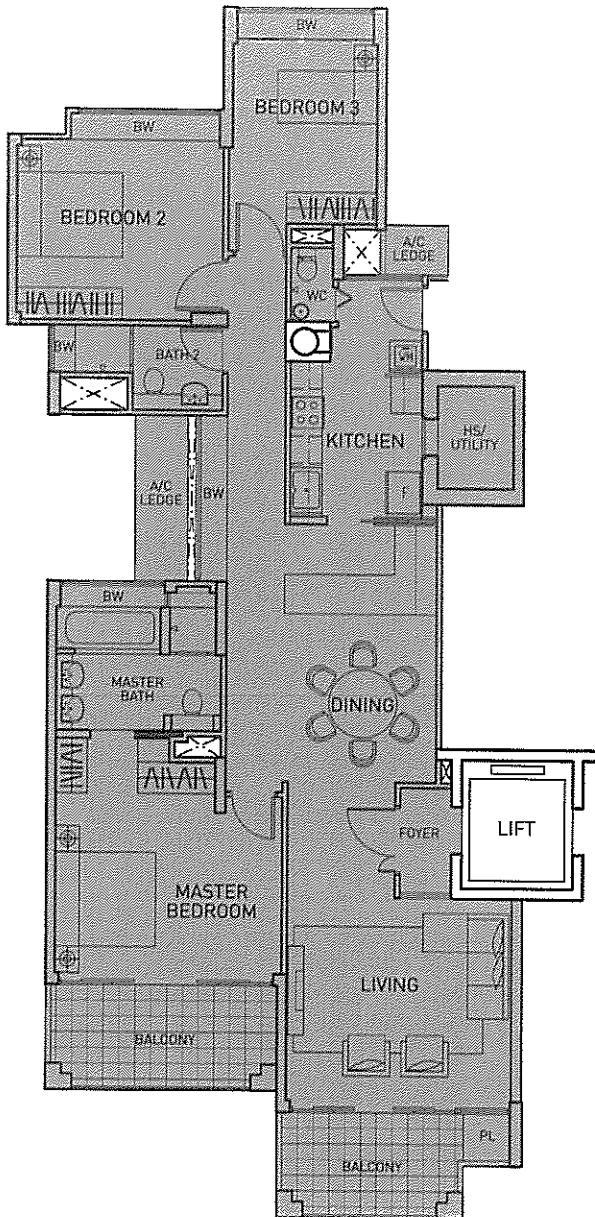
<b>Type B1p4:</b>	Blk 210 #01-13:- 198 sq.m. (including PES of 60 sq.m.)
<b>Type B1p7:</b>	Blk 226 #01-32:- 190 sq.m. (including PES of 52 sq.m.)
<b>Type B1p8:</b>	Blk 228 #01-33:- 192 sq.m. (including PES of 54 sq.m.)



The above plans are not to scale and are subject to any amendment as may be approved by the relevant authorities. All floor areas are approximate and are subject to final survey.

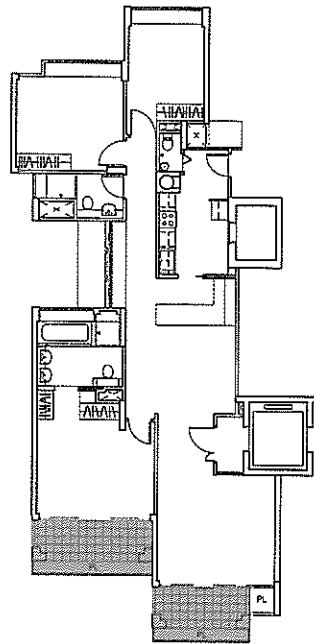


## TYPE B Three-bedroom units



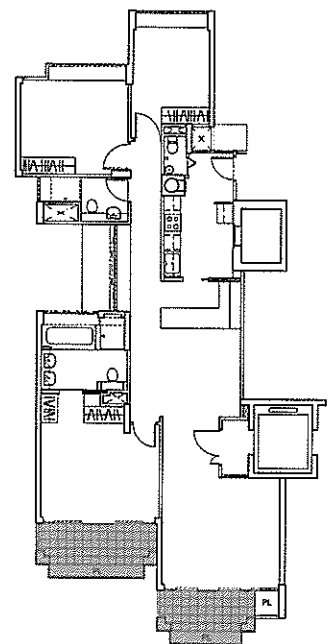
<b>Type B1a</b>
<b>155 sq.m. (1668 sq.ft.)</b>

Blocks 200,202,204,210,  
216(only #02-21),218, - 2nd storey  
226(only #02-32) & 228



<b>Type B1b</b>
<b>155 sq.m. (1668 sq.ft.)</b>

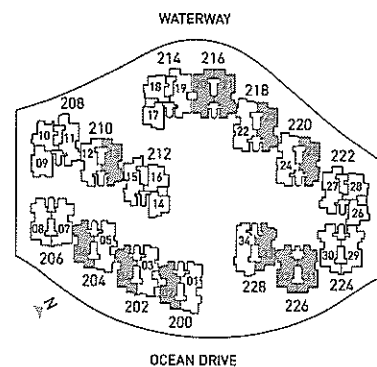
Blocks 200,202,204,210,  
216,218,220,226 & 228 - 3rd storey



<b>Type B1c</b>
<b>154 sq.m. (1658 sq.ft.)</b>

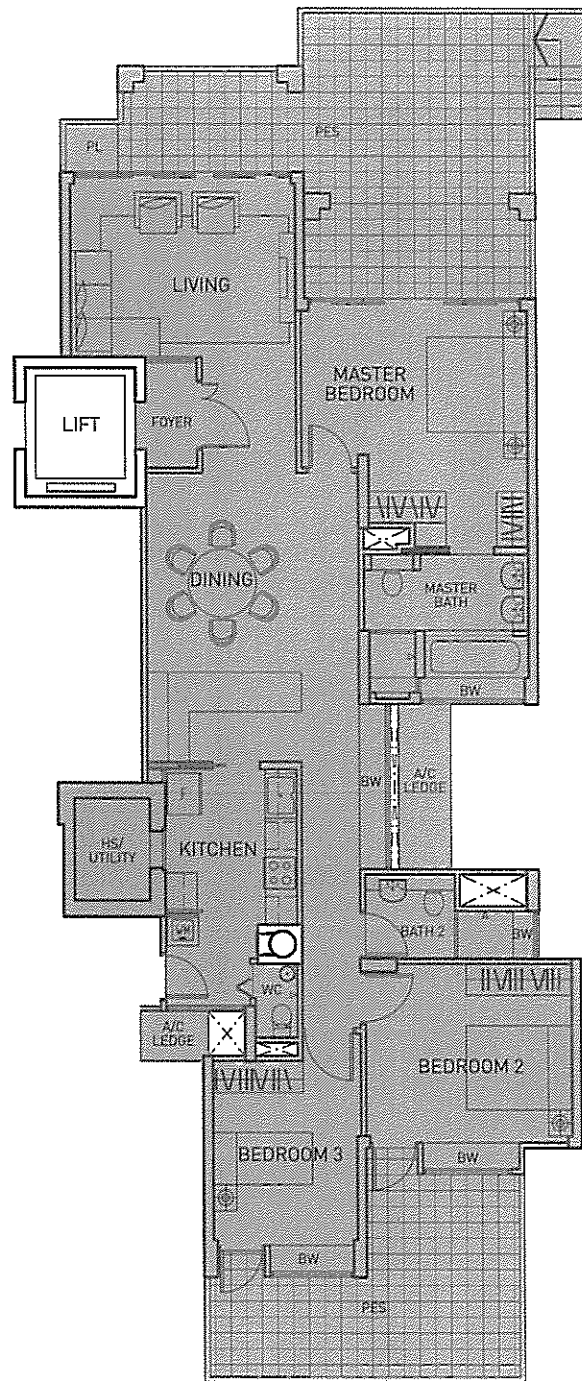
Blocks 200,202,204,210,  
216,218,220,226 & 228 - 4th & 5th storeys

Differences between Types B1a, B1b and B1c are in the sizes of the balconies and planter areas, which are shaded. The rest of their layouts are otherwise identical.

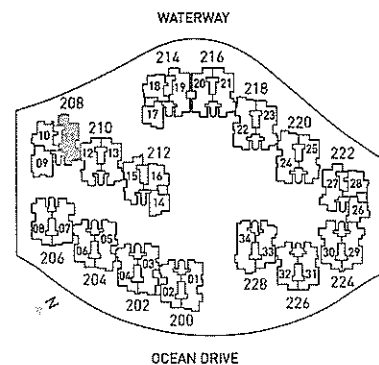


The above plans are not to scale and are subject to any amendment as may be approved by the relevant authorities. All floor areas are approximate and are subject to final survey.

# TYPE B Three-bedroom units

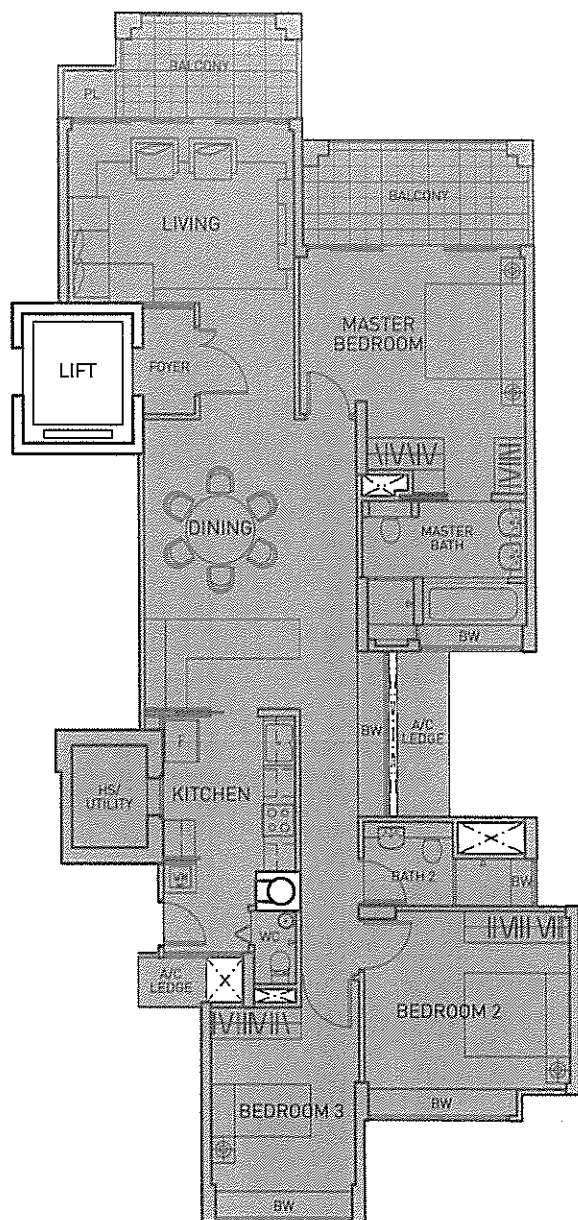


**Type B2p**  
**189 sq.m. (2034 sq.ft.)**  
Including PES of 53 sq.m. (570 sq.ft.)



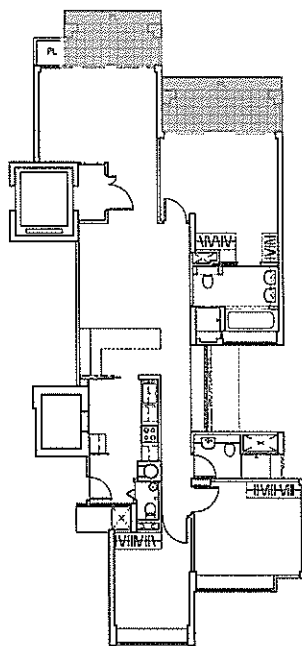
The above plans are not to scale and are subject to any amendment as may be approved by the relevant authorities. All floor areas are approximate and are subject to final survey.

## TYPE B Three-bedroom units



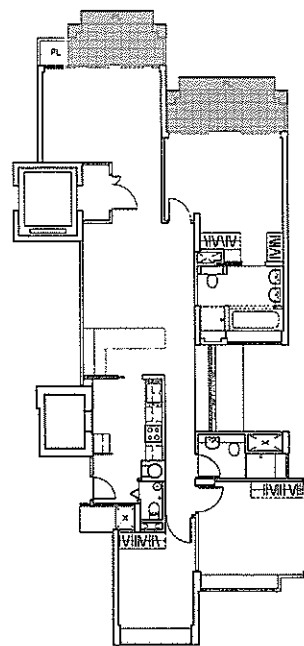
<b>Type B2a</b>
<b>153 sq.m. (1647 sq.ft.)</b>

Block 208 - 2nd storey



<b>Type B2b</b>
<b>153 sq.m. (1647 sq.ft.)</b>

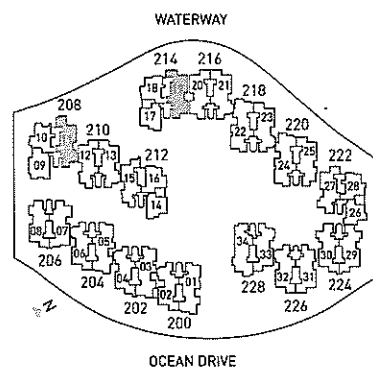
Blocks 208 & 214 - 3rd storey



<b>Type B2c</b>
<b>152 sq.m. (1636 sq.ft.)</b>

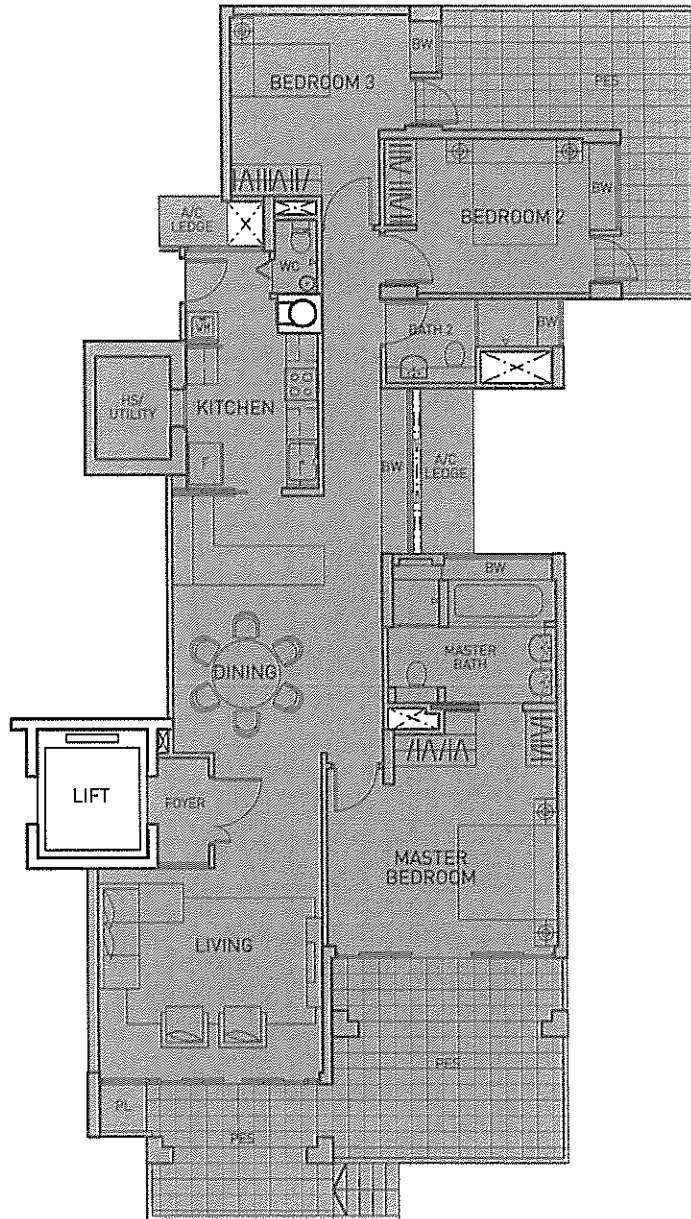
Blocks 208 & 214 - 4th & 5th storeys

Differences between Types B2a, B2b and B2c are in the sizes of the balconies and planter areas, which are shaded. The rest of their layouts are otherwise identical.



The above plans are not to scale and are subject to any amendment as may be approved by the relevant authorities. All floor areas are approximate and are subject to final survey.

## TYPE B Three-bedroom units



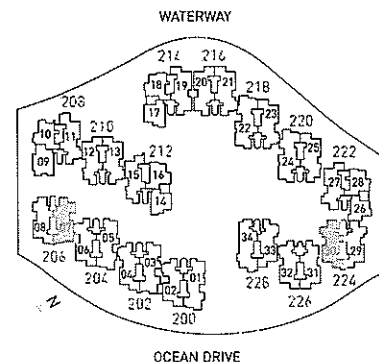
Typical Plan for Type B3 with PES

Type B3p1
<b>183 sq.m. (1970 sq.ft.)</b>

Including PES of 46 sq.m. (495 sq.ft.)

The internal area of Types B3p1 to B3p3 is the same.  
The differences are in the shapes and sizes of the  
Private Enclosed Spaces (PES) and planters.

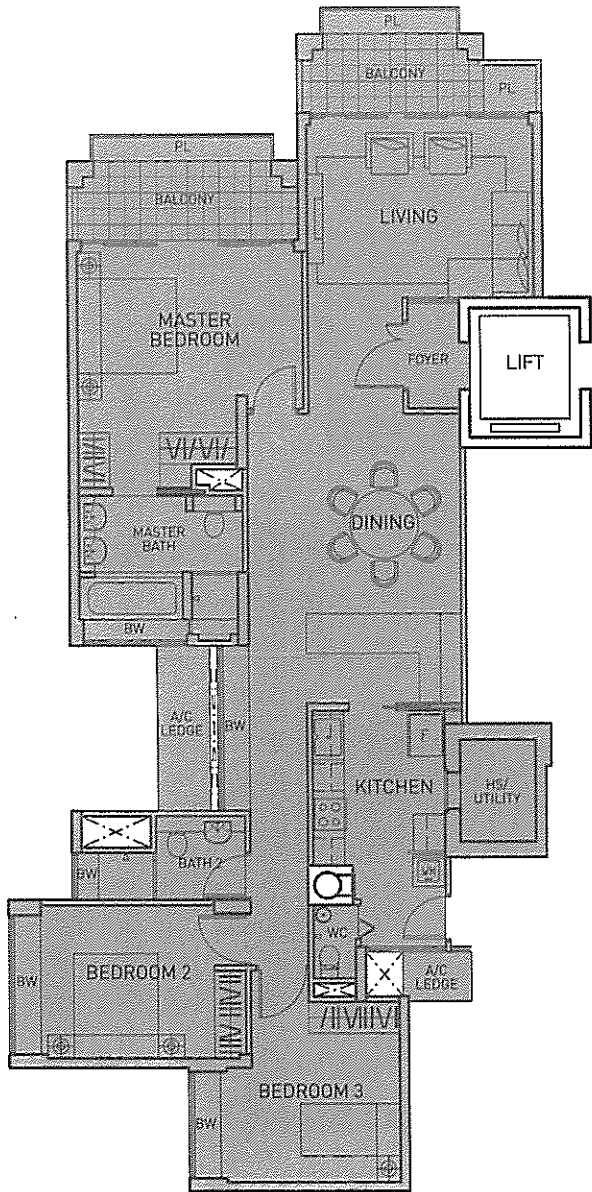
<b>Type B3p1:</b> Blk 206 #01-07:- 183 sq.m. (including PES of 46 sq.m.)
<b>Type B3p3:</b> Blk 224 #01-30:- 186 sq.m. (including PES of 49 sq.m.)



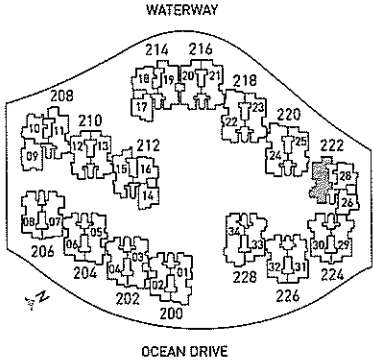
The above plans are not to scale and are subject to any amendment as may be approved by the relevant authorities. All floor areas are approximate and are subject to final survey.



# TYPE B Three-bedroom units

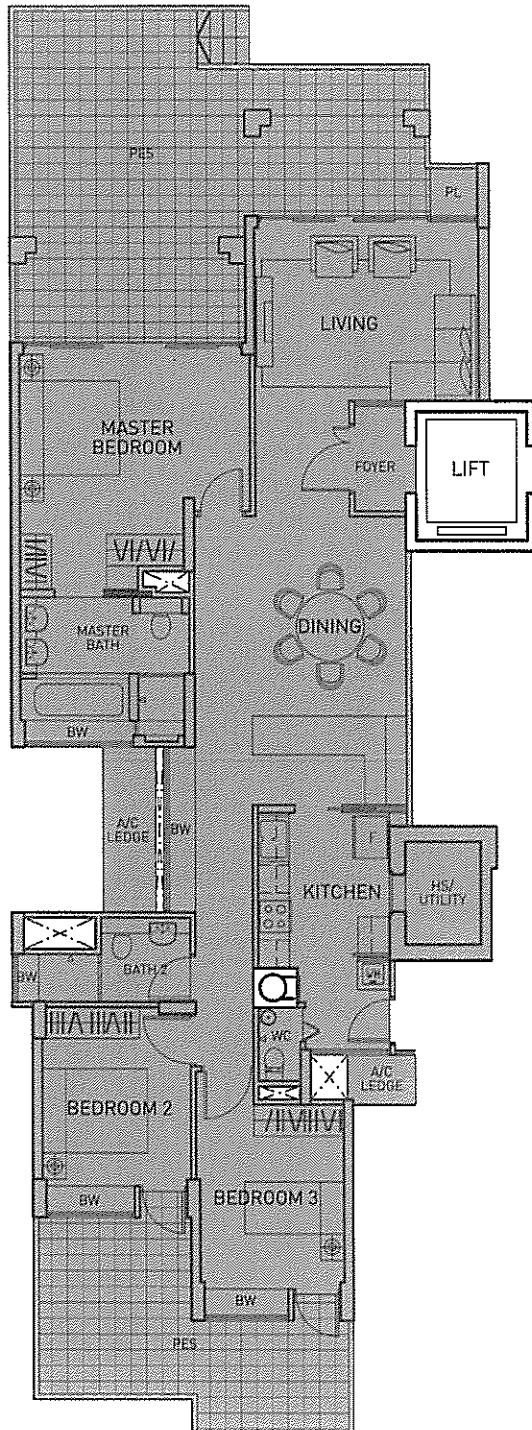


**Type B4**  
**151 sq.m. (1625 sq.ft.)**



The above plans are not to scale and are subject to any amendment as may be approved by the relevant authorities. All floor areas are approximate and are subject to final survey.

## TYPE B Three-bedroom units



Typical Plan for Type B5 with PES

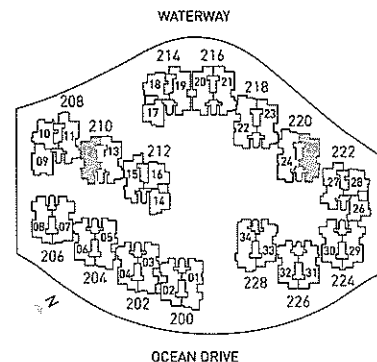
### Type B5p1

**192 sq.m. (2067 sq.ft.)**

Including PES of 58 sq.m. (624 sq.ft.)

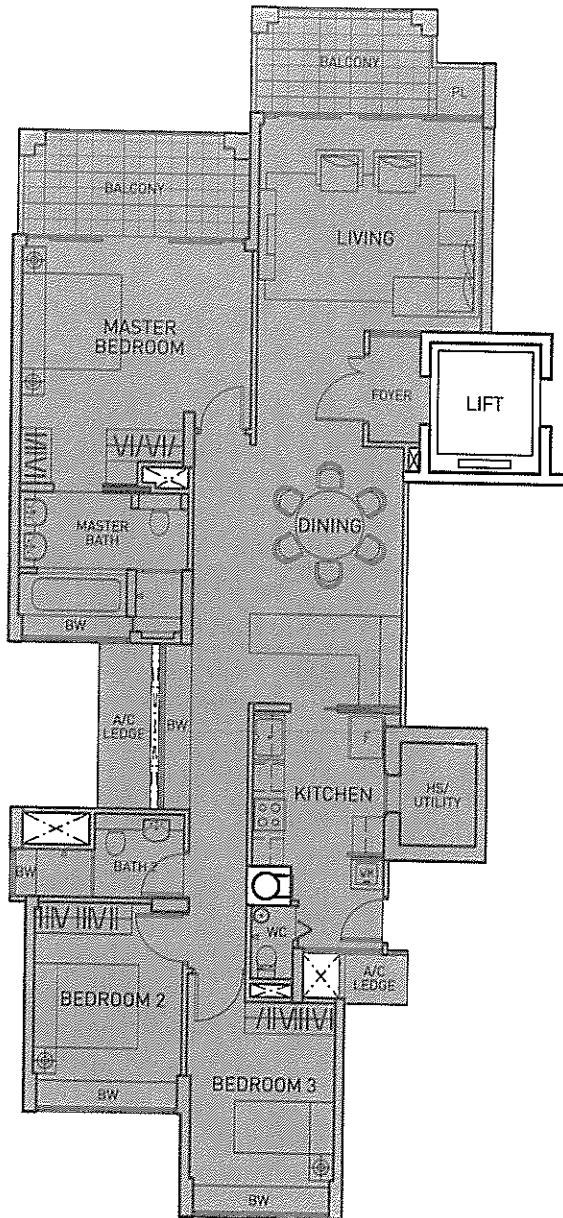
The internal area of Types B5p1 to B5p4 is the same.  
The differences are in the shapes and sizes of the  
Private Enclosed Spaces (PES) and planters.

<b>Type B5p1:</b>	Blk 210 #01-12:- 192 sq.m. (including PES of 58 sq.m.)
<b>Type B5p3:</b>	Blk 220 #01-25:- 175 sq.m. (including PES of 41 sq.m.)



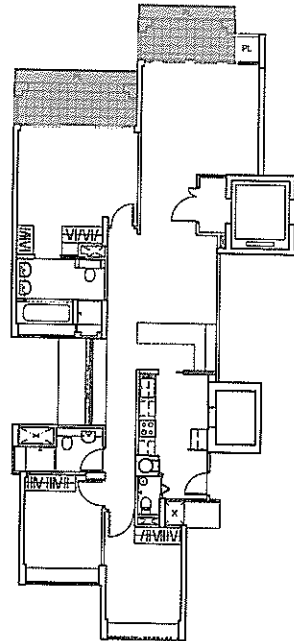
The above plans are not to scale and are subject to any amendment as may be approved by the relevant authorities. All floor areas are approximate and are subject to final survey.

## TYPE B Three-bedroom units



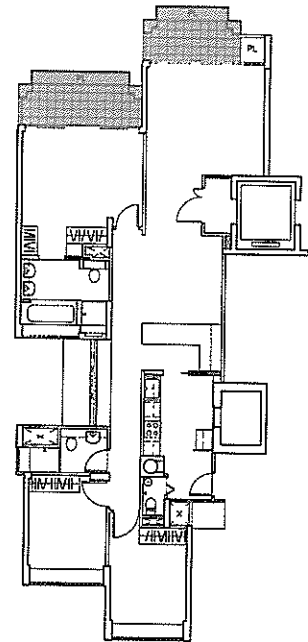
<b>Type B5a</b>
<b>151 sq.m. (1625 sq.ft.)</b>

Blocks 210, 216, 220 & 226 - 2nd storey



<b>Type B5b</b>
<b>151 sq.m. (1625 sq.ft.)</b>

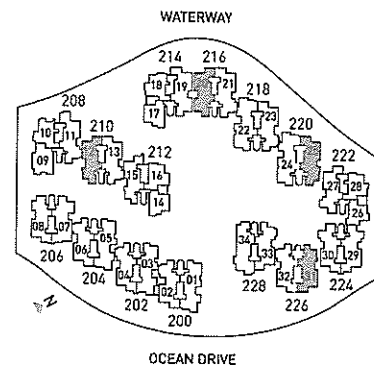
Block 210 - 3rd storey



<b>Type B5c</b>
<b>150 sq.m. (1615 sq.ft.)</b>

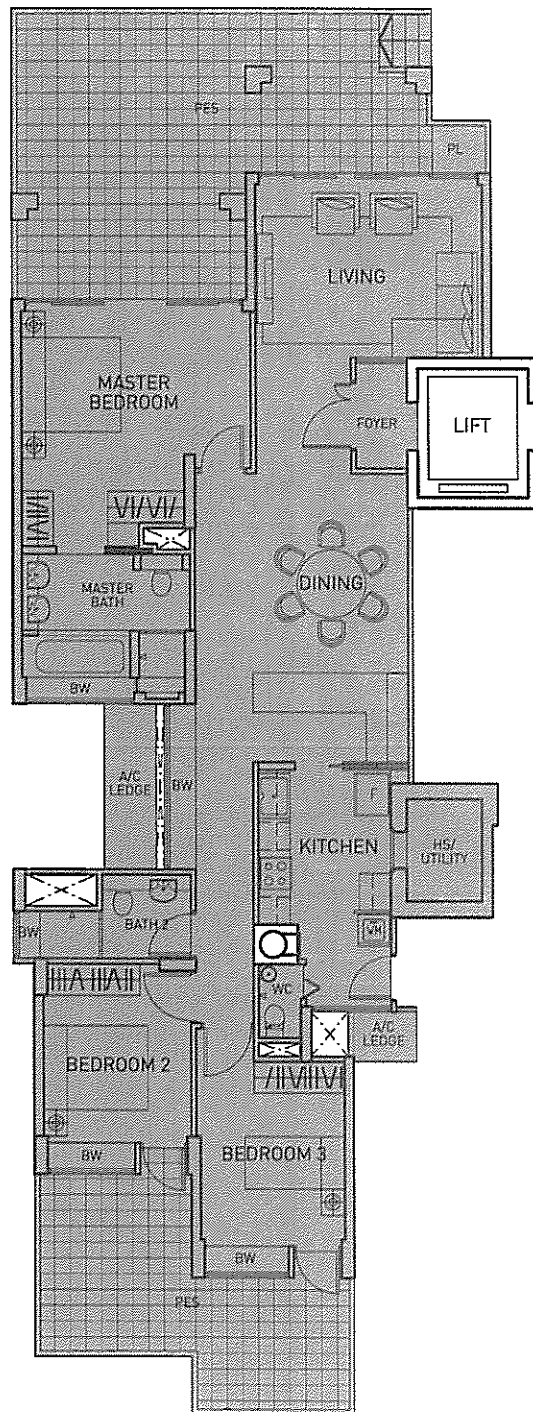
Block 210 - 4th & 5th storeys

Differences between Types B5a, B5b and B5c are in the sizes of the balconies and planter areas, which are shaded. The rest of their layouts are otherwise identical.



The above plans are not to scale and are subject to any amendment as may be approved by the relevant authorities. All floor areas are approximate and are subject to final survey.

## TYPE B Three-bedroom units



Typical Plan for Type B6 with PES

### Type B6p1

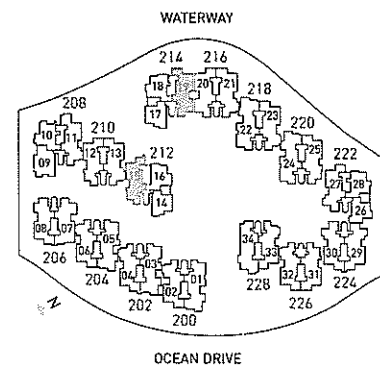
**188 sq.m. (2024 sq.ft.)**

Including PES of 55 sq.m. (592 sq.ft.)

The internal area of Types B6p1 and B6p2 is the same.  
The differences are in the shapes and sizes of the  
Private Enclosed Spaces (PES) and planters.

**Type B6p1:** Blk 212 #01-15:- 188 sq.m. (including PES of 55 sq.m.)

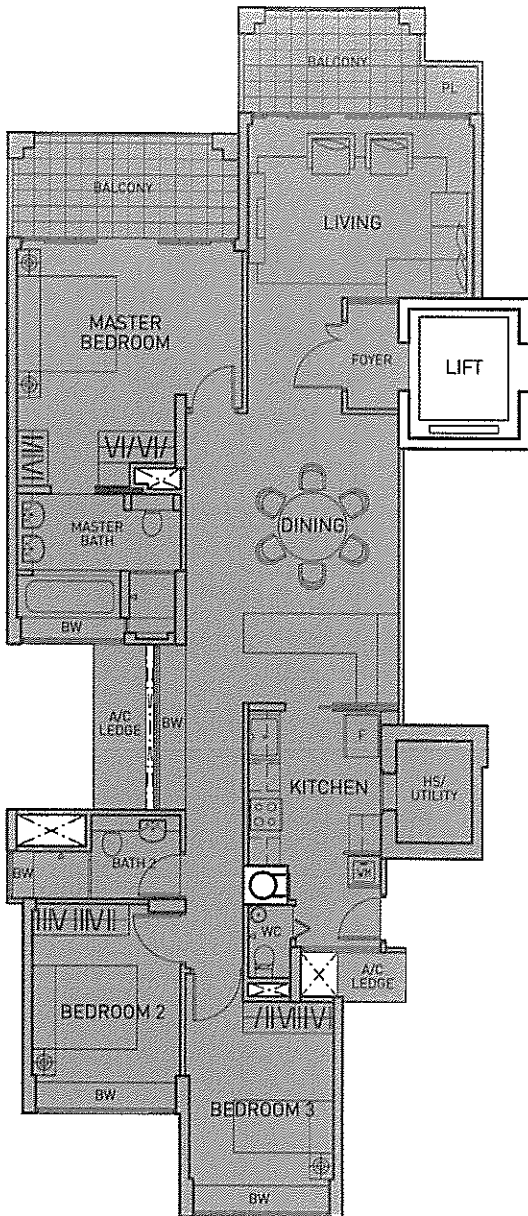
**Type B6p2:** Blk 214 #01-19:- 190 sq.m. (including PES of 57 sq.m.)



The above plans are not to scale and are subject to any amendment as may be approved by the relevant authorities. All floor areas are approximate and are subject to final survey.

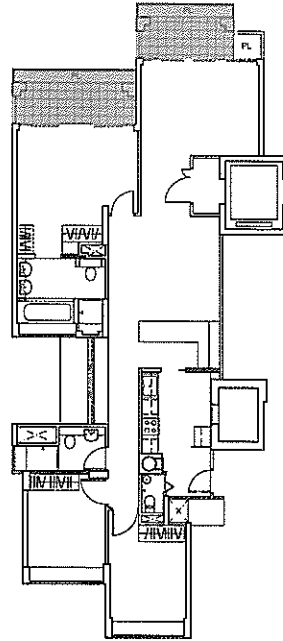


## TYPE B Three-bedroom units



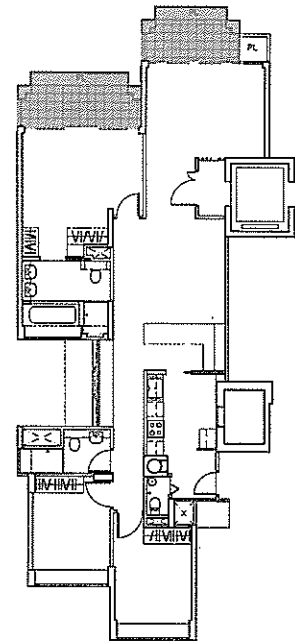
<b>Type B6a</b>
<b>150 sq.m. (1615 sq.ft.)</b>

Blocks 212 & 214 - 2nd storey



<b>Type B6b</b>
<b>150 sq.m. (1615 sq.ft.)</b>

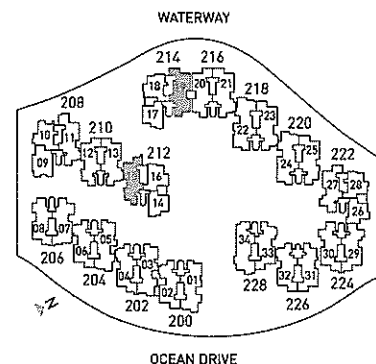
Block 212 - 3rd storey



<b>Type B6c</b>
<b>149 sq.m. (1604 sq.ft.)</b>

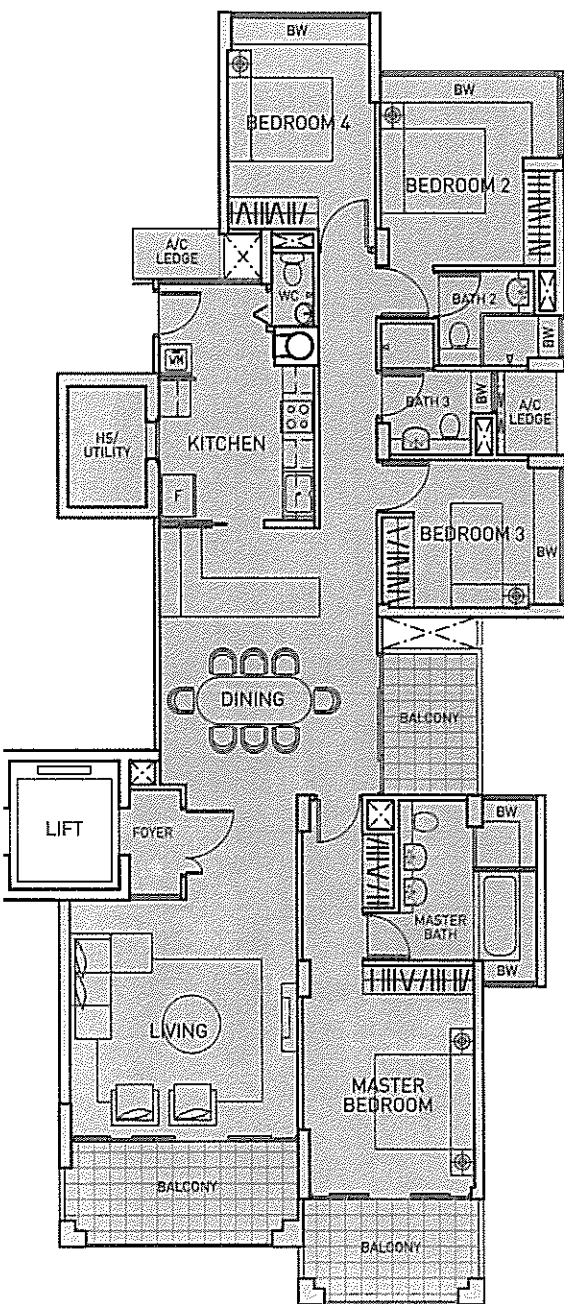
Block 212 - 4th & 5th storeys

Differences between Types B6a, B6b and B6c are in the sizes of the balconies and planter areas, which are shaded. The rest of their layouts are otherwise identical.



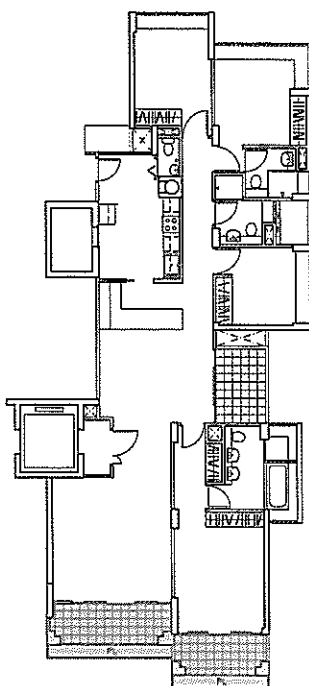
The above plans are not to scale and are subject to any amendment as may be approved by the relevant authorities. All floor areas are approximate and are subject to final survey.

## TYPE C Four-bedroom units



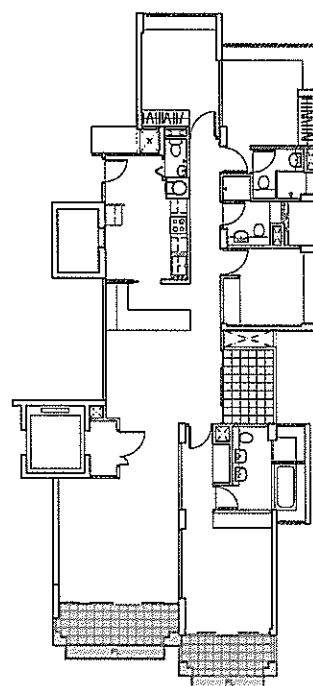
<b>Type C2a</b>
<b>177 sq.m. (1905 sq.ft.)</b>

Blocks 200,218,220 & 228 - 2nd storey



<b>Type C2b</b>
<b>177 sq.m. (1905 sq.ft.)</b>

Blocks 200,218,220 & 228 - 3rd storey

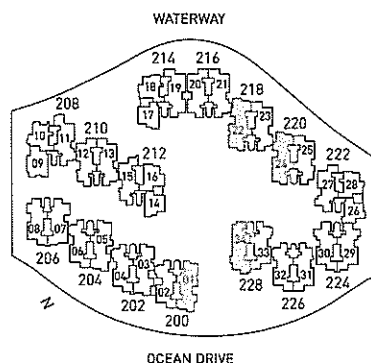


<b>Type C2c</b>
<b>175 sq.m. (1884 sq.ft.)</b>

Blocks 200,218,220 & 228 - 4th & 5th storeys

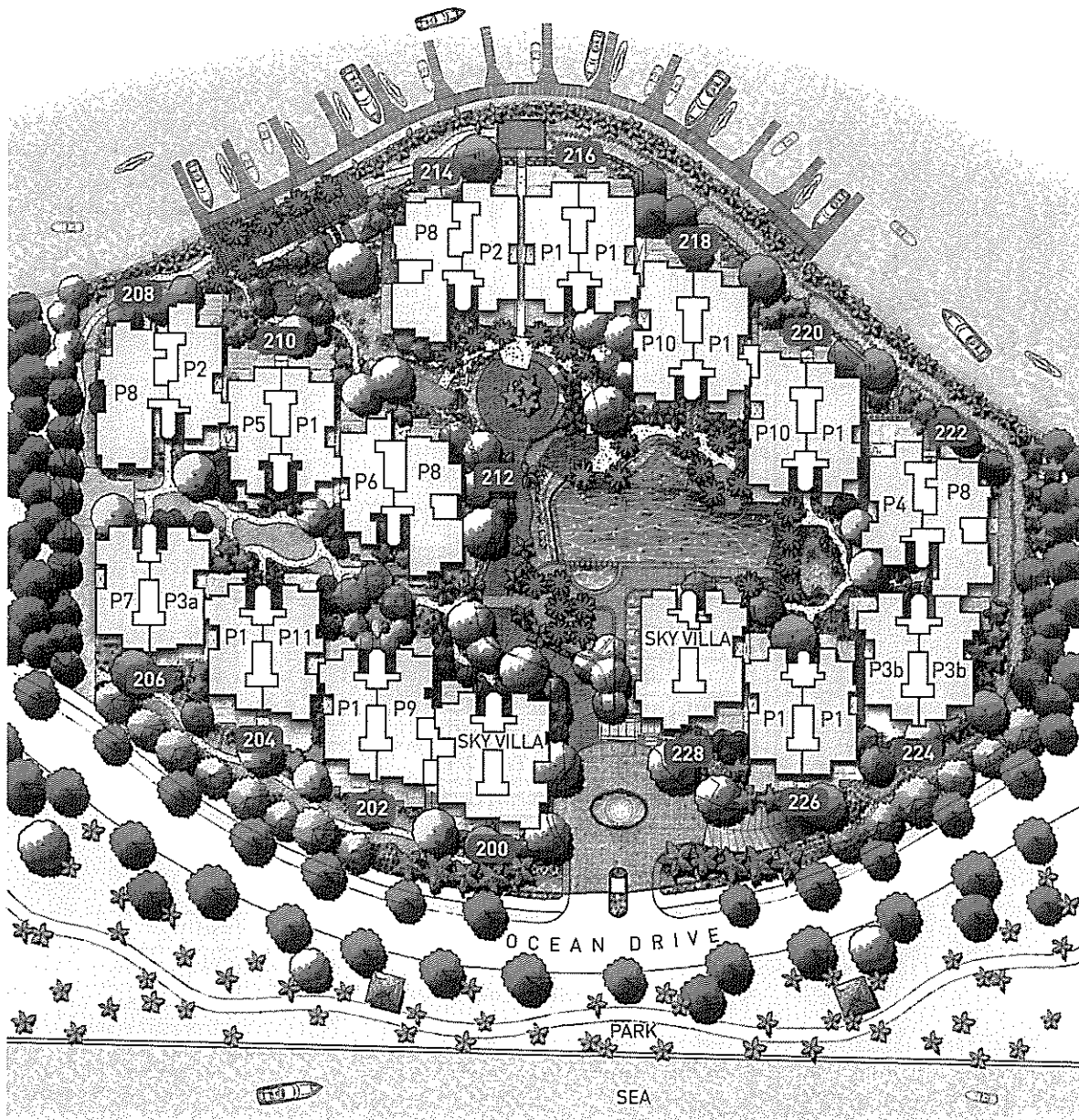
Block 200 #05-01 and Block 228 #05-34:  
189 sq.m. (2034 sq.ft.) including  
strata void of 14 sq.m.

Differences between Types C2a, C2b and C2c are in the sizes of the balconies and planter areas, which are shaded. The rest of their layouts are otherwise identical.



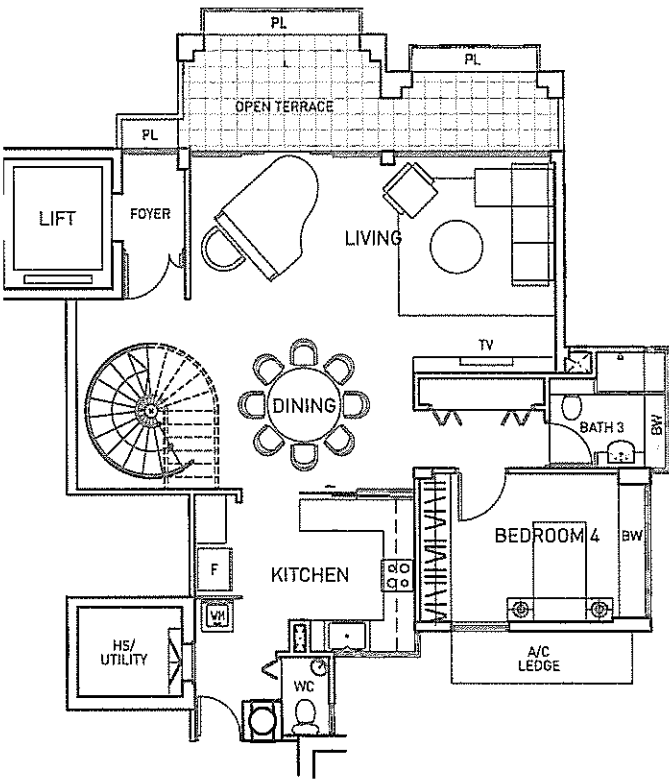
The above plans are not to scale and are subject to any amendment as may be approved by the relevant authorities. All floor areas are approximate and are subject to final survey.

# PENTHOUSES

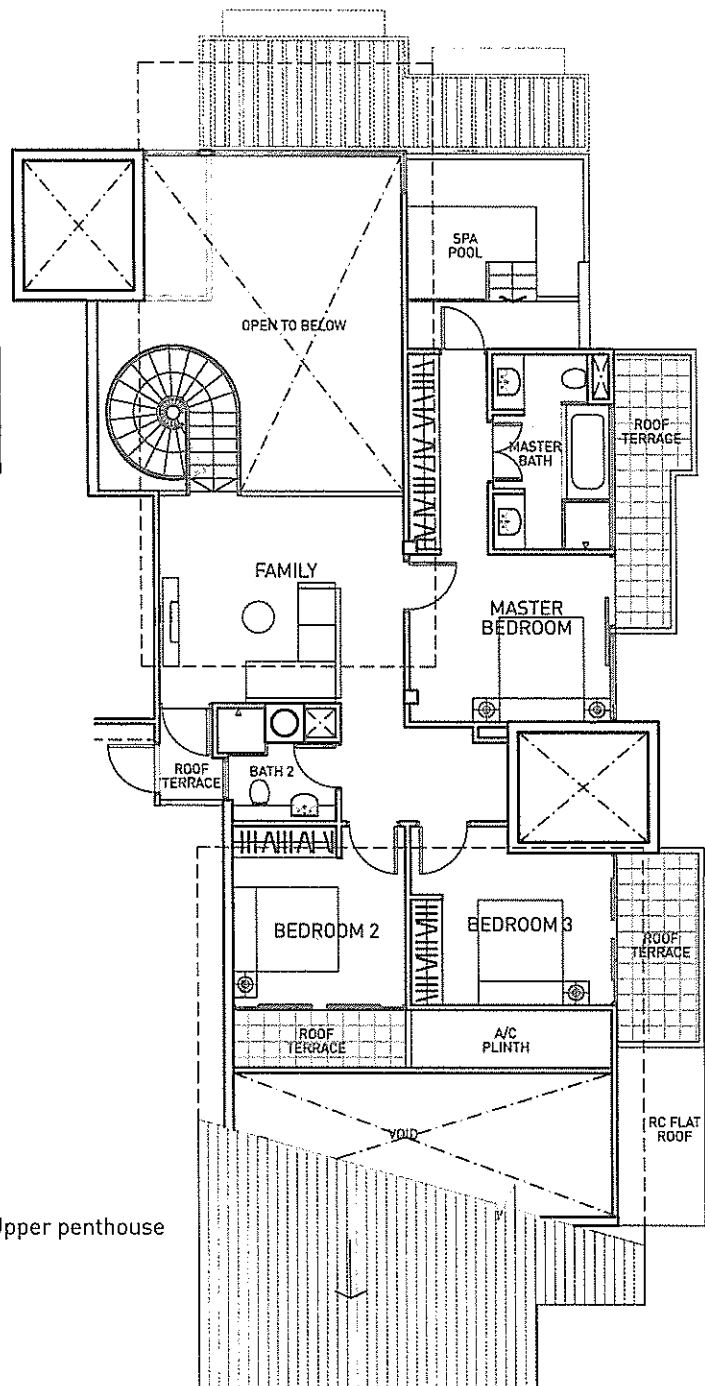


TYPE P  
Penthouses

## TYPE P Penthouse units



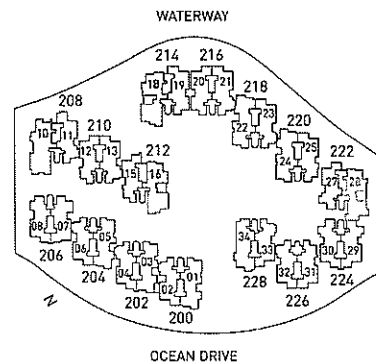
Lower penthouse



Upper penthouse

Type P8
273 sq.m. (2939 sq.ft.)

Including open terrace of 14 sq.m.,  
roof terrace/spa pool of 25 sq.m.  
and strata void of 30 sq.m.



The above plans are not to scale and are subject to any amendment as may be approved by the relevant authorities. All floor areas are approximate and are subject to final survey.



An exclusive home presented by



**HO BEE GROUP**

**Project Manager**

Ho Bee Investment Ltd

**Main Contractor**

Kim Seng Heng Engineering Construction (Pte) Ltd

**Consultants**

**Architect**

Axis Architects Planners

**Structural Engineer**

Arup Singapore Pte Ltd

**M&E Engineer**

Bescon Consulting Engineers Pte Ltd

**Quantity Surveyor**

Davis Langdon & Seah Singapore Pte Ltd

**Landscape Architect**

Site Concepts International Pte Ltd

## SPECIFICATIONS

### INTERIOR FEATURES AND PROVISIONS\*

#### Living & Dining

- Natural marble floor tiles with timber skirting
- Ducted air-conditioning system
- Ceramic and/or homogeneous floor tiles to private enclosed spaces, balconies, open terraces and roof terraces, where applicable

#### Master Bedroom

- Teak timber strip flooring with timber skirting
- Split air-conditioning system with wall-mounted fan coil
- Built-in wardrobe with electronic safe

#### Master Bathroom

- Natural marble wall and floor tiles
- Marble vanity top complete with basin and mixer with under counter cabinet
- Frameless glass shower screen complete with shower mixer, rain shower and hand shower set
- Long bath complete with bath mixer
- Mirror, magazine rack, paper holder, towel rack/rail, towel ring, hair dryer with shaver point
- Wall-hung water closet

#### Other Bedrooms

- Teak timber strip flooring with timber skirting
- Split air-conditioning system with wall-mounted fan coil
- Built-in wardrobe

#### Bathroom 2/3

- Ceramic and/or homogeneous tiles to wall and floor
- Marble vanity top complete with basin and mixer with under counter cabinet
- Shower screen complete with shower mixer and hand shower set
- Mirror, paper holder, towel rail
- Wall-hung water closet

#### Kitchen

- Ceramic and/or homogeneous tiles to wall and floor
- High and low kitchen cabinets with hard worktop complete with sink, built-in hood, gas hob and oven
- Provision of town gas

### Additional Features

- Security access control for private lift to individual apartments
- Security access control to basement lobbies and first storey staircases
- Audio/Video intercom with links to basement lobbies and first storey staircases

### Additional Features for Penthouses and Sky Villas

- Ducted air-conditioning system in the master bedroom for Penthouses and in all bedrooms for Sky Villas
- Natural marble and/or granite tiles to all bathrooms and powder-room, where applicable
- Dish washer in the kitchen
- Spa pool at roof terrace for Penthouses and swimming pool for Sky Villas only
- Long bath with whirlpool system in the master bath for Sky Villas only

### RECREATIONAL AND COMMUNAL FACILITIES

- Swimming pool
- Children's pool
- Jacuzzi/Spa
- Gymnasium
- Multi-purpose room
- Cascading waterfall
- Landscaped garden with sunken court
- Pavilions and BBQ corner
- Tea Deck
- Lagoon
- Lotus pond
- Male and Female Changing rooms with steam bath

\*only main provisions are highlighted here.

Developer: Ho Bee (Sentosa) Pte Ltd • Tenure of Land: 99 years from 18 March 2004 • Location: Lot 1392M MK34 at Ocean Drive (Land Parcel C2)  
• BP Approval Date: 8 November 2004 • Building Plan No.: A0905-048-2004-BPD1 • Developer's License No: B1894 • Expected Date of TOP: 31 December 2007  
• Expected Date of Legal Completion: 31 December 2010

All art renderings contained in this brochure are artist's impression only. The developer reserves the right to modify any part or parts of the building, development and/or any unit prior to completion as directed or approved by the architects and/or the relevant authorities. While every reasonable care has been taken in preparing this brochure, the Developer cannot be held responsible for any inaccuracy in its contents. All plans, internal layouts, information and specifications are subject to changes and cannot form part of an offer or a representation.

All areas are approximate and subject to final survey.