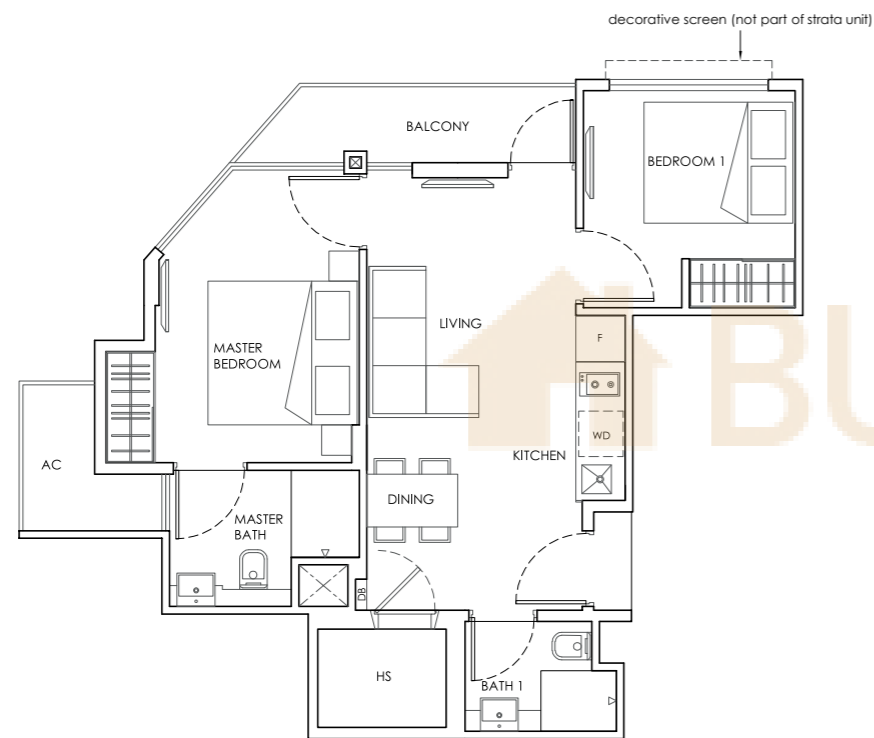


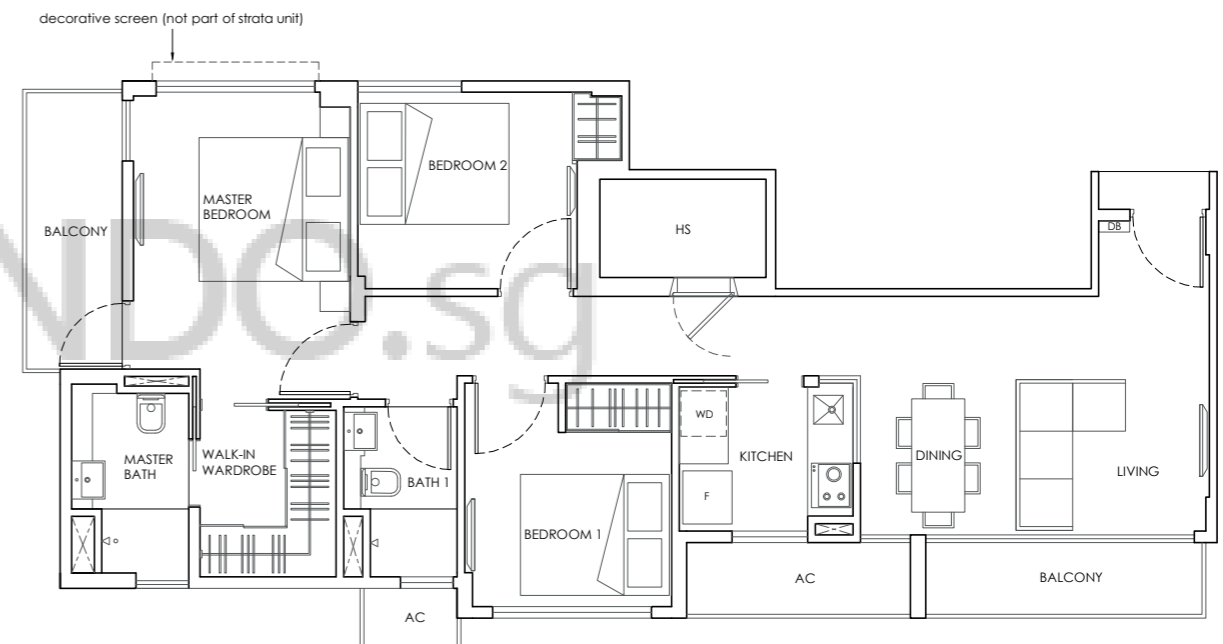
**2-BEDROOM
TYPE A**

60 sqm / 646 sqft
#02-04, #03-04

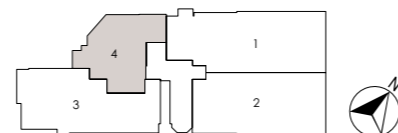


**3-BEDROOM
TYPE B1**

92 sqm / 990 sqft
#02-03, #03-03



The plans are subject to amendments as may be required or approved by the relevant authorities. Floor areas are estimates only and subject to final survey. Plans are not drawn to scale and do not form part of the contract. The balcony shall not be enclosed unless with the approved balcony screen. For an illustration of the approved balcony screen, please refer to the end of this brochure. The approved balcony screen will be installed at buyer's own cost should the buyer intend to have balcony enclosure.

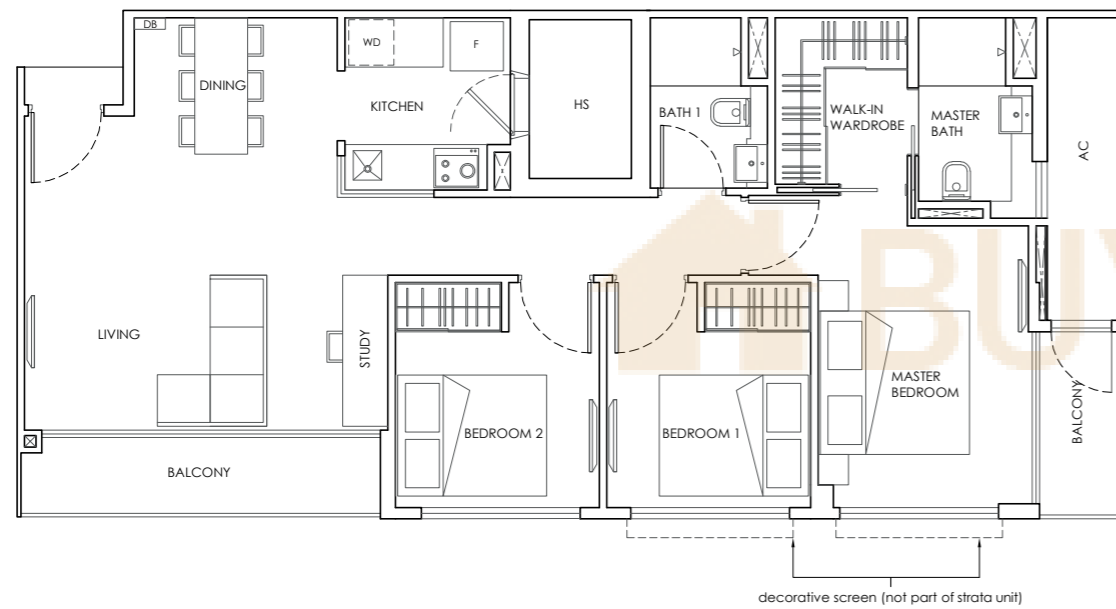


The plans are subject to amendments as may be required or approved by the relevant authorities. Floor areas are estimates only and subject to final survey. Plans are not drawn to scale and do not form part of the contract. The balcony shall not be enclosed unless with the approved balcony screen. For an illustration of the approved balcony screen, please refer to the end of this brochure. The approved balcony screen will be installed at buyer's own cost should the buyer intend to have balcony enclosure.

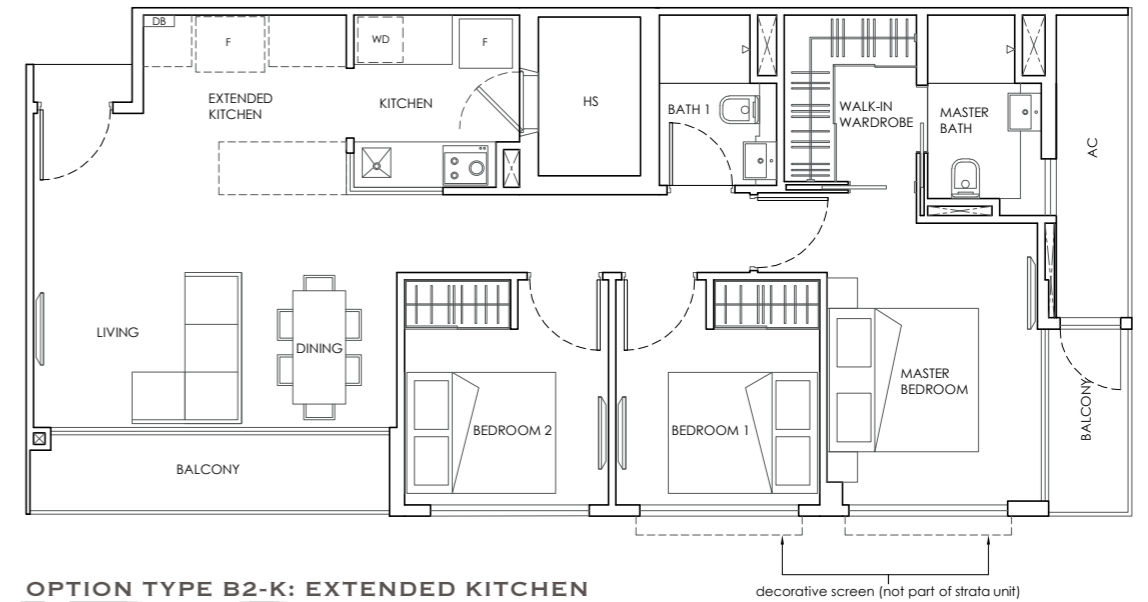


**3-BEDROOM
TYPE B2-S**

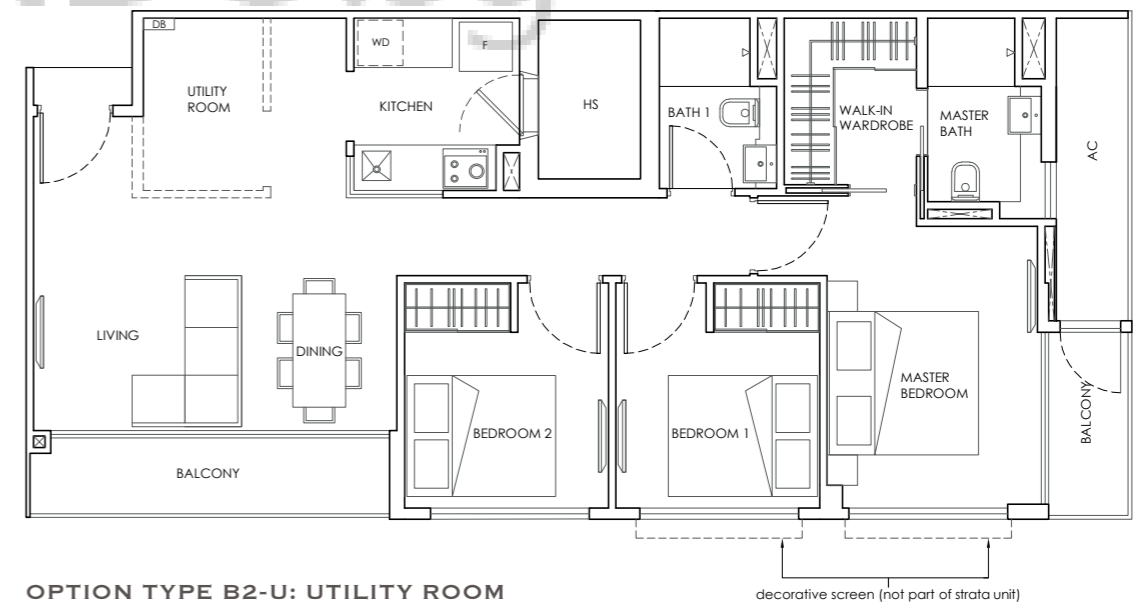
97 sqm / 1,044 sqft
#02-02, #03-02, #04-02



TYPE B2 SUGGESTED ID OPTIONS



OPTION TYPE B2-K: EXTENDED KITCHEN

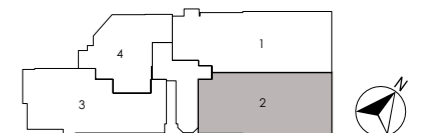


OPTION TYPE B2-U: UTILITY ROOM

The plans are subject to amendments as may be required or approved by the relevant authorities. Floor areas are estimates only and subject to final survey. Plans are not drawn to scale and do not form part of the contract. The balcony shall not be enclosed unless with the approved balcony screen. For an illustration of the approved balcony screen, please refer to the end of this brochure. The approved balcony screen will be installed at buyer's own cost should the buyer intend to have balcony enclosure.



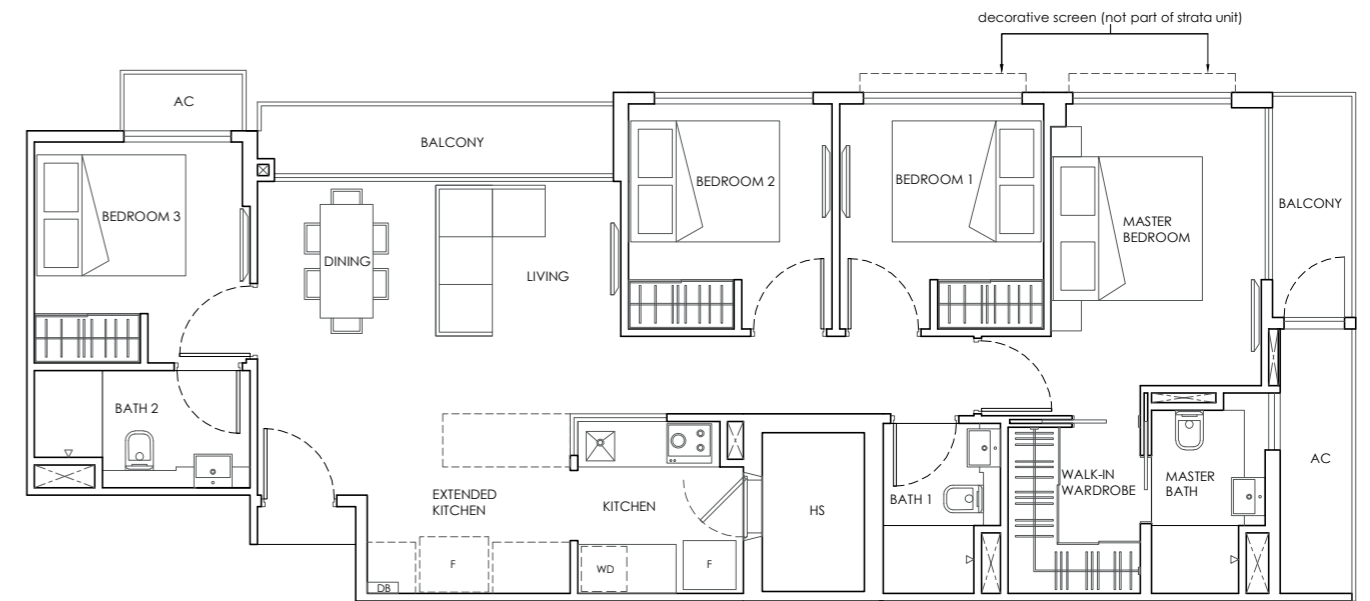
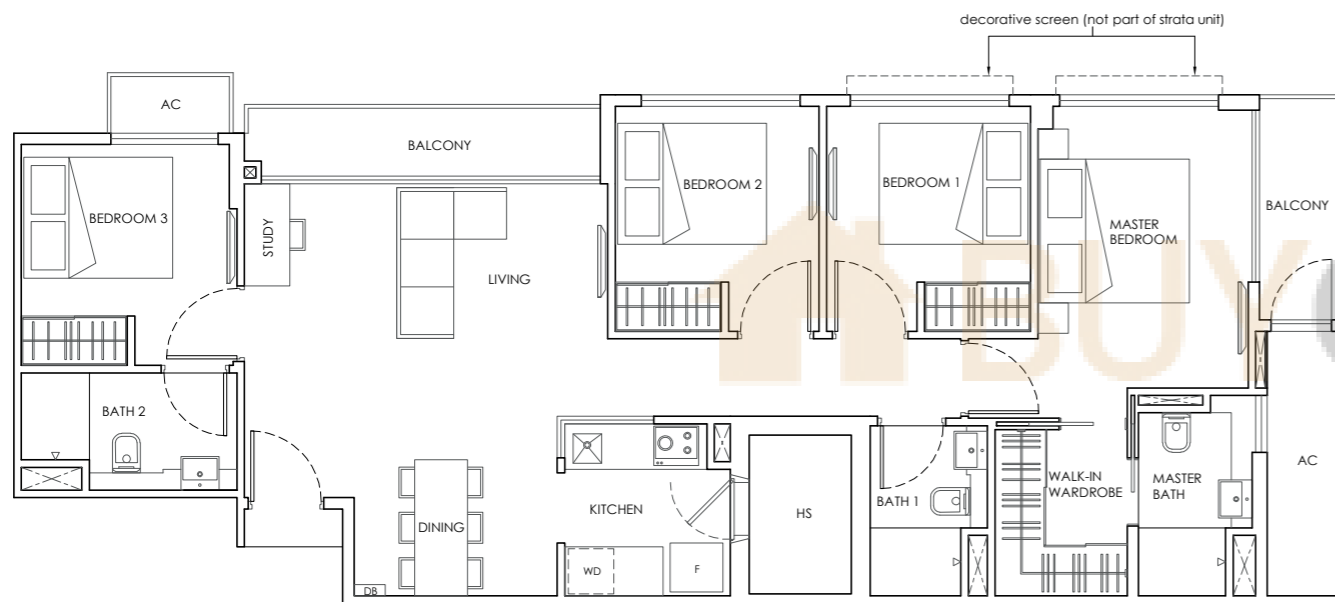
The plans are subject to amendments as may be required or approved by the relevant authorities. Floor areas are estimates only and subject to final survey. Plans are not drawn to scale and do not form part of the contract. The balcony shall not be enclosed unless with the approved balcony screen. For an illustration of the approved balcony screen, please refer to the end of this brochure. The approved balcony screen will be installed at buyer's own cost should the buyer intend to have balcony enclosure.



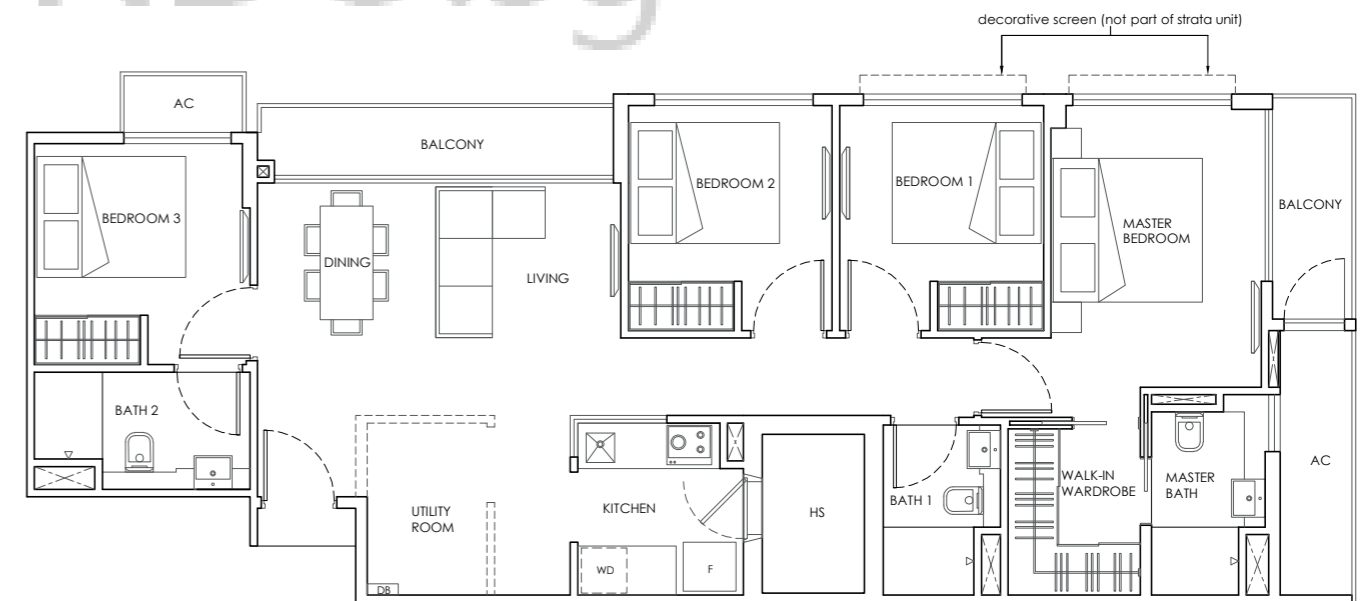
**4-BEDROOM
TYPE C-S**

111 sqm / 1,195 sqft
#02-01, #03-01, #04-01

TYPE C SUGGESTED ID OPTIONS

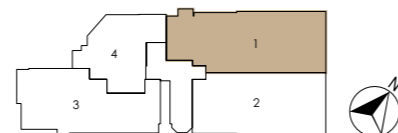


OPTION TYPE C-K: EXTENDED KITCHEN

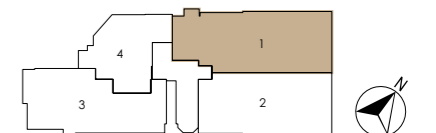


OPTION TYPE C-U: UTILITY ROOM

The plans are subject to amendments as may be required or approved by the relevant authorities. Floor areas are estimates only and subject to final survey. Plans are not drawn to scale and do not form part of the contract. The balcony shall not be enclosed unless with the approved balcony screen. For an illustration of the approved balcony screen, please refer to the end of this brochure. The approved balcony screen will be installed at buyer's own cost should the buyer intend to have balcony enclosure.



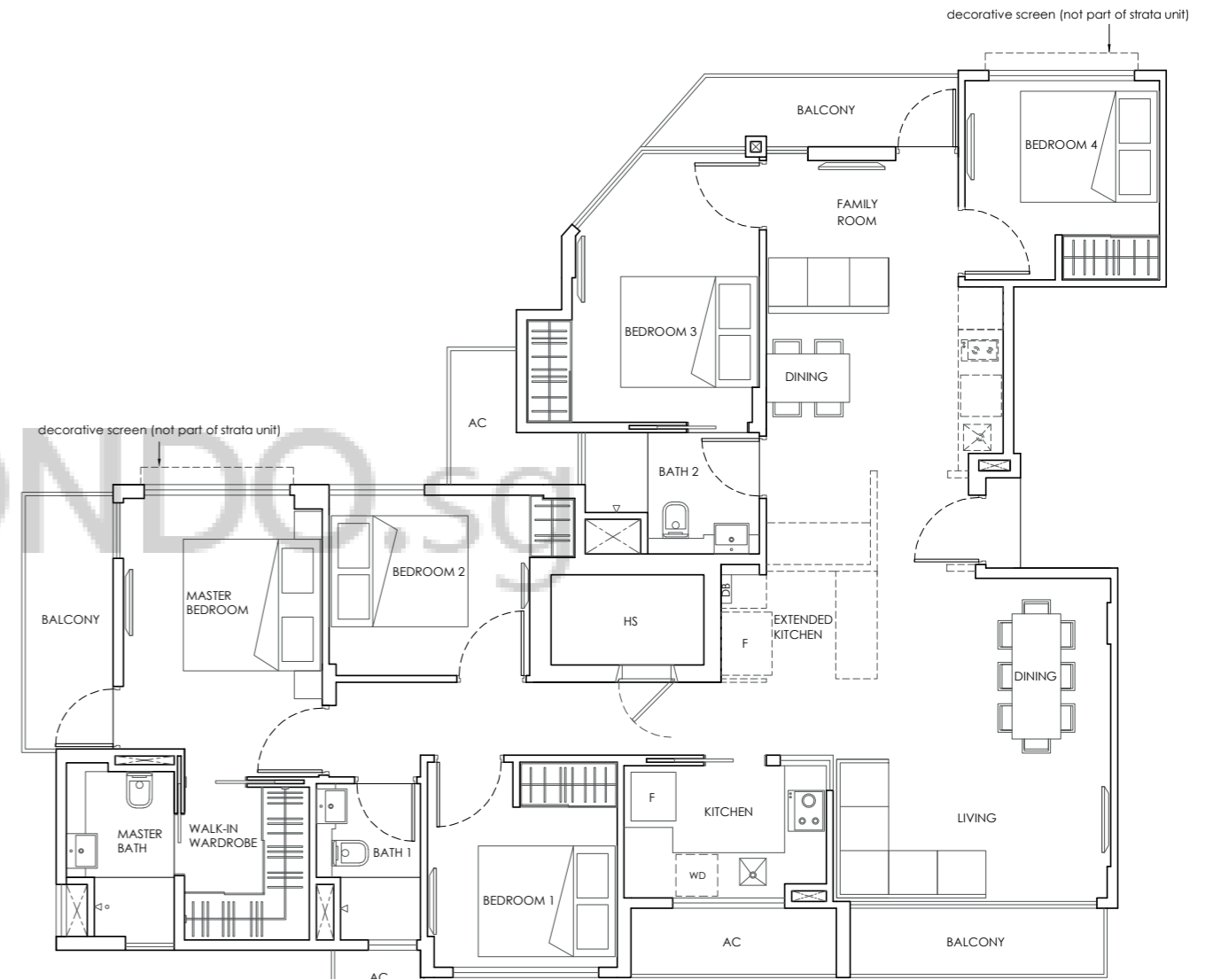
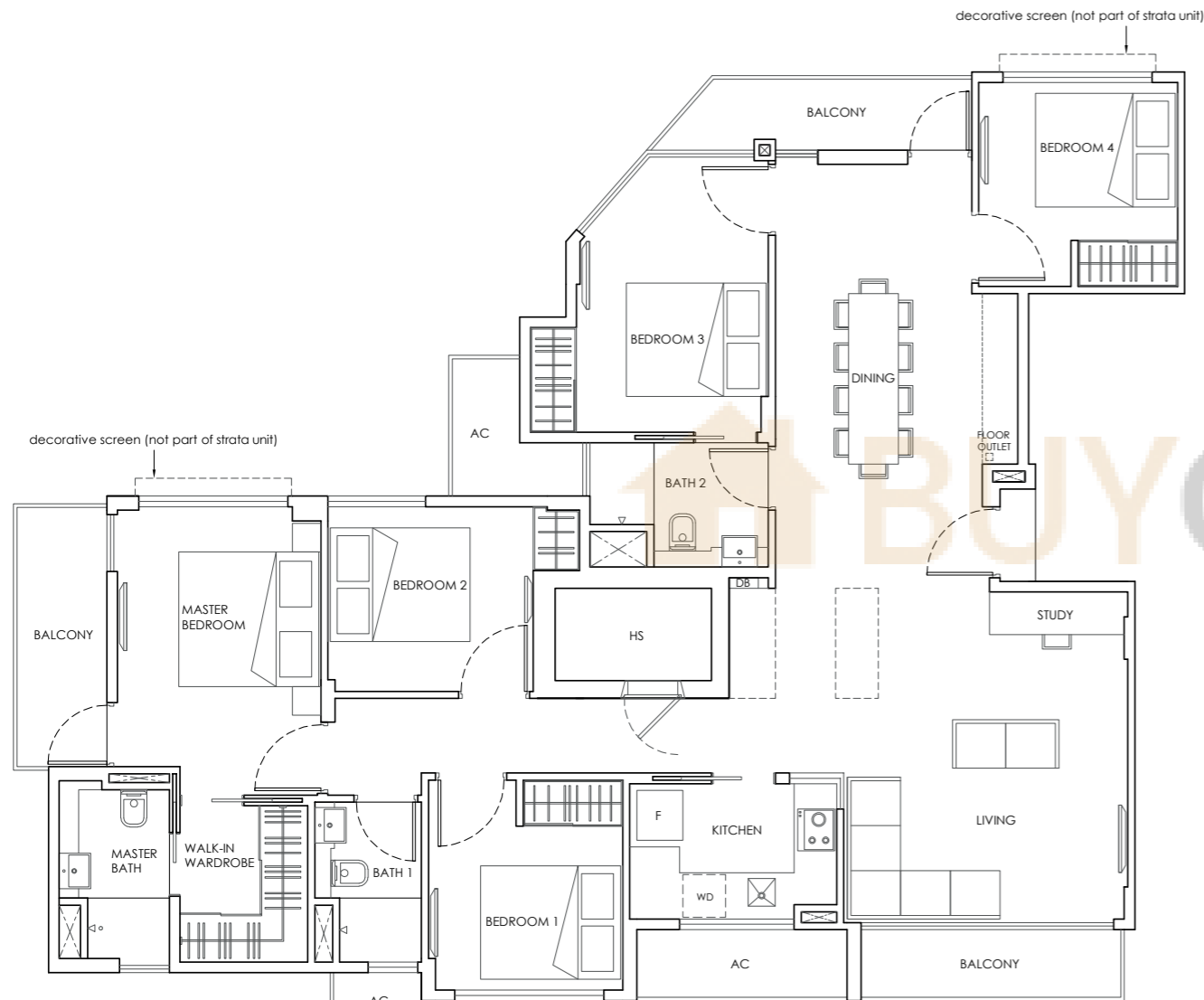
The plans are subject to amendments as may be required or approved by the relevant authorities. Floor areas are estimates only and subject to final survey. Plans are not drawn to scale and do not form part of the contract. The balcony shall not be enclosed unless with the approved balcony screen. For an illustration of the approved balcony screen, please refer to the end of this brochure. The approved balcony screen will be installed at buyer's own cost should the buyer intend to have balcony enclosure.



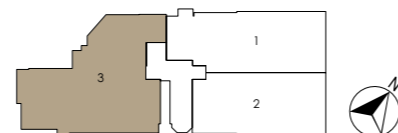
**5-BEDROOM
TYPE D-S**

153 sqm / 1,647 sqft
#04-03, #05-03

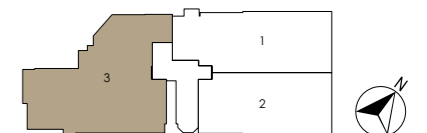
TYPE D-MG SUGGESTED ID OPTION



The plans are subject to amendments as may be required or approved by the relevant authorities. Floor areas are estimates only and subject to final survey. Plans are not drawn to scale and do not form part of the contract. The balcony shall not be enclosed unless with the approved balcony screen. For an illustration of the approved balcony screen, please refer to the end of this brochure. The approved balcony screen will be installed at buyer's own cost should the buyer intend to have balcony enclosure.

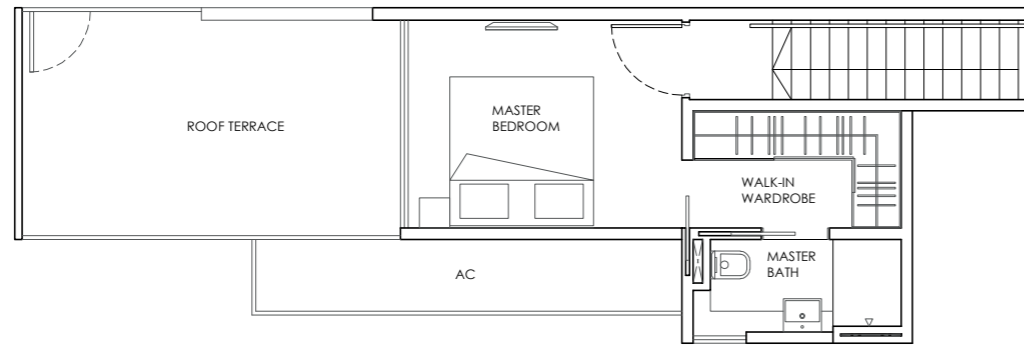


The plans are subject to amendments as may be required or approved by the relevant authorities. Floor areas are estimates only and subject to final survey. Plans are not drawn to scale and do not form part of the contract. The balcony shall not be enclosed unless with the approved balcony screen. For an illustration of the approved balcony screen, please refer to the end of this brochure. The approved balcony screen will be installed at buyer's own cost should the buyer intend to have balcony enclosure.



**PENTHOUSE
4-BEDROOM
TYPE C-PH-S**

142 sqm / 1,528 sqft
#05-02



ATTIC STOREY PLAN



decorative screen (not part of strata unit)

5TH STOREY PLAN



The plans are subject to amendments as may be required or approved by the relevant authorities. Floor areas are estimates only and subject to final survey. Plans are not drawn to scale and do not form part of the contract. The balcony shall not be enclosed unless with the approved balcony screen. For an illustration of the approved balcony screen, please refer to the end of this brochure. The approved balcony screen will be installed at buyer's own cost should the buyer intend to have balcony enclosure.

TYPE C-PH SUGGESTED ID OPTIONS



OPTION TYPE C-PH-K: EXTENDED KITCHEN

decorative screen (not part of strata unit)

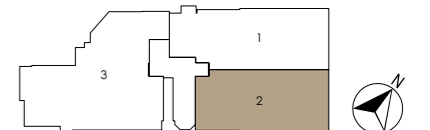
5TH STOREY PLAN



OPTION TYPE C-PH-U: UTILITY ROOM

decorative screen (not part of strata unit)

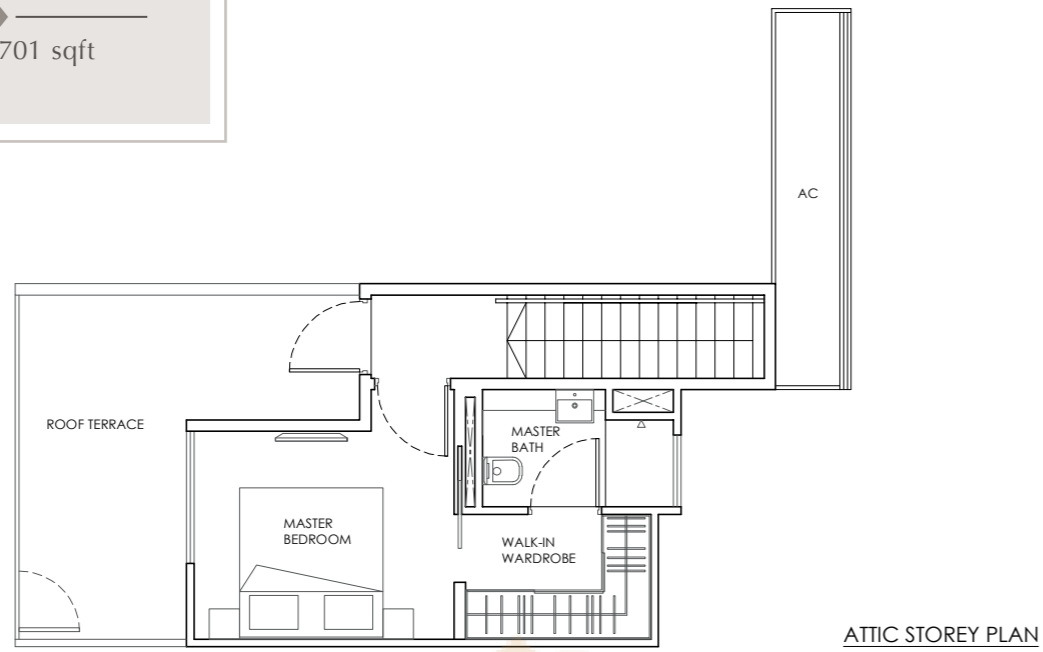
5TH STOREY PLAN



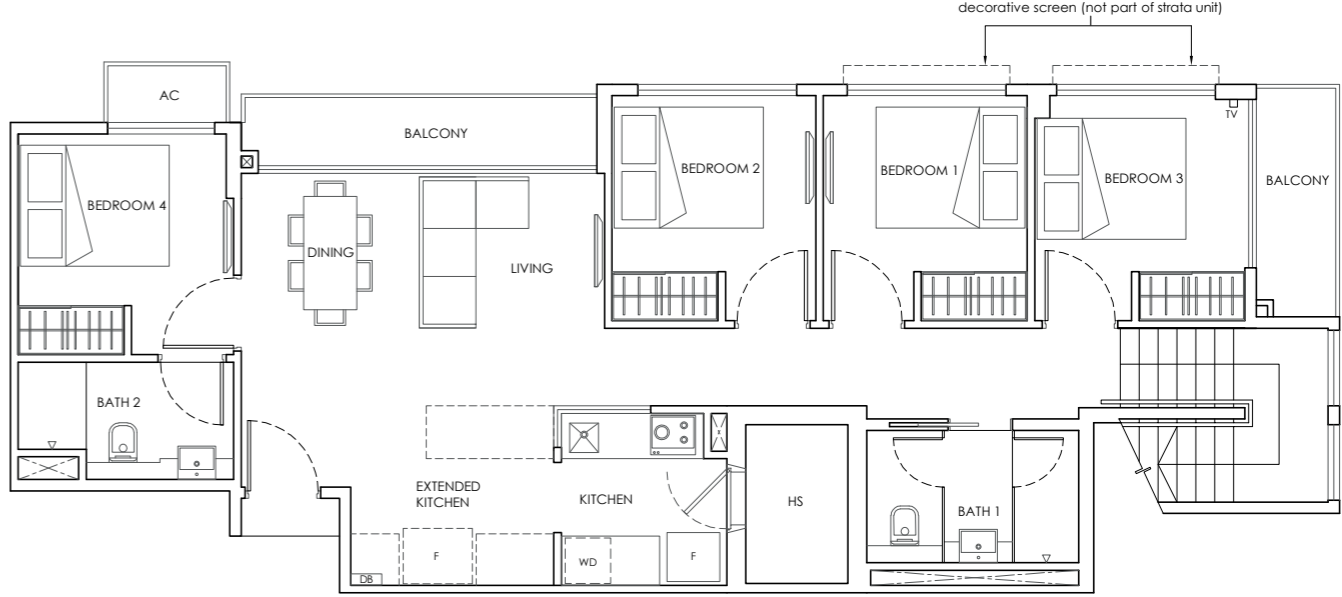
The plans are subject to amendments as may be required or approved by the relevant authorities. Floor areas are estimates only and subject to final survey. Plans are not drawn to scale and do not form part of the contract. The balcony shall not be enclosed unless with the approved balcony screen. For an illustration of the approved balcony screen, please refer to the end of this brochure. The approved balcony screen will be installed at buyer's own cost should the buyer intend to have balcony enclosure.

PENTHOUSE
5-BEDROOM
TYPE D-PH-S

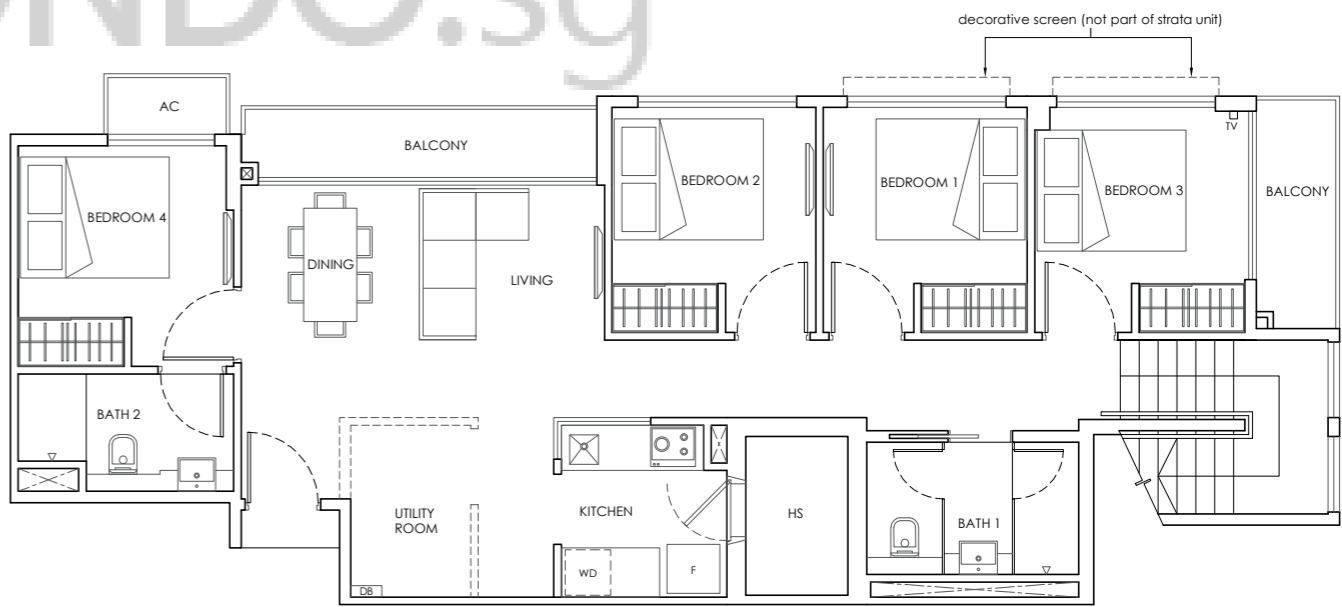
158 sqm / 1,701 sqft
 #05-01



TYPE D-PH SUGGESTED ID OPTIONS

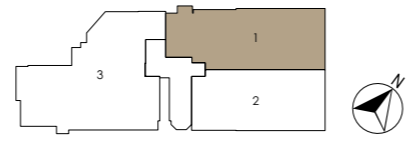


OPTION TYPE D-PH-K: EXTENDED KITCHEN



OPTION TYPE D-PH-U: UTILITY ROOM

The plans are subject to amendments as may be required or approved by the relevant authorities. Floor areas are estimates only and subject to final survey. Plans are not drawn to scale and do not form part of the contract. The balcony shall not be enclosed unless with the approved balcony screen. For an illustration of the approved balcony screen, please refer to the end of this brochure. The approved balcony screen will be installed at buyer's own cost should the buyer intend to have balcony enclosure.



The plans are subject to amendments as may be required or approved by the relevant authorities. Floor areas are estimates only and subject to final survey. Plans are not drawn to scale and do not form part of the contract. The balcony shall not be enclosed unless with the approved balcony screen. For an illustration of the approved balcony screen, please refer to the end of this brochure. The approved balcony screen will be installed at buyer's own cost should the buyer intend to have balcony enclosure.

