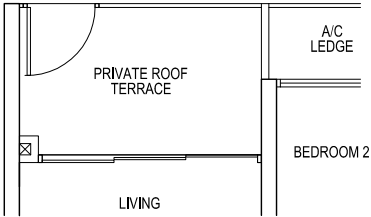


TYPE H BS1p

2-BEDROOM + STUDY

Total Area = 77 sqm

#04-06

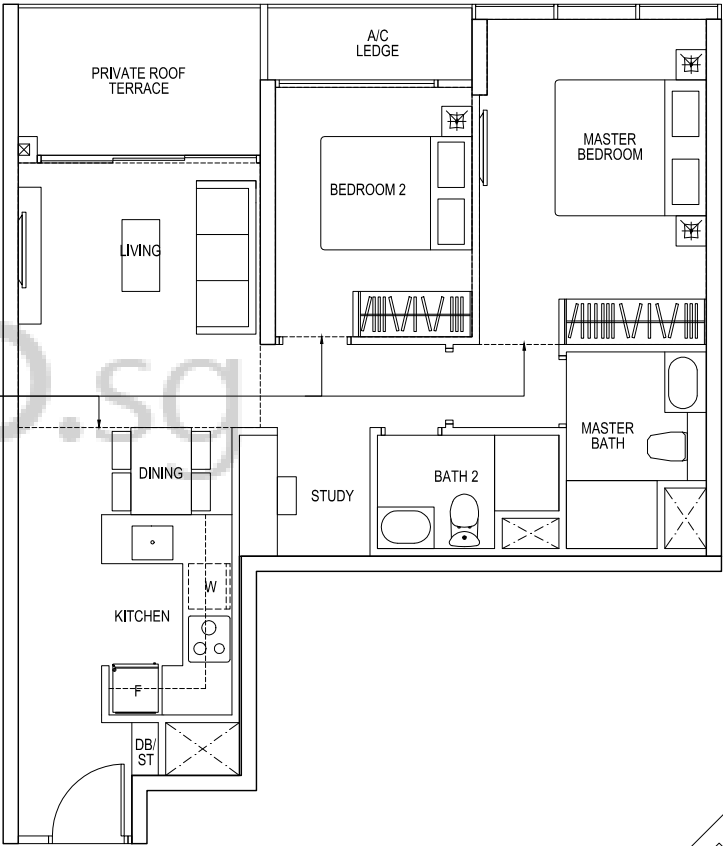


TYPE H BS1r

2-BEDROOM + STUDY

Total Area = 113 sqm
(Including Void Area of 36 sqm)

#18-06 HIGH CEILING



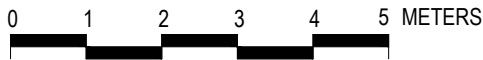
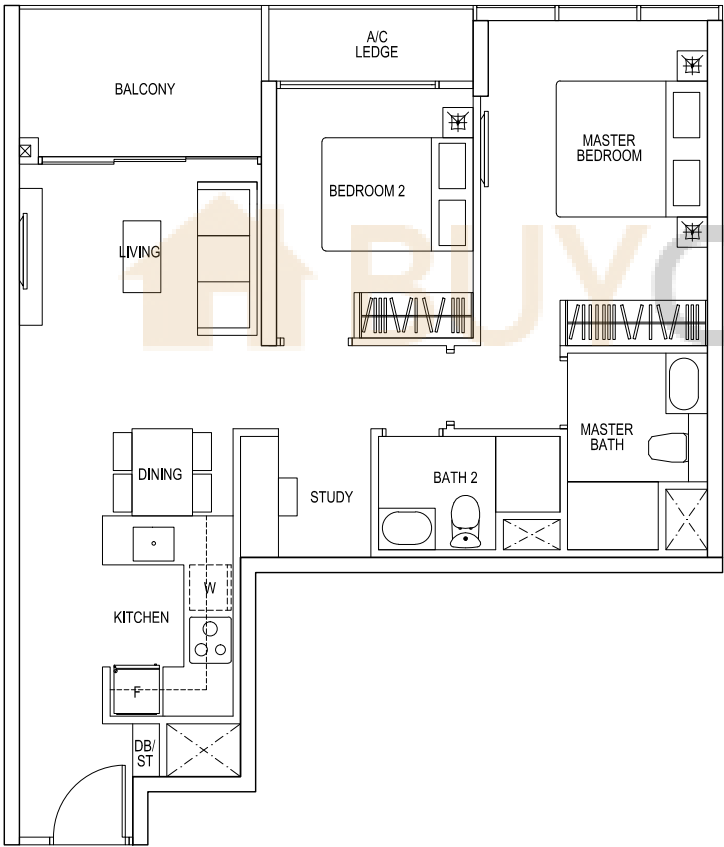
dotted line denotes void area
of 36 sqm above living and
bedrooms

TYPE H BS1

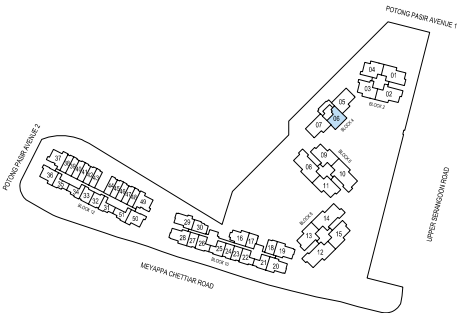
2-BEDROOM + STUDY

Total Area = 77 sqm

#05-06 to #17-06



Area includes A/C ledge, balcony, private roof terrace and void area. Some units are mirror images of the apartment plans shown in the brochure. Please refer to the key plans for orientation. The plans are subject to change as may be approved by the relevant authorities. All floor areas are approximate measurements only and are subject to government resurvey. Abbreviation: A/C ledge (Aircon Ledge), Private Roof Terrace, ST (Store), DB (Distribution Board), F (Fridge), W (Washing Machine).



KEY PLAN

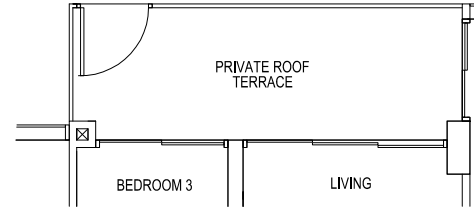


TYPE H C1p

3-BEDROOM

Total Area = 87 sqm

#04-04

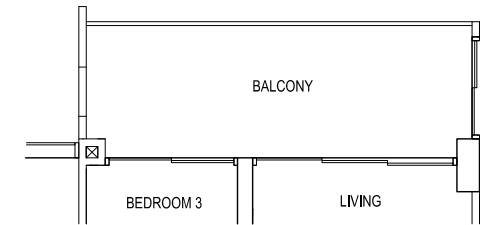
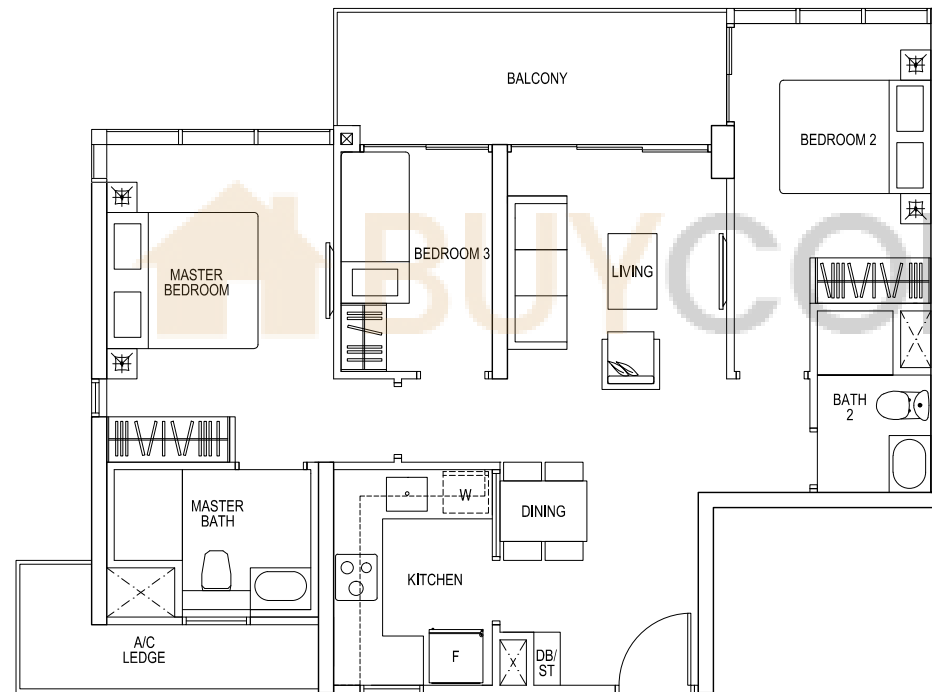


TYPE H C1

3-BEDROOM

Total Area = 87 sqm

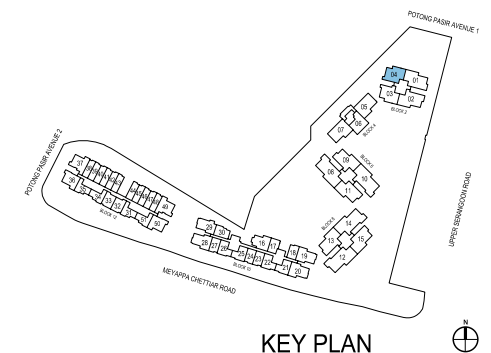
#05-04, #07-04
#09-04, #11-04
#13-04, #15-04
#17-04



#06-04, #08-04
#10-04, #12-04
#14-04, #16-04



Area includes A/C ledge, balcony, private roof terrace and void area. Some units are mirror images of the apartment plans shown in the brochure. Please refer to the key plans for orientation. The plans are subject to change as may be approved by the relevant authorities. All floor areas are approximate measurements only and are subject to government resurvey. Abbreviation: A/C ledge (Aircon Ledge), Private Roof Terrace, ST (Store), DB (Distribution Board), F (Fridge), W (Washing Machine).



KEY PLAN

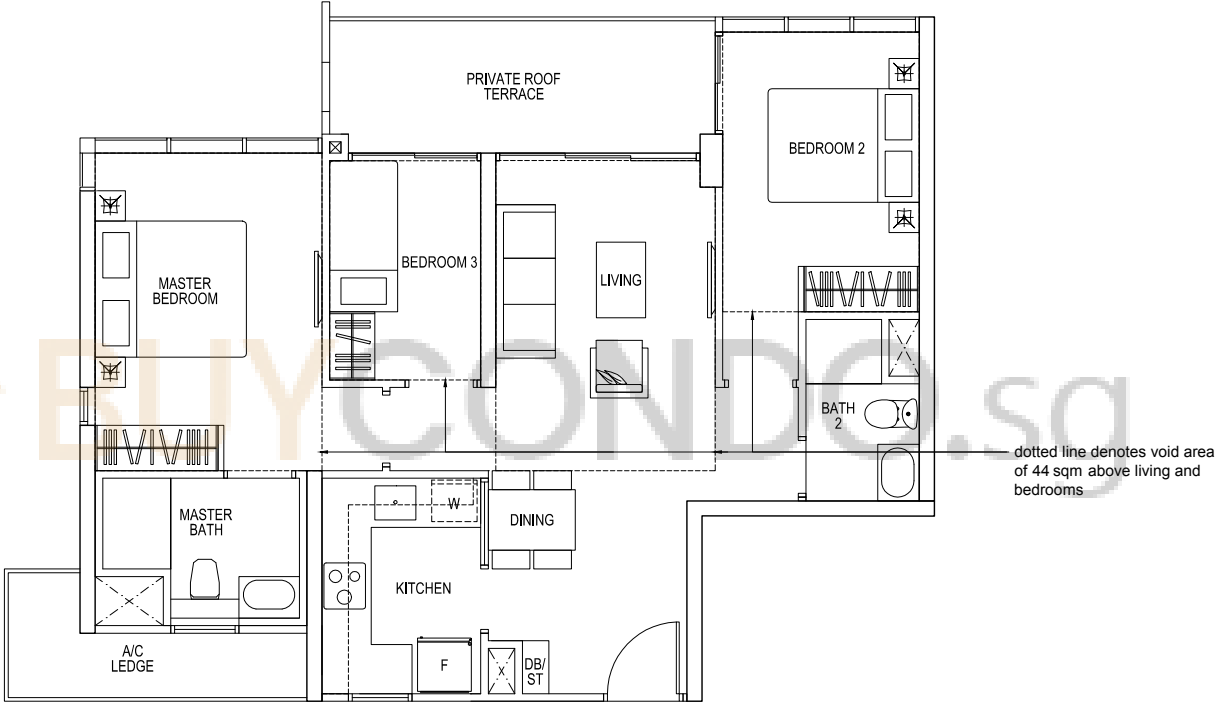


TYPE H C1r

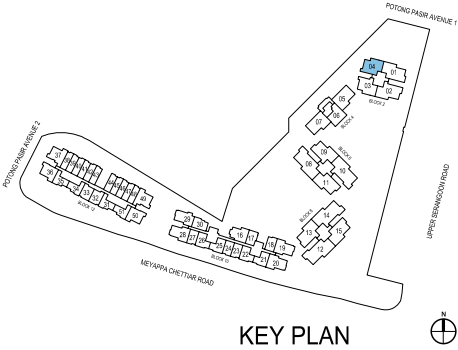
3-BEDROOM

Total Area = 131 sqm
(Including Void Area of 44 sqm)

#18-04 HIGH CEILING



Area includes A/C ledge, balcony, private roof terrace and void area. Some units are mirror images of the apartment plans shown in the brochure. Please refer to the key plans for orientation. The plans are subject to change as may be approved by the relevant authorities. All floor areas are approximate measurements only and are subject to government resurvey. Abbreviation: A/C ledge (Aircon Ledge), Private Roof Terrace, ST (Store), DB (Distribution Board), F (Fridge), W (Washing Machine).

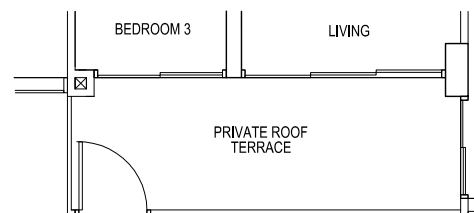


TYPE H C1ap

3-BEDROOM

Total Area = 90 sqm

#04-03



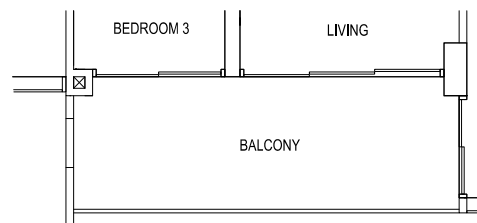
TYPE H C1a

3-BEDROOM

Total Area = 90 sqm

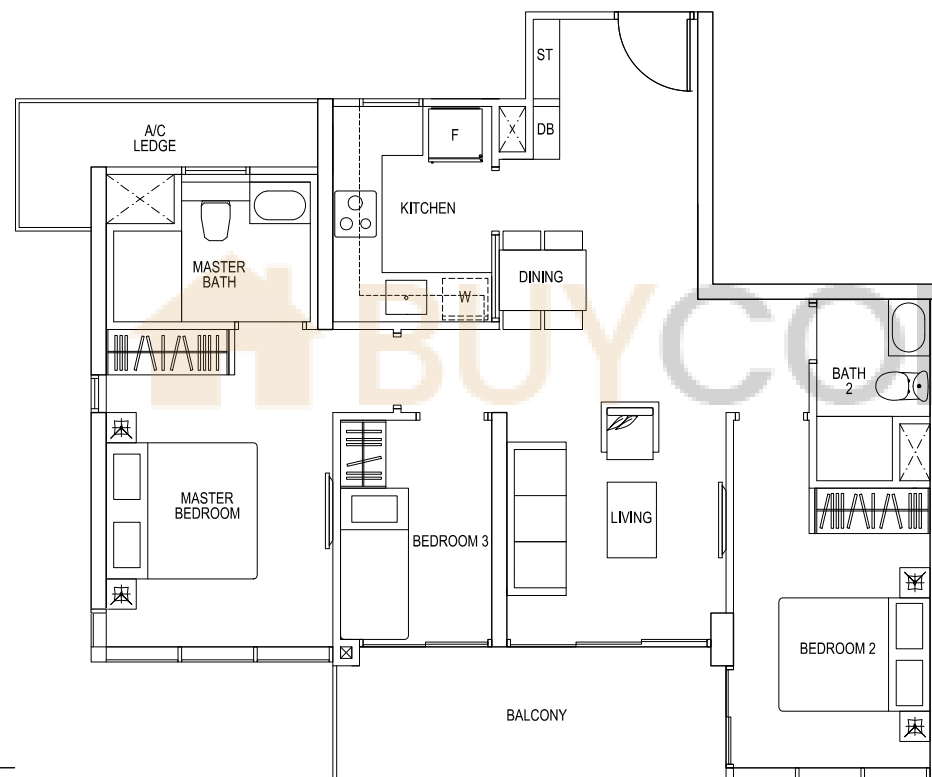
#05-03, #07-03, #09-03, #11-03

#13-03, #15-03, #17-03



#06-03, #08-03, #10-03, #12-03

#14-03, #16-03

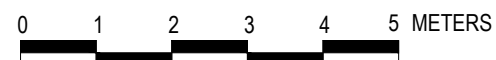
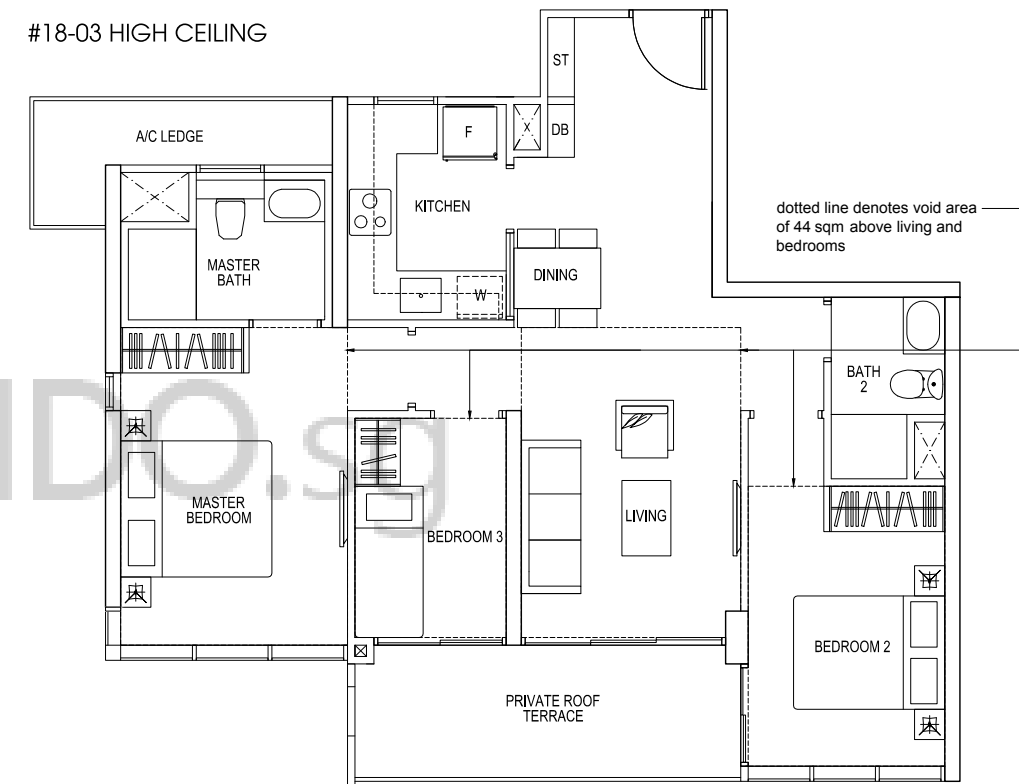


TYPE H C1ar

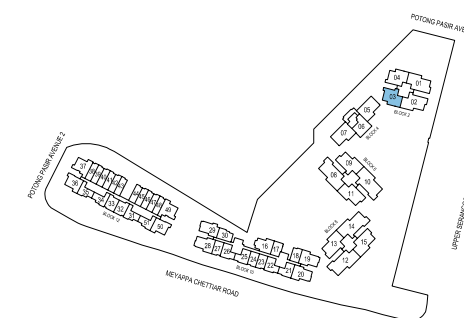
3-BEDROOM

Total Area = 134 sqm
(Including Void Area of 44 sqm)

#18-03 HIGH CEILING



Area includes A/C ledge, balcony, private roof terrace and void area. Some units are mirror images of the apartment plans shown in the brochure. Please refer to the key plans for orientation. The plans are subject to change as may be approved by the relevant authorities. All floor areas are approximate measurements only and are subject to government resurvey. Abbreviation: A/C ledge (Aircon Ledge), Private Roof Terrace, ST (Store), DB (Distribution Board), F (Fridge), W (Washing Machine).



KEY PLAN

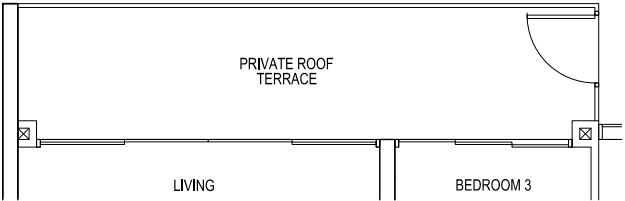


TYPE H C2p1

3-BEDROOM

Total Area = 107 sqm

#04-15 (MIRROR)

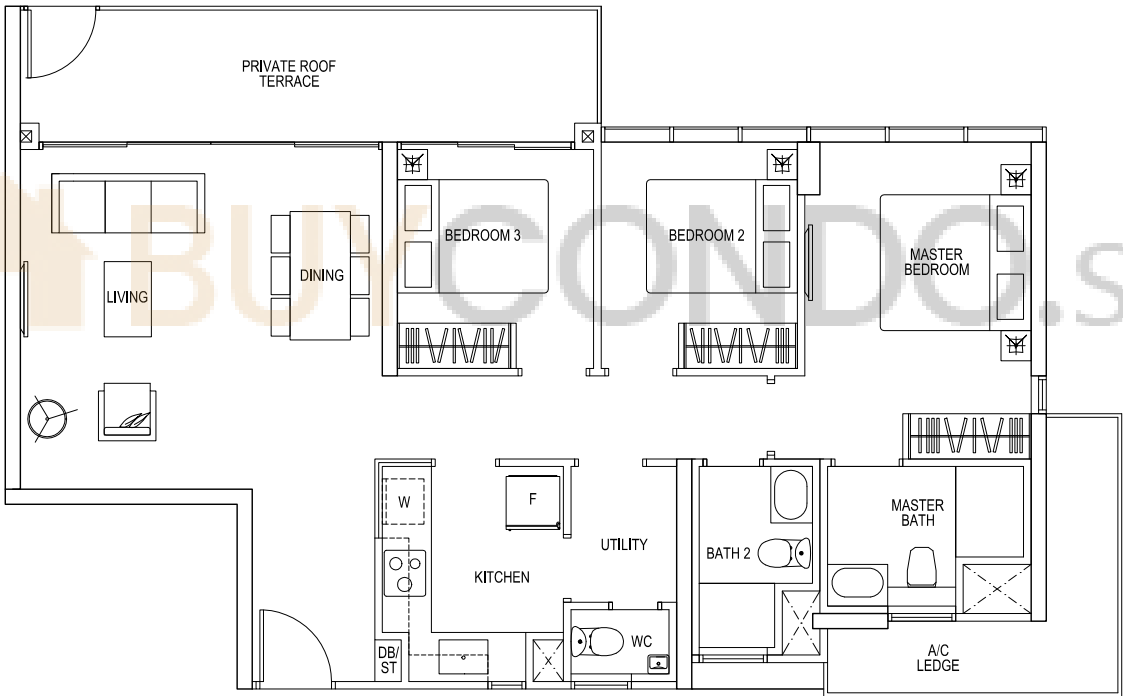


TYPE H C2p

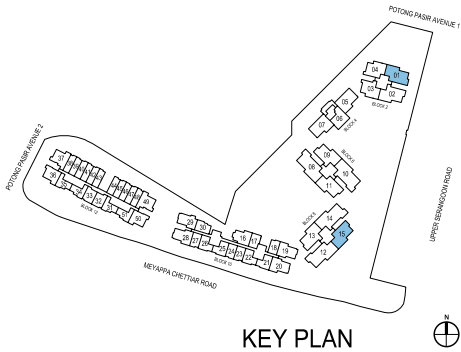
3-BEDROOM

Total Area = 107 sqm

#04-01



Area includes A/C ledge, balcony, private roof terrace and void area. Some units are mirror images of the apartment plans shown in the brochure. Please refer to the key plans for orientation. The plans are subject to change as may be approved by the relevant authorities. All floor areas are approximate measurements only and are subject to government resurvey. Abbreviation: A/C ledge (Aircon Ledge), Private Roof Terrace, ST (Store), DB (Distribution Board), F (Fridge), W (Washing Machine).



TYPE H C2

3-BEDROOM

Total Area = 107 sqm

#06-01, #08-01, #10-01, #12-01,
#14-01, #16-01

#06-11, #10-11, #14-11 (MIRROR)

#06-15, #10-15, #14-15 (MIRROR)

TYPE H C2

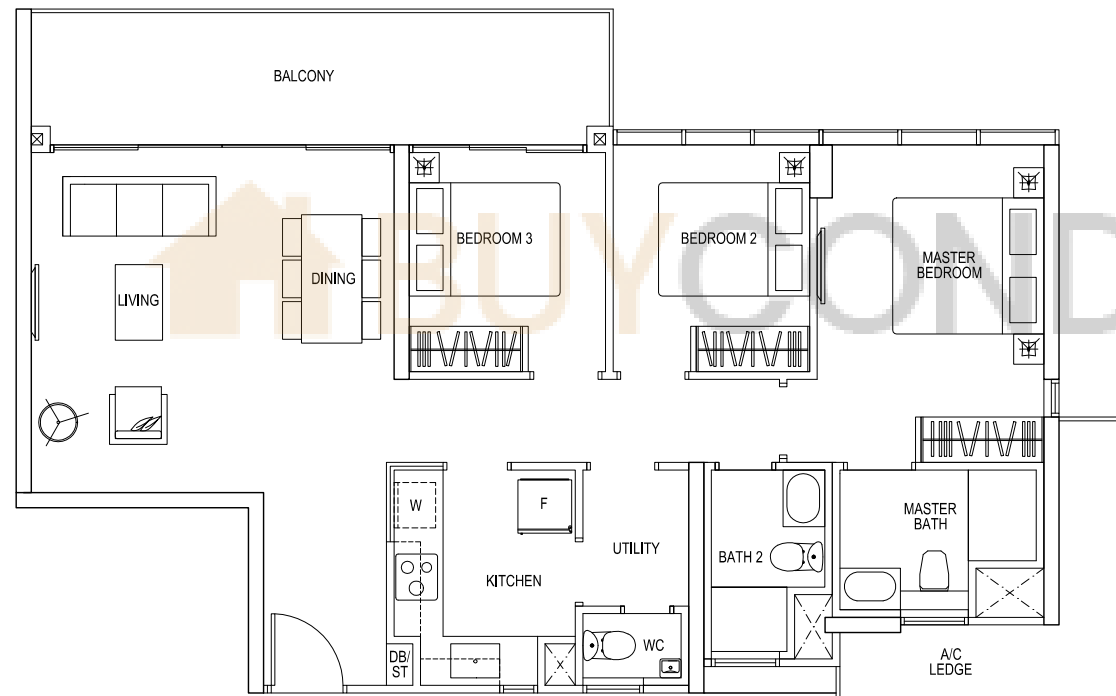
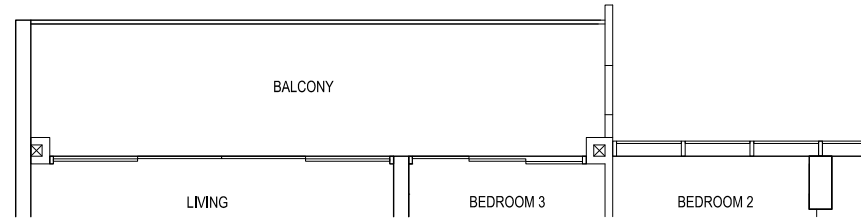
3-BEDROOM

Total Area = 107 sqm

#05-01, #07-01, #09-01, #11-01,
#13-01, #15-01, #17-01

#07-11, #11-11, #15-11 (MIRROR)

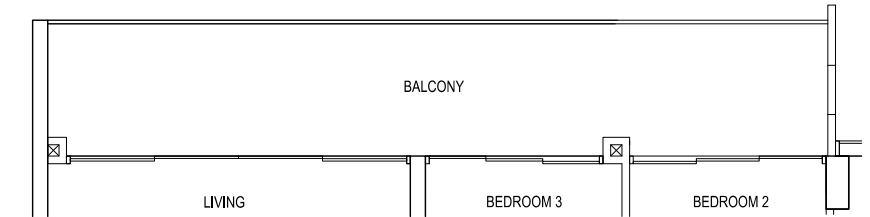
#05-15, #07-15, #11-15,
#15-15 (MIRROR)



TYPE H C2(1)

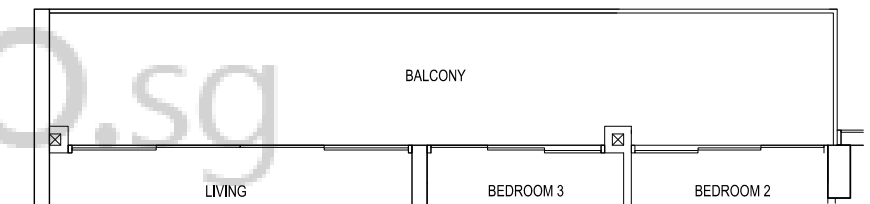
3-BEDROOM

Total Area = 112 sqm



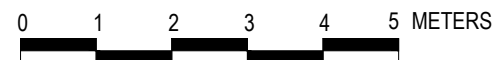
#08-11, #12-11, #16-11 (MIRROR)

#08-15, #12-15, #16-15 (MIRROR)

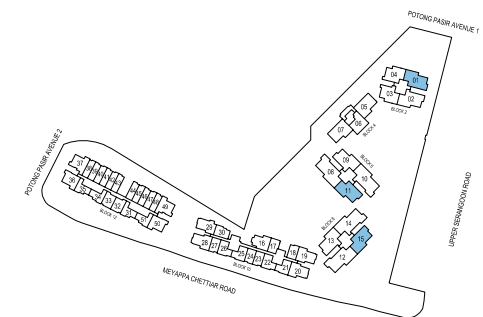


#09-11, #13-11, #17-11 (MIRROR)

#09-15, #13-15, #17-15 (MIRROR)



Area includes A/C ledge, balcony, private roof terrace and void area. Some units are mirror images of the apartment plans shown in the brochure. Please refer to the key plans for orientation. The plans are subject to change as may be approved by the relevant authorities. All floor areas are approximate measurements only and are subject to government resurvey. Abbreviation: A/C ledge (Aircon Ledge), Private Roof Terrace, ST (Store), DB (Distribution Board), F (Fridge), W (Washing Machine).



KEY PLAN

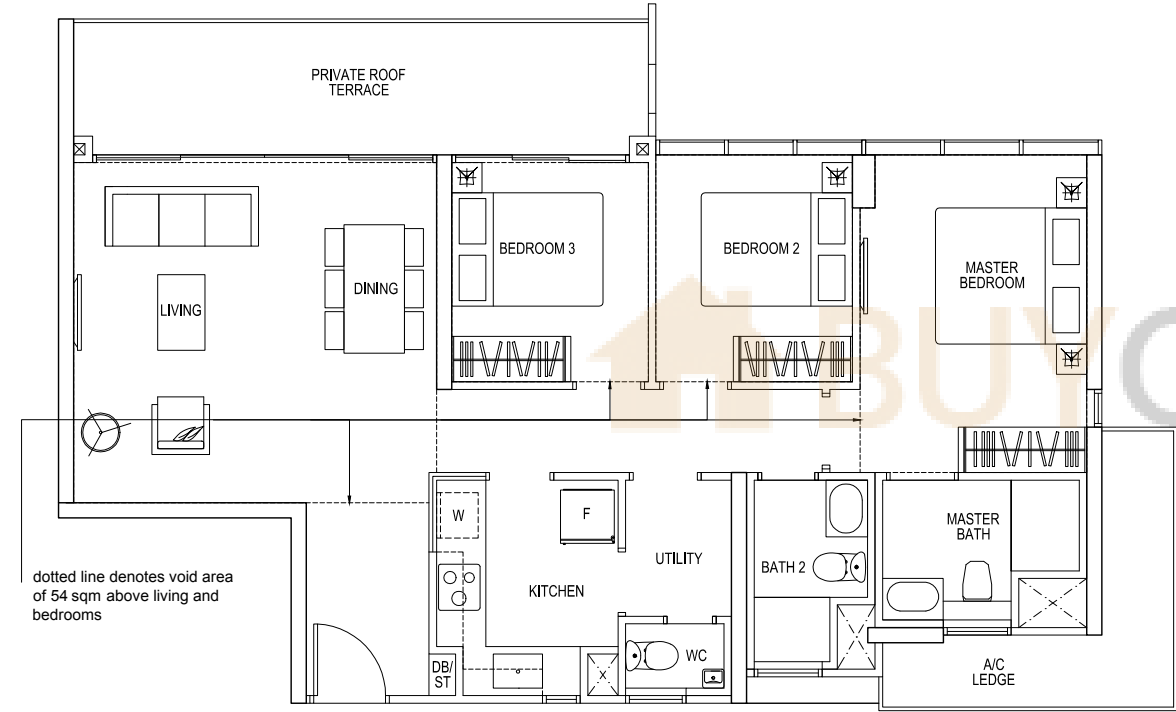


TYPE H C2r

3-BEDROOM

Total Area = 161 sqm
(Including Void Area of 54 sqm)

#18-01 HIGH CEILING



Area includes A/C ledge, balcony, private roof terrace and void area. Some units are mirror images of the apartment plans shown in the brochure. Please refer to the key plans for orientation. The plans are subject to change as may be approved by the relevant authorities. All floor areas are approximate measurements only and are subject to government resurvey. Abbreviation: A/C ledge (Aircon Ledge), Private Roof Terrace, ST (Store), DB (Distribution Board), F (Fridge), W (Washing Machine).

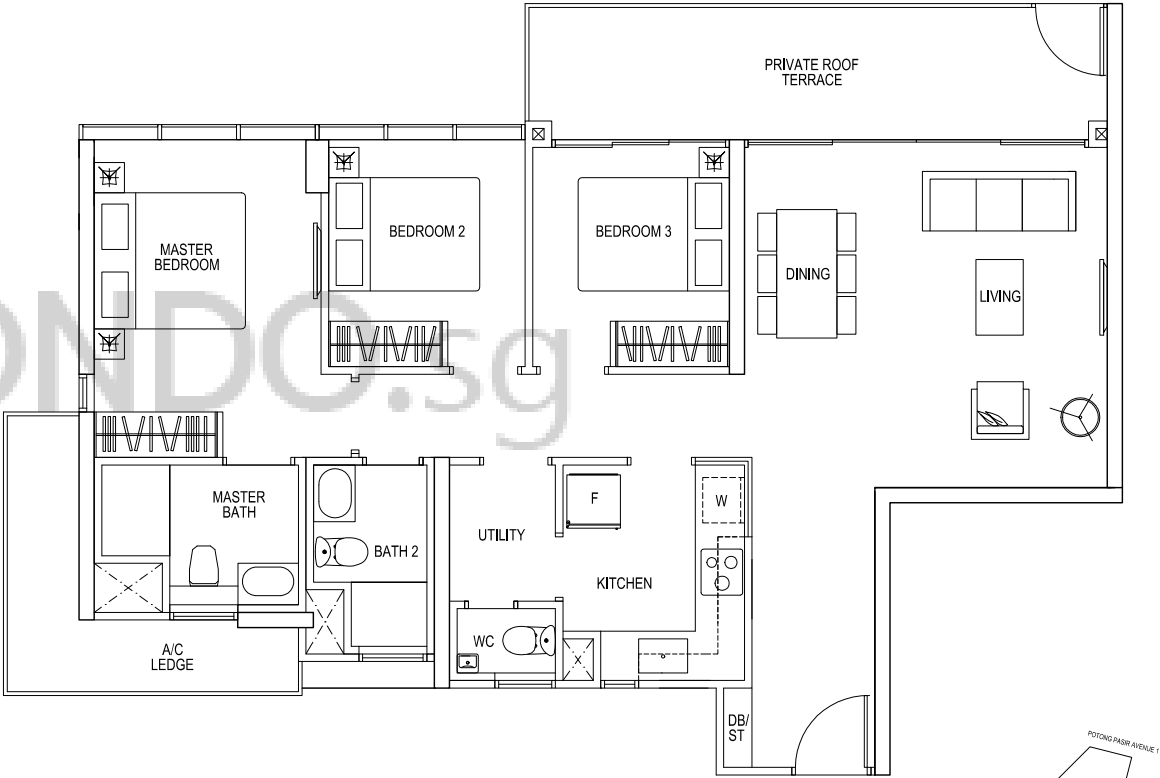
TYPE H C2ap

3-BEDROOM

Total Area = 110 sqm

#04-02

#04-13



TYPE H C2a

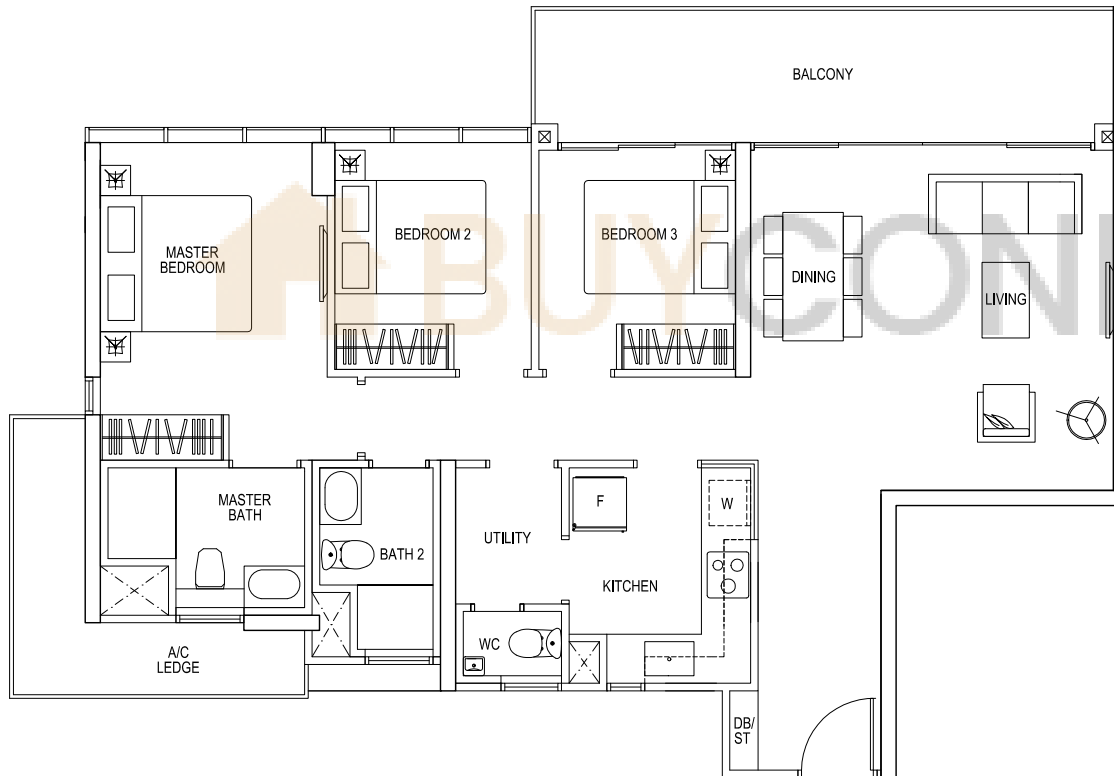
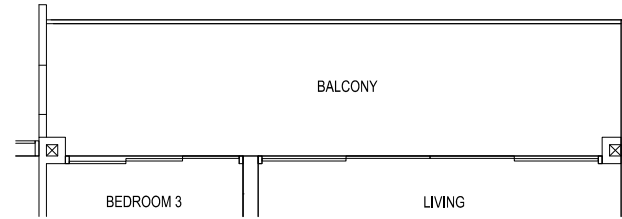
3-BEDROOM

Total Area = 110 sqm

#06-02, #08-02, #10-02, #12-02,
#14-02, #16-02

#06-09, #10-09, #14-09

#06-13, #10-13, #14-13



#05-02, #07-02, #09-02, #11-02,
#13-02, #15-02, #17-02

#07-09, #11-09, #15-09

#05-13, #07-13, #11-13, #15-13

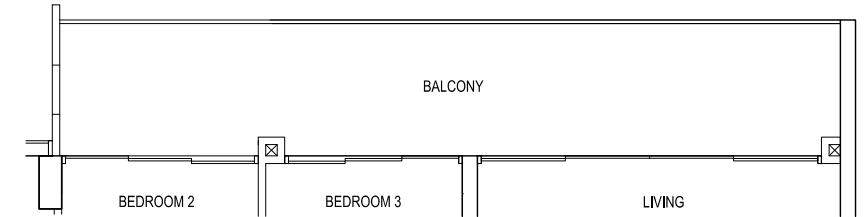


Area includes A/C ledge, balcony, private roof terrace and void area. Some units are mirror images of the apartment plans shown in the brochure. Please refer to the key plans for orientation. The plans are subject to change as may be approved by the relevant authorities. All floor areas are approximate measurements only and are subject to government resurvey. Abbreviation: A/C ledge (Aircon Ledge), Private Roof Terrace, ST (Store), DB (Distribution Board), F (Fridge), W (Washing Machine).

TYPE H C2a(1)

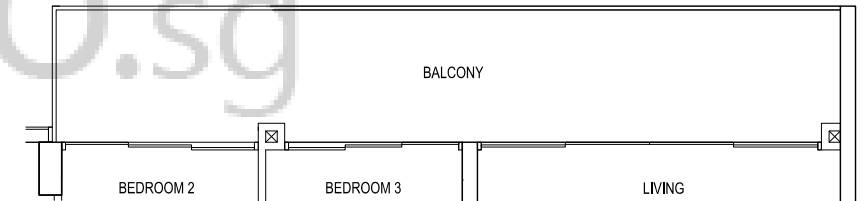
3-BEDROOM

Total Area = 114 sqm



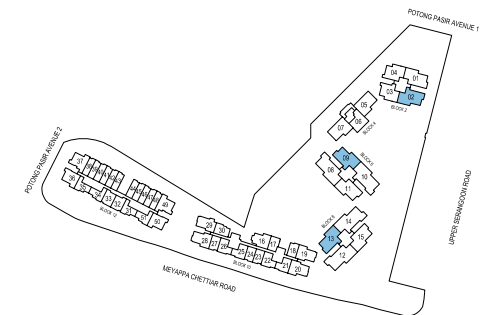
#08-09, #12-09, #16-09

#08-13, #12-13, #16-13



#09-09, #13-09, #17-09

#09-13, #13-13, #17-13



KEY PLAN

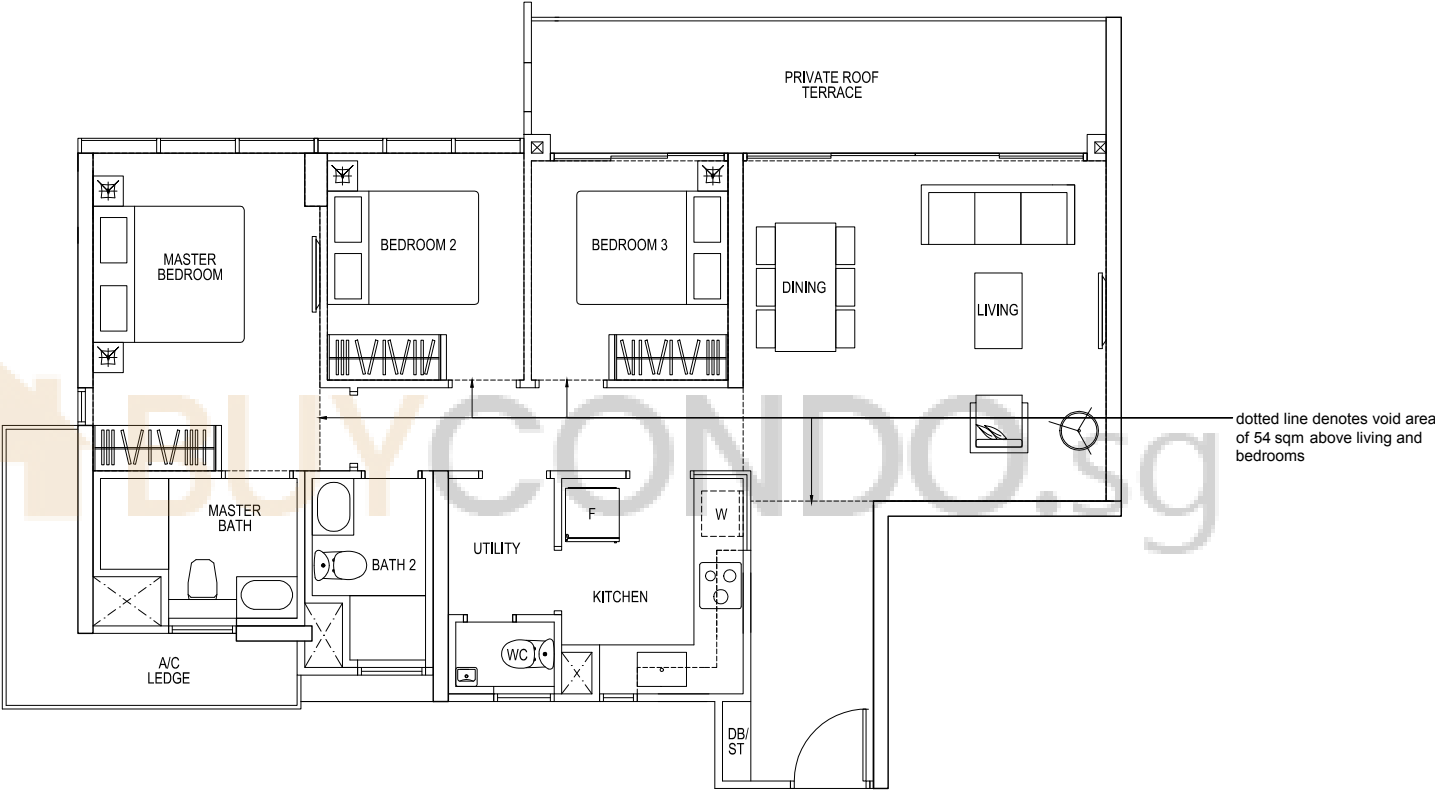


TYPE H C2ar

3-BEDROOM

Total Area = 164 sqm
(Including Void Area of 54 sqm)

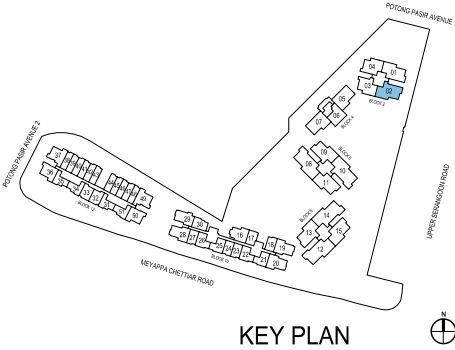
#18-02 HIGH CEILING



dotted line denotes void area
of 54 sqm above living and
bedrooms



Area includes A/C ledge, balcony, private roof terrace and void area. Some units are mirror images of the apartment plans shown in the brochure. Please refer to the key plans for orientation. The plans are subject to change as may be approved by the relevant authorities. All floor areas are approximate measurements only and are subject to government resurvey. Abbreviation: A/C ledge (Aircon Ledge), Private Roof Terrace, ST (Store), DB (Distribution Board), F (Fridge), W (Washing Machine).



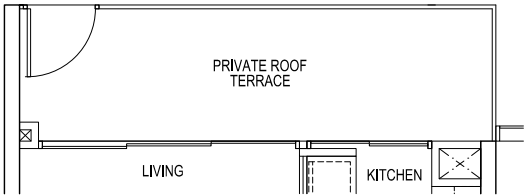
TYPE H C3p

3-BEDROOM

Total Area = 103 sqm

#04-05 (MIRROR)

#04-07



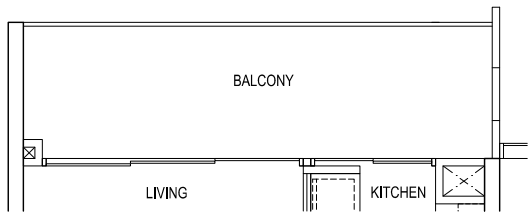
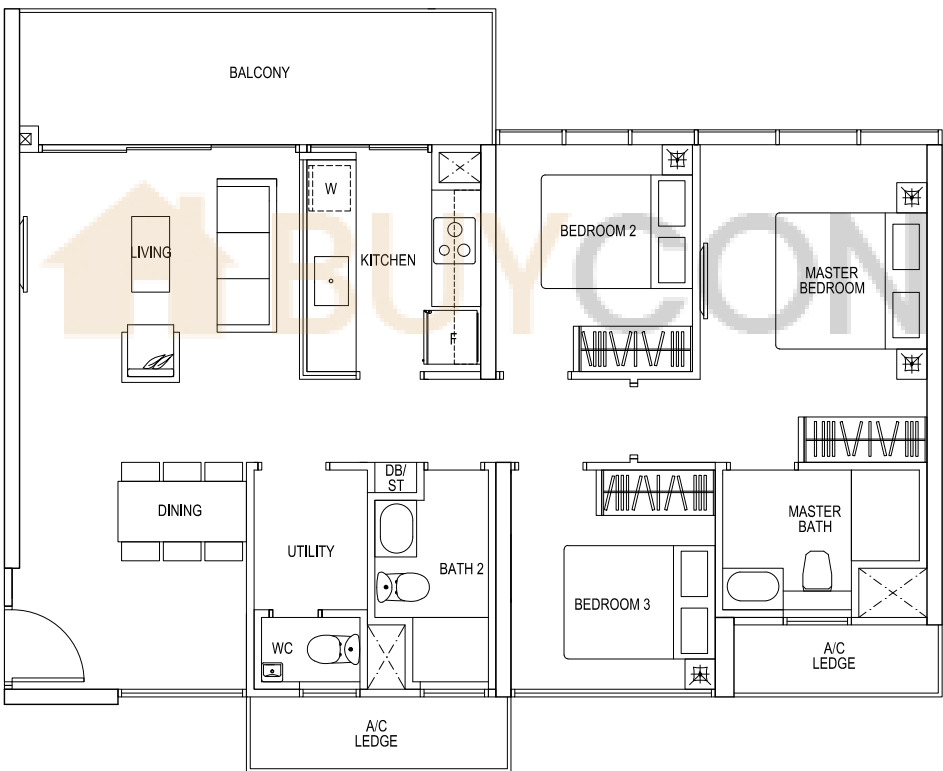
TYPE H C3

3-BEDROOM

Total Area = 103 sqm

#05-05, #07-05, #09-05, #11-05, #13-05,
#15-05, #17-05 (MIRROR)

#05-07, #07-07, #09-07, #11-07, #13-07,
#15-07, #17-07

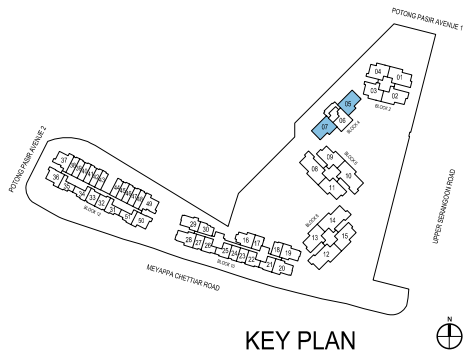


#06-05, #08-05, #10-05, #12-05, #14-05,
#16-05 (MIRROR)

#06-07, #08-07, #10-07, #12-07, #14-07,
#16-07



Area includes A/C ledge, balcony, private roof terrace and void area. Some units are mirror images of the apartment plans shown in the brochure. Please refer to the key plans for orientation. The plans are subject to change as may be approved by the relevant authorities. All floor areas are approximate measurements only and are subject to government resurvey. Abbreviation: A/C ledge (Aircon Ledge), Private Roof Terrace, ST (Store), DB (Distribution Board), F (Fridge), W (Washing Machine).



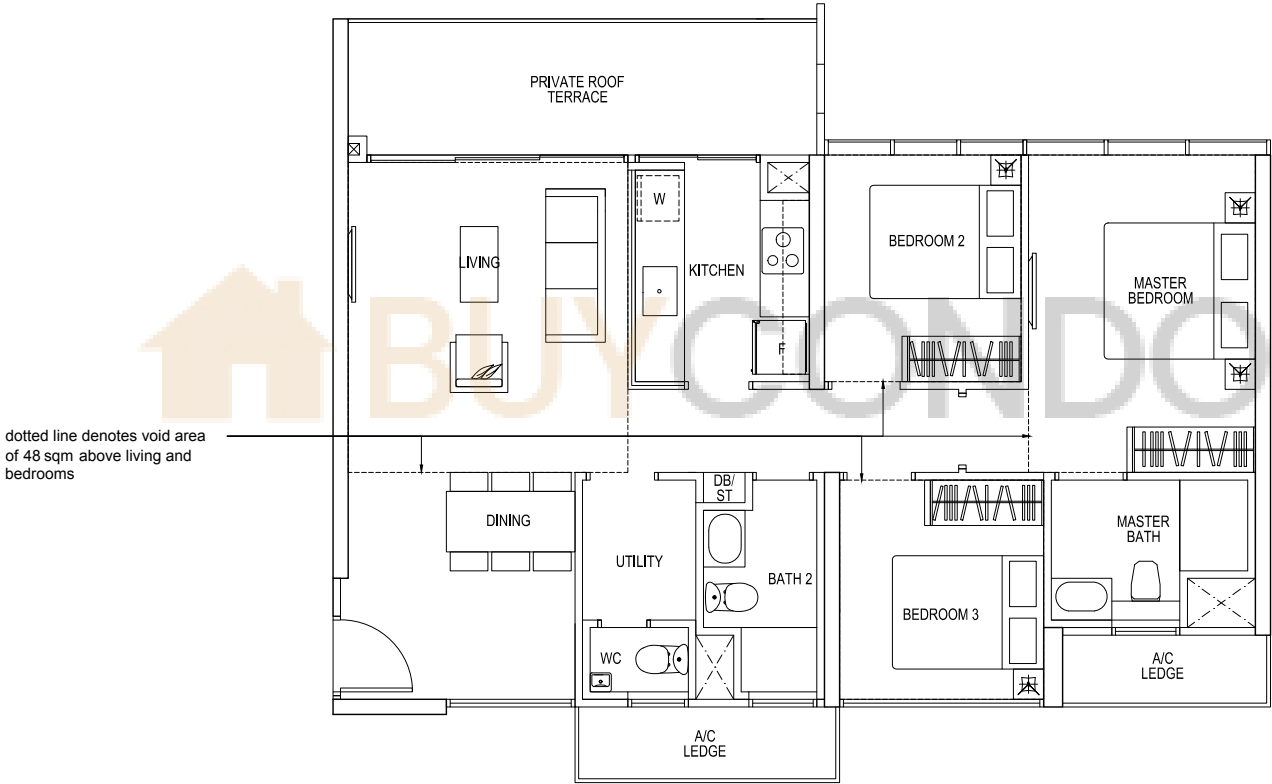
TYPE H C3r

3-BEDROOM

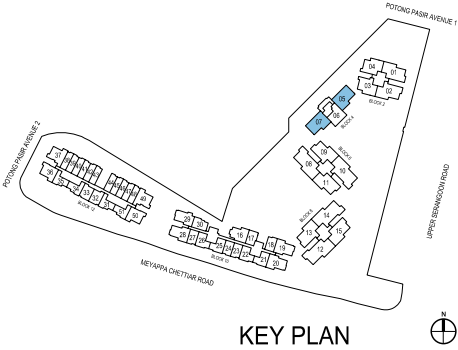
Total Area = 151 sqm
(Including Void Area of 48 sqm)

#18-05 HIGH CEILING (MIRROR)

#18-07 HIGH CEILING



Area includes A/C ledge, balcony, private roof terrace and void area. Some units are mirror images of the apartment plans shown in the brochure. Please refer to the key plans for orientation. The plans are subject to change as may be approved by the relevant authorities. All floor areas are approximate measurements only and are subject to government resurvey. Abbreviation: A/C ledge (Aircon Ledge), Private Roof Terrace, ST (Store), DB (Distribution Board), F (Fridge), W (Washing Machine).

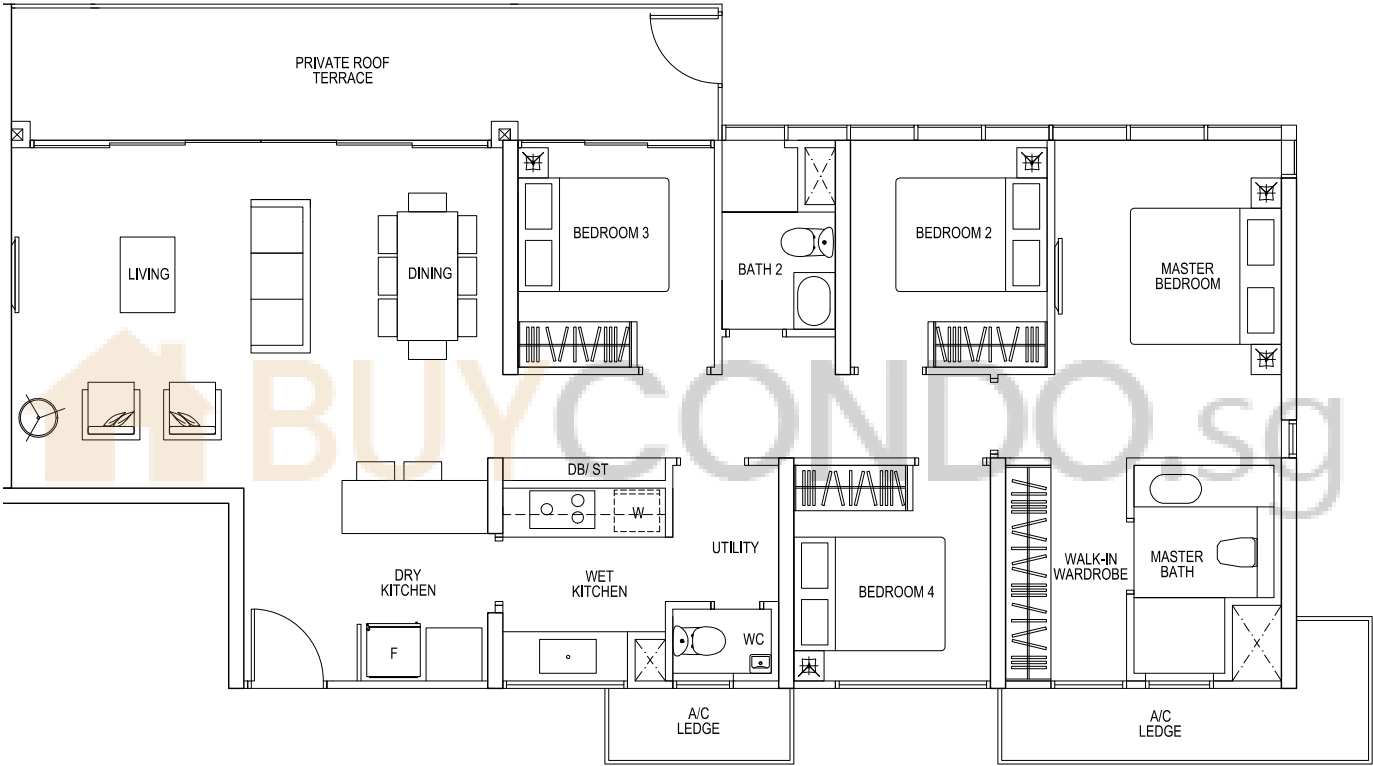


TYPE H D1p

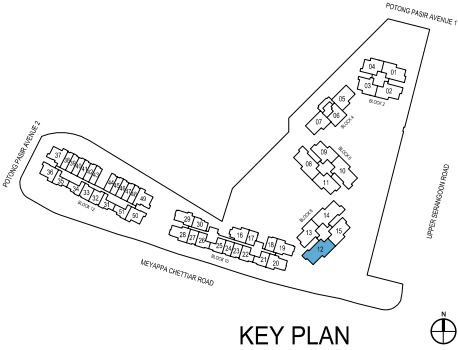
4-BEDROOM

Total Area = 140 sqm

#04-12



Area includes A/C ledge, balcony, private roof terrace and void area. Some units are mirror images of the apartment plans shown in the brochure. Please refer to the key plans for orientation. The plans are subject to change as may be approved by the relevant authorities. All floor areas are approximate measurements only and are subject to government resurvey. Abbreviation: A/C ledge (Aircon Ledge), Private Roof Terrace, ST (Store), DB (Distribution Board), F (Fridge), W (Washing Machine).



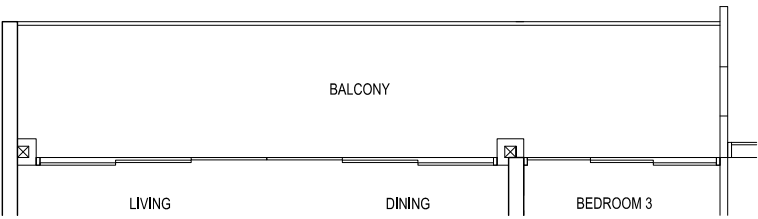
TYPE H D1

4-BEDROOM

Total Area = 140 sqm

#06-08, #10-08, #14-08
#06-12, #10-12, #14-12

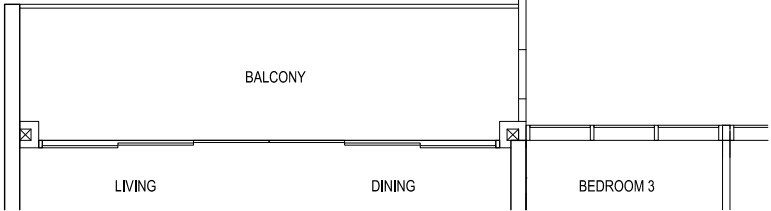
#07-08, #11-08,
#15-08
#05-12, #07-12,
#11-12, #15-12



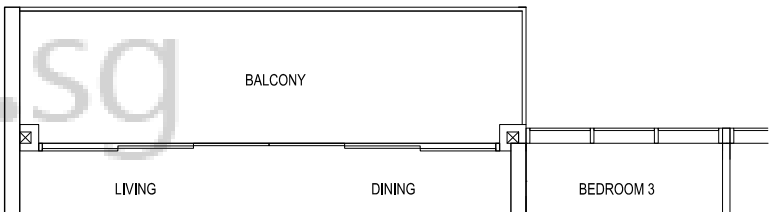
TYPE H D1(1)

4-BEDROOM

Total Area = 136 sqm



#08-08, #12-08, #16-08
#08-12, #12-12, #16-12



#09-08, #13-08, #17-08
#09-12, #13-12, #17-12



KEY PLAN



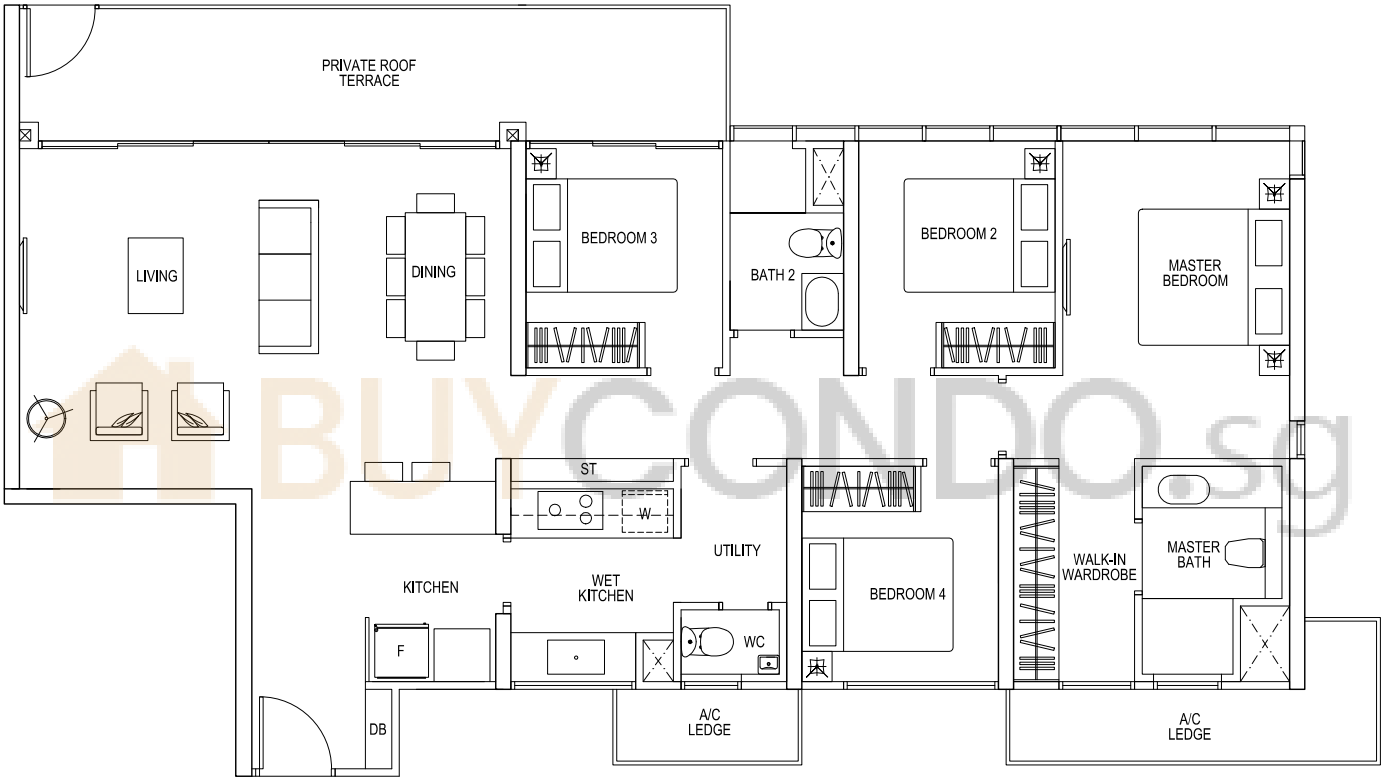
Area includes A/C ledge, balcony, private roof terrace and void area. Some units are mirror images of the apartment plans shown in the brochure. Please refer to the key plans for orientation. The plans are subject to change as may be approved by the relevant authorities. All floor areas are approximate measurements only and are subject to government resurvey. Abbreviation: A/C ledge (Aircon Ledge), Private Roof Terrace, ST (Store), DB (Distribution Board), F (Fridge), W (Washing Machine).

TYPE H D1ap

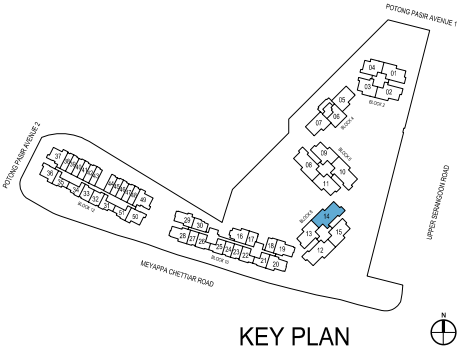
4-BEDROOM

Total Area = 142 sqm

#04-14



Area includes A/C ledge, balcony, private roof terrace and void area. Some units are mirror images of the apartment plans shown in the brochure. Please refer to the key plans for orientation. The plans are subject to change as may be approved by the relevant authorities. All floor areas are approximate measurements only and are subject to government resurvey. Abbreviation: A/C ledge (Aircon Ledge), Private Roof Terrace, ST (Store), DB (Distribution Board), F (Fridge), W (Washing Machine).



TYPE H D1a

4-BEDROOM

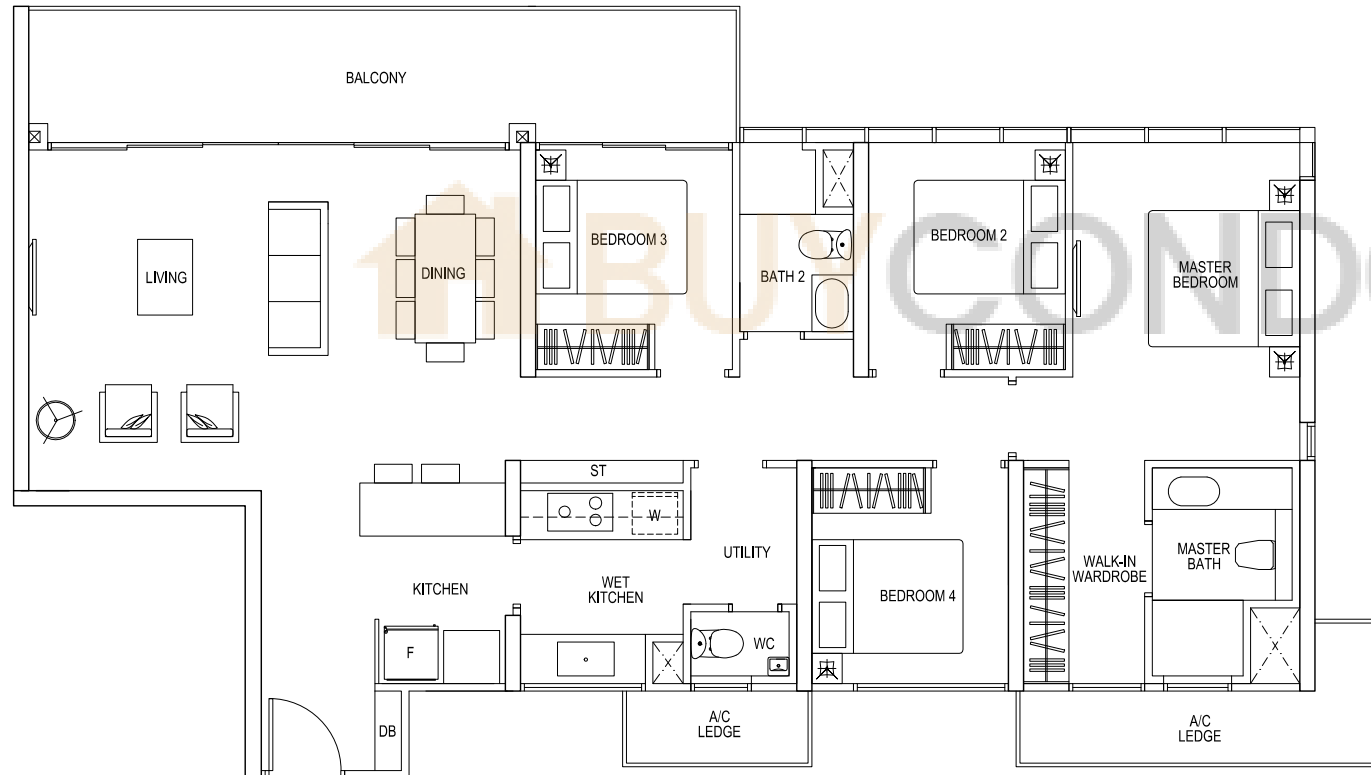
Total Area = 142 sqm

#06-10, #10-10, #14-10

#06-14, #10-14, #14-14

#07-10, #11-10,
#15-10

#05-14, #07-14,
#11-14, #15-14

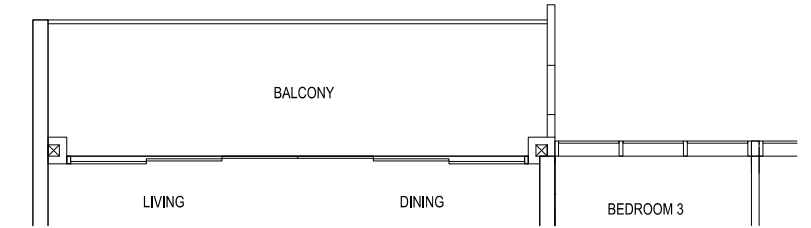


Area includes A/C ledge, balcony, private roof terrace and void area. Some units are mirror images of the apartment plans shown in the brochure. Please refer to the key plans for orientation. The plans are subject to change as may be approved by the relevant authorities. All floor areas are approximate measurements only and are subject to government resurvey. Abbreviation: A/C ledge (Aircon Ledge), Private Roof Terrace, ST (Store), DB (Distribution Board), F (Fridge), W (Washing Machine).

TYPE H D1a(1)

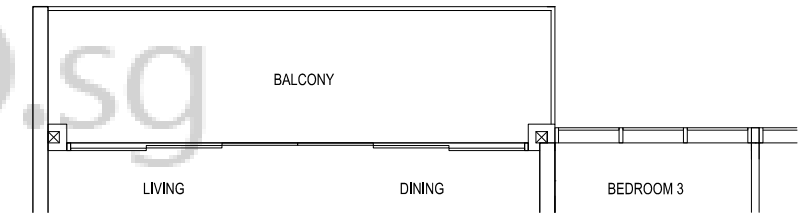
4-BEDROOM

Total Area = 138 sqm



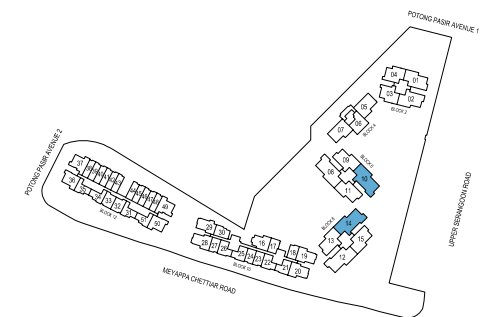
#08-10, #12-10, #16-10,

#08-14, #12-14, #16-14



#09-10, #13-10, #17-10,

#09-14, #13-14, #17-14



KEY PLAN

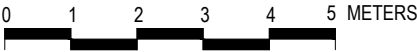
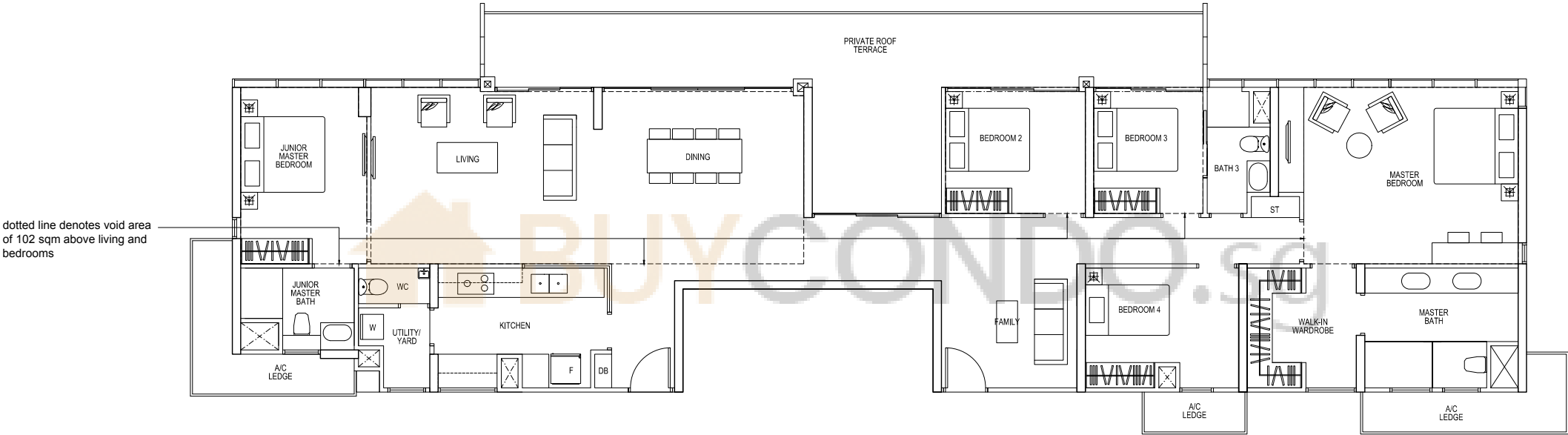


TYPE PH1

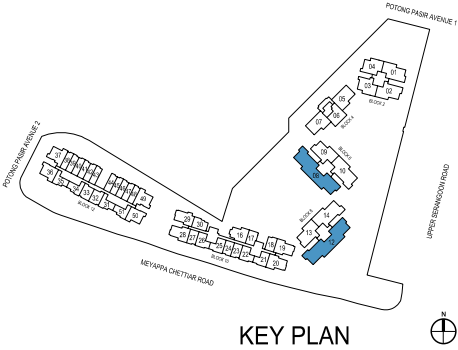
5-BEDROOM PENTHOUSE

Total Area = 350 sqm
(Including Void Area of 102 sqm)

- #18-08 HIGH CEILING
- #18-12 HIGH CEILING



Area includes A/C ledge, balcony, private roof terrace and void area. Some units are mirror images of the apartment plans shown in the brochure. Please refer to the key plans for orientation. The plans are subject to change as may be approved by the relevant authorities. All floor areas are approximate measurements only and are subject to government resurvey. Abbreviation: A/C ledge (Aircon Ledge), Private Roof Terrace, ST (Store), DB (Distribution Board), F (Fridge), W (Washing Machine).

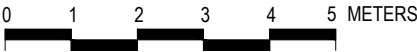
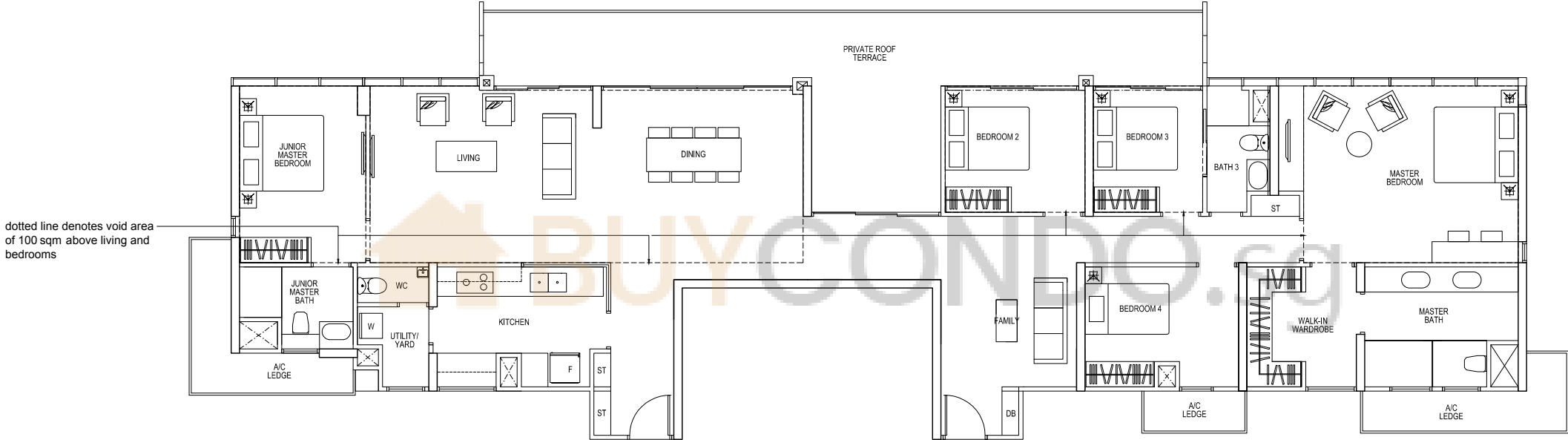


TYPE PH2

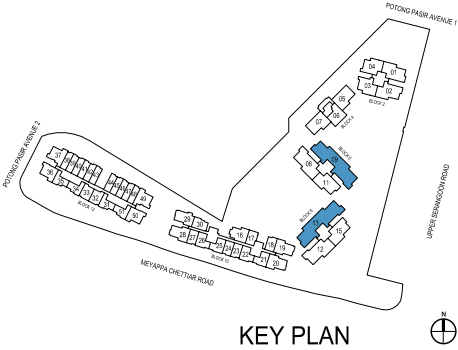
5-BEDROOM PENTHOUSE

Total Area = 353 sqm
(Including Void Area of 100 sqm)

#18-09 HIGH CEILING
#18-13 HIGH CEILING



Area includes A/C ledge, balcony, private roof terrace and void area. Some units are mirror images of the apartment plans shown in the brochure. Please refer to the key plans for orientation. The plans are subject to change as may be approved by the relevant authorities. All floor areas are approximate measurements only and are subject to government resurvey. Abbreviation: A/C ledge (Aircon Ledge), Private Roof Terrace, ST (Store), DB (Distribution Board), F (Fridge), W (Washing Machine).

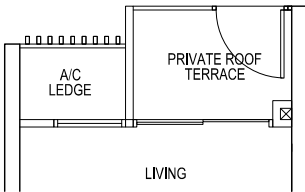
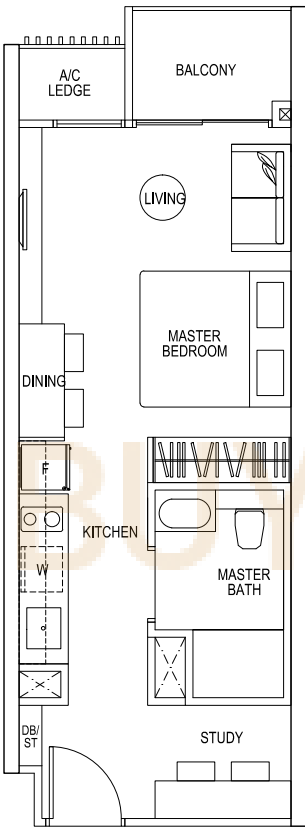


TYPE S A1

1-BEDROOM

Total Area = 39 sqm

- #06-38, #07-38, #09-38, #10-38, #11-38, #13-38, #14-38, #15-38, #17-38 (MIRROR)
- #06-39, #07-39, #09-39, #10-39, #11-39, #13-39, #14-39, #15-39, #17-39
- #07-40, #08-40, #09-40, #11-40, #12-40, #13-40, #15-40, #16-40, #17-40 (MIRROR)
- #07-41, #08-41, #09-41, #11-41, #12-41, #13-41, #15-41, #16-41, #17-41
- #06-42 TO #17-42 (MIRROR)
- #06-43 TO #17-43
- #07-44, #09-44, #11-44, #13-44, #15-44, #17-44
- #07-45, #08-45, #09-45, #11-45, #12-45, #13-45, #15-45, #16-45, #17-45 (MIRROR)
- #07-46, #08-46, #09-46, #11-46, #12-46, #13-46, #15-46, #16-46, #17-46
- #06-47, #07-47, #09-47, #10-47, #11-47, #13-47, #14-47, #15-47, #17-47 (MIRROR)
- #06-48, #07-48, #09-48, #10-48, #11-48, #13-48, #14-48, #15-48, #17-48

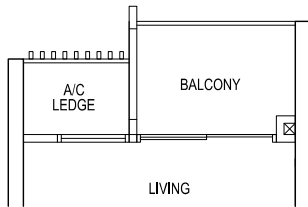


TYPE S A1p

1-BEDROOM

Total Area = 39 sqm

- #05-38 (MIRROR)
- #05-39
- #05-40 (MIRROR)
- #05-41
- #05-42 (MIRROR)
- #05-43
- #05-44
- #05-45 (MIRROR)
- #05-46
- #05-47 (MIRROR)
- #05-48

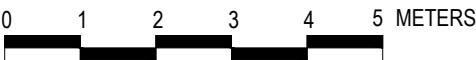


TYPE S A1

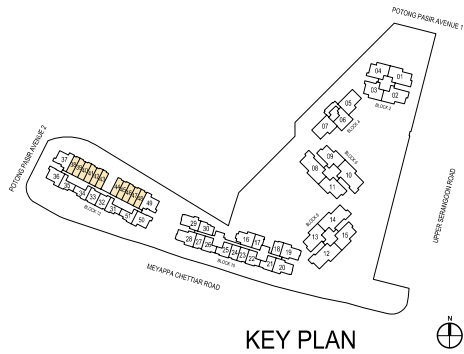
1-BEDROOM

Total Area = 39 sqm

- #08-38, #12-38, #16-38 (MIRROR)
- #08-39, #12-39, #16-39
- #06-40, #10-40, #14-40 (MIRROR)
- #06-41, #10-41, #14-41
- #06-44, #08-44, #10-44, #12-44, #14-44, #16-44
- #06-45, #10-45, #14-45 (MIRROR)
- #06-46, #10-46, #14-46
- #08-47, #12-47, #16-47 (MIRROR)
- #08-48, #12-48, #16-48



Area includes A/C ledge, balcony, private roof terrace and void area. Some units are mirror images of the apartment plans shown in the brochure. Please refer to the key plans for orientation. The plans are subject to change as may be approved by the relevant authorities. All floor areas are approximate measurements only and are subject to government resurvey. Abbreviation: A/C ledge (Aircon Ledge), Private Roof Terrace, ST (Store), DB (Distribution Board), F (Fridge), W (Washing Machine).



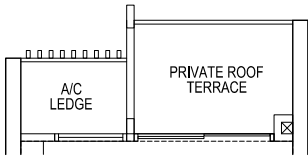
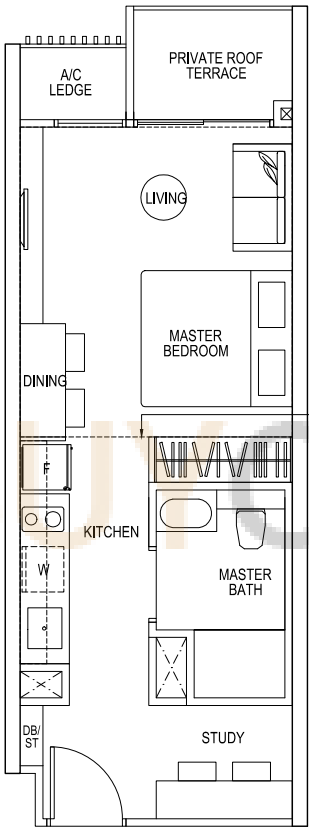


TYPE S A1r

1-BEDROOM

Total Area = 55 sqm
(Including Void Area of 16 sqm)

- #18-38 HIGH CEILING (MIRROR)
- #18-39 HIGH CEILING
- #18-42 HIGH CEILING (MIRROR)
- #18-43 HIGH CEILING
- #18-47 HIGH CEILING (MIRROR)
- #18-48 HIGH CEILING

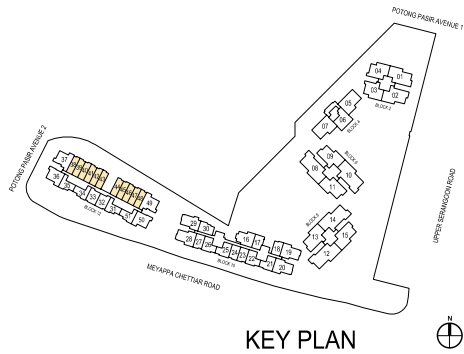


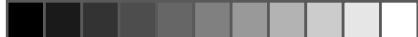
- #18-40 HIGH CEILING (MIRROR)
- #18-41 HIGH CEILING
- #18-44 HIGH CEILING
- #18-45 HIGH CEILING (MIRROR)
- #18-46 HIGH CEILING

dotted line denotes void area
of 16 sqm above living and
bedrooms



Area includes A/C ledge, balcony, private roof terrace and void area. Some units are mirror images of the apartment plans shown in the brochure. Please refer to the key plans for orientation. The plans are subject to change as may be approved by the relevant authorities. All floor areas are approximate measurements only and are subject to government resurvey. Abbreviation: A/C ledge (Aircon Ledge), Private Roof Terrace, ST (Store), DB (Distribution Board), F (Fridge), W (Washing Machine).





TYPE S AS1p

1-BEDROOM + STUDY

Total Area = 50 sqm

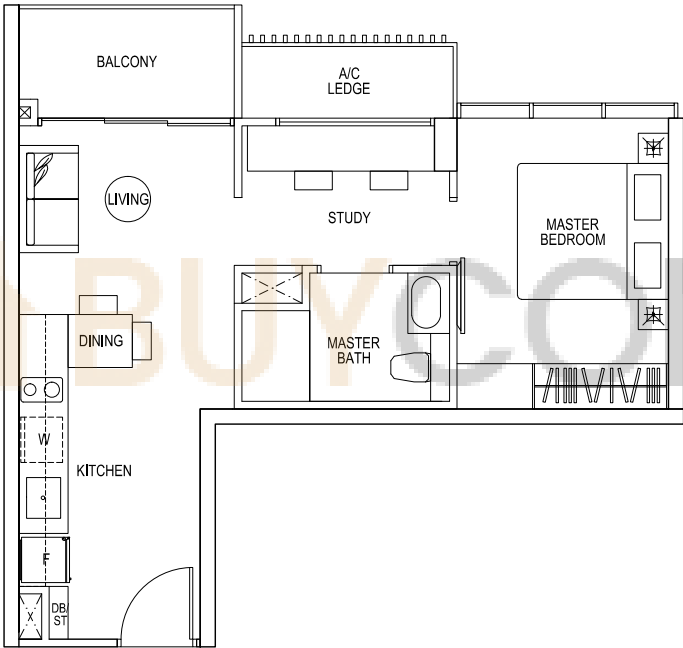
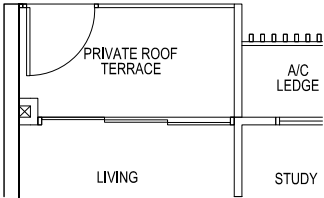
- #05-31 (MIRROR)
- #05-34
- #05-35 (MIRROR)
- #05-51

TYPE S AS1

1-BEDROOM + STUDY

Total Area = 50 sqm

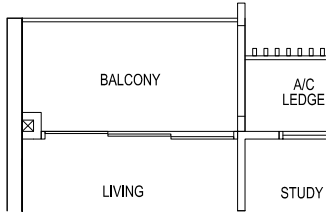
- #07-31, #09-31, #11-31, #13-31, #15-31, #17-31 (MIRROR)
- #07-34, #09-34, #11-34, #13-34, #15-34, #17-34
- #07-35, #09-35, #11-35, #13-35, #15-35, #17-35 (MIRROR)
- #07-51, #09-51, #11-51, #13-51, #15-51, #17-51



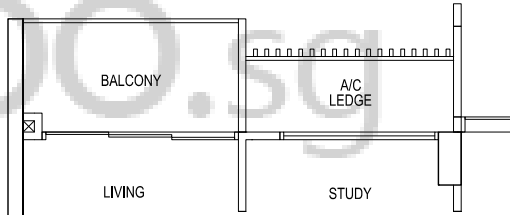
TYPE S AS1

1-BEDROOM + STUDY

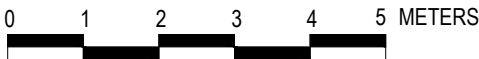
Total Area = 50 sqm



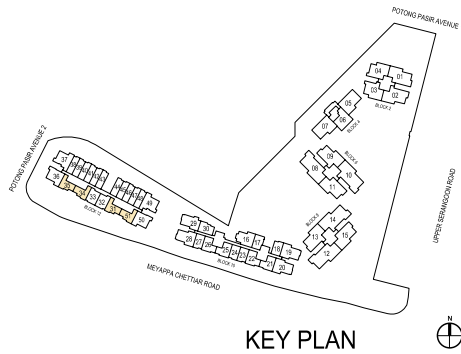
- #06-31, #10-31, #14-31 (MIRROR)
- #08-34, #12-34, #16-34
- #06-35, #10-35, #14-35 (MIRROR)
- #08-51, #12-51, #16-51



- #08-31, #12-31, #16-31 (MIRROR)
- #06-34, #10-34, #14-34
- #08-35, #12-35, #16-35 (MIRROR)
- #06-51, #10-51, #14-51



Area includes A/C ledge, balcony, private roof terrace and void area. Some units are mirror images of the apartment plans shown in the brochure. Please refer to the key plans for orientation. The plans are subject to change as may be approved by the relevant authorities. All floor areas are approximate measurements only and are subject to government resurvey. Abbreviation: A/C ledge (Aircon Ledge), Private Roof Terrace, ST (Store), DB (Distribution Board), F (Fridge), W (Washing Machine).





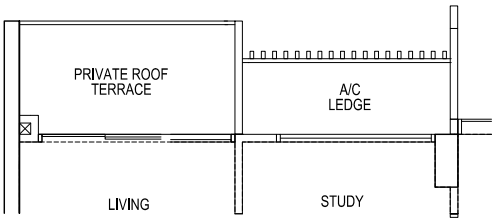
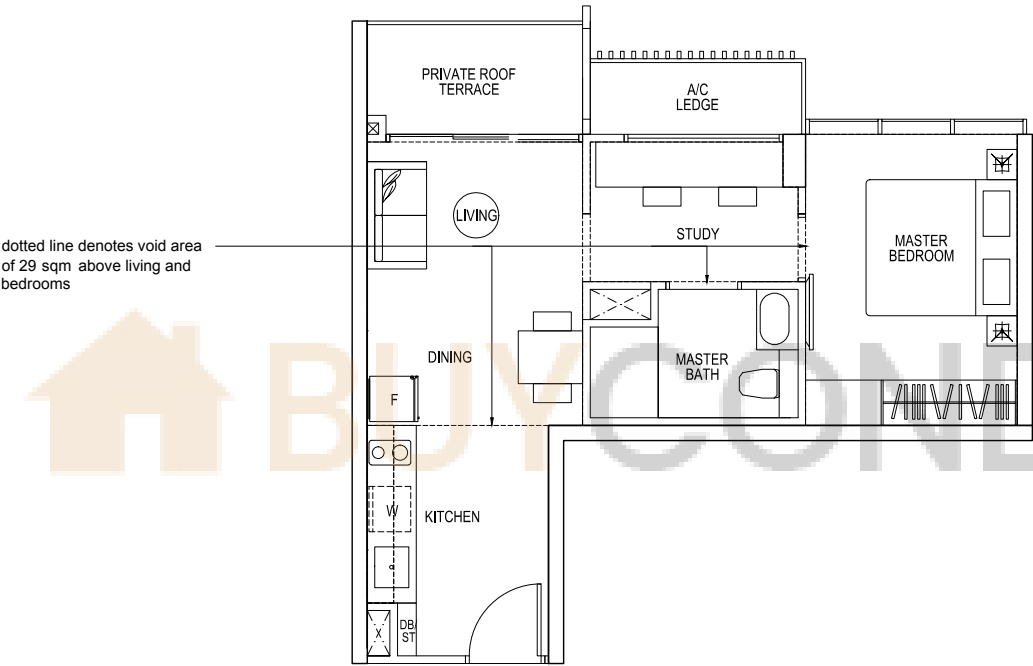
TYPE S AS1r

1-BEDROOM + STUDY

Total Area = 79 sqm
(Including Void Area of 29 sqm)

#18-31 HIGH CEILING (MIRROR)

#18-35 HIGH CEILING (MIRROR)

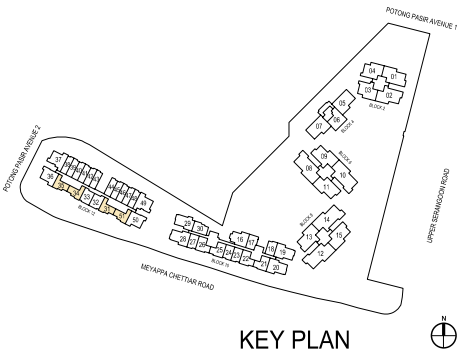


#18-34 HIGH CEILING

#18-51 HIGH CEILING



Area includes A/C ledge, balcony, private roof terrace and void area. Some units are mirror images of the apartment plans shown in the brochure. Please refer to the key plans for orientation. The plans are subject to change as may be approved by the relevant authorities. All floor areas are approximate measurements only and are subject to government resurvey. Abbreviation: A/C ledge (Aircon Ledge), Private Roof Terrace, ST (Store), DB (Distribution Board), F (Fridge), W (Washing Machine).



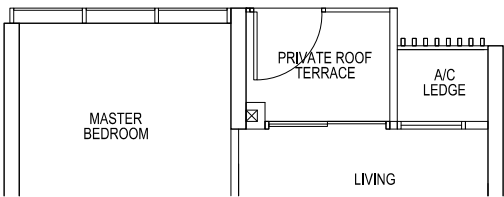


TYPE S AS2p

1-BEDROOM + STUDY

Total Area = 49 sqm

#05-33



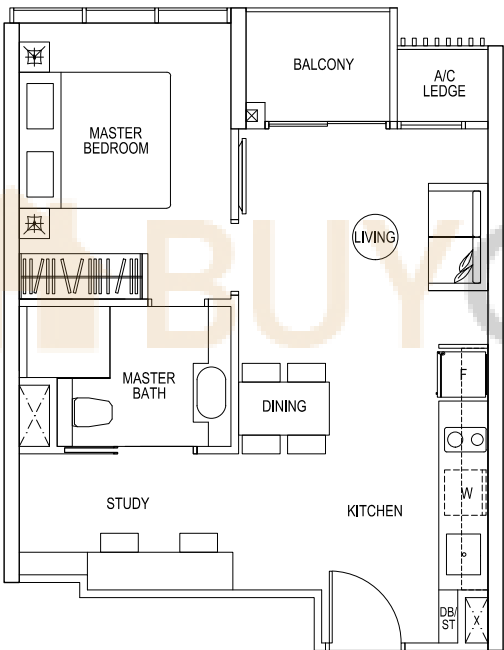
TYPE S AS2

1-BEDROOM + STUDY

Total Area = 49 sqm

#06-32 to #17-32 (MIRROR)

#06-33 to #17-33



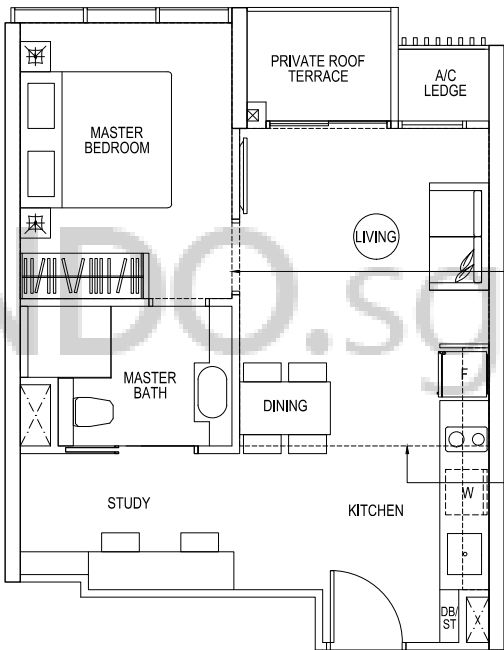
TYPE S AS2r

1-BEDROOM + STUDY

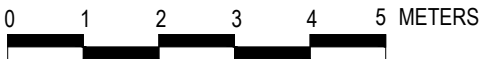
Total Area = 75 sqm
(Including Void Area of 26 sqm)

#18-32 HIGH CEILING (MIRROR)

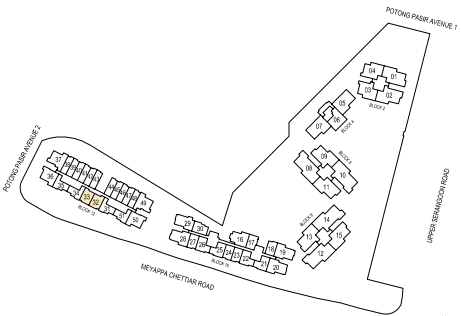
#18-33 HIGH CEILING



dotted line denotes void area
of 26 sqm above living and
bedrooms



Area includes A/C ledge, balcony, private roof terrace and void area. Some units are mirror images of the apartment plans shown in the brochure. Please refer to the key plans for orientation. The plans are subject to change as may be approved by the relevant authorities. All floor areas are approximate measurements only and are subject to government resurvey. Abbreviation: A/C ledge (Aircon Ledge), Private Roof Terrace, ST (Store), DB (Distribution Board), F (Fridge), W (Washing Machine).



KEY PLAN





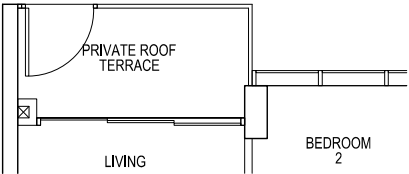
TYPE S B1p

2-BEDROOM

Total Area = 70 sqm

#05-36

#05-50 (MIRROR)



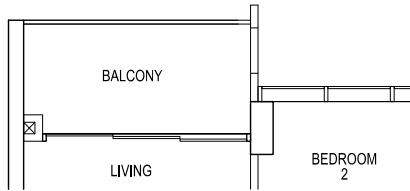
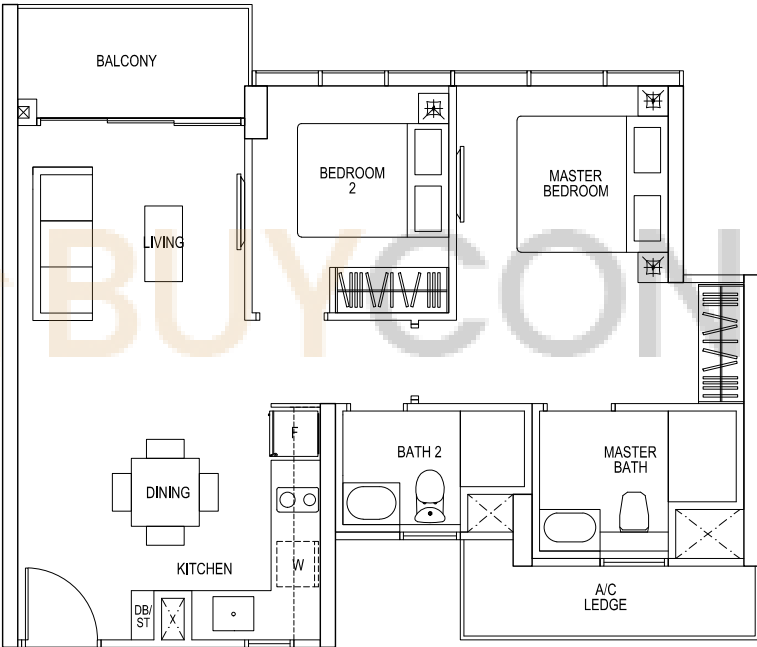
TYPE S B1

2-BEDROOM

Total Area = 70 sqm

#07-36, #09-36, #11-36, #13-36, #15-36, #17-36

#07-50, #09-50, #11-50, #13-50, #15-50, #17-50 (MIRROR)



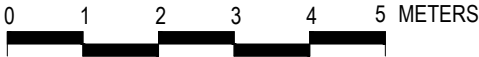
TYPE S B1

2-BEDROOM

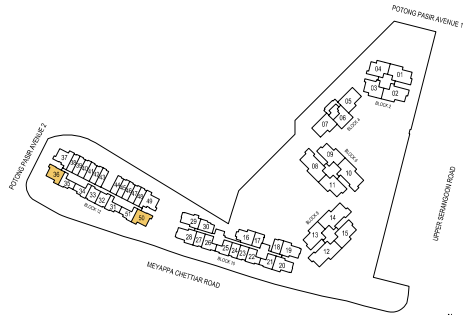
Total Area = 70 sqm

#06-36, #08-36, #10-36, #12-36, #14-36, #16-36

#06-50, #08-50, #10-50, #12-50, #14-50, #16-50 (MIRROR)



Area includes A/C ledge, balcony, private roof terrace and void area. Some units are mirror images of the apartment plans shown in the brochure. Please refer to the key plans for orientation. The plans are subject to change as may be approved by the relevant authorities. All floor areas are approximate measurements only and are subject to government resurvey. Abbreviation: A/C ledge (Aircon Ledge), Private Roof Terrace, ST (Store), DB (Distribution Board), F (Fridge), W (Washing Machine).



KEY PLAN



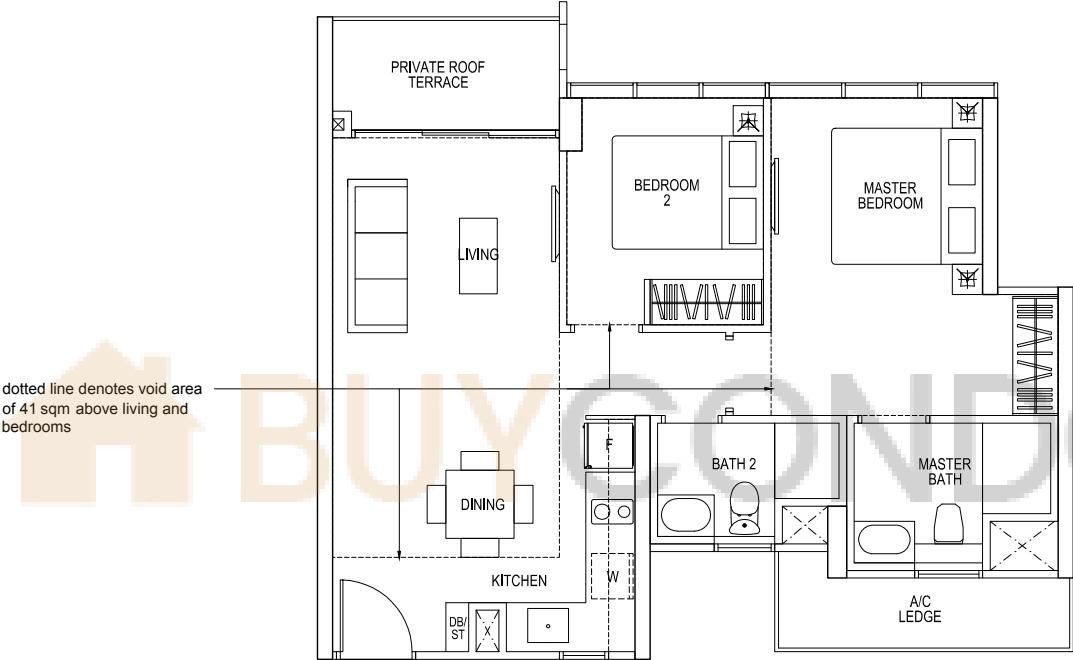


TYPE S B1r

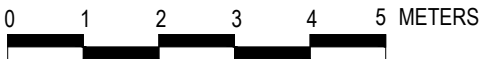
2-BEDROOM

Total Area = 111 sqm
(Including Void Area of 41 sqm)

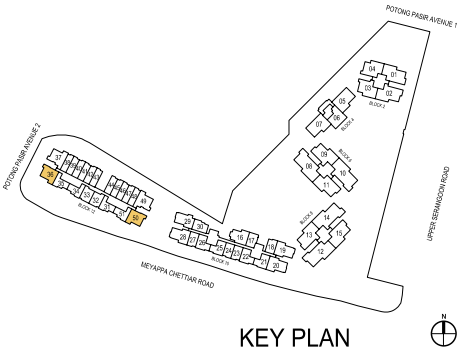
#18-36 HIGH CEILING
#18-50 HIGH CEILING (MIRROR)



dotted line denotes void area
of 41 sqm above living and
bedrooms



Area includes A/C ledge, balcony, private roof terrace and void area. Some units are mirror images of the apartment plans shown in the brochure. Please refer to the key plans for orientation. The plans are subject to change as may be approved by the relevant authorities. All floor areas are approximate measurements only and are subject to government resurvey. Abbreviation: A/C ledge (Aircon Ledge), Private Roof Terrace, ST (Store), DB (Distribution Board), F (Fridge), W (Washing Machine).





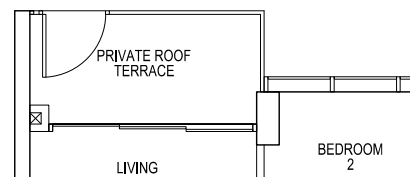
TYPE S B2p

2-BEDROOM

Total Area = 75 sqm

#05-37 (MIRROR)

#05-49



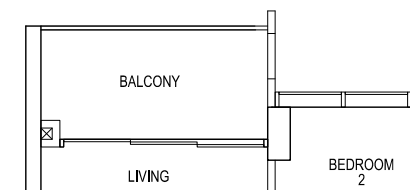
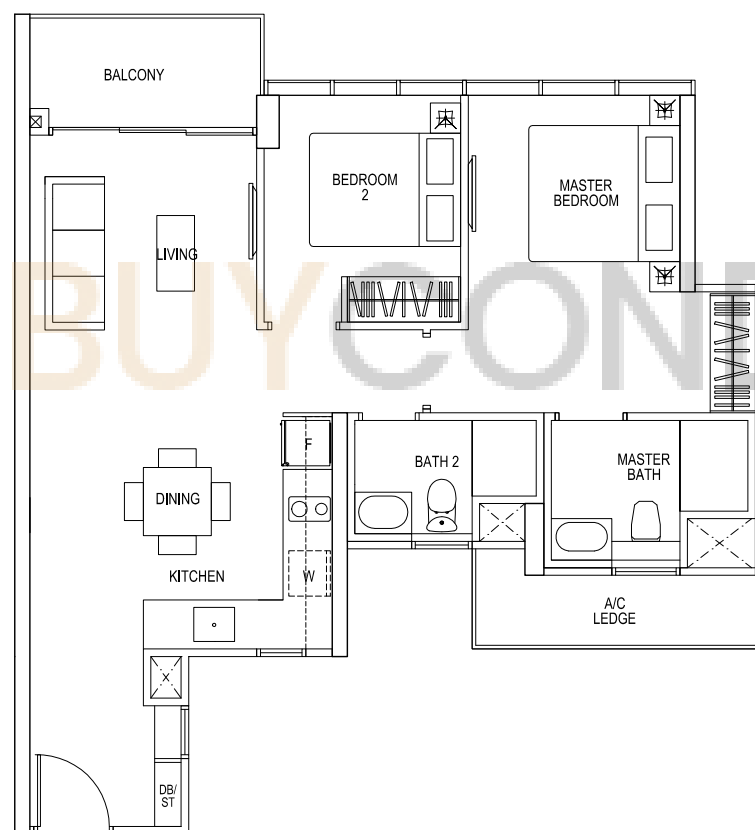
TYPE S B2

2-BEDROOM

Total Area = 75 sqm

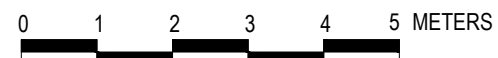
#07-37, #09-37, #11-37, #13-37, #15-37, #17-37 (MIRROR)

#07-49, #09-49, #11-49, #13-49, #15-49, #17-49

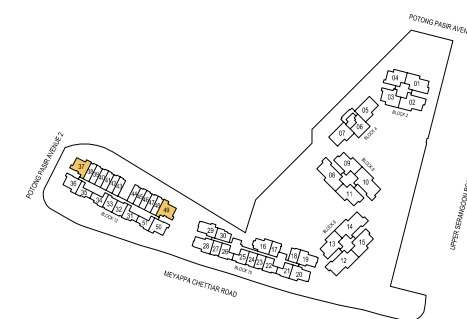


#06-37, #08-37, #10-37, #12-37, #14-37, #16-37 (MIRROR)

#06-49, #08-49, #10-49, #12-49, #14-49, #16-49



Area includes A/C ledge, balcony, private roof terrace and void area. Some units are mirror images of the apartment plans shown in the brochure. Please refer to the key plans for orientation. The plans are subject to change as may be approved by the relevant authorities. All floor areas are approximate measurements only and are subject to government resurvey. Abbreviation: A/C ledge (Aircon Ledge), Private Roof Terrace, ST (Store), DB (Distribution Board), F (Fridge), W (Washing Machine).



KEY PLAN





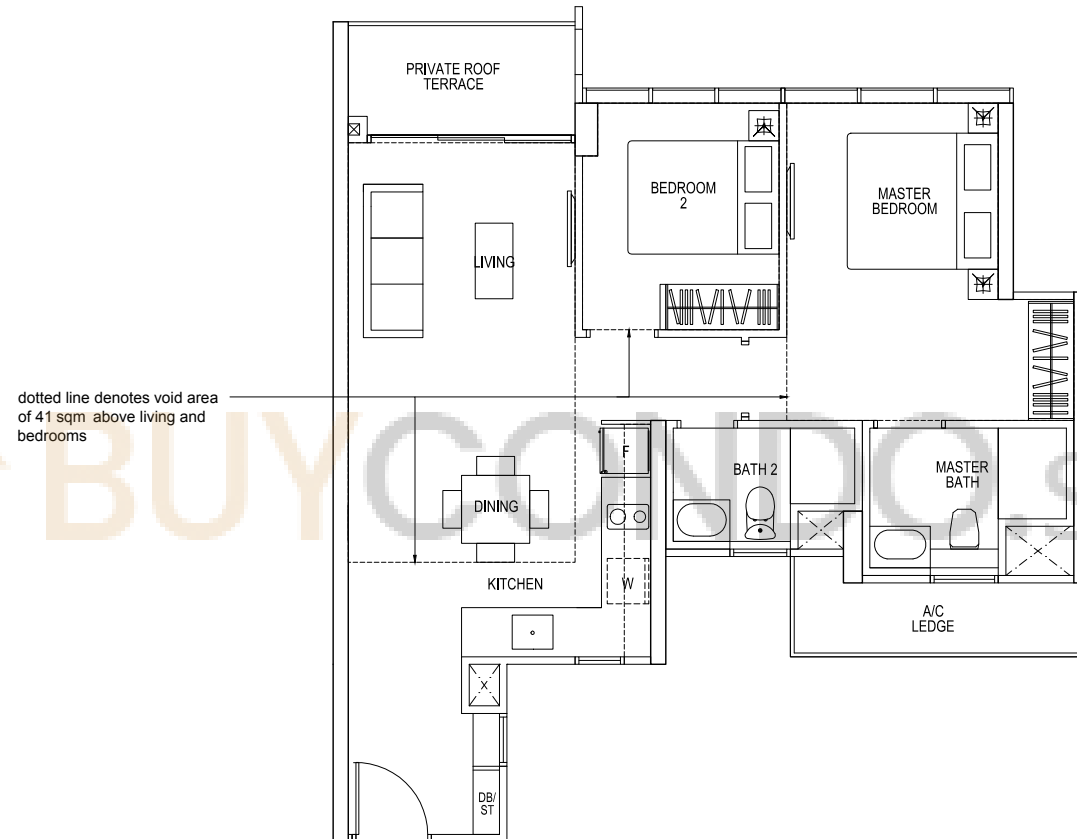
TYPE S B2r

2-BEDROOM

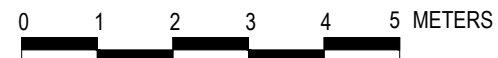
Total Area = 116 sqm
(Including Void Area of 41 sqm)

#18-37 HIGH CEILING (MIRROR)

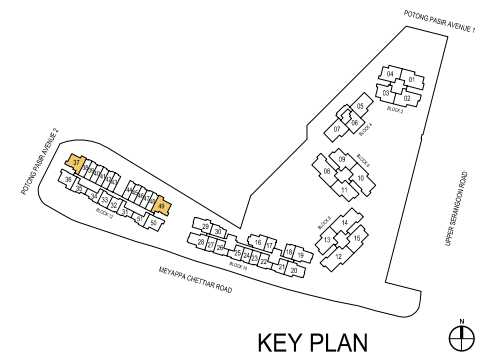
#18-49 HIGH CEILING



dotted line denotes void area
of 41 sqm above living and
bedrooms



Area includes A/C ledge, balcony, private roof terrace and void area. Some units are mirror images of the apartment plans shown in the brochure. Please refer to the key plans for orientation. The plans are subject to change as may be approved by the relevant authorities. All floor areas are approximate measurements only and are subject to government resurvey. Abbreviation: A/C ledge (Aircon Ledge), Private Roof Terrace, ST (Store), DB (Distribution Board), F (Fridge), W (Washing Machine).

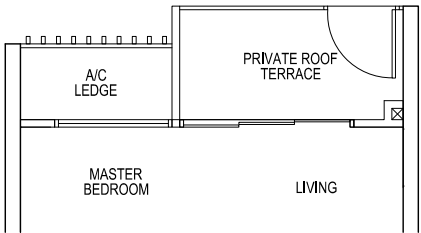


TYPE U AS1p

1-BEDROOM + STUDY

Total Area = 41 sqm

- #04-18
- #04-23 (MIRROR)
- #04-24
- #04-27 (MIRROR)

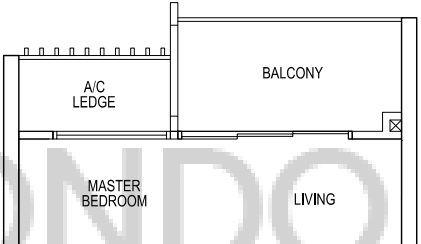
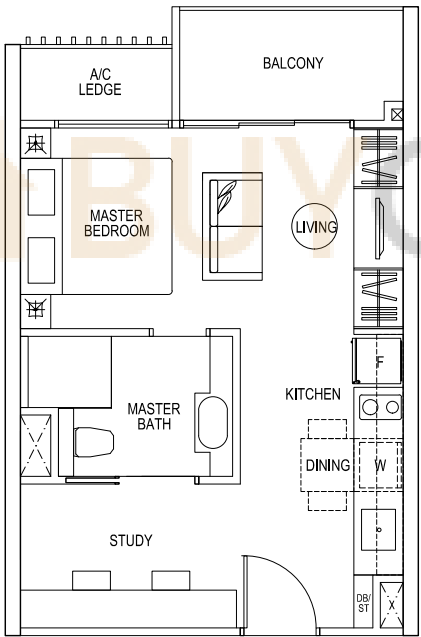


TYPE U AS1

1-BEDROOM + STUDY

Total Area = 41 sqm

- #05-18, #06-18, #07-18, #09-18, #10-18, #11-18, #13-18, #14-18, #15-18, #17-18
- #05-23 TO #17-23 (MIRROR)
- #05-24 TO #17-24
- #05-27 TO #17-27 (MIRROR)



TYPE U AS1

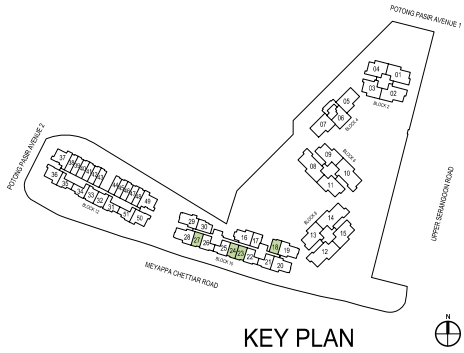
1-BEDROOM + STUDY

Total Area = 41 sqm

- #08-18, #12-18, #16-18



Area includes A/C ledge, balcony, private roof terrace and void area. Some units are mirror images of the apartment plans shown in the brochure. Please refer to the key plans for orientation. The plans are subject to change as may be approved by the relevant authorities. All floor areas are approximate measurements only and are subject to government resurvey. Abbreviation: A/C ledge (Aircon Ledge), Private Roof Terrace, ST (Store), DB (Distribution Board), F (Fridge), W (Washing Machine).

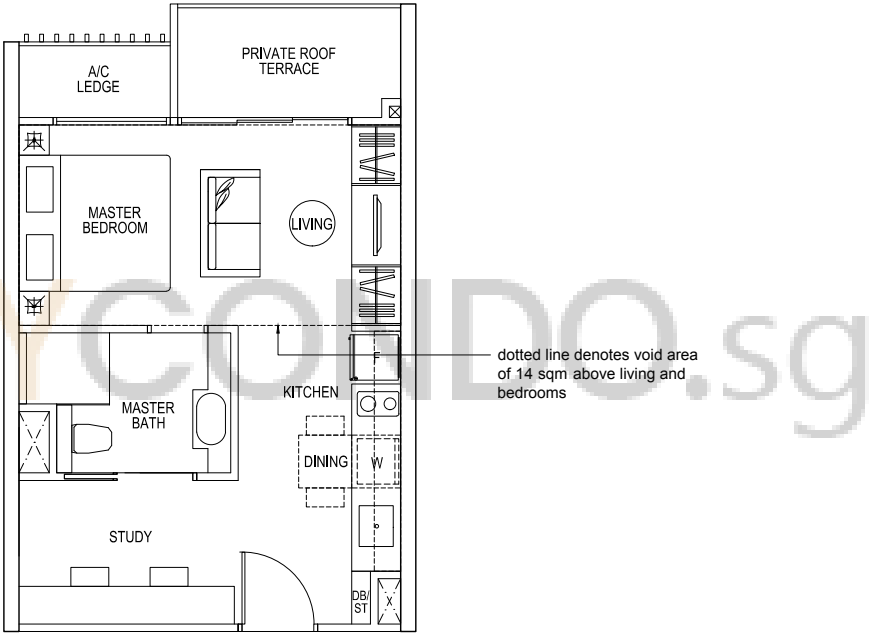


TYPE U AS1r

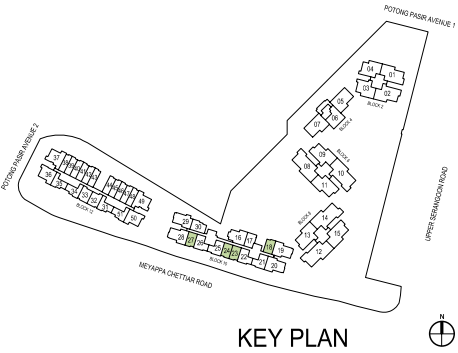
1-BEDROOM + STUDY

Total Area = 55 sqm
(Including Void Area of 14 sqm)

- #18-18 HIGH CEILING
- #18-23 HIGH CEILING (MIRROR)
- #18-24 HIGH CEILING
- #18-27 HIGH CEILING (MIRROR)



Area includes A/C ledge, balcony, private roof terrace and void area. Some units are mirror images of the apartment plans shown in the brochure. Please refer to the key plans for orientation. The plans are subject to change as may be approved by the relevant authorities. All floor areas are approximate measurements only and are subject to government resurvey. Abbreviation: A/C ledge (Aircon Ledge), Private Roof Terrace, ST (Store), DB (Distribution Board), F (Fridge), W (Washing Machine).

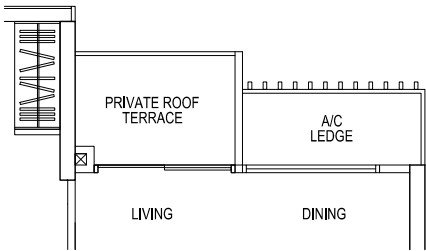


TYPE U AS2p

1-BEDROOM + STUDY

Total Area = 49 sqm

#04-30



TYPE U AS2r

1-BEDROOM + STUDY

Total Area = 72 sqm
(Including Void Area of 23 sqm)

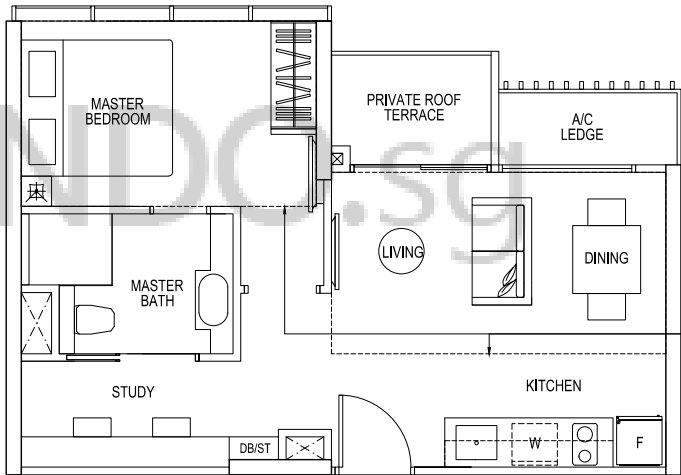
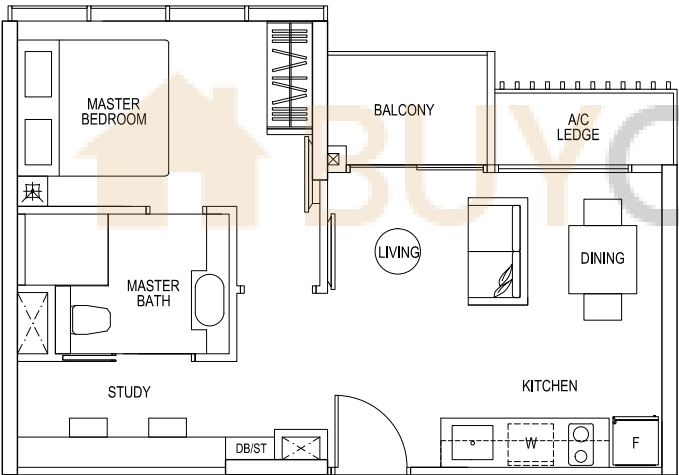
#18-30 HIGH CEILING

TYPE U AS2

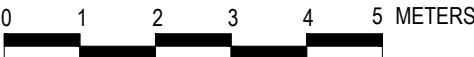
1-BEDROOM + STUDY

Total Area = 49 sqm

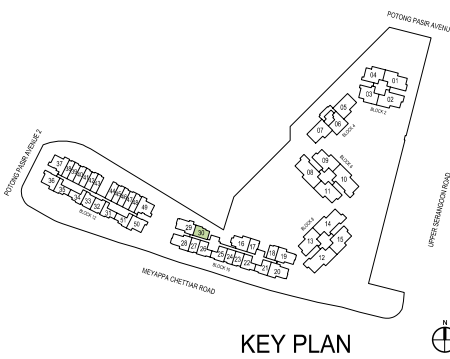
#05-30 to #17-30



dotted line denotes void area of 23 sqm above living and bedrooms



Area includes A/C ledge, balcony, private roof terrace and void area. Some units are mirror images of the apartment plans shown in the brochure. Please refer to the key plans for orientation. The plans are subject to change as may be approved by the relevant authorities. All floor areas are approximate measurements only and are subject to government resurvey. Abbreviation: A/C ledge (Aircon Ledge), Private Roof Terrace, ST (Store), DB (Distribution Board), F (Fridge), W (Washing Machine).



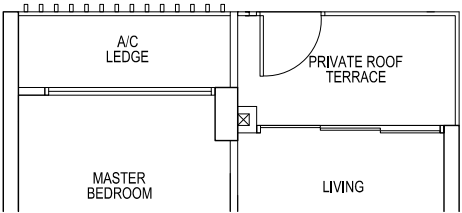
KEY PLAN

TYPE U AS3p

1-BEDROOM + STUDY

Total Area = 45 sqm

#04-17

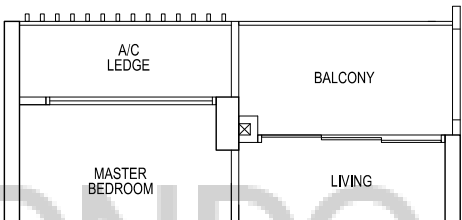
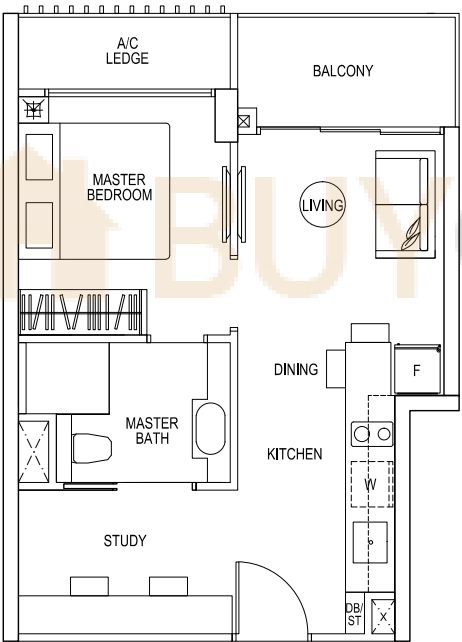


TYPE U AS3

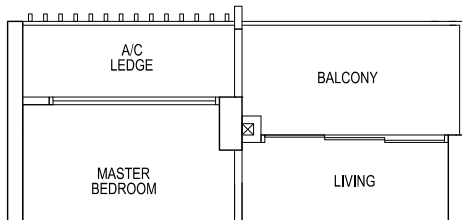
1-BEDROOM + STUDY

Total Area = 45 sqm

#05-17, #07-17, #09-17, #11-17,
#13-17, #15-17, #17-17



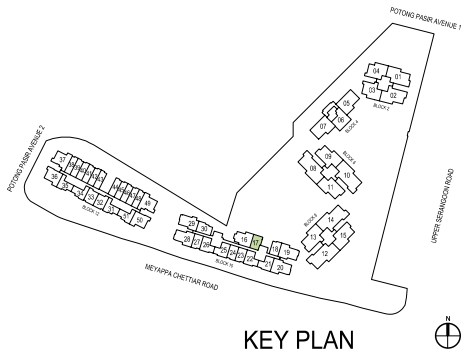
#08-17, #12-17, #16-17



#06-17, #10-17, #14-17



Area includes A/C ledge, balcony, private roof terrace and void area. Some units are mirror images of the apartment plans shown in the brochure. Please refer to the key plans for orientation. The plans are subject to change as may be approved by the relevant authorities. All floor areas are approximate measurements only and are subject to government resurvey. Abbreviation: A/C ledge (Aircon Ledge), Private Roof Terrace, ST (Store), DB (Distribution Board), F (Fridge), W (Washing Machine).

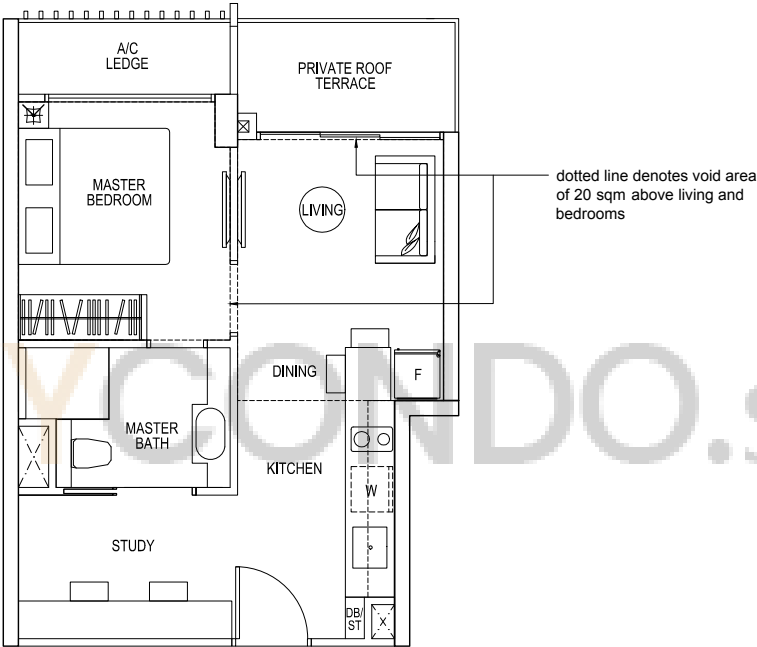


TYPE U AS3r

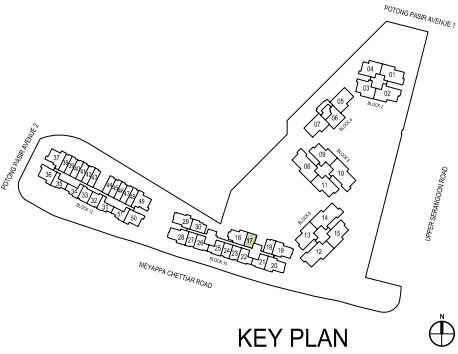
1-BEDROOM + STUDY

Total Area = 65 sqm
(Including Void Area of 20 sqm)

#18-17 HIGH CEILING



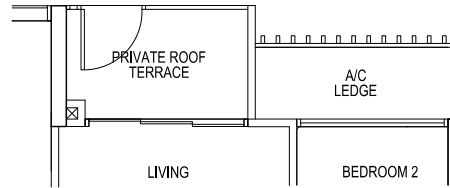
Area includes A/C ledge, balcony, private roof terrace and void area. Some units are mirror images of the apartment plans shown in the brochure. Please refer to the key plans for orientation. The plans are subject to change as may be approved by the relevant authorities. All floor areas are approximate measurements only and are subject to government resurvey. Abbreviation: A/C ledge (Aircon Ledge), Private Roof Terrace, ST (Store), DB (Distribution Board), F (Fridge), W (Washing Machine).



TYPE U B1p

2-BEDROOM

Total Area = 54 sqm



#04-21

#04-22 (MIRROR)

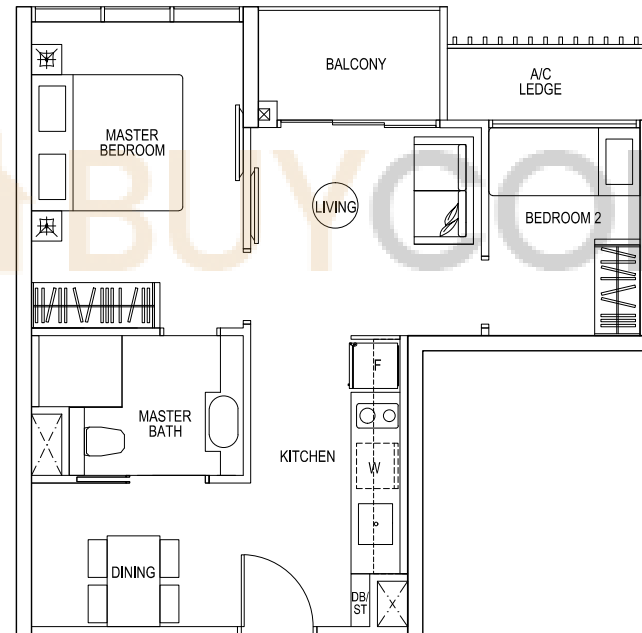
#04-25

#04-26 (MIRROR)

TYPE U B1

2-BEDROOM

Total Area = 54 sqm

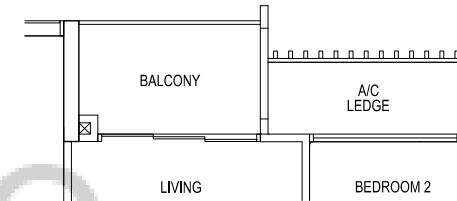


#05-21, #06-21, #07-21, #09-21, #10-21, #11-21, #13-21, #14-21, #15-21, #17-21

#05-22, #06-22, #07-22, #09-22, #10-22, #11-22, #13-22, #14-22, #15-22, #17-22 (MIRROR)

#05-25, #07-25, #08-25, #09-25, #11-25, #12-25, #13-25, #15-25, #16-25, #17-25

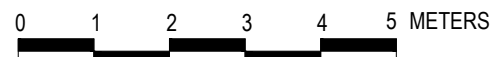
#05-26 TO #17-26 (MIRROR)



#08-21, #12-21, #16-21

#08-22, #12-22, #16-22 (MIRROR)

#06-25, #10-25, #14-25



Area includes A/C ledge, balcony, private roof terrace and void area. Some units are mirror images of the apartment plans shown in the brochure. Please refer to the key plans for orientation. The plans are subject to change as may be approved by the relevant authorities. All floor areas are approximate measurements only and are subject to government resurvey. Abbreviation: A/C ledge (Aircon Ledge), Private Roof Terrace, ST (Store), DB (Distribution Board), F (Fridge), W (Washing Machine).



KEY PLAN

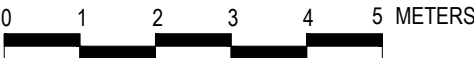
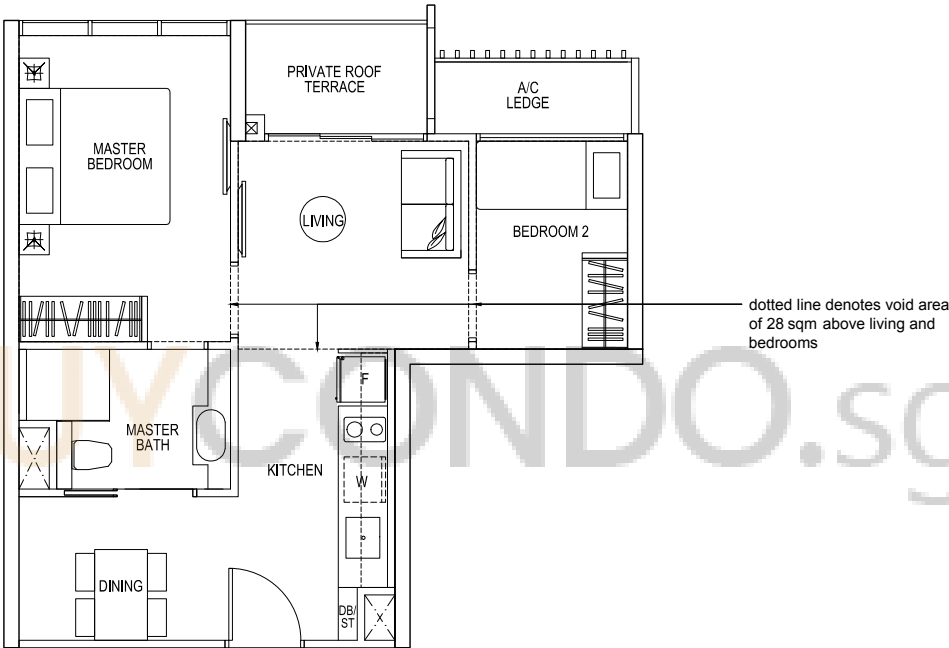


TYPE U B1r

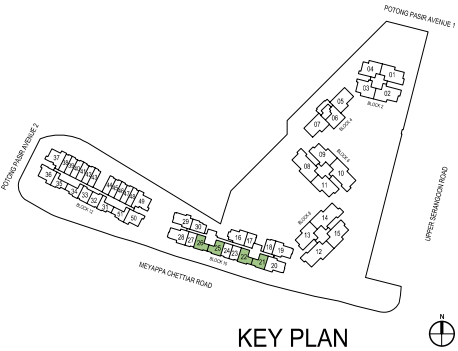
2-BEDROOM

Total Area = 82 sqm
(Including Void Area of 28 sqm)

- #18-21 HIGH CEILING
- #18-22 HIGH CEILING (MIRROR)
- #18-25 HIGH CEILING
- #18-26 HIGH CEILING (MIRROR)



Area includes A/C ledge, balcony, private roof terrace and void area. Some units are mirror images of the apartment plans shown in the brochure. Please refer to the key plans for orientation. The plans are subject to change as may be approved by the relevant authorities. All floor areas are approximate measurements only and are subject to government resurvey. Abbreviation: A/C ledge (Aircon Ledge), Private Roof Terrace, ST (Store), DB (Distribution Board), F (Fridge), W (Washing Machine).

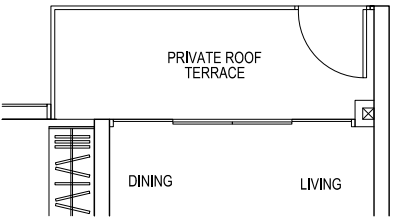


TYPE U BS1p

2-BEDROOM + STUDY

Total Area = 72 sqm

#04-16

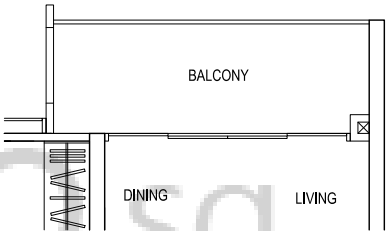
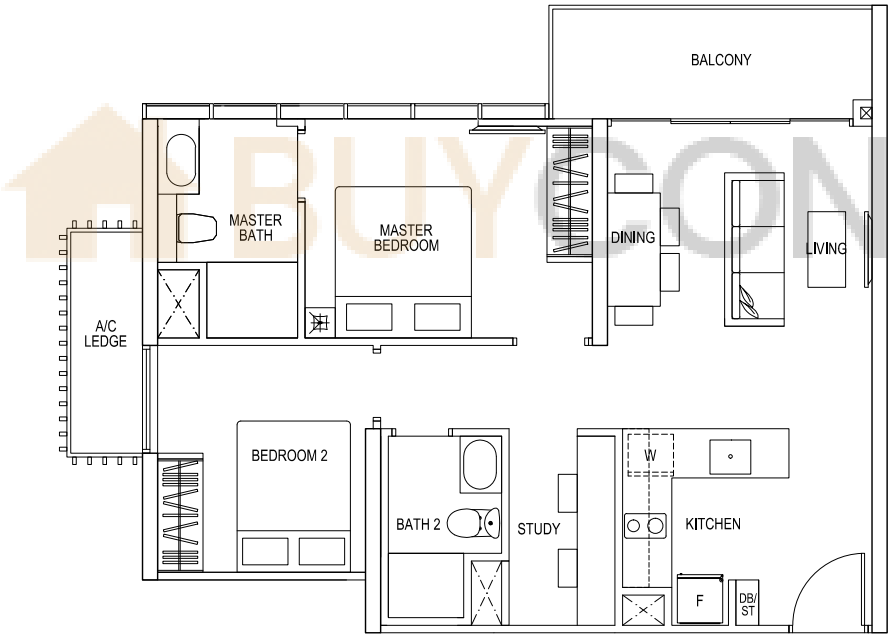


TYPE U BS1

2-BEDROOM + STUDY

Total Area = 72 sqm

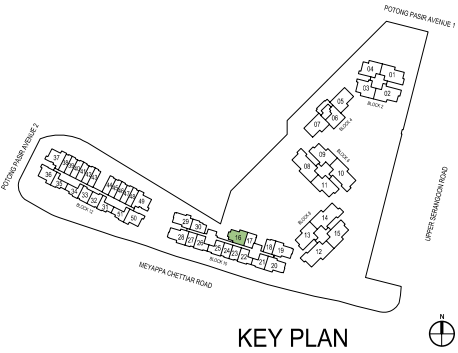
#05-16, #07-16, #09-16, #11-16,
#13-16, #15-16, #17-16



#06-16, #08-16, #10-16, #12-16,
#14-16, #16-16



Area includes A/C ledge, balcony, private roof terrace and void area. Some units are mirror images of the apartment plans shown in the brochure. Please refer to the key plans for orientation. The plans are subject to change as may be approved by the relevant authorities. All floor areas are approximate measurements only and are subject to government resurvey. Abbreviation: A/C ledge (Aircon Ledge), Private Roof Terrace, ST (Store), DB (Distribution Board), F (Fridge), W (Washing Machine).

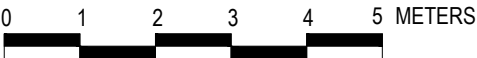
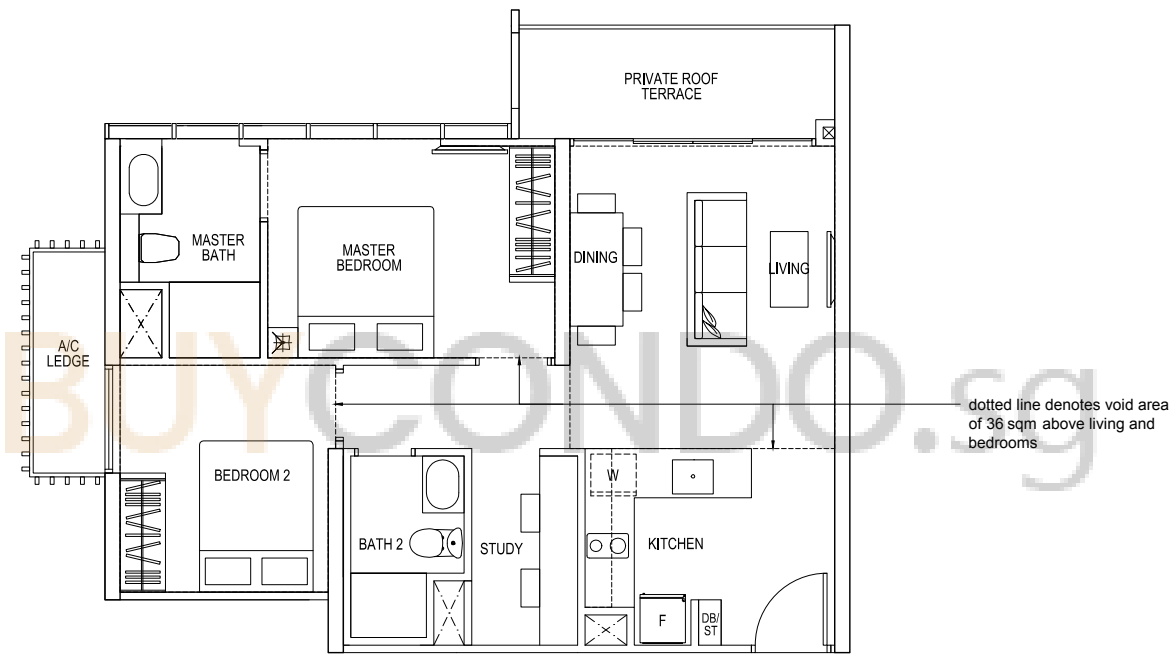


TYPE U BS1r

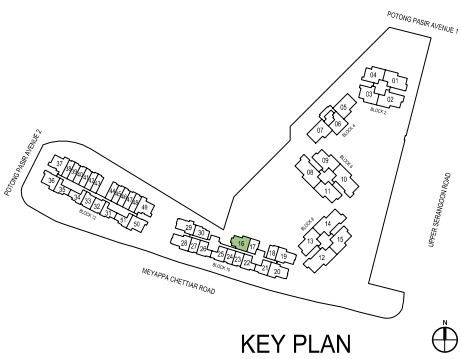
2-BEDROOM + STUDY

Total Area = 108 sqm
(Including Void Area of 36 sqm)

#18-16 HIGH CEILING



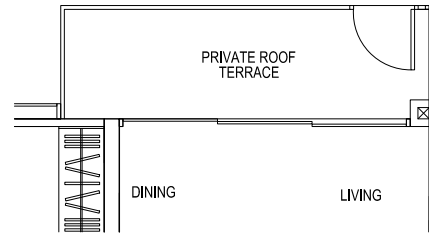
Area includes A/C ledge, balcony, private roof terrace and void area. Some units are mirror images of the apartment plans shown in the brochure. Please refer to the key plans for orientation. The plans are subject to change as may be approved by the relevant authorities. All floor areas are approximate measurements only and are subject to government resurvey. Abbreviation: A/C ledge (Aircon Ledge), Private Roof Terrace, ST (Store), DB (Distribution Board), F (Fridge), W (Washing Machine).



TYPE U C1p

3-BEDROOM

Total Area = 78 sqm



#04-19 (MIRROR)

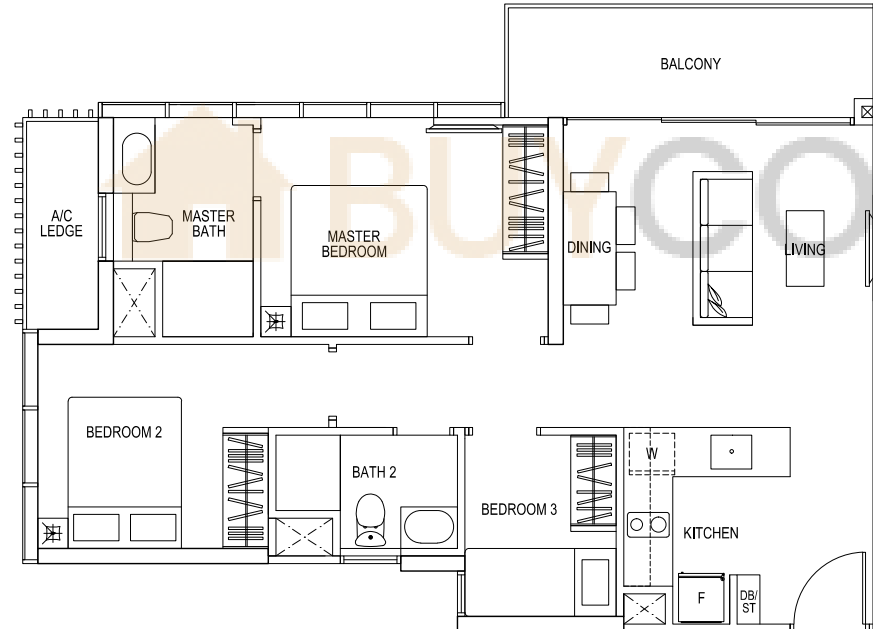
#04-20

#04-28 (MIRROR)

TYPE U C1

3-BEDROOM

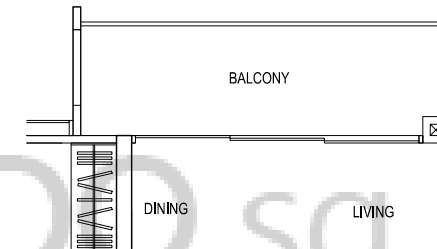
Total Area = 78 sqm



#05-19, #07-19, #09-19, #11-19,
#13-19, #15-19, #17-19 (MIRROR)

#05-20, #07-20, #09-20, #11-20,
#13-20, #15-20, #17-20

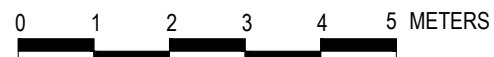
#05-28, #07-28, #09-28, #11-28,
#13-28, #15-28, #17-28 (MIRROR)



#06-19, #08-19, #10-19, #12-19,
#14-19, #16-19 (MIRROR)

#06-20, #08-20, #10-20, #12-20,
#14-20, #16-20

#06-28, #08-28, #10-28, #12-28,
#14-28, #16-28 (MIRROR)



Area includes A/C ledge, balcony, private roof terrace and void area. Some units are mirror images of the apartment plans shown in the brochure. Please refer to the key plans for orientation. The plans are subject to change as may be approved by the relevant authorities. All floor areas are approximate measurements only and are subject to government resurvey. Abbreviation: A/C ledge (Aircon Ledge), Private Roof Terrace, ST (Store), DB (Distribution Board), F (Fridge), W (Washing Machine).



KEY PLAN

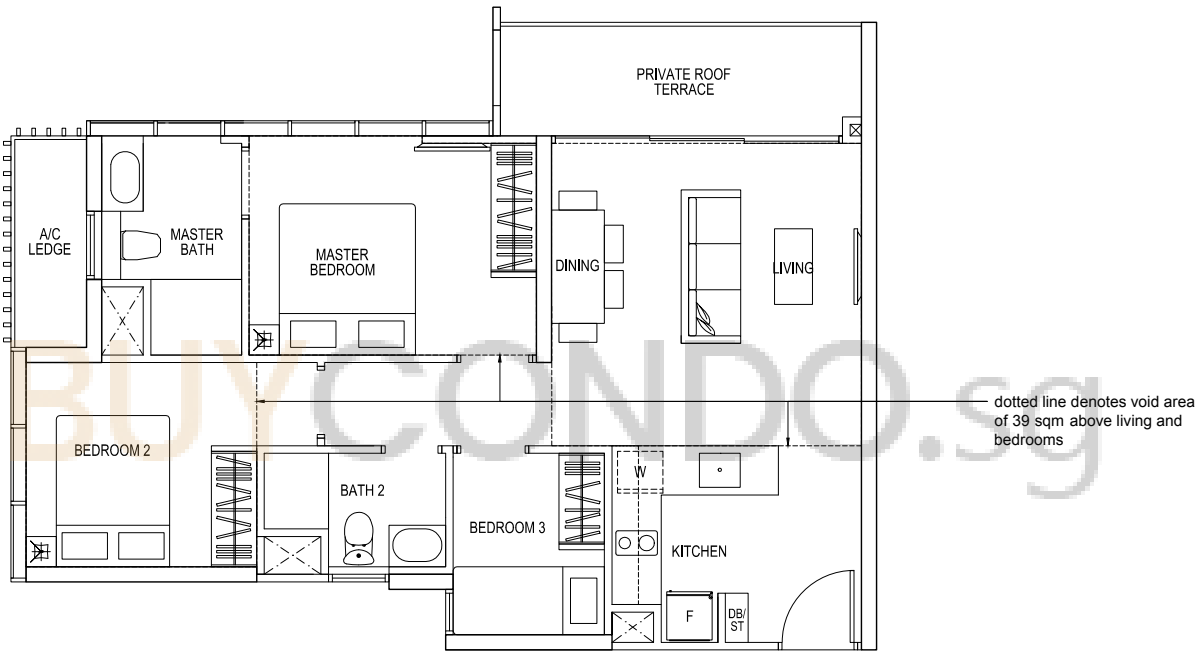


TYPE U C1r

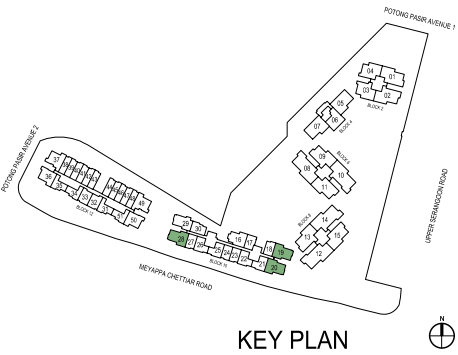
3-BEDROOM

Total Area = 117 sqm
(Including Void Area of 39 sqm)

- #18-19 HIGH CEILING (MIRROR)
- #18-20 HIGH CEILING
- #18-28 HIGH CEILING (MIRROR)



Area includes A/C ledge, balcony, private roof terrace and void area. Some units are mirror images of the apartment plans shown in the brochure. Please refer to the key plans for orientation. The plans are subject to change as may be approved by the relevant authorities. All floor areas are approximate measurements only and are subject to government resurvey. Abbreviation: A/C ledge (Aircon Ledge), Private Roof Terrace, ST (Store), DB (Distribution Board), F (Fridge), W (Washing Machine).

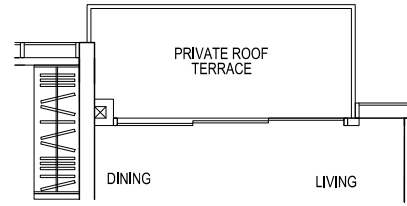


TYPE U C1ap

3-BEDROOM

Total Area = 72 sqm

#04-29

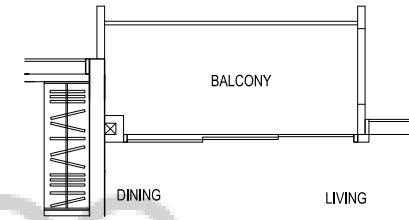
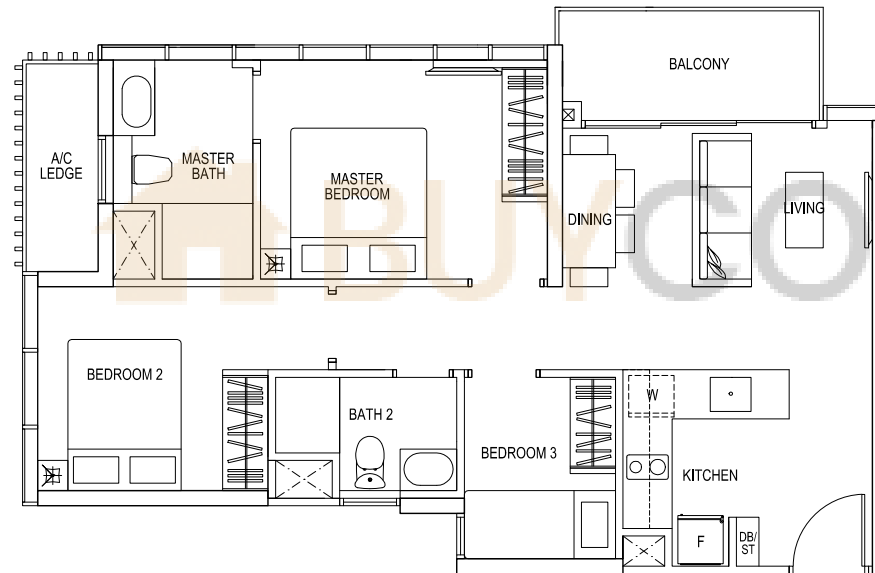


TYPE U C1a

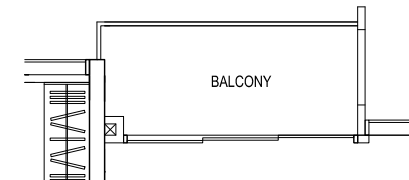
3-BEDROOM

Total Area = 72 sqm

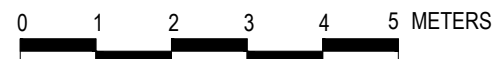
#05-29, #07-29, #09-29, #11-29,
#13-29, #15-29, #17-29



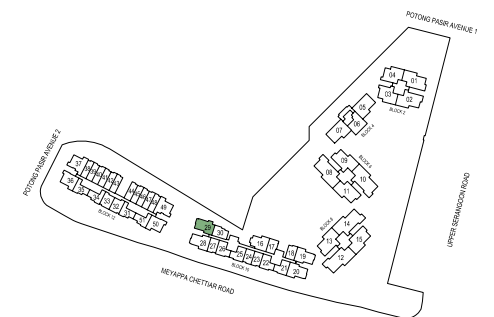
#06-29, #10-29, #14-29



#08-29, #12-29, #16-29



Area includes A/C ledge, balcony, private roof terrace and void area. Some units are mirror images of the apartment plans shown in the brochure. Please refer to the key plans for orientation. The plans are subject to change as may be approved by the relevant authorities. All floor areas are approximate measurements only and are subject to government resurvey. Abbreviation: A/C ledge (Aircon Ledge), Private Roof Terrace, ST (Store), DB (Distribution Board), F (Fridge), W (Washing Machine).



KEY PLAN

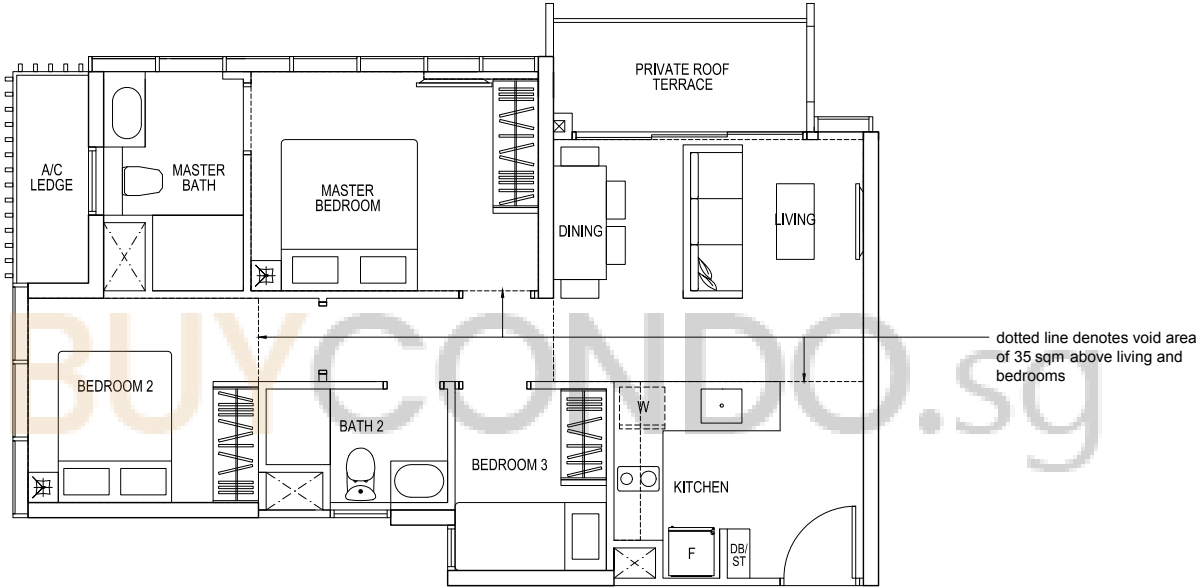


TYPE U C1ar

3-BEDROOM

Total Area = 107 sqm
(Including Void Area of 35 sqm)

#18-29 HIGH CEILING



Area includes A/C ledge, balcony, private roof terrace and void area. Some units are mirror images of the apartment plans shown in the brochure. Please refer to the key plans for orientation. The plans are subject to change as may be approved by the relevant authorities. All floor areas are approximate measurements only and are subject to government resurvey. Abbreviation: A/C ledge (Aircon Ledge), Private Roof Terrace, ST (Store), DB (Distribution Board), F (Fridge), W (Washing Machine).

