

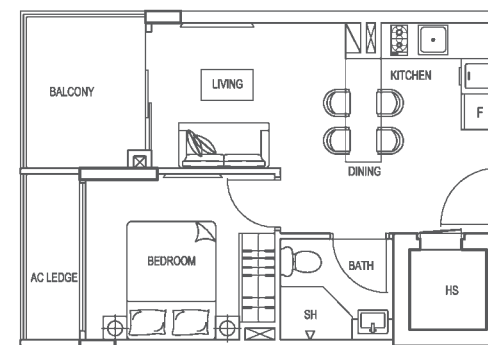


1-BEDROOM

1-BEDROOM PENTHOUSE

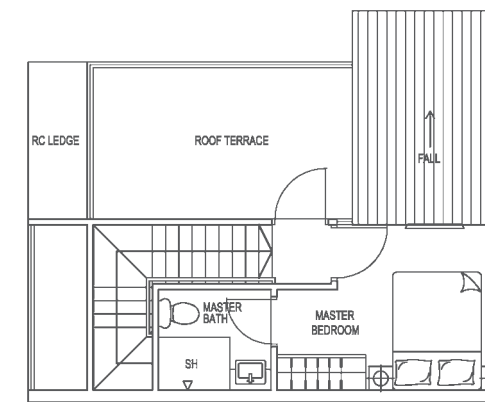
TYPE C

Unit #02-01, #03-01, #04-01,
#02-08, #03-08, #04-08
Area 45 sqm / 485 sqft

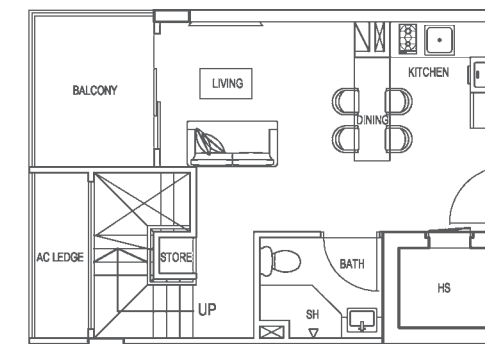


TYPE C1

Unit #05-01, #05-08
Area 76 sqm / 818 sqft



Upper Level



Lower Level

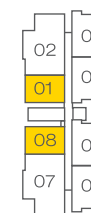


Main Entrance **A**
Entrance to Home 1 **B**
Entrance to Home 2 **C**

	OWNER
	OWNER + PARTNER
	OWNER + PARENTS
	OWNER + CHILD
	OWNER + TENANT
	OWNER + TENANT
	TENANT + TENANT

THE KEY TO HARMONIOUS LIVING

The functional dual-key units at The Serenno give you the privilege of owning two homes when you purchase a single unit. Resembling 2 individual apartments connected by a common foyer, unlimited lifestyle possibilities are awaiting your creativity. Share your home with your extended family and live in harmony with your loved ones or select your preferred residence and rent out the other without compromising your privacy.



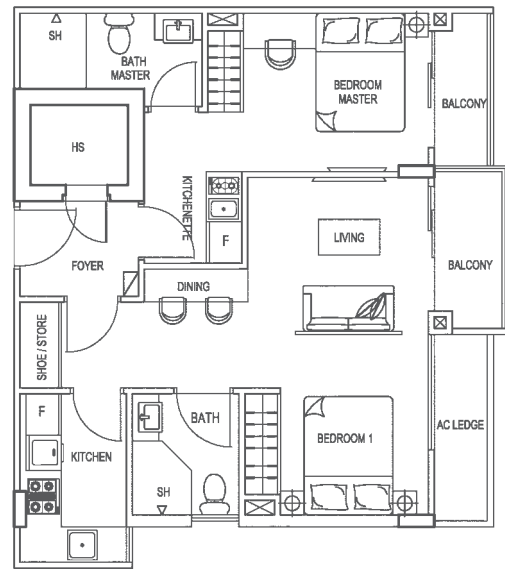
0 0.5m 1m 2m 3m



2-BEDROOM

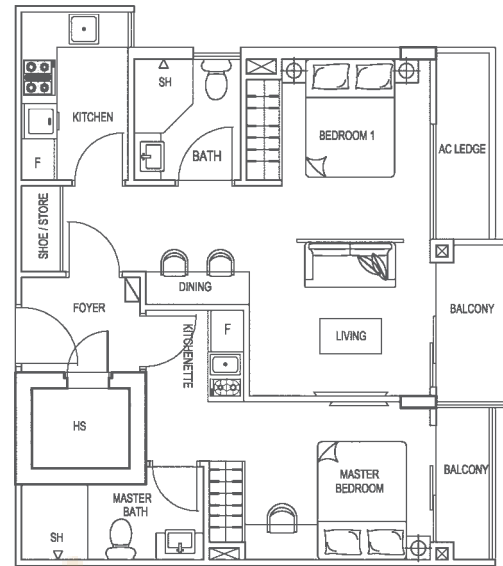
TYPE A(1)

Unit #02-06, #03-06, #04-06
Area 72 sqm / 775 sqft



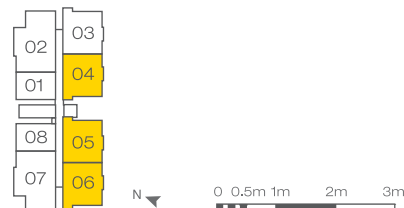
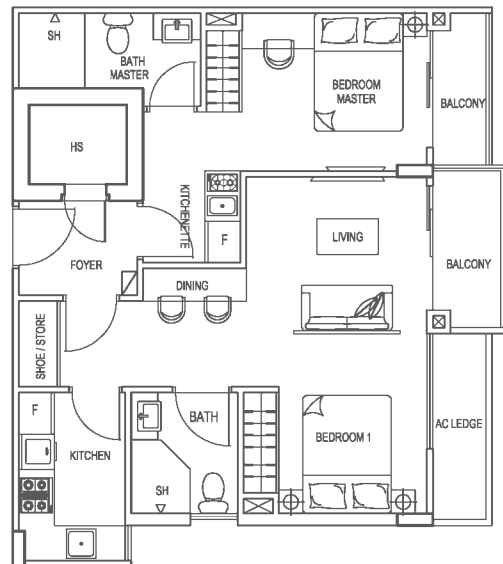
TYPE A(2)

Unit #02-05, #03-05, #04-05
Area 72 sqm / 775 sqft



TYPE A(3)

Unit #02-04, #03-04, #04-04
Area 72 sqm / 775 sqft

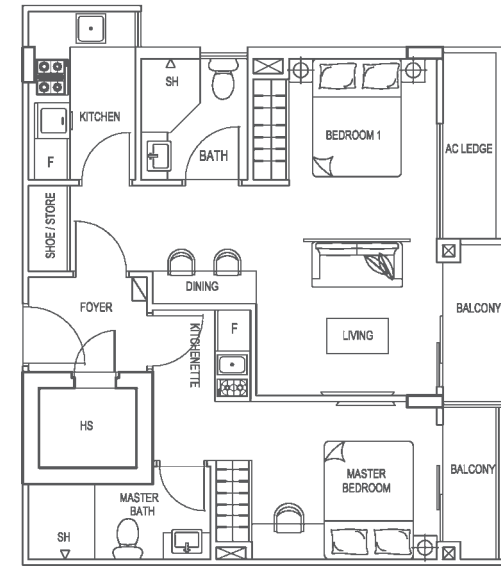


0 0.5m 1m 2m 3m

2-BEDROOM

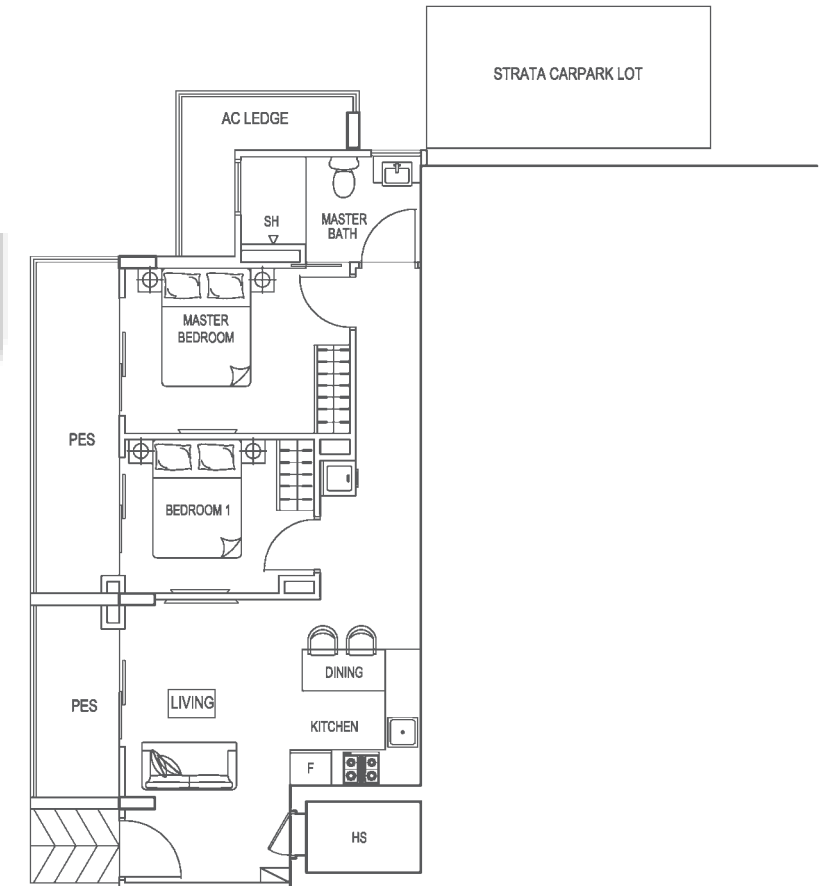
TYPE A(4)

Unit #02-03, #03-03, #04-03
Area 72 sqm / 775 sqft



TYPE D

Unit #01-02
Area 92 sqm / 990 sqft



0 0.5m 1m 2m 3m

3-BEDROOM - DUAL KEY

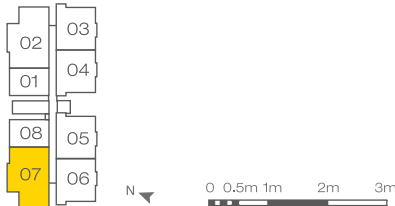
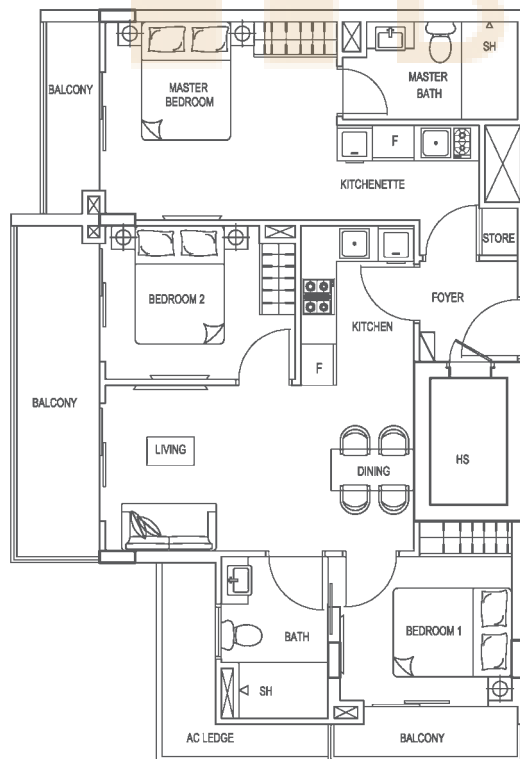
TYPE B(1)

Unit #02-07
Area 97 sqm / 1044 sqft



TYPE B(2)

Unit #03-07, #04-07
Area 97 sqm / 1044 sqft



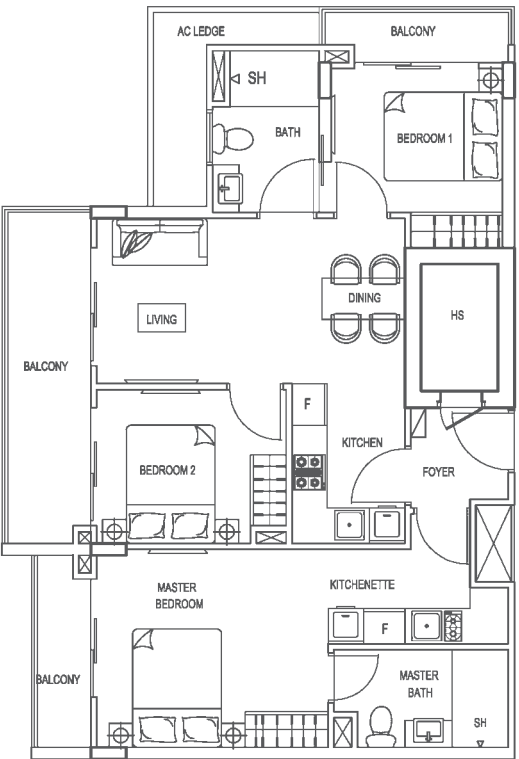
0 0.5m 1m 2m 3m

All floor plans are subjected to amendments as may be required or approved by the relevant authorities. All floor areas are approximate and subjected to final survey. Building Plan No.: A0659-00208-2011-BP01 approved on 14 January 2013

3-BEDROOM - DUAL KEY

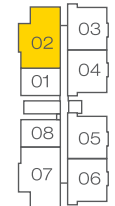
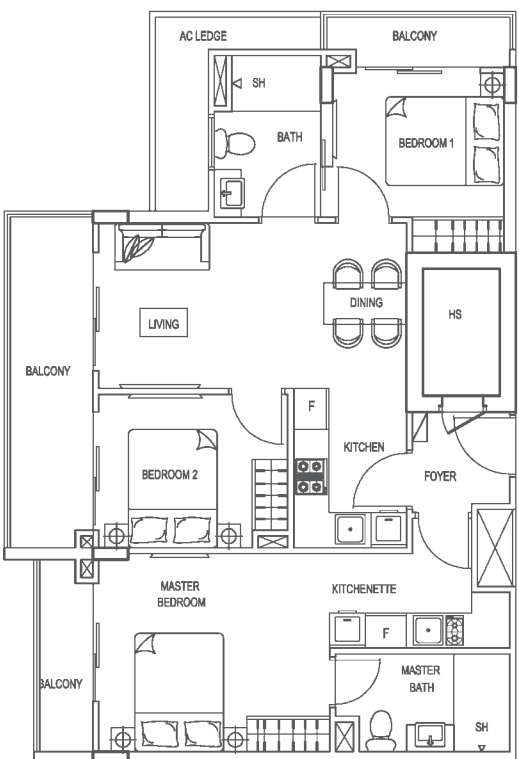
TYPE B(3)

Unit #02-02
Area 97 sqm / 1044 sqft



TYPE B(4)

Unit #03-02, #04-02
Area 97 sqm / 1044 sqft



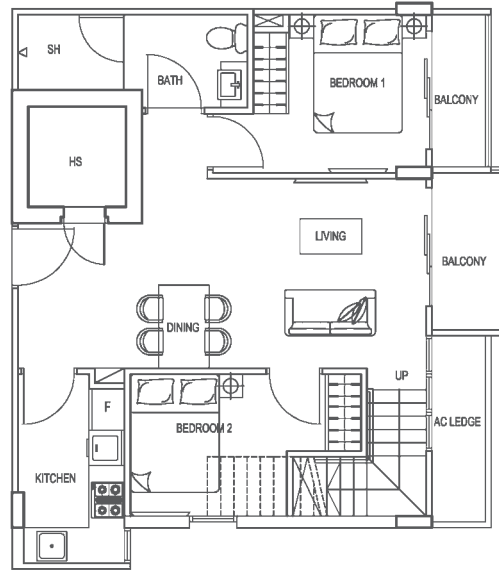
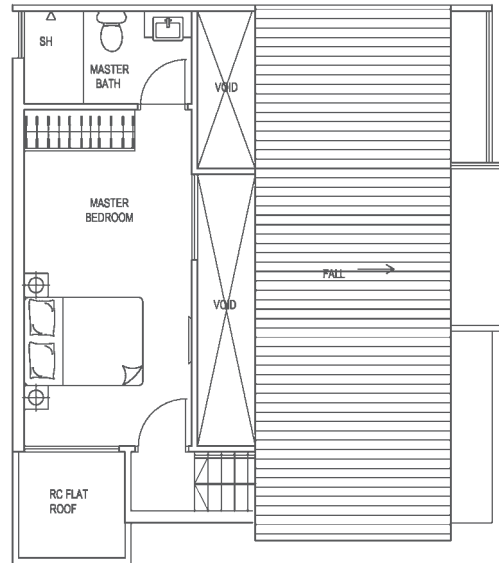
0 0.5m 1m 2m 3m

All floor plans are subjected to amendments as may be required or approved by the relevant authorities. All floor areas are approximate and subjected to final survey. Building Plan No.: A0659-00208-2011-BP01 approved on 14 January 2013

3-BEDROOM PENTHOUSE

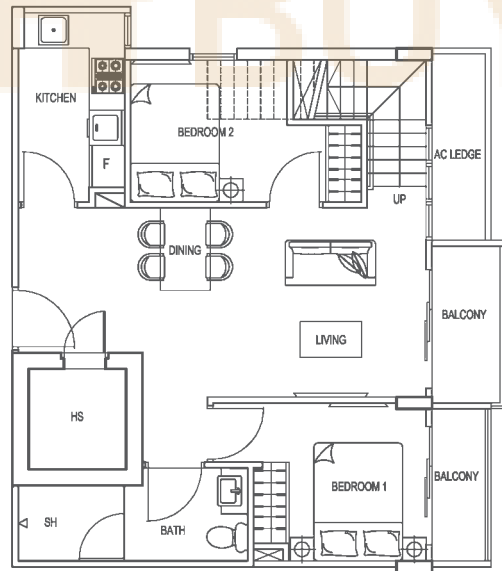
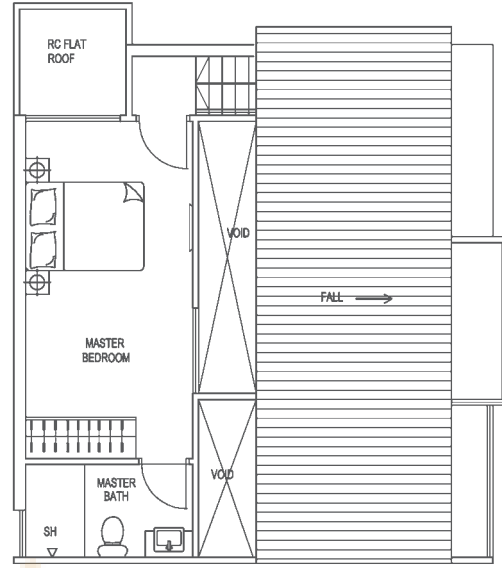
TYPE A1(1)

Unit #05-06
Area 118 sqm / 1270 sqft



TYPE A1(2)

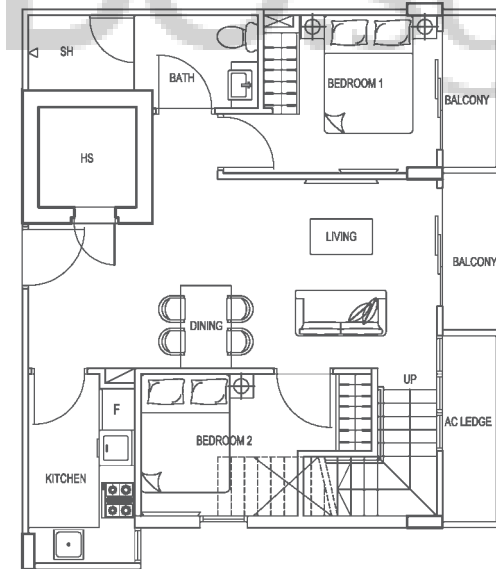
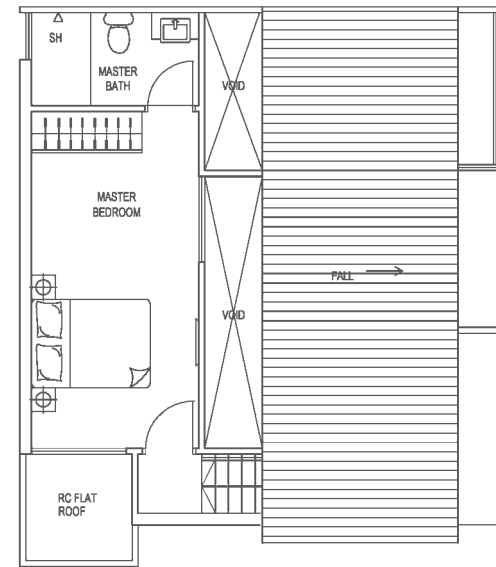
Unit #05-05
Area 118 sqm / 1270 sqft



3-BEDROOM PENTHOUSE

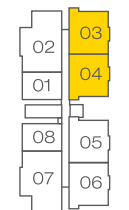
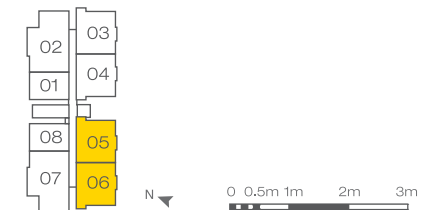
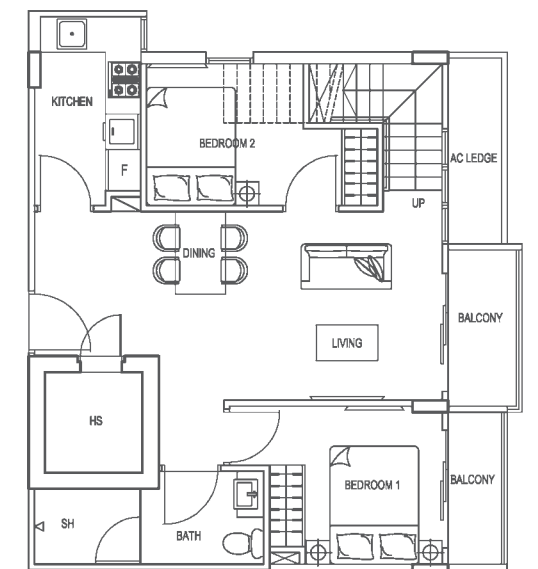
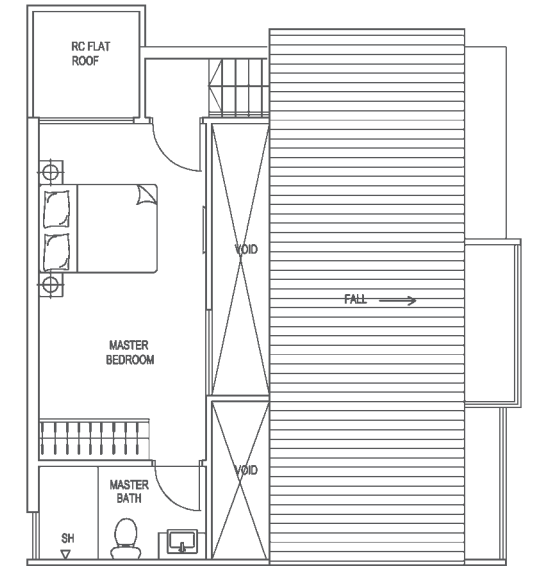
TYPE A1(3)

Unit #05-04
Area 118 sqm / 1270 sqft



TYPE A1(4)

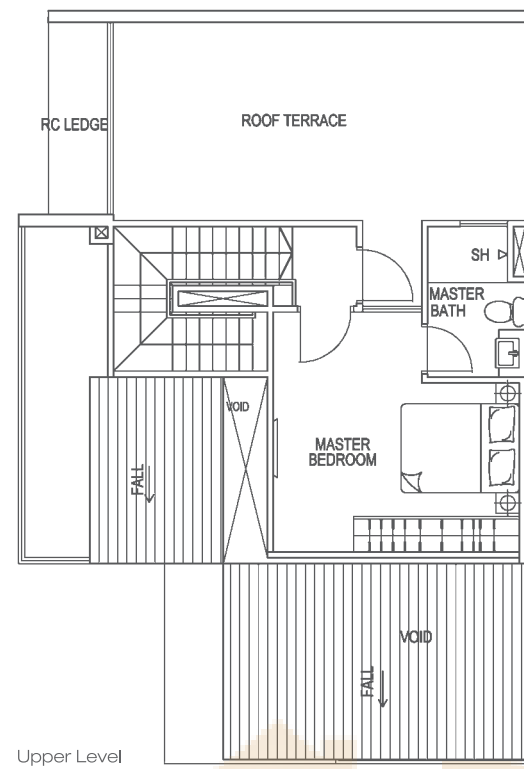
Unit #05-03
Area 118 sqm / 1270 sqft



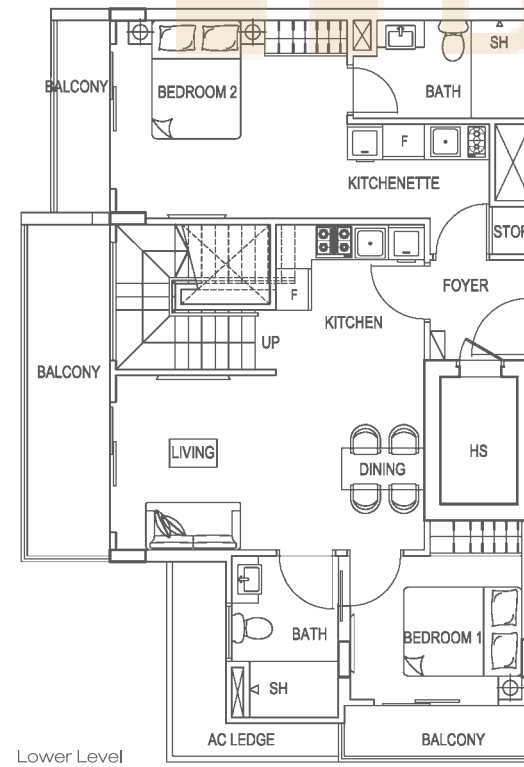
3-BEDROOM PENTHOUSE - DUAL KEY

TYPE B1(1)

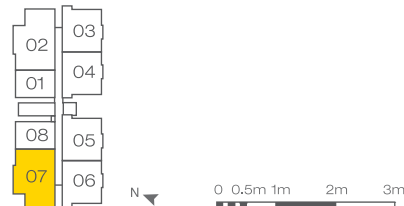
Unit #05-07
Area 151 sqm / 1625 sqft



Upper Level



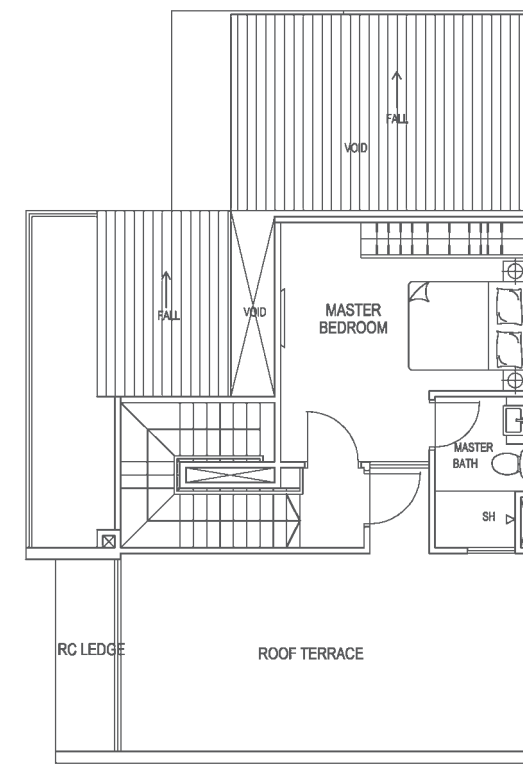
Lower Level



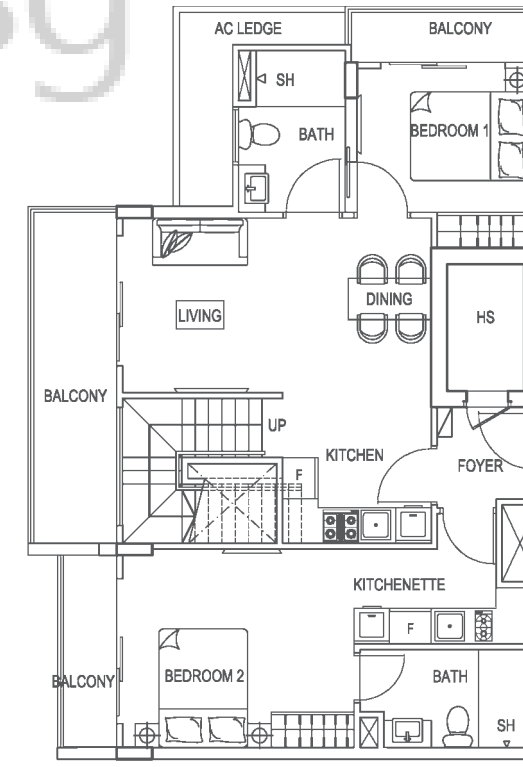
3-BEDROOM PENTHOUSE - DUAL KEY

TYPE B1(2)

Unit #05-02
Area 151 sqm / 1625 sqft



Upper Level



Lower Level

