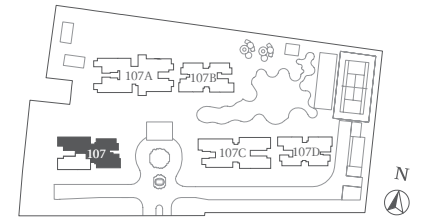


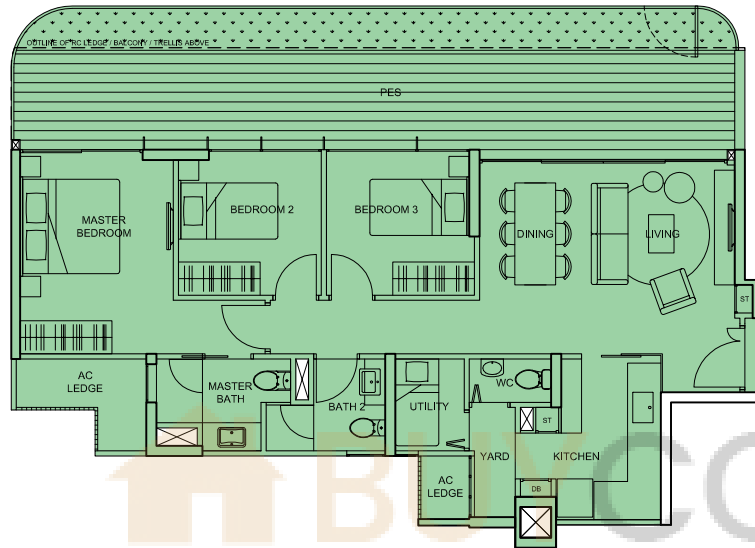
BLOCK 107

1ST STOREY

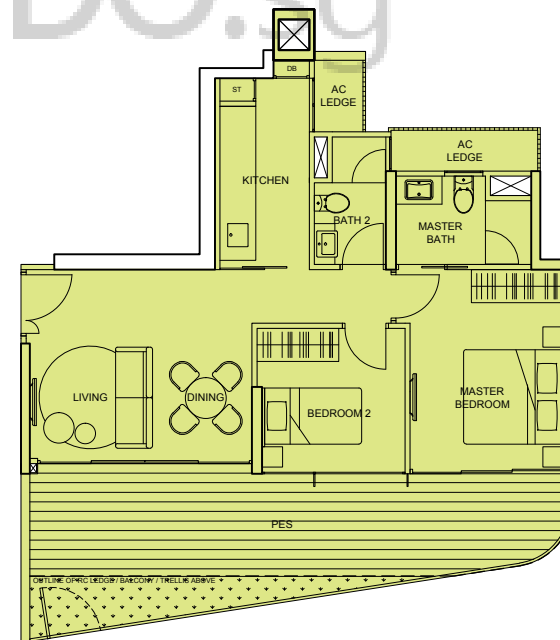
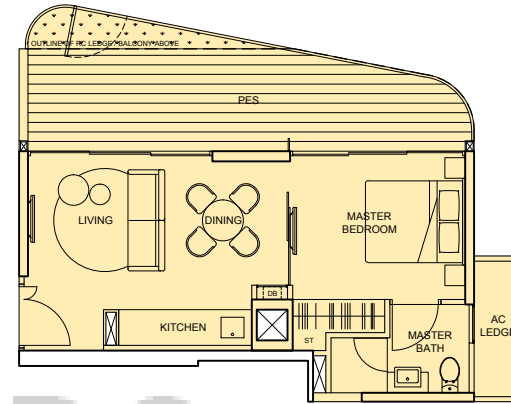
- PENTHOUSE (5BR + Family + Study)
- PENTHOUSE (4BR + Family)
- 4BR
- 3BR (Dual key)
- 3BR
- 2BR
- 1BR



Type C1(p1)
127 sqm (1,367 sq ft)
#01-03



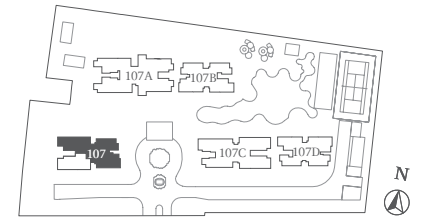
Type A1(p1)
58 sqm (624 sq ft)
#01-04



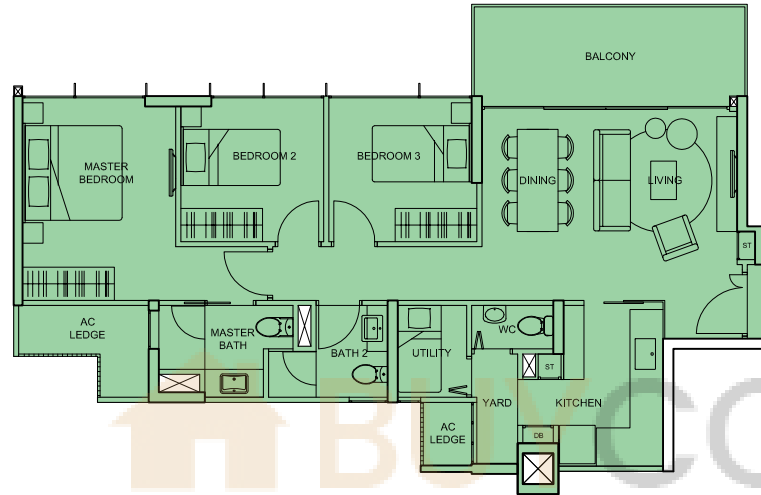
Type B1(p1)
90 sqm (969 sq ft)
#01-01

NOTE: The plans depicting the layouts of the units are correct at the time of printing and are subject to such amendments as may be required or approved by the relevant authorities. The plans are not drawn to scale and are for the purpose of visual presentation of the different available layouts. The relative distances depicted between the units are also not drawn to scale, and hence do not reflect the actual dimensions of, or distances between the units. The floor areas are estimates only and are subject to final survey.

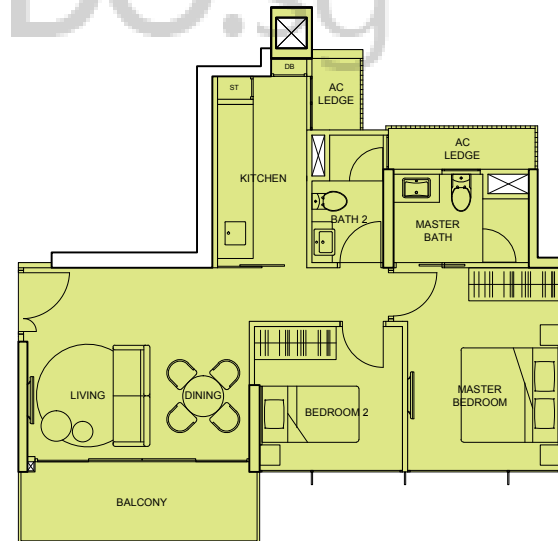
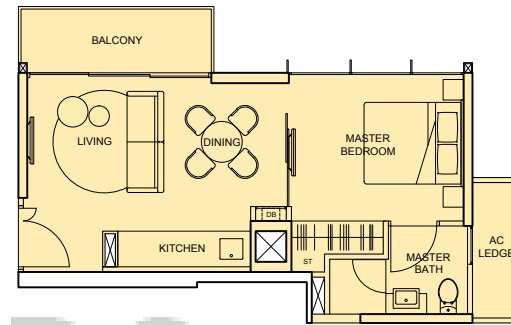
- PENTHOUSE (5BR + Family + Study)
- PENTHOUSE (4BR + Family)
- 4BR
- 3BR (Dual key)
- 3BR
- 2BR
- 1BR



Type C1
97 sqm (1,044 sq ft)
#02-03



Type A1
44 sqm (474 sq ft)
#02-04

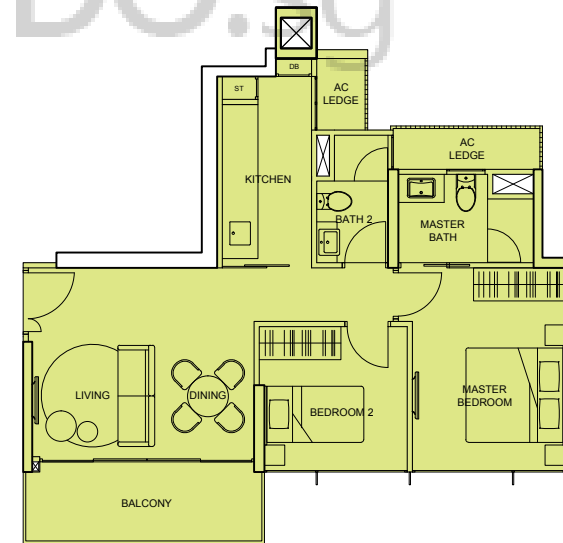
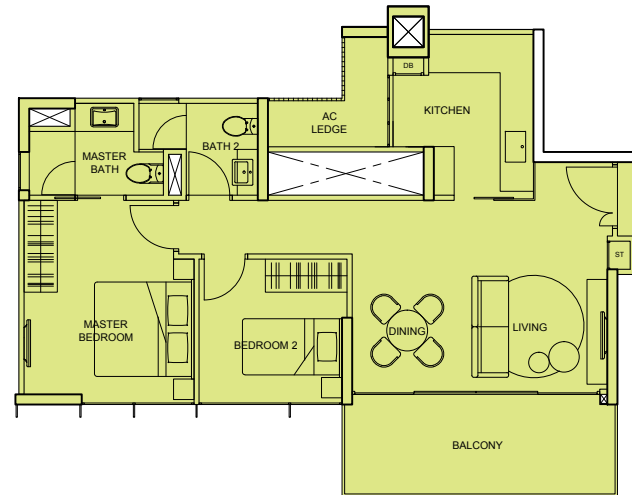
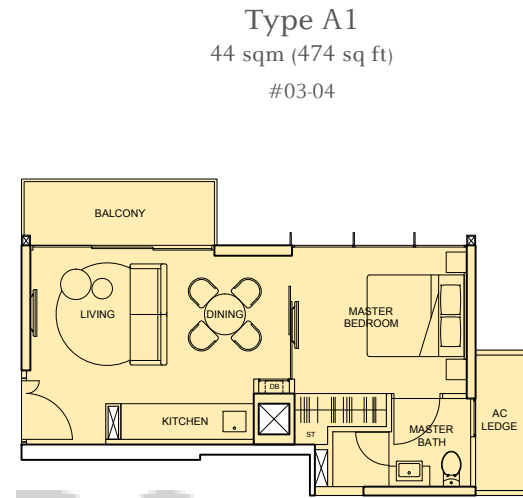
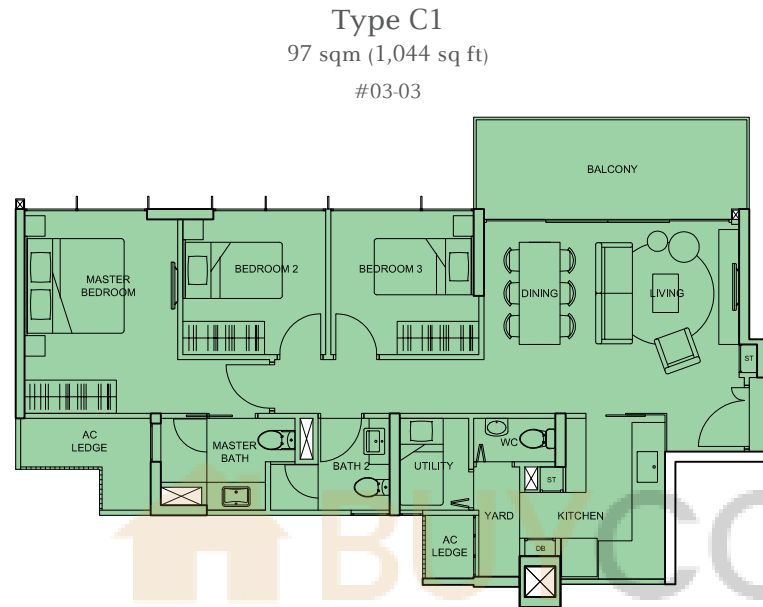
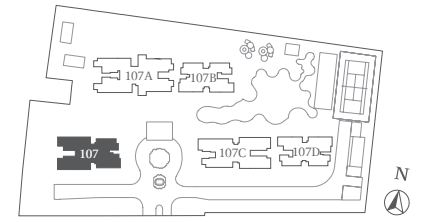


Type B1
70 sqm (753 sq ft)
#02-01

BLOCK 107

3RD STOREY

- PENTHOUSE (5BR + Family + Study)
- PENTHOUSE (4BR + Family)
- 4BR
- 3BR (Dual key)
- 3BR
- 2BR
- 1BR

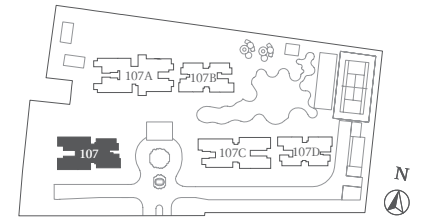


NOTE: The plans depicting the layouts of the units are correct at the time of printing and are subject to such amendments as may be required or approved by the relevant authorities. The plans are not drawn to scale and are for the purpose of visual presentation of the different available layouts. The relative distances depicted between the units are also not drawn to scale, and hence do not reflect the actual dimensions of, or distances between the units. The floor areas are estimates only and are subject to final survey.

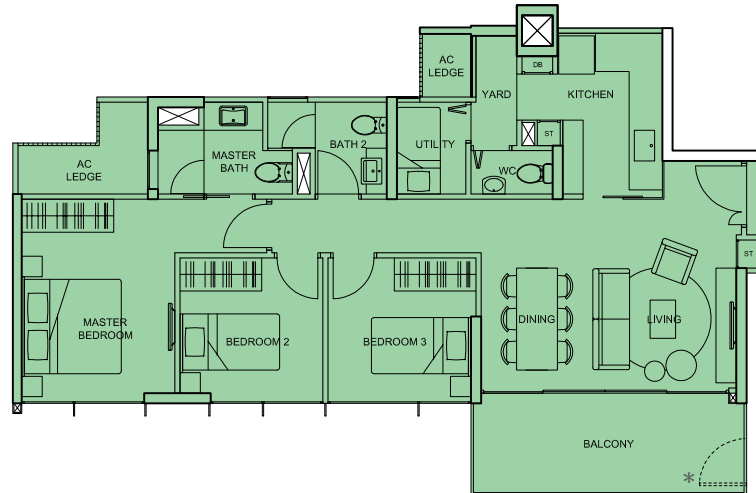
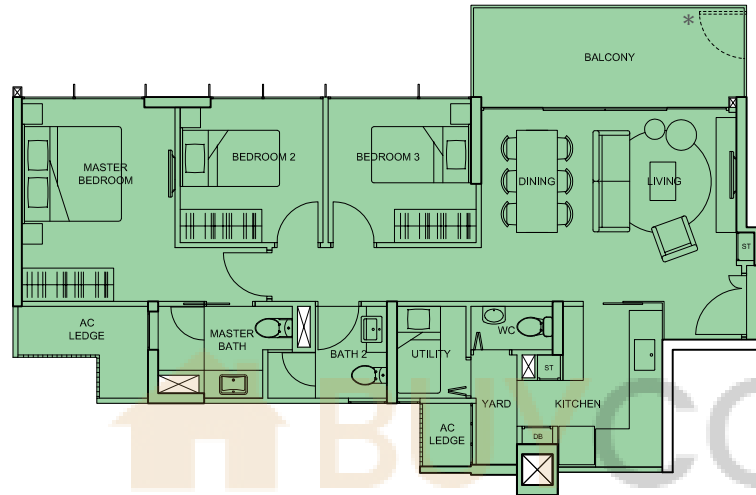
BLOCK 107

4TH to 16TH STOREY

- PENTHOUSE (5BR + Family + Study)
- PENTHOUSE (4BR + Family)
- 4BR
- 3BR (Dual key)
- 3BR
- 2BR
- 1BR

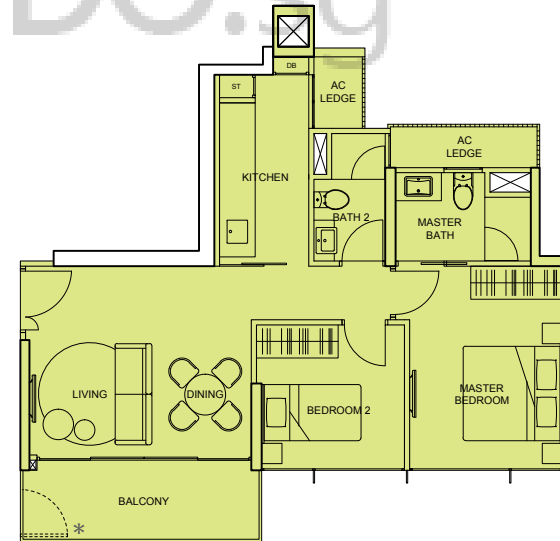
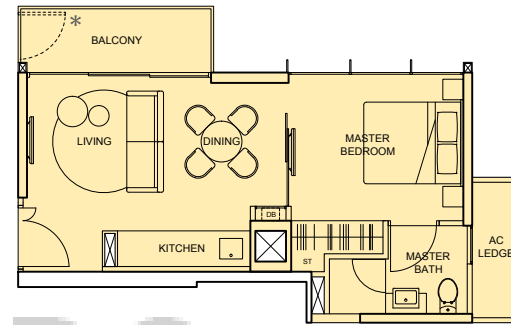


Type C1
97 sqm (1,044 sq ft)
#04-03 to #16-03



Type C1a
97 sqm (1,044 sq ft)
#04-02 to #16-02

Type A1
44 sqm (474 sq ft)
#04-04 to #16-04

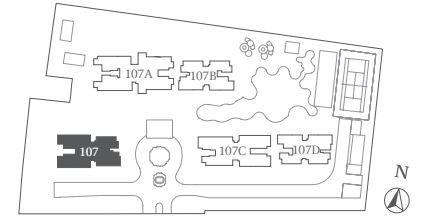


Type B1
70 sqm (753 sq ft)
#04-01 to #16-01

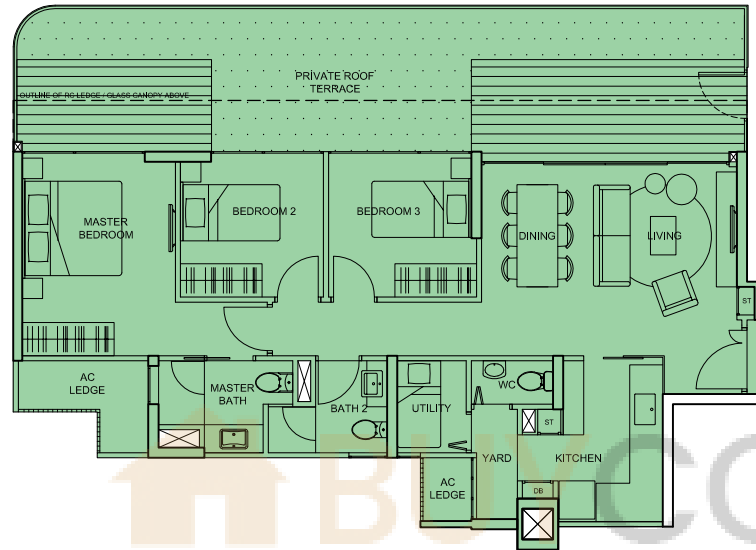
* Only for units on 6TH and 12TH storey.

NOTE: The plans depicting the layouts of the units are correct at the time of printing and are subject to such amendments as may be required or approved by the relevant authorities. The plans are not drawn to scale and are for the purpose of visual presentation of the different available layouts. The relative distances depicted between the units are also not drawn to scale, and hence do not reflect the actual dimensions of, or distances between the units. The floor areas are estimates only and are subject to final survey.

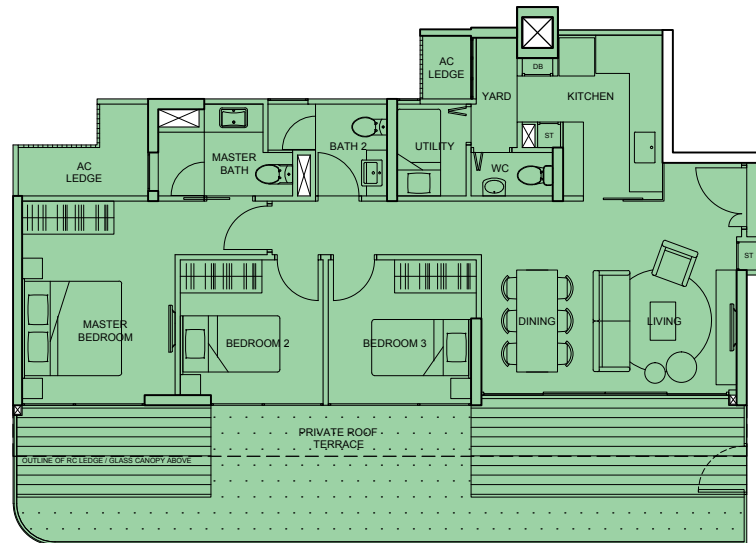
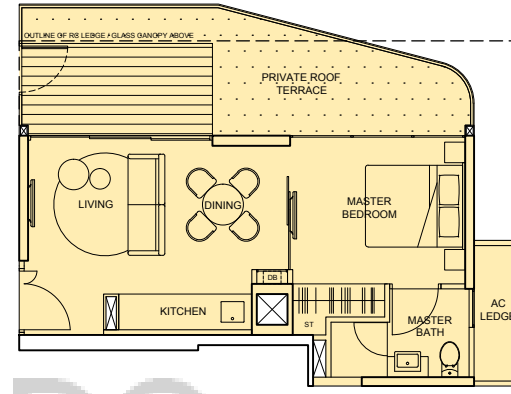
- PENTHOUSE (5BR + Family + Study)
- PENTHOUSE (4BR + Family)
- 4BR
- 3BR (Dual key)
- 3BR
- 2BR
- 1BR



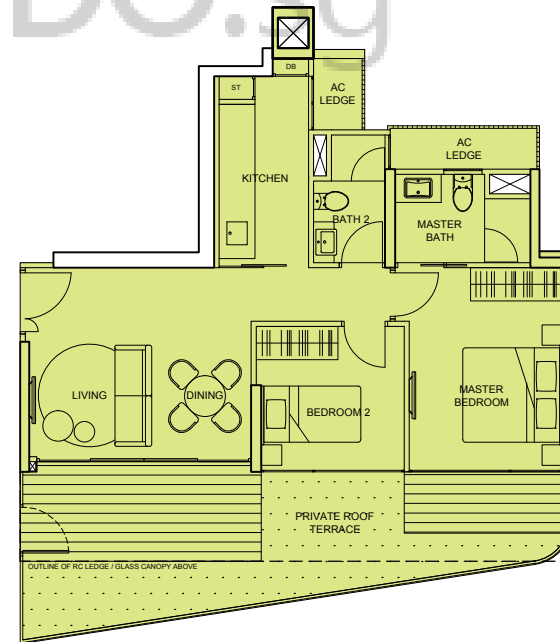
Type C1(r1)
128 sqm (1,378 sq ft)
#17-03



Type A1(r1)
59 sqm (635 sq ft)
#17-04



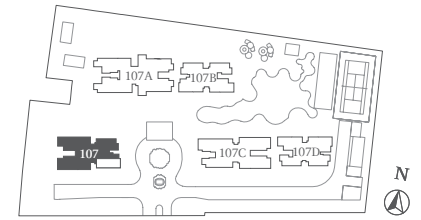
Type C1a(r1)
126 sqm (1,356 sq ft)
#17-02



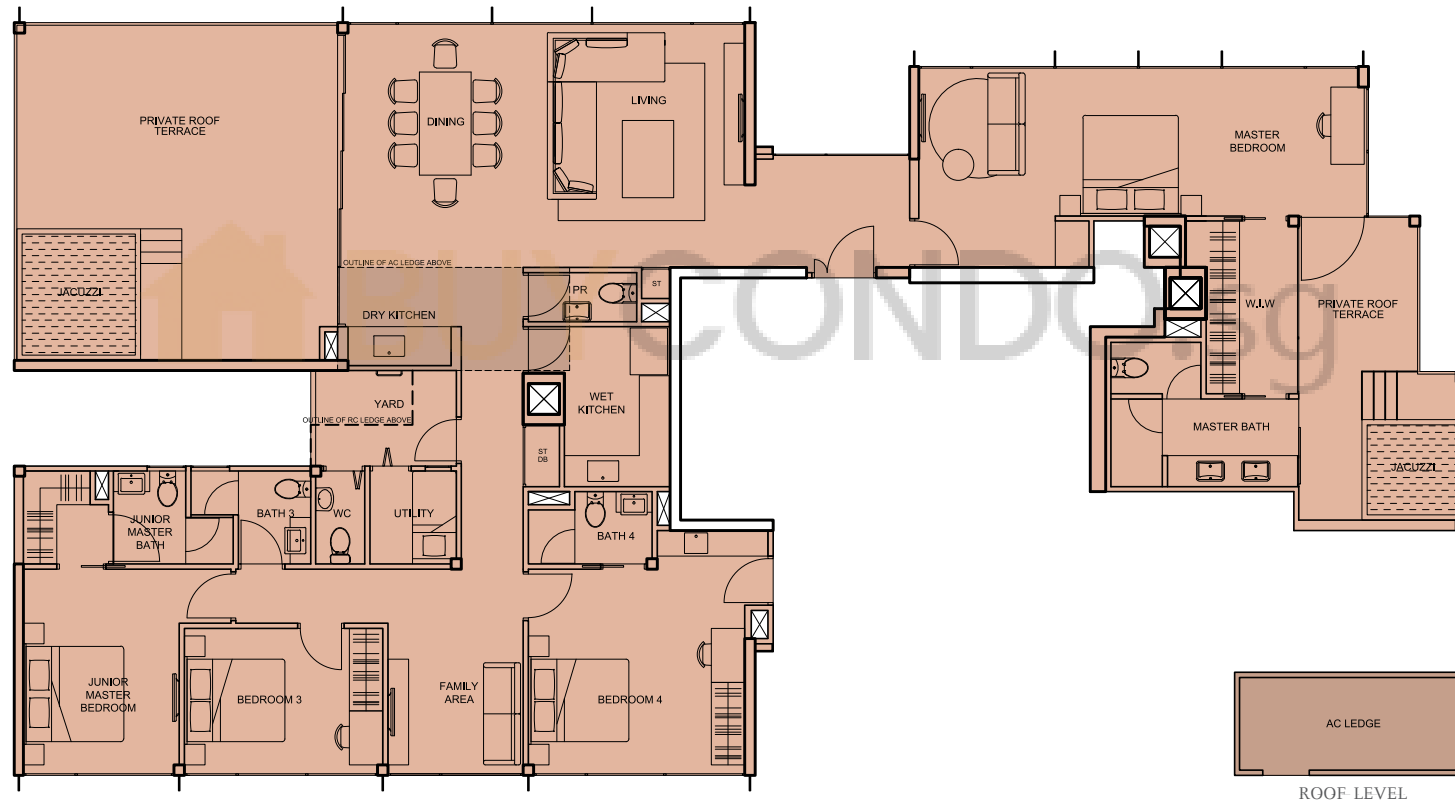
Type B1(r1)
91 sqm (980 sq ft)
#17-01

NOTE: The plans depicting the layouts of the units are correct at the time of printing and are subject to such amendments as may be required or approved by the relevant authorities. The plans are not drawn to scale and are for the purpose of visual presentation of the different available layouts. The relative distances depicted between the units are also not drawn to scale, and hence do not reflect the actual dimensions of, or distances between the units. The floor areas are estimates only and are subject to final survey.

- PENTHOUSE (5BR + Family + Study)
- PENTHOUSE (4BR + Family)
- 4BR
- 3BR (Dual key)
- 3BR
- 2BR
- 1BR

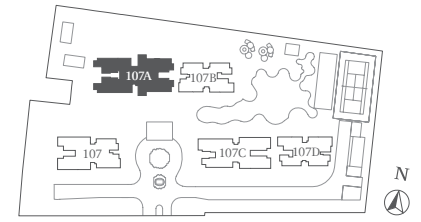


Type PH1
266 sqm (2,863 sq ft)
#18-03

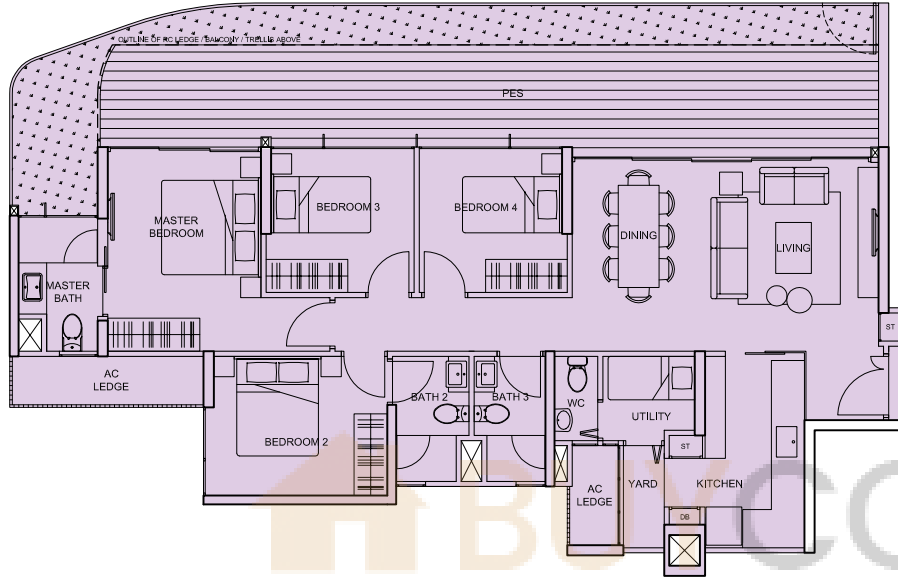


NOTE: The plans depicting the layouts of the units are correct at the time of printing and are subject to such amendments as may be required or approved by the relevant authorities. The plans are not drawn to scale and are for the purpose of visual presentation of the different available layouts. The relative distances depicted between the units are also not drawn to scale, and hence do not reflect the actual dimensions of, or distances between the units. The floor areas are estimates only and are subject to final survey.

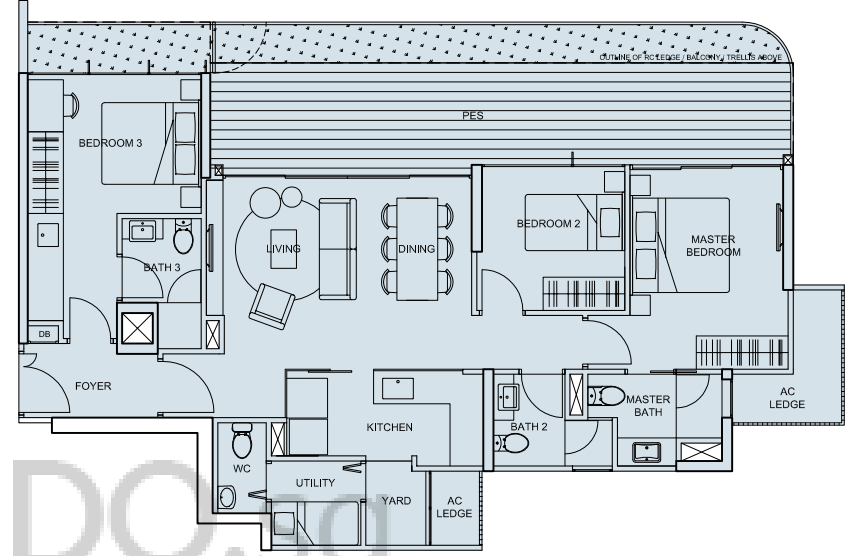
- PENTHOUSE (5BR + Family + Study)
- PENTHOUSE (4BR + Family)
- 4BR
- 3BR (Dual key)
- 3BR
- 2BR
- 1BR



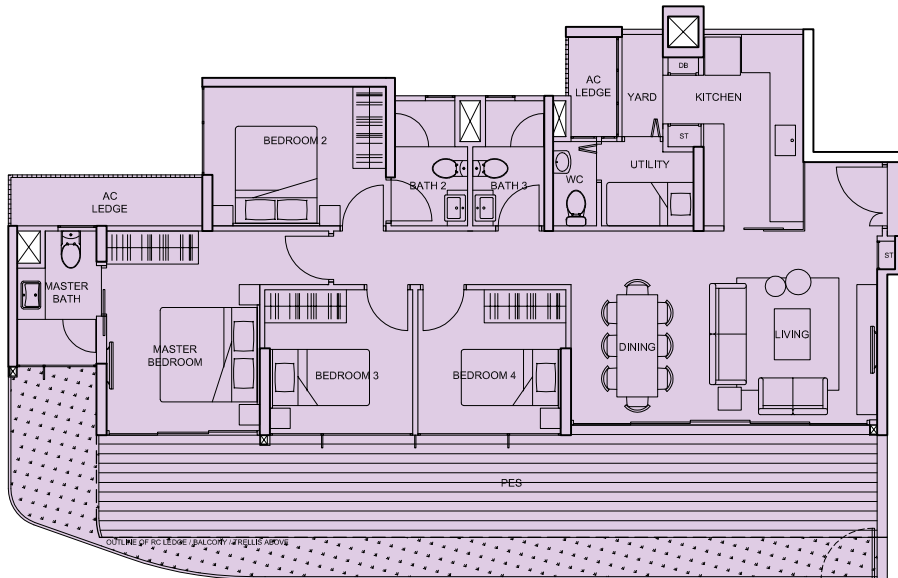
Type D1(p)
158 sqm (1,701 sq ft)
#01-07



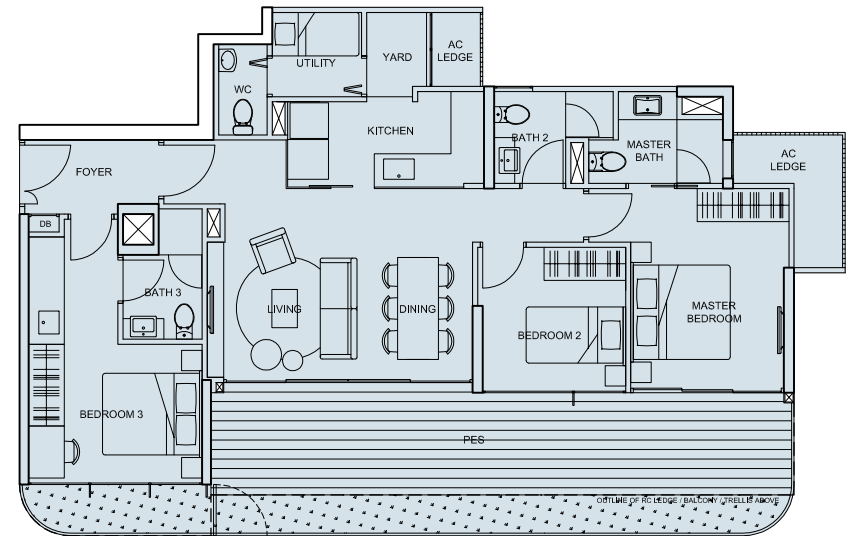
Type C(DK1)(p)
135 sqm (1,453 sq ft)
#01-08



Type D1a(p)
158 sqm (1,701 sq ft)
#01-06



Type C(DK2)(p)
135 sqm (1,453 sq ft)
#01-05

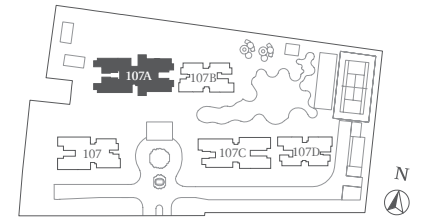


NOTE: The plans depicting the layouts of the units are correct at the time of printing and are subject to such amendments as may be required or approved by the relevant authorities. The plans are not drawn to scale and are for the purpose of visual presentation of the different available layouts. The relative distances depicted between the units are also not drawn to scale, and hence do not reflect the actual dimensions of, or distances between the units. The floor areas are estimates only and are subject to final survey.

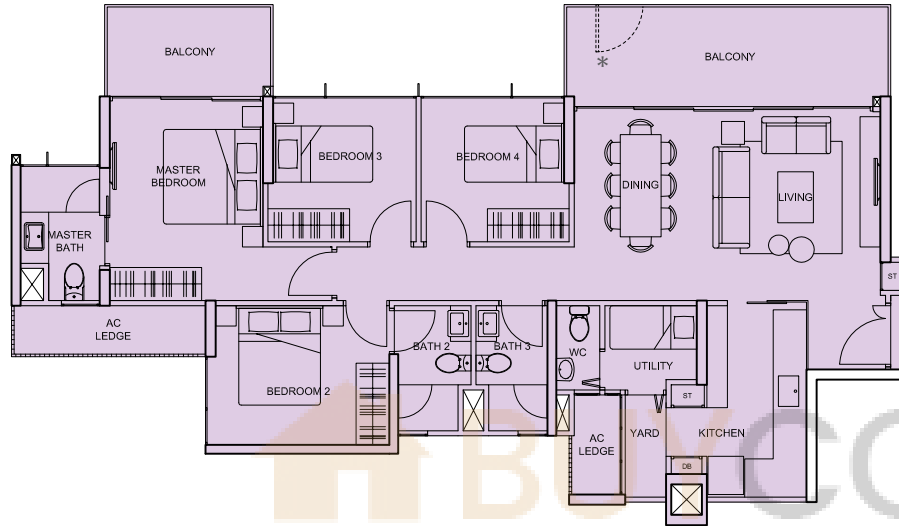
BLOCK 107A

2ND to 11TH, 15TH & 16TH STOREY

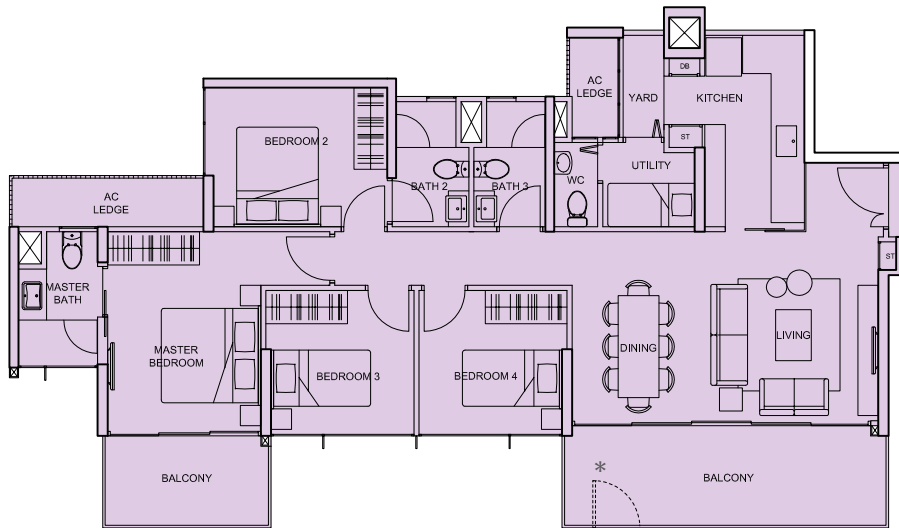
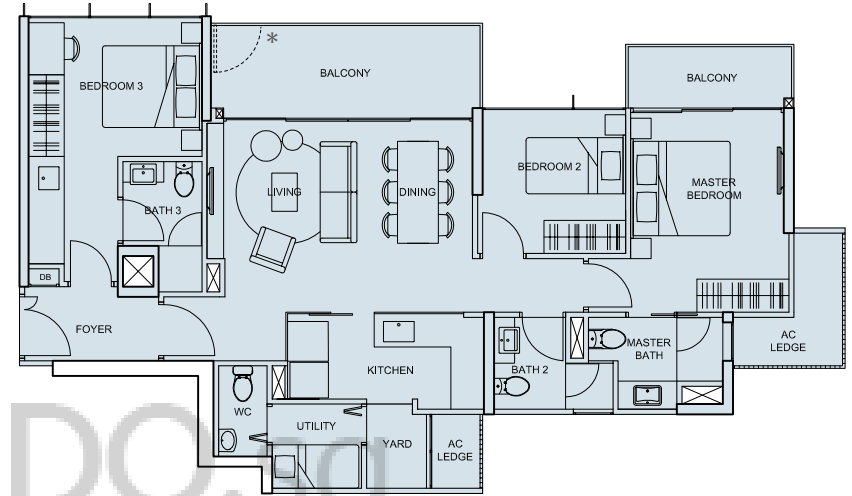
- PENTHOUSE (5BR + Family + Study)
- PENTHOUSE (4BR + Family)
- 4BR
- 3BR (Dual key)
- 3BR
- 2BR
- 1BR



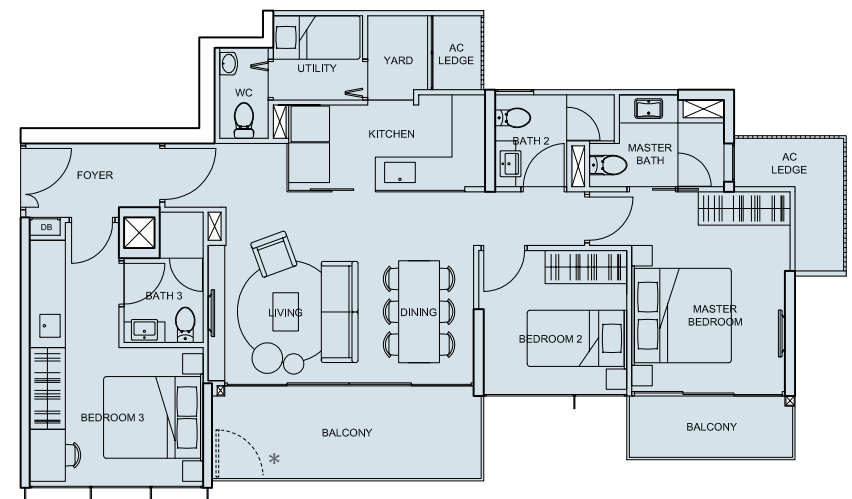
Type D1
127 sqm (1,367 sq ft)
#02-07 to #11-07, #15-07, #16-07



Type C(DK1)
113 sqm (1,216 sq ft)
#02-08 to #11-08, #15-08, #16-08



Type D1a
127 sqm (1,367 sq ft)
#02-06 to #11-06, #15-06, #16-06



Type C(DK2)
113 sqm (1,216 sq ft)
#02-05 to #11-05, #15-05, #16-05

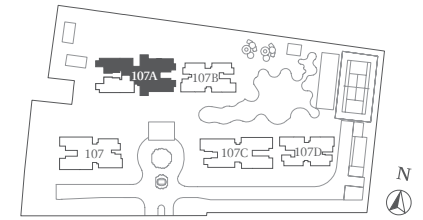
* Only for units on 6TH storey.

NOTE: The plans depicting the layouts of the units are correct at the time of printing and are subject to such amendments as may be required or approved by the relevant authorities. The plans are not drawn to scale and are for the purpose of visual presentation of the different available layouts. The relative distances depicted between the units are also not drawn to scale, and hence do not reflect the actual dimensions of, or distances between the units. The floor areas are estimates only and are subject to final survey.

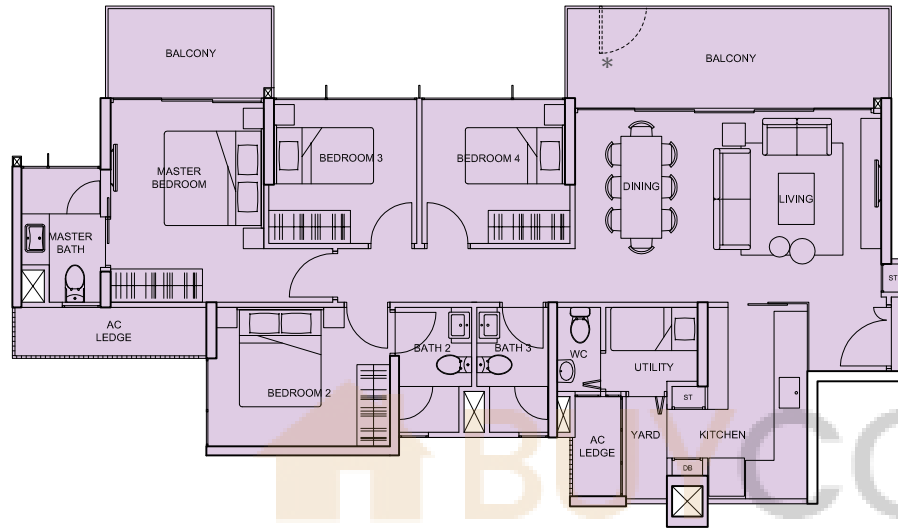
BLOCK 107A

12TH & 13TH STOREY

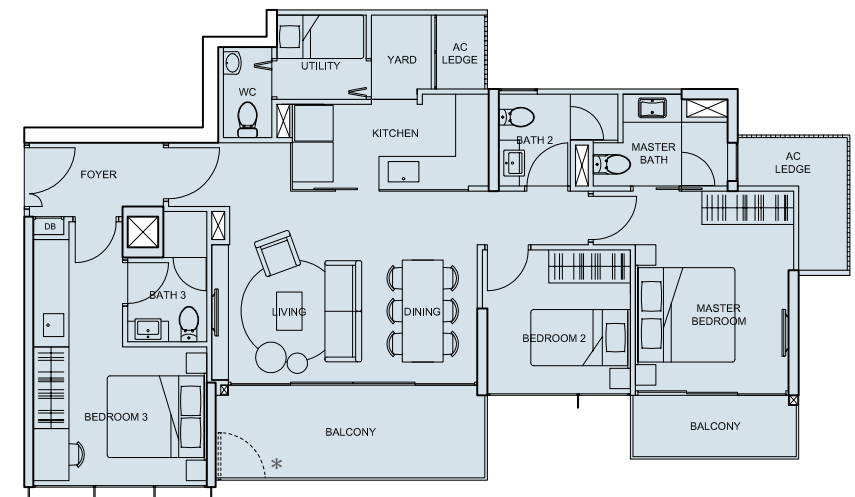
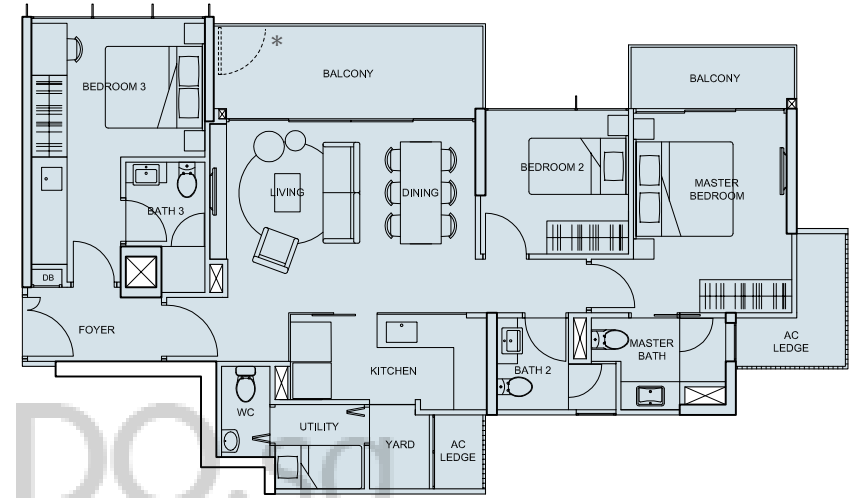
- PENTHOUSE (5BR + Family + Study)
- PENTHOUSE (4BR + Family)
- 4BR
- 3BR (Dual key)
- 3BR
- 2BR
- 1BR



Type D2
127 sqm (1,367 sq ft)
#12-07, #13-07



Type C(DK1)
113 sqm (1,216 sq ft)
#12-08, #13-08

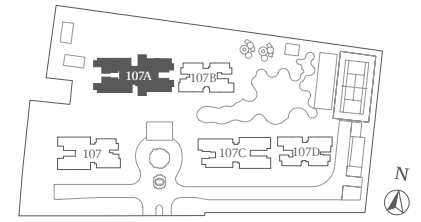


Type C(DK2)
113 sqm (1,216 sq ft)
#12-05, #13-05

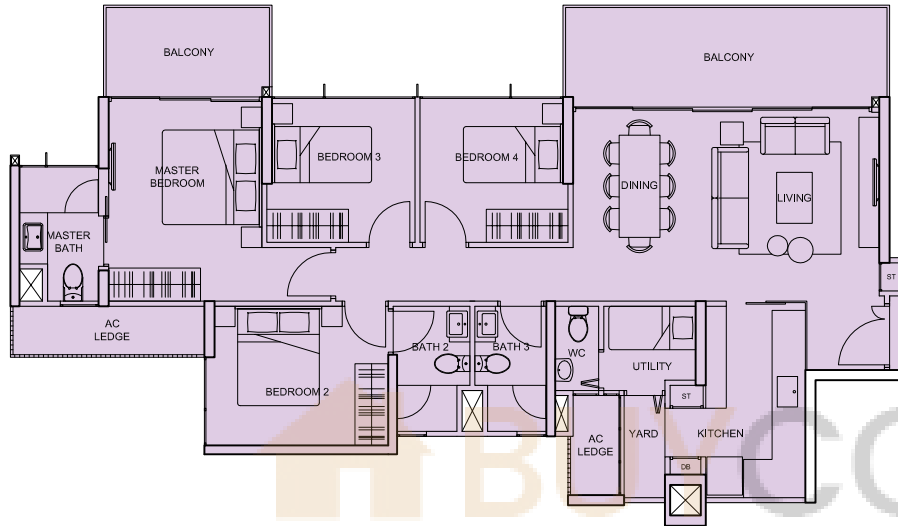
* Only for units on 12TH storey.

NOTE: The plans depicting the layouts of the units are correct at the time of printing and are subject to such amendments as may be required or approved by the relevant authorities. The plans are not drawn to scale and are for the purpose of visual presentation of the different available layouts. The relative distances depicted between the units are also not drawn to scale, and hence do not reflect the actual dimensions of, or distances between, the units. The floor areas are estimates only and are subject to final survey.

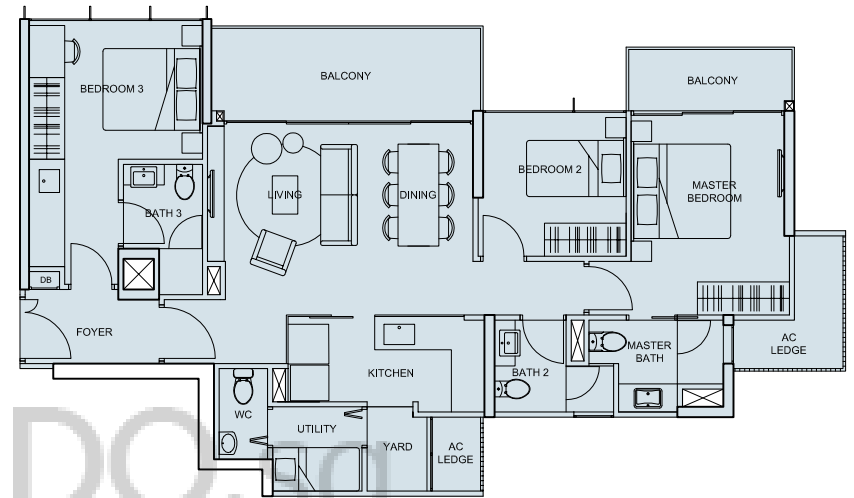
- PENTHOUSE (5BR + Family + Study)
- PENTHOUSE (4BR + Family)
- 4BR
- 3BR (Dual key)
- 3BR
- 2BR
- 1BR



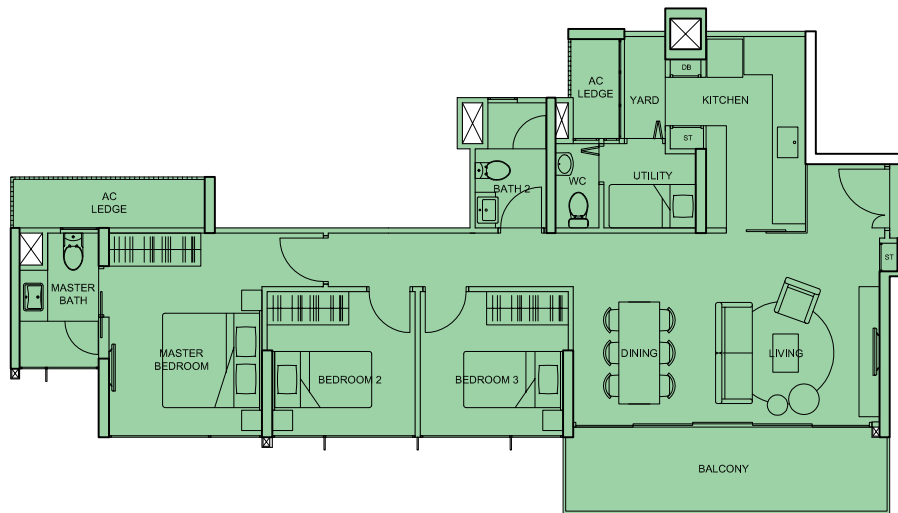
Type D1
127 sqm (1,367 sq ft)
#14-07



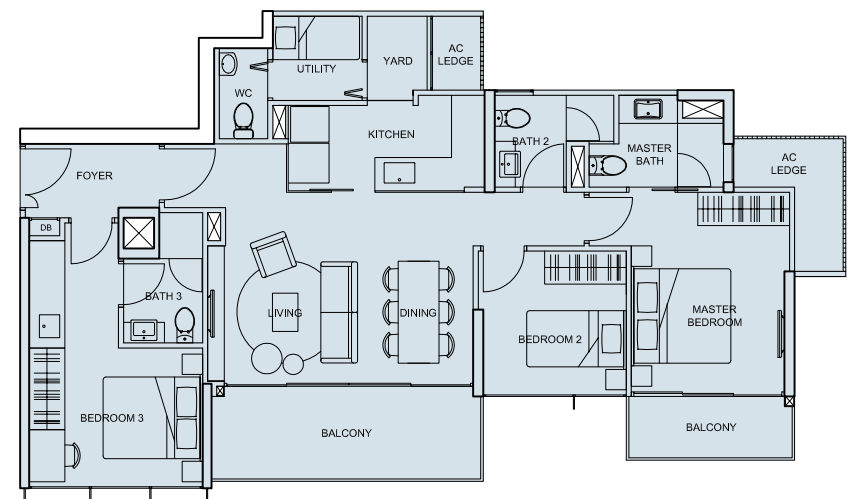
Type C(DK1)
113 sqm (1,216 sq ft)
#14-08



Type C3
105 sqm (1,130 sq ft)
#14-06

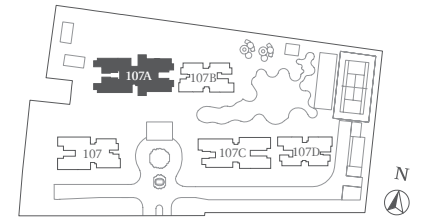


Type C(DK2)
113 sqm (1,216 sq ft)
#14-05

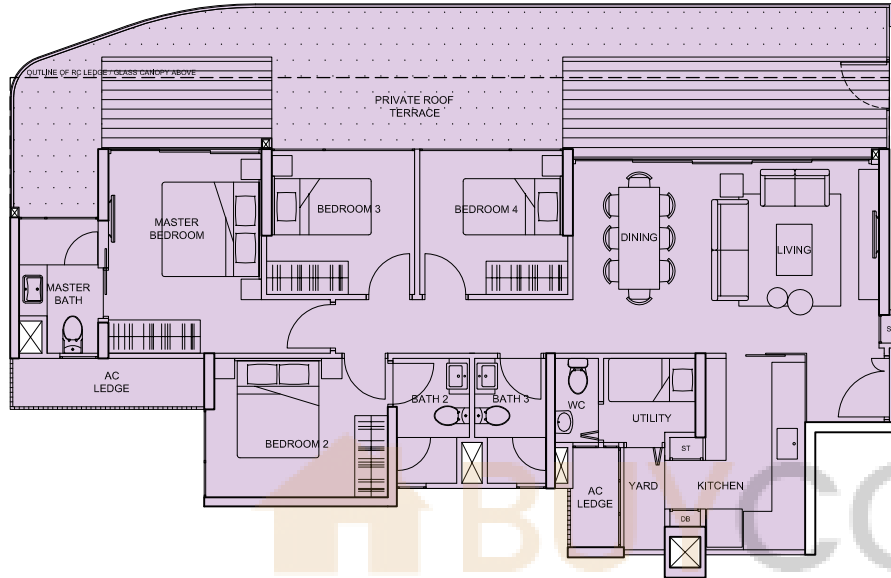


NOTE: The plans depicting the layouts of the units are correct at the time of printing and are subject to such amendments as may be required or approved by the relevant authorities. The plans are not drawn to scale and are for the purpose of visual presentation of the different available layouts. The relative distances depicted between the units are also not drawn to scale, and hence do not reflect the actual dimensions of, or distances between the units. The floor areas are estimates only and are subject to final survey.

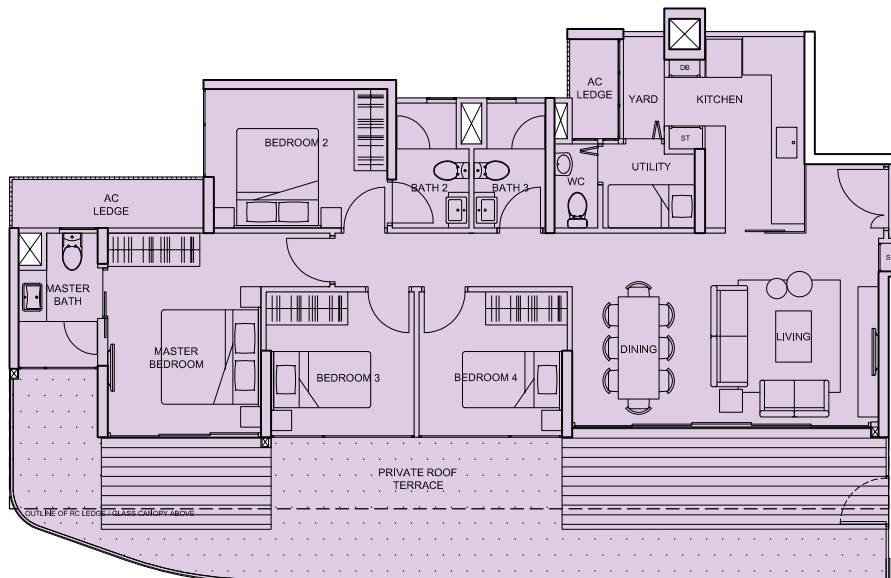
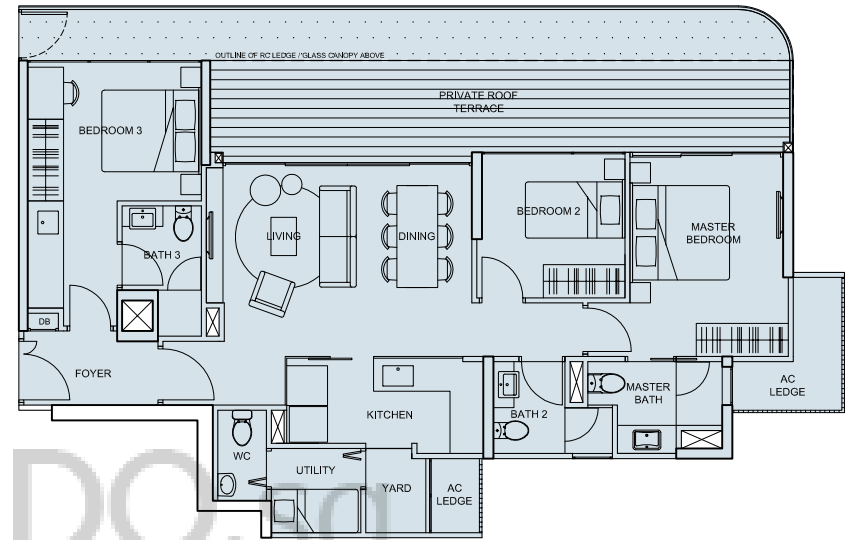
- PENTHOUSE (5BR + Family + Study)
- PENTHOUSE (4BR + Family)
- 4BR
- 3BR (Dual key)
- 3BR
- 2BR
- 1BR



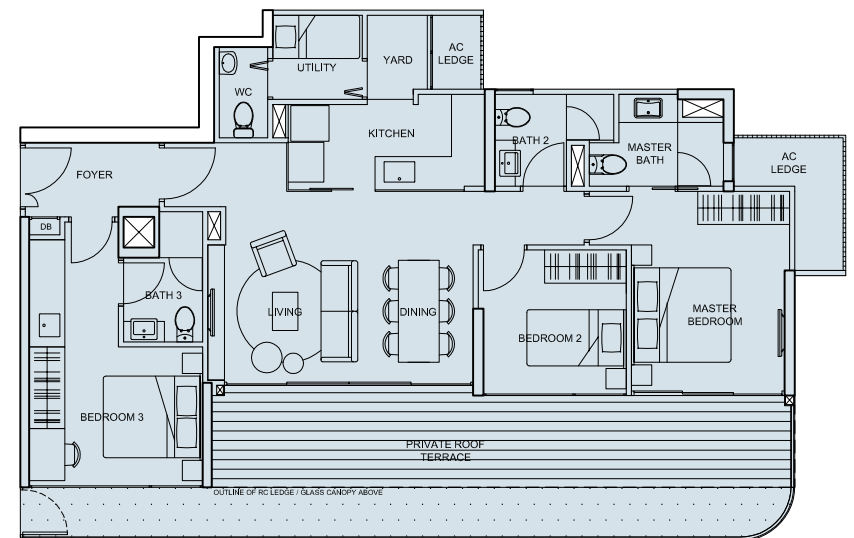
Type D1(r)
158 sqm (1,701 sq ft)
#17-07



Type C(DK1)(r)
136 sqm (1,464 sq ft)
#17-08



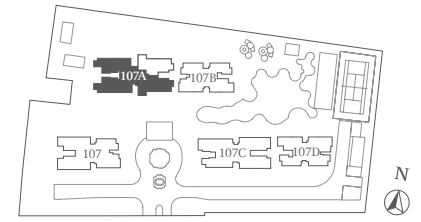
Type D1a(r)
158 sqm (1,701 sq ft)
#17-06



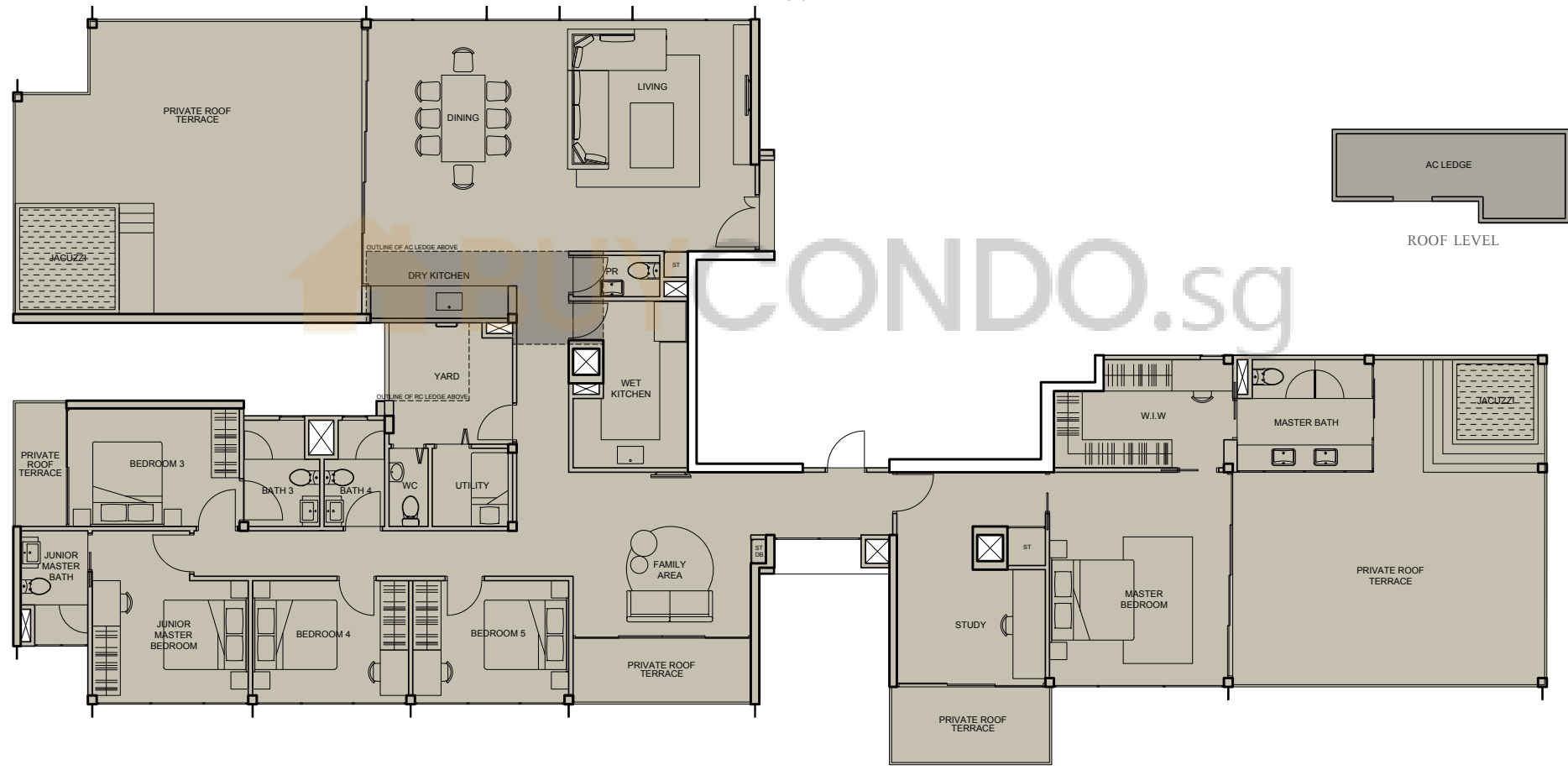
Type C(DK2)(r)
136 sqm (1,464 sq ft)
#17-05

NOTE: The plans depicting the layouts of the units are correct at the time of printing and are subject to such amendments as may be required or approved by the relevant authorities. The plans are not drawn to scale and are for the purpose of visual presentation of the different available layouts. The relative distances depicted between the units are also not drawn to scale, and hence do not reflect the actual dimensions of, or distances between the units. The floor areas are estimates only and are subject to final survey.

- PENTHOUSE (5BR + Family + Study)
- PENTHOUSE (4BR + Family)
- 4BR
- 3BR (Dual key)
- 3BR
- 2BR
- 1BR



Type PH3
361 sqm (3,886 sq ft)
#18-07

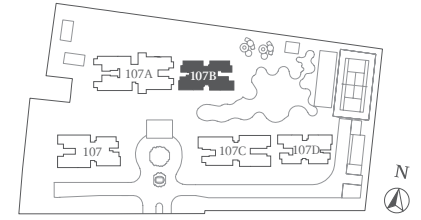


NOTE: The plans depicting the layouts of the units are correct at the time of printing and are subject to such amendments as may be required or approved by the relevant authorities. The plans are not drawn to scale and are for the purpose of visual presentation of the different available layouts. The relative distances depicted between the units are also not drawn to scale, and hence do not reflect the actual dimensions of, or distances between the units. The floor areas are estimates only and are subject to final survey.

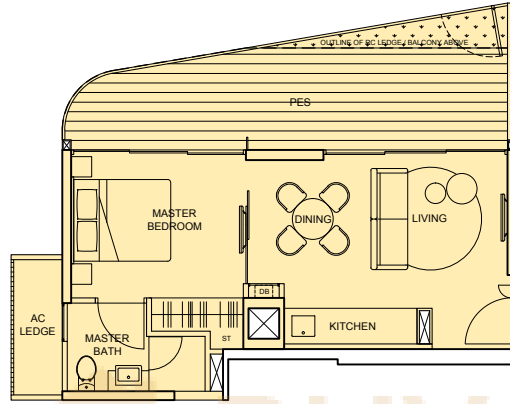
BLOCK 107B

1ST STOREY

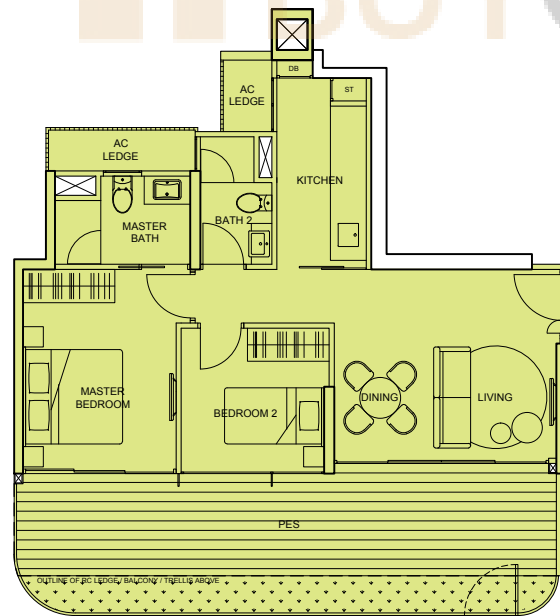
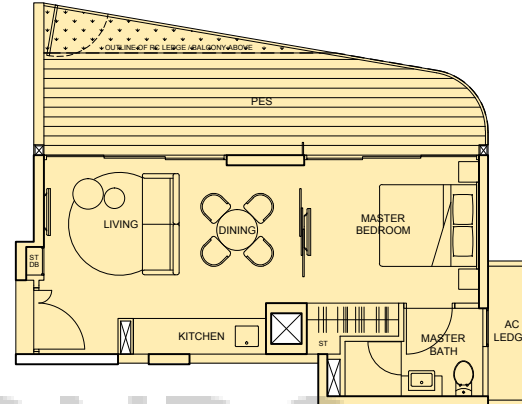
- PENTHOUSE (5BR + Family + Study)
- PENTHOUSE (4BR + Family)
- 4BR
- 3BR (Dual key)
- 3BR
- 2BR
- 1BR



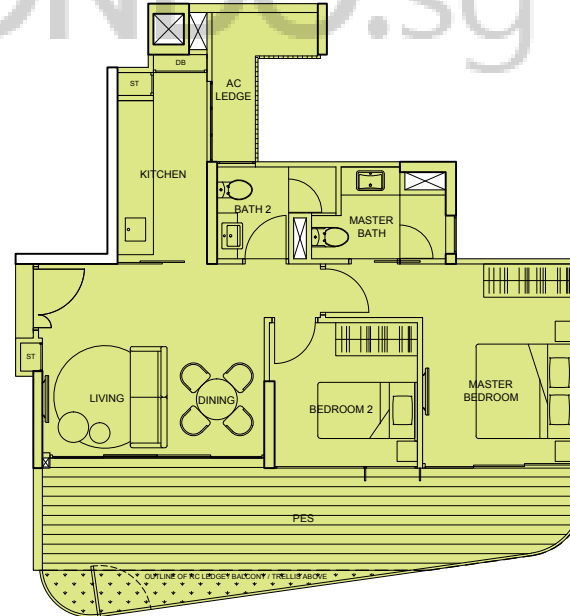
Type A1(p2)
58 sqm (624 sq ft)
#01-09



Type A2(p1)
59 sqm (635 sq ft)
#01-10



Type B1(p2)
93 sqm (1,001 sq ft)
#01-12



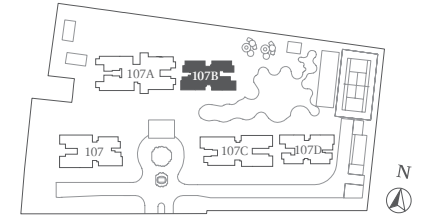
Type B2(p1)
88 sqm (947 sq ft)
#01-11

NOTE: The plans depicting the layouts of the units are correct at the time of printing and are subject to such amendments as may be required or approved by the relevant authorities. The plans are not drawn to scale and are for the purpose of visual presentation of the different available layouts. The relative distances depicted between the units are also not drawn to scale, and hence do not reflect the actual dimensions of, or distances between the units. The floor areas are estimates only and are subject to final survey.

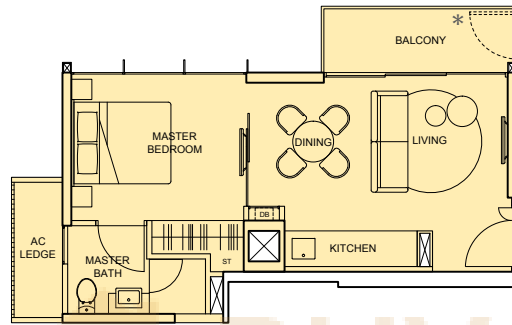
BLOCK 107B

2ND to 16TH STOREY

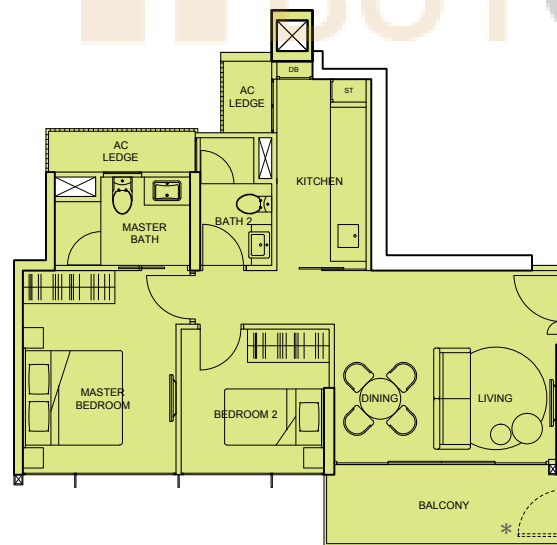
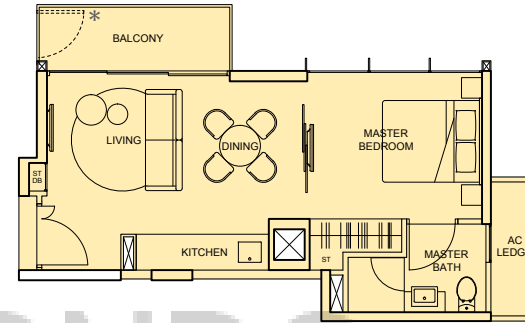
- PENTHOUSE (5BR + Family + Study)
- PENTHOUSE (4BR + Family)
- 4BR
- 3BR (Dual key)
- 3BR
- 2BR
- 1BR



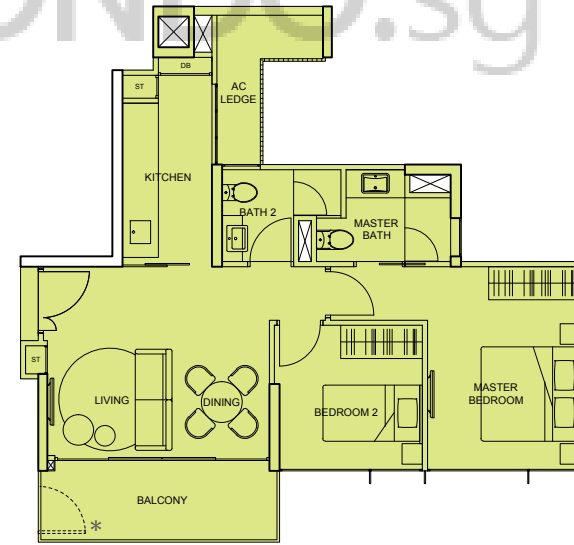
Type A1
44 sqm (474 sq ft)
#02-09 to #16-09



Type A2
45 sqm (484 sq ft)
#02-10 to #16-10



Type B1
70 sqm (753 sq ft)
#02-12 to #16-12



Type B2
70 sqm (753 sq ft)
#02-11 to #16-11

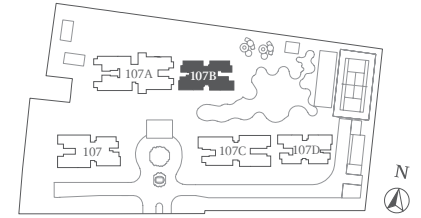
* Only for units on 6TH and 12TH storey.

NOTE: The plans depicting the layouts of the units are correct at the time of printing and are subject to such amendments as may be required or approved by the relevant authorities. The plans are not drawn to scale and are for the purpose of visual presentation of the different available layouts. The relative distances depicted between the units are also not drawn to scale, and hence do not reflect the actual dimensions of, or distances between the units. The floor areas are estimates only and are subject to final survey.

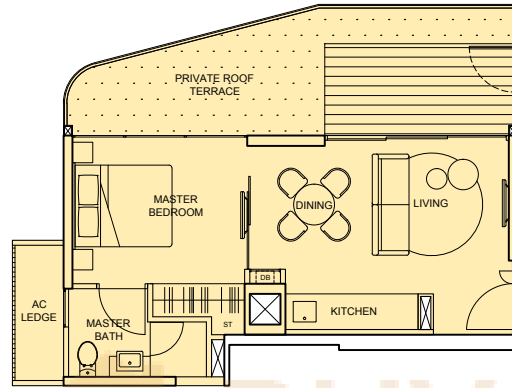
BLOCK 107B

17TH STOREY

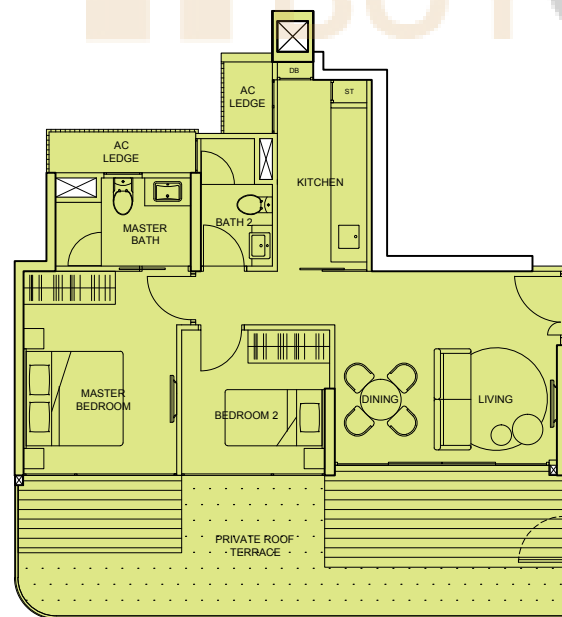
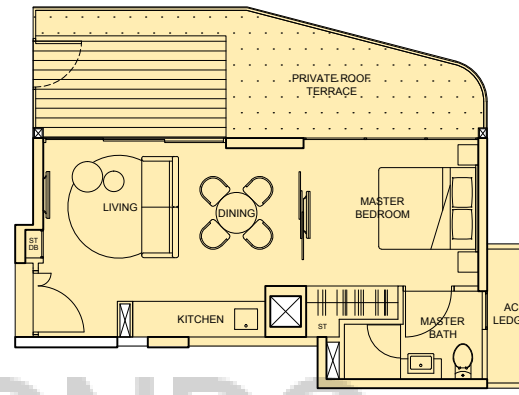
- PENTHOUSE (5BR + Family + Study)
- PENTHOUSE (4BR + Family)
- 4BR
- 3BR (Dual key)
- 3BR
- 2BR
- 1BR



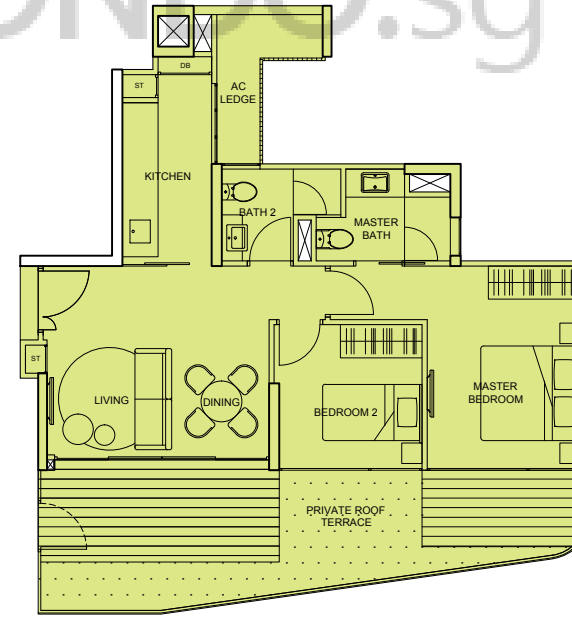
Type A1(r2)
58 sqm (624 sq ft)
#17-09



Type A2(r1)
60 sqm (646 sq ft)
#17-10



Type B1(r2)
94 sqm (1,012 sq ft)
#17-12



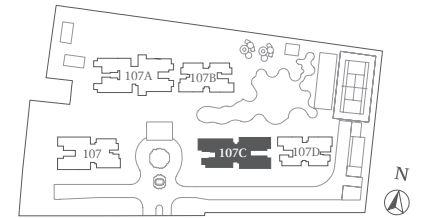
Type B2(r1)
89 sqm (958 sq ft)
#17-11

NOTE: The plans depicting the layouts of the units are correct at the time of printing and are subject to such amendments as may be required or approved by the relevant authorities. The plans are not drawn to scale and are for the purpose of visual presentation of the different available layouts. The relative distances depicted between the units are also not drawn to scale, and hence do not reflect the actual dimensions of, or distances between the units. The floor areas are estimates only and are subject to final survey.

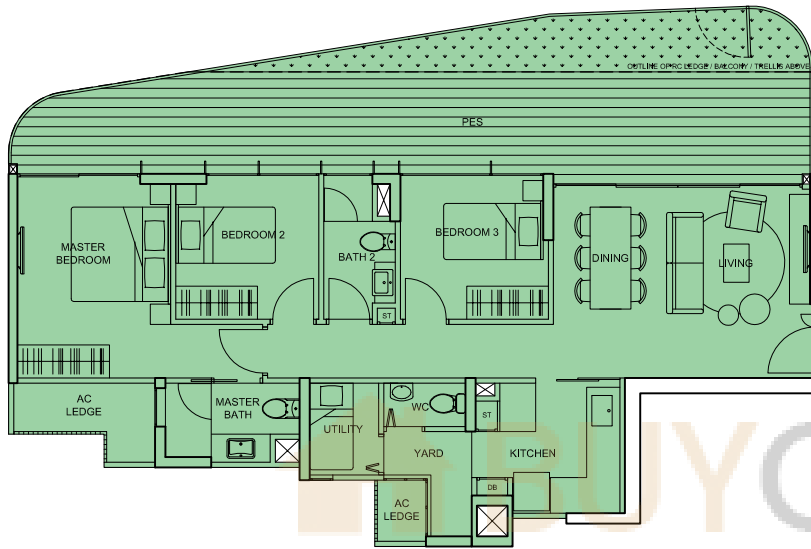
BLOCK 107C

1ST STOREY

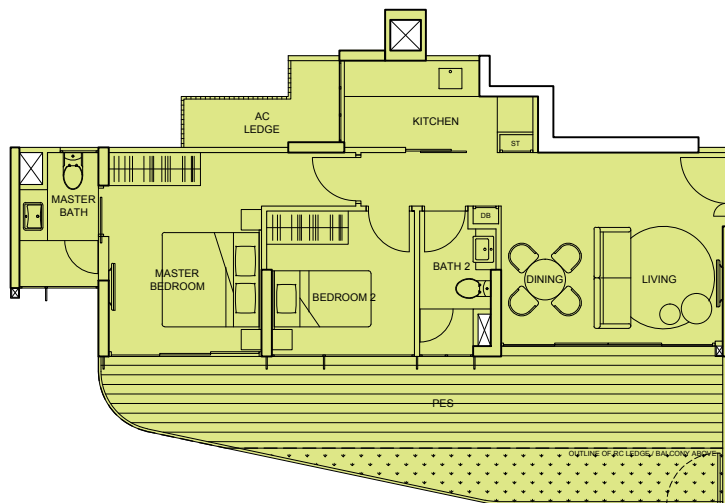
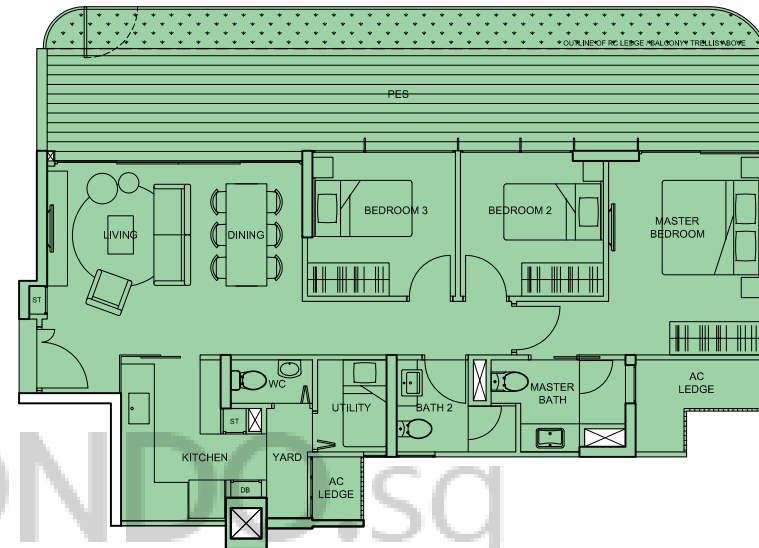
- PENTHOUSE (5BR + Family + Study)
- PENTHOUSE (4BR + Family)
- 4BR
- 3BR (Dual key)
- 3BR
- 2BR
- 1BR



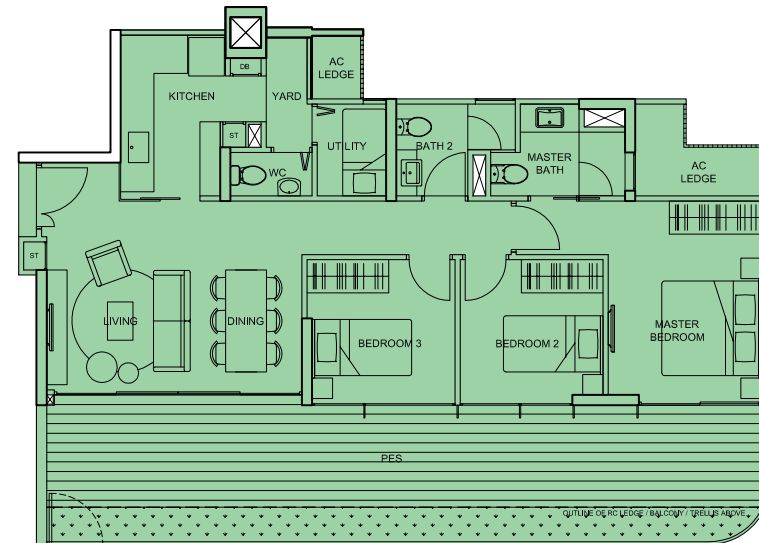
Type C2(p)
128 sqm (1,378 sq ft)
#01-17



Type C1(p2)
127 sqm (1,367 sq ft)
#01-18



Type B3(p)
94 sqm (1,012 sq ft)
#01-20



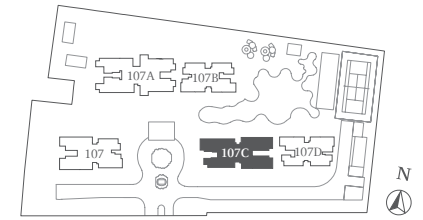
Type C1a(p)
126 sqm (1,356 sq ft)
#01-19

NOTE: The plans depicting the layouts of the units are correct at the time of printing and are subject to such amendments as may be required or approved by the relevant authorities. The plans are not drawn to scale and are for the purpose of visual presentation of the different available layouts. The relative distances depicted between the units are also not drawn to scale, and hence do not reflect the actual dimensions of, or distances between the units. The floor areas are estimates only and are subject to final survey.

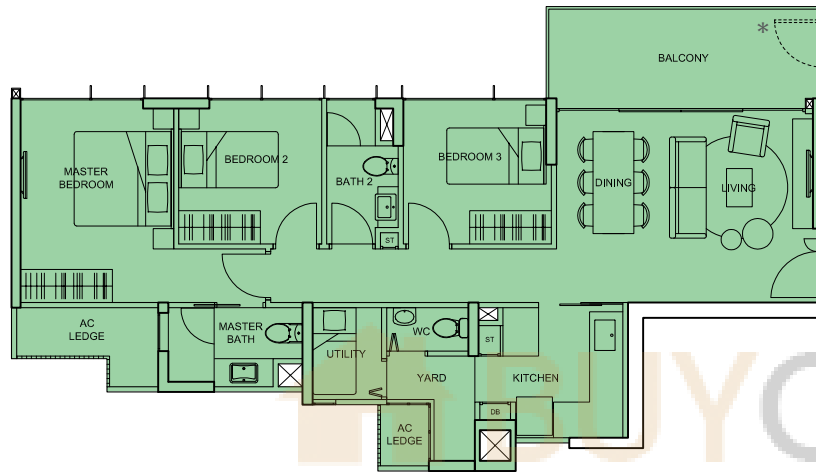
BLOCK 107C

2ND to 5TH, 8TH to 16TH STOREY

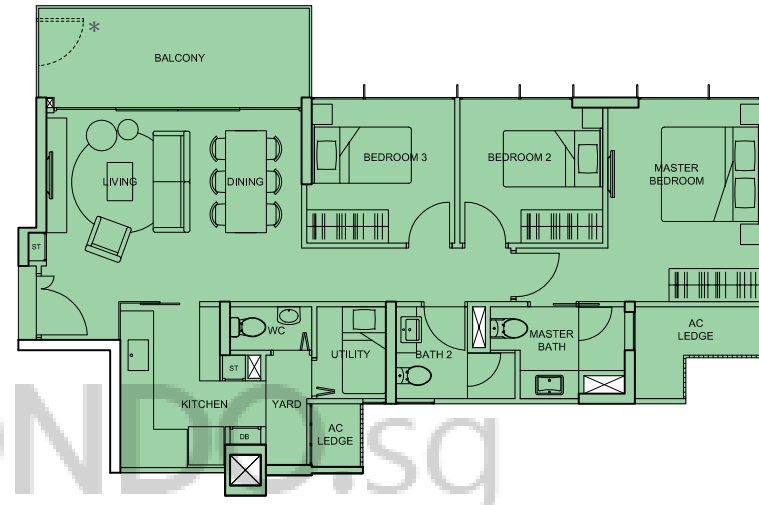
- PENTHOUSE (5BR + Family + Study)
- PENTHOUSE (4BR + Family)
- 4BR
- 3BR (Dual key)
- 3BR
- 2BR
- 1BR



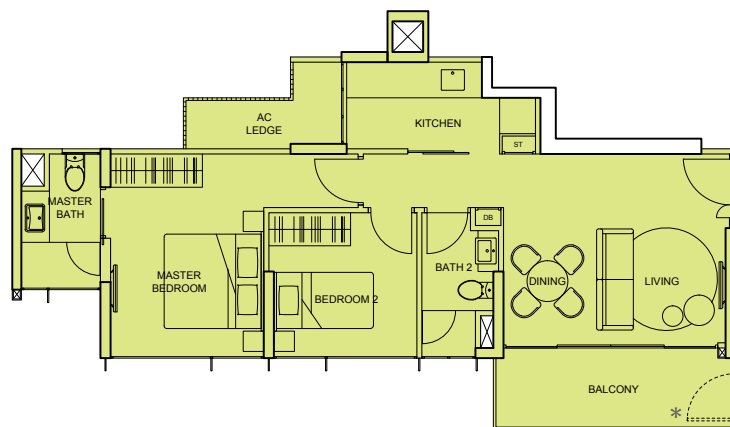
Type C2
98 sqm (1,055 sq ft)
#02-17 to #05-17, #08-17 to #16-17



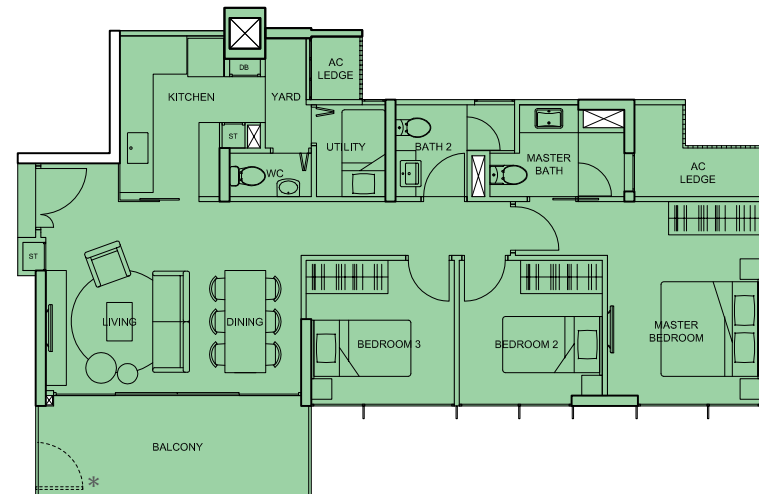
Type C1
97 sqm (1,044 sq ft)
#02-18 to #05-18, #08-18 to #16-18



Type B3
71 sqm (764 sq ft)
#02-20 to #05-20, #08-20 to #16-20



Type C1a
97 sqm (1,044 sq ft)
#02-19 to #05-19, #08-19 to #16-19



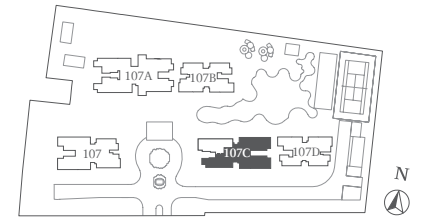
* Only for units on 12TH storey.

NOTE: The plans depicting the layouts of the units are correct at the time of printing and are subject to such amendments as may be required or approved by the relevant authorities. The plans are not drawn to scale and are for the purpose of visual presentation of the different available layouts. The relative distances depicted between the units are also not drawn to scale, and hence do not reflect the actual dimensions of, or distances between the units. The floor areas are estimates only and are subject to final survey.

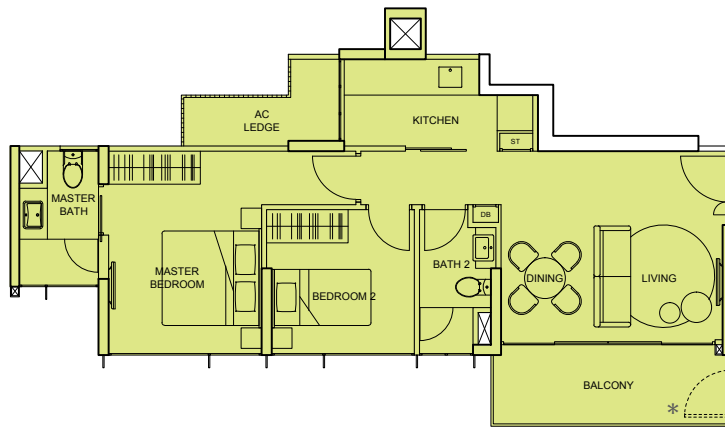
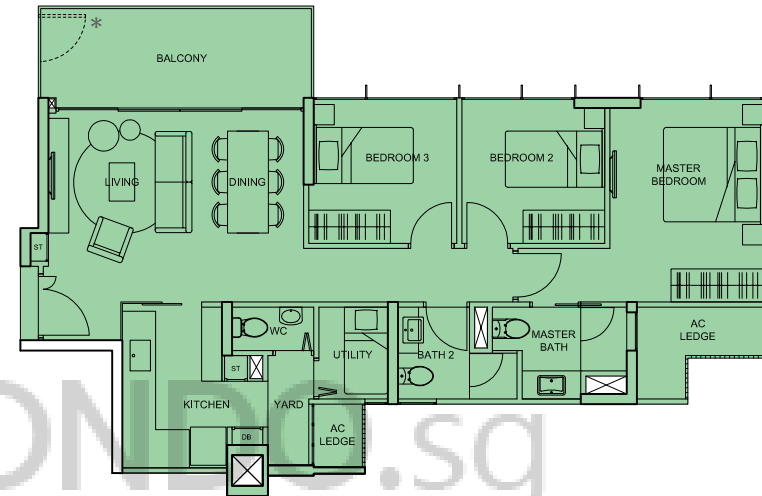
BLOCK 107C

6TH & 7TH STOREY

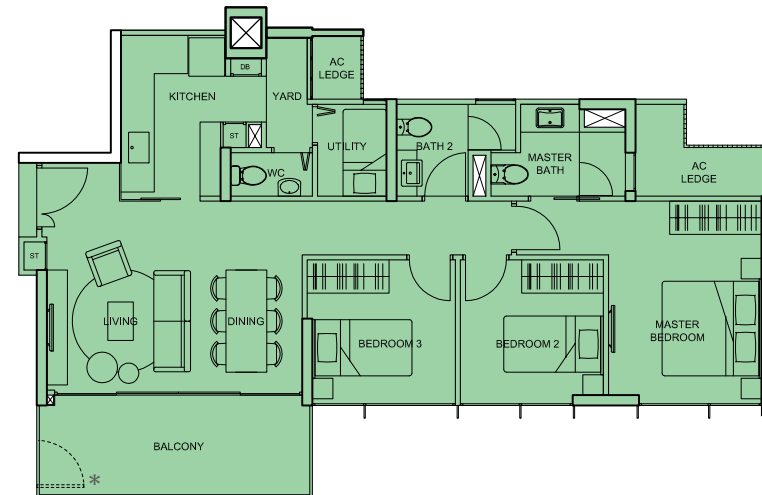
- PENTHOUSE (5BR + Family + Study)
- PENTHOUSE (4BR + Family)
- 4BR
- 3BR (Dual key)
- 3BR
- 2BR
- 1BR



Type C1
 97 sqm (1,044 sq ft)
 #06-18, #07-18



Type B5
 71 sqm (764 sq ft)
 #06-20, #07-20

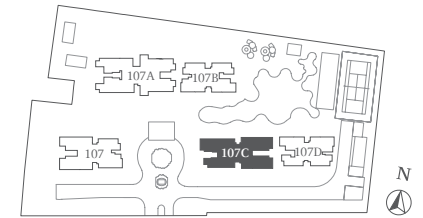


Type C1a
 97 sqm (1,044 sq ft)
 #06-19, #07-19

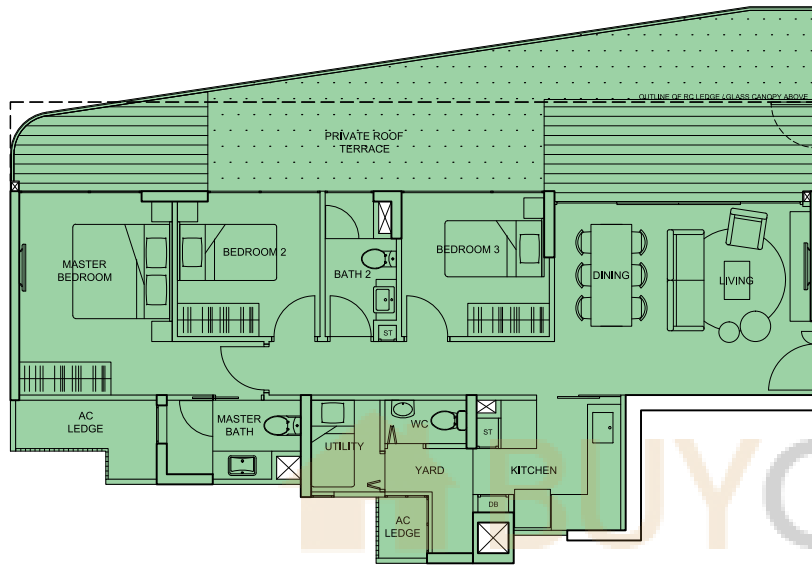
* Only for units on 6TH storey.

NOTE: The plans depicting the layouts of the units are correct at the time of printing and are subject to such amendments as may be required or approved by the relevant authorities. The plans are not drawn to scale and are for the purpose of visual presentation of the different available layouts. The relative distances depicted between the units are also not drawn to scale, and hence do not reflect the actual dimensions of, or distances between the units. The floor areas are estimates only and are subject to final survey.

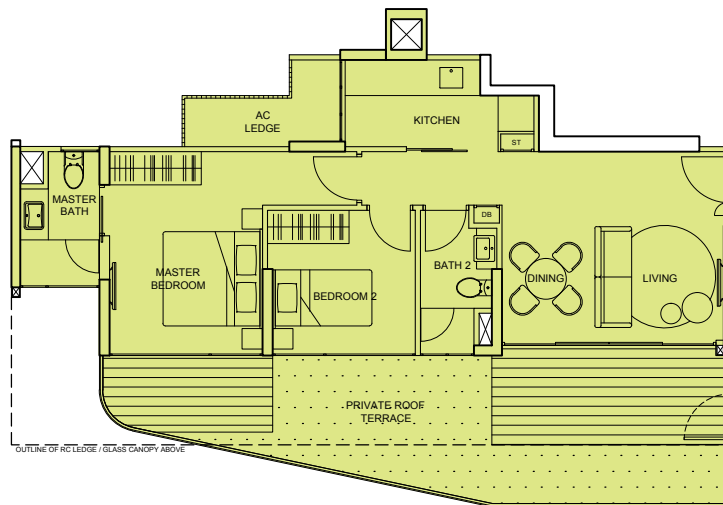
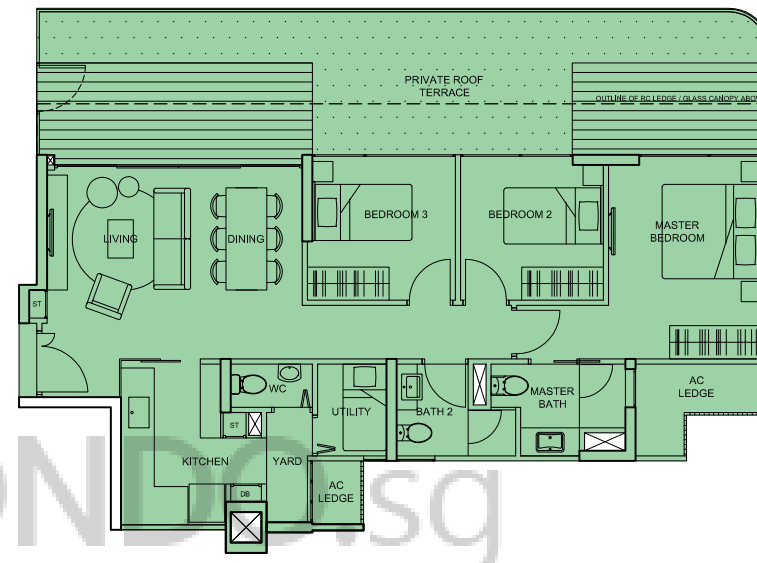
- PENTHOUSE (5BR + Family + Study)
- PENTHOUSE (4BR + Family)
- 4BR
- 3BR (Dual key)
- 3BR
- 2BR
- 1BR



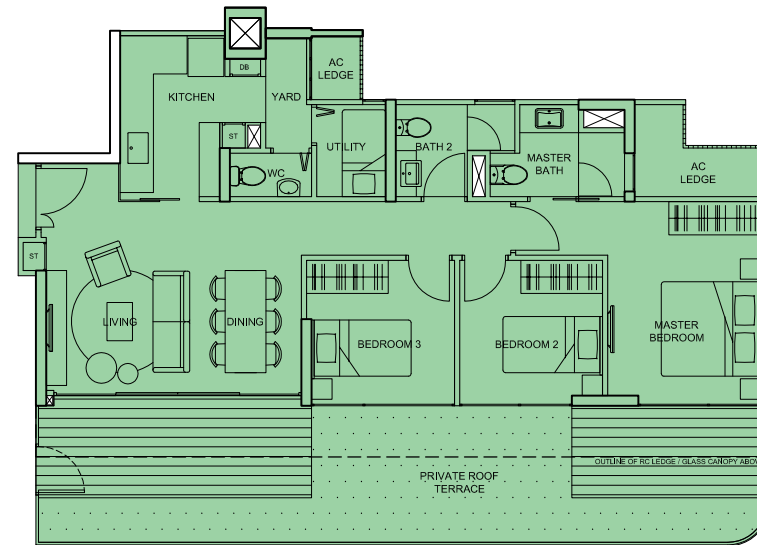
Type C2(r)
129 sqm (1,389 sq ft)
#17-17



Type C1(r2)
128 sqm (1,378 sq ft)
#17-18



Type B3(r)
95 sqm (1,023 sq ft)
#17-20

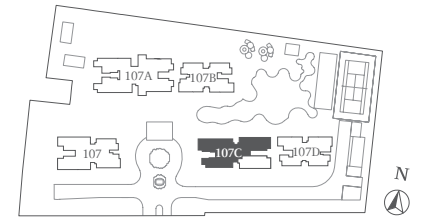


Type C1a(r2)
126 sqm (1,356 sq ft)
#17-19

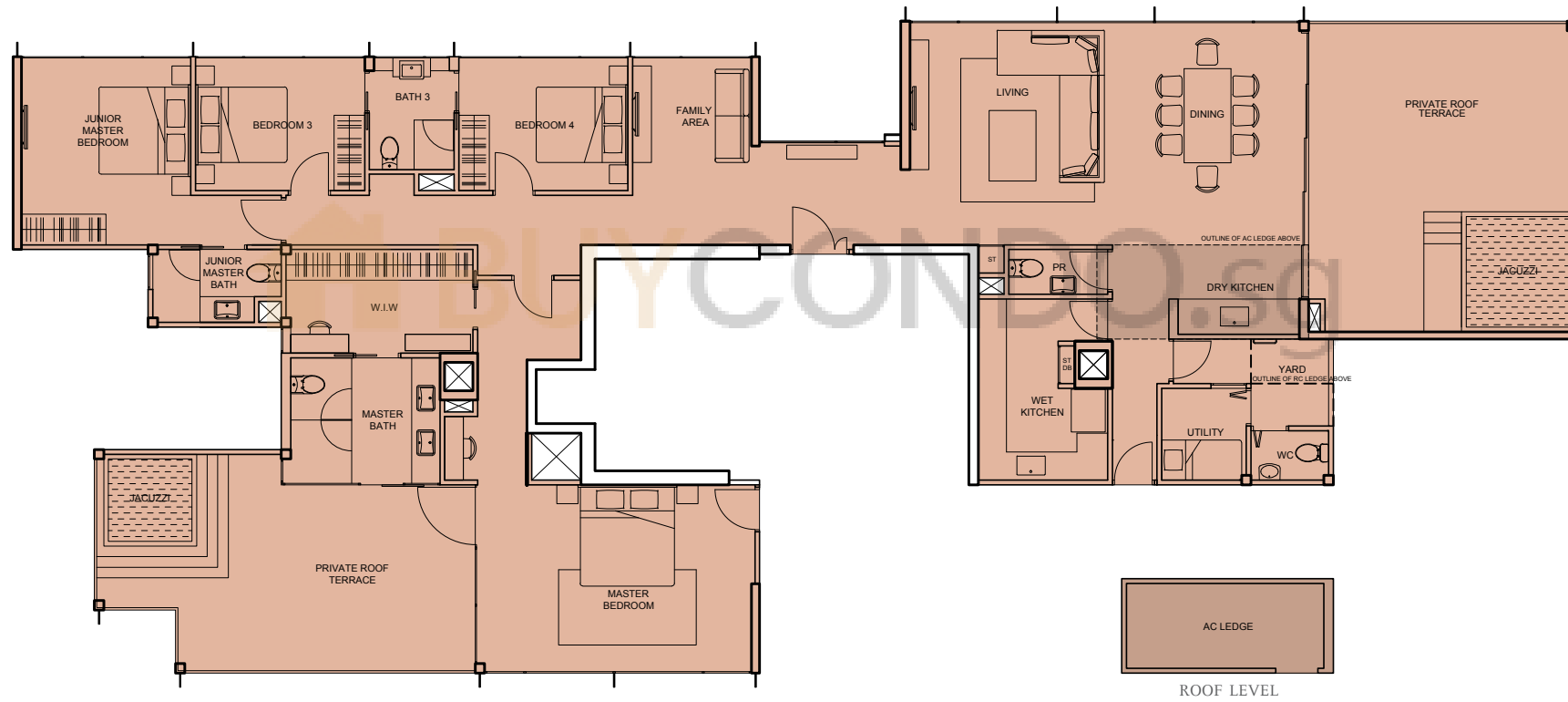
BLOCK 107C

18TH STOREY

- PENTHOUSE (5BR + Family + Study)
- PENTHOUSE (4BR + Family)
- 4BR
- 3BR (Dual key)
- 3BR
- 2BR
- 1BR



Type PH2
284 sqm (3,057 sq ft)
#18-18

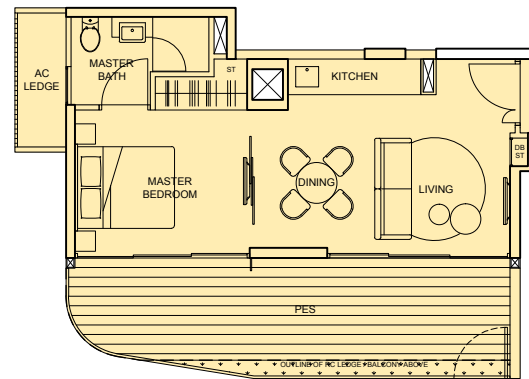
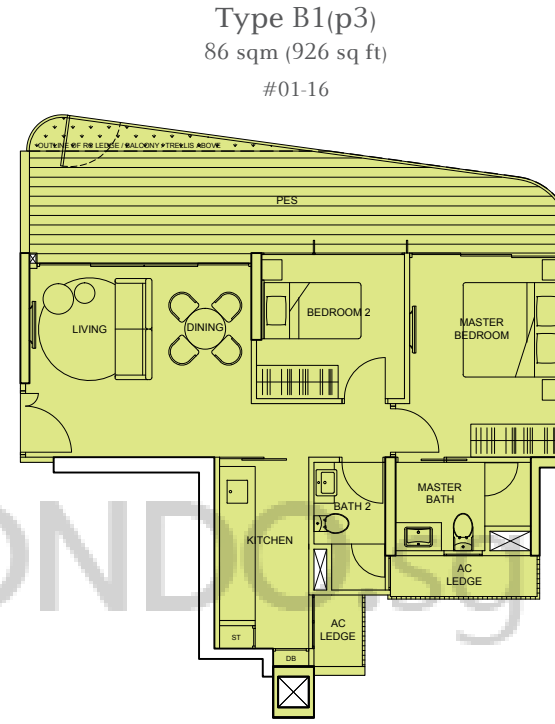
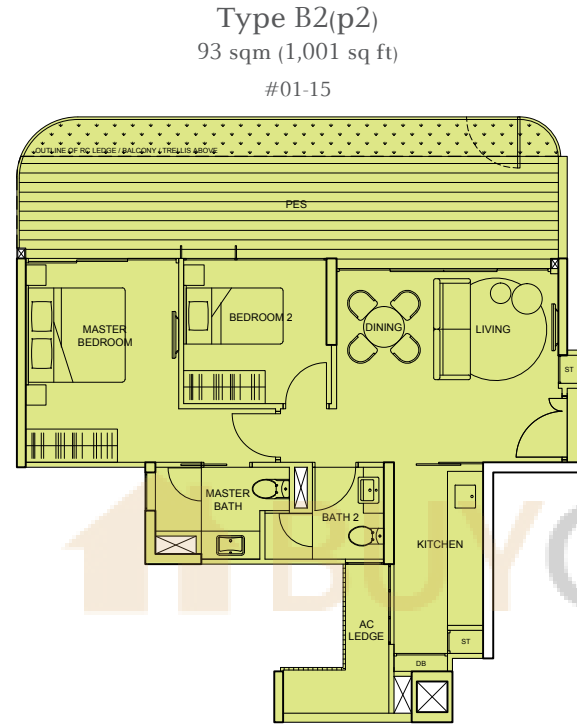
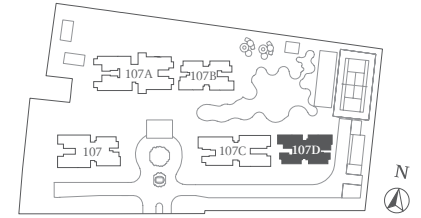


NOTE: The plans depicting the layouts of the units are correct at the time of printing and are subject to such amendments as may be required or approved by the relevant authorities. The plans are not drawn to scale and are for the purpose of visual presentation of the different available layouts. The relative distances depicted between the units are also not drawn to scale, and hence do not reflect the actual dimensions of, or distances between the units. The floor areas are estimates only and are subject to final survey.

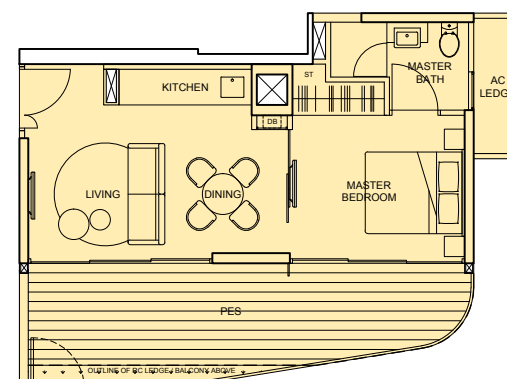
BLOCK 107D

1ST STOREY

- PENTHOUSE (5BR + Family + Study)
- PENTHOUSE (4BR + Family)
- 4BR
- 3BR (Dual key)
- 3BR
- 2BR
- 1BR



Type A2(p2)
59 sqm (635 sq ft)
#01-14



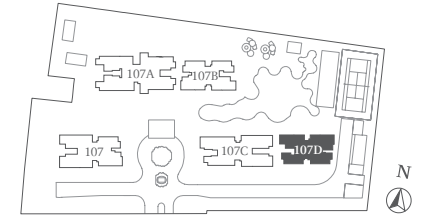
Type A1(p3)
58 sqm (624 sq ft)
#01-13

NOTE: The plans depicting the layouts of the units are correct at the time of printing and are subject to such amendments as may be required or approved by the relevant authorities. The plans are not drawn to scale and are for the purpose of visual presentation of the different available layouts. The relative distances depicted between the units are also not drawn to scale, and hence do not reflect the actual dimensions of, or distances between the units. The floor areas are estimates only and are subject to final survey.

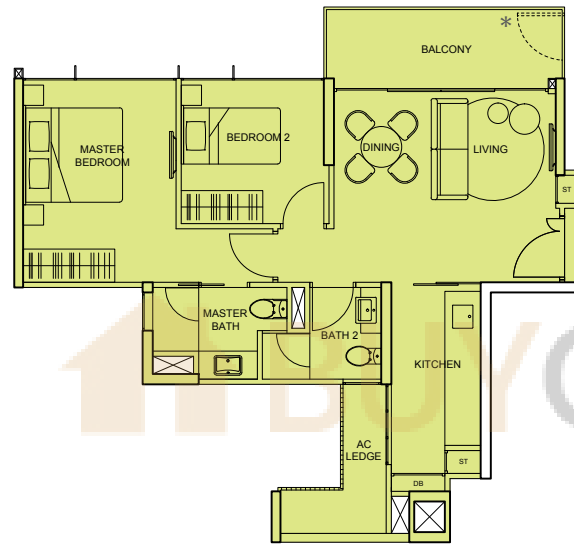
BLOCK 107D

2ND to 16TH STOREY

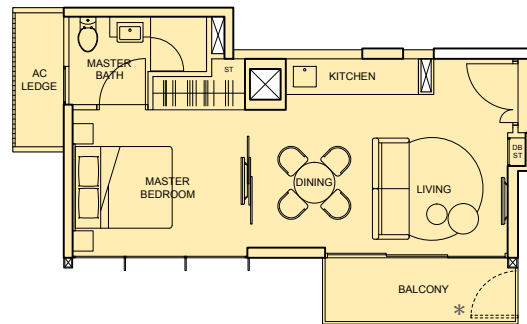
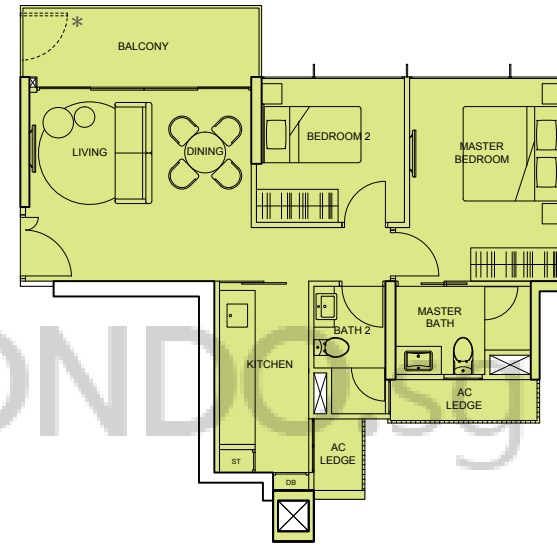
- PENTHOUSE (5BR + Family + Study)
- PENTHOUSE (4BR + Family)
- 4BR
- 3BR (Dual key)
- 3BR
- 2BR
- 1BR



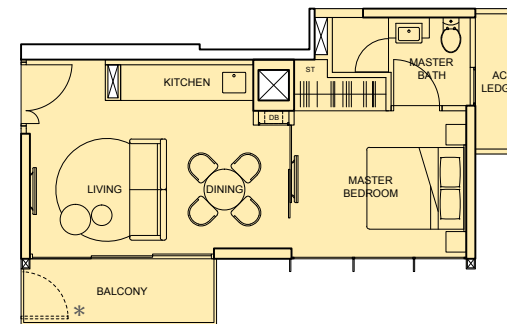
Type B2
70 sqm (753 sq ft)
#02-15 to #16-15



Type B1
70 sqm (753 sq ft)
#02-16 to #16-16



Type A2
45 sqm (484 sq ft)
#02-14 to #16-14

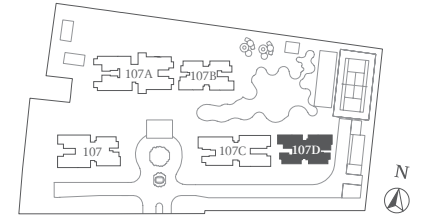


Type A1
44 sqm (474 sq ft)
#02-13 to #16-13

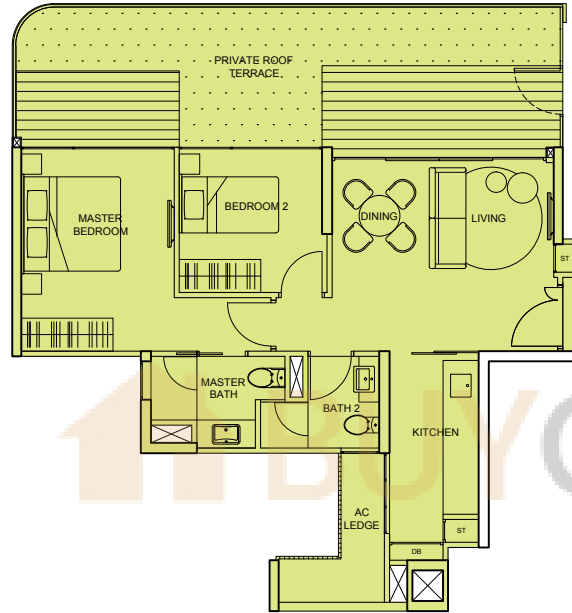
* Only for units on 6TH and 12TH storey.

NOTE: The plans depicting the layouts of the units are correct at the time of printing and are subject to such amendments as may be required or approved by the relevant authorities. The plans are not drawn to scale and are for the purpose of visual presentation of the different available layouts. The relative distances depicted between the units are also not drawn to scale, and hence do not reflect the actual dimensions of, or distances between, the units. The floor areas are estimates only and are subject to final survey.

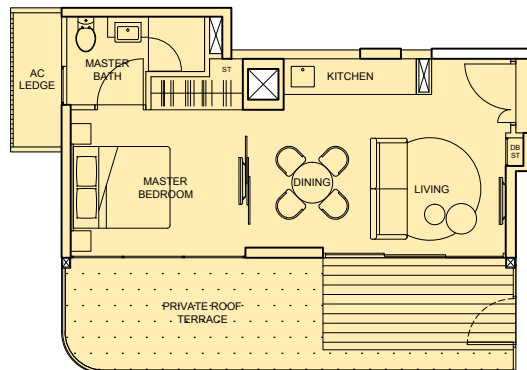
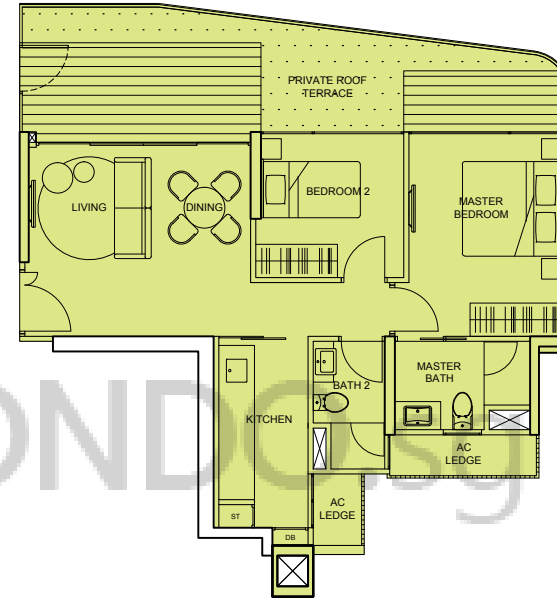
- PENTHOUSE (5BR + Family + Study)
- PENTHOUSE (4BR + Family)
- 4BR
- 3BR (Dual key)
- 3BR
- 2BR
- 1BR



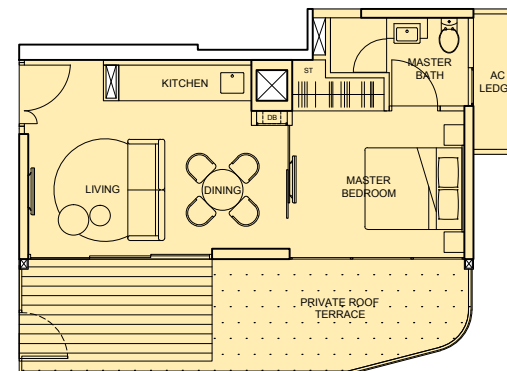
Type B2(r2)
94 sqm (1,012 sq ft)
#17-15



Type B1(r3)
87 sqm (936 sq ft)
#17-16



Type A2(r2)
60 sqm (646 sq ft)
#17-14



Type A1(r3)
58 sqm (624 sq ft)
#17-13