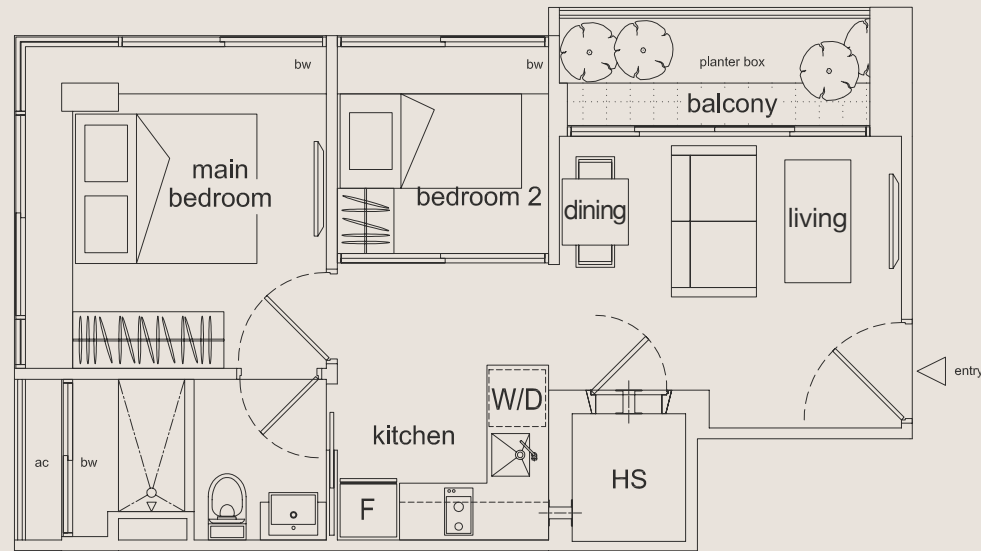


FLOOR PLAN

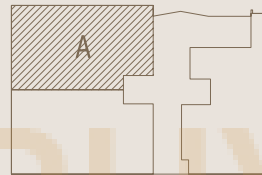
RESIDENTIAL UNITS



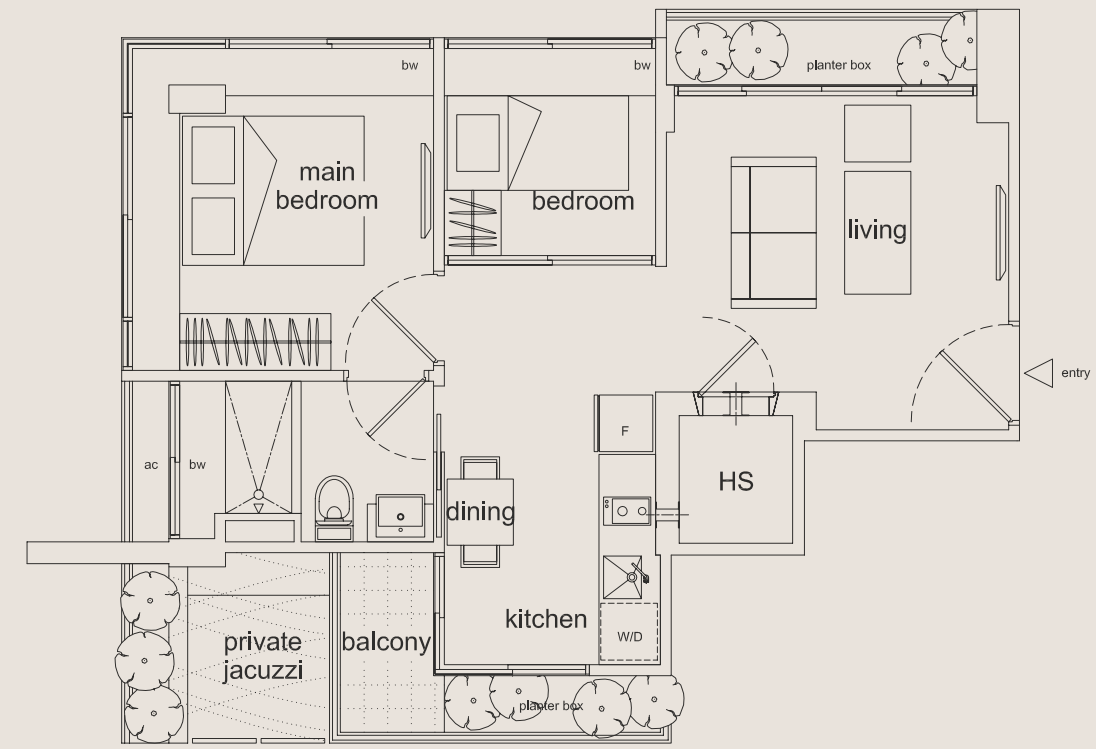
03-01 to 10-01



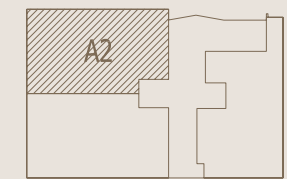
TYPE A 50.00 sq.m. / 538.00 sq.ft.
2 bedrooms
Inclusive of Bay Window, Balcony, A/C Ledge and Planter Box.



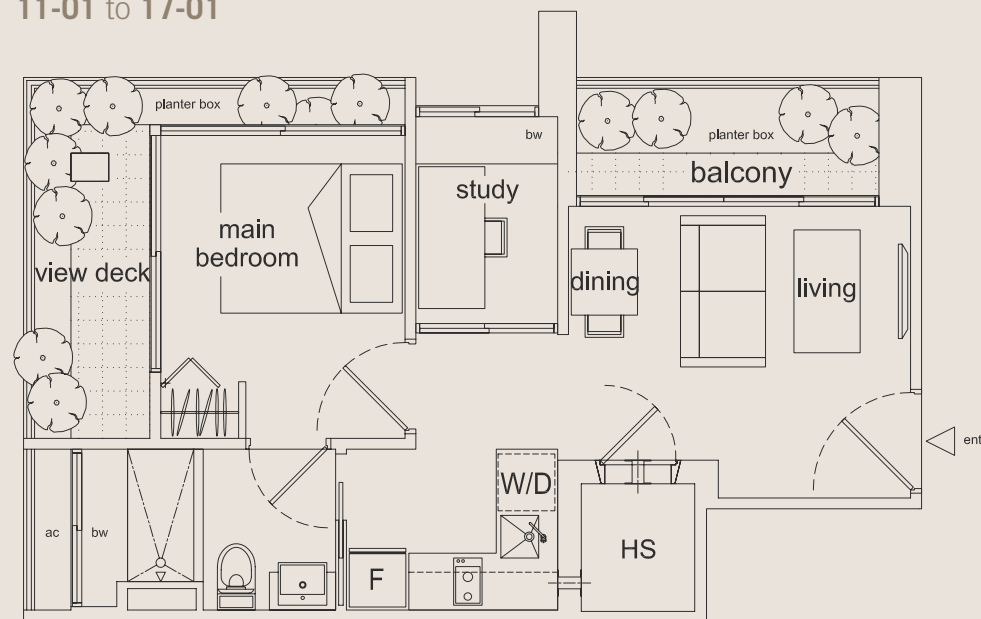
02-01



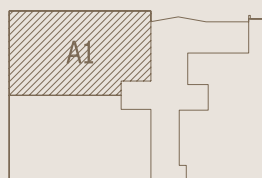
TYPE A2 61.00 sq.m. / 657.00 sq.ft.
2 bedrooms
Inclusive of Bay Window, Balcony, A/C Ledge and Planter Box.



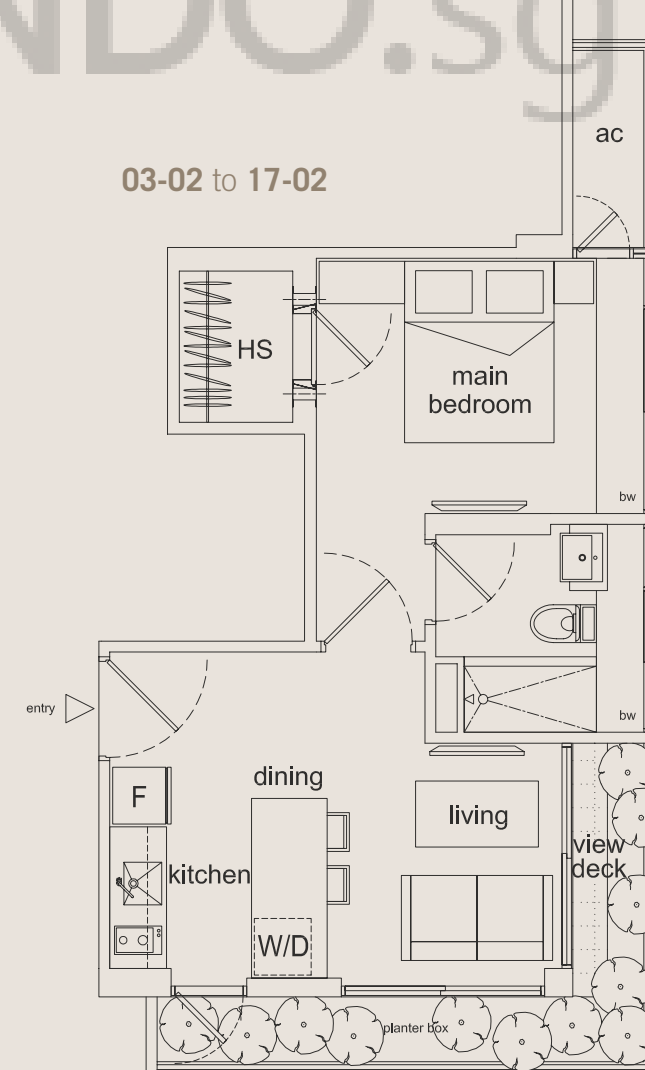
11-01 to 17-01



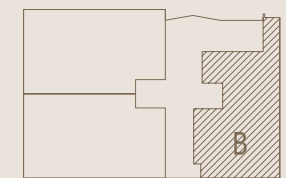
TYPE A1 51.00 sq.m. / 549.00 sq.ft.
1+1 bedrooms + view deck
Inclusive of Bay Window, Balcony, A/C Ledge and Planter Box.



03-02 to 17-02



TYPE B 46.00 sq.m. / 495.00 sq.ft.
1 bedroom
Inclusive of Bay Window, Balcony, A/C Ledge and Planter Box.



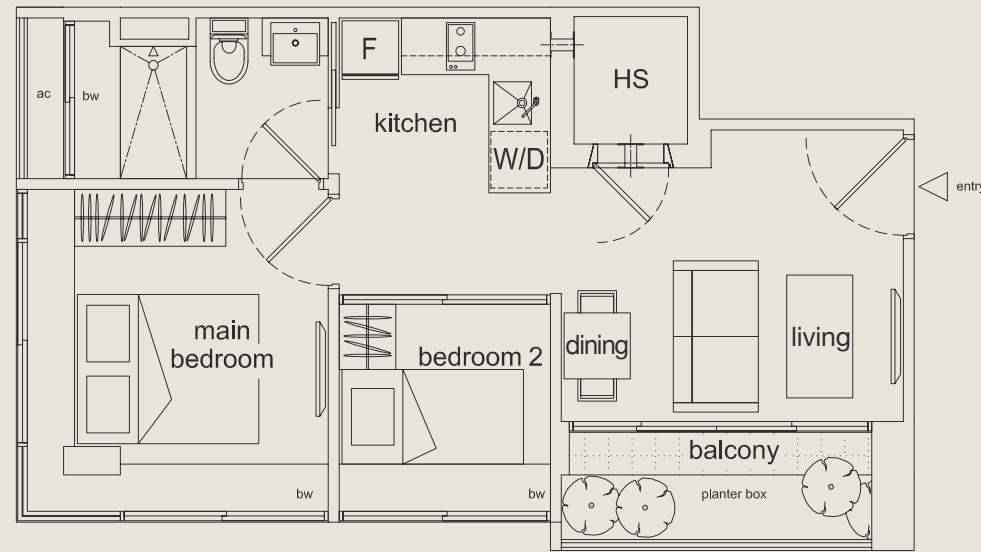
BUYCONDO.SG

FLOOR PLAN

RESIDENTIAL UNITS

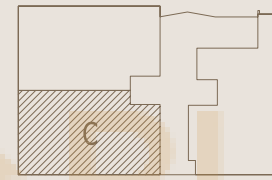


03-03 to 10-03

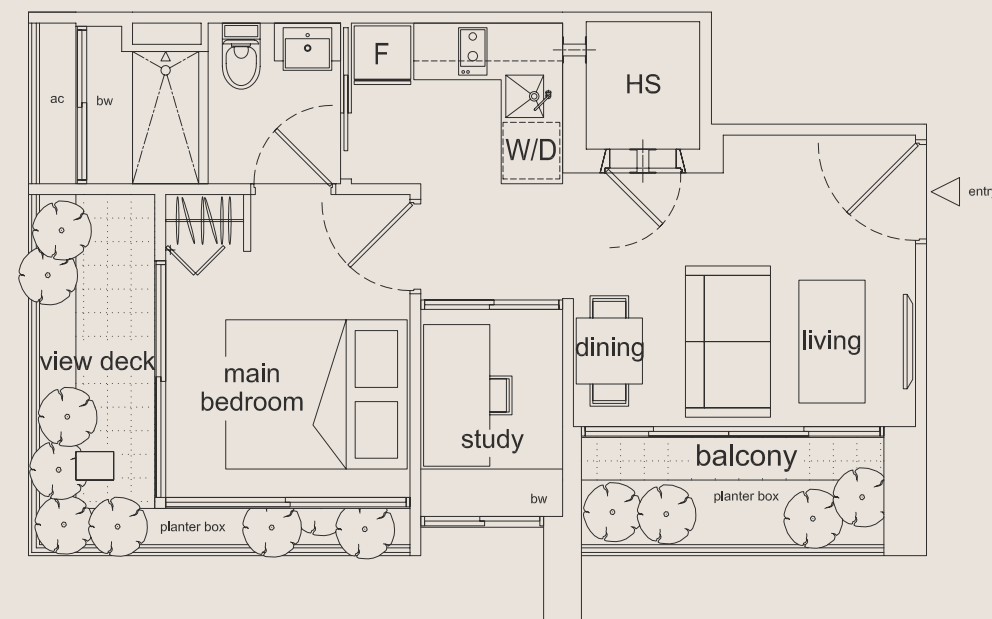


TYPE C 50.00 sq.m. / 538.00 sq.ft.
2 bedrooms

Inclusive of Bay Window, Balcony, A/C Ledge and Planter Box.

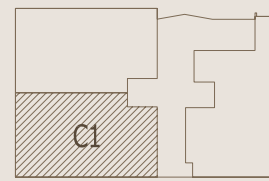


11-03 to 17-03



TYPE C1 51.00 sq.m. / 549.00 sq.ft.
1+1 bedrooms + view deck

Inclusive of Bay Window, Balcony, A/C Ledge and Planter Box.

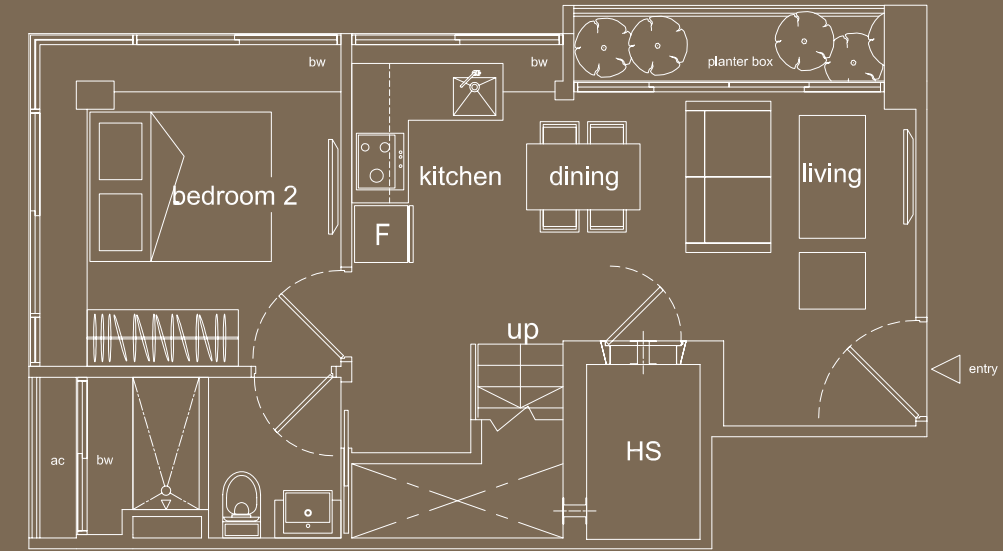


FLOOR PLAN

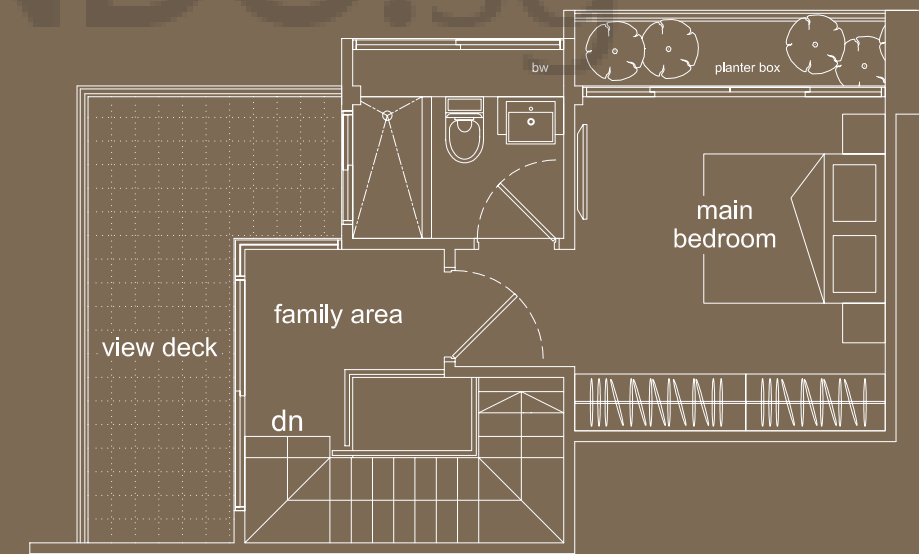
PENTHOUSE UNITS



Lower storey 18-01

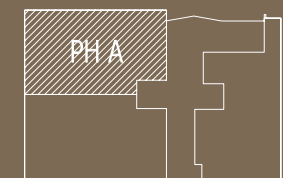


Upper storey 18-01



TYPE PHA 92.00 sq.m. / 990.00 sq.ft.
2+1 bedrooms + view deck

Inclusive of Bay Window, Balcony, A/C Ledge and Planter Box.

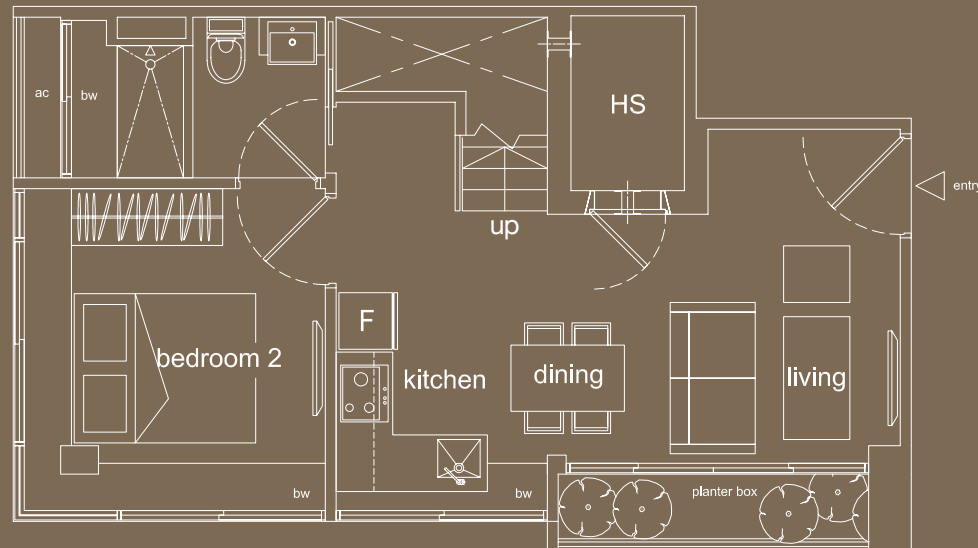


FLOOR PLAN PENTHOUSE UNITS

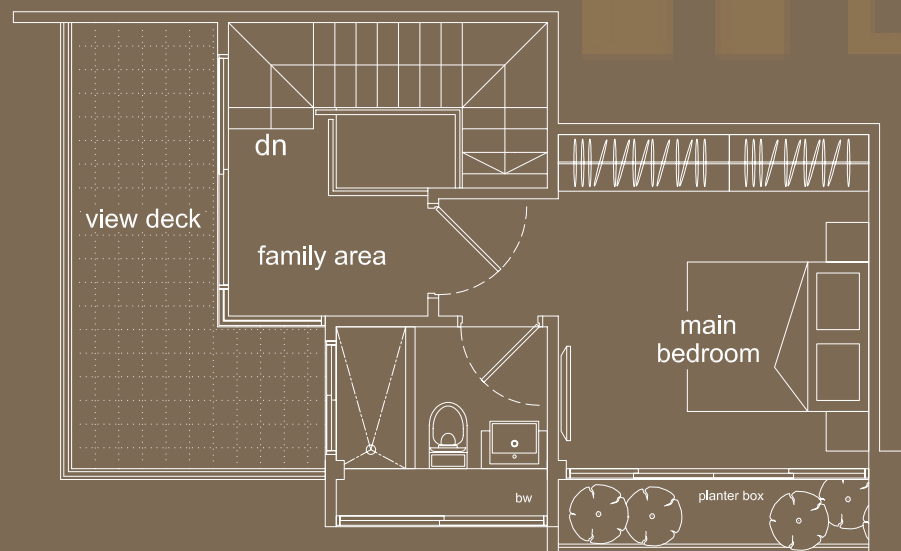


SPECIFICATION

Lower storey 18-03



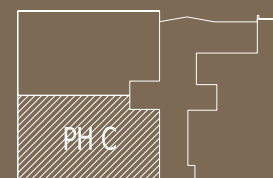
Upper storey 18-03



TYPE PHC
2+1 bedrooms + view deck

92.00 sq.m. / 990.00 sq.ft.

Inclusive of Bay Window, Balcony, A/C Ledge and Planter Box.



FOUNDATION

Piling system to Engineer's specification / BCA approval.

STRUCTURE

Reinforced concrete to Engineer's design.

WALLS

External

RC wall and/or common clay brick.

Internal

Dry partition wall and/or common clay brick.

ROOF

Flat roof

Reinforced concrete roof with waterproofing and insulation.

CEILING

Living/ Dining/ Bedrooms/ Study

Skim Coat with emulsion paint.

Household Shelter and Yard

Cement and sand plaster and/or skim coat with emulsion paint.

Toilet and Bath

Moisture resistant plaster ceiling boards with emulsion paint.

Kitchen

Moisture resistant plaster ceiling boards with emulsion paint.

FINISHES

Wall (For Apartments)

Living/Dining/ Bedrooms/ Study

Cement and Sand plaster and/or skim coat with Household Shelter and Yard emulsion paint.

Master Bath/ Common

Homogeneous and/or ceramic tiles laid up to false Toilet and Kitchen ceiling height (exposed area only).

Wall (For Common Areas)

1st Storey Lift Lobbies

Granite and/or ceramic tiles up to false ceiling height (exposed areas only).

Typical lift lobbies

Ceramic tiles up to false ceiling height (exposed areas only), and/or cement and sand plaster with emulsion paint.

Staircases

Cement and sand plaster and/or skim coat with emulsion paint.

External Wall

Cement and sand plaster and/or skim coat with weather proof paint.

Floor (For Apartments)

Living / Dining

Compressed marble and/or timber strip with compressed marble and/or timber skirting.

Bedroom / Study

Compressed marble and/or timber strip with compressed marble and/or timber skirting.

Master Bath / Common Toilet

Homogeneous and/or ceramic tiles.

Kitchen / Household Shelter / Yard

Homogeneous and/or ceramic tiles.

Planter box and A/C Ledge

Smooth cement finish.

Balcony

Pebble wash and/or ceramic tiles.

Floor (Common Areas)

a) 1st stories lift lobbies

Granite and/or ceramic tiles

b) Typical lift lobbies

Ceramic tiles

c) Staircases

Ceramic tiles for 1st storey and up to 2nd storey only

d) Pool Area

Pebble wash and/or timber deck and/or granite tiles

e) Walkway / Pavement

Homogeneous tiles

WINDOWS

Powder coated aluminum framing with min. 6mm thick clear glass.

DOORS

a) Main Entrance

Fire-rated timber laminated finished door

b) Bedrooms / Bathrooms

Semi-hollow core timber veneered door

c) Household Shelter

PSB approved blast door

d) Balcony

Powder coated aluminum framed doors with float and or tempered clear glass

e) Ironmongery

Locksets and hinges to Architect's selection

SANITARY WARES AND FITTINGS

Toilet and Bath

a) 1 shower cubicle complete with shower mixer, shower set and soap dish

b) 1 basin and mixer tap with cabinetry below

c) 1 water closet

d) 1 mirror

e) 1 towel shelf

f) 1 toilet paper holder

ELECTRICAL INSTALLATION/TELEPHONE/TV/FM

Refer to M&E schedule.