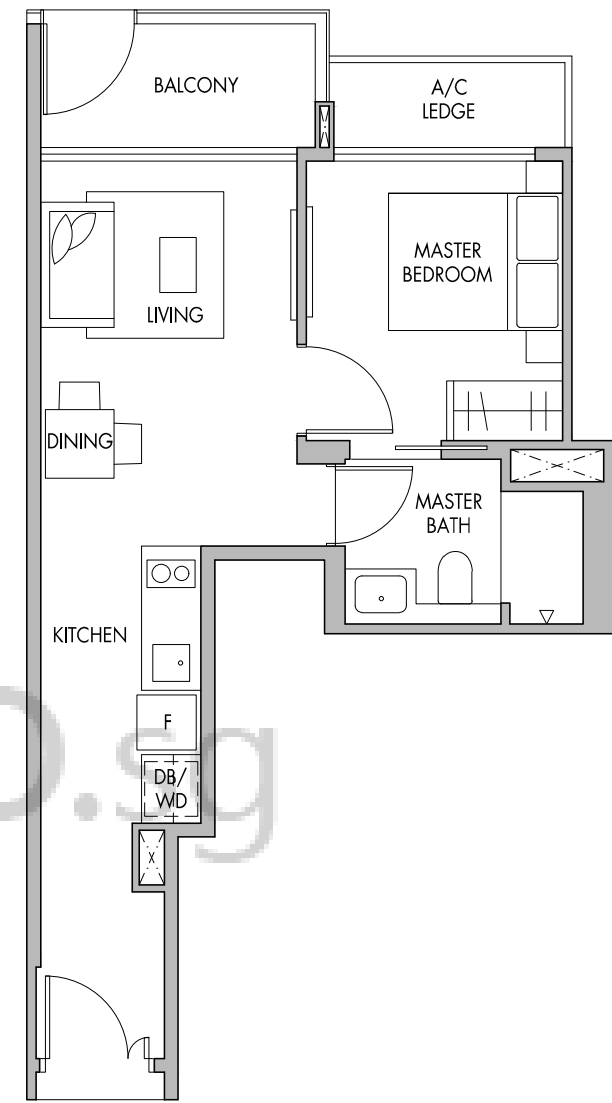
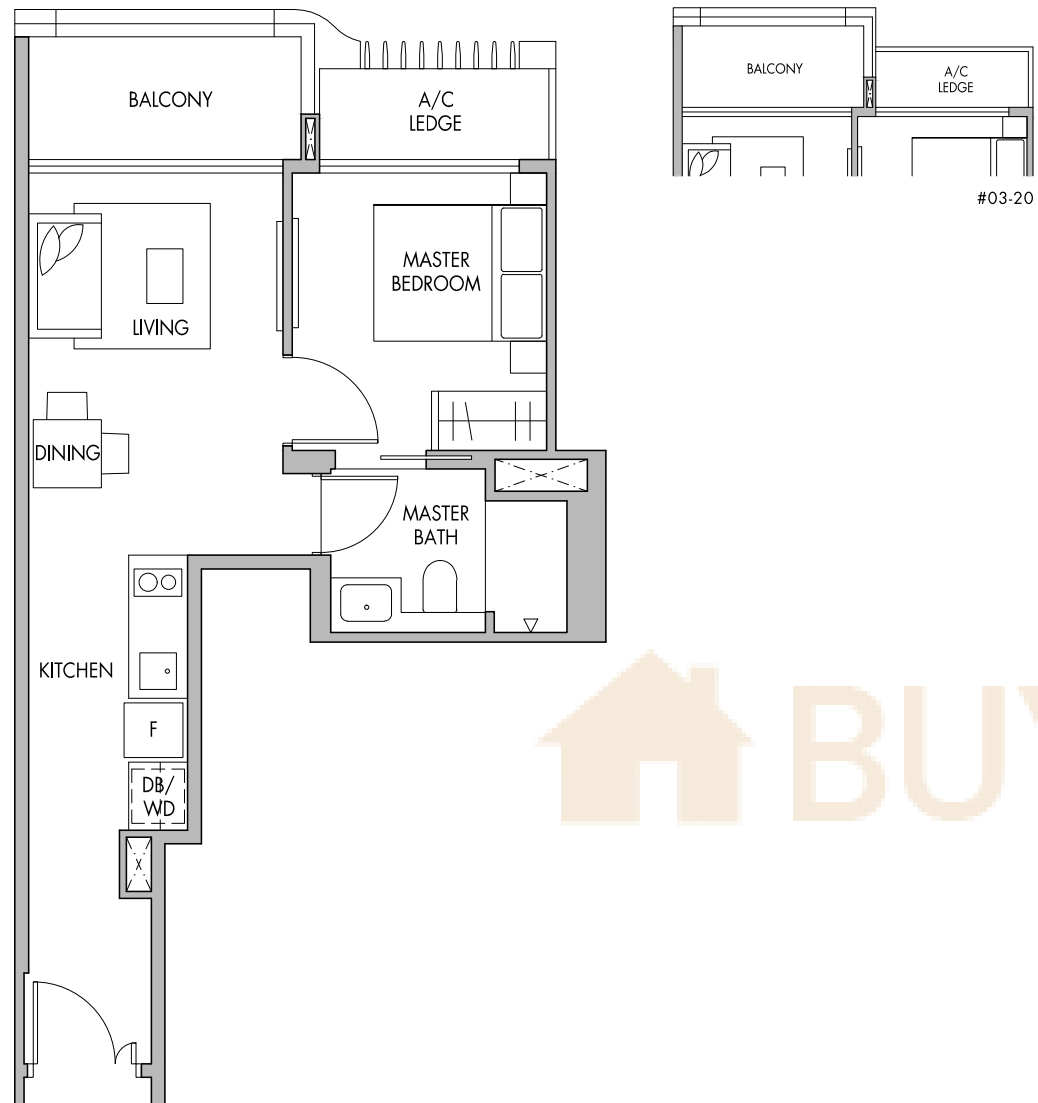


1-Bedroom

TYPE A2

1-Bedroom

TYPE A2P



BUYCONDO.SG

TOWER BLOCK

TOWER BLOCK

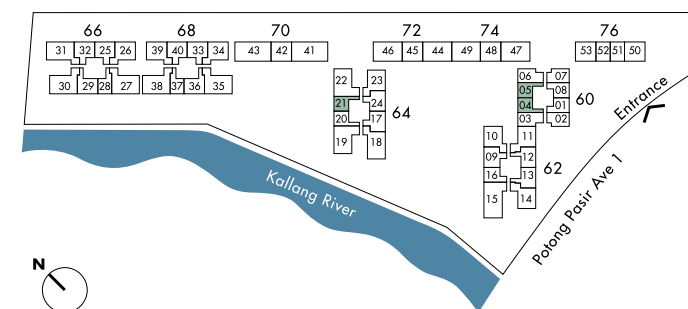
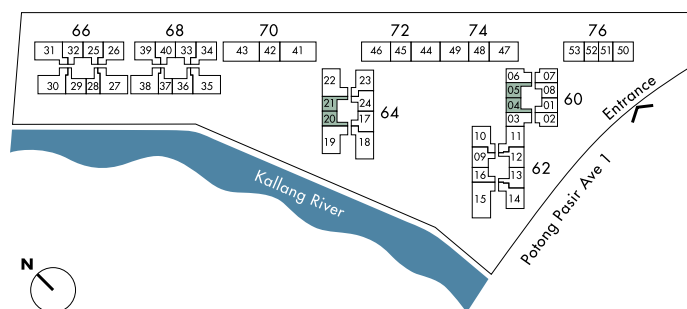
Block 60

- #04-04 to #07-04
- #10-04 to #19-04
- #04-05 to #07-05 (Mirrored)
- #10-05 to #19-05 (Mirrored)

Block 64

- #03-20
- #04-20 to #20-20
- #04-21 to #20-21 (Mirrored)

46 sq.m. | 495 sq.ft.



Block 60

- #03-04
- (Mirrored) #03-05

Block 64

- (Mirrored) #03-21

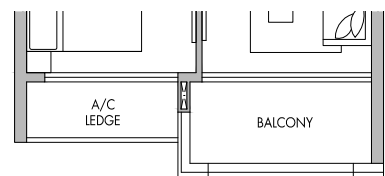
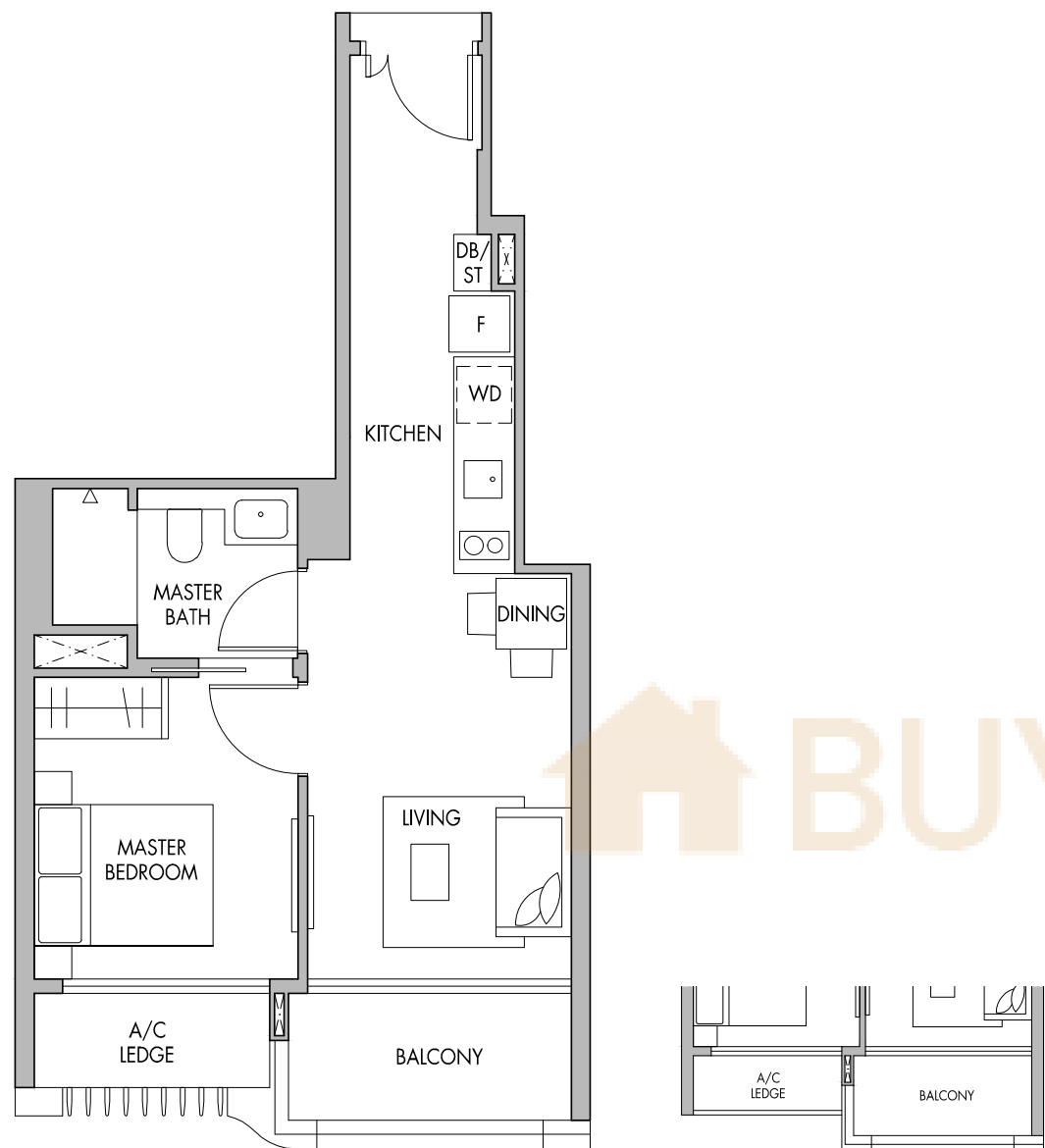
46 sq.m. | 495 sq.ft.

Area includes A/C ledge, balconies and void (if applicable). The above plans and illustrations are subject to changes as may be required by the relevant authorities. Areas are estimates only and are subject to final survey. The balcony shall not be enclosed unless with the approved screen. For an illustration of the approved balcony screen, please refer to the diagram annexed hereto as 'Annexure 1'.

Area includes A/C ledge, balconies and void (if applicable). The above plans and illustrations are subject to changes as may be required by the relevant authorities. Areas are estimates only and are subject to final survey. The balcony shall not be enclosed unless with the approved screen. For an illustration of the approved balcony screen, please refer to the diagram annexed hereto as 'Annexure 1'.

1-Bedroom

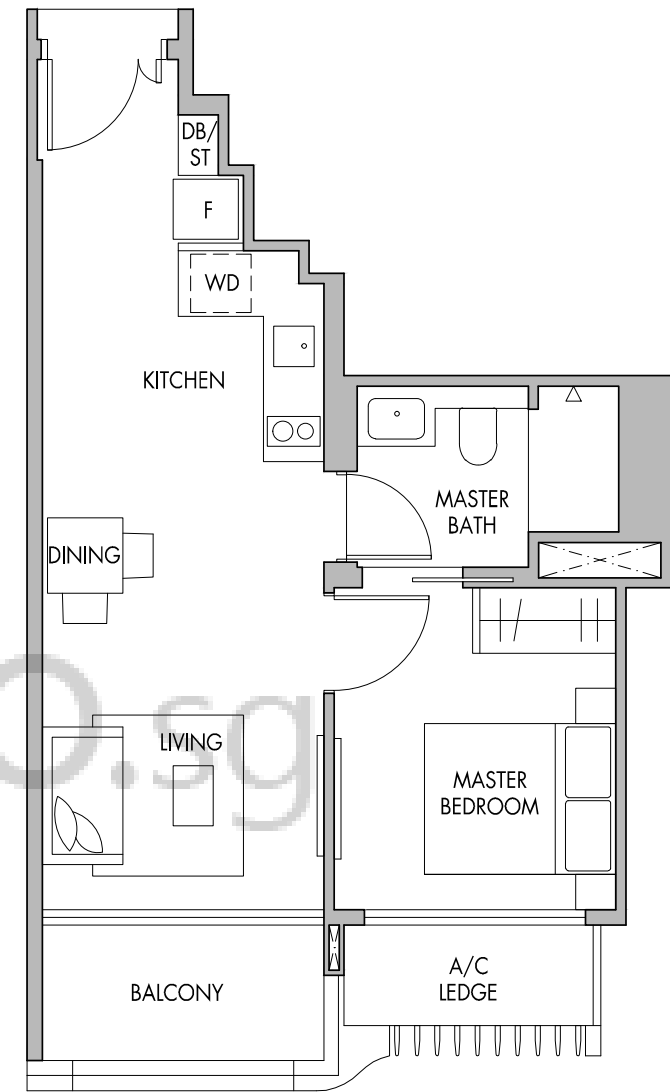
TYPE A3



#03-28
(Mirrored) #03-37

1-Bedroom

TYPE A4



BUYCONDO.SG

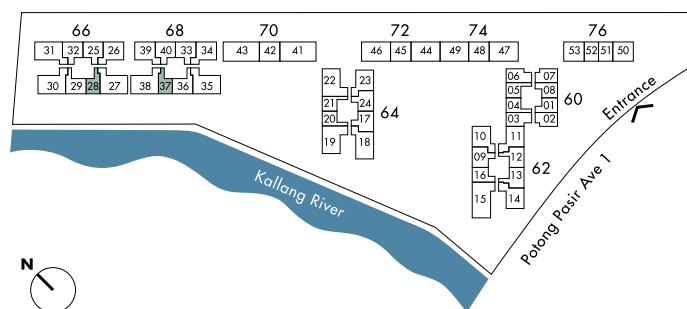
Block 66

#03-28
#04-28 to #20-28

Block 68

#03-37 (Mirrored)
#04-37 to #20-37 (Mirrored)

46 sq.m. | 495 sq.ft.



Area includes A/C ledge, balconies and void (if applicable). The above plans and illustrations are subject to changes as may be required by the relevant authorities. Areas are estimates only and are subject to final survey. The balcony shall not be enclosed unless with the approved screen. For an illustration of the approved balcony screen, please refer to the diagram annexed hereto as 'Annexure 1'.

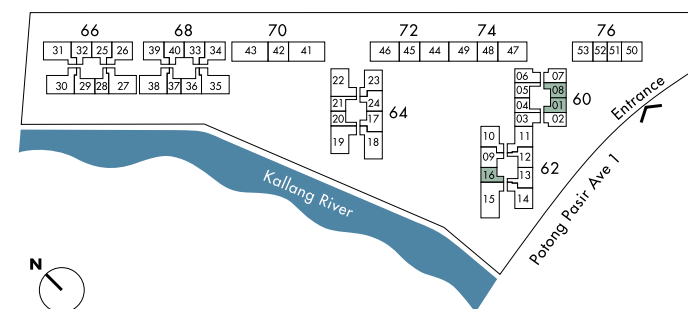
Block 60

#04-01 to #19-01
(Mirrored) #04-08 to #19-08

Block 62

(Mirrored) #04-16 to #19-16

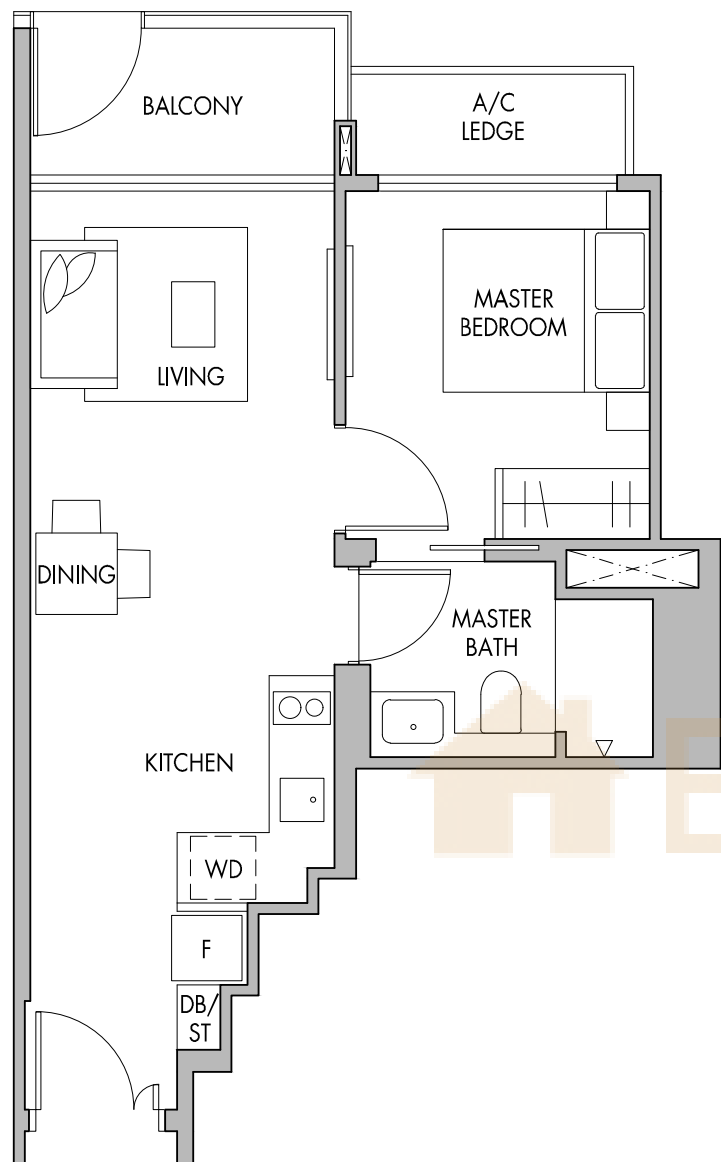
47sq.m. | 506 sq.ft.



Area includes A/C ledge, balconies and void (if applicable). The above plans and illustrations are subject to changes as may be required by the relevant authorities. Areas are estimates only and are subject to final survey. The balcony shall not be enclosed unless with the approved screen. For an illustration of the approved balcony screen, please refer to the diagram annexed hereto as 'Annexure 1'.

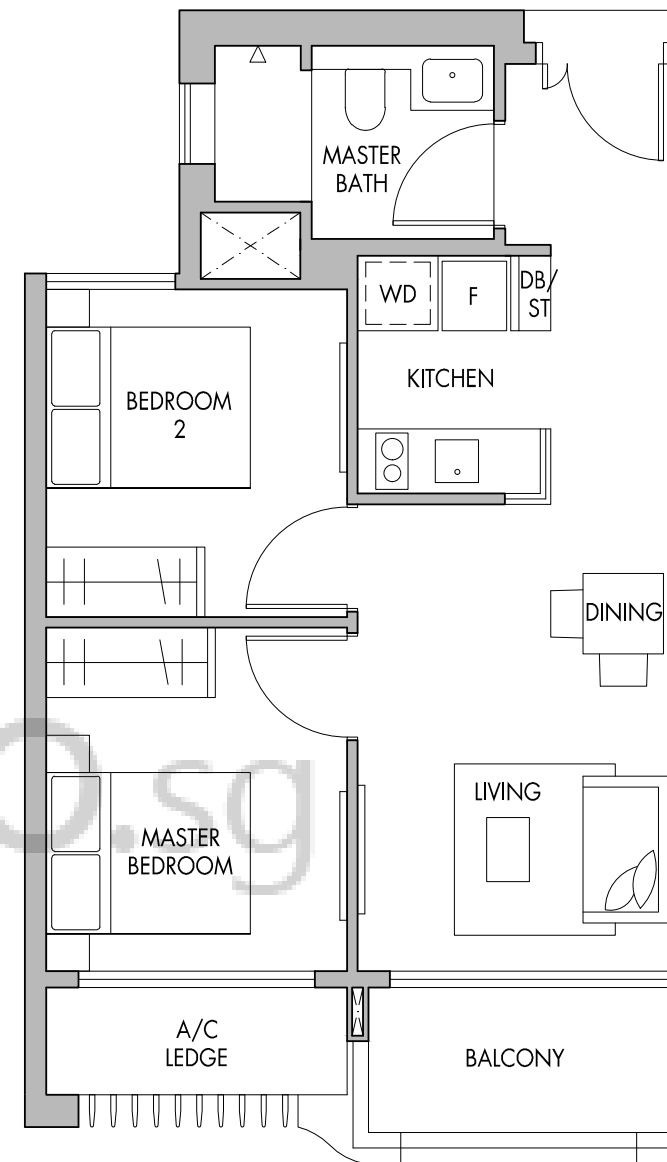
1-Bedroom

TYPE A4P



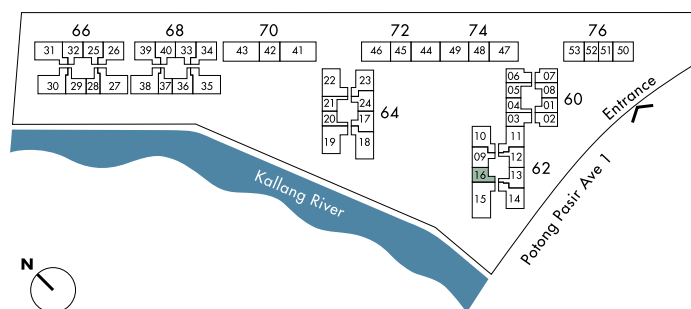
2-Bedroom

TYPE B1



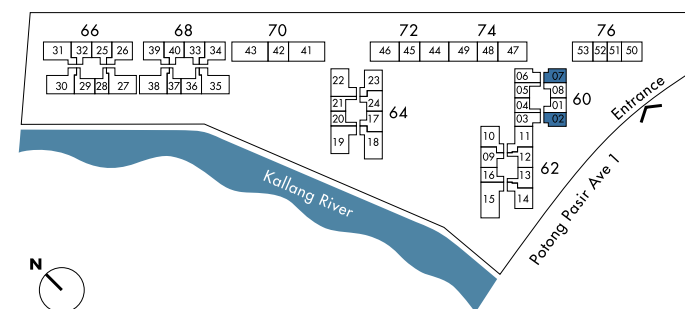
TOWER BLOCK

TOWER BLOCK



Block 62
#03-16

47sq.m. | 506 sq.ft.



Block 60
#04-02 to #19-02
(Mirrored) #04-07 to #19-07

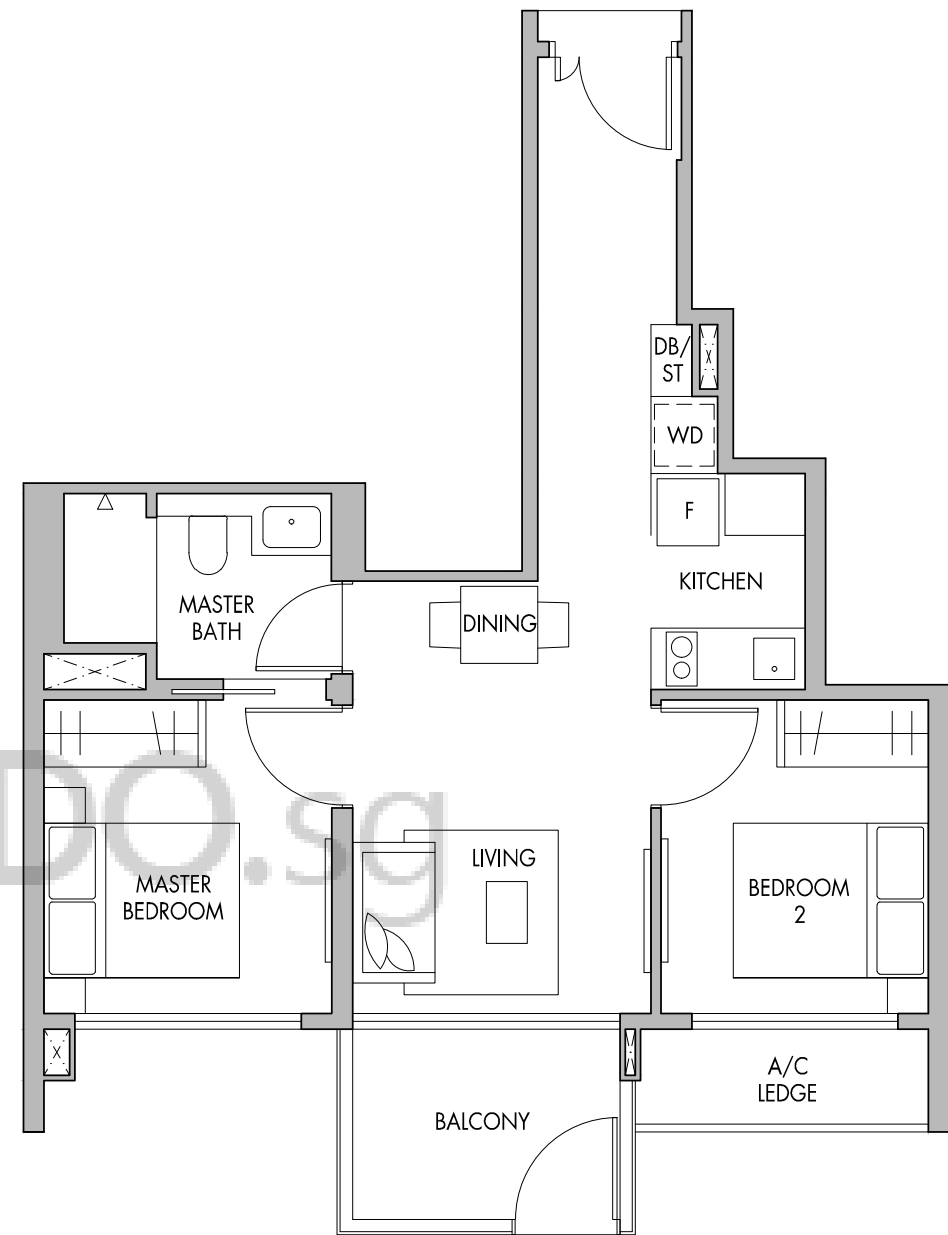
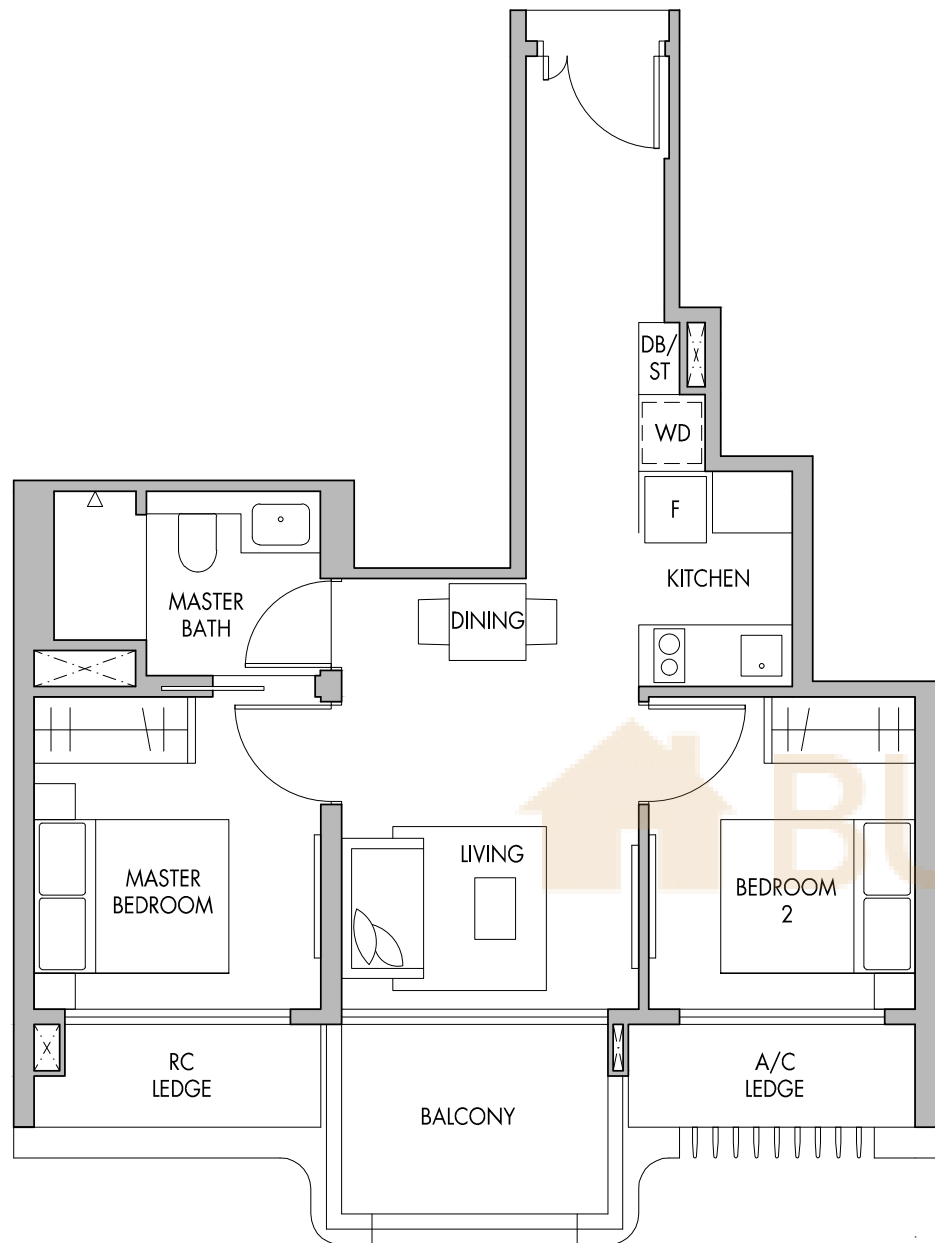
57 sq.m. | 614 sq.ft.

Area includes A/C ledge, balconies and void (if applicable). The above plans and illustrations are subject to changes as may be required by the relevant authorities. Areas are estimates only and are subject to final survey. The balcony shall not be enclosed unless with the approved screen. For an illustration of the approved balcony screen, please refer to the diagram annexed hereto as 'Annexure 1'.

Area includes A/C ledge, balconies and void (if applicable). The above plans and illustrations are subject to changes as may be required by the relevant authorities. Areas are estimates only and are subject to final survey. The balcony shall not be enclosed unless with the approved screen. For an illustration of the approved balcony screen, please refer to the diagram annexed hereto as 'Annexure 1'.

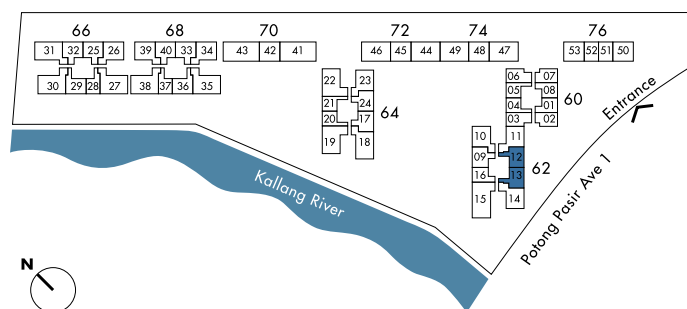
2-Bedroom
TYPE B2

2-Bedroom
TYPE B2P



Block 62
#04-12 to #07-12
#10-12 to #19-12
#04-13 to #19-13 (Mirrored)

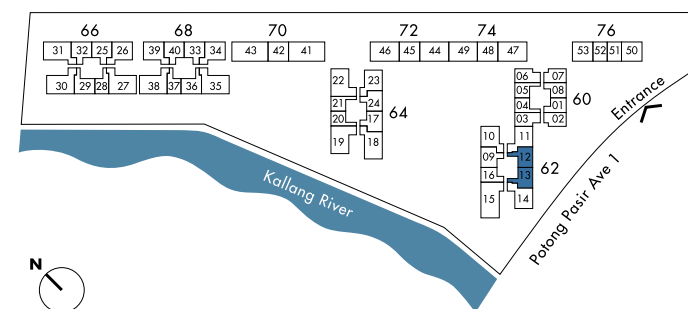
58 sq.m. | 624 sq.ft.



Area includes A/C ledge, balconies and void (if applicable). The above plans and illustrations are subject to changes as may be required by the relevant authorities. Areas are estimates only and are subject to final survey. The balcony shall not be enclosed unless with the approved screen. For an illustration of the approved balcony screen, please refer to the diagram annexed hereto as 'Annexure 1'.

Block 62
#03-12
(Mirrored) #03-13

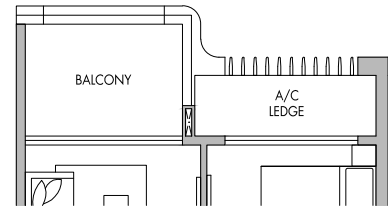
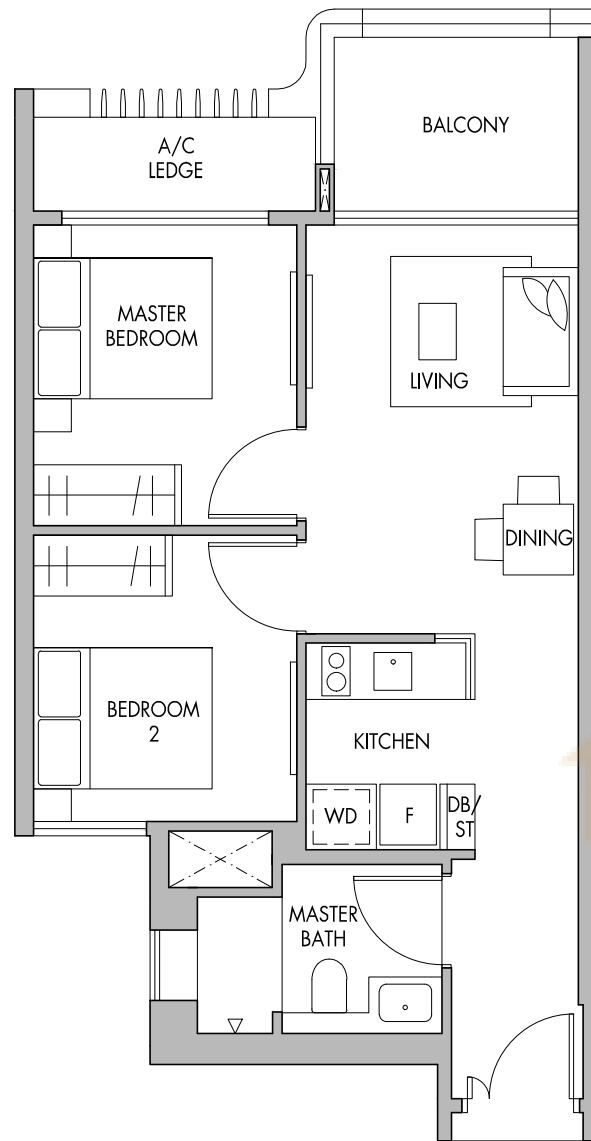
58 sq.m. | 624 sq.ft.



Area includes A/C ledge, balconies and void (if applicable). The above plans and illustrations are subject to changes as may be required by the relevant authorities. Areas are estimates only and are subject to final survey. The balcony shall not be enclosed unless with the approved screen. For an illustration of the approved balcony screen, please refer to the diagram annexed hereto as 'Annexure 1'.

2-Bedroom

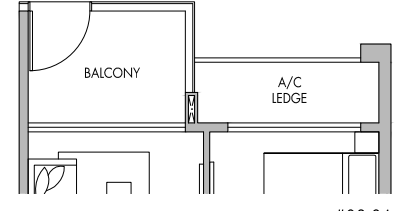
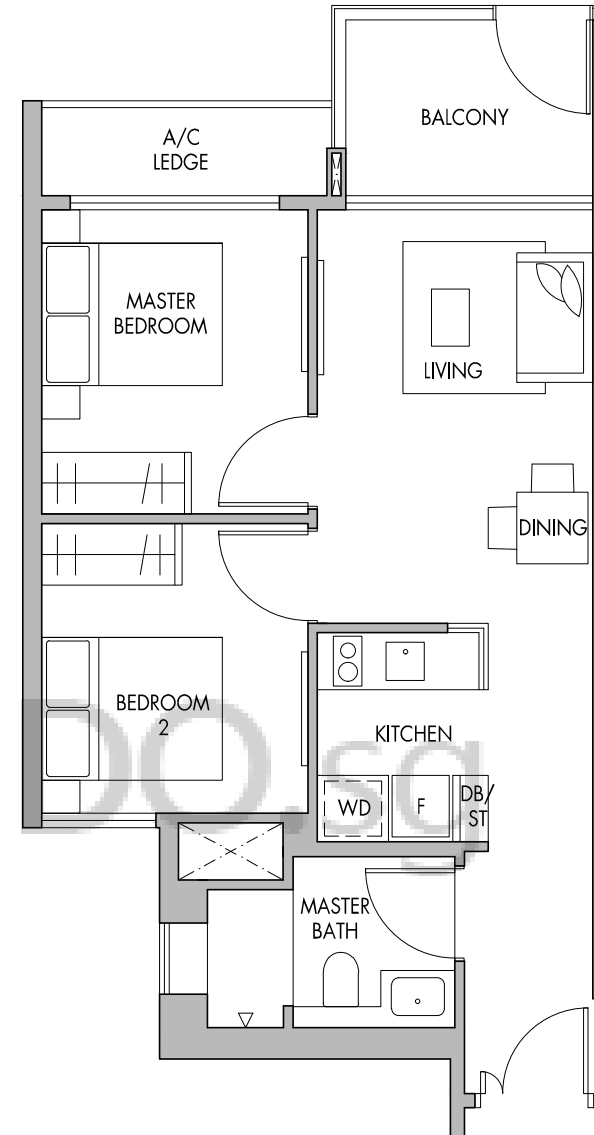
TYPE B3



#04-06 to #07-06
#10-06 to #19-06

2-Bedroom

TYPE B3P

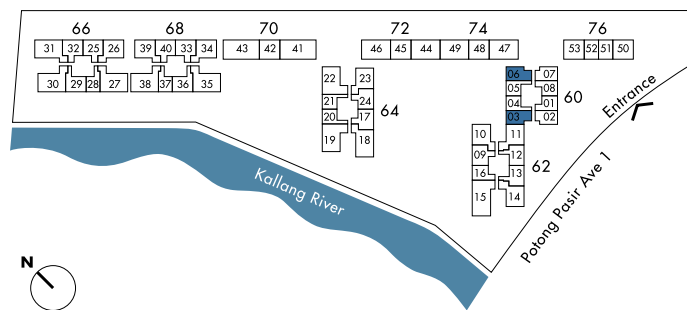


#03-06

Block 60

#04-03 to #07-03
#10-03 to #19-03
#04-06 to #07-06
#10-06 to #19-06

60 sq.m. | 646 sq.ft.

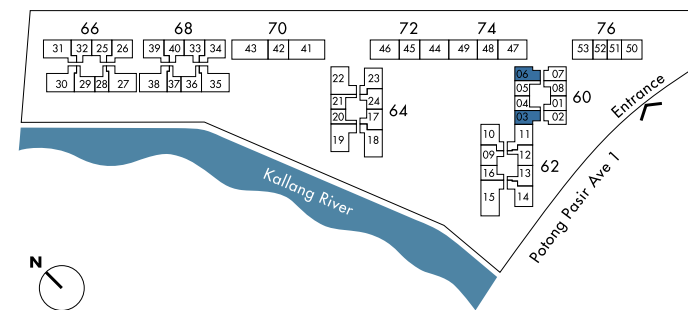


Area includes A/C ledge, balconies and void (if applicable). The above plans and illustrations are subject to changes as may be required by the relevant authorities. Areas are estimates only and are subject to final survey. The balcony shall not be enclosed unless with the approved screen. For an illustration of the approved balcony screen, please refer to the diagram annexed hereto as 'Annexure 1'.

Block 60

#03-03
#03-06

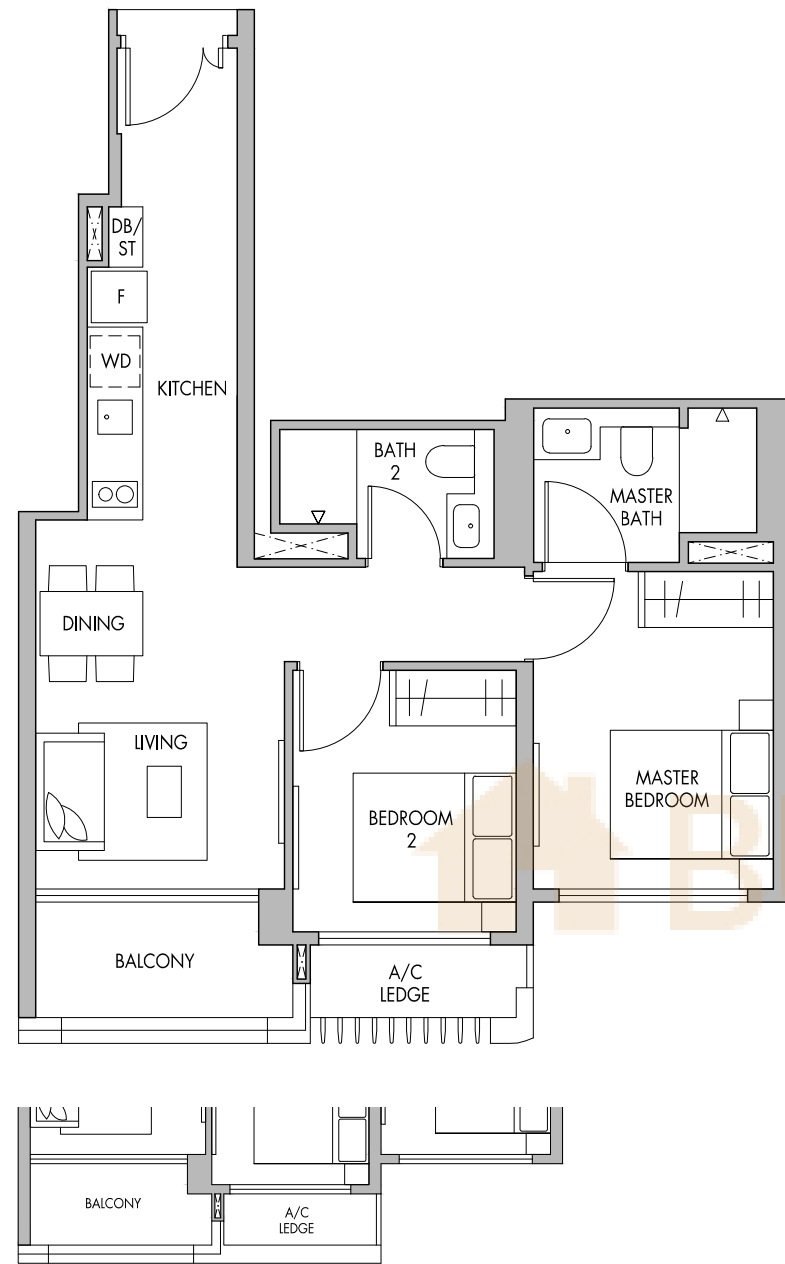
60 sq.m. | 646 sq.ft.



Area includes A/C ledge, balconies and void (if applicable). The above plans and illustrations are subject to changes as may be required by the relevant authorities. Areas are estimates only and are subject to final survey. The balcony shall not be enclosed unless with the approved screen. For an illustration of the approved balcony screen, please refer to the diagram annexed hereto as 'Annexure 1'.

2-Bedroom Premium

TYPE B5



#03-29
(Mirrored) #03-36

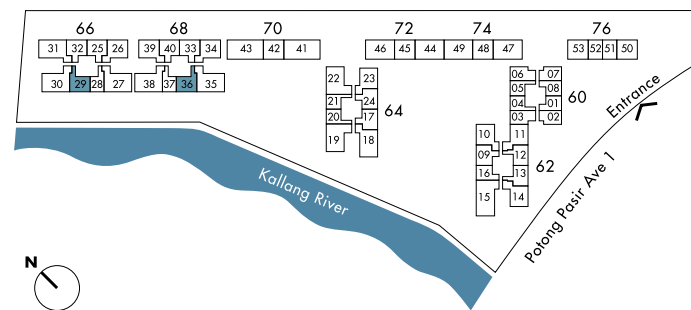
Block 66

#03-29
#04-29 to #20-29

Block 68

#03-36 (Mirrored)
#04-36 to #20-36 (Mirrored)

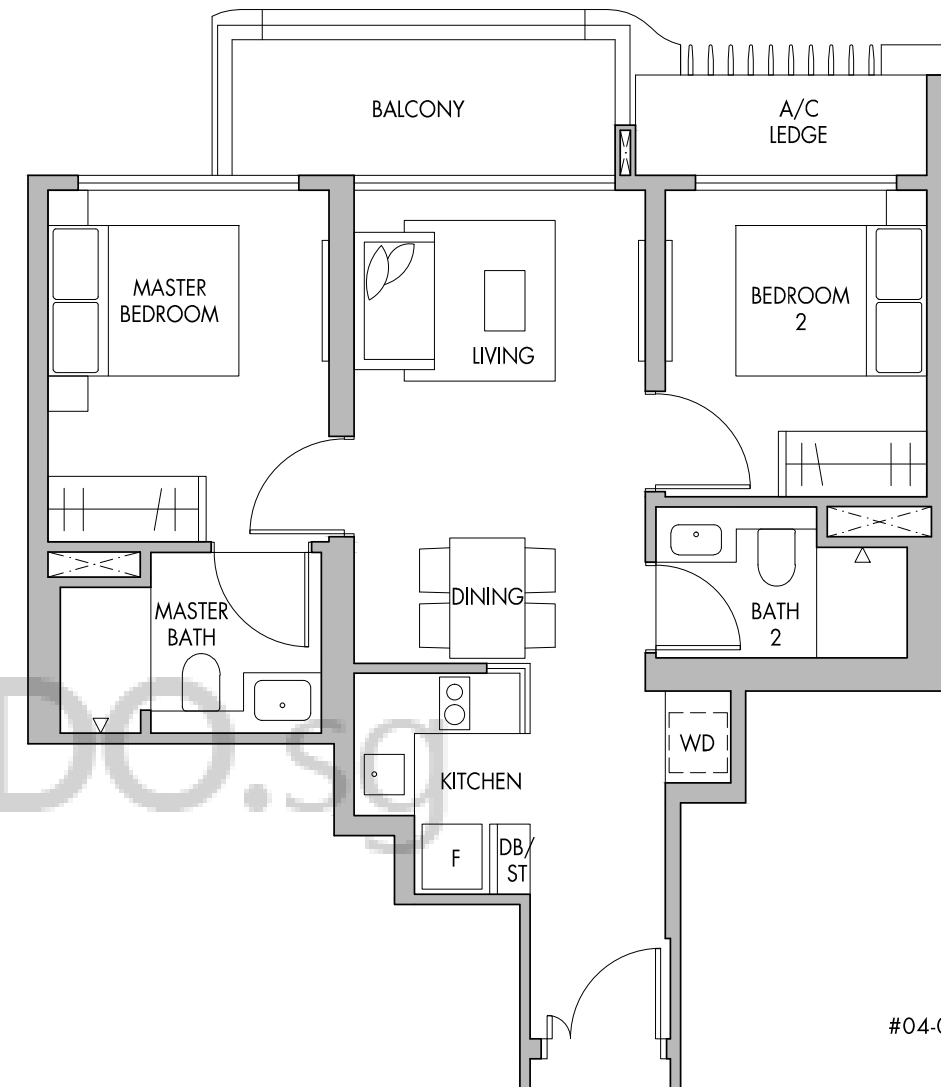
64 sq.m. | 689 sq.ft.



Area includes A/C ledge, balconies and void (if applicable). The above plans and illustrations are subject to changes as may be required by the relevant authorities. Areas are estimates only and are subject to final survey. The balcony shall not be enclosed unless with the approved screen. For an illustration of the approved balcony screen, please refer to the diagram annexed hereto as 'Annexure 1'.

2-Bedroom Premium

TYPE B6



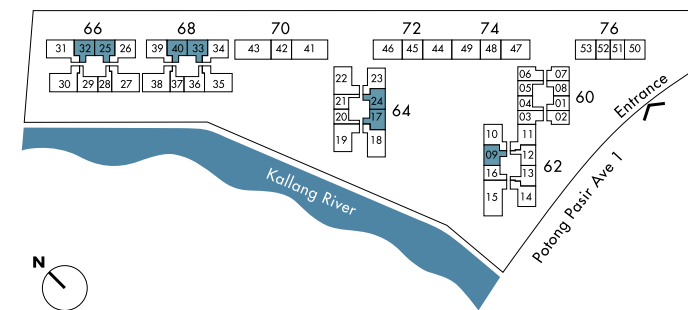
Block 62
#04-09 to #19-09

Block 64
#04-17 to #20-17
(Mirrored) #04-24 to #07-24
(Mirrored) #10-24 to #20-24

Block 66
#04-25 to #07-25
#10-25 to #20-25
(Mirrored) #04-32 to #07-32
(Mirrored) #10-32 to #20-32

Block 68
#04-33 to #07-33
#10-33 to #20-33
(Mirrored) #04-40 to #07-40
(Mirrored) #10-40 to #20-40

65 sq.m. | 700 sq.ft.



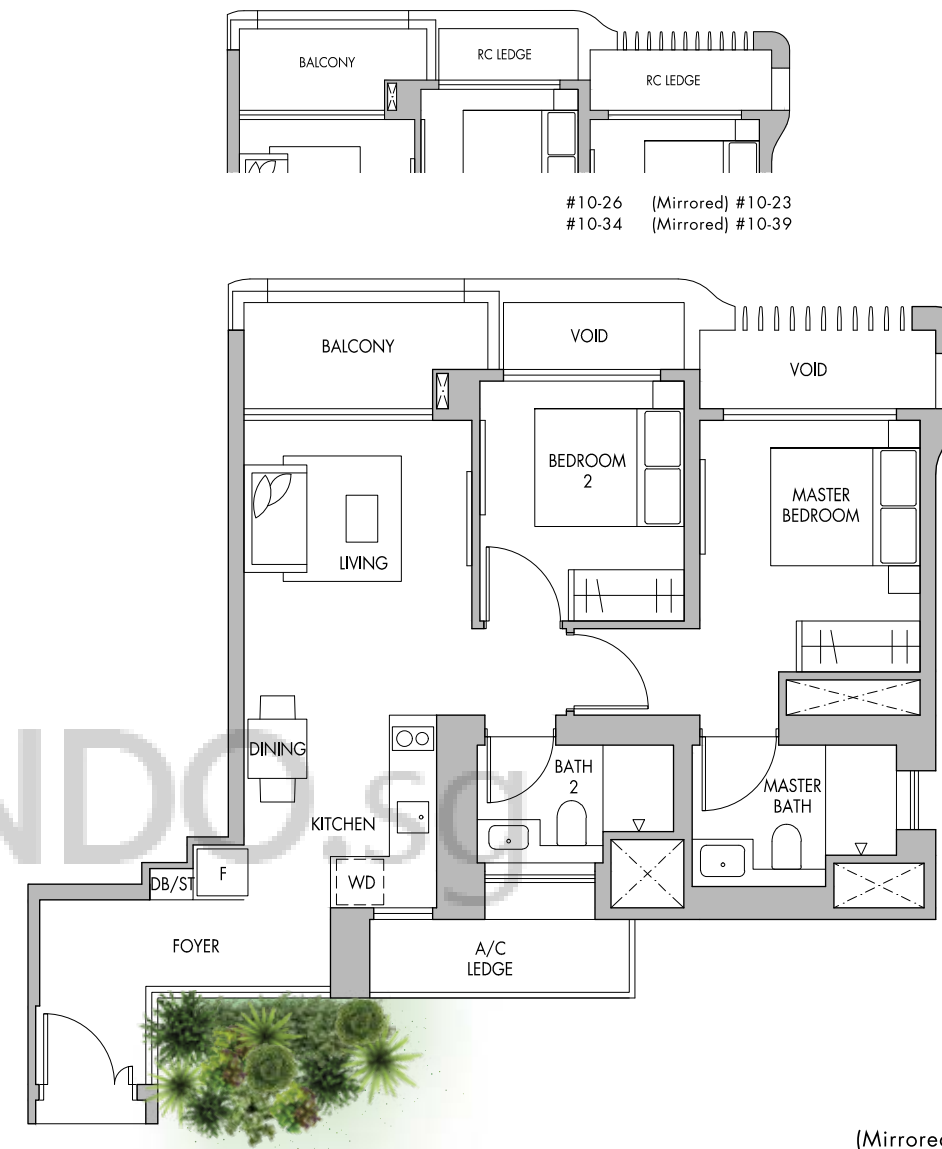
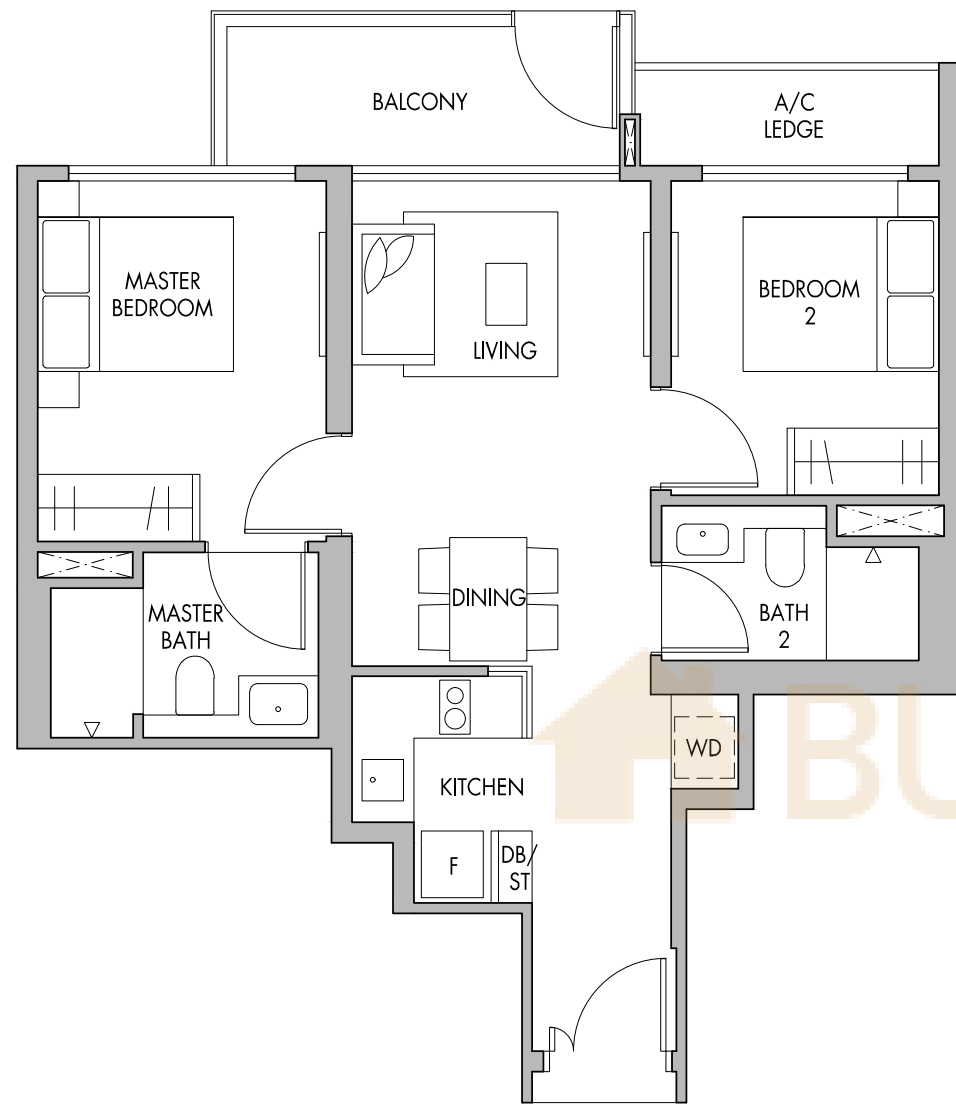
Area includes A/C ledge, balconies and void (if applicable). The above plans and illustrations are subject to changes as may be required by the relevant authorities. Areas are estimates only and are subject to final survey. The balcony shall not be enclosed unless with the approved screen. For an illustration of the approved balcony screen, please refer to the diagram annexed hereto as 'Annexure 1'.

2-Bedroom Premium

TYPE B6P

2-Bedroom Premium

TYPE B7



#10-26 (Mirrored) #10-23
#10-34 (Mirrored) #10-39

Block 62

#03-09

Block 64

#03-17
#03-24 (Mirrored)

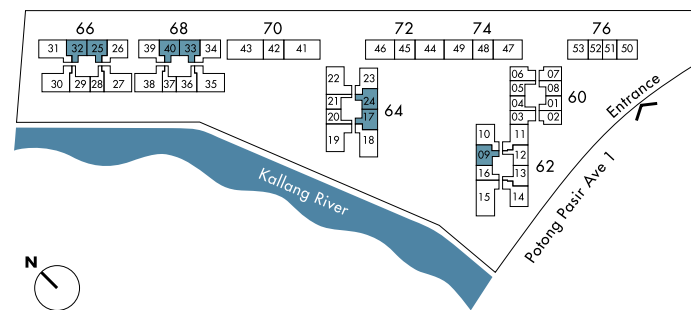
Block 66

#03-25
#03-32 (Mirrored)

Block 68

#03-33
#03-40 (Mirrored)

65 sq.m. | 700 sq.ft.



Area includes A/C ledge, balconies and void (if applicable). The above plans and illustrations are subject to changes as may be required by the relevant authorities. Areas are estimates only and are subject to final survey. The balcony shall not be enclosed unless with the approved screen. For an illustration of the approved balcony screen, please refer to the diagram annexed hereto as 'Annexure 1'.

TOWER BLOCK

Block 62

#04-10 to #19-10

Block 64

(Mirrored) #04-23 to #07-23
(Mirrored) #10-23
(Mirrored) #11-23 to #20-23

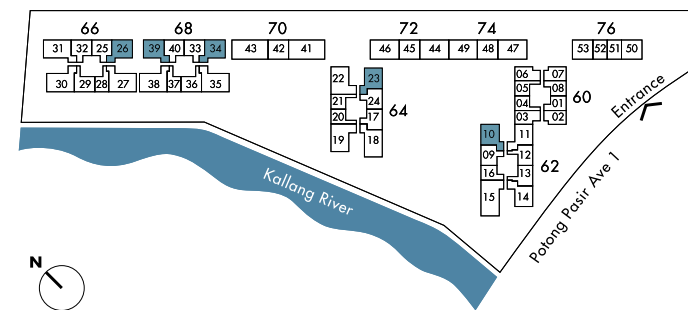
Block 66

#04-26 to #07-26
#10-26
#11-26 to #20-26

Block 68

#04-34 to #07-34
#10-34
#11-34 to #20-34
(Mirrored) #04-39 to #07-39
(Mirrored) #10-39
(Mirrored) #11-39 to #20-39

69 sq.m. | 743 sq.ft.



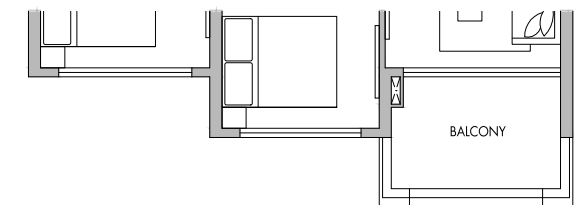
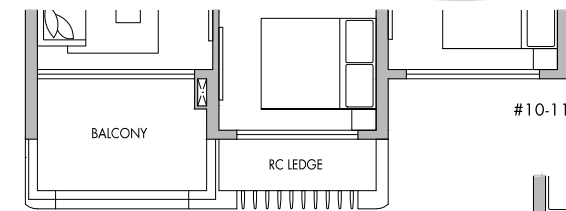
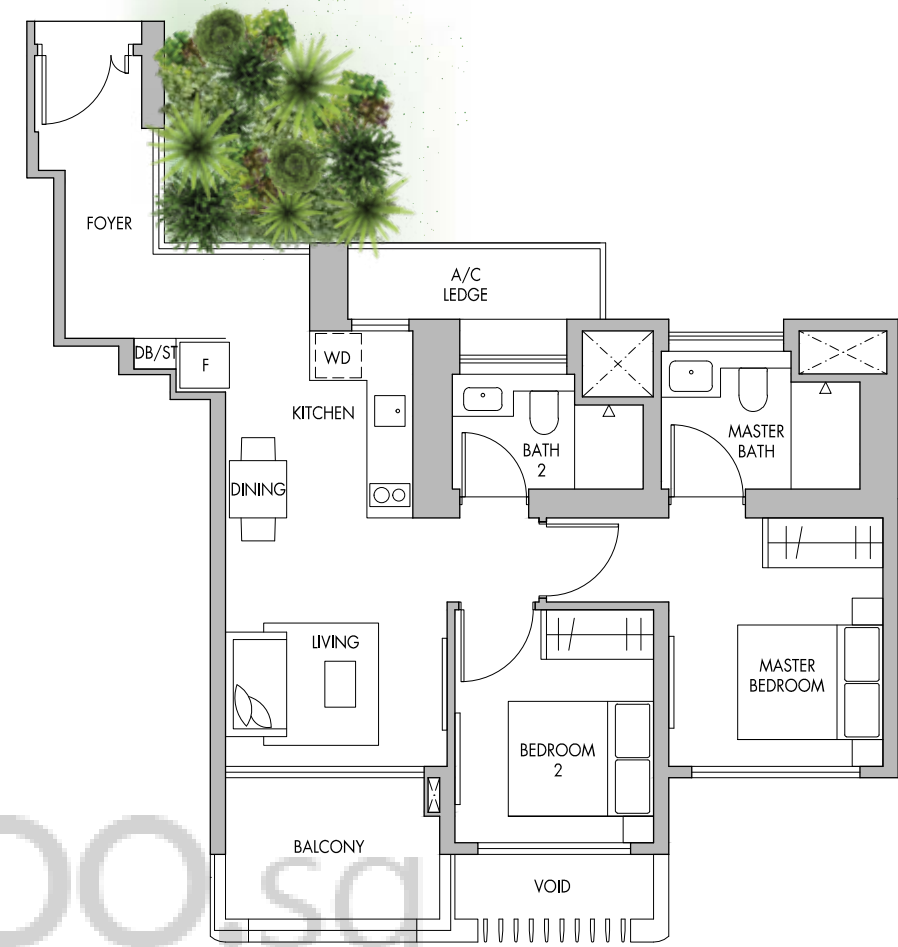
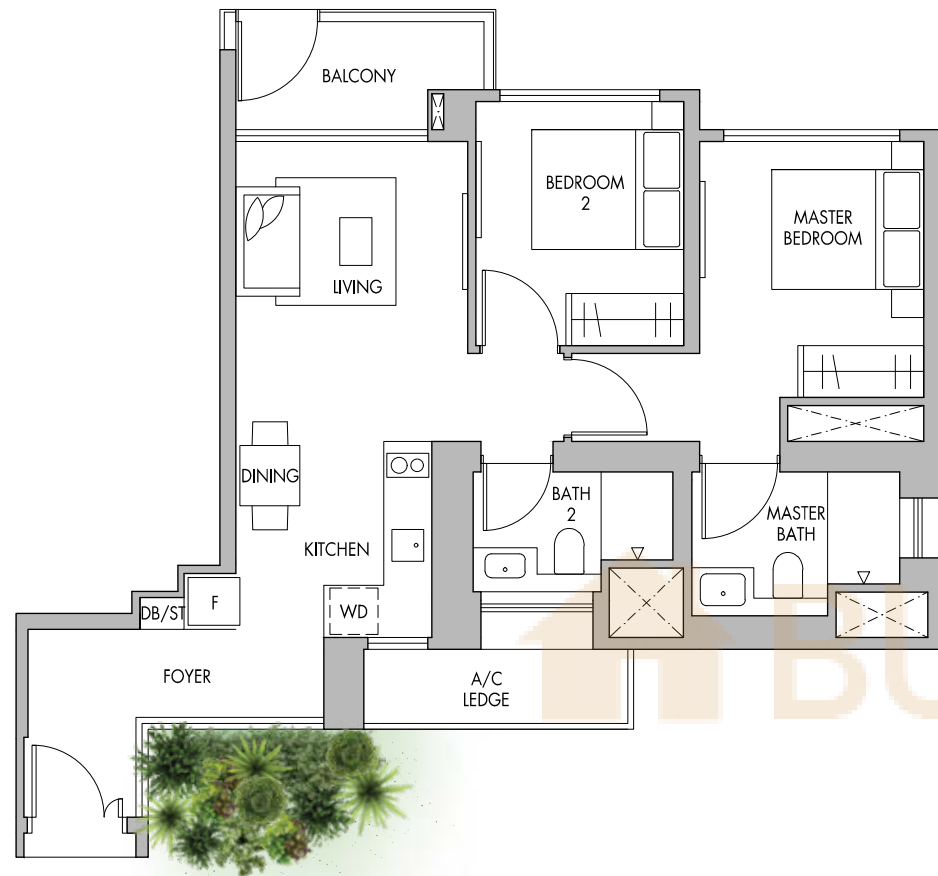
Area includes A/C ledge, balconies and void (if applicable). The above plans and illustrations are subject to changes as may be required by the relevant authorities. Areas are estimates only and are subject to final survey. The balcony shall not be enclosed unless with the approved screen. For an illustration of the approved balcony screen, please refer to the diagram annexed hereto as 'Annexure 1'.

2-Bedroom Premium

TYPE B7P

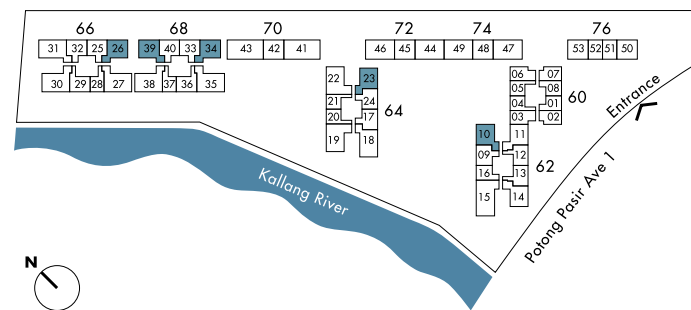
2-Bedroom Premium

TYPE B8



- Block 62**
#03-10
- Block 64**
#03-23 (Mirrored)
- Block 66**
#03-26
- Block 68**
#03-34
#03-39 (Mirrored)

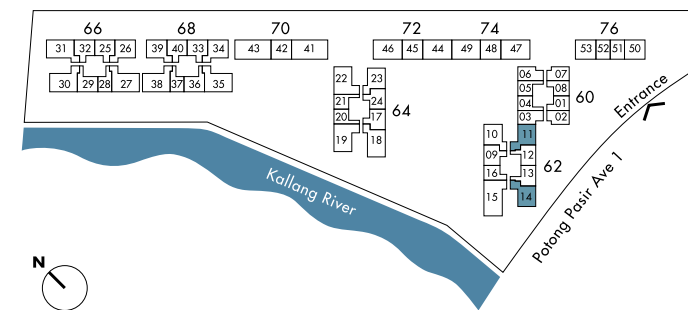
69 sq.m. | 743 sq.ft.



Area includes A/C ledge, balconies and void (if applicable). The above plans and illustrations are subject to changes as may be required by the relevant authorities. Areas are estimates only and are subject to final survey. The balcony shall not be enclosed unless with the approved screen. For an illustration of the approved balcony screen, please refer to the diagram annexed hereto as 'Annexure 1'.

TOWER BLOCK

TOWER BLOCK



- Block 62**
#04-11 to #07-11
#10-11
#11-11 to #19-11
(Mirrored) #03-14
(Mirrored) #04-14 to #19-14

70 sq.m. | 753 sq.ft.

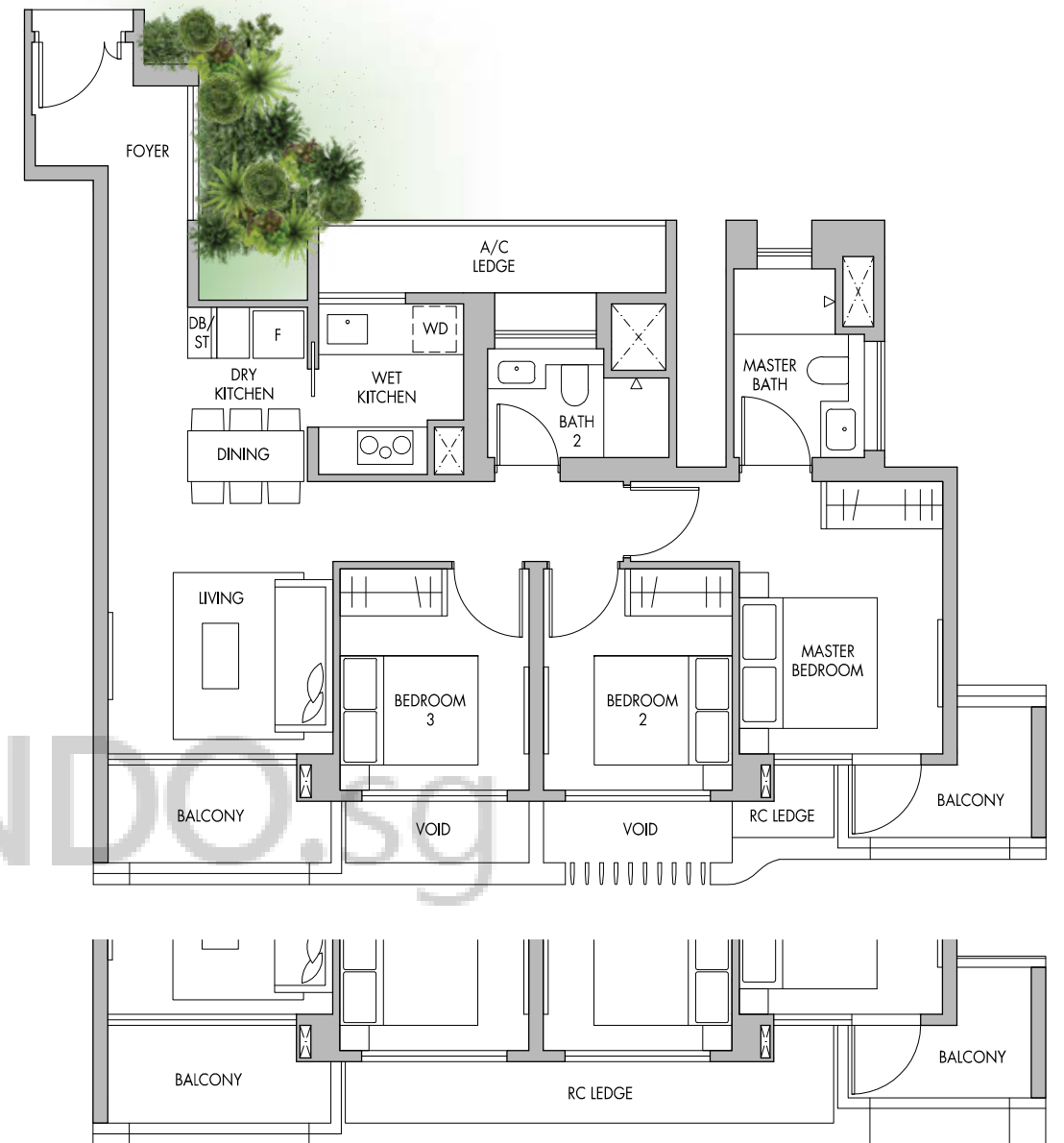
Area includes A/C ledge, balconies and void (if applicable). The above plans and illustrations are subject to changes as may be required by the relevant authorities. Areas are estimates only and are subject to final survey. The balcony shall not be enclosed unless with the approved screen. For an illustration of the approved balcony screen, please refer to the diagram annexed hereto as 'Annexure 1'.

2-Bedroom Premium

TYPE B8P

3-Bedroom

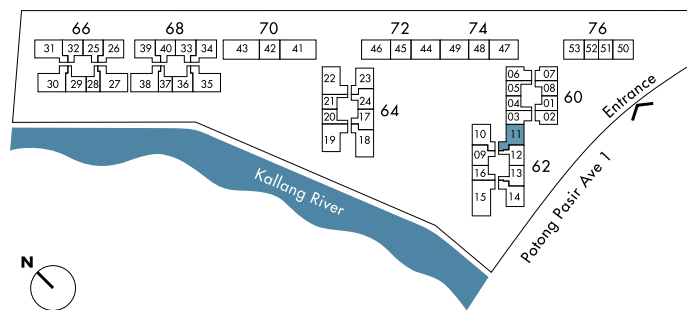
TYPE C1



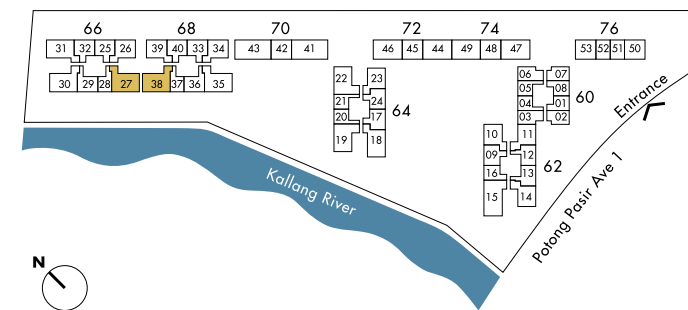
#03-27
(Mirrored) #03-38

Block 62
#03-11

70 sq.m. | 753 sq.ft.



Area includes A/C ledge, balconies and void (if applicable). The above plans and illustrations are subject to changes as may be required by the relevant authorities. Areas are estimates only and are subject to final survey. The balcony shall not be enclosed unless with the approved screen. For an illustration of the approved balcony screen, please refer to the diagram annexed hereto as 'Annexure 1'.



Area includes A/C ledge, balconies and void (if applicable). The above plans and illustrations are subject to changes as may be required by the relevant authorities. Areas are estimates only and are subject to final survey. The balcony shall not be enclosed unless with the approved screen. For an illustration of the approved balcony screen, please refer to the diagram annexed hereto as 'Annexure 1'.

Block 66
#03-27
#04-27 to #20-27

Block 68
(Mirrored) #03-38
(Mirrored) #04-38 to #20-38

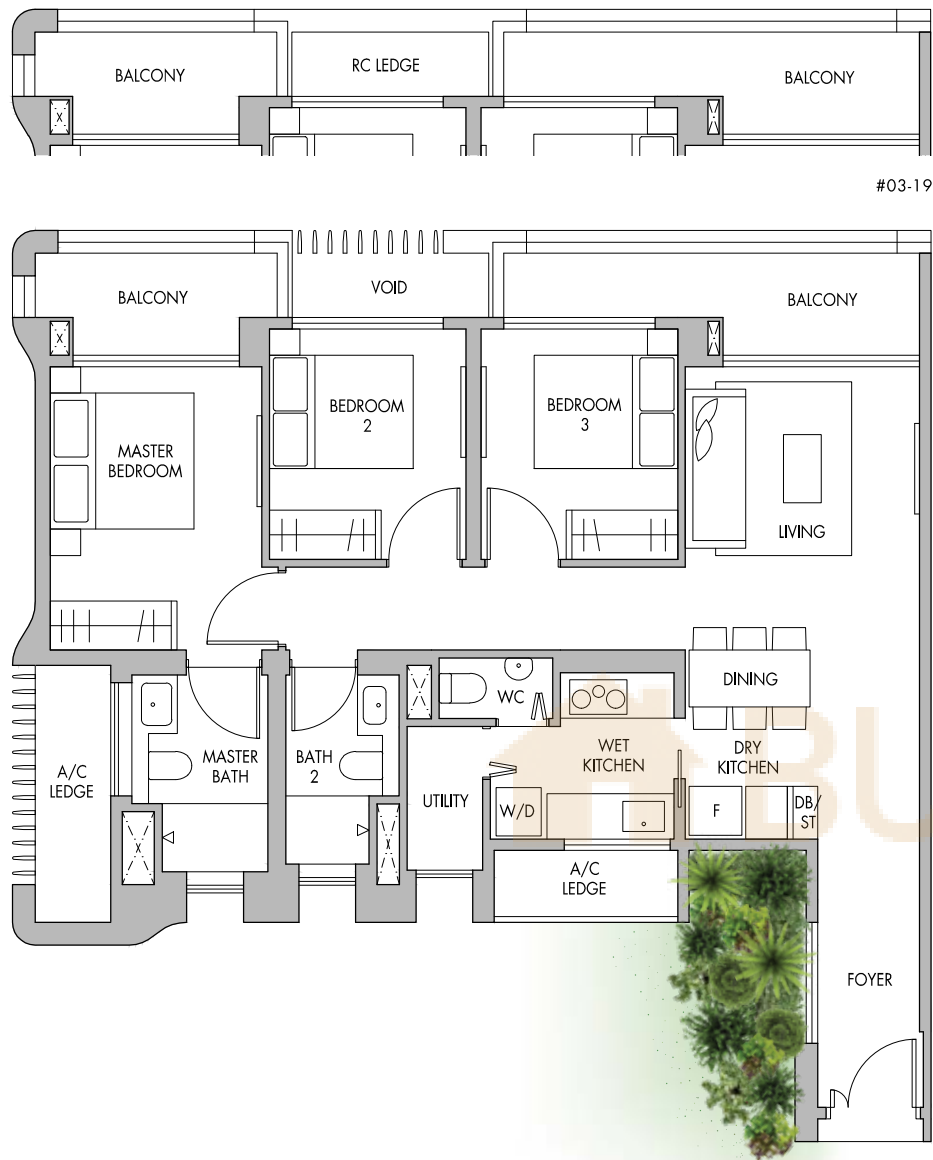
94 sq.m. | 1,012 sq.ft.

3-Bedroom Premium

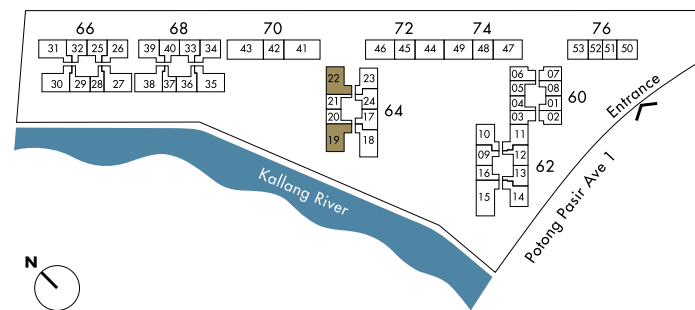
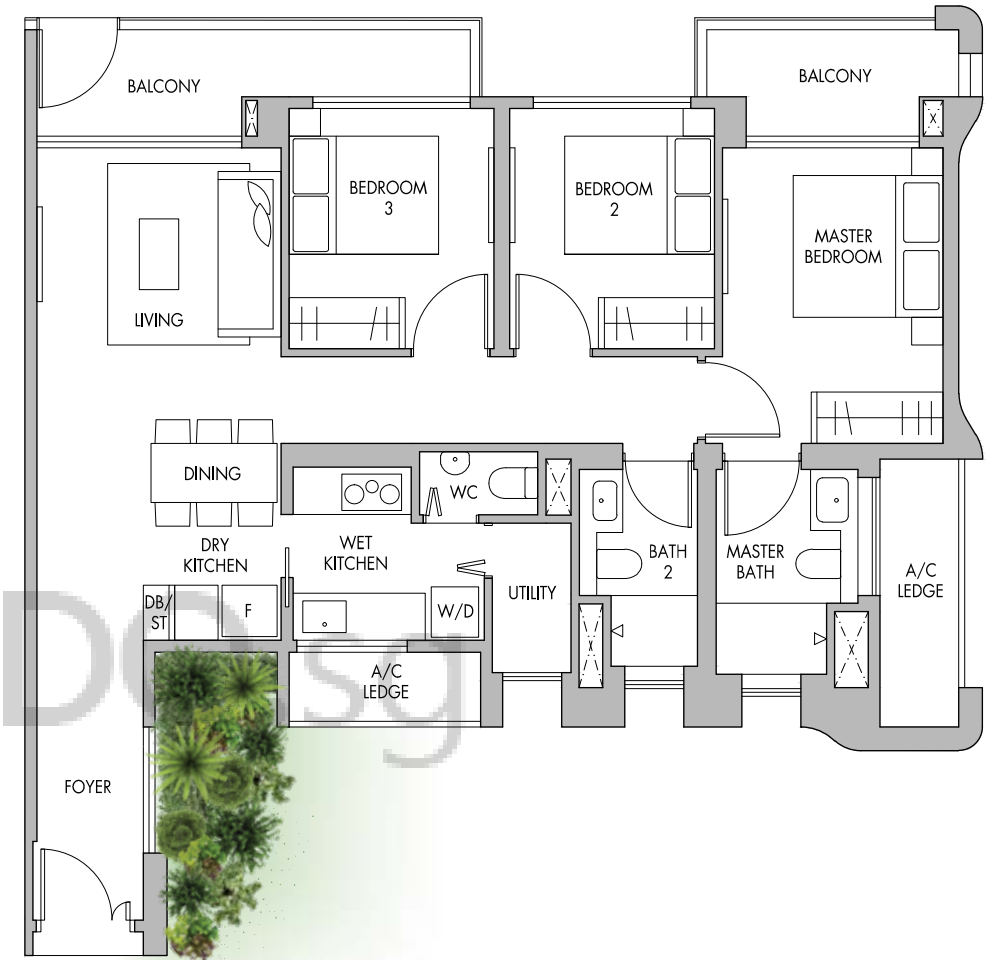
TYPE C3

3-Bedroom Premium

TYPE C3P

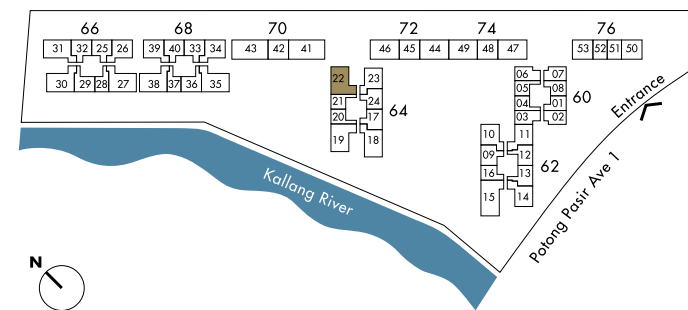


#03-19



Block 64
 #03-19
 #04-19 to #20-19
 #04-22 to #20-22 (Mirrored)

102 sq.m. | 1,098 sq.ft.



Block 64
 #03-22

102 sq.m. | 1,098 sq.ft.

Area includes A/C ledge, balconies and void (if applicable). The above plans and illustrations are subject to changes as may be required by the relevant authorities. Areas are estimates only and are subject to final survey. The balcony shall not be enclosed unless with the approved screen. For an illustration of the approved balcony screen, please refer to the diagram annexed hereto as 'Annexure 1'.

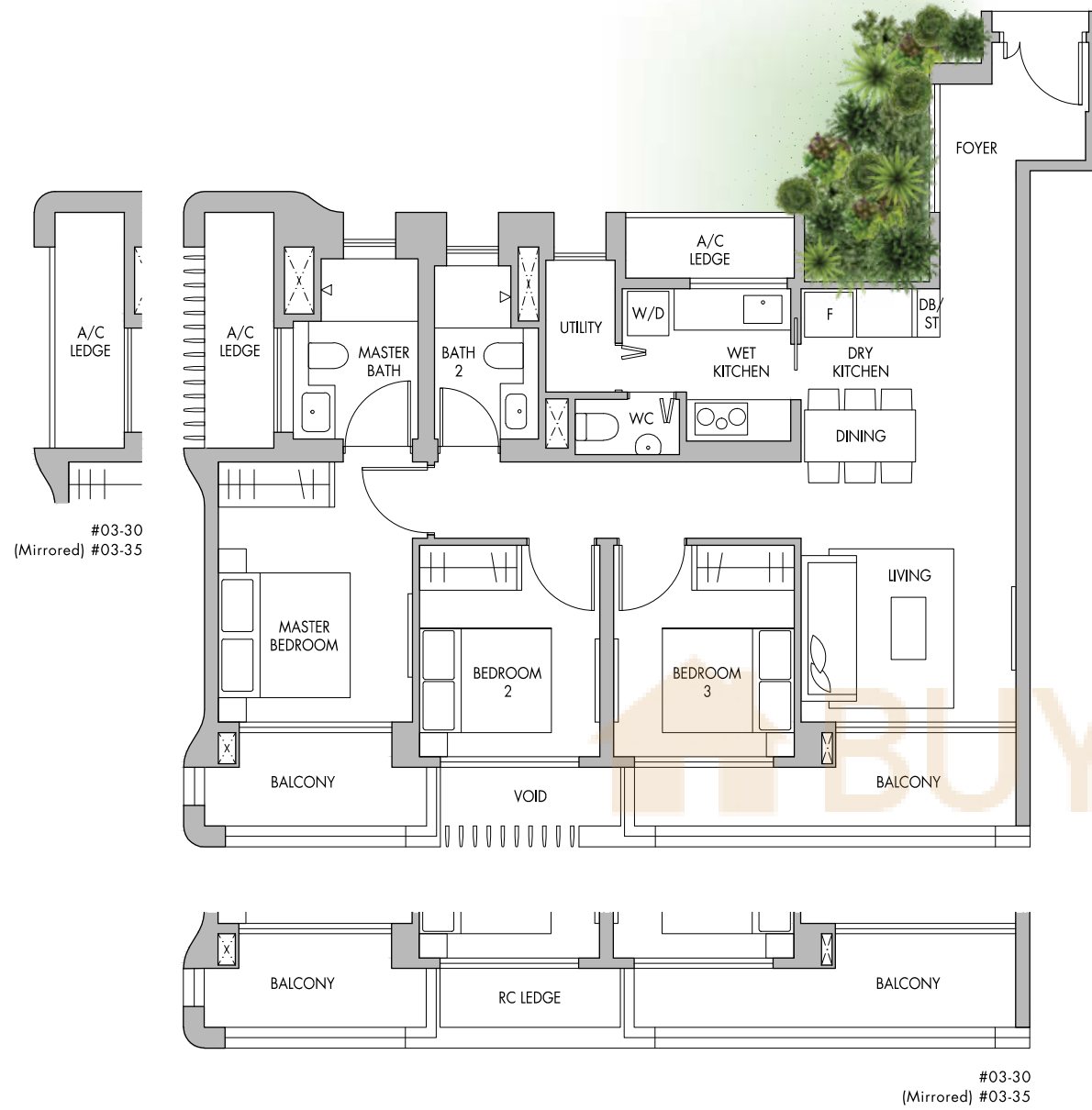
Area includes A/C ledge, balconies and void (if applicable). The above plans and illustrations are subject to changes as may be required by the relevant authorities. Areas are estimates only and are subject to final survey. The balcony shall not be enclosed unless with the approved screen. For an illustration of the approved balcony screen, please refer to the diagram annexed hereto as 'Annexure 1'.

TOWER BLOCK

TOWER BLOCK

3-Bedroom Premium

TYPE C4

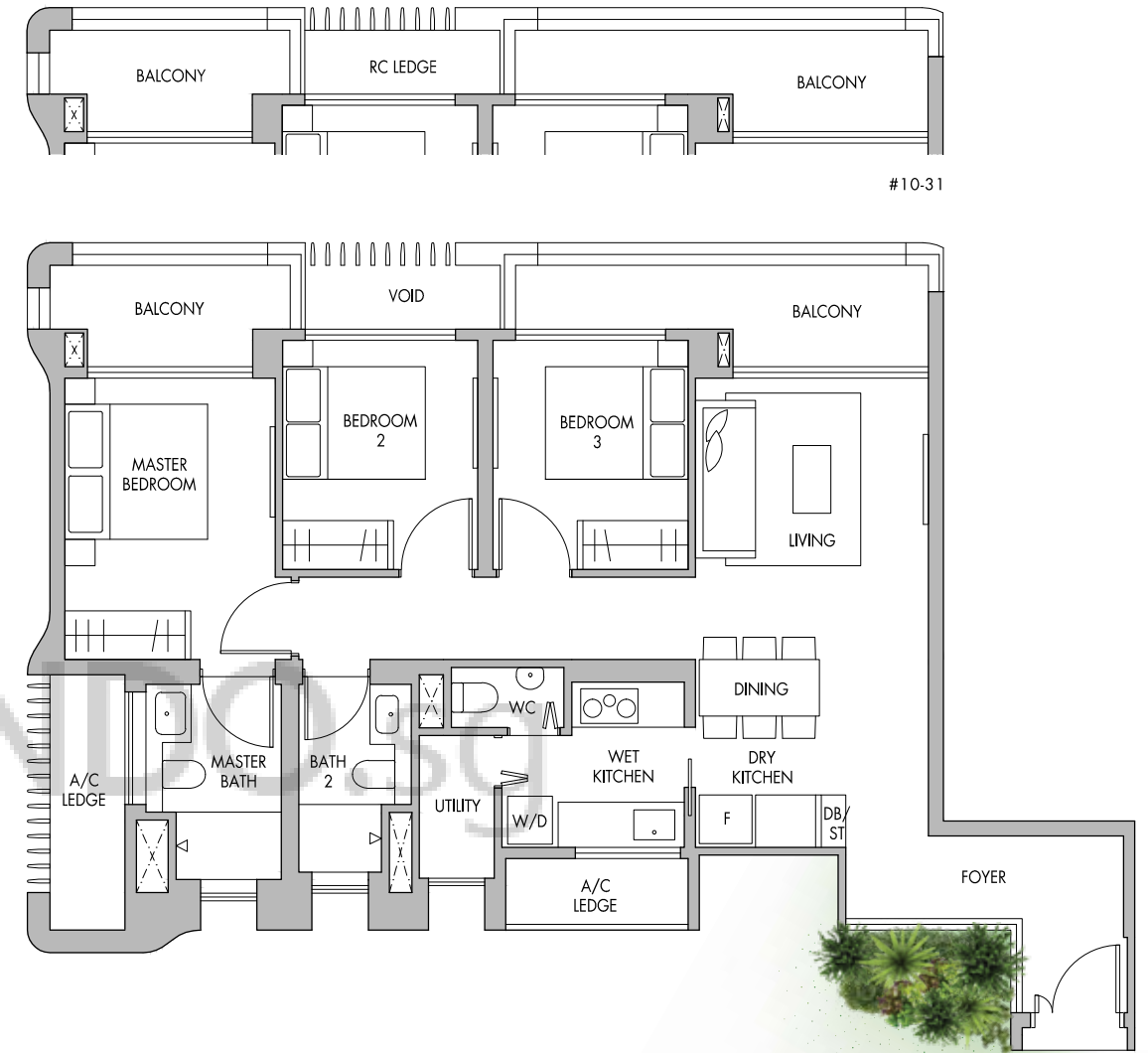


#03-30
(Mirrored) #03-35

#03-30
(Mirrored) #03-35

3-Bedroom Premium

TYPE C5



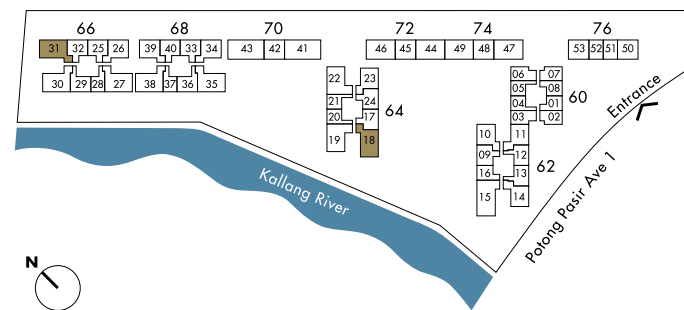
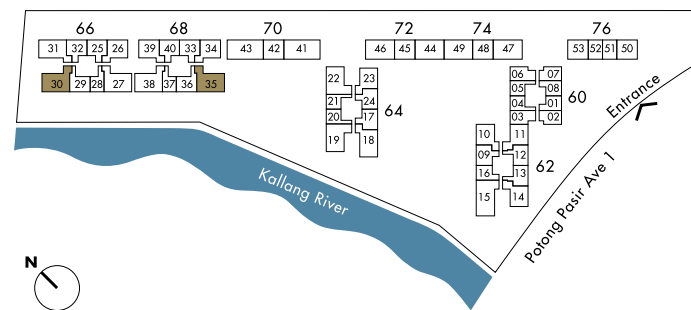
#10-31

#10-32

Block 66
#03-30
#04-30 to #20-30

Block 68
#03-35 (Mirrored)
#04-35 to #20-35 (Mirrored)

102 sq.m. | 1,098 sq.ft.



Block 64
(Mirrored) #04-18 to #20-18

Block 66
#04-31 to #07-31
#10-31
#11-31 to #20-31

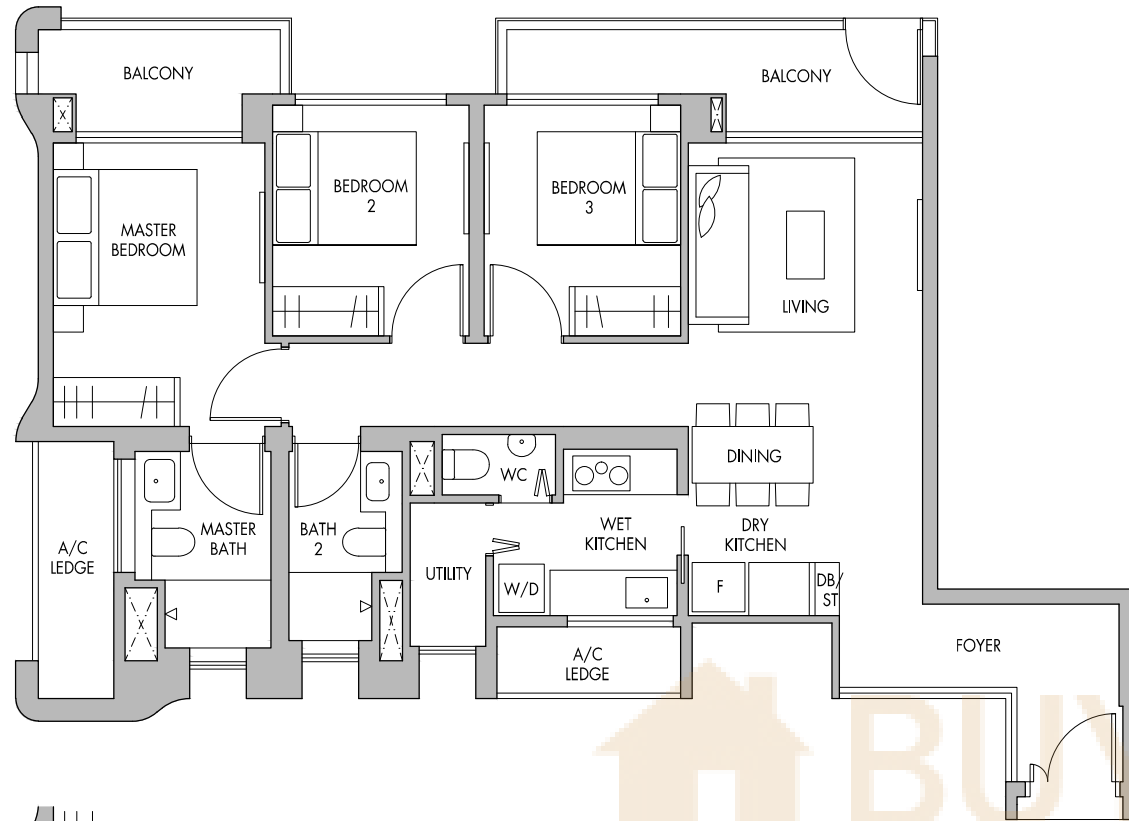
103 sq.m. | 1,109 sq.ft.

Area includes A/C ledge, balconies and void (if applicable). The above plans and illustrations are subject to changes as may be required by the relevant authorities. Areas are estimates only and are subject to final survey. The balcony shall not be enclosed unless with the approved screen. For an illustration of the approved balcony screen, please refer to the diagram annexed hereto as 'Annexure 1'.

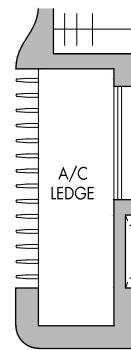
Area includes A/C ledge, balconies and void (if applicable). The above plans and illustrations are subject to changes as may be required by the relevant authorities. Areas are estimates only and are subject to final survey. The balcony shall not be enclosed unless with the approved screen. For an illustration of the approved balcony screen, please refer to the diagram annexed hereto as 'Annexure 1'.

3-Bedroom Premium

TYPE C5P



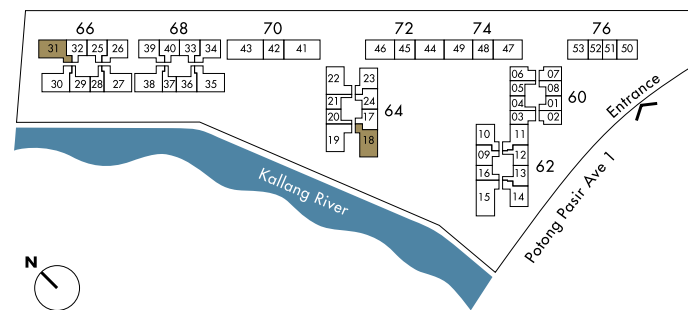
(Mirrored) #03-18



Block 64
#03-18 (Mirrored)

Block 66
#03-31

103 sq.m. | 1,109 sq.ft.



Area includes A/C ledge, balconies and void (if applicable). The above plans and illustrations are subject to changes as may be required by the relevant authorities. Areas are estimates only and are subject to final survey. The balcony shall not be enclosed unless with the approved screen. For an illustration of the approved balcony screen, please refer to the diagram annexed hereto as 'Annexure 1'.

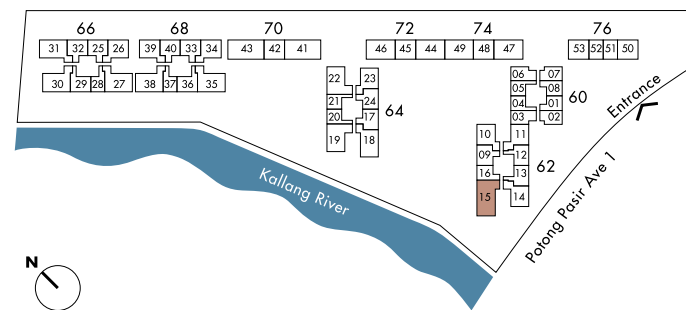
4-Bedroom

TYPE D2



TOWER BLOCK

TOWER BLOCK



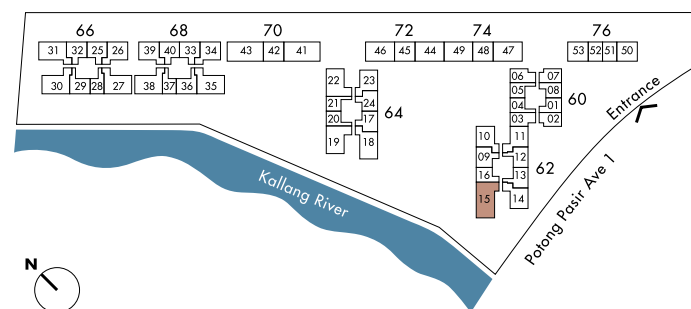
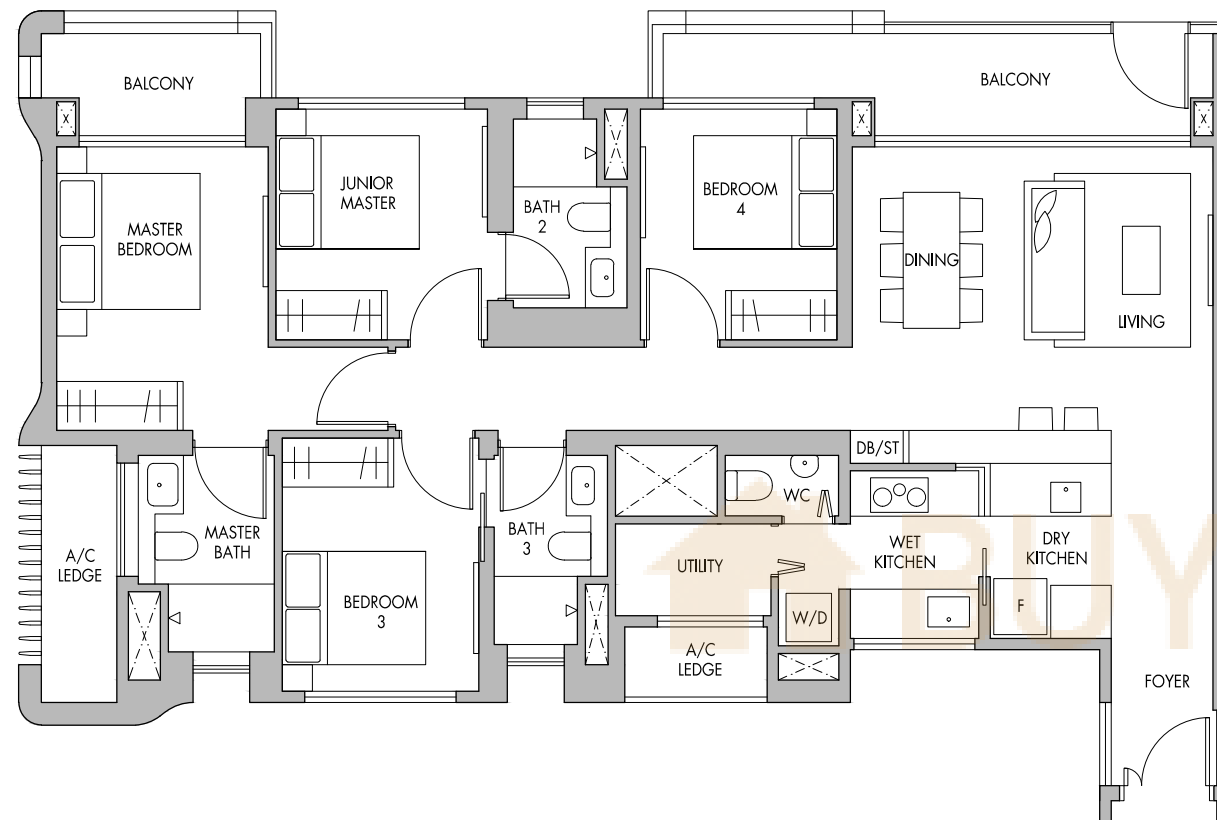
Block 62
#04-15 to #19-15

128 sq.m. | 1,378 sq.ft.

Area includes A/C ledge, balconies and void (if applicable). The above plans and illustrations are subject to changes as may be required by the relevant authorities. Areas are estimates only and are subject to final survey. The balcony shall not be enclosed unless with the approved screen. For an illustration of the approved balcony screen, please refer to the diagram annexed hereto as 'Annexure 1'.

4-Bedroom

TYPE D2P



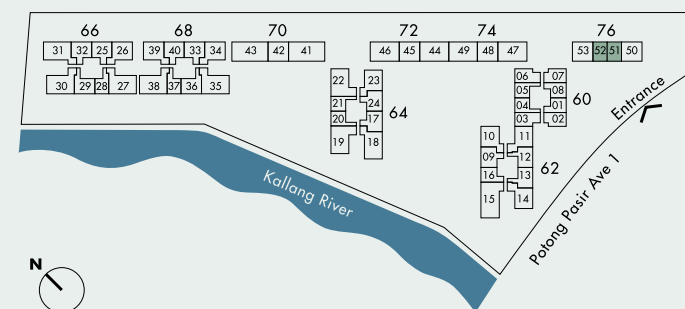
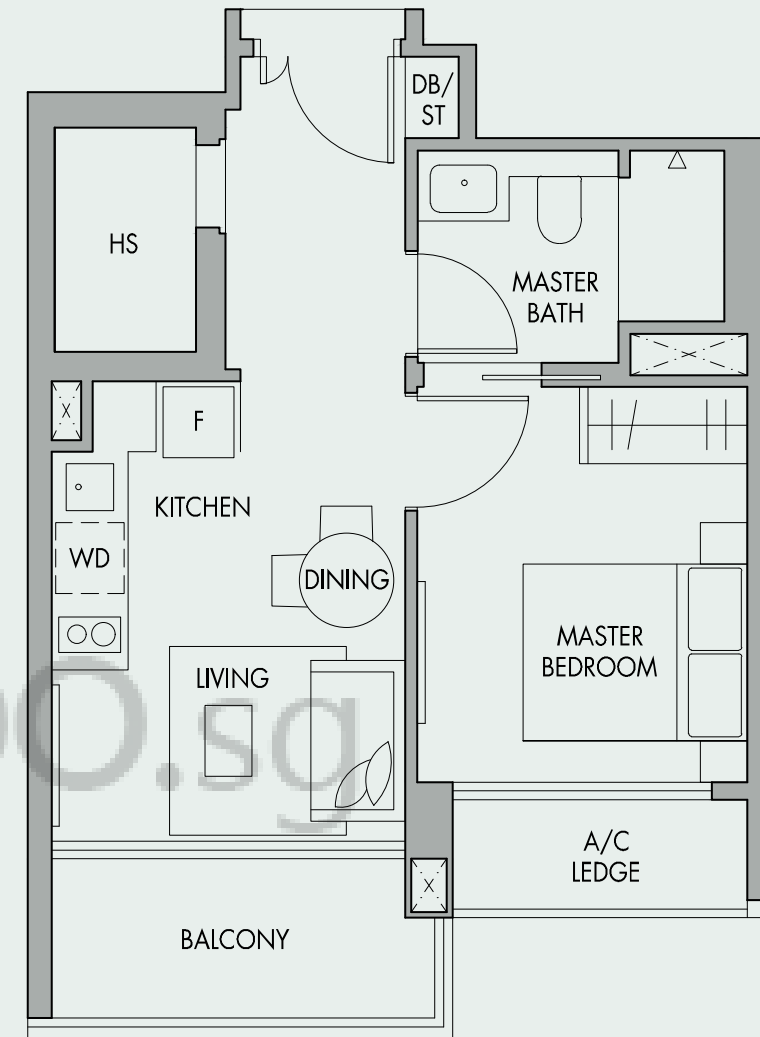
Block 62
#03-15

128 sq.m. | 1,378 sq.ft.

Area includes A/C ledge, balconies and void (if applicable). The above plans and illustrations are subject to changes as may be required by the relevant authorities. Areas are estimates only and are subject to final survey. The balcony shall not be enclosed unless with the approved screen. For an illustration of the approved balcony screen, please refer to the diagram annexed hereto as 'Annexure 1'.

1-Bedroom

TYPE A1



Block 76
#04-51 to #07-51
(Mirrored) #04-52 to #07-52

45 sq.m. | 484 sq.ft.

Area includes A/C ledge, balconies and void (if applicable). The above plans and illustrations are subject to changes as may be required by the relevant authorities. Areas are estimates only and are subject to final survey. The balcony shall not be enclosed unless with the approved screen. For an illustration of the approved balcony screen, please refer to the diagram annexed hereto as 'Annexure 1'.

TOWER BLOCK

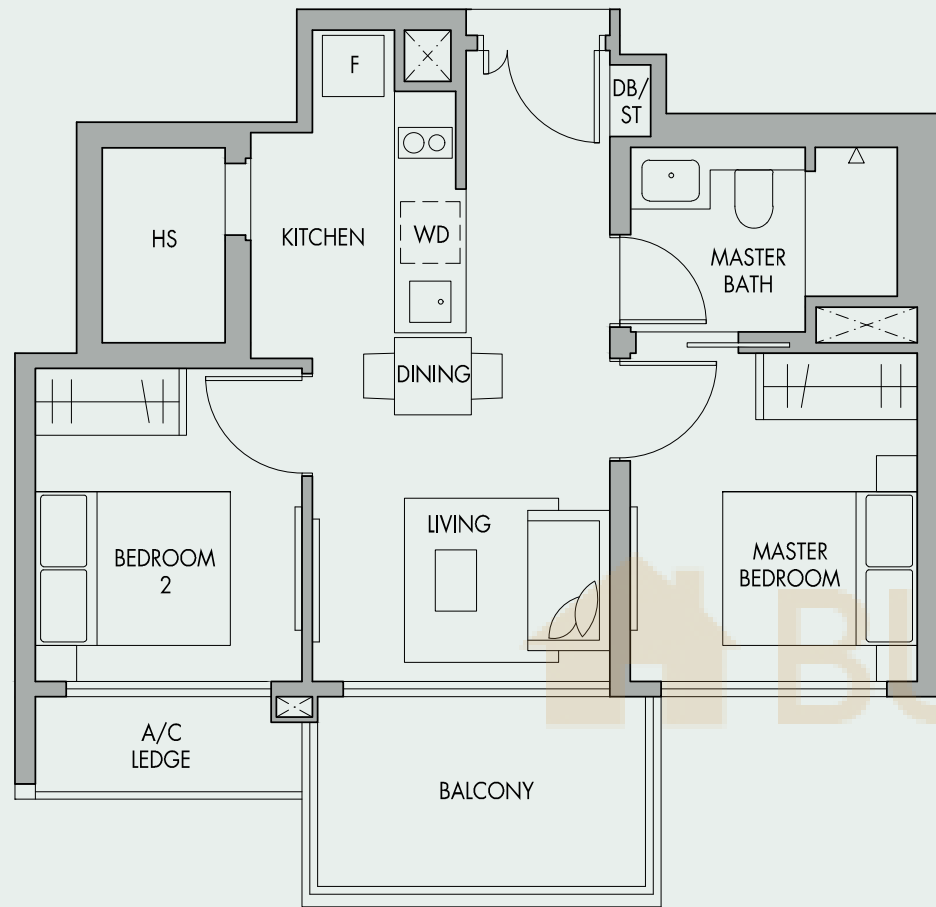
GARDEN BLOCK

2-Bedroom

TYPE B4

2-Bedroom

TYPE B4P

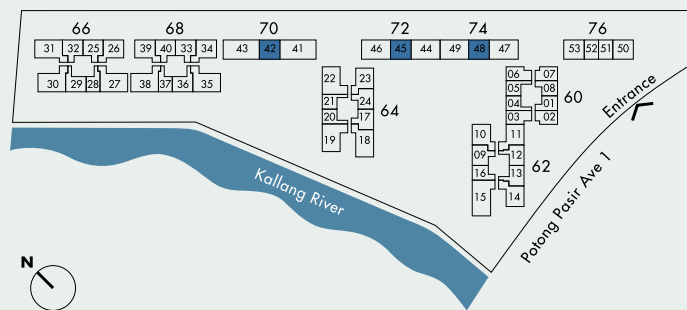


Block 70
#04-42 to #07-42

Block 72
#04-45 to #07-45

Block 74
#04-48 to #07-48 (Mirrored)

59 sq.m. | 635 sq.ft.



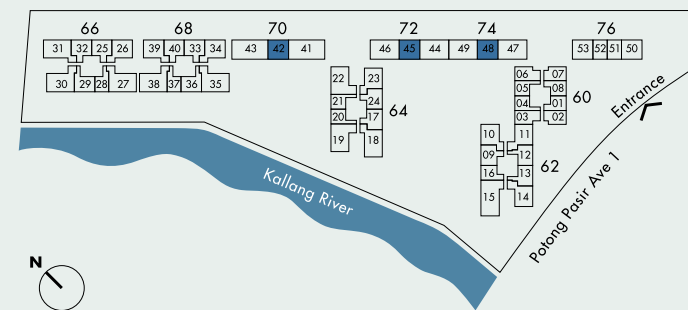
Area includes A/C ledge, balconies and void (if applicable). The above plans and illustrations are subject to changes as may be required by the relevant authorities. Areas are estimates only and are subject to final survey. The balcony shall not be enclosed unless with the approved screen. For an illustration of the approved balcony screen, please refer to the diagram annexed hereto as 'Annexure 1'.

Block 70
#03-42

Block 72
#03-45

Block 74
(Mirrored) #03-48

59 sq.m. | 635 sq.ft.



Area includes A/C ledge, balconies and void (if applicable). The above plans and illustrations are subject to changes as may be required by the relevant authorities. Areas are estimates only and are subject to final survey. The balcony shall not be enclosed unless with the approved screen. For an illustration of the approved balcony screen, please refer to the diagram annexed hereto as 'Annexure 1'.

2-Bedroom Premium

TYPE B9



3-Bedroom Premium

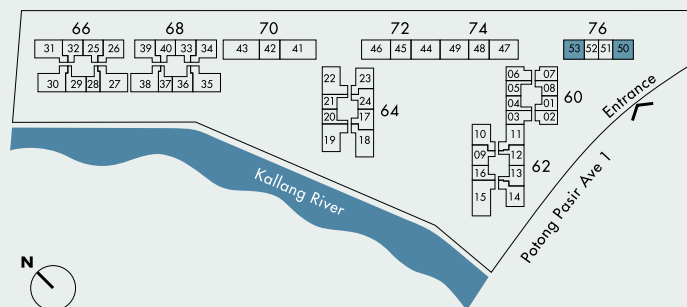
TYPE C2



Block 76

#04-50 to #07-50
#04-53 to #07-53 (Mirrored)

74 sq.m. | 797 sq.ft.



Area includes A/C ledge, balconies and void (if applicable). The above plans and illustrations are subject to changes as may be required by the relevant authorities. Areas are estimates only and are subject to final survey. The balcony shall not be enclosed unless with the approved screen. For an illustration of the approved balcony screen, please refer to the diagram annexed hereto as 'Annexure 1'.

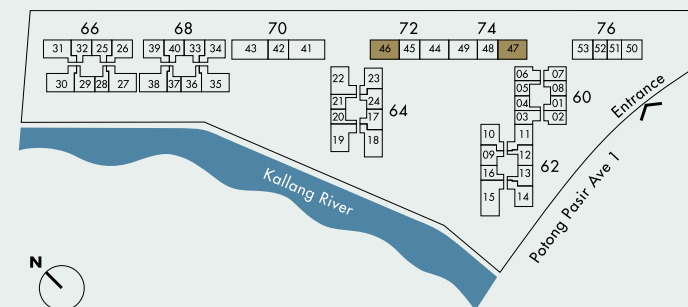
Block 72

#04-46 to #07-46

Block 74

(Mirrored) #04-47 to #07-47

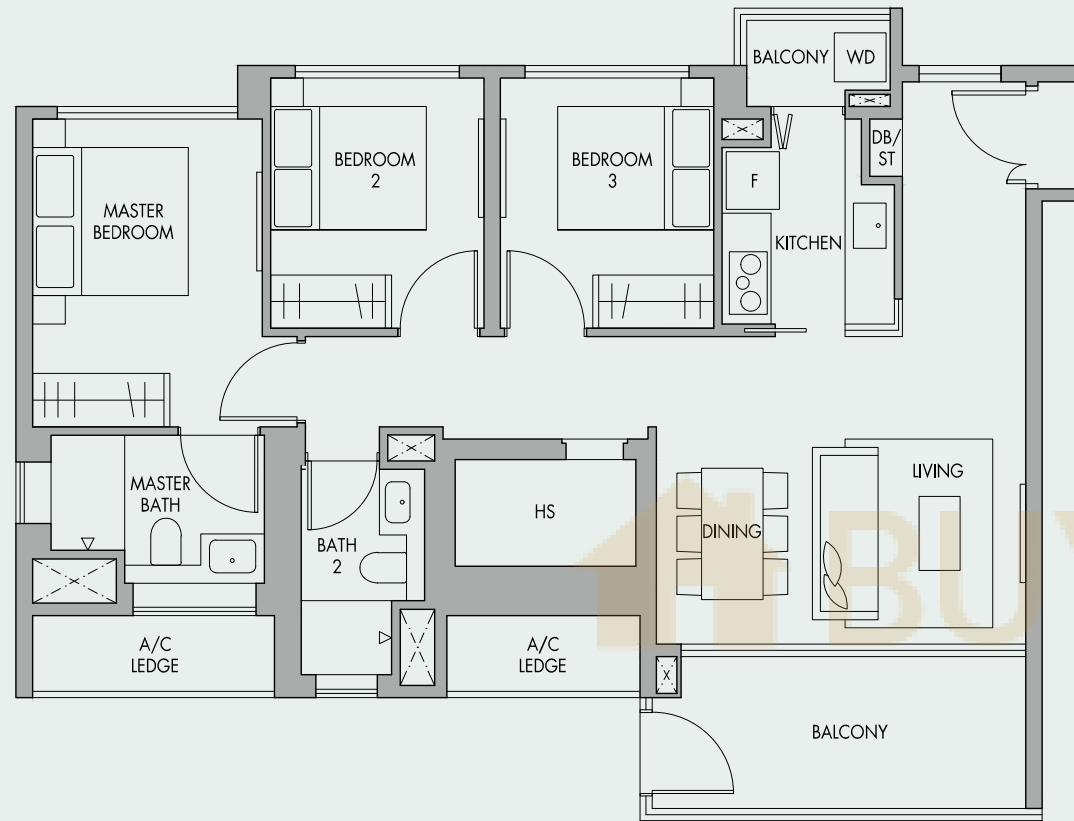
98 sq.m. | 1,055 sq.ft.



Area includes A/C ledge, balconies and void (if applicable). The above plans and illustrations are subject to changes as may be required by the relevant authorities. Areas are estimates only and are subject to final survey. The balcony shall not be enclosed unless with the approved screen. For an illustration of the approved balcony screen, please refer to the diagram annexed hereto as 'Annexure 1'.

3-Bedroom Premium

TYPE C2P



3-Bedroom Premium

TYPE C6



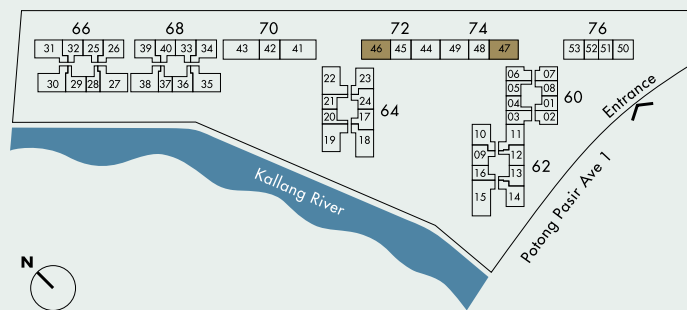
Block 72

#03-46

Block 74

#03-47 (Mirrored)

98 sq.m. | 1,055 sq.ft.



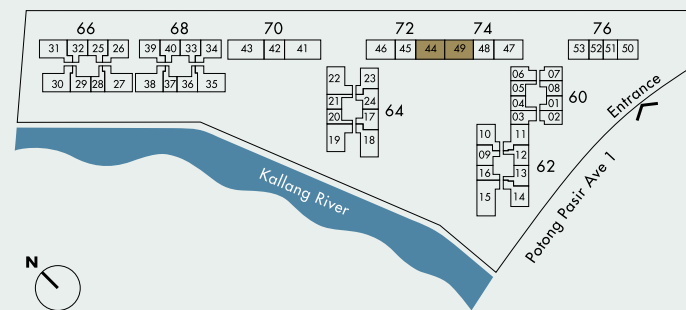
Block 72

#04-44 to #07-44

Block 74

(Mirrored) #04-49 to #07-49

102 sq.m. | 1,098 sq.ft.

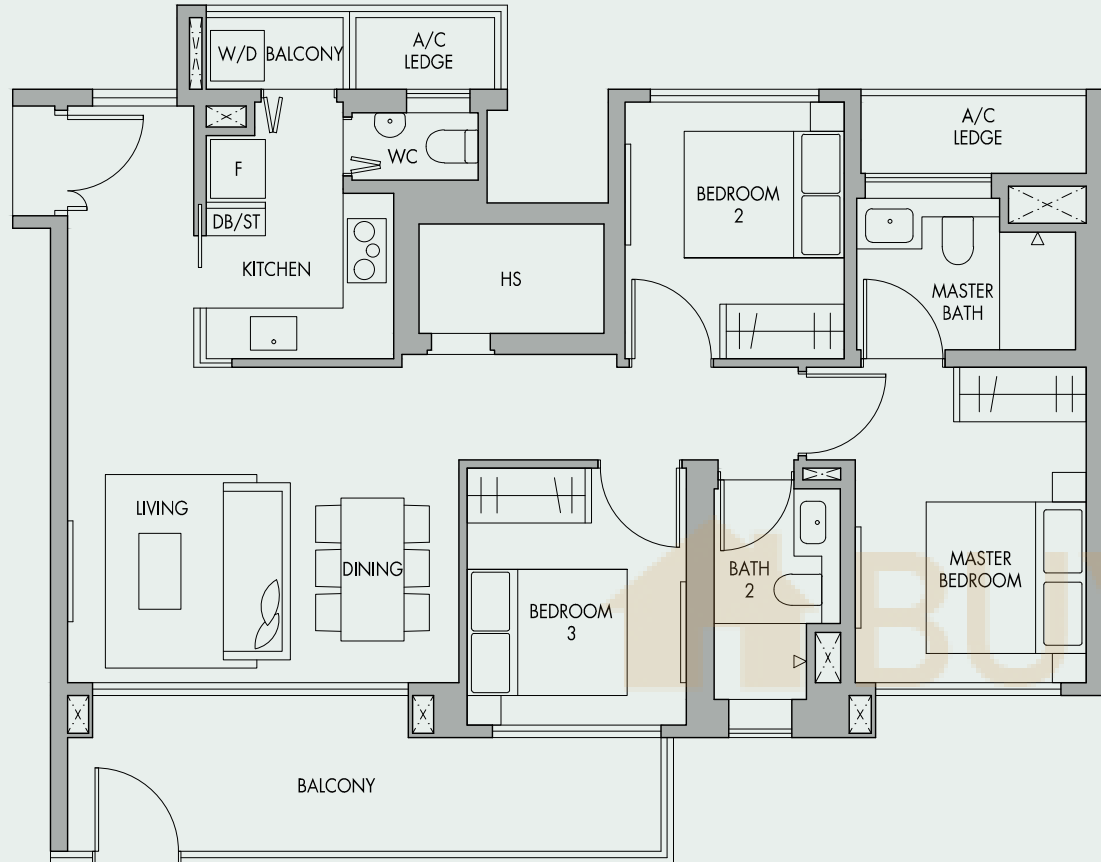


Area includes A/C ledge, balconies and void (if applicable). The above plans and illustrations are subject to changes as may be required by the relevant authorities. Areas are estimates only and are subject to final survey. The balcony shall not be enclosed unless with the approved screen. For an illustration of the approved balcony screen, please refer to the diagram annexed hereto as 'Annexure 1'.

Area includes A/C ledge, balconies and void (if applicable). The above plans and illustrations are subject to changes as may be required by the relevant authorities. Areas are estimates only and are subject to final survey. The balcony shall not be enclosed unless with the approved screen. For an illustration of the approved balcony screen, please refer to the diagram annexed hereto as 'Annexure 1'.

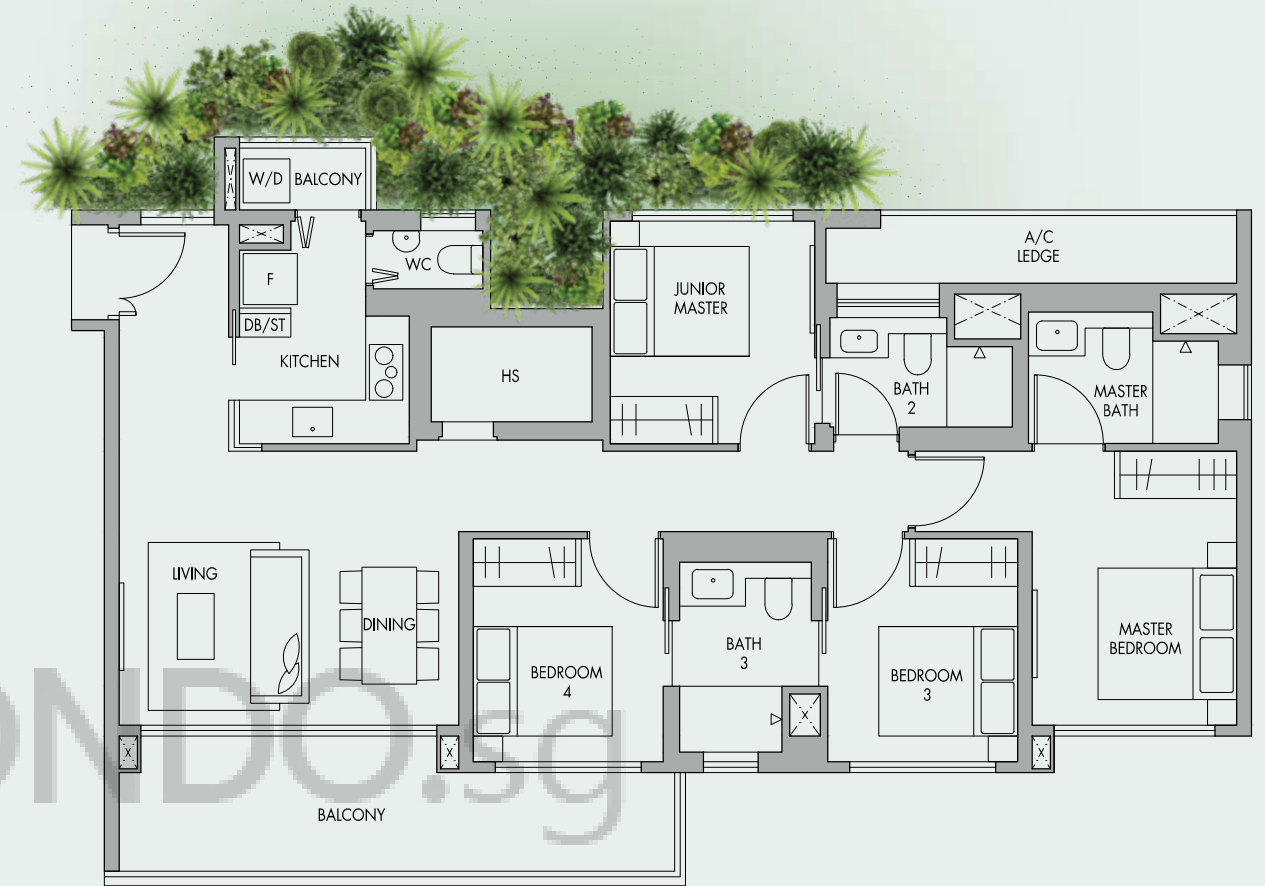
3-Bedroom Premium

TYPE C6P



4-Bedroom Premium

TYPE D1



GARDEN BLOCK

GARDEN BLOCK

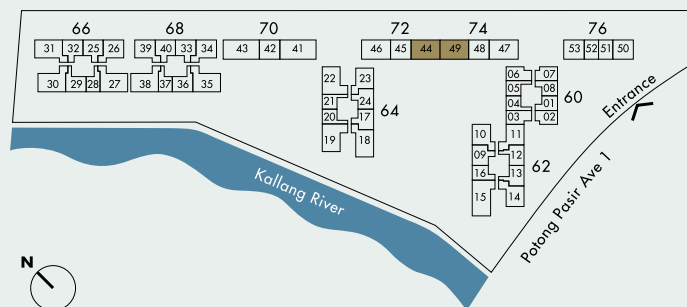
Block 72

#03-44

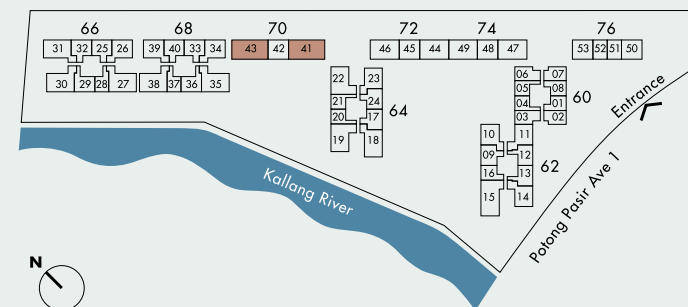
Block 74

#03-49 (Mirrored)

102 sq.m. | 1,098 sq.ft.



Area includes A/C ledge, balconies and void (if applicable). The above plans and illustrations are subject to changes as may be required by the relevant authorities. Areas are estimates only and are subject to final survey. The balcony shall not be enclosed unless with the approved screen. For an illustration of the approved balcony screen, please refer to the diagram annexed hereto as 'Annexure 1'.



Block 70

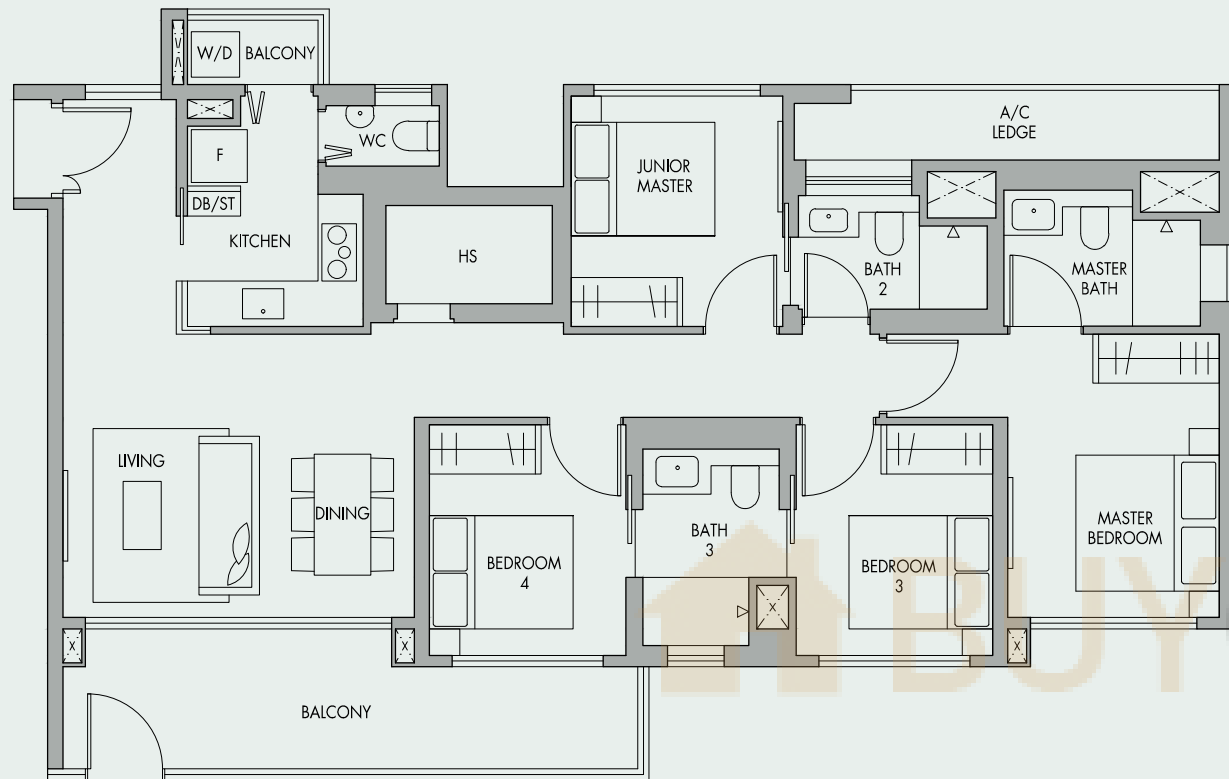
#04-41 to #07-41
(Mirrored) #04-43 to #07-43

124 sq.m. | 1,335 sq.ft.

Area includes A/C ledge, balconies and void (if applicable). The above plans and illustrations are subject to changes as may be required by the relevant authorities. Areas are estimates only and are subject to final survey. The balcony shall not be enclosed unless with the approved screen. For an illustration of the approved balcony screen, please refer to the diagram annexed hereto as 'Annexure 1'.

4-Bedroom

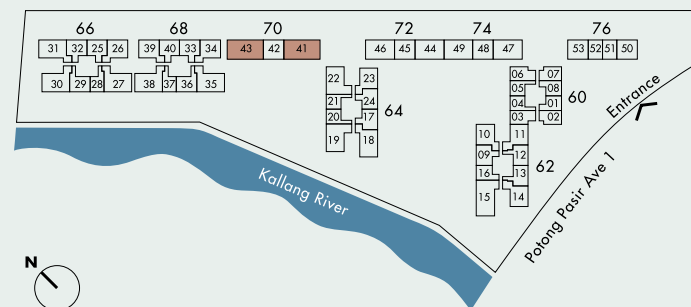
TYPE D1P



Block 70

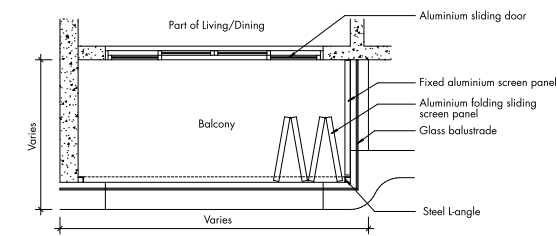
#03-41
#03-43 (Mirrored)

124 sq.m. | 1,335 sq.ft.

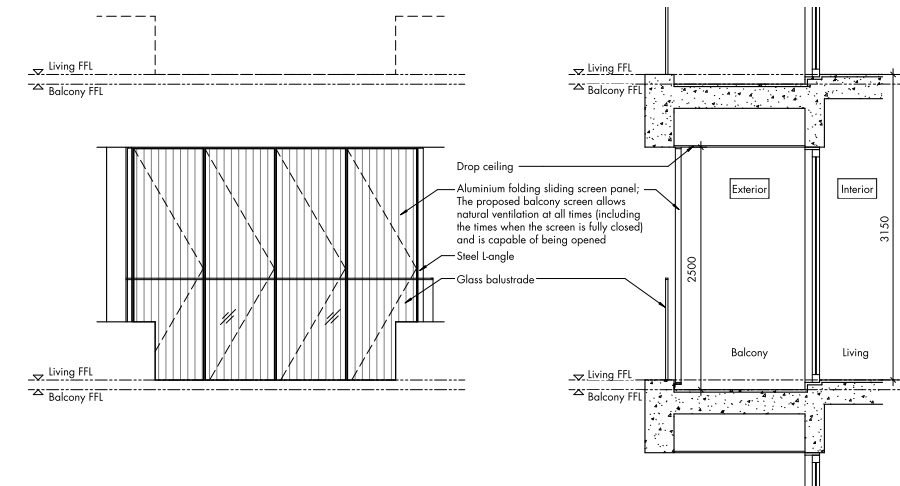


Area includes A/C ledge, balconies and void (if applicable). The above plans and illustrations are subject to changes as may be required by the relevant authorities. Areas are estimates only and are subject to final survey. The balcony shall not be enclosed unless with the approved screen. For an illustration of the approved balcony screen, please refer to the diagram annexed hereto as 'Annexure 1'.

Annexure 1

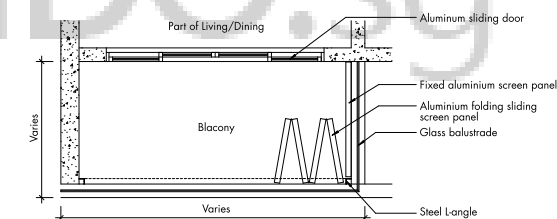


Tower Block
Typical Retractable Balcony Screen - Plan

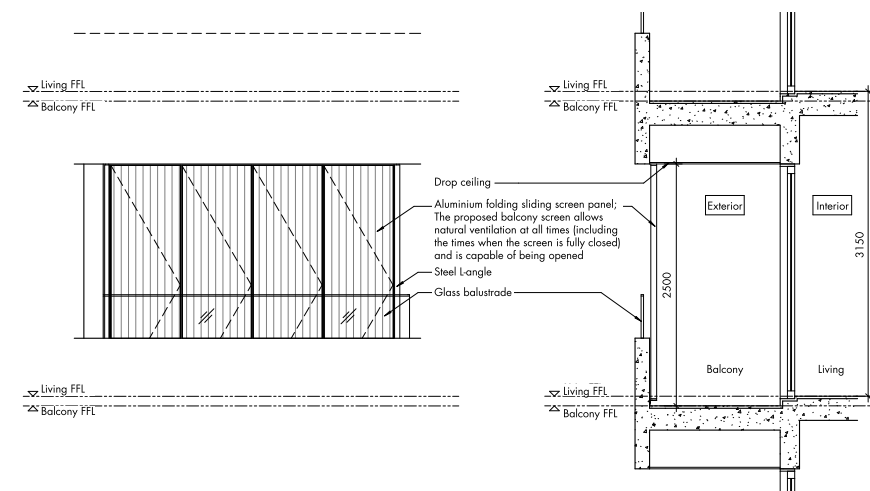


Tower Block
Typical Retractable Balcony Screen - Elevation

Tower Block
Typical Retractable Balcony Screen - Section



Garden Block
Typical Retractable Balcony Screen - Plan



Garden Block
Typical Retractable Balcony Screen - Elevation

Garden Block
Typical Retractable Balcony Screen - Section

Note: The cost of the screen and installation shall be borne by the Purchaser. Actual profile of the screen is subjected to manufacturer's detail. The proposed balcony screen allows natural ventilation at all times (including the times when the screen is fully closed).