

**TYPE A1**

**71 sq m / 764 sq ft**

#02 - 23 to #14 - 23

#02 - 31 to #14 - 31

**Mirror Unit**

#02 - 36 to #14 - 36

**TYPE A1-P**

**72 sq m / 775 sq ft**

#01 - 23, #01 - 31

**Mirror Unit**

#01 - 36

**TYPE A1-T**

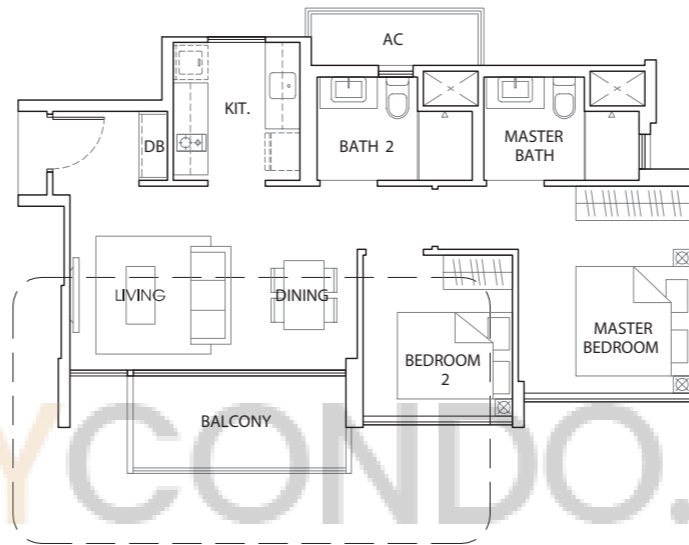
**71 sq m / 764 sq ft**

#15 - 23, #15 - 31

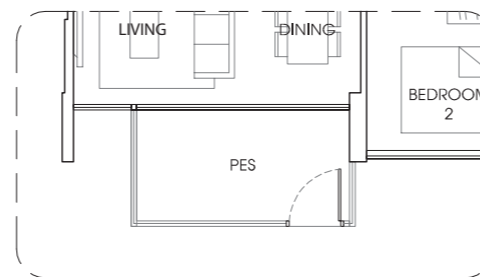
**Mirror Unit**

#15 - 36

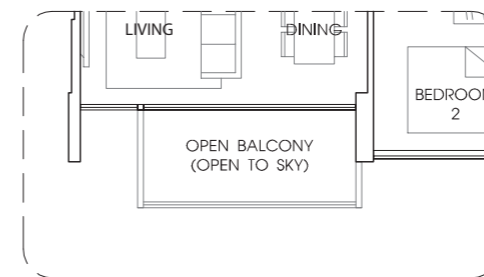
**TYPE A1**



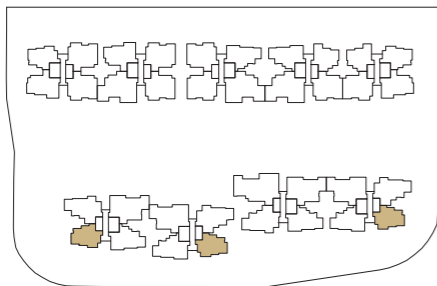
**TYPE A1-P**



**TYPE A1-T**

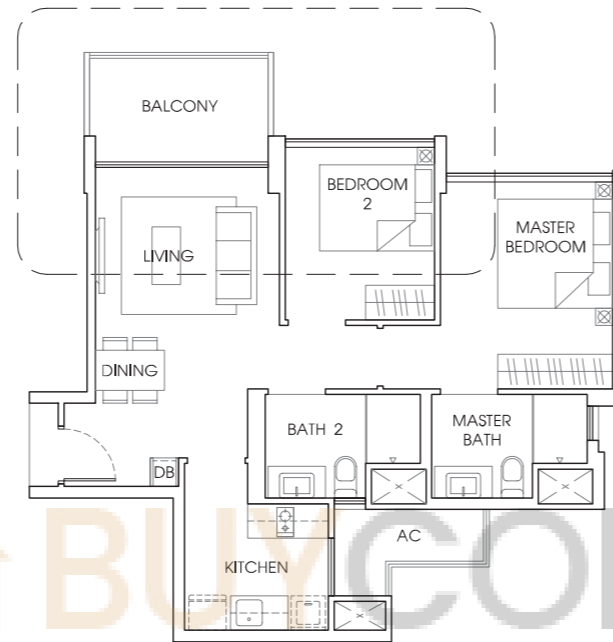


**KEY PLAN**



Area includes A/C ledge, balcony, PES, roof terrace and void (where applicable). Orientation and facings will differ depending on the unit you are purchasing (please refer to the key plan). All plans are not to scale and subject to changes as may be required by relevant authorities. All floor areas are estimated and subjected to final survey.

**TYPE A1a**



**TYPE A1a**  
70 sq m / 753 sq ft  
#02 - 14 to #14 - 14

**Mirror Unit**  
#02 - 17 to #14 - 17

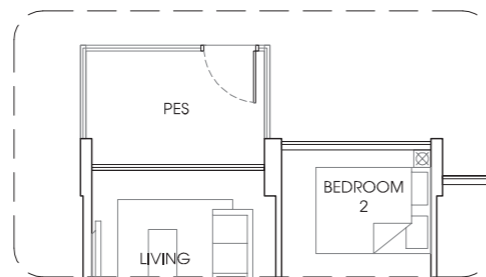
**TYPE A1a-P**  
71 sq m / 764 sq ft  
#01 - 14

**Mirror Unit**  
#01 - 17

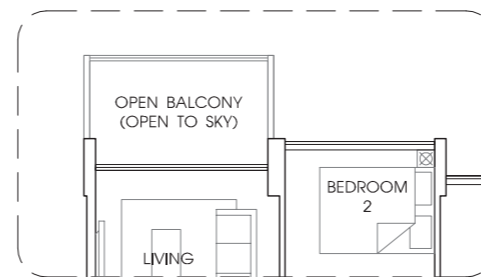
**TYPE A1a-T**  
70 sq m / 753 sq ft  
#15 - 14

**Mirror Unit**  
#15 - 17

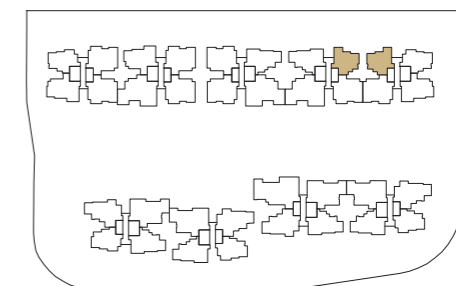
**TYPE A1a-P**



**TYPE A1a -T**



**KEY PLAN**



Area includes A/C ledge, balcony, PES, roof terrace and void (where applicable). Orientation and facings will differ depending on the unit you are purchasing (please refer to the key plan). All plans are not to scale and subject to changes as may be required by relevant authorities. All floor areas are estimated and subjected to final survey.

**TYPE A2**

**71 sq m / 764 sq ft**  
#02 - 01 to #14 - 01

**Mirror Unit**

#02 - 18 to #14 - 18

**TYPE A2-P**

**72 sq m / 775 sq ft**  
Mirror Unit

#01 - 18

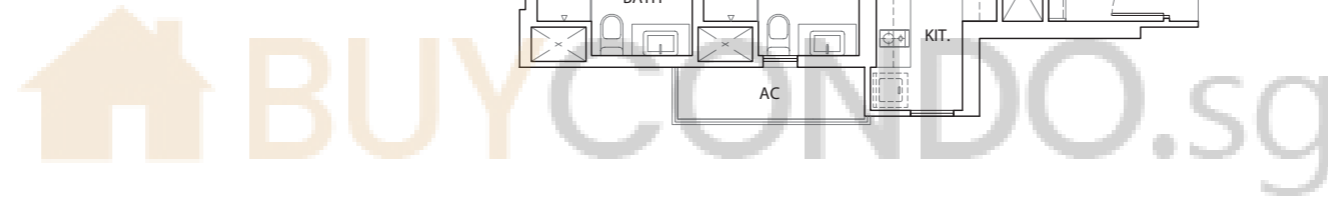
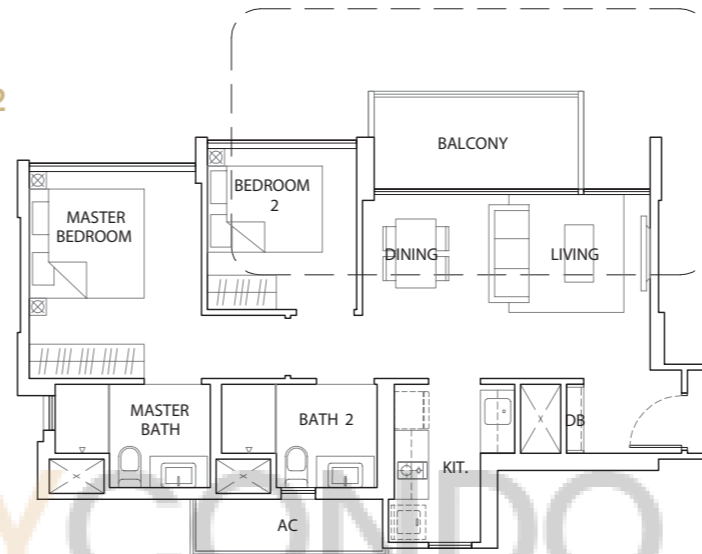
**TYPE A2-T**

**71 sq m / 764 sq ft**  
#15 - 01

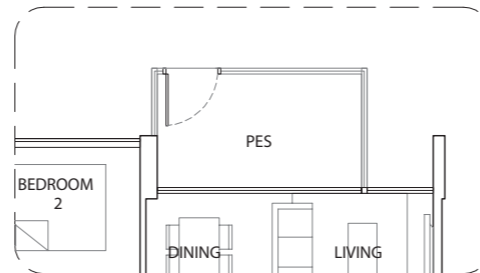
**Mirror Unit**

#15 - 18

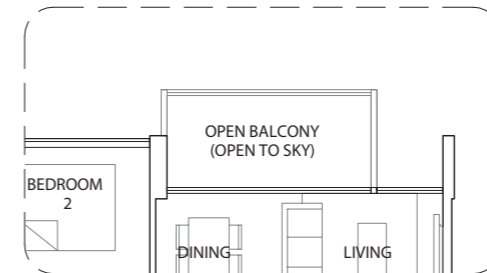
**TYPE A2**



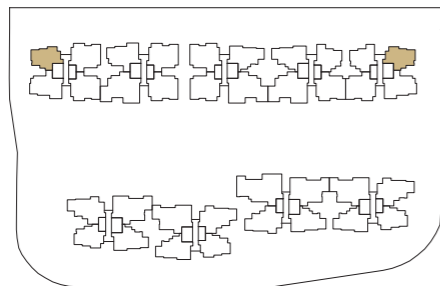
**TYPE A2-P**



**TYPE A2-T**

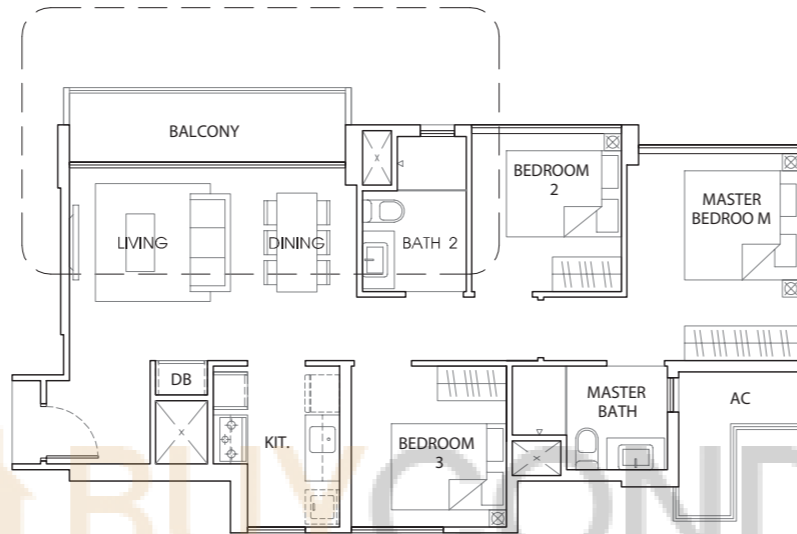


**KEY PLAN**



Area includes A/C ledge, balcony, PES, roof terrace and void (where applicable). Orientation and facings will differ depending on the unit you are purchasing (please refer to the key plan). All plans are not to scale and subject to changes as may be required by relevant authorities. All floor areas are estimated and subjected to final survey.

**TYPE B1**



**TYPE B1**

**84 sq m / 904 sq ft**

#02 - 10 to #14 - 10

#02 - 24 to #14 - 24

#02 - 32 to #14 - 32

**Mirror Unit**

#02 - 13 to #14 - 13

#02 - 27 to #14 - 27

#02 - 35 to #14 - 35

**TYPE B1-P**

**85 sq m / 915 sq ft**

#01 - 10, #01 - 24

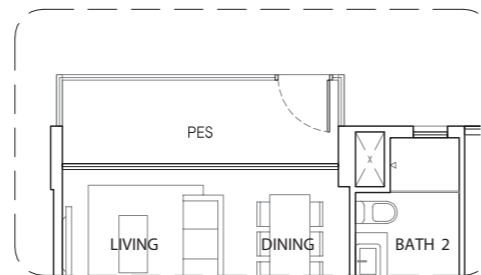
#01 - 32

**Mirror Unit**

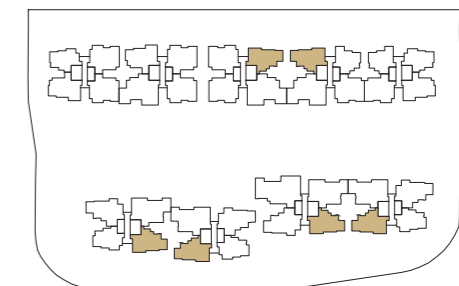
#01 - 13, #01 - 27,

#01 - 35

**TYPE B1-P**



**KEY PLAN**



Area includes A/C ledge, balcony, PES, roof terrace and void (where applicable). Orientation and facings will differ depending on the unit you are purchasing (please refer to the key plan). All plans are not to scale and subject to changes as may be required by relevant authorities. All floor areas are estimated and subjected to final survey.

**TYPE B2**

**85 sq m / 915 sq ft**

#02 - 04 to #14 - 04

**Mirror Unit**

#02 - 19 to #14 - 19

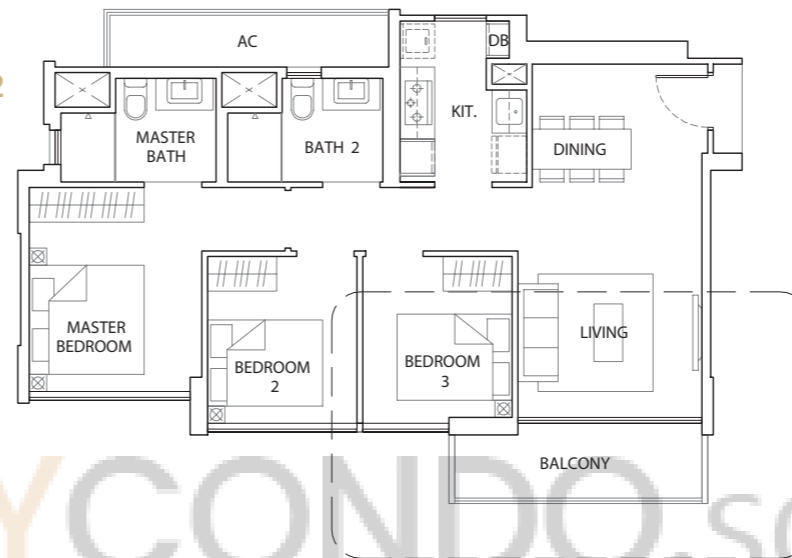
**TYPE B2-T**

**85 sq m / 915 sq ft**

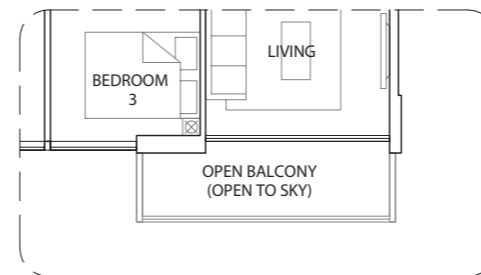
**Mirror Unit**

#15 - 19

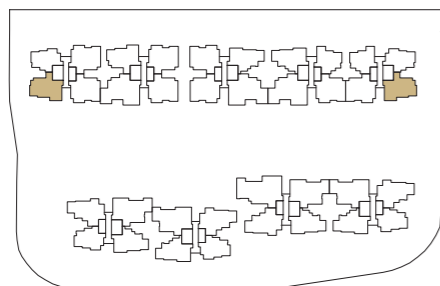
**TYPE B2**



**TYPE B2-T**



**KEY PLAN**



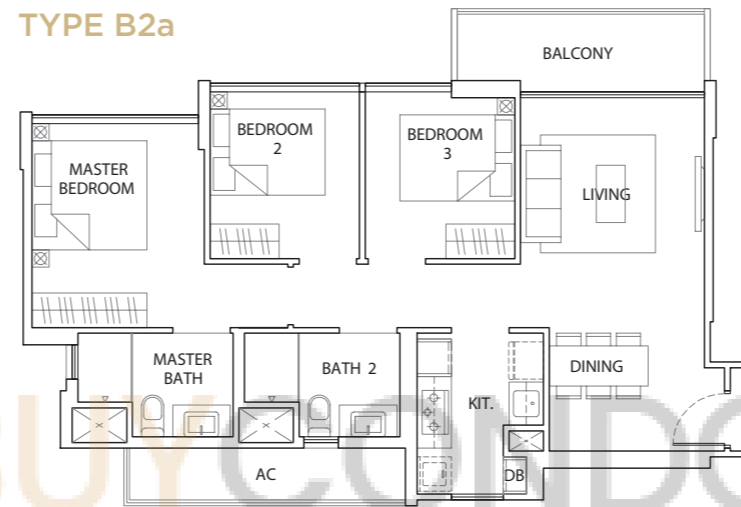
Area includes A/C ledge, balcony, PES, roof terrace and void (where applicable). Orientation and facings will differ depending on the unit you are purchasing (please refer to the key plan). All plans are not to scale and subject to changes as may be required by relevant authorities. All floor areas are estimated and subjected to final survey.

**TYPE B2a**

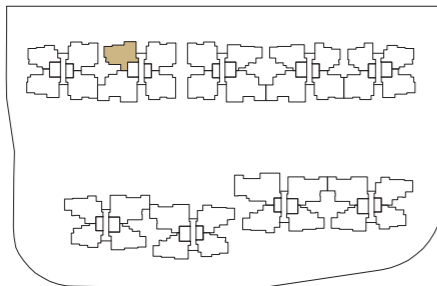
**85 sq m / 915 sq ft**

#02 - 05 to #14 - 05

**TYPE B2a**

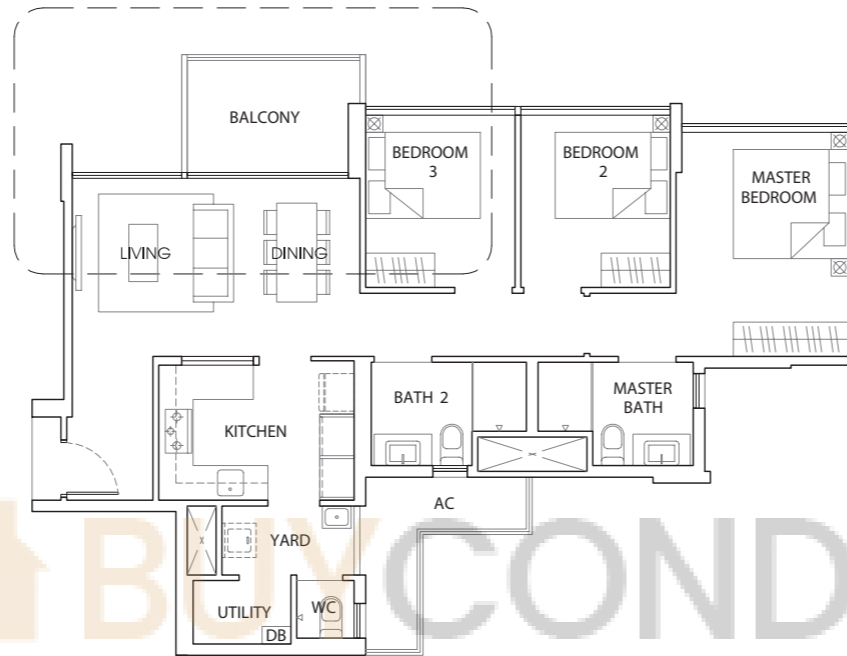


**N**  
 **KEY PLAN**



Area includes A/C ledge, balcony, PES, roof terrace and void (where applicable). Orientation and facings will differ depending on the unit you are purchasing (please refer to the key plan). All plans are not to scale and subject to changes as may be required by relevant authorities. All floor areas are estimated and subjected to final survey.

**TYPE B3**



**TYPE B3**

**97 sq m / 1044 sq ft**

#02 - 22 to #14 - 22

#02 - 28 to #14 - 28

#02 - 30 to #14 - 30

**Mirror Unit**

#02 - 33 to #14 - 33

**TYPE B3-P**

**98 sq m / 1055 sq ft**

#01 - 28

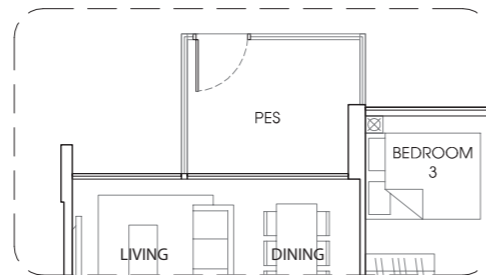
**TYPE B3-T**

**97 sq m / 1044 sq ft**

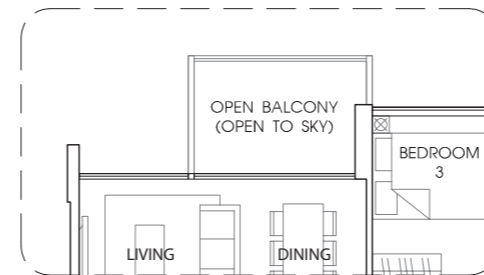
#15 - 22, #15 - 28

#15 - 30

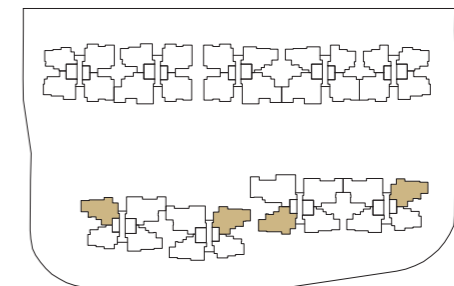
**TYPE B3-P**



**TYPE B3 -T**



**KEY PLAN**



Area includes A/C ledge, balcony, PES, roof terrace and void (where applicable). Orientation and facings will differ depending on the unit you are purchasing (please refer to the key plan). All plans are not to scale and subject to changes as may be required by relevant authorities. All floor areas are estimated and subjected to final survey.

**TYPE B3a**

**96 sq m / 1033 sq ft**

#02 - 03 to #14 - 03

#02 - 07 to #14 - 07

#02 - 15 to #14 - 15

**Mirror Unit**

#02 - 12 to #14 - 12

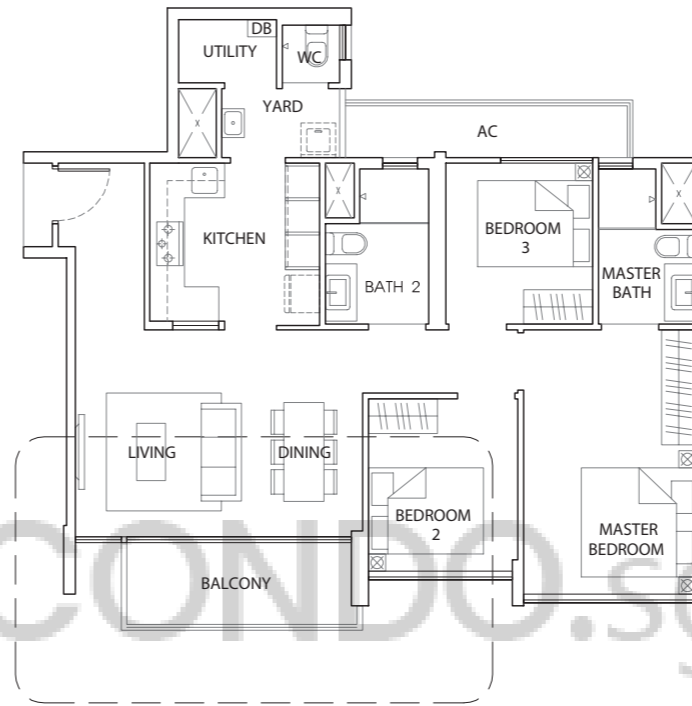
#02 - 20 to #14 - 20

**TYPE B3a-P**

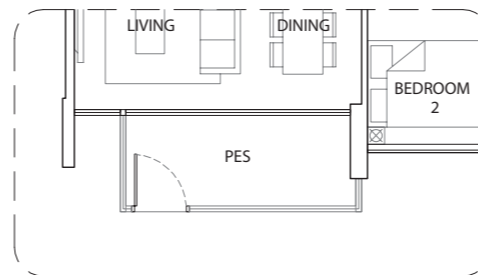
**97 sq m / 1044 sq ft**

#01 - 03

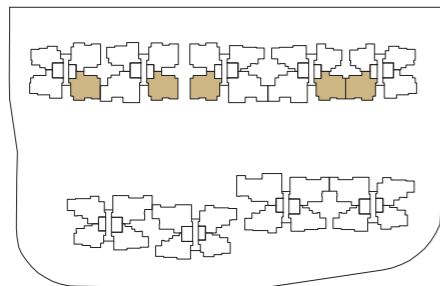
**TYPE B3a**



**TYPE B3a-P**



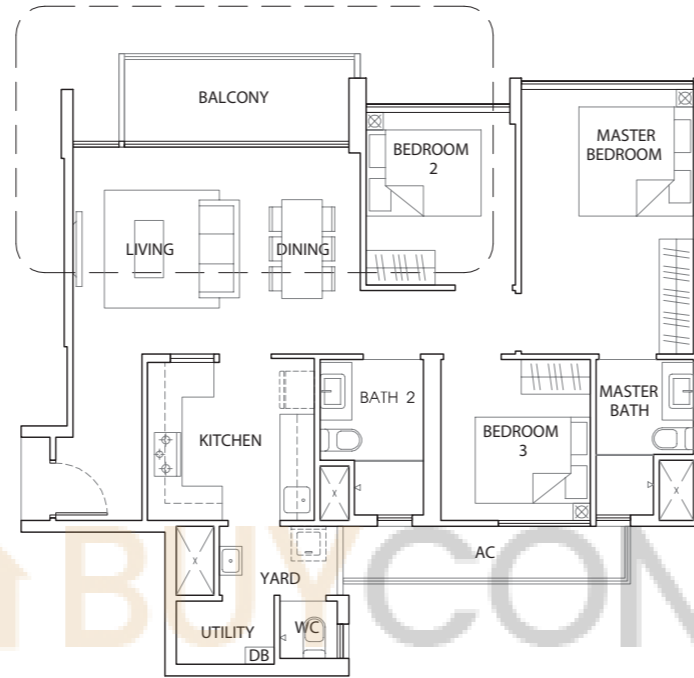
**KEY PLAN**



Area includes A/C ledge, balcony, PES, roof terrace and void (where applicable). Orientation and facings will differ depending on the unit you are purchasing (please refer to the key plan). All plans are not to scale and subject to changes as may be required by relevant authorities. All floor areas are estimated and subjected to final survey.



**TYPE B3b**



**TYPE B3b**

**96 sq m / 1033 sq ft**  
#02 - 02 to #14 - 02  
#02 - 06 to #14 - 06

**Mirror Unit**  
#02 - 09 to #14 - 09

**TYPE B3b-P**

**97 sq m / 1044 sq ft**  
#01 - 06

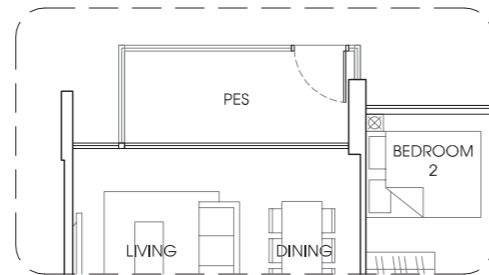
**Mirror Unit**  
#01 - 09

**TYPE B3b-T**

**96 sq m / 1033 sq ft**  
#15 - 06

**Mirror Unit**  
#15 - 09

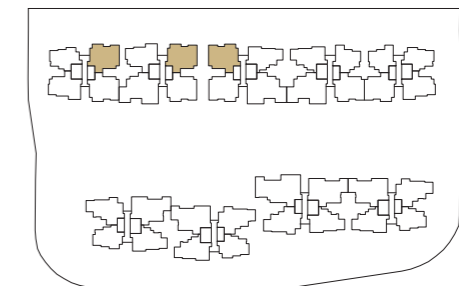
**TYPE B3b-P**



**TYPE B3b -T**



**KEY PLAN**



Area includes A/C ledge, balcony, PES, roof terrace and void (where applicable). Orientation and facings will differ depending on the unit you are purchasing (please refer to the key plan). All plans are not to scale and subject to changes as may be required by relevant authorities. All floor areas are estimated and subjected to final survey.

### TYPE C1

118 sq m / 1270 sq ft

#02 - 21 to #14 - 21

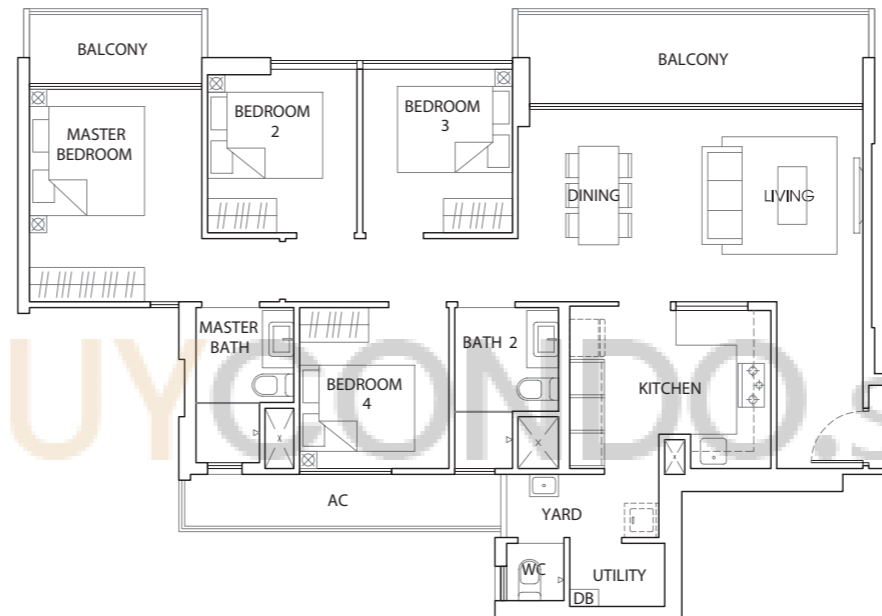
#02 - 29 to #14 - 29

### Mirror Unit

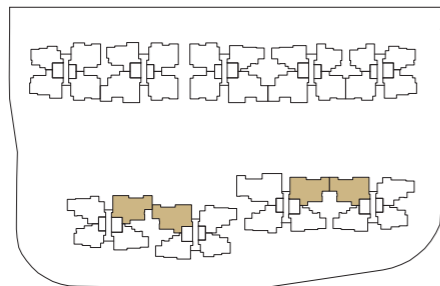
#02 - 26 to #14 - 26

#02 - 34 to #14 - 34

### TYPE C1

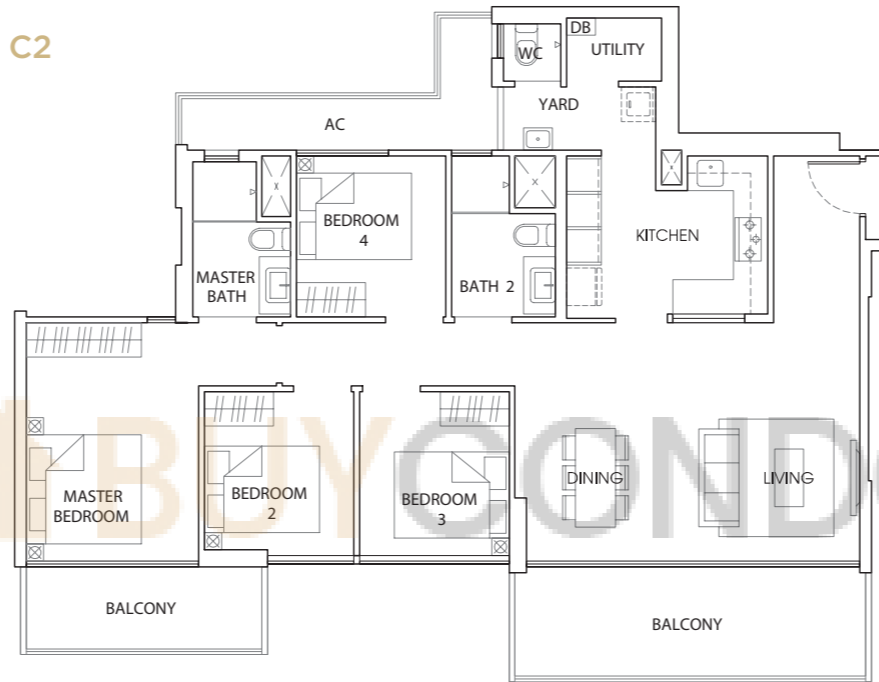


### KEY PLAN



Area includes A/C ledge, balcony, PES, roof terrace and void (where applicable). Orientation and facings will differ depending on the unit you are purchasing (please refer to the key plan). All plans are not to scale and subject to changes as may be required by relevant authorities. All floor areas are estimated and subjected to final survey.

**TYPE C2**



**TYPE C2**

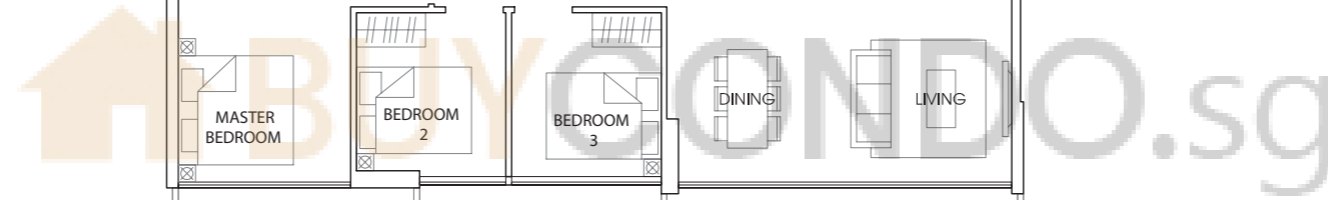
**131 sq m / 1410sq ft**

#02 - 08 to #14 - 08

#02 - 16 to #14 - 16

**Mirror Unit**

#02 - 11 to #14 - 11



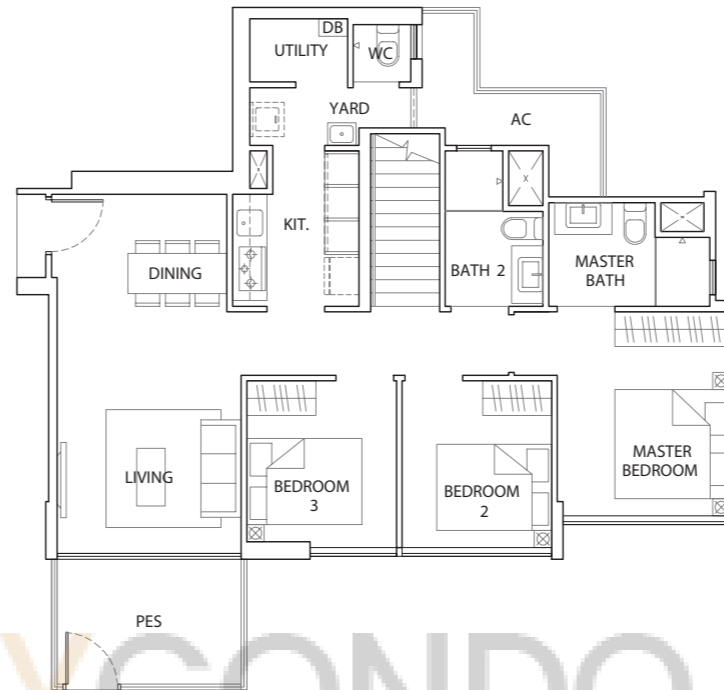
**N**  
  
**KEY PLAN**



Area includes A/C ledge, balcony, PES, roof terrace and void (where applicable). Orientation and facings will differ depending on the unit you are purchasing (please refer to the key plan). All plans are not to scale and subject to changes as may be required by relevant authorities. All floor areas are estimated and subjected to final survey.

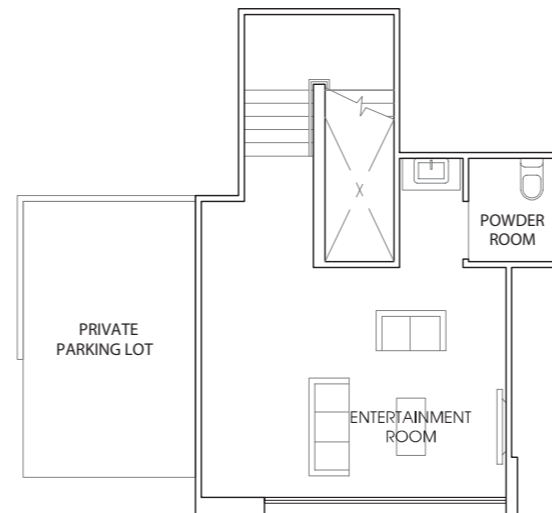
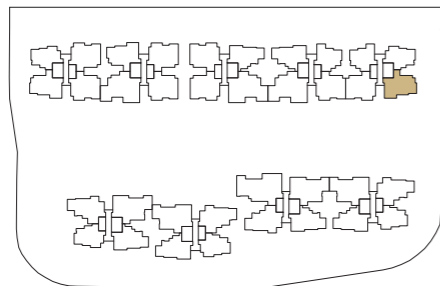
**TYPE C3-P**  
153 sq m / 1647 sq ft  
#01 - 19

**TYPE C3-P**



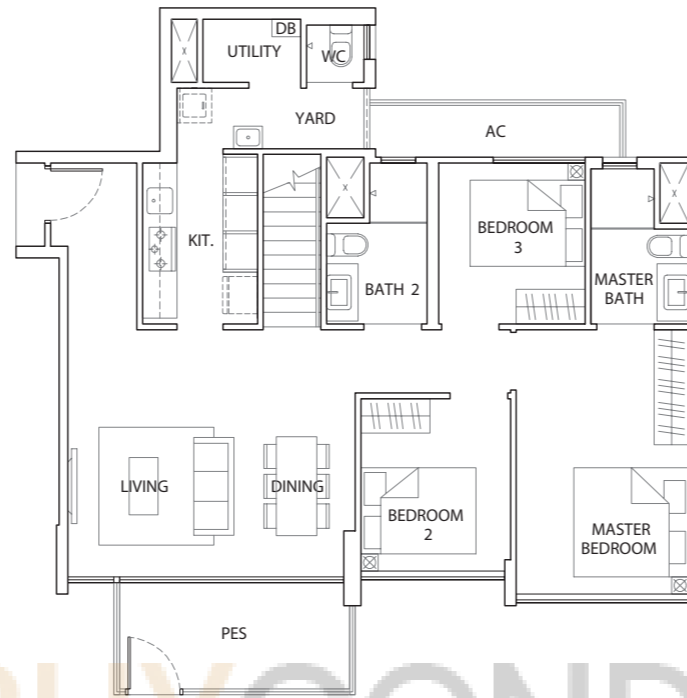
BUY CONDO.sg

N  
KEY PLAN



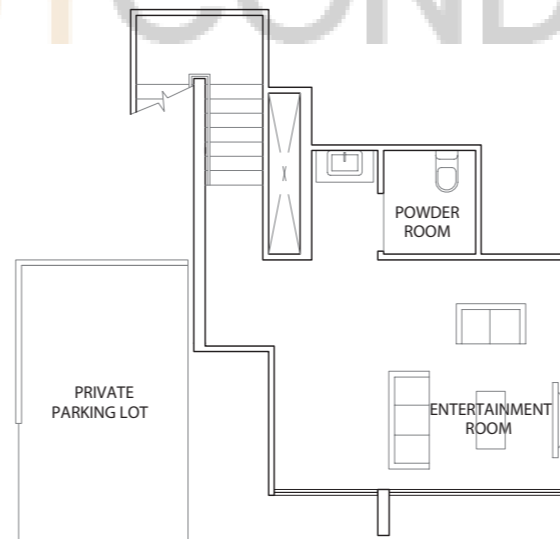
Area includes A/C ledge, balcony, PES, roof terrace and void (where applicable). Orientation and facings will differ depending on the unit you are purchasing (please refer to the key plan). All plans are not to scale and subject to changes as may be required by relevant authorities. All floor areas are estimated and subjected to final survey.

**TYPE C4-P**

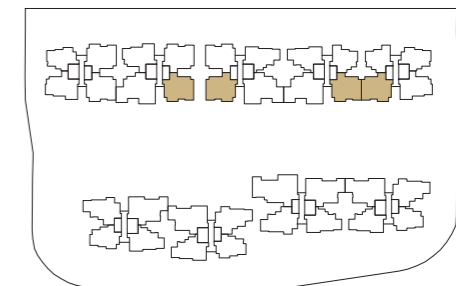


**TYPE C4-P**  
**156 sq m / 1679 sq ft**  
#01 - 07, #01 - 15

**Mirror Unit**  
#01 - 12, #01 - 20



**N**  
**KEY PLAN**



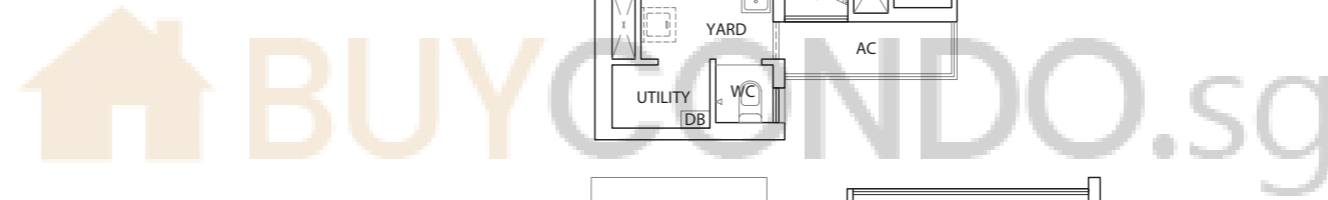
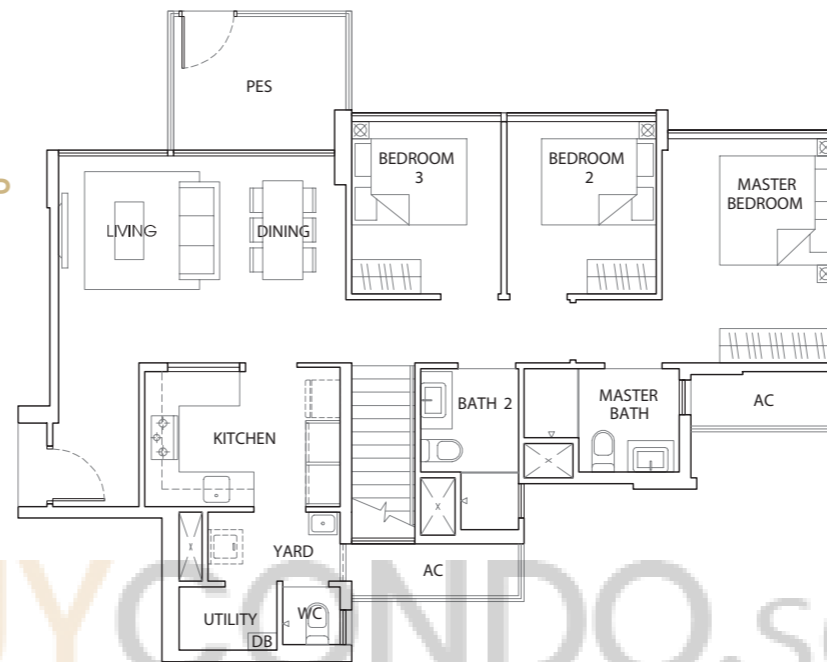
Area includes A/C ledge, balcony, PES, roof terrace and void (where applicable). Orientation and facings will differ depending on the unit you are purchasing (please refer to the key plan). All plans are not to scale and subject to changes as may be required by relevant authorities. All floor areas are estimated and subjected to final survey.

**TYPE C5-P**

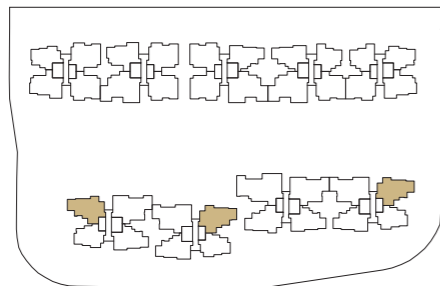
**155 sq m / 1668 sq ft**  
#01 - 22, #01 - 30

**Mirror Unit**  
#01 - 33

**TYPE C5-P**

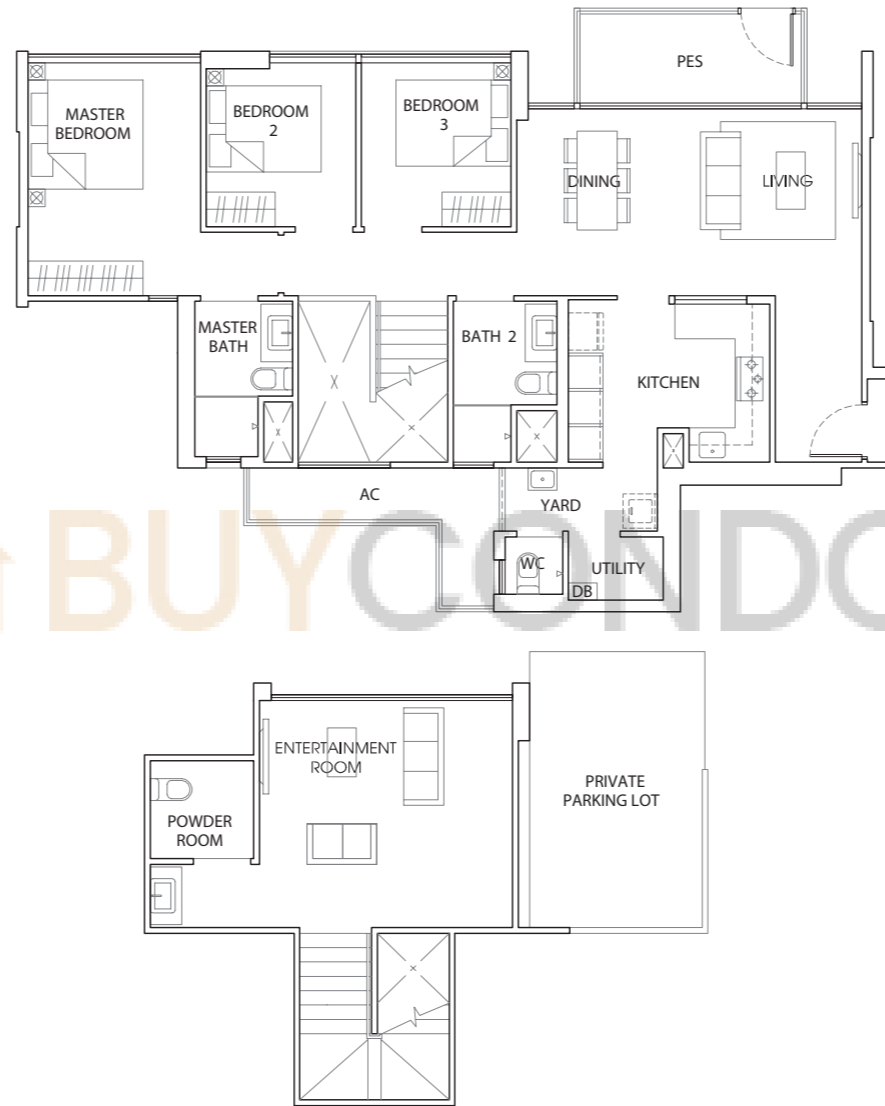


**N**  
**KEY PLAN**



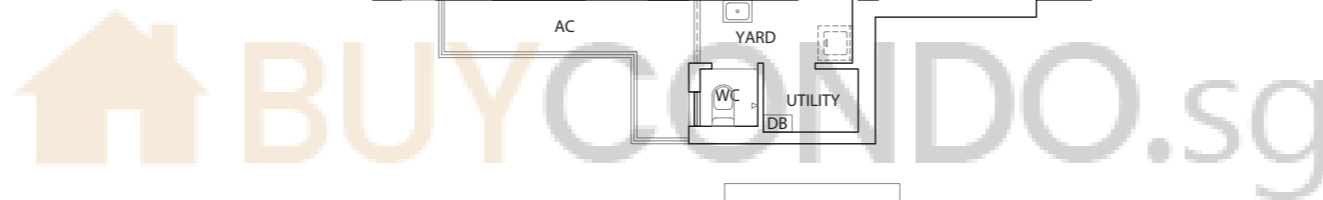
Area includes A/C ledge, balcony, PES, roof terrace and void (where applicable). Orientation and facings will differ depending on the unit you are purchasing (please refer to the key plan). All plans are not to scale and subject to changes as may be required by relevant authorities. All floor areas are estimated and subjected to final survey.

**TYPE C6-P**



**TYPE C6-P**  
**159 sq m / 1712 sq ft**  
#01 - 21, #01 - 29

**Mirror Unit**  
#01 - 26, #01 - 34



N  
KEY PLAN



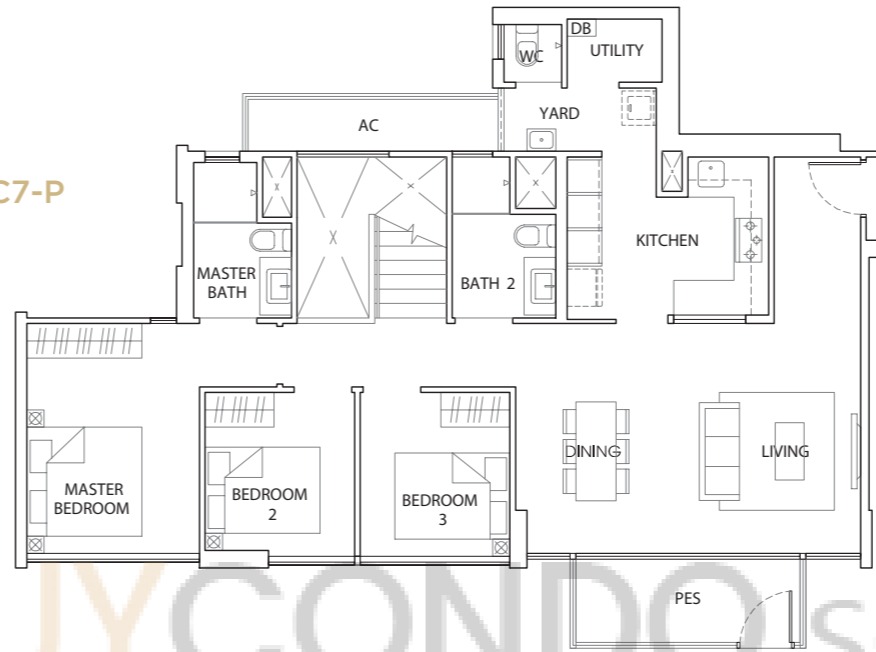
Area includes A/C ledge, balcony, PES, roof terrace and void (where applicable). Orientation and facings will differ depending on the unit you are purchasing (please refer to the key plan). All plans are not to scale and subject to changes as may be required by relevant authorities. All floor areas are estimated and subjected to final survey.

**TYPE C7-P**

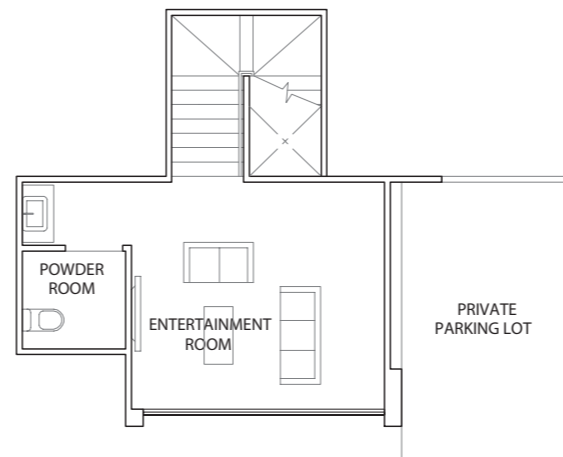
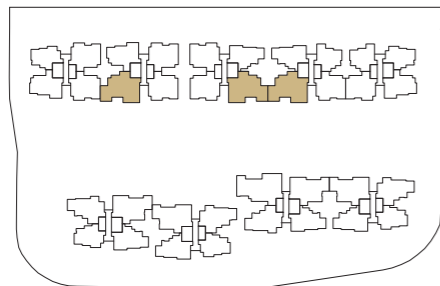
**160 sq m / 1722 sq ft**  
#01 - 08, #01-16

**Mirror Unit**  
#01 - 11

**TYPE C7-P**



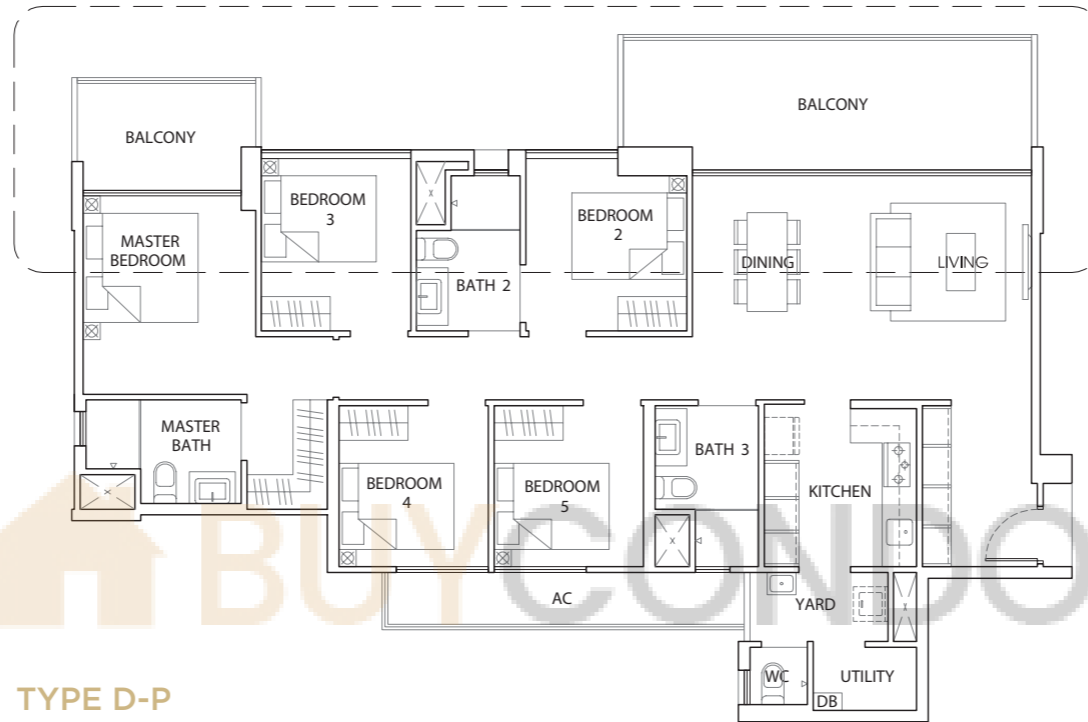
**KEY PLAN**



Area includes A/C ledge, balcony, PES, roof terrace and void (where applicable). Orientation and facings will differ depending on the unit you are purchasing (please refer to the key plan). All plans are not to scale and subject to changes as may be required by relevant authorities. All floor areas are estimated and subjected to final survey.



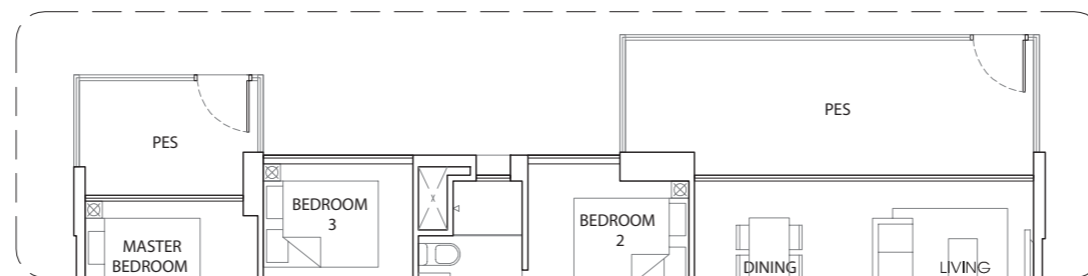
**TYPE D**



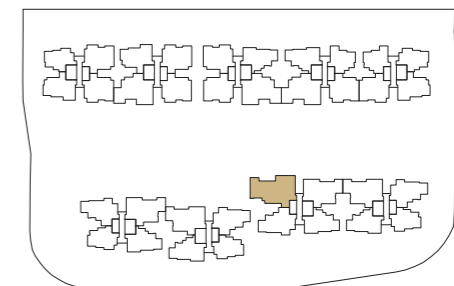
**TYPE D**  
148 sq m / 1593 sq ft  
#02 - 25 to #14 - 25

**TYPE D-P**  
149 sq m / 1604 sq ft  
#01 - 25

**TYPE D-P**



**KEY PLAN**

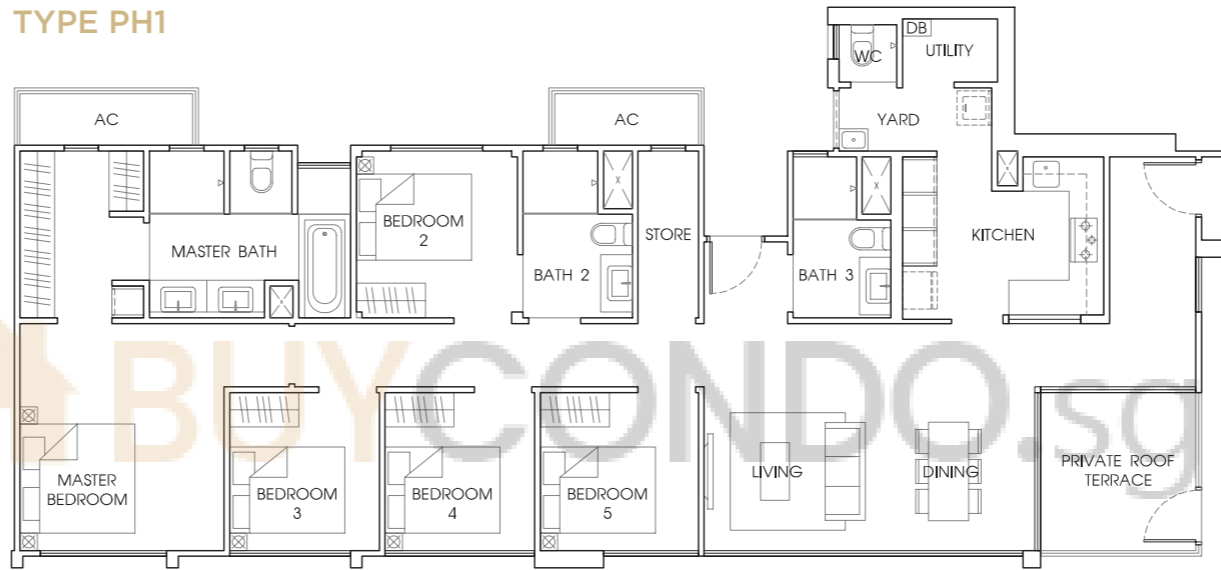


Area includes A/C ledge, balcony, PES, roof terrace and void (where applicable). Orientation and facings will differ depending on the unit you are purchasing (please refer to the key plan). All plans are not to scale and subject to changes as may be required by relevant authorities. All floor areas are estimated and subjected to final survey.

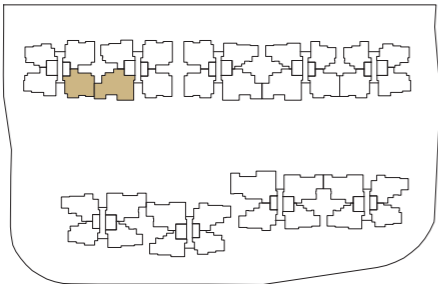
**TYPE PH1**

**155 sq m / 1668 sq ft**  
#15 - 08

**TYPE PH1**



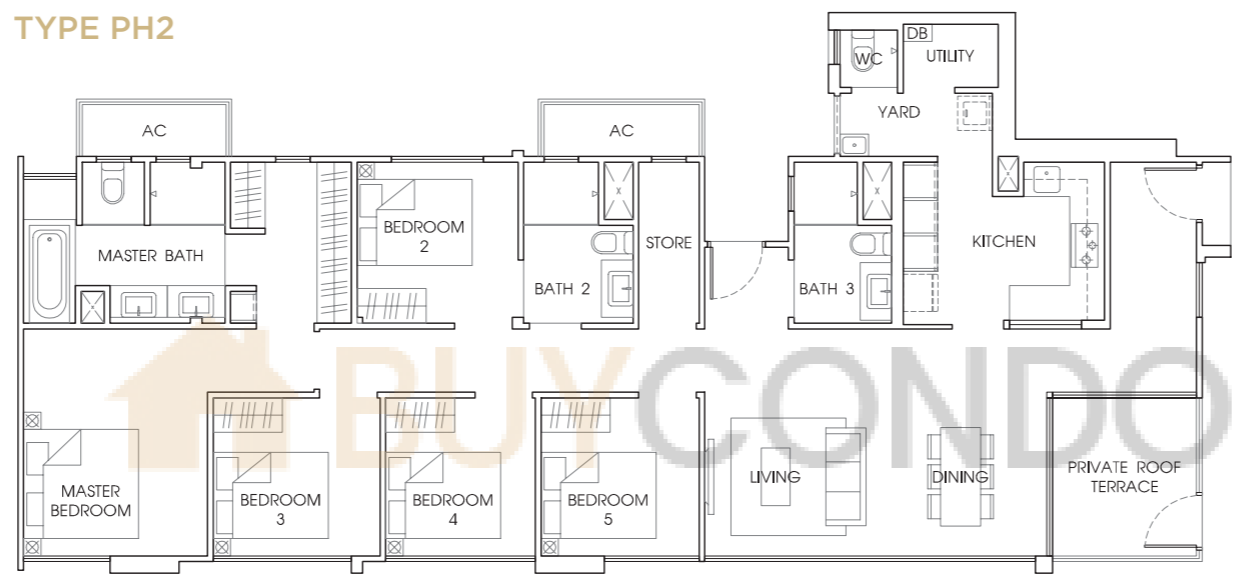
**N**  
 **KEY PLAN**



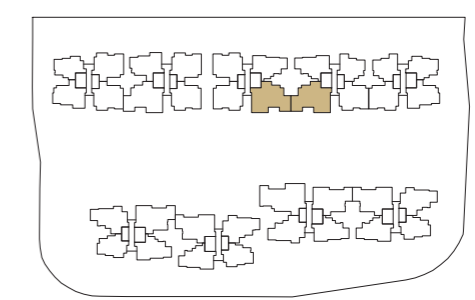
Area includes A/C ledge, balcony, PES, roof terrace and void (where applicable). Orientation and facings will differ depending on the unit you are purchasing (please refer to the key plan). All plans are not to scale and subject to changes as may be required by relevant authorities. All floor areas are estimated and subjected to final survey.

**TYPE PH2**  
**154 sq m / 1658 sq ft**  
#15 - 16

**TYPE PH2**



N  
KEY PLAN

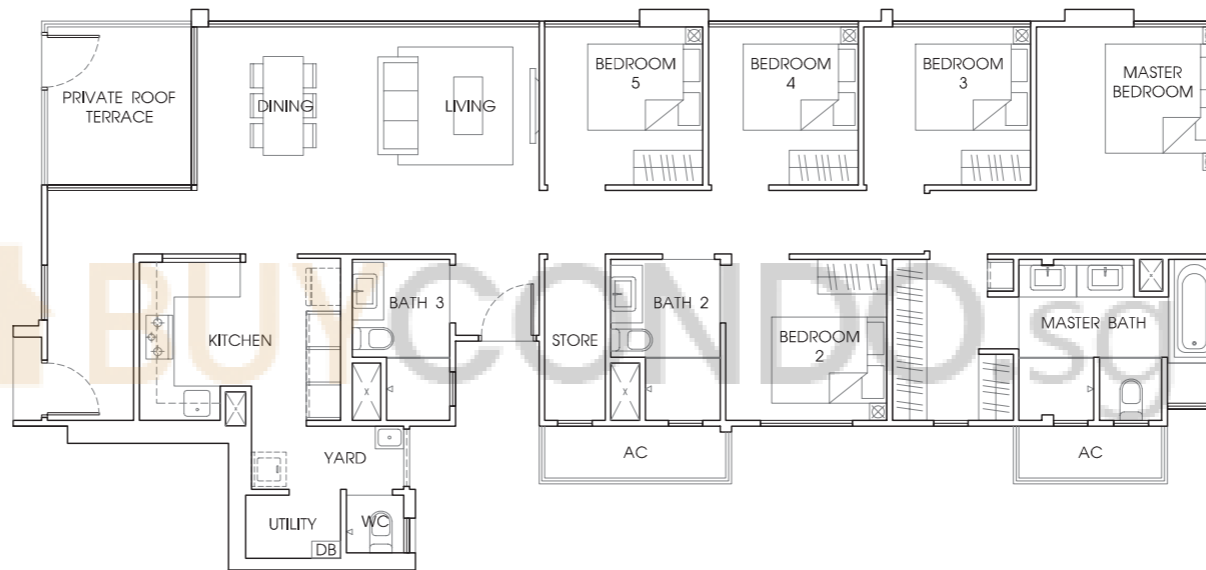


Area includes A/C ledge, balcony, PES, roof terrace and void (where applicable). Orientation and facings will differ depending on the unit you are purchasing (please refer to the key plan). All plans are not to scale and subject to changes as may be required by relevant authorities. All floor areas are estimated and subjected to final survey.

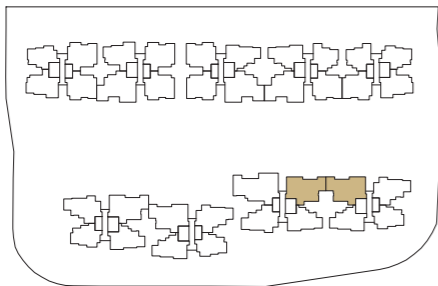
**TYPE PH3**

154 sq m / 1658 sq ft  
#15 - 26

**TYPE PH3**



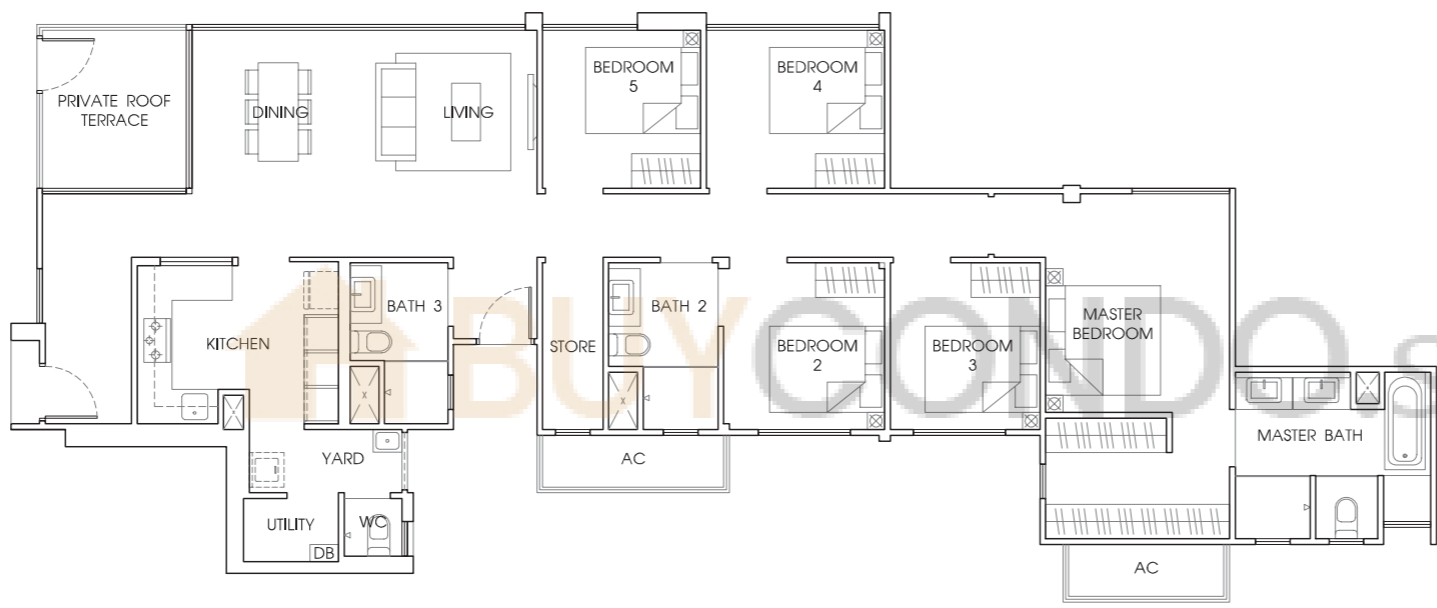
N  
KEY PLAN



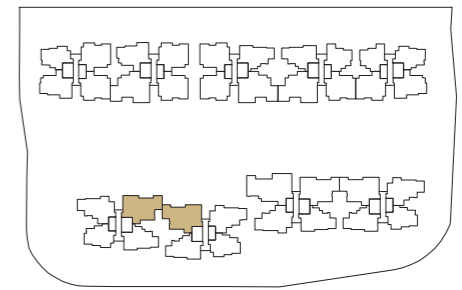
Area includes A/C ledge, balcony, PES, roof terrace and void (where applicable). Orientation and facings will differ depending on the unit you are purchasing (please refer to the key plan). All plans are not to scale and subject to changes as may be required by relevant authorities. All floor areas are estimated and subjected to final survey.

**TYPE PH4**  
157 sq m / 1690 sq ft  
#15 - 34

**TYPE PH4**



**KEY PLAN**



Area includes A/C ledge, balcony, PES, roof terrace and void (where applicable). Orientation and facings will differ depending on the unit you are purchasing (please refer to the key plan). All plans are not to scale and subject to changes as may be required by relevant authorities. All floor areas are estimated and subjected to final survey.