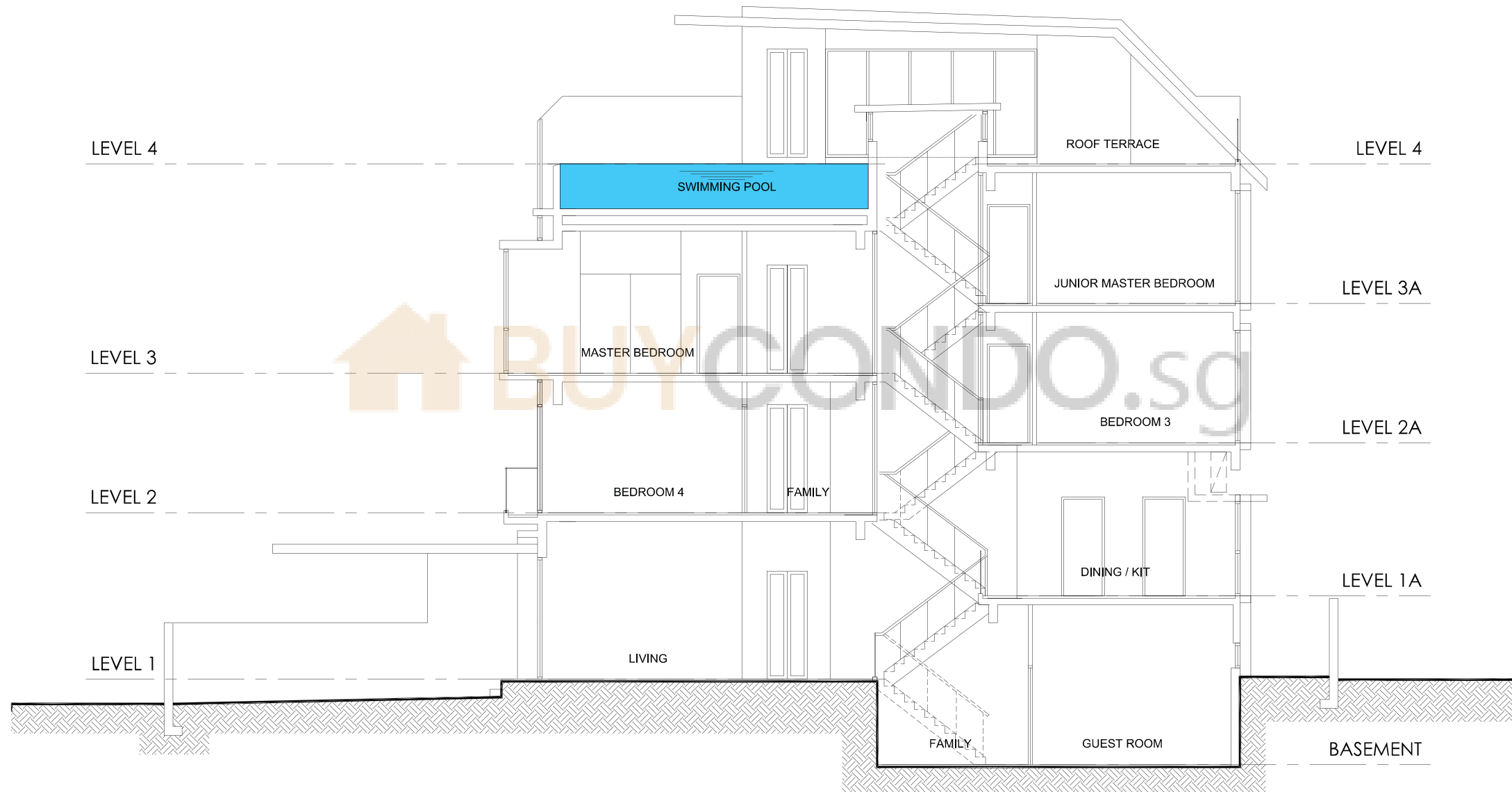
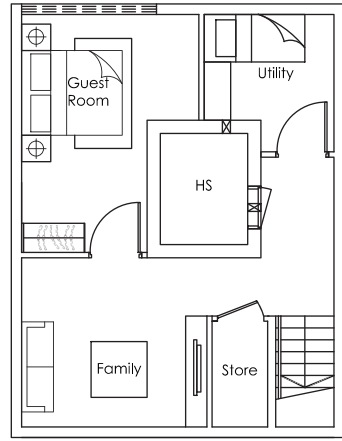
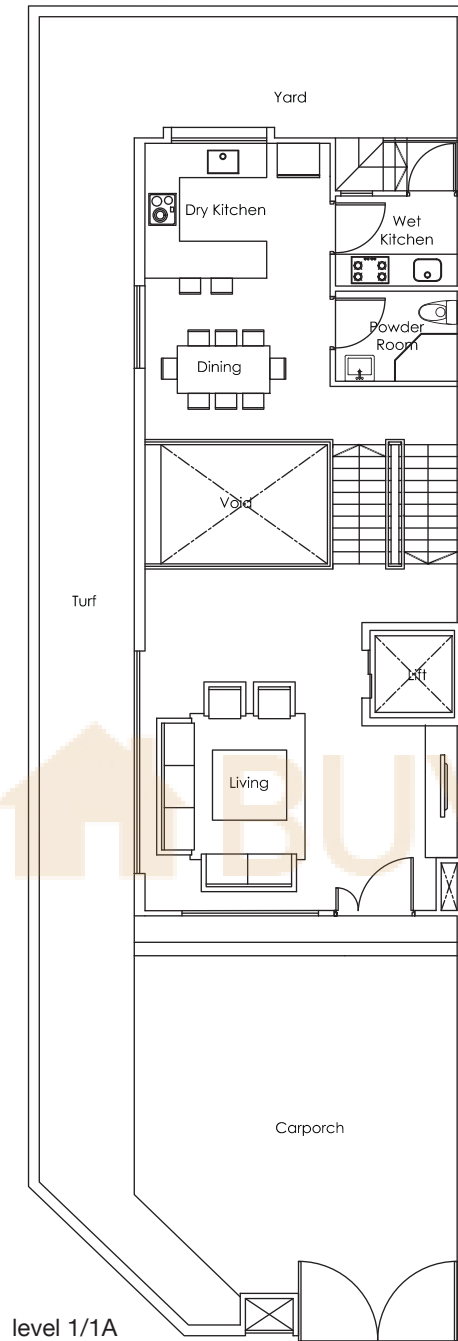


Section Plan

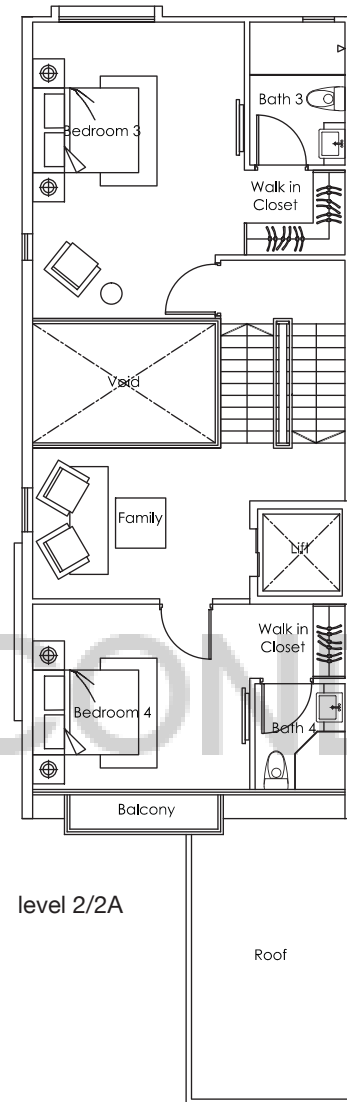




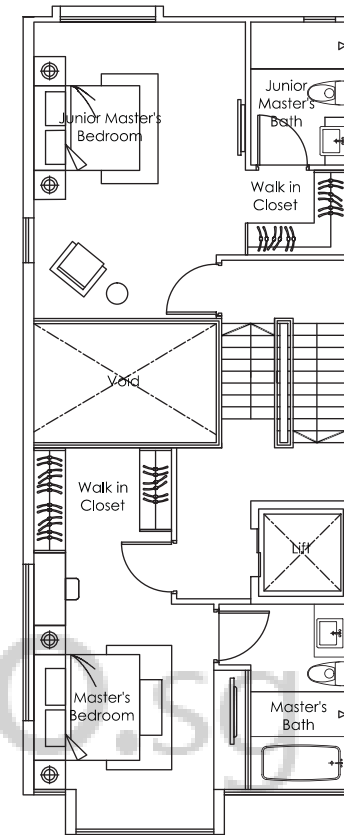
basement



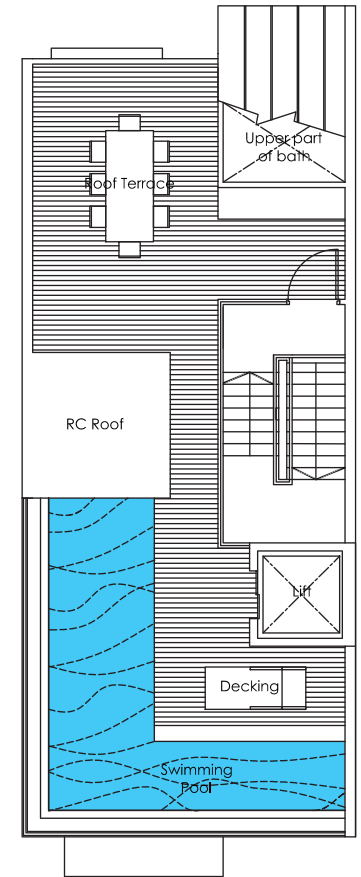
level 1/1A



level 2/2A



level 3/3A



level 4



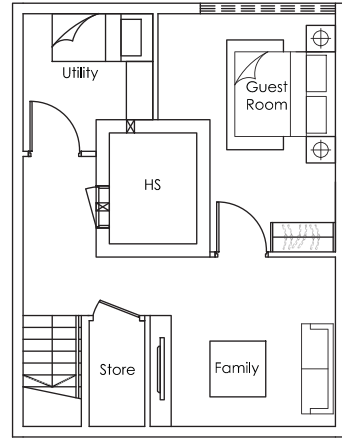
51	53	55	57	59	61
----	----	----	----	----	----

House No. 51 Inggu Road

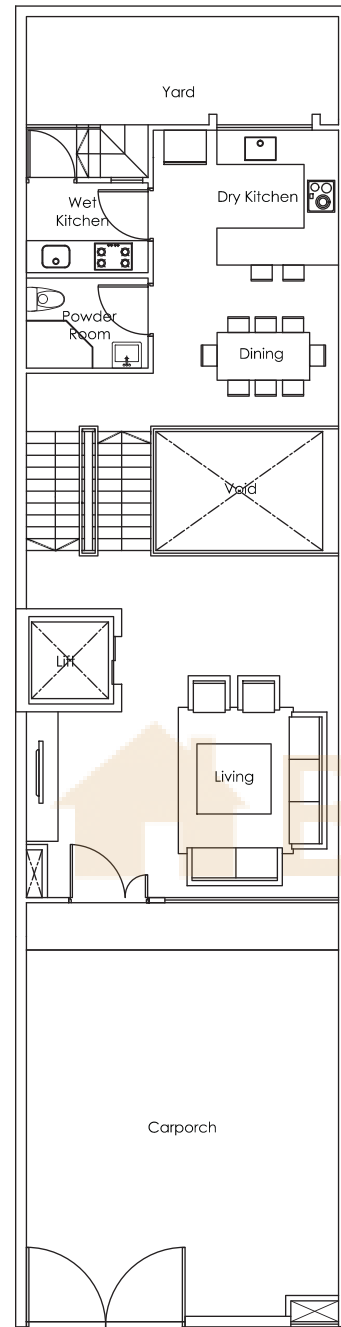
5 + 1 bdrm

Land Area: approx. 202.8 sq m • 2183 sq ft

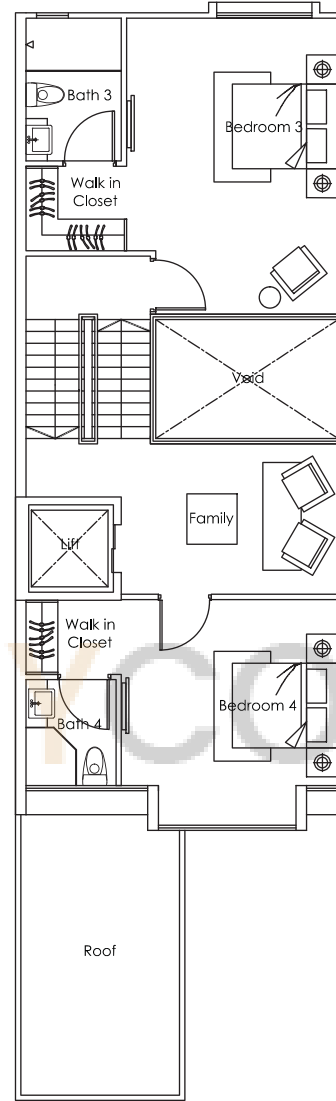
All plans are subject to amendments as approved by the relevant authorities. Site Area is subject to final survey. Plans are not drawn to scale.



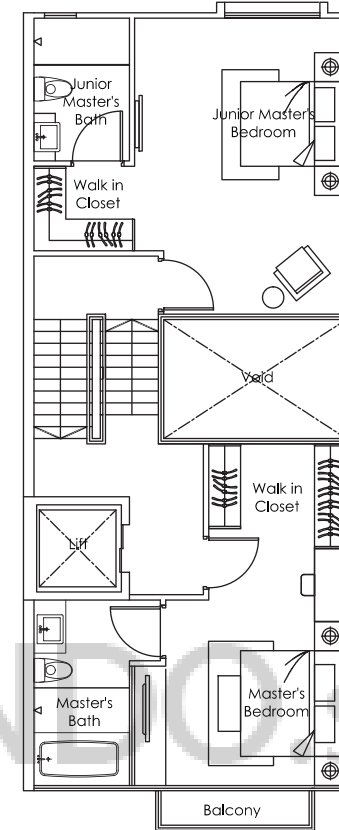
basement



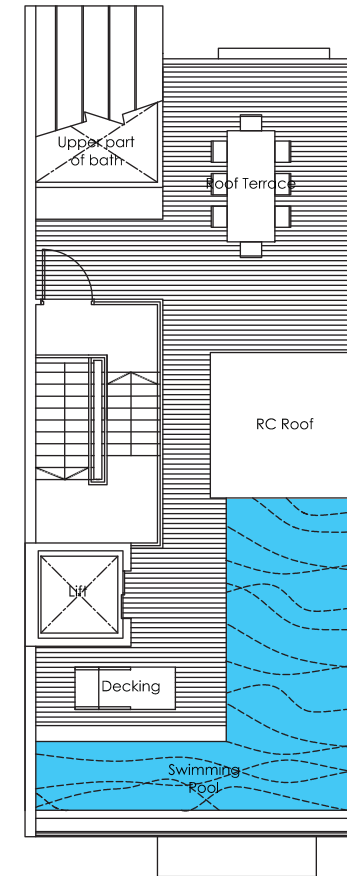
level 1/1A



level 2/2A



level 3/3A

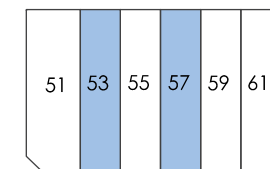


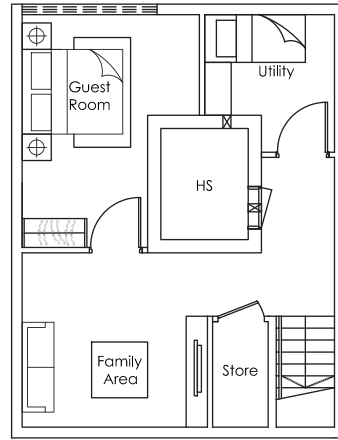
level 4

Houses No. 53 & 57 Inngu Road
5 + 1 bdrm

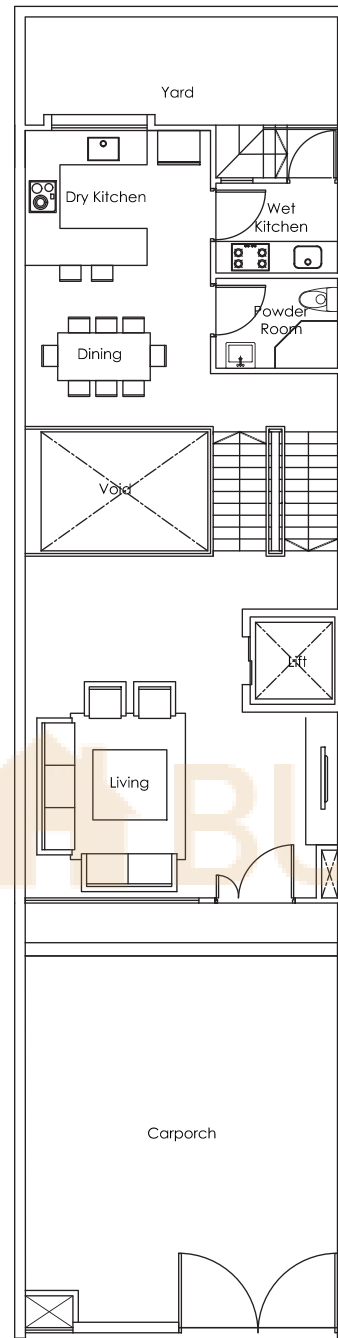
Land Area: approx. 153.8 sq m • 1656 sq ft

All plans are subject to amendments as approved by the relevant authorities. Site Area is subject to final survey. Plans are not drawn to scale.

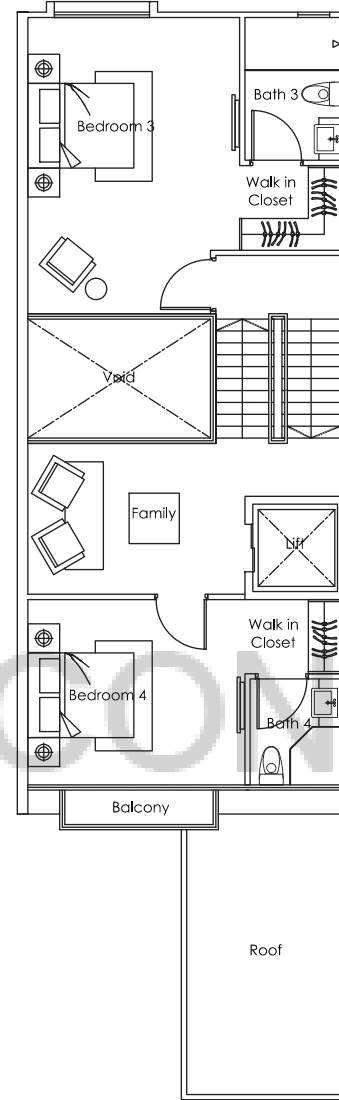




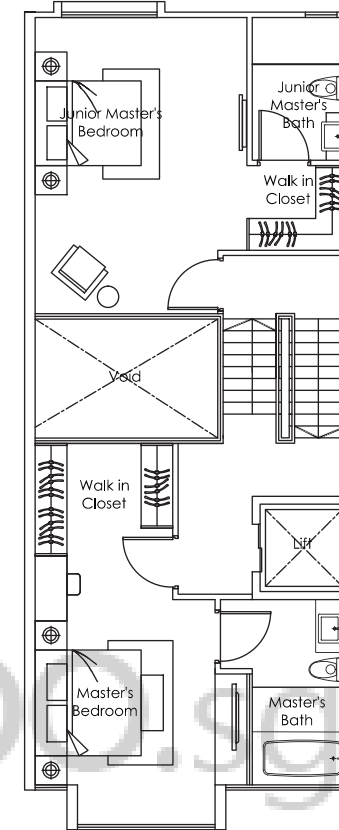
basement



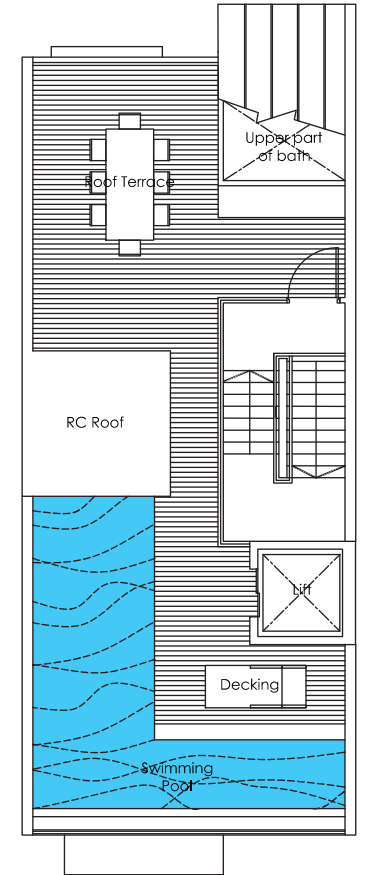
level 1/1A



level 2/2A



level 3/3A



level 4



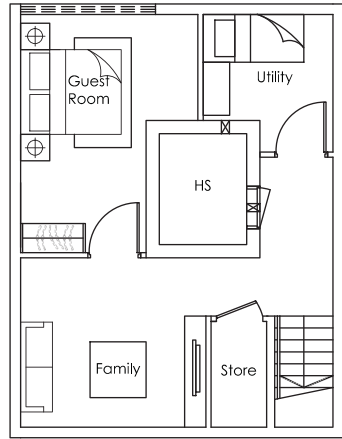
51	53	55	57	59	61
----	----	----	----	----	----

House No. 55 Inggu Road

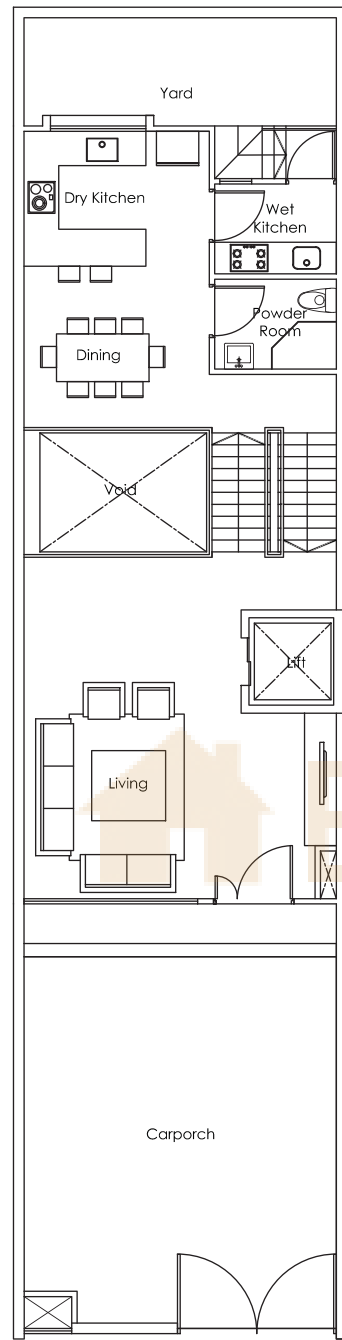
5 + 1 bdrm

Land Area: approx. 153.8 sq m • 1656 sq ft

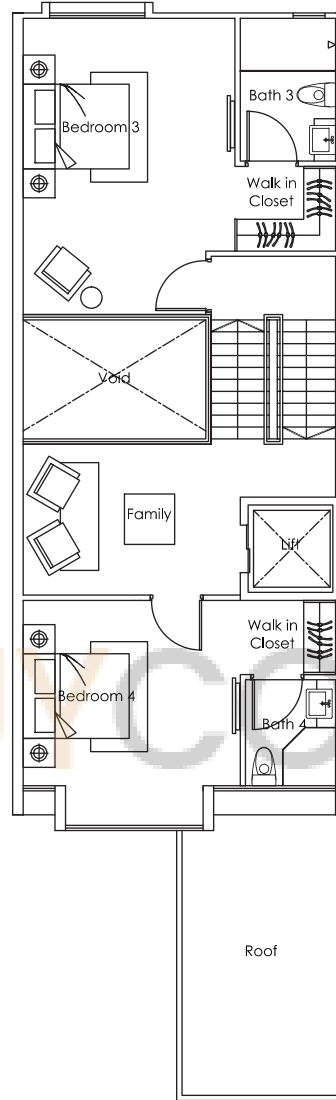
All plans are subject to amendments as approved by the relevant authorities. Site Area is subject to final survey. Plans are not drawn to scale.



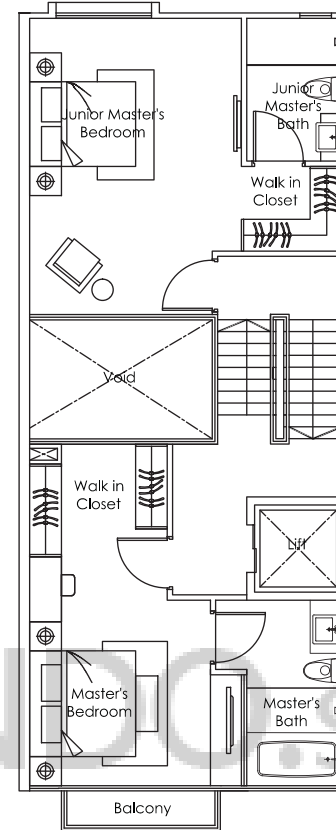
basement



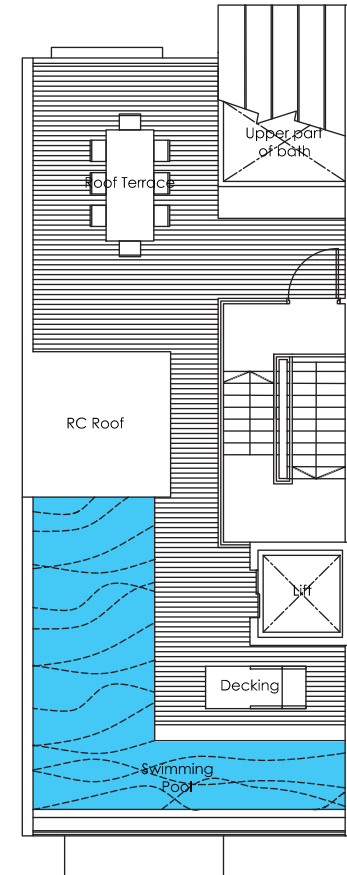
level 1/1A



level 2/2A



level 3/3A



level 4

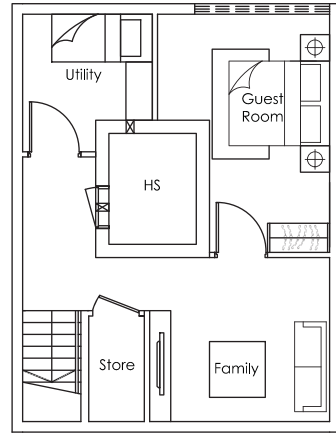
House No. 59 Inngu Road
5 + 1 bdrm

Land Area: approx. 153.8 sq m • 1656 sq ft

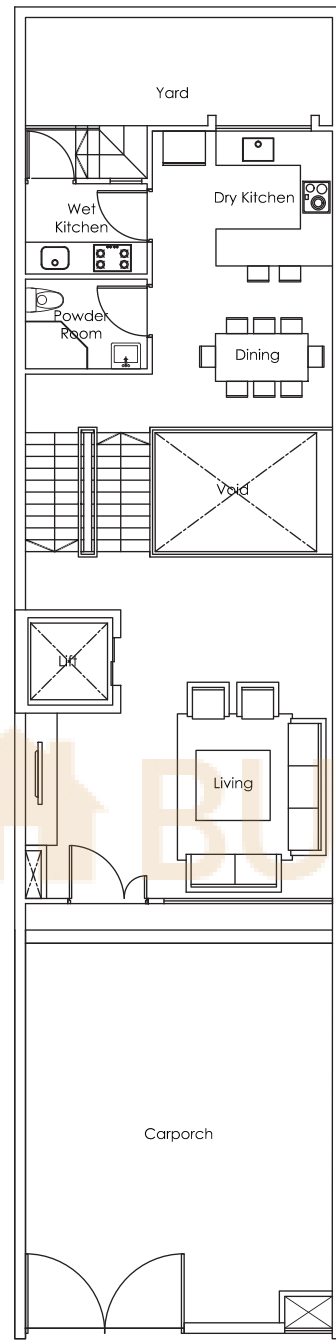
All plans are subject to amendments as approved by the relevant authorities. Site Area is subject to final survey. Plans are not drawn to scale.



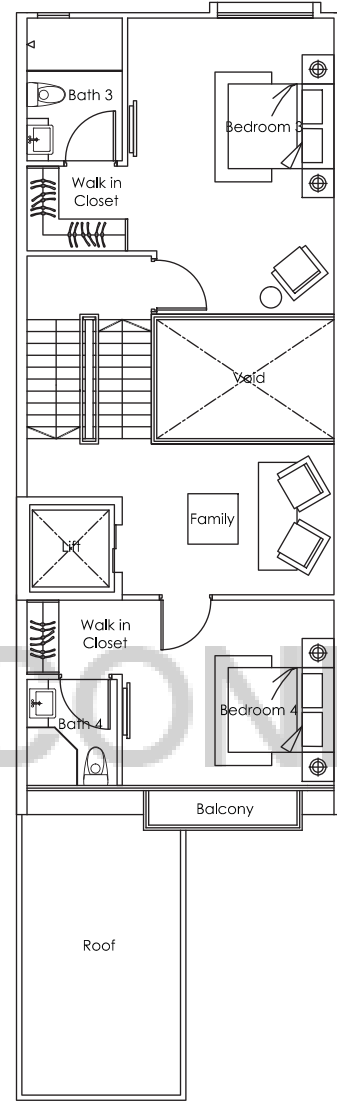
51	53	55	57	59	61
----	----	----	----	----	----



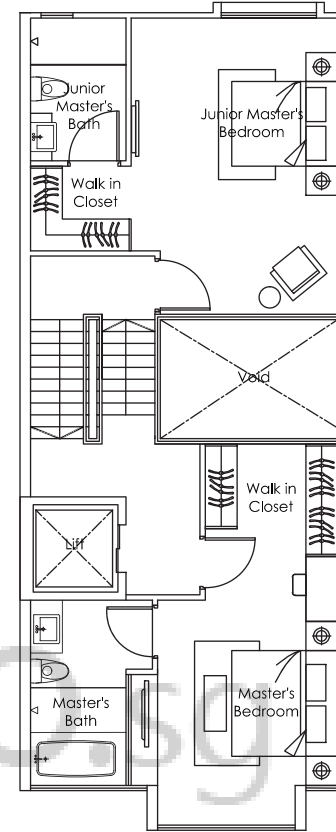
basement



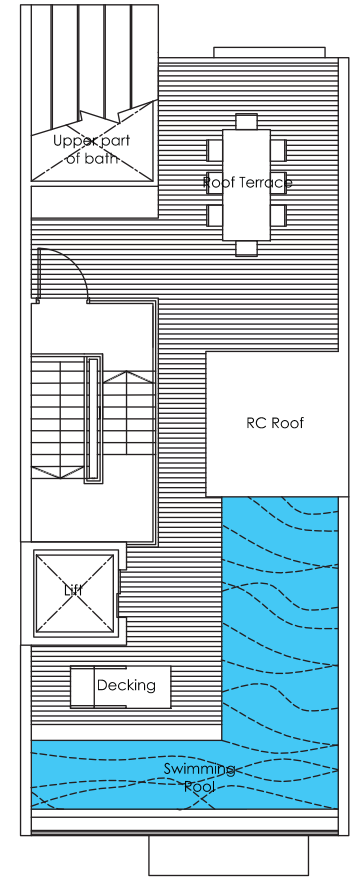
level 1/1A



level 2/2A



level 3/3A



level 4



51	53	55	57	59	61
----	----	----	----	----	----

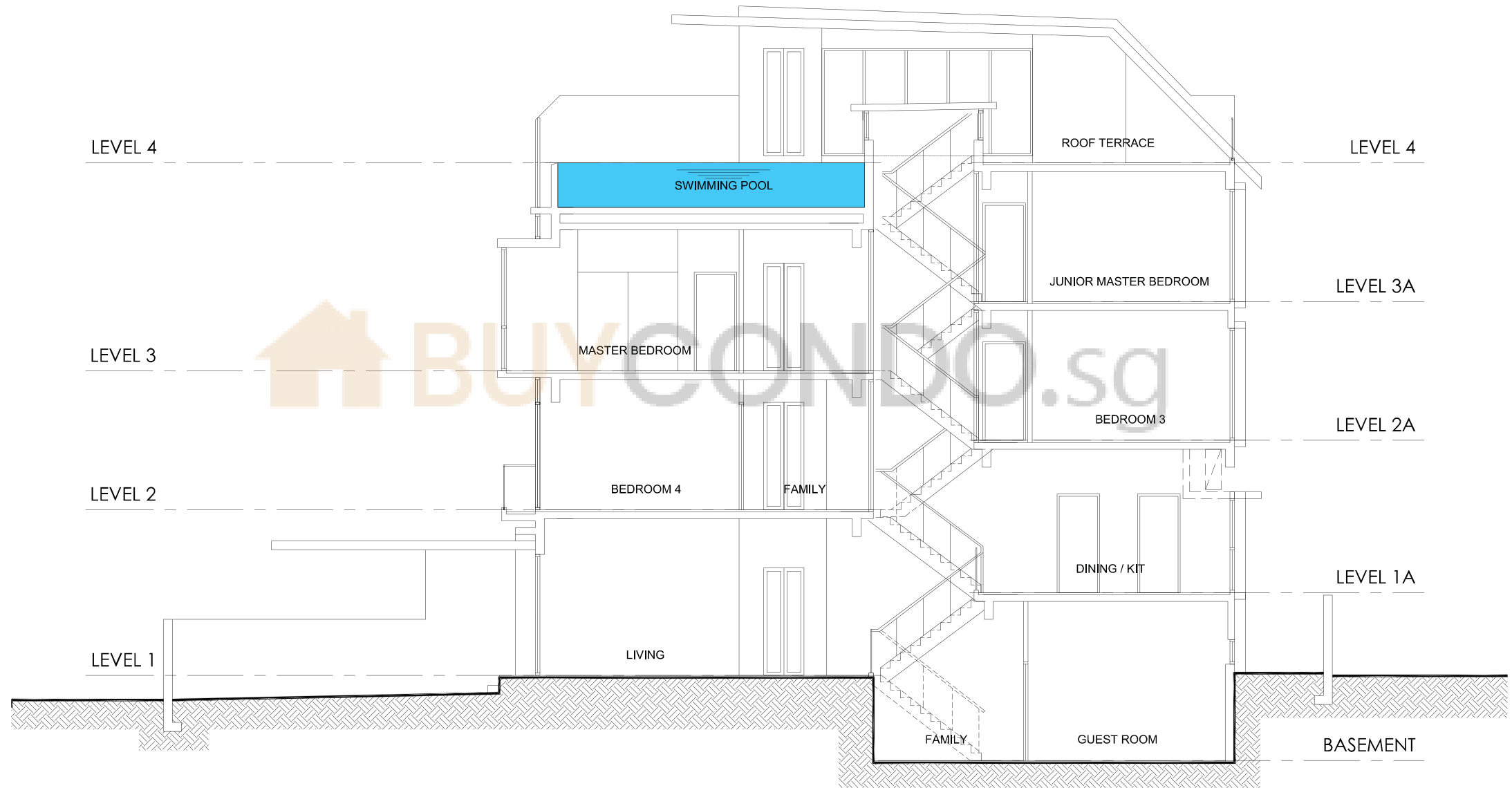
House No. 61 Ingu Road

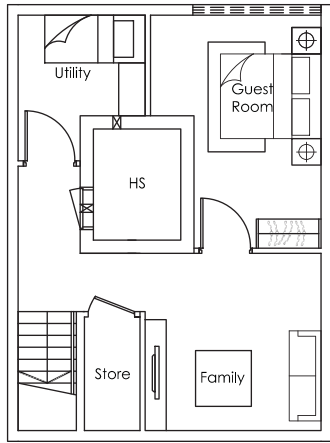
5 + 1 bdrm

Land Area: approx. 154.2 sq m • 1660 sq ft

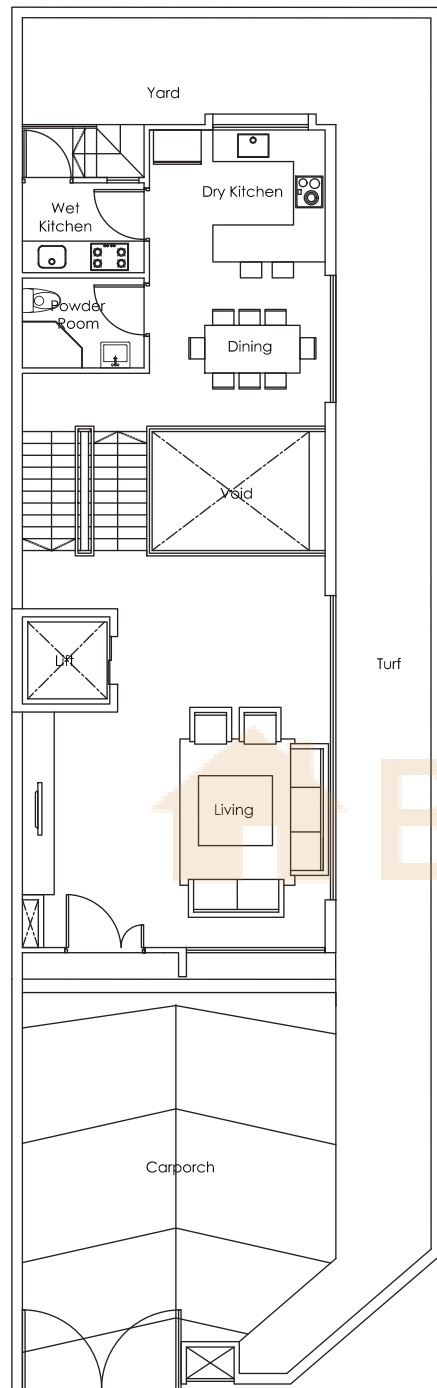
All plans are subject to amendments as approved by the relevant authorities. Site Area is subject to final survey. Plans are not drawn to scale.

Section Plan

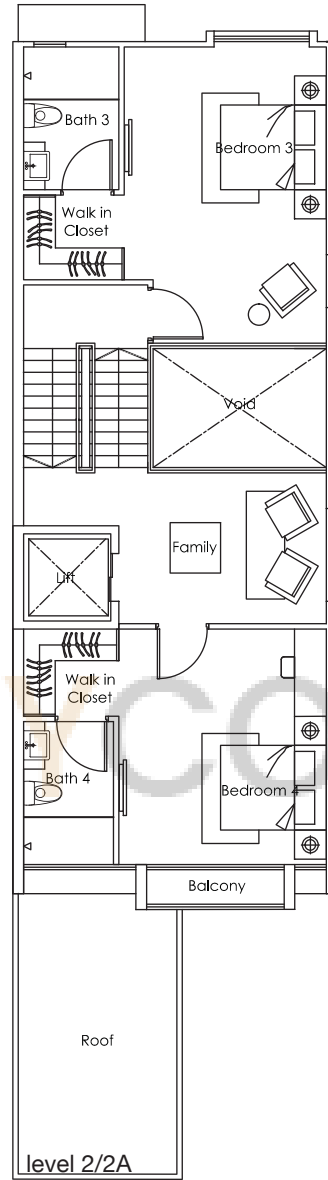




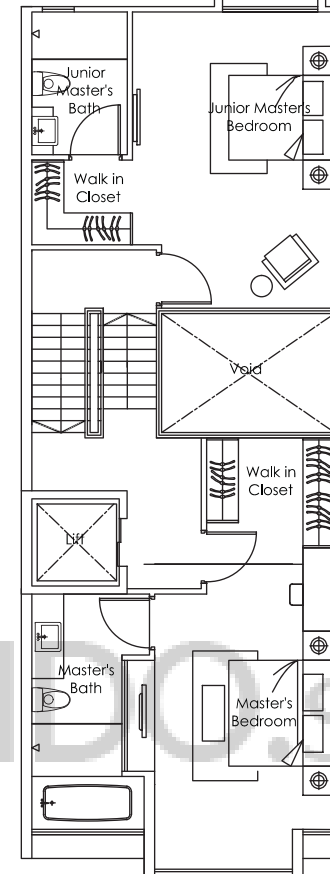
basement



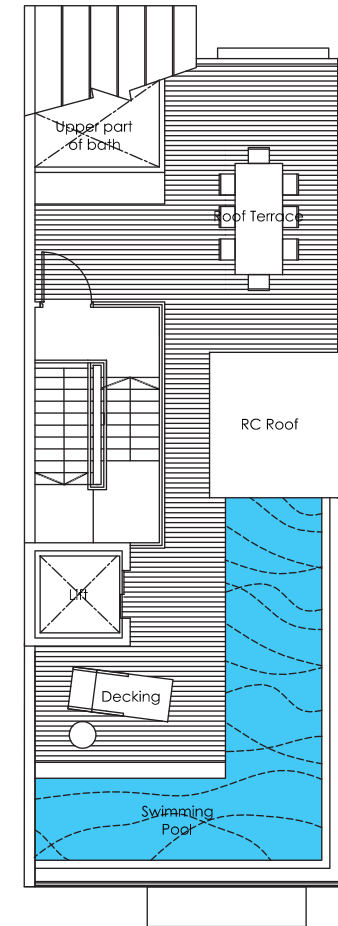
level 1/1A



level 2/2A



level 3/3A



level 4

House No. 60 Wak Hassan Drive

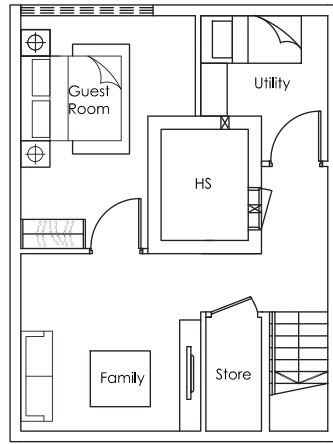
5 + 1 bdrm

Land Area: approx. 205.7 sq m • 2214 sq ft

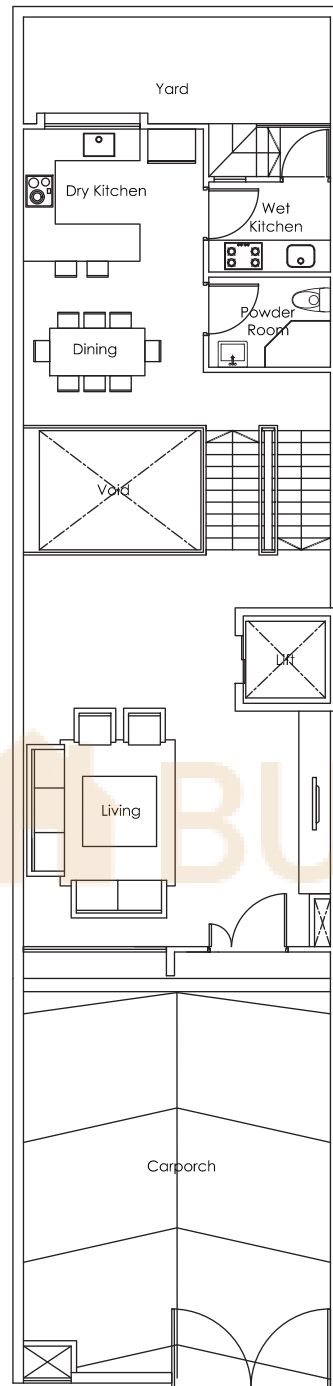
All plans are subject to amendments as approved by the relevant authorities. Site Area is subject to final survey. Plans are not drawn to scale.



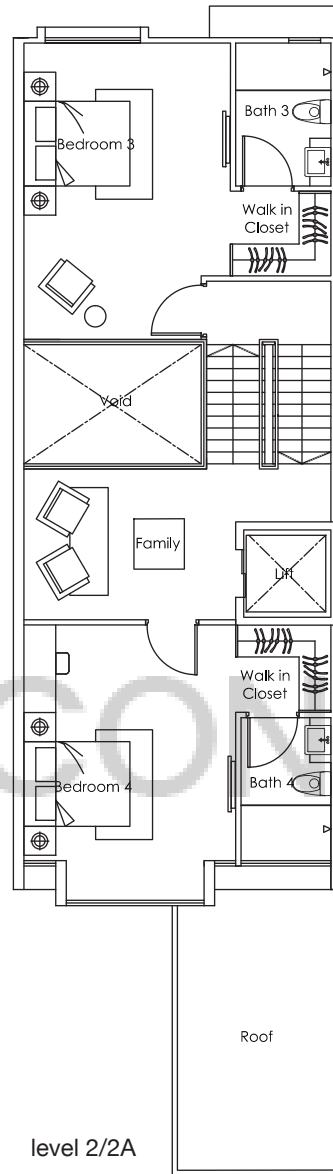
78	76	74	72	70	68	66	64	62	60
----	----	----	----	----	----	----	----	----	----



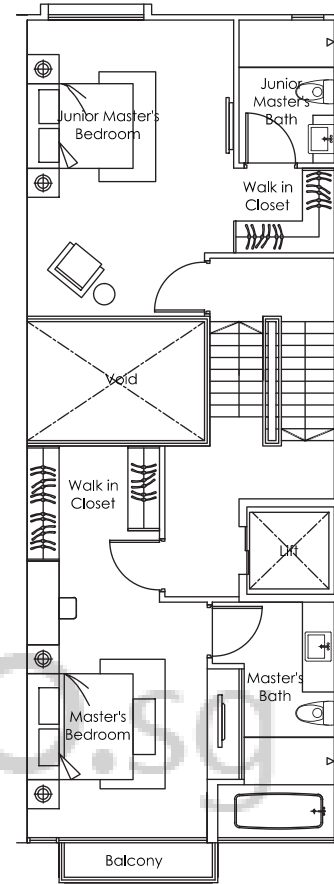
basement



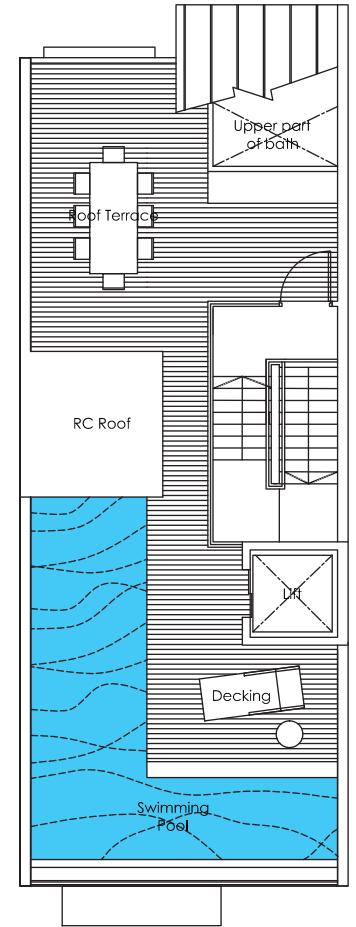
level 1/1A



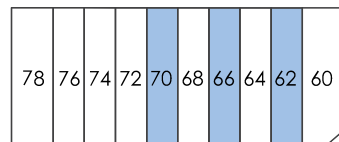
level 2/2A



level 3/3A



level 4

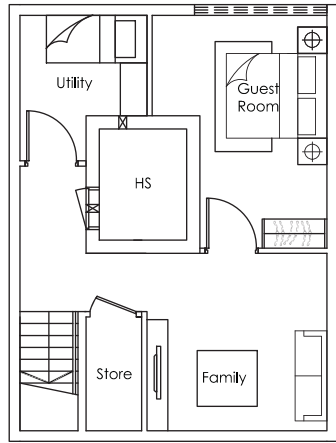


Houses No. 62, 66 & 70 Wak Hassan Drive

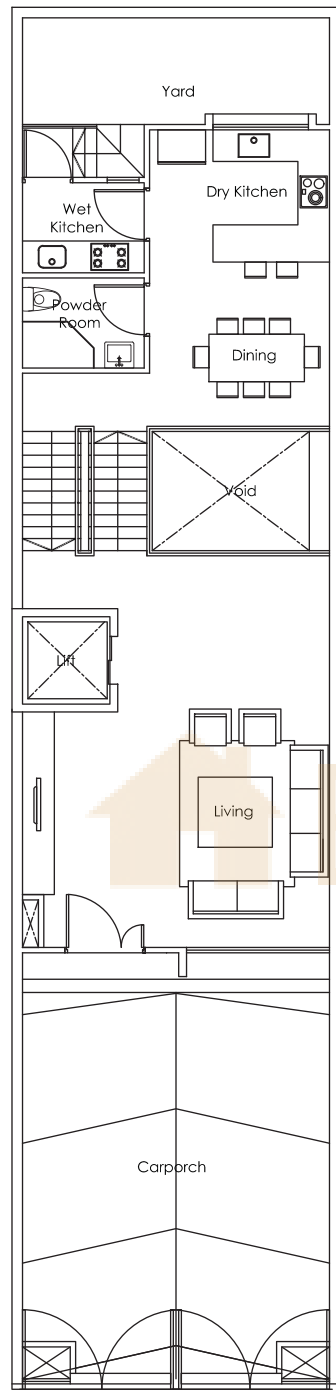
5 + 1 bdrm

Land Area: approx. 156.8 sq m • 1688 sq ft

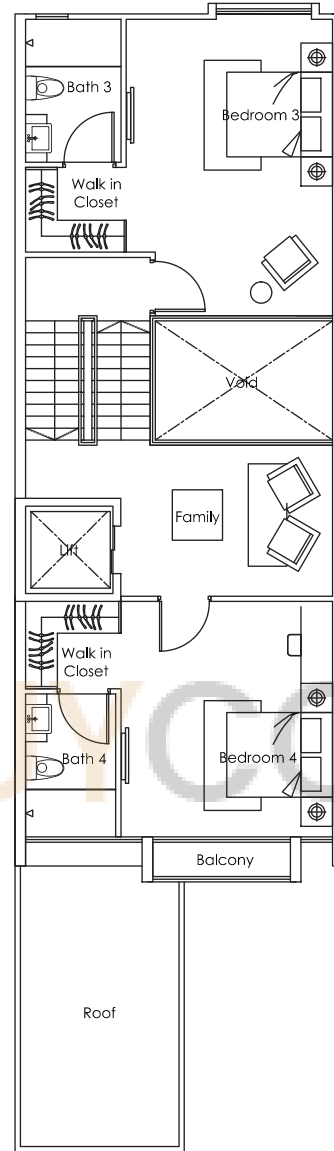
All plans are subject to amendments as approved by the relevant authorities. Site Area is subject to final survey. Plans are not drawn to scale.



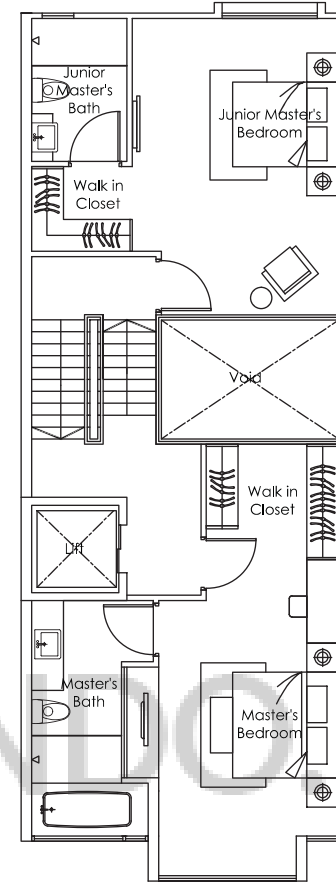
basement



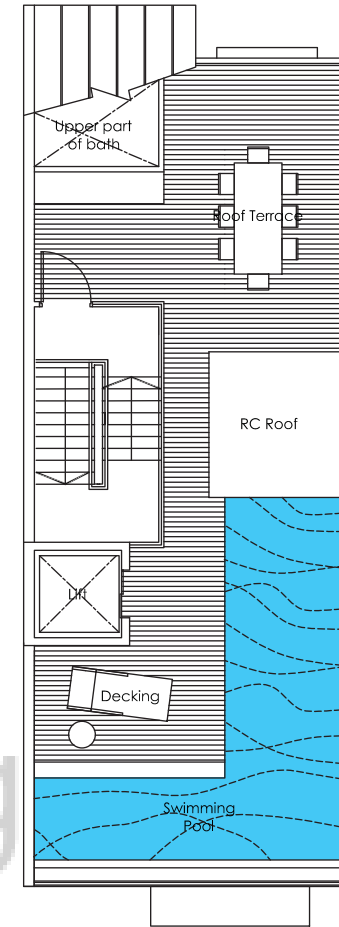
level 1/1A



level 2/2A



level 3/3A



level 4

Houses No. 64 & 68 Wak Hassan Drive

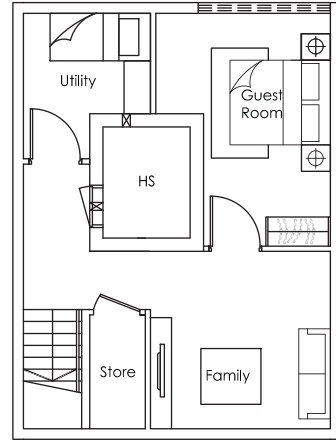
5 + 1 bdrm

Land Area: approx. 156.8 sq m • 1688 sq ft

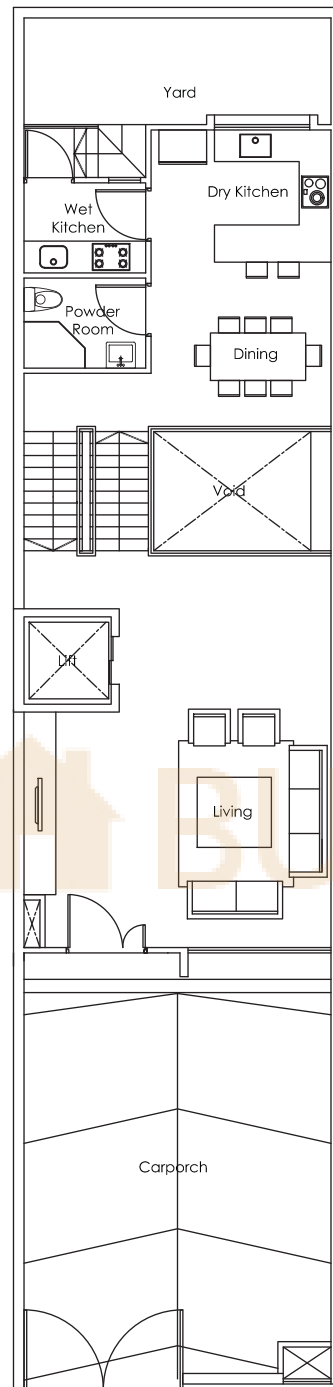
All plans are subject to amendments as approved by the relevant authorities. Site Area is subject to final survey. Plans are not drawn to scale.



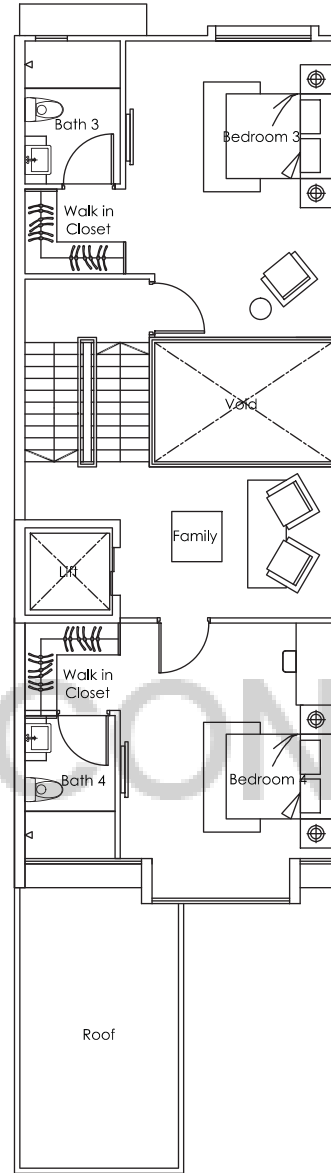
78	76	74	72	70	68	66	64	62	60
----	----	----	----	----	----	----	----	----	----



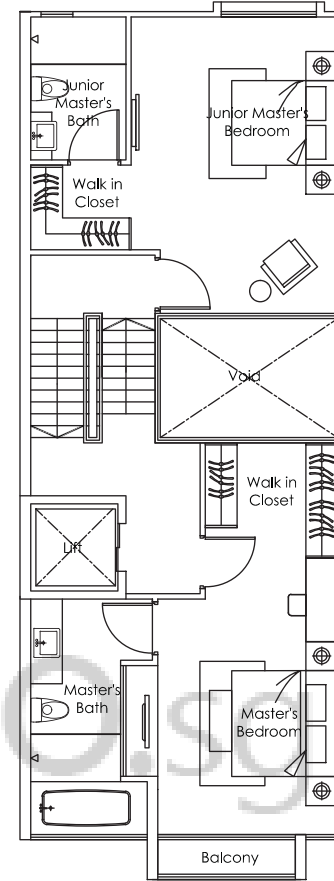
basement



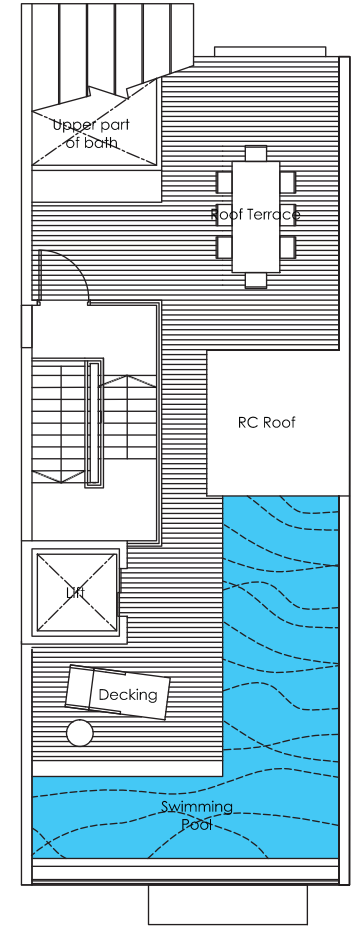
level 1/1A



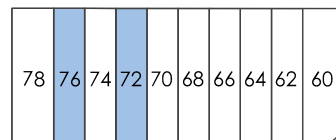
level 2/2A



level 3/3A



level 4

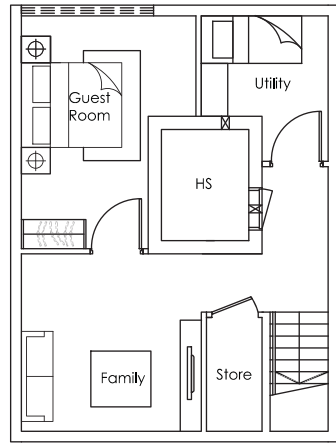


Houses No. 72 & 76 Wak Hassan Drive

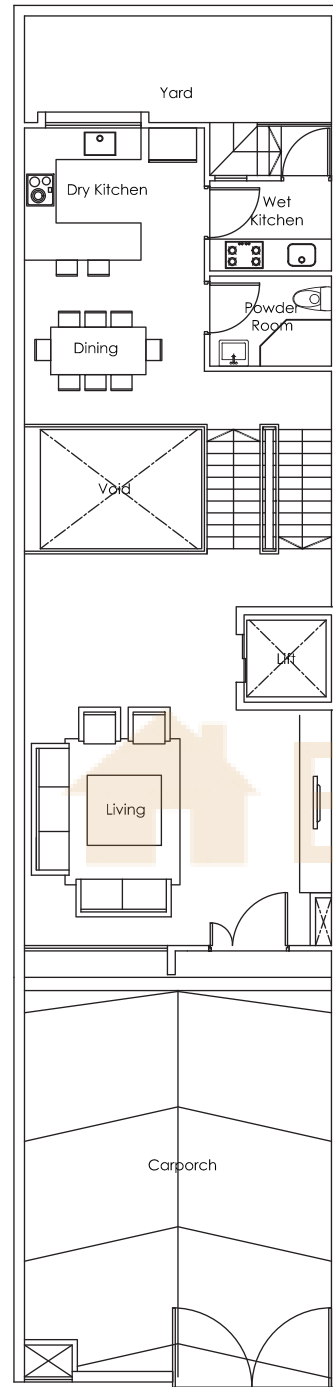
5 + 1 bdrm

Land Area: approx. 156.8 sq m • 1688 sq ft

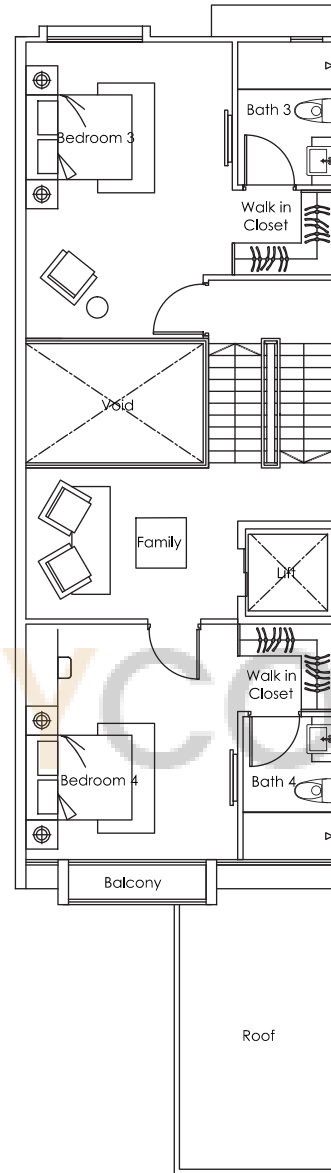
All plans are subject to amendments as approved by the relevant authorities. Site Area is subject to final survey. Plans are not drawn to scale.



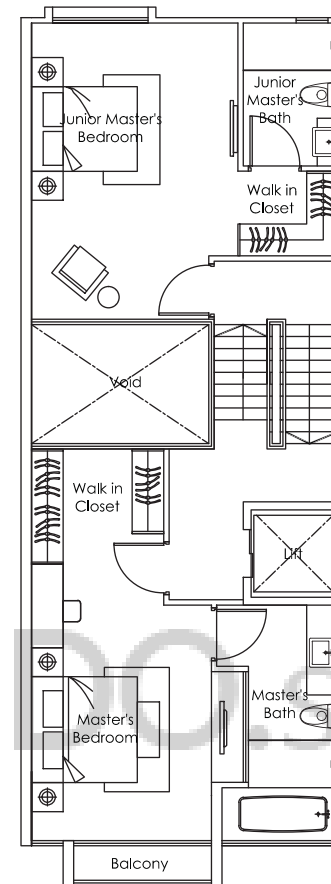
basement



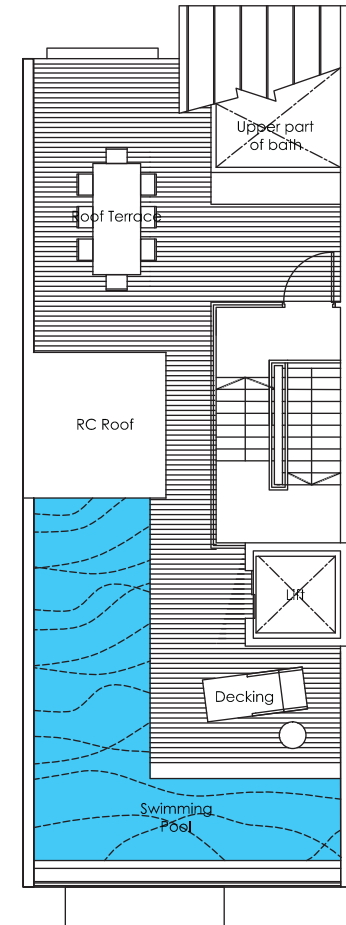
level 1/1A



level 2/2A



level 3/3A



level 4

Houses No. 74 Wak Hassan Drive

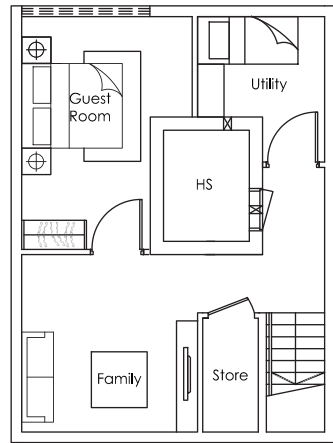
5 + 1 bdrm

Land Area: approx. 156.8 sq m • 1688 sq ft

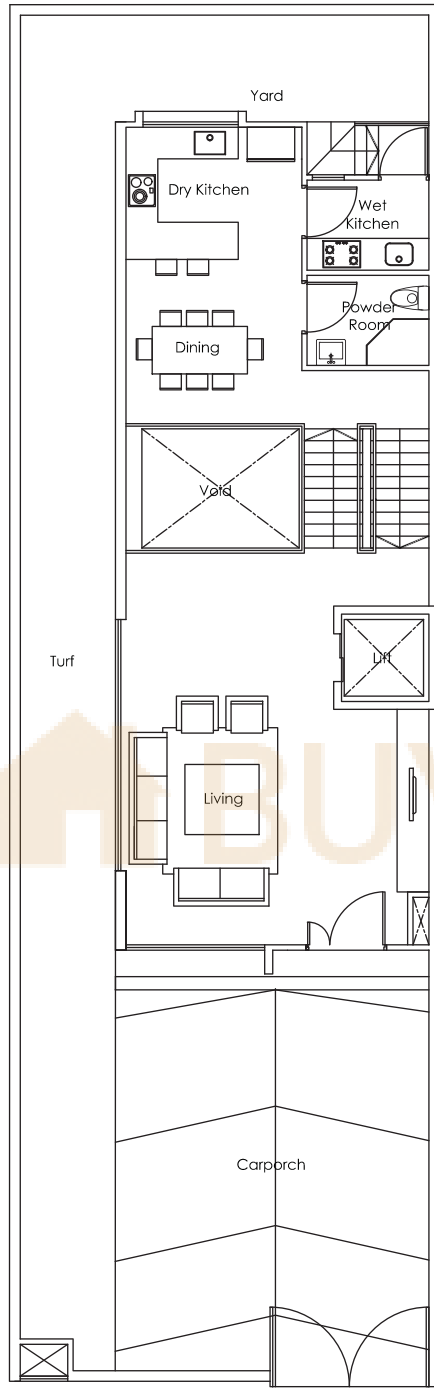
All plans are subject to amendments as approved by the relevant authorities. Site Area is subject to final survey. Plans are not drawn to scale.



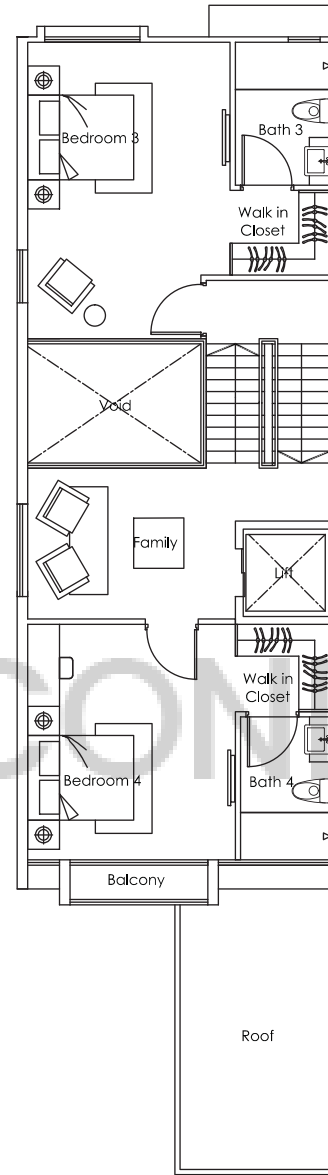
78	76	74	72	70	68	66	64	62	60
----	----	----	----	----	----	----	----	----	----



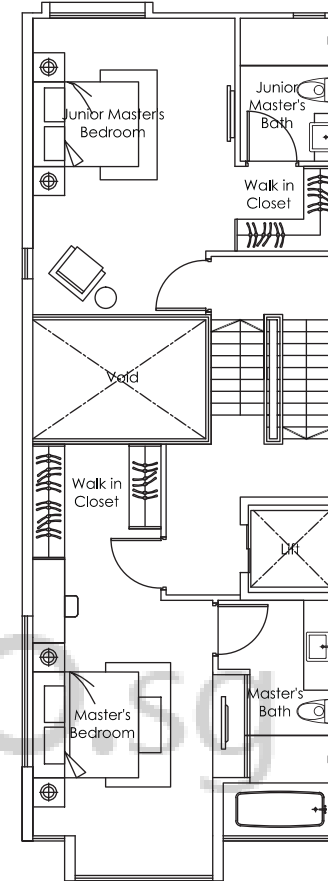
basement



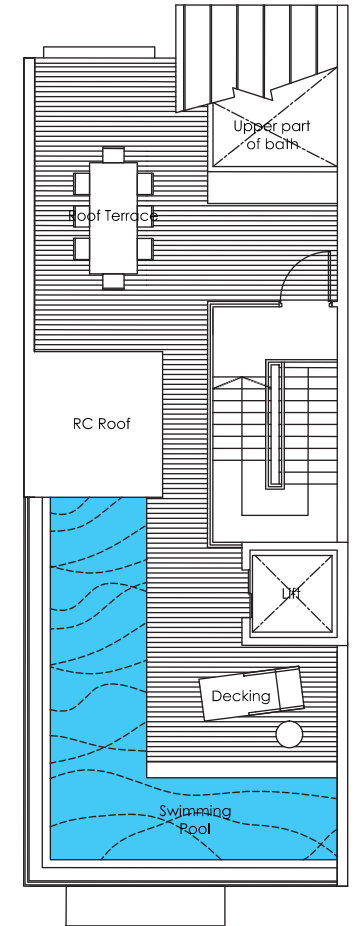
level 1/1A



level 2/2A



level 3/3A



level 4



78	76	74	72	70	68	66	64	62	60
----	----	----	----	----	----	----	----	----	----

House No. 78 Wak Hassan Drive

5 + 1 bdrm

209.7 sq m • 2257 sq ft

All plans are subject to amendments as approved by the relevant authorities. Site Area is subject to final survey. Plans are not drawn to scale.