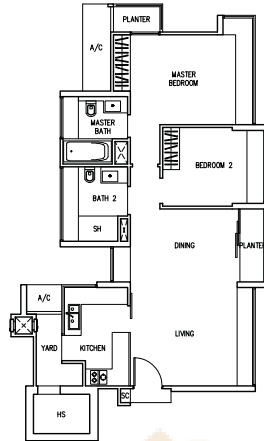


Type A1

2-Bedroom
97 sq m / 1044 sq ft

Block 8

#04-10 to #21-10

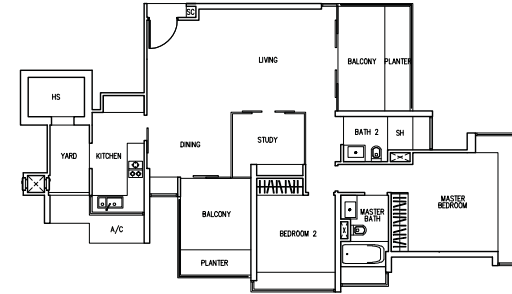


Type B1

2+1 Bedroom
125 sq m / 1346 sq ft

Block 2

#03-04 to #22-04

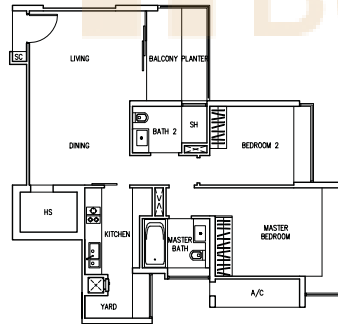


Type A2

2-Bedroom
94 sq m / 1012 sq ft

Block 8

#04-11 to #21-11
#04-14 to #21-14

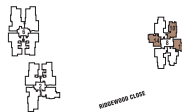
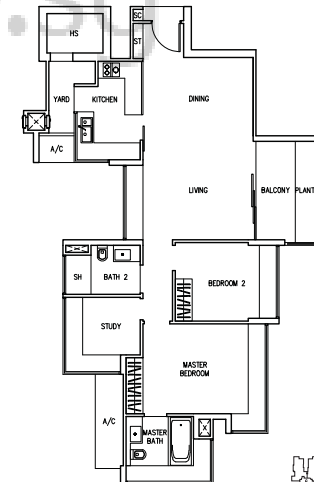


Type B2

2+1 Bedroom
111 sq m / 1195 sq ft

Block 8

#03-12 to #22-12



The above plans are subject to change as may be approved by the relevant authority. Areas are approximate measurements and subject to final survey. Plans are not to scale.

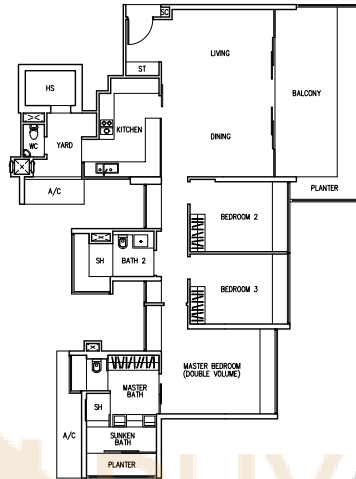
The above plans are subject to change as may be approved by the relevant authority. Areas are approximate measurements and subject to final survey. Plans are not to scale.

Type C1a

3-Bedroom
176 sq m / 1894 sq ft
(inclusive of 11 sq m / 118 sq ft of void area)

Block 2 (Odd storeys)
#05-03 to #21-03

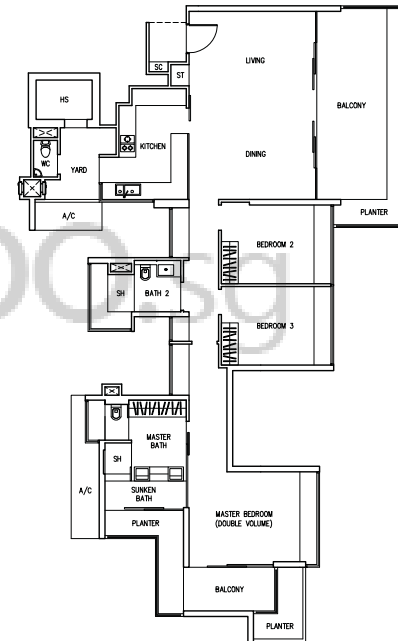
Block 6 (Odd storeys)
#05-05 to #19-05
#05-08 to #19-08



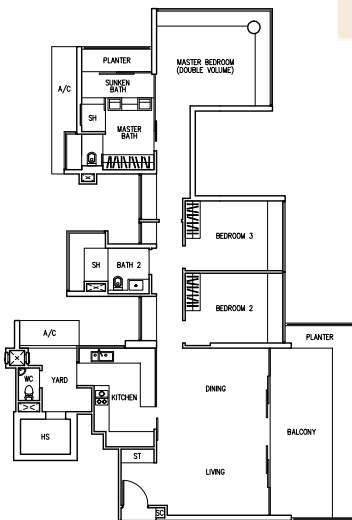
Type C1c

3-Bedroom
196 sq m / 2110 sq ft
(inclusive of 16 sq m / 172 sq ft of void area)

Block 6 (Even storeys)
#06-08 to #18-08



BUYCONDO.SG



Type C1b

3-Bedroom
192 sq. m. / 2067 sq. ft.
(inclusive of 19 sq m / 205 sq ft of void area)

Block 2 (Even storeys)
#06-03 to #20-03

Block 6 (Even storeys)
#06-05 to #20-05



WINDWARD CLUSE

The above plans are subject to change as may be approved by the relevant authority. Areas are approximate measurements and subject to final survey. Plans are not to scale.



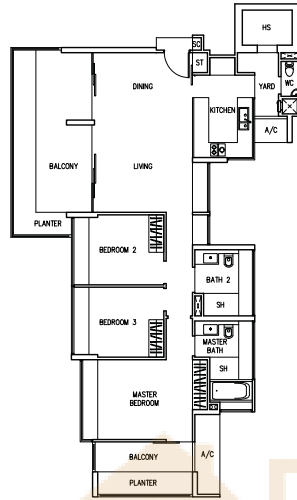
WINDWARD CLUSE

The above plans are subject to change as may be approved by the relevant authority. Areas are approximate measurements and subject to final survey. Plans are not to scale.

Type C2

3-Bedroom
144 sq m / 1550 sq ft

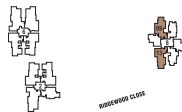
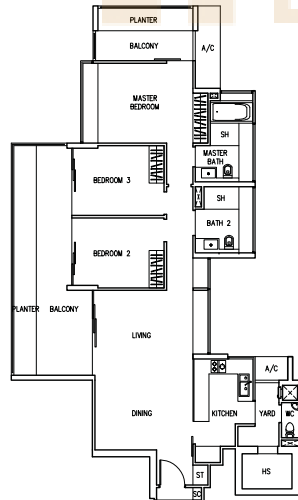
Block 8
#03-13 to #22-13



Type C3

3-Bedroom
148 sq m / 1593 sq ft

Block 8
#04-09 to #21-09

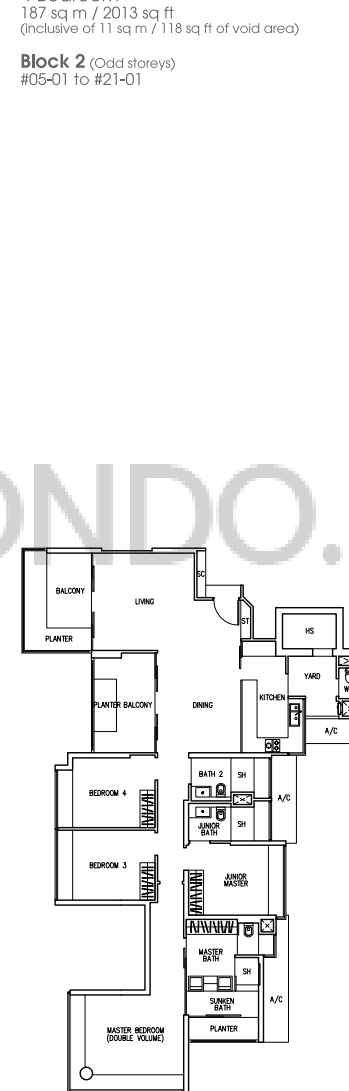


The above plans are subject to change as may be approved by the relevant authority. Areas are approximate measurements and subject to final survey. Plans are not to scale.

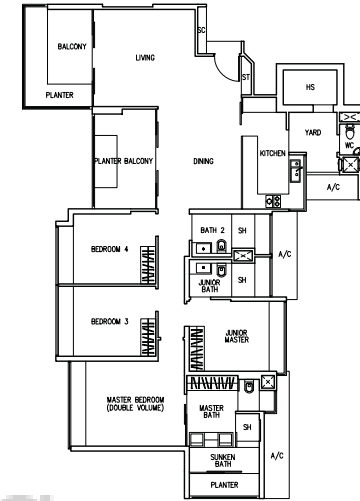
Type D1a

4-Bedroom
187 sq m / 2013 sq ft
(inclusive of 11 sq m / 118 sq ft of void area)

Block 2 (Odd storeys)
#05-01 to #21-01



The above plans are subject to change as may be approved by the relevant authority. Areas are approximate measurements and subject to final survey. Plans are not to scale.



Type D1b

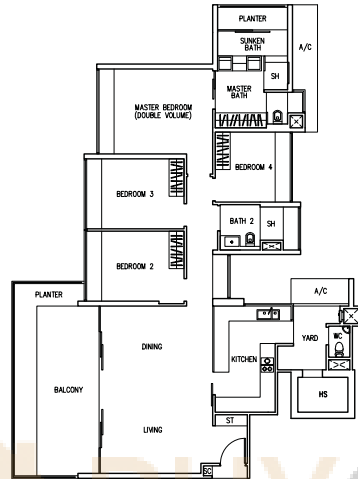
4-Bedroom
202 sq m / 2174 sq ft
(inclusive of 19 sq m / 205 sq ft of void area)

Block 2 (Even storeys)
#02-01 to #20-01

Type D2a

4-Bedroom
182 sq m / 1959 sq ft
(inclusive of 11 sq m / 118 sq ft of void area)

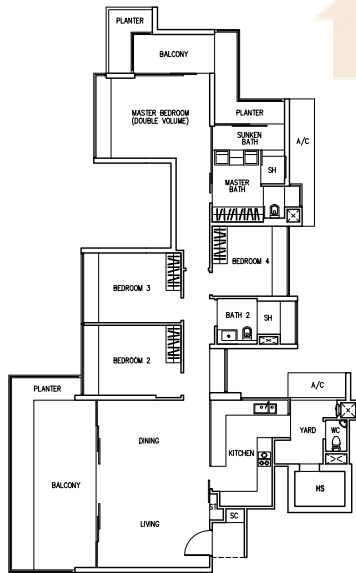
Block 2 (Odd storeys)
#05-02 to #21-02



Type D2b

4-Bedroom
203 sq m / 2185 sq ft
(inclusive of 16 sq m / 172 sq ft of void area)

Block 2 (Even storeys)
#06-02 to #18-02

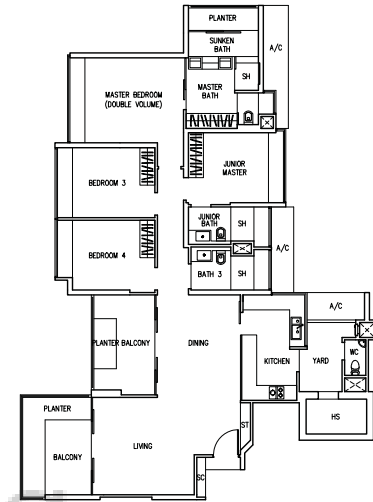


The above plans are subject to change as may be approved by the relevant authority. Areas are approximate measurements and subject to final survey. Plans are not to scale.

Type D3a

4-Bedroom
190 sq m / 2045 sq ft
(inclusive of 11 sq m / 118 sq ft of void area)

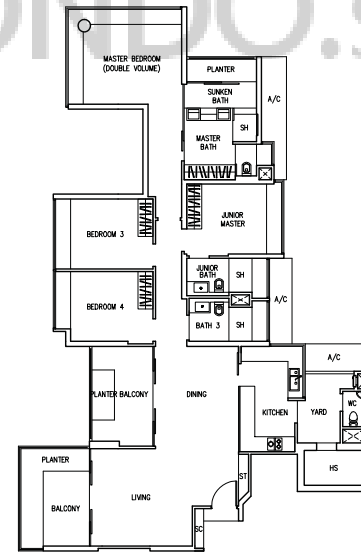
Block 6 (Odd storeys)
#05-06 to #19-06



Type D3b

4-Bedroom
205 sq m / 2207 sq ft
(inclusive of 19 sq m / 205 sq ft of void area)

Block 6 (Even storeys)
#02-06 to #20-06

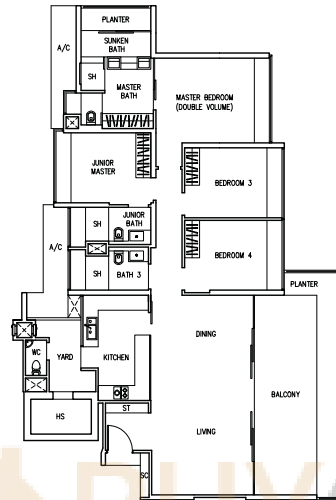


The above plans are subject to change as may be approved by the relevant authority. Areas are approximate measurements and subject to final survey. Plans are not to scale.

Type D4a

4-Bedroom
200 sq m / 2153 sq ft
(inclusive of 11 sq m / 118 sq ft of void area)

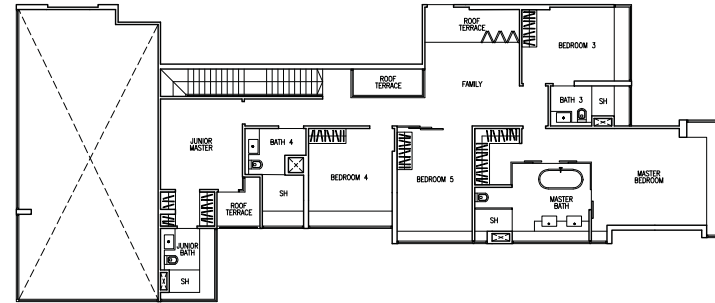
Block 6 (Odd storeys)
#05-07 to #19-07



Type PH1

464 sq m / 4994 sq ft
(inclusive of 65 sq m / 700 sq ft of void area)

Block 2
#23-01

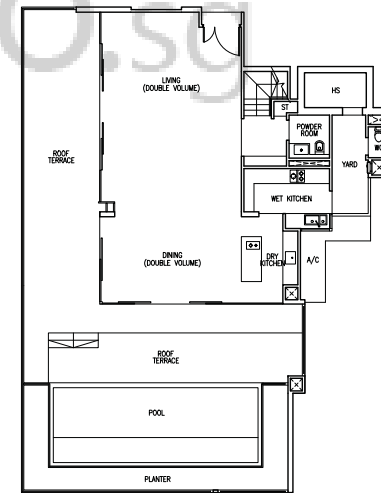
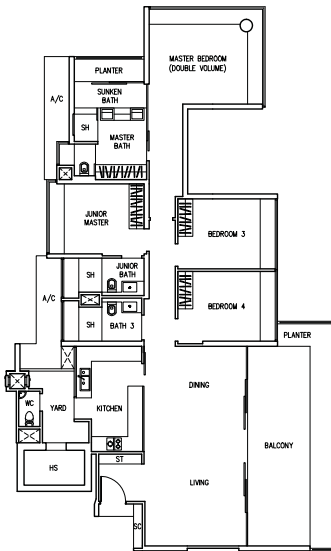


Upper Level

Type D4b

4-Bedroom
215 sq m / 2314 sq ft
(inclusive of 19 sq m / 205 sq ft of void area)

Block 6 (Even storeys)
#02-07 to #20-07



Lower Level



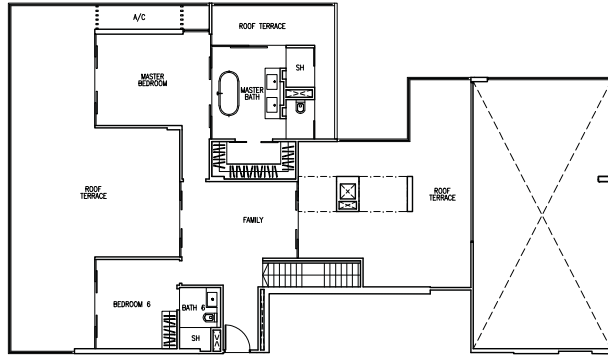
The above plans are subject to change as may be approved by the relevant authority. Areas are approximate measurements and subject to final survey. Plans are not to scale.

The above plans are subject to change as may be approved by the relevant authority. Areas are approximate measurements and subject to final survey. Plans are not to scale.

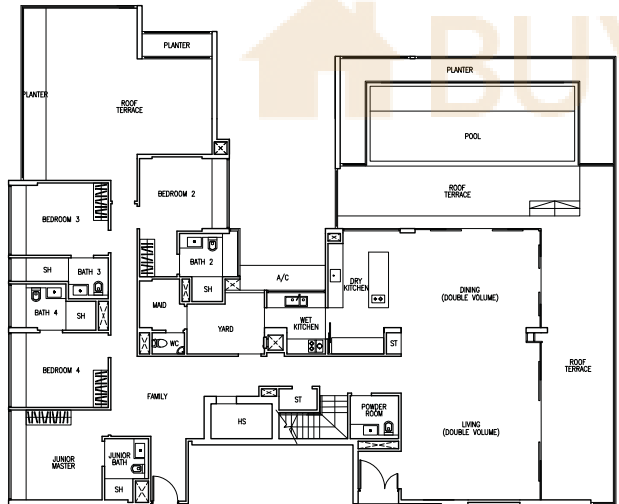
Type PH2

658 sq m / 7083 sq ft
(inclusive of 62 sq m / 667 sq ft of void area)

Block 2
#23-03



Upper Level



Lower Level



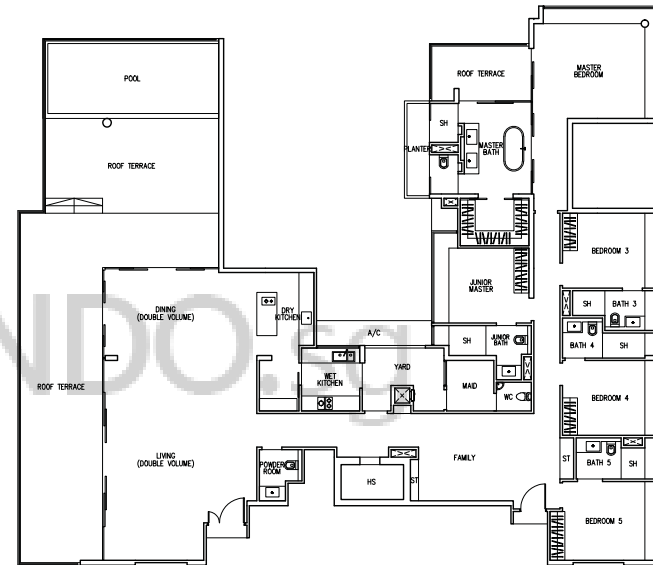
WINDWARD CLIVE

The above plans are subject to change as may be approved by the relevant authority. Areas are approximate measurements and subject to final survey. Plans are not to scale.

Type PH3

474 sq m / 5102 sq ft
(inclusive of 69 sq m / 743 sq ft of void area)

Block 6
#22-06



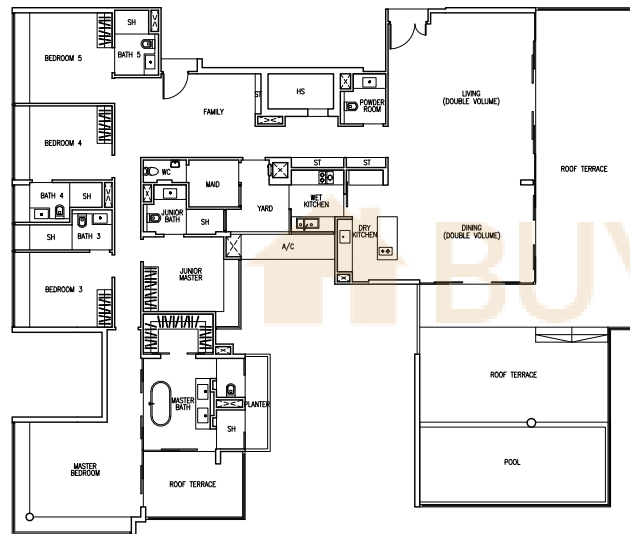
WINDWARD CLIVE

The above plans are subject to change as may be approved by the relevant authority. Areas are approximate measurements and subject to final survey. Plans are not to scale.

Type PH4

457 sq m / 4919 sq ft
(inclusive of 65 sq m / 700 sq ft of void area)

Block 6
#22-08

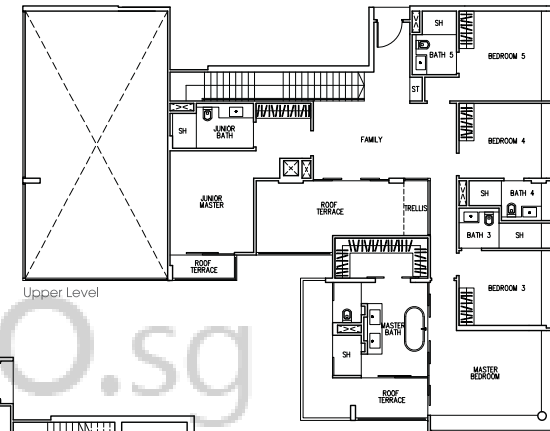


The above plans are subject to change as may be approved by the relevant authority. Areas are approximate measurements and subject to final survey. Plans are not to scale.

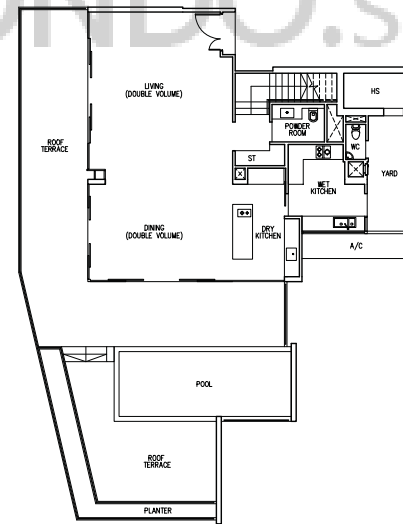
Type PH5

495 sq m / 5328 sq ft
(inclusive of 63 sq m / 678 sq ft of void area)

Block 6
#23-05



Upper Level



Lower Level

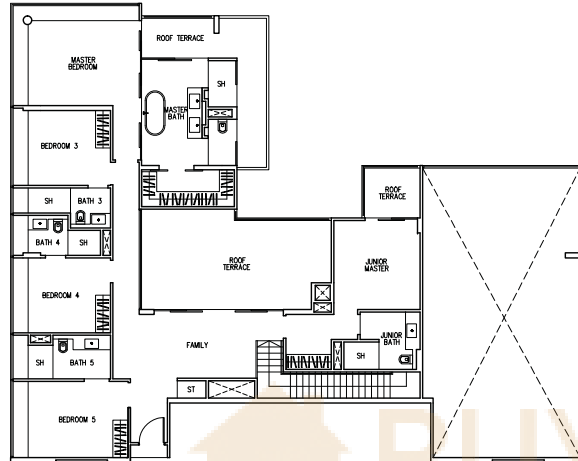


The above plans are subject to change as may be approved by the relevant authority. Areas are approximate measurements and subject to final survey. Plans are not to scale.

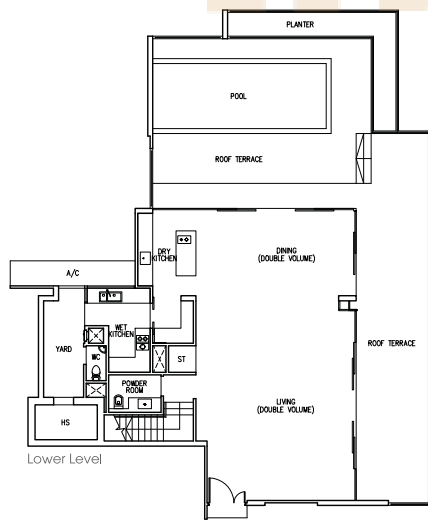
Type PH6

533 sq m / 5737 sq ft
(inclusive of 74 sq m / 797 sq ft of void area)

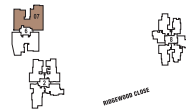
Block 6
#23-07



Upper Level



Lower Level



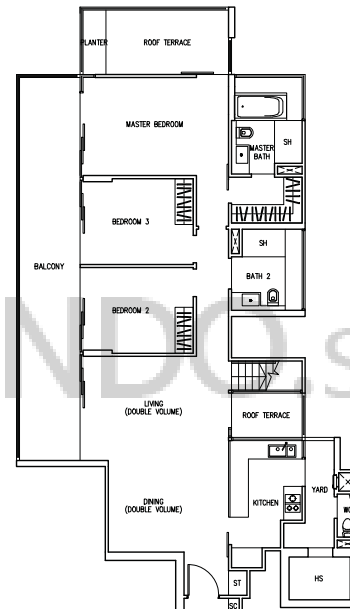
WINDWARD CLIFF

The above plans are subject to change as may be approved by the relevant authority. Areas are approximate measurements and subject to final survey. Plans are not to scale.

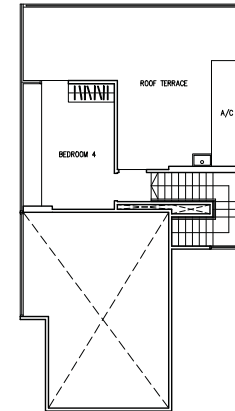
Type PH7

238 sq m / 2562 sq ft
(inclusive of 29 sq m / 312 sq ft of void area)

Block 8
#22-09



Lower Level



Upper Level



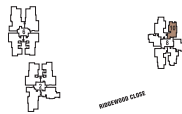
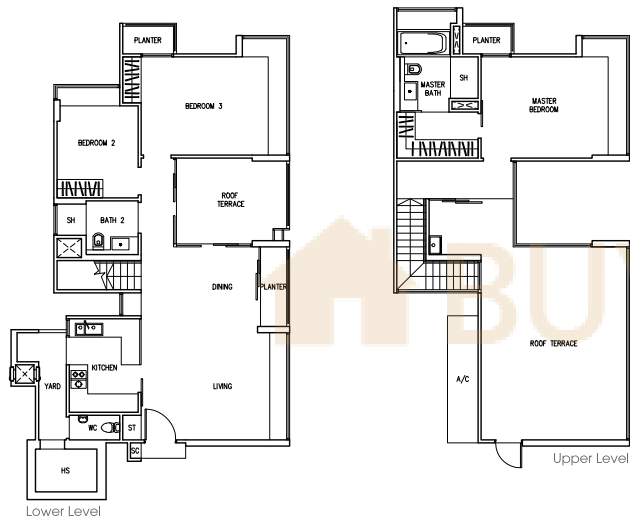
WINDWARD CLIFF

The above plans are subject to change as may be approved by the relevant authority. Areas are approximate measurements and subject to final survey. Plans are not to scale.

Type PH8

195 sq m / 2099 sq ft
(inclusive of 10 sq m / 108 sq ft of void area)

Block 8
#22-10

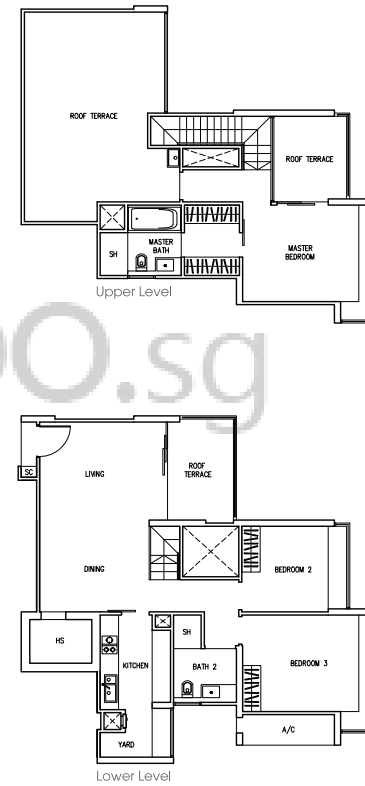


The above plans are subject to change as may be approved by the relevant authority. Areas are approximate measurements and subject to final survey. Plans are not to scale.

Type PH9

165 sq m / 1776 sq ft

Block 8
#22-11



The above plans are subject to change as may be approved by the relevant authority. Areas are approximate measurements and subject to final survey. Plans are not to scale.

Type PH10

227 sq m / 2443 sq ft
(inclusive of 10 sq m / 108 sq ft of void area)

Block 8
#23-12

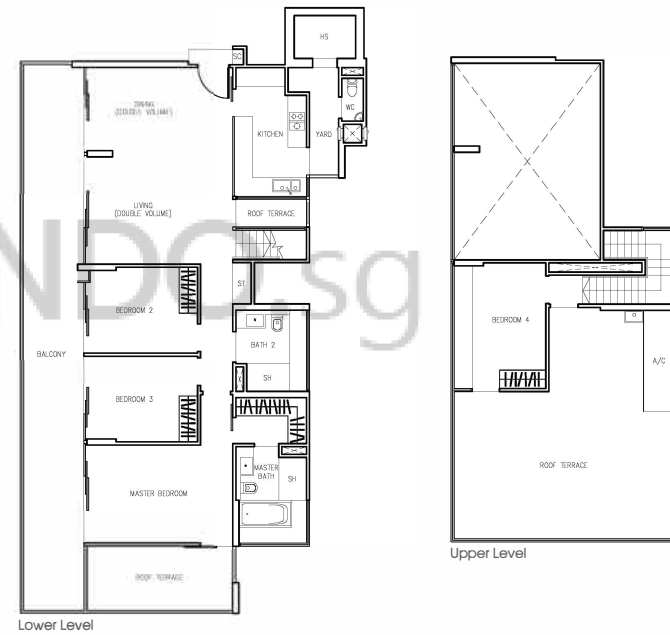


The above plans are subject to change as may be approved by the relevant authority. Areas are approximate measurements and subject to final survey. Plans are not to scale.

Type PH11

271 sq m / 2917 sq ft
(inclusive of 31 sq m / 334 sq ft of void area)

Block 8
#23-13



The above plans are subject to change as may be approved by the relevant authority. Areas are approximate measurements and subject to final survey. Plans are not to scale.