

**TYPE A**

**3 BEDROOM DUAL-KEY**  
TOTAL 7 UNITS - 3<sup>RD</sup> & 9<sup>TH</sup> STOREY

#03-01/ #04-01/ #05-01/ #06-01/  
#07-01/ #08-01/ #09-01

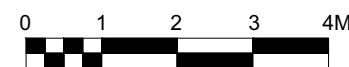
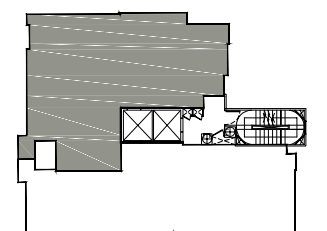
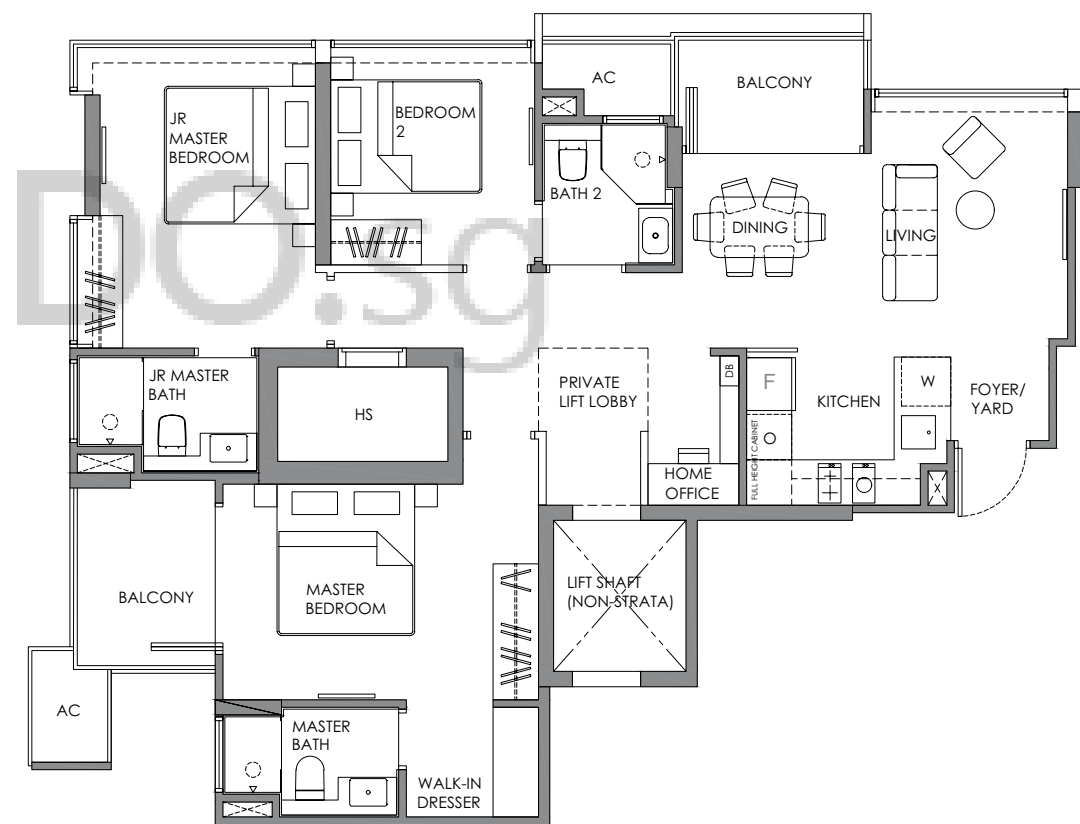
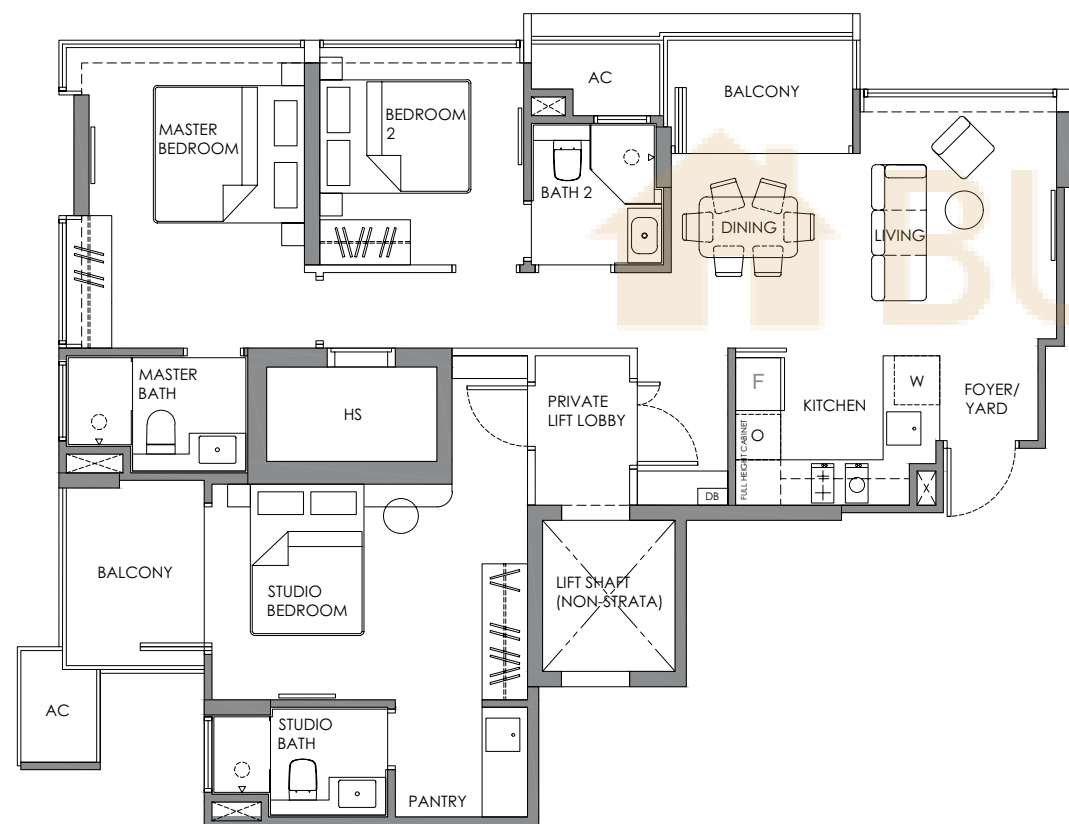
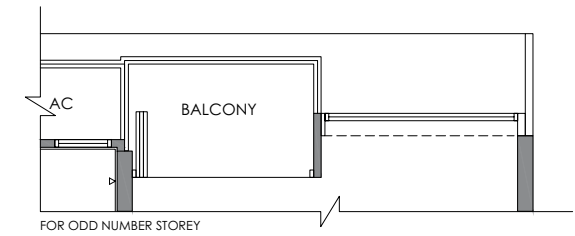
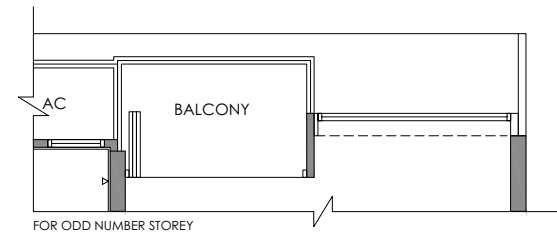
Strata area : 101 sqm / 1,087 sqft

**TYPE A1**

**3 BEDROOM + HOME OFFICE**  
TOTAL 2 UNITS - 10<sup>TH</sup> & 11<sup>TH</sup> STOREY

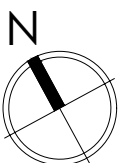
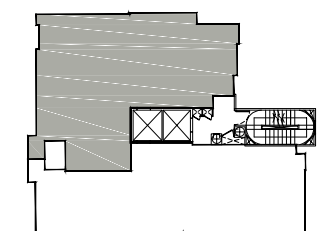
#10-01 / #11-01

Strata area : 101 sqm / 1,087 sqft



Plans are not to scale and subject to any amendment as may be approved by relevant authorities. All areas are approximate and are subject to final survey.

HS = Household Shelter; DB = Distribution Board; AC = Air Con Ledge;  
X = Void; Master Bath = Master Bathroom; Jr Master Bath = Junior Master Bathroom; Bath = Bathroom; Pwdr = Powder Room; F = Fridge; O = Oven;  
W = Washing Machine Cum Dryer



Plans are not to scale and subject to any amendment as may be approved by relevant authorities. All areas are approximate and are subject to final survey.

HS = Household Shelter; DB = Distribution Board; AC = Air Con Ledge;  
X = Void; Master Bath = Master Bathroom; Jr Master Bath = Junior Master Bathroom; Bath = Bathroom; Pwdr = Powder Room; F = Fridge; O = Oven;  
W = Washing Machine Cum Dryer

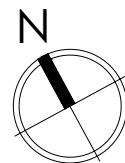
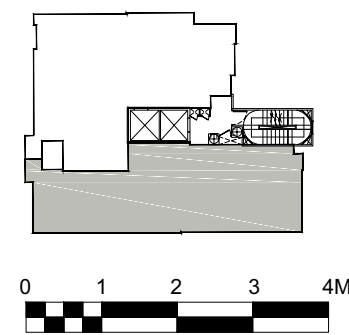
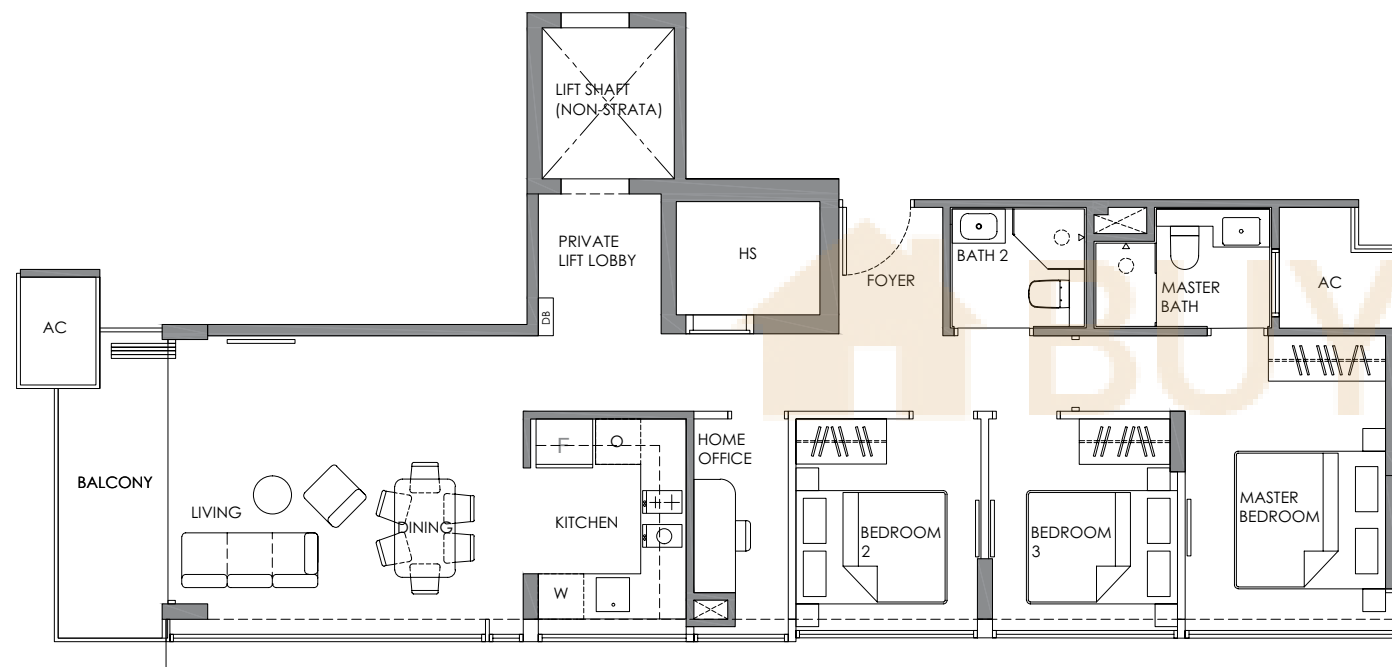
## TYPE B

### 3 BEDROOM + HOME OFFICE

TOTAL 9 UNITS - 3<sup>RD</sup> & 11<sup>TH</sup> STOREY

#03-02/ #04-02/ #05-02/ #06-02/ #07-02/  
#08-02/ #09-02/ #10-02/ #11-02

Strata area : 93 sqm / 1,001 sqft



Plans are not to scale and subject to any amendment as may be approved by relevant authorities. All areas are approximate and are subject to final survey.

HS = Household Shelter; DB = Distribution Board; AC = Air Con Ledge;  
X = Void; Master Bath = Master Bathroom; Jr Master Bath = Junior Master Bathroom; Bath = Bathroom; Pwdr = Powder Room; F = Fridge; O = Oven;  
W = Washing Machine Cum Dryer

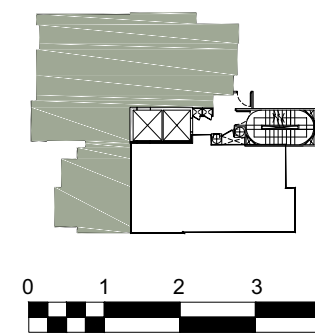
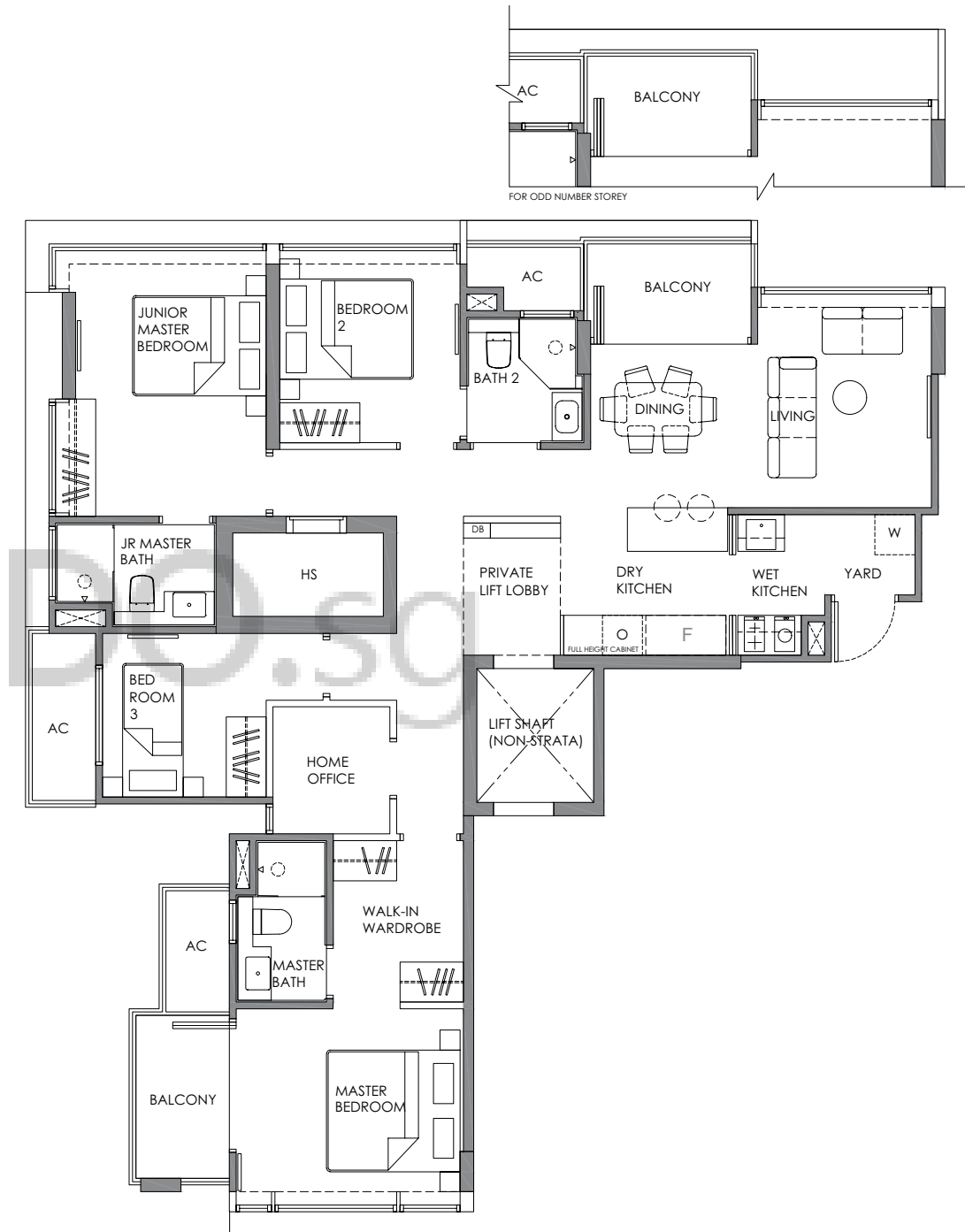
## TYPE C

### 4 BEDROOM + HOME OFFICE

TOTAL 4 UNITS - 12<sup>TH</sup> TO 15<sup>TH</sup> STOREY

#12-01/ #13-01/ #14-01/ #15-01

Strata area : 119 sqm / 1,281 sqft



Plans are not to scale and subject to any amendment as may be approved by relevant authorities. All areas are approximate and are subject to final survey.

HS = Household Shelter; DB = Distribution Board; AC = Air Con Ledge;  
X = Void; Master Bath = Master Bathroom; Jr Master Bath = Junior Master Bathroom; Bath = Bathroom; Pwdr = Powder Room; F = Fridge; O = Oven;  
W = Washing Machine Cum Dryer

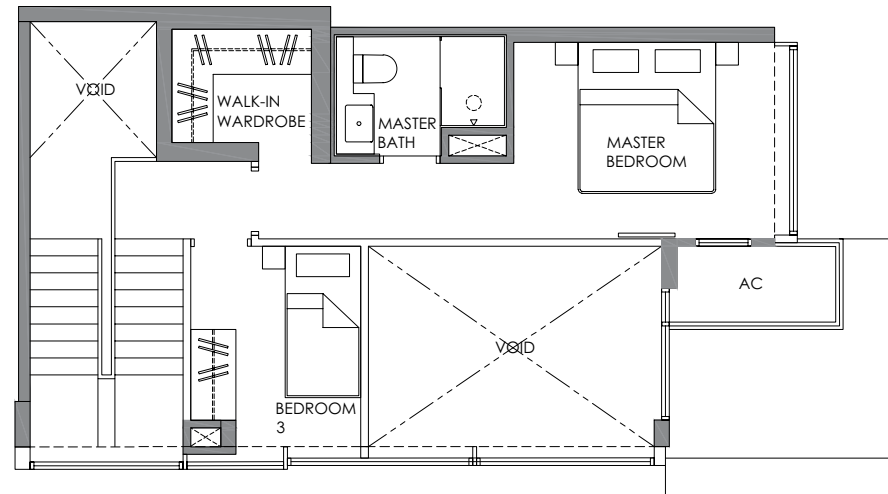
### TYPE D

#### 3 BEDROOM (DUPLEX)

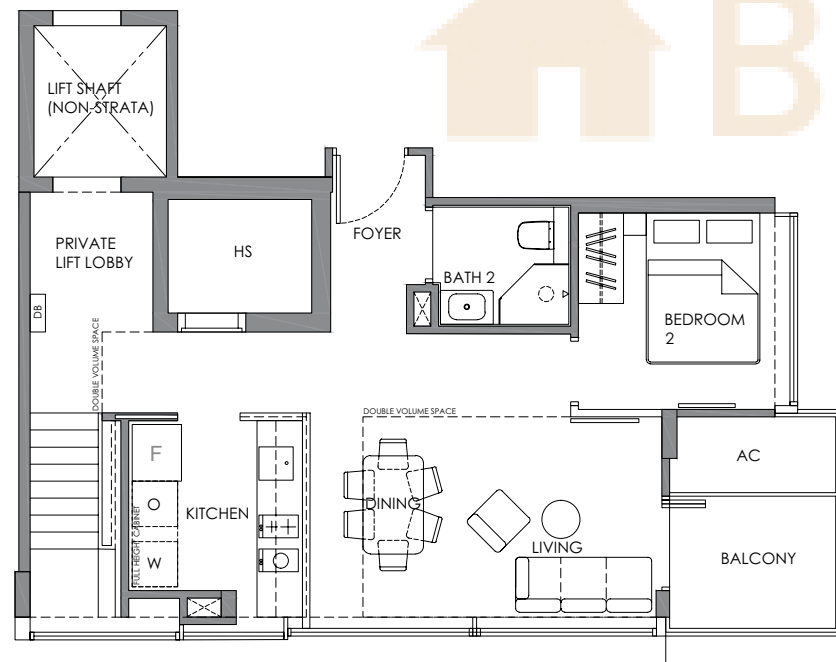
TOTAL 2 UNITS AT 12<sup>TH</sup> / 13<sup>TH</sup> / 14 & 15<sup>TH</sup> STOREY

#12-02/ #14-02

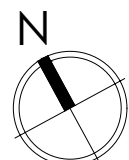
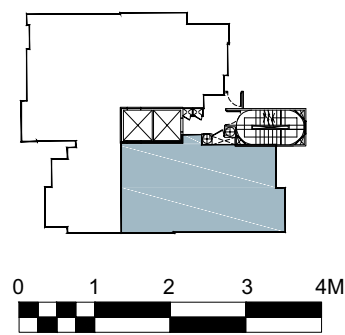
Strata area : 118 sqm / 1,270 sqft



UPPER STOREY



LOWER STOREY



Plans are not to scale and subject to any amendment as may be approved by relevant authorities. All areas are approximate and are subject to final survey.

HS = Household Shelter; DB = Distribution Board; AC = Air Con Ledge;  
 X = Void; Master Bath = Master Bathroom; Jr Master Bath = Junior Master Bathroom; Bath = Bathroom; Pwdr = Powder Room; F = Fridge; O = Oven;  
 W = Washing Machine Cum Dryer

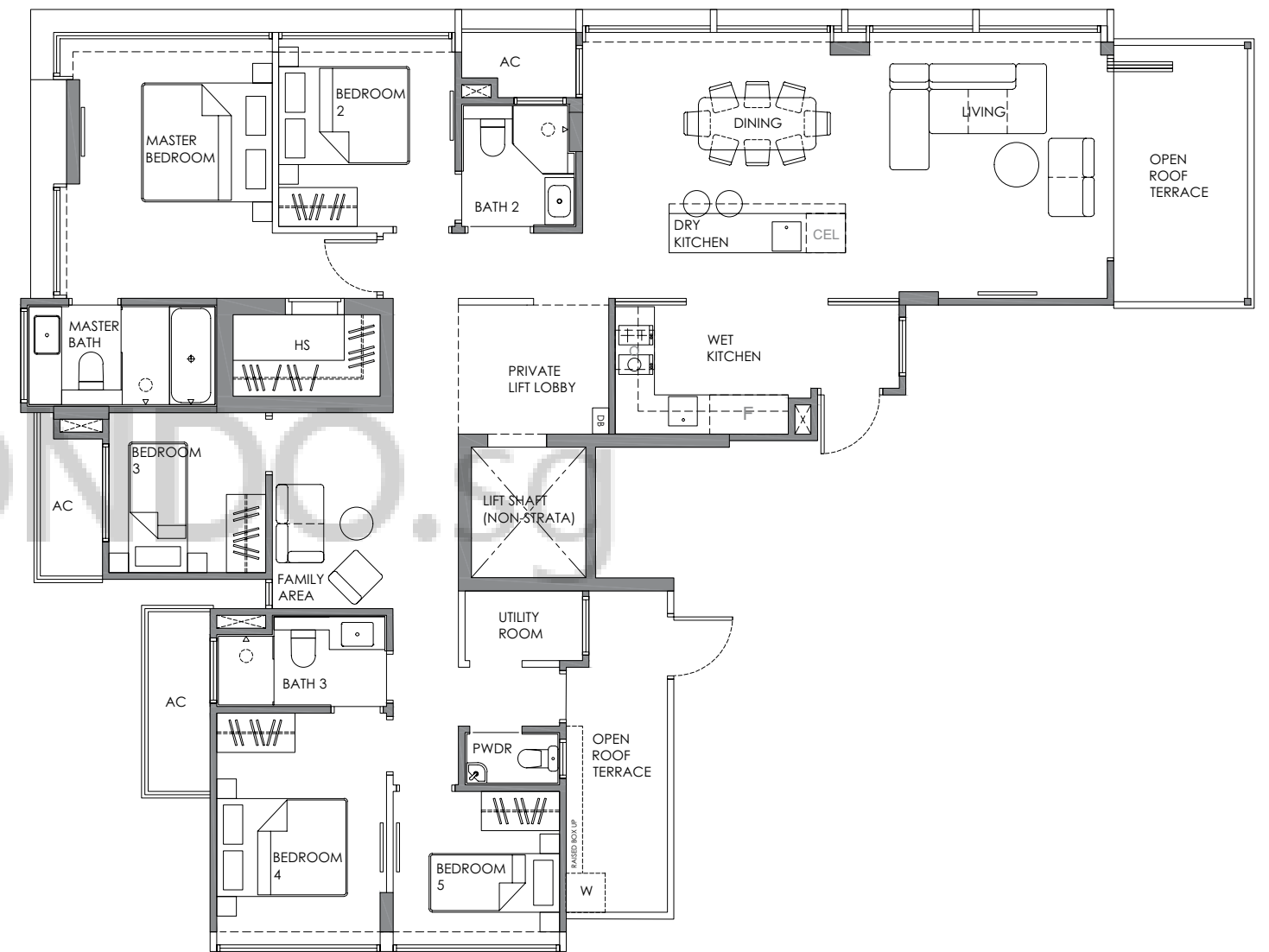
### TYPE PH

#### 5 BEDROOM

TOTAL 1 UNIT AT 16<sup>TH</sup> STOREY

#16-01

Strata area : 158 sqm / 1,701 sqft



Plans are not to scale and subject to any amendment as may be approved by relevant authorities. All areas are approximate and are subject to final survey.

HS = Household Shelter; DB = Distribution Board; AC = Air Con Ledge;  
 X = Void; Master Bath = Master Bathroom; Jr Master Bath = Junior Master Bathroom; Bath = Bathroom; Pwdr = Powder Room; F = Fridge; O = Oven;  
 W = Washing Machine Cum Dryer

