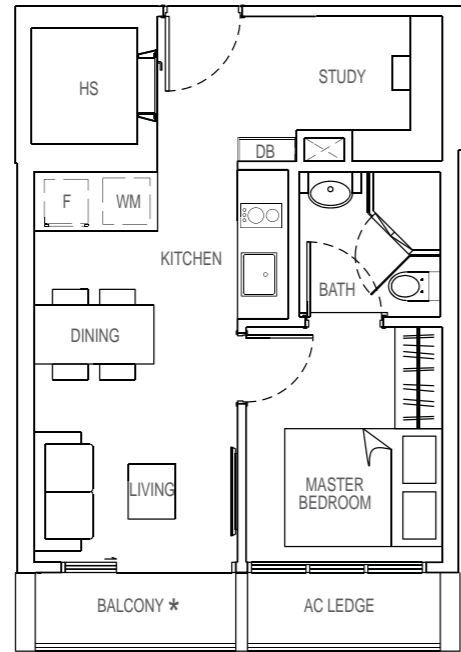


TYPE A1

1 + 1 bedroom
43 sqm

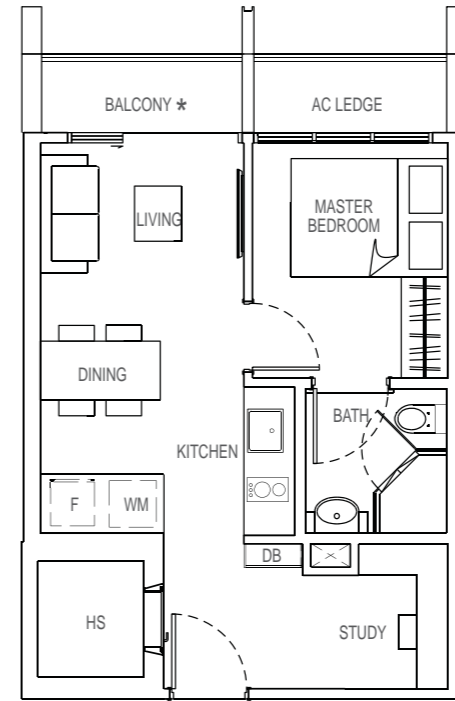
- #04-03
- #05-03
- #06-03
- #07-03
- #08-03
- #09-03



TYPE A2

1 + 1 bedroom
43 sqm

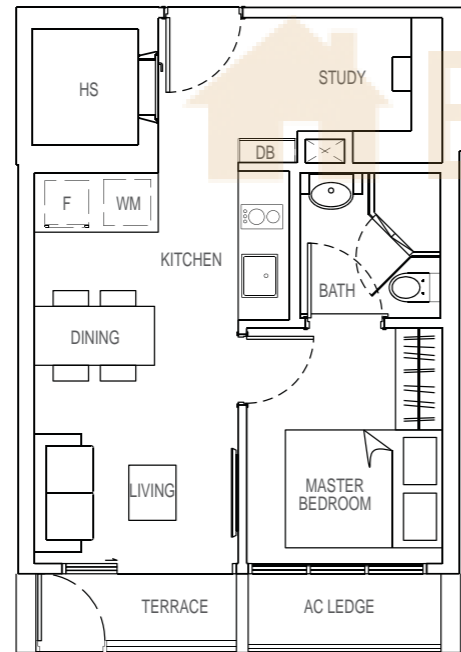
- #03-14



TYPE A1-T

1 + 1 bedroom
43 sqm

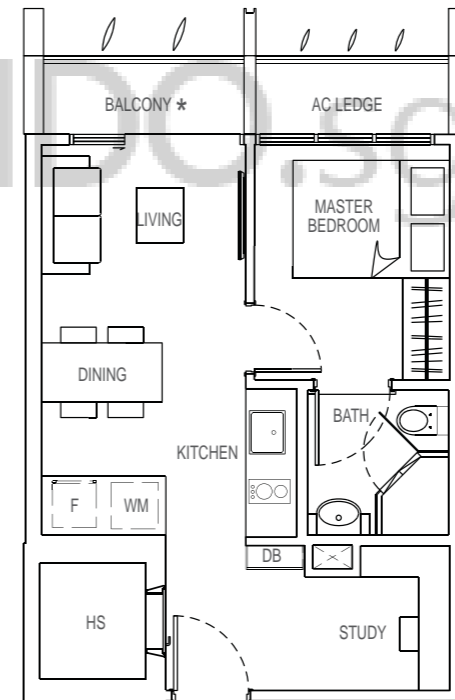
- #03-03



TYPE A3

1 + 1 bedroom
43 sqm

- #04-14
- #05-14
- #06-14
- #07-14
- #08-14
- #09-14

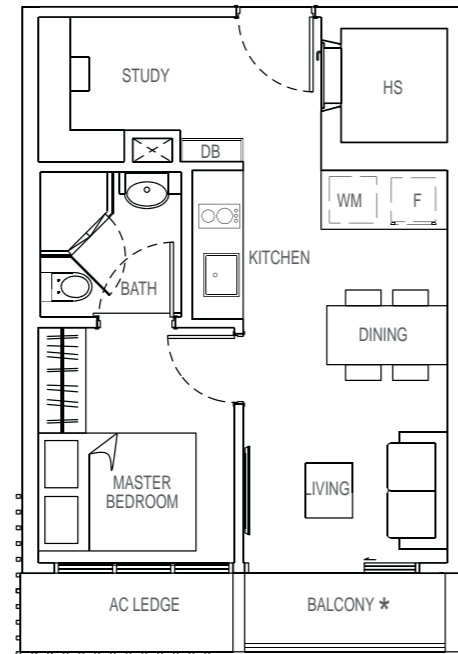


Note : Unit area includes A/C ledge &/or terrace &/or balcony &/or roof terrace where applicable. All plans are subject to amendments as approved by the relevant authorities.
*The balcony shall not be enclosed. Only approved balcony screens are to be used. For an illustration of the approved balcony screen, please refer to page 42 of this brochure."

TYPE A4

1 + 1 bedroom
43 sqm

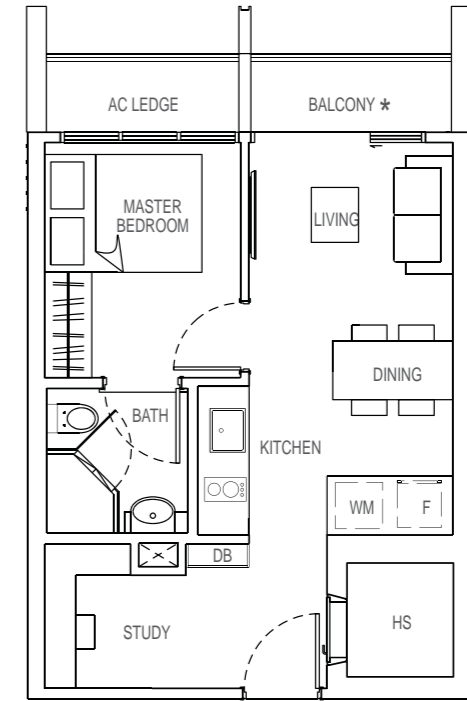
- #04-07
- #05-07
- #06-07
- #07-07
- #08-07
- #09-07
- #10-07



TYPE A5

1 + 1 bedroom
43 sqm

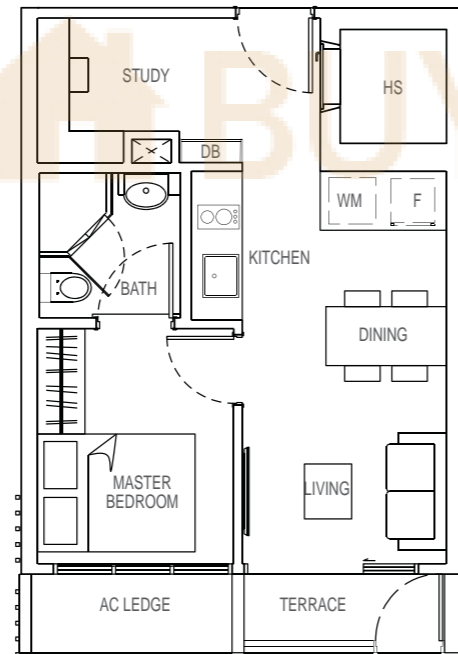
- #03-09



TYPE A4-T

1 + 1 bedroom
43 sqm

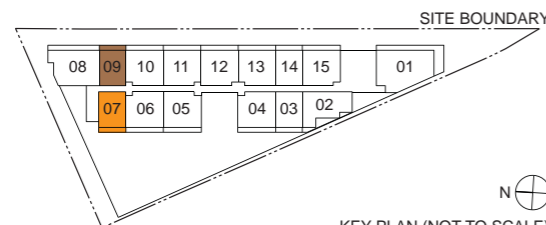
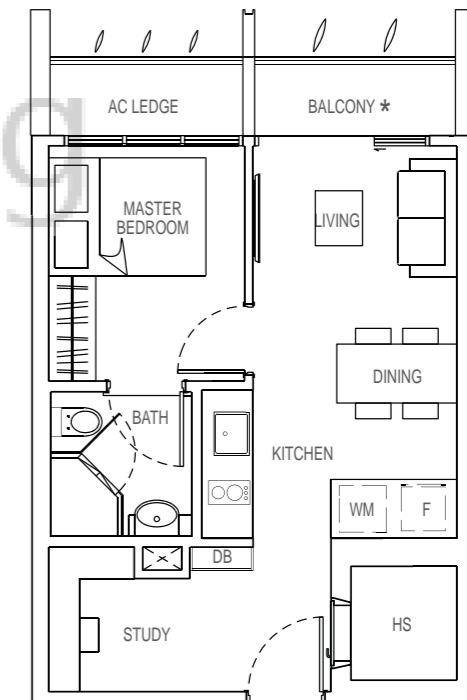
- #03-07



TYPE A6

1 + 1 bedroom
43 sqm

- #04-09
- #05-09
- #06-09
- #07-09
- #08-09
- #09-09
- #10-09



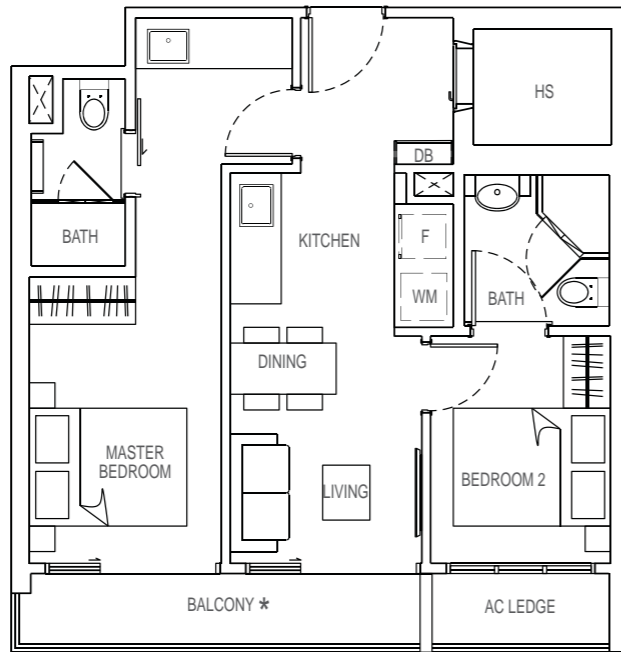
KEY PLAN (NOT TO SCALE)

Note : Unit area includes A/C ledge &/or terrace &/or balcony &/or roof terrace where applicable. All plans are subject to amendments as approved by the relevant authorities.
* "The balcony shall not be enclosed. Only approved balcony screens are to be used. For an illustration of the approved balcony screen, please refer to page 42 of this brochure."

TYPE B1 (MIRROR)

2 bedroom
60 sqm

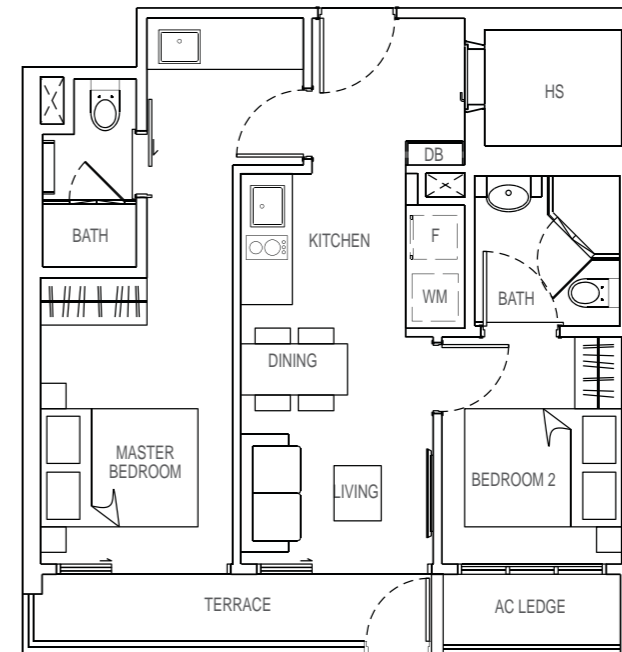
#05-04
#07-04
#09-04



TYPE B1-T (MIRROR)

2 bedroom
60 sqm

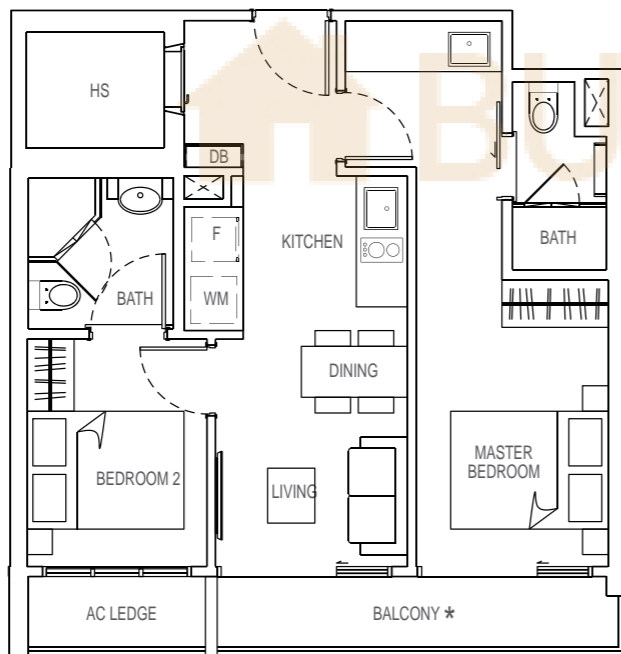
#03-04



TYPE B1

2 bedroom
60 sqm

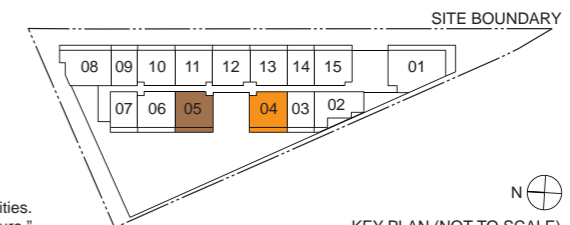
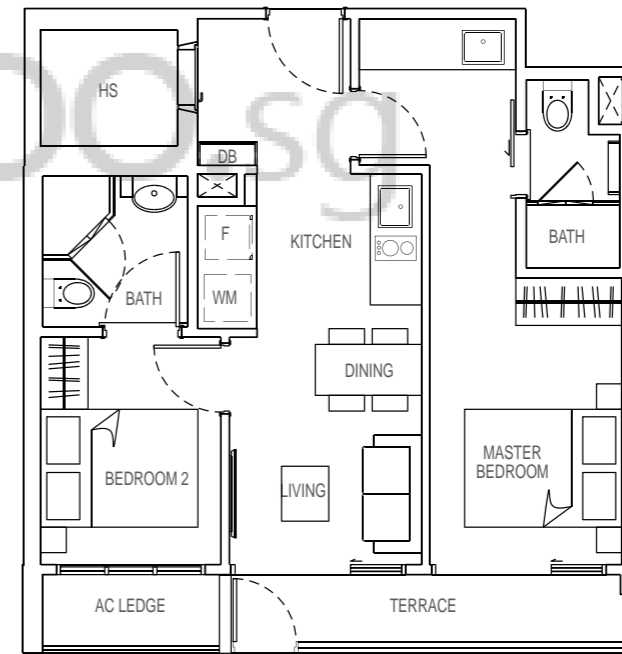
#05-05
#07-05
#09-05



TYPE B1-T

2 bedroom
60 sqm

#03-05



Note : Unit area includes A/C ledge &/or terrace &/or balcony &/or roof terrace where applicable. All plans are subject to amendments as approved by the relevant authorities.
* "The balcony shall not be enclosed. Only approved balcony screens are to be used. For an illustration of the approved balcony screen, please refer to page 42 of this brochure."

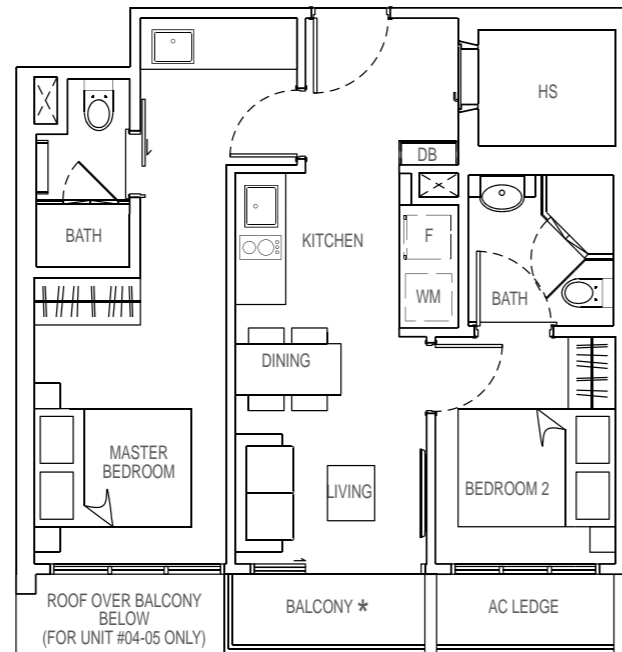


KEY PLAN (NOT TO SCALE)

TYPE B2 (MIRROR)

2 bedroom
57 sqm

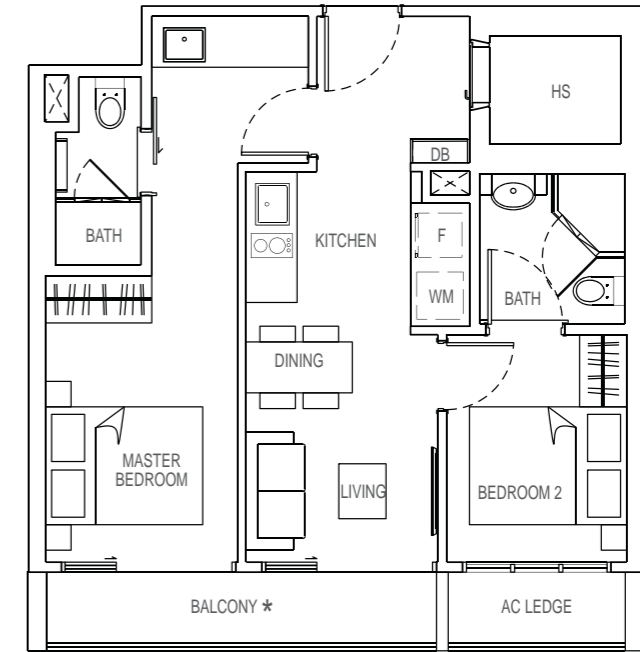
- #04-04
- #06-04
- #08-04



TYPE B3

2 bedroom
60 sqm

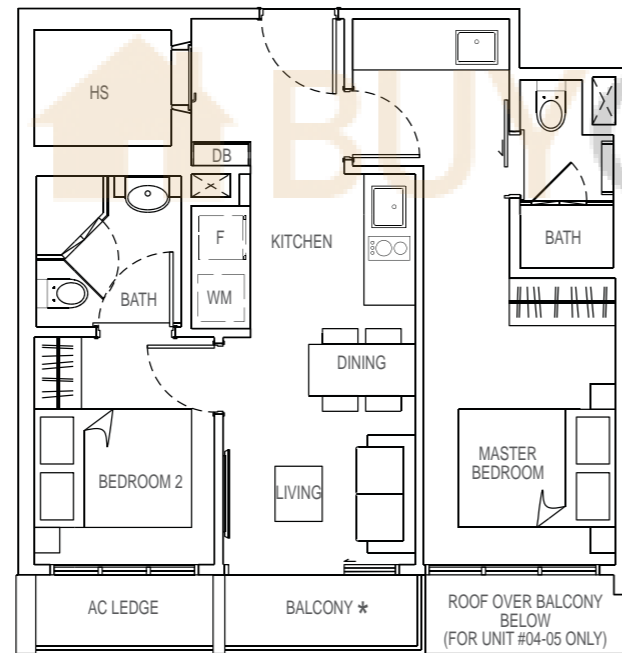
- #04-06
- #05-06
- #06-06
- #07-06
- #08-06
- #09-06



TYPE B2

2 bedroom
57 sqm

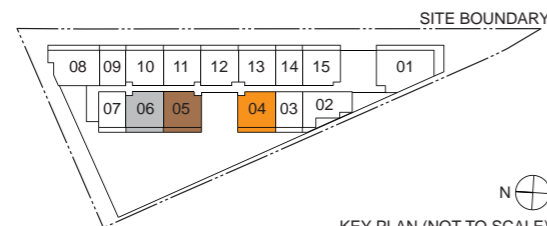
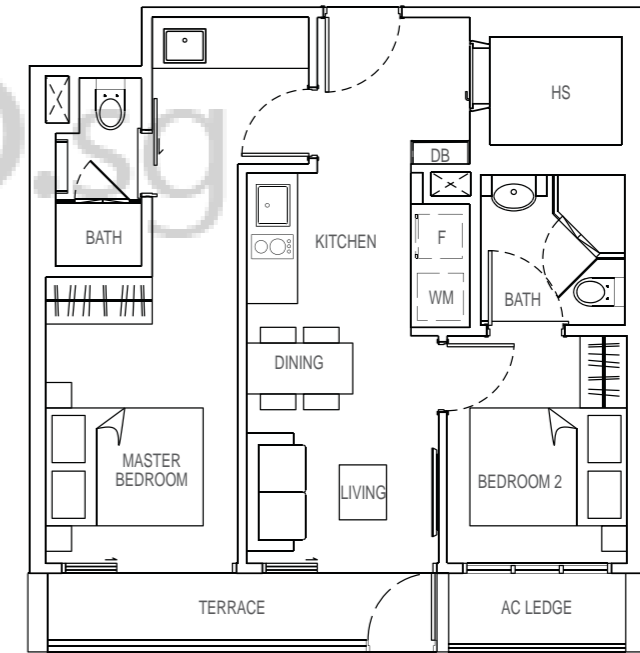
- #04-05
- #06-05
- #08-05



TYPE B3-T

2 bedroom
60 sqm

- #03-06



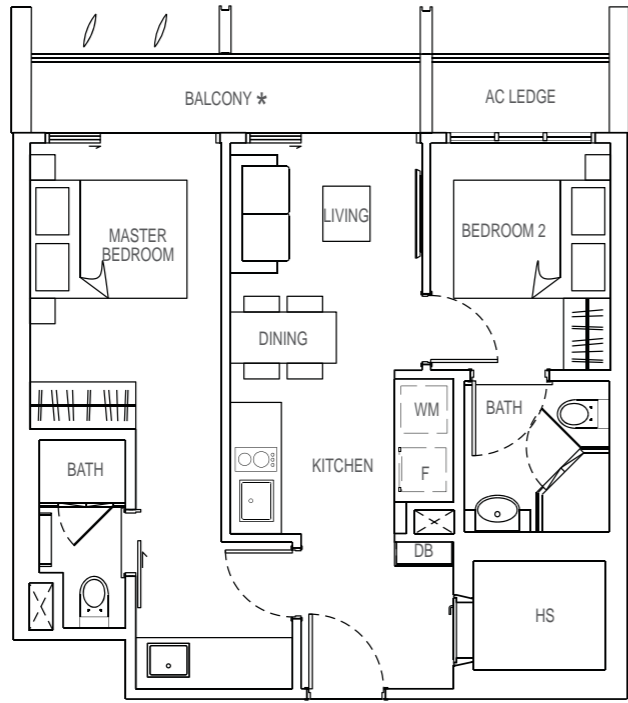
KEY PLAN (NOT TO SCALE)

Note : Unit area includes A/C ledge &/or terrace &/or balcony &/or roof terrace where applicable. All plans are subject to amendments as approved by the relevant authorities.
* *The balcony shall not be enclosed. Only approved balcony screens are to be used. For an illustration of the approved balcony screen, please refer to page 42 of this brochure."

TYPE B4

2 bedroom
60 sqm

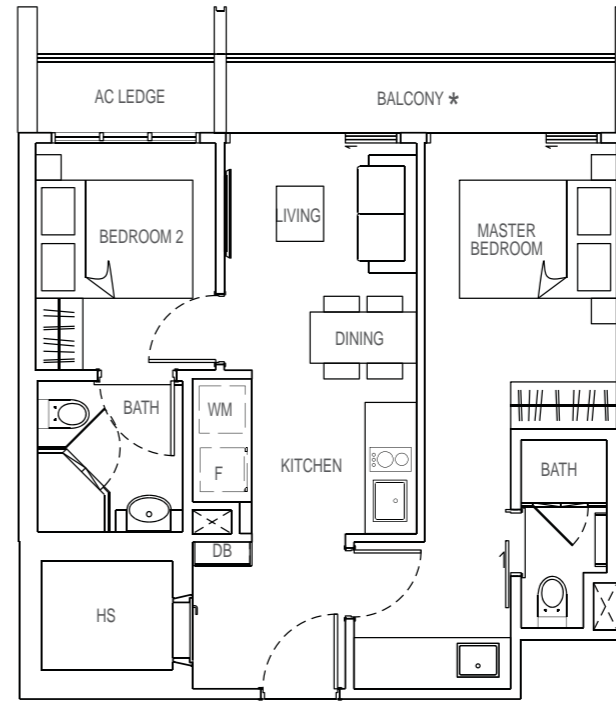
#03-10



TYPE B6

2 bedroom
60 sqm

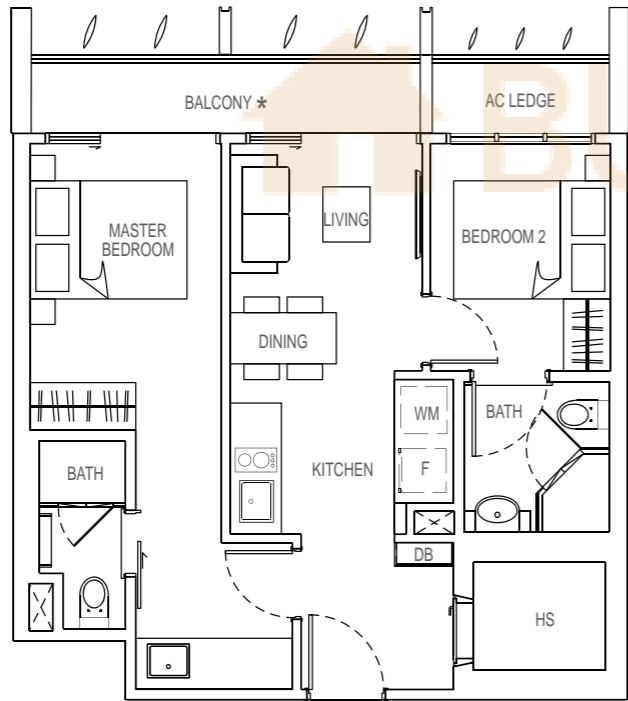
#03-11



TYPE B5

2 bedroom
60 sqm

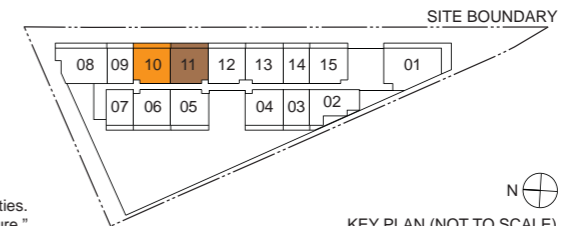
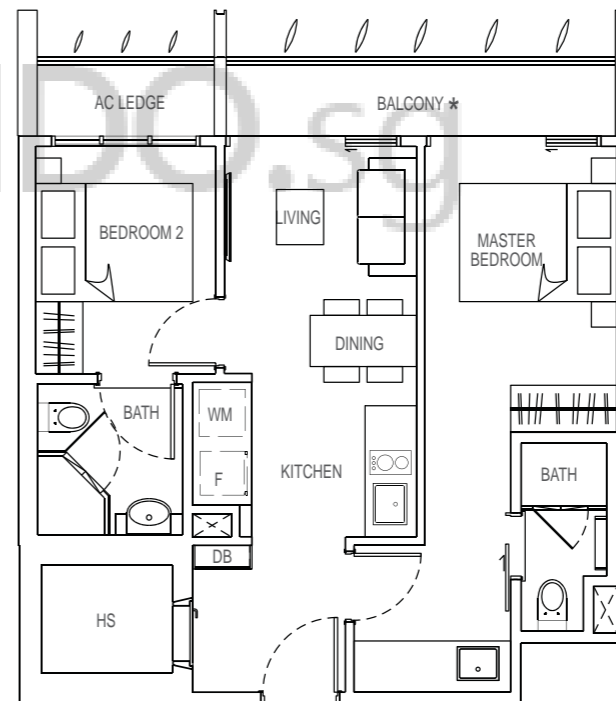
- #04-10
- #05-10
- #06-10
- #07-10
- #08-10
- #09-10



TYPE B7

2 bedroom
60 sqm

- #04-11
- #05-11
- #06-11
- #07-11
- #08-11
- #09-11

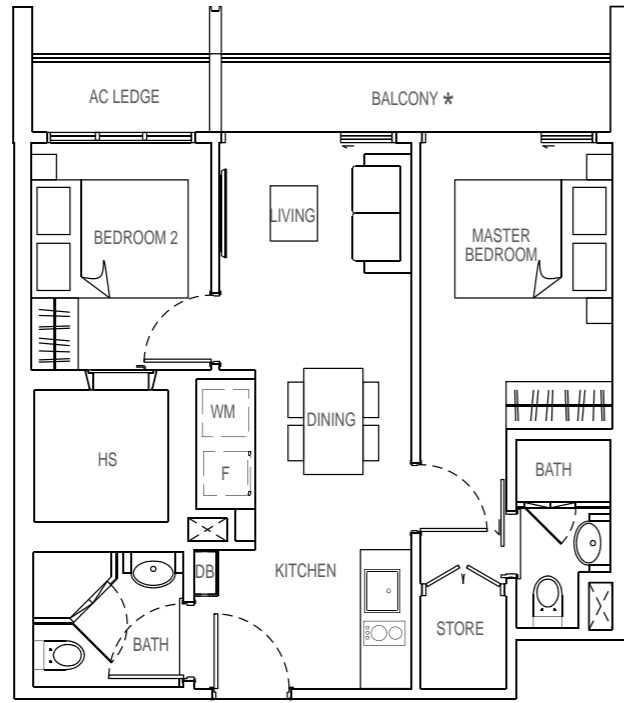


Note : Unit area includes A/C ledge &/or terrace &/or balcony &/or roof terrace where applicable. All plans are subject to amendments as approved by the relevant authorities.
* "The balcony shall not be enclosed. Only approved balcony screens are to be used. For an illustration of the approved balcony screen, please refer to page 42 of this brochure."

TYPE B8

2 bedroom
60 sqm

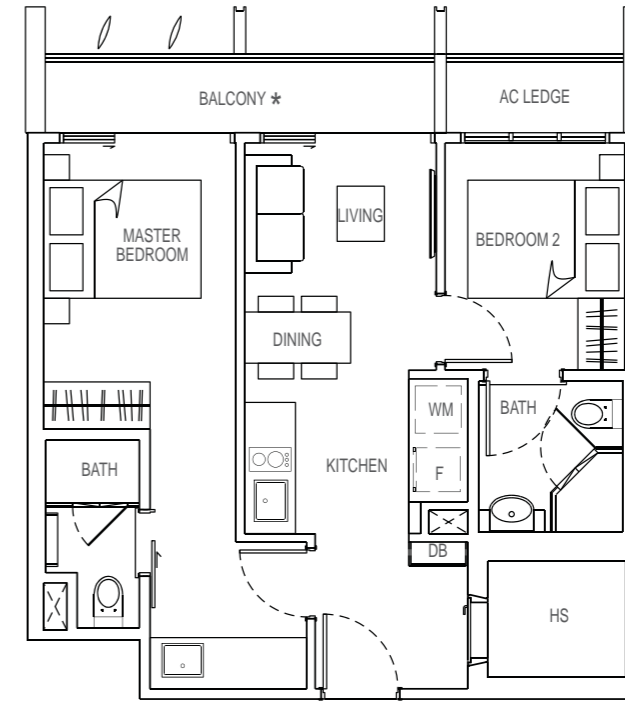
#03-12



TYPE B10

2 bedroom
60 sqm

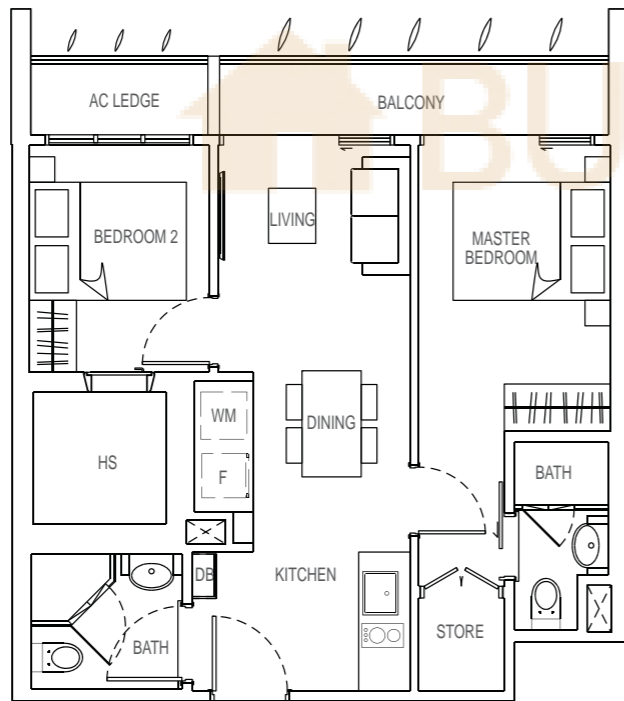
#03-13



TYPE B9

2 bedroom
60 sqm

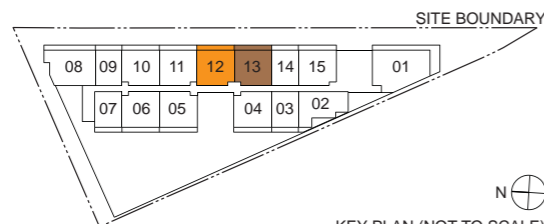
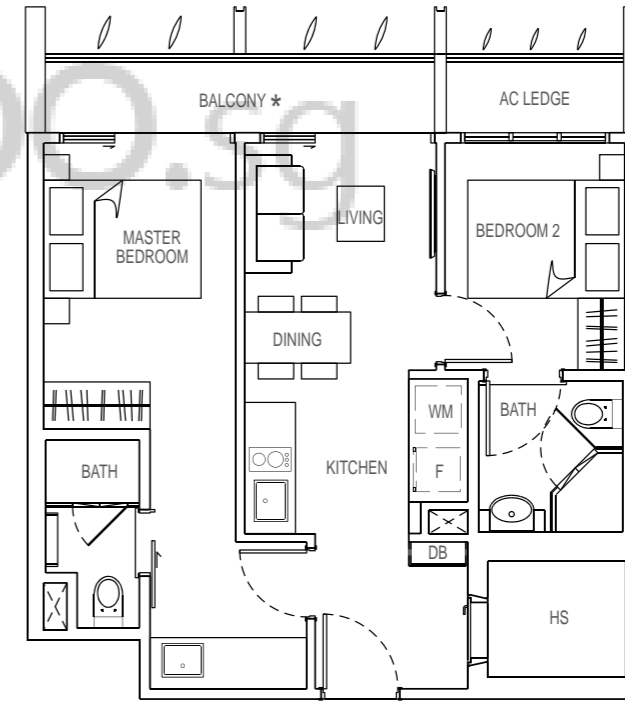
- #04-12
- #05-12
- #06-12
- #07-12
- #08-12
- #09-12
- #10-12



TYPE B11

2 bedroom
60 sqm

- #04-13
- #05-13
- #06-13
- #07-13
- #08-13
- #09-13



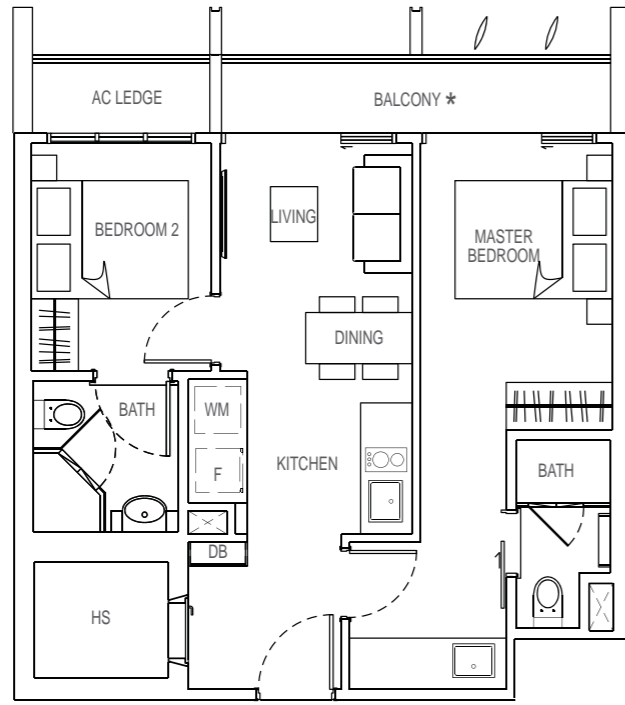
KEY PLAN (NOT TO SCALE)

Note : Unit area includes A/C ledge &/or terrace &/or balcony &/or roof terrace where applicable. All plans are subject to amendments as approved by the relevant authorities.
*The balcony shall not be enclosed. Only approved balcony screens are to be used. For an illustration of the approved balcony screen, please refer to page 42 of this brochure."

TYPE B12

2 bedroom
60 sqm

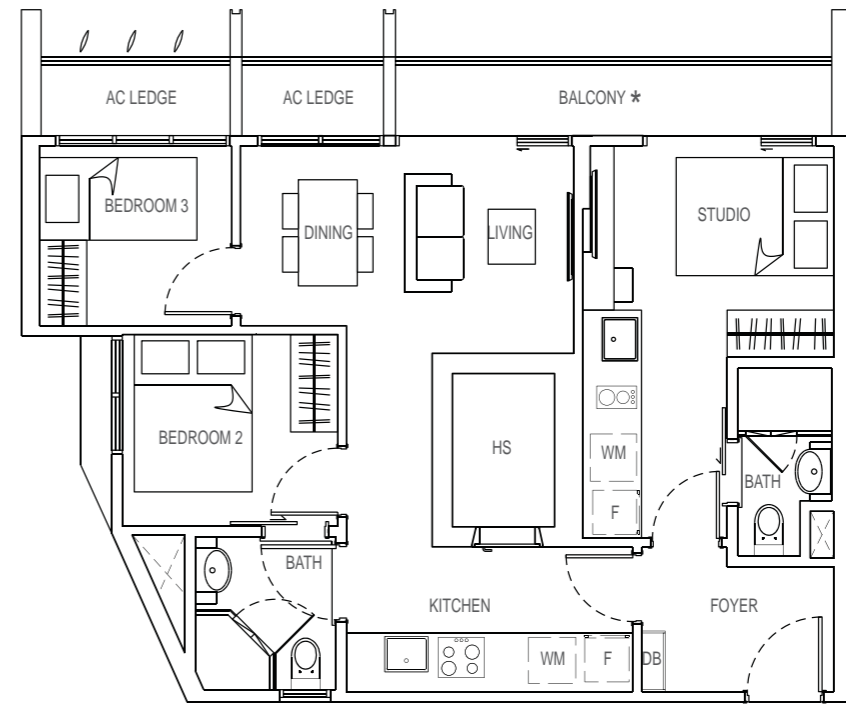
#03-15



TYPE C1-DK

3 bedroom - dual key
76 sqm

#03-08



TYPE B13

2 bedroom
60 sqm

#04-15

#05-15

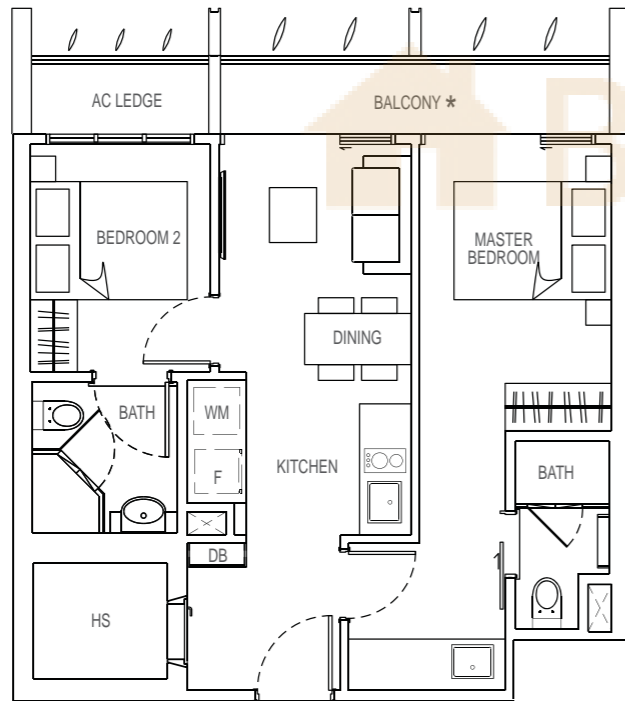
#06-15

#07-15

#08-15

#09-15

#10-15



TYPE C2-DK

3 bedroom - dual key
76 sqm

#04-08

#05-08

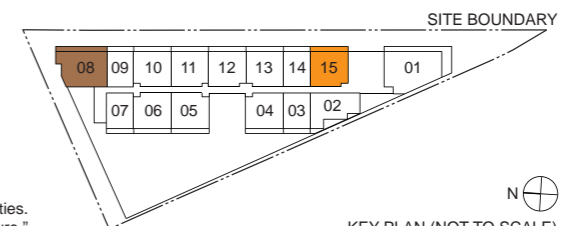
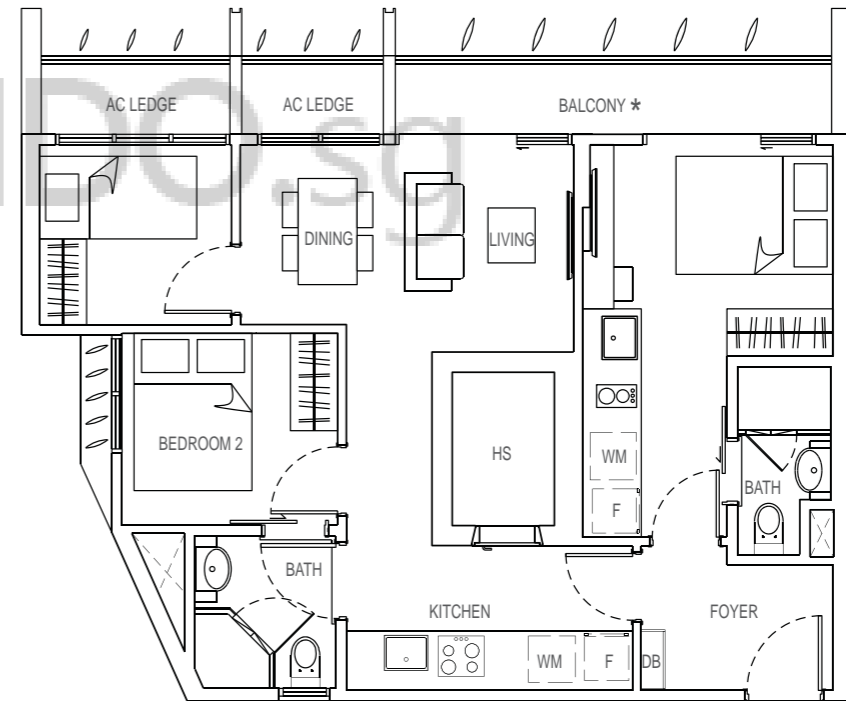
#06-08

#07-08

#08-08

#09-08

#10-08



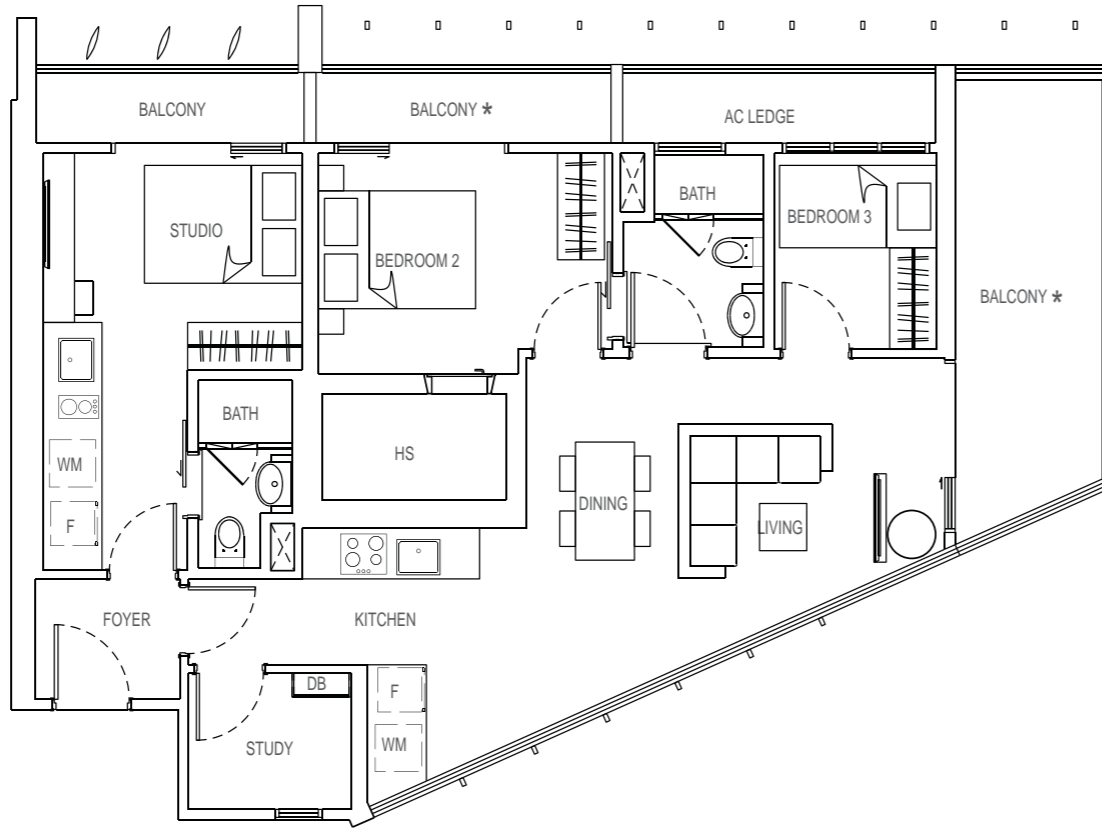
Note : Unit area includes A/C ledge &/or terrace &/or balcony &/or roof terrace where applicable. All plans are subject to amendments as approved by the relevant authorities.
The balcony shall not be enclosed. Only approved balcony screens are to be used. For an illustration of the approved balcony screen, please refer to page 42 of this brochure.

KEY PLAN (NOT TO SCALE)

TYPE C3-DK

3 bedroom - dual key
108 sqm

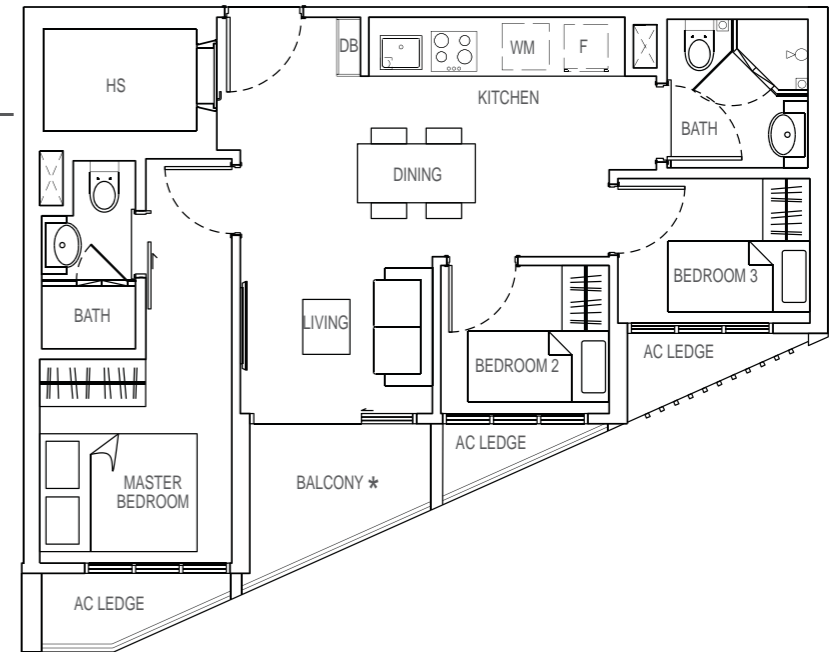
#03-01



TYPE C5

3 bedroom
62 sqm

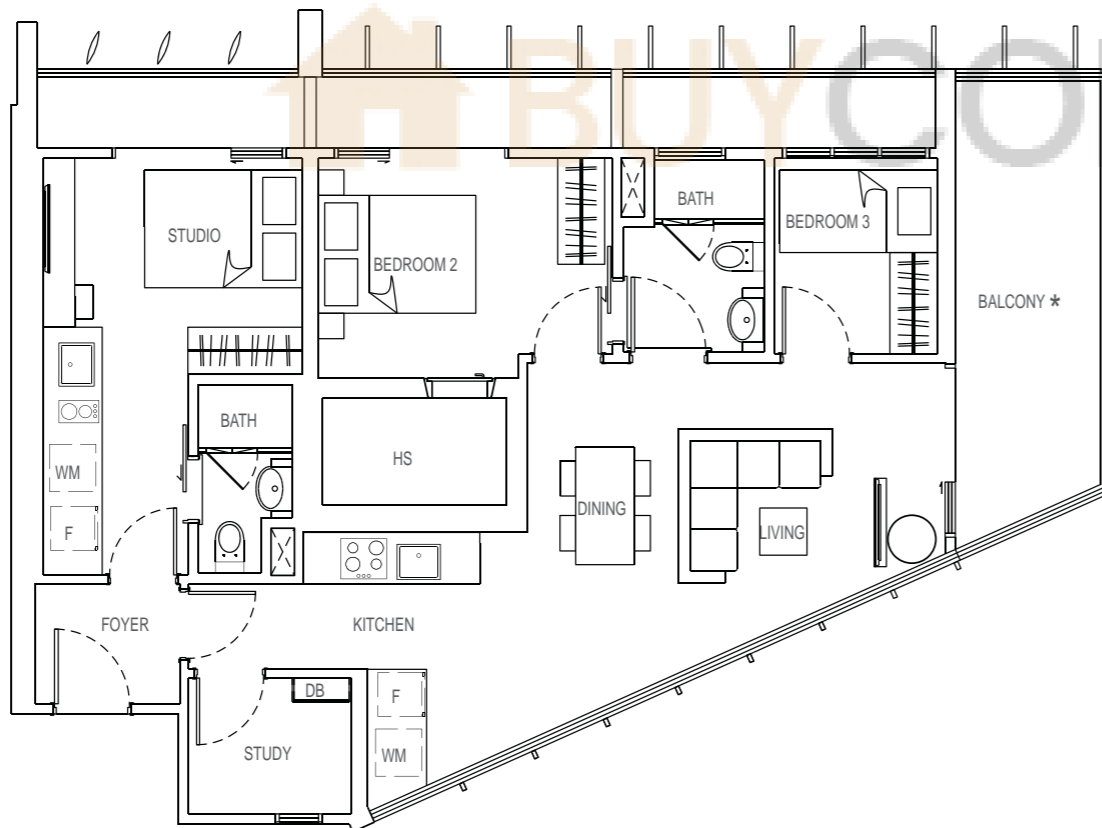
- #04-02
- #05-02
- #06-02
- #07-02
- #08-02
- #09-02
- #10-02



TYPE C4-DK

3 bedroom - dual key
108 sqm

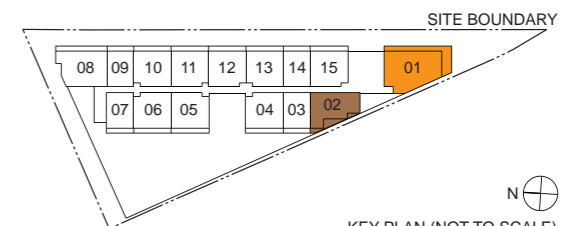
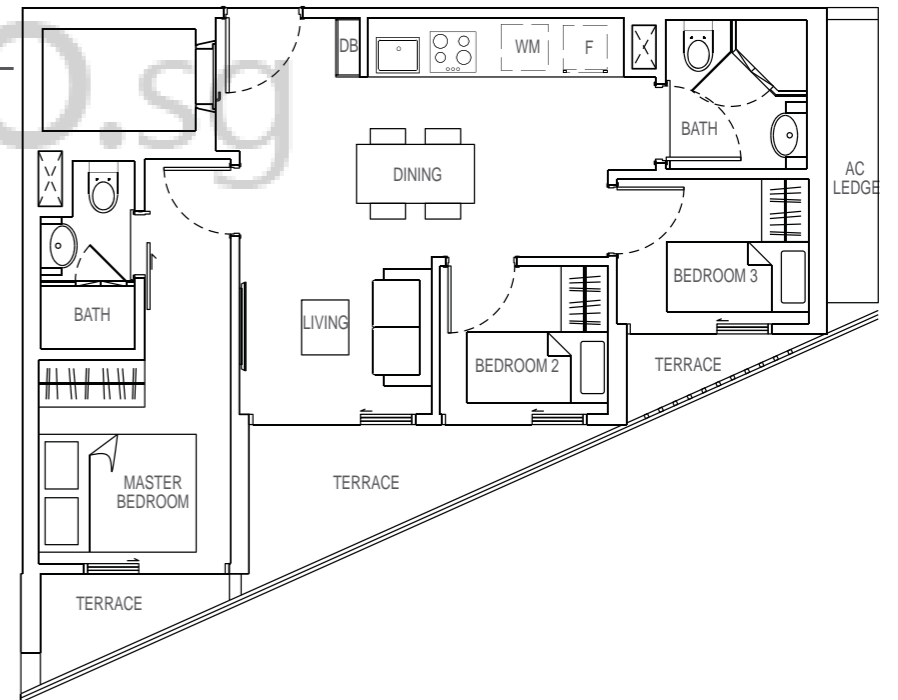
- #04-01
- #05-01
- #06-01
- #07-01
- #08-01
- #09-01
- #10-01



TYPE C5-T

3 bedroom
66 sqm

#03-02



Note : Unit area includes A/C ledge &/or terrace &/or balcony &/or roof terrace where applicable. All plans are subject to amendments as approved by the relevant authorities.
*The balcony shall not be enclosed. Only approved balcony screens are to be used. For an illustration of the approved balcony screen, please refer to page 42 of this brochure."

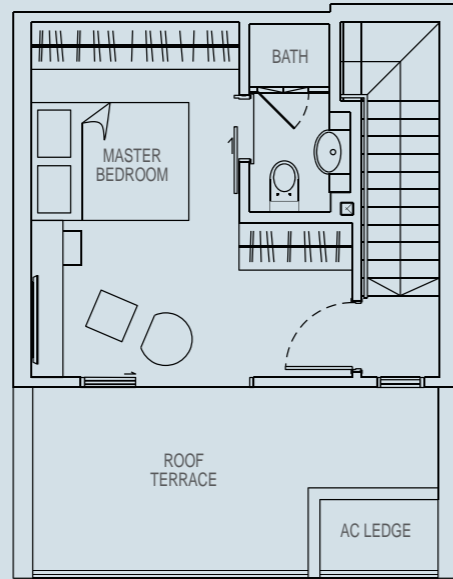


KEY PLAN (NOT TO SCALE)

TYPE PH1

2 bedroom
81 sqm

#10-03

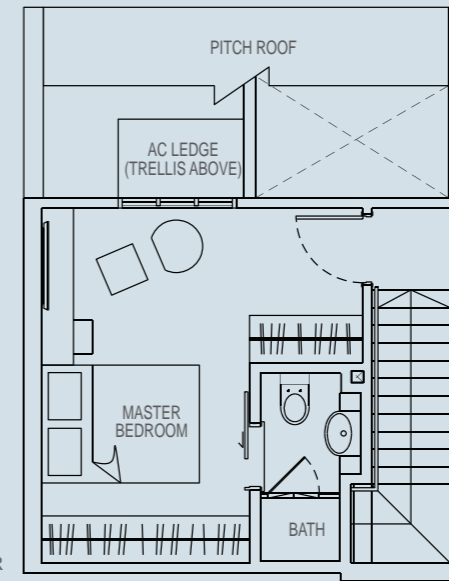


UPPER FLOOR

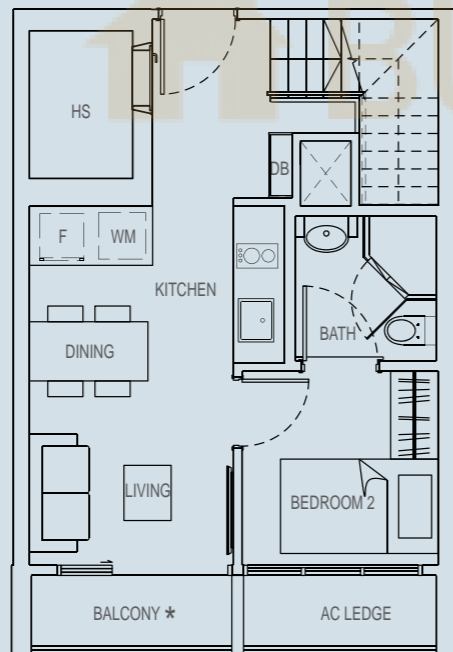
TYPE PH2

2 bedroom
70 sqm

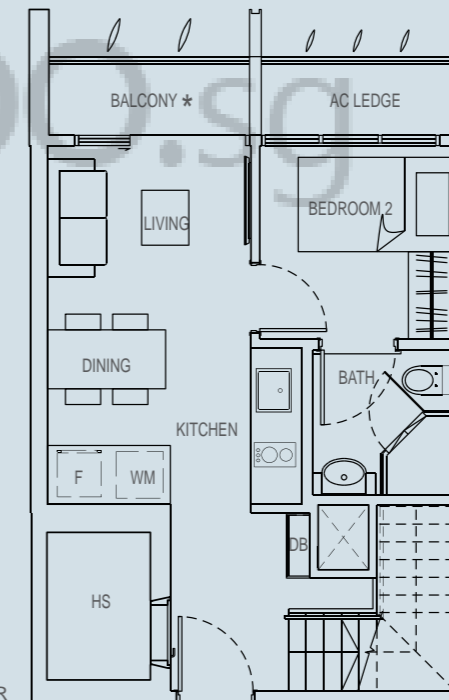
#10-14



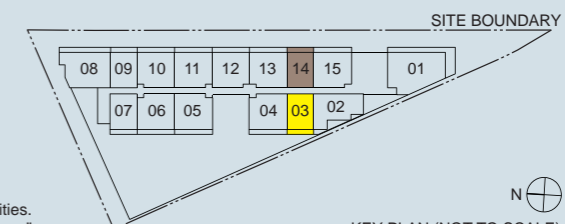
UPPER FLOOR



LOWER FLOOR



LOWER FLOOR

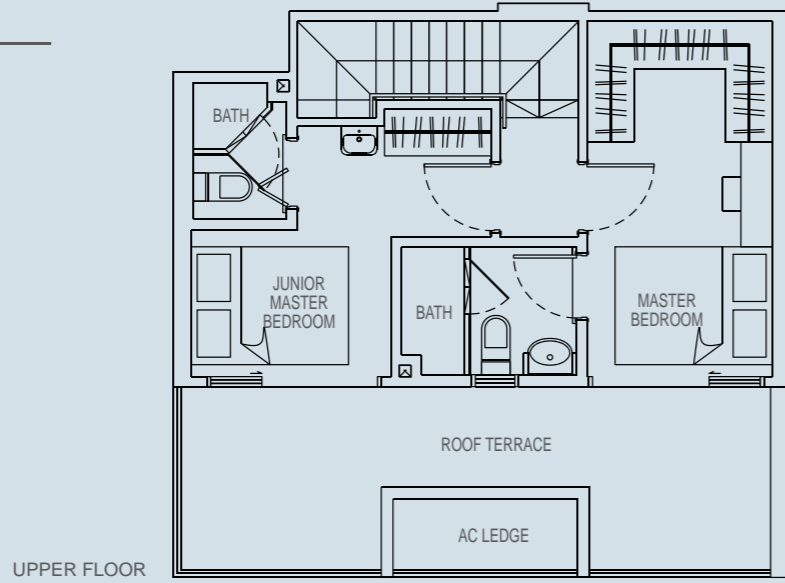


Note : Unit area includes A/C ledge &/or terrace &/or balcony &/or roof terrace where applicable. All plans are subject to amendments as approved by the relevant authorities.
*The balcony shall not be enclosed. Only approved balcony screens are to be used. For an illustration of the approved balcony screen, please refer to page 42 of this brochure."

TYPE PH3 (MIRROR)

4 bedroom
108 sqm

#10-04

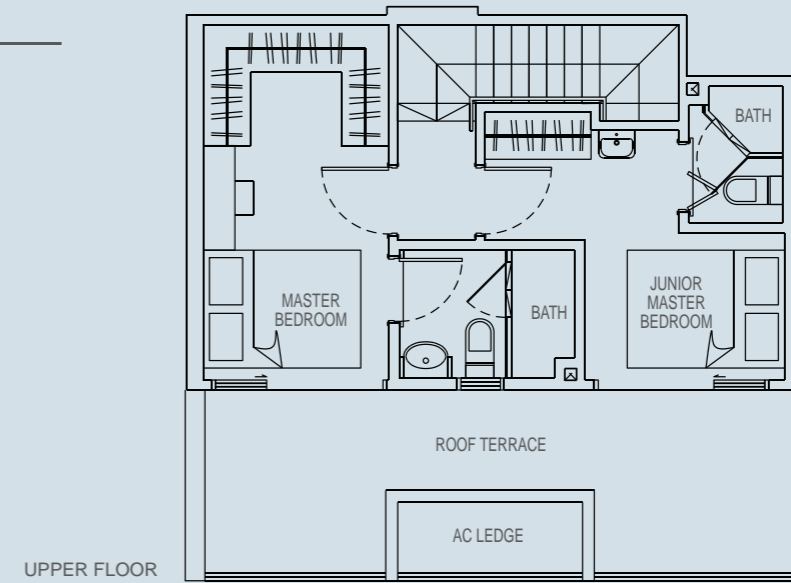


UPPER FLOOR

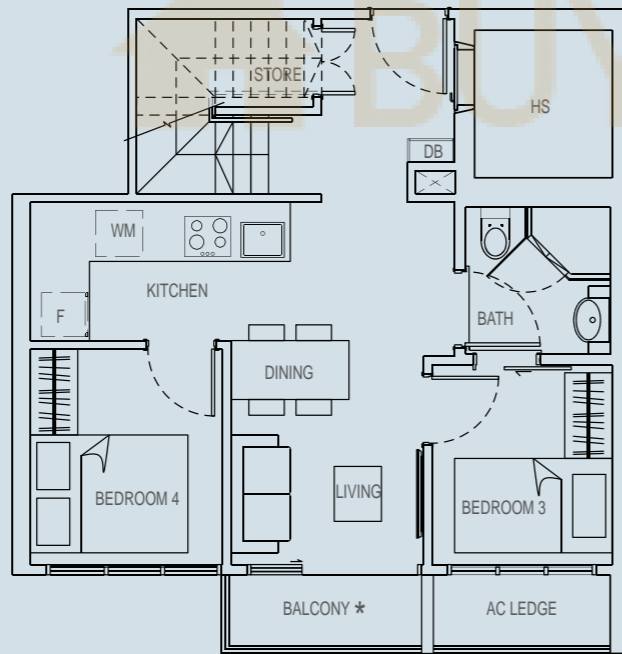
TYPE PH3

4 bedroom
108 sqm

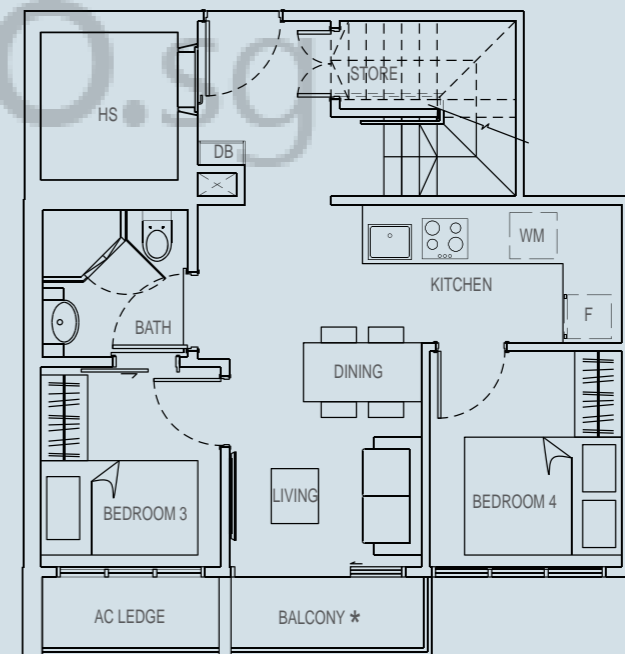
#10-05



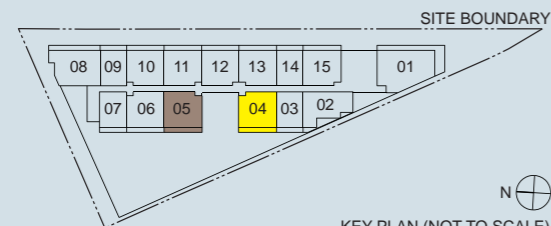
UPPER FLOOR



LOWER FLOOR



LOWER FLOOR



KEY PLAN (NOT TO SCALE)

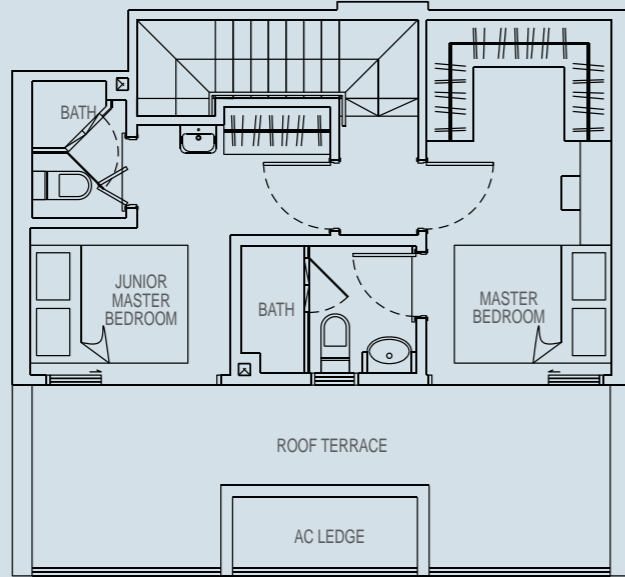
Note : Unit area includes A/C ledge &/or terrace &/or balcony &/or roof terrace where applicable. All plans are subject to amendments as approved by the relevant authorities.
* *The balcony shall not be enclosed. Only approved balcony screens are to be used. For an illustration of the approved balcony screen, please refer to page 42 of this brochure."

TYPE PH4

4 bedroom
111 sqm

#10-06

UPPER FLOOR

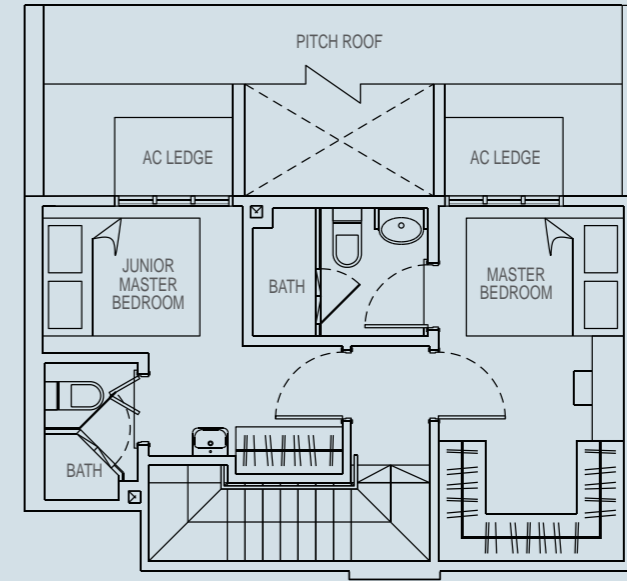


TYPE PH5

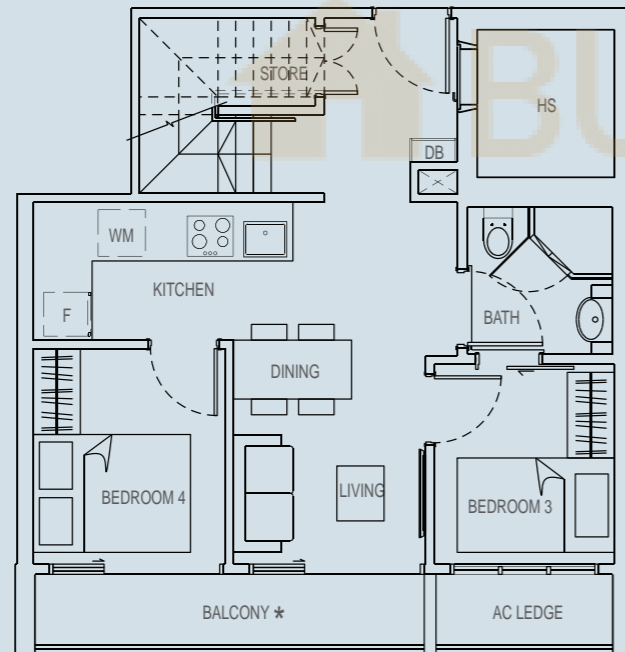
4 bedroom
95 sqm

#10-10
#10-13

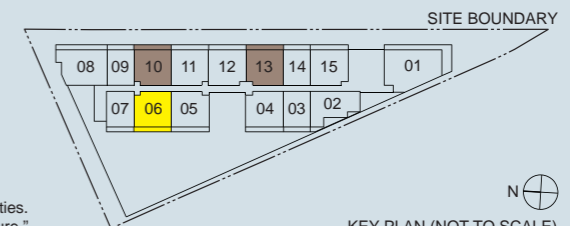
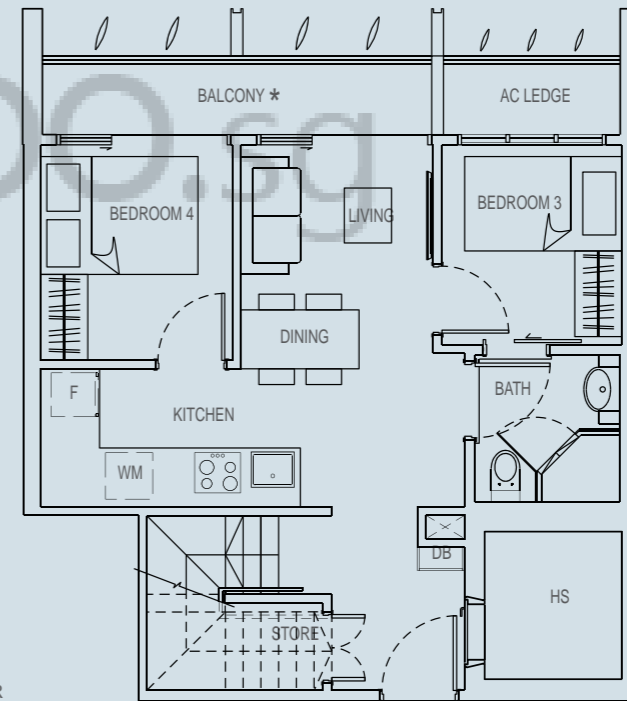
UPPER FLOOR



LOWER FLOOR



LOWER FLOOR



Note : Unit area includes A/C ledge &/or terrace &/or balcony &/or roof terrace where applicable. All plans are subject to amendments as approved by the relevant authorities.
* *The balcony shall not be enclosed. Only approved balcony screens are to be used. For an illustration of the approved balcony screen, please refer to page 42 of this brochure.*

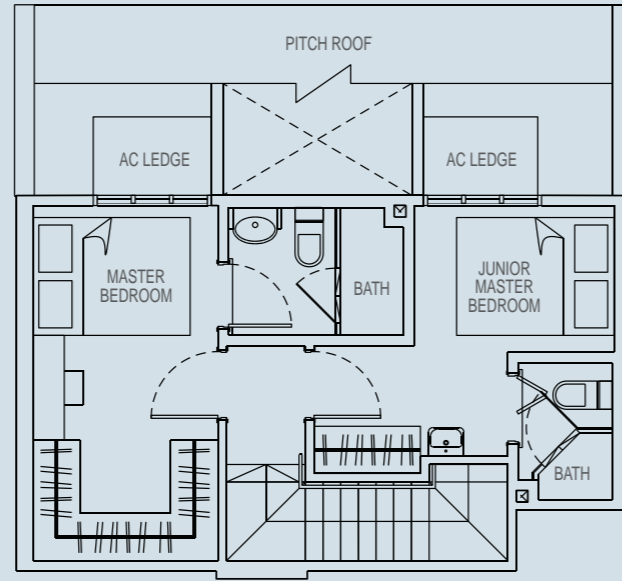
KEY PLAN (NOT TO SCALE)

TYPE PH6

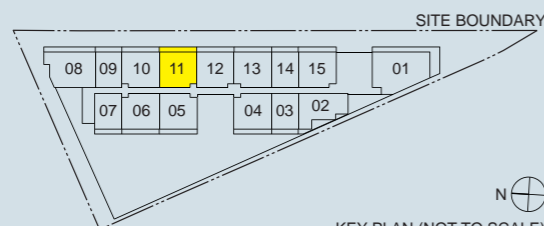
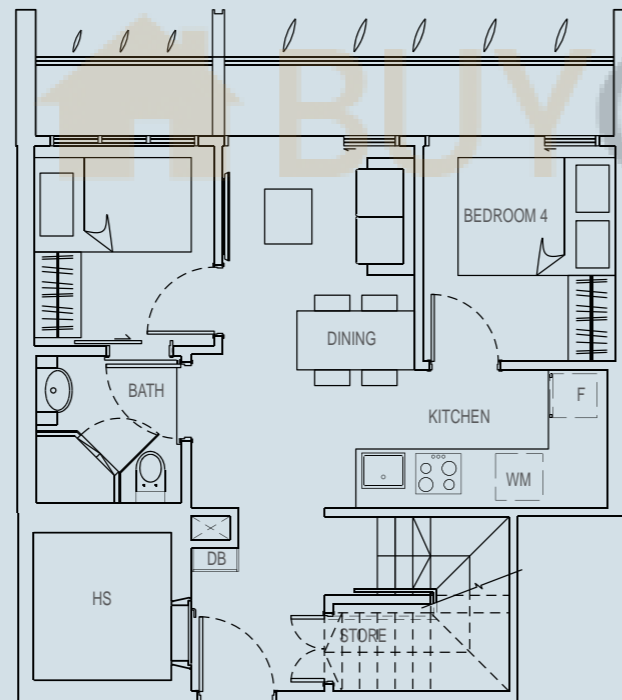
4 bedroom
95 sqm

#10-11

UPPER FLOOR



LOWER FLOOR



KEY PLAN (NOT TO SCALE)



Note : Unit area includes A/C ledge &/or terrace &/or balcony &/or roof terrace where applicable. All plans are subject to amendments as approved by the relevant authorities.
* "The balcony shall not be enclosed. Only approved balcony screens are to be used. For an illustration of the approved balcony screen, please refer to page 42 of this brochure."

Balcony screens shall not be provided by the developer.
Buyers may install screens that are in accordance with the URA approved design as shown in the below illustration.

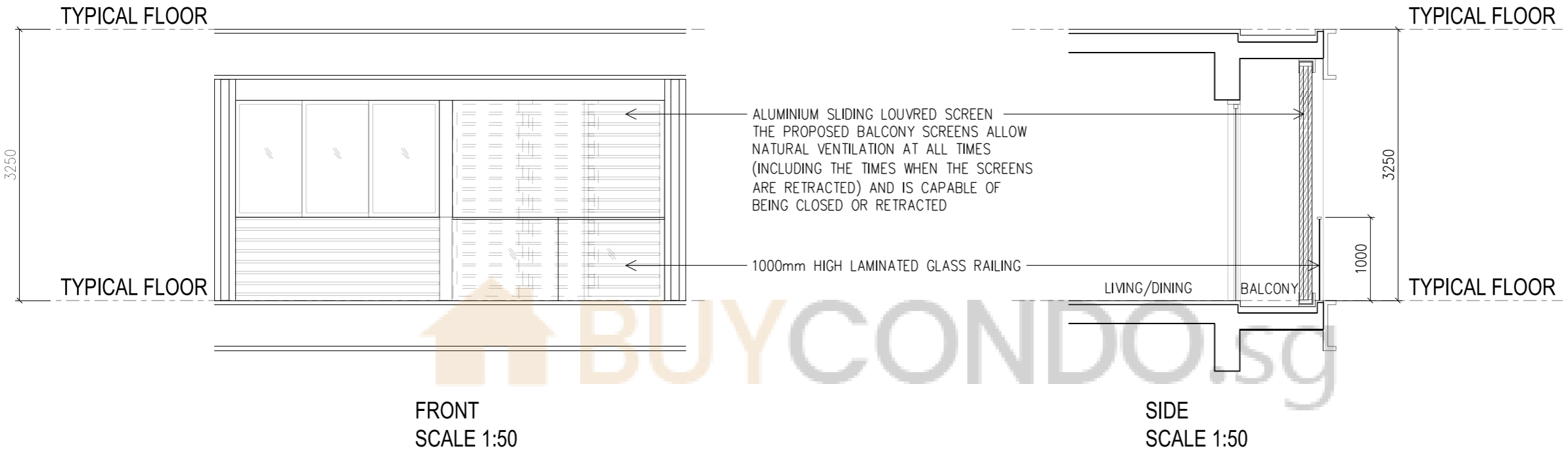


Illustration of typical balcony screen approved by URA.