

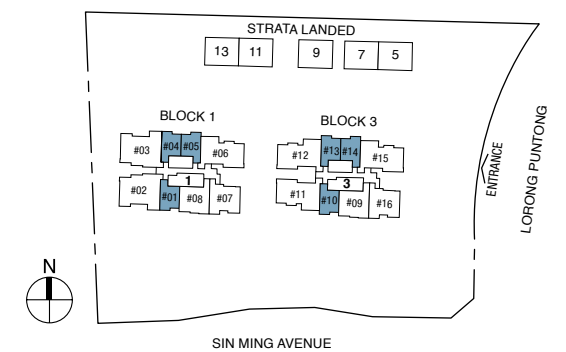
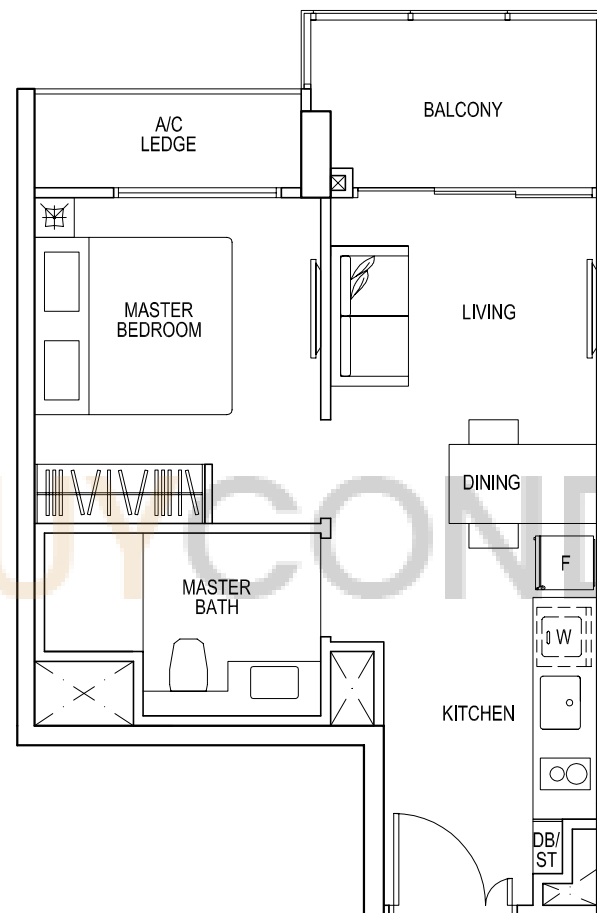
## Type A1

STRATA SFA : 43 sqm

#03-01 to #18-01, #03-04 to #18-04 (mirror),

#03-05 to #18-05, #02-10 to #19-10,

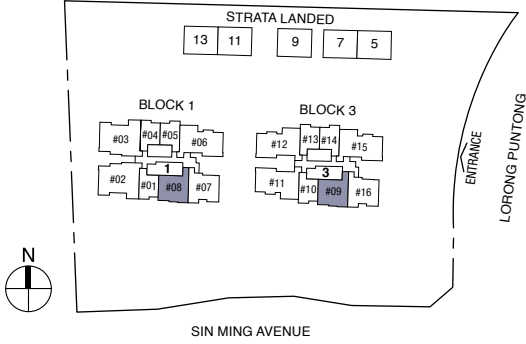
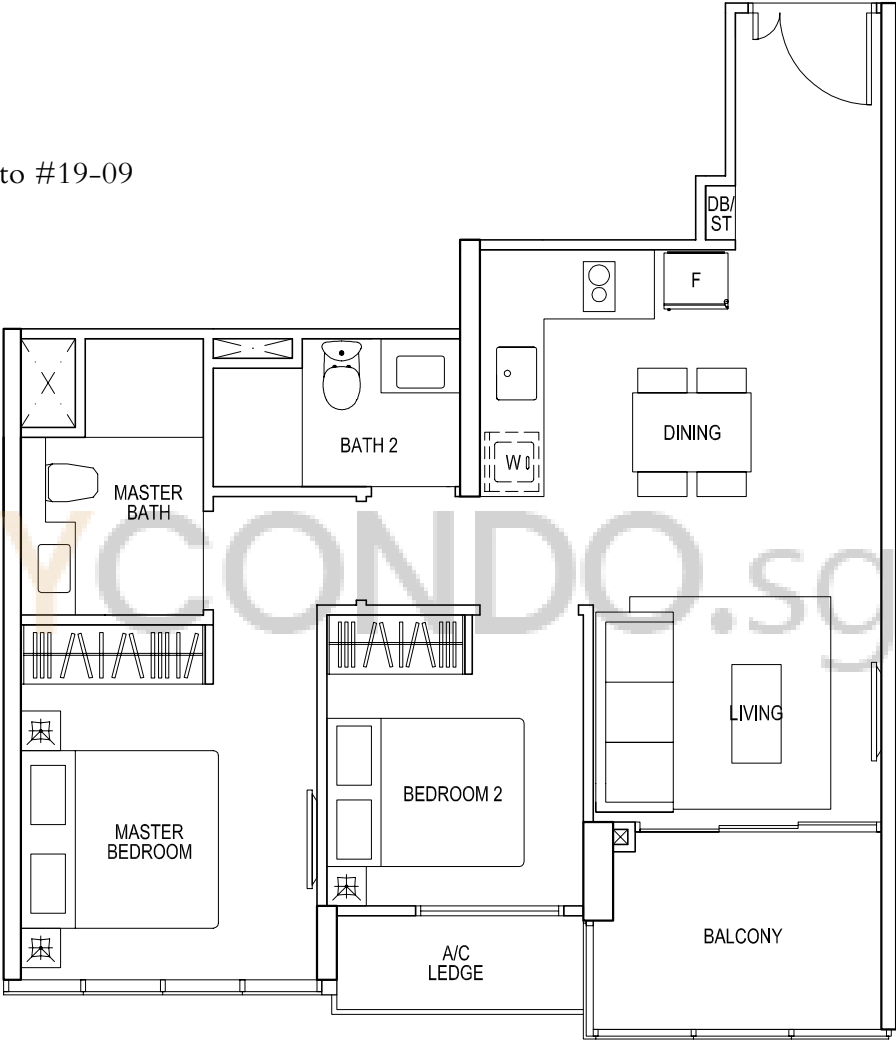
#02-13 to #18-13 (mirror), #02-14 to #18-14



# 2-BEDROOM

## Type B1

STRATA SFA : 68 sqm  
#03-08 to #19-08, #02-09 to #19-09

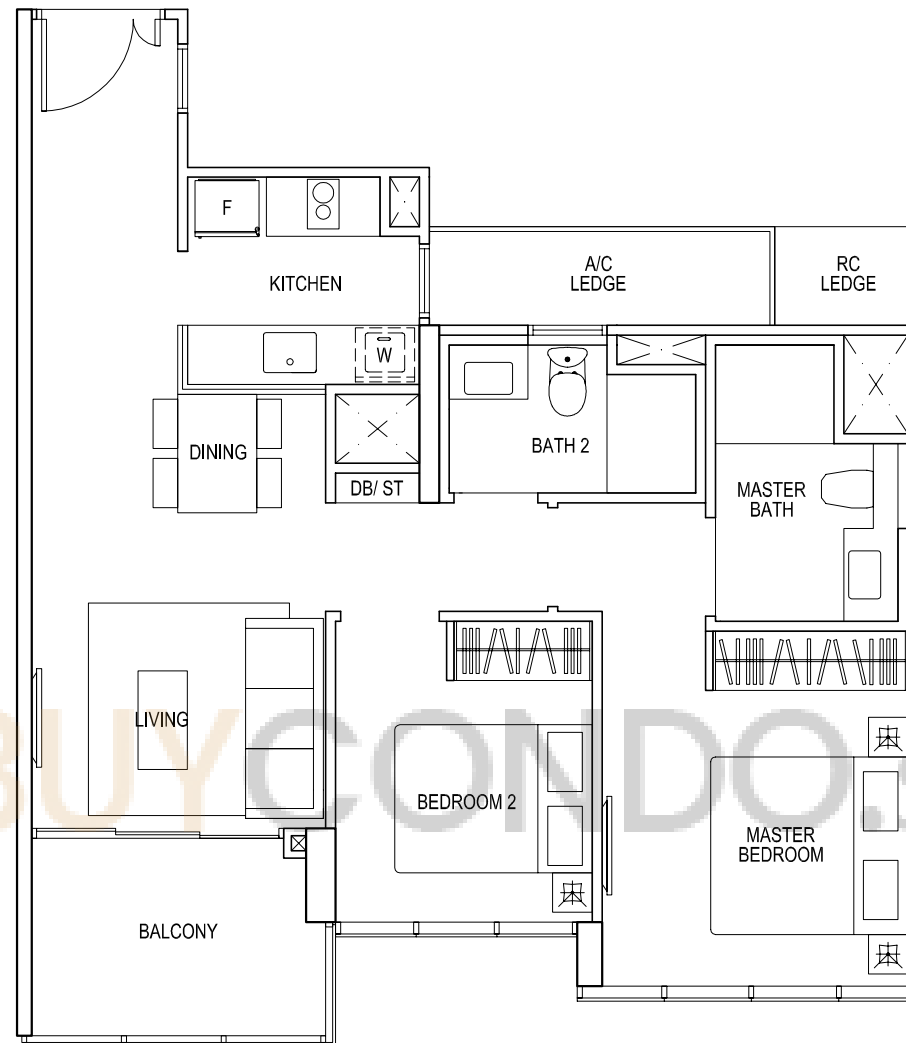


Area includes A/C ledge, balcony, pes and void (where applicable). The above plans and illustrations are subject to changes as may be required and approved by the relevant authorities. The balcony shall not be enclosed unless with the approved screen. For an illustration of the approved balcony screen, please refer to the diagram annexed hereto as "annexure 1".

# 2-BEDROOM

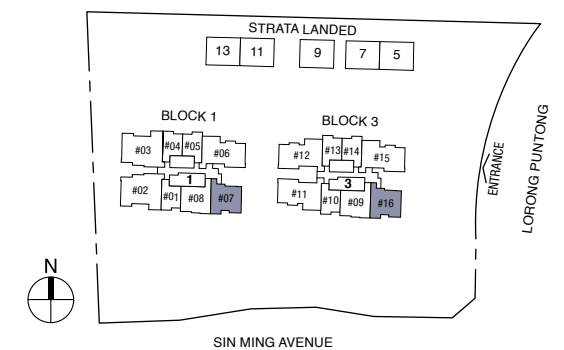
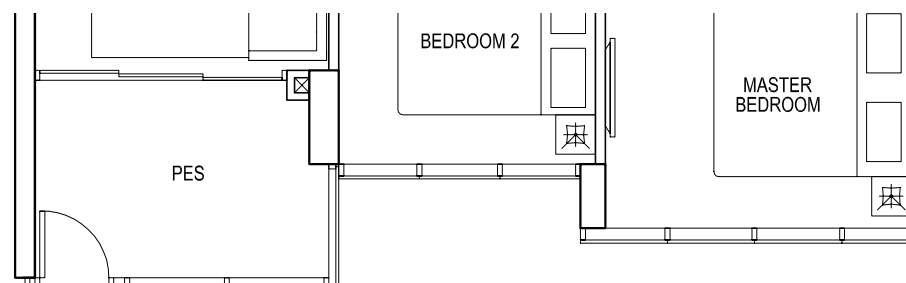
## Type B2

STRATA SFA : 71 sqm  
#03-07 to #19-07, #02-16 to #19-16



## Type B2G

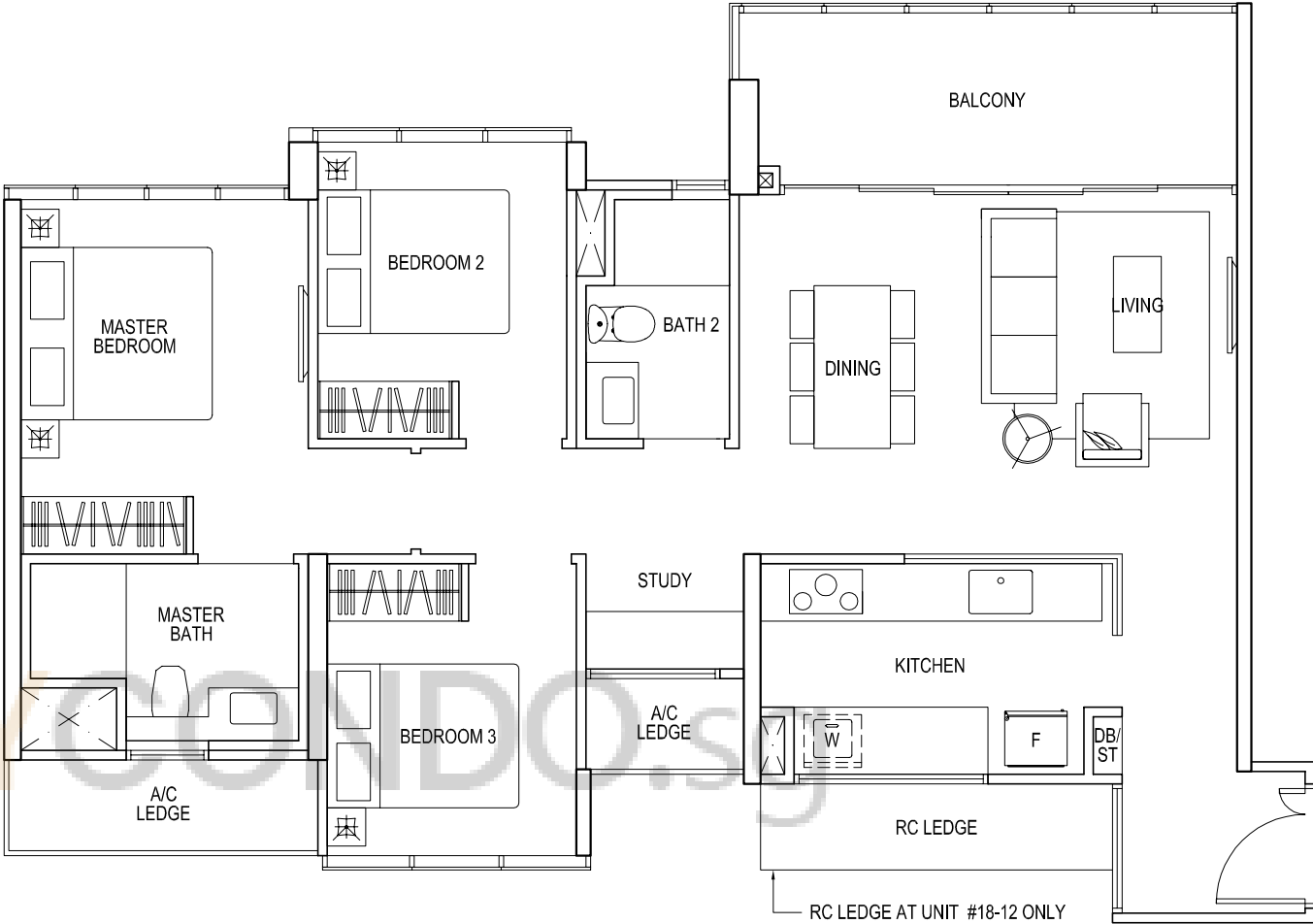
STRATA SFA : 71 sqm  
#02-07, #01-16



# 3-BEDROOM

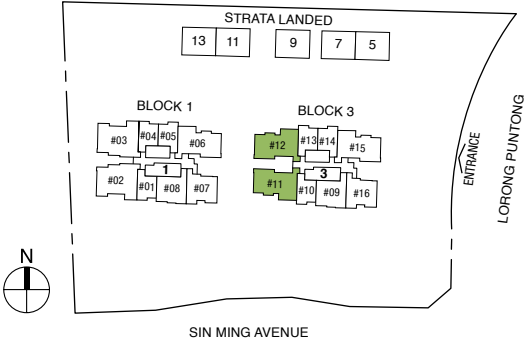
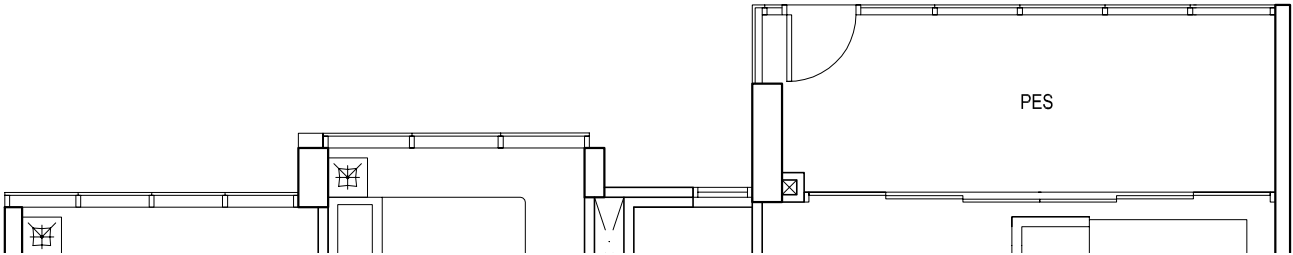
## Type C1

STRATA SFA : 98 sqm  
 #02-12 to #18-12,  
 #02-11 to #19-11 (mirror)



## Type C1G

STRATA SFA : 98 sqm  
 #01-12, #01-11 (mirror)



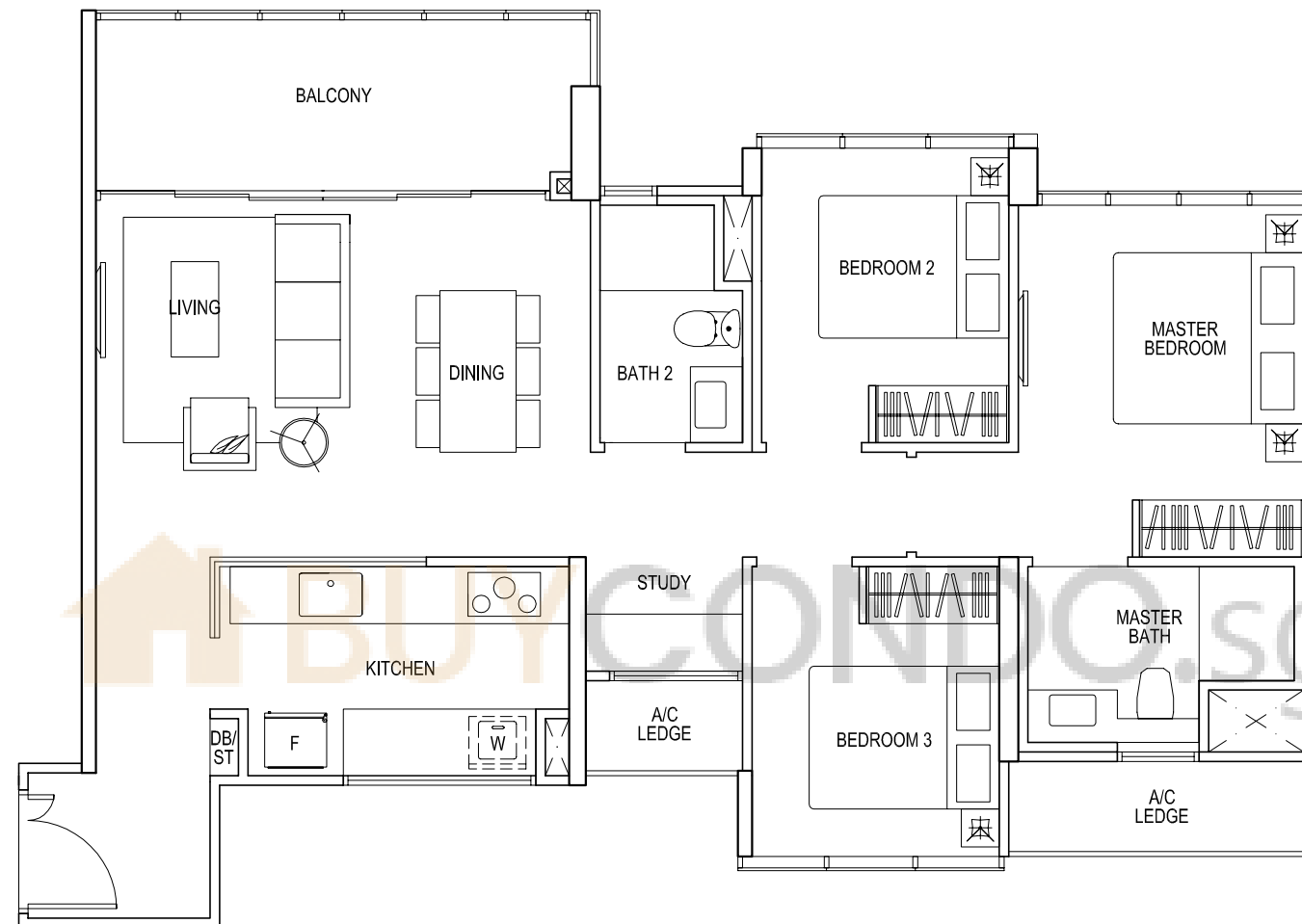
Area includes A/C ledge, balcony, pes and void (where applicable). The above plans and illustrations are subject to changes as may be required and approved by the relevant authorities. The balcony shall not be enclosed unless with the approved screen. For an illustration of the approved balcony screen, please refer to the diagram annexed hereto as "annexure 1".

## Type C1a

STRATA SFA : 98 sqm

#03-06 to #18-06,

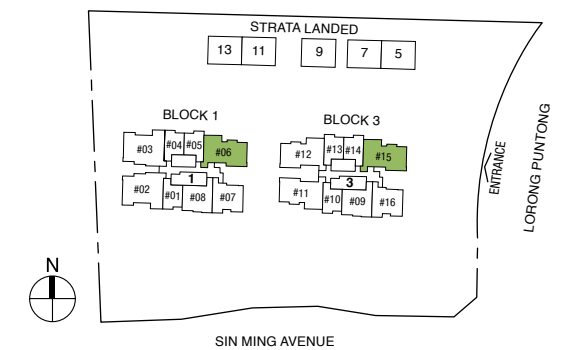
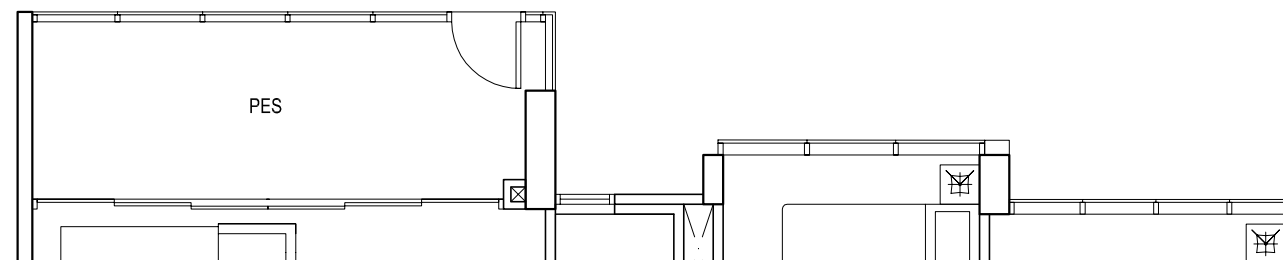
#02-15 to #18-15



## Type C1aG

STRATA SFA : 98 sqm

#02-06, #01-15

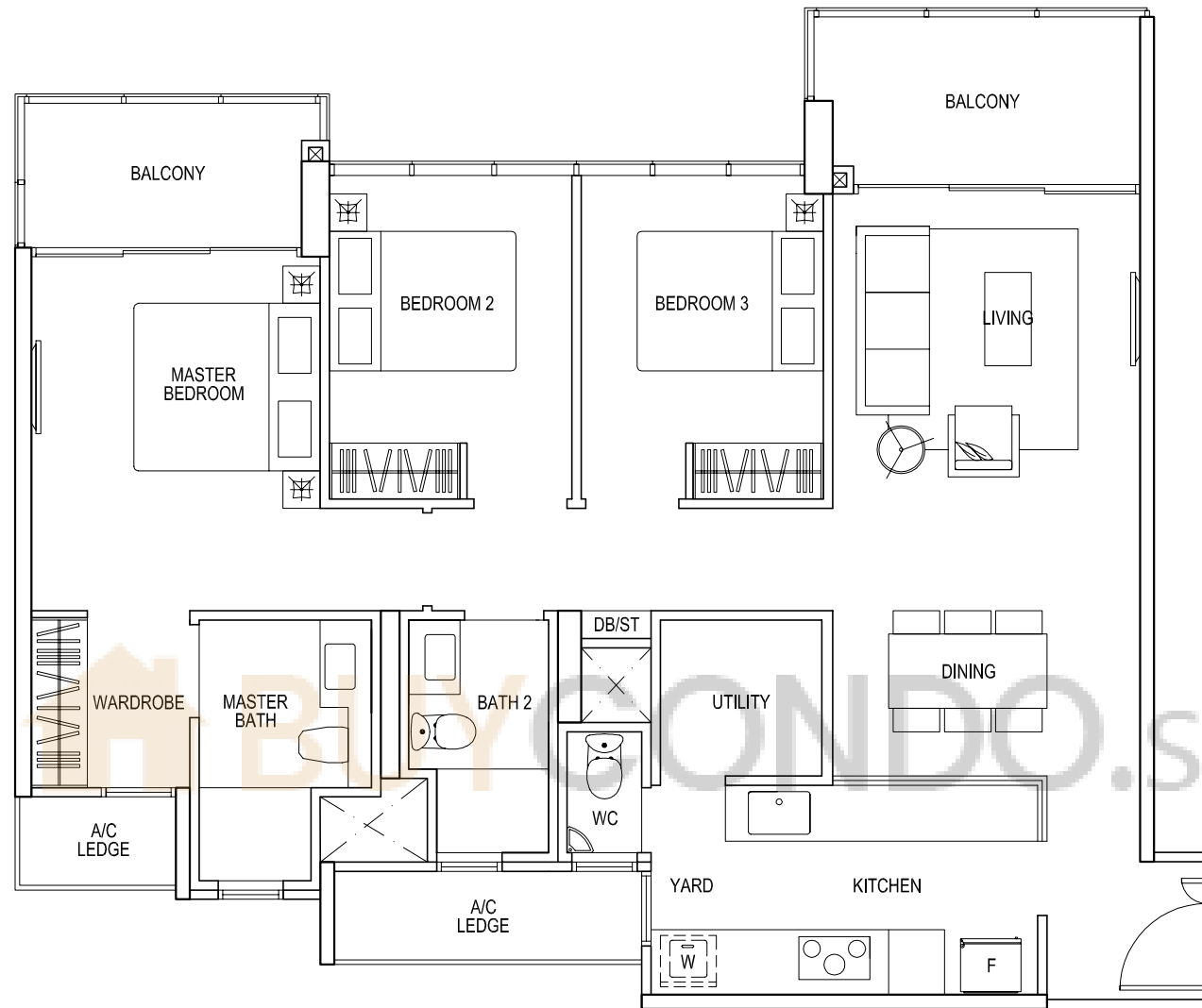




# 3-BEDROOM PREMIUM

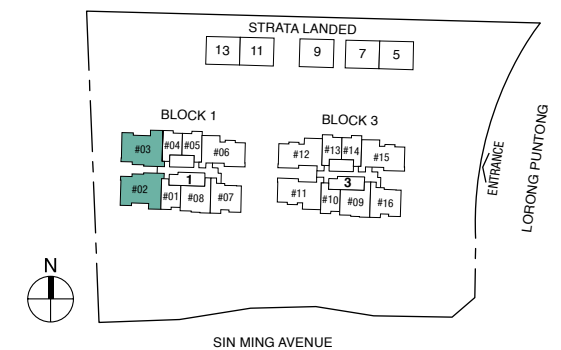
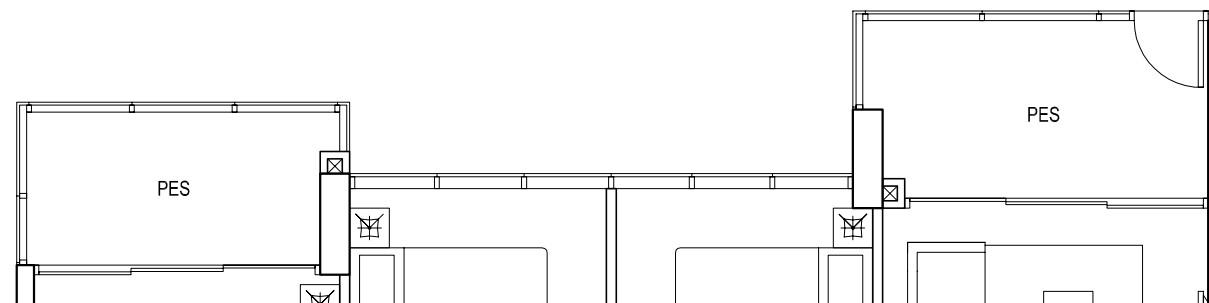
## Type C2

STRATA SFA : 111 sqm  
 #03-03 to #18-03,  
 #03-02 to #18-02 (mirror)



## Type C2G

STRATA SFA : 111 sqm  
 #02-03, #02-02 (mirror)



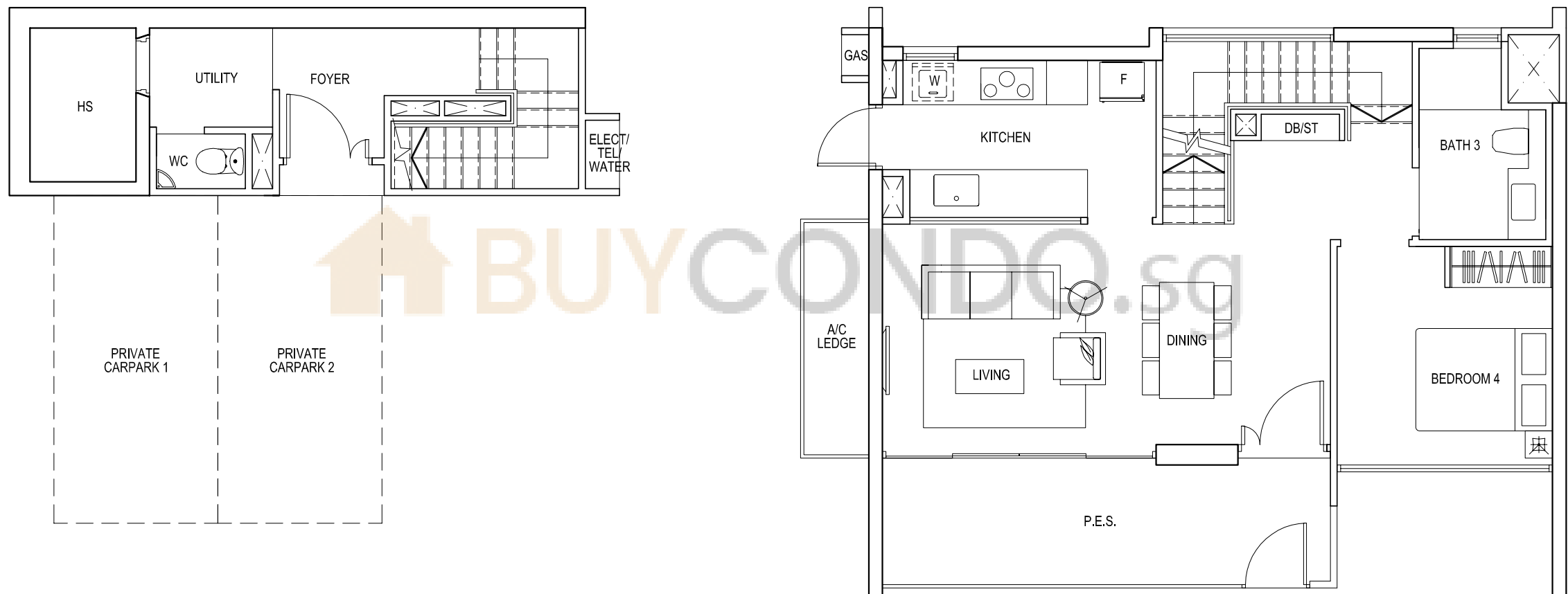
# 4-BEDROOM STRATA - LANDED

## Type D1 SL

STRATA SFA : 189 sqm

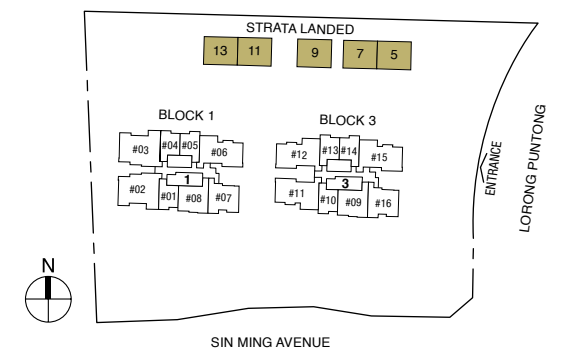
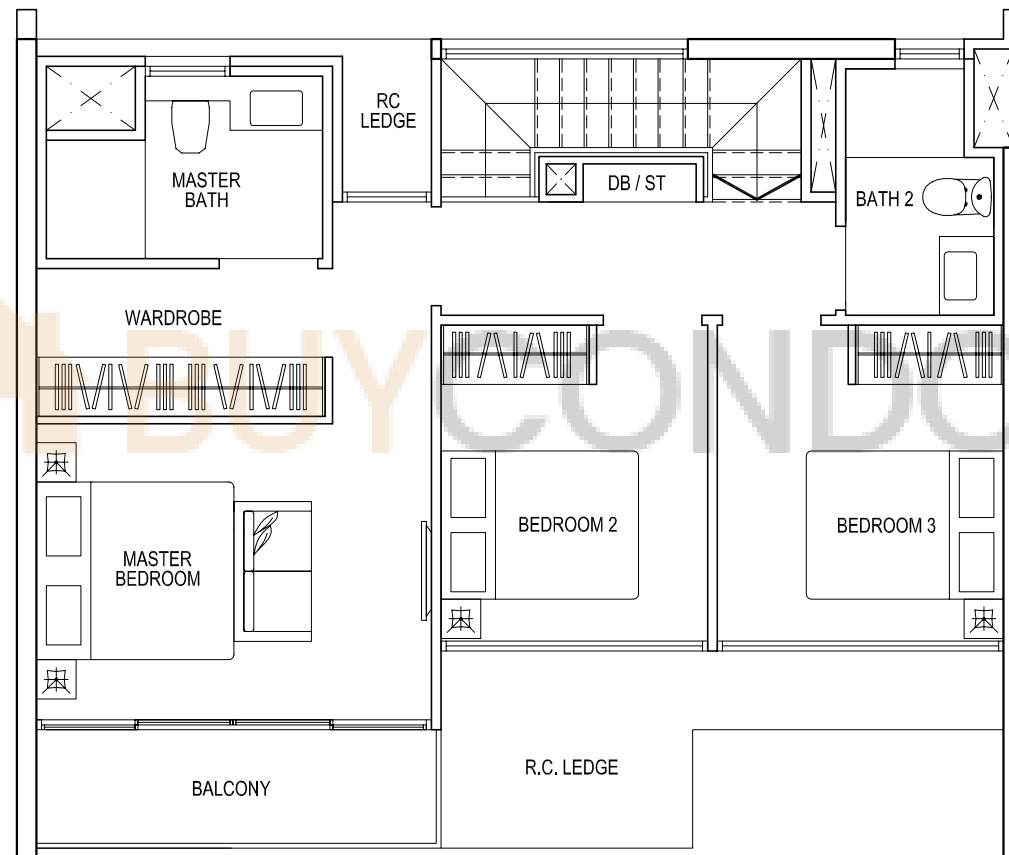
No. 07, No. 13,

No. 05, No. 09, No. 11 (mirror)





# 4-BEDROOM STRATA - LANDED

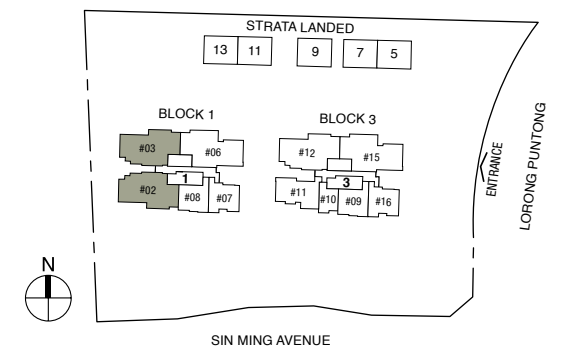
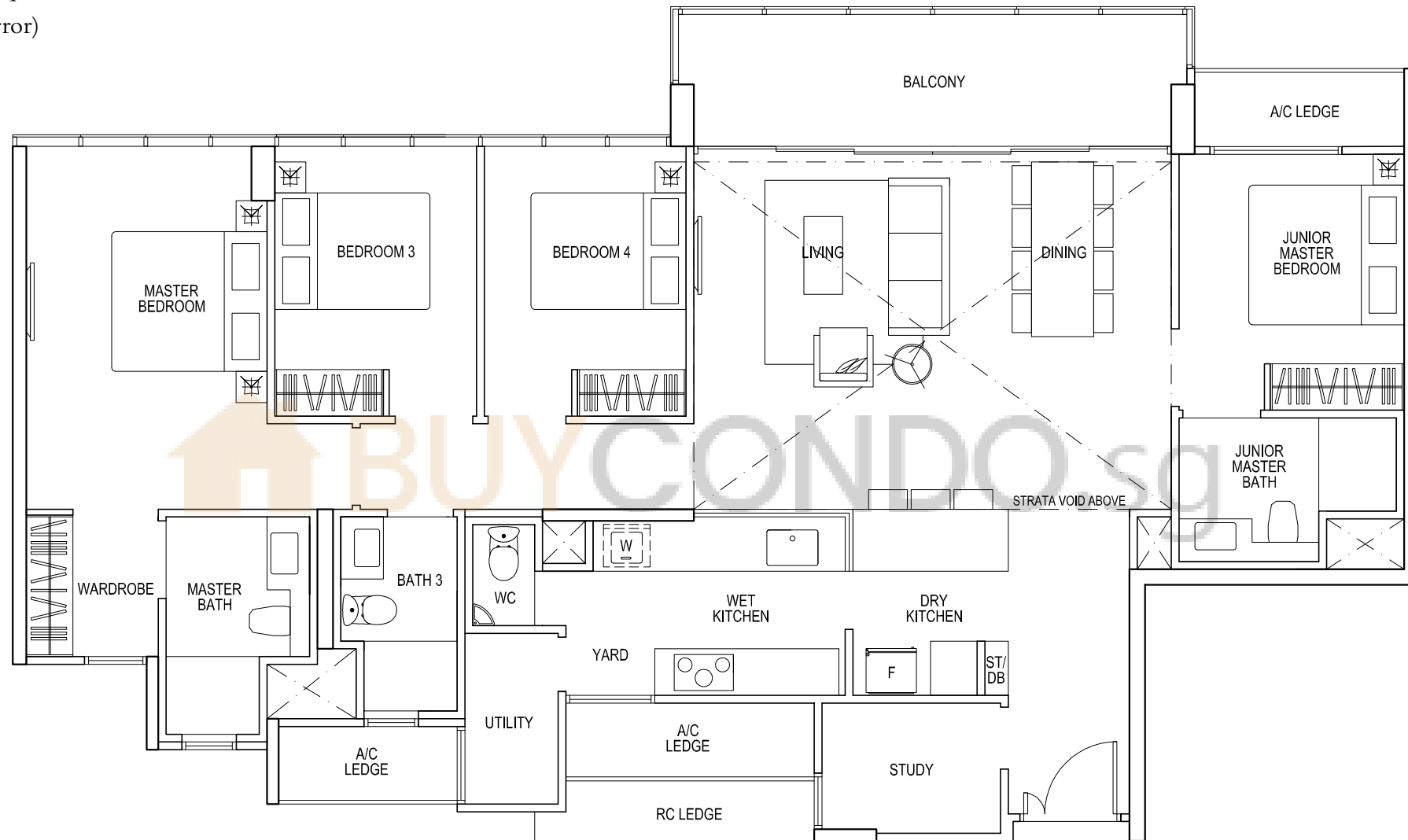




# 4-BEDROOM + STUDY PENTHOUSE

## Type PH1

STRATA SFA : 176 sqm  
#19-03, #19-02 (mirror)

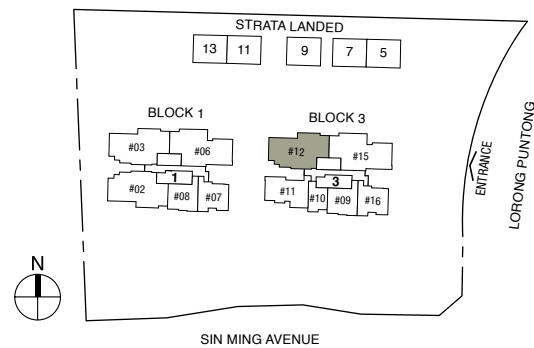
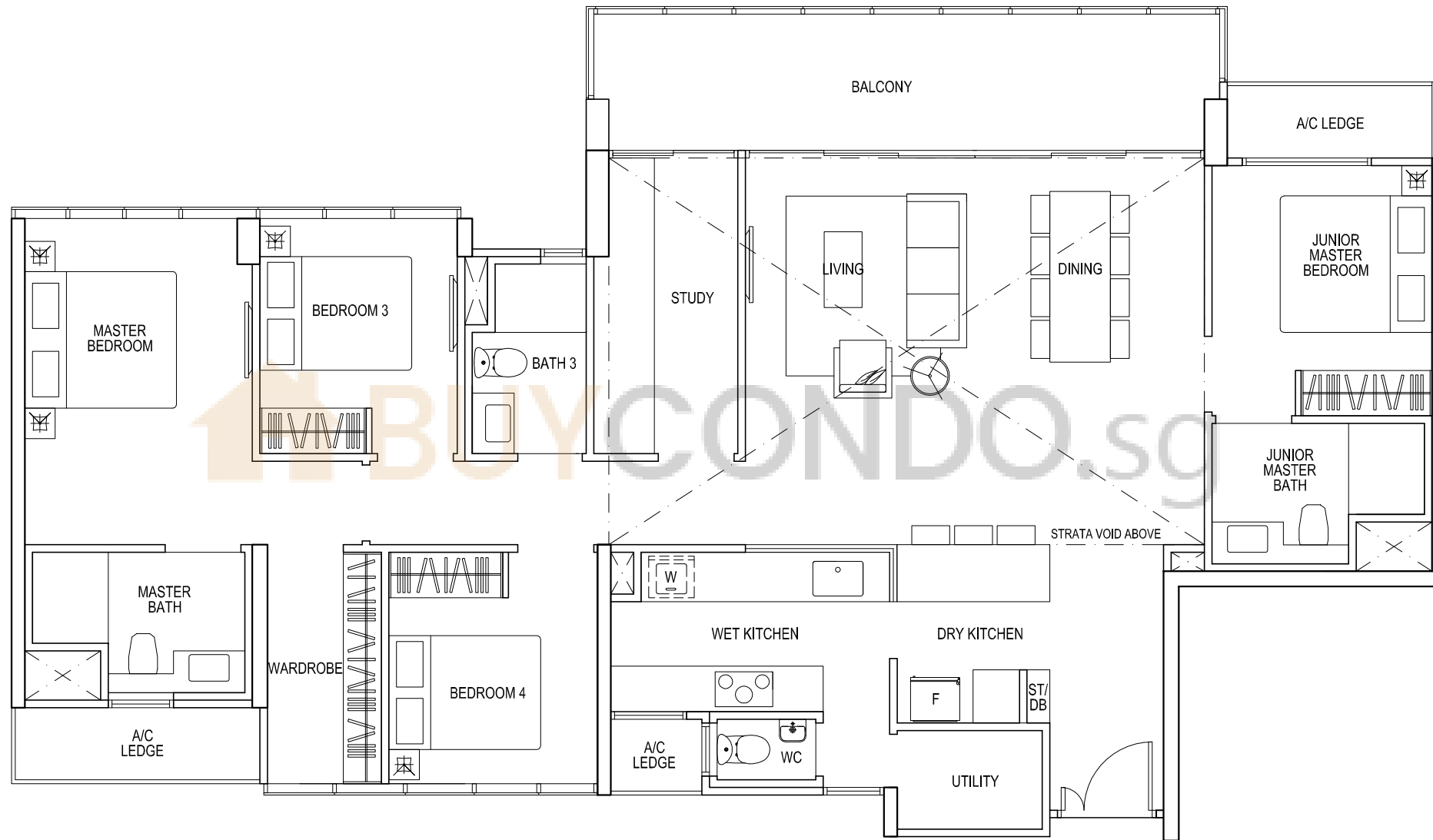


# 4-BEDROOM + STUDY PENTHOUSE

## Type PH2

STRATA SFA : 197 sqm

#19-12



# 4-BEDROOM + STUDY PENTHOUSE

## Type PH3

STRATA SFA : 197 sqm

#19-06, #19-15

