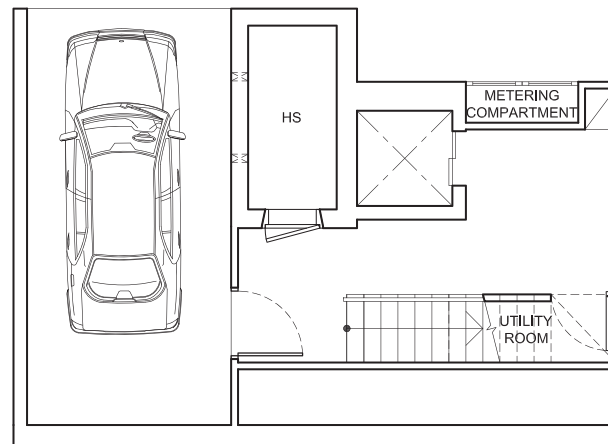
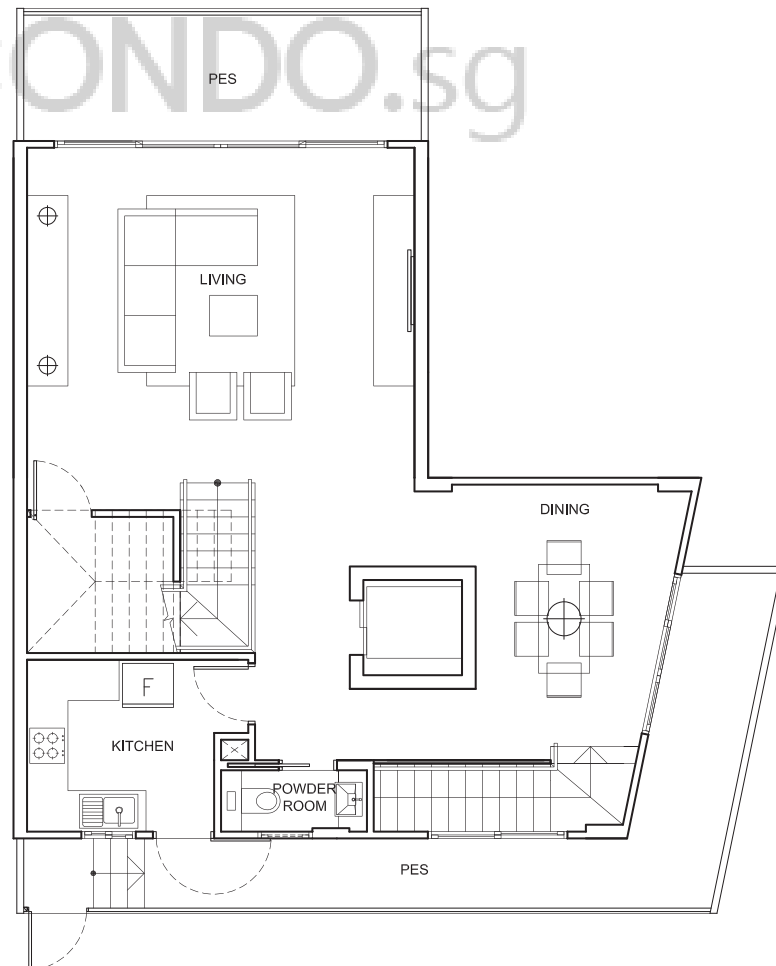


# UNIT 45

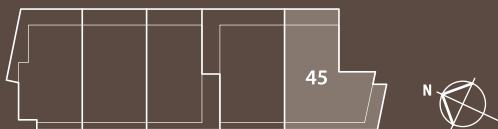
Strata Semi-Detached  
6 bedrooms + 1 family  
473 sq m



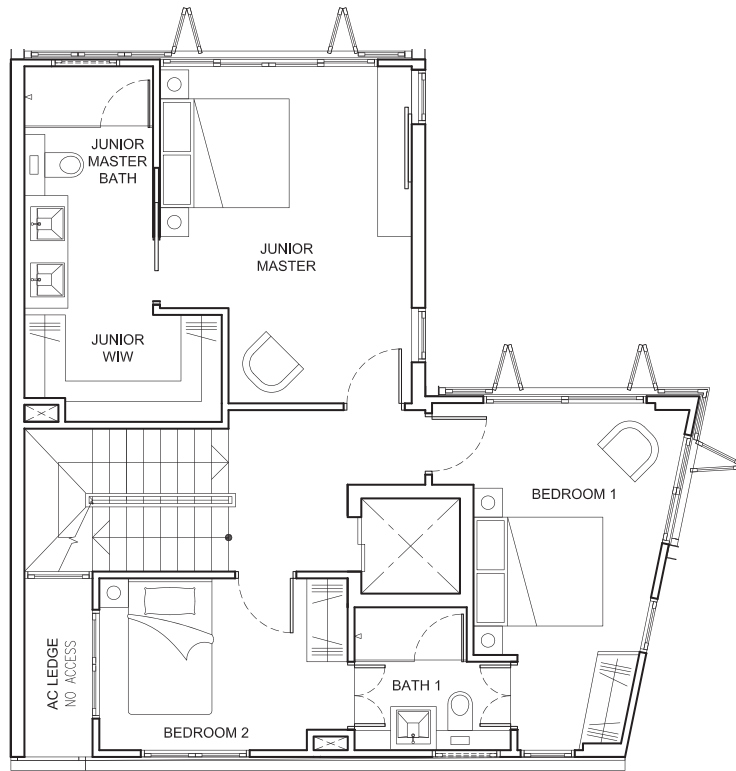
BASEMENT



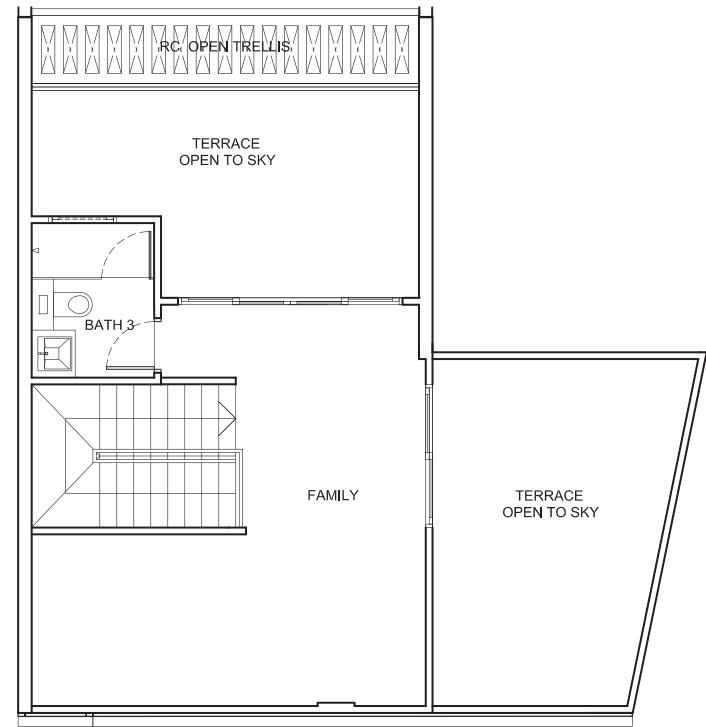
FIRST STOREY



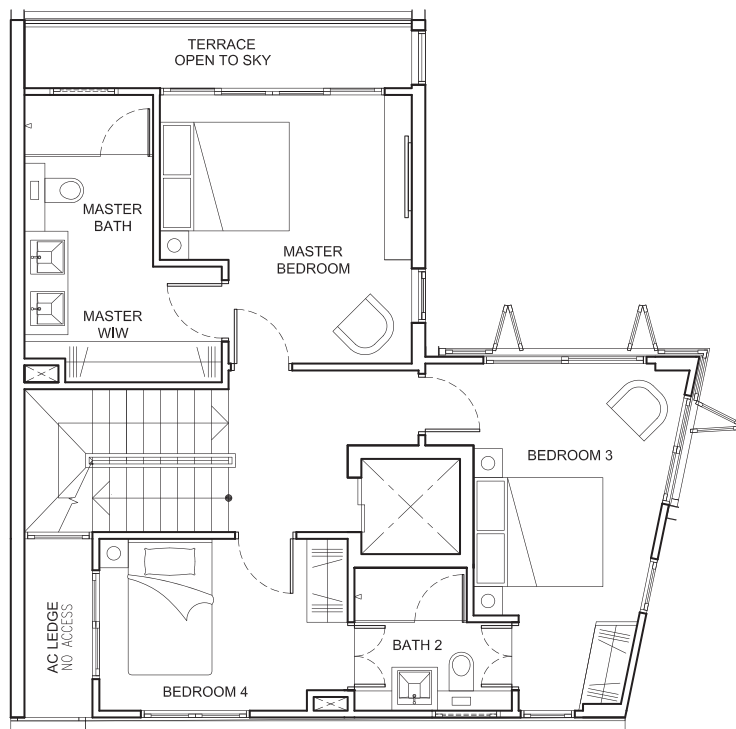
ALL PES, BALCONIES, PLANTERS & ROOF TERRACE AREAS ARE  
"NOT TO BE ENCLOSED OR ROOFED OVER".



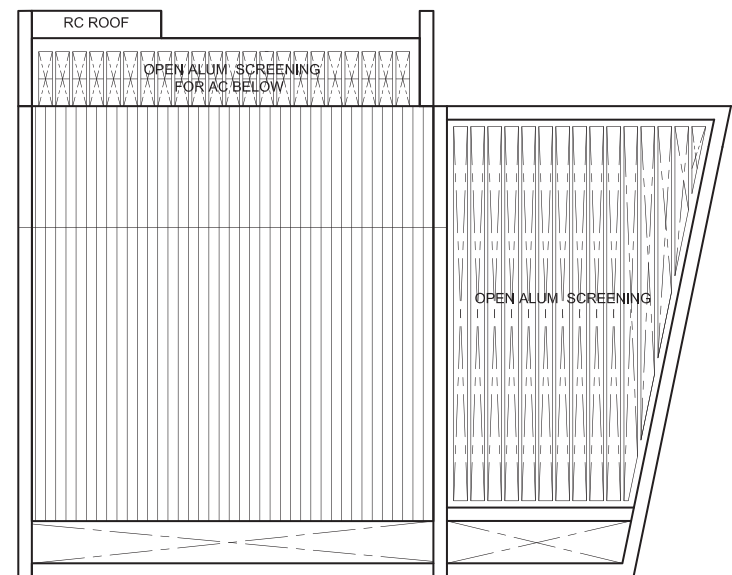
SECOND STOREY



ATTIC



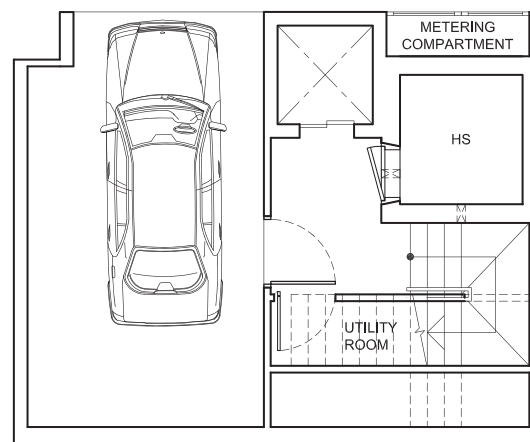
THIRD STOREY



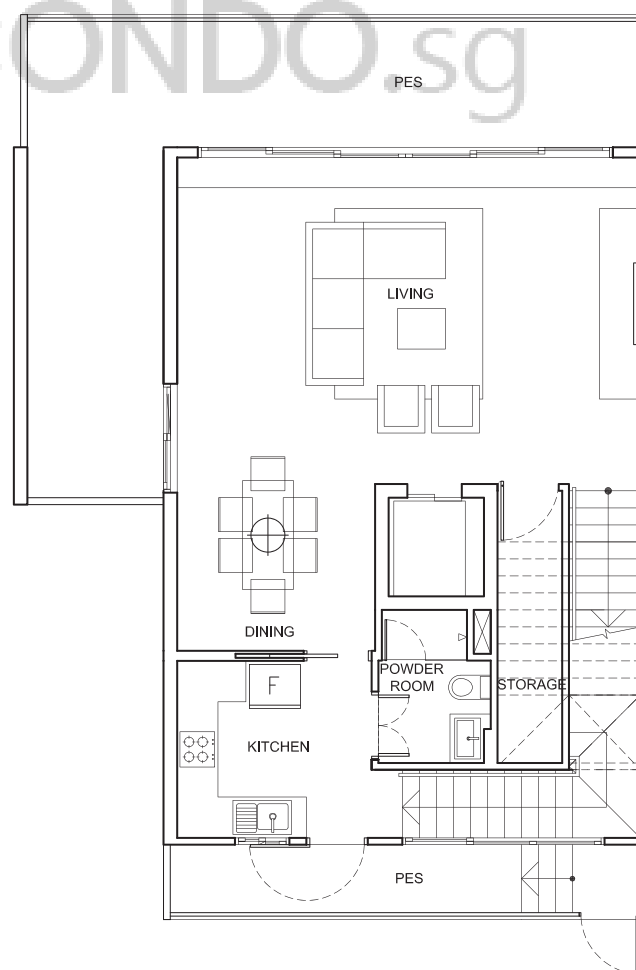
ROOF

# UNIT 45A

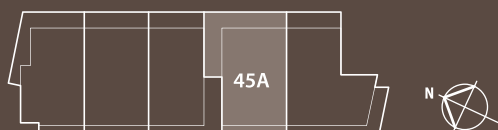
Strata Semi-Detached  
5 bedrooms + 1 family  
475 sq m



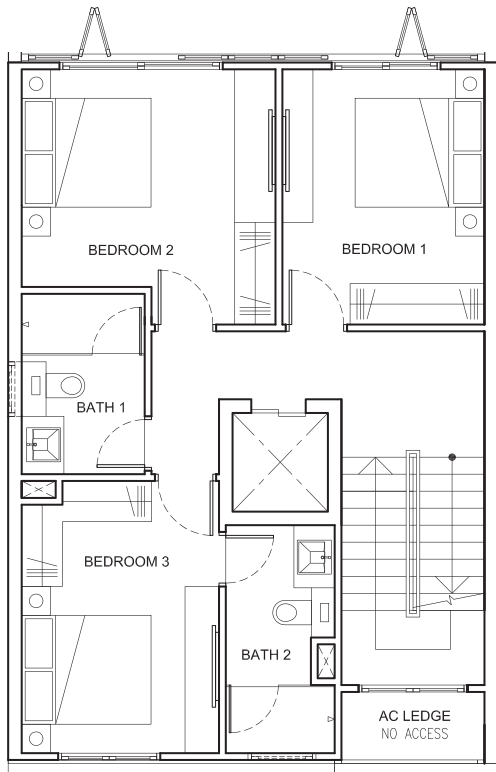
BASEMENT



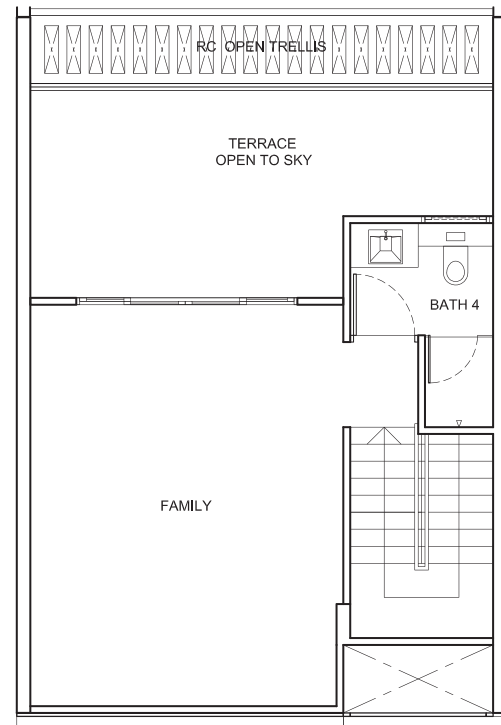
FIRST STOREY



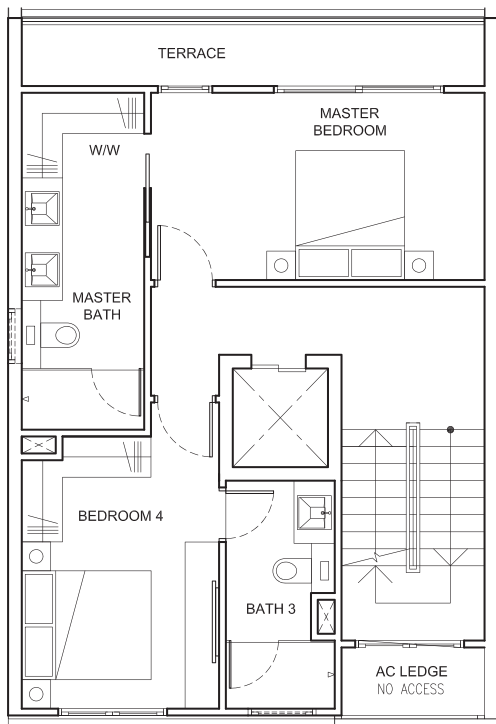
ALL PES, BALCONIES, PLANTERS & ROOF TERRACE AREAS ARE  
"NOT TO BE ENCLOSED OR ROOFED OVER".



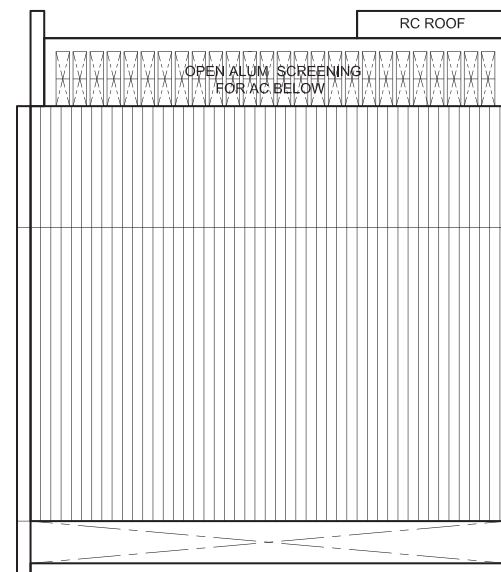
SECOND STOREY



ATTIC



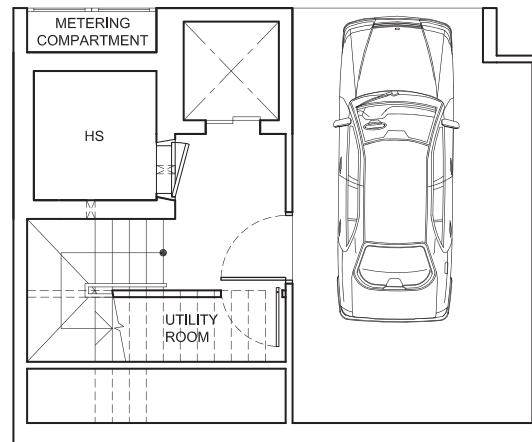
THIRD STOREY



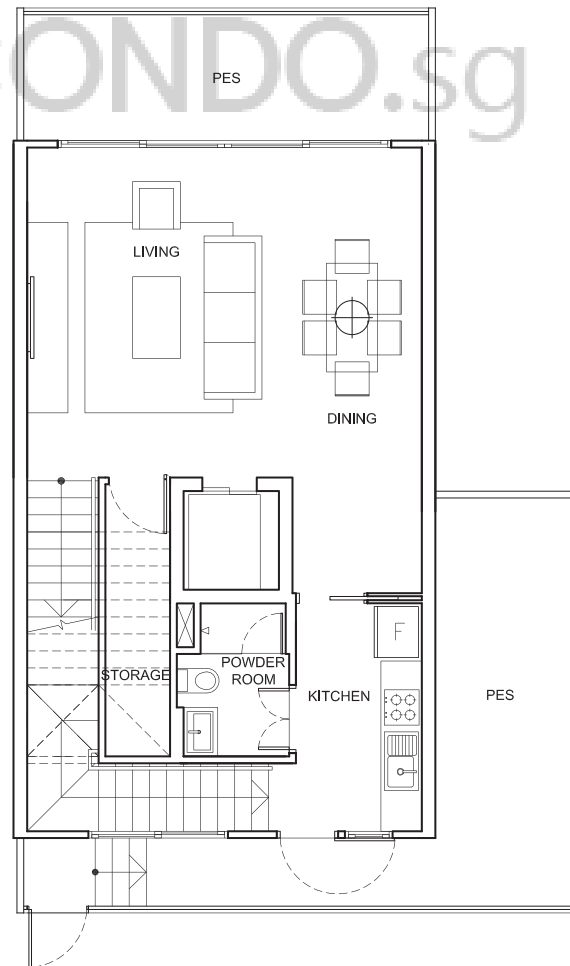
ROOF

# UNIT 45B

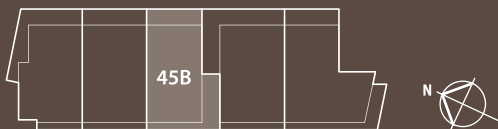
Strata Terrace  
5 bedrooms + 1 family  
411 sq m



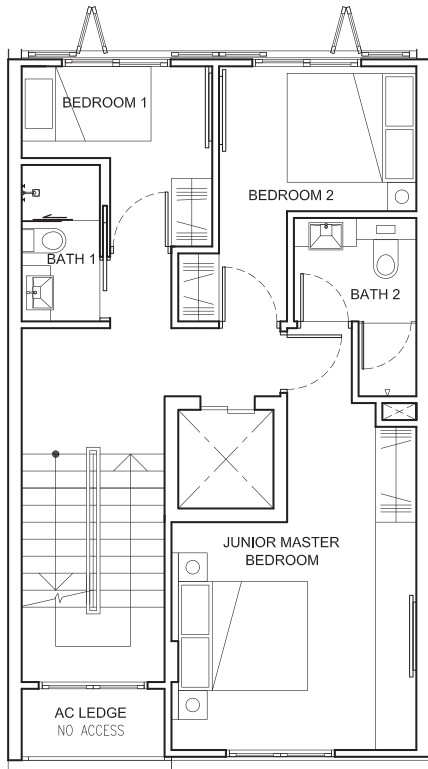
BASEMENT



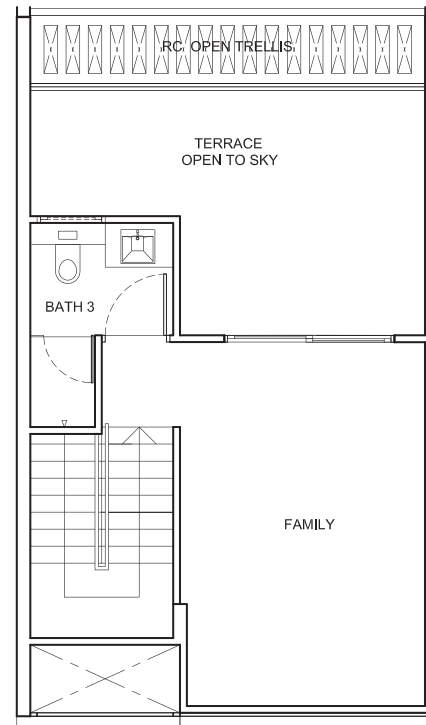
FIRST STOREY



ALL PES, BALCONIES, PLANTERS & ROOF TERRACE AREAS ARE  
"NOT TO BE ENCLOSED OR ROOFED OVER".

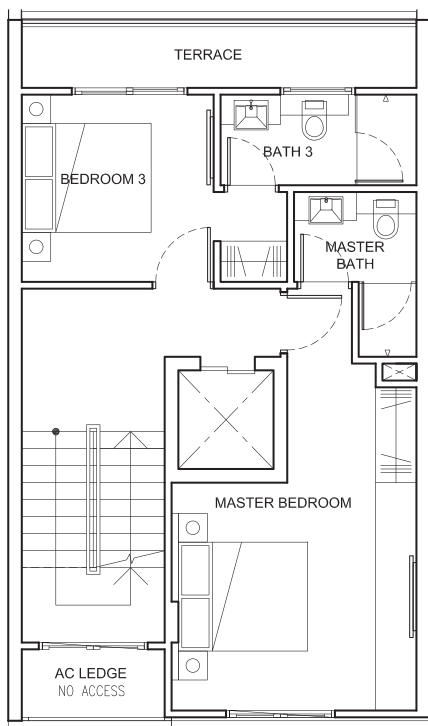


SECOND STOREY

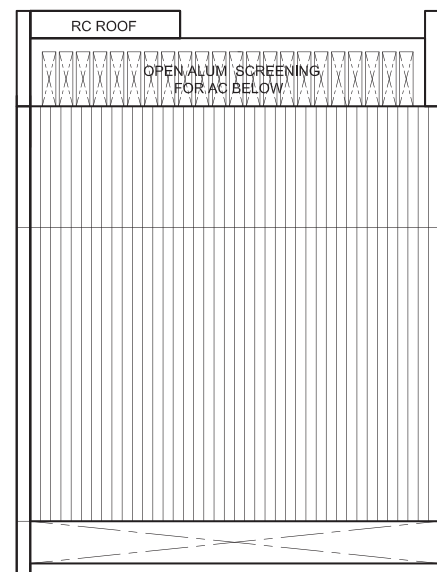


ATTIC

 BUYCONDO.sg



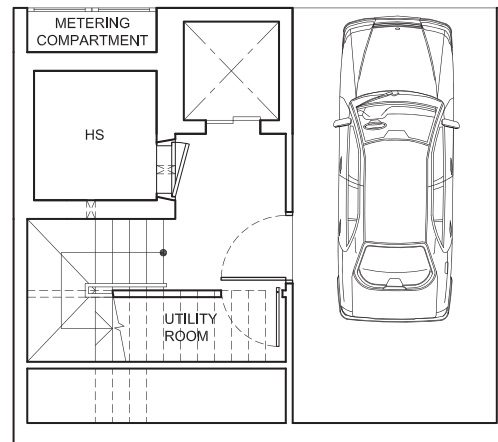
THIRD STOREY



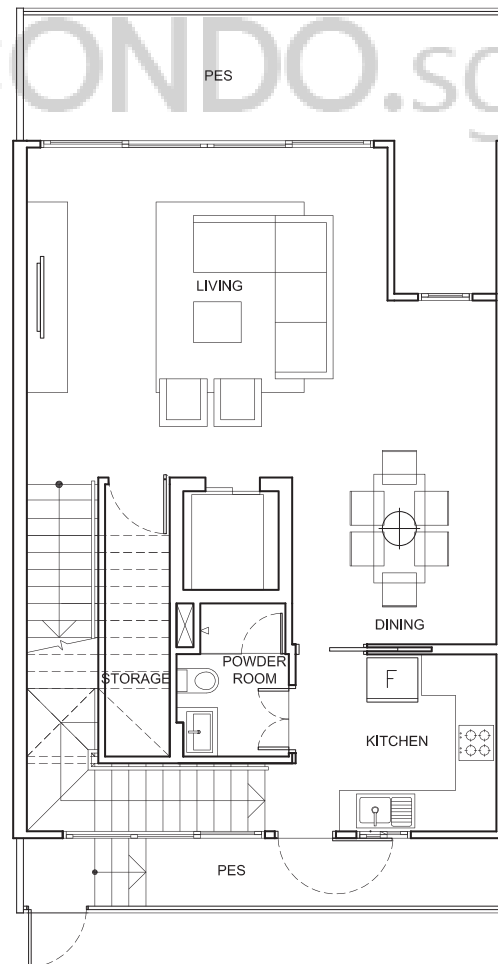
ROOF

# UNIT 45C

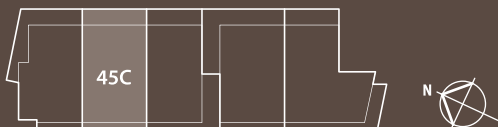
Strata Terrace  
5 bedrooms + 1 family  
412 sq m



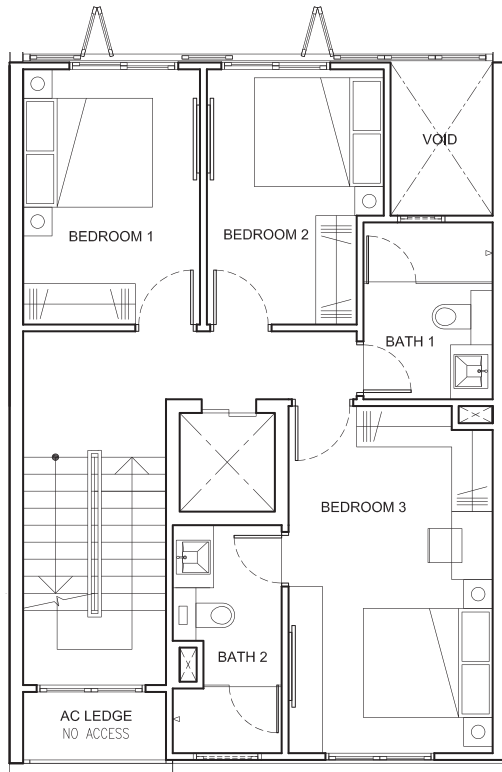
BASEMENT



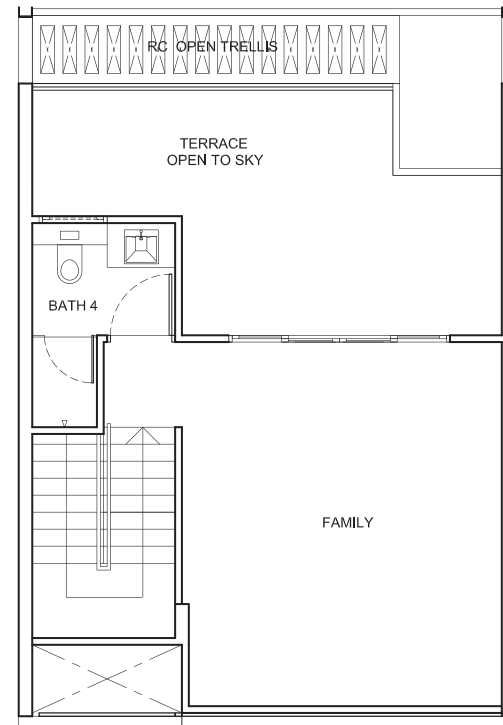
FIRST STOREY



ALL PES, BALCONIES, PLANTERS & ROOF TERRACE AREAS ARE  
"NOT TO BE ENCLOSED OR ROOFED OVER".

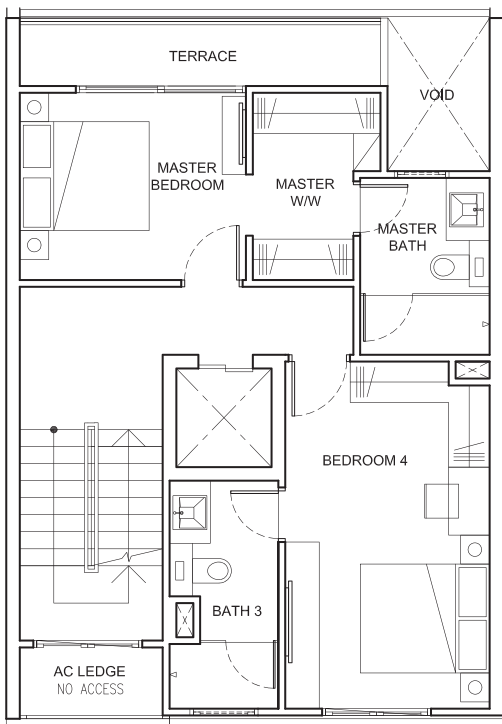


SECOND STOREY

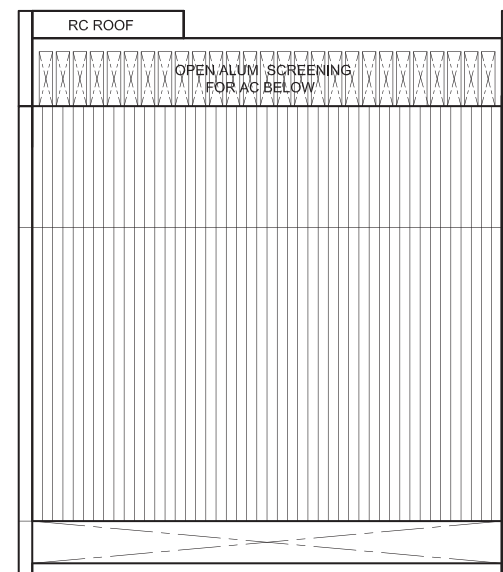


ATTIC

 BUYCONDO.sg



THIRD STOREY

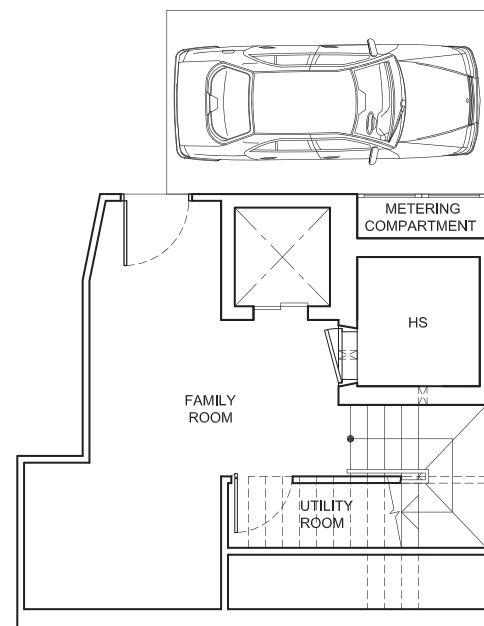


ROOF

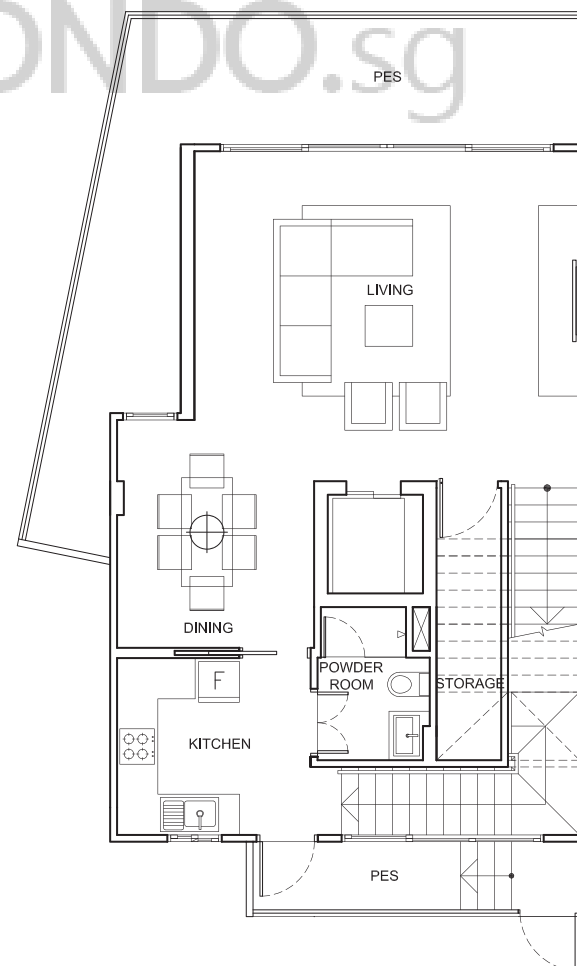


# UNIT 45D

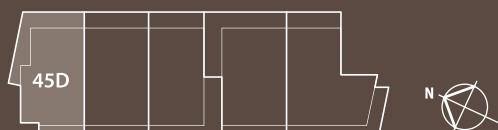
Strata Terrace  
5 bedrooms + 1 family  
425 sq m



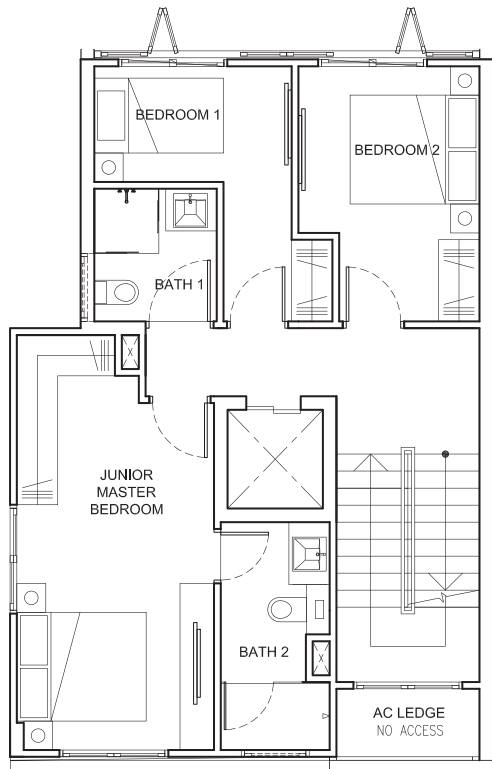
BASEMENT



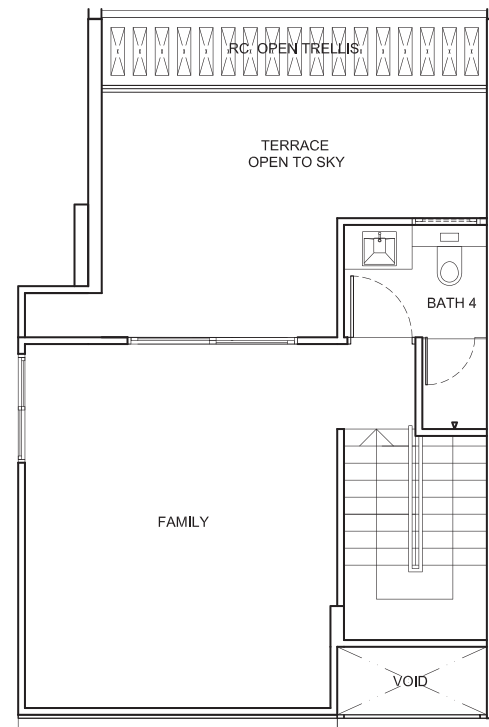
FIRST STOREY



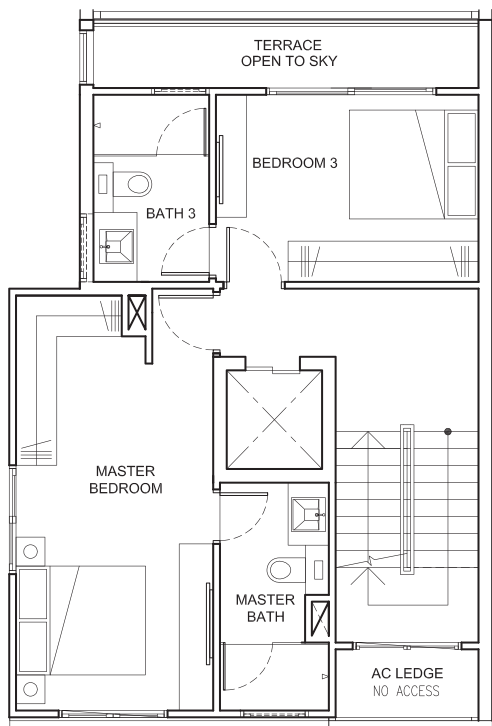
ALL PES, BALCONIES, PLANTERS & ROOF TERRACE AREAS ARE  
"NOT TO BE ENCLOSED OR ROOFED OVER".



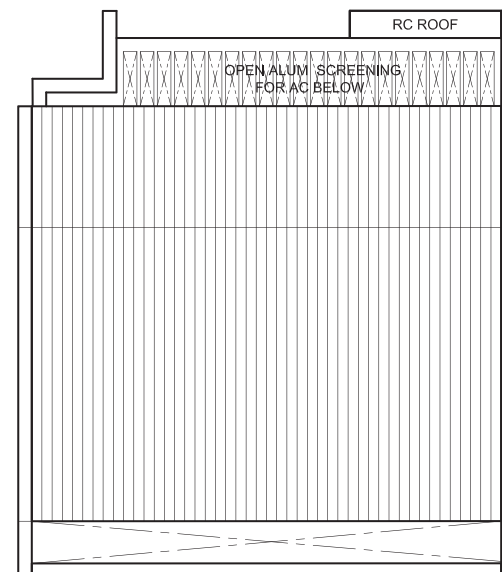
SECOND STOREY



ATTIC



THIRD STOREY



ROOF