

# LUXURY EVERYWHERE

To complement your luxury abode, only the finest of fittings and finishes shall accentuate the exquisiteness of your home with sophistication and style. From brands synonymous with top quality, to thoughtful designs, you can truly be at home with luxury.

Sanitary Fittings



Pure Freude an Wasser

Kitchen Appliances



Kitchen Appliances



## TYPE A1

43sqm / 463sqft  
#02-06, #03-06, #04-06,  
#02-31, #03-31, #04-31

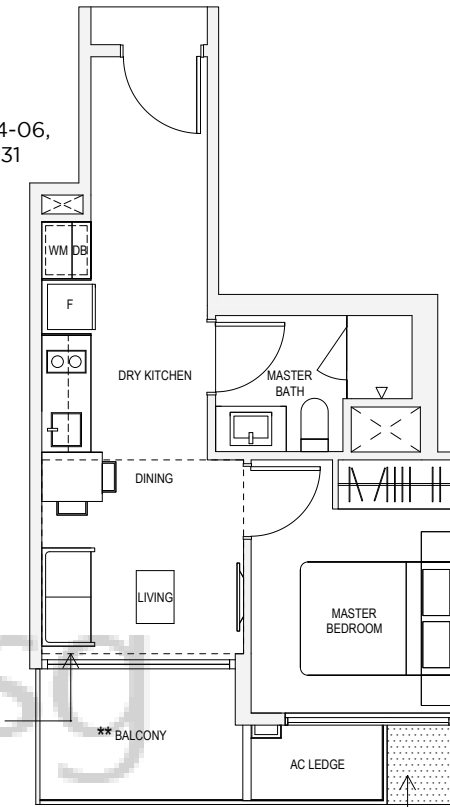
## TYPE A1H

50sqm / 538sqft\*  
#05-06, #05-31

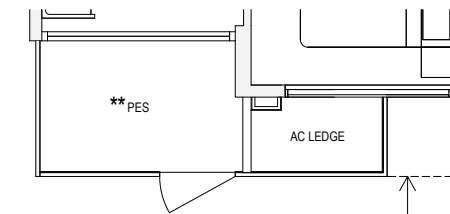
\* AREA OF 50sqm / 538sqft IS INCLUSIVE OF STRATA VOID AREA OF 7sqm / 75sqft ABOVE LIVING AND DINING AS PER DOTTED LINE

## TYPE A1P

43sqm / 463sqft  
#01-06, #01-31



RC LEDGE AT 2ND AND 4TH STOREY ONLY (NOT ACCESSIBLE AND NON-STRATA AREA)



OVERHEAD RC LEDGE



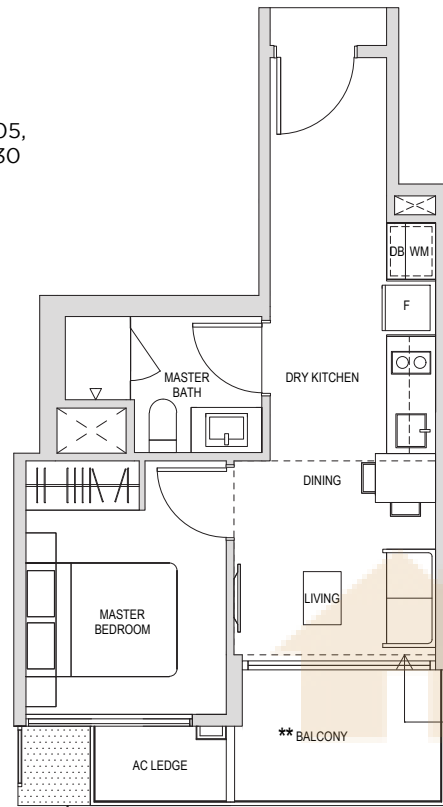
Key plan not to scale.

\*\* The PES/ balcony shall not be enclosed. Only URA approved balcony screens are to be used. For an illustration of the approved balcony screen, please refer to page 82 of this brochure

Note: Areas include A/C Ledge, balcony, PES, open to sky yard and strata void where applicable. Orientations and facings will differ depending on the unit you are purchasing, please refer to the key plan. Plans are not to scale and subject to change as may be required or approved by the relevant authorities. All areas are subject to final survey.

**TYPE A2**

43sqm / 463sqft  
 #02-05, #03-05, #04-05,  
 #02-30, #03-30, #04-30



RC LEDGE AT 2ND AND 4TH STOREY ONLY (NOT ACCESSIBLE AND NON-STRATA AREA)

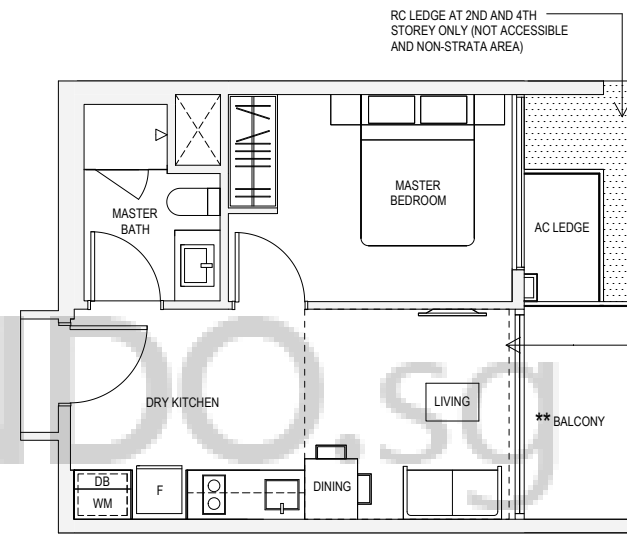
**TYPE A2H**

50sqm / 538sqft\*  
 #05-05, #05-30

\* AREA OF 50sqm / 538sqft IS INCLUSIVE OF STRATA VOID AREA OF 7sqm / 75sqft ABOVE LIVING AND DINING AS PER DOTTED LINE

**TYPE A3**

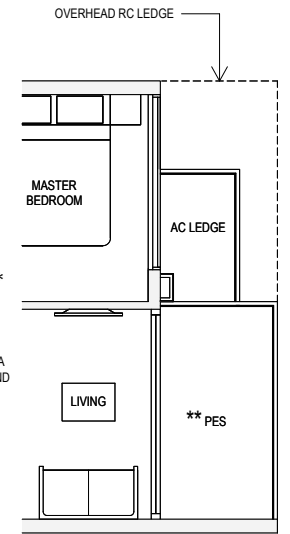
43sqm / 463sqft  
 #02-03, #03-03, #04-03,  
 #02-28, #03-28, #04-28



RC LEDGE AT 2ND AND 4TH STOREY ONLY (NOT ACCESSIBLE AND NON-STRATA AREA)

**TYPE A3P**

43sqm / 463sqft  
 #01-03



OVERHEAD RC LEDGE

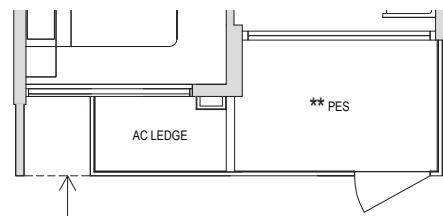
**TYPE A3H**

51sqm / 549sqft\*  
 #05-03, #05-28

\* AREA OF 51sqm / 549sqft IS INCLUSIVE OF STRATA VOID AREA OF 8sqm / 86sqft ABOVE LIVING AND DINING AS PER DOTTED LINE

**TYPE A2P**

43sqm / 463sqft  
 #01-05, #01-30



OVERHEAD RC LEDGE



Key plan not to scale.

\*\* The PES/ balcony shall not be enclosed. Only URA approved balcony screens are to be used. For an illustration of the approved balcony screen, please refer to page 82 of this brochure

Note: Areas include A/C Ledge, balcony, PES, open to sky yard and strata void where applicable. Orientations and facings will differ depending on the unit you are purchasing, please refer to the key plan. Plans are not to scale and subject to change as may be required or approved by the relevant authorities. All areas are subject to final survey.

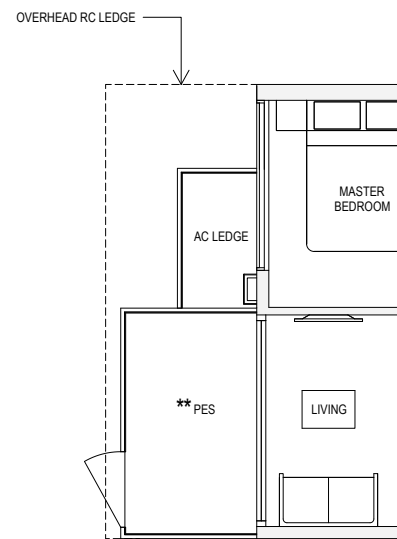


Key plan not to scale.

\*\* The PES/ balcony shall not be enclosed. Only URA approved balcony screens are to be used. For an illustration of the approved balcony screen, please refer to page 82 of this brochure

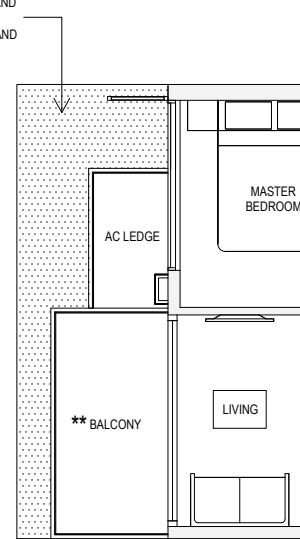
Note: Areas include A/C Ledge, balcony, PES, open to sky yard and strata void where applicable. Orientations and facings will differ depending on the unit you are purchasing, please refer to the key plan. Plans are not to scale and subject to change as may be required or approved by the relevant authorities. All areas are subject to final survey.

**TYPE A4P**  
45sqm / 484sqft  
#01-08, #01-33



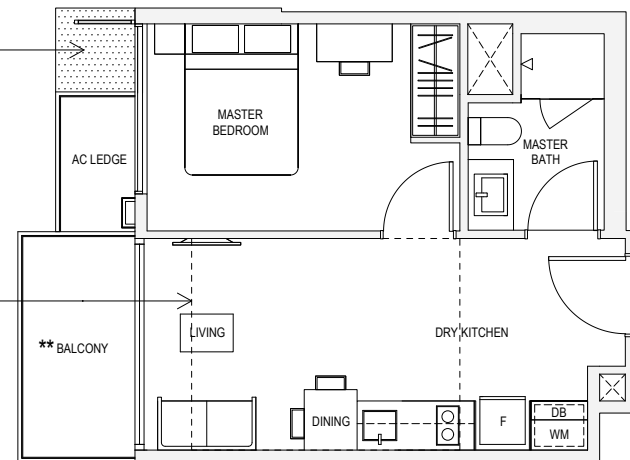
**TYPE A4**  
44sqm / 474sqft  
#02-08, #04-08,  
#02-33, #04-33

RC LEDGE AT 2ND AND 4TH STOREY ONLY (NOT ACCESSIBLE AND NON-STRATA AREA)



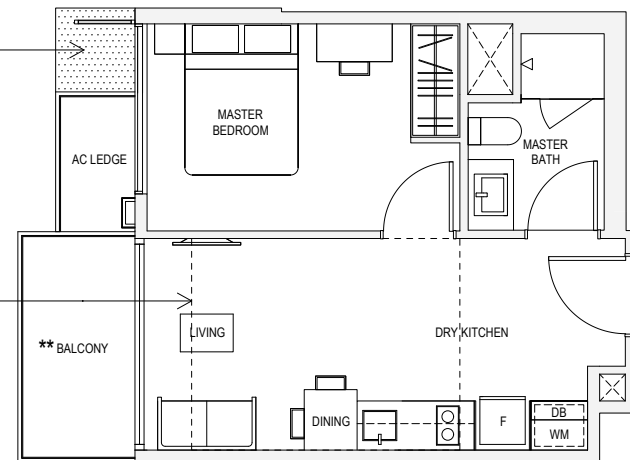
**TYPE A4**  
44sqm / 474sqft  
#03-08,  
#03-33, #05-33

RC LEDGE AT 3RD AND 5TH STOREY ONLY (NOT ACCESSIBLE AND NON-STRATA AREA)



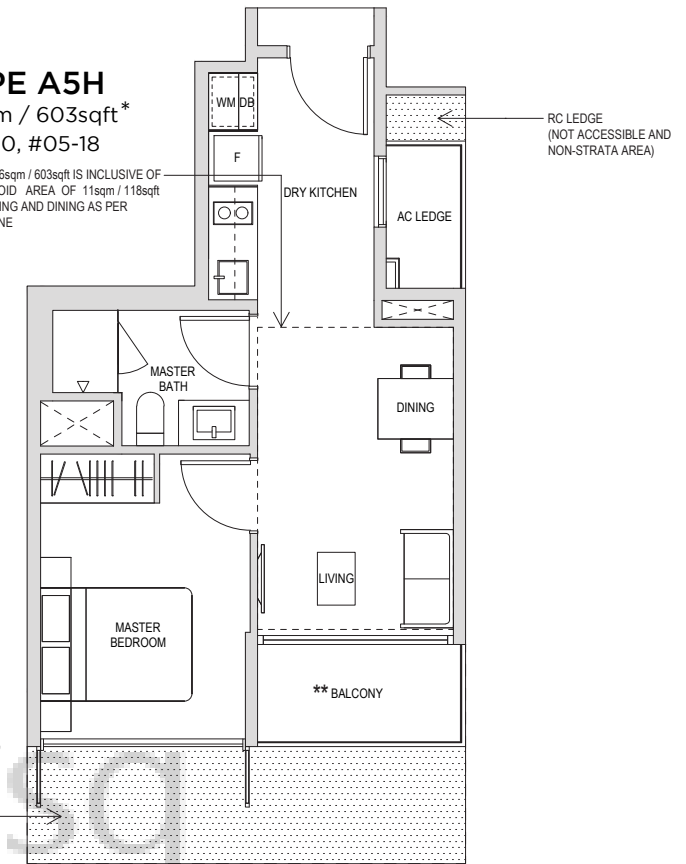
**TYPE A4H**  
55sqm / 592sqft\*  
#05-08

\*AREA OF 55sqm / 592sqft IS INCLUSIVE OF STRATA VOID AREA OF 11sqm / 118sqft ABOVE LIVING AND DINING AS PER DOTTED LINE



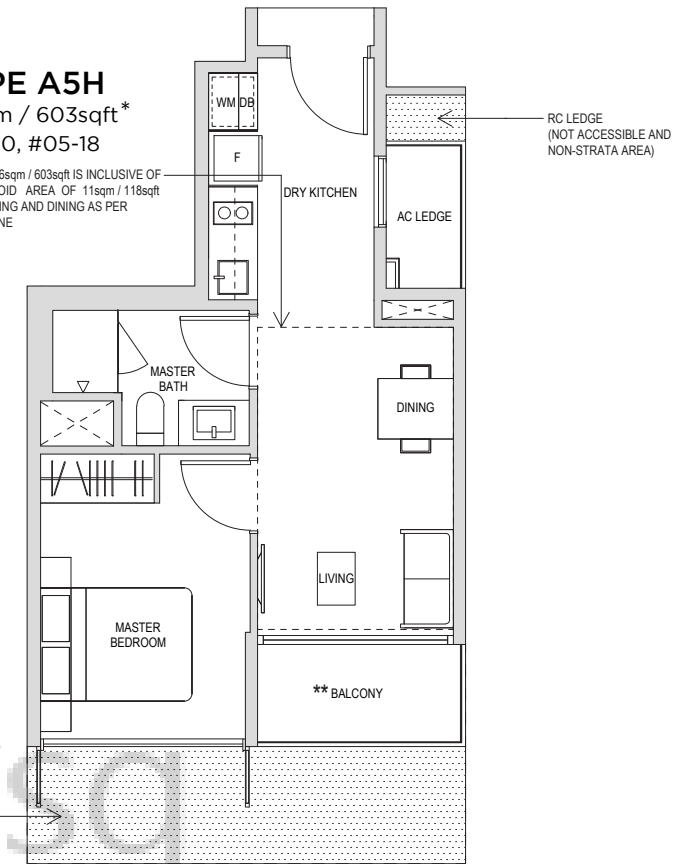
**TYPE A5H**  
56sqm / 603sqft\*  
#05-10, #05-18

\*AREA OF 56sqm / 603sqft IS INCLUSIVE OF STRATA VOID AREA OF 11sqm / 118sqft ABOVE LIVING AND DINING AS PER DOTTED LINE



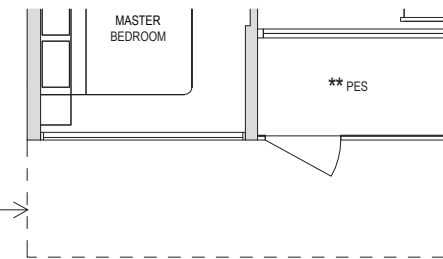
**TYPE A5**  
45sqm / 484sqft  
#02-10, #03-10, #04-10,  
#02-18, #03-18, #04-18

RC LEDGE AT 2ND AND 4TH STOREY ONLY (NOT ACCESSIBLE AND NON-STRATA AREA)



**TYPE A5P**  
45sqm / 484sqft  
#01-10 #01-18

OVERHEAD RC LEDGE



Key plan not to scale.

\*\* The PES/ balcony shall not be enclosed. Only URA approved balcony screens are to be used. For an illustration of the approved balcony screen, please refer to page 82 of this brochure

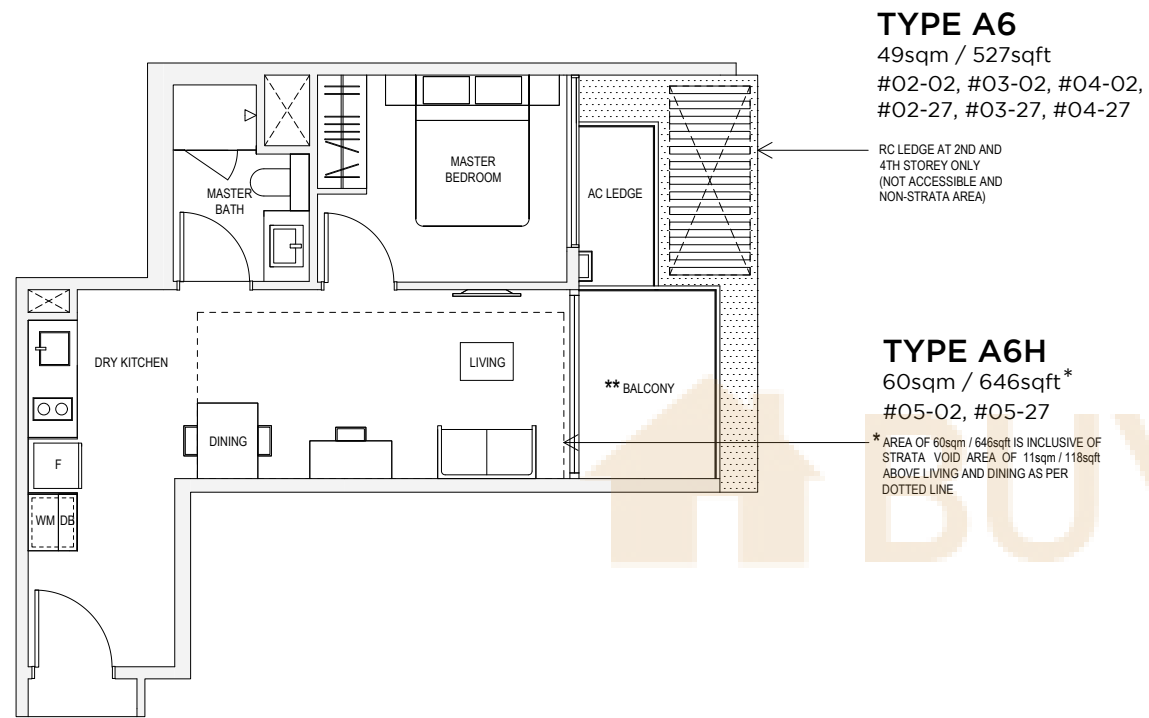
Note: Areas include A/C Ledge, balcony, PES, open to sky yard and strata void where applicable. Orientations and facings will differ depending on the unit you are purchasing, please refer to the key plan. Plans are not to scale and subject to change as may be required or approved by the relevant authorities. All areas are subject to final survey.



Key plan not to scale.

\*\* The PES/ balcony shall not be enclosed. Only URA approved balcony screens are to be used. For an illustration of the approved balcony screen, please refer to page 82 of this brochure

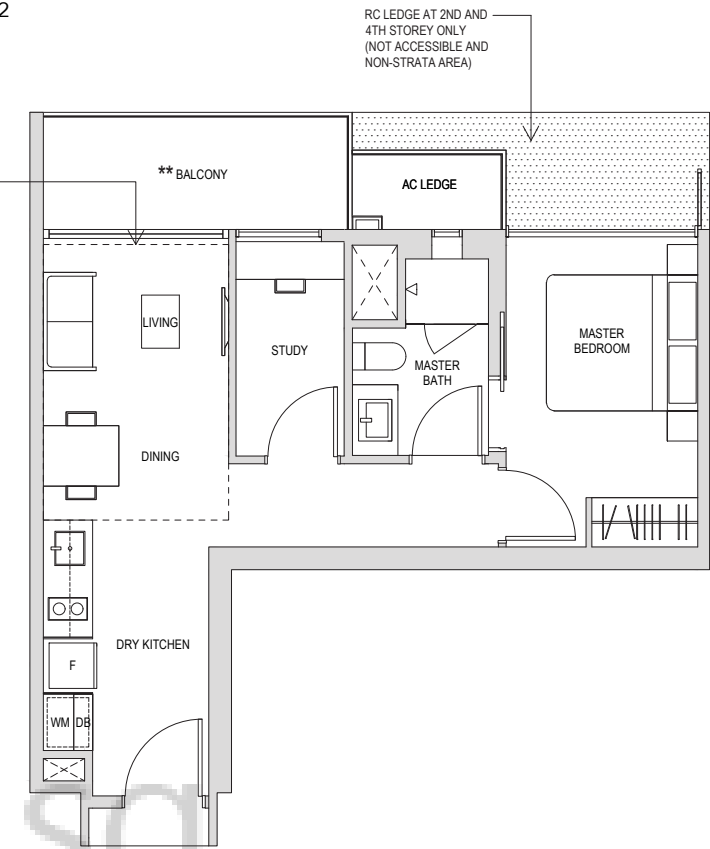
Note: Areas include A/C Ledge, balcony, PES, open to sky yard and strata void where applicable. Orientations and facings will differ depending on the unit you are purchasing, please refer to the key plan. Plans are not to scale and subject to change as may be required or approved by the relevant authorities. All areas are subject to final survey.



**TYPE A7**  
56sqm / 603sqft  
#02-14, #03-14, #04-14,  
#02-22, #03-22, #04-22

**TYPE A7H**  
66sqm / 710sqft\*  
#05-14, #05-22

\* AREA OF 66sqm / 710sqft IS INCLUSIVE OF STRATA VOID AREA OF 10sqm / 108sqft ABOVE LIVING AND DINING AS PER DOTTED LINE



**TYPE A7P**  
56sqm / 603sqft  
#01-14, #01-22



Key plan not to scale.

\*\* The PES/ balcony shall not be enclosed. Only URA approved balcony screens are to be used. For an illustration of the approved balcony screen, please refer to page 82 of this brochure

Note: Areas include A/C Ledge, balcony, PES, open to sky yard and strata void where applicable. Orientations and facings will differ depending on the unit you are purchasing, please refer to the key plan. Plans are not to scale and subject to change as may be required or approved by the relevant authorities. All areas are subject to final survey.



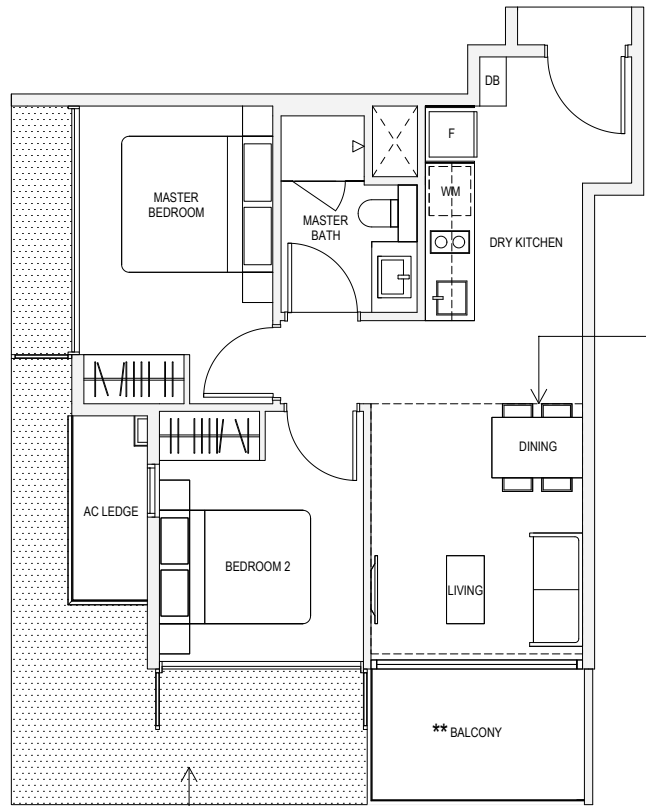
Key plan not to scale.

\*\* The PES/ balcony shall not be enclosed. Only URA approved balcony screens are to be used. For an illustration of the approved balcony screen, please refer to page 82 of this brochure

Note: Areas include A/C Ledge, balcony, PES, open to sky yard and strata void where applicable. Orientations and facings will differ depending on the unit you are purchasing, please refer to the key plan. Plans are not to scale and subject to change as may be required or approved by the relevant authorities. All areas are subject to final survey.

**TYPE B1**

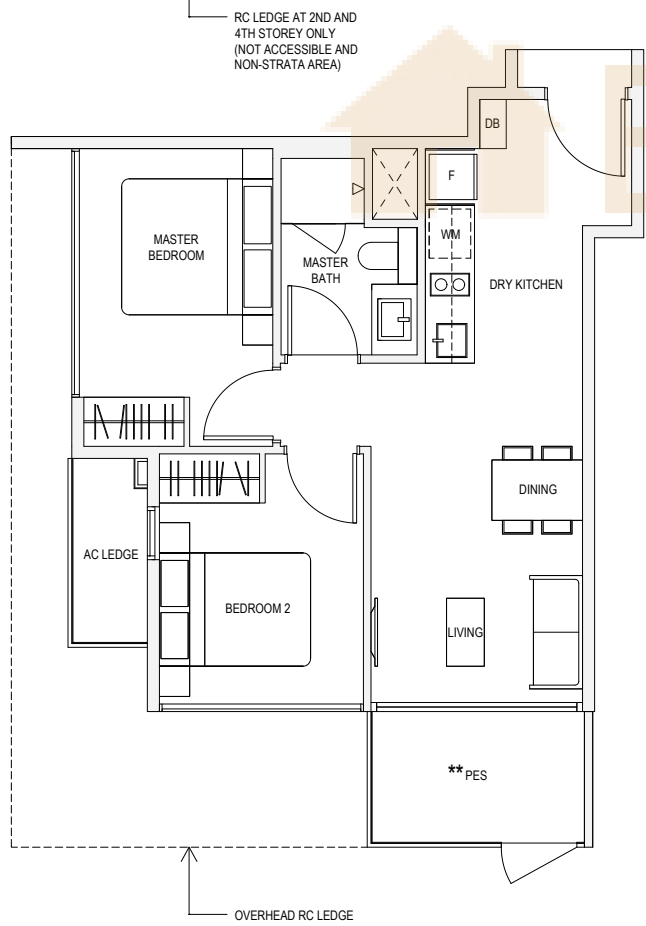
60sqm / 646sqft  
 #02-07, #03-07, #04-07,  
 #02-32, #03-32, #04-32



**TYPE B1H**

70sqm / 753sqft\*  
 #05-07, #05-32

\* AREA OF 70sqm / 753sqft IS INCLUSIVE OF STRATA VOID AREA OF 10sqm / 108sqft ABOVE LIVING AND DINING AS PER DOTTED LINE



**TYPE B1P**

60sqm / 646sqft  
 #01-07, #01-32



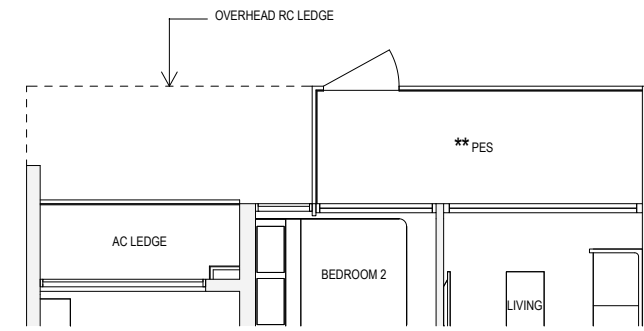
Key plan not to scale.

\*\* The PES/ balcony shall not be enclosed. Only URA approved balcony screens are to be used. For an illustration of the approved balcony screen, please refer to page 82 of this brochure

Note: Areas include A/C Ledge, balcony, PES, open to sky yard and strata void where applicable. Orientations and facings will differ depending on the unit you are purchasing, please refer to the key plan. Plans are not to scale and subject to change as may be required or approved by the relevant authorities. All areas are subject to final survey.

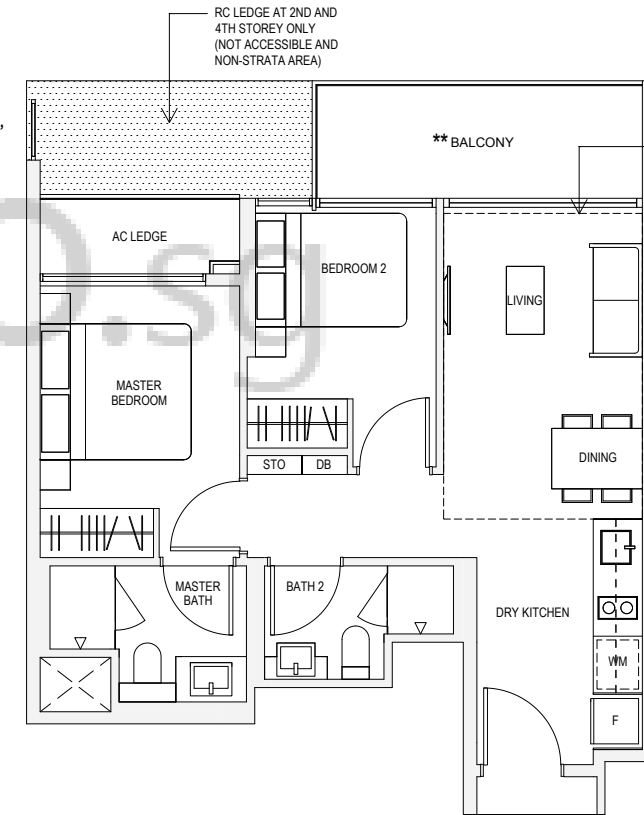
**TYPE B2P**

64sqm / 689sqft  
 #01-13, #01-21



**TYPE B2**

64sqm / 689sqft  
 #02-13, #03-13, #04-13,  
 #02-21, #03-21, #04-21



**TYPE B2H**

75sqm / 807sqft\*  
 #05-13, #05-21

\* AREA OF 75sqm / 807sqft IS INCLUSIVE OF STRATA VOID AREA OF 11sqm / 118sqft ABOVE LIVING AND DINING AS PER DOTTED LINE

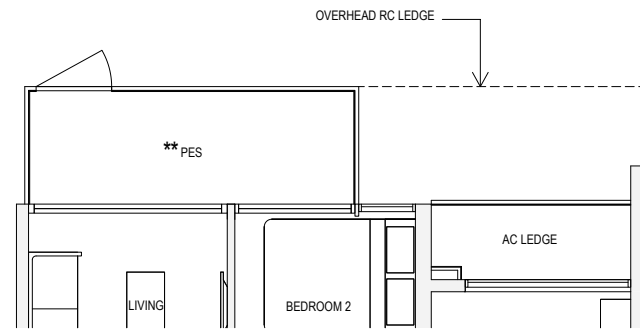


Key plan not to scale.

\*\* The PES/ balcony shall not be enclosed. Only URA approved balcony screens are to be used. For an illustration of the approved balcony screen, please refer to page 82 of this brochure

Note: Areas include A/C Ledge, balcony, PES, open to sky yard and strata void where applicable. Orientations and facings will differ depending on the unit you are purchasing, please refer to the key plan. Plans are not to scale and subject to change as may be required or approved by the relevant authorities. All areas are subject to final survey.

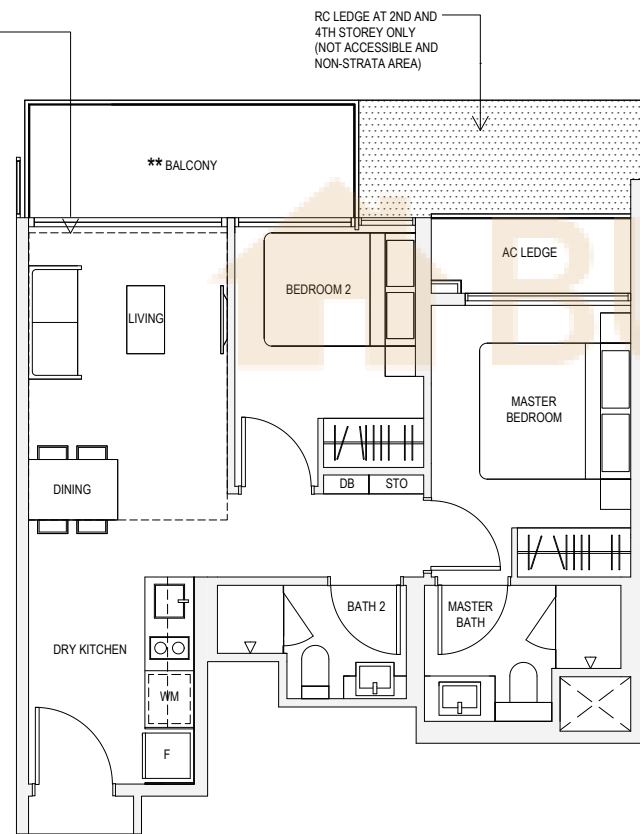
**TYPE B3P**  
65sqm / 700sqft  
#01-15, #01-23



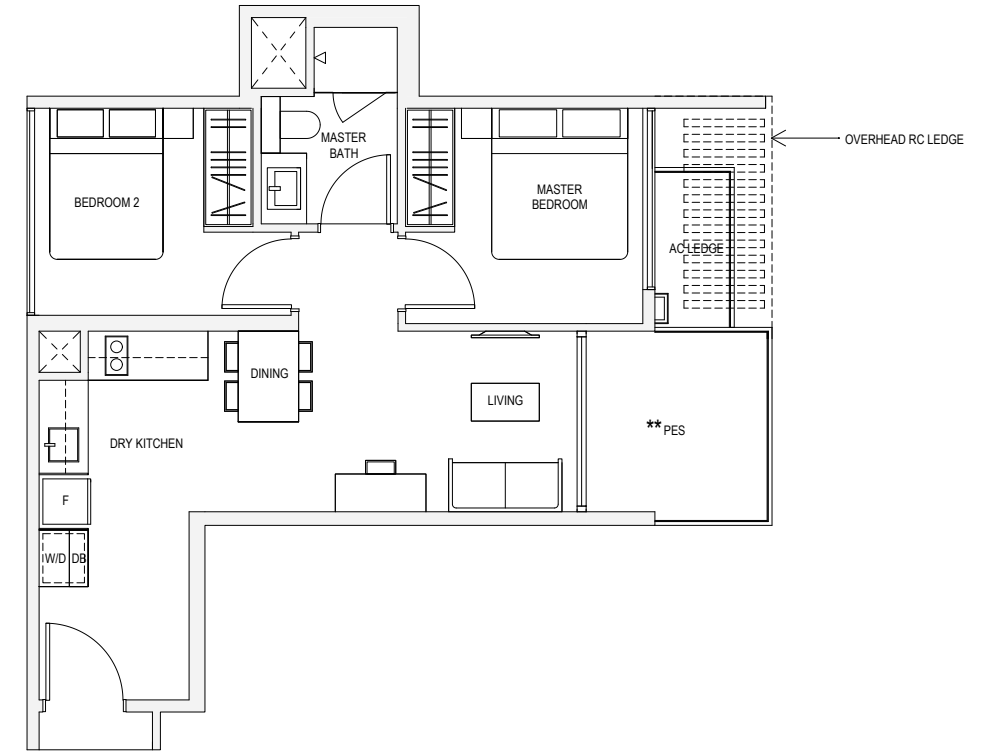
**TYPE B3**  
65sqm / 700sqft  
#02-15, #03-15, #04-15,  
#02-23, #03-23, #04-23

**TYPE B3H**  
76sqm / 818sqft\*  
#05-15, #05-23

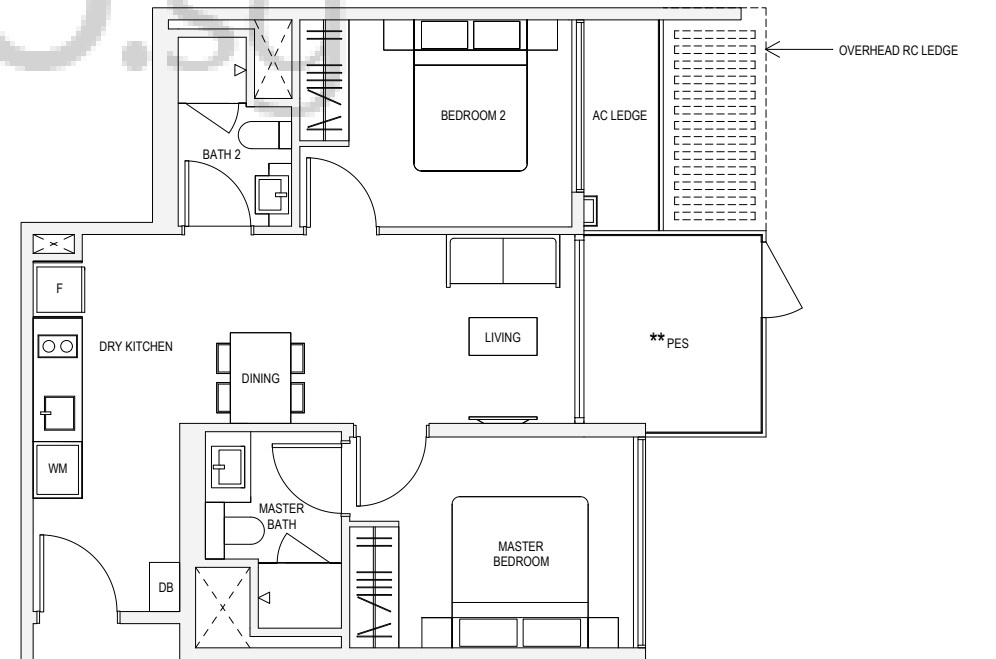
\* AREA OF 76sqm / 818sqft IS INCLUSIVE OF STRATA VOID AREA OF 11sqm / 118sqft ABOVE LIVING AND DINING AS PER DOTTED LINE



**TYPE B4P**  
61sqm / 657sqft  
#01-02



**TYPE B5P**  
69sqm / 743sqft  
#01-27



Key plan not to scale.

\*\* The PES/ balcony shall not be enclosed. Only URA approved balcony screens are to be used. For an illustration of the approved balcony screen, please refer to page 82 of this brochure

Note: Areas include A/C Ledge, balcony, PES, open to sky yard and strata void where applicable. Orientations and facings will differ depending on the unit you are purchasing, please refer to the key plan. Plans are not to scale and subject to change as may be required or approved by the relevant authorities. All areas are subject to final survey.

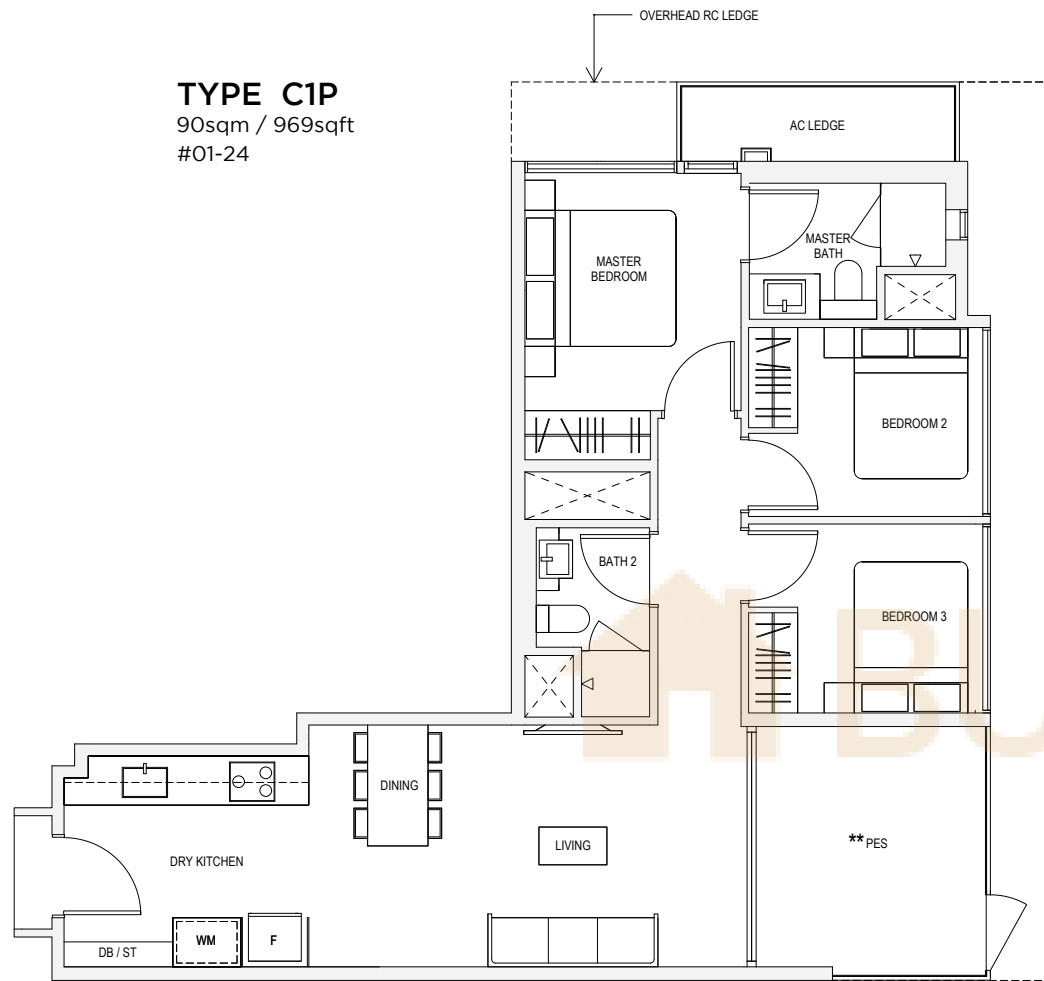


Key plan not to scale.

\*\* The PES/ balcony shall not be enclosed. Only URA approved balcony screens are to be used. For an illustration of the approved balcony screen, please refer to page 82 of this brochure

Note: Areas include A/C Ledge, balcony, PES, open to sky yard and strata void where applicable. Orientations and facings will differ depending on the unit you are purchasing, please refer to the key plan. Plans are not to scale and subject to change as may be required or approved by the relevant authorities. All areas are subject to final survey.

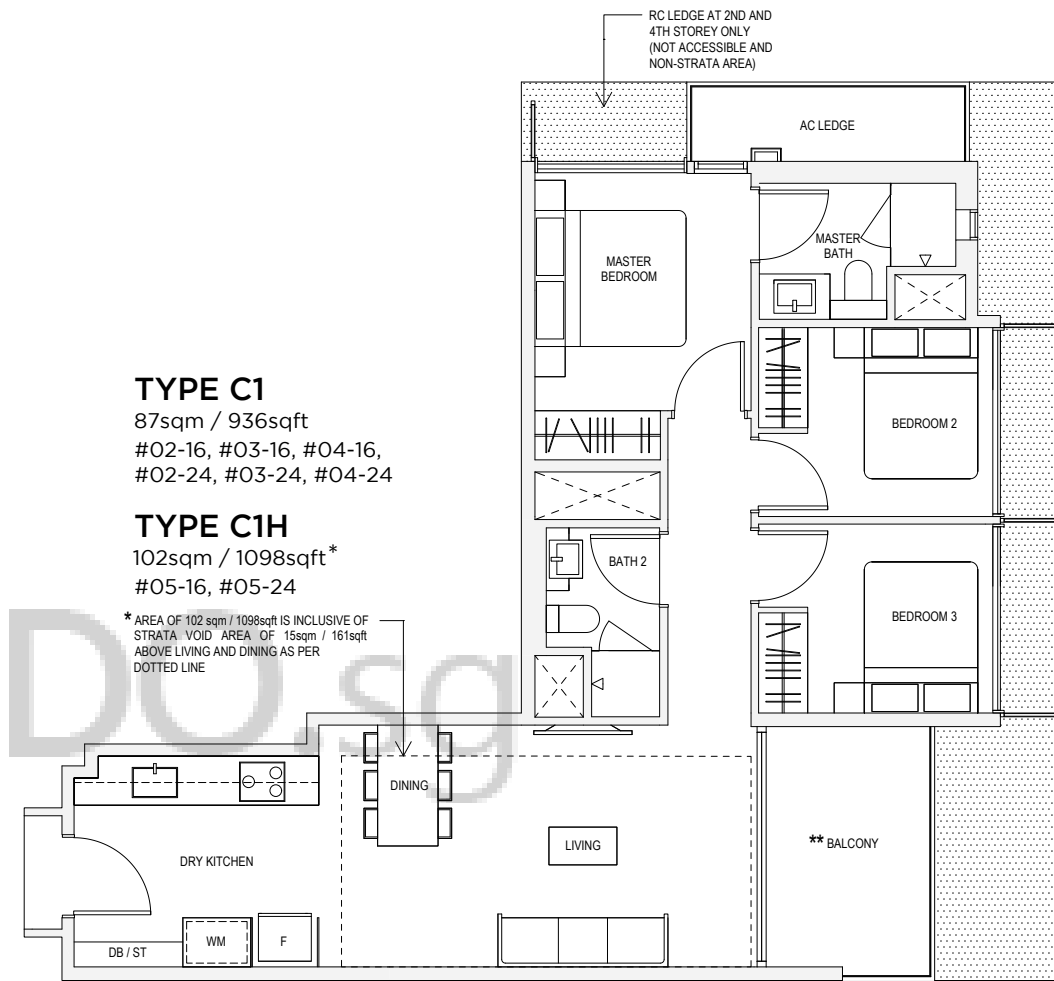
**TYPE C1P**  
90sqm / 969sqft  
#01-24



**TYPE C1**  
87sqm / 936sqft  
#02-16, #03-16, #04-16,  
#02-24, #03-24, #04-24

**TYPE C1H**  
102sqm / 1098sqft\*  
#05-16, #05-24

\* AREA OF 102 sqm / 1098sqft IS INCLUSIVE OF STRATA VOID AREA OF 15sqm / 161sqft ABOVE LIVING AND DINING AS PER DOTTED LINE



Key plan not to scale.

\*\* The PES/ balcony shall not be enclosed. Only URA approved balcony screens are to be used. For an illustration of the approved balcony screen, please refer to page 82 of this brochure

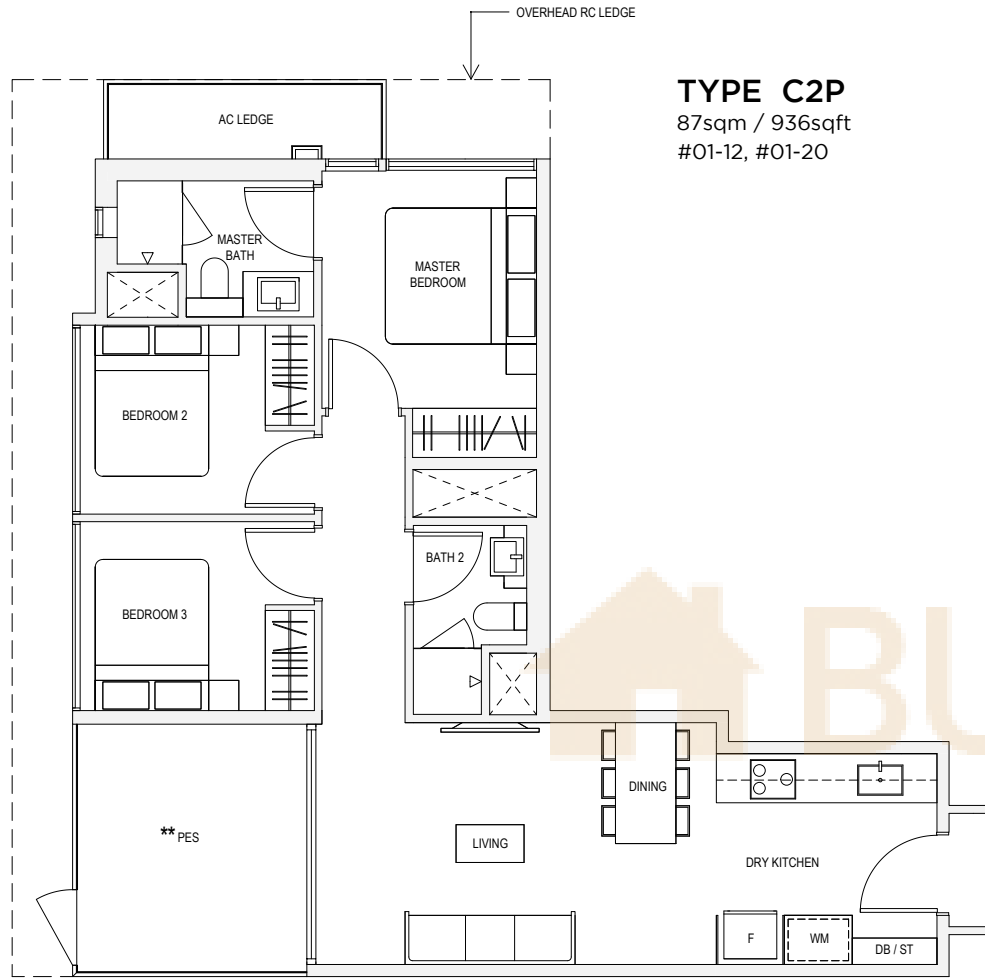
Note: Areas include A/C Ledge, balcony, PES, open to sky yard and strata void where applicable. Orientations and facings will differ depending on the unit you are purchasing, please refer to the key plan. Plans are not to scale and subject to change as may be required or approved by the relevant authorities. All areas are subject to final survey.



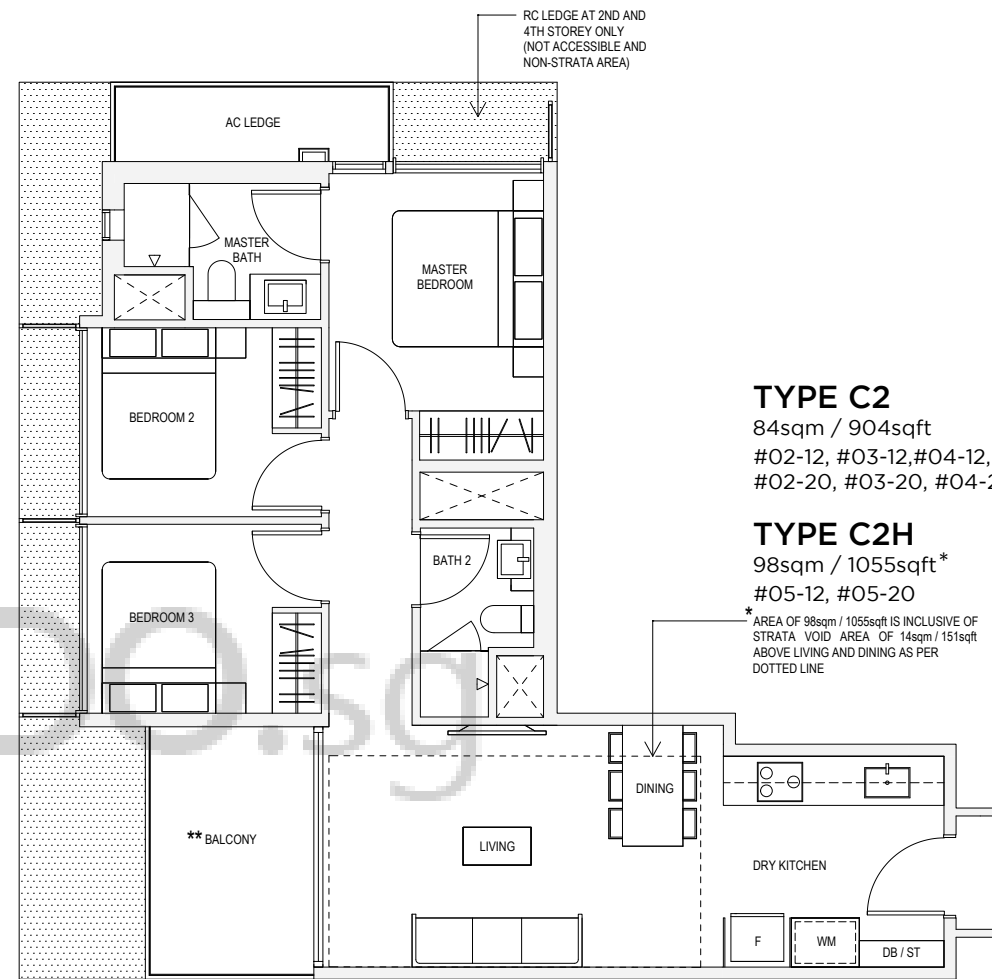
Key plan not to scale.

\*\* The PES/ balcony shall not be enclosed. Only URA approved balcony screens are to be used. For an illustration of the approved balcony screen, please refer to page 82 of this brochure

Note: Areas include A/C Ledge, balcony, PES, open to sky yard and strata void where applicable. Orientations and facings will differ depending on the unit you are purchasing, please refer to the key plan. Plans are not to scale and subject to change as may be required or approved by the relevant authorities. All areas are subject to final survey.



**TYPE C2P**  
87sqm / 936sqft  
#01-12, #01-20



**TYPE C2**  
84sqm / 904sqft  
#02-12, #03-12, #04-12,  
#02-20, #03-20, #04-20

**TYPE C2H**  
98sqm / 1055sqft\*  
#05-12, #05-20

\* AREA OF 98sqm / 1055sqft IS INCLUSIVE OF STRATA VOID AREA OF 14sqm / 151sqft ABOVE LIVING AND DINING AS PER DOTTED LINE



Key plan not to scale.

\*\* The PES/ balcony shall not be enclosed. Only URA approved balcony screens are to be used. For an illustration of the approved balcony screen, please refer to page 82 of this brochure

Note: Areas include A/C Ledge, balcony, PES, open to sky yard and strata void where applicable. Orientations and facings will differ depending on the unit you are purchasing, please refer to the key plan. Plans are not to scale and subject to change as may be required or approved by the relevant authorities. All areas are subject to final survey.



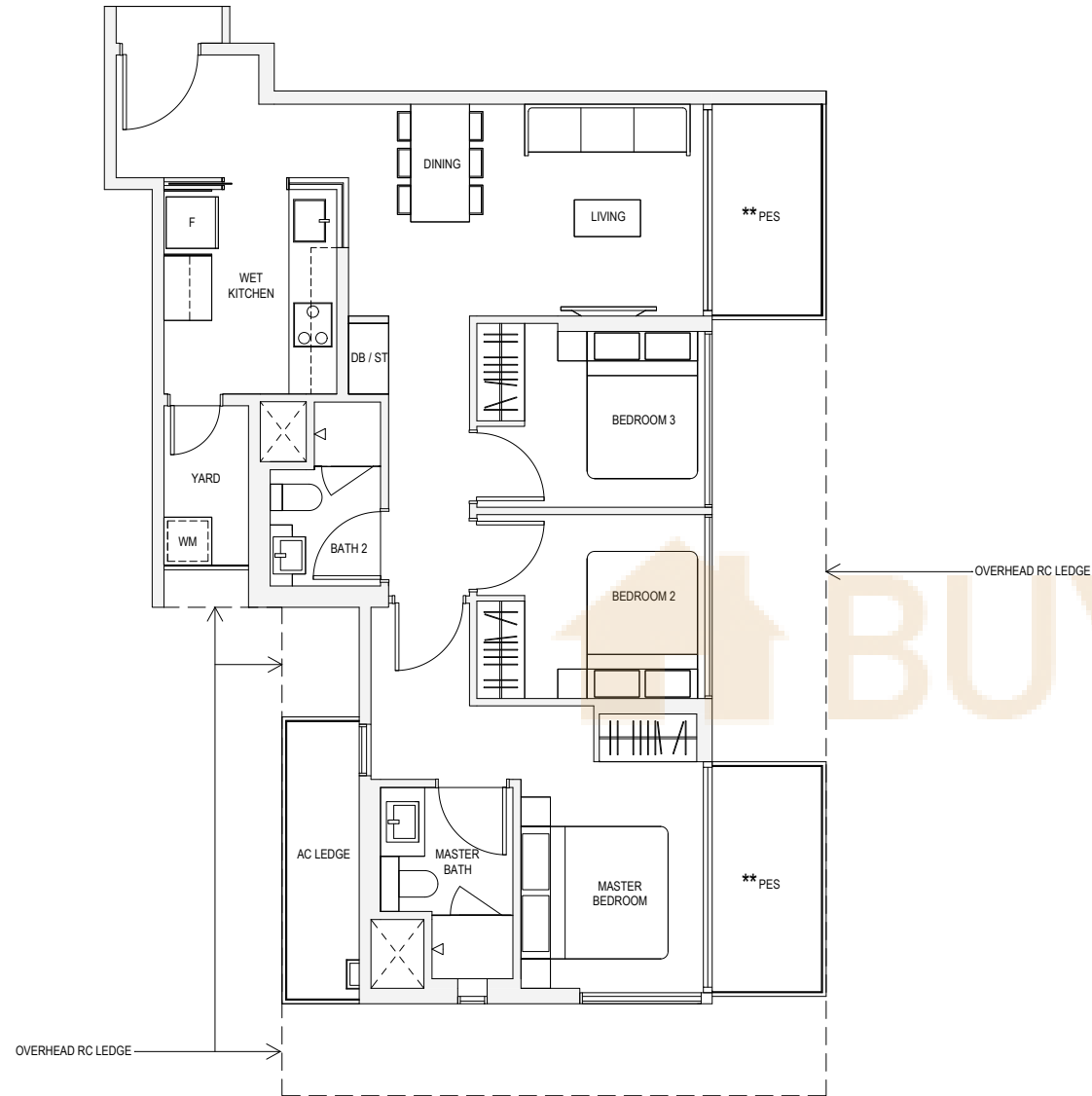
Key plan not to scale.

\*\* The PES/ balcony shall not be enclosed. Only URA approved balcony screens are to be used. For an illustration of the approved balcony screen, please refer to page 82 of this brochure

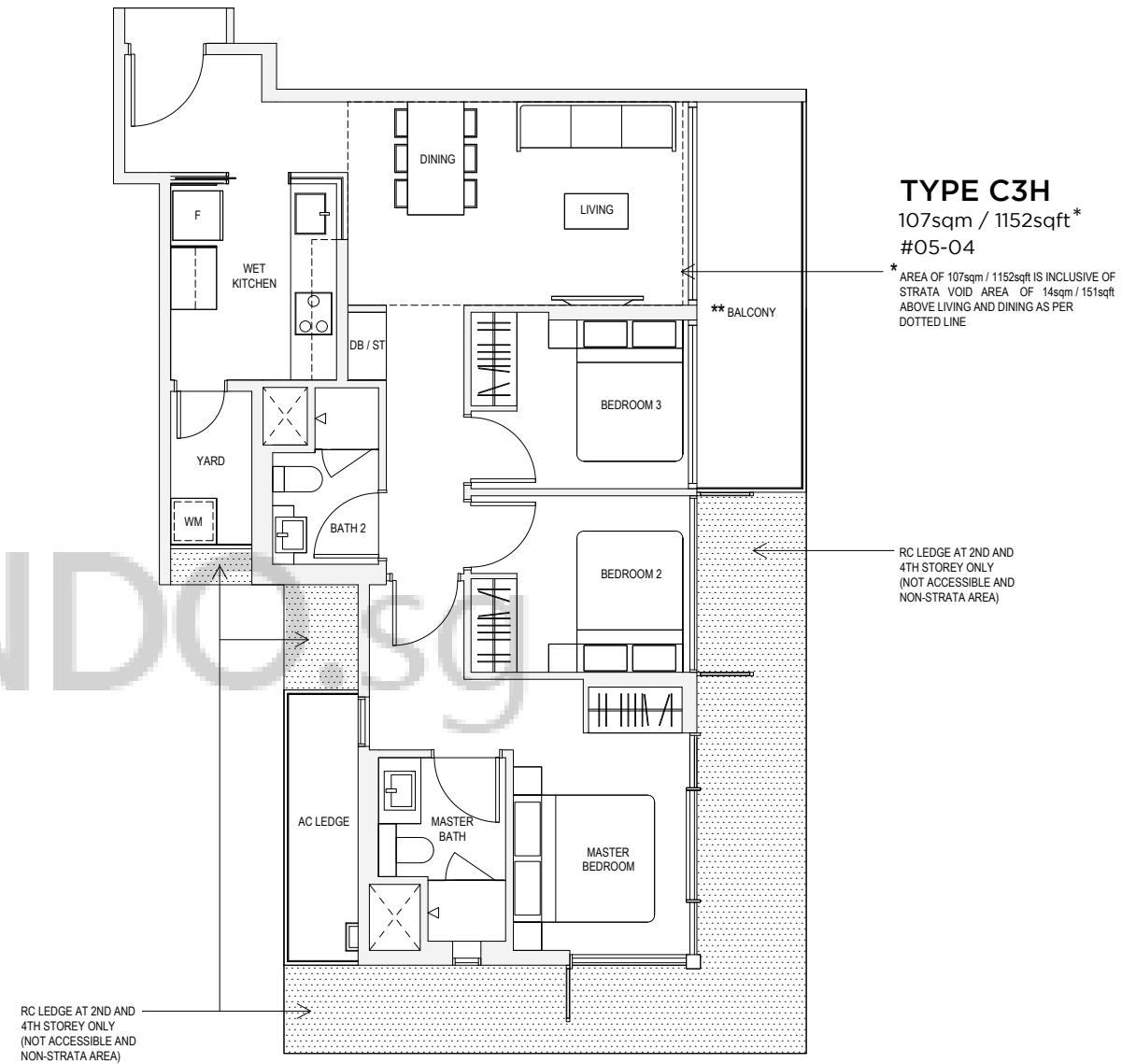
Note: Areas include A/C Ledge, balcony, PES, open to sky yard and strata void where applicable. Orientations and facings will differ depending on the unit you are purchasing, please refer to the key plan. Plans are not to scale and subject to change as may be required or approved by the relevant authorities. All areas are subject to final survey.



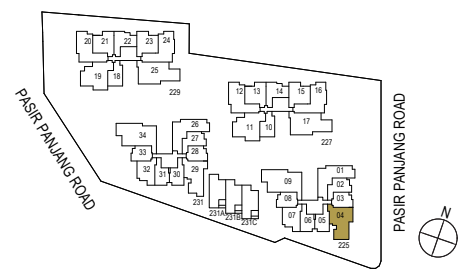
**TYPE C3P**  
93sqm / 1001sqft  
#01-04



**TYPE C3**  
93sqm / 1001sqft  
#02-04, #03-04, #04-04



**TYPE C3H**  
107sqm / 1152sqft\*  
#05-04  
\* AREA OF 107sqm / 1152sqft IS INCLUSIVE OF STRATA VOID AREA OF 14sqm / 151sqft ABOVE LIVING AND DINING AS PER DOTTED LINE



Key plan not to scale.

\*\* The PES/ balcony shall not be enclosed. Only URA approved balcony screens are to be used. For an illustration of the approved balcony screen, please refer to page 82 of this brochure

Note: Areas include A/C Ledge, balcony, PES, open to sky yard and strata void where applicable. Orientations and facings will differ depending on the unit you are purchasing, please refer to the key plan. Plans are not to scale and subject to change as may be required or approved by the relevant authorities. All areas are subject to final survey.

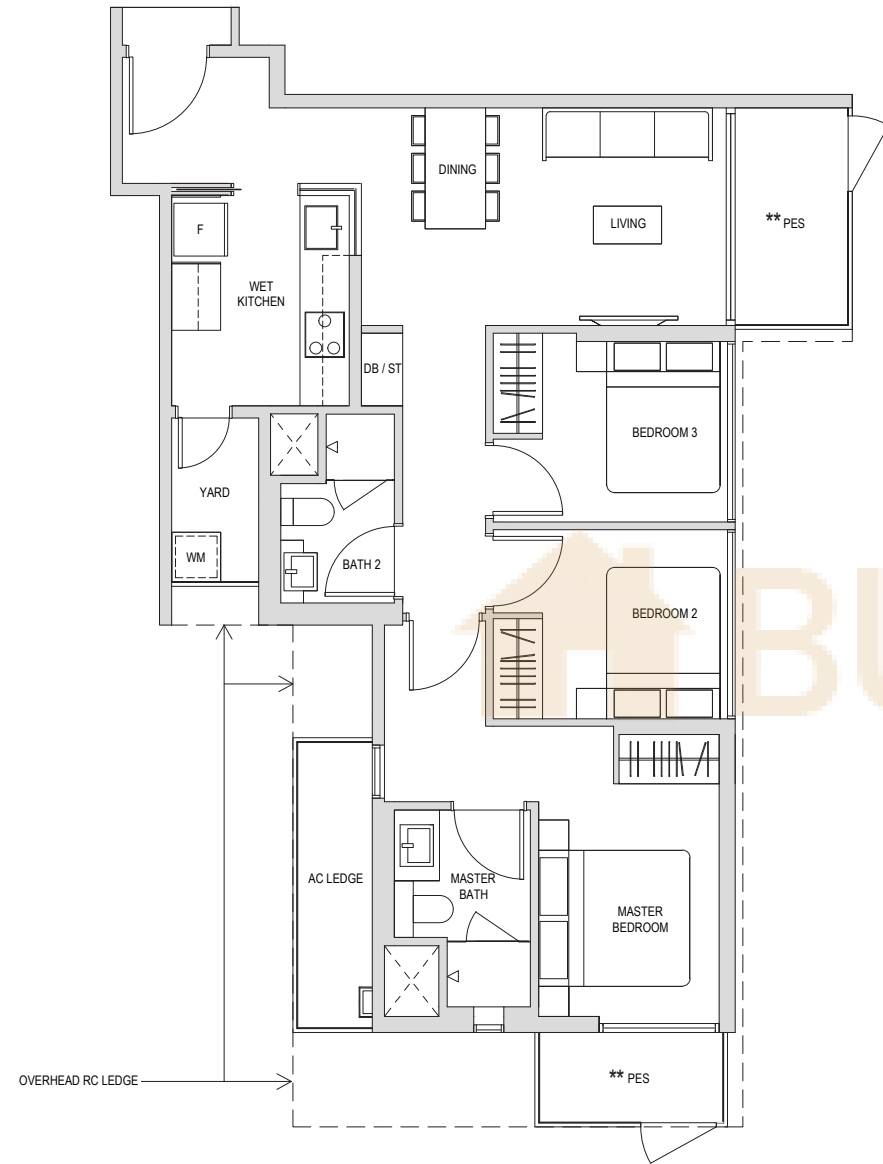


Key plan not to scale.

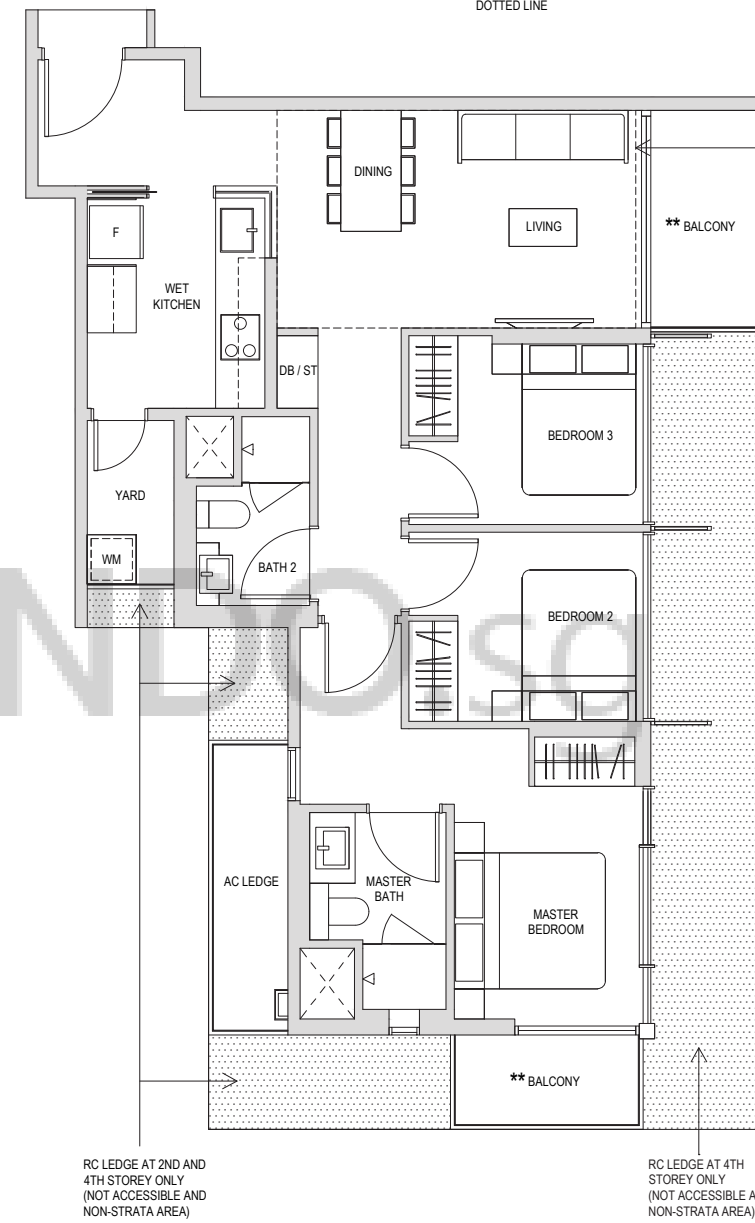
\*\* The PES/ balcony shall not be enclosed. Only URA approved balcony screens are to be used. For an illustration of the approved balcony screen, please refer to page 82 of this brochure

Note: Areas include A/C Ledge, balcony, PES, open to sky yard and strata void where applicable. Orientations and facings will differ depending on the unit you are purchasing, please refer to the key plan. Plans are not to scale and subject to change as may be required or approved by the relevant authorities. All areas are subject to final survey.

**TYPE C3aP**  
92sqm / 990sqft  
#01-29



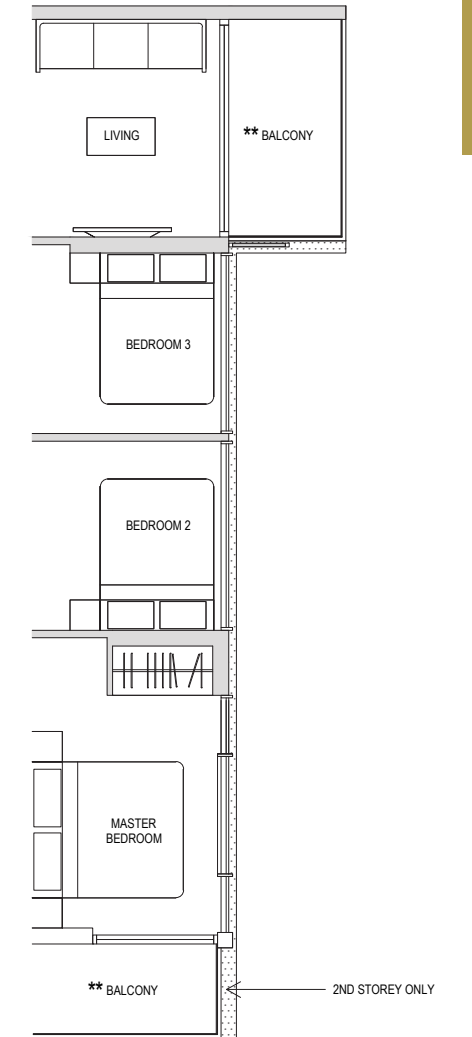
**TYPE C3a**  
92sqm / 990sqft  
#04-29



**TYPE C3aH**  
107sqm / 1152sqft  
#05-29

\* AREA OF 107sqm / 1152sqft IS INCLUSIVE OF STRATA VOID AREA OF 14sqm / 151sqft ABOVE LIVING AND DINING AS PER DOTTED LINE

**TYPE C3a**  
92sqm / 990sqft  
#02-29, #03-29



Key plan not to scale.

\*\* The PES/ balcony shall not be enclosed. Only URA approved balcony screens are to be used. For an illustration of the approved balcony screen, please refer to page 82 of this brochure

Note: Areas include A/C Ledge, balcony, PES, open to sky yard and strata void where applicable. Orientations and facings will differ depending on the unit you are purchasing, please refer to the key plan. Plans are not to scale and subject to change as may be required or approved by the relevant authorities. All areas are subject to final survey.

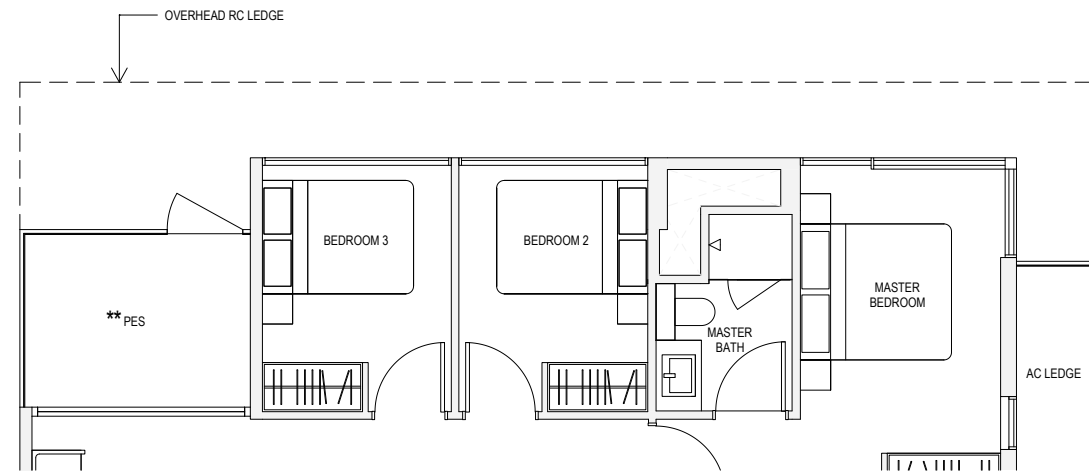


Key plan not to scale.

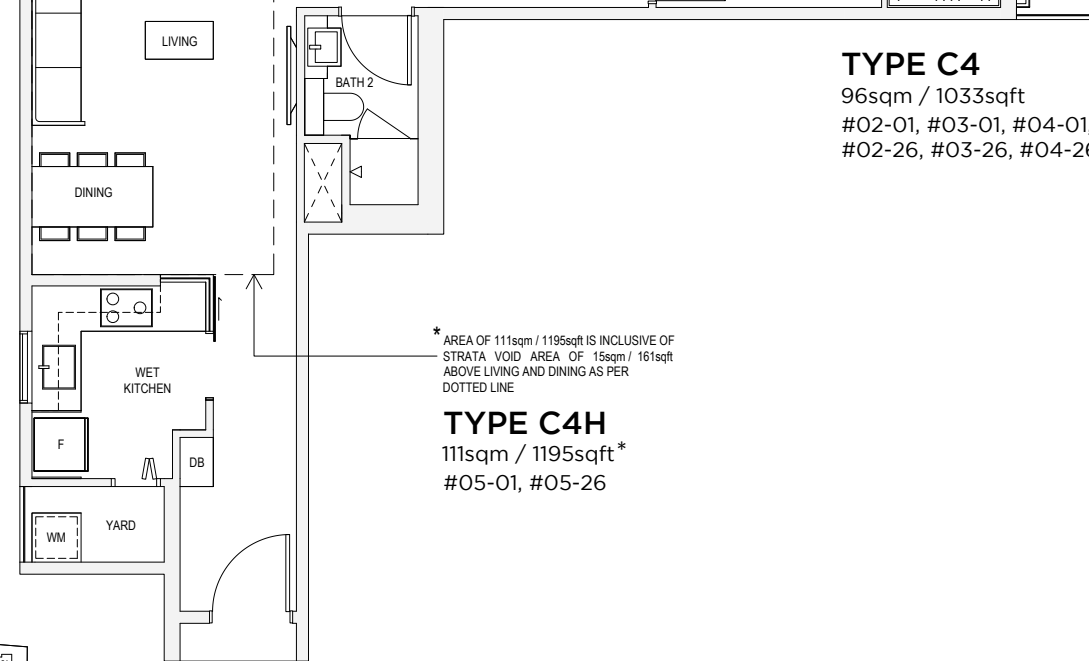
\*\* The PES/ balcony shall not be enclosed. Only URA approved balcony screens are to be used. For an illustration of the approved balcony screen, please refer to page 82 of this brochure

Note: Areas include A/C Ledge, balcony, PES, open to sky yard and strata void where applicable. Orientations and facings will differ depending on the unit you are purchasing, please refer to the key plan. Plans are not to scale and subject to change as may be required or approved by the relevant authorities. All areas are subject to final survey.

**TYPE C4P**  
96sqm / 1033sqft  
#01-26



**TYPE C4**  
96sqm / 1033sqft  
#02-01, #03-01, #04-01,  
#02-26, #03-26, #04-26



\* AREA OF 111sqm / 1195sqft IS INCLUSIVE OF STRATA VOID AREA OF 15sqm / 161sqft ABOVE LIVING AND DINING AS PER DOTTED LINE

**TYPE C4H**  
111sqm / 1195sqft\*  
#05-01, #05-26

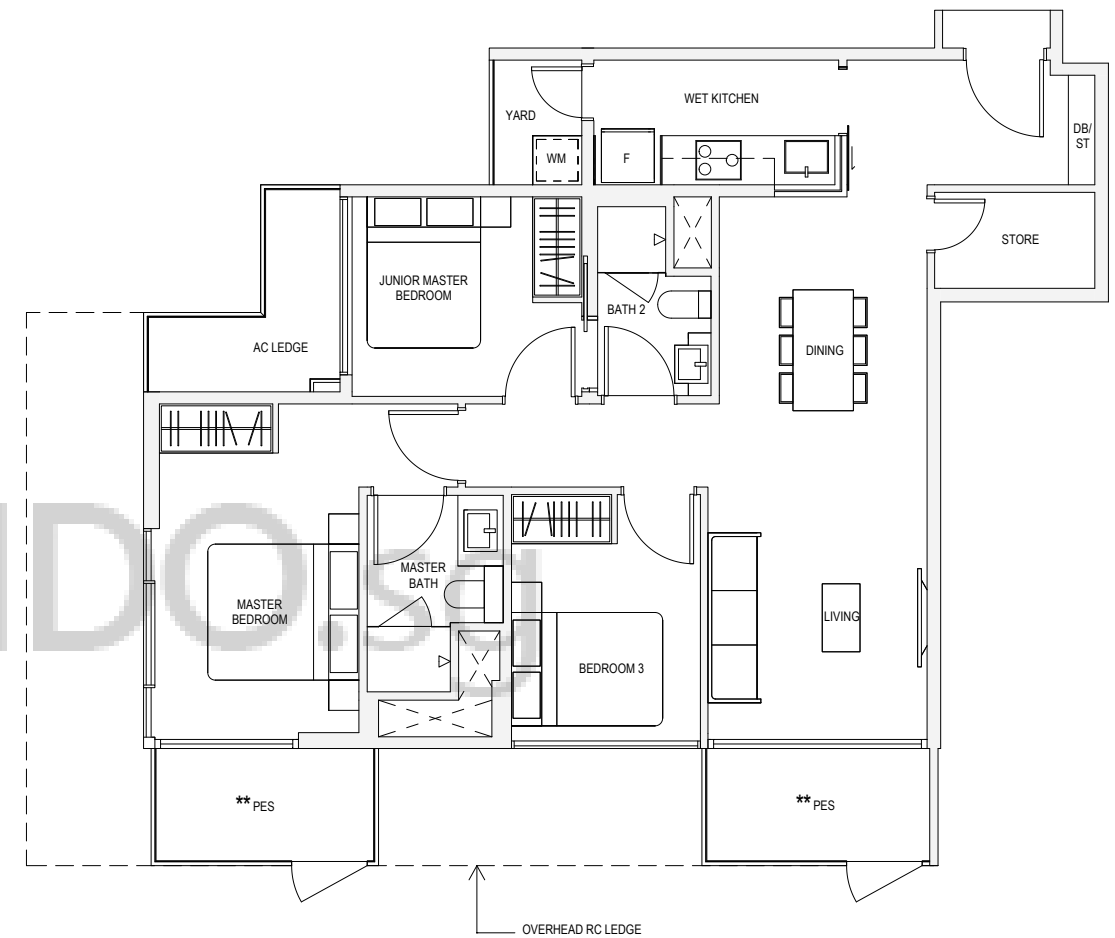


Key plan not to scale.

\*\* The PES/ balcony shall not be enclosed. Only URA approved balcony screens are to be used. For an illustration of the approved balcony screen, please refer to page 82 of this brochure

Note: Areas include A/C Ledge, balcony, PES, open to sky yard and strata void where applicable. Orientations and facings will differ depending on the unit you are purchasing, please refer to the key plan. Plans are not to scale and subject to change as may be required or approved by the relevant authorities. All areas are subject to final survey.

**TYPE C5P**  
101sqm / 1087sqft  
#01-11



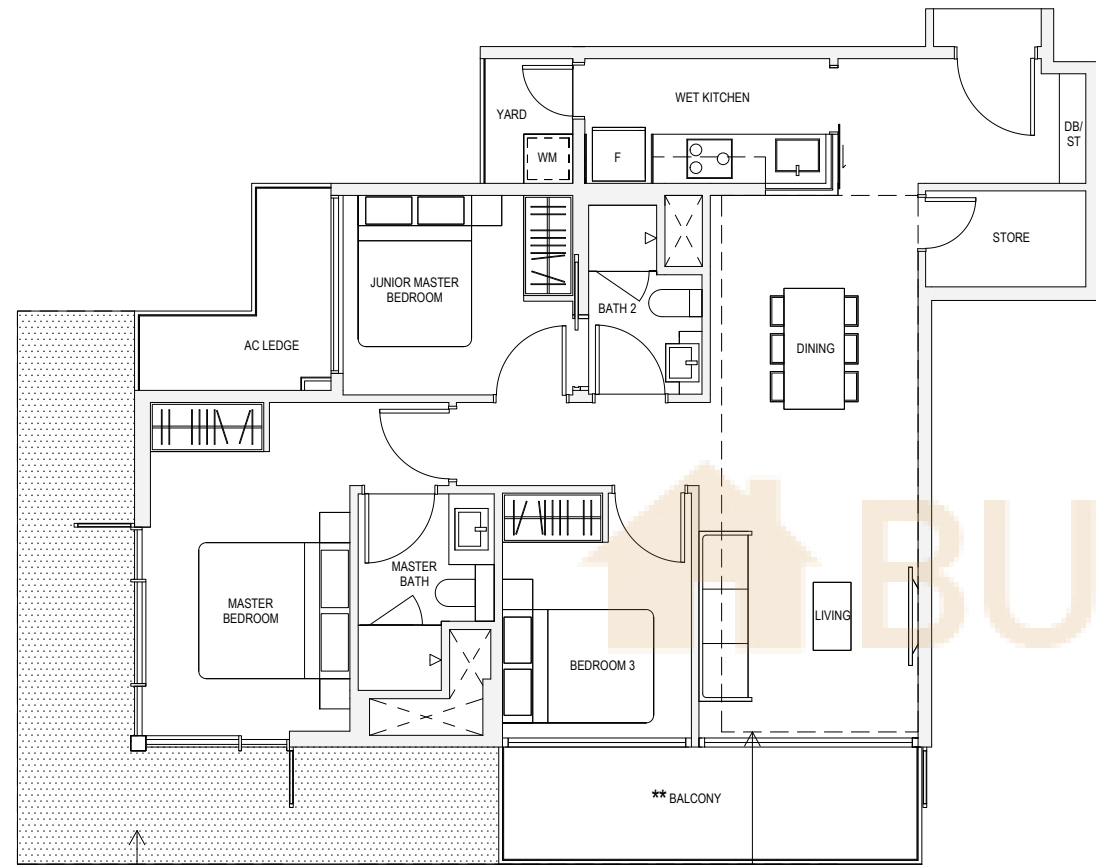
Key plan not to scale.

\*\* The PES/ balcony shall not be enclosed. Only URA approved balcony screens are to be used. For an illustration of the approved balcony screen, please refer to page 82 of this brochure

Note: Areas include A/C Ledge, balcony, PES, open to sky yard and strata void where applicable. Orientations and facings will differ depending on the unit you are purchasing, please refer to the key plan. Plans are not to scale and subject to change as may be required or approved by the relevant authorities. All areas are subject to final survey.

**TYPE C5**

101sqm / 1087sqft  
#02-11, #03-11, #04-11



RC LEDGE AT 2ND AND 4TH STOREY ONLY (NOT ACCESSIBLE AND NON-STRATA AREA)

\* AREA OF 120sqm / 1292sqft IS INCLUSIVE OF STRATA VOID AREA OF 19sqm / 205sqft ABOVE LIVING AND DINING AS PER DOTTED LINE

**TYPE C5H**

120sqm / 1292sqft\*  
#05-11



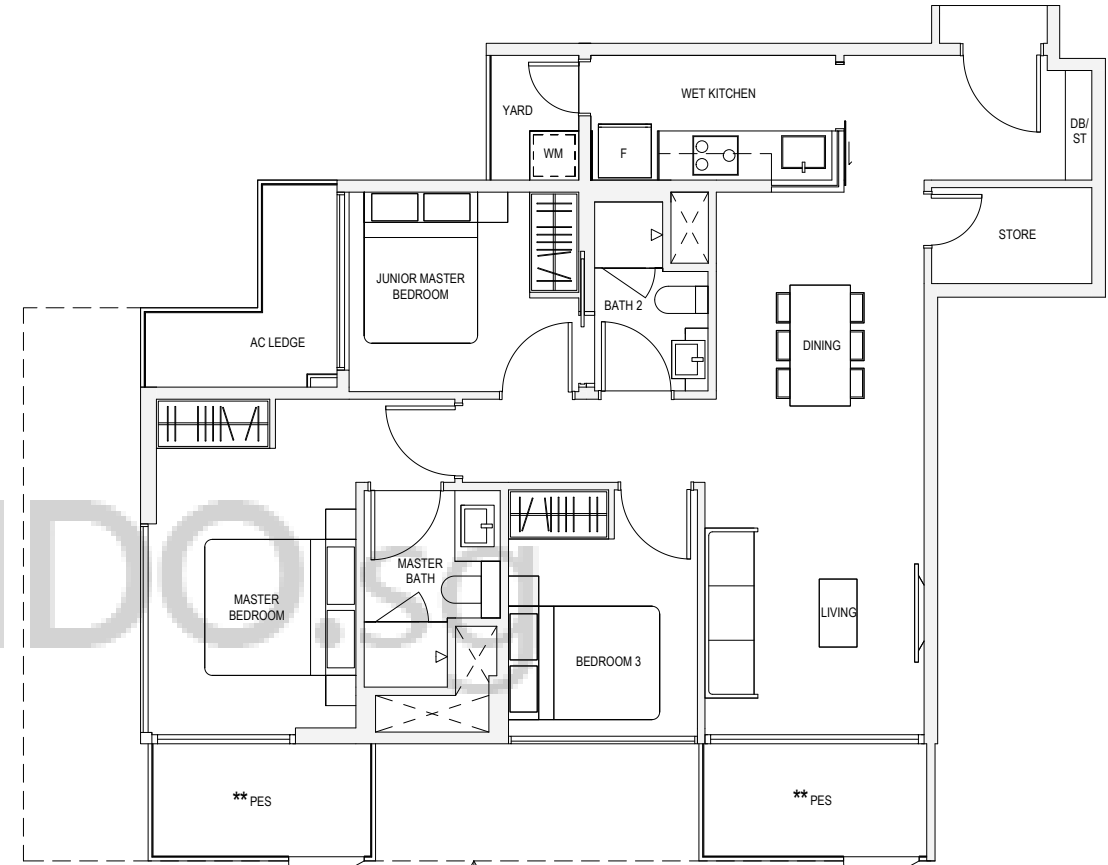
Key plan not to scale.

\*\* The PES/ balcony shall not be enclosed. Only URA approved balcony screens are to be used. For an illustration of the approved balcony screen, please refer to page 82 of this brochure

Note: Areas include A/C Ledge, balcony, PES, open to sky yard and strata void where applicable. Orientations and facings will differ depending on the unit you are purchasing, please refer to the key plan. Plans are not to scale and subject to change as may be required or approved by the relevant authorities. All areas are subject to final survey.

**TYPE C5aP**

101sqm / 1087sqft  
#01-19



OVERHEAD RC LEDGE



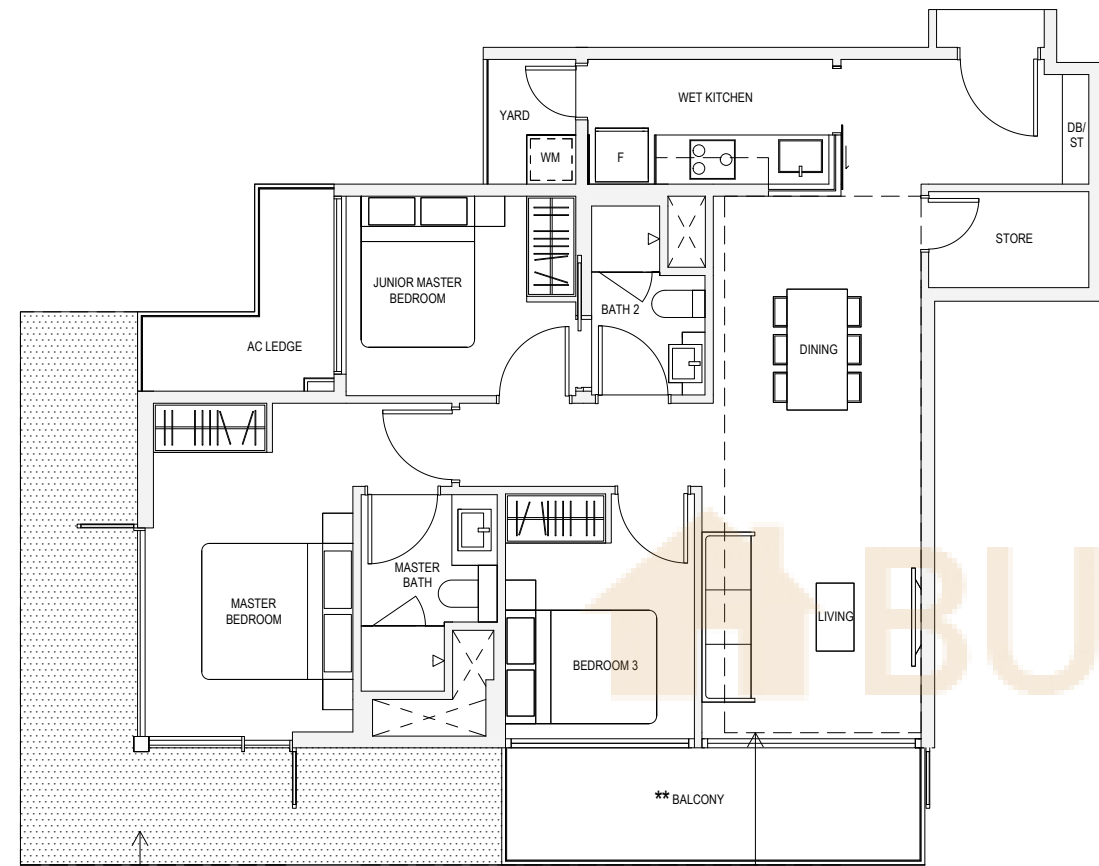
Key plan not to scale.

\*\* The PES/ balcony shall not be enclosed. Only URA approved balcony screens are to be used. For an illustration of the approved balcony screen, please refer to page 82 of this brochure

Note: Areas include A/C Ledge, balcony, PES, open to sky yard and strata void where applicable. Orientations and facings will differ depending on the unit you are purchasing, please refer to the key plan. Plans are not to scale and subject to change as may be required or approved by the relevant authorities. All areas are subject to final survey.

**TYPE C5a**

101sqm / 1087sqft  
#02-19, #03-19, #04-19



RC LEDGE AT 2ND AND 4TH STOREY ONLY (NOT ACCESSIBLE AND NON-STRATA AREA)

\* AREA OF 120sqm / 1292sqft IS INCLUSIVE OF STRATA VOID AREA OF 19sqm / 205sqft ABOVE LIVING AND DINING AS PER DOTTED LINE

**TYPE C5aH**  
120sqm / 1292sqft\*  
#05-19



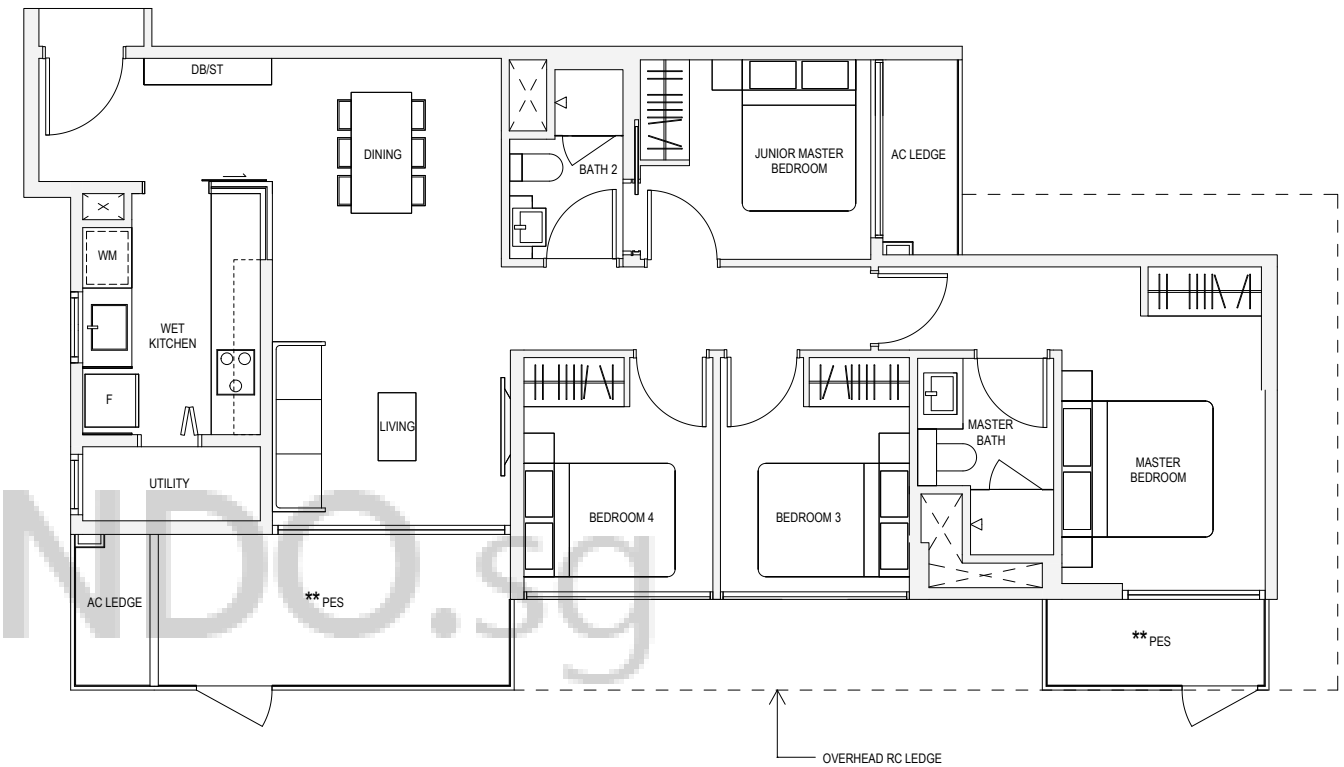
Key plan not to scale.

\*\* The PES/ balcony shall not be enclosed. Only URA approved balcony screens are to be used. For an illustration of the approved balcony screen, please refer to page 82 of this brochure

Note: Areas include A/C Ledge, balcony, PES, open to sky yard and strata void where applicable. Orientations and facings will differ depending on the unit you are purchasing, please refer to the key plan. Plans are not to scale and subject to change as may be required or approved by the relevant authorities. All areas are subject to final survey.

**TYPE D1P**

116sqm / 1249sqft  
#01-17, #01-25



OVERHEAD RC LEDGE



Key plan not to scale.

\*\* The PES/ balcony shall not be enclosed. Only URA approved balcony screens are to be used. For an illustration of the approved balcony screen, please refer to page 82 of this brochure

Note: Areas include A/C Ledge, balcony, PES, open to sky yard and strata void where applicable. Orientations and facings will differ depending on the unit you are purchasing, please refer to the key plan. Plans are not to scale and subject to change as may be required or approved by the relevant authorities. All areas are subject to final survey.

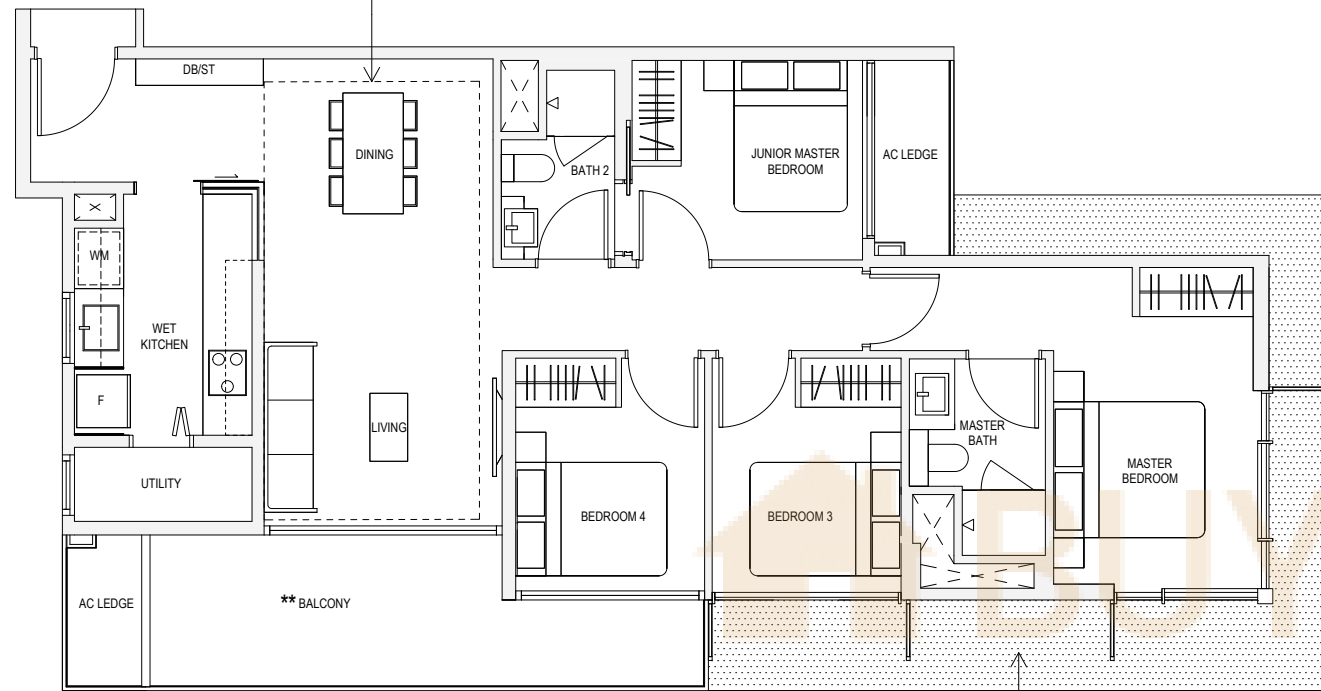
**TYPE D1**

116sqm / 1249sqft  
 #02-17, #03-17, #04-17,  
 #02-25, #03-25, #04-25

**TYPE D1H**

134sqm / 1442sqft\*  
 #05-17, #05-25

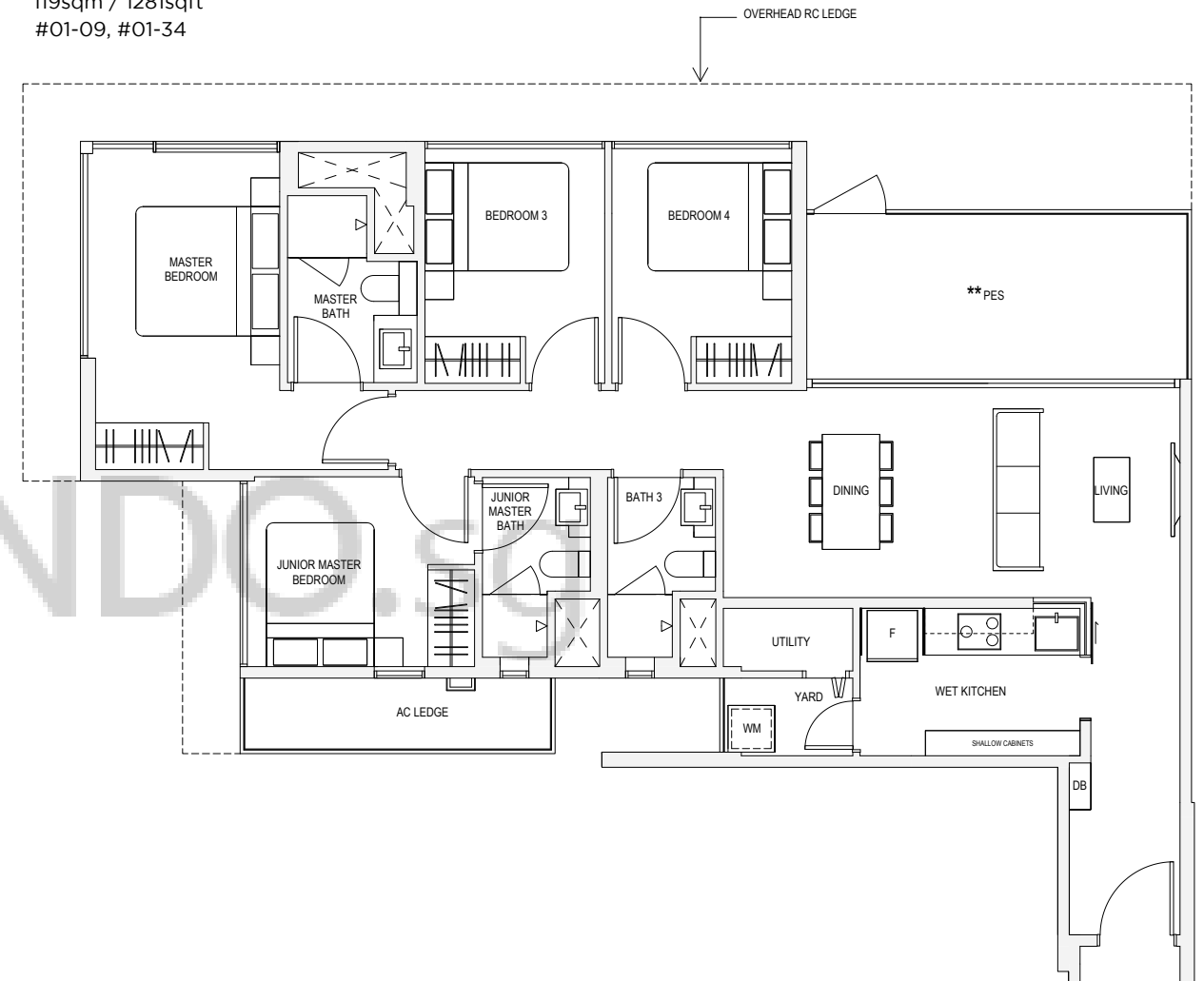
\* AREA OF 134sqm / 1442sqft IS INCLUSIVE OF STRATA VOID AREA OF 18sqm / 194sqft ABOVE LIVING AND DINING AS PER DOTTED LINE



RC LEDGE AT 2ND AND 4TH STOREY ONLY (NOT ACCESSIBLE AND NON-STRATA AREA)

**TYPE D2P**

119sqm / 1281sqft  
 #01-09, #01-34



OVERHEAD RC LEDGE



Key plan not to scale.

\*\* The PES/ balcony shall not be enclosed. Only URA approved balcony screens are to be used. For an illustration of the approved balcony screen, please refer to page 82 of this brochure

Note: Areas include A/C Ledge, balcony, PES, open to sky yard and strata void where applicable. Orientations and facings will differ depending on the unit you are purchasing, please refer to the key plan. Plans are not to scale and subject to change as may be required or approved by the relevant authorities. All areas are subject to final survey.



Key plan not to scale.

\*\* The PES/ balcony shall not be enclosed. Only URA approved balcony screens are to be used. For an illustration of the approved balcony screen, please refer to page 82 of this brochure

Note: Areas include A/C Ledge, balcony, PES, open to sky yard and strata void where applicable. Orientations and facings will differ depending on the unit you are purchasing, please refer to the key plan. Plans are not to scale and subject to change as may be required or approved by the relevant authorities. All areas are subject to final survey.

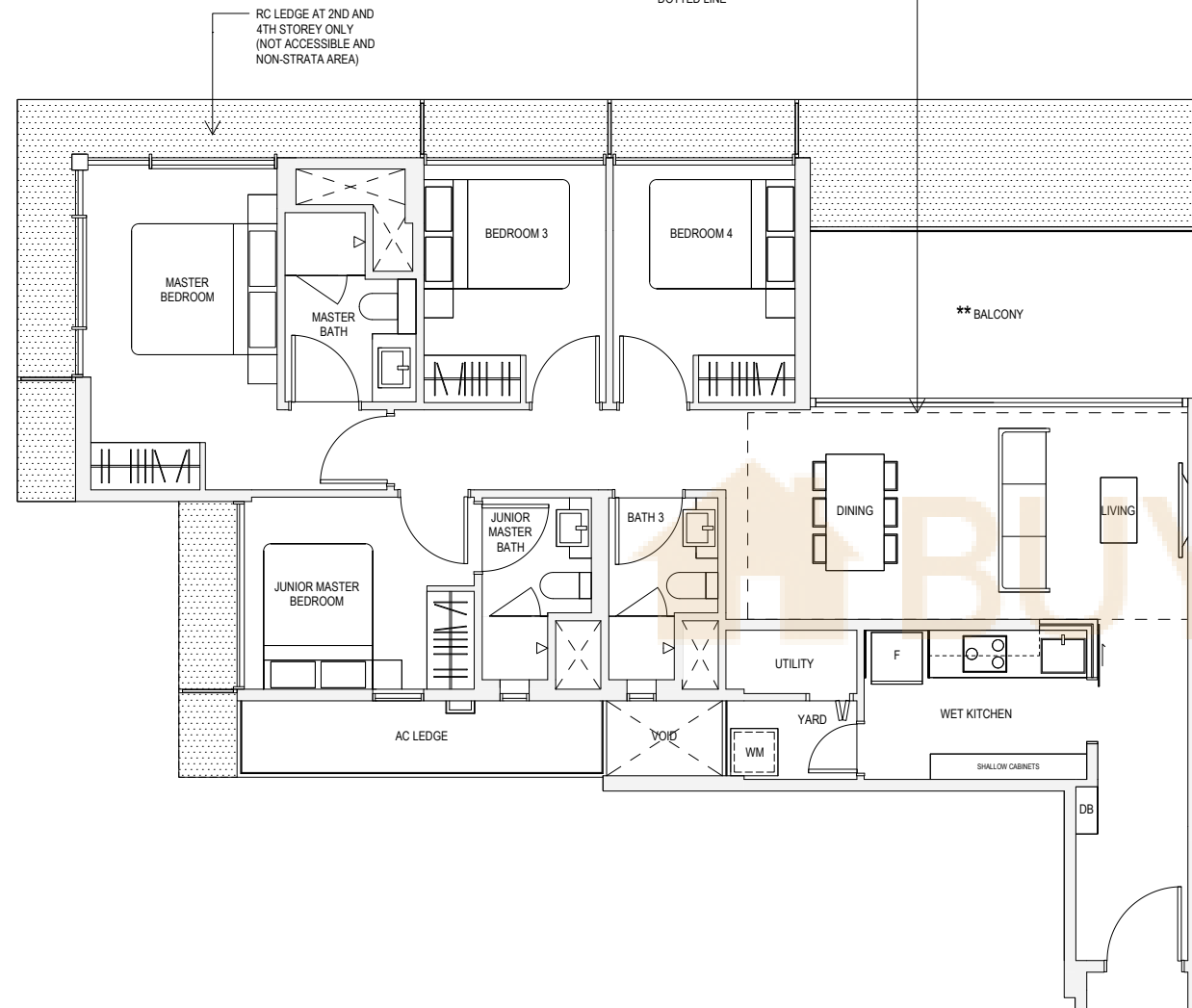
**TYPE D2**

120sqm / 1292sqft  
#02-09, #03-09, #04-09,

**TYPE D2H**

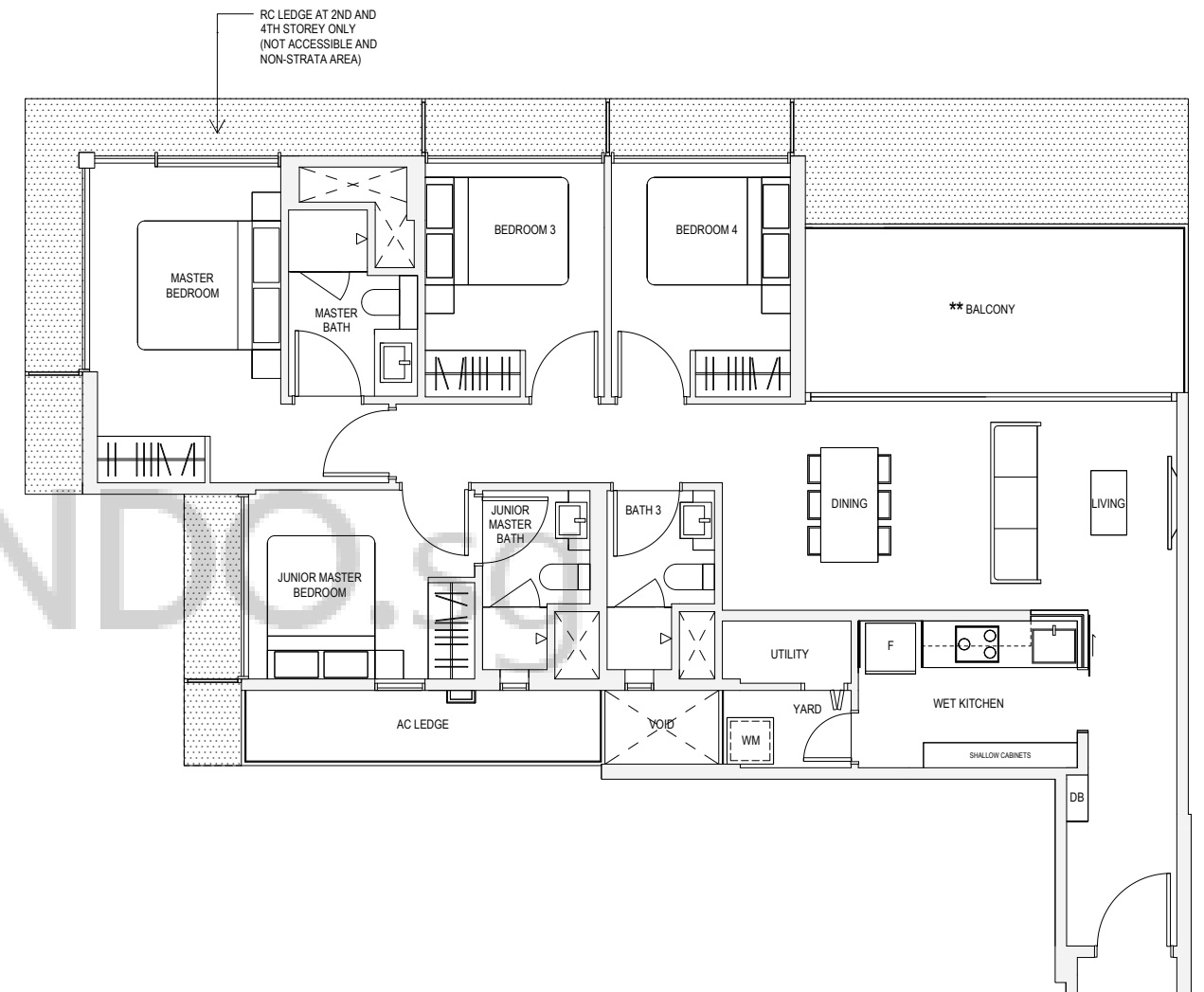
138sqm / 1485sqft\*  
#05-09

\* AREA OF 138sqm / 1485sqft IS INCLUSIVE OF STRATA VOID AREA OF 18sqm / 194sqft ABOVE LIVING AND DINING AS PER DOTTED LINE



**TYPE D2a**

120sqm / 1292sqft  
#02-34, #03-34, #04-34, #05-34



Key plan not to scale.

\*\* The PES/ balcony shall not be enclosed. Only URA approved balcony screens are to be used. For an illustration of the approved balcony screen, please refer to page 82 of this brochure

Note: Areas include A/C Ledge, balcony, PES, open to sky yard and strata void where applicable. Orientations and facings will differ depending on the unit you are purchasing, please refer to the key plan. Plans are not to scale and subject to change as may be required or approved by the relevant authorities. All areas are subject to final survey.



Key plan not to scale.

\*\* The PES/ balcony shall not be enclosed. Only URA approved balcony screens are to be used. For an illustration of the approved balcony screen, please refer to page 82 of this brochure

Note: Areas include A/C Ledge, balcony, PES, open to sky yard and strata void where applicable. Orientations and facings will differ depending on the unit you are purchasing, please refer to the key plan. Plans are not to scale and subject to change as may be required or approved by the relevant authorities. All areas are subject to final survey.