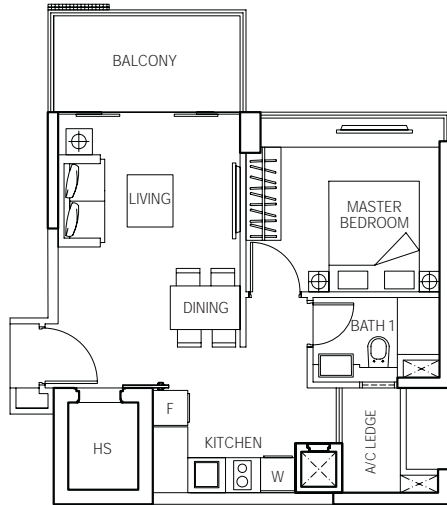


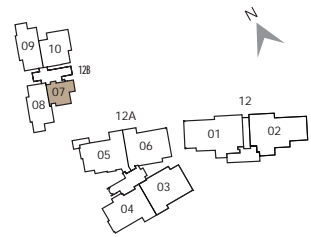
One-bedroom



TYPE S

527 sq ft

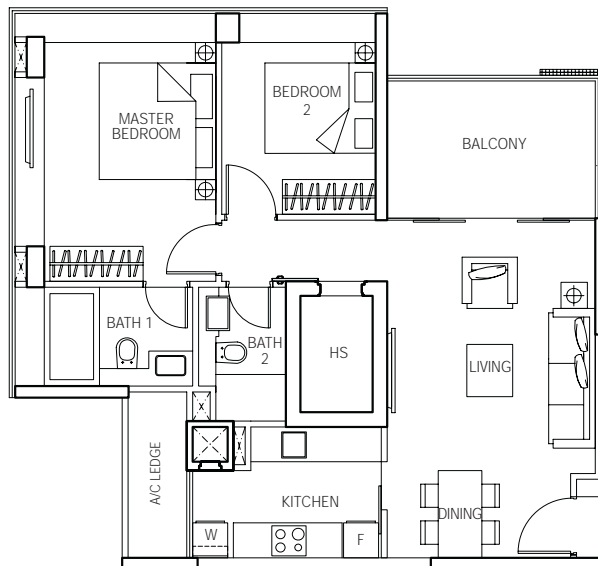
#04-07 to #18-07*



*#18-07 - Balcony opens to sky with trellises above



Two-bedroom



TYPE A1

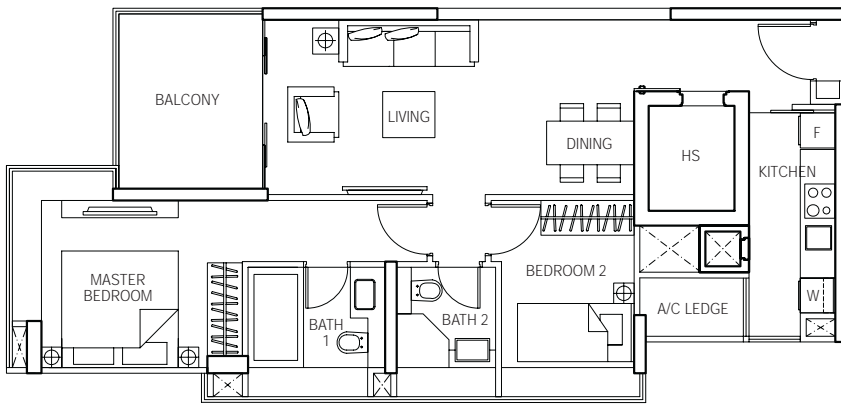
915 sq ft

#03-10 to #18-10*



*#18-10 - Balcony opens to sky with trellises above

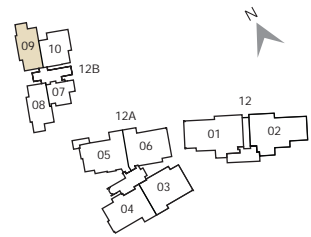
Two-bedroom



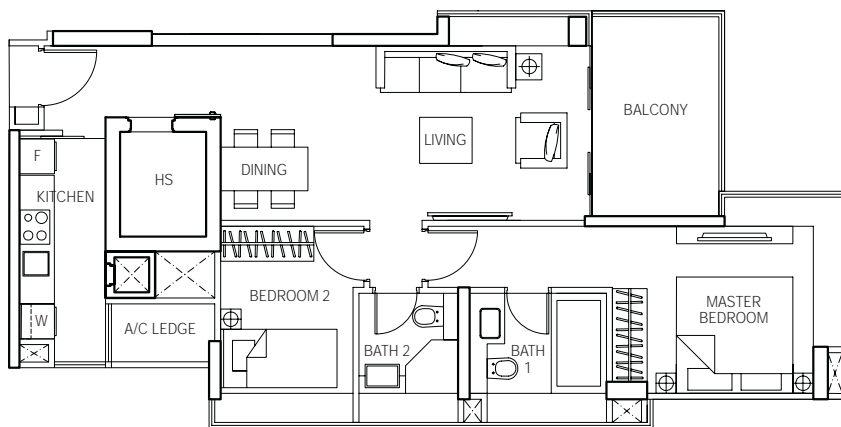
TYPE A2

883 sq ft

#03-09 to #18-09*



*#18-09 - Balcony opens to sky with trellises above



TYPE A2a

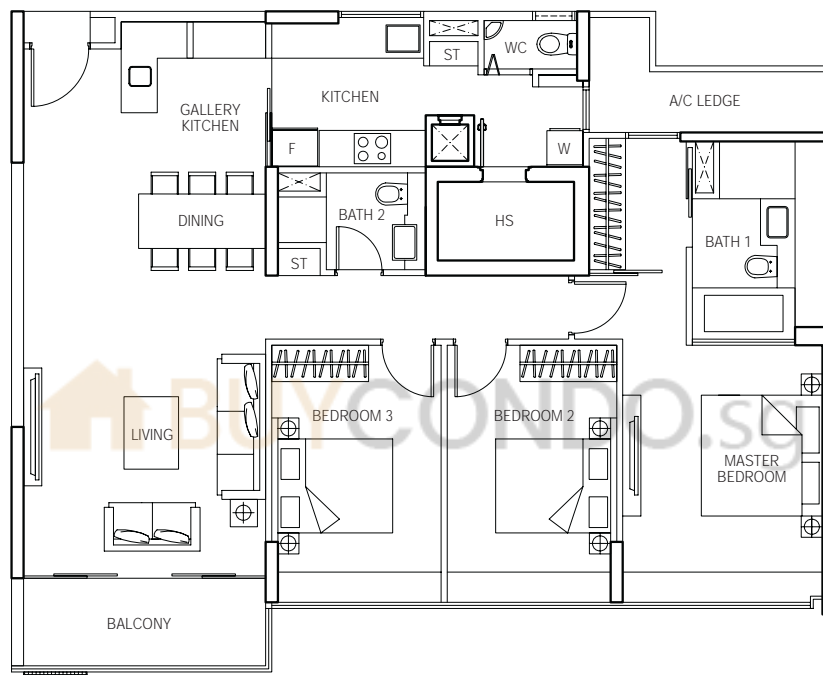
893 sq ft

#04-08 to #18-08*



*#18-08 - Balcony opens to sky with trellises above

Three-bedroom



TYPE B

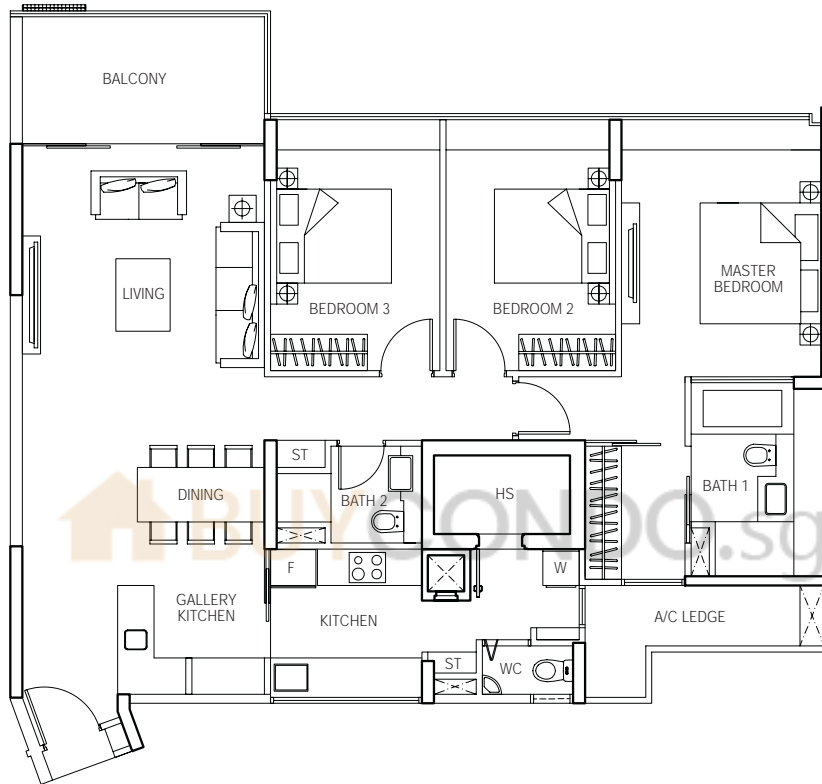
1,410 sq ft

#03-03 to #17-03*



*#17-03 - Balcony opens to sky with trellises above

Three-bedroom



TYPE B1

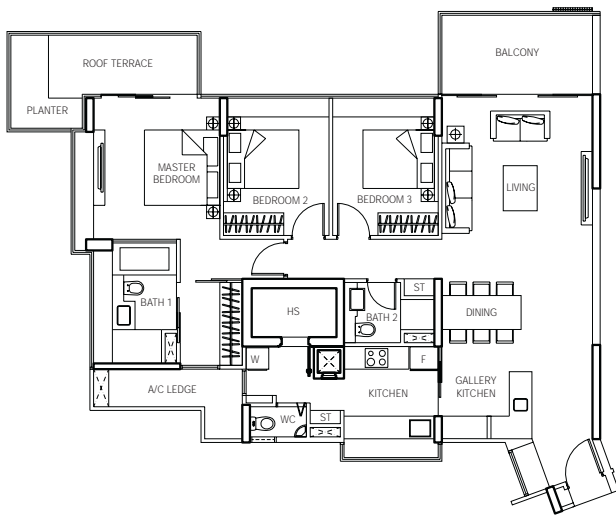
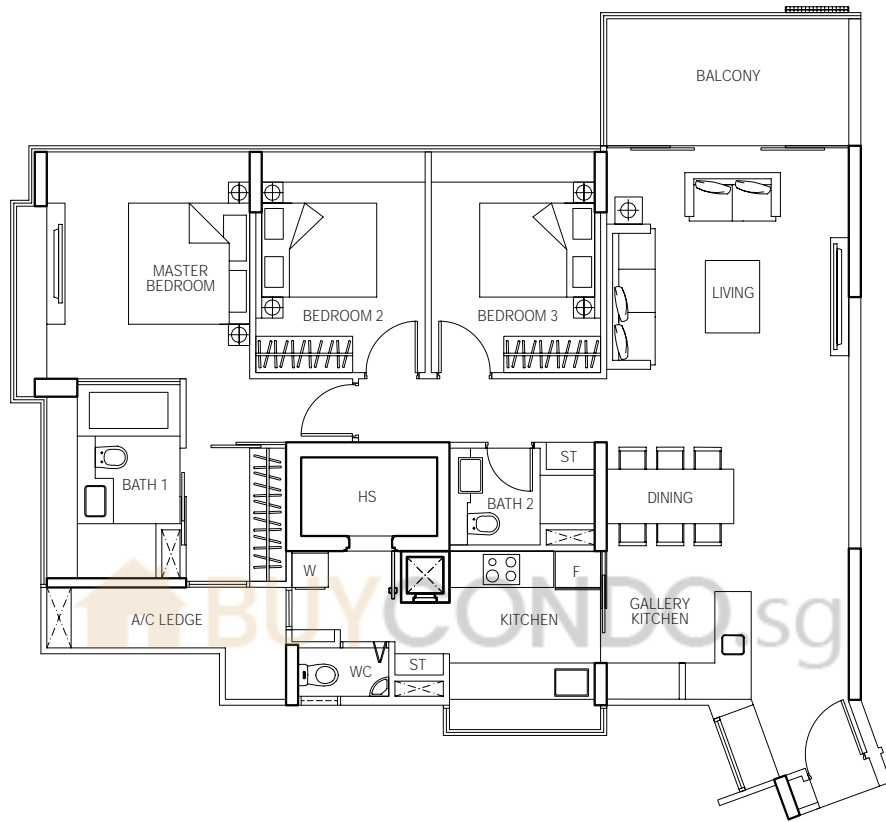
1,432 sq ft

#03-06 to #17-06*



*#17-06 - Balcony opens to sky with trellises above

Three-bedroom



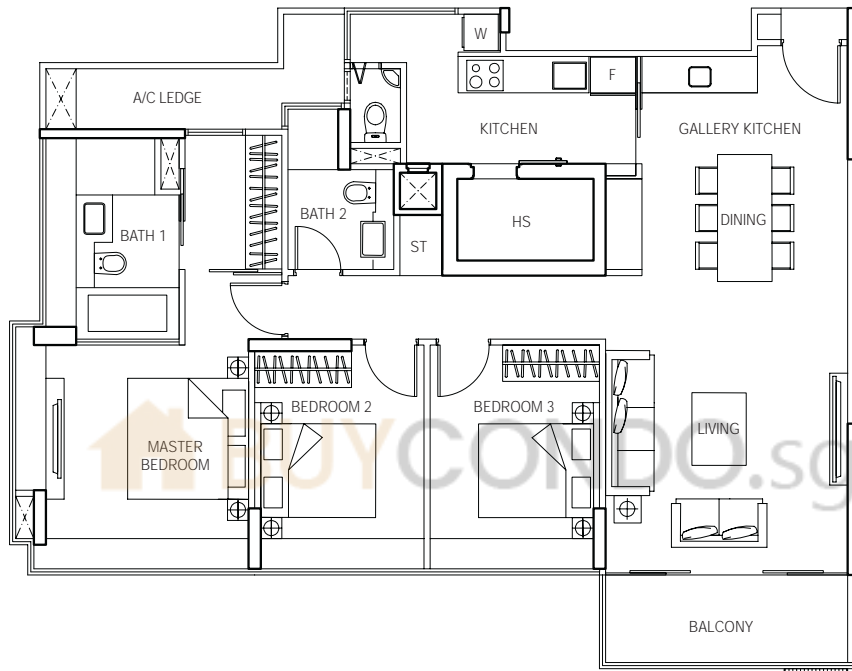
TYPE B2a
1,550 sq ft
#03-05

TYPE B2
1,442 sq ft
#04-05 to #17-05*



*#17-05 - Balcony opens to sky with trellises above

Three-bedroom



TYPE B3

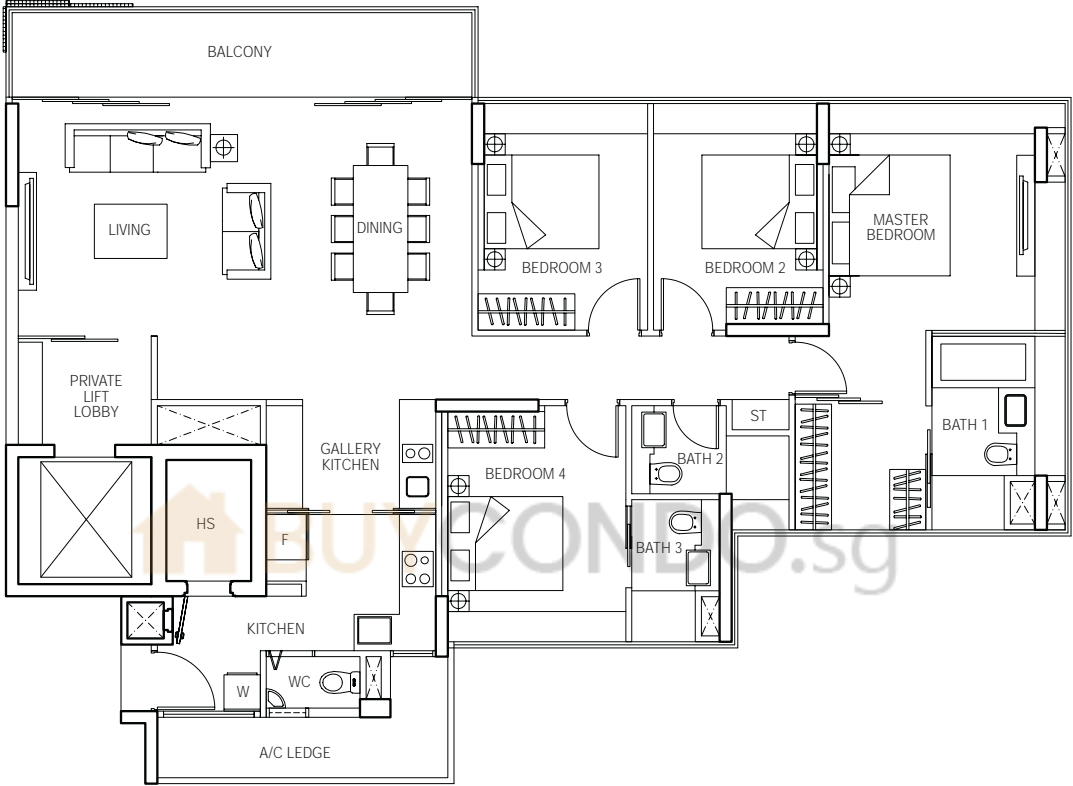
1,335 sq ft

#03-04 to #17-04*



*#17-04 - Balcony opens to sky with trellises above

Four-bedroom

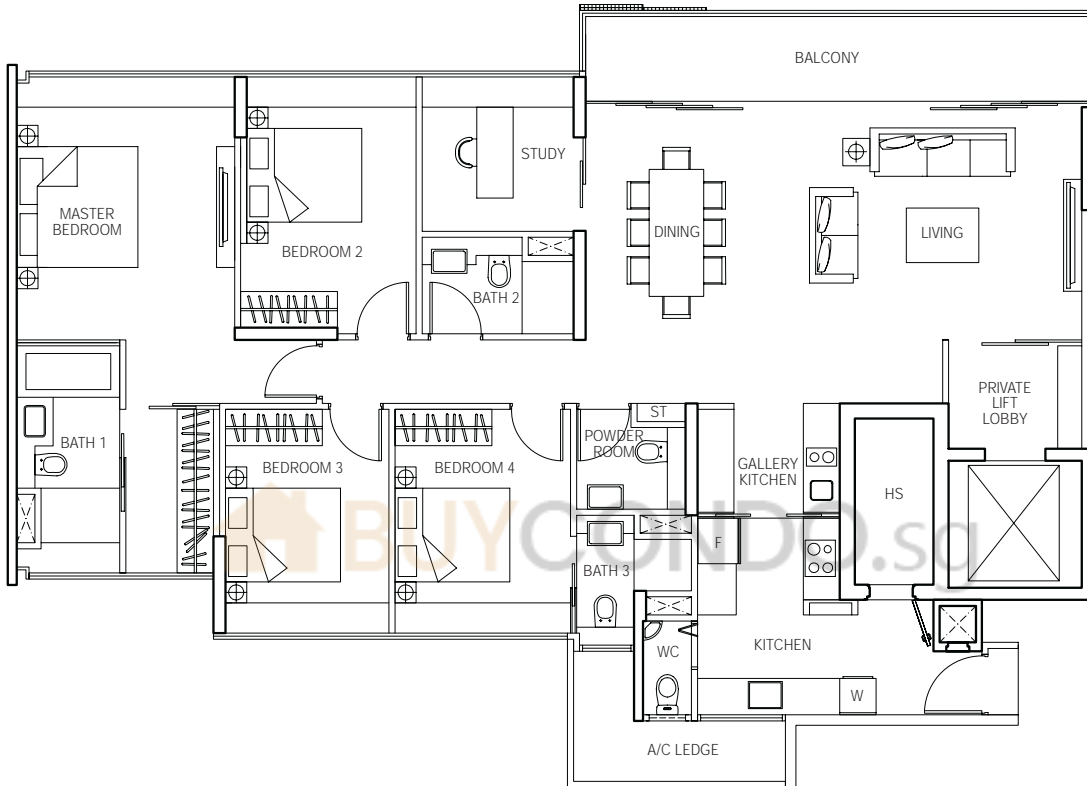


TYPE C1
 1,711 sq ft
 #04-02 to #18-02*



*#18-02 - Balcony opens to sky with trellises above

Four-bedroom + study



TYPE C2

1,884 sq ft

#04-01 to #18-01*



*#18-01 - Balcony opens to sky with trellises above