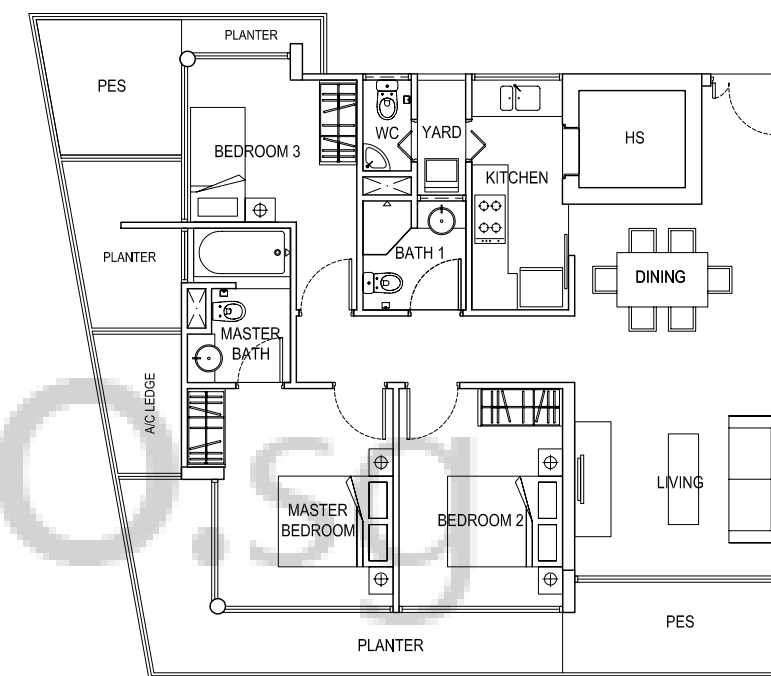


FLOOR PLANS

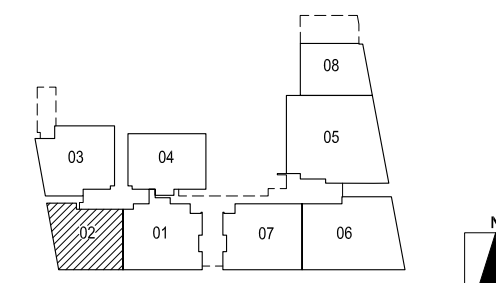


BUYCONDO.SG

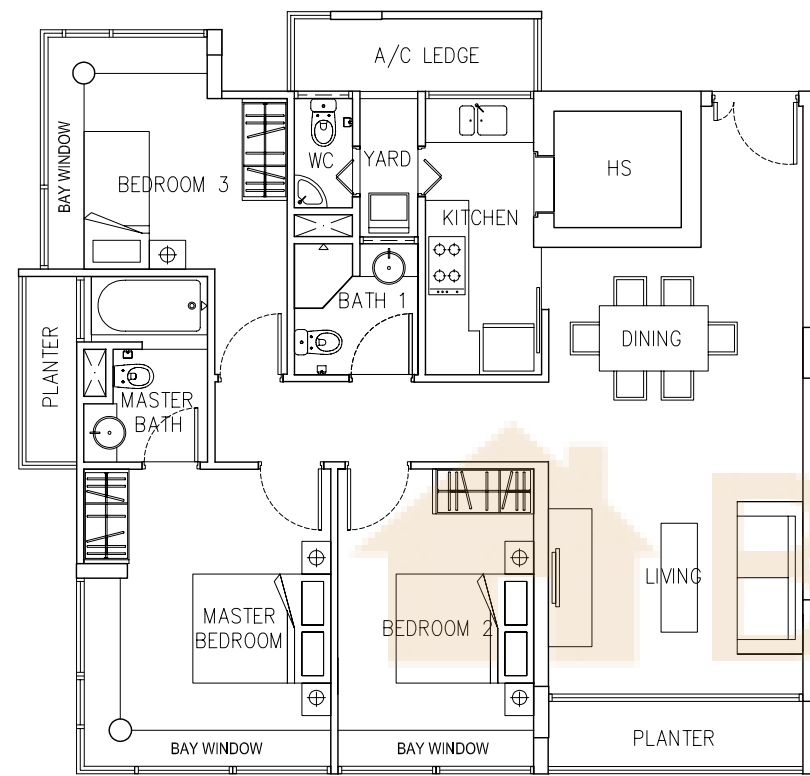


TYPE A3 - G #01-02

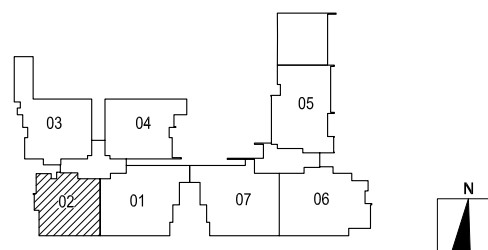
(118 sqm / 1270 sqft)



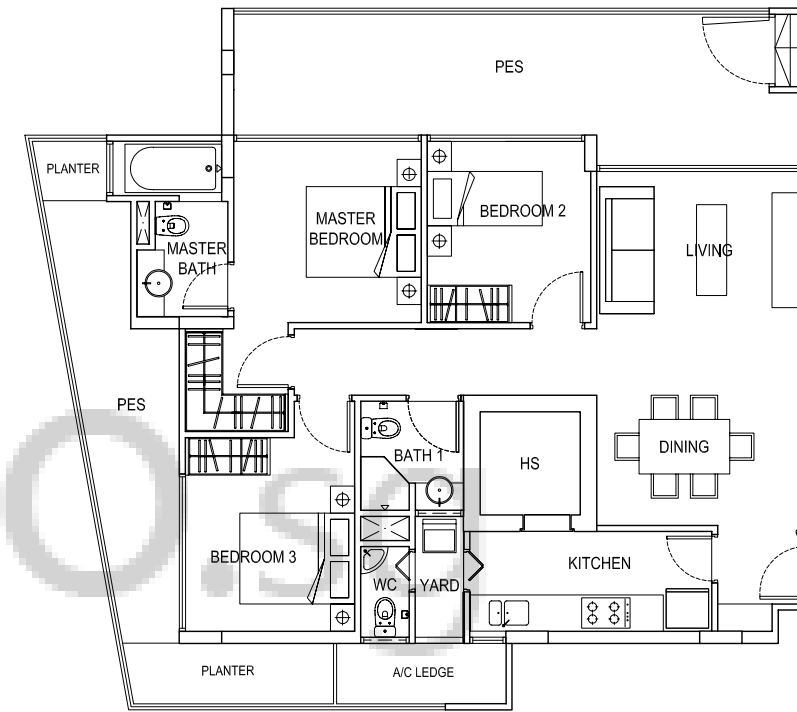
* ALL PES, BALCONIES, PLANTERS & ROOF TERRACE AREAS ARE "NOT TO BE ENCLOSED OR ROOFED OVER".



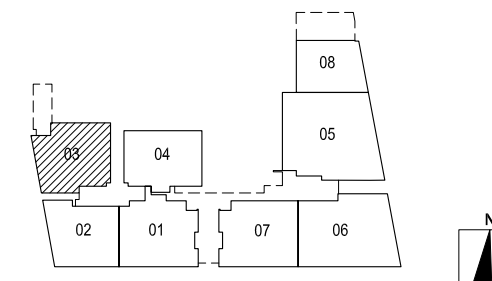
TYPE A3 #02-02, #03-02, #04-02
(102 sqm / 1098 sqft)



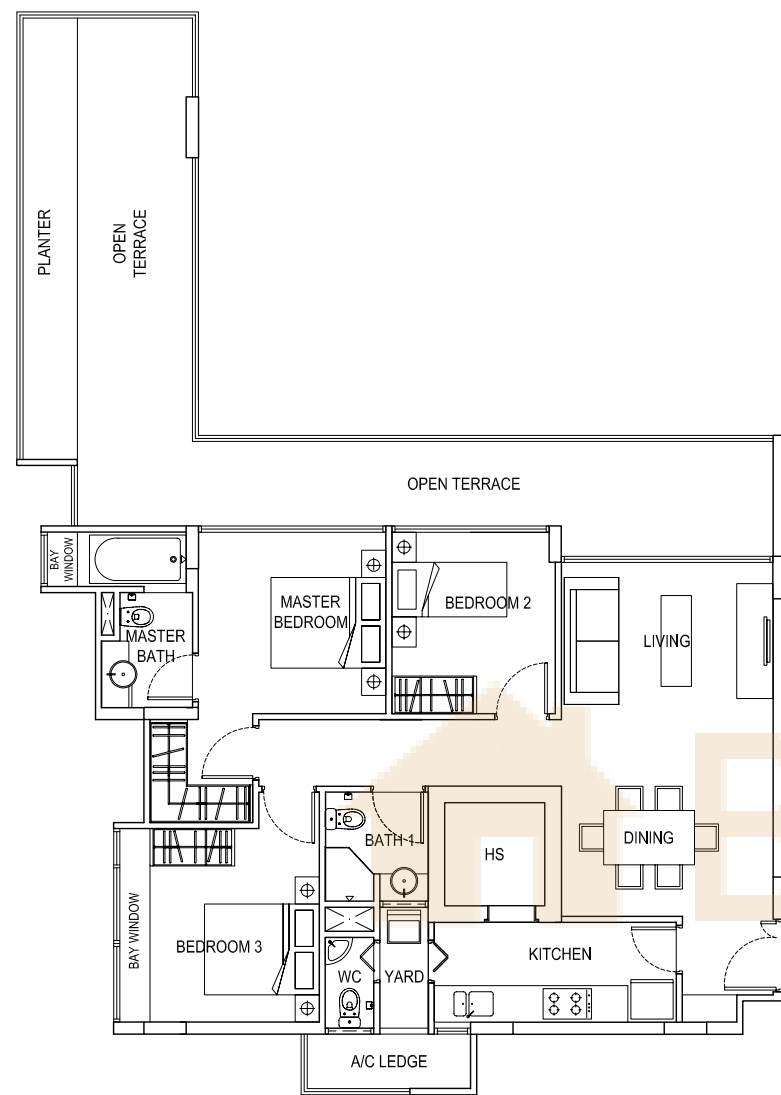
* ALL PES, BALCONIES, PLANTERS & ROOF TERRACE AREAS ARE "NOT TO BE ENCLOSED OR ROOFED OVER".



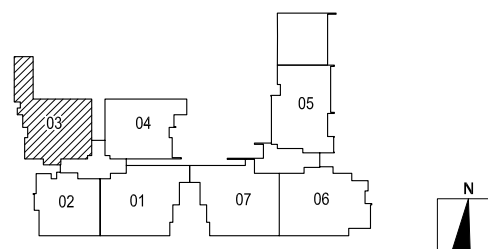
TYPE A1 - G #01-03
(128 sqm / 1378 sqft)



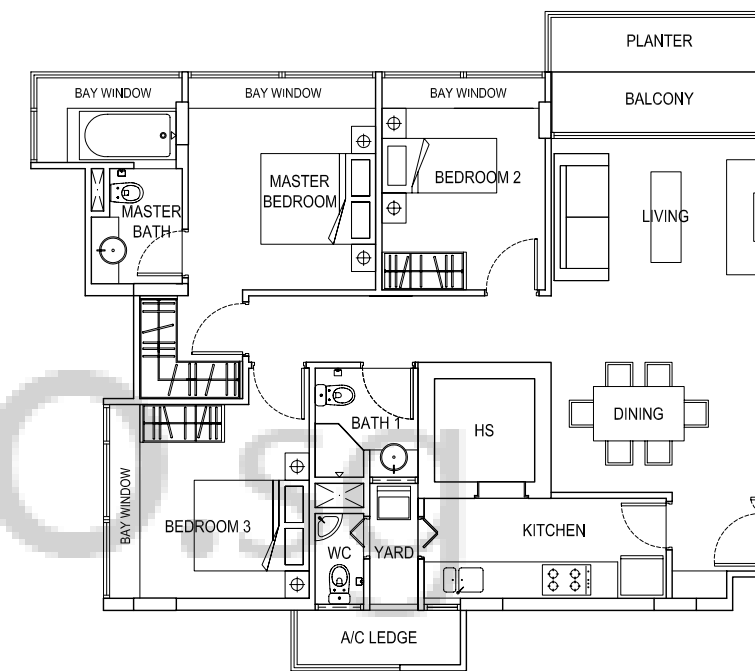
* ALL PES, BALCONIES, PLANTERS & ROOF TERRACE AREAS ARE "NOT TO BE ENCLOSED OR ROOFED OVER".



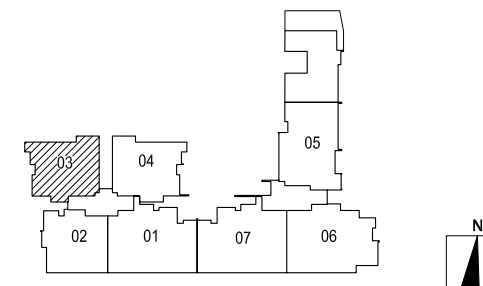
TYPE A1-2 #02-03
(132 sqm / 1421 sqft)



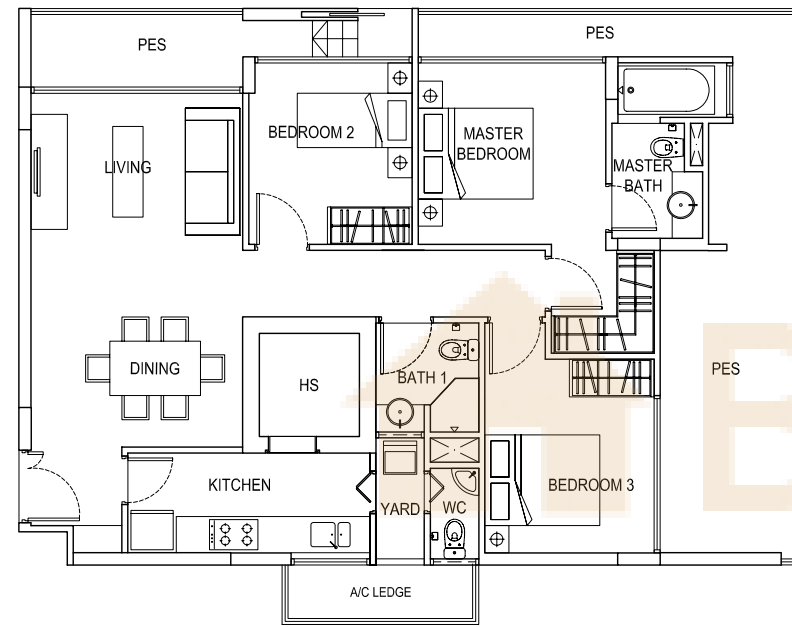
* ALL PES, BALCONIES, PLANTERS & ROOF TERRACE AREAS ARE "NOT TO BE ENCLOSED OR ROOFED OVER".



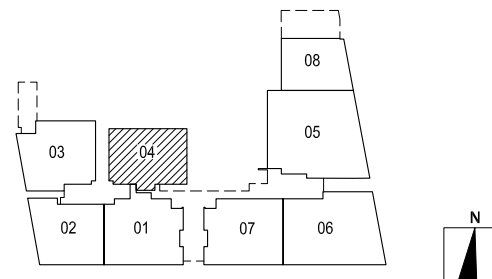
TYPE A1 #03-03, #04-03
(103 sqm / 1109 sqft)



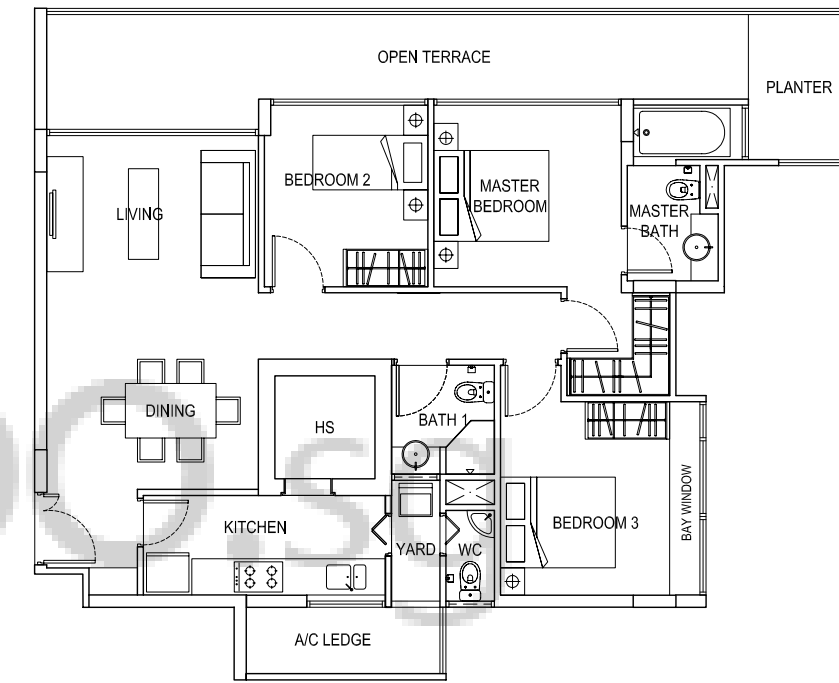
* ALL PES, BALCONIES, PLANTERS & ROOF TERRACE AREAS ARE "NOT TO BE ENCLOSED OR ROOFED OVER".



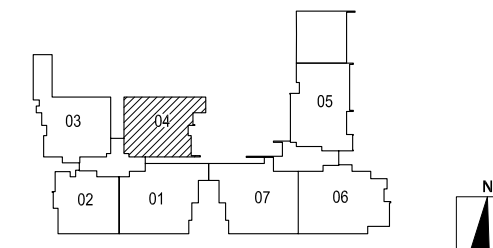
TYPE A2 - G #01-04
(118 sqm / 1270 sqft)



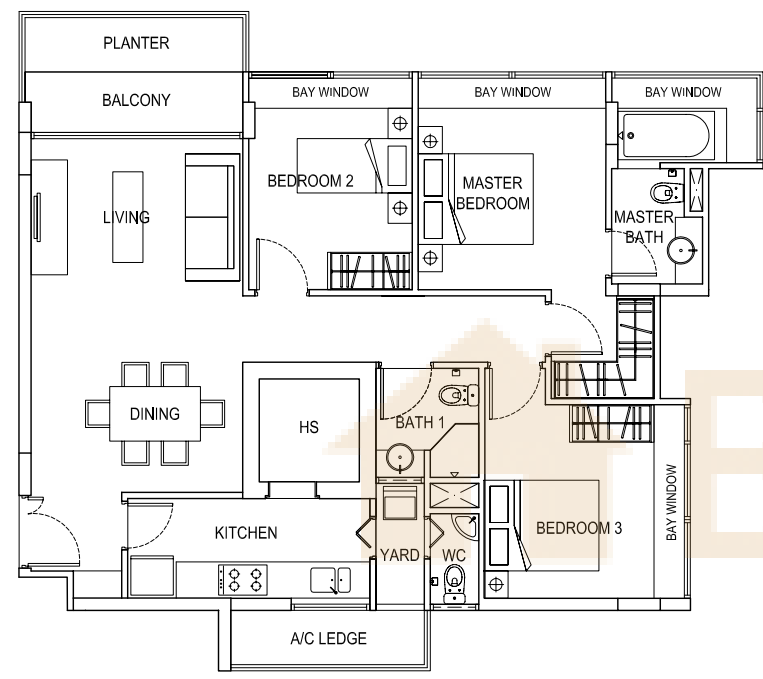
* ALL PES, BALCONIES, PLANTERS & ROOF TERRACE AREAS ARE "NOT TO BE ENCLOSED OR ROOFED OVER".



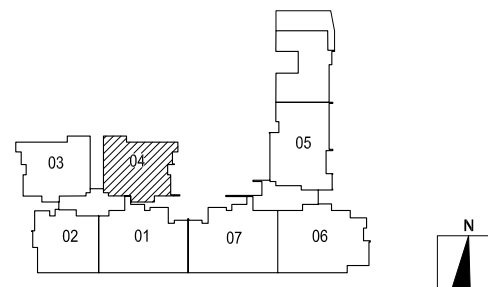
TYPE A2 - 2 #02-04
(116 sqm / 1249 sqft)



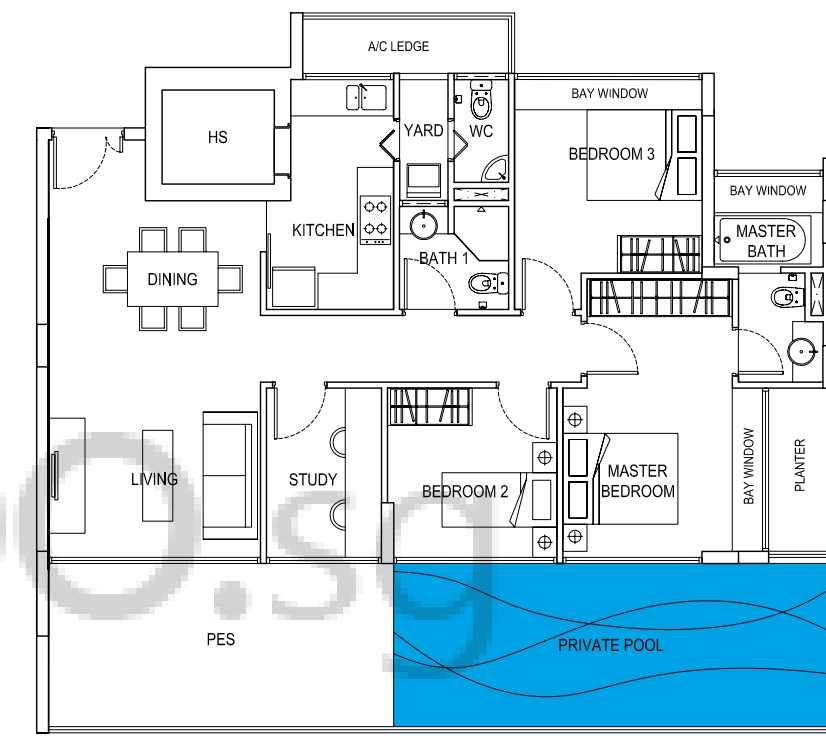
* ALL PES, BALCONIES, PLANTERS & ROOF TERRACE AREAS ARE "NOT TO BE ENCLOSED OR ROOFED OVER".



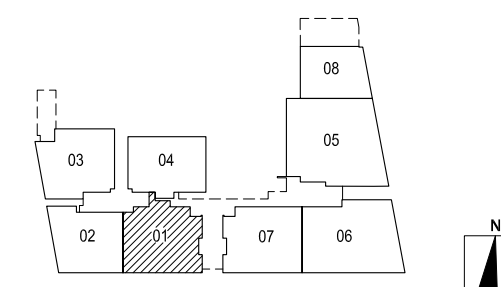
TYPE A2	#03-04, #04-04
(104 sqm / 1119 sqft)	



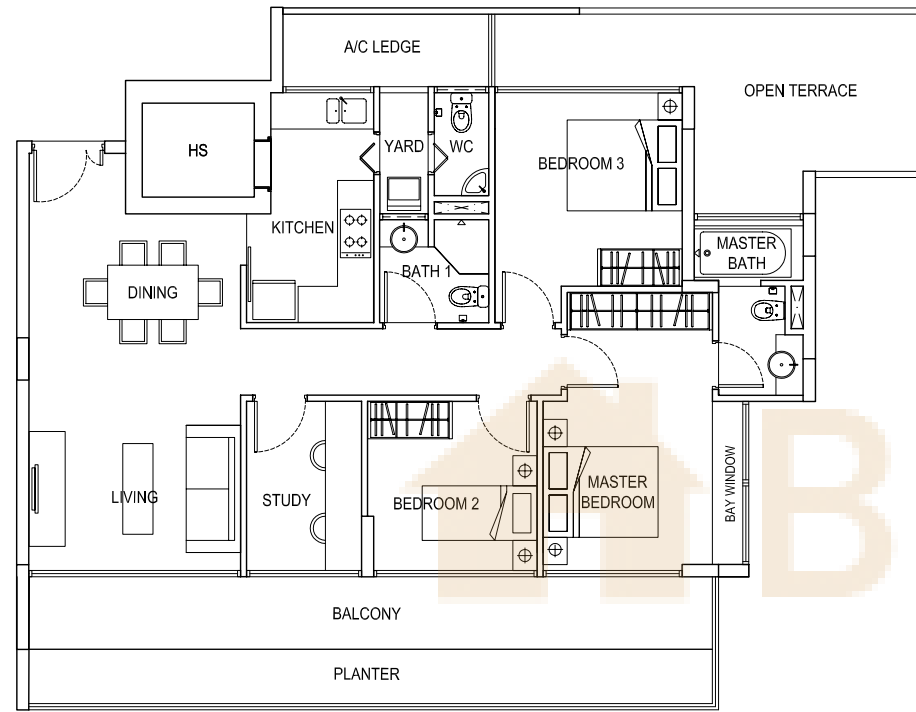
* ALL PES, BALCONIES, PLANTERS & ROOF TERRACE AREAS ARE "NOT TO BE ENCLOSED OR ROOFED OVER".



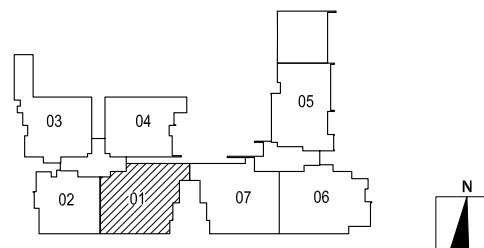
TYPE B1 - G	#01-01
(139 sqm / 1496 sqft)	



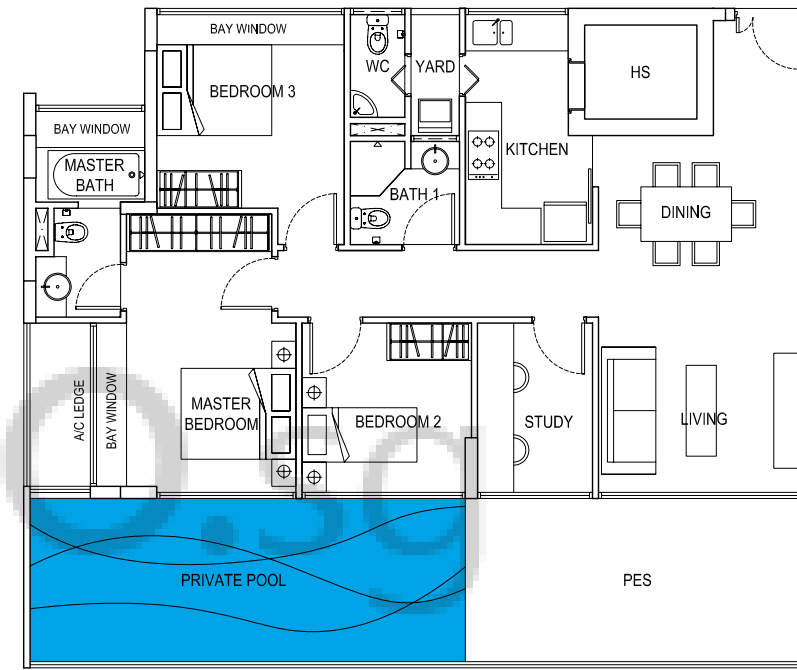
* ALL PES, BALCONIES, PLANTERS & ROOF TERRACE AREAS ARE "NOT TO BE ENCLOSED OR ROOFED OVER".



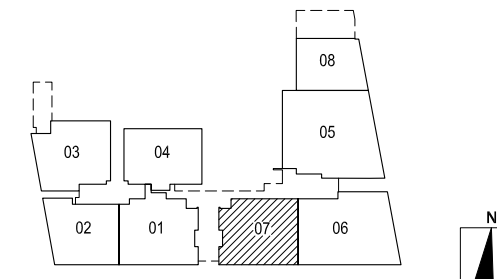
TYPE B1 - 2 #02-01
(140 sqm / 1507 sqft)



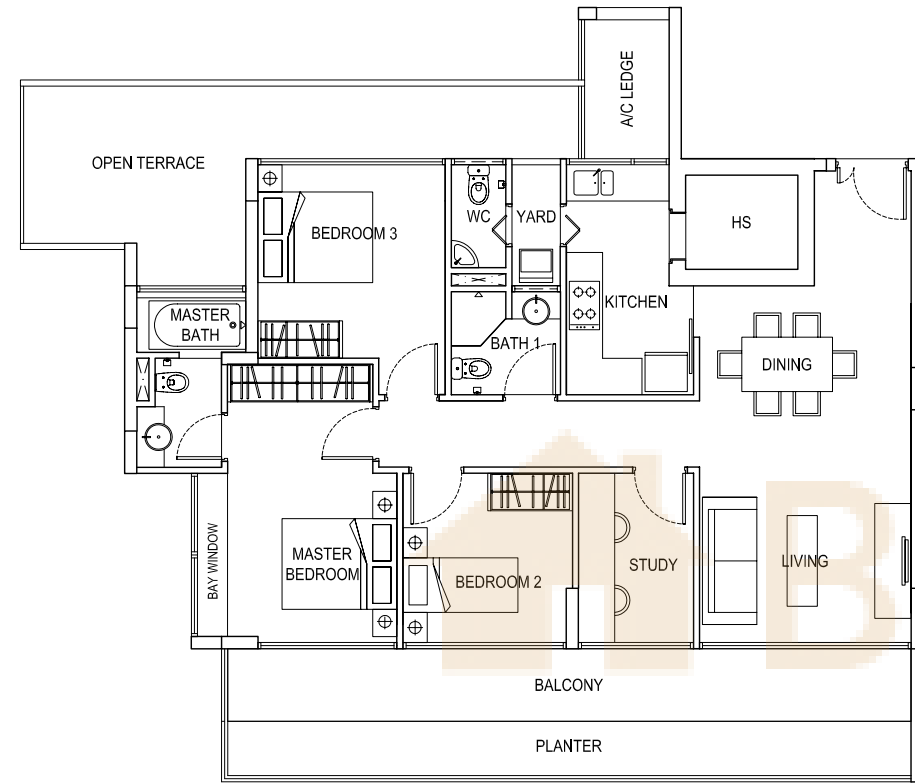
* ALL PES, BALCONIES, PLANTERS & ROOF TERRACE AREAS ARE "NOT TO BE ENCLOSED OR ROOFED OVER".



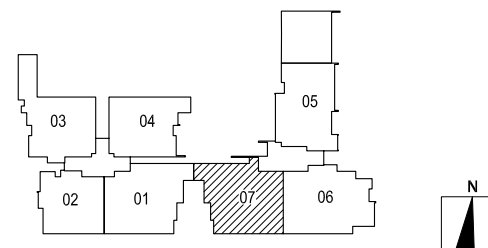
TYPE B2 - G #01-07
(137 sqm / 1475 sqft)



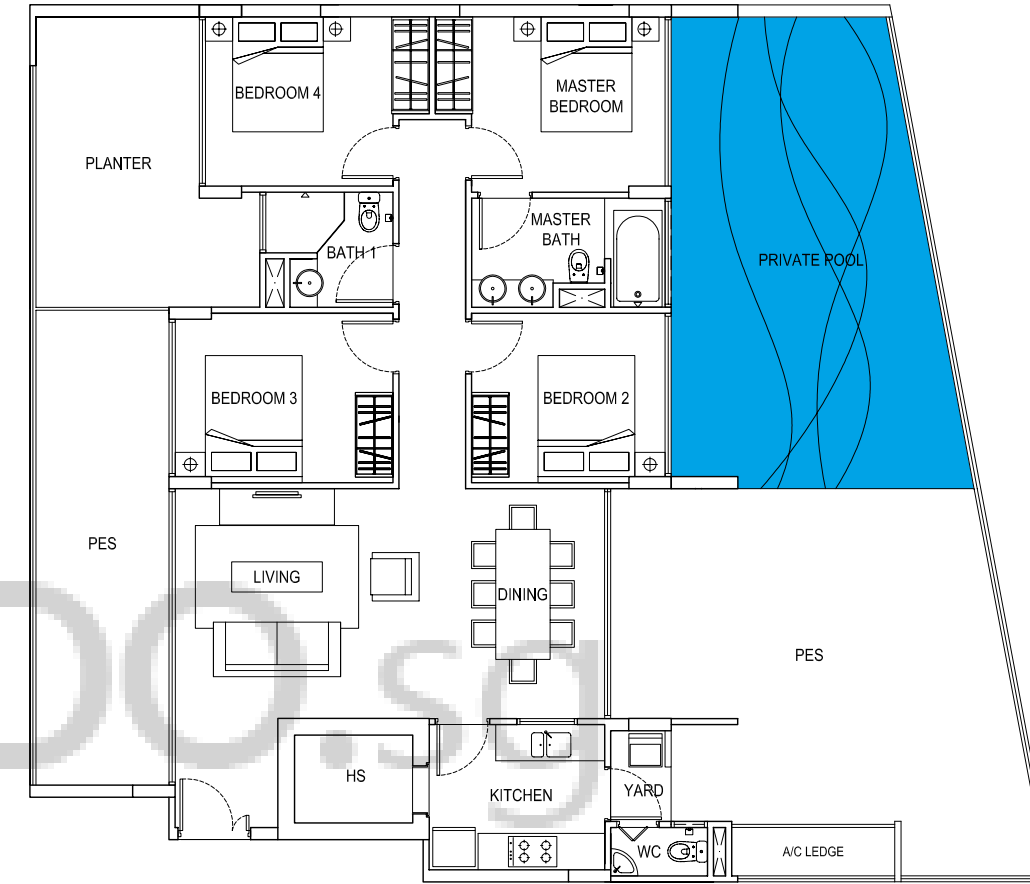
* ALL PES, BALCONIES, PLANTERS & ROOF TERRACE AREAS ARE "NOT TO BE ENCLOSED OR ROOFED OVER".



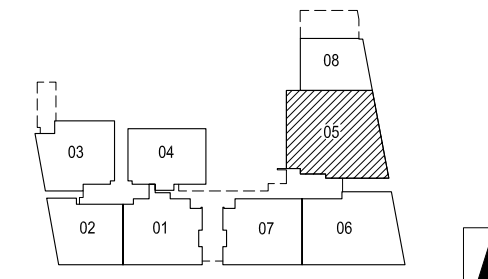
TYPE B2 - 2 #02-07
(144 sqm / 1550 sqft)



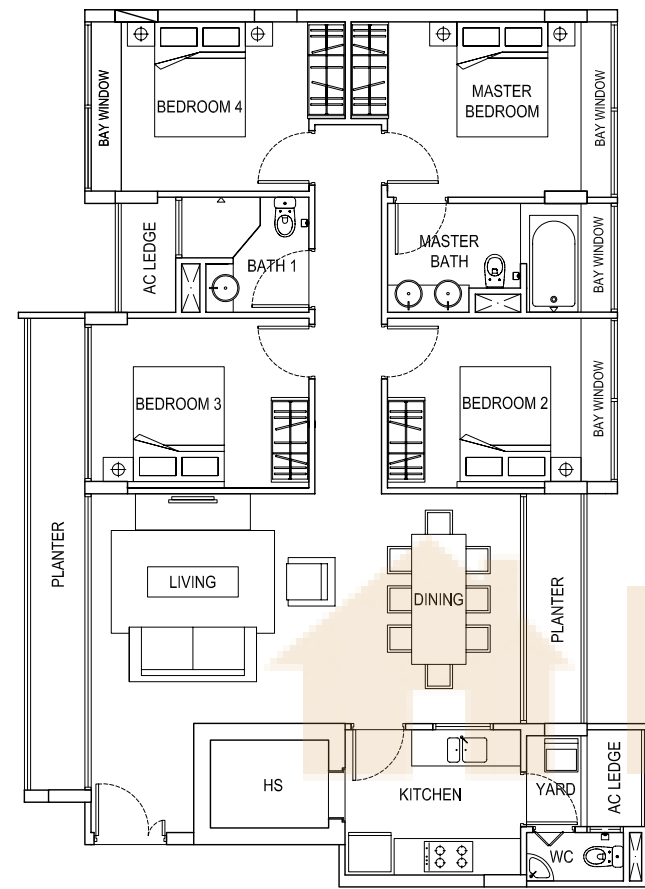
* ALL PES, BALCONIES, PLANTERS & ROOF TERRACE AREAS ARE "NOT TO BE ENCLOSED OR ROOFED OVER".



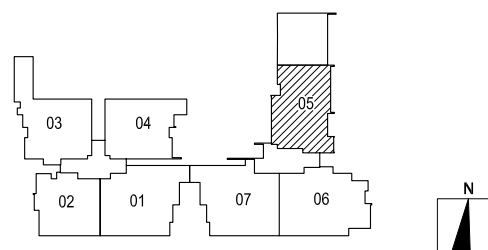
TYPE C2 - G #01-05
(215 sqm / 2314 sqft)



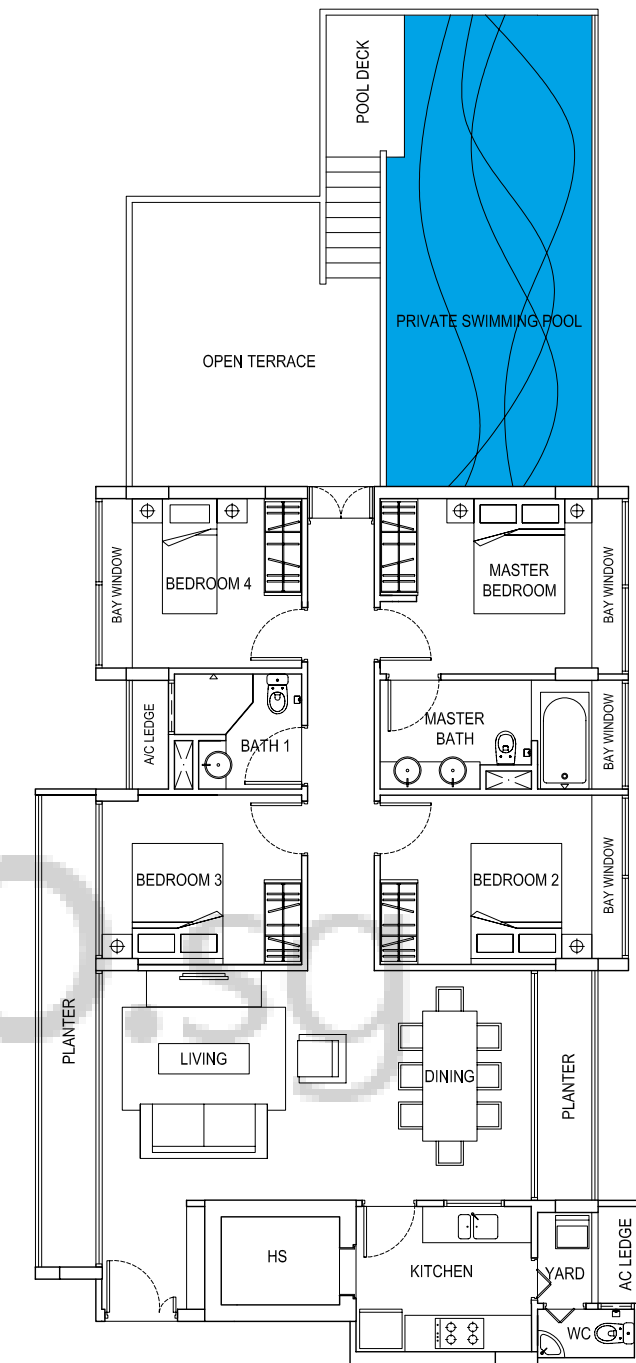
* ALL PES, BALCONIES, PLANTERS & ROOF TERRACE AREAS ARE "NOT TO BE ENCLOSED OR ROOFED OVER".



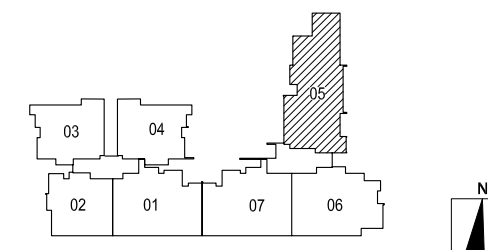
TYPE C2 #02-05, #03-05
(127 sqm / 1367 sqft)



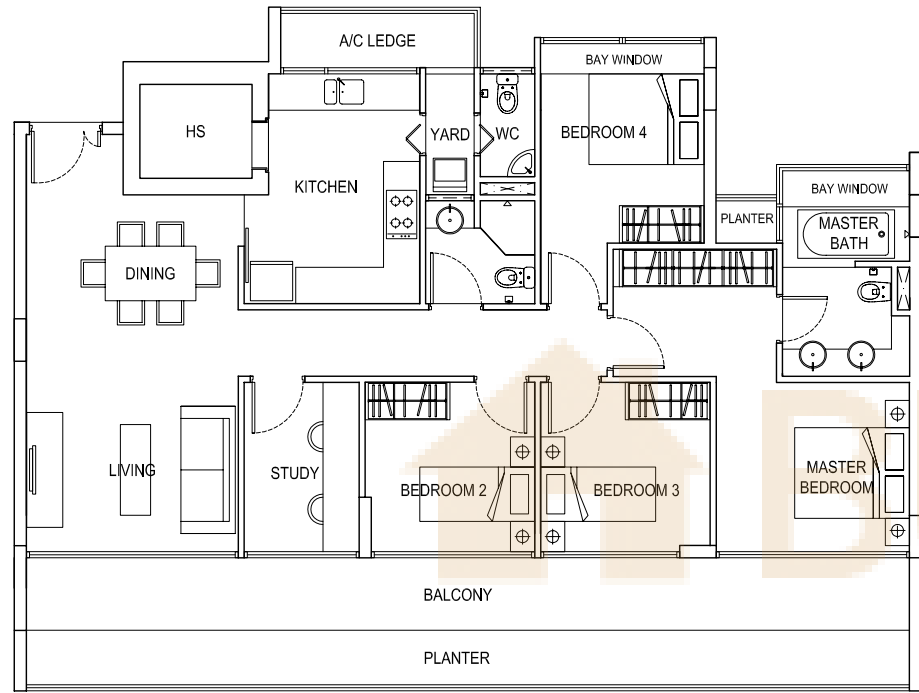
* ALL PES, BALCONIES, PLANTERS & ROOF TERRACE AREAS ARE "NOT TO BE ENCLOSED OR ROOFED OVER".



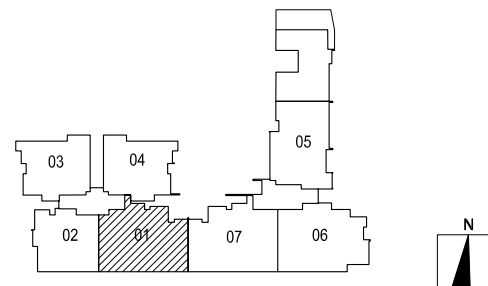
TYPE C2-3 #04-05
(181 sqm / 1948 sqft)



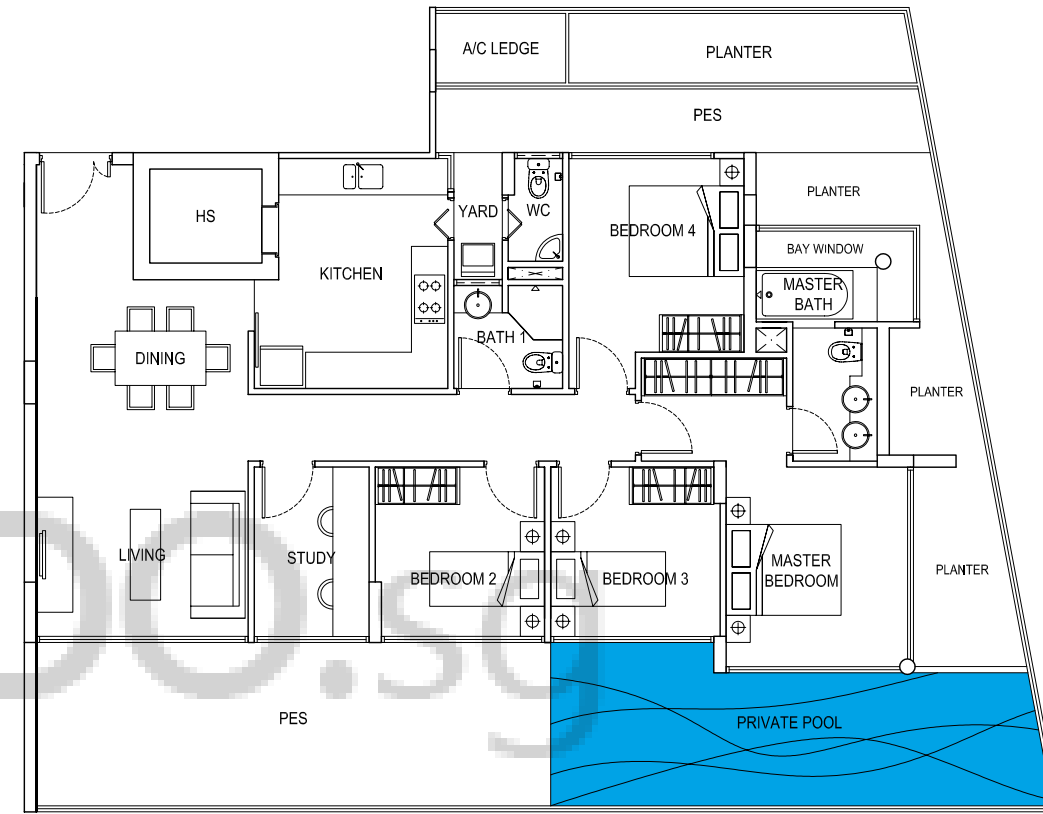
* ALL PES, BALCONIES, PLANTERS & ROOF TERRACE AREAS ARE "NOT TO BE ENCLOSED OR ROOFED OVER".



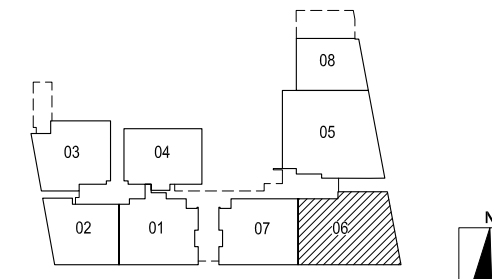
TYPE C3 #03-01, #04-01
(148 sqm / 1593 sqft)



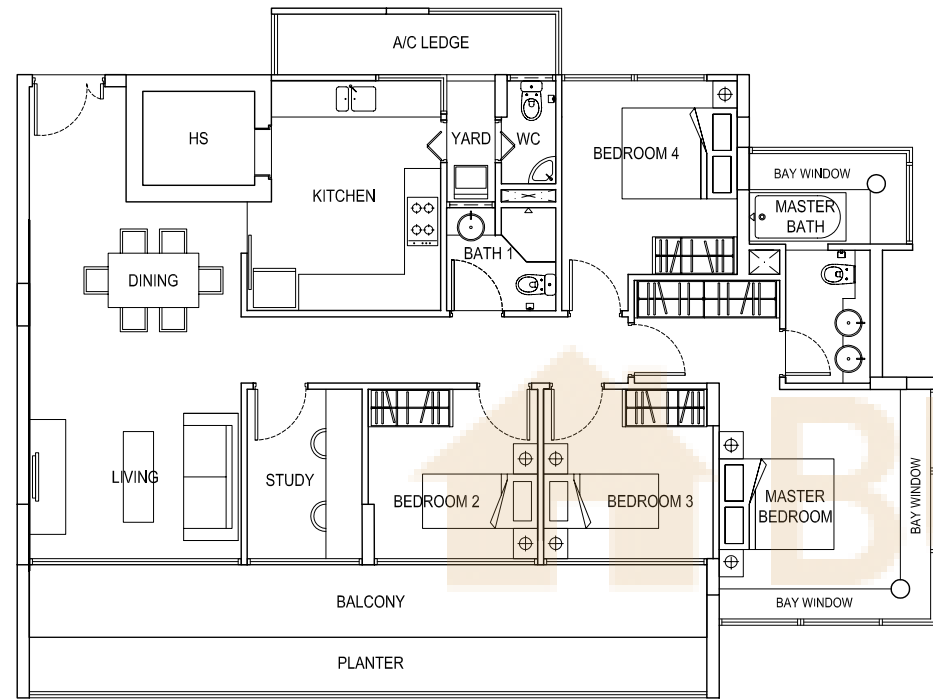
* ALL PES, BALCONIES, PLANTERS & ROOF TERRACE AREAS ARE "NOT TO BE ENCLOSED OR ROOFED OVER".



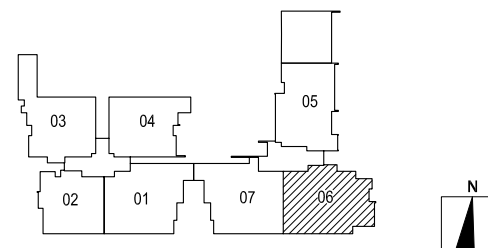
TYPE C1 - G #01-06
(191 sqm / 2056 sqft)



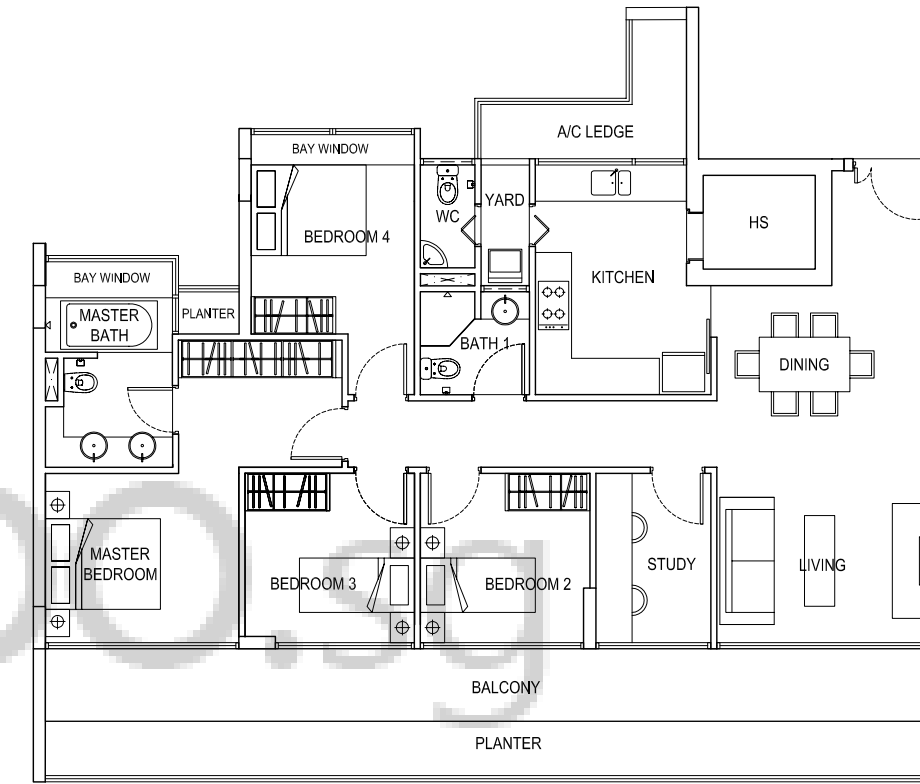
* ALL PES, BALCONIES, PLANTERS & ROOF TERRACE AREAS ARE "NOT TO BE ENCLOSED OR ROOFED OVER".



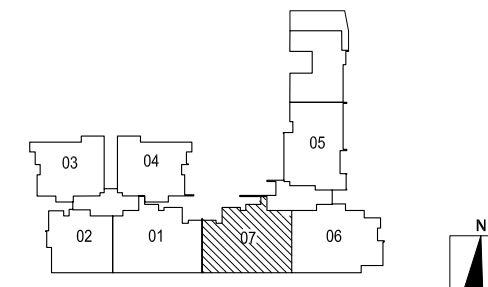
TYPE C1 #02-06, #03-06, #04-06
(147 sqm / 1582 sqft)



* ALL PES, BALCONIES, PLANTERS & ROOF TERRACE AREAS ARE "NOT TO BE ENCLOSED OR ROOFED OVER".

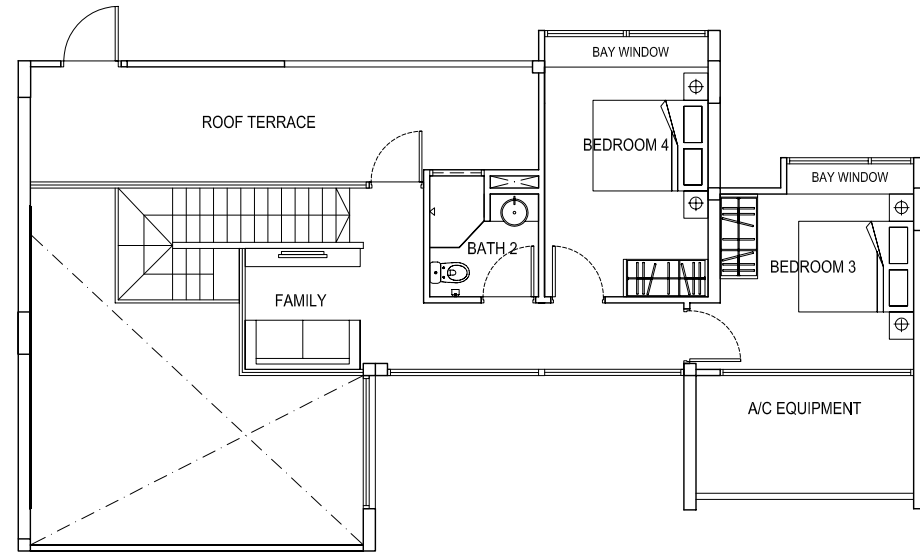


TYPE C4 #03-07, #04-07
(151 sqm / 1625 sqft)

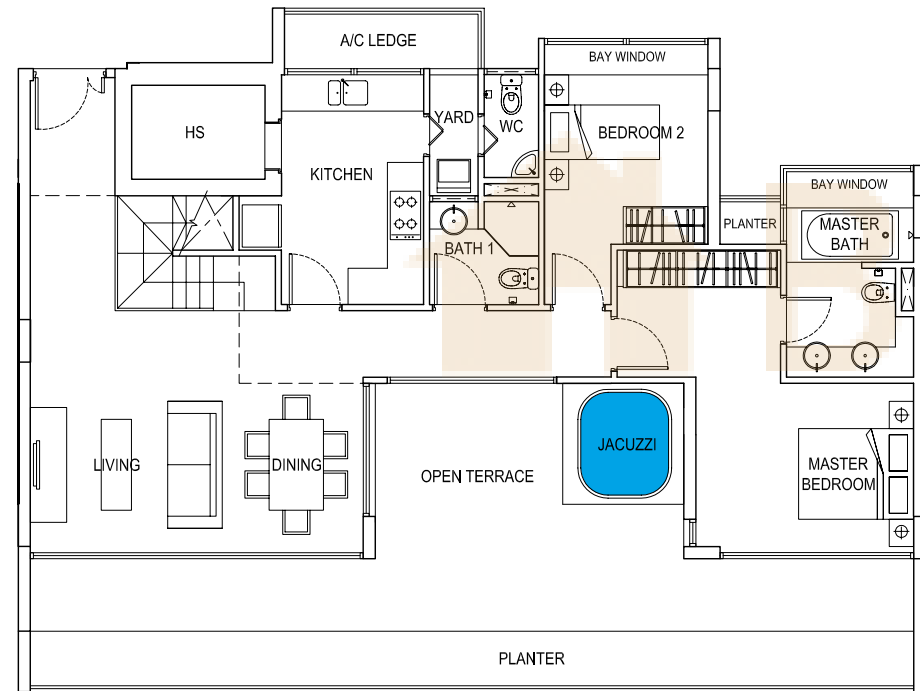


* ALL PES, BALCONIES, PLANTERS & ROOF TERRACE AREAS ARE "NOT TO BE ENCLOSED OR ROOFED OVER".

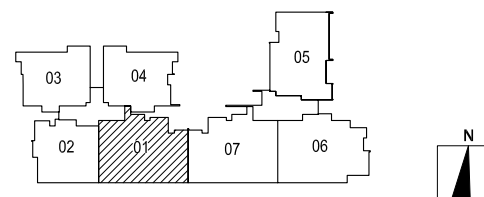
UPPER STOREY



LOWER STOREY

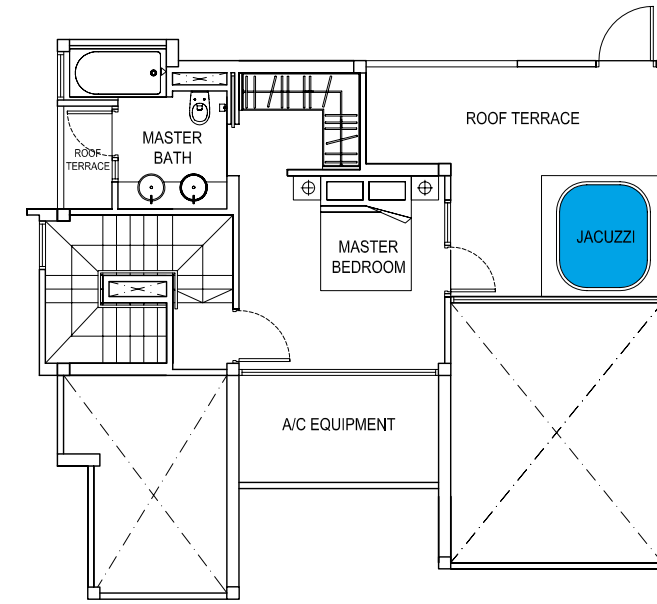


TYPE E4 - P #05-01
(241sqm / 2594 sqft)

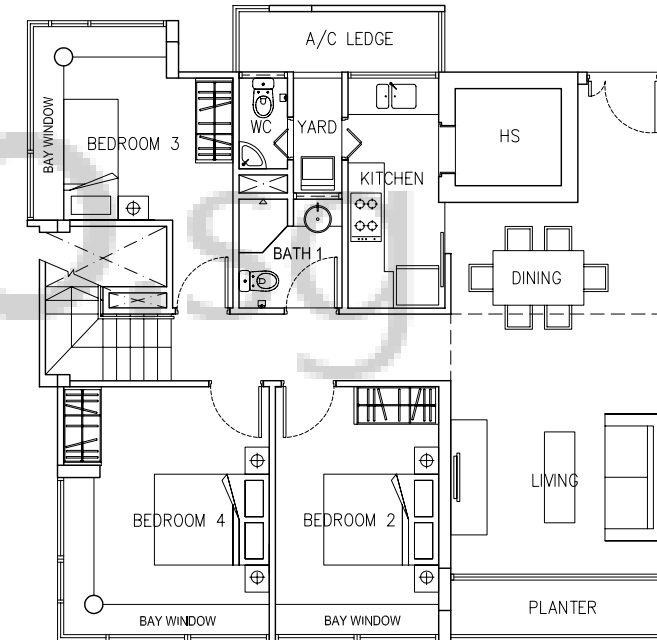


* ALL PES, BALCONIES, PLANTERS & ROOF TERRACE AREAS ARE "NOT TO BE ENCLOSED OR ROOFED OVER".

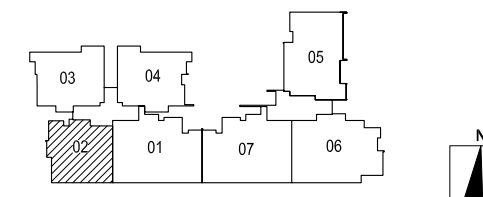
UPPER STOREY



LOWER STOREY

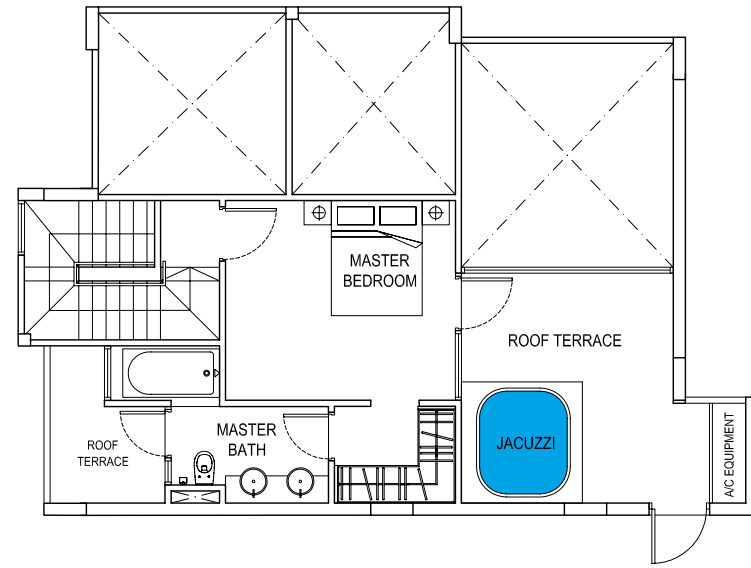


TYPE D3 - P #05-02
(177 sqm / 1905 sqft)

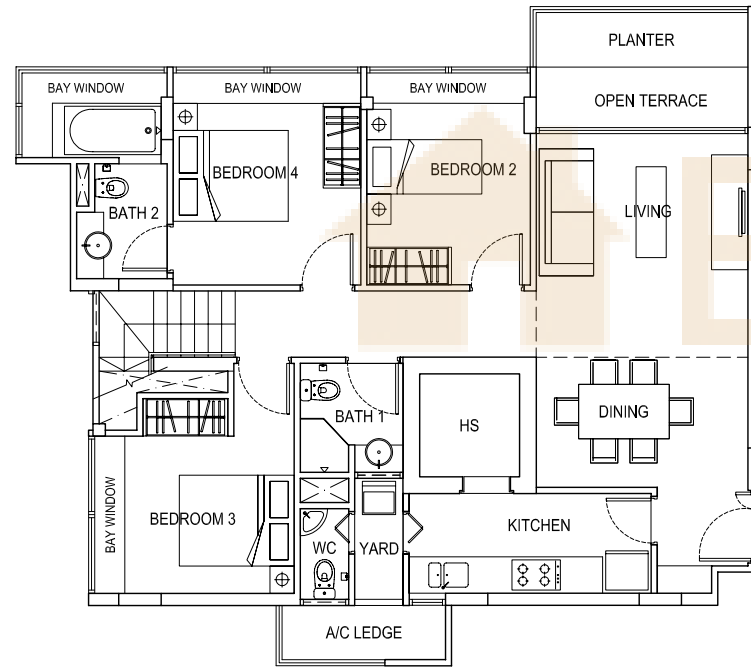


* ALL PES, BALCONIES, PLANTERS & ROOF TERRACE AREAS ARE "NOT TO BE ENCLOSED OR ROOFED OVER".

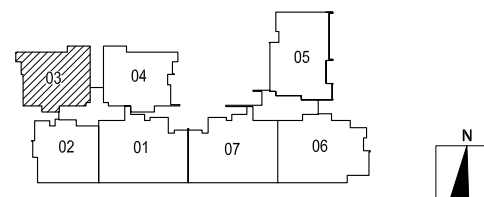
UPPER STOREY



LOWER STOREY

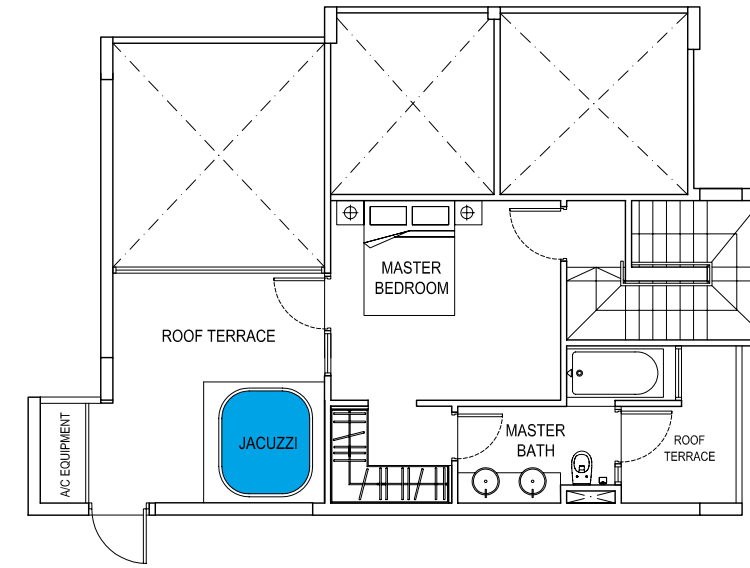


TYPE D1 - P #05-03
(183 sqm / 1970 sqft)

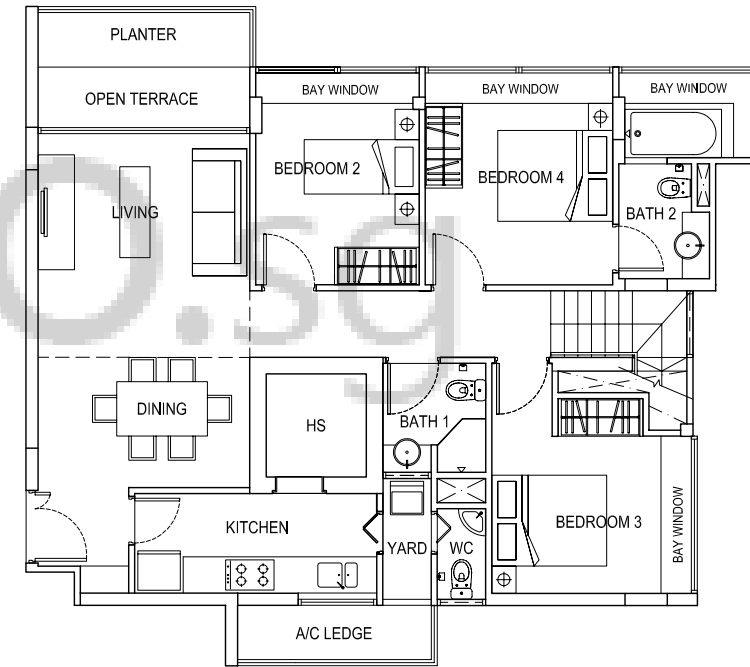


* ALL PES, BALCONIES, PLANTERS & ROOF TERRACE AREAS ARE "NOT TO BE ENCLOSED OR ROOFED OVER".

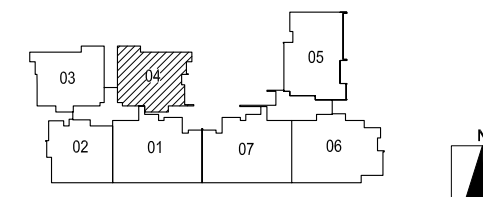
UPPER STOREY



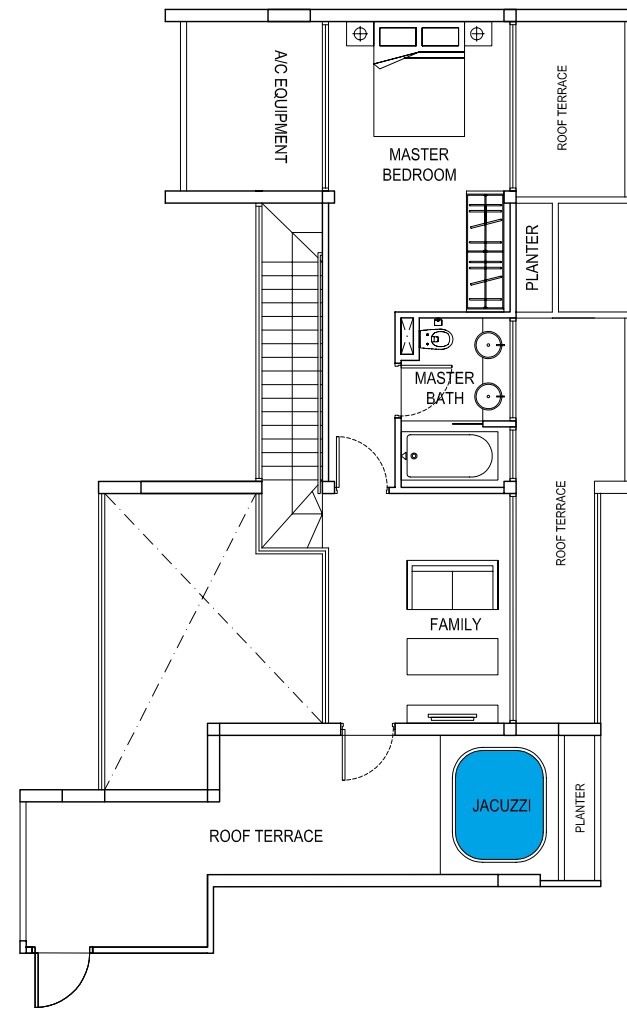
LOWER STOREY



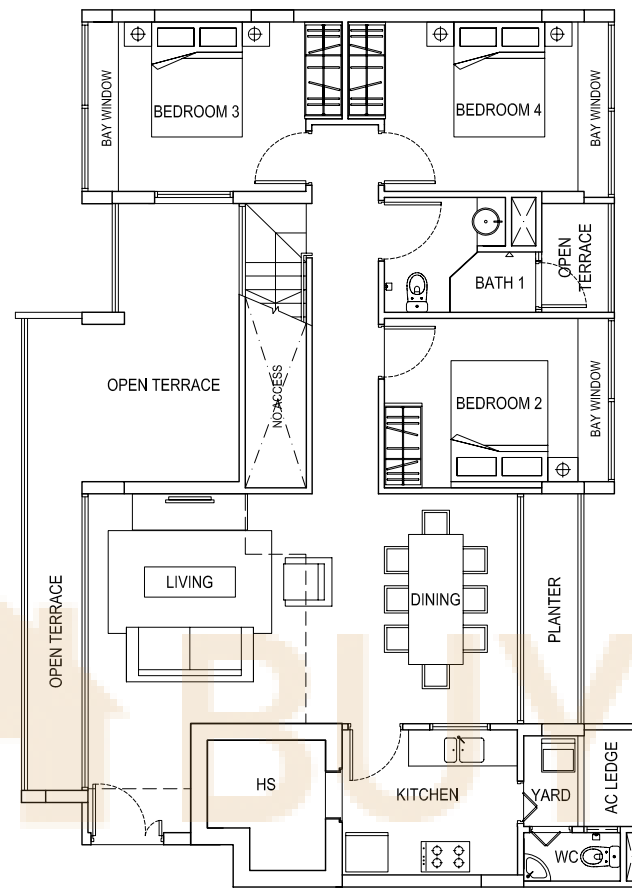
TYPE D2 - P #05-04
(184 sqm / 1981 sqft)



* ALL PES, BALCONIES, PLANTERS & ROOF TERRACE AREAS ARE "NOT TO BE ENCLOSED OR ROOFED OVER".

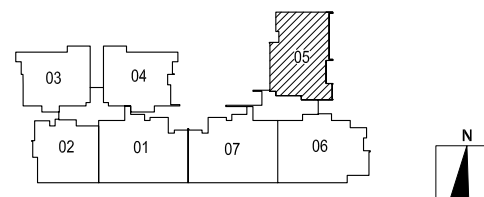


UPPER STOREY

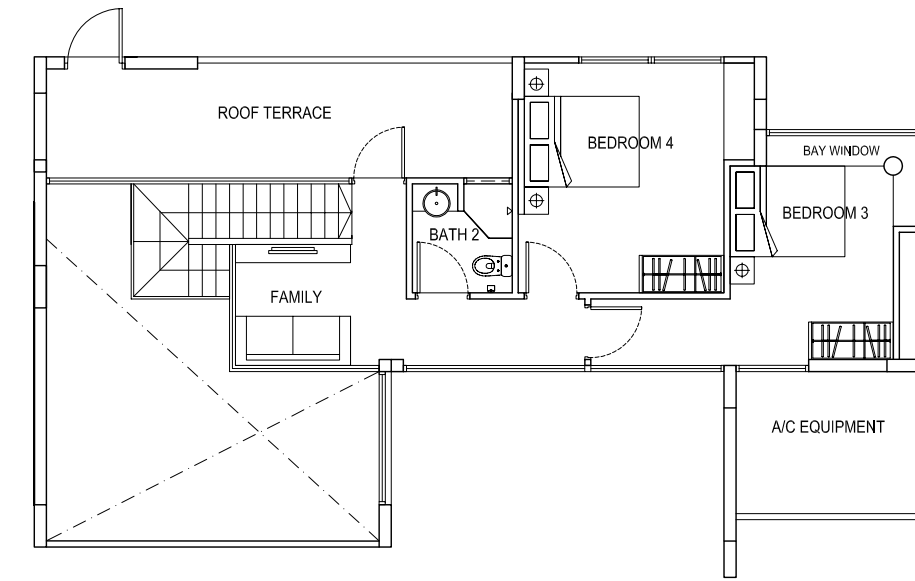


LOWER STOREY

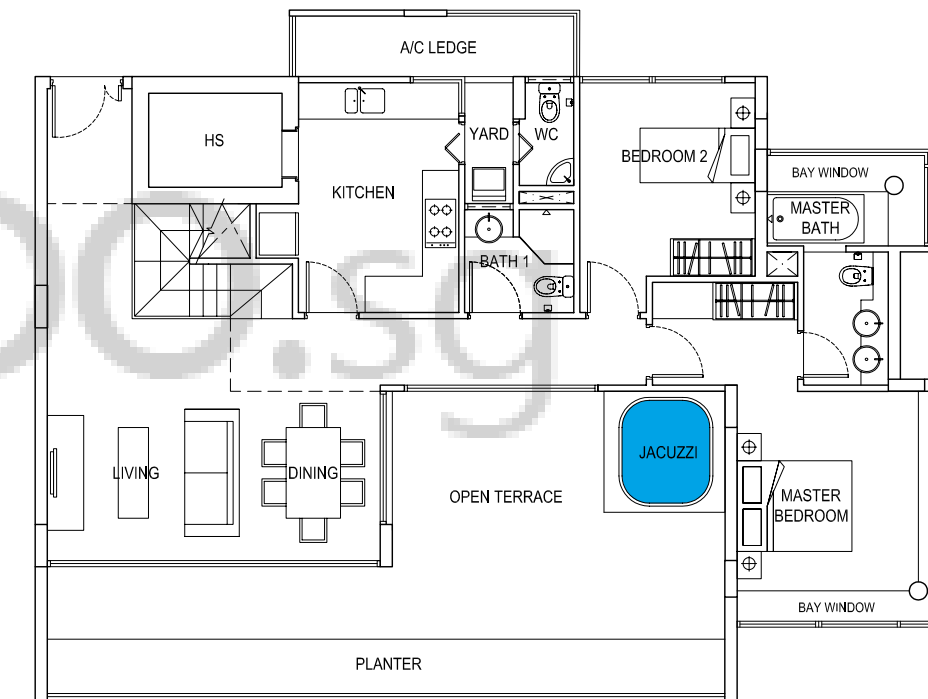
TYPE C2 - P #05-05
(230 sqm / 2476 sqft)



* ALL PES, BALCONIES, PLANTERS & ROOF TERRACE AREAS ARE "NOT TO BE ENCLOSED OR ROOFED OVER".

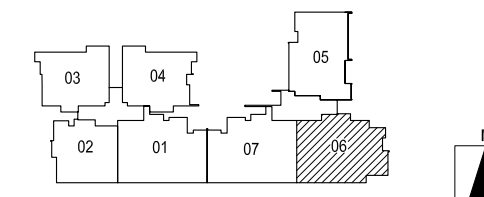


UPPER STOREY



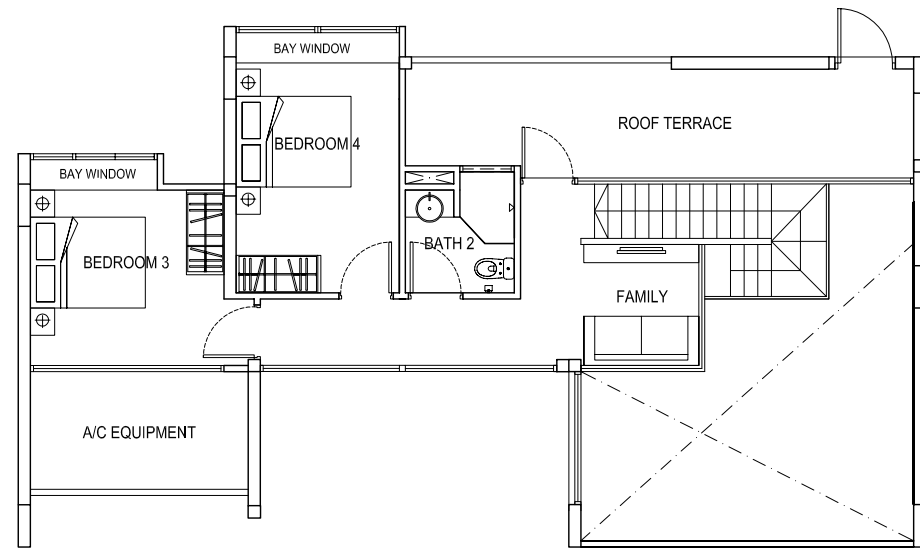
LOWER STOREY

TYPE C1 - P #05-06
(238 sqm / 2562 sqft)

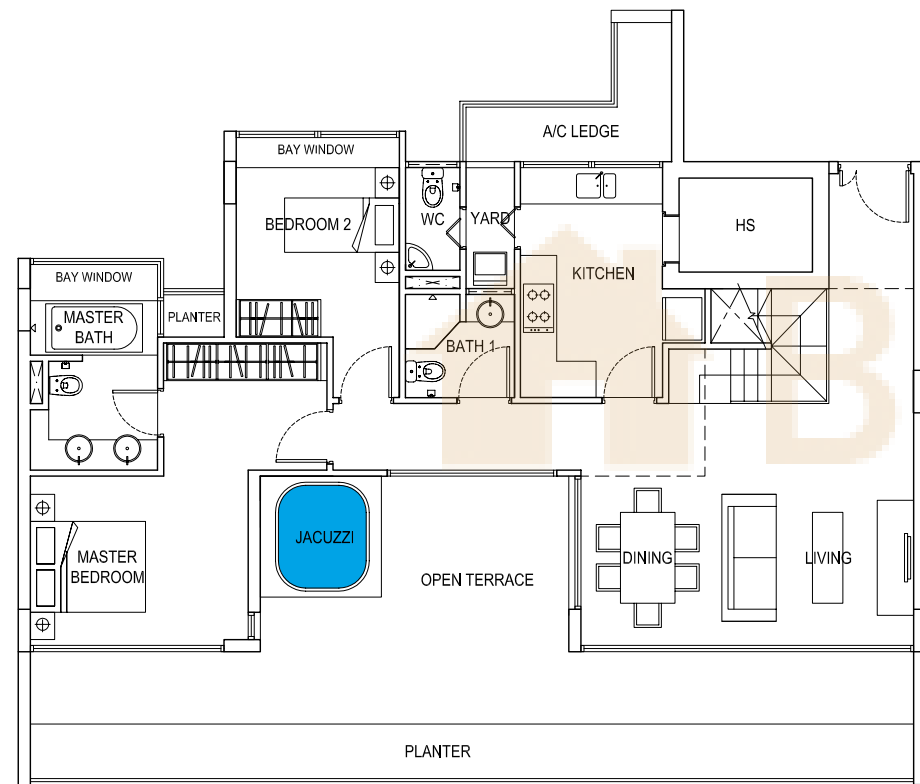


* ALL PES, BALCONIES, PLANTERS & ROOF TERRACE AREAS ARE "NOT TO BE ENCLOSED OR ROOFED OVER".

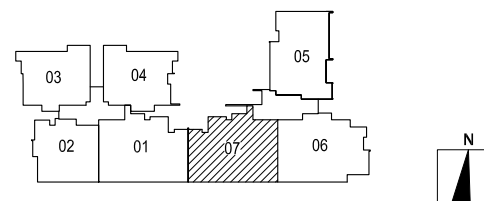
UPPER STOREY



LOWER STOREY

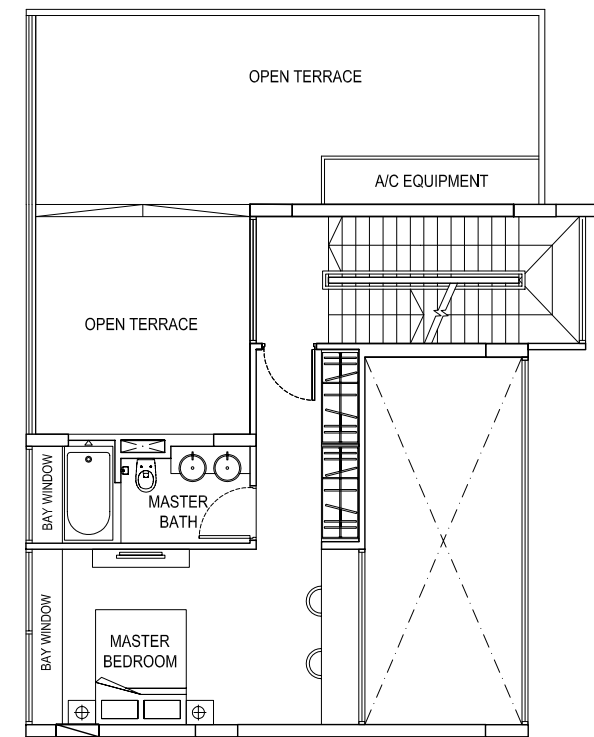


TYPE E5 - P #05-07
(241sqm / 2594 sqft)

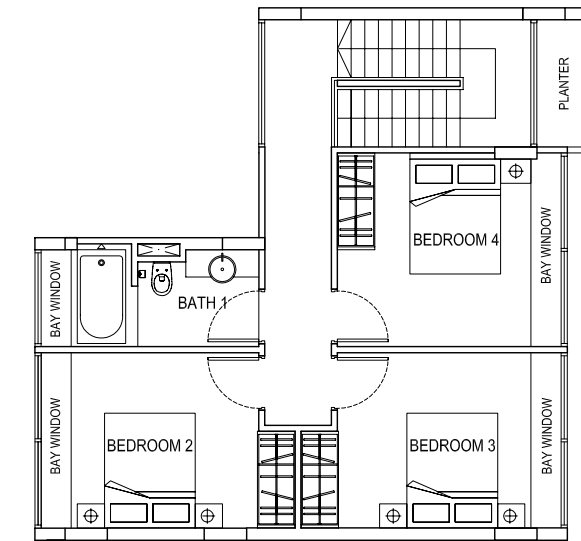


* ALL PES, BALCONIES, PLANTERS & ROOF TERRACE AREAS ARE "NOT TO BE ENCLOSED OR ROOFED OVER".

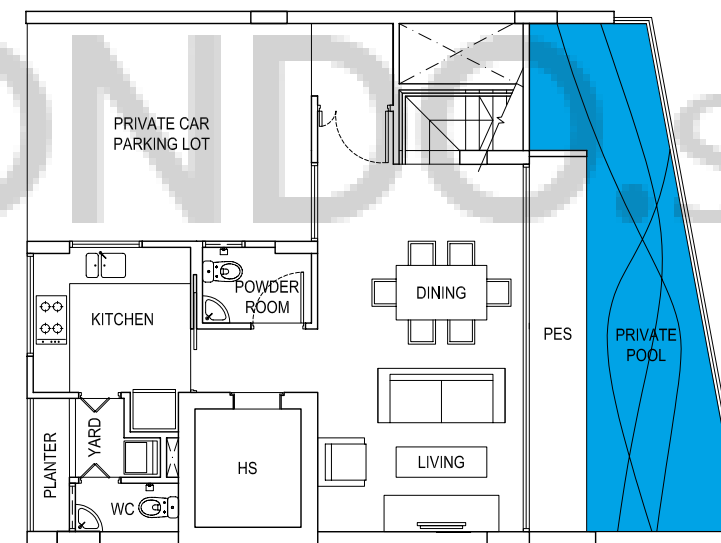
2ND STOREY



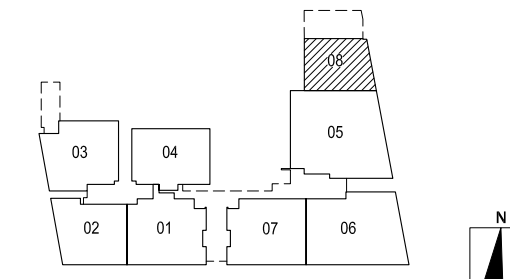
3RD STOREY



1ST STOREY



TOWNHOUSE #01-08
(256 sqm / 2756 sqft)



* ALL PES, BALCONIES, PLANTERS & ROOF TERRACE AREAS ARE "NOT TO BE ENCLOSED OR ROOFED OVER".