



Artist's Impression

VISTA HOMES

ONE UNIQUE HOME
MYRIAD WAYS TO
ENJOY THE VIEW



With living and dining areas aligned with the bedrooms for maximum natural light and ventilation, Vista Homes – which occupy over 80% of the apartments at Twin Waterfalls – provide residents with a truly efficient yet spacious and private layout. Most Vista Homes also face the swimming pool and recreation facilities, giving you the pleasure of waking up every morning to shimmering pool views and lush landscaping.



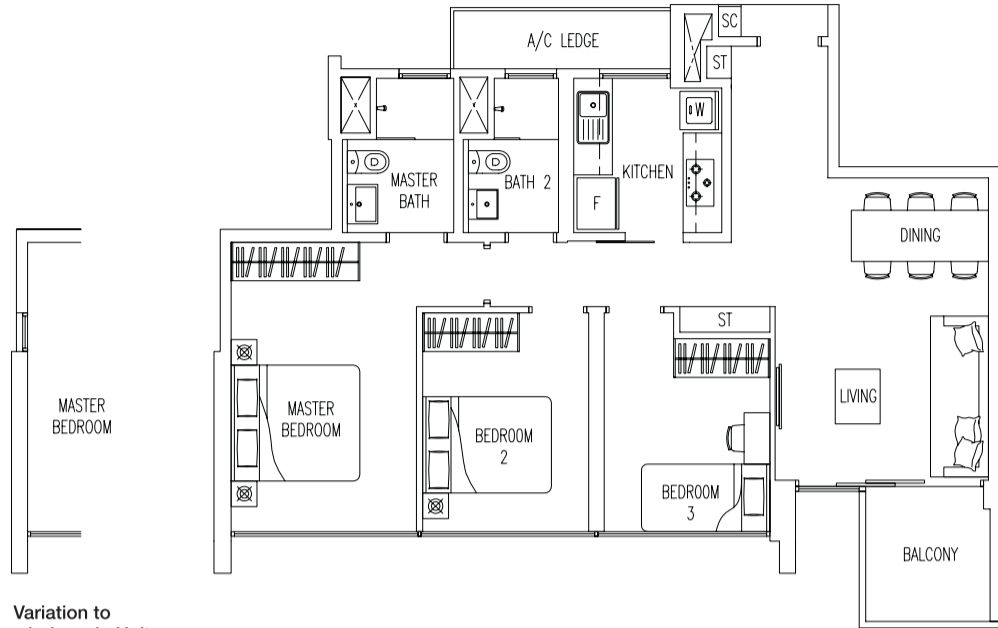
Type B2

3 BEDROOM (Compact)

Type A1

85 sq m / 915 sq ft

- # 03-03 to # 16-03
- # 02-06 to # 16-06
- # 03-09 to # 16-09
- # 02-12 to # 16-12
- # 07-13 to # 16-13
- # 07-14 to # 16-14
- # 07-16 to # 16-16
- # 03-21 to # 16-21
- # 02-25 to # 16-25

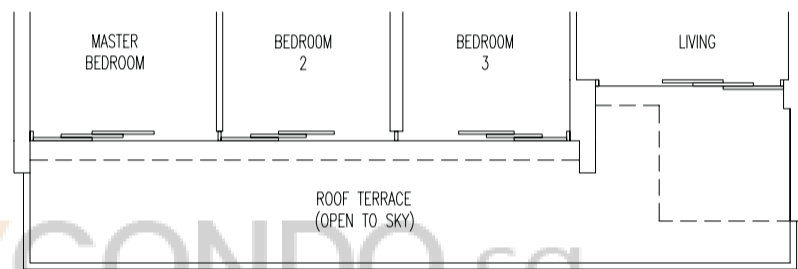


Variation to windows in Units
02-12 to # 16-12

Type A1-R

108 sq m / 1163 sq ft

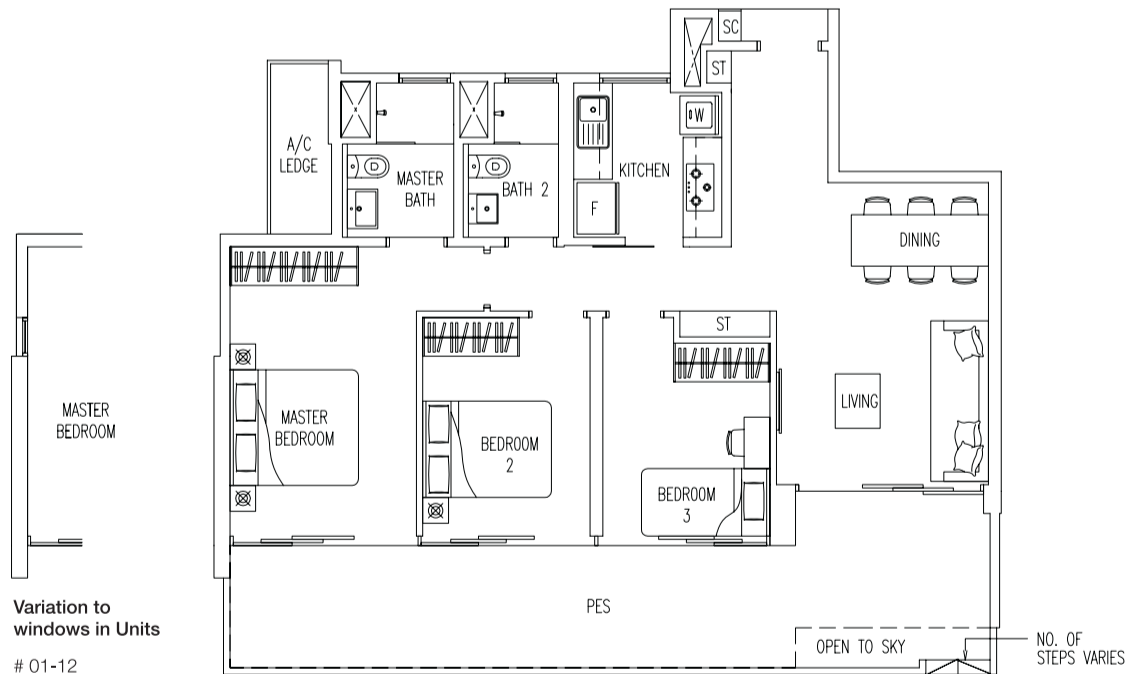
- # 02-03



Type A1-P

107 sq m / 1152 sq ft

- # 01-06
- # 01-12
- # 06-13
- # 06-14
- # 06-16
- # 01-25

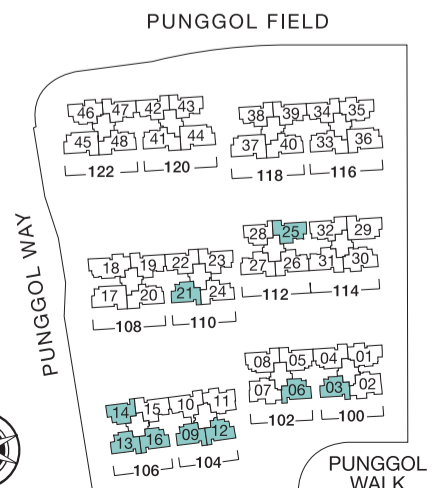


Variation to windows in Units
01-12



Area includes A/C ledge, balcony, PES, roof terrace and void area. Some units are mirror images of the apartment plans shown in the brochure. Please refer to the key plans for orientation. The plans are subject to change as may be approved by the relevant authorities. All floor areas are approximate measurements only and are subject to government resurvey.

Abbreviation : A/C ledge (Aircon Ledge), PES (Private Enclosed Space), SC (Shoe Cabinet) and ST (Store)



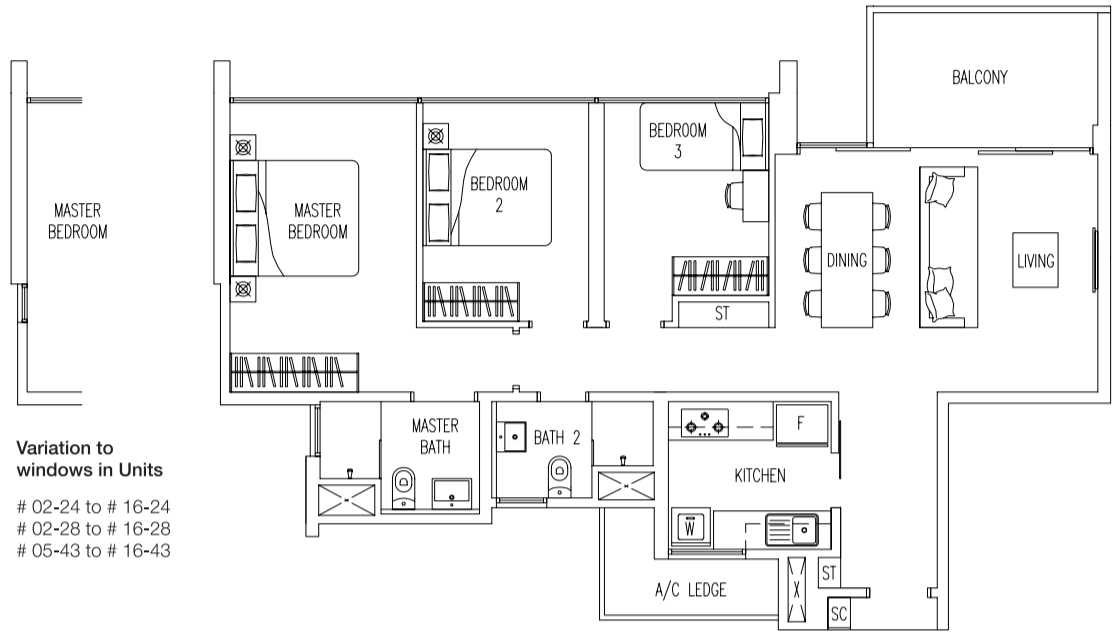
Key plan is not to scale

3 BEDROOM (Compact)

Type A2 **VH**

93 sq m / 1001 sq ft

- # 02-24 to # 16-24
- # 02-28 to # 16-28
- # 05-34 to # 16-34
- # 05-38 to # 16-38
- # 05-39 to # 16-39
- # 05-42 to # 16-42
- # 05-43 to # 16-43
- # 06-47 to # 16-47



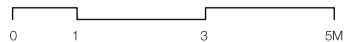
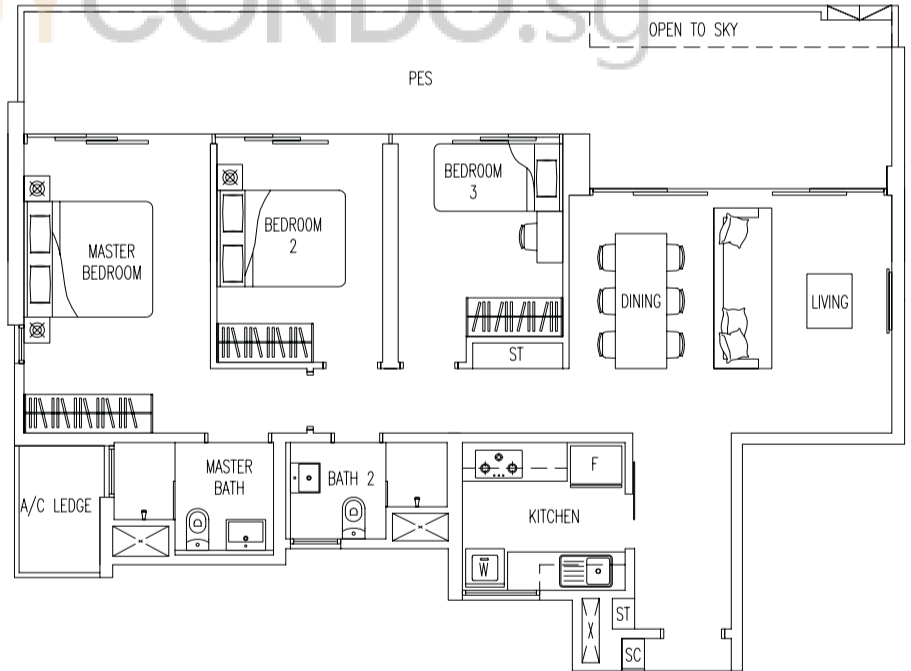
Variation to windows in Units

- # 02-24 to # 16-24
- # 02-28 to # 16-28
- # 05-43 to # 16-43

Type A2-P **VH**

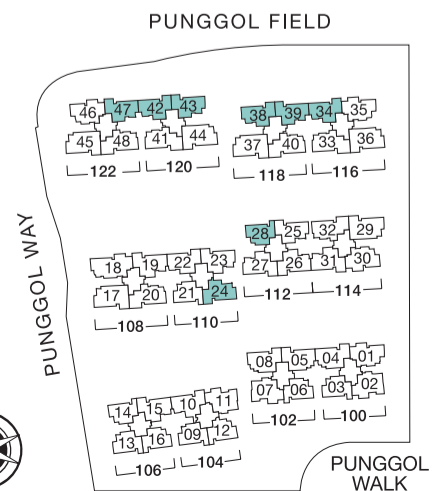
117 sq m / 1259 sq ft

- # 01-24
- # 01-28



Area includes A/C ledge, balcony, PES, roof terrace and void area. Some units are mirror images of the apartment plans shown in the brochure. Please refer to the key plans for orientation. The plans are subject to change as may be approved by the relevant authorities. All floor areas are approximate measurements only and are subject to government resurvey.

Abbreviation : A/C ledge (Aircon Ledge), PES (Private Enclosed Space), SC (Shoe Cabinet) and ST (Store)



Key plan is not to scale

3 BEDROOM (Compact)

Type A2-P1

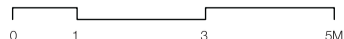
VH

153 sq m / 1647 sq ft

05-47



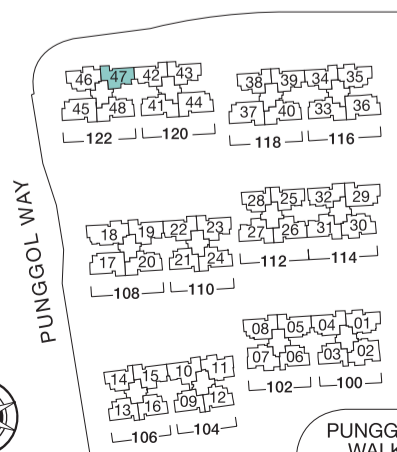
BUYCONDO.sg



Area includes A/C ledge, balcony, PES, roof terrace and void area. Some units are mirror images of the apartment plans shown in the brochure. Please refer to the key plans for orientation. The plans are subject to change as may be approved by the relevant authorities. All floor areas are approximate measurements only and are subject to government resurvey.

Abbreviation : A/C ledge (Aircon Ledge), PES (Private Enclosed Space), SC (Shoe Cabinet) and ST (Store)

PUNGGOL FIELD



Key plan is not to scale

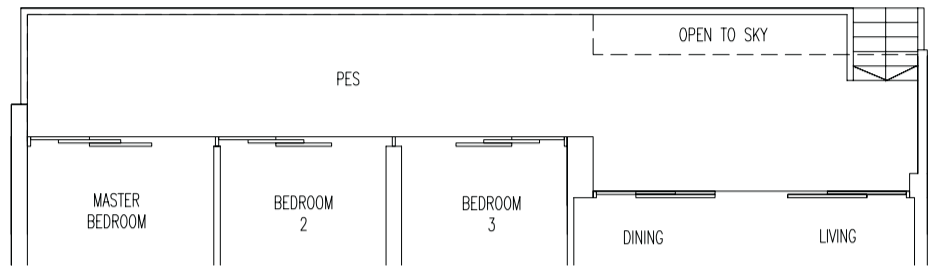
3 BEDROOM

Type B1-P

VH

128 sq m / 1378 sq ft

- # 01-04
- # 01-05
- # 01-08

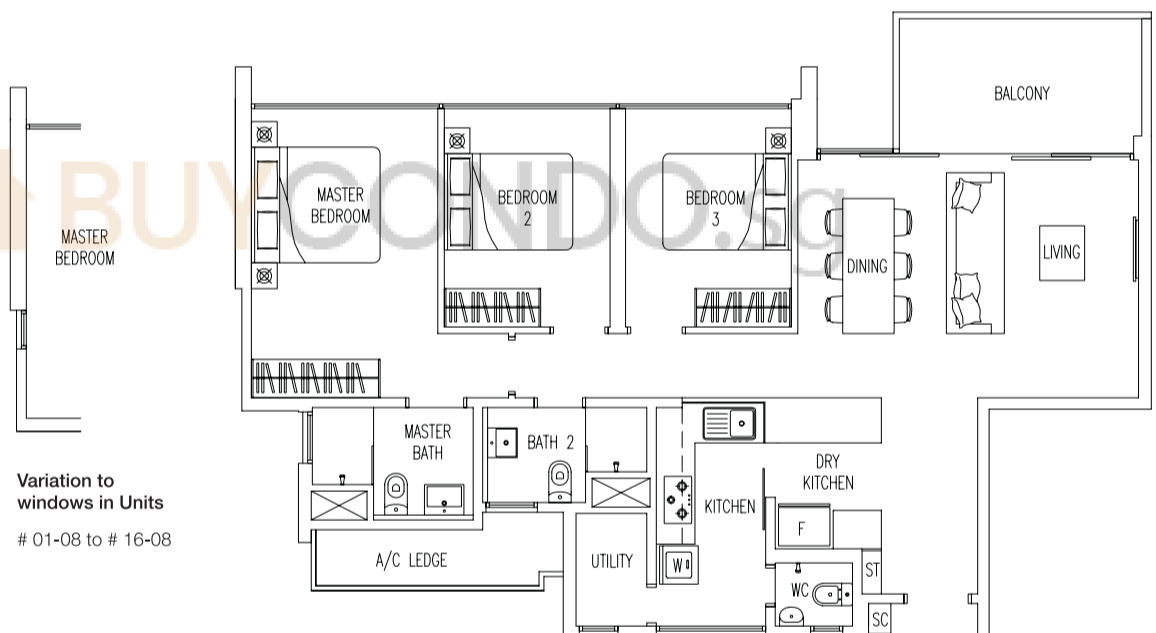


Type B1

VH

103 sq m / 1109 sq ft

- # 02-04 to # 16-04
- # 02-05 to # 16-05
- # 02-08 to # 16-08



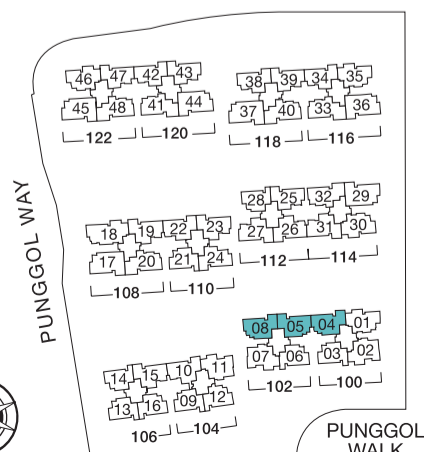
Variation to windows in Units
01-08 to # 16-08



Area includes A/C ledge, balcony, PES, roof terrace and void area. Some units are mirror images of the apartment plans shown in the brochure. Please refer to the key plans for orientation. The plans are subject to change as may be approved by the relevant authorities. All floor areas are approximate measurements only and are subject to government resurvey.

Abbreviation : A/C ledge (Aircon Ledge), PES (Private Enclosed Space), SC (Shoe Cabinet) and ST (Store)

PUNGGOL FIELD



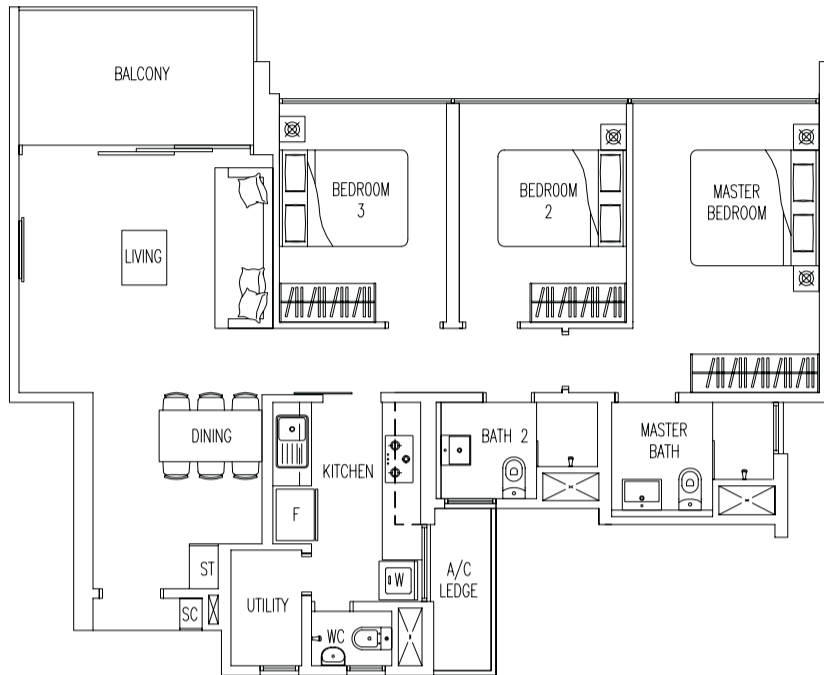
Key plan is not to scale

3 BEDROOM

Type B2-A

96 sq m / 1033 sq ft

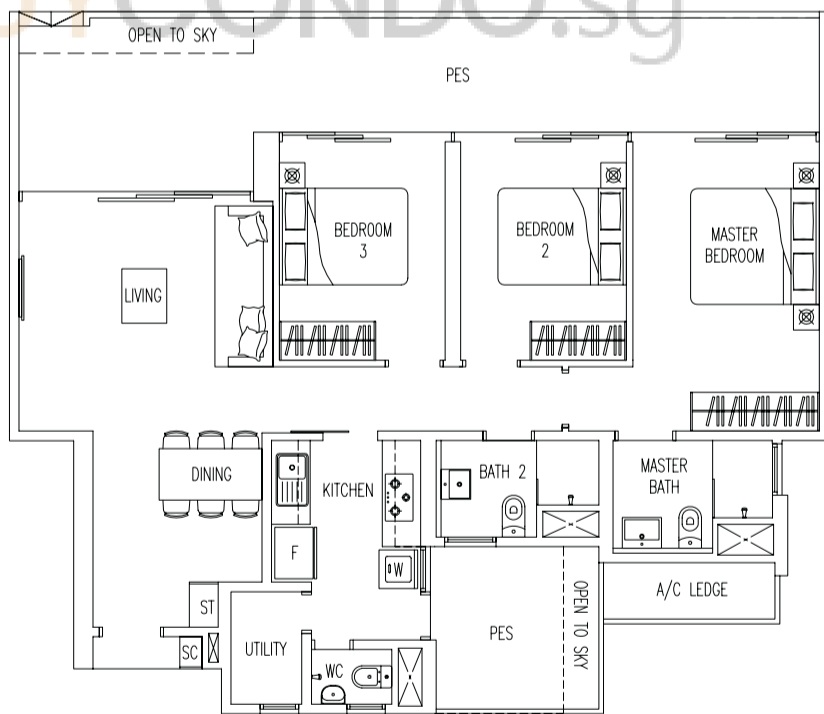
05-19



Type B2-P1

124 sq m / 1335 sq ft

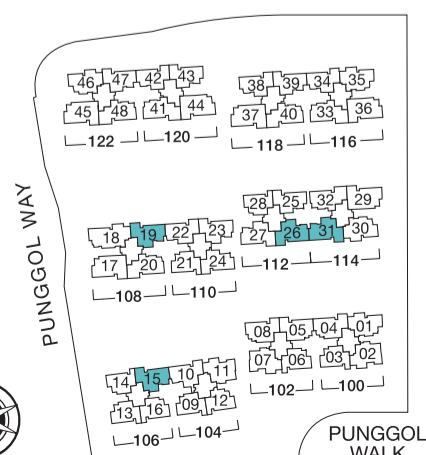
06-15
01-26
01-31



Area includes A/C ledge, balcony, PES, roof terrace and void area. Some units are mirror images of the apartment plans shown in the brochure. Please refer to the key plans for orientation. The plans are subject to change as may be approved by the relevant authorities. All floor areas are approximate measurements only and are subject to government resurvey.

Abbreviation : A/C ledge (Aircon Ledge), PES (Private Enclosed Space), SC (Shoe Cabinet) and ST (Store)

PUNGGOL FIELD



Key plan is not to scale

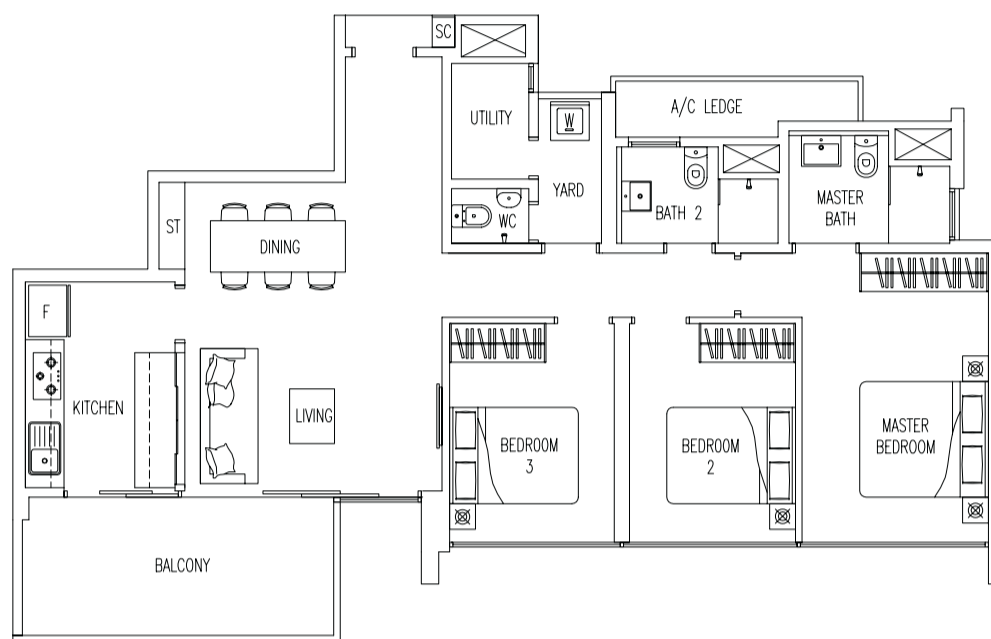
PUNGGOL WALK

3 BEDROOM

Type B3 **VH**

104 sq m / 1119 sq ft

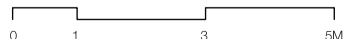
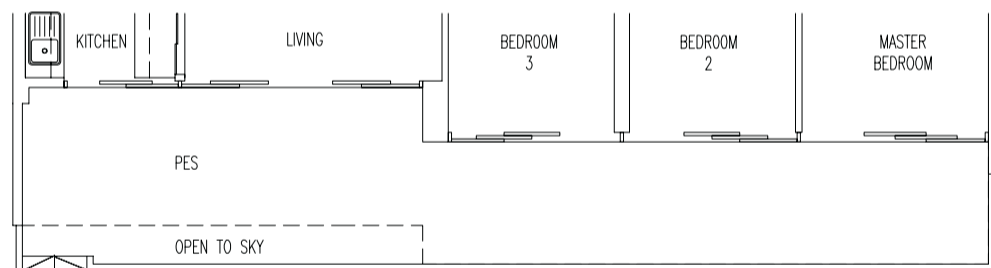
- # 06-20 to # 16-20
- # 02-32 to # 16-32
- # 02-33 to # 16-33
- # 02-40 to # 16-40
- # 03-41 to # 16-41
- # 06-48 to # 16-48



Type B3-P **VH**

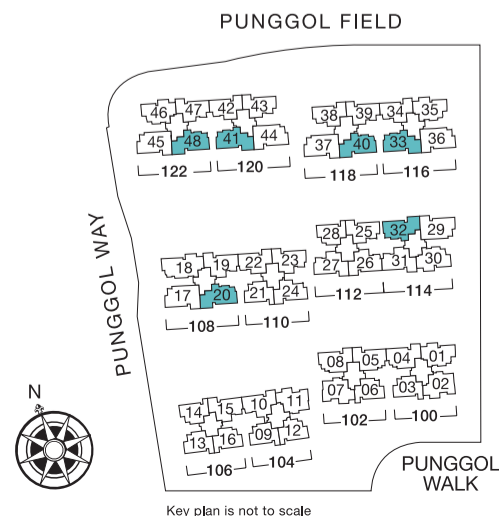
130 sq m / 1399 sq ft

- # 01-32
- # 01-33
- # 01-40



Area includes A/C ledge, balcony, PES, roof terrace and void area. Some units are mirror images of the apartment plans shown in the brochure. Please refer to the key plans for orientation. The plans are subject to change as may be approved by the relevant authorities. All floor areas are approximate measurements only and are subject to government resurvey.

Abbreviation : A/C ledge (Aircon Ledge), PES (Private Enclosed Space), SC (Shoe Cabinet) and ST (Store)



Key plan is not to scale

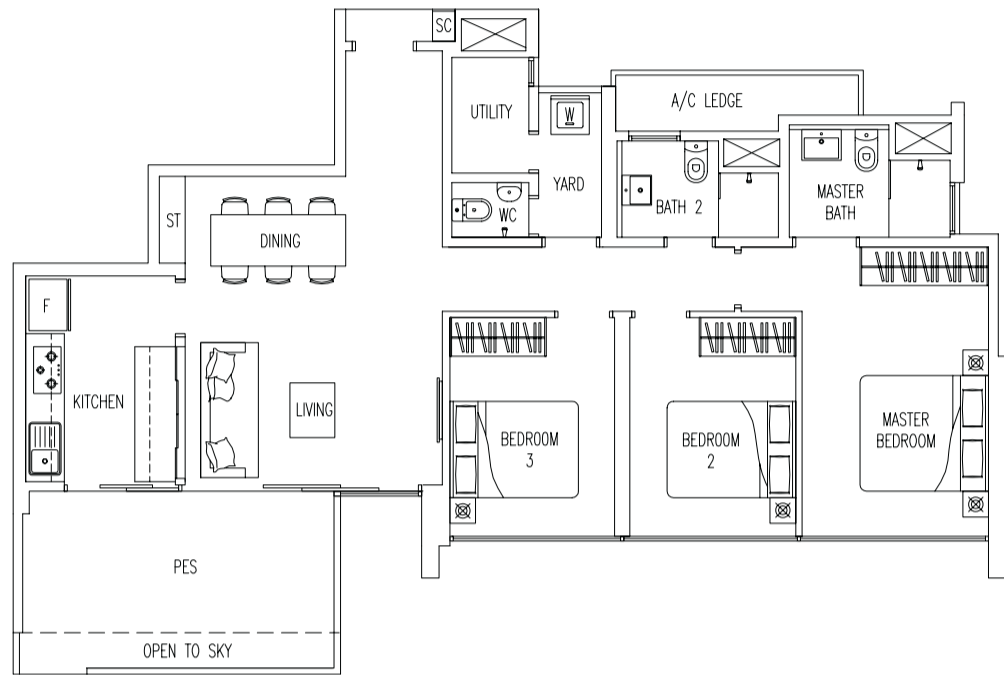
3 BEDROOM

Type B3-P1

VH

107 sq m / 1152 sq ft

05-20

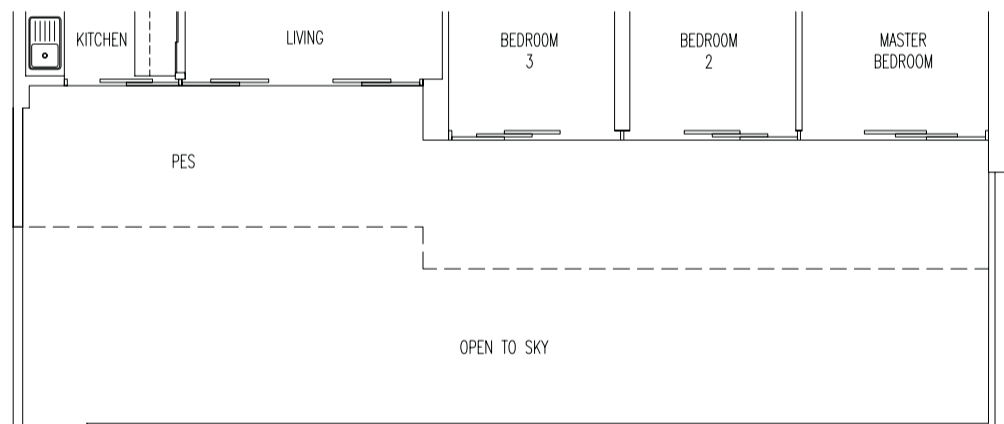


Type B3-P2

VH

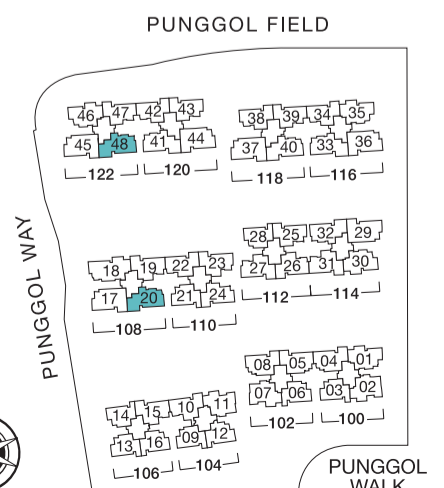
167 sq m / 1798 sq ft

05-48



Area includes A/C ledge, balcony, PES, roof terrace and void area. Some units are mirror images of the apartment plans shown in the brochure. Please refer to the key plans for orientation. The plans are subject to change as may be approved by the relevant authorities. All floor areas are approximate measurements only and are subject to government resurvey.

Abbreviation : A/C ledge (Aircon Ledge), PES (Private Enclosed Space), SC (Shoe Cabinet) and ST (Store)



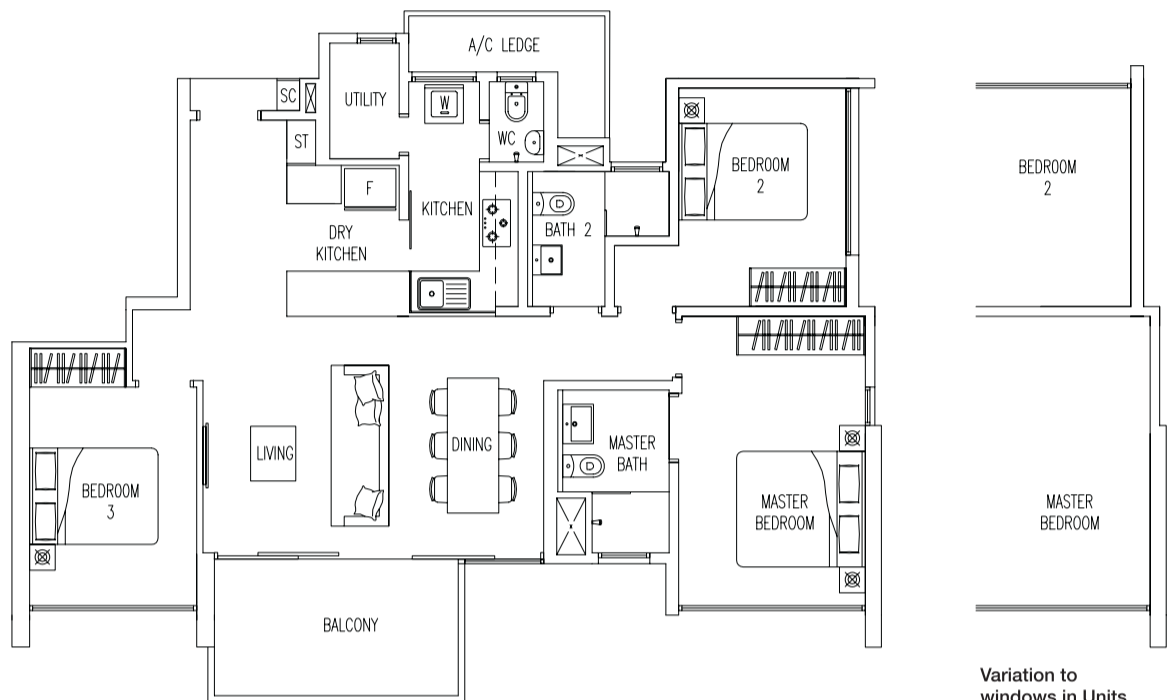
Key plan is not to scale

3 BEDROOM

Type B4 **VH**

103 sq m / 1109 sq ft

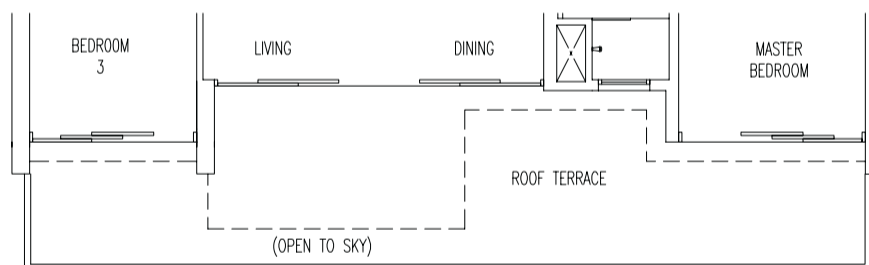
- # 03-02 to # 16-02
- # 02-07 to # 16-07
- # 02-11 to # 16-11



Type B4-R **VH**

126 sq m / 1356 sq ft

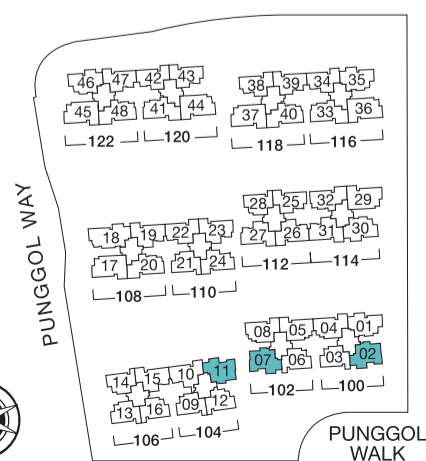
- # 02-02



Area includes A/C ledge, balcony, PES, roof terrace and void area. Some units are mirror images of the apartment plans shown in the brochure. Please refer to the key plans for orientation. The plans are subject to change as may be approved by the relevant authorities. All floor areas are approximate measurements only and are subject to government resurvey.

Abbreviation : A/C ledge (Aircon Ledge), PES (Private Enclosed Space), SC (Shoe Cabinet) and ST (Store)

PUNGGOL FIELD



Key plan is not to scale

PUNGGOL WALK

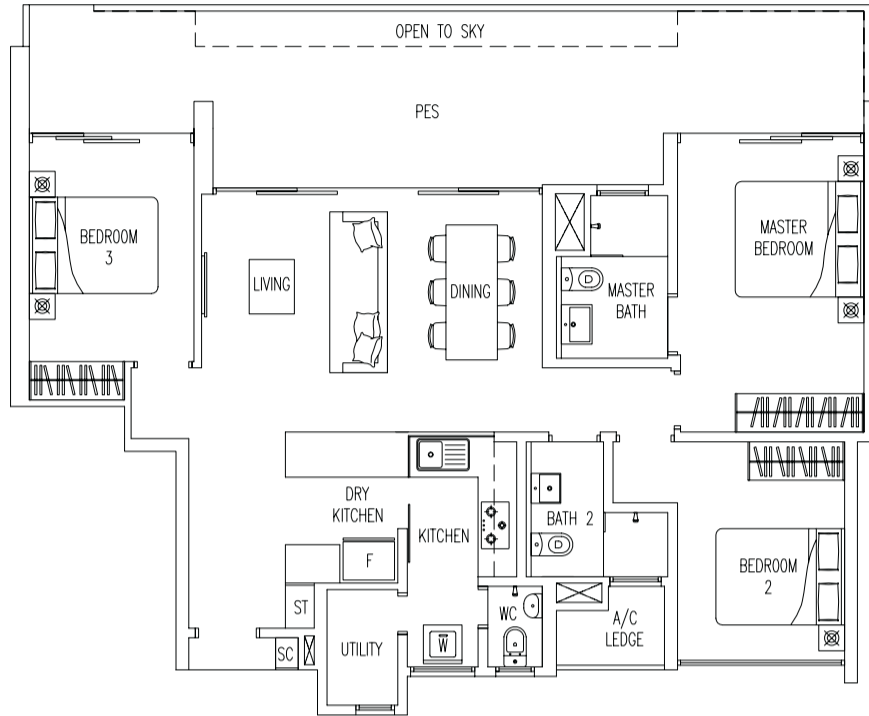
3 BEDROOM

Type B4-P

125 sq m / 1346 sq ft

01-11

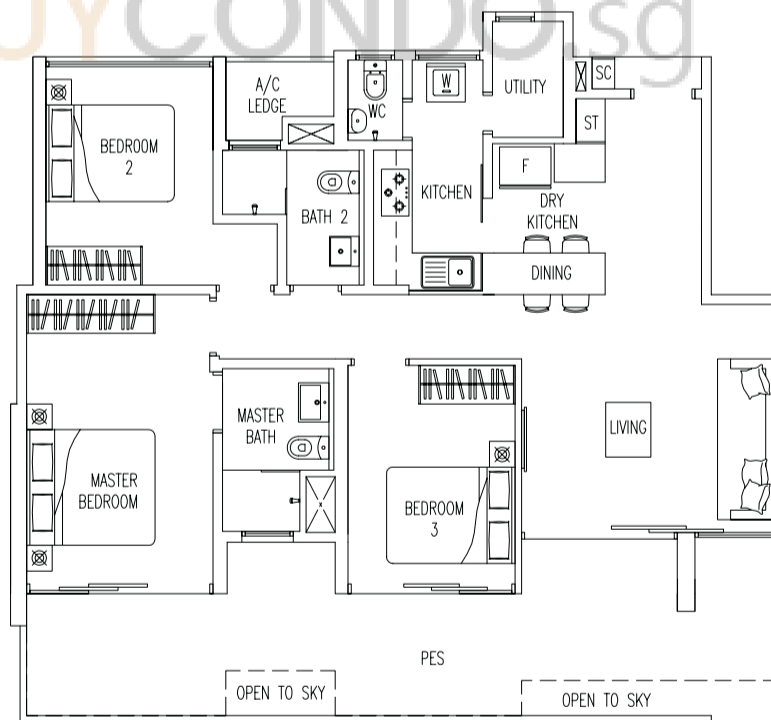
VH



Type B4-P1

117 sq m / 1259 sq ft

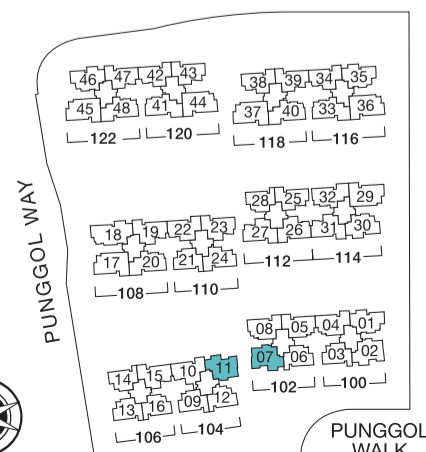
01-07



Area includes A/C ledge, balcony, PES, roof terrace and void area. Some units are mirror images of the apartment plans shown in the brochure. Please refer to the key plans for orientation. The plans are subject to change as may be approved by the relevant authorities. All floor areas are approximate measurements only and are subject to government resurvey.

Abbreviation : A/C ledge (Aircon Ledge), PES (Private Enclosed Space), SC (Shoe Cabinet) and ST (Store)

PUNGGOL FIELD



Key plan is not to scale

PUNGGOL WALK

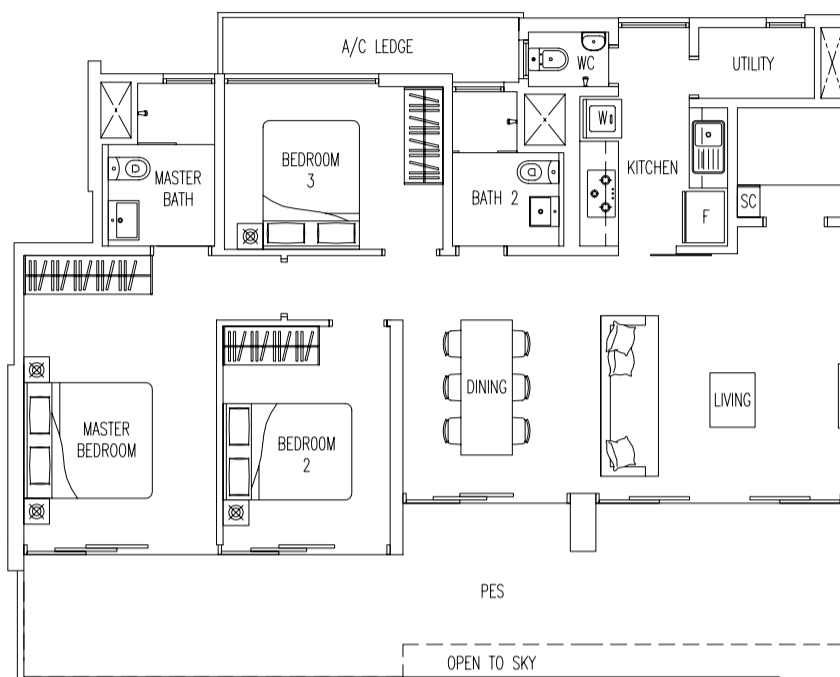
3 BEDROOM

Type B5-P

123 sq m / 1324 sq ft

05-17

VH

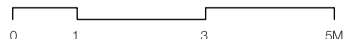
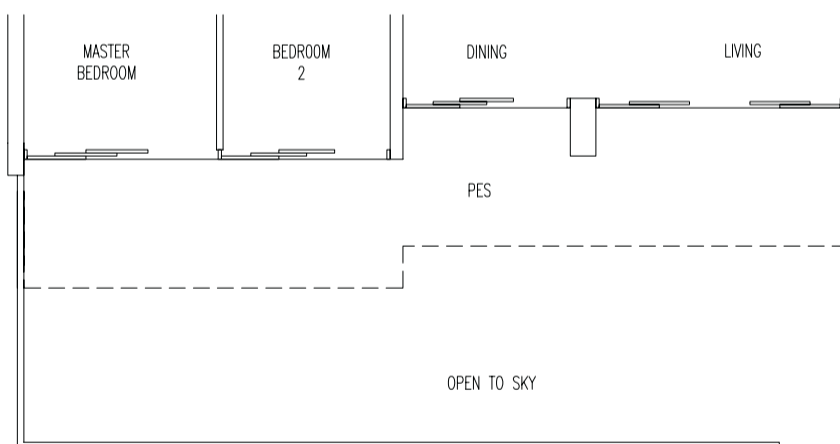


Type B5-P1

156 sq m / 1679 sq ft

05-45

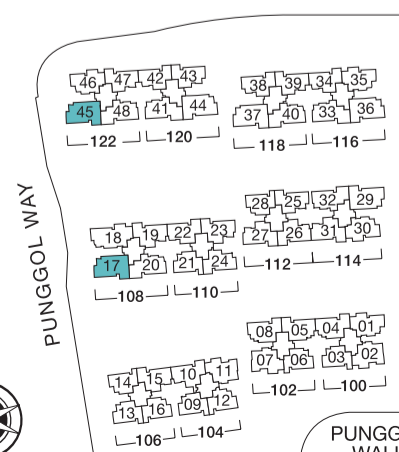
VH



Area includes A/C ledge, balcony, PES, roof terrace and void area. Some units are mirror images of the apartment plans shown in the brochure. Please refer to the key plans for orientation. The plans are subject to change as may be approved by the relevant authorities. All floor areas are approximate measurements only and are subject to government resurvey.

Abbreviation : A/C ledge (Aircon Ledge), PES (Private Enclosed Space), SC (Shoe Cabinet) and ST (Store)

PUNGGOL FIELD



Key plan is not to scale

PUNGGOL WALK

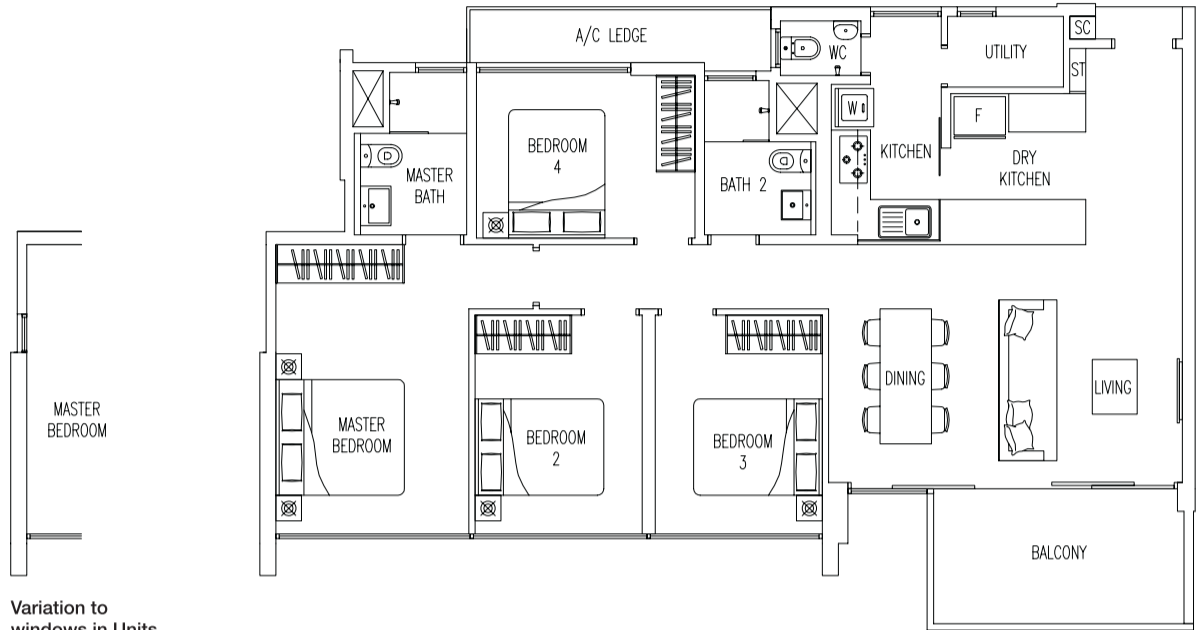
4 BEDROOM

Type C

VH

115 sq m / 1238 sq ft

- # 06-17 to # 16-17
- # 02-29 to # 16-29
- # 02-36 to # 16-36
- # 02-37 to # 16-37
- # 02-44 to # 16-44
- # 06-45 to # 16-45



Variation to windows in Units

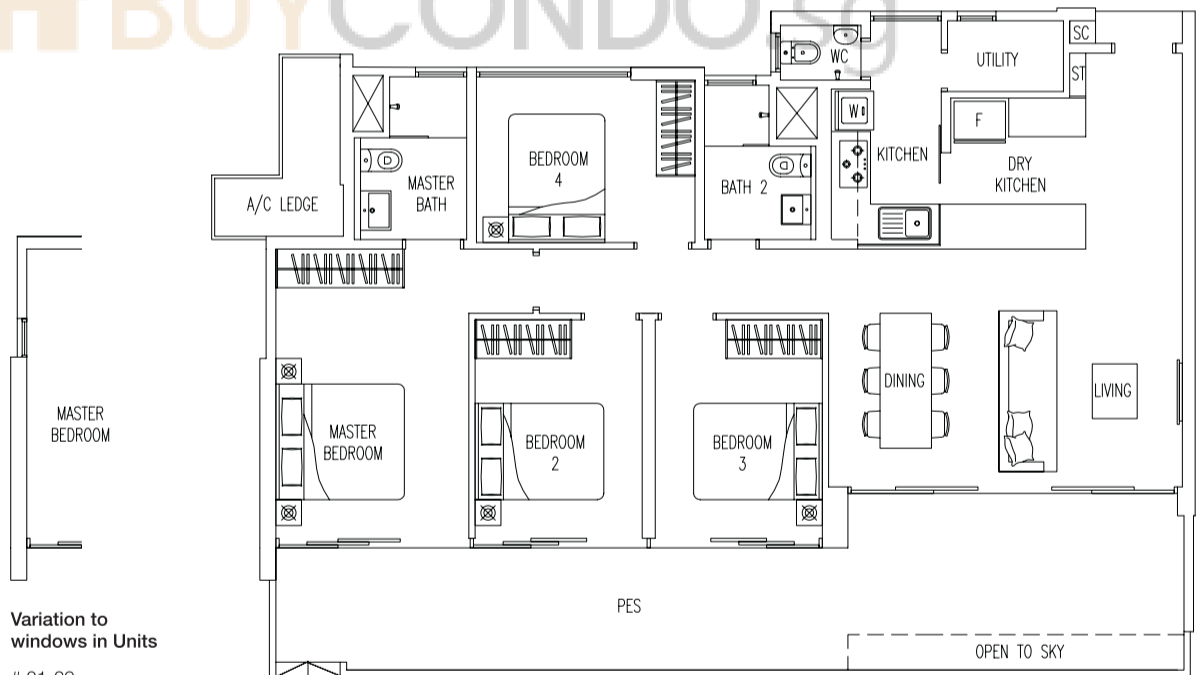
- # 02-29 to # 16-29
- # 02-36 to # 16-36
- # 02-37 to # 16-37

Type C-P

VH

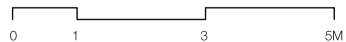
140 sq m / 1507 sq ft

- # 01-29
- # 01-36
- # 01-37
- # 01-44



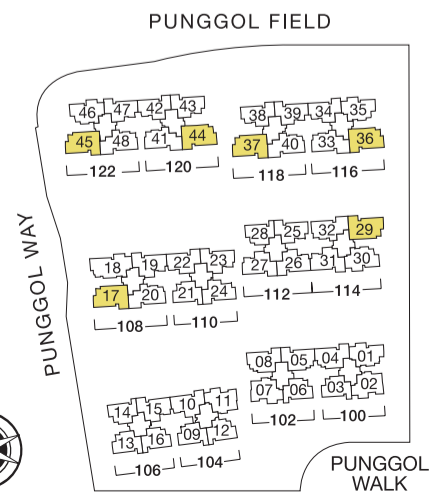
Variation to windows in Units

- # 01-29
- # 01-36
- # 01-37



Area includes A/C ledge, balcony, PES, roof terrace and void area. Some units are mirror images of the apartment plans shown in the brochure. Please refer to the key plans for orientation. The plans are subject to change as may be approved by the relevant authorities. All floor areas are approximate measurements only and are subject to government resurvey.

Abbreviation : A/C ledge (Aircon Ledge), PES (Private Enclosed Space), SC (Shoe Cabinet) and ST (Store)



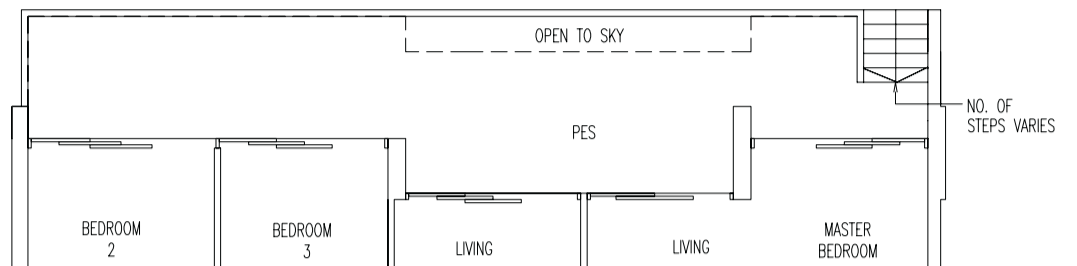
Key plan is not to scale

3 BEDROOM (Dual Key)

Type DK1-P **VH**

134 sq m / 1442 sq ft

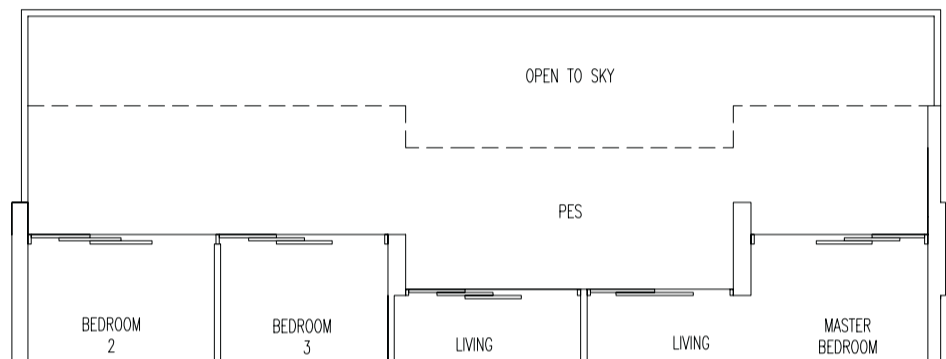
01-01
01-30



Type DK1-P1 **VH**

156 sq m / 1679 sq ft

05-46

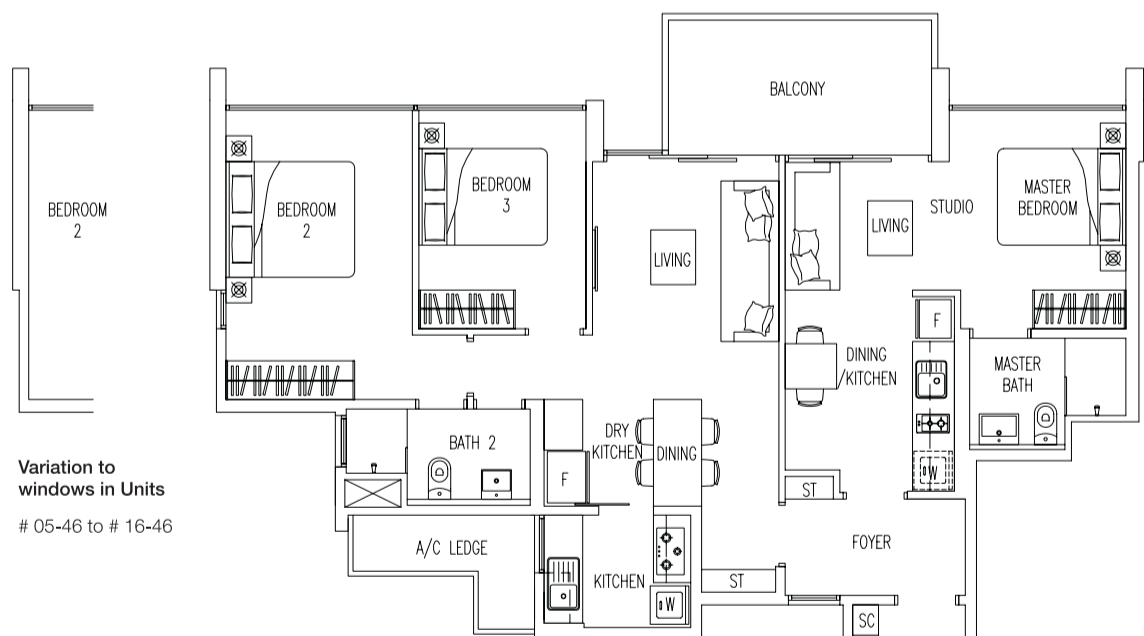


BUYCONDO.sg

Type DK1 **VH**

104 sq m / 1119 sq ft

02-01 to # 16-01
02-30 to # 16-30
05-35 to # 16-35
06-46 to # 16-46

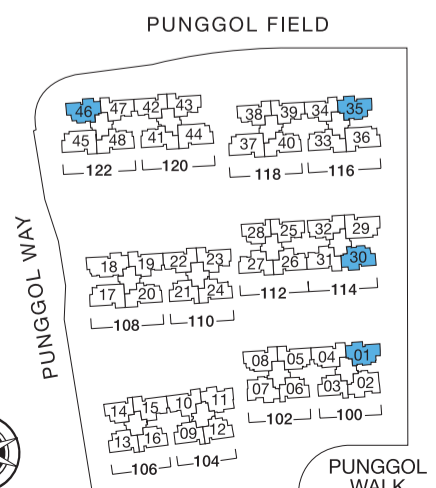


Variation to windows in Units
05-46 to # 16-46



Area includes A/C ledge, balcony, PES, roof terrace and void area. Some units are mirror images of the apartment plans shown in the brochure. Please refer to the key plans for orientation. The plans are subject to change as may be approved by the relevant authorities. All floor areas are approximate measurements only and are subject to government resurvey.

Abbreviation : A/C ledge (Aircon Ledge), PES (Private Enclosed Space), SC (Shoe Cabinet) and ST (Store)



Key plan is not to scale

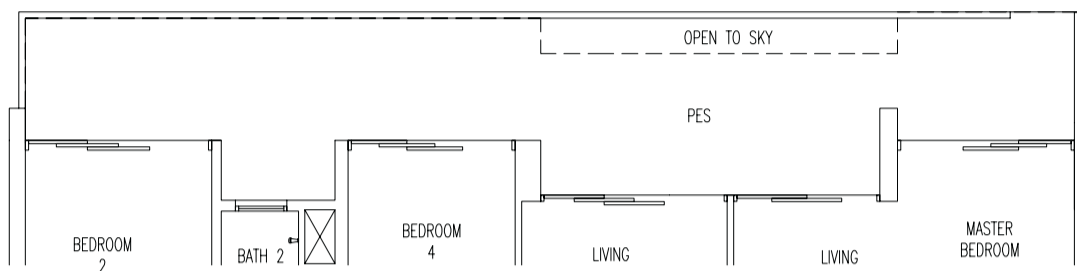
4 BEDROOM (Dual Key)

Type DK2-P

VH

159 sq m / 1711 sq ft

05-18

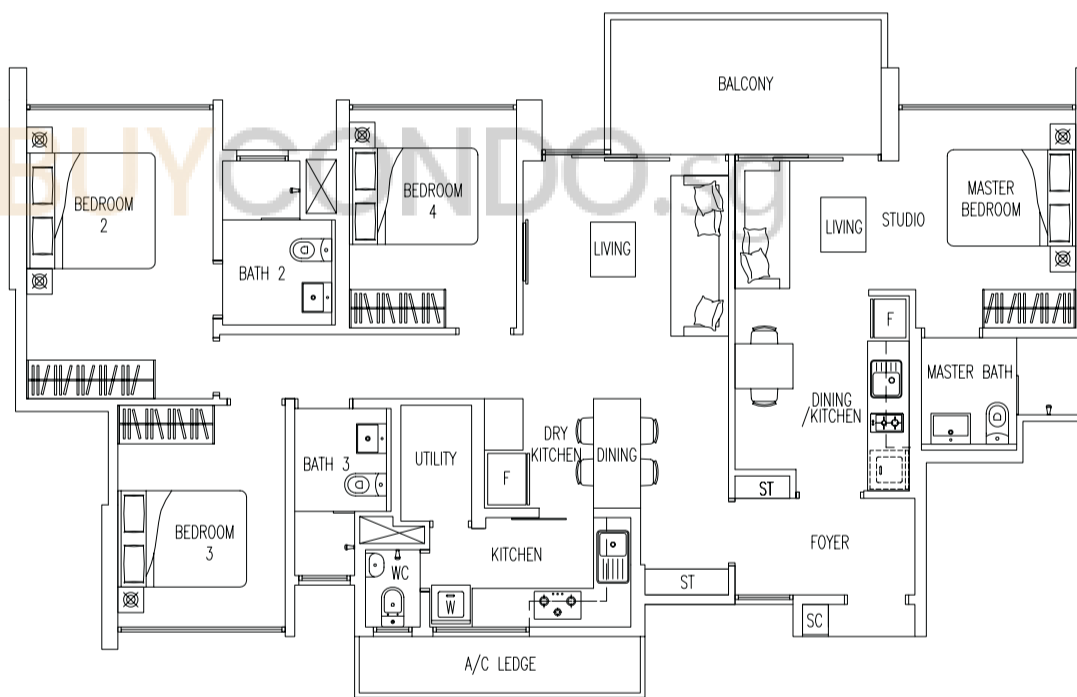


Type DK2

VH

128 sq m / 1378 sq ft

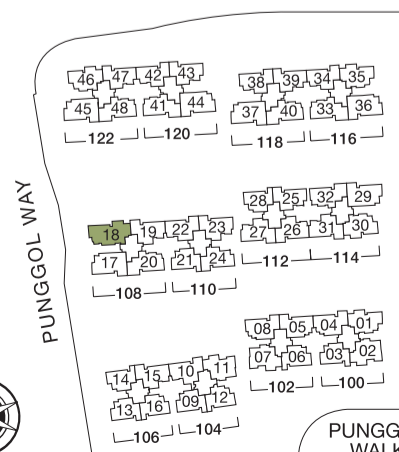
06-18 to # 16-18



Area includes A/C ledge, balcony, PES, roof terrace and void area. Some units are mirror images of the apartment plans shown in the brochure. Please refer to the key plans for orientation. The plans are subject to change as may be approved by the relevant authorities. All floor areas are approximate measurements only and are subject to government resurvey.

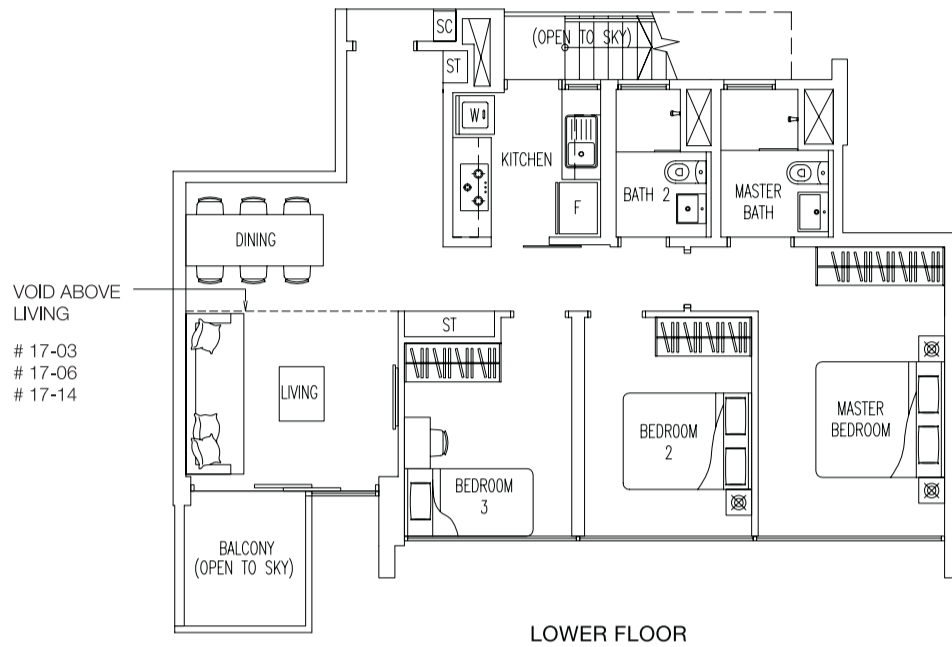
Abbreviation : A/C ledge (Aircon Ledge), PES (Private Enclosed Space), SC (Shoe Cabinet) and ST (Store)

PUNGGOL FIELD



Key plan is not to scale

PENTHOUSE - 3 BEDROOM

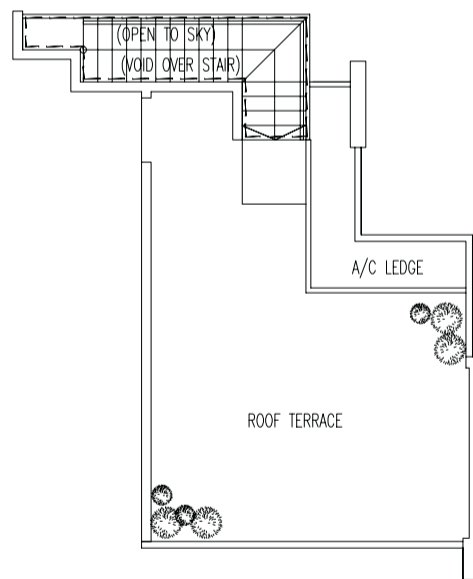


LOWER FLOOR



Variation to windows in Units

17-12



UPPER FLOOR

Type A1-PH

121 sq m / 1302 sq ft
(Inclusive of 5 sq m of void area)

- # 17-09
- # 17-12
- # 17-13
- # 17-16
- # 17-21
- # 17-25

131 sq m / 1410 sq ft
(Inclusive of 15 sq m of void area)

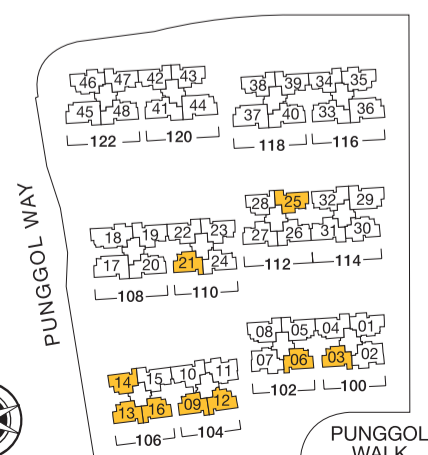
- # 17-03
- # 17-06
- # 17-14



Area includes A/C ledge, balcony, PES, roof terrace and void area. Some units are mirror images of the apartment plans shown in the brochure. Please refer to the key plans for orientation. The plans are subject to change as may be approved by the relevant authorities. All floor areas are approximate measurements only and are subject to government resurvey.

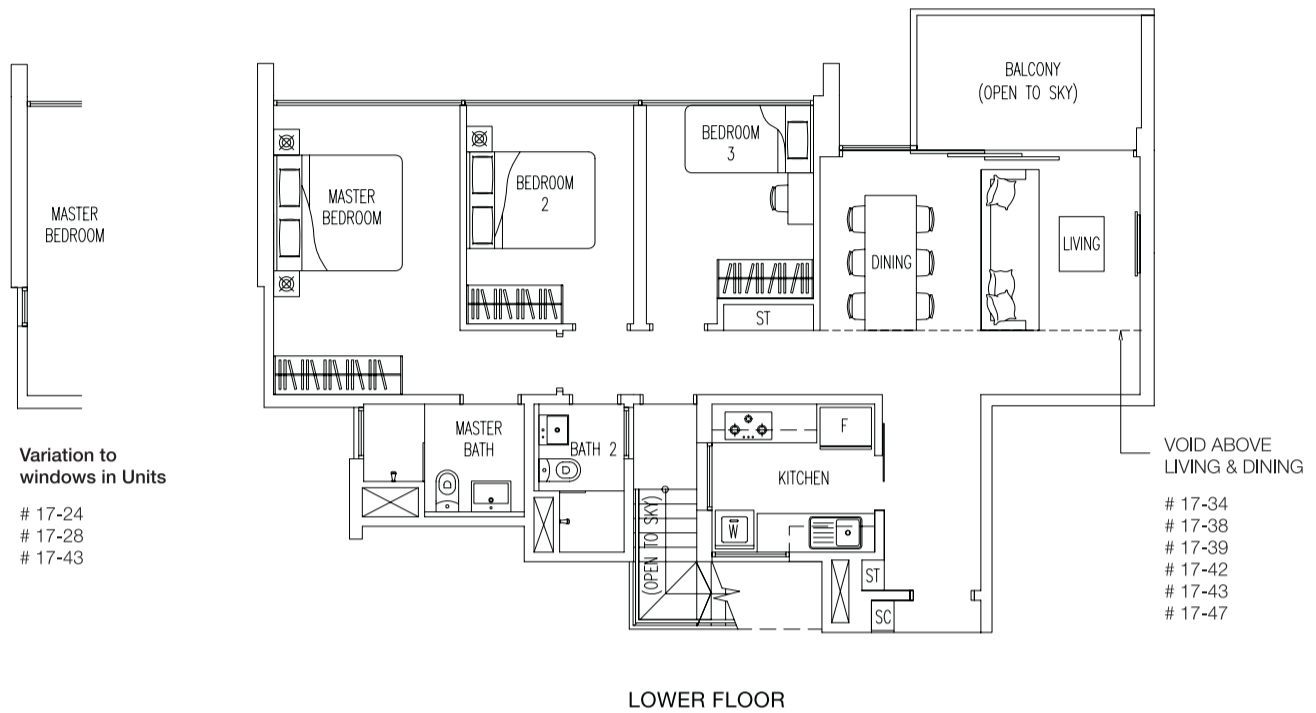
Abbreviation : A/C ledge (Aircon Ledge), PES (Private Enclosed Space), SC (Shoe Cabinet) and ST (Store)

PUNGGOL FIELD



Key plan is not to scale

PENTHOUSE - 3 BEDROOM



LOWER FLOOR



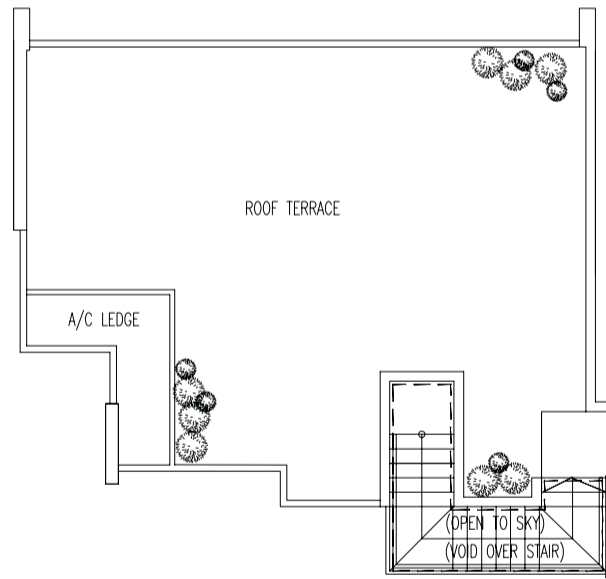
Type A2-PH **VH**

157 sq m / 1690 sq ft
(Inclusive of 6 sq m of void area)

- # 17-24
- # 17-28

171 sq m / 1841 sq ft
(Inclusive of 20 sq m of void area)

- # 17-34
- # 17-38
- # 17-39
- # 17-42
- # 17-43
- # 17-47



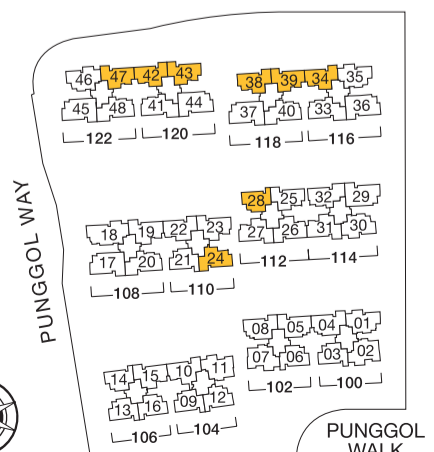
UPPER FLOOR



Area includes A/C ledge, balcony, PES, roof terrace and void area. Some units are mirror images of the apartment plans shown in the brochure. Please refer to the key plans for orientation. The plans are subject to change as may be approved by the relevant authorities. All floor areas are approximate measurements only and are subject to government resurvey.

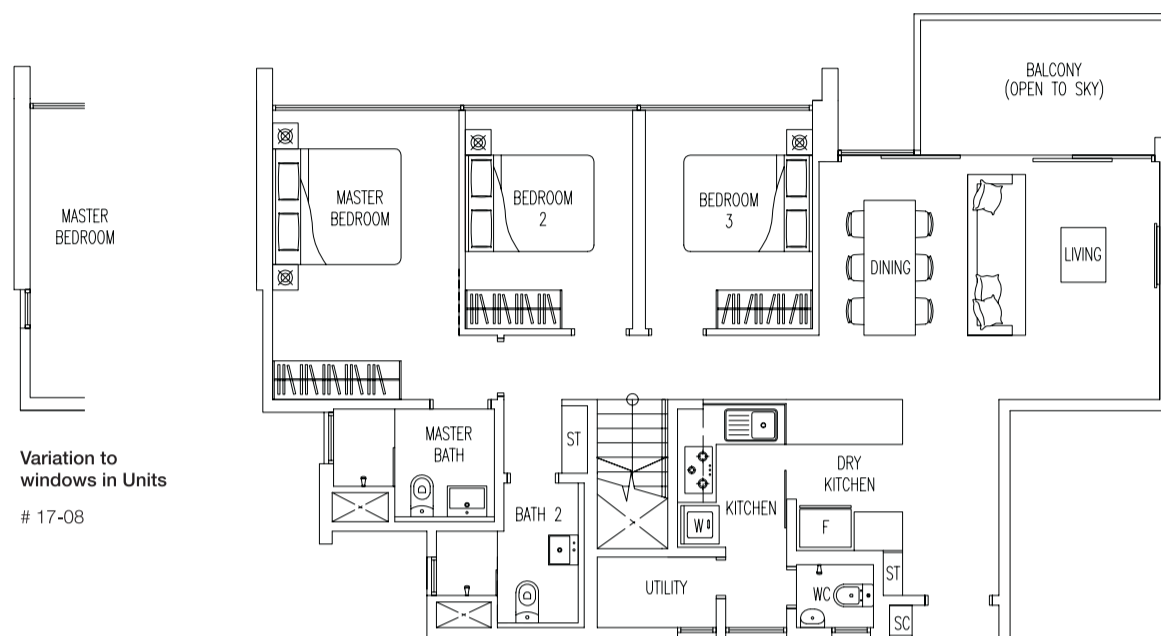
Abbreviation : A/C ledge (Aircon Ledge), PES (Private Enclosed Space), SC (Shoe Cabinet) and ST (Store)

PUNGGOL FIELD



Key plan is not to scale

PENTHOUSE - 3 BEDROOM



Variation to windows in Units
17-08

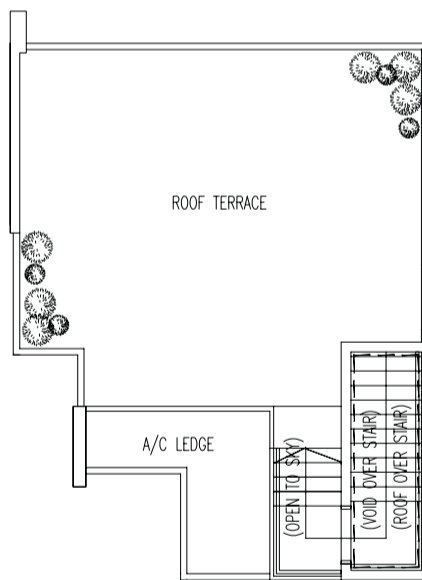
LOWER FLOOR



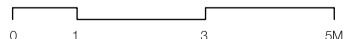
Type B1-PH **VH**

142 sq m / 1528 sq ft
(Inclusive of 4 sq m of void area)

- # 17-04
- # 17-05
- # 17-08



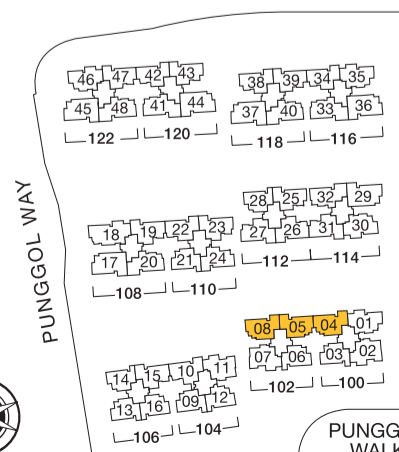
UPPER FLOOR



Area includes A/C ledge, balcony, PES, roof terrace and void area. Some units are mirror images of the apartment plans shown in the brochure. Please refer to the key plans for orientation. The plans are subject to change as may be approved by the relevant authorities. All floor areas are approximate measurements only and are subject to government resurvey.

Abbreviation : A/C ledge (Aircon Ledge), PES (Private Enclosed Space), SC (Shoe Cabinet) and ST (Store)

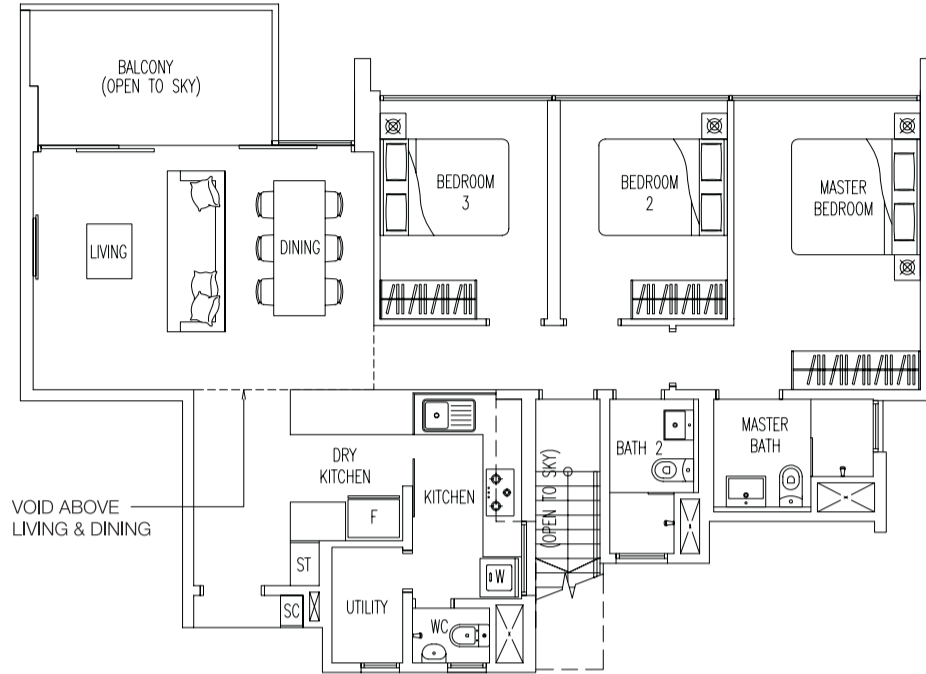
PUNGGOL FIELD



Key plan is not to scale

PUNGGOL WALK

PENTHOUSE - 3 BEDROOM



LOWER FLOOR

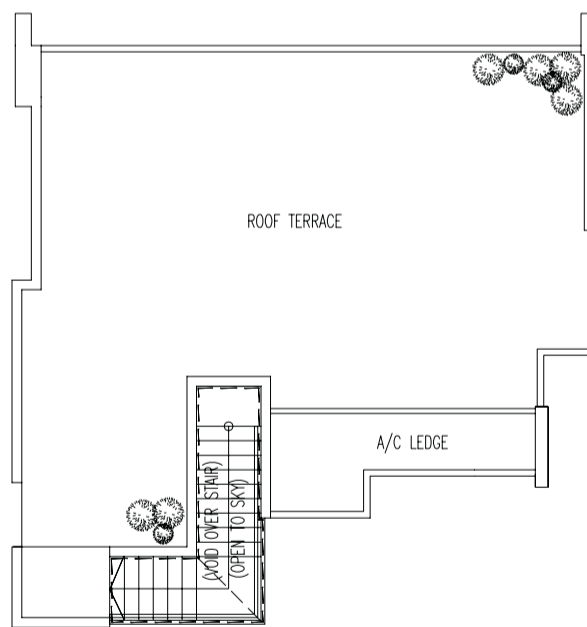


Type B2-PH

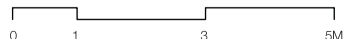
VH

185 sq m / 1991 sq ft
(Inclusive of 21 sq m of void area)

- # 17-10
- # 17-15
- # 17-19
- # 17-22
- # 17-23
- # 17-26
- # 17-27
- # 17-31



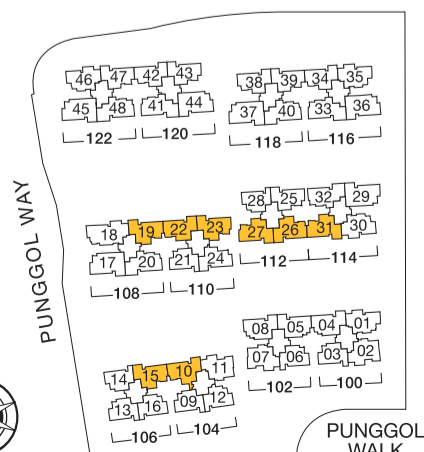
UPPER FLOOR



Area includes A/C ledge, balcony, PES, roof terrace and void area. Some units are mirror images of the apartment plans shown in the brochure. Please refer to the key plans for orientation. The plans are subject to change as may be approved by the relevant authorities. All floor areas are approximate measurements only and are subject to government resurvey.

Abbreviation : A/C ledge (Aircon Ledge), PES (Private Enclosed Space), SC (Shoe Cabinet) and ST (Store)

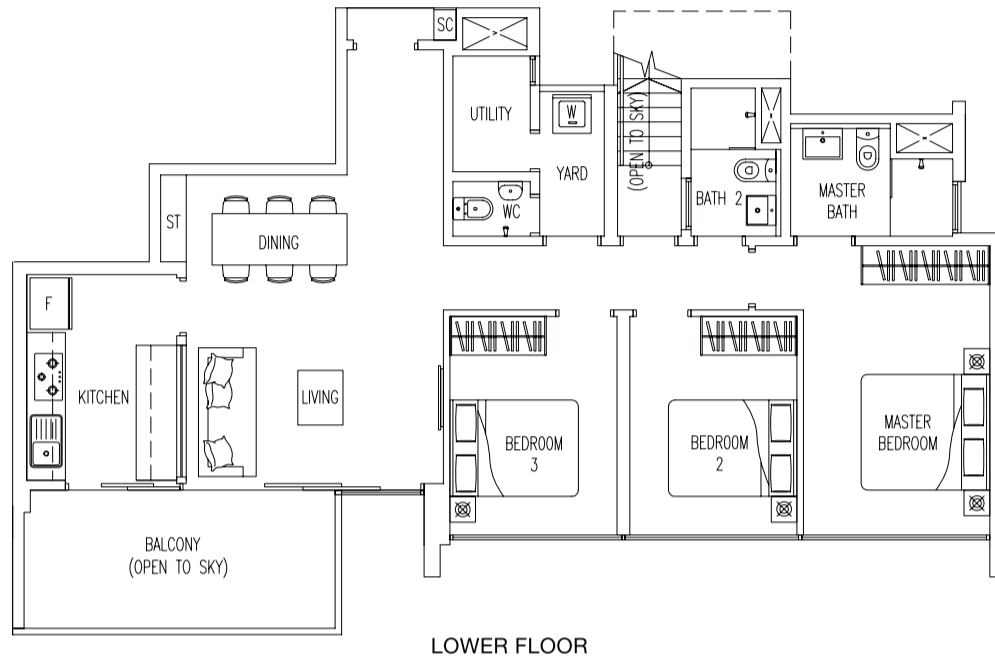
PUNGGOL FIELD



Key plan is not to scale

PUNGGOL WALK

PENTHOUSE - 3 BEDROOM



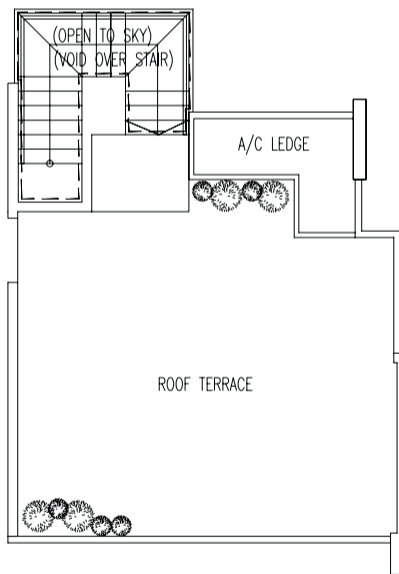
LOWER FLOOR



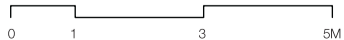
Type B3-PH **VH**

148 sq m / 1593 sq ft
(Inclusive of 6 sq m of void area)

- # 17-20
- # 17-32
- # 17-33
- # 17-40
- # 17-41
- # 17-48



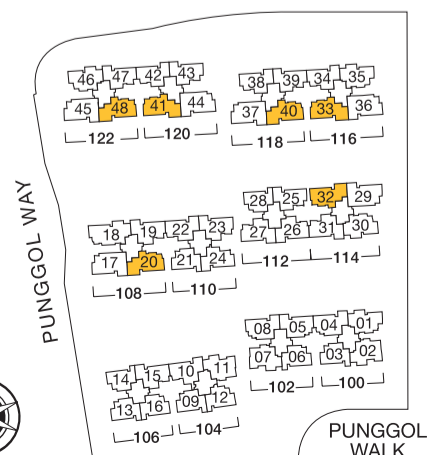
UPPER FLOOR



Area includes A/C ledge, balcony, PES, roof terrace and void area. Some units are mirror images of the apartment plans shown in the brochure. Please refer to the key plans for orientation. The plans are subject to change as may be approved by the relevant authorities. All floor areas are approximate measurements only and are subject to government resurvey.

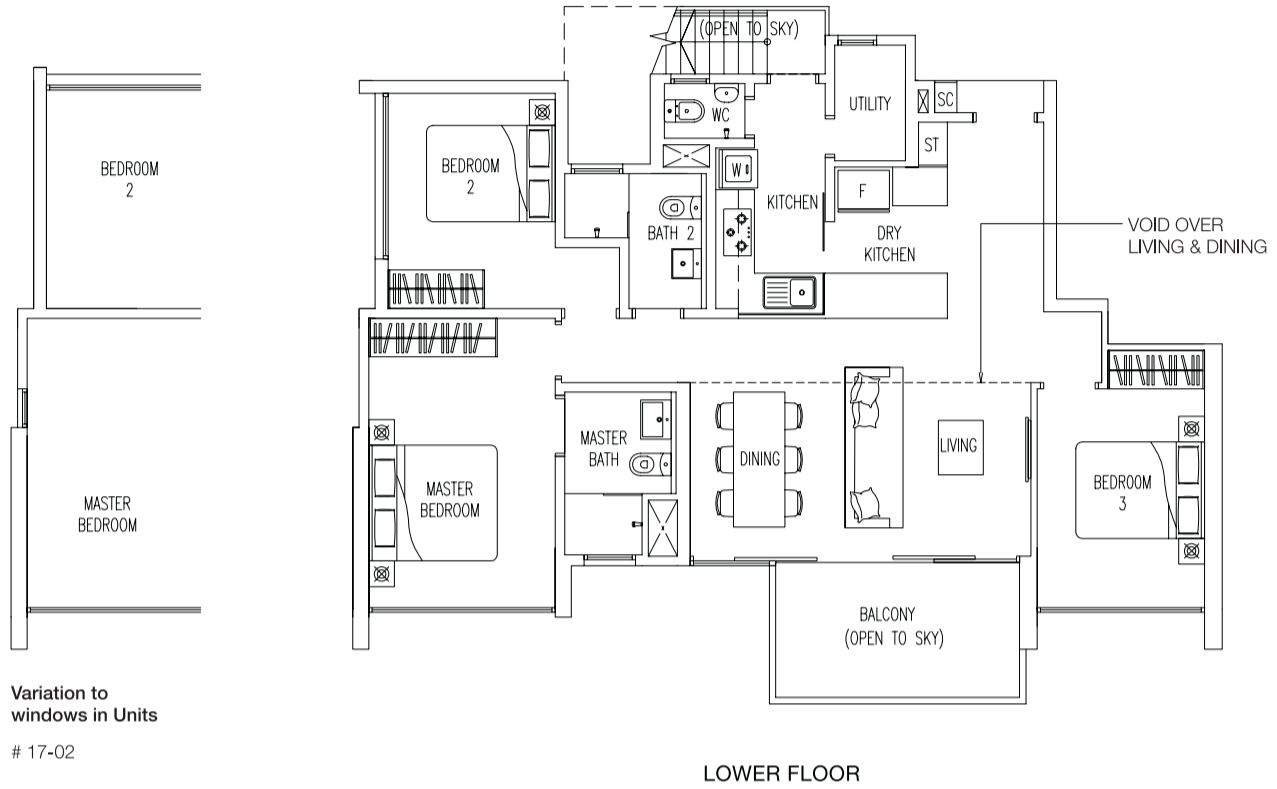
Abbreviation : A/C ledge (Aircon Ledge), PES (Private Enclosed Space), SC (Shoe Cabinet) and ST (Store)

PUNGGOL FIELD



Key plan is not to scale

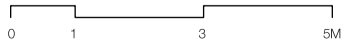
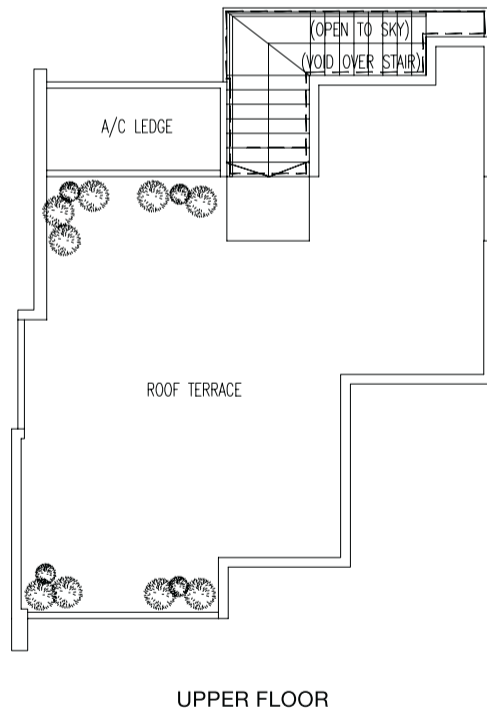
PENTHOUSE - 3 BEDROOM



Type B4-PH **VH**

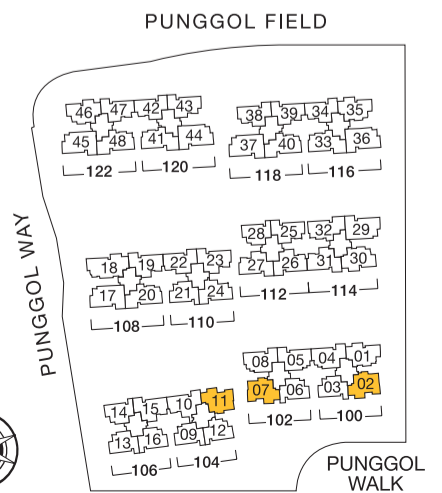
174 sq m / 1873 sq ft
(Inclusive of 21 sq m of void area)

- # 17-02
- # 17-07
- # 17-11

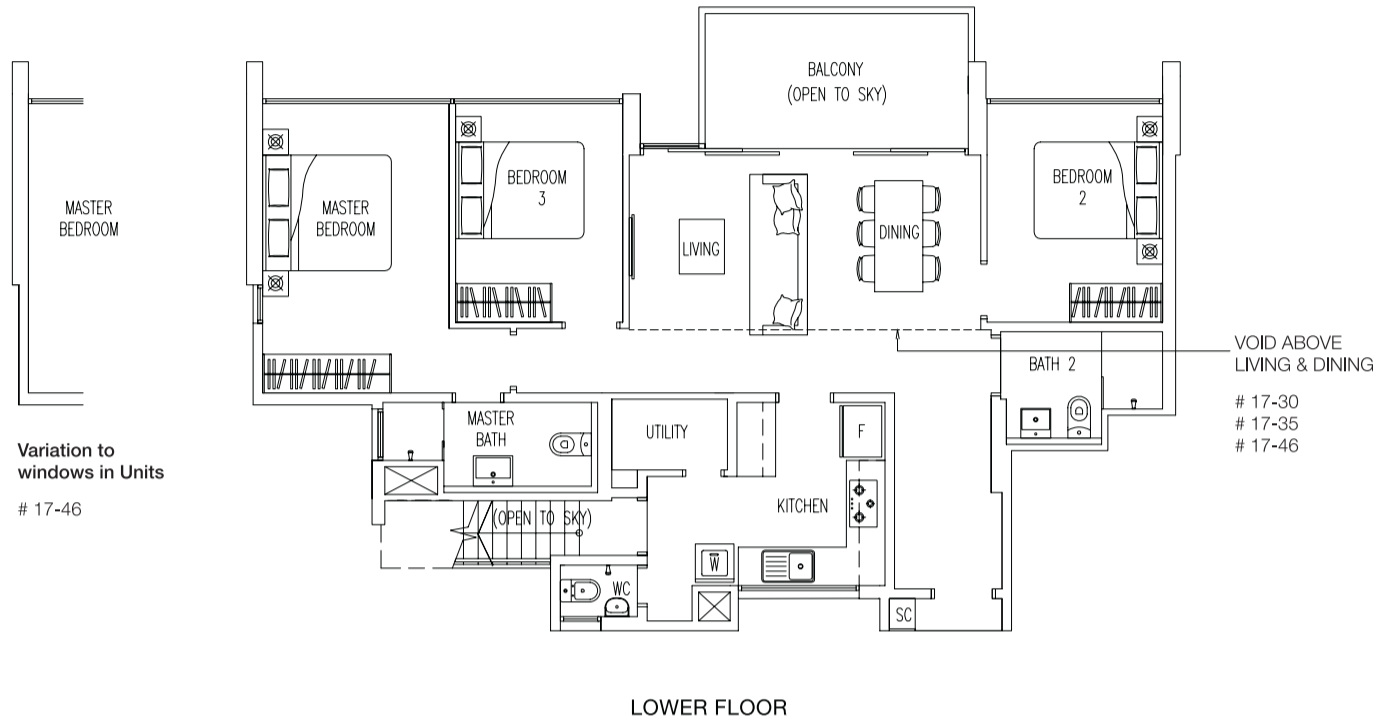


Area includes A/C ledge, balcony, PES, roof terrace and void area. Some units are mirror images of the apartment plans shown in the brochure. Please refer to the key plans for orientation. The plans are subject to change as may be approved by the relevant authorities. All floor areas are approximate measurements only and are subject to government resurvey.

Abbreviation : A/C ledge (Aircon Ledge), PES (Private Enclosed Space), SC (Shoe Cabinet) and ST (Store)



PENTHOUSE - 3 BEDROOM



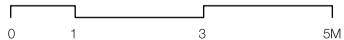
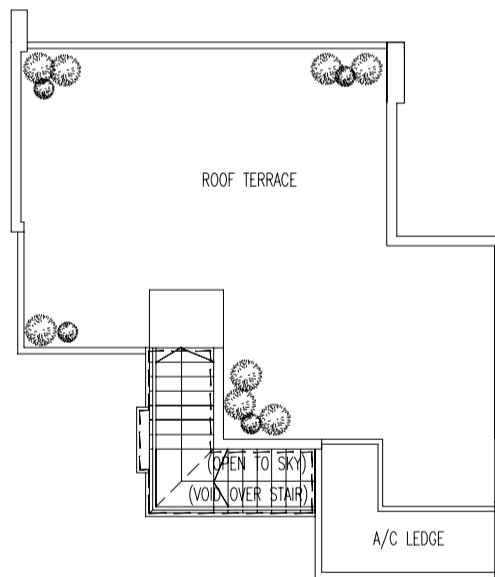
Type DK1-PH **VH**

149 sq m / 1604 sq ft
(Inclusive of 5 sq m of void area)

17-01

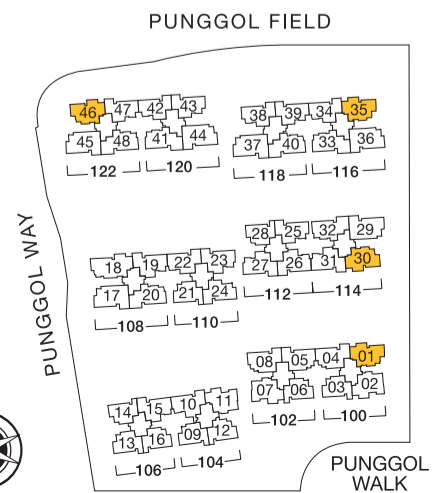
164 sq m / 1765 sq ft
(Inclusive of 20 sq m of void area)

17-30
17-35
17-46

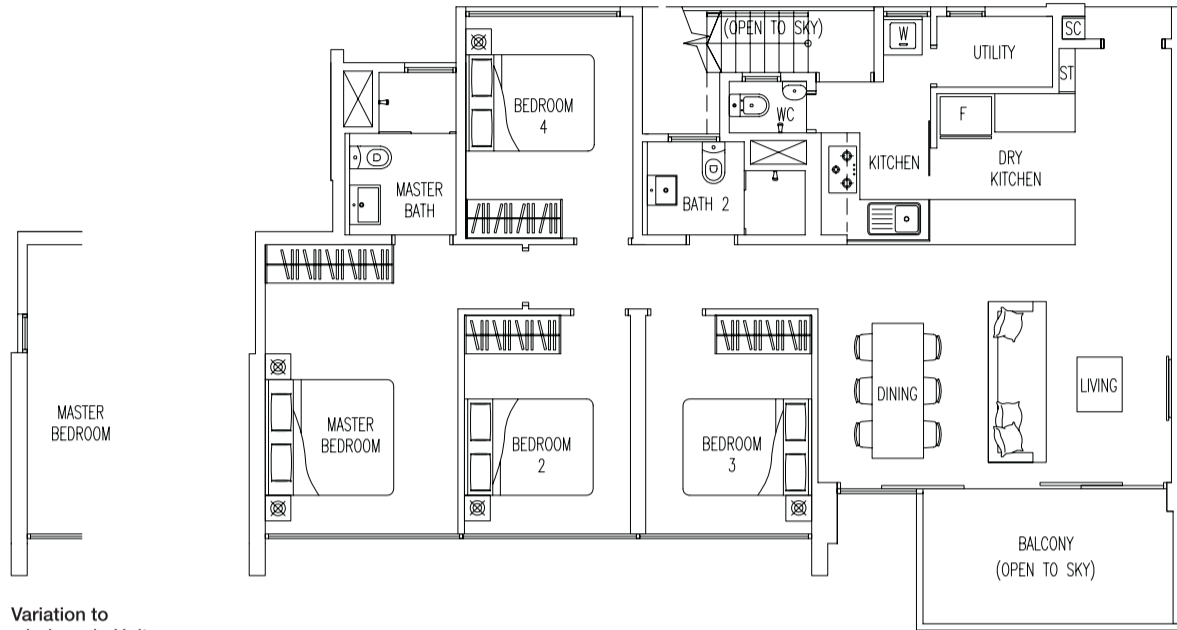


Area includes A/C ledge, balcony, PES, roof terrace and void area. Some units are mirror images of the apartment plans shown in the brochure. Please refer to the key plans for orientation. The plans are subject to change as may be approved by the relevant authorities. All floor areas are approximate measurements only and are subject to government resurvey.

Abbreviation : A/C ledge (Aircon Ledge), PES (Private Enclosed Space), SC (Shoe Cabinet) and ST (Store)



PENTHOUSE - 4 BEDROOM



Variation to windows in Units

- # 17-29
- # 17-36
- # 17-37

LOWER FLOOR

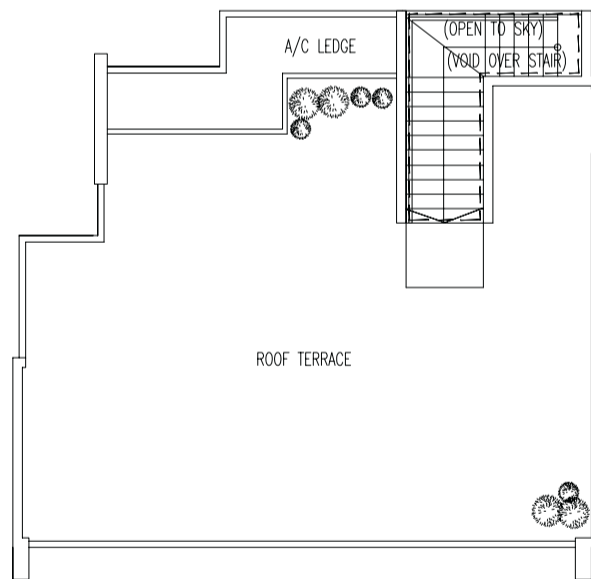


Type C-PH

VH

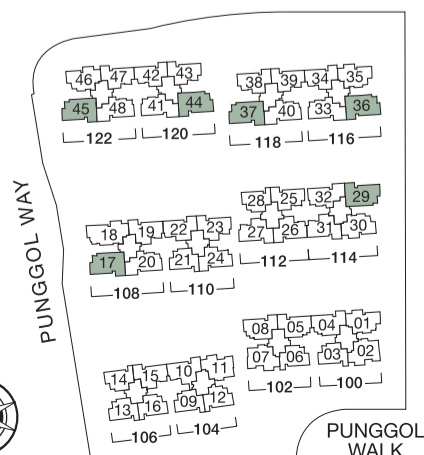
183 sq m / 1970 sq ft
(Inclusive of 6 sq m of void area)

- # 17-17
- # 17-29
- # 17-36
- # 17-37
- # 17-44
- # 17-45



UPPER FLOOR

PUNGGOL FIELD



Key plan is not to scale



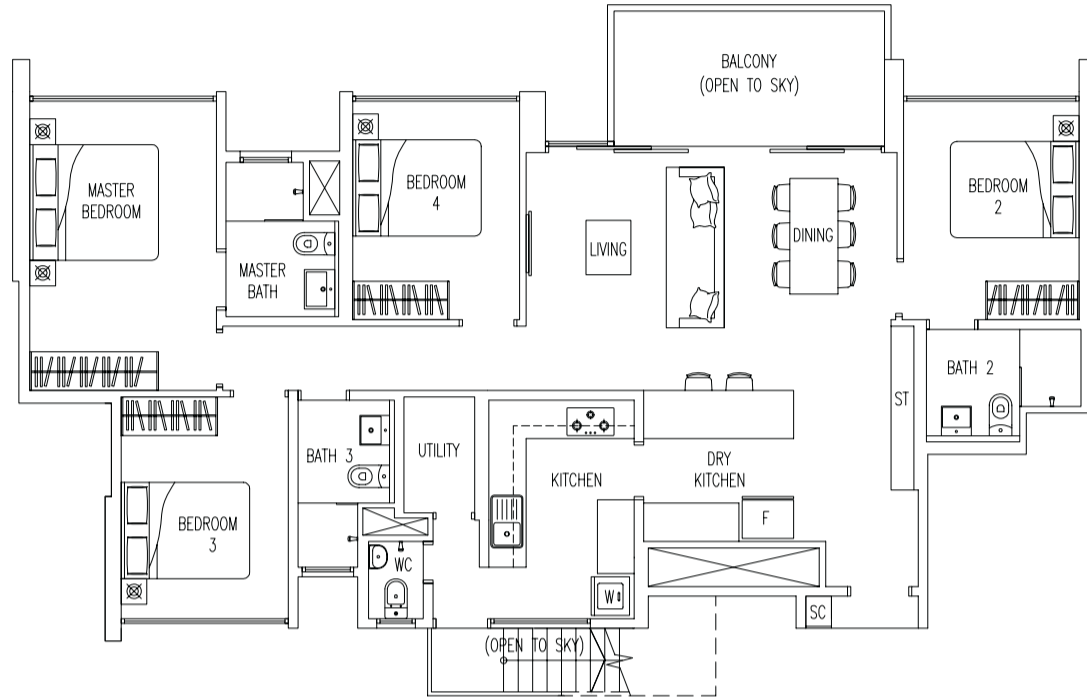
Area includes A/C ledge, balcony, PES, roof terrace and void area. Some units are mirror images of the apartment plans shown in the brochure. Please refer to the key plans for orientation. The plans are subject to change as may be approved by the relevant authorities. All floor areas are approximate measurements only and are subject to government resurvey.

Abbreviation : A/C ledge (Aircon Ledge), PES (Private Enclosed Space), SC (Shoe Cabinet) and ST (Store)



PUNGGOL WALK

PENTHOUSE - 4 BEDROOM



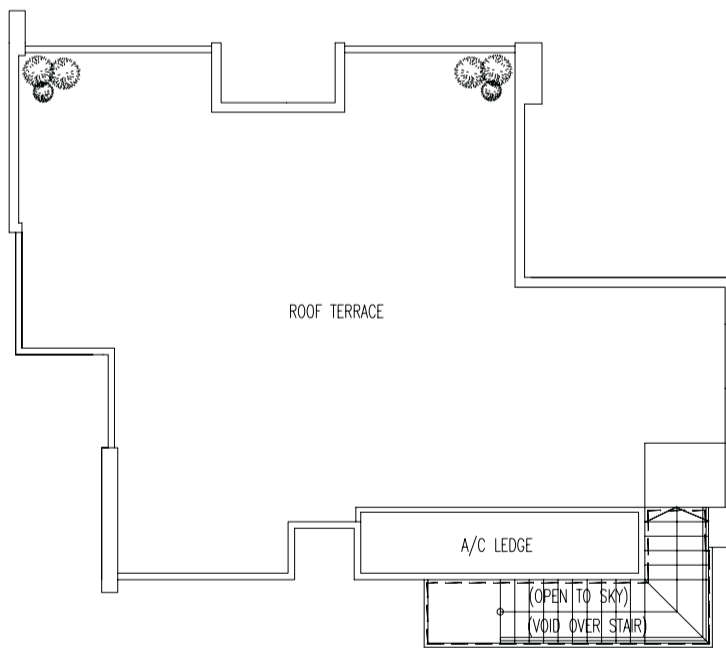
LOWER FLOOR



Type DK2-PH **VH**

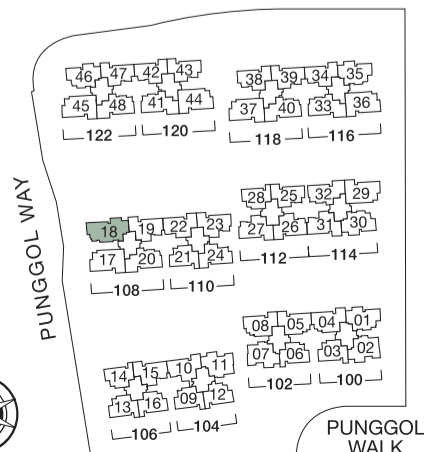
202 sq m / 2174 sq ft
(Inclusive of 6 sq m of void area)

17-18



UPPER FLOOR

PUNGGOL FIELD



Key plan is not to scale



Area includes A/C ledge, balcony, PES, roof terrace and void area. Some units are mirror images of the apartment plans shown in the brochure. Please refer to the key plans for orientation. The plans are subject to change as may be approved by the relevant authorities. All floor areas are approximate measurements only and are subject to government resurvey.

Abbreviation : A/C ledge (Aircon Ledge), PES (Private Enclosed Space), SC (Shoe Cabinet) and ST (Store)