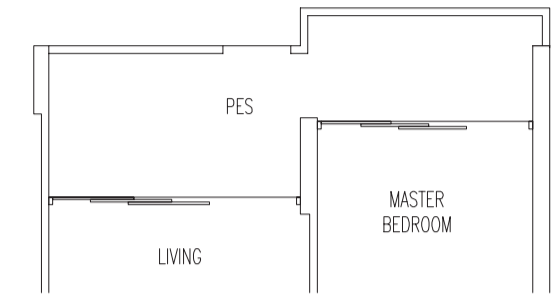


# SUITES

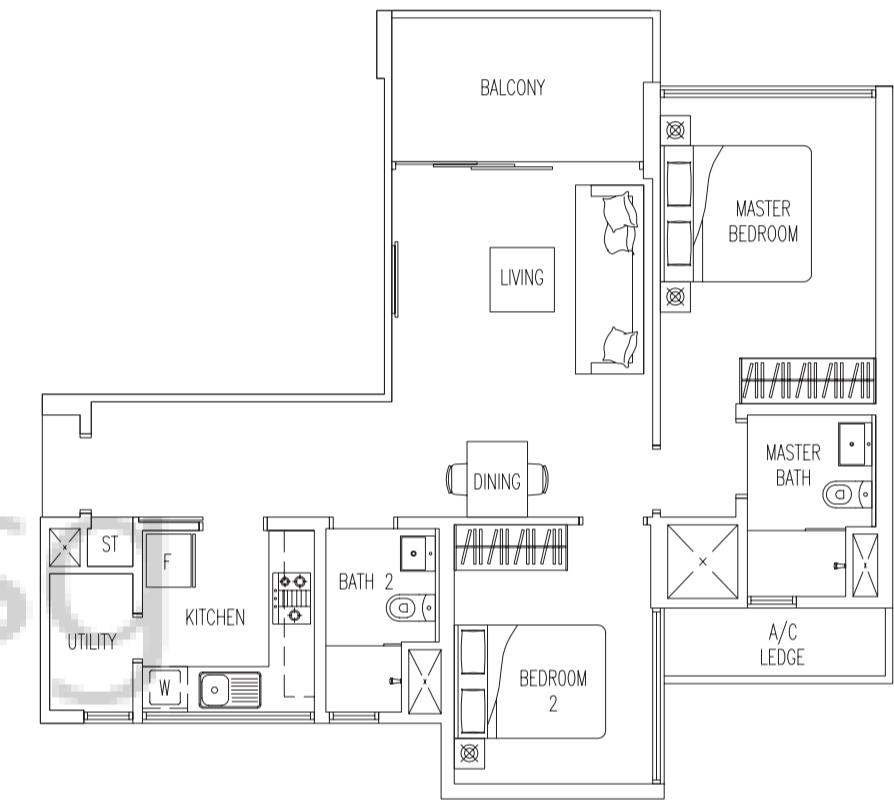
## 2-Bedroom

SUITES

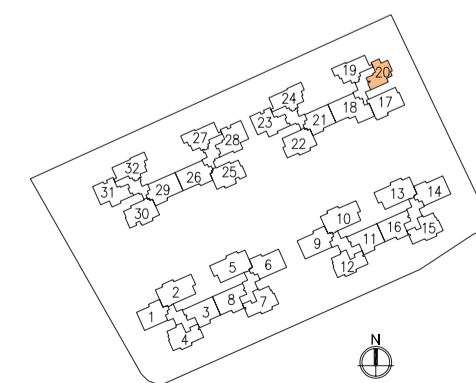
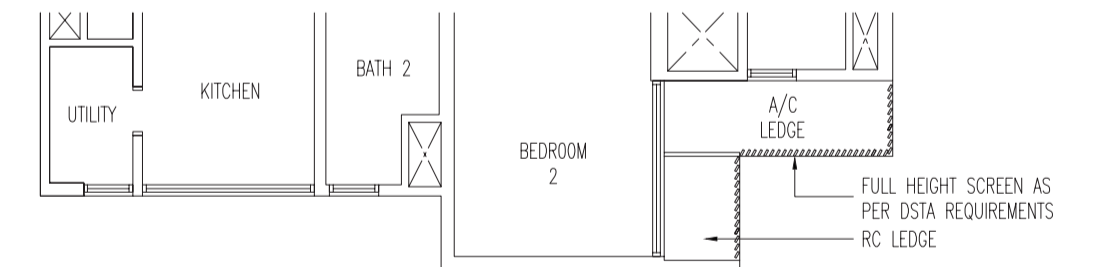
**Type A(P)**  
82 sq m / 883 sq ft  
#02-20



**Type A**  
77 sq m / 829 sq ft  
#03-20 To #13-20



**Type A(a)**  
77 sq m / 829 sq ft  
#14-20 - Open Balcony



Area includes A/C ledge, balcony, PES, roof terrace. Some units are mirror images of the apartment plans shown in the brochure. Please refer to the key plans for orientation. The plans are subject to change as may be approved by the relevant authorities. All floor areas are approximate measurements only and are subject to government resurvey. Abbreviation : A/C ledge (Aircon Ledge), PES (Private Enclosed Space), and ST (Store).

# VERANDAHhome

## 3-Bedroom

### Type B(P)-VH

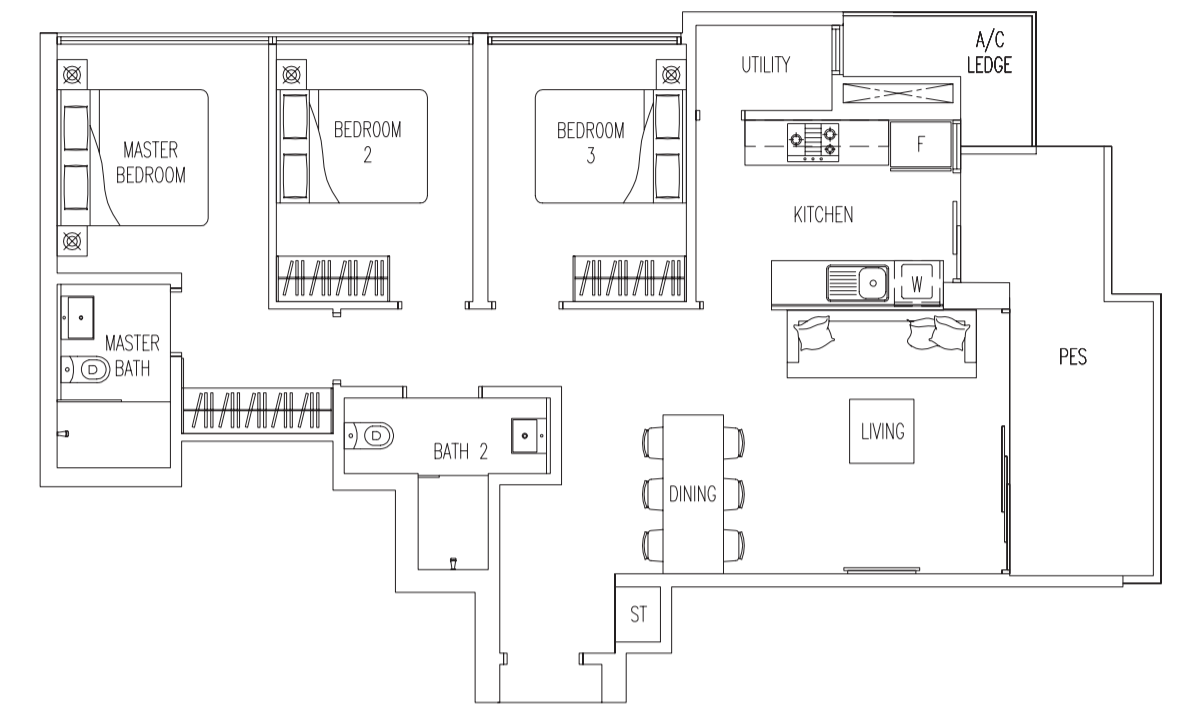
98 sq m / 1055 sq ft

#02-32

#02-27 (mirror)

#02-24

#02-19 (mirror)



### Type B-VH

96 sq m / 1033 sq ft

#03-32 To #13-32

#03-27 To #13-27 (mirror)

#03-24 To #13-24

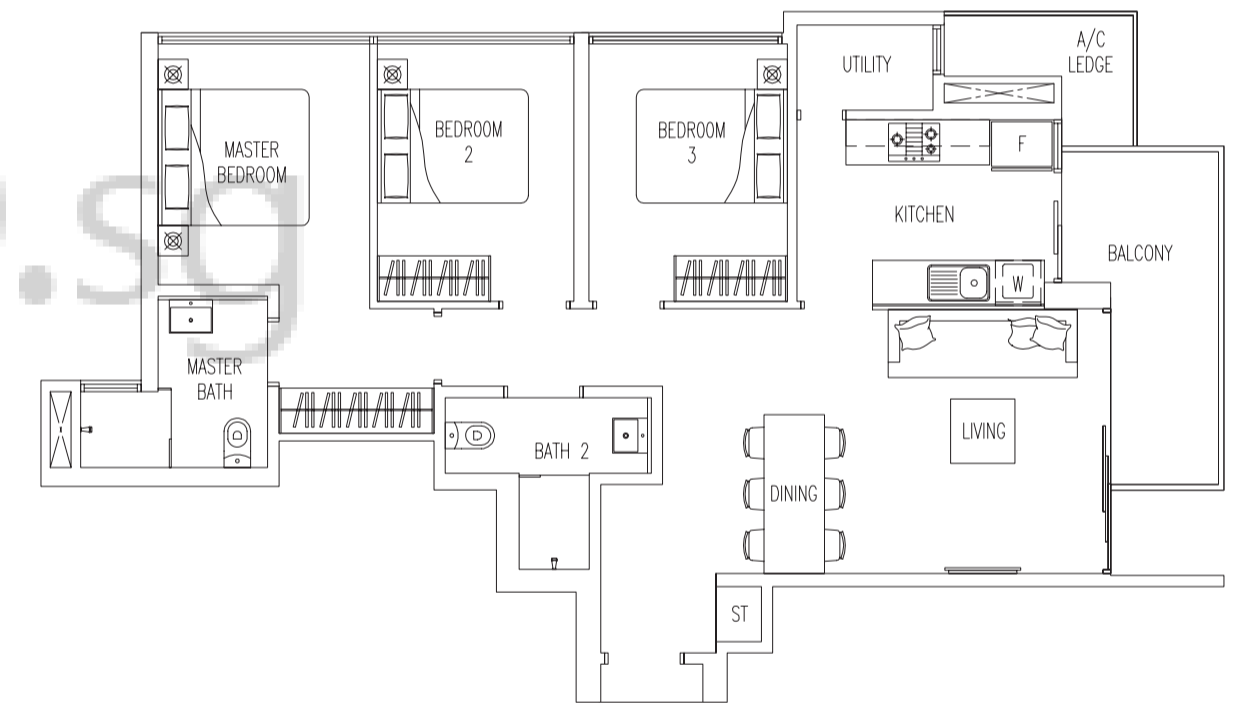
#03-19 To #13-19 (mirror)

#14-32 - Open Balcony

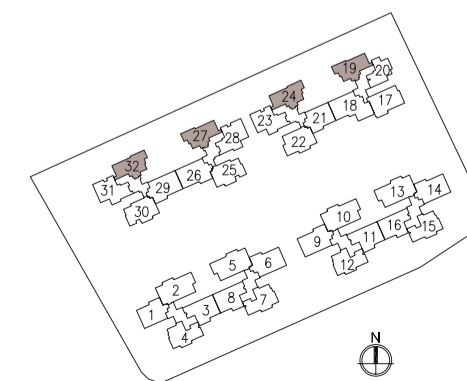
#14-27 - Open Balcony (mirror)

#14-24 - Open Balcony

#14-19 - Open Balcony (mirror)



**VERANDAHhome**  
PRIVATE BALCONY-VIEW



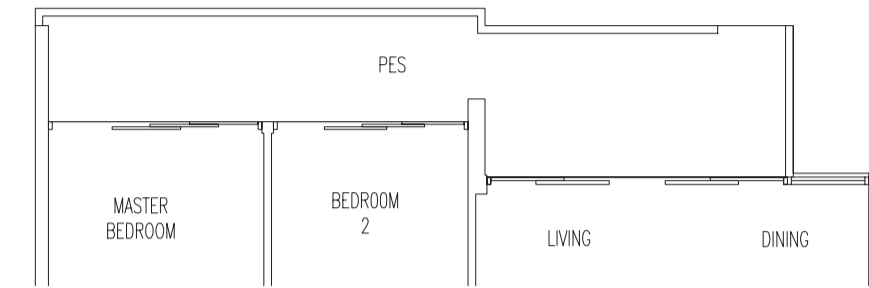
Area includes A/C ledge, balcony, PES, roof terrace. Some units are mirror images of the apartment plans shown in the brochure. Please refer to the key plans for orientation. The plans are subject to change as may be approved by the relevant authorities. All floor areas are approximate measurements only and are subject to government resurvey. Abbreviation : A/C ledge (Aircon Ledge), PES (Private Enclosed Space), and ST (Store).

# VISTAhome

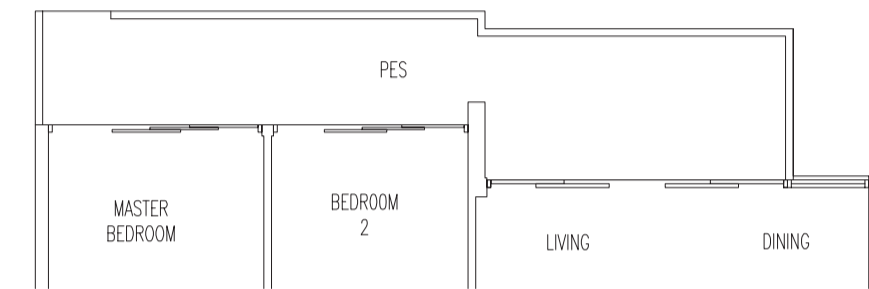
## 3-Bedroom



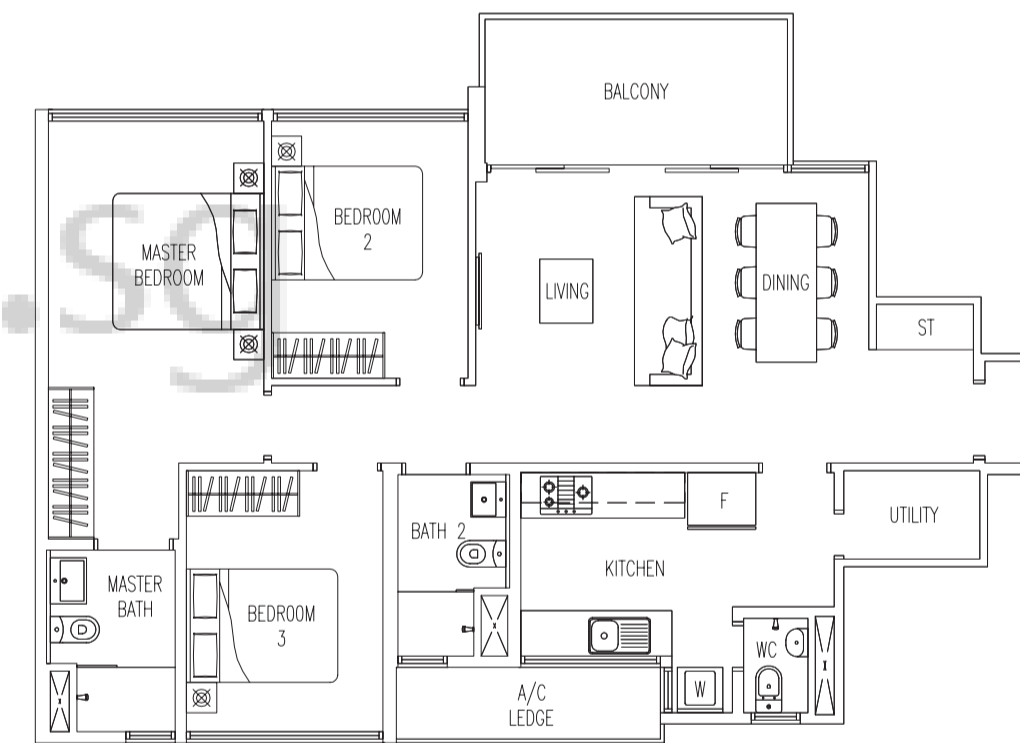
**Type B1(P1)-VT**  
107 sq m / 1152 sq ft  
#02-01



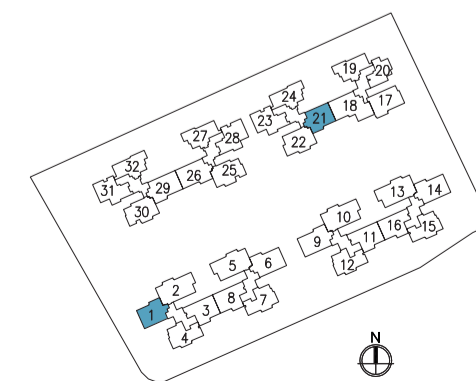
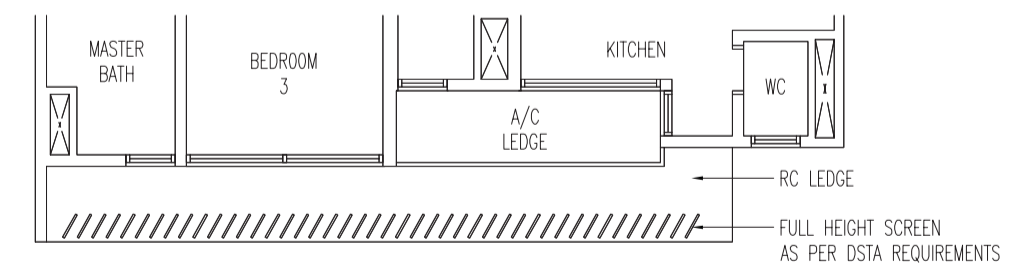
**Type B1(P)-VT**  
107 sq m / 1152 sq ft  
#02-21 (rotated)



**Type B1-VT**  
98 sq m / 1055 sq ft  
#03-21 To #13-21 (rotated)  
#03-01 To #13-01  
#14-21 - Open Balcony (rotated)



**Type B1(a)-VT**  
98 sq m / 1055 sq ft  
#14-01 - Open Balcony



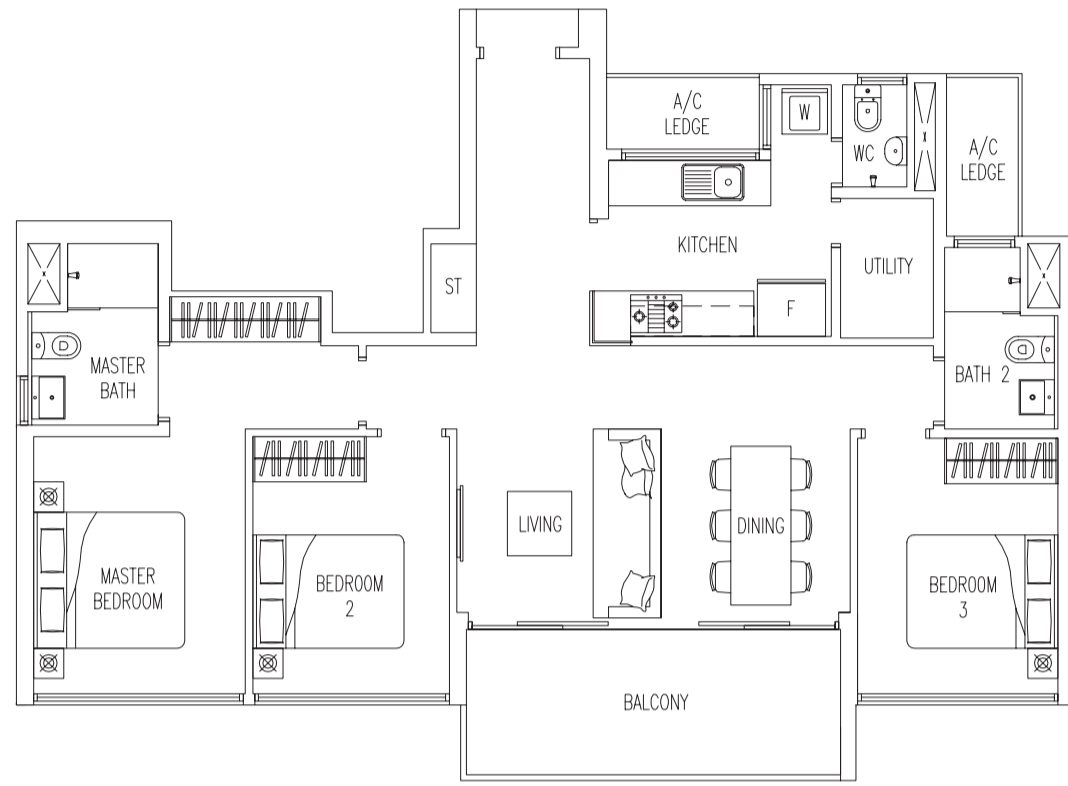
Area includes A/C ledge, balcony, PES, roof terrace. Some units are mirror images of the apartment plans shown in the brochure. Please refer to the key plans for orientation. The plans are subject to change as may be approved by the relevant authorities. All floor areas are approximate measurements only and are subject to government resurvey. Abbreviation : A/C ledge (Aircon Ledge), PES (Private Enclosed Space), and ST (Store).

# VISTAhome

## 3-Bedroom

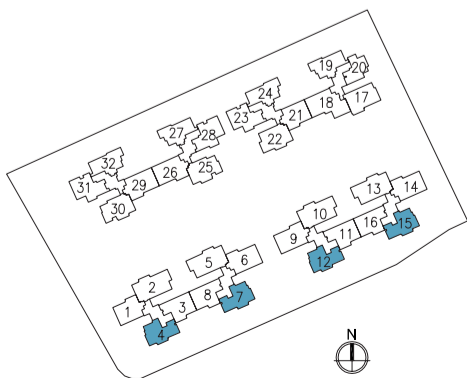
### Type B2-VT

102 sq m / 1098 sq ft  
 #02-04 To #13-04 (mirror)  
 #02-07 To #13-07  
 #02-12 To #13-12 (mirror)  
 #02-15 To #13-15



### Type B2(P)-VT

108 sq m / 1163 sq ft  
 #01-04 (mirror)  
 #01-07  
 #01-12 (mirror)  
 #01-15



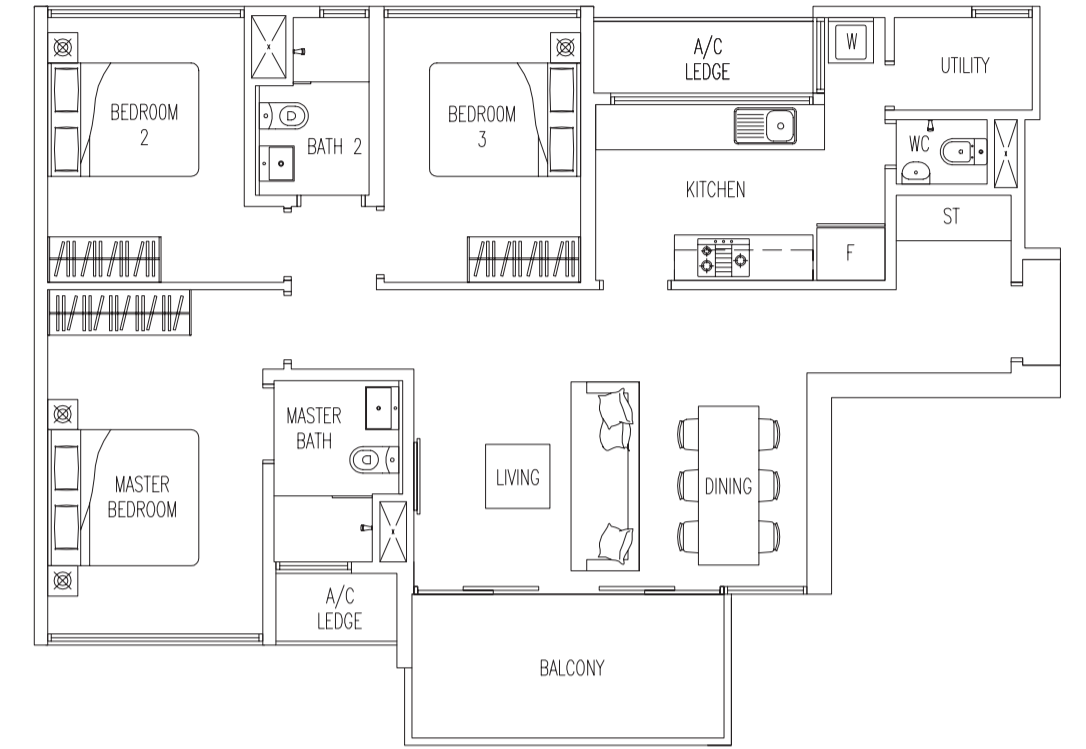
Area includes A/C ledge, balcony, PES, roof terrace. Some units are mirror images of the apartment plans shown in the brochure. Please refer to the key plans for orientation. The plans are subject to change as may be approved by the relevant authorities. All floor areas are approximate measurements only and are subject to government resurvey. Abbreviation : A/C ledge (Aircon Ledge), PES (Private Enclosed Space), and ST (Store).

# VISTAhome

## 3-Bedroom

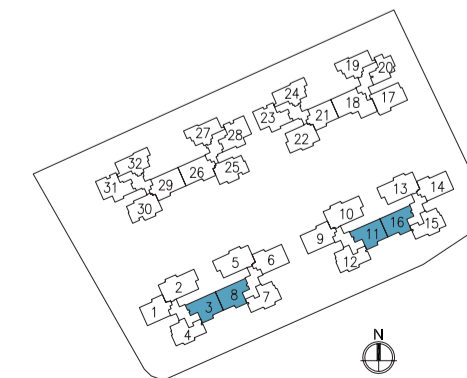
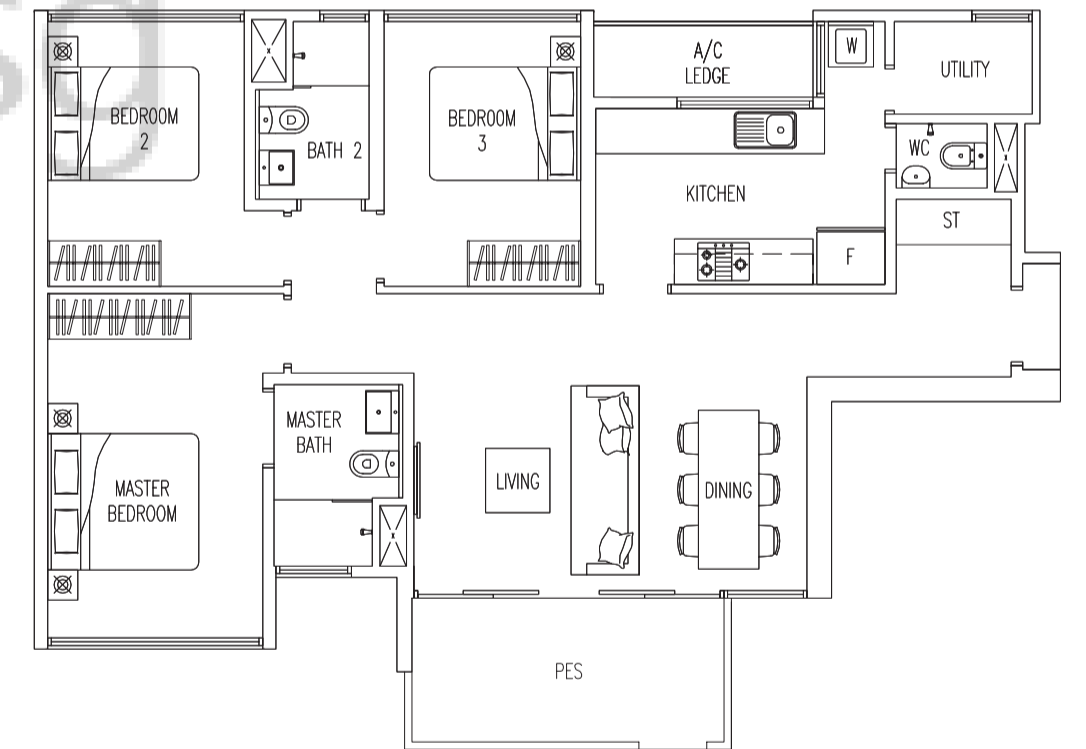
### Type B3-VT

104 sq m / 1119 sq ft  
 #02-03 To #13-03 (mirror)  
 #02-08 To #13-08  
 #02-11 To #13-11 (mirror)  
 #02-16 To #13-16



### Type B3(P)-VT

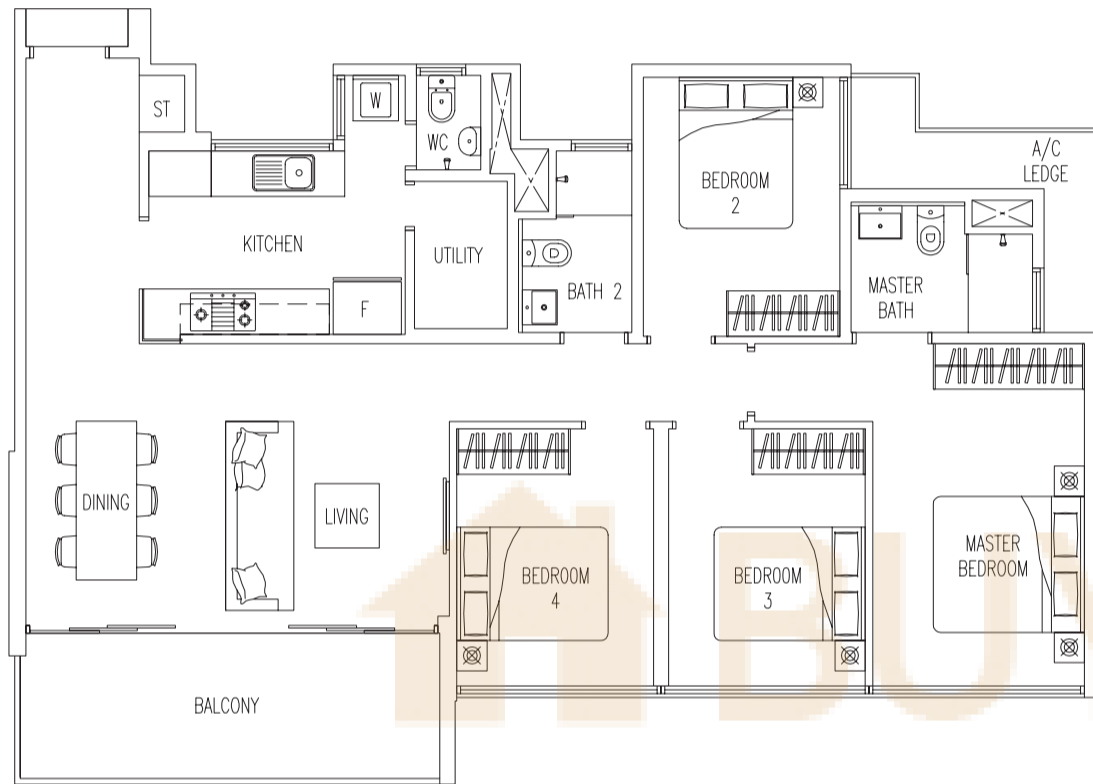
102 sq m / 1098 sq ft  
 #01-03 (mirror)  
 #01-08  
 #01-11 (mirror)  
 #01-16



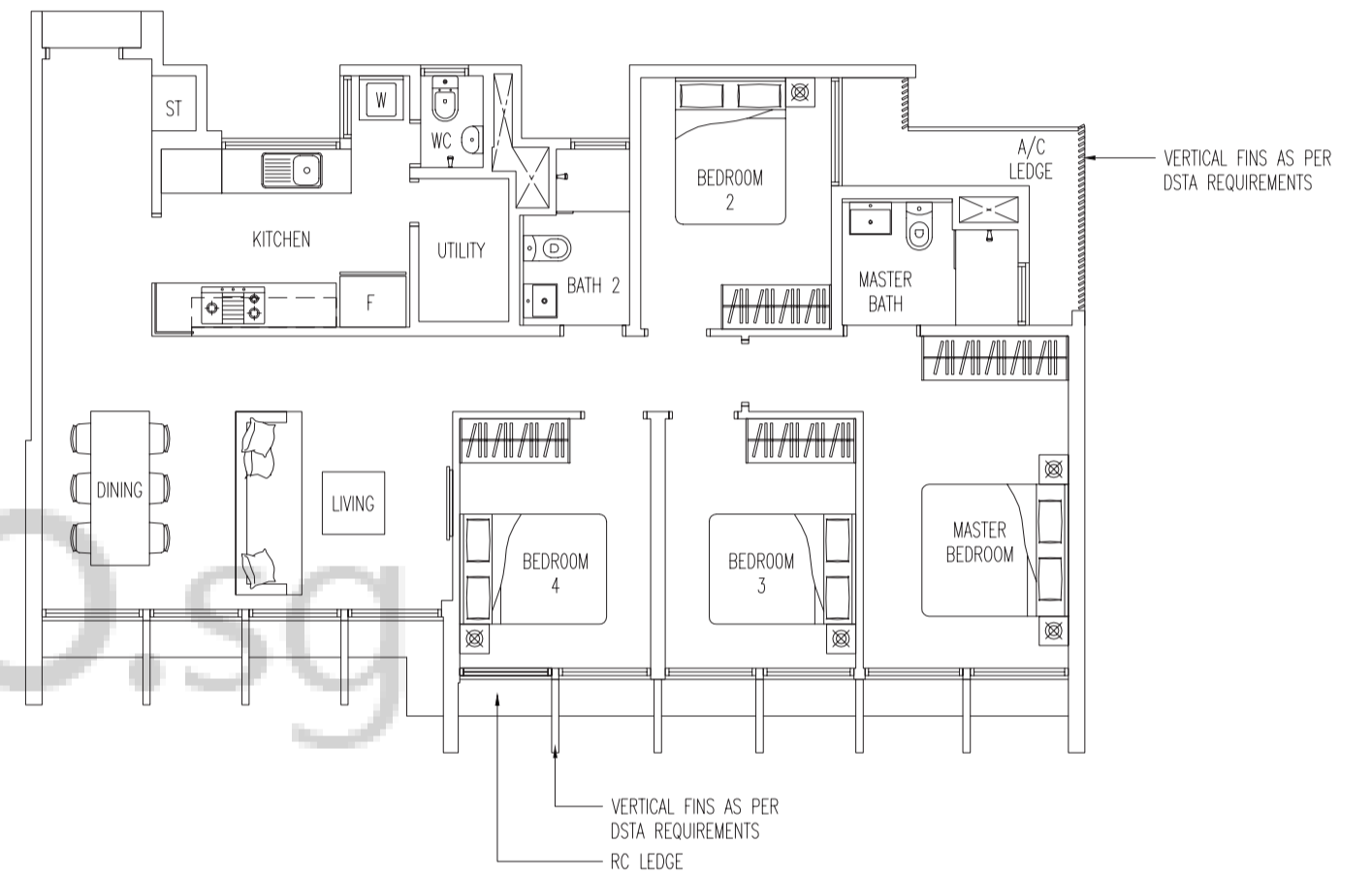
Area includes A/C ledge, balcony, PES, roof terrace. Some units are mirror images of the apartment plans shown in the brochure. Please refer to the key plans for orientation. The plans are subject to change as may be approved by the relevant authorities. All floor areas are approximate measurements only and are subject to government resurvey. Abbreviation : A/C ledge (Aircon Ledge), PES (Private Enclosed Space), and ST (Store).

BUYCONDO.SG

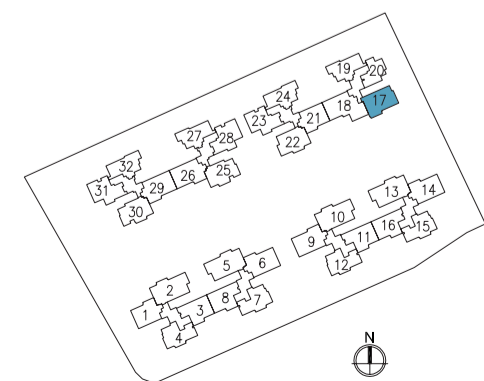
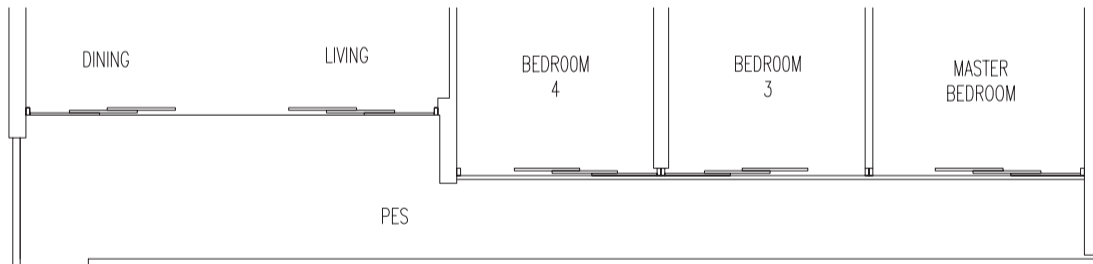
**Type C-VT**  
118 sq m / 1270 sq ft  
#03-17 To #13-17



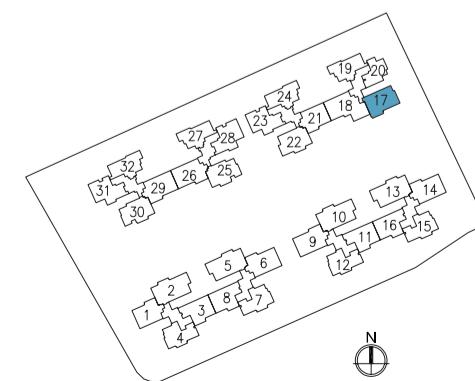
**Type C(a)-VT**  
107 sq m / 1152 sq ft  
#14-17



**Type C(P)-VT**  
128 sq m / 1378 sq ft  
#02-17



Area includes A/C ledge, balcony, PES, roof terrace. Some units are mirror images of the apartment plans shown in the brochure. Please refer to the key plans for orientation. The plans are subject to change as may be approved by the relevant authorities. All floor areas are approximate measurements only and are subject to government resurvey. Abbreviation : A/c ledge (Aircon Ledge), PES (Private Enclosed Space), and ST (Store).



Area includes A/C ledge, balcony, PES, roof terrace. Some units are mirror images of the apartment plans shown in the brochure. Please refer to the key plans for orientation. The plans are subject to change as may be approved by the relevant authorities. All floor areas are approximate measurements only and are subject to government resurvey. Abbreviation : A/c ledge (Aircon Ledge), PES (Private Enclosed Space), and ST (Store).

# VISTAhome

## 4-Bedroom

### Type C1(P)-VT

116 sq m / 1249 sq ft

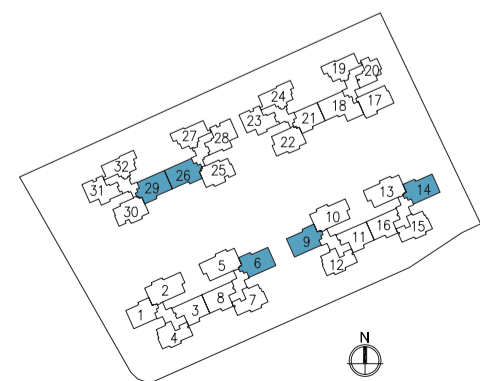
- #02-29 (mirror)
- #02-26 (rotated)
- #02-06
- #02-09 (mirror)
- #02-14



### Type C1-VT

112 sq m / 1206 sq ft

- #03-29 To #13-29 (mirror)
- #03-26 To #13-26 (rotated)
- #03-06 To #13-06
- #03-09 To #13-09 (mirror)
- #03-14 To #13-14
- #14-26 - Open Balcony (rotated)



Area includes A/C ledge, balcony, PES, roof terrace. Some units are mirror images of the apartment plans shown in the brochure. Please refer to the key plans for orientation. The plans are subject to change as may be approved by the relevant authorities. All floor areas are approximate measurements only and are subject to government resurvey. Abbreviation : A/c ledge (Aircon Ledge), PES (Private Enclosed Space), and ST (Store).

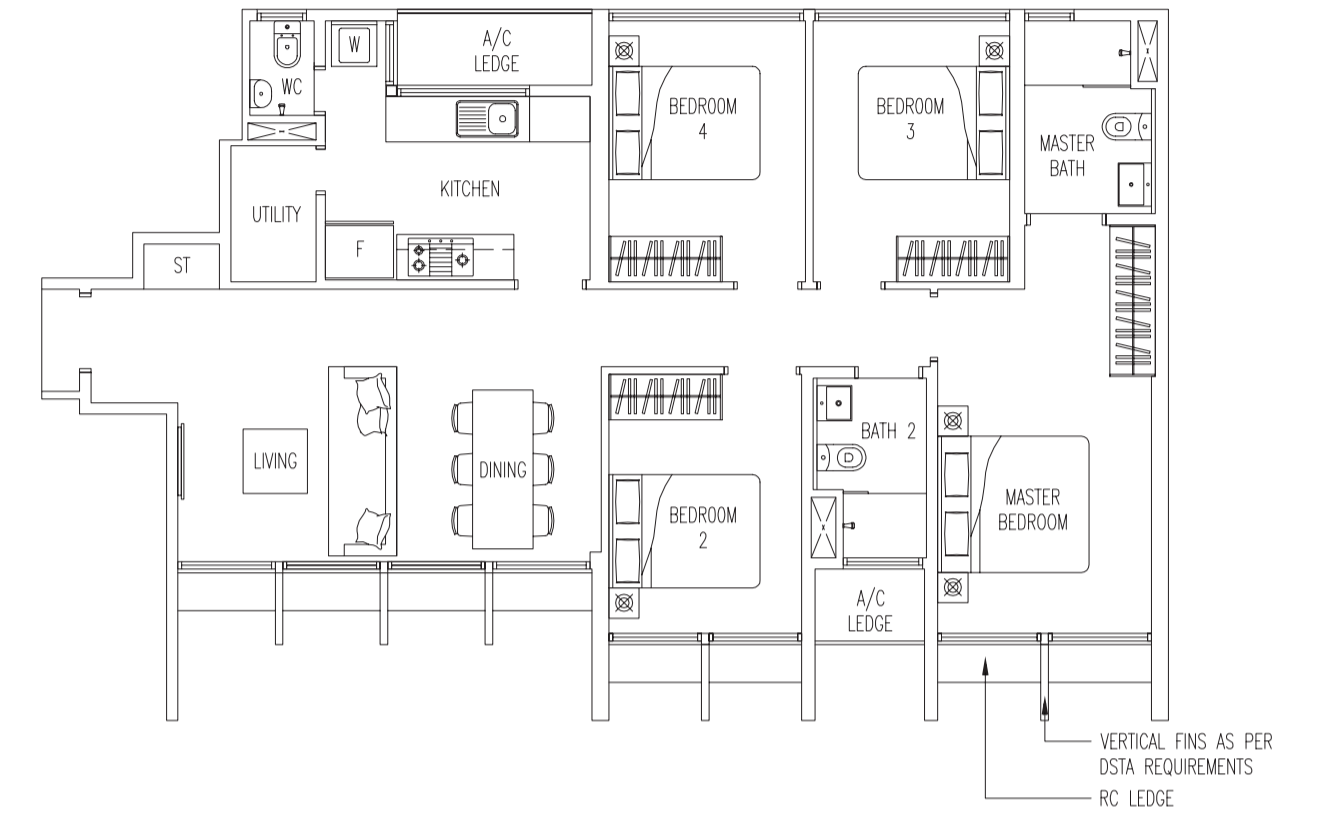
# VISTAhome

## 4-Bedroom

### Type C1(a)-VT

103 sq m / 1109 sq ft

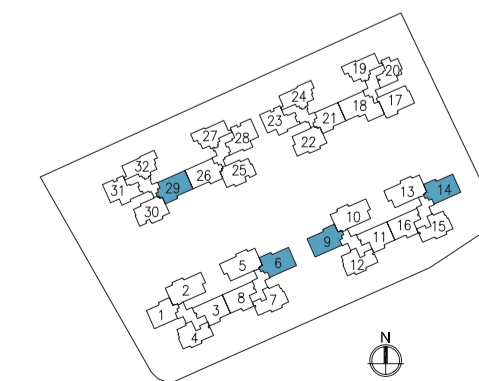
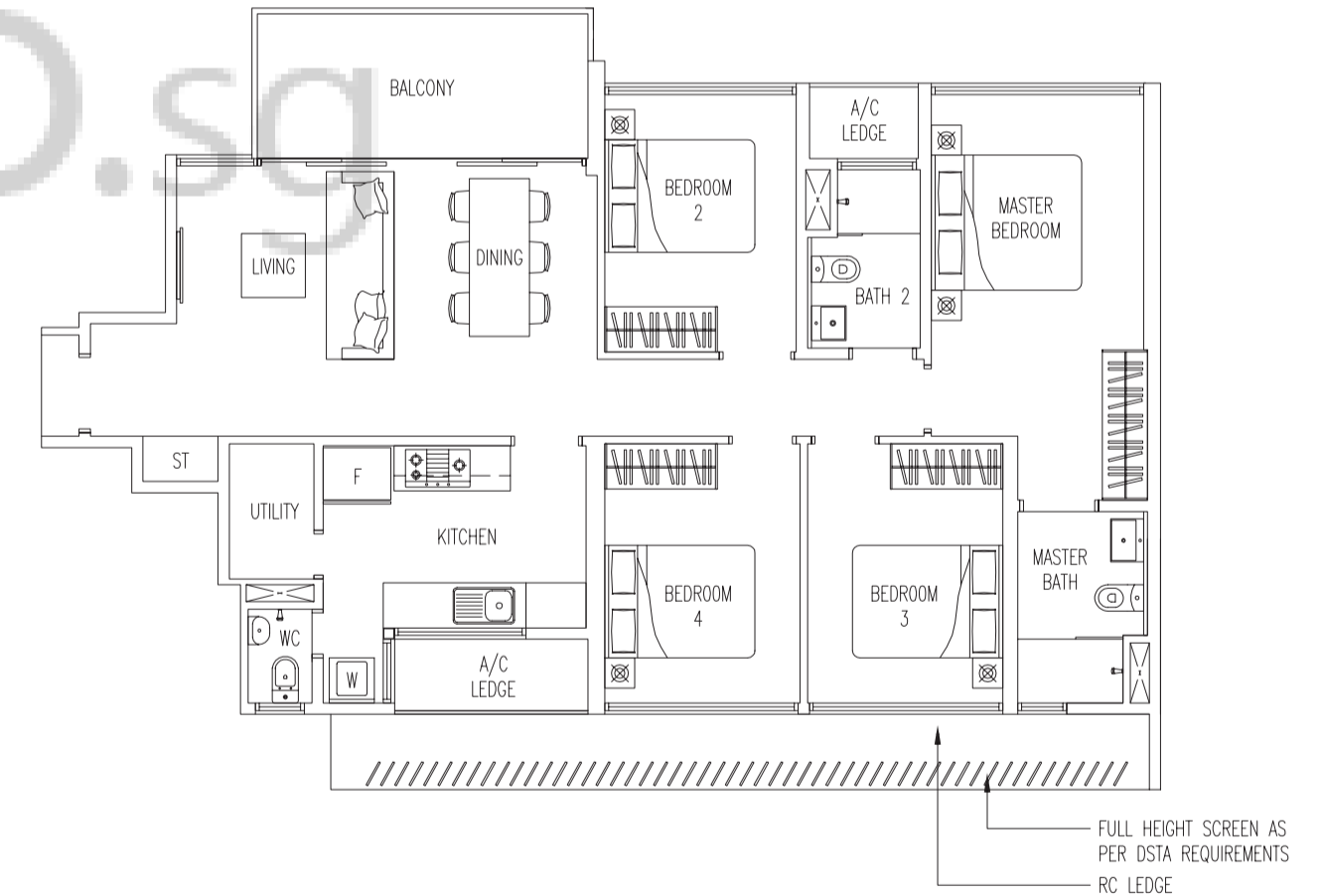
#14-29



### Type C1(b)-VT

112 sq m / 1206 sq ft

- #14-06 - Open Balcony
- #14-09 - Open Balcony (mirror)
- #14-14 - Open Balcony



Area includes A/C ledge, balcony, PES, roof terrace. Some units are mirror images of the apartment plans shown in the brochure. Please refer to the key plans for orientation. The plans are subject to change as may be approved by the relevant authorities. All floor areas are approximate measurements only and are subject to government resurvey. Abbreviation : A/c ledge (Aircon Ledge), PES (Private Enclosed Space), and ST (Store).

# VANTAGEhome

## 3-Bedroom



### Type B4-VG

107 sq m / 1152 sq ft

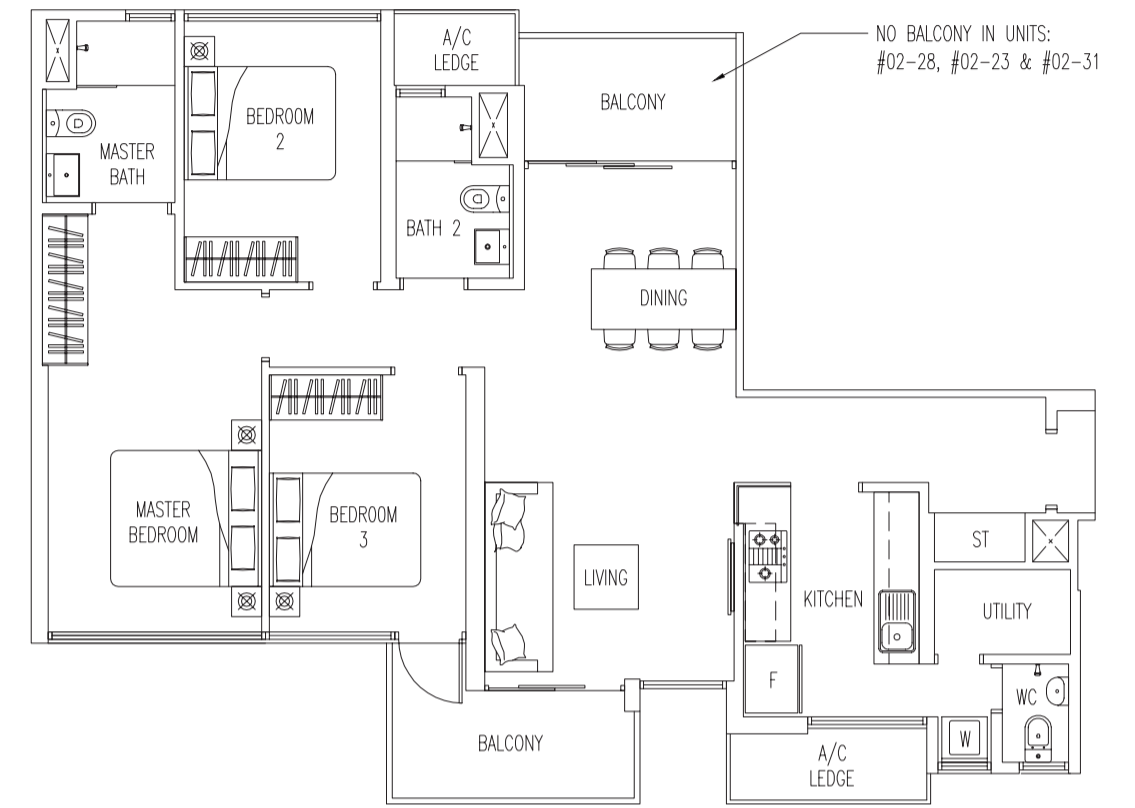
#03-28 To #13-28 (mirror)

#03-23 To #13-23

#03-31 To #13-31

#14-28 - Open Balcony (mirror)

#14-23 - Open Balcony



NO BALCONY IN UNITS:  
#02-28, #02-23 & #02-31

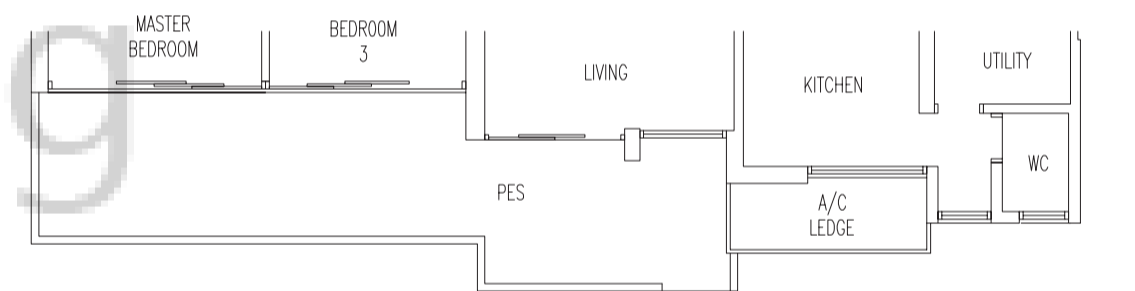
### Type B4(P)-VG

115 sq m / 1238 sq ft

#02-28 (mirror)

#02-23

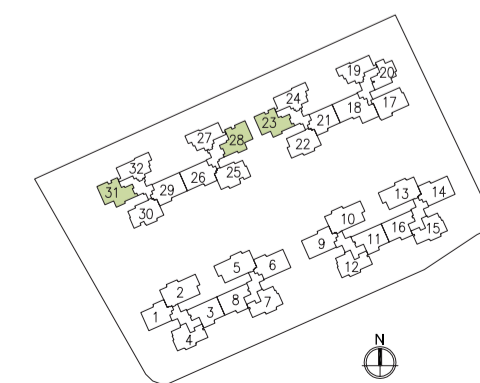
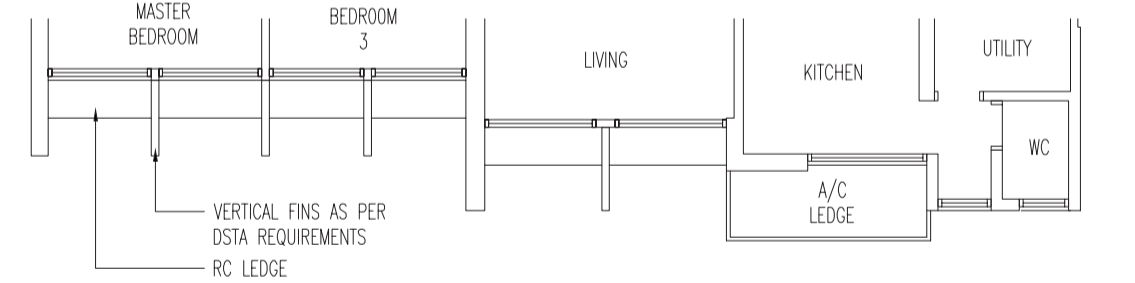
#02-31



### Type B4(a)-VG

102 sq m / 1098 sq ft

#14-31



0 1 3 5 M

Area includes A/C ledge, balcony, PES, roof terrace. Some units are mirror images of the apartment plans shown in the brochure. Please refer to the key plans for orientation. The plans are subject to change as may be approved by the relevant authorities. All floor areas are approximate measurements only and are subject to government resurvey. Abbreviation : A/C ledge (Aircon Ledge), PES (Private Enclosed Space), and ST (Store).





### Type B-TR

111 sq m / 1195 sq ft

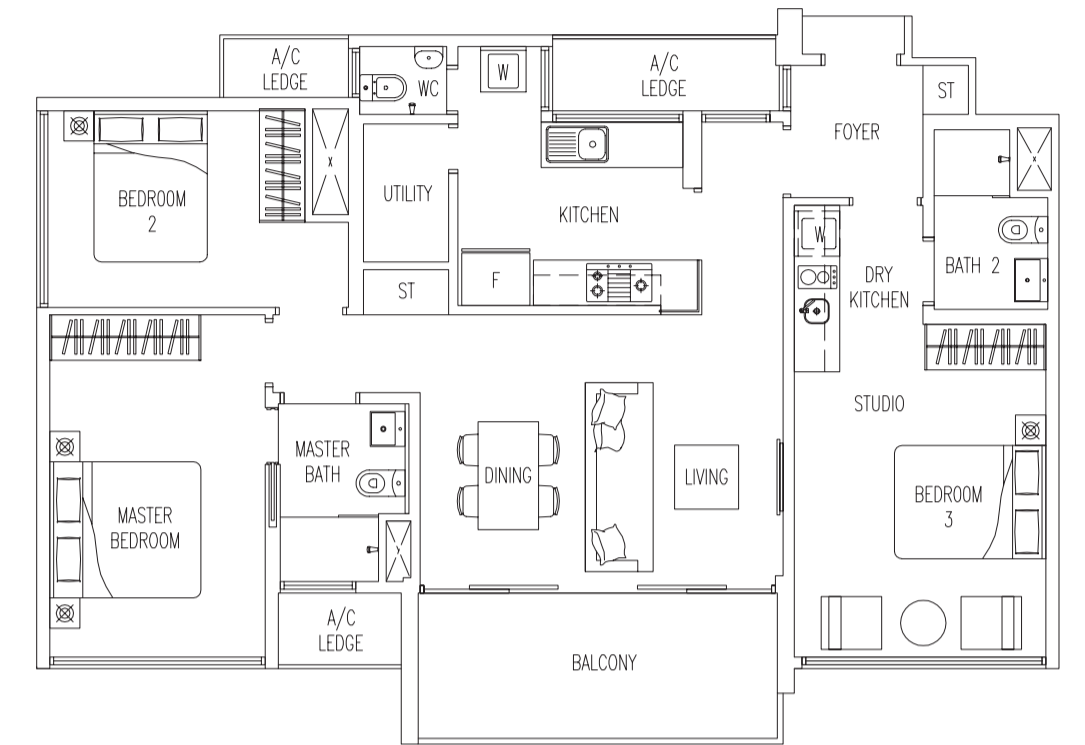
#03-30 To #13-30

#03-25 To #13-25 (mirror)

#03-22 To #13-22

#14-22 - Open Balcony

#14-25 - Open Balcony (mirror)

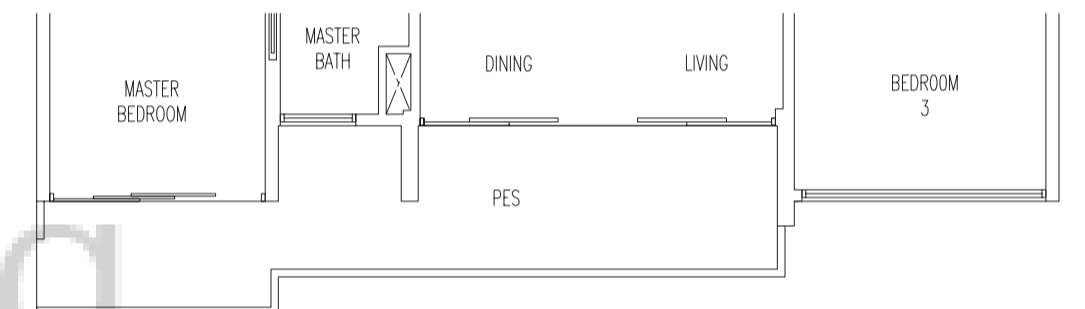


### Type B(P)-TR

118 sq m / 1270 sq ft

#02-25 (mirror)

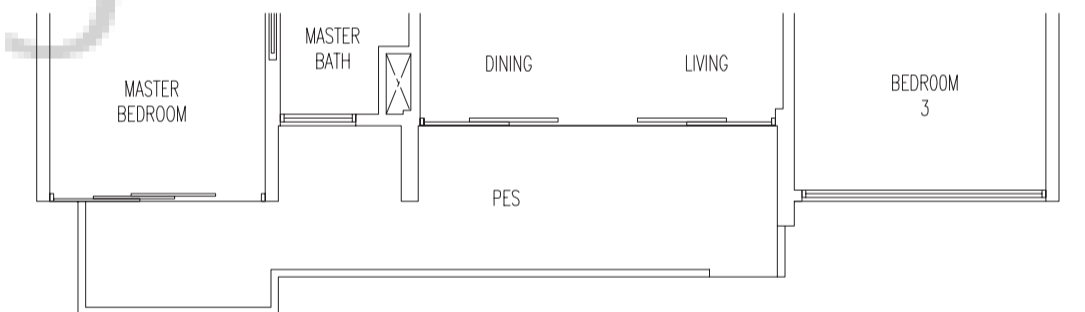
#02-22



### Type B(P1)-TR

117 sq m / 1259 sq ft

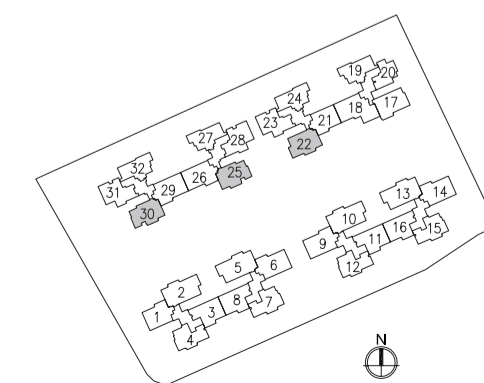
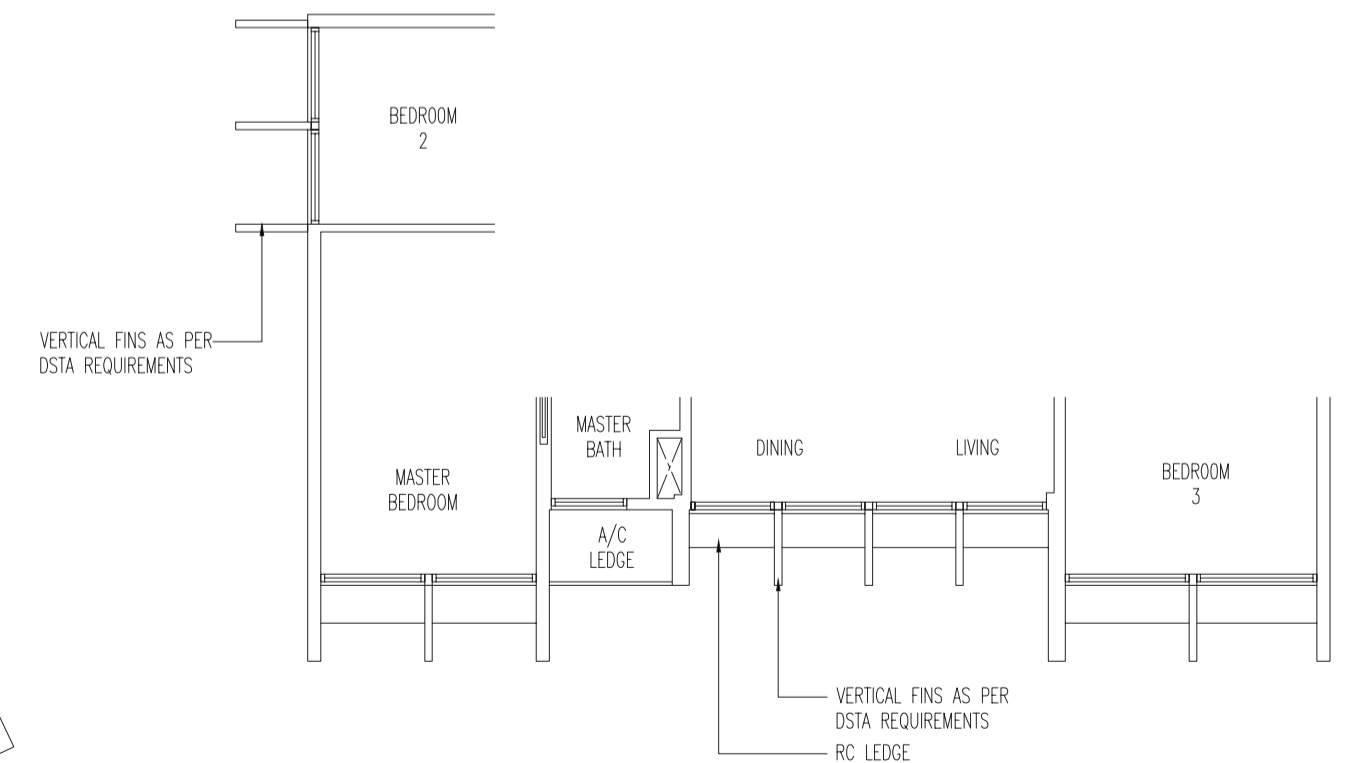
#02-30



### Type B(a)-TR

102 sq m / 1098 sq ft

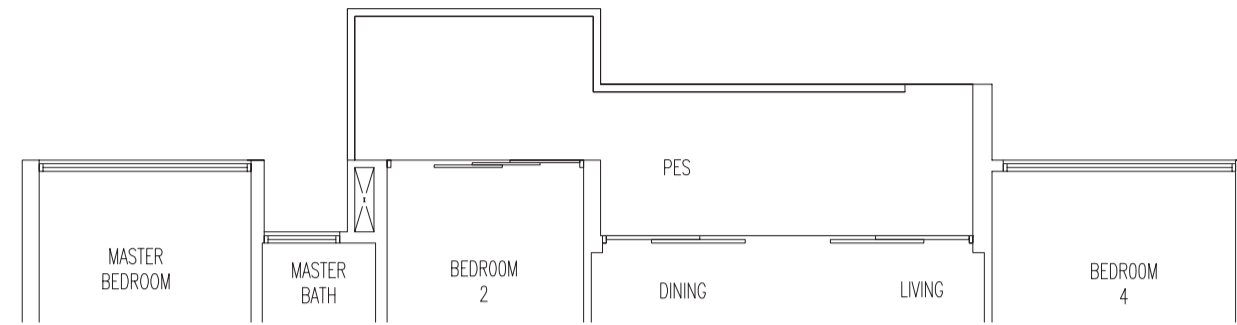
#14-30



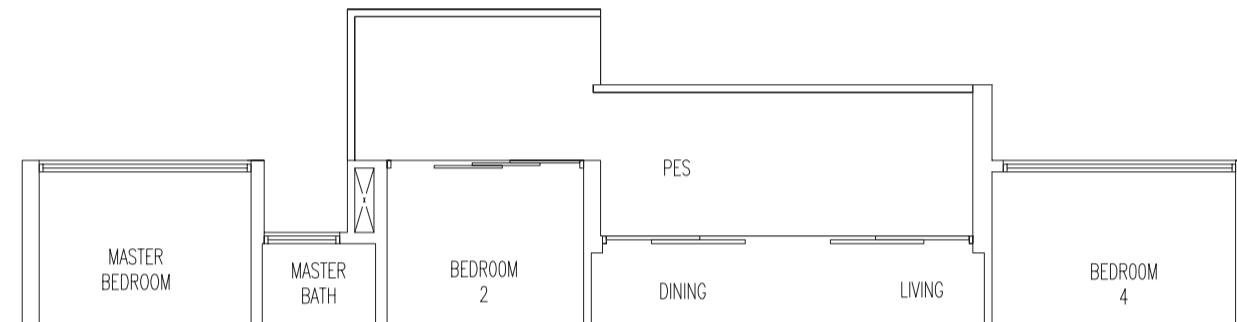
Area includes A/C ledge, balcony, PES, roof terrace. Some units are mirror images of the apartment plans shown in the brochure. Please refer to the key plans for orientation. The plans are subject to change as may be approved by the relevant authorities. All floor areas are approximate measurements only and are subject to government resurvey. Abbreviation : A/C ledge (Aircon Ledge), PES (Private Enclosed Space), and ST (Store).



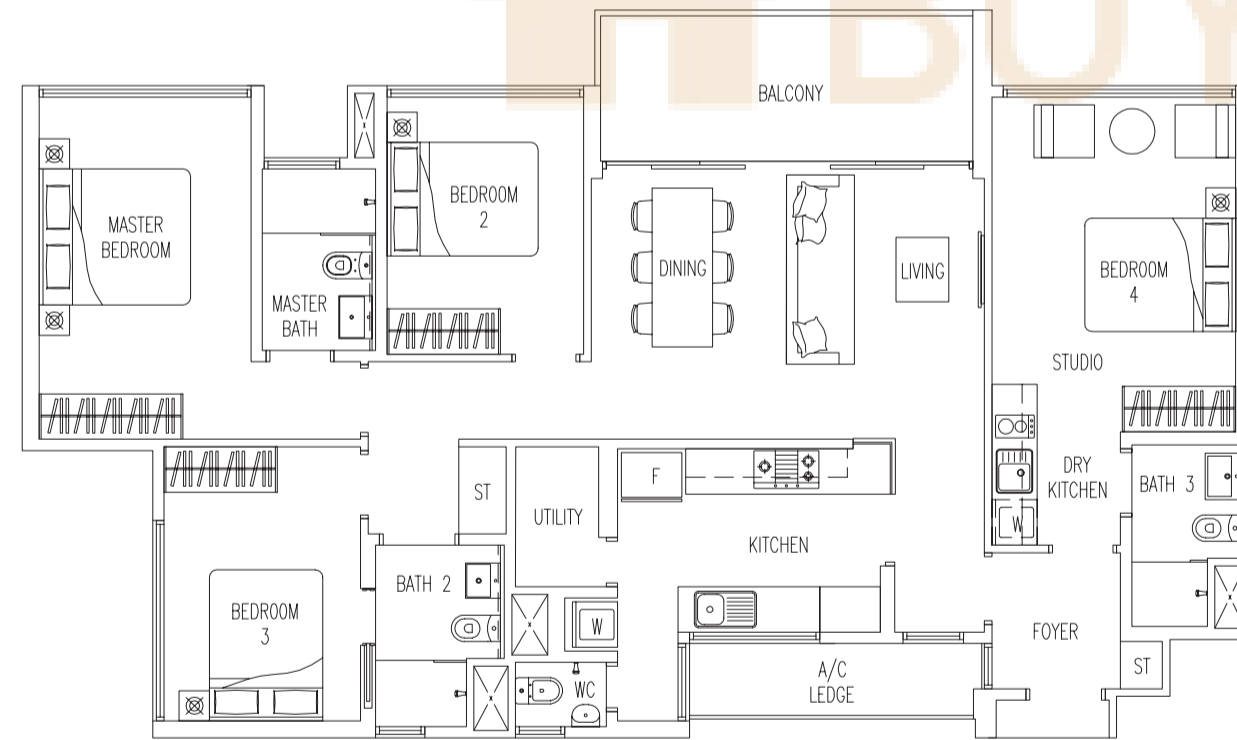
**Type C(P)-TR**  
 137 sq m / 1475 sq ft  
 #02-05  
 #02-10 (mirror)  
 #02-13



**Type C(P1)-TR**  
 137 sq m / 1475 sq ft  
 #02-02 (mirror)



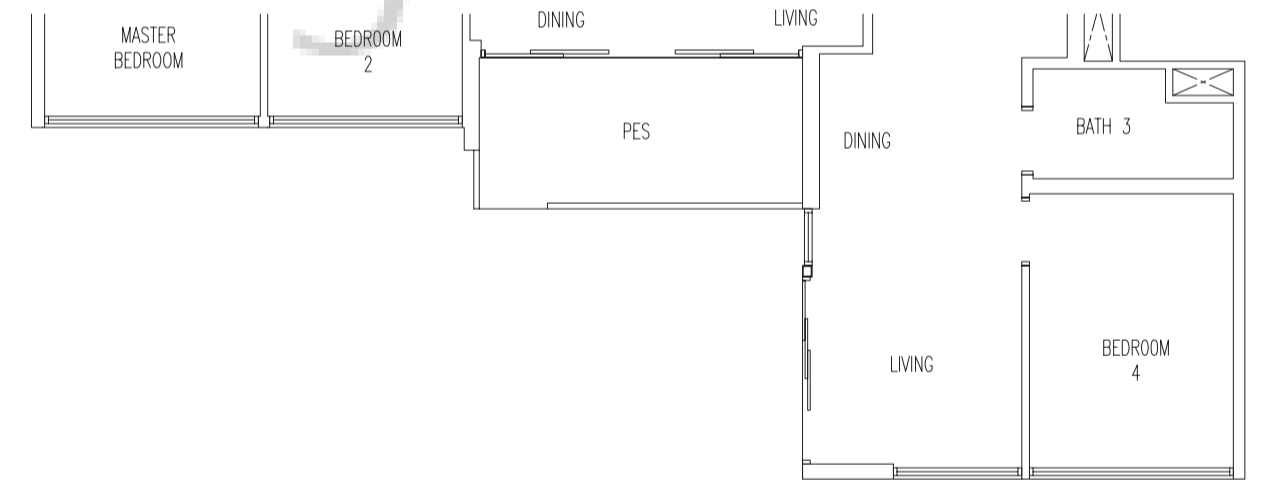
**Type C-TR**  
 130 sq m / 1399 sq ft  
 #03-02 To #13-02 (mirror)  
 #03-05 To #13-05  
 #03-10 To #13-10 (mirror)  
 #03-13 To #13-13  
 #14-02 - Open Balcony (mirror)  
 #14-05 - Open Balcony  
 #14-10 - Open Balcony (mirror)  
 #14-13 - Open Balcony



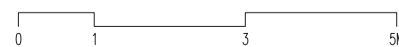
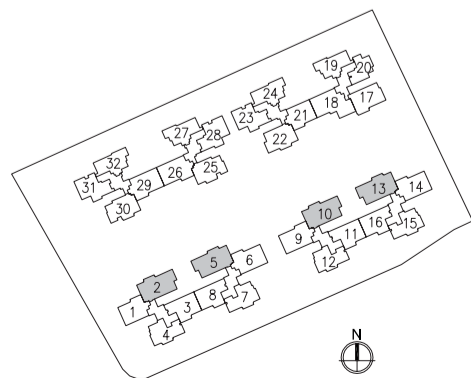
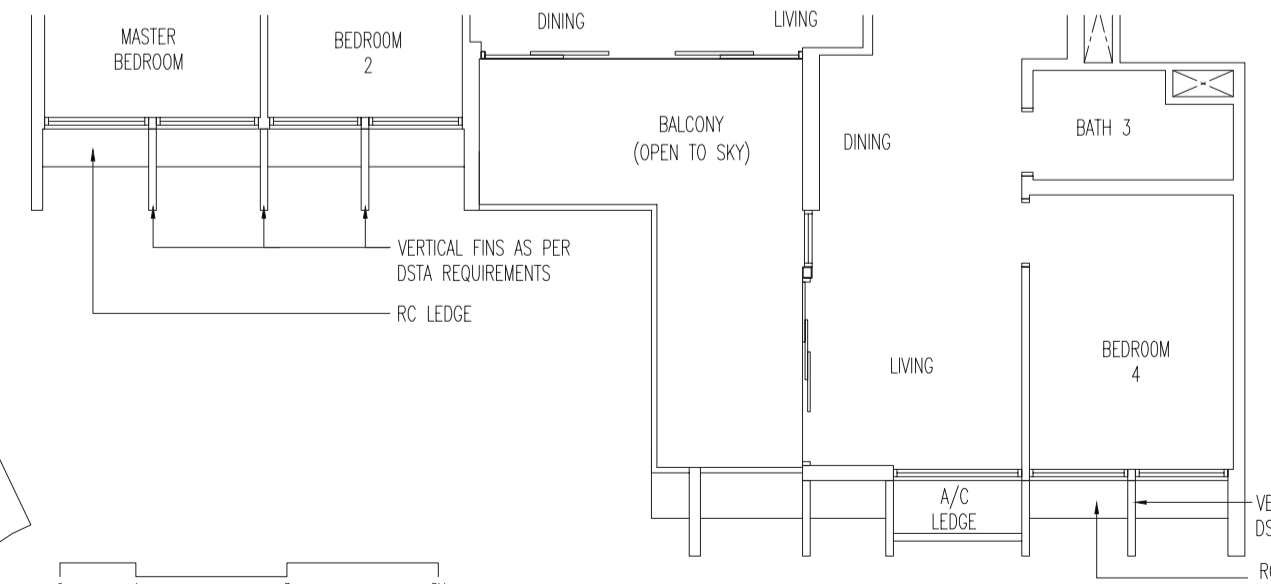
**Type C-TRD**  
 148 sq m / 1593 sq ft  
 #03-18 To #13-18



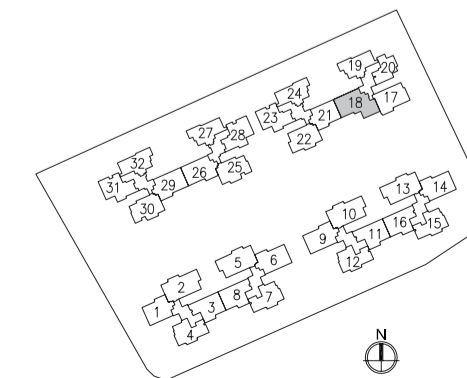
**Type C(P)-TRD**  
 139 sq m / 1496 sq ft  
 #02-18



**Type C(a)-TRD**  
 148 sq m / 1593 sq ft  
 #14-18 - Open Balcony



Area includes A/C ledge, balcony, PES, roof terrace. Some units are mirror images of the apartment plans shown in the brochure. Please refer to the key plans for orientation. The plans are subject to change as may be approved by the relevant authorities. All floor areas are approximate measurements only and are subject to government resurvey. Abbreviation : A/C ledge (Aircon Ledge), PES (Private Enclosed Space), and ST (Store).



Area includes A/C ledge, balcony, PES, roof terrace. Some units are mirror images of the apartment plans shown in the brochure. Please refer to the key plans for orientation. The plans are subject to change as may be approved by the relevant authorities. All floor areas are approximate measurements only and are subject to government resurvey. Abbreviation : A/C ledge (Aircon Ledge), PES (Private Enclosed Space), and ST (Store).

BUY CONDO.SG

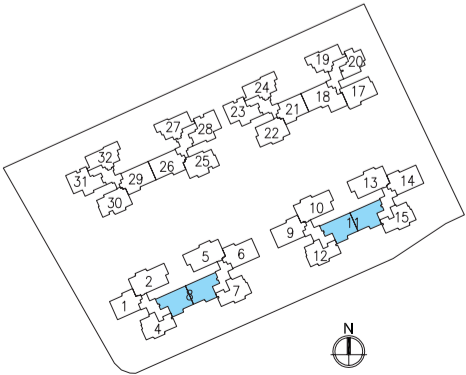
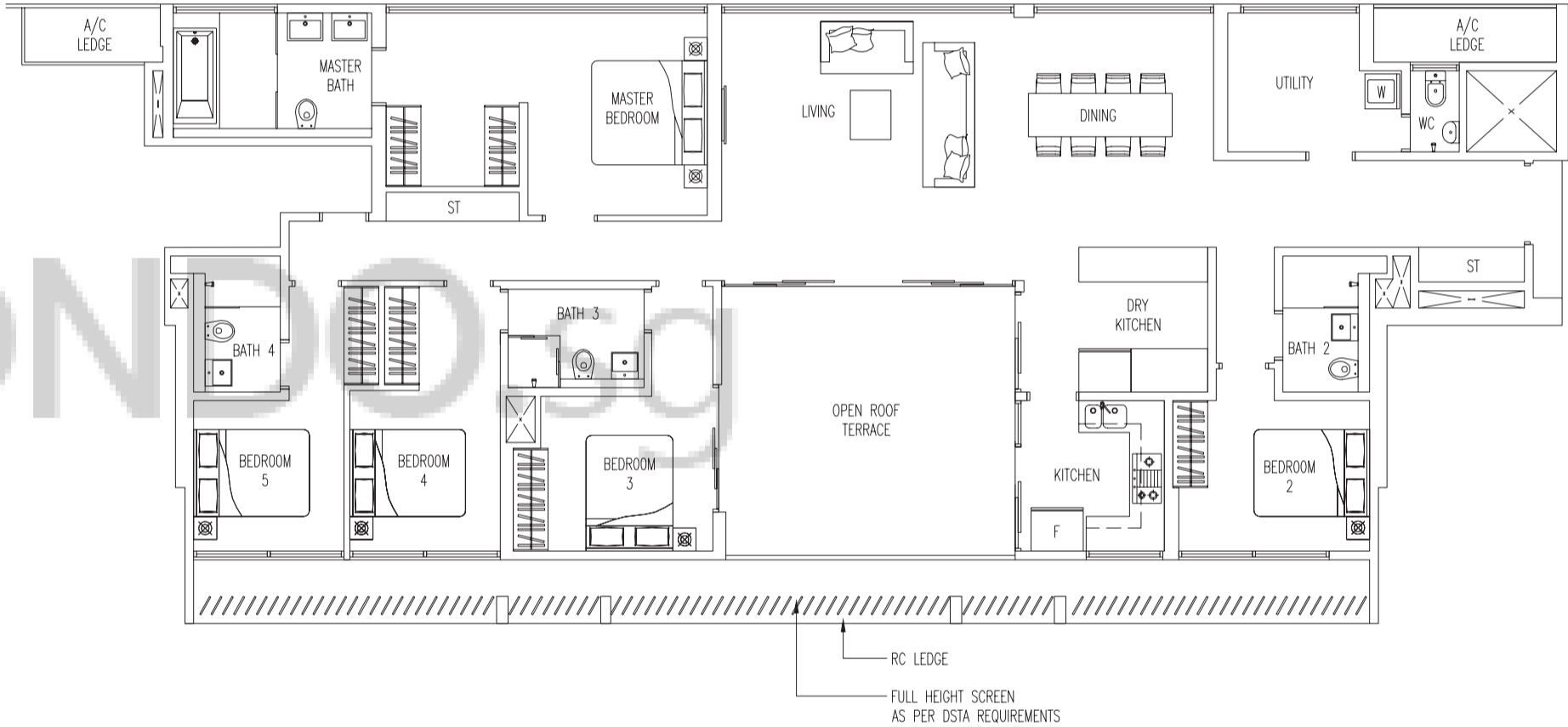
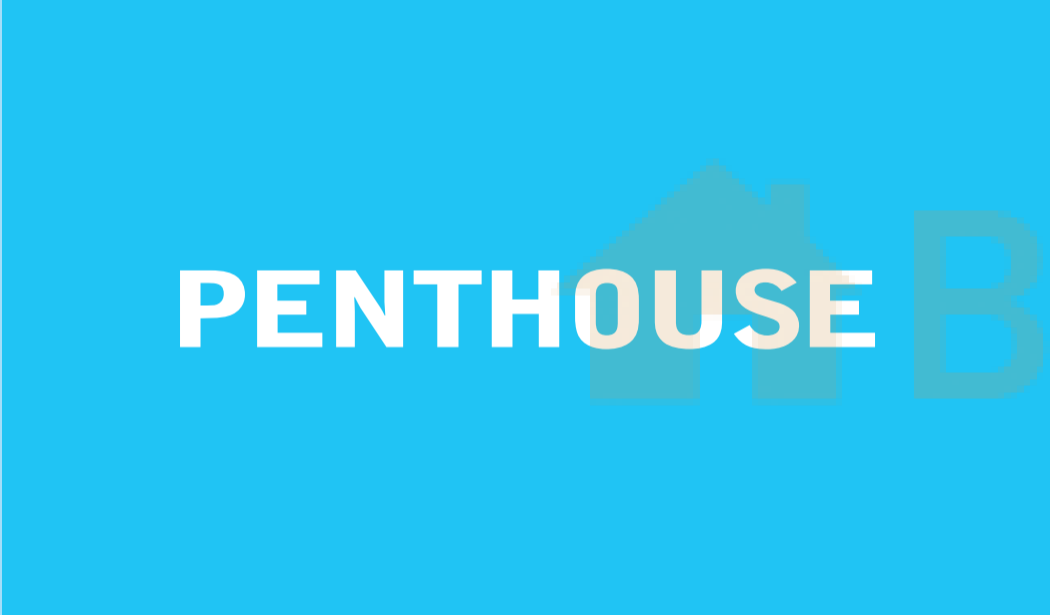
# PENTHOUSE

## Type PH

205 sq m / 2207 sq ft

#14-08

#14-11 (mirror)



Area includes A/C ledge, balcony, PES, roof terrace. Some units are mirror images of the apartment plans shown in the brochure. Please refer to the key plans for orientation. The plans are subject to change as may be approved by the relevant authorities. All floor areas are approximate measurements only and are subject to government resurvey. Abbreviation : A/C ledge (Aircon Ledge), PES (Private Enclosed Space), and ST (Store).