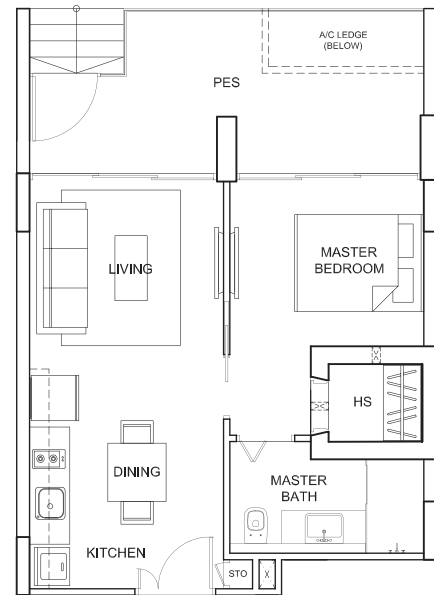


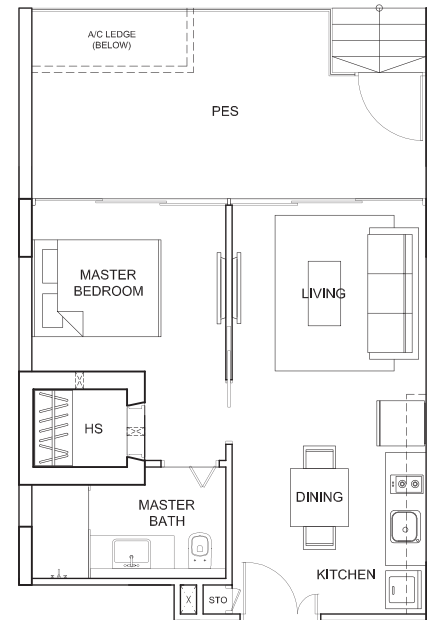
I-BEDROOM

TYPE A1-P



55 sq m/592 sq ft
(including PES 14 sq m/151 sq ft)
#01-15

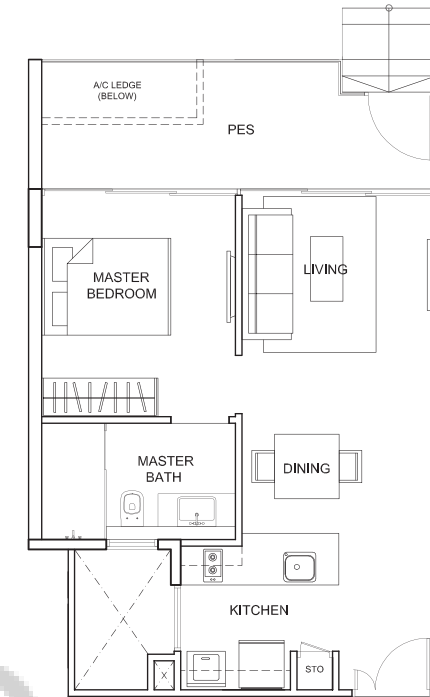
TYPE A2-P



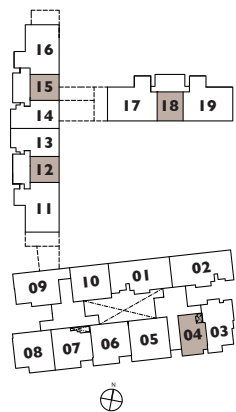
55 sq m/592 sq ft
(including PES 14 sq m/151 sq ft)
#01-12

58 sq m/624 sq ft
(including PES 17 sq m/183 sq ft)
#01-18 (mirror)

TYPE A3-P

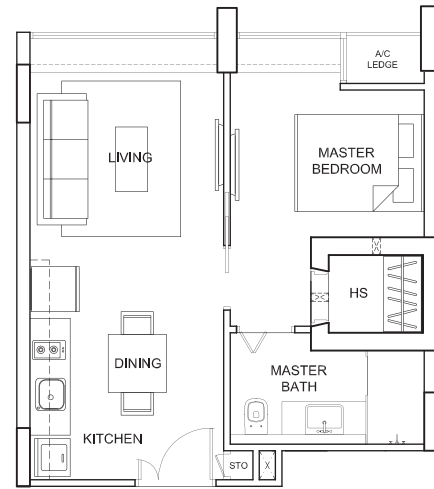


58 sq m/624 sq ft
(including PES 12 sq m/129 sq ft)
#01-04



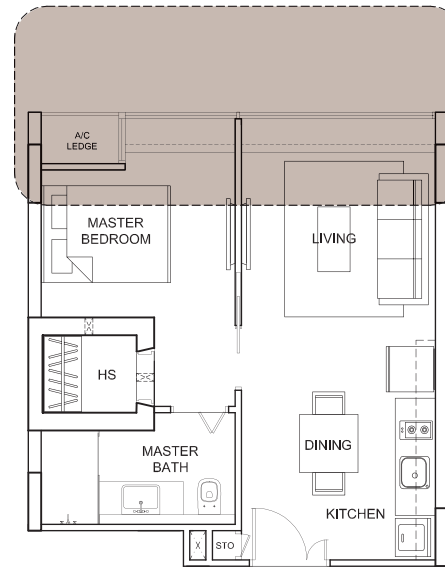
Plans are not to scale and are subject to any amendment as may be approved by the relevant authorities. All floor areas are approximate and are subject to final survey.

TYPE A1



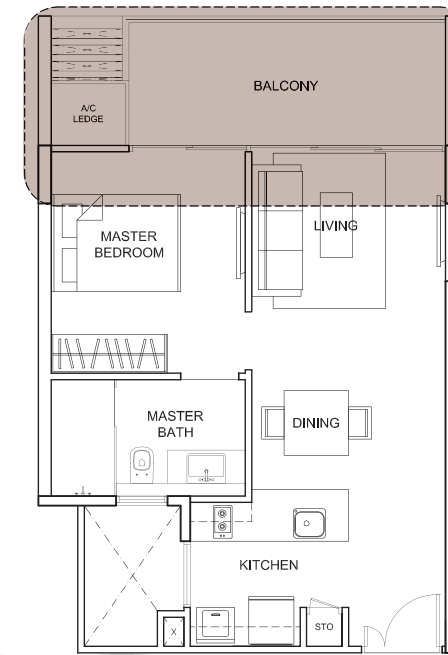
42sq m/452 sq ft
#02-15

TYPE A2

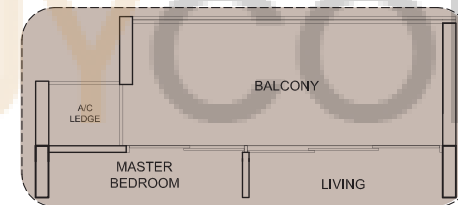


42 sq m/452 sq ft
#02-12
#02-18 (mirror)

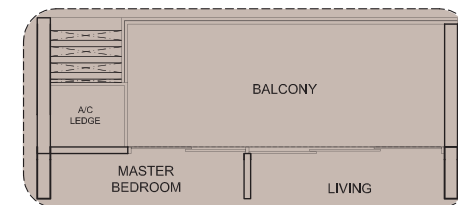
TYPE A3



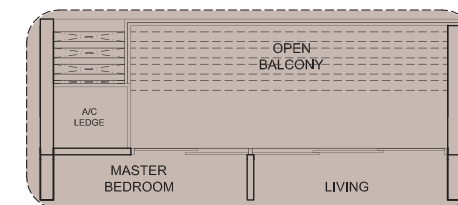
BUYWOODO.SG



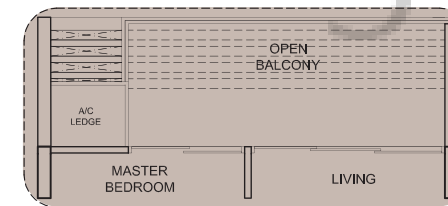
50 sq m/538 sq ft
#03-18 (mirror)



50 sq m/538 sq ft
#03-12, #04-12
#04-18 (mirror)

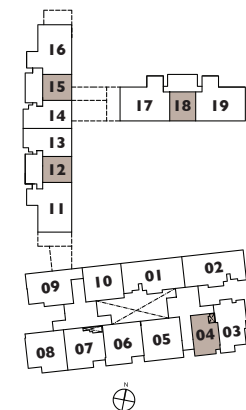


50 sq m/538 sq ft
*#05-12
*#05-18 (mirror)
*(High ceiling at Master Bedroom)



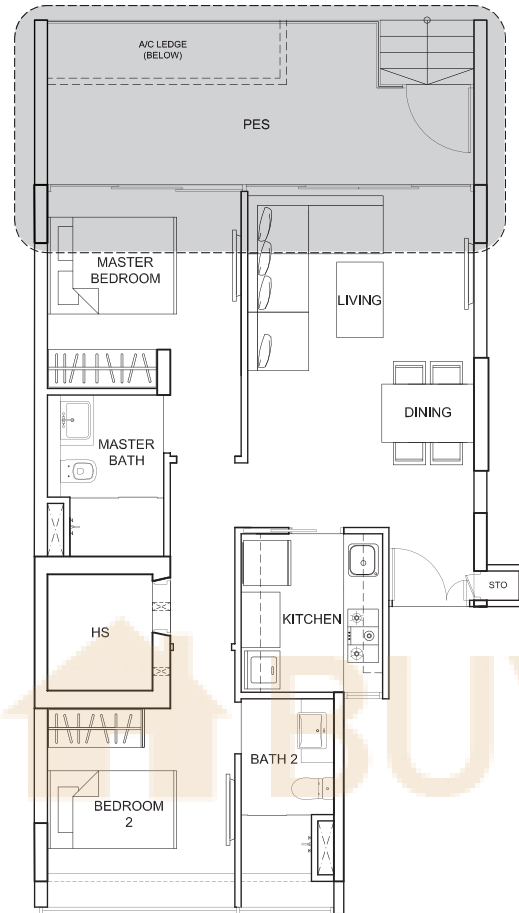
55 sq m / 592 sq ft
*#05-04
*(High ceiling at Master Bedroom)

I-BEDROOM

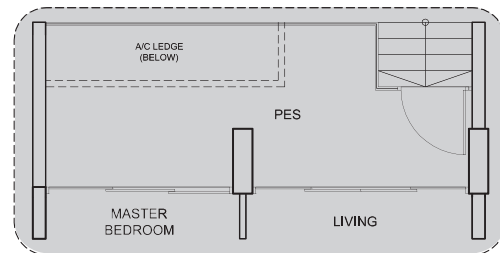


2-BEDROOM

TYPE B1-P

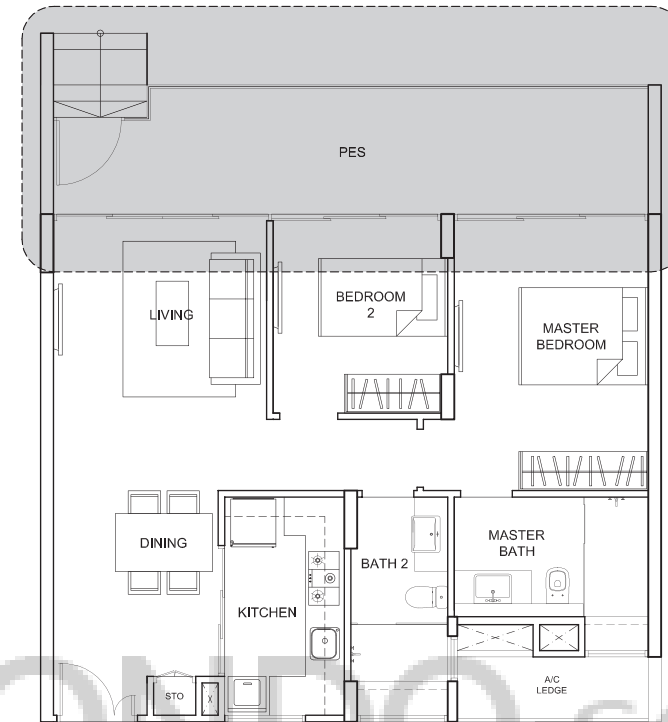


84 sq m/904 sq ft
(including PES 15 sq m/161 sq ft)
#01-13

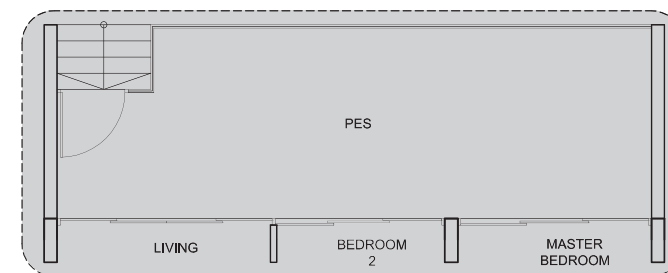


84 sq m/904 sq ft
(including PES 15 sq m/161 sq ft)
#01-14 (mirror)

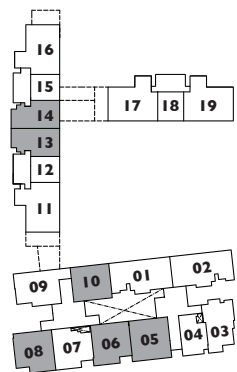
TYPE B2-P



92 sq m/990 sq ft
(including PES 21 sq m/226 sq ft)
#01-05, #01-08
#01-06 (mirror)



100 sq m/1,076 sq ft
(including PES 29 sq m/312 sq ft)
#01-10



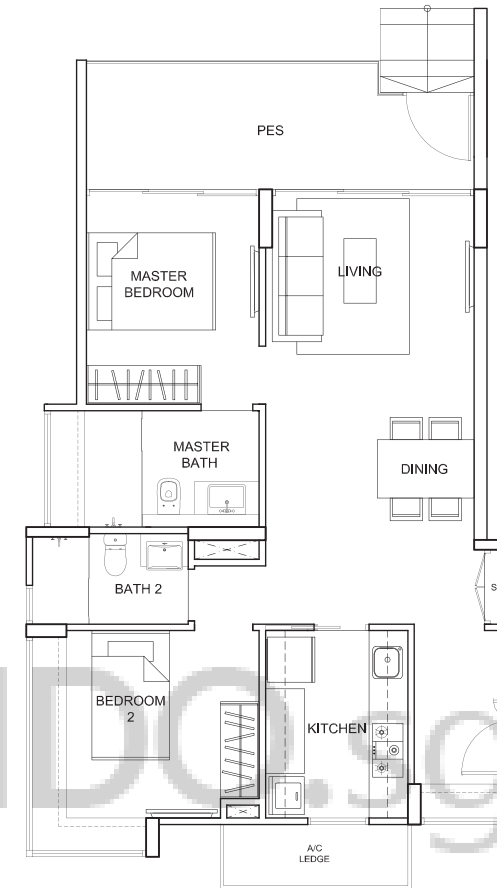
Plans are not to scale and are subject to any amendment as may be approved by the relevant authorities. All floor areas are approximate and are subject to final survey.

TYPE B3-P



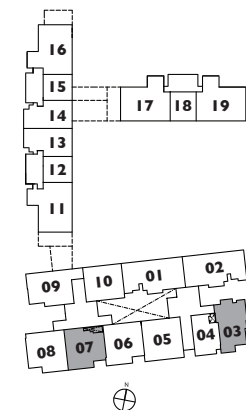
87 sq/936 sq ft
(including PES 18 sq m/194 sq ft)
#01-07

TYPE B4-P



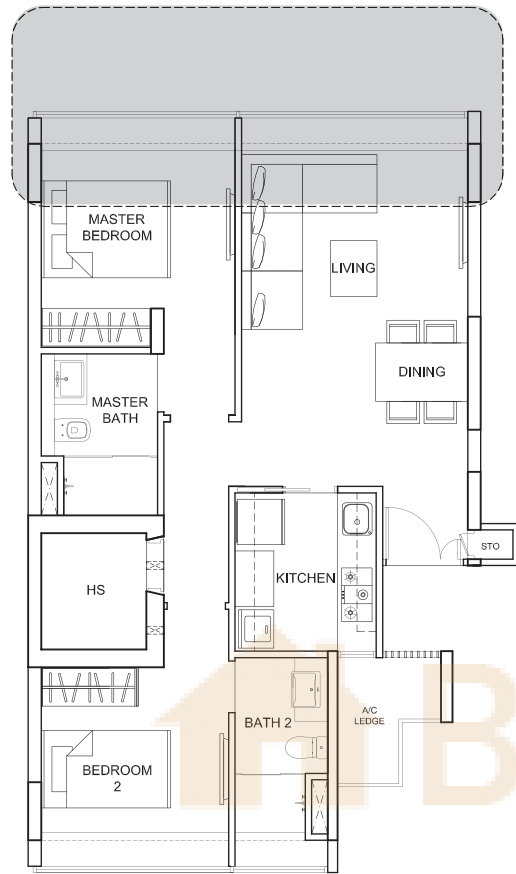
84 sq m/904 sq ft
(including PES 14 sq m/151 sq ft)
#01-03

2-BEDROOM

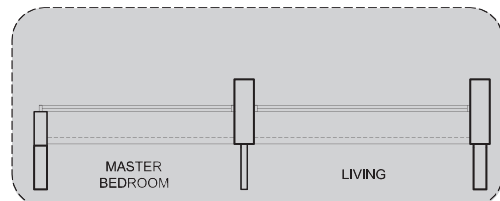


2-BEDROOM

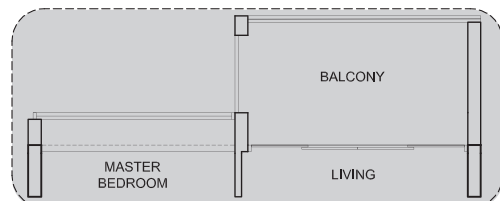
TYPE B1



72 sq m/775 sq ft
#02-13



72 sq m/775 sq ft
#02-14 (mirror)

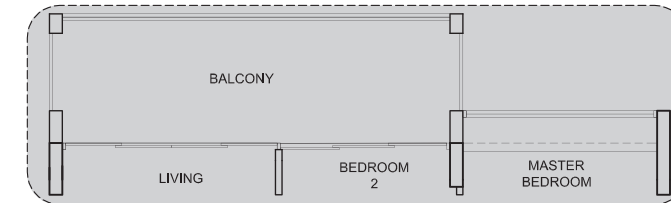


78 sq m / 840 sq ft
#03-13, #04-13

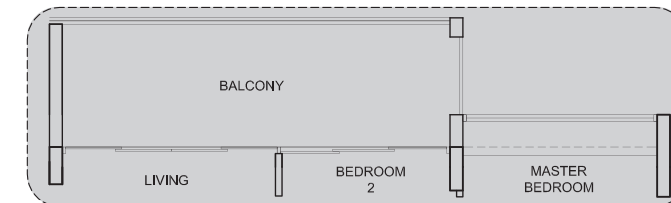
TYPE B2



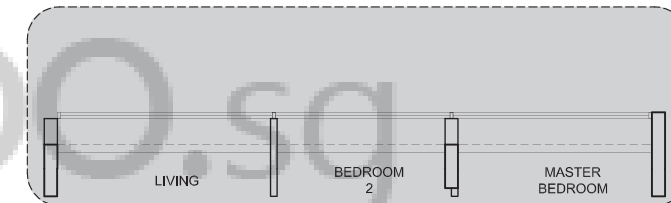
91 sq m/980 sq ft
#02-05, #03-05, #04-05



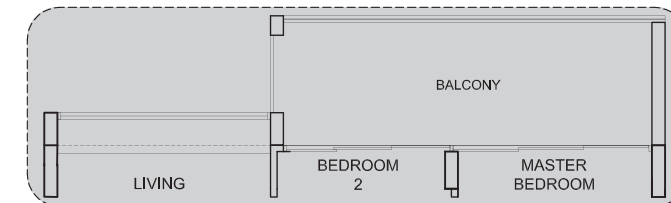
86 sq m/926 sq ft
#02-06, #03-06, #04-06 (mirror)



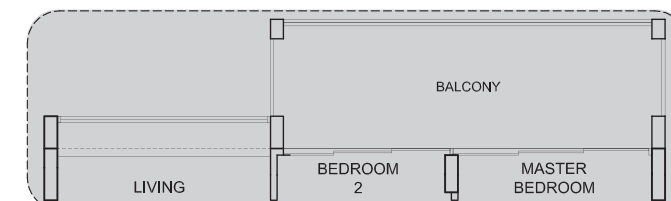
86 sq m/926 sq ft
#02-08, #03-08, #04-08



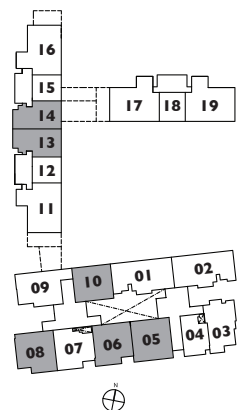
77 sq m/829 sq ft
#02-10



85 sq m/915 sq ft
#03-10

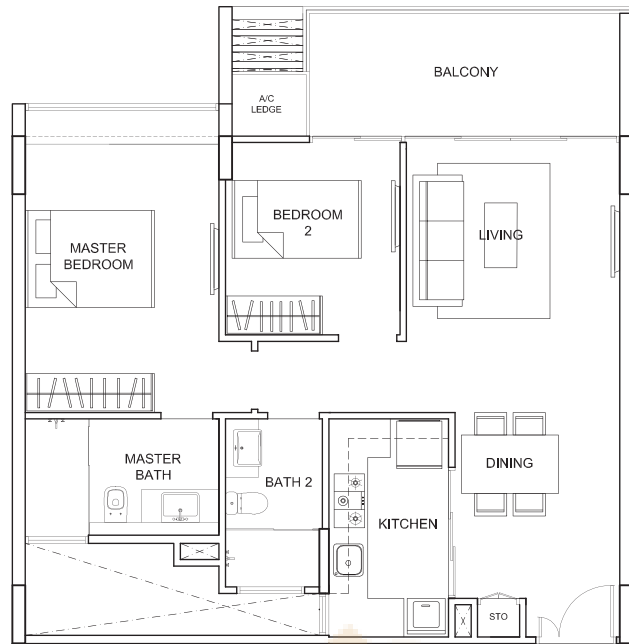


85 sq m/915 sq ft
#04-10



Plans are not to scale and are subject to any amendment as may be approved by the relevant authorities. All floor areas are approximate and are subject to final survey.

TYPE B3



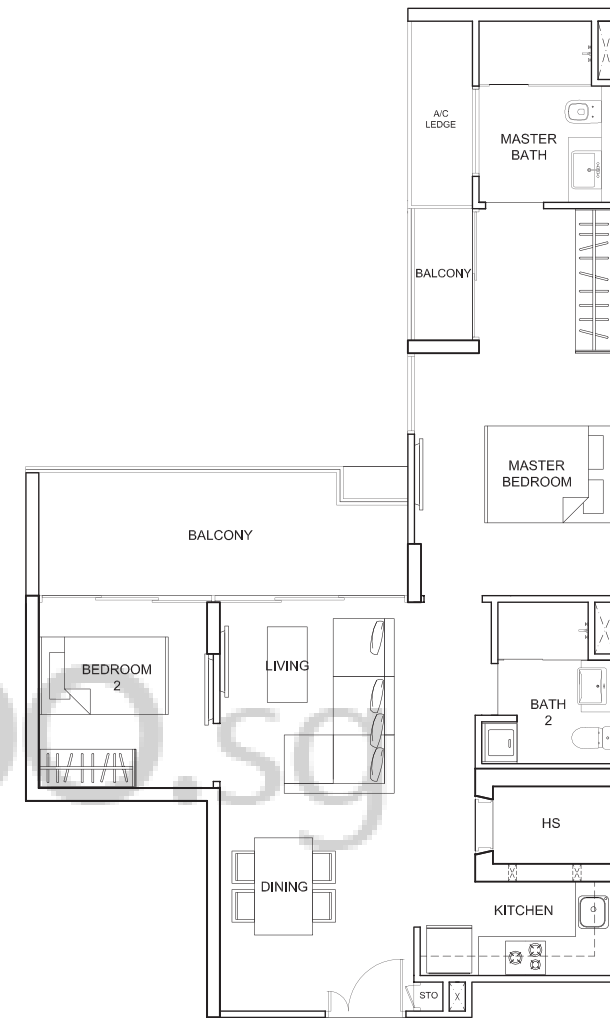
79 sq m/850 sq ft
#02-07, #03-07, #04-07

TYPE B4



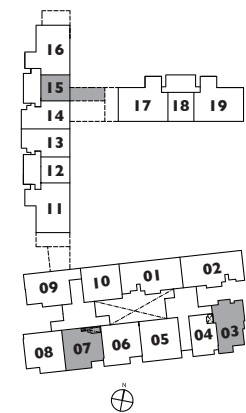
79 sq m/850 sq ft
#02-03, #03-03, #04-03

TYPE B5



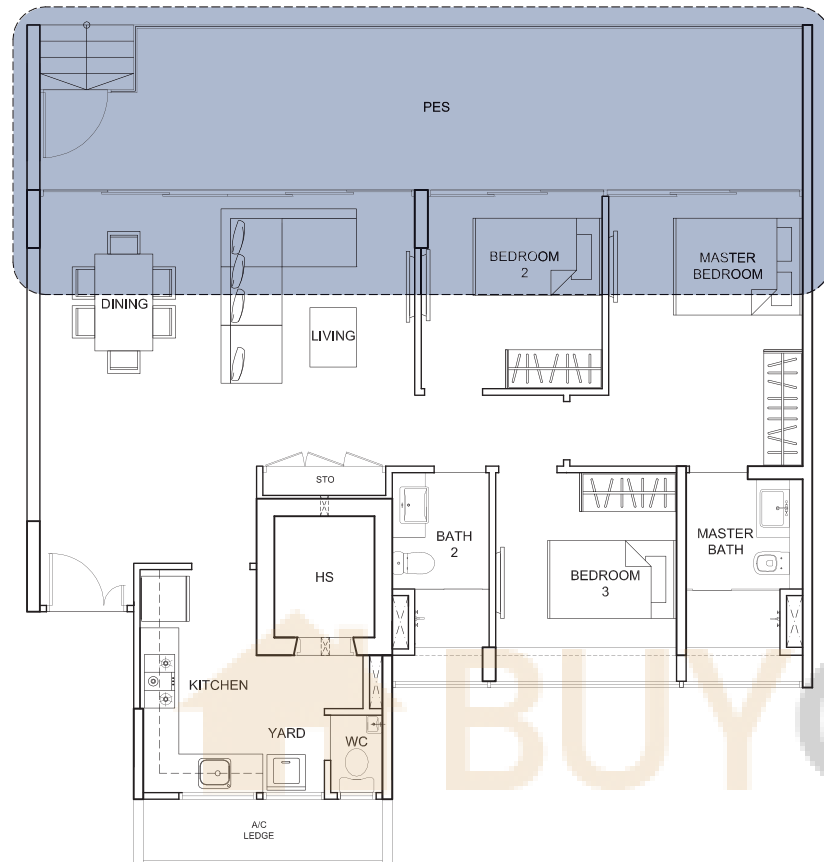
87 sq m/936 sq ft
#03-15, #04-15

2-BEDROOM

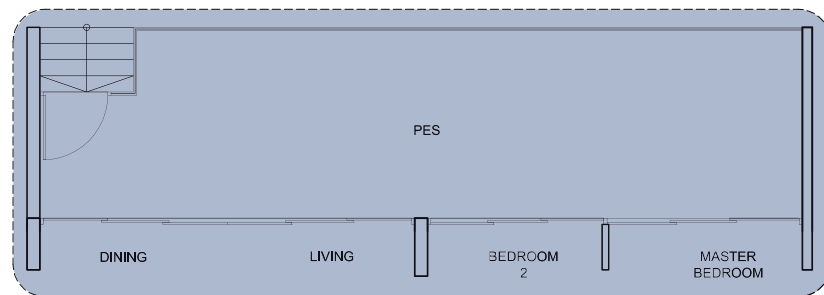


3-BEDROOM

TYPE C1-P

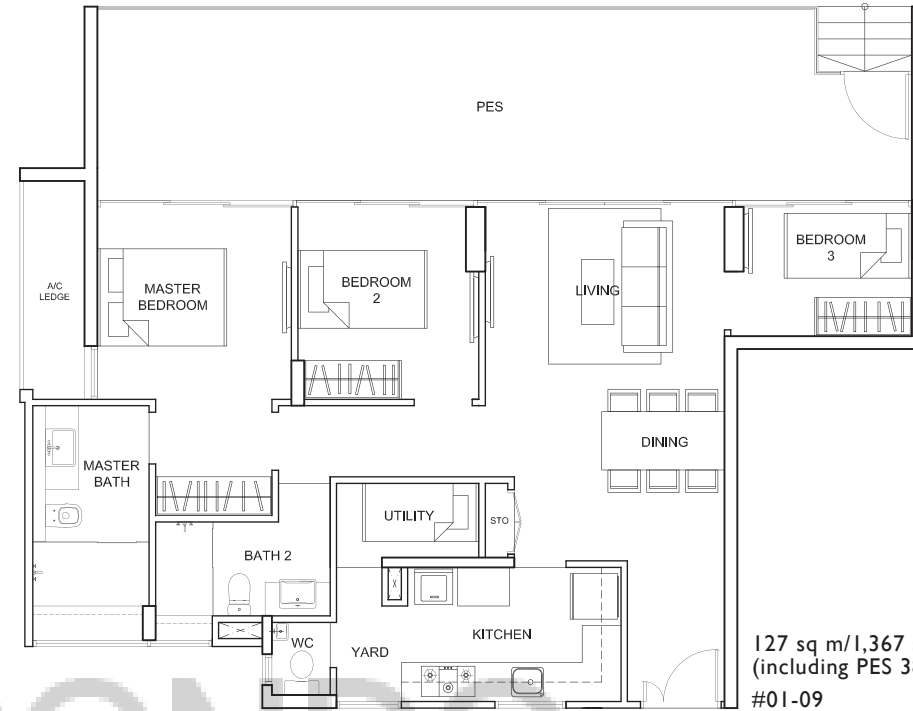


129 sq m/1,389 sq ft
(including PES 31 sq m/334 sq ft)
#01-11
#01-16 (mirror)



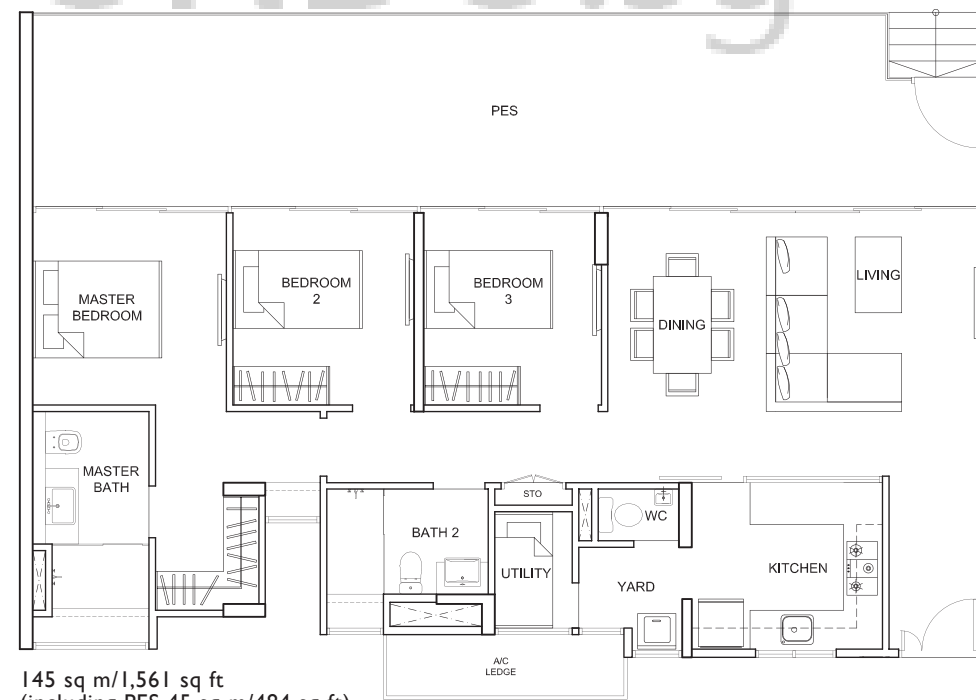
135 sq m/1,453 sq ft
(including PES 36 sq m/388 sq ft)
#01-17
#01-19 (mirror)

TYPE C2-P

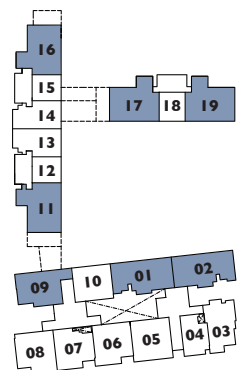


127 sq m/1,367 sq ft
(including PES 38 sq m/409 sq ft)
#01-09

TYPE C3-P

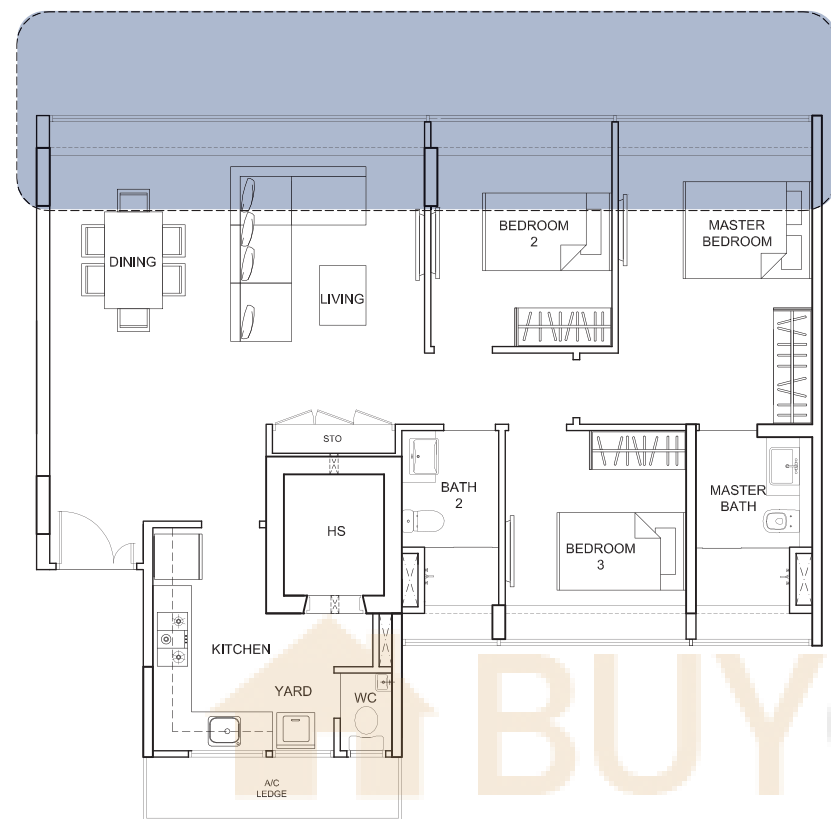


145 sq m/1,561 sq ft
(including PES 45 sq m/484 sq ft)
#01-01
#01-02 (mirror)

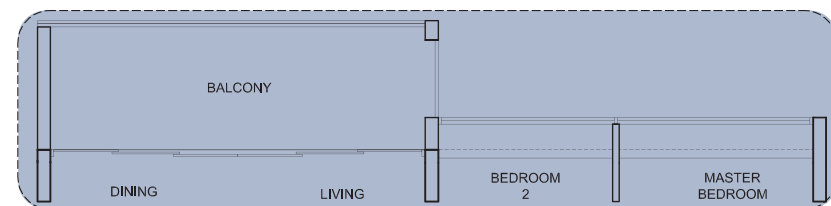


Plans are not to scale and are subject to any amendment as may be approved by the relevant authorities. All floor areas are approximate and are subject to final survey.

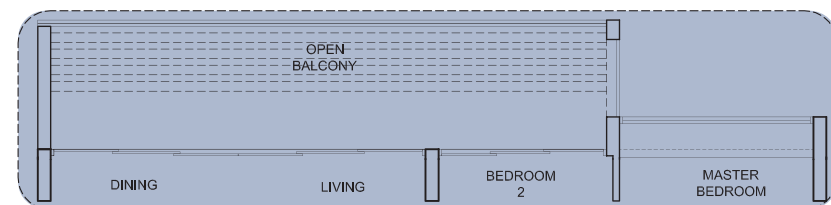
TYPE C1



105 sq m/1,130 sq ft
 #02-11, #02-17
 #02-16, #02-19 (mirror)

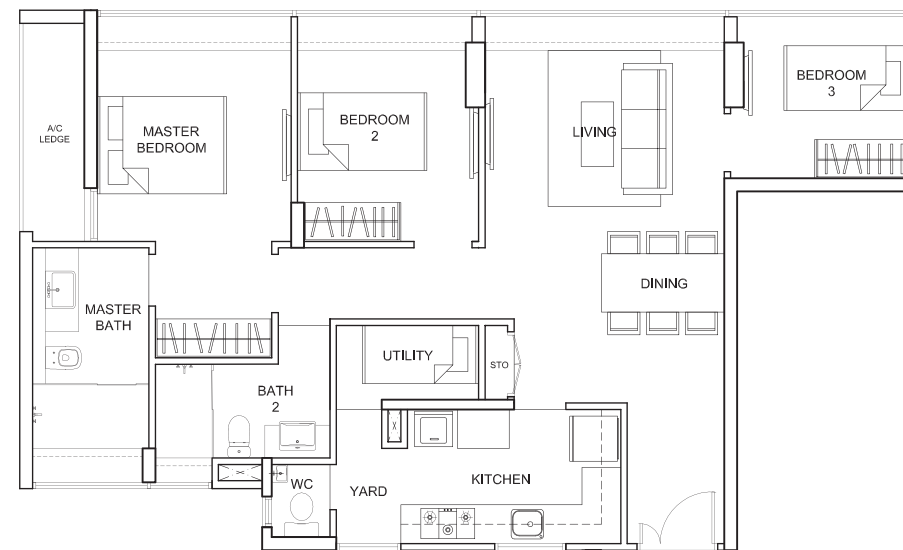


114 sq m/1,227 sq ft
 #03-19, #04-19 (mirror)



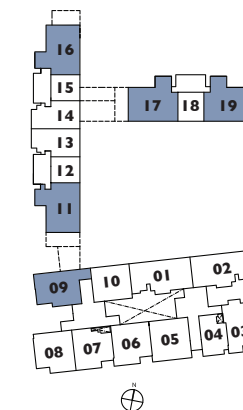
118 sq m/1,270 sq ft
 #05-19 (mirror)

TYPE C2



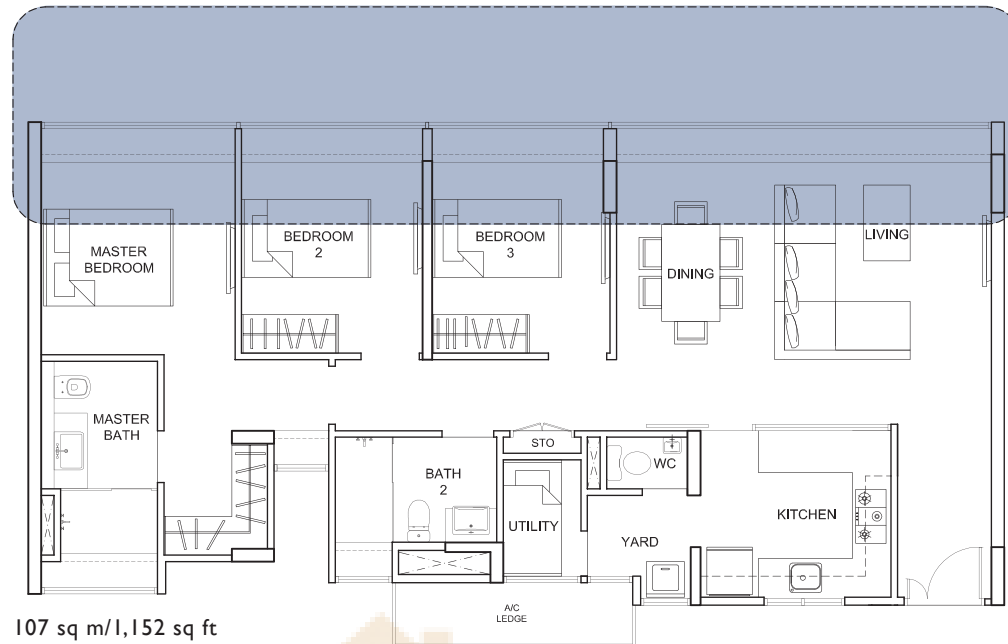
94 sq m/1,012 sq ft
 #02-09

BUYCONDO.sg

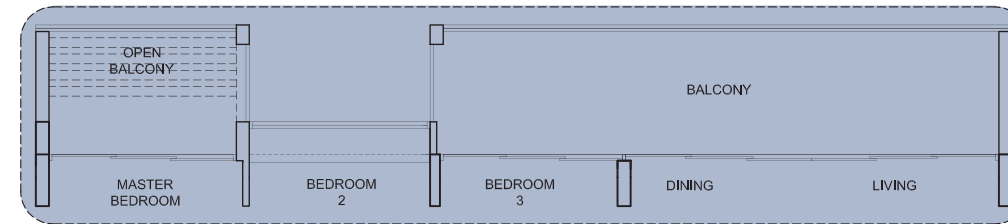


3-BEDROOM

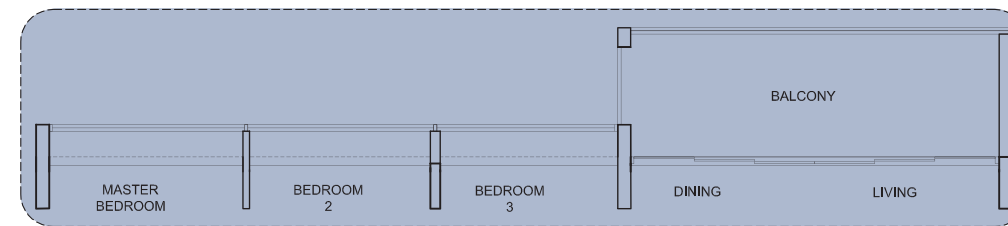
TYPE C3



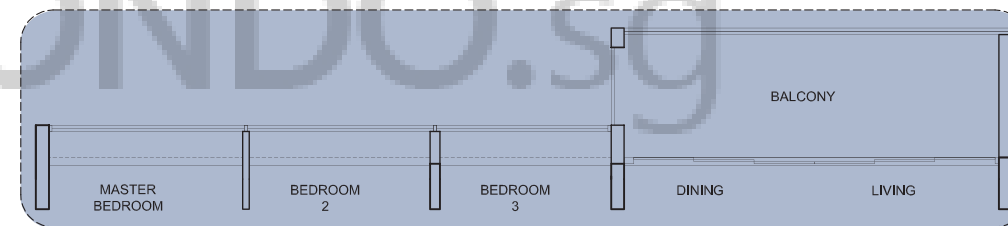
107 sq m/1,152 sq ft
#02-01
#02-02 (mirror)



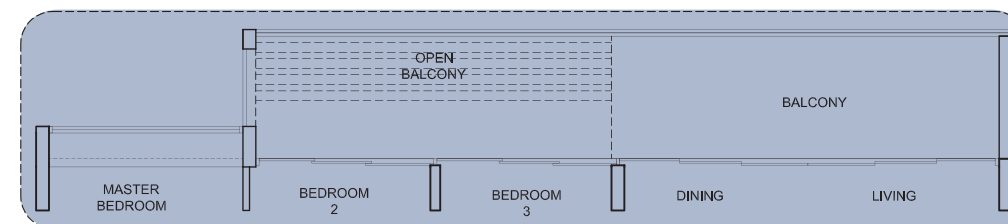
125 sq m/1,346 sq ft
#03-01



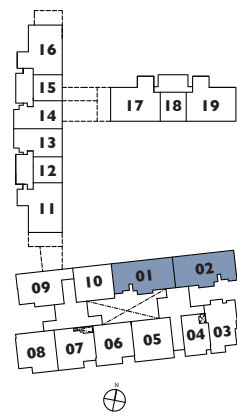
116 sq m/1,249 sq ft
#03-02 (mirror)



116 sq m/1,249 sq ft
#04-01

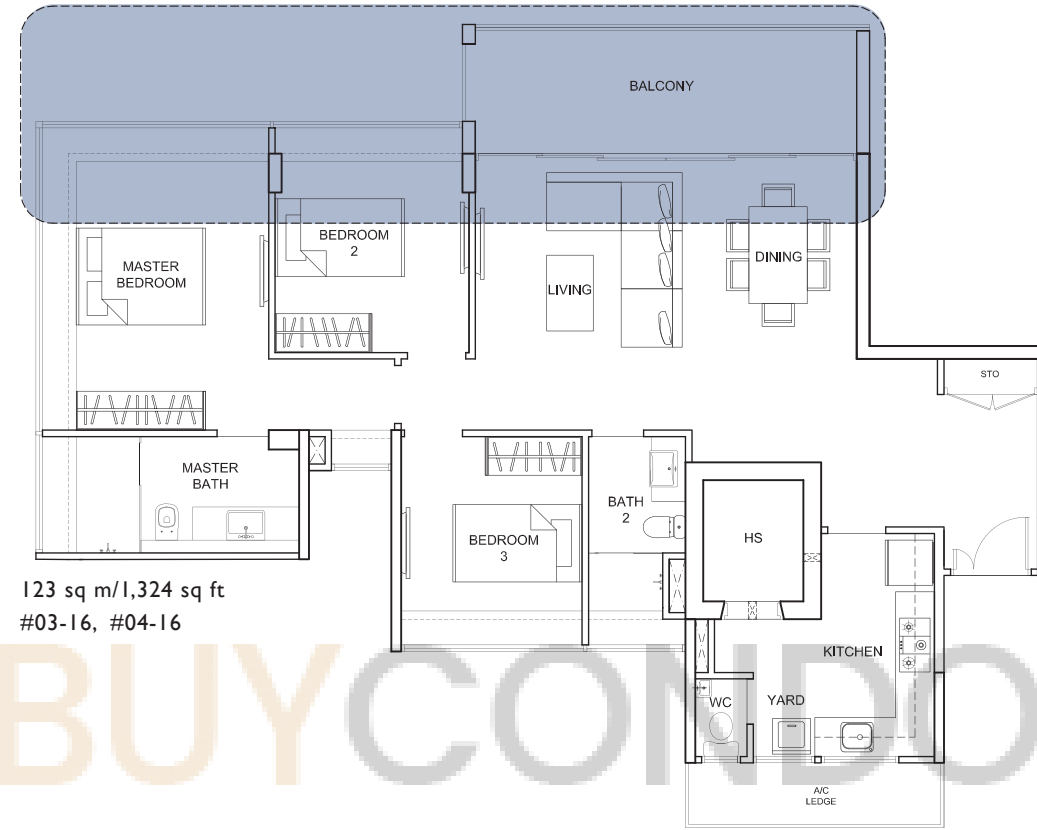


125 sq m/1,346 sq ft
#04-02 (mirror)

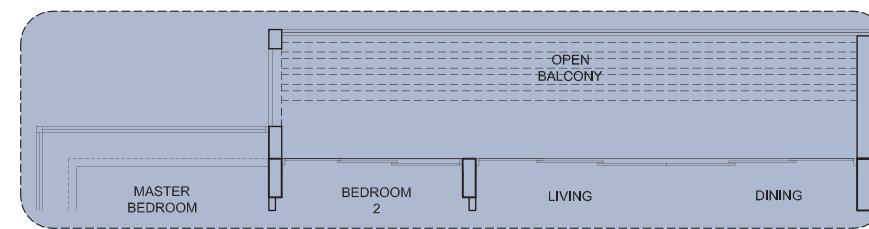


Plans are not to scale and are subject to any amendment as may be approved by the relevant authorities. All floor areas are approximate and are subject to final survey.

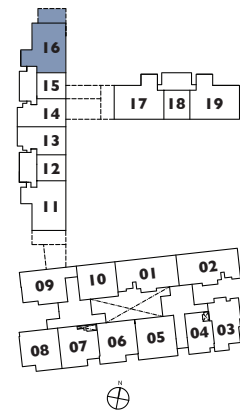
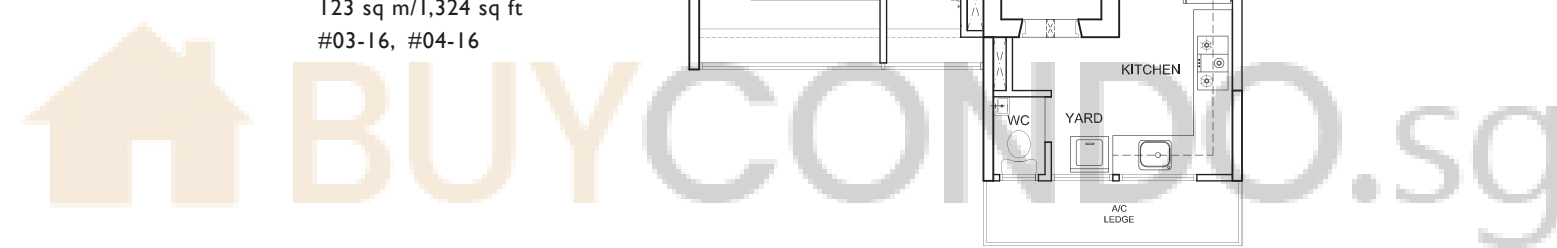
TYPE C4



123 sq m/1,324 sq ft
#03-16, #04-16



128 sq m/1,378 sq ft
#05-16



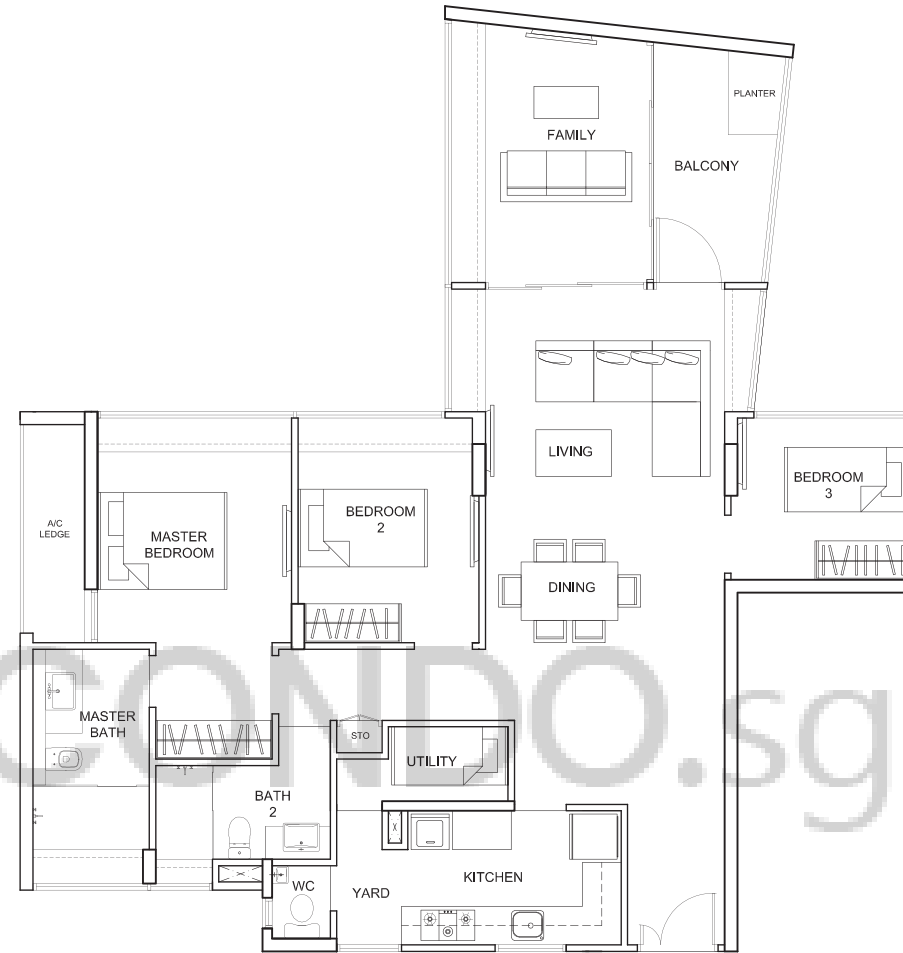
3-BEDROOM

TYPE C5

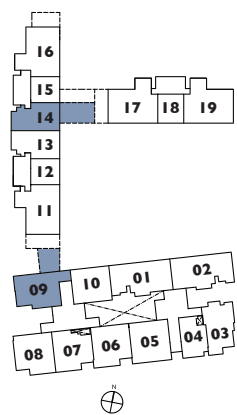


110 sq m/1,184 sq ft
#03-14, #04-14, #05-14

TYPE C6

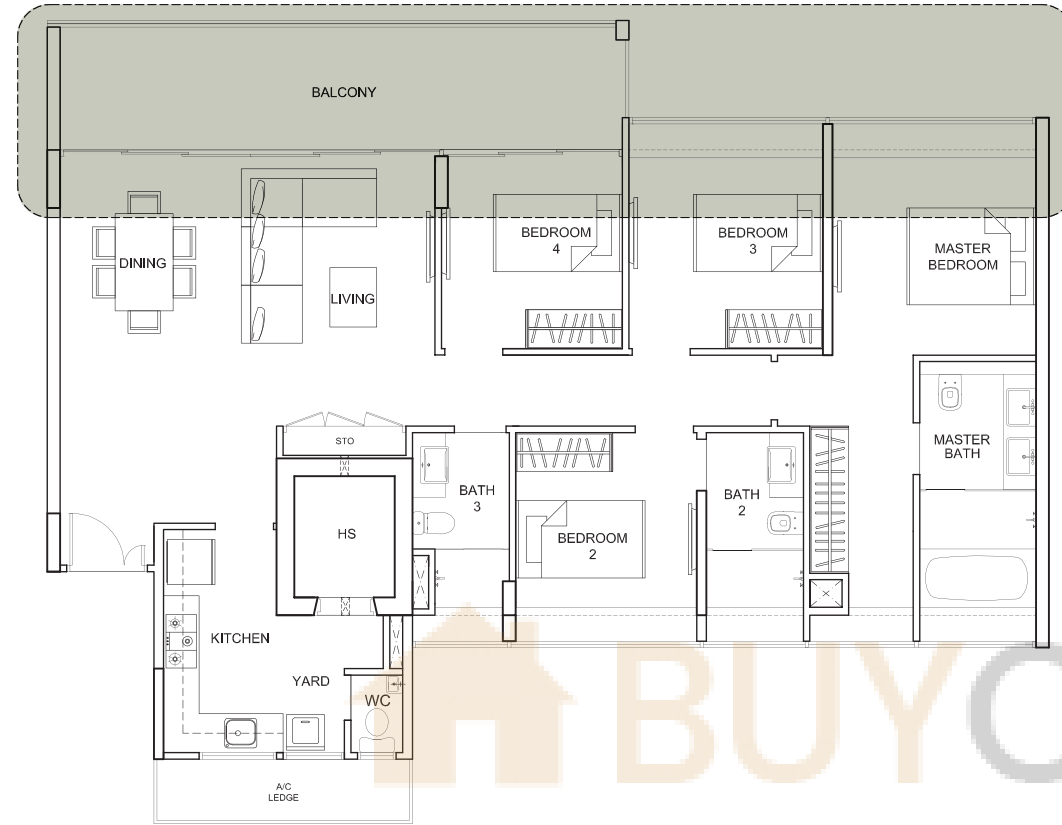


124 sq m/1,335 sq ft
#03-09, #04-09

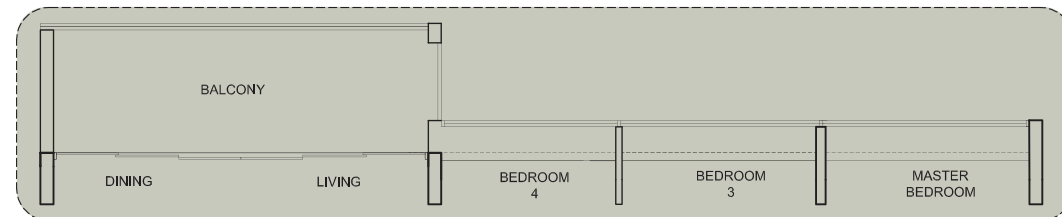


Plans are not to scale and are subject to any amendment as may be approved by the relevant authorities. All floor areas are approximate and are subject to final survey.

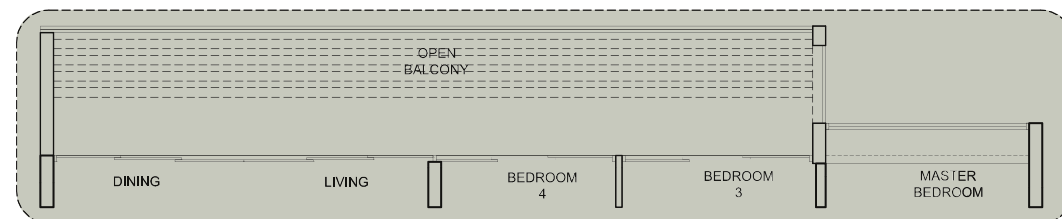
TYPE D1



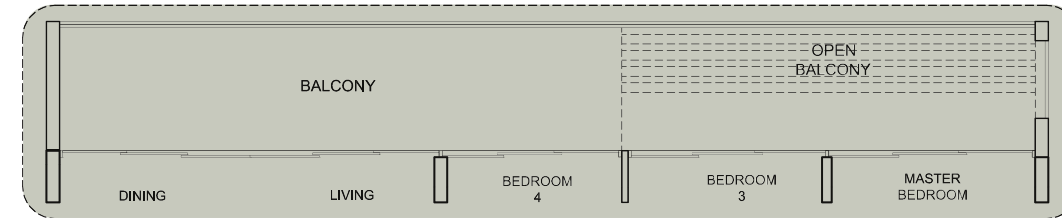
145 sq m/1,561 sq ft
#03-11



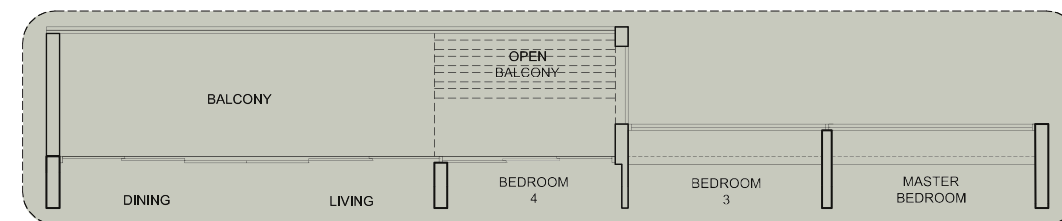
141 sq m/1,518 sq ft
#04-11



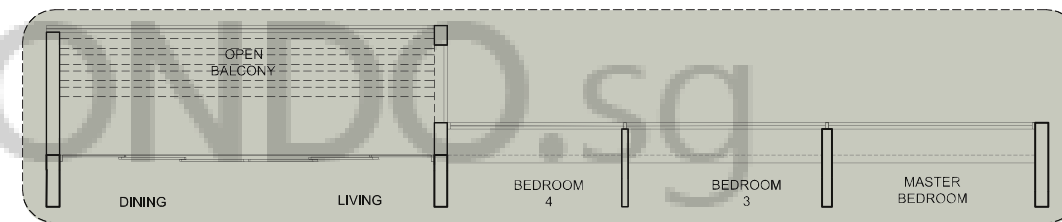
149 sq m/1,604 sq ft
#05-11



155 sq m/1,668 sq ft
#03-17

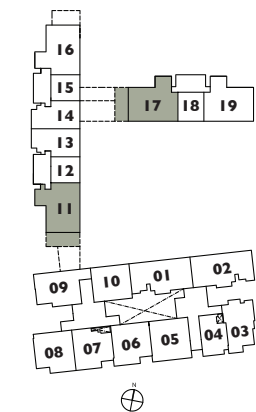


145 sq m/1,561 sq ft
#04-17



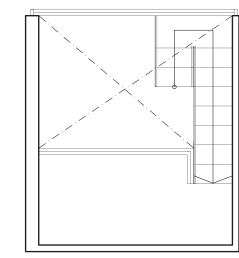
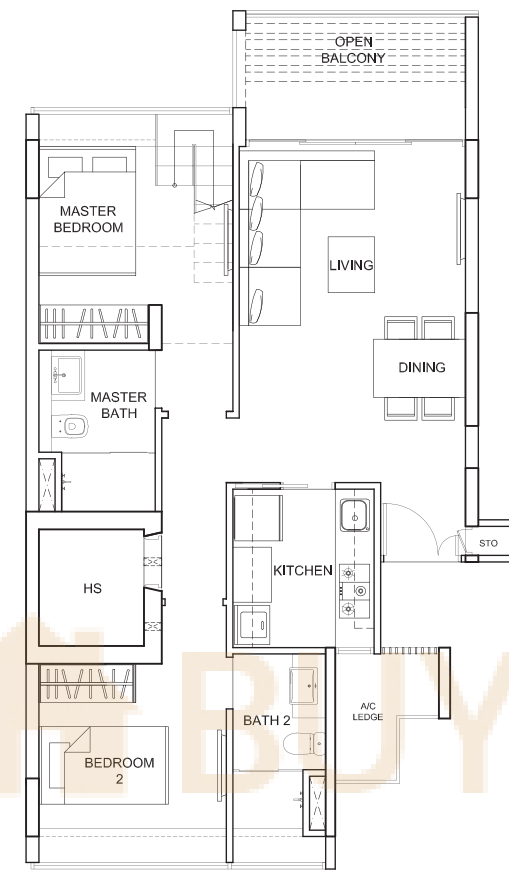
141 sq m/1,518 sq ft
#05-17

4-BEDROOM



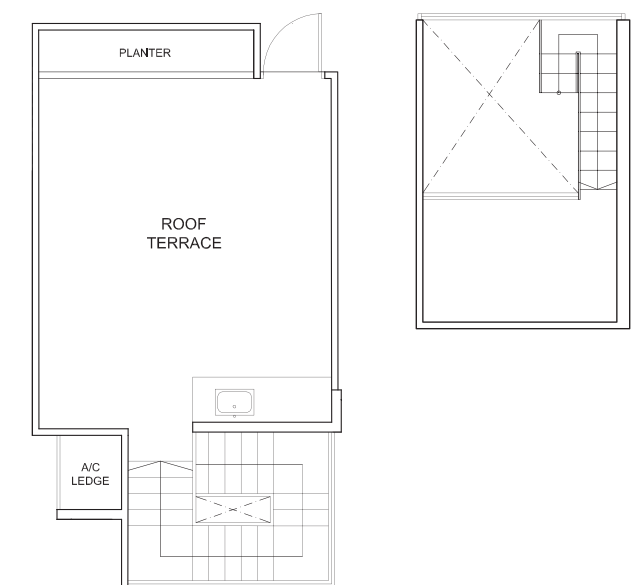
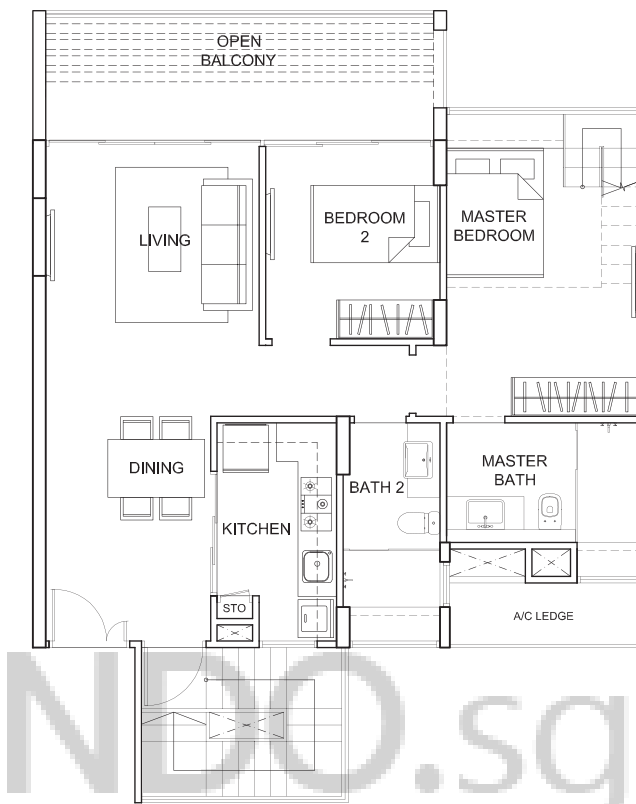
2-BEDROOM LOFT / PENTHOUSE

TYPE BI-L

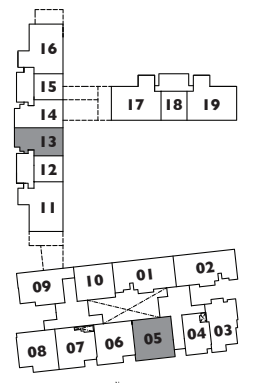


78 sq m/840 sq ft
#05-13

TYPE B2-PH

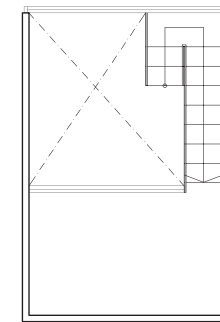
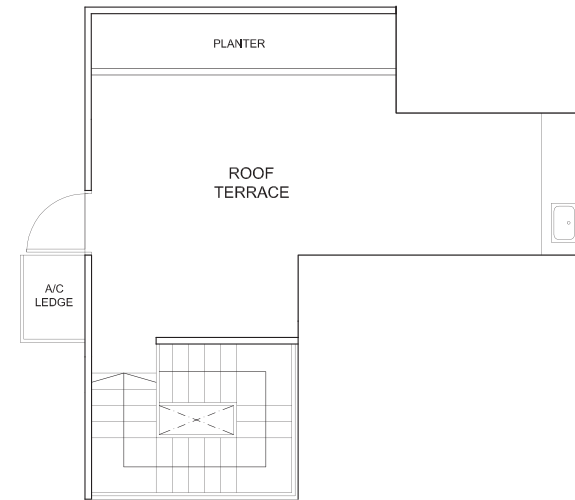
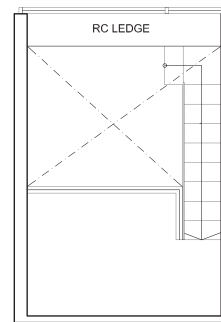
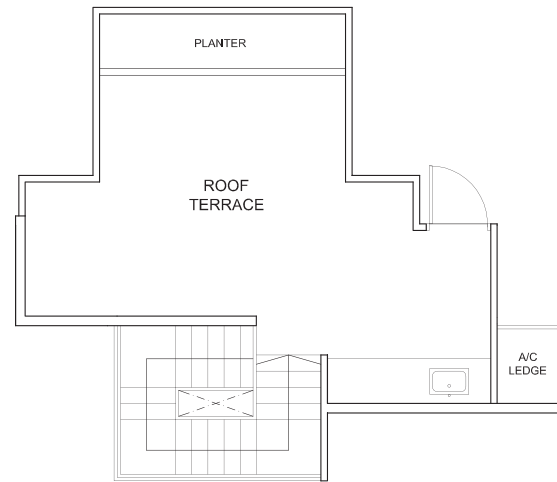
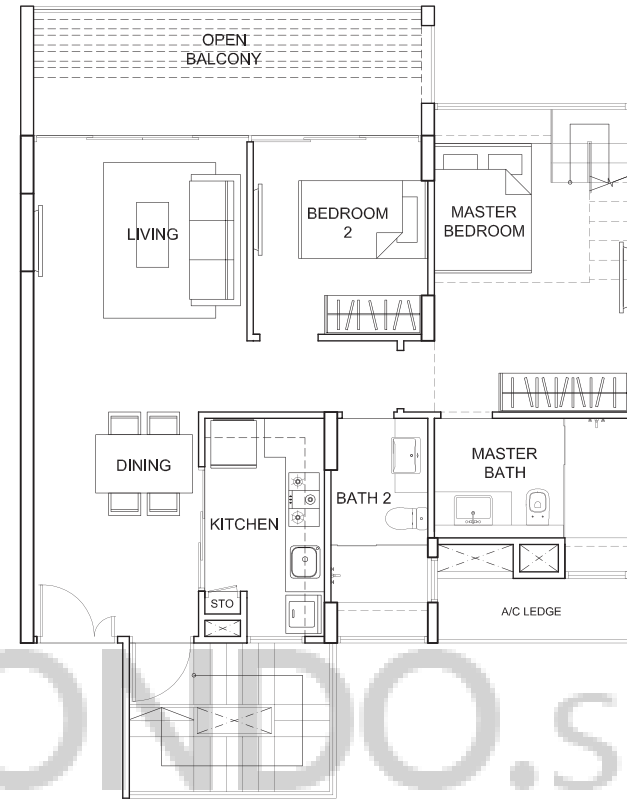
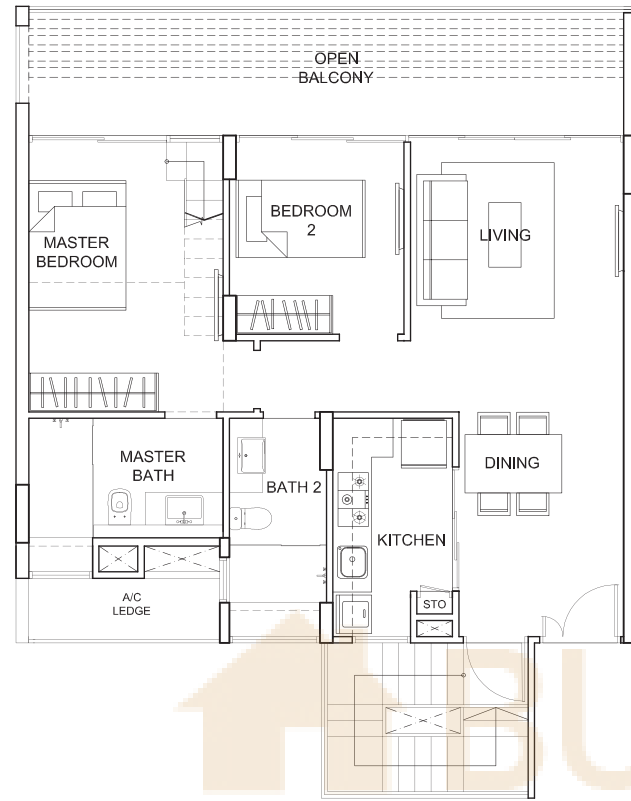


122 sq m/1,313 sq ft
(including Roof Terrace 26 sq m/280 sq ft)
#05-05



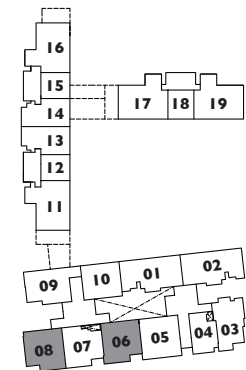
Plans are not to scale and are subject to any amendment as may be approved by the relevant authorities. All floor areas are approximate and are subject to final survey.

TYPE B2-PH



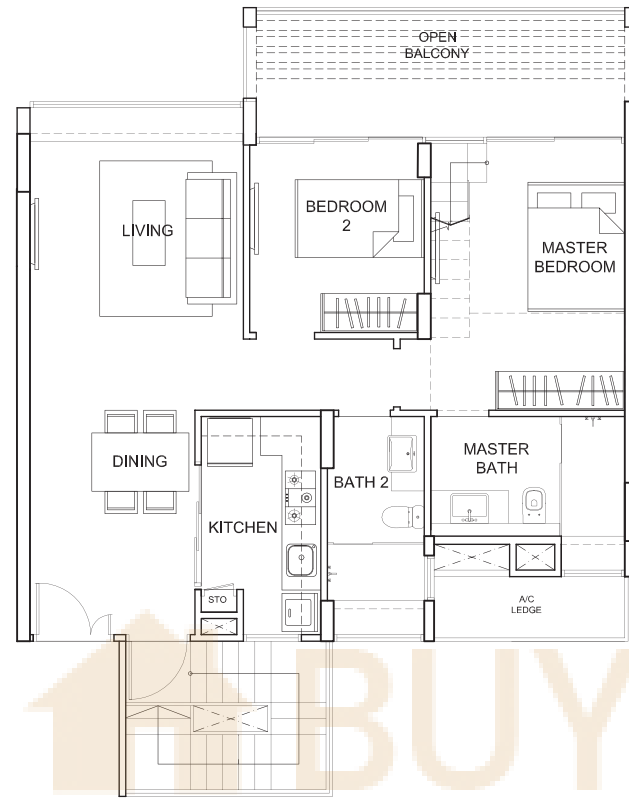
128 sq m/1,378 sq ft
(including Roof Terrace 25 sq m/269 sq ft)
#05-06

122 sq m/1,313 sq ft
(including Roof Terrace 24 sq m/ 258 sq ft)
#05-08

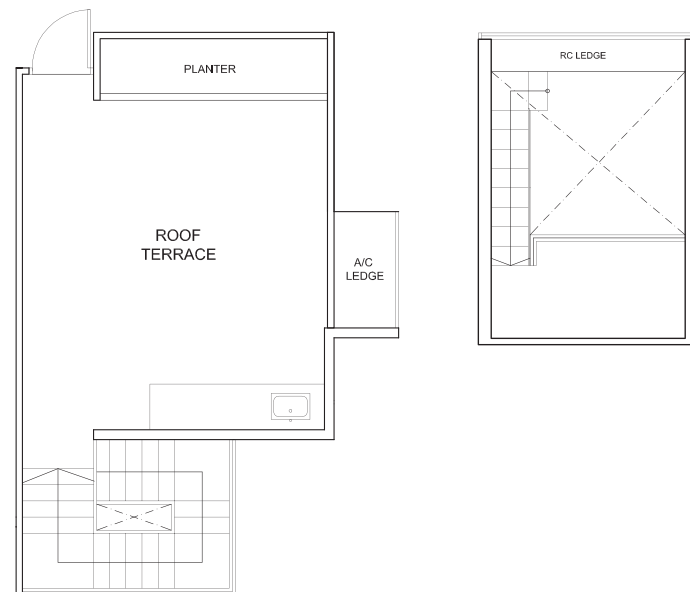


2-BEDROOM LOFT / PENTHOUSE

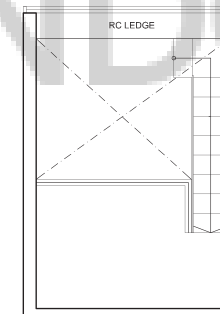
TYPE B2-PH



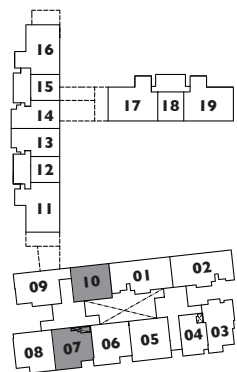
TYPE B3-L



123 sq m/1,324 sq ft
(including Roof Terrace 26 sq m/280 sq ft)
#05-10

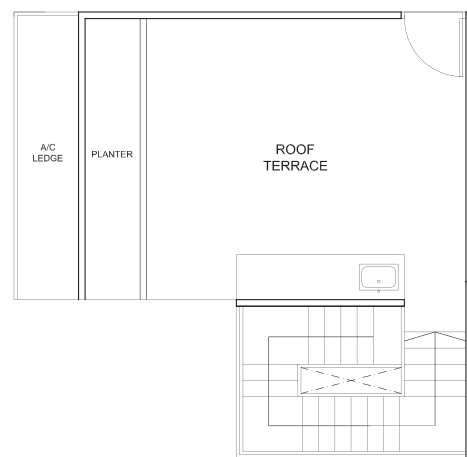
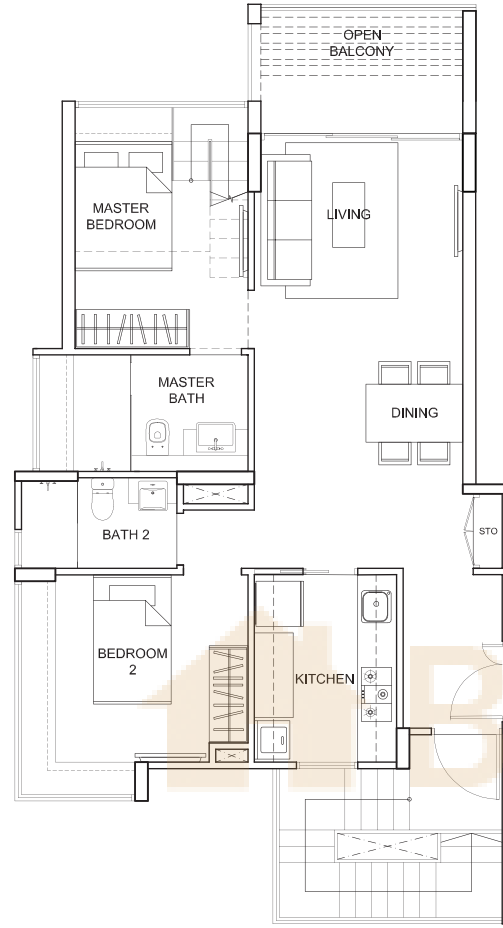


84 sq m/904 sq ft
#05-07

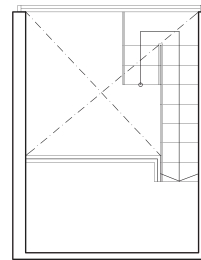


Plans are not to scale and are subject to any amendment as may be approved by the relevant authorities. All floor areas are approximate and are subject to final survey.

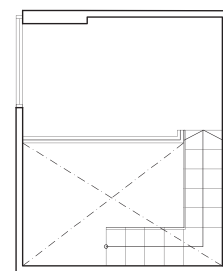
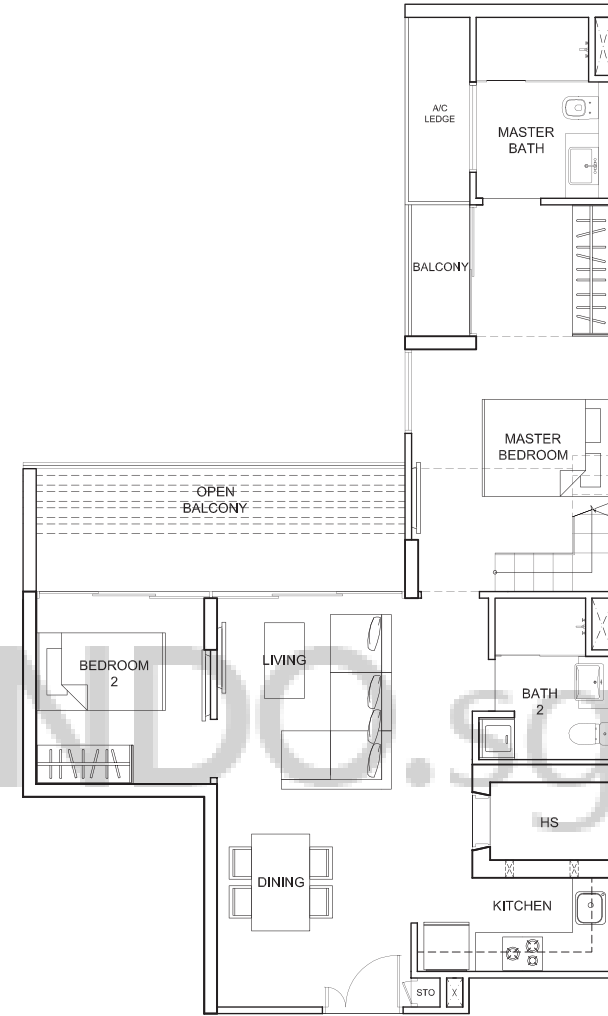
TYPE B4-PH



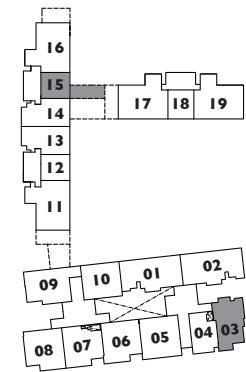
115 sq m/1,238 sq ft
(including Roof Terrace 22 sq m/237 sq ft)
#05-03



TYPE B5-L

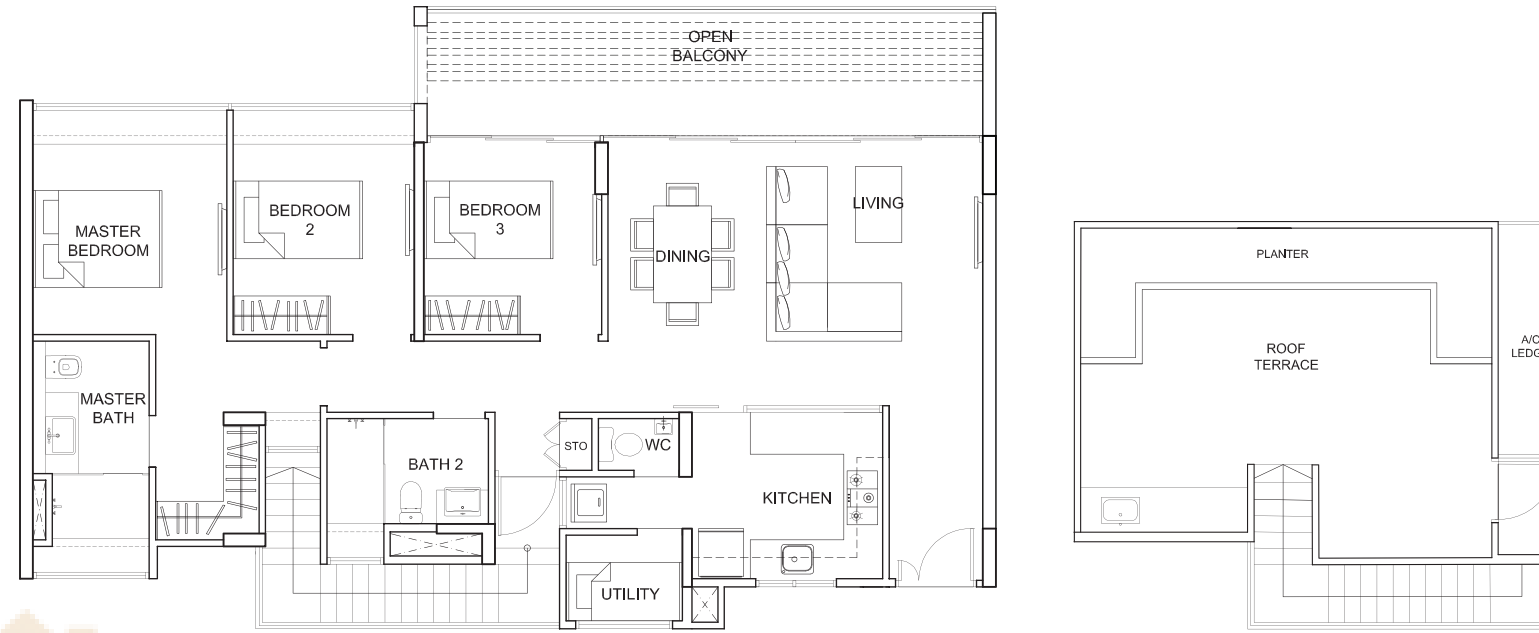


88 sq m/947 sq ft
#05-15

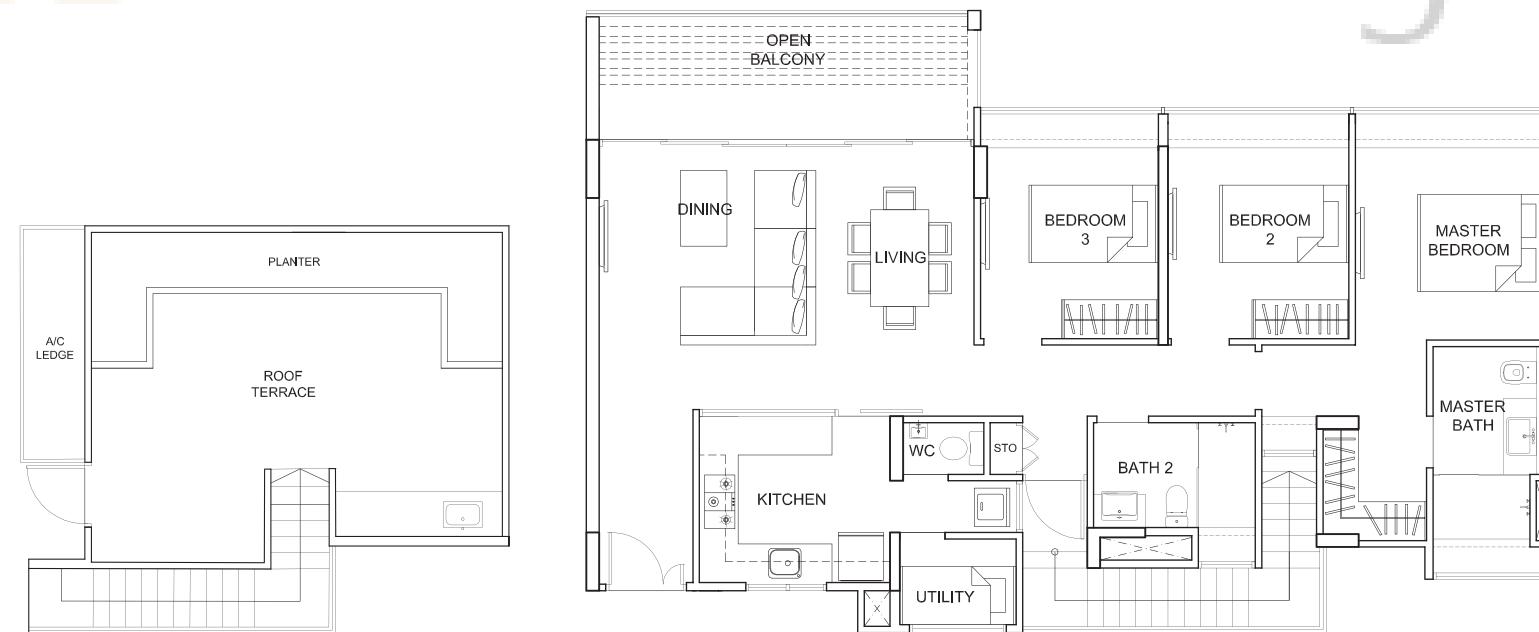
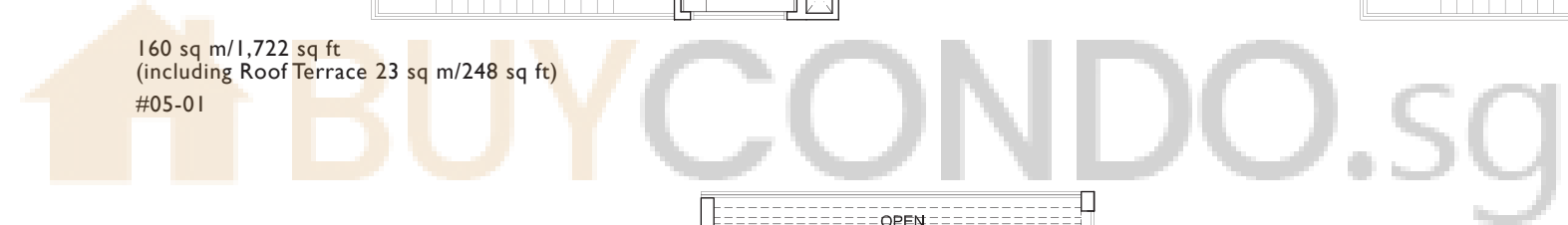


3-BEDROOM PENTHOUSE

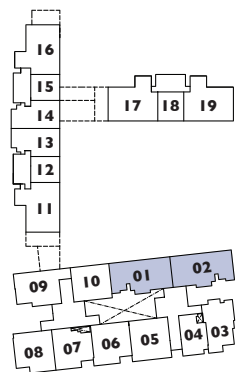
TYPE C3-PH



160 sq m / 1,722 sq ft
 (including Roof Terrace 23 sq m / 248 sq ft)
 #05-01

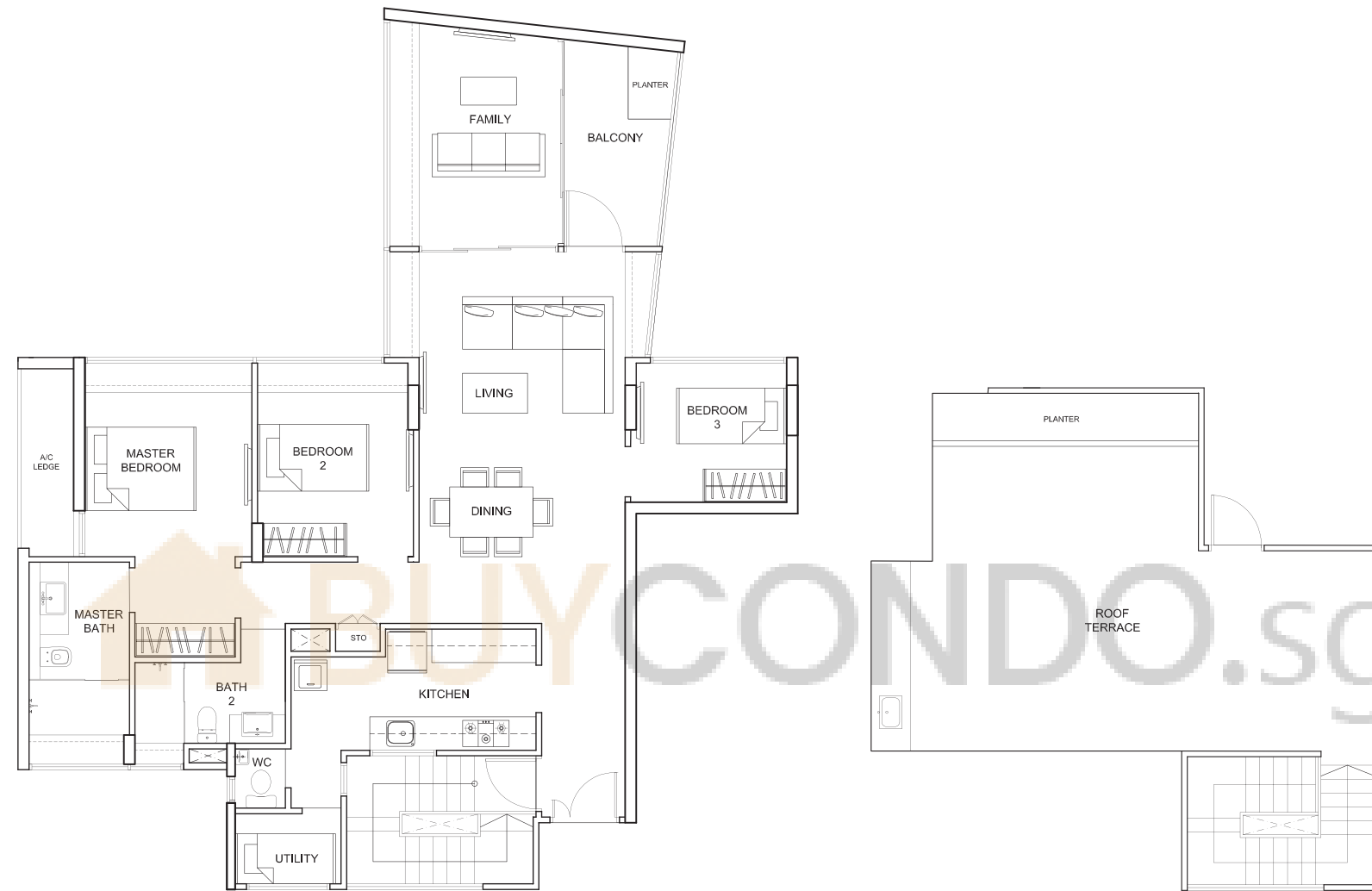


156 sq m / 1,679 sq ft
 (including Roof Terrace 23 sq m / 248 sq ft)
 #05-02



Plans are not to scale and are subject to any amendment as may be approved by the relevant authorities. All floor areas are approximate and are subject to final survey.

TYPE C6-PH



177 sq m / 1,905 sq ft
(including Roof Terrace 43 sq m / 463 sq ft)
#05-09

3-BEDROOM PENTHOUSE

