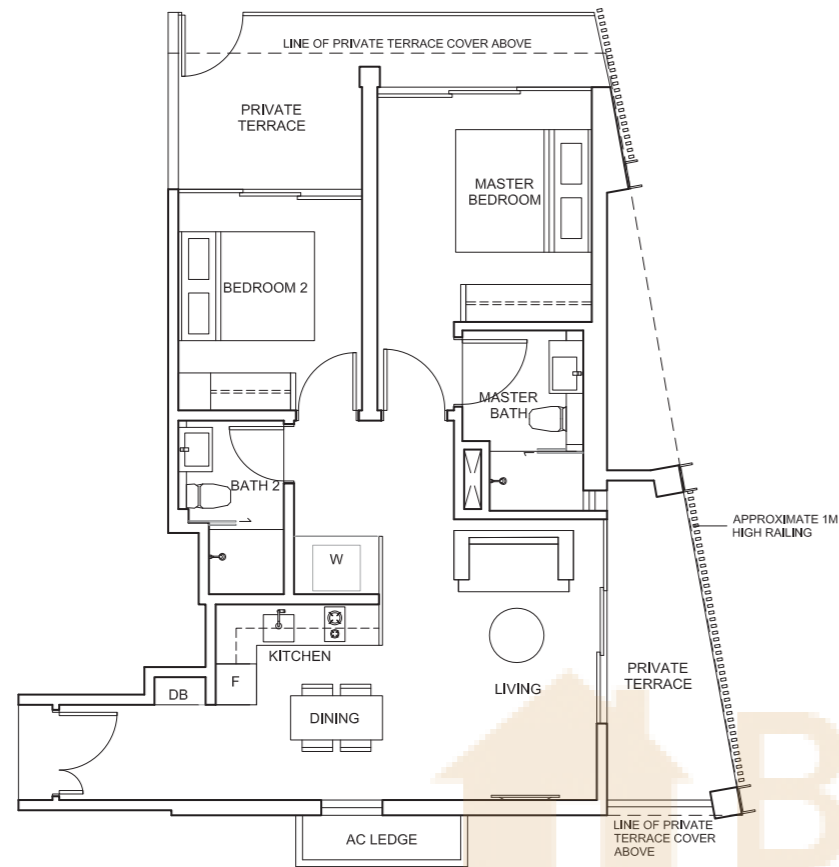
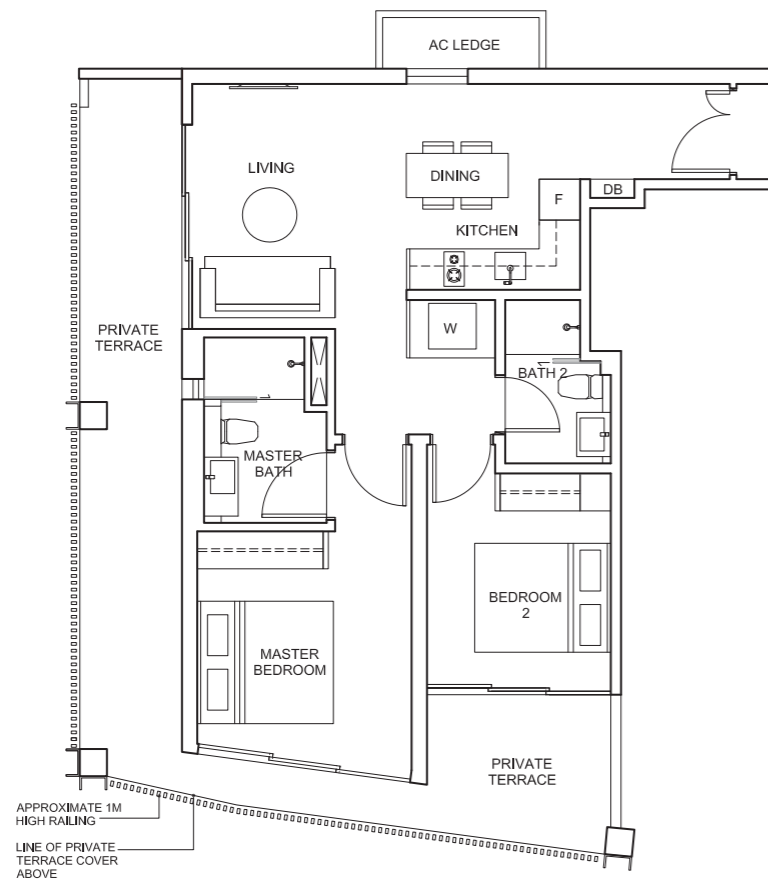


2-BEDROOM SUITE

TYPE BP1
85 sq.m. / 915 sq.ft
BLOCK 12
#02-18



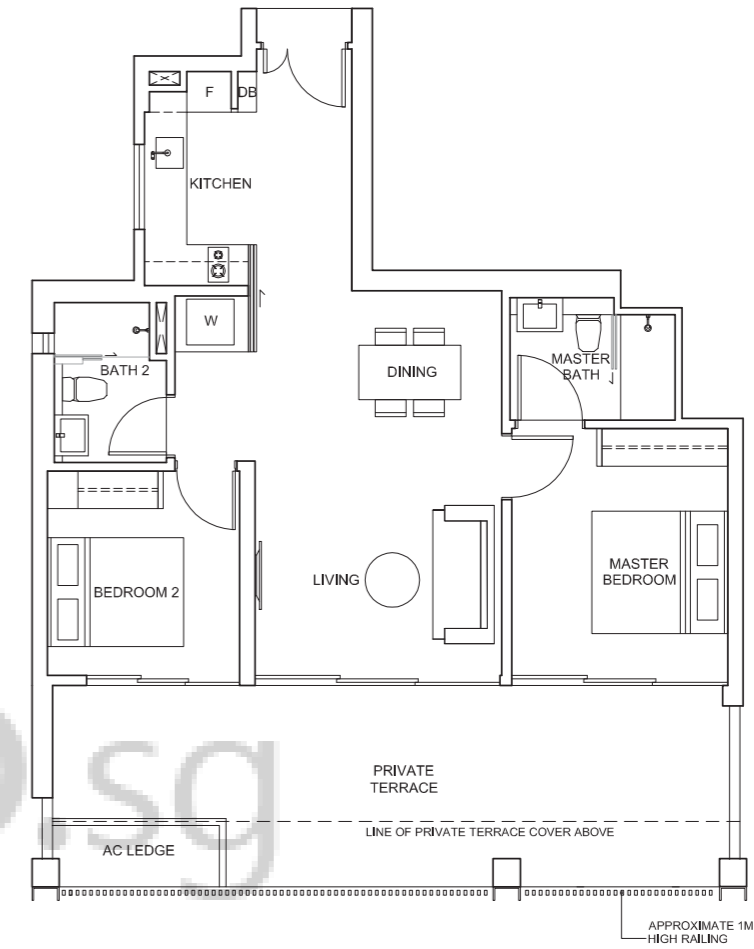
TYPE BP2
91 sq.m. / 980 sq.ft
BLOCK 14
#02-26



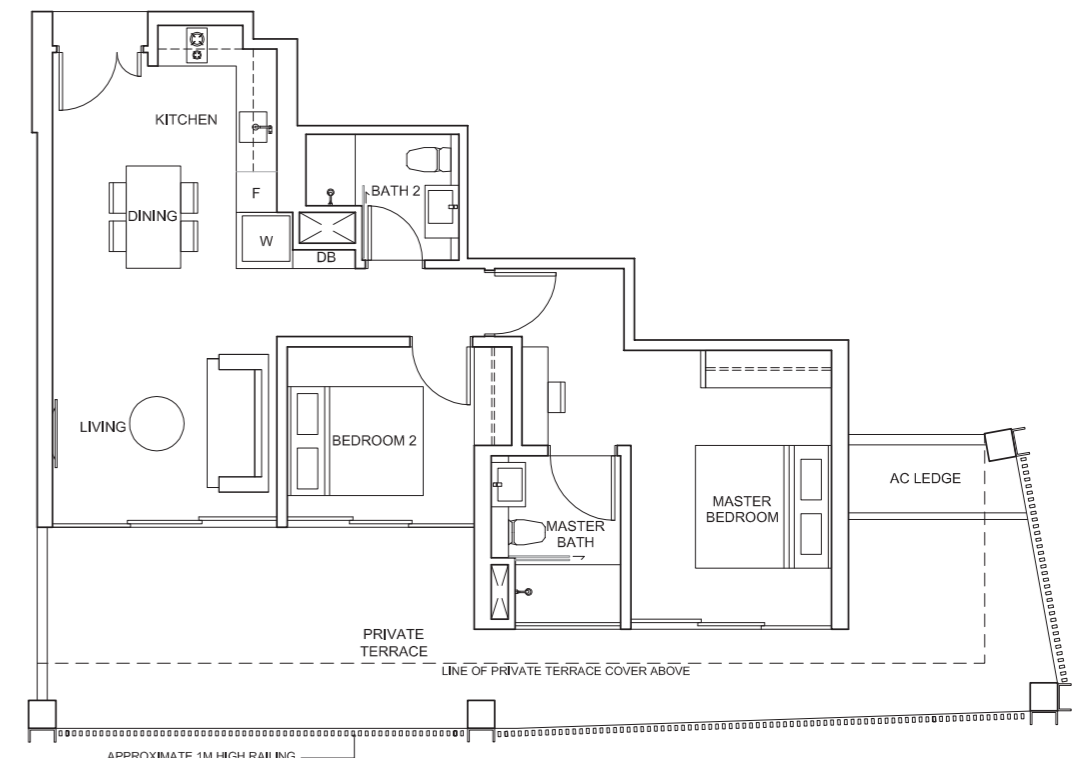
SIZES, QUANTITIES AND SPACING FOR THE RAILING AS INDICATED ARE FOR ILLUSTRATION ONLY AND MAYBE VARIED IN ACTUAL CONSTRUCTION ACCORDING TO THE ARCHITECT'S DISCRETION AND / OR AS REQUIRED BY RELEVANT AUTHORITIES.

2-BEDROOM SUITE

TYPE BP3
100 sq.m. / 1076 sq.ft
BLOCK 12
#02-21



TYPE BP4
104 sq.m. / 1119 sq.ft
BLOCK 12
#02-20



SIZES, QUANTITIES AND SPACING FOR THE RAILING AS INDICATED ARE FOR ILLUSTRATION ONLY AND MAYBE VARIED IN ACTUAL CONSTRUCTION ACCORDING TO THE ARCHITECT'S DISCRETION AND / OR AS REQUIRED BY RELEVANT AUTHORITIES.

2-BEDROOM SUITE

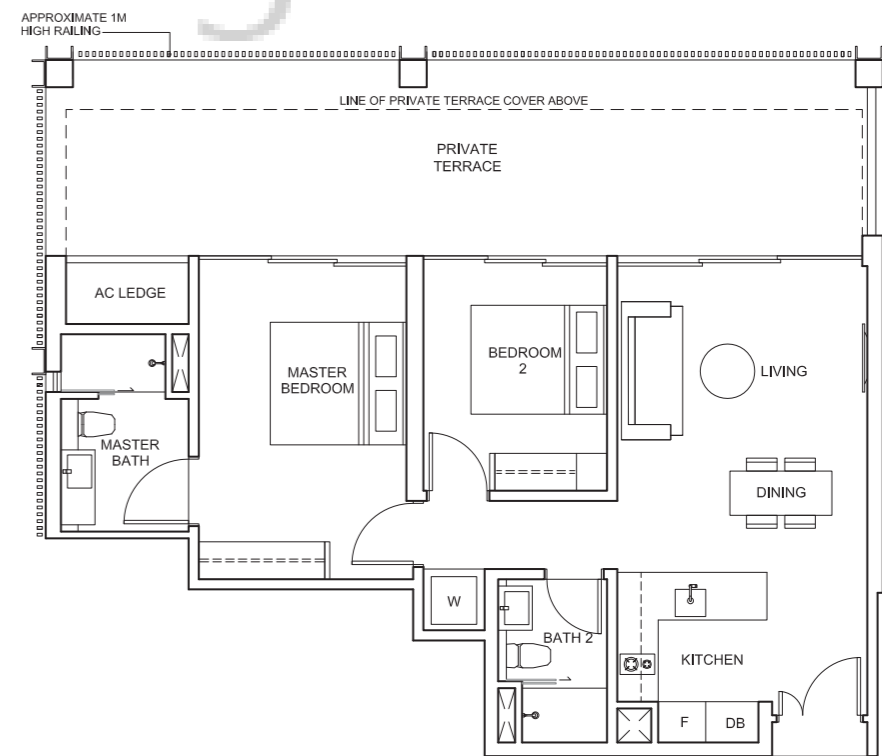
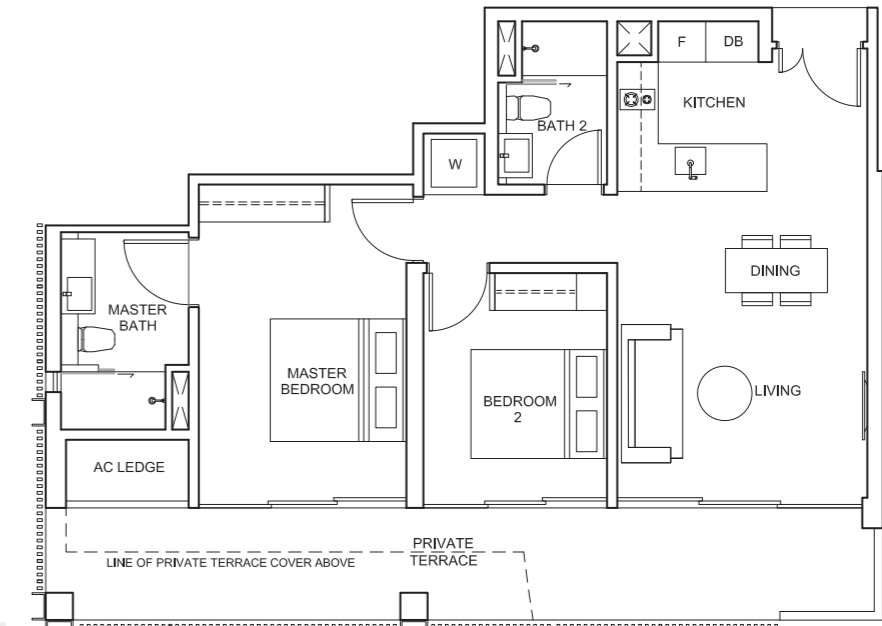
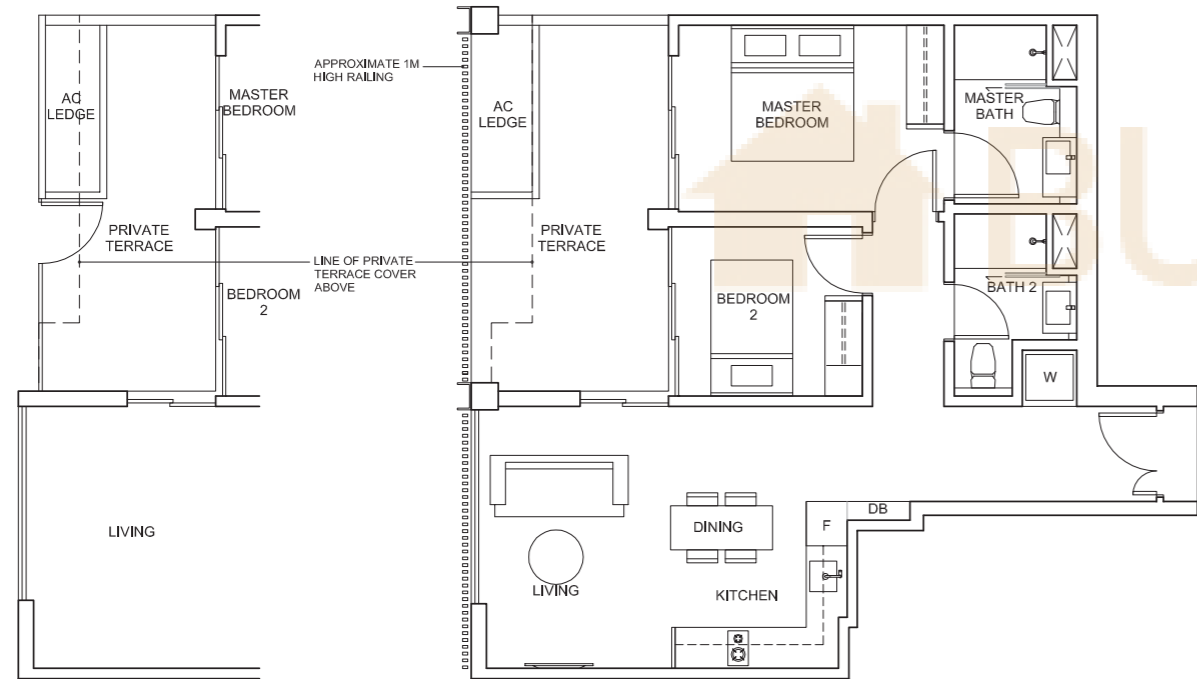
2-BEDROOM SUITE

TYPE BP5a
78 sq.m. / 840 sq.ft
BLOCK 8
#02-10

TYPE BP5
80 sq.m. / 861 sq.ft
BLOCK 6
#02-02
BLOCK 8
#02-07*
* MIRROR

TYPE BP6a
90 sq.m. / 969 sq.ft
BLOCK 6
#02-01

TYPE BP6
105 sq.m. / 1130 sq.ft
BLOCK 8
#02-08



SIZES, QUANTITIES AND SPACING FOR THE RAILING AS INDICATED ARE FOR ILLUSTRATION ONLY AND MAYBE VARIED IN ACTUAL CONSTRUCTION ACCORDING TO THE ARCHITECT'S DISCRETION AND / OR AS REQUIRED BY RELEVANT AUTHORITIES.

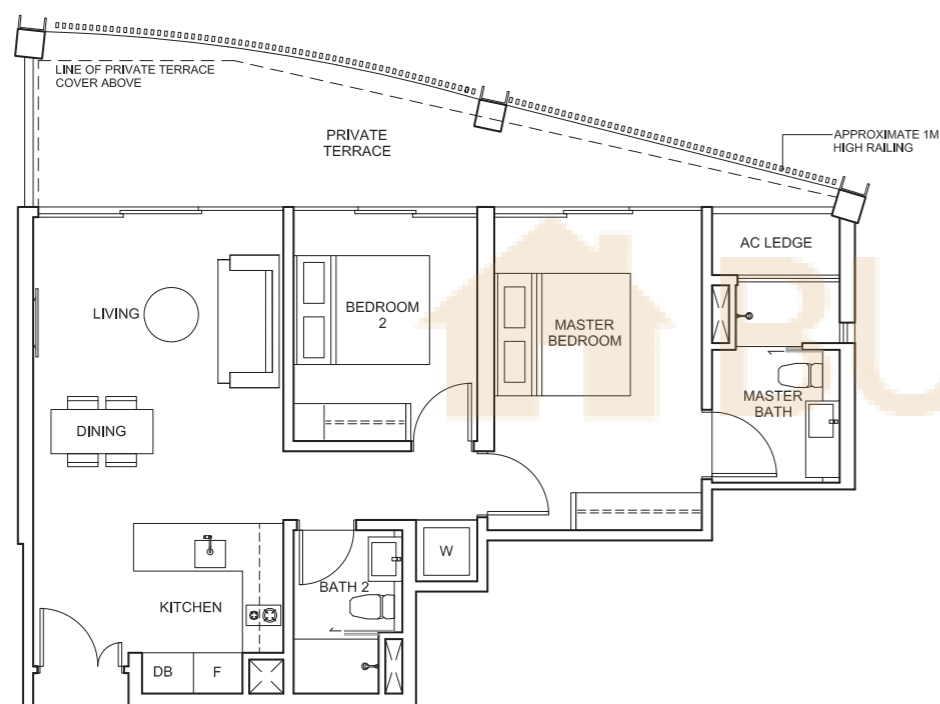


SIZES, QUANTITIES AND SPACING FOR THE RAILING AS INDICATED ARE FOR ILLUSTRATION ONLY AND MAYBE VARIED IN ACTUAL CONSTRUCTION ACCORDING TO THE ARCHITECT'S DISCRETION AND / OR AS REQUIRED BY RELEVANT AUTHORITIES.

2-BEDROOM SUITE

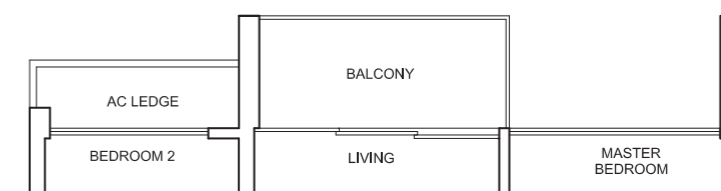
2-BEDROOM SUITE

TYPE BP7
90 sq.m. / 969 sq.ft
BLOCK 8
#02-09



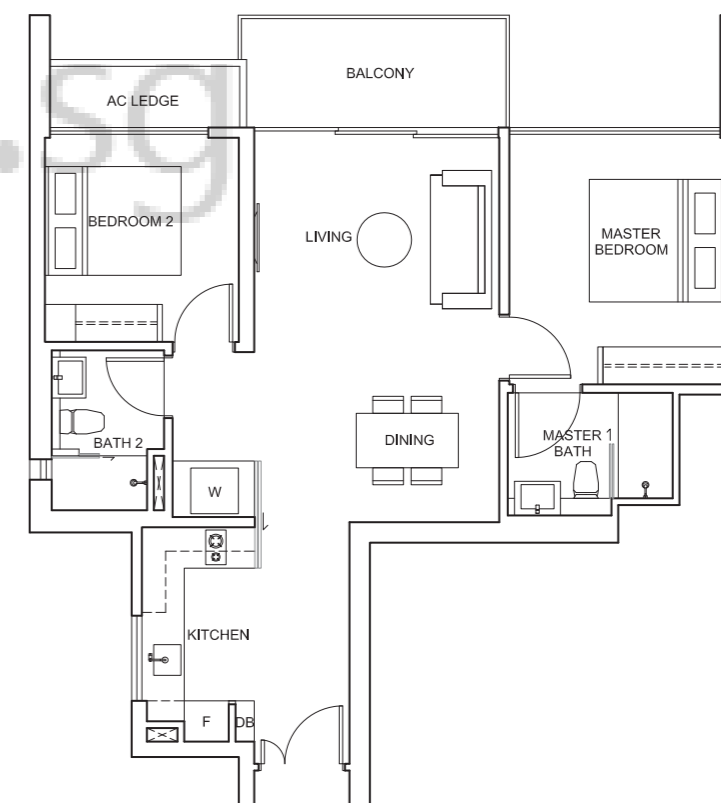
SIZES, QUANTITIES AND SPACING FOR THE RAILING AS INDICATED ARE FOR ILLUSTRATION ONLY AND MAYBE VARIED IN ACTUAL CONSTRUCTION ACCORDING TO THE ARCHITECT'S DISCRETION AND / OR AS REQUIRED BY RELEVANT AUTHORITIES.

TYPE B1a
79 sq.m. / 850 sq.ft
BLOCK 12
#12-17 TO #15-17
BLOCK 14
#05-23* TO #08-23*
* MIRROR



TYPE B1
79 sq.m. / 850 sq.ft
BLOCK 12
#03-17 TO #11-17
#16-17 TO #17-17
#03-20* TO #04-20*
#09-20* TO #17-20*

BLOCK 14
#03-23* TO #04-23*
#09-23* TO #17-23*
#03-24 TO #11-24
#16-24 TO #17-24
* MIRROR



PLEASE NOTE THAT THE ROOF COVERING FOR THE PRIVATE TERRACE OF THE LEVEL 2 UNITS CAN BE SEEN FROM THE LEVEL 3 UNITS. PLEASE REFER TO THE APPROVED PLANS FOR THE ROOF COVERING DESIGN.

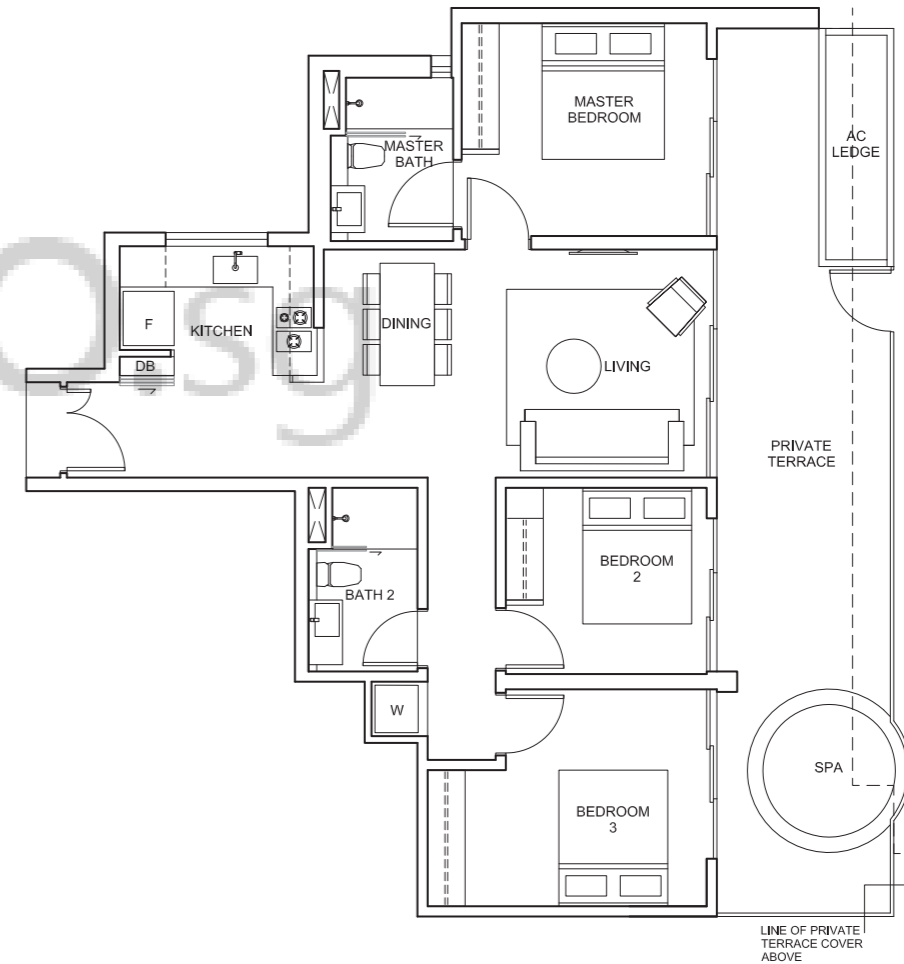
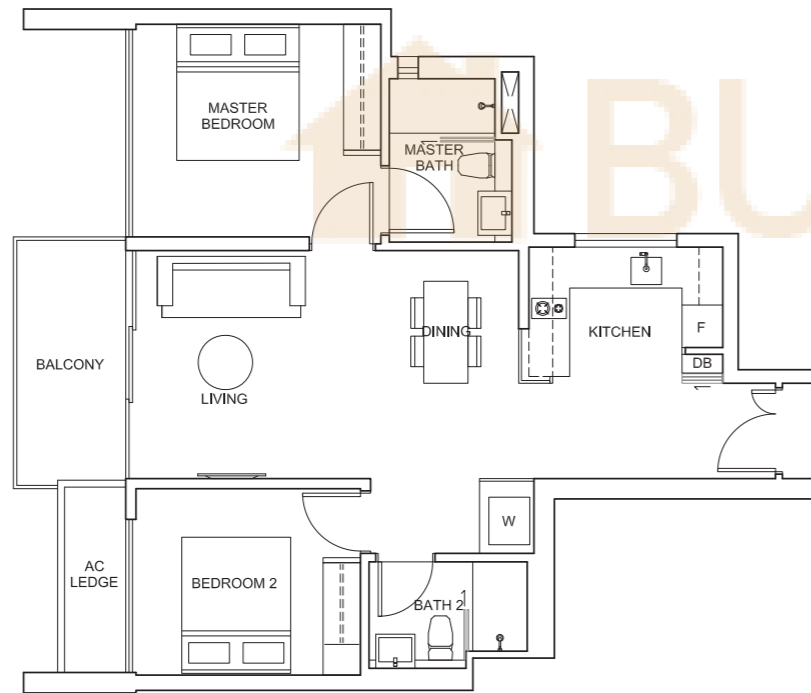
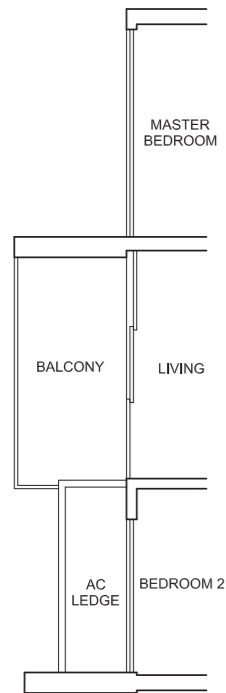
2-BEDROOM SUITE

3-BEDROOM SUITE

TYPE B2a
 78 sq.m. / 840 sq.ft
 BLOCK 6
 #12-04* TO #15-04*
 BLOCK 8
 #05-10 TO #08-10
 * MIRROR

TYPE B2
 78 sq.m. / 840 sq.ft
 BLOCK 6
 #03-03 TO #04-03
 #09-03 TO #17-03
 #03-04* TO #11-04*
 #16-04* TO #17-04*
 BLOCK 8
 #03-07* TO #11-07*
 #16-07* TO #17-07*
 #03-10 TO #04-10
 #09-10 TO #17-10
 * MIRROR

TYPE CP2
 118 sq.m. / 1270 sq.ft
 BLOCK 6
 #02-04



PLEASE NOTE THAT THE ROOF COVERING FOR THE PRIVATE TERRACE OF THE LEVEL 2 UNITS CAN BE SEEN FROM THE LEVEL 3 UNITS. PLEASE REFER TO THE APPROVED PLANS FOR THE ROOF COVERING DESIGN.

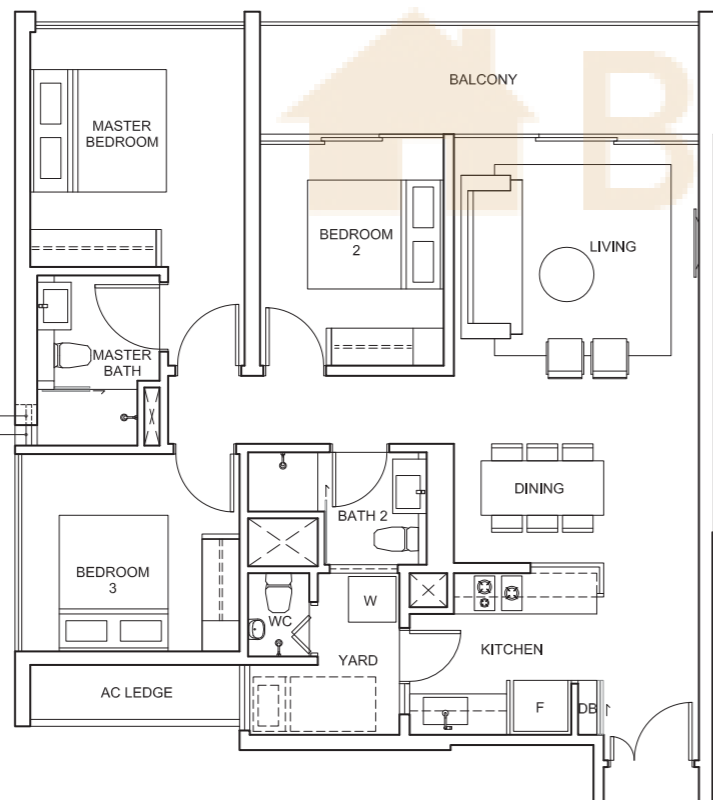
3-BEDROOM SUITE

TYPE C1a
 105 sq.m. / 1130 sq.ft
 BLOCK 12
 #12-18* TO #15-18*
 BLOCK 14
 #05-26 TO #08-26
 #12-25* TO #15-25*
 * MIRROR



WINDOW POSITION 2 FOR UNITS AT 3RD, 4TH, 7TH, 8TH, 11TH, 12TH, 15TH & 16TH STOREY ONLY
 WINDOW POSITION 1 FOR UNITS AT 5TH, 6TH, 9TH, 10TH, 13TH & 14TH STOREY ONLY

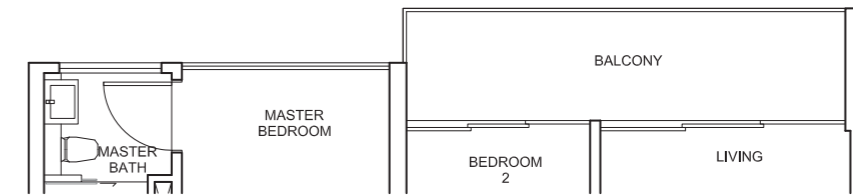
TYPE C1
 105 sq.m. / 1130 sq.ft
 BLOCK 12
 #03-18* TO #11-18*
 #16-18*
 BLOCK 14
 #03-25* TO #11-25*
 #16-25*
 #03-26 TO #04-26
 #09-26 TO #16-26
 * MIRROR



PLEASE NOTE THAT THE ROOF COVERING FOR THE PRIVATE TERRACE OF THE LEVEL 2 UNITS CAN BE SEEN FROM THE LEVEL 3 UNITS. PLEASE REFER TO THE APPROVED PLANS FOR THE ROOF COVERING DESIGN. RELEVANT AUTHORITIES' APPROVAL WILL BE SOUGHT FOR WINDOW POSITION 2.

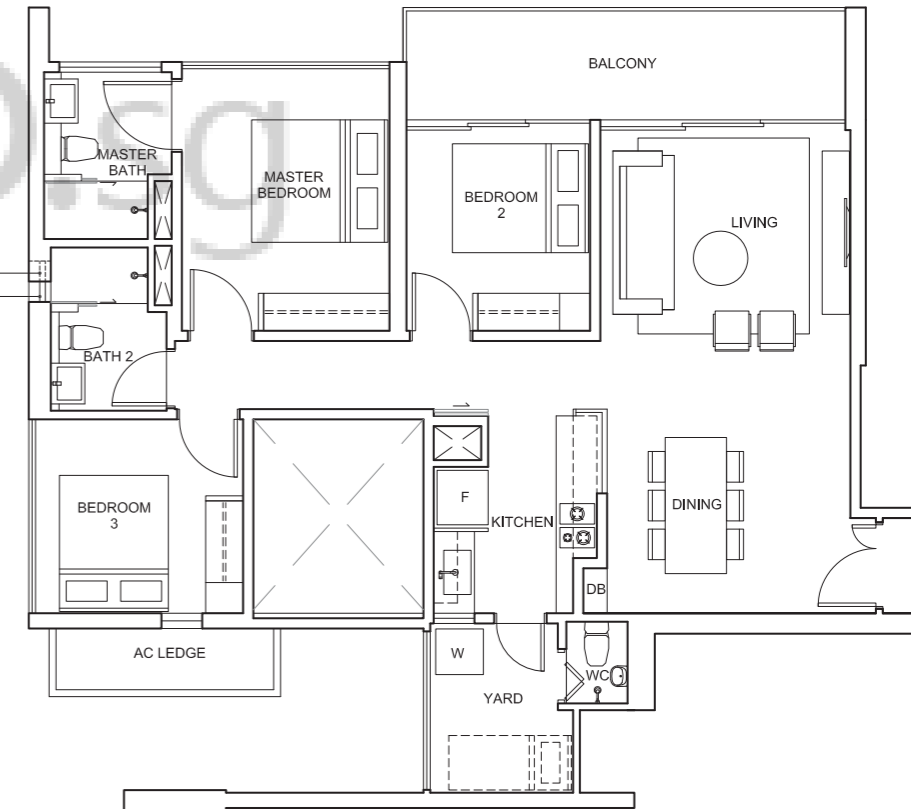
3-BEDROOM SUITE

TYPE C2a
 107 sq.m. / 1152 sq.ft
 BLOCK 8
 #05-09* TO #08-09*
 #12-08 TO #15-08
 * MIRROR



TYPE C2
 107 sq.m. / 1152 sq.ft
 BLOCK 8
 #03-08 TO #11-08, #16-08
 #03-09* TO #04-09*
 #09-09* TO #16-09*
 * MIRROR

WINDOW POSITION 2 FOR UNITS AT 5TH, 6TH, 9TH, 10TH, 13TH & 14TH STOREY ONLY
 WINDOW POSITION 1 FOR UNITS AT 3RD, 4TH, 7TH, 8TH, 11TH, 12TH, 15TH & 16TH STOREY ONLY

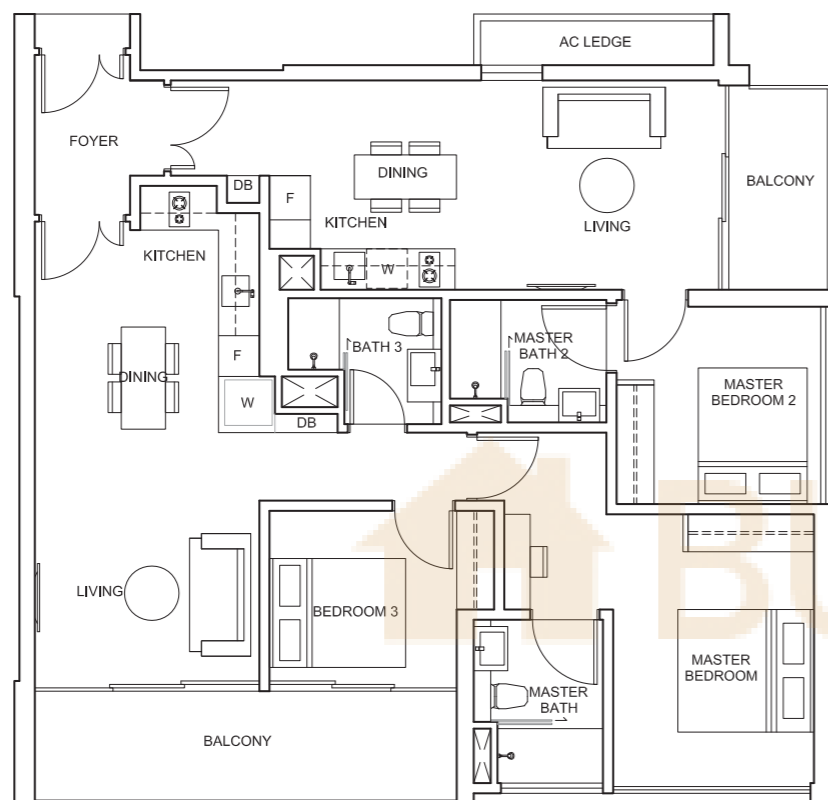


PLEASE NOTE THAT THE ROOF COVERING FOR THE PRIVATE TERRACE OF THE LEVEL 2 UNITS CAN BE SEEN FROM THE LEVEL 3 UNITS. PLEASE REFER TO THE APPROVED PLANS FOR THE ROOF COVERING DESIGN. RELEVANT AUTHORITIES' APPROVAL WILL BE SOUGHT FOR WINDOW POSITION 2.

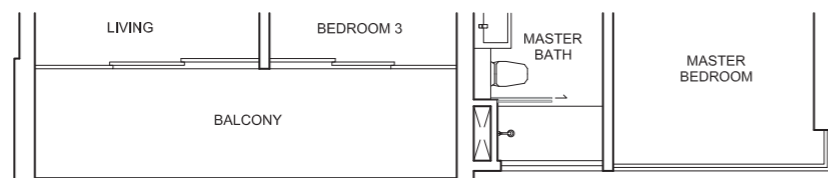
3-BEDROOM DUAL-KEY SUITE

4-BEDROOM SUITE

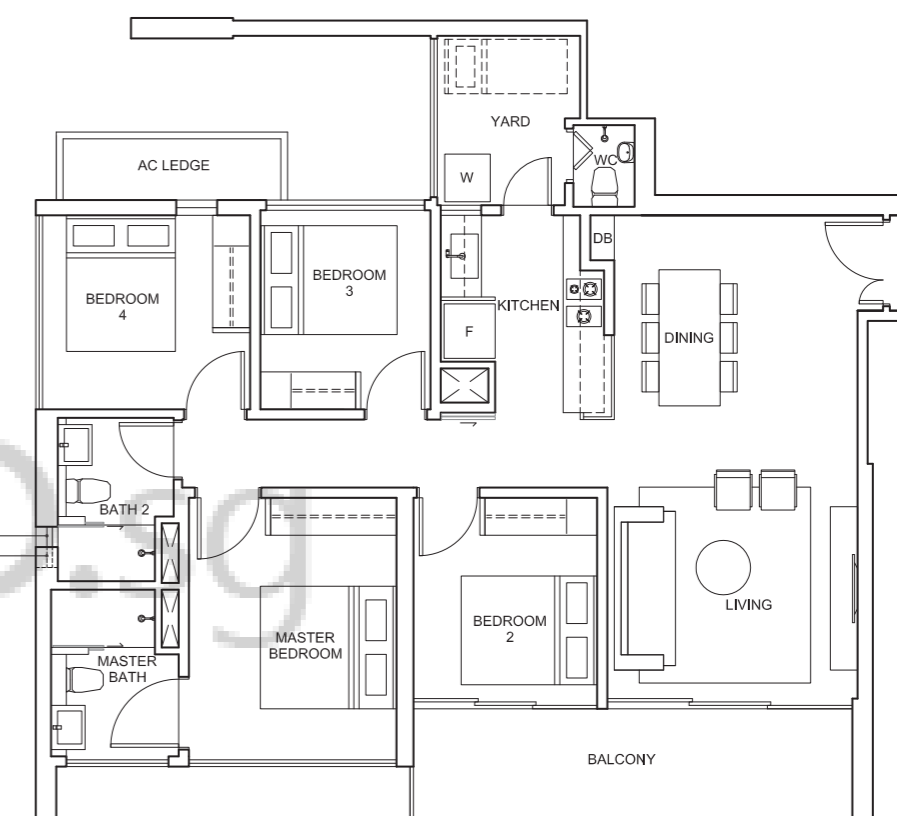
TYPE CDK
 128 sq.m. / 1378 sq.ft
 BLOCK 12
 #03-19 TO #04-19
 #09-19 TO #16-19



TYPE CDKa
 128 sq.m. / 1378 sq.ft
 BLOCK 12
 #05-19 TO #08-19



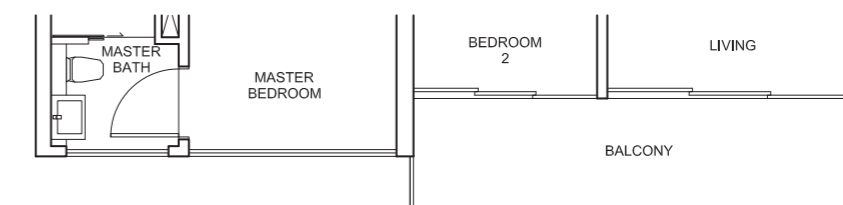
TYPE D1
 115 sq.m. / 1238 sq.ft
 BLOCK 6
 #03-01* TO #11-01*
 #16-01*
 #03-02 TO #04-02
 #09-02 TO #16-02
 * MIRROR



WINDOW POSITION 1 FOR
 UNITS AT 5TH, 6TH, 9TH, 10TH,
 13TH & 14TH STOREY ONLY

WINDOW POSITION 2 FOR
 UNITS AT 3RD, 4TH, 7TH, 8TH,
 11TH, 12TH, 15TH & 16TH
 STOREY ONLY

TYPE D1a
 115 sq.m. / 1238 sq.ft
 BLOCK 6
 #05-02 TO #08-02
 #12-01* TO #15-01*
 * MIRROR



PLEASE NOTE THAT THE ROOF COVERING FOR THE PRIVATE TERRACE OF THE LEVEL 2 UNITS CAN BE SEEN FROM THE LEVEL 3 UNITS. PLEASE REFER TO THE APPROVED PLANS FOR THE ROOF COVERING DESIGN.

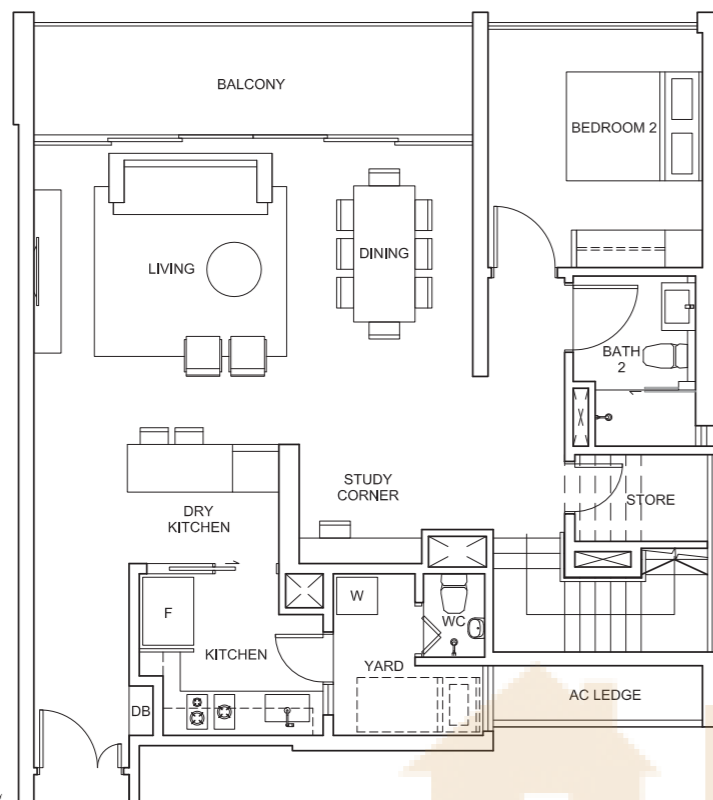


PLEASE NOTE THAT THE ROOF COVERING FOR THE PRIVATE TERRACE OF THE LEVEL 2 UNITS CAN BE SEEN FROM THE LEVEL 3 UNITS. PLEASE REFER TO THE APPROVED PLANS FOR THE ROOF COVERING DESIGN. RELEVANT AUTHORITIES' APPROVAL WILL BE SOUGHT FOR WINDOW POSITION 2.

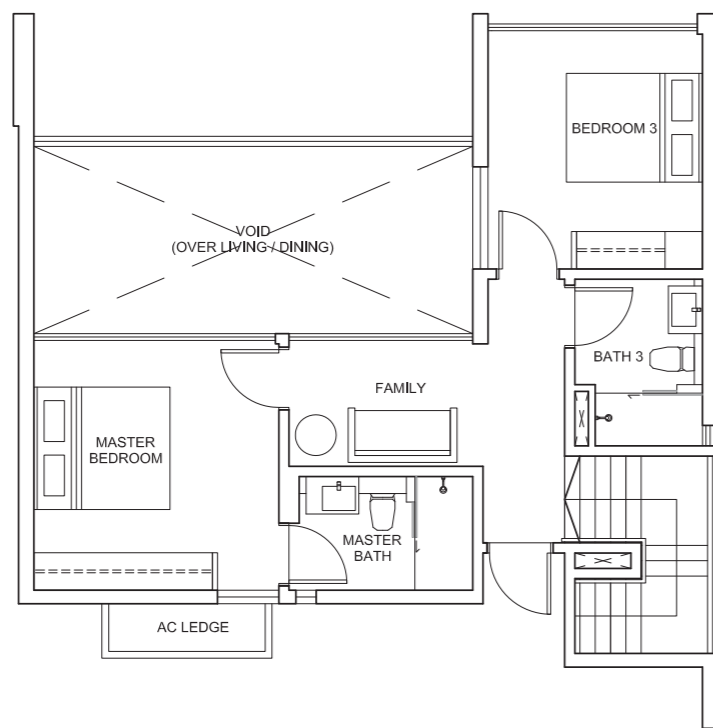
PENTHOUSE SUITE

(3-BEDROOM+FAMILY+STUDY)

TYPE PH1
181 sq.m. / 1948 sq.ft.
(including 22 sq.m/237 sq.ft. void)
BLOCK 12
#17-18
BLOCK 14
#17-25, #17-26*
* MIRROR



LOWER LEVEL



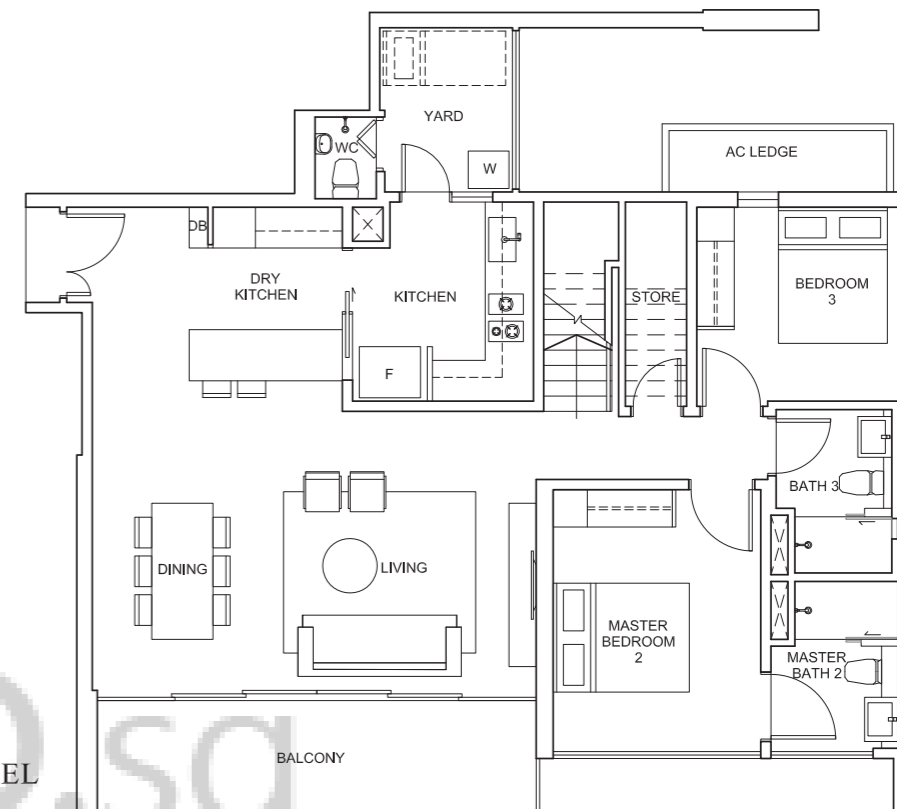
UPPER LEVEL



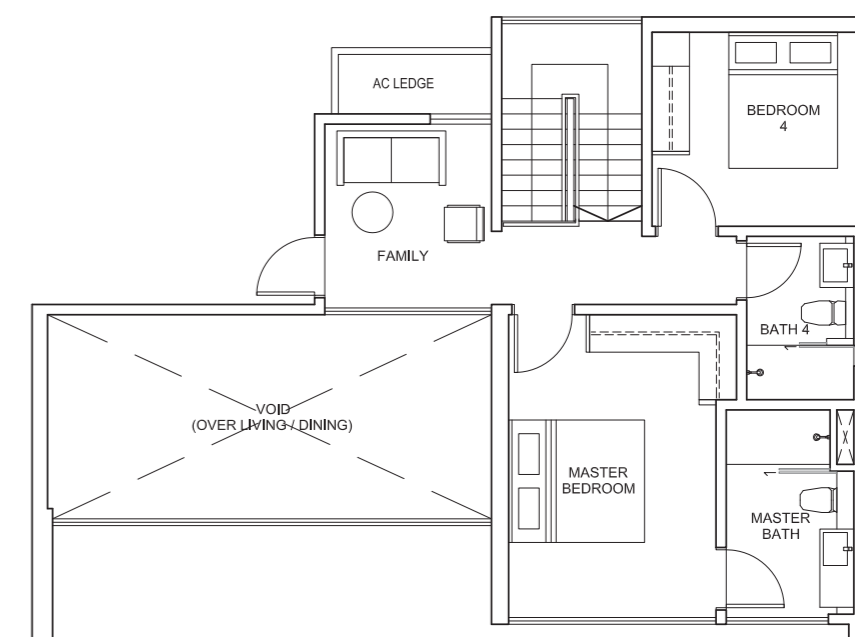
PENTHOUSE SUITE

(4-BEDROOM+FAMILY)

TYPE PH3
193 sq.m. / 2077 sq.ft.
(including 25 sq.m/269 sq.ft. void)
BLOCK 6
#17-01, #17-02*
BLOCK 8
#17-08, #17-09*
* MIRROR



LOWER LEVEL



UPPER LEVEL

