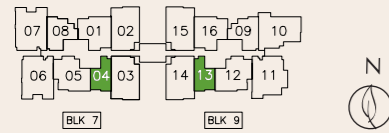
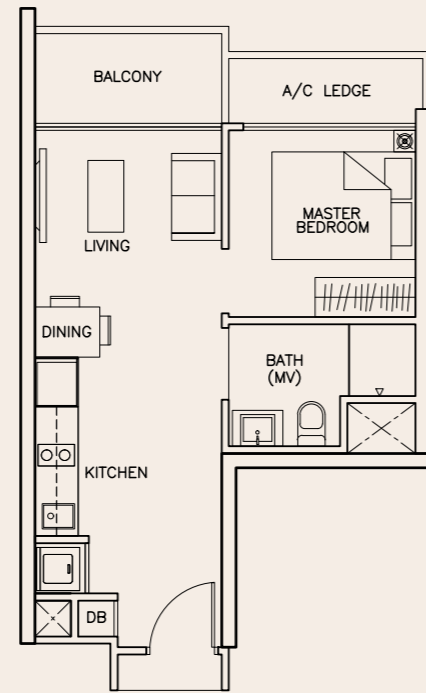


# Floor Plan

## 1-Bedroom

### Type A1

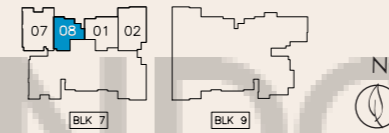
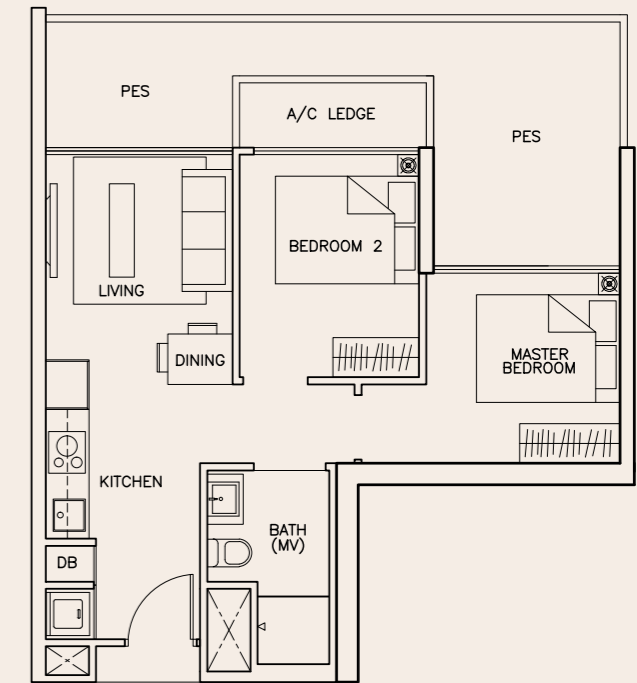
#02-04 to #16-04  
 #02-13 to #16-13 (Mirror Units)  
 39 sqm



## 2-Bedroom

### Type B1(P)

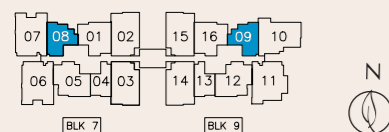
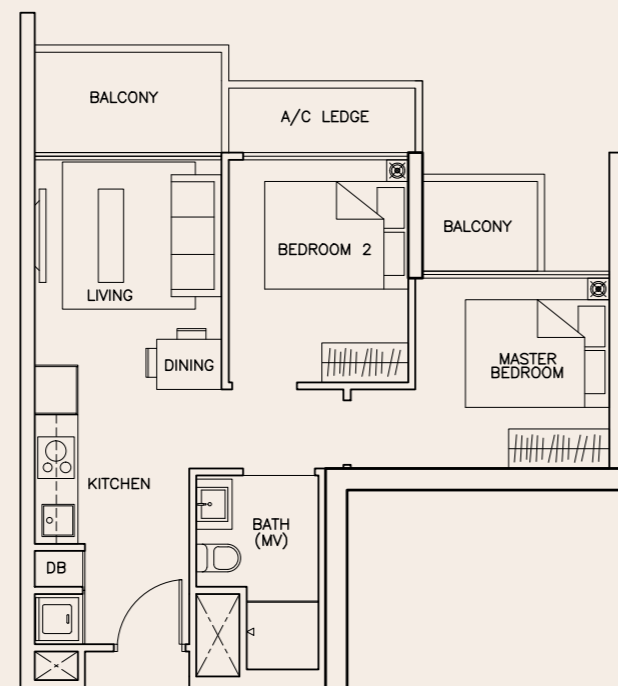
#01-08  
 63 sqm



## 2-Bedroom

### Type B1

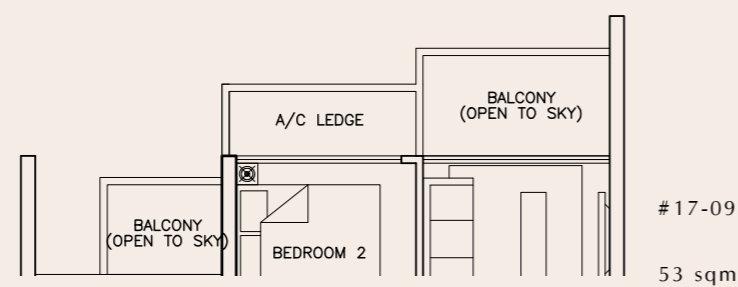
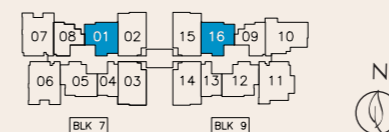
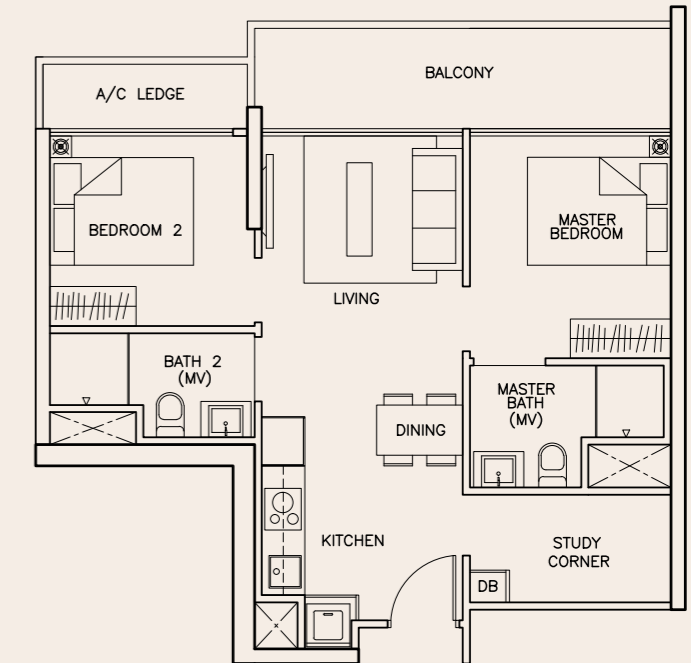
#02-08 to #16-08  
 #02-09 to #16-09 (Mirror Units)  
 53 sqm



## 2-Bedroom Premium

### Type B2

#02-01 to #16-01  
 #02-16 to #16-16 (Mirror Units)  
 65 sqm



Area includes A/C ledge, balcony, PES, roof terrace and void (where applicable). Orientation and facings will differ depending on the unit you are purchasing (please refer to the key plan). All plans are not to scale and subject to changes as may be required by relevant authorities. All floor areas are estimated and subjected to final survey.

Area includes A/C ledge, balcony, PES, roof terrace and void (where applicable). Orientation and facings will differ depending on the unit you are purchasing (please refer to the key plan). All plans are not to scale and subject to changes as may be required by relevant authorities. All floor areas are estimated and subjected to final survey.

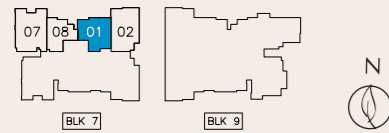
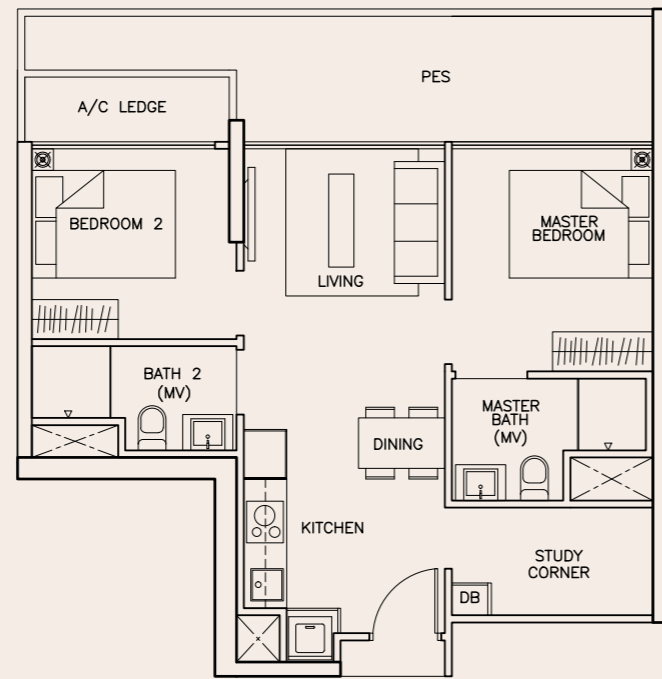
# Floor Plan

## 2-Bedroom Premium

### Type B2(P)

#01-01

69 sqm



## 3-Bedroom

### Type C2

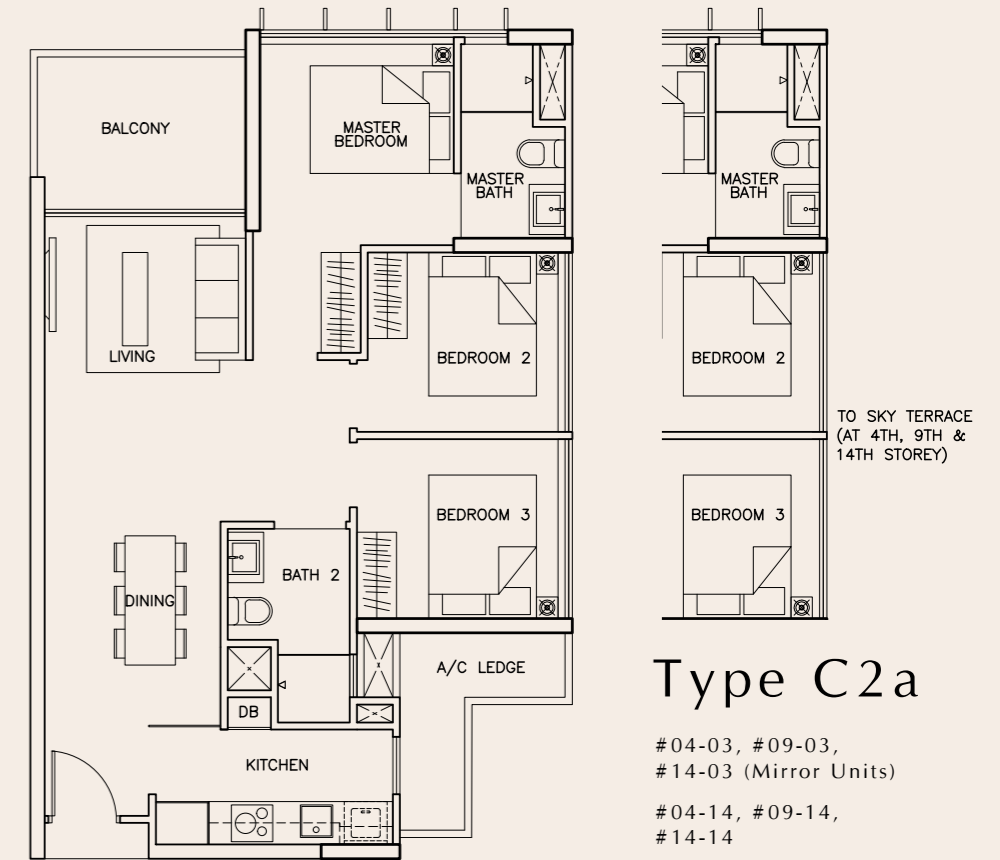
#02-02 to #16-02

#02-03, #03-03, #05-03 to #08-03,  
#10-03 to #13-03, #15-03, #16-03  
(Mirror Units)

#02-14, #03-14, #05-14 to #08-14,  
#10-14 to #13-14, #15-14, #16-14

#02-15 to #16-15 (Mirror Units)

80 sqm

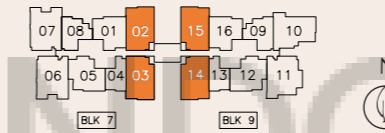


### Type C2a

#04-03, #09-03,  
#14-03 (Mirror Units)

#04-14, #09-14,  
#14-14

79 sqm



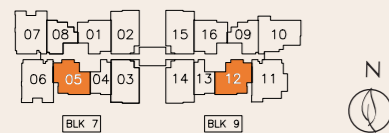
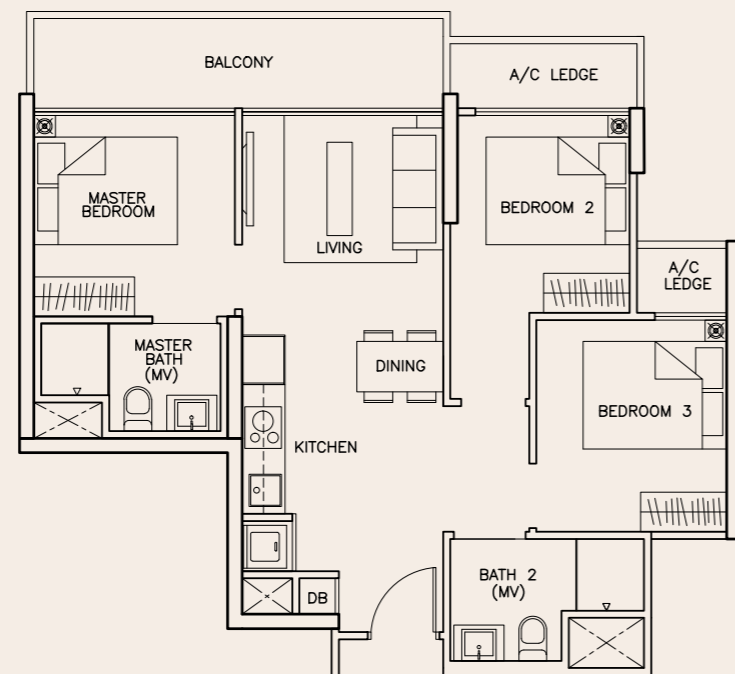
## 3-Bedroom

### Type C1

#02-05 to #16-05

#02-12 to #16-12 (Mirror Units)

71 sqm

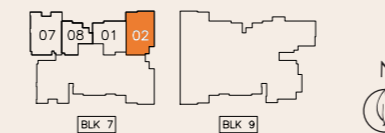
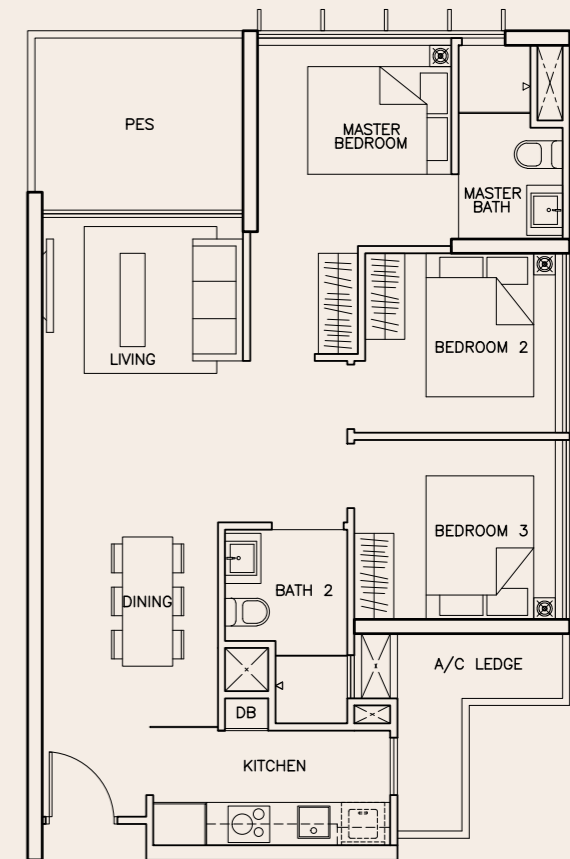


## 3-Bedroom

### Type C2(P)

#01-02

80 sqm



Area includes A/C ledge, balcony, PES, roof terrace and void (where applicable). Orientation and facings will differ depending on the unit you are purchasing (please refer to the key plan). All plans are not to scale and subject to changes as may be required by relevant authorities. All floor areas are estimated and subjected to final survey.

Area includes A/C ledge, balcony, PES, roof terrace and void (where applicable). Orientation and facings will differ depending on the unit you are purchasing (please refer to the key plan). All plans are not to scale and subject to changes as may be required by relevant authorities. All floor areas are estimated and subjected to final survey.

# Floor Plan

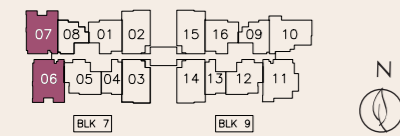
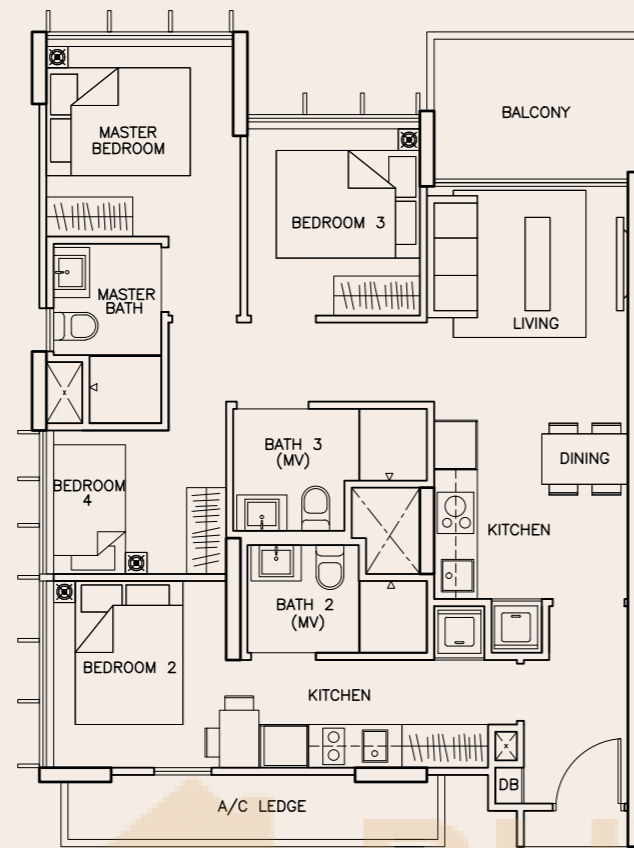
## 4-Bedroom

### Type D1-DK

#02-06 to #16-06 (Mirror Units)

#02-07 to #16-07

88 sqm

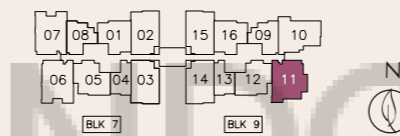
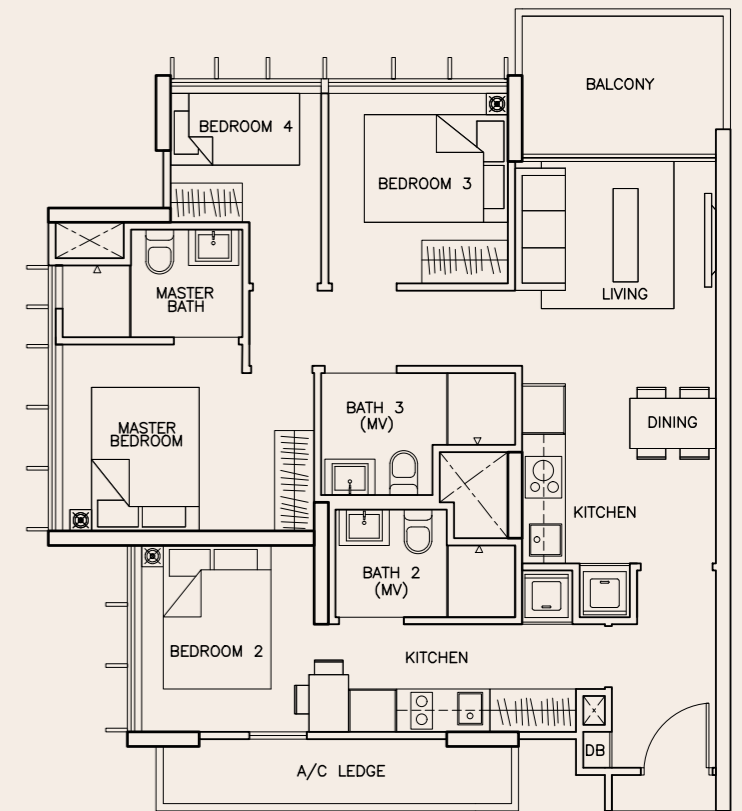


## 4-Bedroom Superior

### Type D2-DK

#02-11 to #16-11

88 sqm

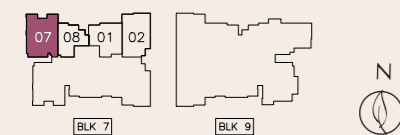
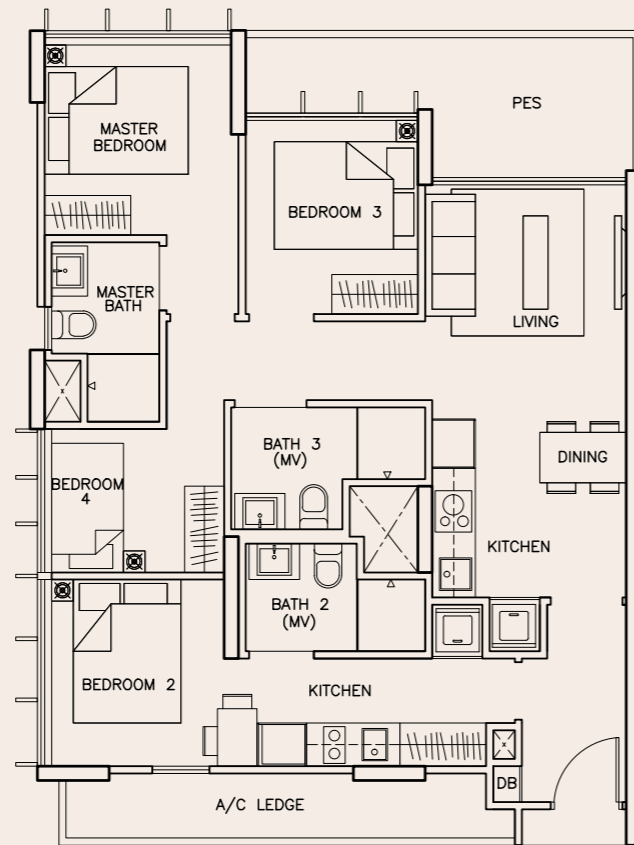


## 4-Bedroom

### Type D1-DK(P)

#01-07

92 sqm

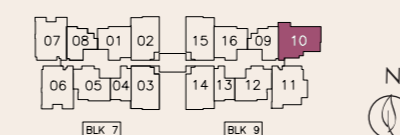
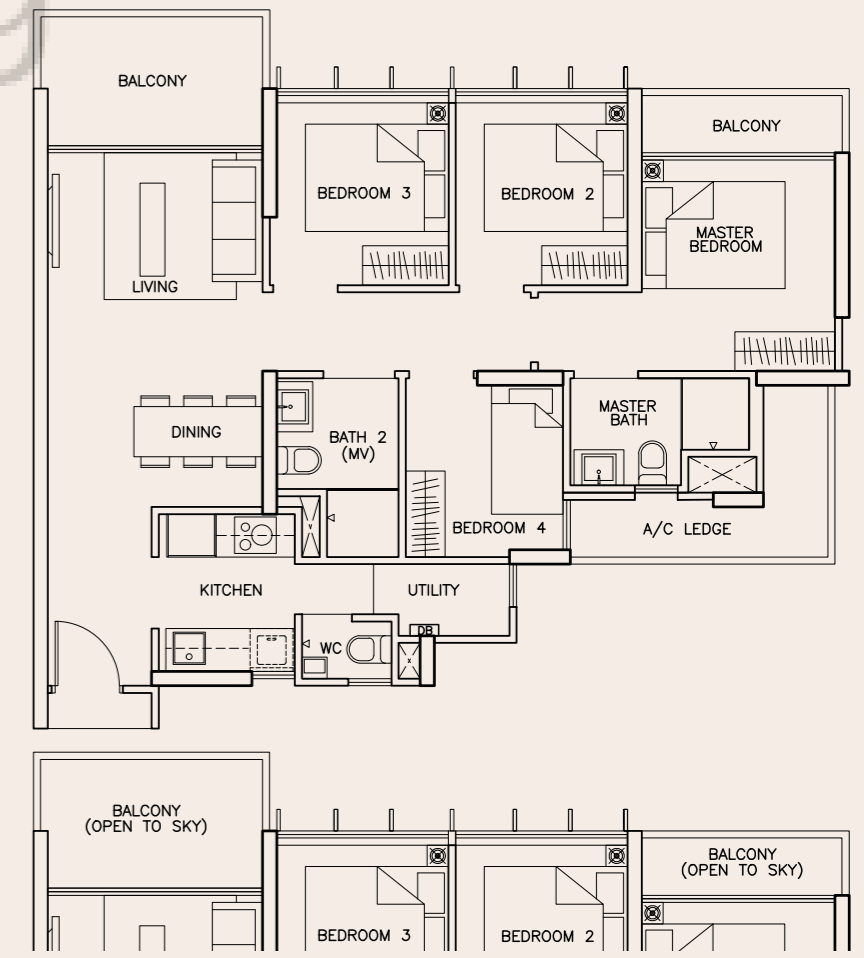


## 4-Bedroom Superior

### Type D3

#02-10 to #16-10

88 sqm



#17-10

88 sqm

Area includes A/C ledge, balcony, PES, roof terrace and void (where applicable). Orientation and facings will differ depending on the unit you are purchasing (please refer to the key plan). All plans are not to scale and subject to changes as may be required by relevant authorities. All floor areas are estimated and subjected to final survey.

Area includes A/C ledge, balcony, PES, roof terrace and void (where applicable). Orientation and facings will differ depending on the unit you are purchasing (please refer to the key plan). All plans are not to scale and subject to changes as may be required by relevant authorities. All floor areas are estimated and subjected to final survey.

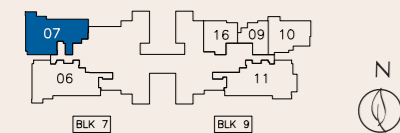
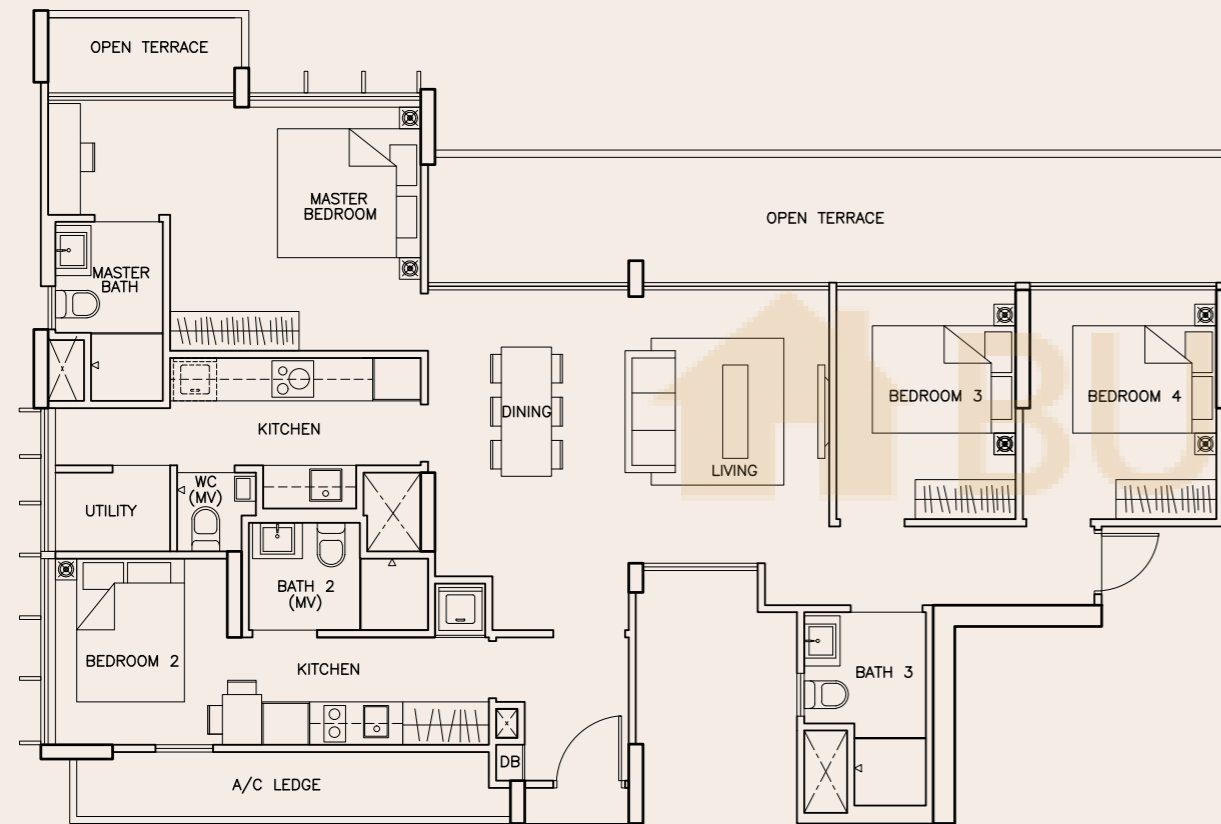
# Floor Plan

## Penthouse

### Type PH1-DK

#17-07

137 sqm



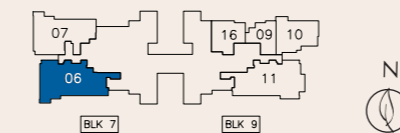
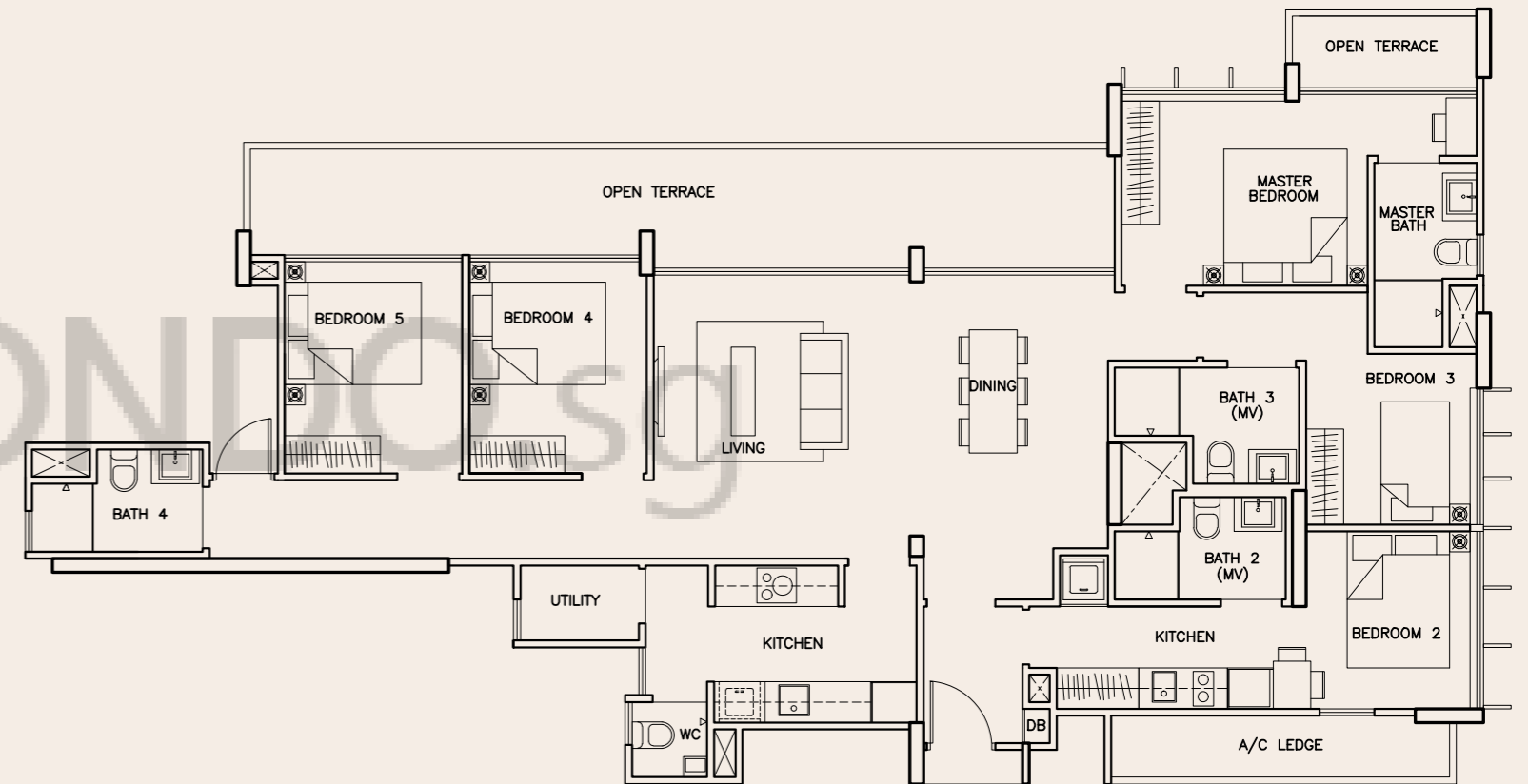
Area includes A/C ledge, balcony, PES, roof terrace and void (where applicable). Orientation and facings will differ depending on the unit you are purchasing (please refer to the key plan). All plans are not to scale and subject to changes as may be required by relevant authorities. All floor areas are estimated and subjected to final survey.

## Penthouse

### Type PH2-DK

#17-06

158 sqm



Area includes A/C ledge, balcony, PES, roof terrace and void (where applicable). Orientation and facings will differ depending on the unit you are purchasing (please refer to the key plan). All plans are not to scale and subject to changes as may be required by relevant authorities. All floor areas are estimated and subjected to final survey.

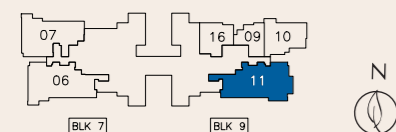
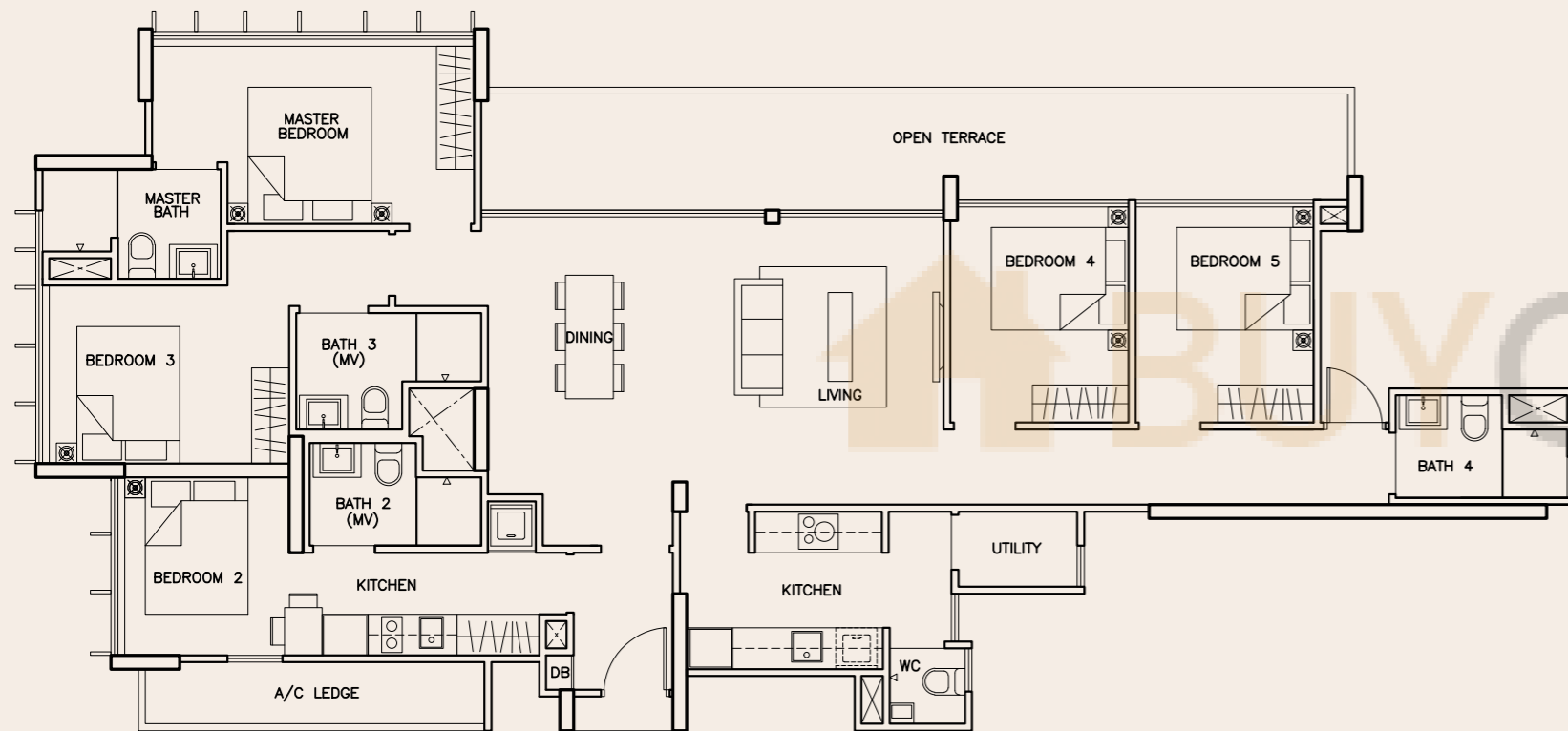
# Floor Plan

## Penthouse

### Type PH3-DK

#17-11

159 sqm



# Specifications

## 1) FOUNDATION

Reinforced concrete bored piles and/or Reinforced concrete footings and/or Driven piles.

## 2) SUPERSTRUCTURE

Reinforced concrete and/or Pre-Stress concrete and/or Precast reinforced concrete and/or Structural steel to Engineer's design and specification

## 3) WALLS

3.1) External wall: Reinforced concrete and/or light weight concrete panel and/or masonry walls and/or curtain wall system

3.2) Internal wall: Reinforced concrete wall and/or light weight concrete panel / blocks and/or pre-cast reinforced concrete wall and/or masonry walls and/or drywall partition system.

## 4) ROOF

Reinforced concrete roof and/or metal roof with appropriate insulation and roofing system.

## 5) CEILING

### 5.1) Apartment Unit

i) Living / Dining / Bedrooms / Hallway to Bedrooms / Balcony / Study Corner (where applicable)

- Skim coat and/or plaster ceiling board and/or bulkhead to designated area with paint finish (where applicable)

ii) Kitchen / Master and Common Bathroom / WC

- Plaster ceiling board /or bulkhead to designated area (where applicable)

### 5.2) Common Areas

i) Lift Lobbies / Corridors / Gymnasium / Changing Room

- Plaster ceiling board and/or skim coat and/or bulkhead to designated area with paint finish (where applicable)

ii) Car park / Ramp / Staircase and Landing

- Skim coat and/or bulkhead to designated area with paint finish (where applicable)

## 6) FINISHES

### a) Wall

#### i) Apartment Unit

- Living / Dining / Bedrooms / Hallway to Bedrooms / Study Corner (where applicable)
- Cement and sand plaster and/or skim coat with paint finish and on exposed surface only

- Master / Common Bathrooms
- Tiles up to false ceiling height and on exposed surface only

- Kitchen
- Tiles and/or cement and sand plaster finish and/or skim coat with paint finish up to false ceiling height only

- WC (where applicable)
- Tiles and/or cement and sand plaster finish and/or skim coat with paint finish up to false ceiling height only

- Private Enclosed Space (PES), Balcony, Planter and Open Terrace (where applicable)
- Cement and sand plaster and/or skim coat with paint finish

- Utility room (where applicable)
- Cement and sand plaster and/or skim coat with paint finish

#### ii) Common Area

##### Internal Wall

- Main Lift lobby (Basement Mezzanine and 1st storey)
- Stone and/or Tiles and/or cement and sand plaster and/or skim coat with paint finish

- Typical Floor Lift lobby (2nd to 17th storey)
- Cement and sand plaster and/or skim coat with paint finish

- Common Corridor / Staircase and Carpark
- Cement and sand plaster and/or skim coat with paint finish

##### External Wall

- All external walls including Open Terrace, Balcony and Private Enclosed Space (PES)
- Cement and sand plaster with spray textured and/or paint finishes

## b) Floor

### i) Apartment Unit

- Living / Dining / Kitchen / Hallway to Bedrooms / Study Corner (where applicable)
- Compressed marble tiles with skirting
- Master / Common Bathrooms / WC
- Imported tiles

- Bedrooms (except dual key units – studio bedrooms)
- Timber and/or Engineered timber-strips with skirting

- Studio bedroom for Dual Keys units
- Compressed marble tiles with skirting

- Private Enclosed Space (PES), Balcony, Open Terrace (where applicable)
- Imported tiles and/or Engineered timber-strips and/or cement and sand screed

- Utility room (where applicable)
- Imported tiles with skirting
- A/C Ledge
- Cement and sand screed

### ii) Common Area

- Main Lift lobby (Basement, Mezzanine and 1st storey)
- Granite and/or Stone and/or Tiles
- Typical Floor Lift lobby (2nd to 17th storey)
- Imported tiles

- Common Corridor
- Imported tiles and/or cement and sand screed
- Staircase
- Cement and sand screed

## 7) WINDOWS

All windows of the units shall be powder coated finish aluminum frame with tinted and/or clear glass and/or frosted glass where appropriate

## 8) DOORS

- Main Entrance
- Approved fire-rated timber door
- Bedrooms / Bathrooms
- Hollow core timber swing door and/or sliding door

- Kitchen
- Timber and/or aluminum framed / frameless sliding door and/or swing door and/or slide and fold door to Architect's design (where applicable)

- WC
- Swing door and/or slide and fold door to Architect's design (where applicable)

- Balcony / Open Terrace / Private Enclosed Space (PES)
- Aluminum framed sliding and/or swing door and/or slide and fold door

## 9) SANITARY FITTINGS

### 9.1) Master Baths

- One shower compartment complete with shower mixer set and shower set
- One water closet
- One vanity cabinet complete with countertop basin and one basin mixer

- One mirror
- One towel rail
- One toilet paper holder

### 9.2) Common Baths (where applicable)

- One shower compartment complete with shower mixer and shower set
- One water closet
- One vanity cabinet complete with countertop basin and one basin mixer

- One mirror
- One towel rail
- One toilet paper holder

### 9.3) WC (where applicable)

- One water closet
- One wash basin complete with tap
- One shower set
- One toilet paper holder
- One mirror

### 9.4) Kitchen

- One stainless steel sink with mixer

### 9.5) Private Enclosed Space (PES) and Open Terrace (where applicable)

- One cold water bib tap