

149

# Heritage View

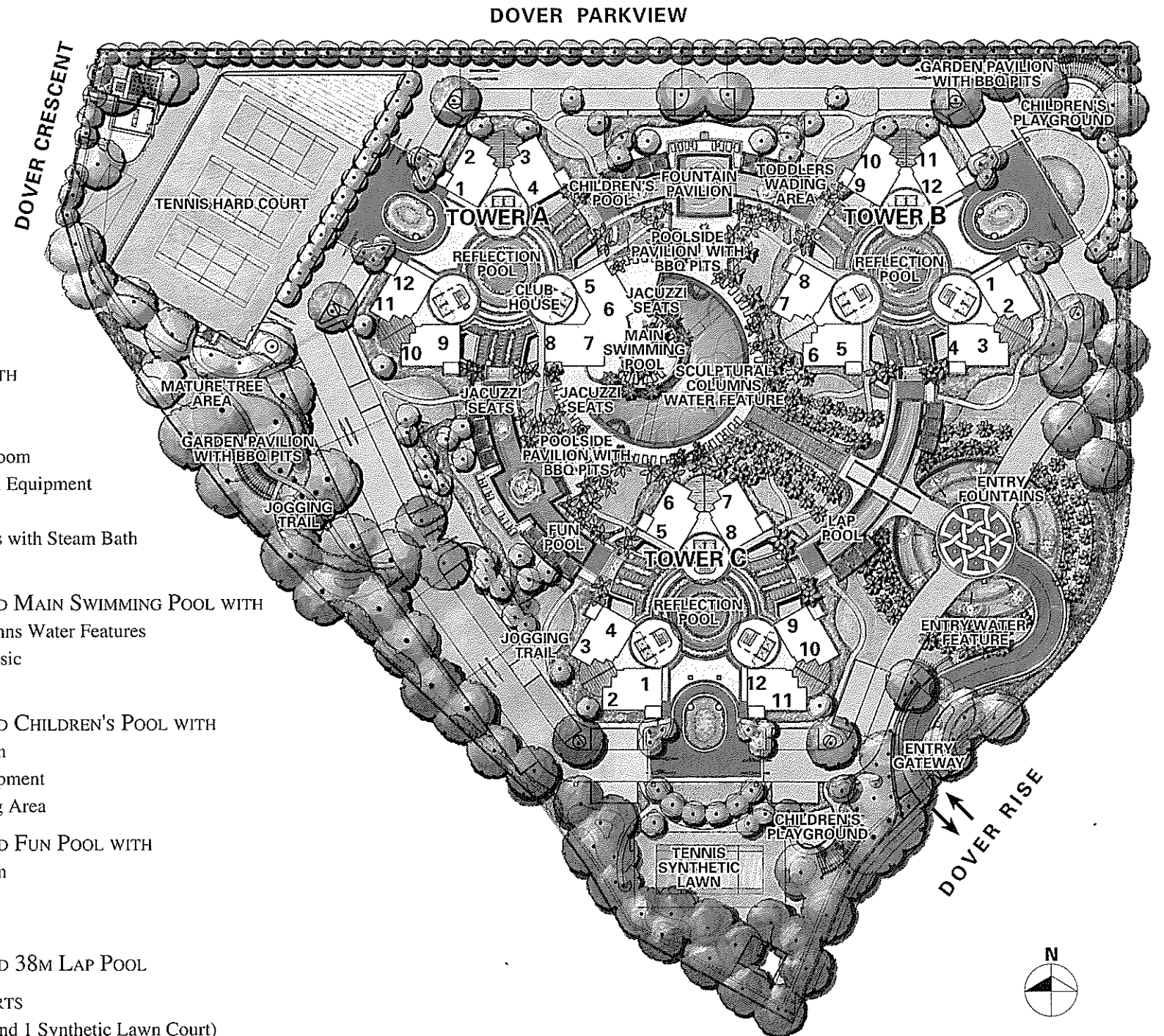
LUXURIOUS CONDOMINIUM

• F L O O R P L A N S •

• EASY INSTALMENTS • NO RESTRICTION TO FOREIGNERS

# SITE PLAN

## RECREATIONAL FACILITIES



- CLUBHOUSE WITH
  - Reading Corner
  - \* Karaoke Room
  - \* Home Theater Room
  - Gymnasium with Equipment
  - Games Room
  - Changing Rooms with Steam Bath
  - Function Hall
- OZONE TREATED MAIN SWIMMING POOL WITH
  - Sculptural Columns Water Features
  - Under Water Music
  - Jacuzzi Seats
- OZONE TREATED CHILDREN'S POOL WITH
  - Fountain Pavilion
  - Water Play Equipment
  - Toddlers Wading Area
- OZONE TREATED FUN POOL WITH
  - Fountain Pavilion
  - Bubble Mat
  - Jacuzzi Seats
- OZONE TREATED 38M LAP POOL
- 4 TENNIS COURTS
  - (3 Hard Courts and 1 Synthetic Lawn Court)
- 3 GARDEN PAVILIONS WITH BARBECUE PITS
- 2 POOLSIDE PAVILIONS WITH BARBECUE PITS

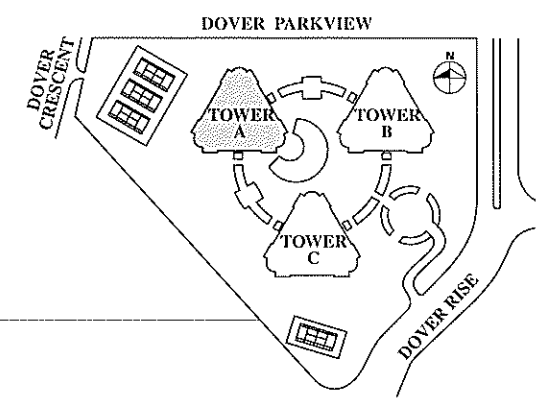
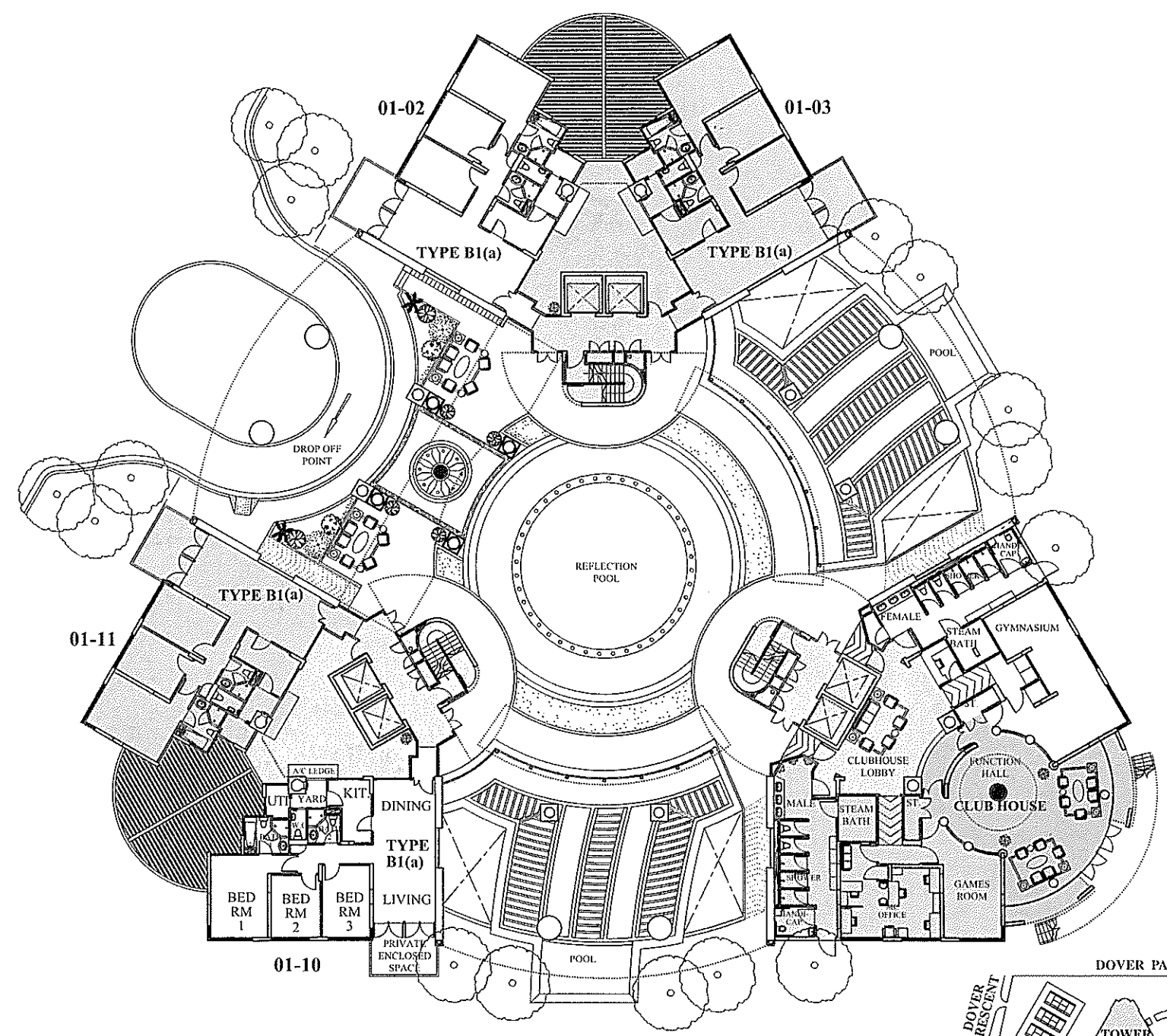
\* subject to approval as may be approved by the relevant authorities.

The above plan is subject to change as may be approved by relevant authorities.

GRAPHIC

# TOWER A

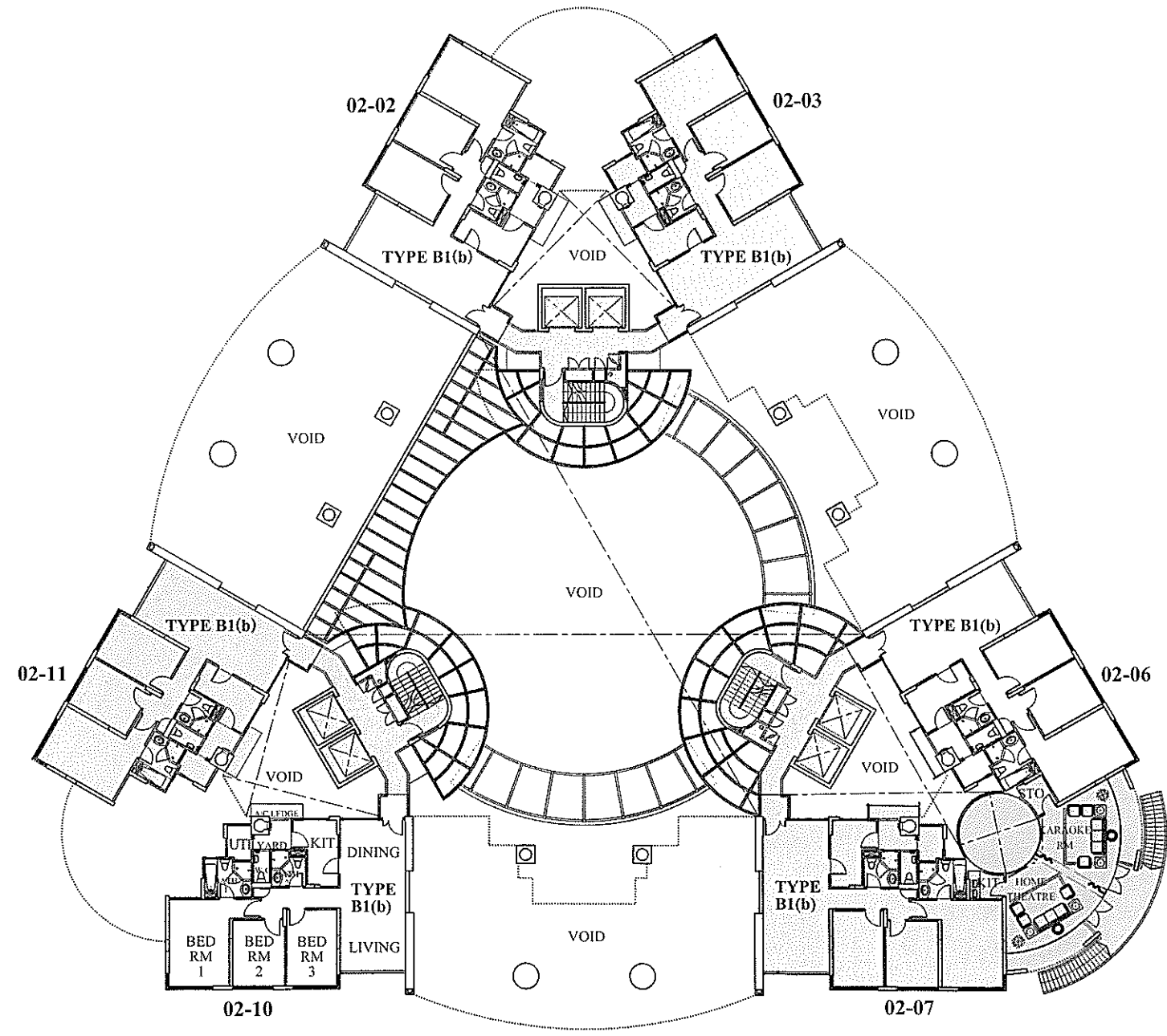
## 1st STOREY PLAN



The above plan is subject to change as may be approved by the relevant authorities.

# TOWER A

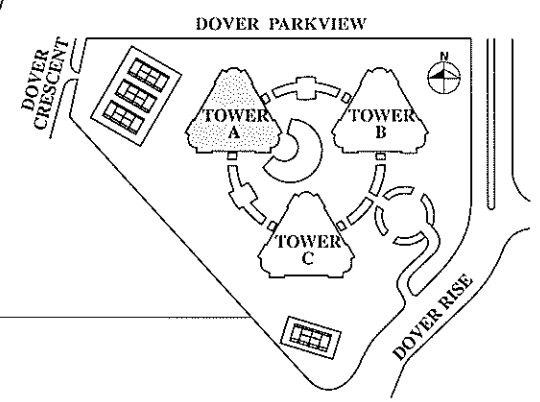
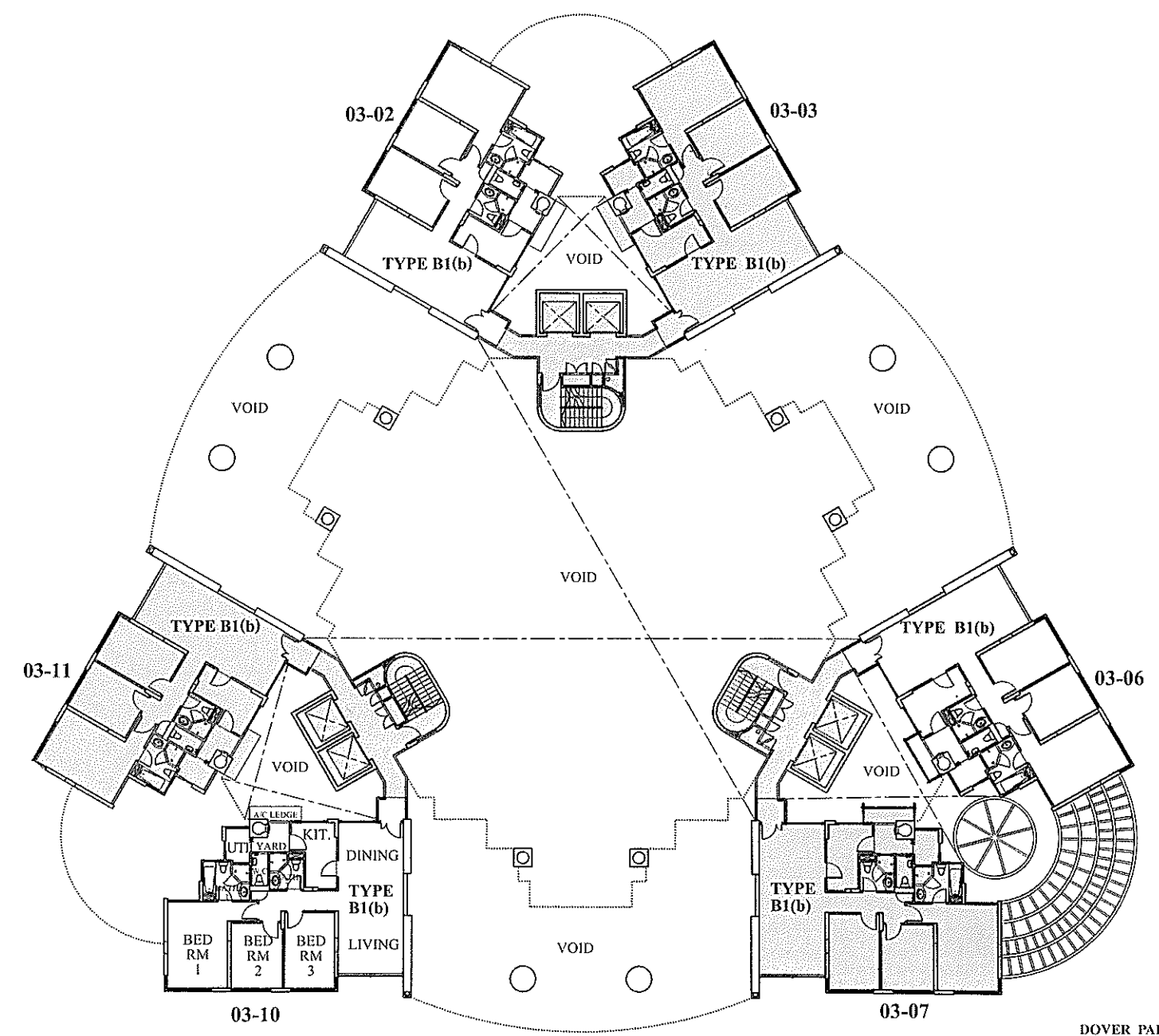
## 2nd STOREY PLAN



The above plan is subject to change as may be approved by the relevant authorities.

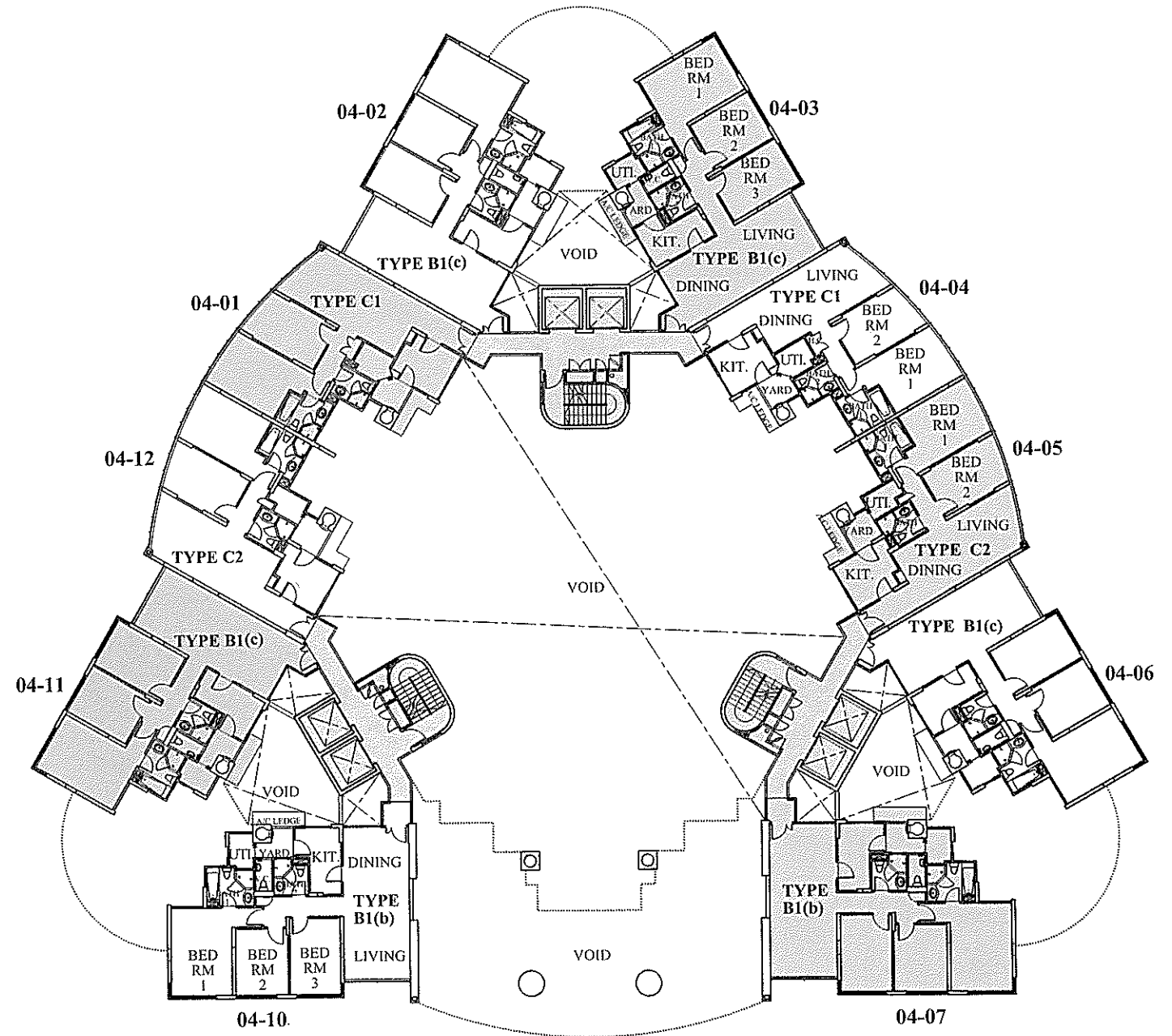
# TOWER A

## 3rd STOREY PLAN



# TOWER A

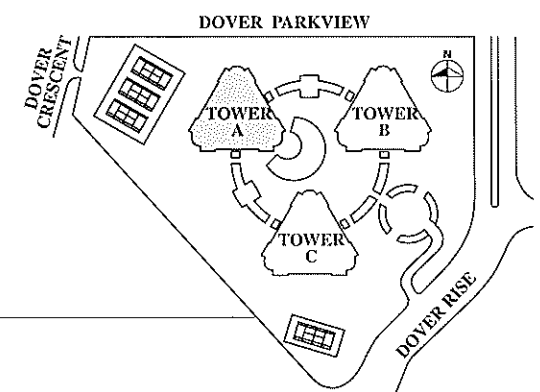
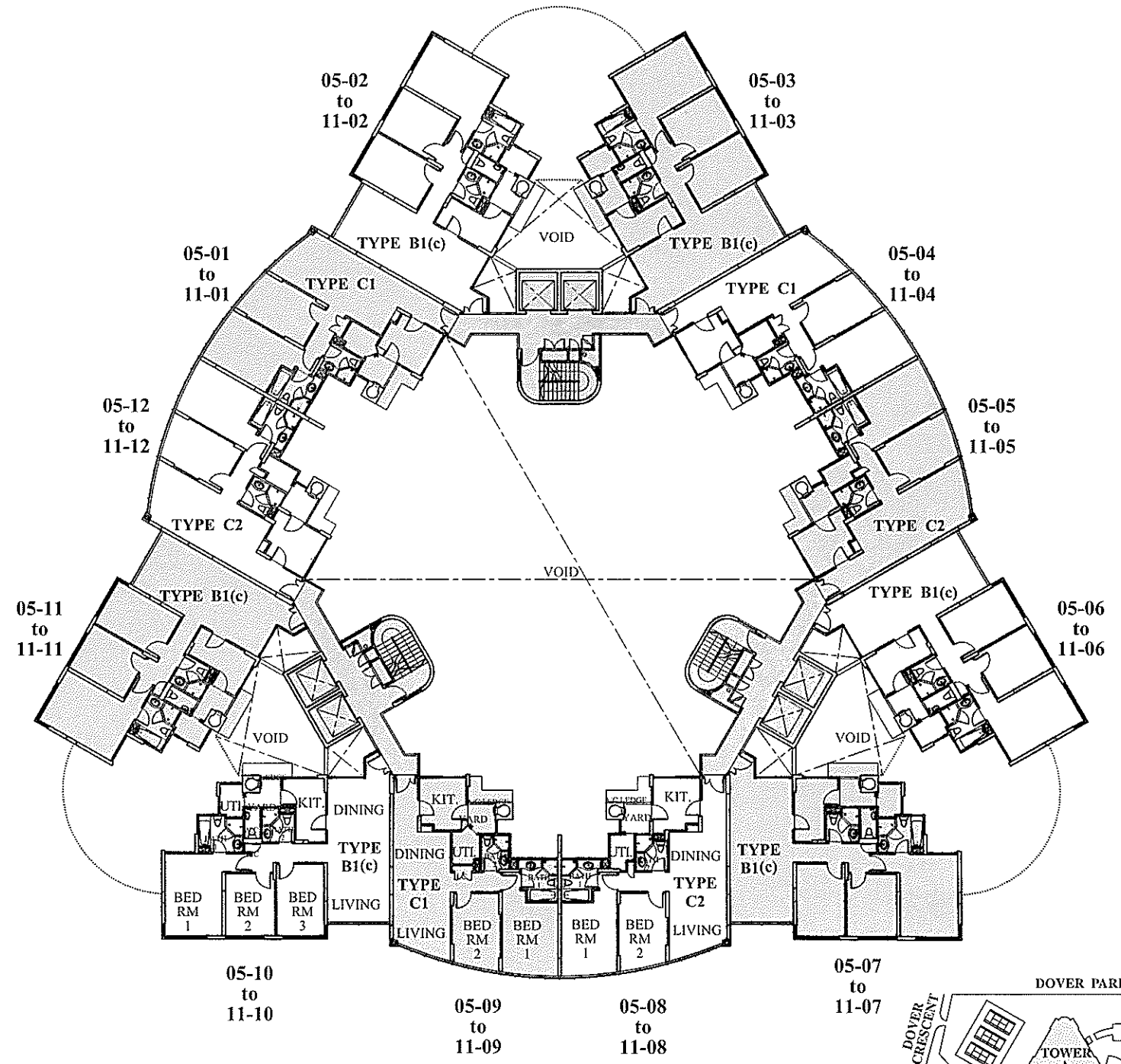
## 4th STOREY PLAN



The above plan is subject to change as may be approved by the relevant authorities.

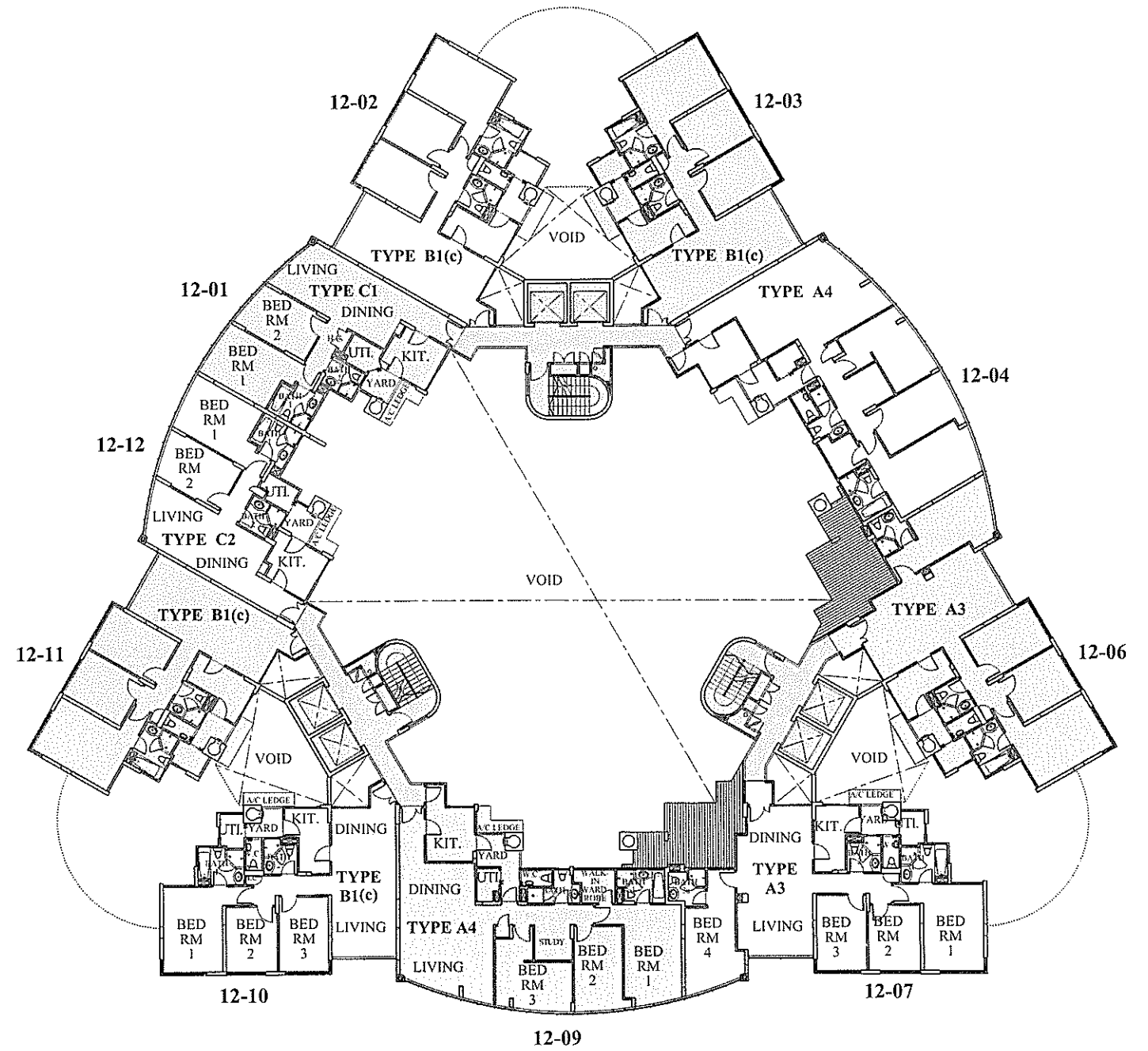
# TOWER A

## 5-11th STOREY PLAN



# TOWER A

## 12th STOREY PLAN

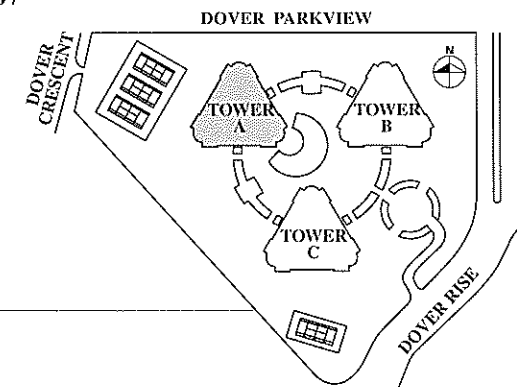
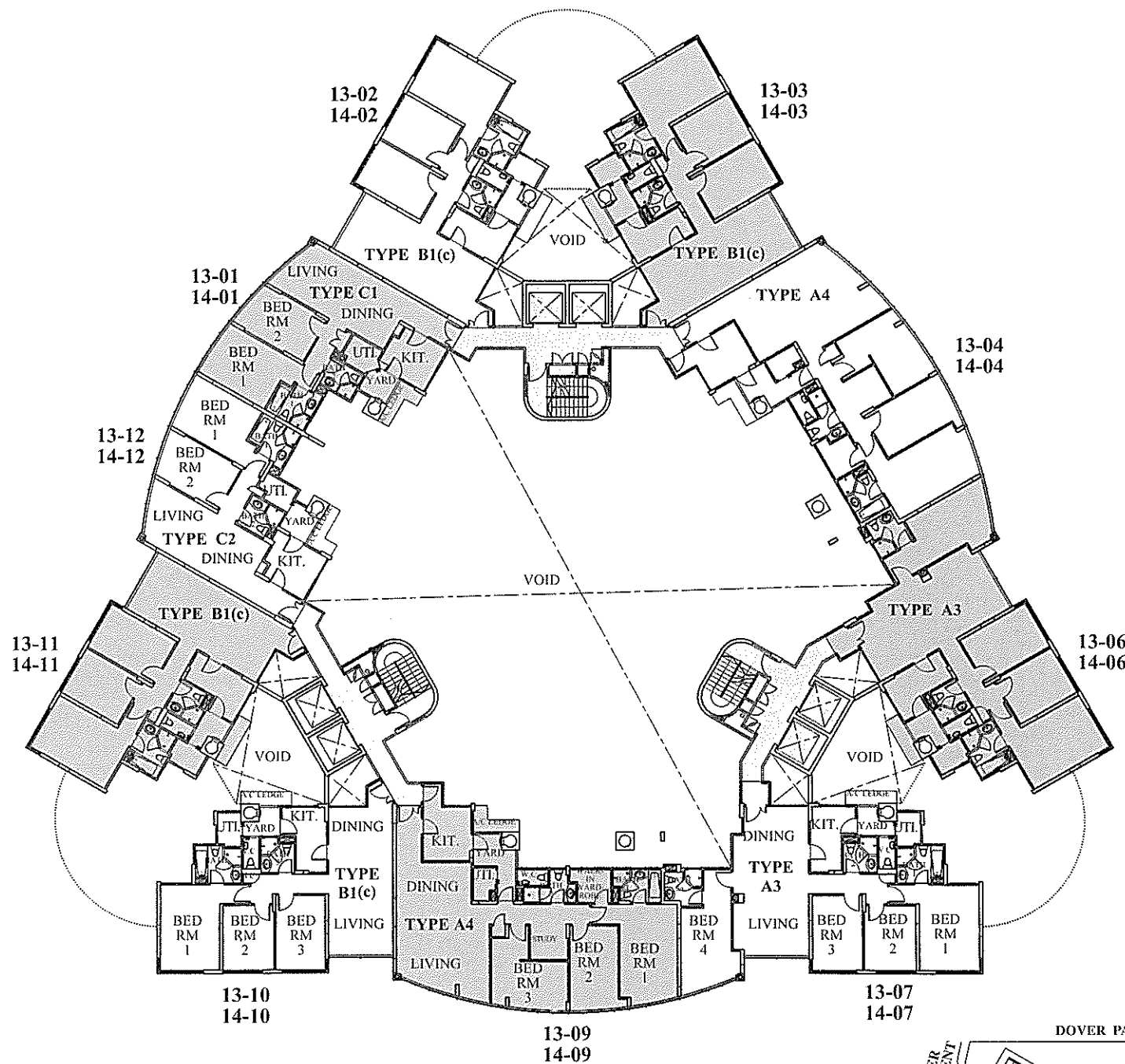


The above plan is subject to change as may be approved by the relevant authorities.



# TOWER A

## 13-14th STOREY PLAN

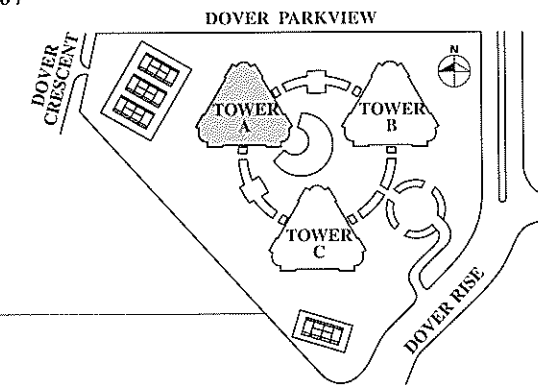
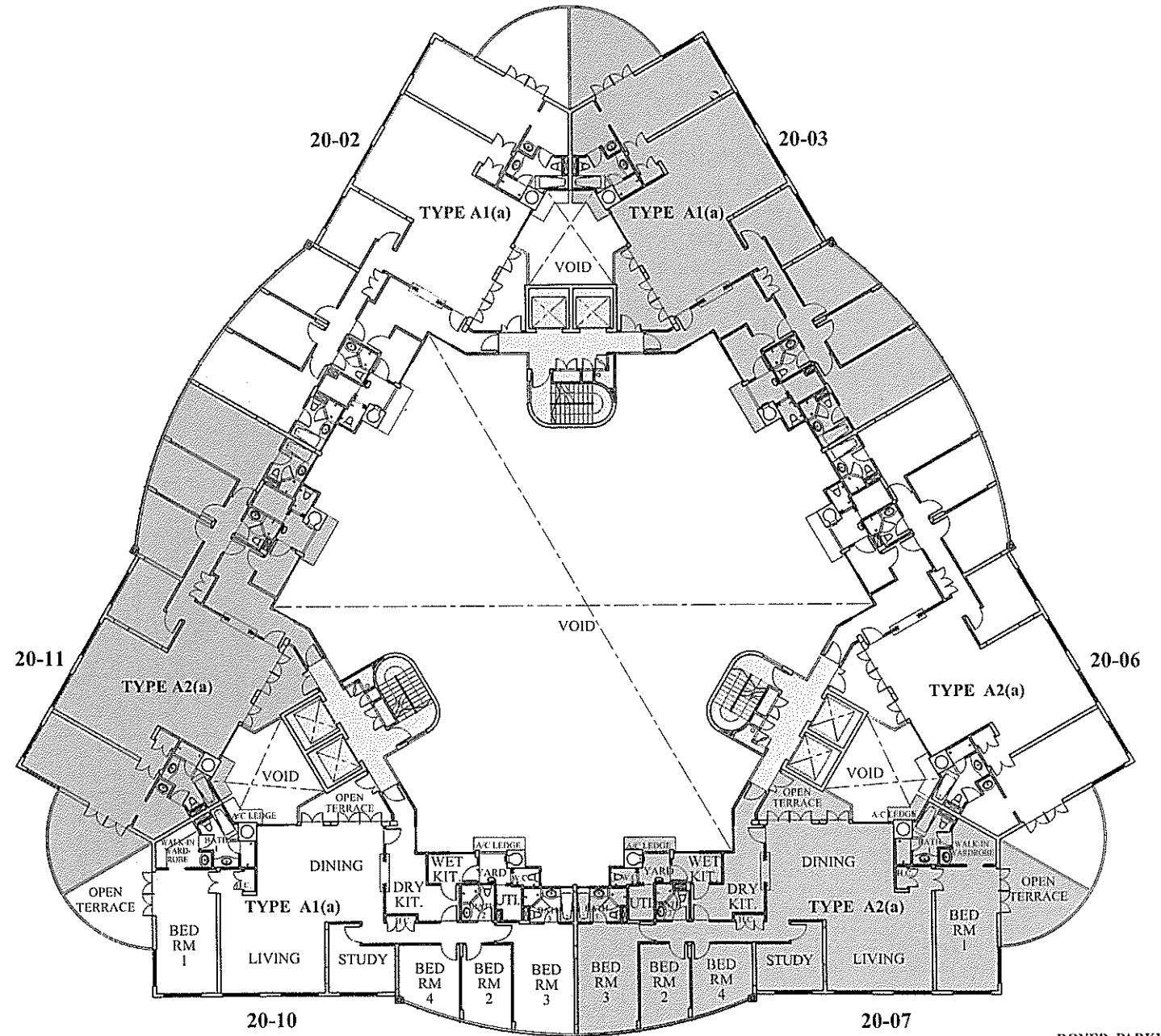






# TOWER A

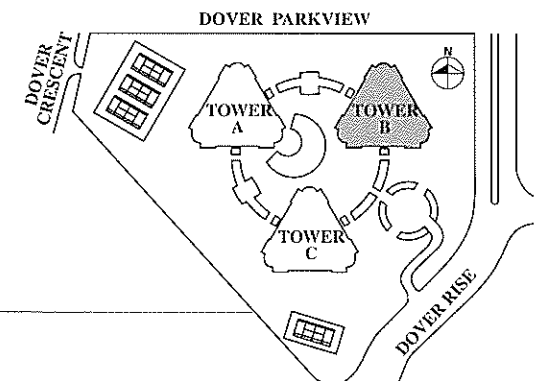
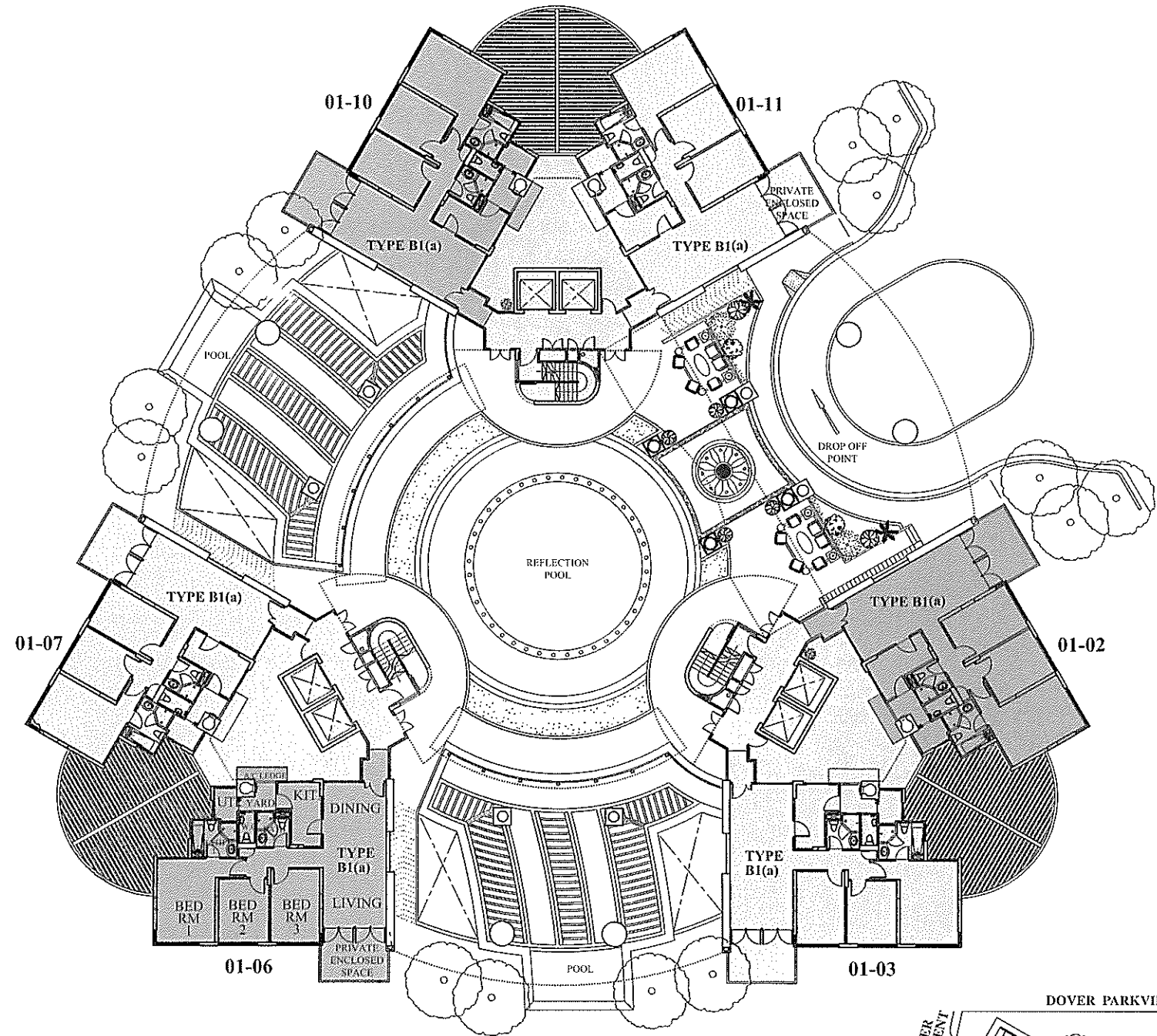
## 20th STOREY PLAN



The above plan is subject to change as may be approved by the relevant authorities.

# TOWER B

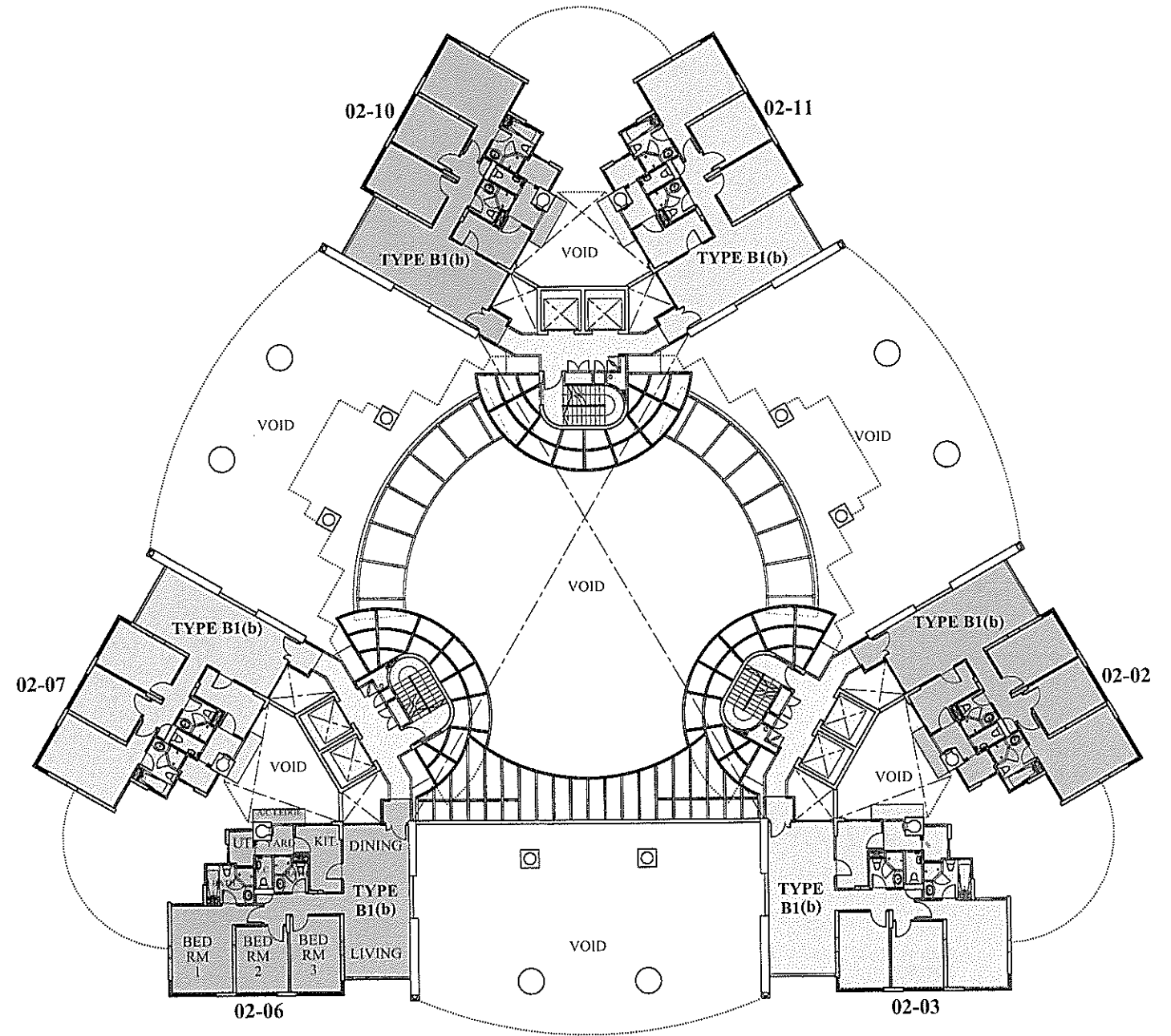
## 1st STOREY PLAN



The above plan is subject to change as may be approved by the relevant authorities.

# TOWER B

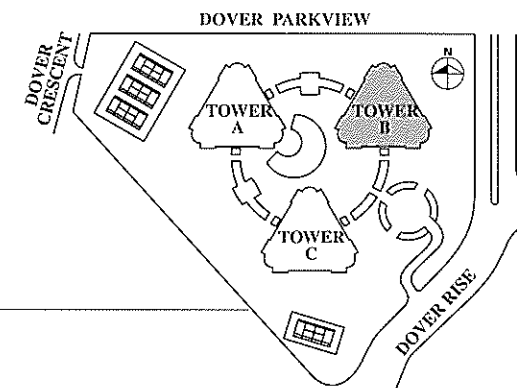
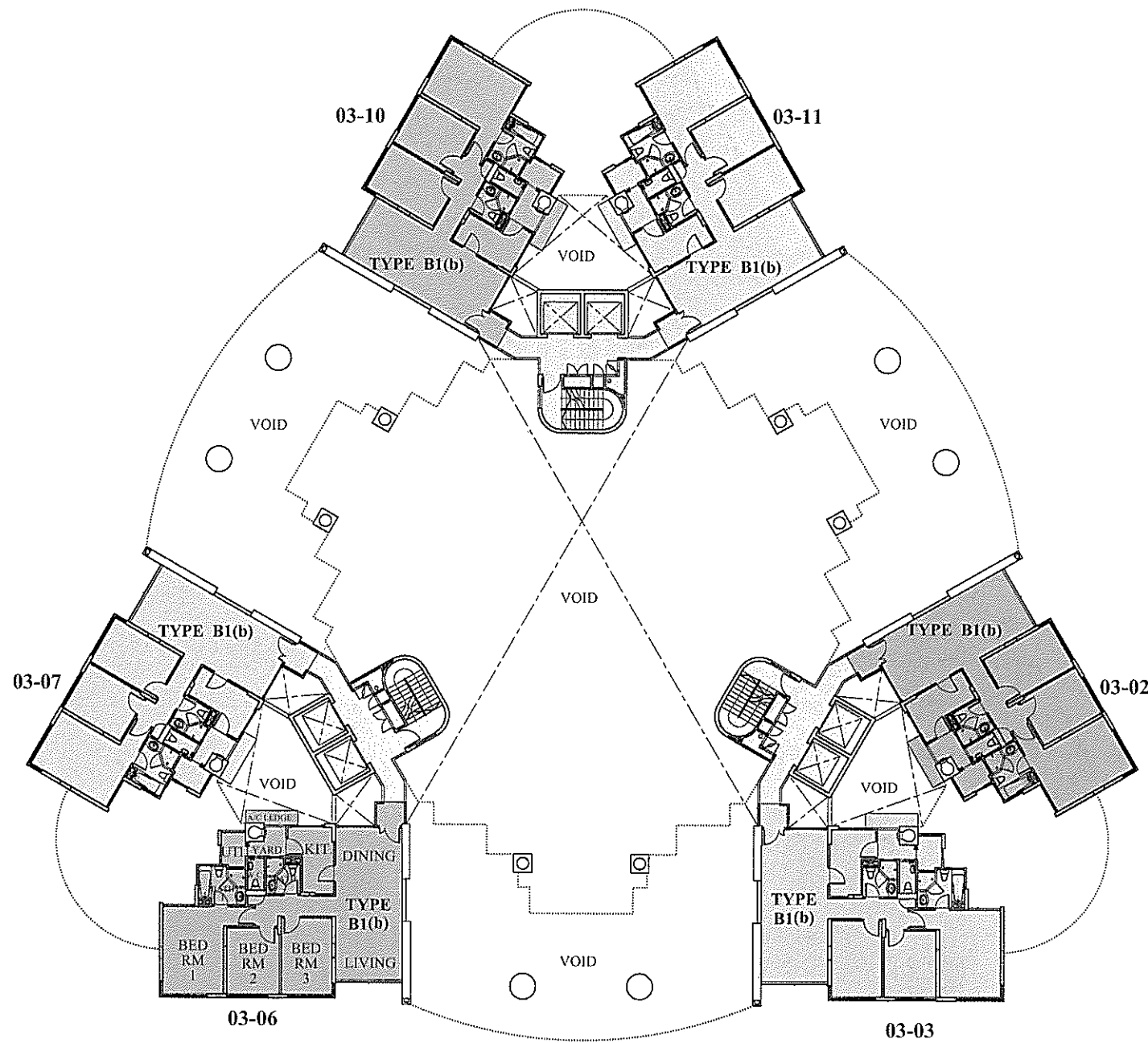
## 2nd STOREY PLAN



The above plan is subject to change as may be approved by the relevant authorities.

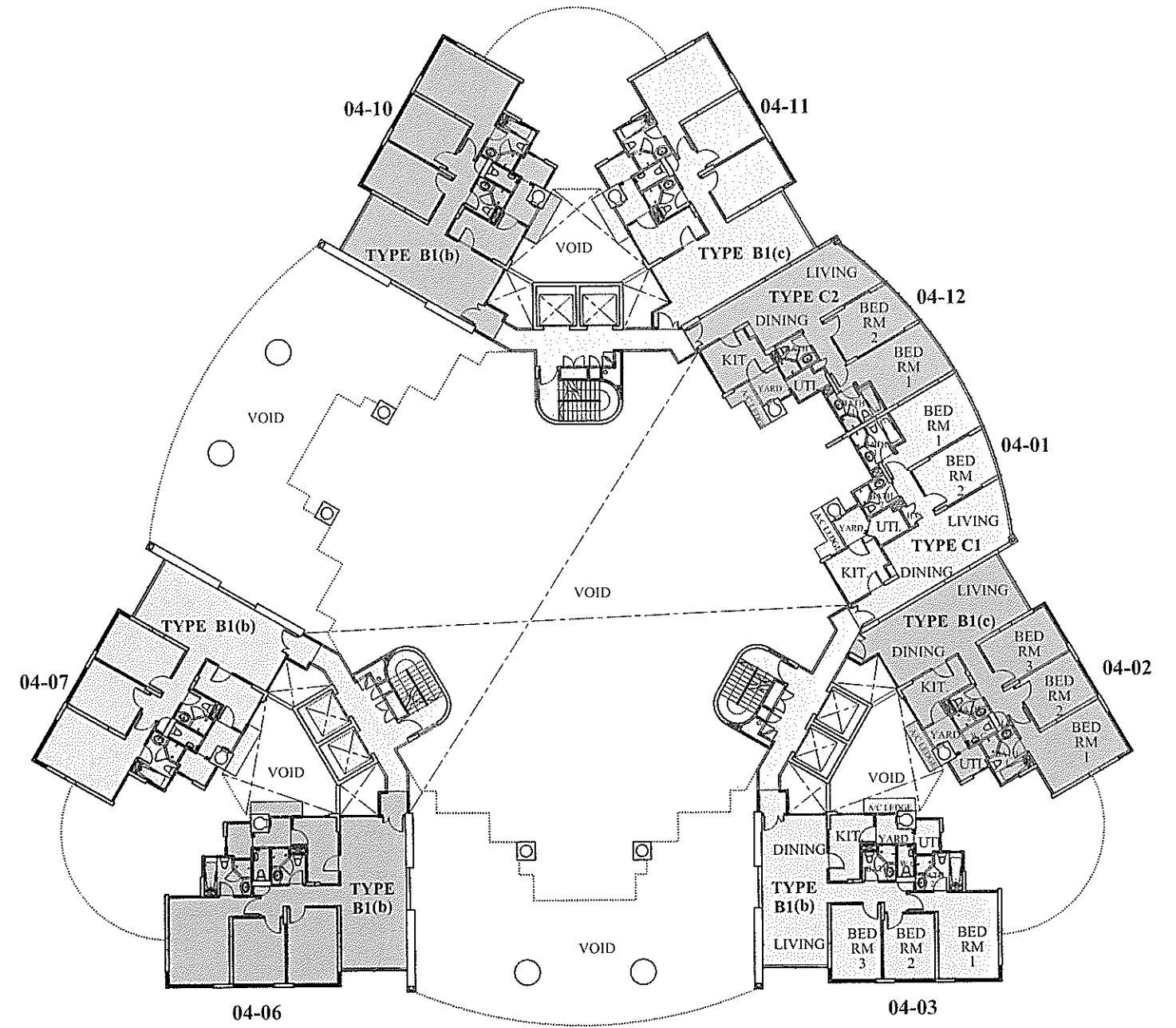
# TOWER B

## 3rd STOREY PLAN



# TOWER B

## 4th STOREY PLAN

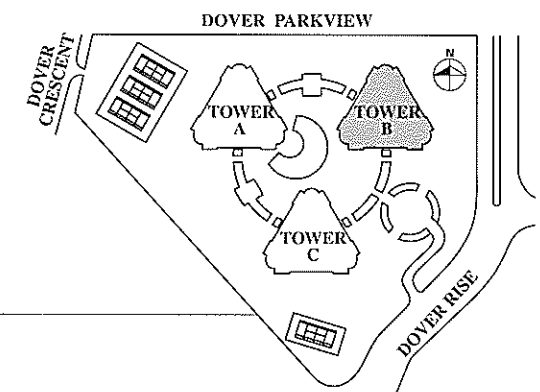
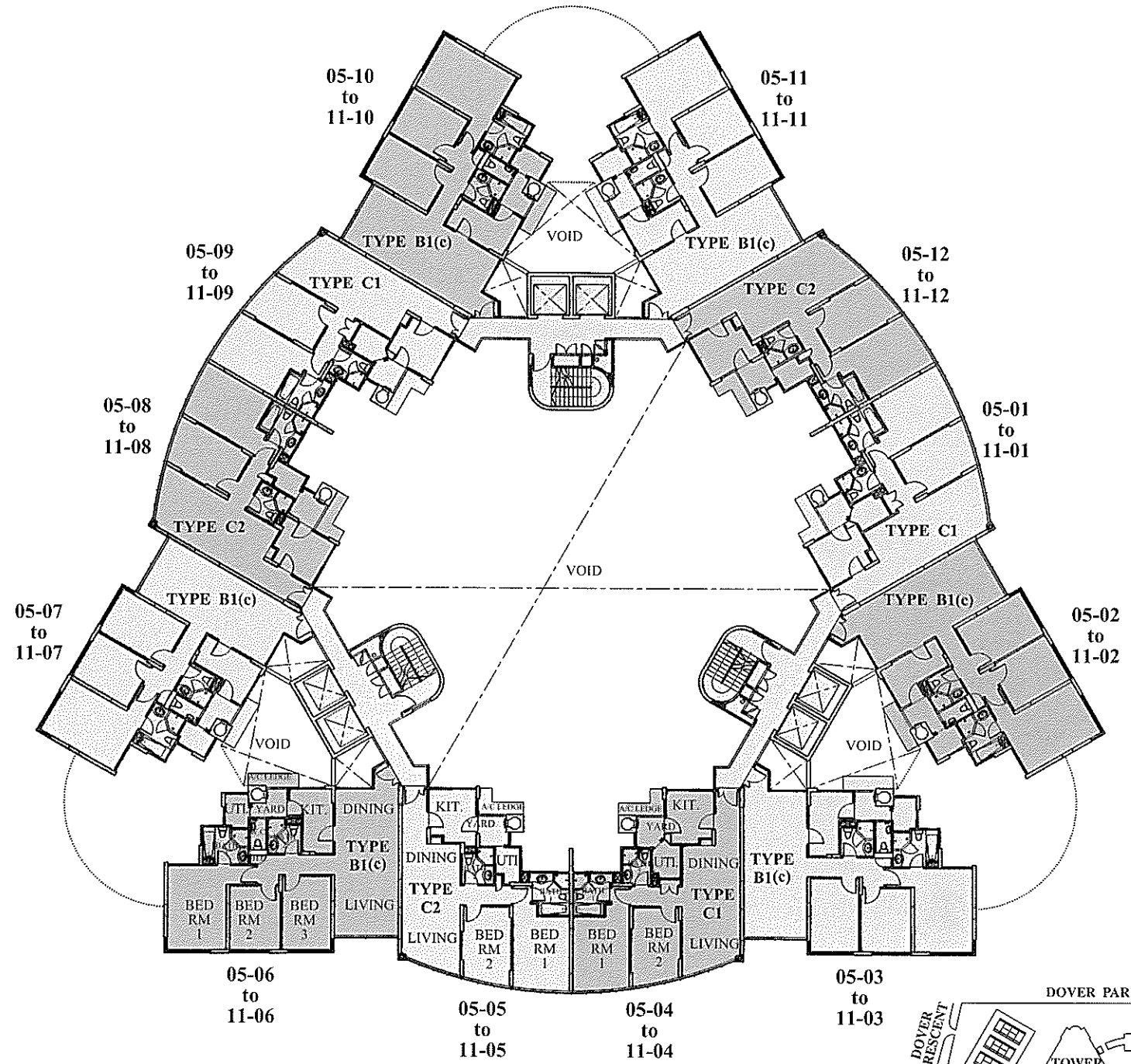


The above plan is subject to change as may be approved by the relevant authorities.



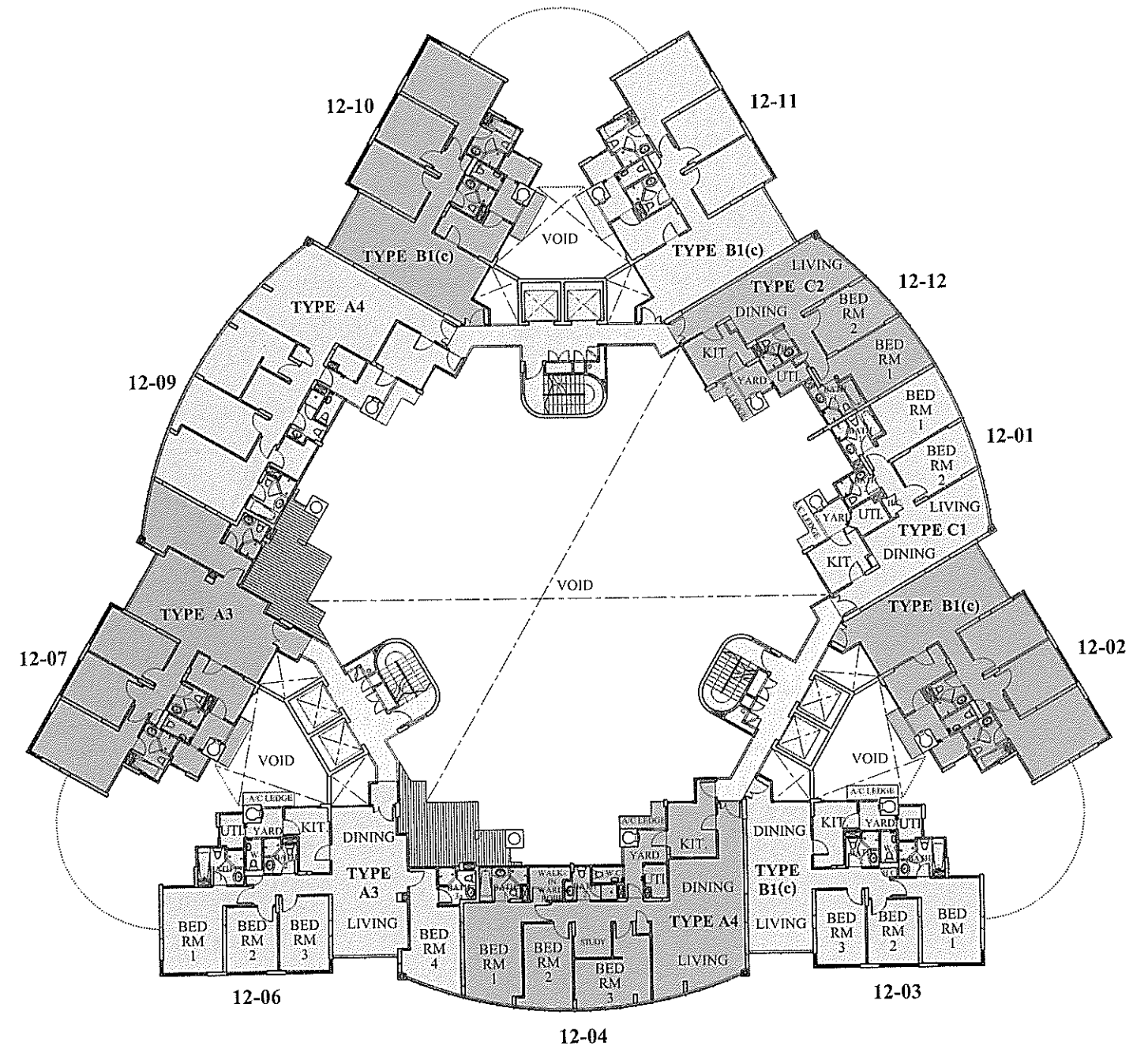
# TOWER B

## 5-11th STOREY PLAN



# TOWER B

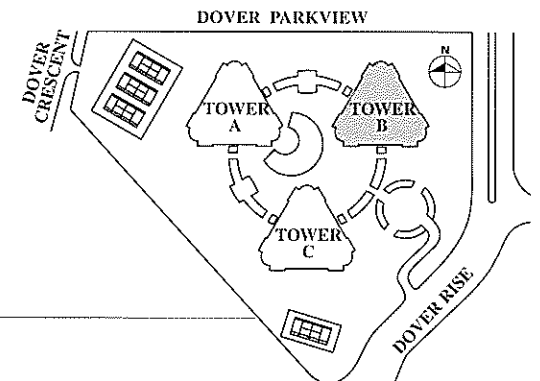
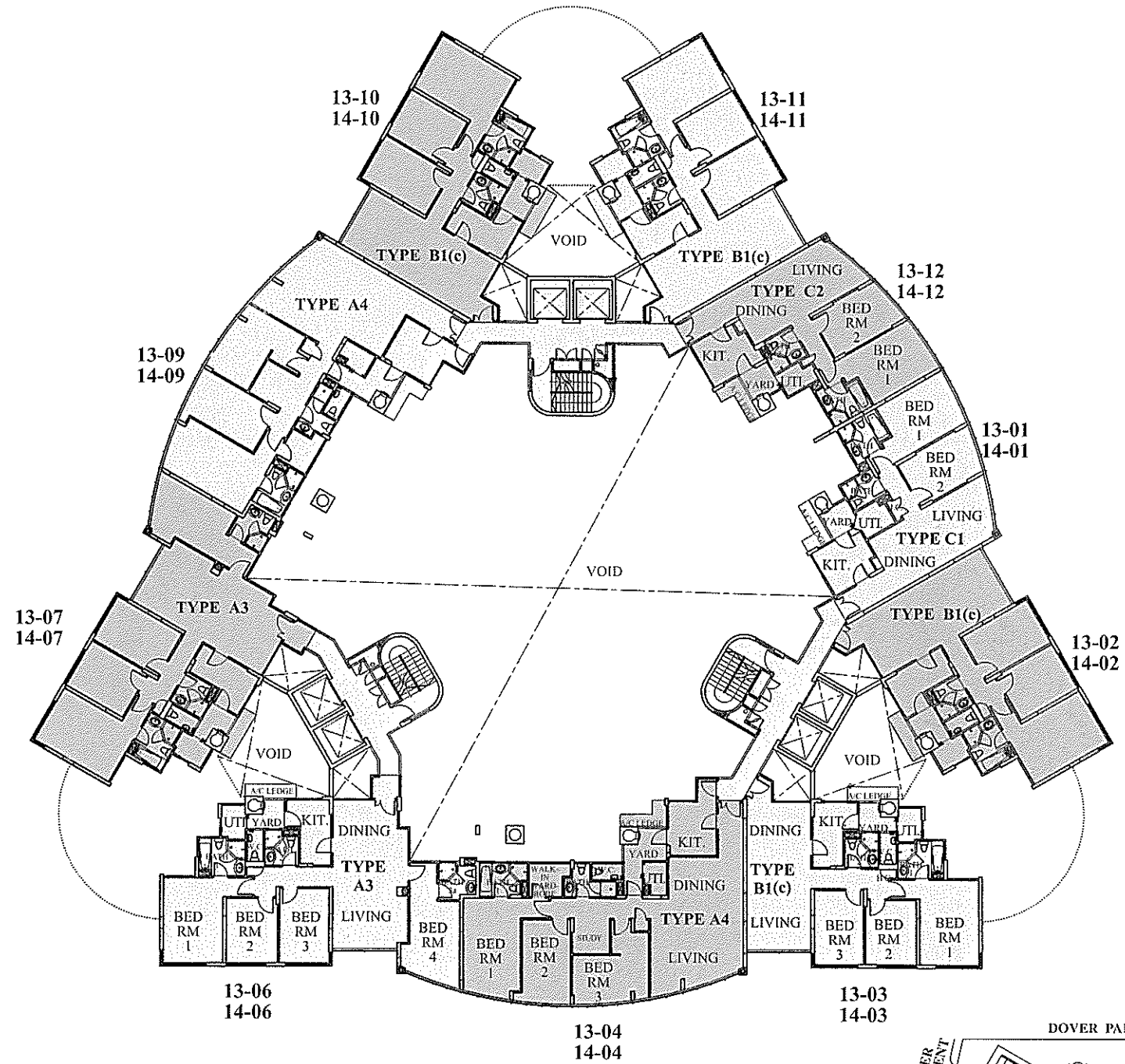
## 12th STOREY PLAN



The above plan is subject to change as may be approved by the relevant authorities.

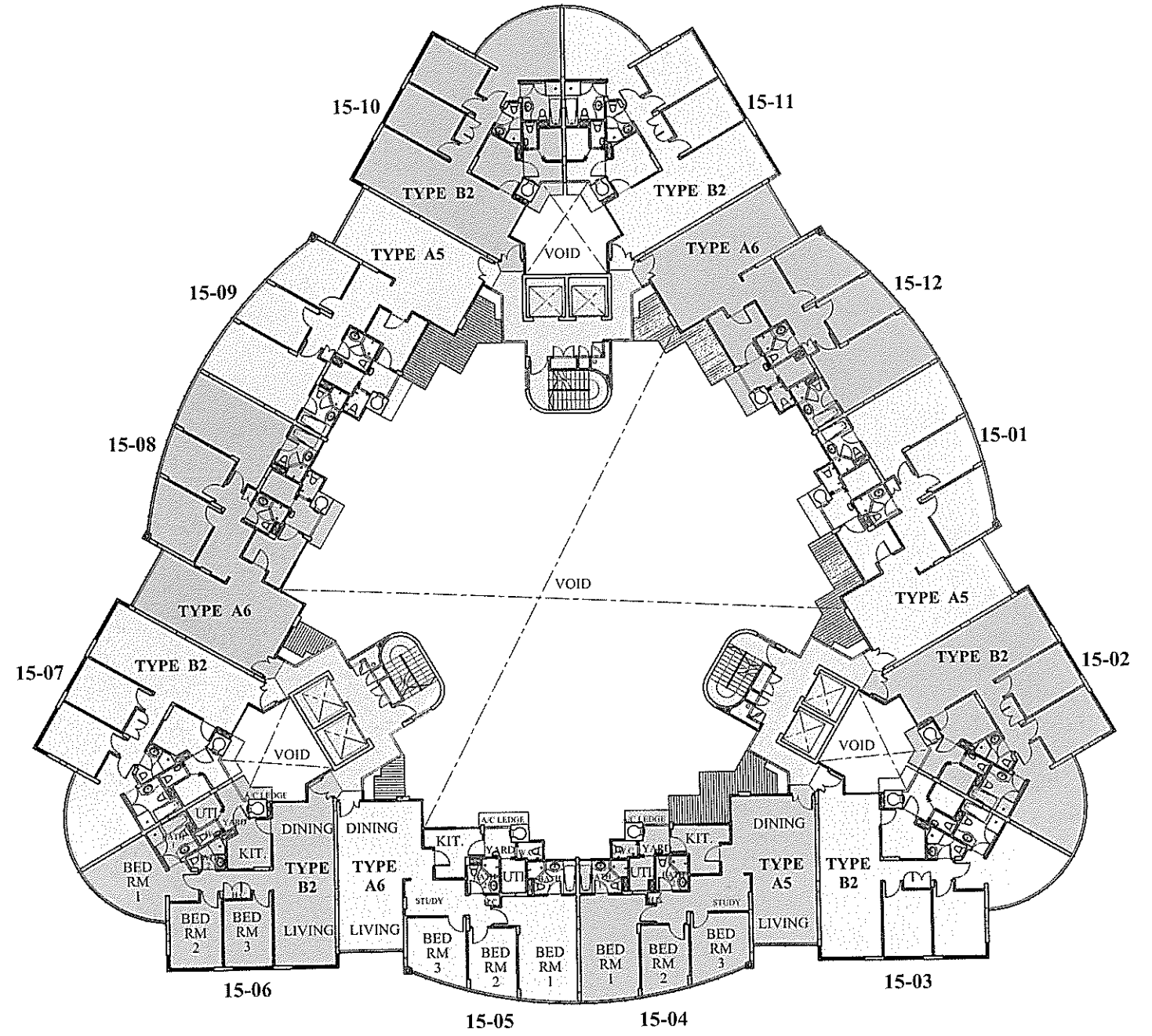
# TOWER B

## 13-14th STOREY PLAN



# TOWER B

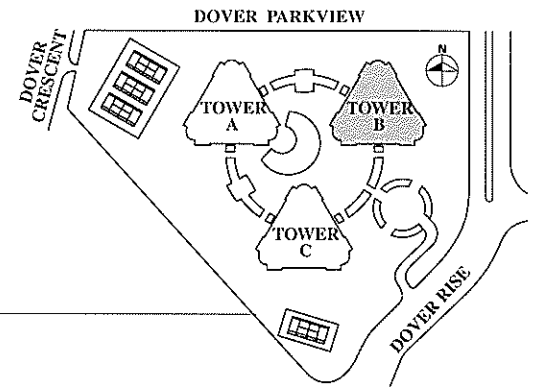
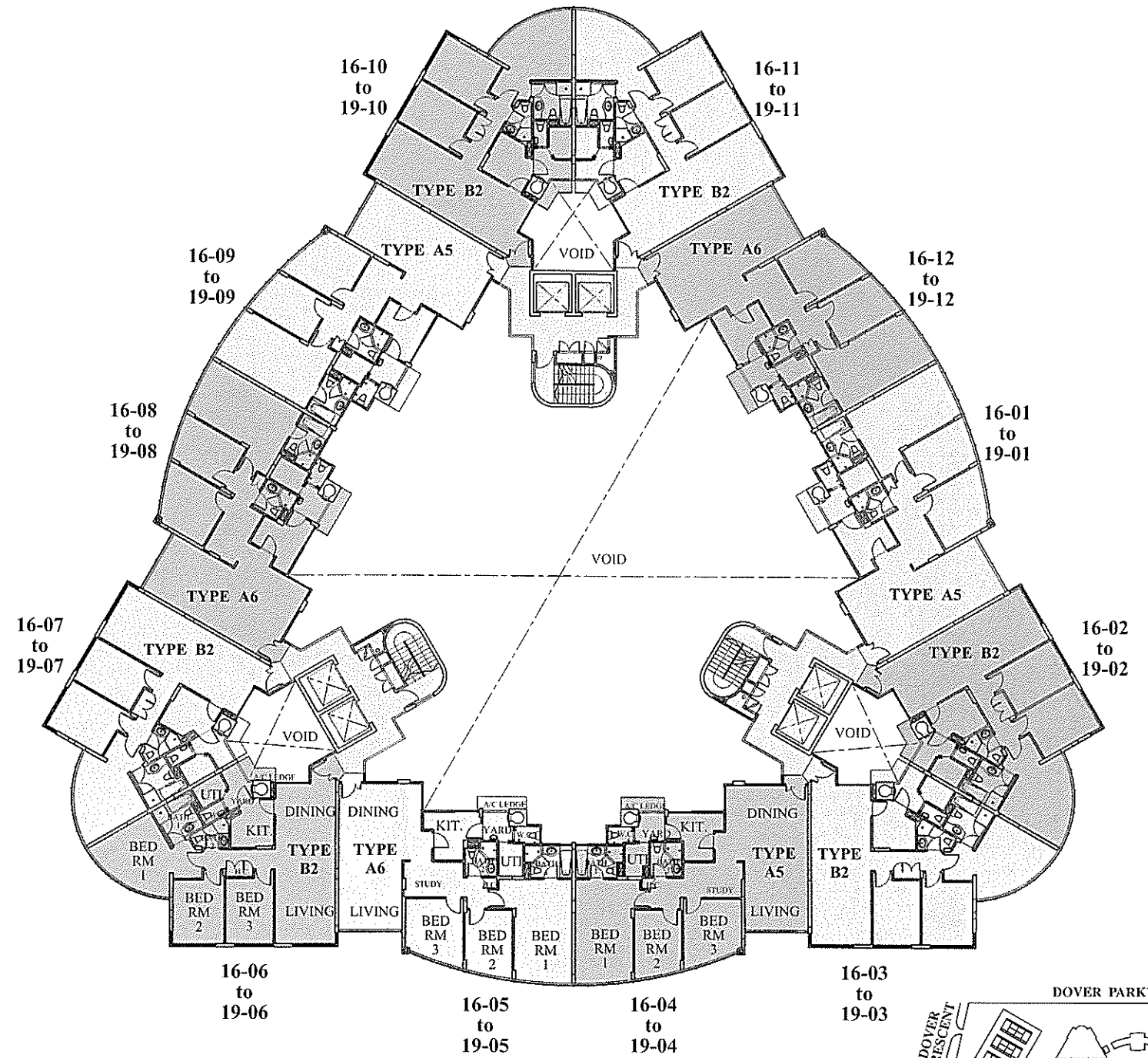
## 15th STOREY PLAN



The above plan is subject to change as may be approved by the relevant authorities.

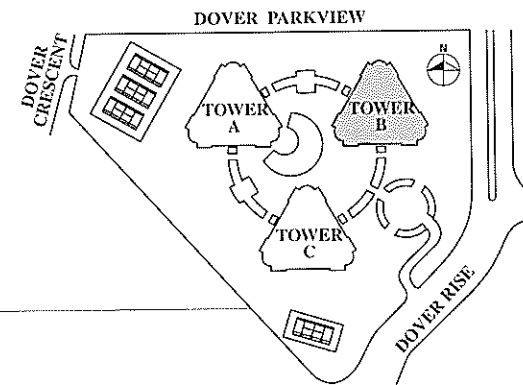
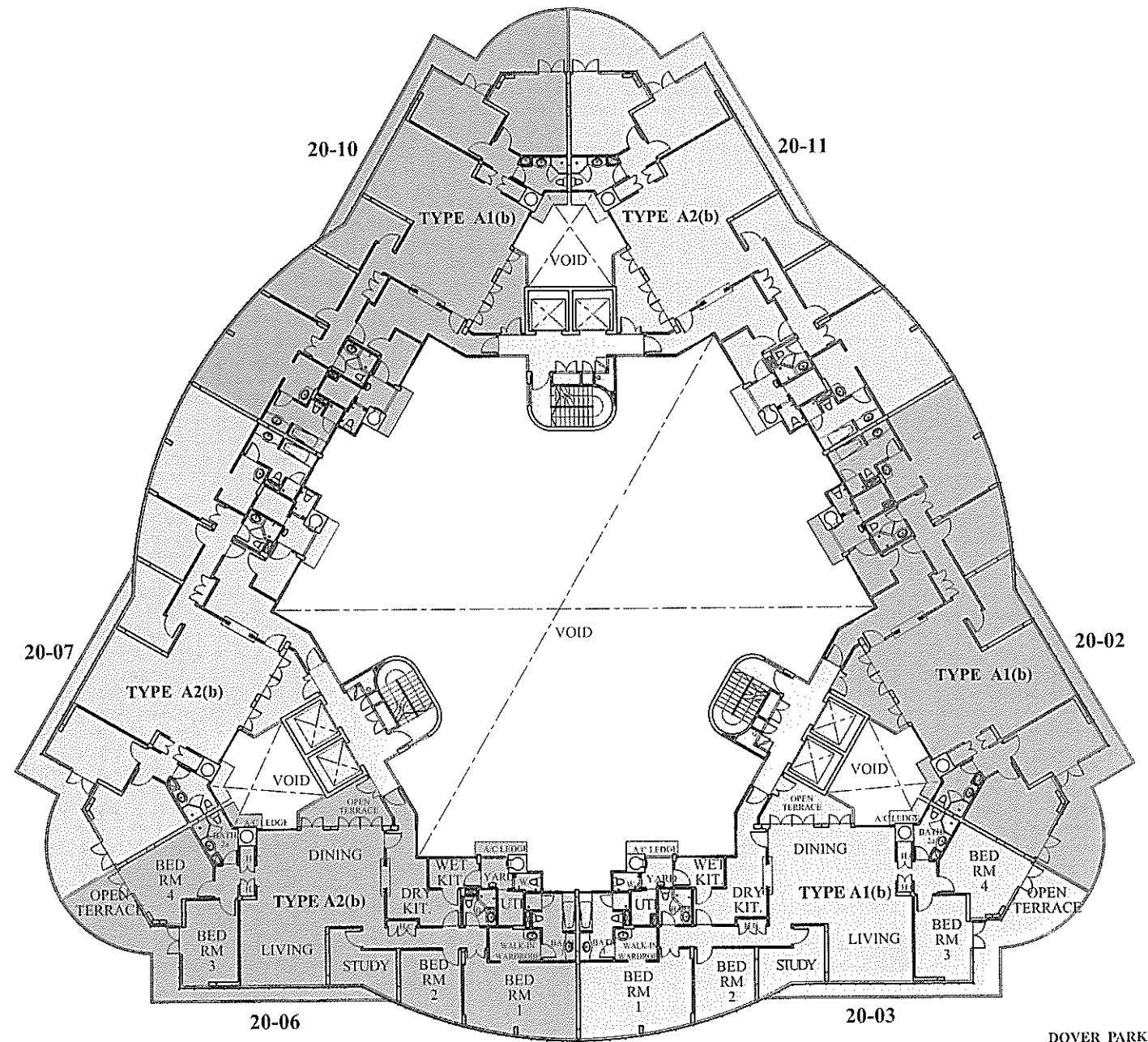
# TOWER B

## 16-19th STOREY PLAN



# TOWER B

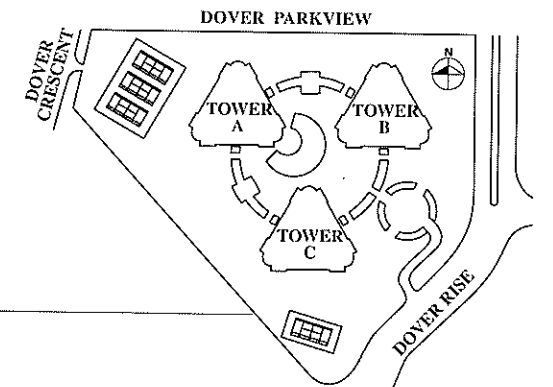
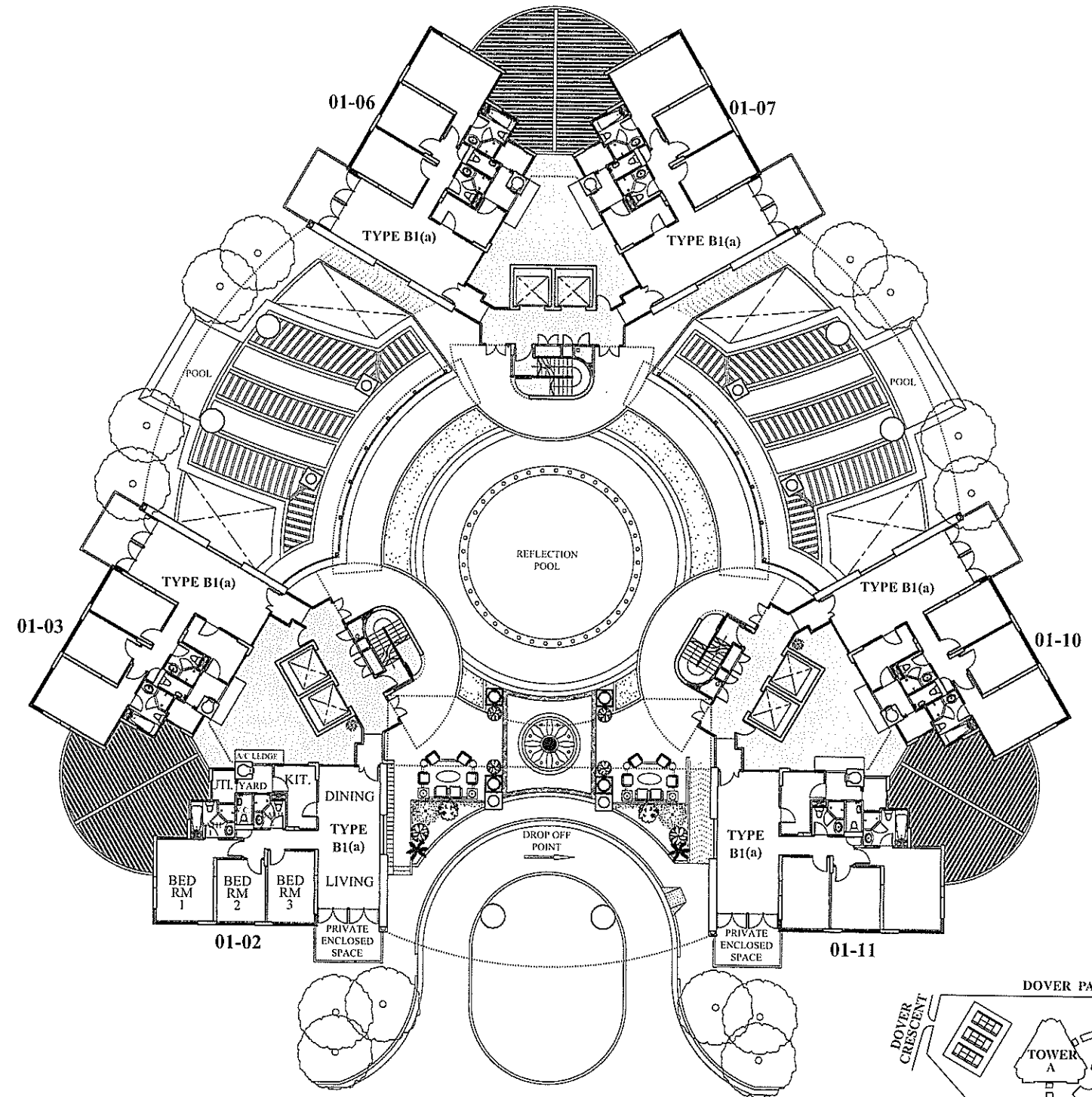
## 20th STOREY PLAN



The above plan is subject to change as may be approved by the relevant authorities.

# TOWER C

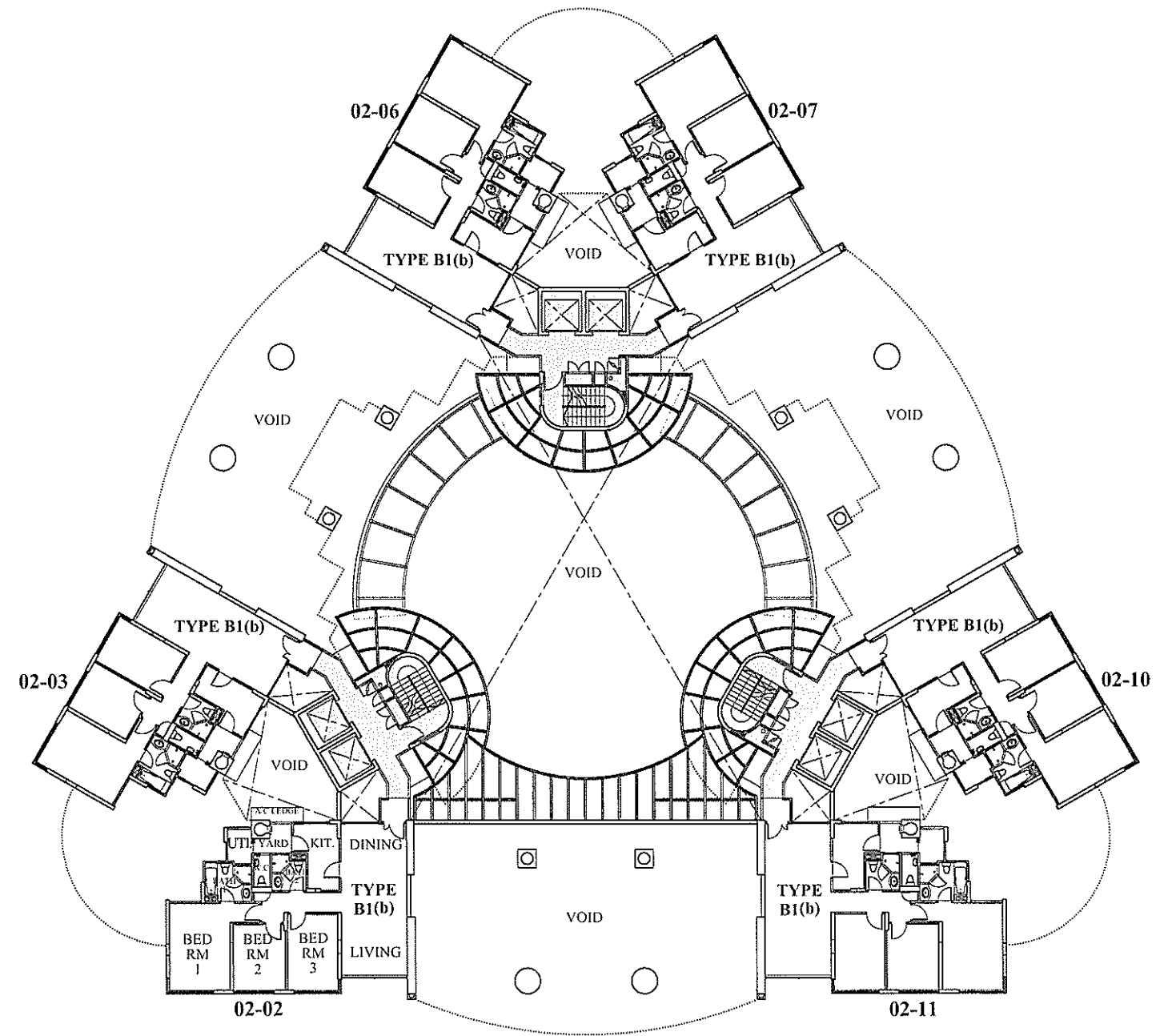
## 1st STOREY PLAN



The above plan is subject to change as may be approved by the relevant authorities.

# TOWER C

## 2nd STOREY PLAN

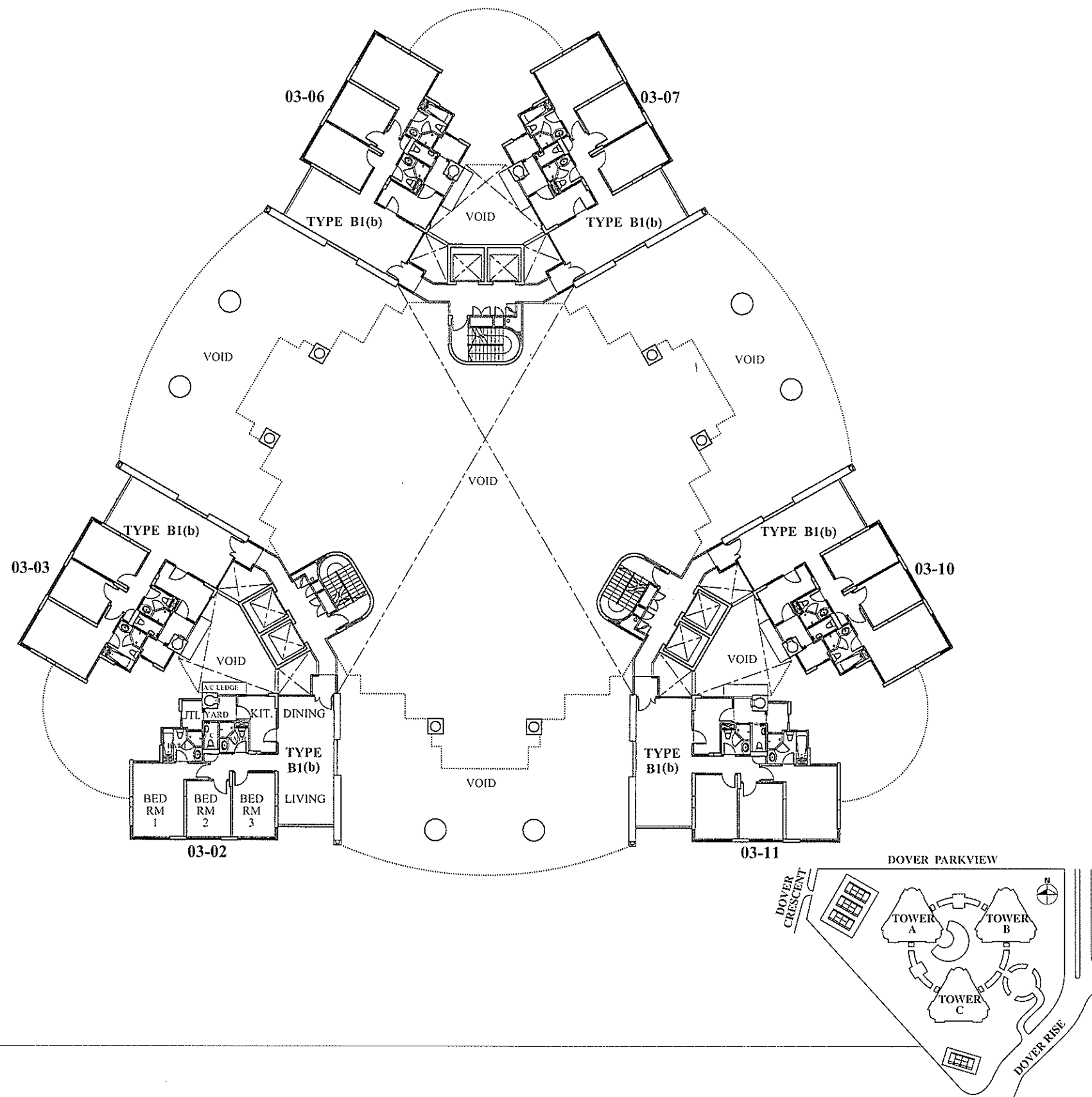


The above plan is subject to change as may be approved by the relevant authorities.



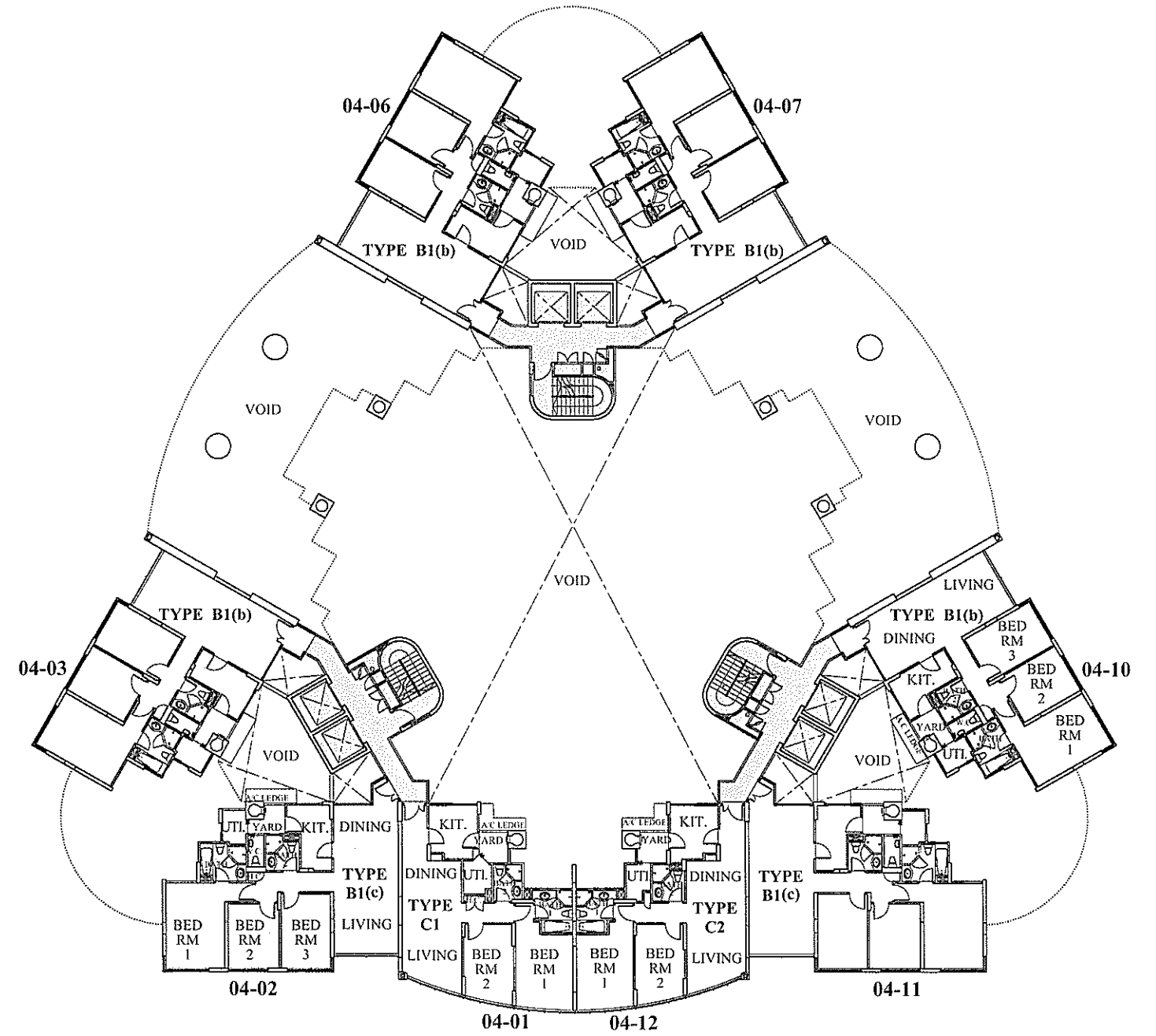
# TOWER C

## 3rd STOREY PLAN



# TOWER C

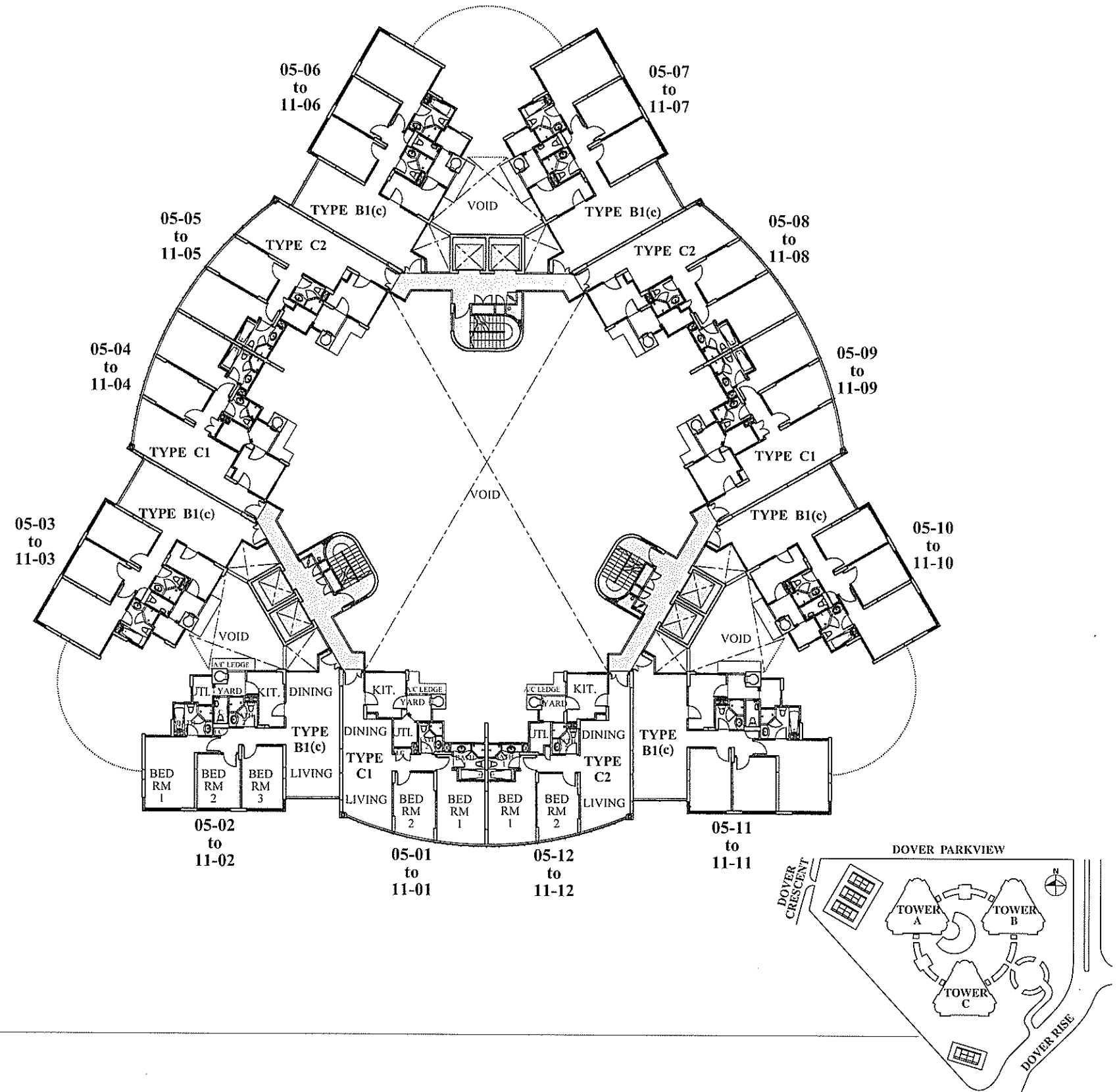
## 4th STOREY PLAN



The above plan is subject to change as may be approved by the relevant authorities.

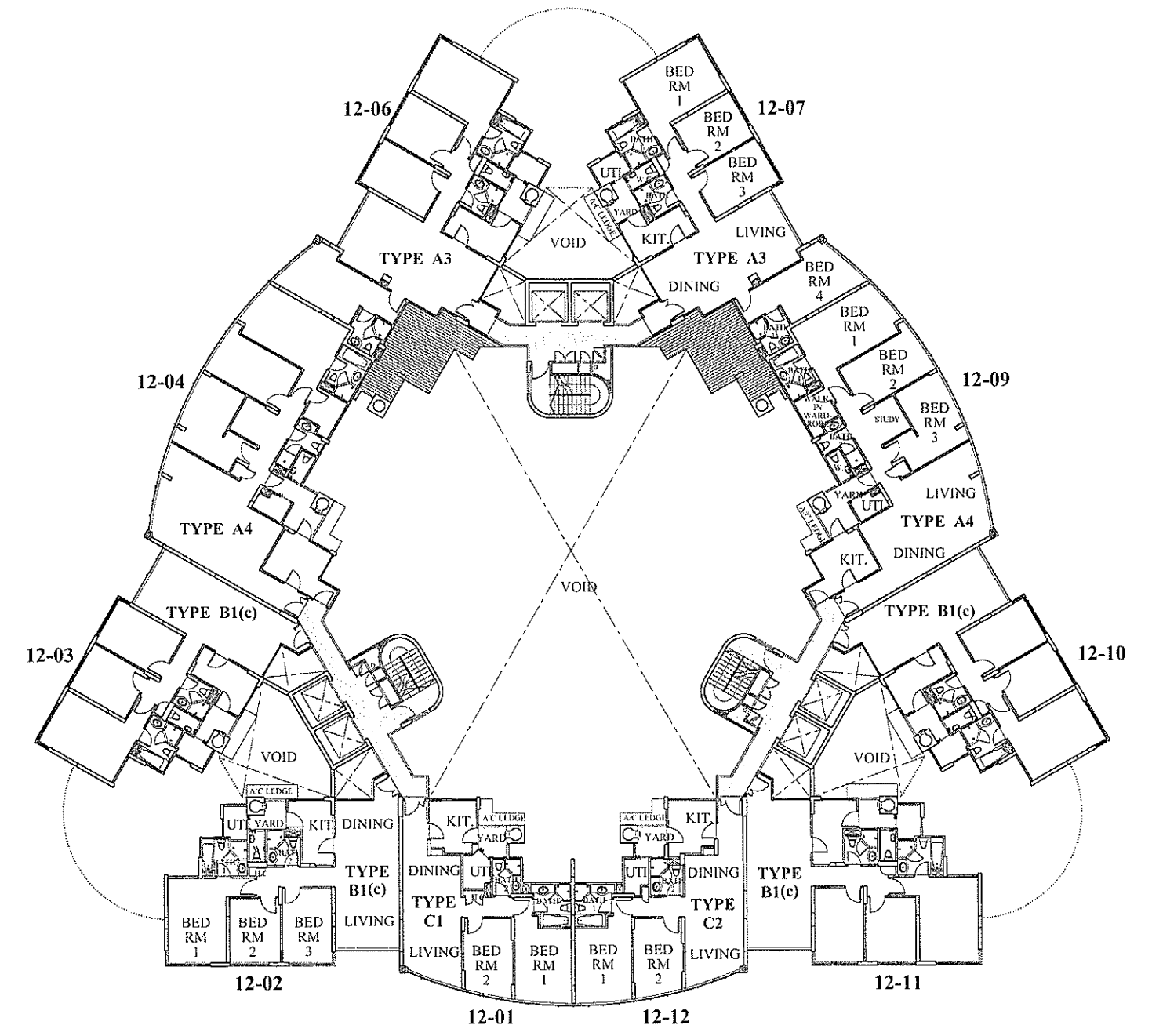
# TOWER C

## 5-11th STOREY PLAN



# TOWER C

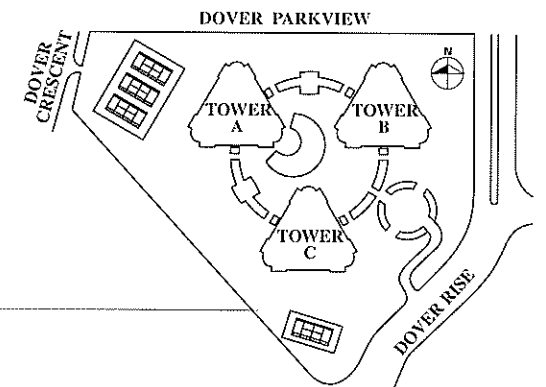
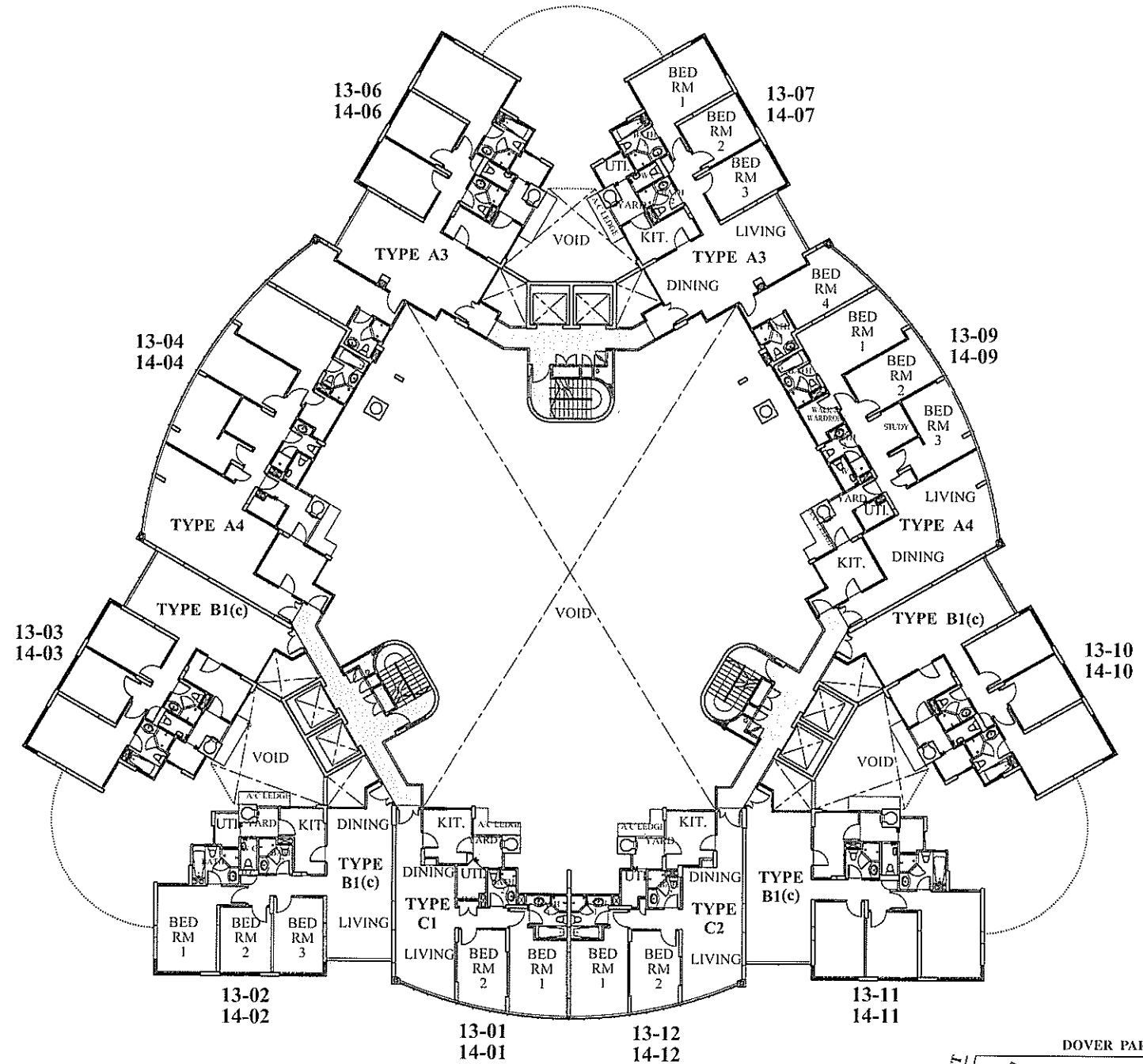
## 12th STOREY PLAN



The above plan is subject to change as may be approved by the relevant authorities.

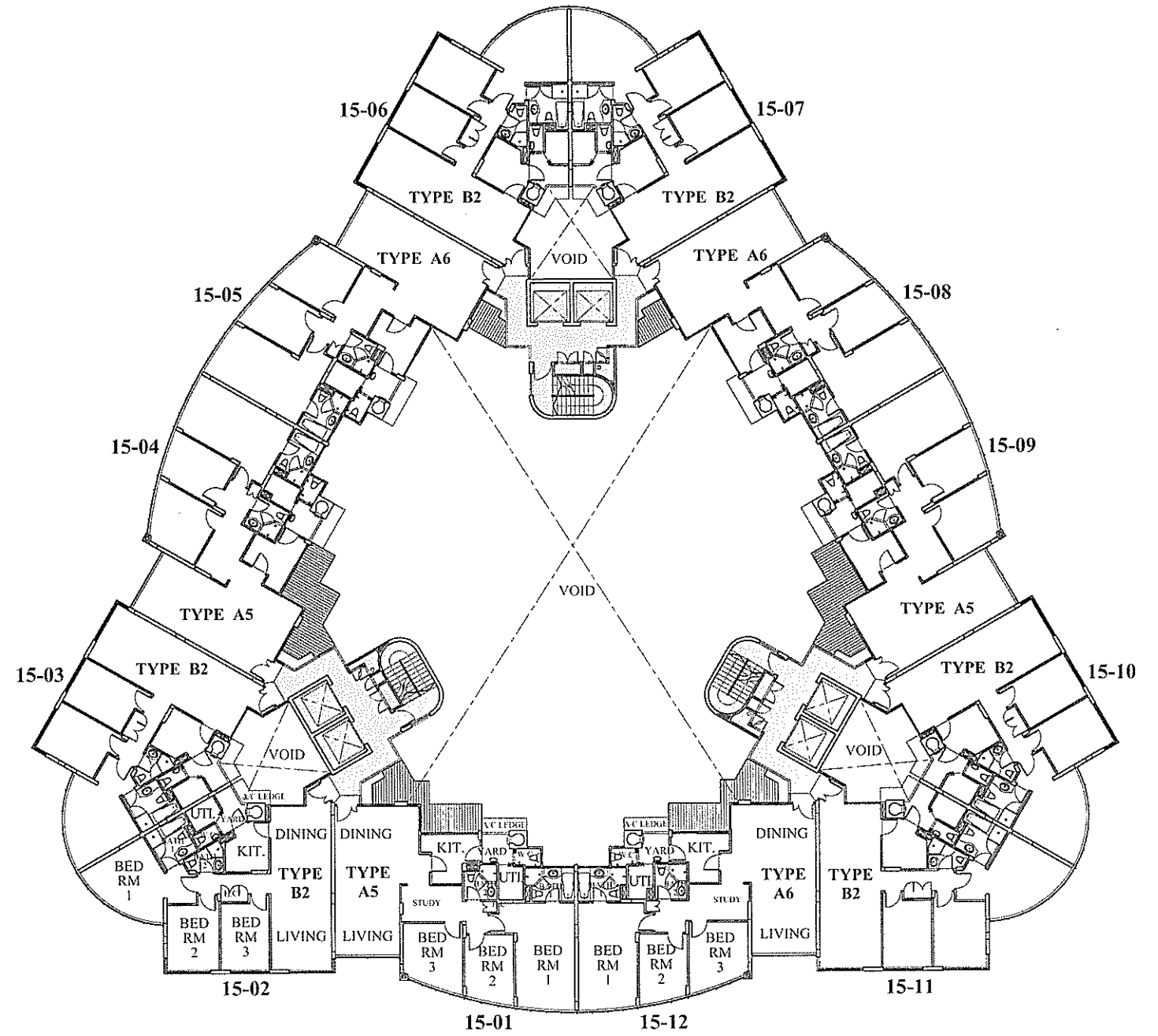
# TOWER C

## 13-14th STOREY PLAN



# TOWER C

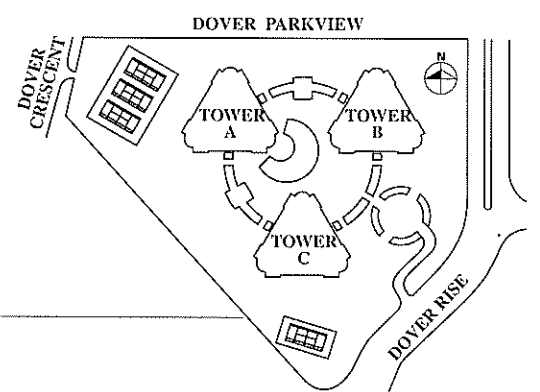
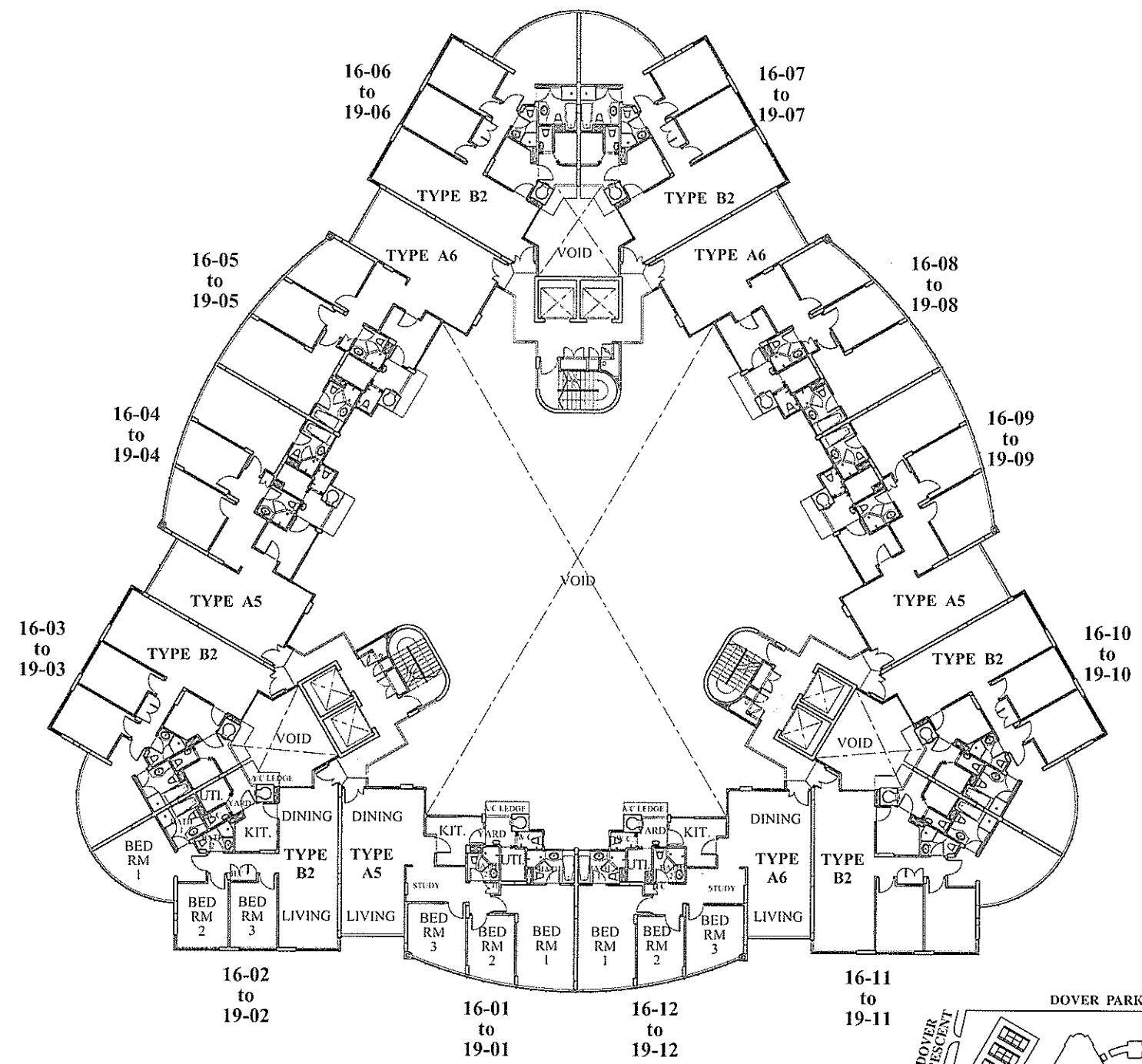
## 15th STOREY PLAN



The above plan is subject to change as may be approved by the relevant authorities.

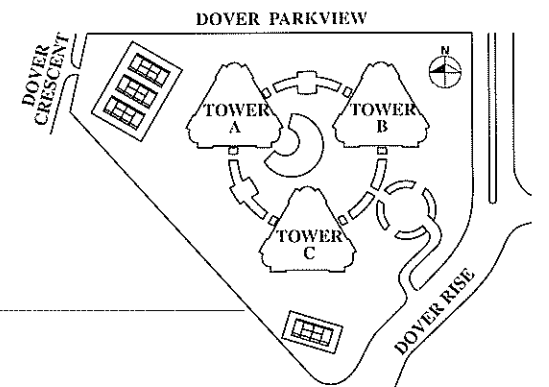
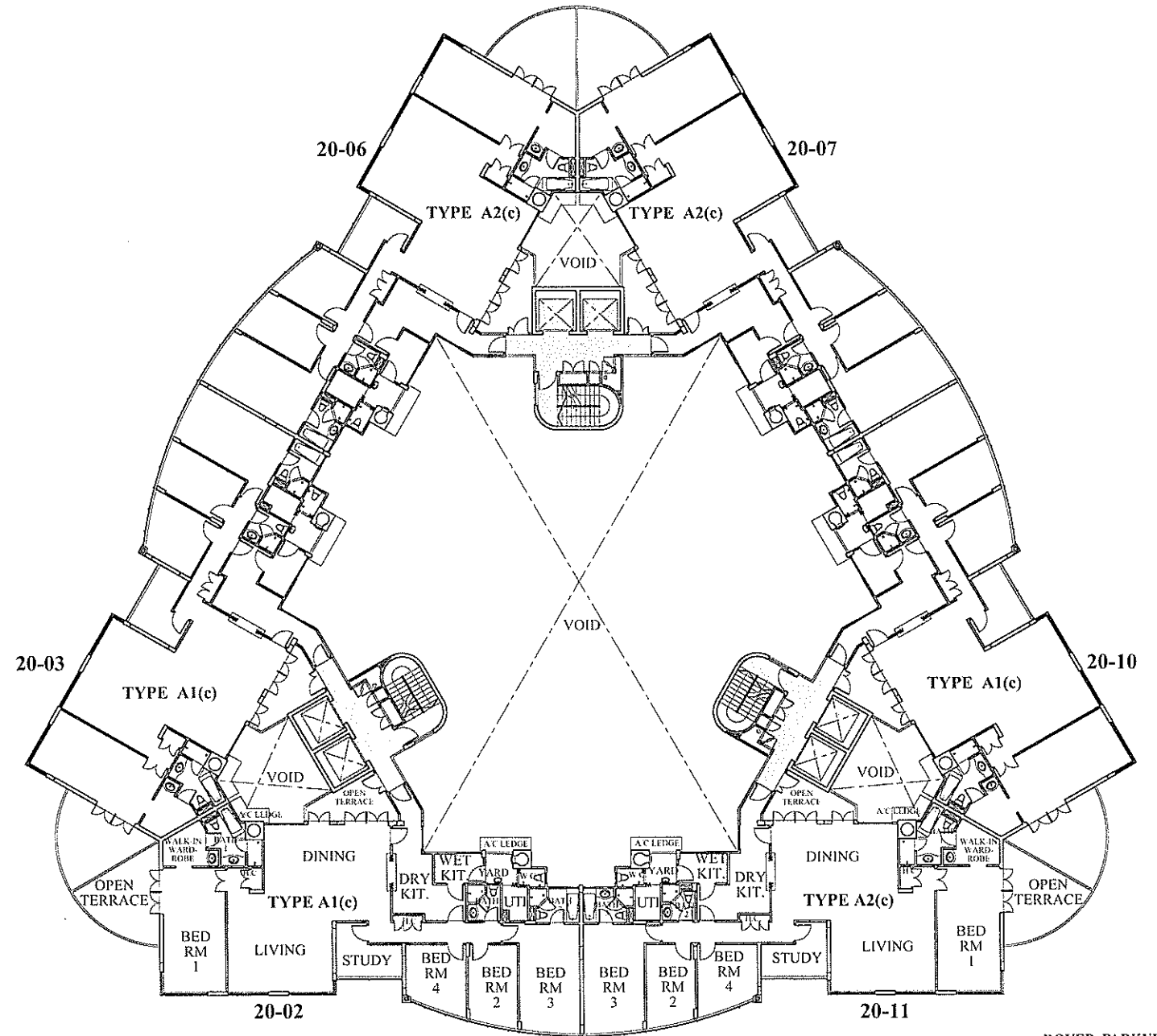
# TOWER C

## 16-19th STOREY PLAN



# TOWER C

## 20th STOREY PLAN

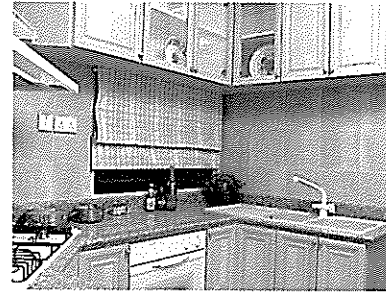


The above plan is subject to change as may be approved by the relevant authorities.



# Special Features.....

## SPECIALLY DESIGNED KITCHENS WITH



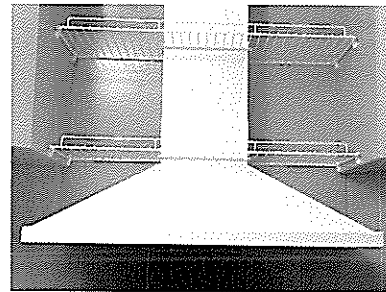
**High and Low Cabinets**  
Specially designed maple finished high and low level cabinets and 'tall boy' units



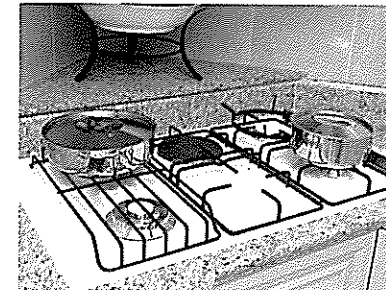
**Homogenous Floor & Wall Tiles**  
'Chromtech' marble look homogenous floor and wall tiles



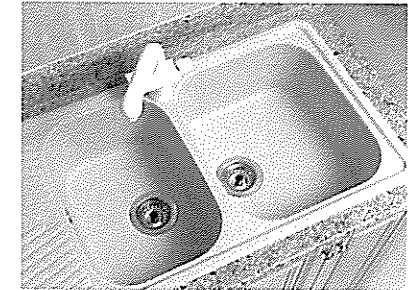
**Granite Worktop**  
Specially designed granite worktop with matching backsplash



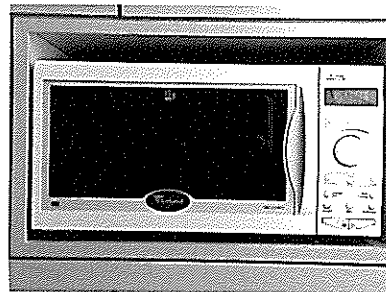
**Hood**  
'Elba' chimney hood



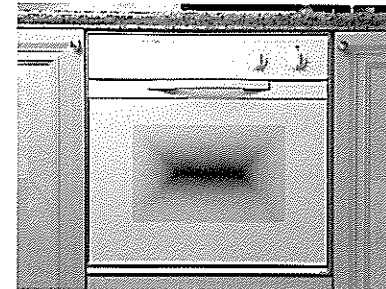
**Hob**  
'Elba' gas cooker hob with hot plate



**Sink**  
Double bowl single drainer 'cristalite' sink



**Microwave Oven**  
Microwave oven built into 'tall boy' unit



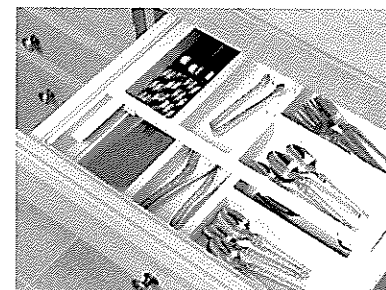
**Oven**  
Conventional oven built-in below hob



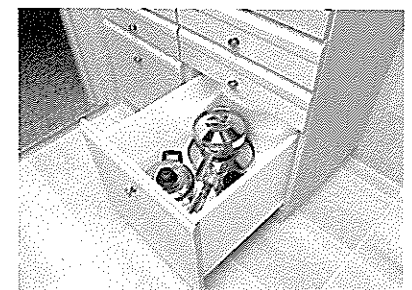
**Waste Bin**  
Waste bin built-in below sink



**Revolving Corner Unit**



**Cutlery Tray**



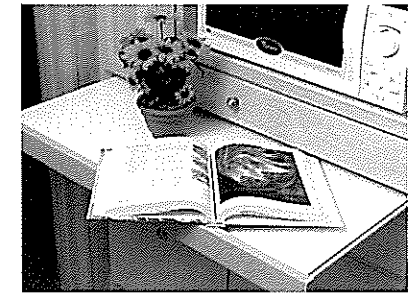
**Pan Drawers**



**Pull-out Cabinet**  
Pull-out cabinet for all kitchens except type A4, A5 and A6



**Ample Drawers**



**Pull-out Worktop**

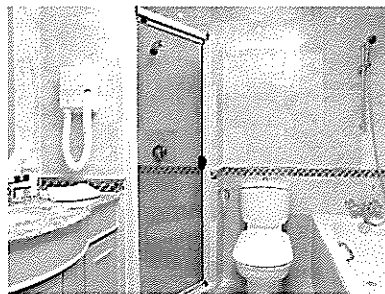


**Wine Rack**

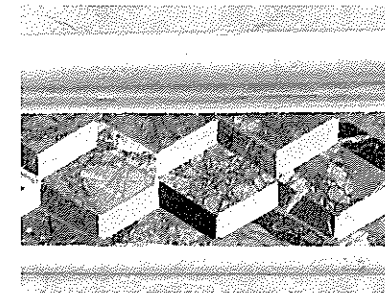


**Spice Rack**

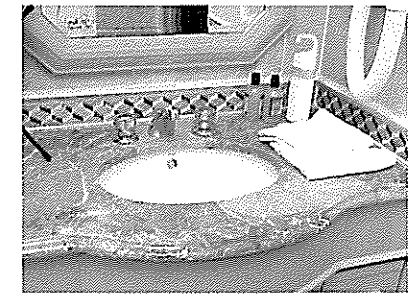
**MASTER BATHROOMS WITH**



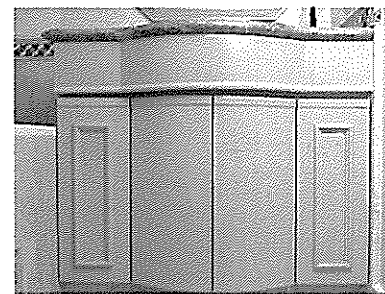
**Marble Wall and Floor Finishes**  
Polished Beige Capistrano marble floor and wall tiles



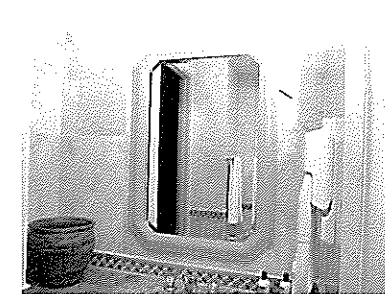
**Marble 'Dado'**  
Specially designed marble 'dado' wall trim



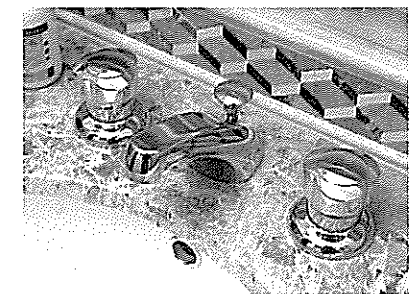
**Marble Vanity**  
Specially designed polished marble vanity counter with undercounter basin



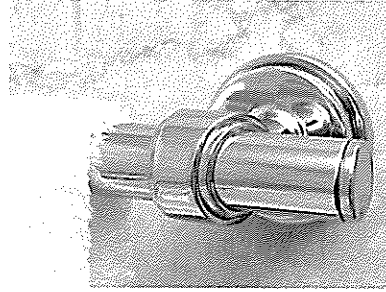
**Vanity Cabinet**  
Specially designed maple finished vanity cabinet



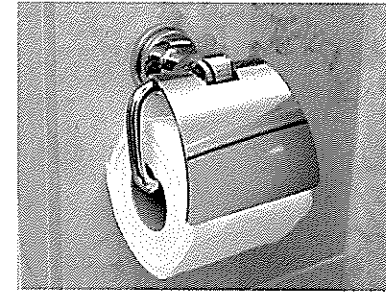
**Vanity Mirror**  
Specially designed decorative vanity mirror



**Sanitary Fittings**  
Specially selected brass/chrome mixer taps



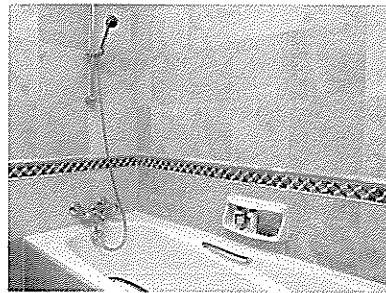
**Sanitary Accessories**  
Specially selected chrome/gold towel rail



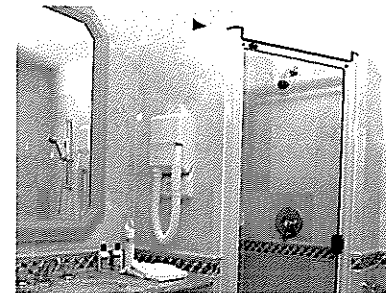
**Sanitary Accessories**  
Specially selected chrome/gold toilet roll holder



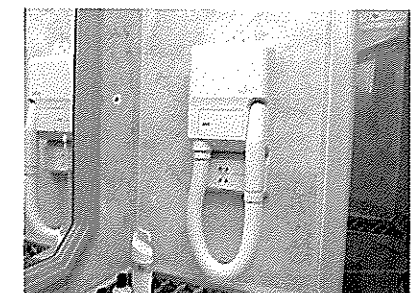
**Pedestal Suite**  
'Ideal standard' pedestal suite



**Longbath**  
Longbath with brass/chrome bath/shower mixer tap



**Shower Cubicle**  
Specially designed shower cubicle with flush mounted shower mixer



**Hairdryer cum Shaver Unit**  
Wall mounted hairdryer cum shaver unit

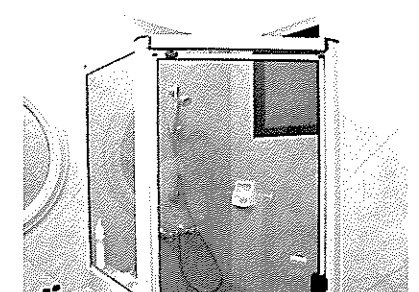
**COMMON BATHROOMS WITH**



**Ceramic Floor and Wall Tiles**  
Specially selected ceramic floor and wall tiles



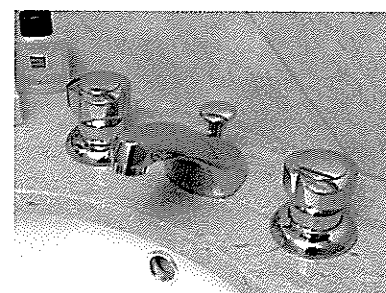
**Marble Vanity**  
Specially designed marble vanity counter with undercounter basin



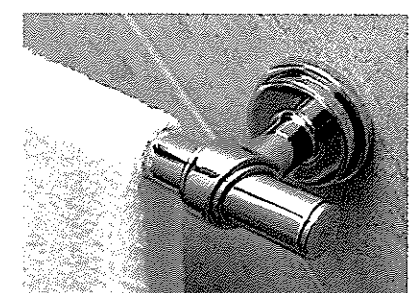
**Shower Cubicle**  
Framed glass shower cubicle



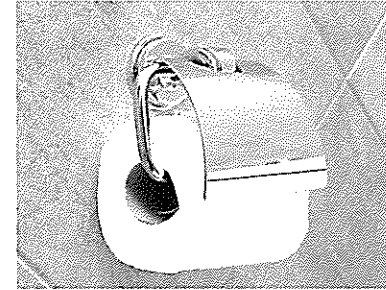
**Pedestal Suite**  
'Ideal standard' pedestal suite



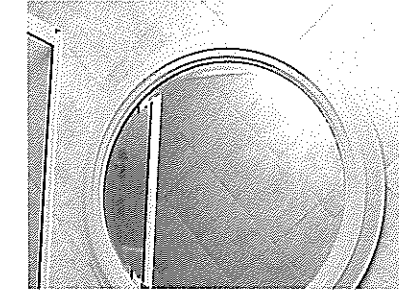
**Sanitary Fittings**  
Specially selected chrome mixer taps



**Sanitary Accessories**  
Specially selected chrome towel rail



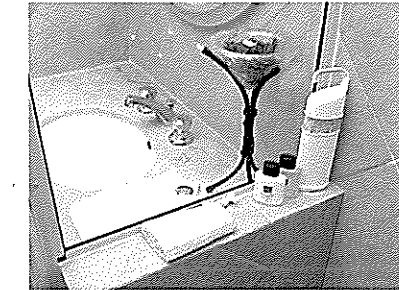
**Sanitary Accessories**  
Specially selected chrome toilet roll holder



**Decorative Vanity Mirror**  
Specially designed decorative vanity mirror

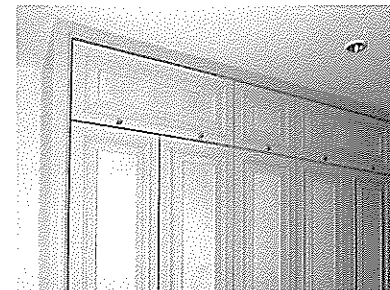


**Vanity Cabinet**  
Specially designed maple finished vanity cabinet



**Accessory ledge**  
Specially detailed accessory ledge within shower cubicle

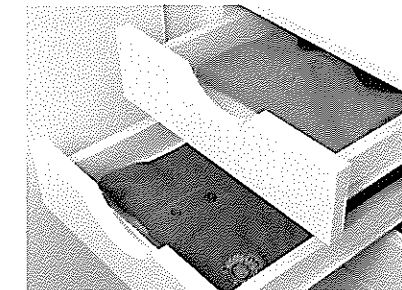
**DESIGNER WARDROBES WITH**



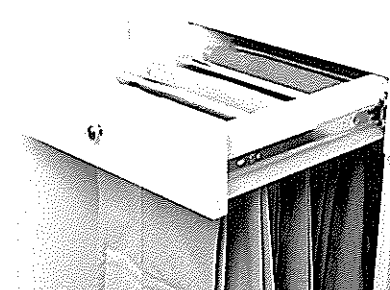
**Maple Finished Swing Doors**



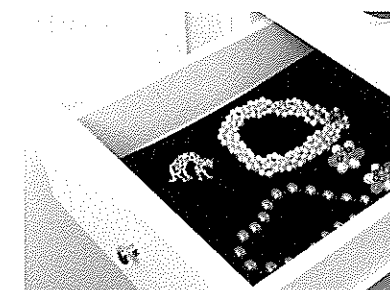
**Luggage Storage Area**



**Shirt Trays**  
Shirt trays to master bedroom only



**Pants cum Tie Rack**  
Pants cum tie rack to master bedroom only



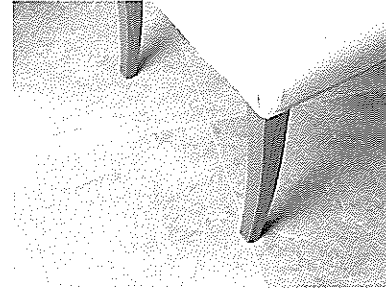
**Jewellery Drawer**  
Jewellery drawer with velvet base to master bedroom only



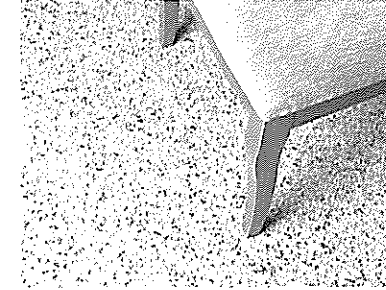
**Built-in Safe**  
Concealed hotel style electronic safe to master bedroom only

## OTHERS

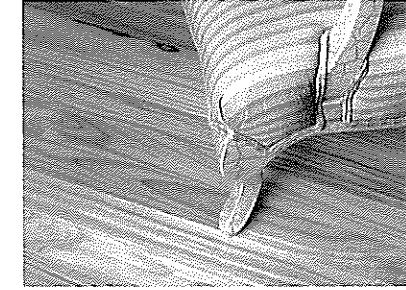
Flooring of your choice for the Living & Dining. You have the choice of 3 types of floor finishes, namely:



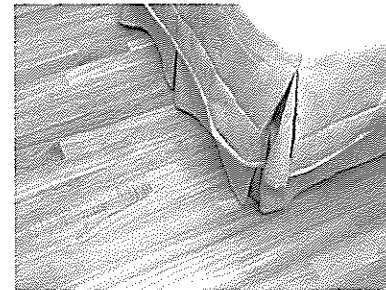
**1. Beige Fawntan' Marble Slabs**



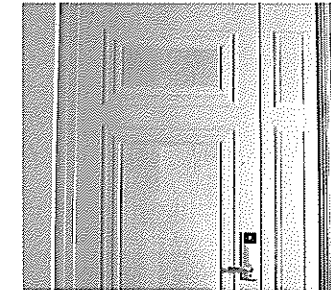
**2. 'Royal Crema' Granite Slabs**



**3. Teak Timber Strip Flooring**



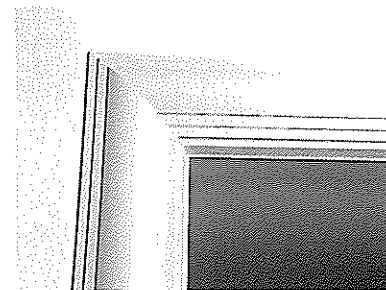
**Teak Timber Flooring**  
Teak timber strip flooring to all bedrooms



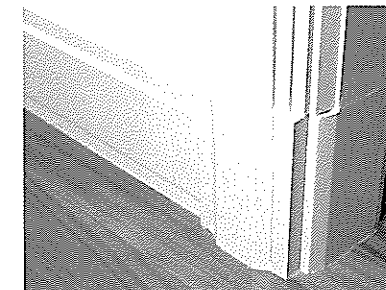
**Designer Entrance Door**  
Specially designed maple finish main entrance door



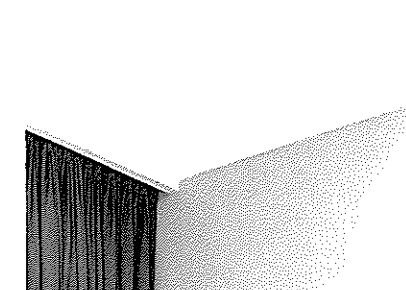
**Magnetic Card Lockset**  
Magnetic card key control lockset for main entrance door



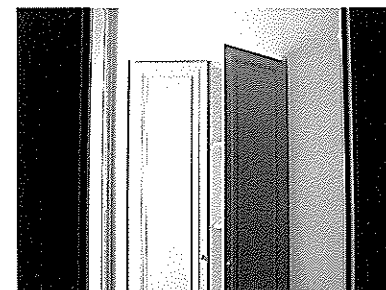
**Designer Architraves**  
Specially designed timber architraves



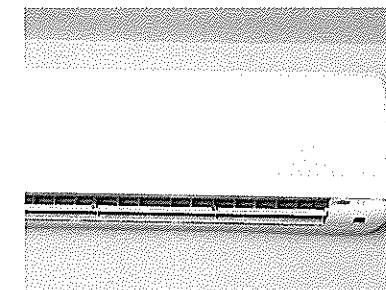
**Designer Skirting**  
Specially designed timber skirting



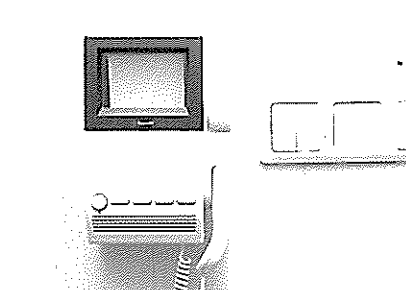
**Designer Cornices**  
Specially designed decorative cornices to all Living/Dining



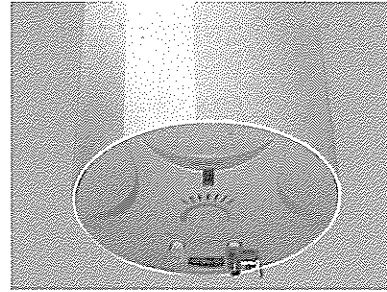
**Designer Hall Closet**  
Specially designed hall closet with shelves



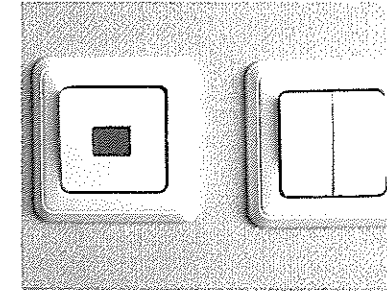
**Air-conditioning System**  
'Carrier' split unit air-conditioning system



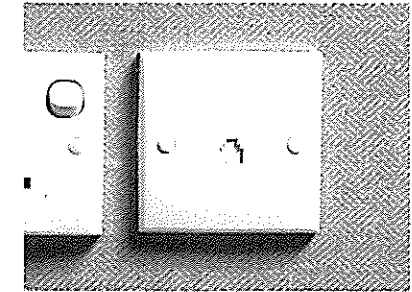
**Audio Video Intercom**  
Black and White audio/video intercom



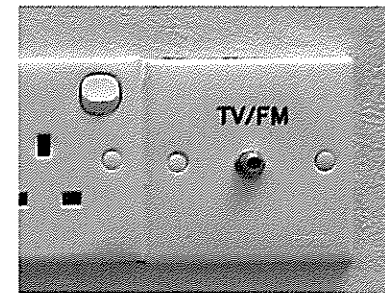
**Water Heater**  
Storage water heaters



**Electrical Accessories**  
Decorative electrical light switches to all areas except Kitchen, Yard and Utility



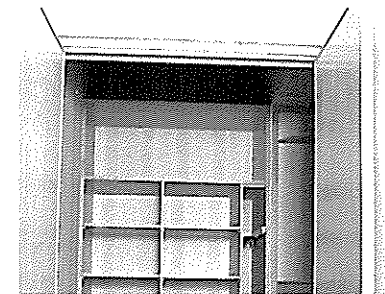
**Telephone Points**  
Telephone points to all Living/Dining and Bedrooms



**Cablevision TV Outlet**  
TV outlet provided with approved cable capable of receiving future cablevision services to be subscribed by purchasers.



**DresserVanity**  
Designer dresser vanity to master bedroom of type A1 and A2 series



**Designer Walk-in Wardrobe**  
Designer walk-in wardrobe to master bedroom of type A1, A2 and A4 series



**Study**  
Specially designed study space for types A4, A5 and A6

ALL APARTMENTS ARE  
provided with:

**FLOORS**

- Choice of imported polished granite slabs or marble slabs or teak strip parquet with timber skirting for study of type A4, A5 & A6, living/dining and hallway.
- Teak strip parquet flooring to study of type A1 & A2 series and all bedrooms.
- Imported homogeneous tiles to kitchen, yard, hall closet and open terraces.
- Imported marble tiles to bath 1 and bath 3.
- Imported ceramic tiles to bath 2, bath 2a, bath 3a, wc and utility.

**BUILT-IN FURNITURE & EQUIPMENT**

- Designer wardrobes to all bedrooms.
- Designer hall closet.
- Designer high & low level kitchen cabinets.
- Imported polished granite kitchen countertop.
- Cooker hob and chimney hood.
- Imported 'cristalite' double bowl single drainer kitchen sink.
- Microwave oven
- Conventional oven

**SANITARY WARES**

- Imported pedestal water closets and longbath.
- Laminated glass framed shower cubicles.

**SANITARY FITTINGS**

- Imported brass/chrome finish mixer taps to bath 1 and bath 3.
- Imported chrome finish mixer taps to bath 2, bath 2a and bath 3a.

**VANITY TOP**

- Marble vanity top with undercounter basin and cabinet to all baths.

**DOOR**

- Approved decorative fire-rated solid timber door to main entrance.

**LOCKSET**

- Imported 'Showa' lockset with magnetic card control to main entrance door and imported lockset to other doors.

**AIR-CONDITIONING**

- Carrier multi-split system to dry kitchen of Type A1 & A2 series, living/dining and all bedrooms.

**INTERCOM**

- Audio/video intercom.

**HAIR-DRYER WITH SHAVER BASE**

- Wall mounted hair-dryer with shaver base to master bathroom.

**ELECTRONIC SAFE**

- Hotel style electronic safe.

**CORNICES**

- Gypsum fibre-plaster cornice to living/dining (excluding hall-way leading to bedrooms)

**LIGHT SWITCHES**

- Specially selected light switches to living/dining and all bedrooms.

**IN ADDITION,**

PROVISION IS MADE FOR:-

**SECURITY**

- CCTV system to lift lobbies at 1st storey, carpark and basement.

**CARPARK**

- Total number of car parking spaces provided is 640 or such other number as may be approved by the relevant authorities.
- For purpose of allotment, each unit is entitled to one non-designated car parking lot only.

*NOTE: Where warranties are given by the manufacturers and/or contractors and/or suppliers of any of the above installation, the Vendor shall assign to the Purchaser such warranties at the time when possession of the building unit is delivered to the Purchaser PROVIDED ALWAYS that the Vendor shall not be liable nor be answerable or responsible to the Purchaser for any failure on the part of the manufacturers and/or contractors and/or suppliers to maintain or repair for any defects occurring thereto.*



*For bookings & enquiries :*

**DOVER RISE LTD**

#06-00, 6th Storey, Far East Plaza (Next to Hyatt Hotel)

Scotts Road, Singapore

**Tel: 2352411**